

ENGLISH.....5

SUMMARY

- 1 INTRODUCTION.....5
- 2 SYSTEM REQUIREMENTS.....6
- 3 BLUETOOTH RESOURCES.....7
- 4 SOFTWARE INSTALLATION.....8
 - 4.1 Preliminary Operations.....9
 - 4.2 First part: Installation of Additional Software Components.....11
 - 4.3 Second part: Installation of the Environment Purchased.....15
- 5 INFORMATION REGARDING INSTALLATION ON WINDOWS™ VISTA AND WINDOWS™ 7 OPERATING SYSTEMS.....21
- 6 SOFTWARE ACTIVATION.....22
 - 6.1 Manual Activation.....25
 - 6.2 Automatic Activation.....25
 - 6.3 Release Notes.....26
- 7 AUTOMATIC CONFIGURATION.....27
- 8 USER MANUAL.....30

TEXA IDC4 SOFTWARE INSTALLATION

1 INTRODUCTION

This manual describes the installation procedure for TEXA IDC4 software. The procedure described is valid for all versions and for all software environments.






If you are installing the software on a Windows™ Vista or Windows™ Seven operating system, consult the chapter, INFORMATION REGARDING INSTALLATION ON WINDOWS™ VISTA AND WINDOWS™ 7 OPERATING SYSTEMS.

If you have any difficulties in carrying out this procedure correctly and completely, contact your local retailer.

2 SYSTEM REQUIREMENTS

Below you will find a list of system requirements for installing the software on a PC.

	Requirement	Idle	Advised
	Service Pack	Service Pack 2	Service Pack 2
	RAM	512 MB	1 GB
	Space on HARD DISK	4 GB	8 GB
	Screen Resolution	1024x600 pixels	1024x600 pixels
	Browser	Internet Explorer	Internet Explorer 8
	DVD player	Yes	Yes
	USB Port	Yes	Yes
	Wi-Fi	No	Yes
	Bluetooth	No	Yes
 	Service Pack	Service Pack 2	32/64 bit
	RAM	1 GB	2 GB
	Space on HARD DISK	4 GB	8 GB
	Screen Resolution	1024x600 pixels	1024x600 pixels
	Browser	Internet Explorer	Internet Explorer 8
	DVD player	Yes	Yes
	USB Port	Yes	Yes
	Wi-Fi	No	Yes
Bluetooth	No	Yes	

To optimise use and reduce the risk of eventual compatibility problems, we advise that this software be installed on a PC dedicated exclusively to use in the workshop.

3 BLUETOOTH RESOURCES

The software provides special automatic configuration functions for TEXA products equipped with Bluetooth technology.

To use these functions you must install the software on a PC equipped with Bluetooth peripherals.

The software supports the following drivers:

- **MICROSOFT™**
- **WIDCOMM™ 1.4.2 Build 10 or higher**
- **TOSHIBA™ 4 or higher**



If the drivers being used are not supported by the software, you will not be able to use the automatic configuration procedures.

Alternatively, use the Bluetooth manual configuration functions provided by your operating system.



We DO NOT recommend installing external Bluetooth peripherals (such as a USB key) on PCs equipped with built-in Bluetooth.

We recommend you check the Bluetooth system configuration and, if necessary, consult qualified personnel for further information.

4 SOFTWARE INSTALLATION

The software installation is composed of two parts:

FIRST PART: INSTALLATION OF ADDITIONAL SOFTWARE COMPONENTS

In order for the software to work properly certain additional components must be installed on the PC.

The software carries out a quick scan of the PC to check which additional components must be installed.

The list of additional components that need to be installed varies depending on the operating system, the service pack, other previously installed environments/versions (if any), etc.

The time required and steps involved in the installation depend on the number and type of additional components.



Installing certain additional components may require you to reboot the system.

Installation starts again automatically each time the system is restarted.

If your PC's operating system is very recent, you may not have to install any additional components at all.

SECOND PART: INSTALLATION OF THE ENVIRONMENT PURCHASED

The installation of the environment purchased begins when all the additional components are installed.

At this point you may be required to install **ADOBE™ ACROBAT READER**.

NOTES

A message will appear on your screen should any problems arise during installation.

Contact Technical Assistance if the installation cannot be completed successfully.

4.1 Preliminary Operations



Close all active applications.



Disconnect any USB/parallel hardware keys if installing the software on a PC.



Deactivate any antivirus programs within the system.



Disconnect any diagnosis devices connected via USB to the platform on which you intend to install the software.



Do not switch off your PC for any reason during the update unless it is required by the software itself.



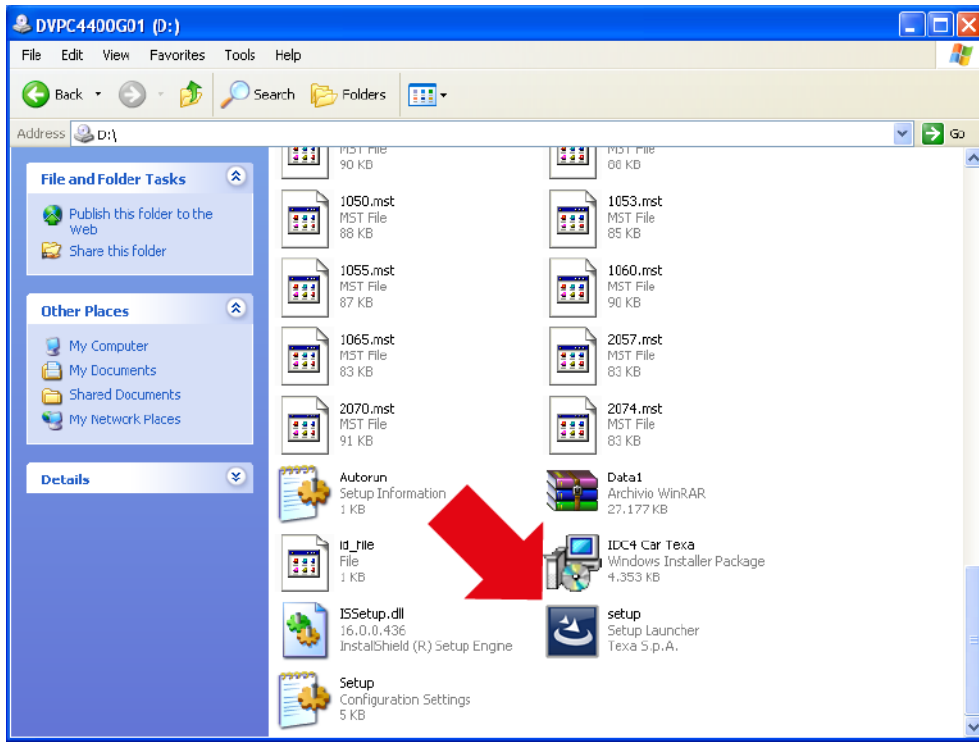
You must have system administrator rights in order to carry out the installation of the software correctly.



In order to use the software correctly we recommend disabling the standby mode in your PC. To do so go to the Control Panel and select Power Options.

Insert the installation DVD in the player.

If the setup procedure doesn't start automatically, access the procedure on the DVD through the system functions and launch the file setup.exe. manually.



4.2 First part: Installation of Additional Software Components

In this phase the additional software components are installed.

Proceed as follows:

Select the installation language.



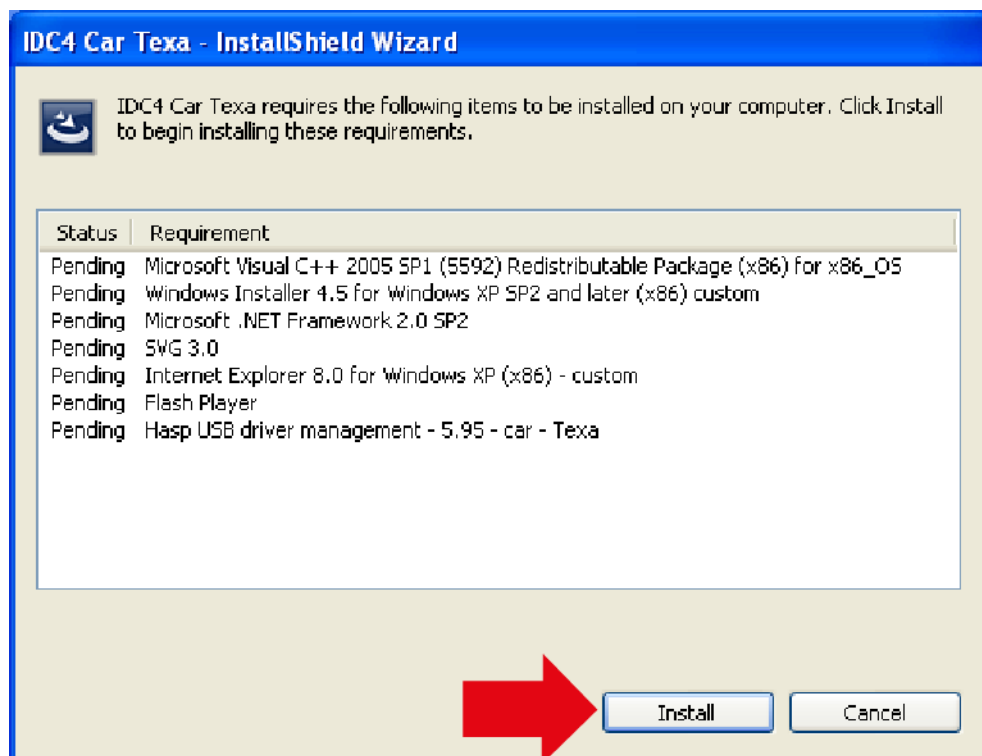
The language that you install is the language in which the software will later be displayed.

Click on **OK**.



The software carries out a quick scan of the PC to check which additional components must be installed.

Click on **INSTALL**.

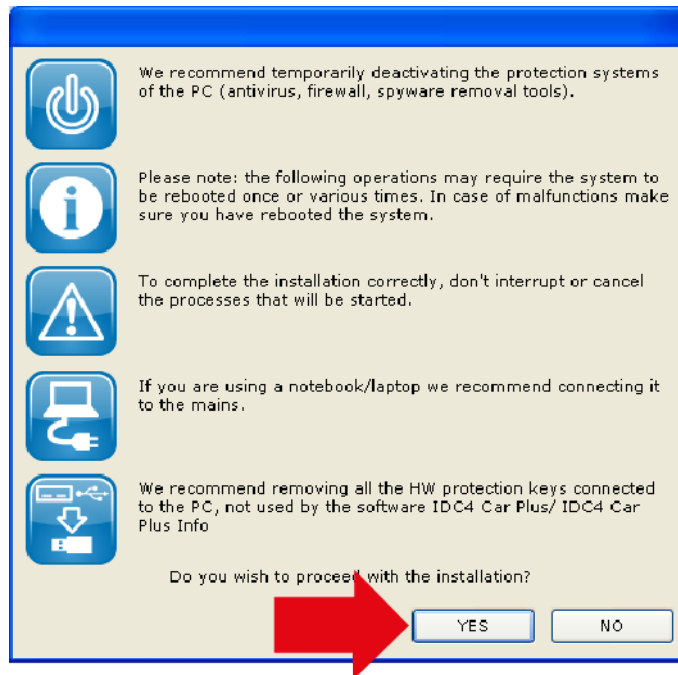




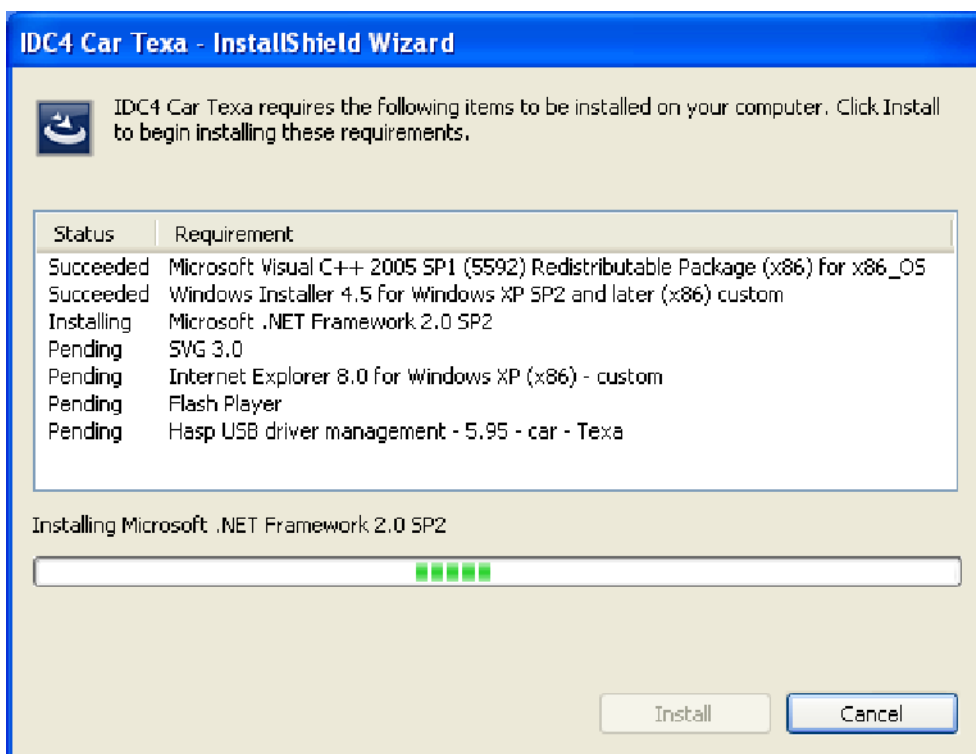
A screen appears containing important information concerning the installation.


Follow the instructions on this screen in order to carry out the installation correctly.

Click **YES**.



The installation of additional components begins.



 **Installing certain additional components may require you to reboot the system.**

Restart the system as indicated.

Installation starts again automatically each time the system is restarted.

Disconnect any diagnosis devices connected via USB to the platform on which you intend to install the software.

Click on **OK**.



Another additional component that may have to be installed is **INTERNET EXPLORER 8**.

Click on **OK**.



NOTE

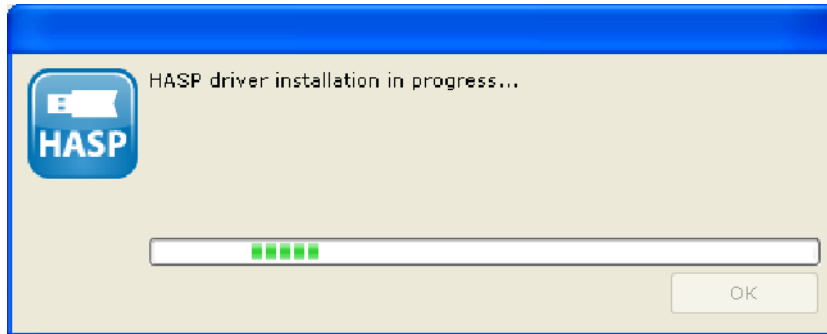
*If the operating system you are installing the component in is set to **Italian** , the browser will be installed in Italian.*

*If the operating system is set to a **language other than Italian** , the browser will be installed in English.*

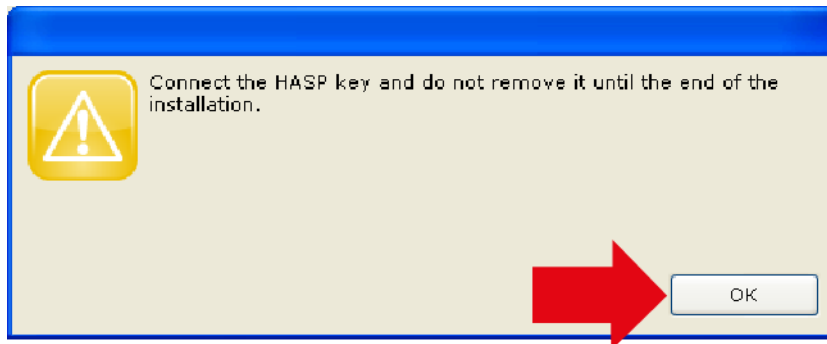
To install the browser in another language, click on the link provided on this screen, download the browser and install the language desired.

Restart the software installation manually.

Among the additional components, the **HASP key drivers** are also installed.



Insert the HASP key into a USB port when requested.
Wait for the red LED on the HASP key to turn on.
Click on **OK**.

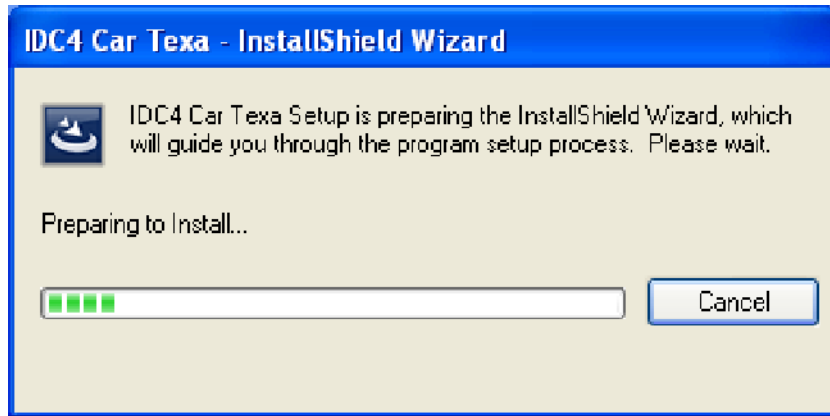


4.3 Second part: Installation of the Environment Purchased

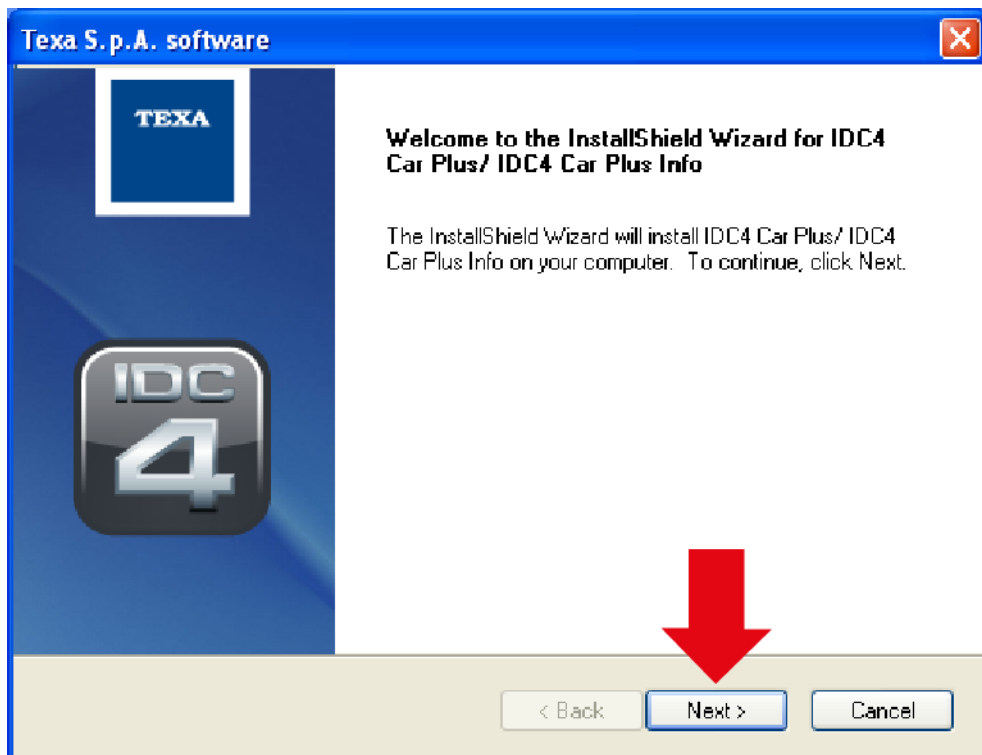
The environment purchased is installed in this phase.

Proceed as follows:

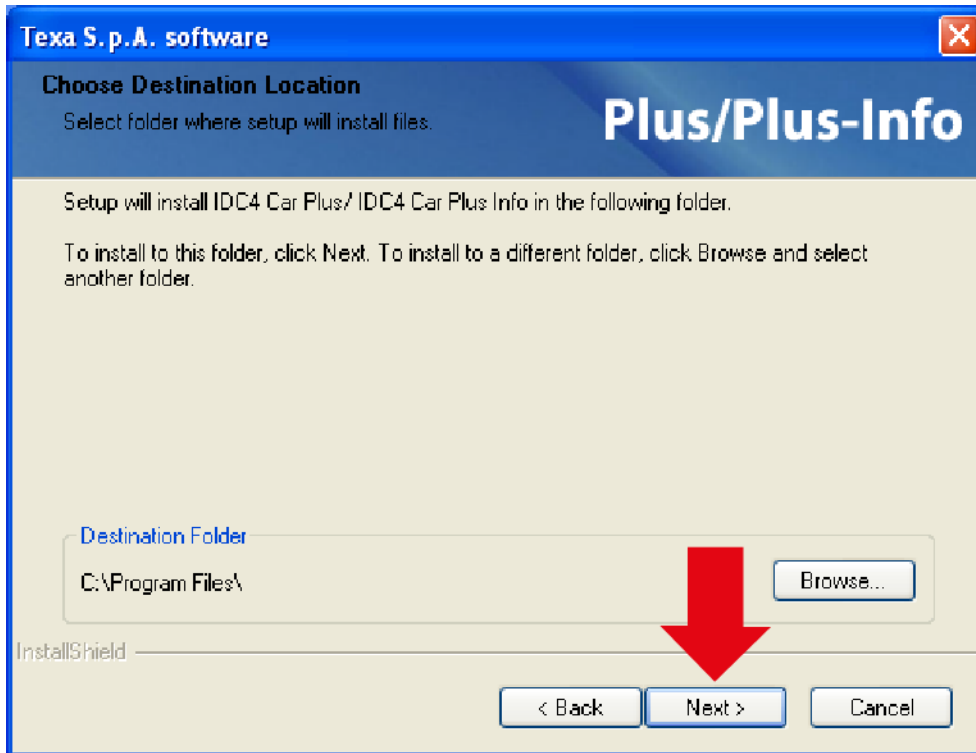
Wait until **InstallShield** is ready.




Click on **NEXT**.

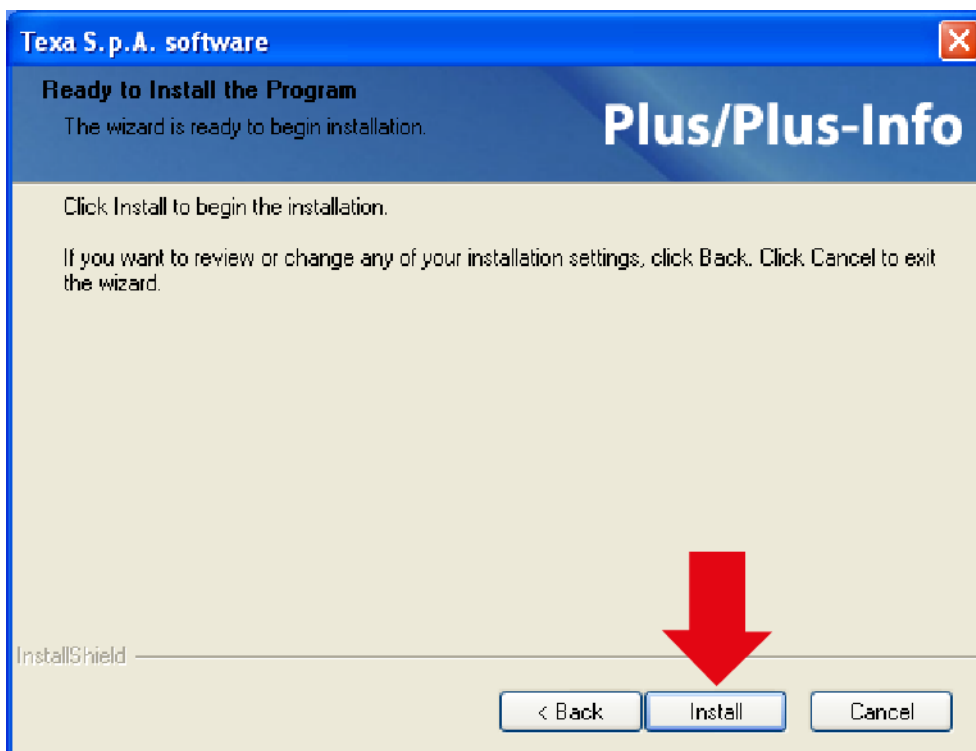


Click on **NEXT**.

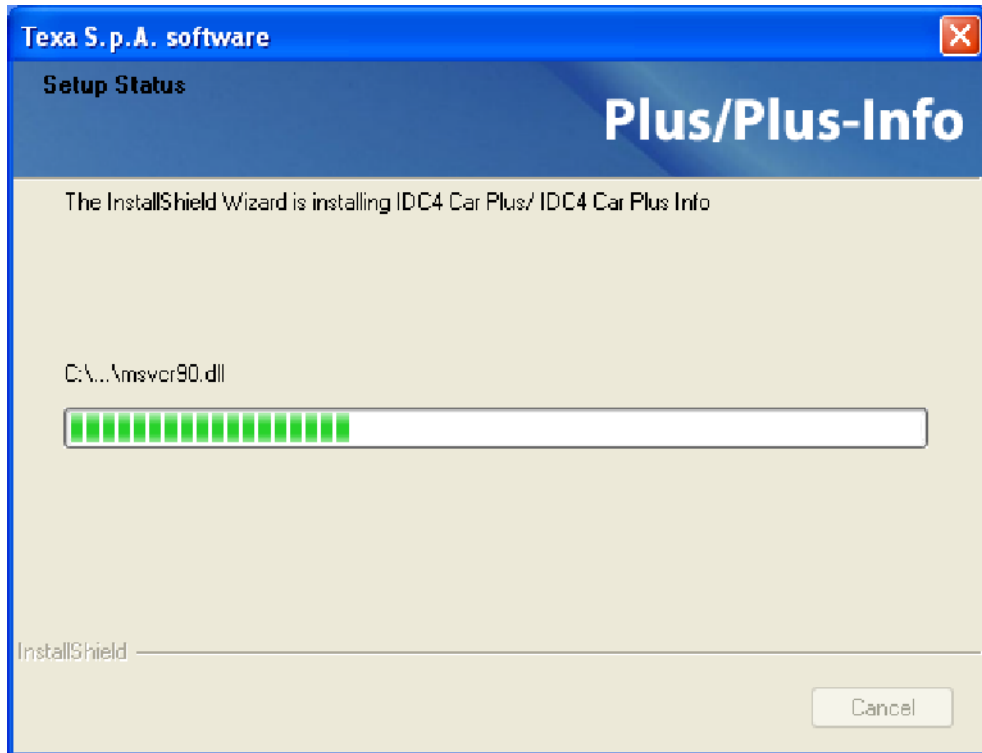


 **The installation of the software using a procedure different from that which is suggested by default is recommended ONLY to expert users**

Click on **INSTALL**.



The installation of the environment purchased begins.

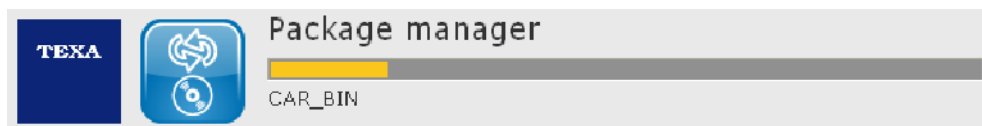


Some of the installation phases may last several minutes.



Wait for the various phases of the installation to complete even if the progression bar does not move.


The data bank will now begin to unzip.



At the end of the unzipping procedure you may be asked to install **ADOBE™ ACROBAT READER**.


If so, follow the whole guided installation procedure for **ADOBE™ ACROBAT READER**.

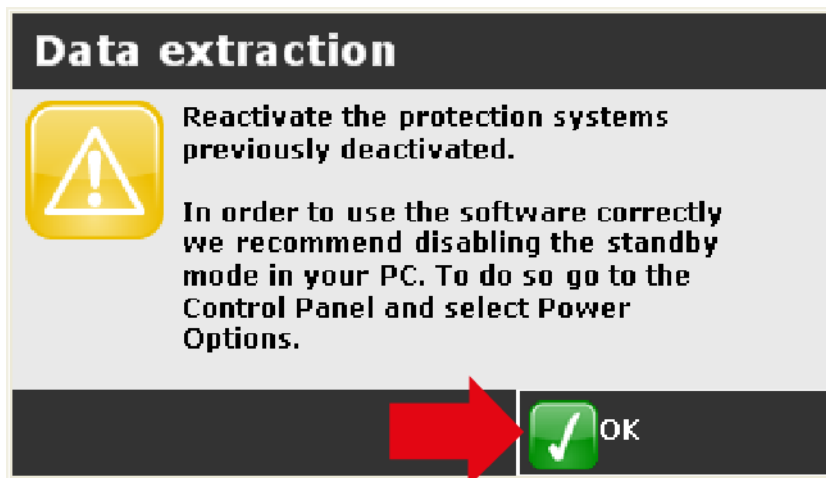
The software installation may require several DVDs.
Insert the second DVD when requested.

Click on the icon .




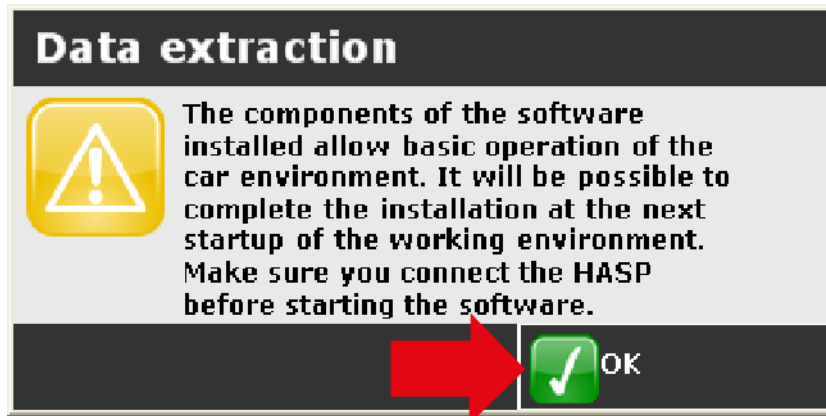
You can now reactivate any antivirus programmes.
Read the instructions on the screen carefully.

Click on the icon .

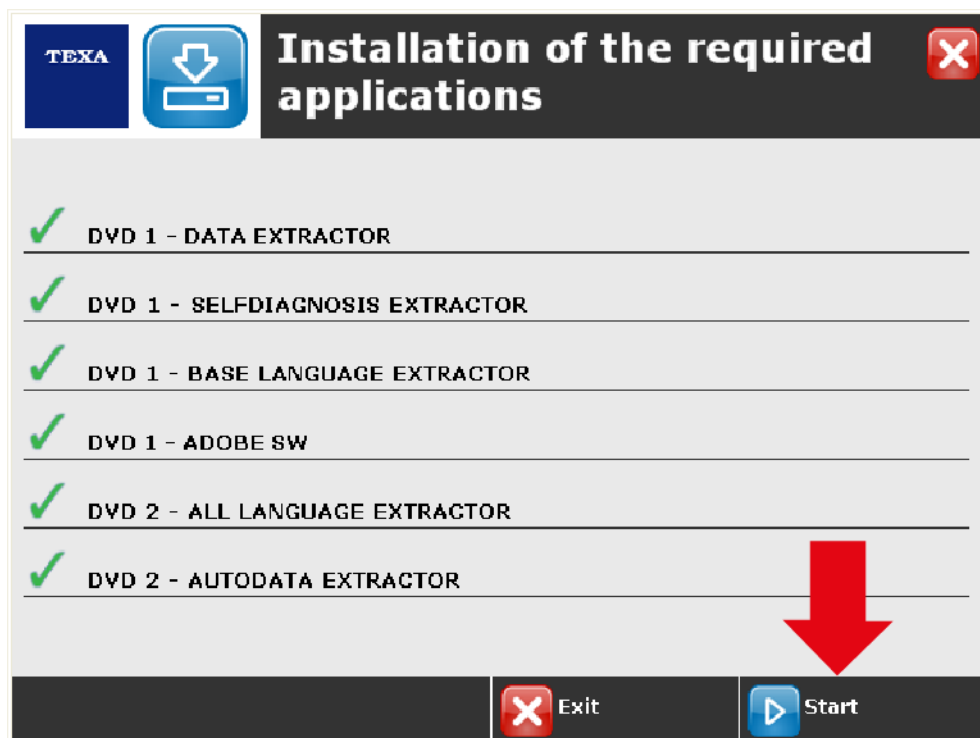


Read the instructions on the screen carefully.

Click on the icon .





Click on .



The installation is complete.

Two icons appear on the desktop:

Icon	Name	Description	Reference Chapter
 IDC4	IDC4	This allows you to start the software.	--
 Texa S.p.A Exchange Manager	Exchange Manager	Allows you to access the service functions reserved to certain environments.	--

5 INFORMATION REGARDING INSTALLATION ON WINDOWS™ VISTA AND WINDOWS™ 7 OPERATING SYSTEMS

The installation of the software on **Windows™ Vista** and **Windows™ 7** differs from others as a result of the functions implemented by the operating systems, in particular the **UAC** security settings.

The **UAC** (User Account Control) is a protection module introduced by **Microsoft™** that manages the licenses of individual PC users in order to prevent dangerous software from being run on the computer and to safeguard the system data or components from damage.

The **UAC** intervenes both during the installation and when the software is opened, momentarily blocking its operation.

You can deactivate the **UAC** by modifying the module's settings in the **Control Panel**.



We recommend that the security settings be modified by qualified personnel only.

For further information regarding the User Account Control see the following **Microsoft™** websites:

Windows™ Vista: <http://support.microsoft.com/kb/975787> (**Windows Vista**)

Windows™ 7: <http://technet.microsoft.com/en-us/library/cc709691%28WS.10%29.aspx>

6 SOFTWARE ACTIVATION

Before you can use the software you need to accept the conditions described in the **LICENCE AGREEMENT** and activate the software with the **COUNTERCODE**.

Activation can be carried out in two ways:

- **MANUAL ACTIVATION:** *the countercode is entered manually.*
- **AUTOMATIC ACTIVATION:** *the countercode is entered via Internet.*

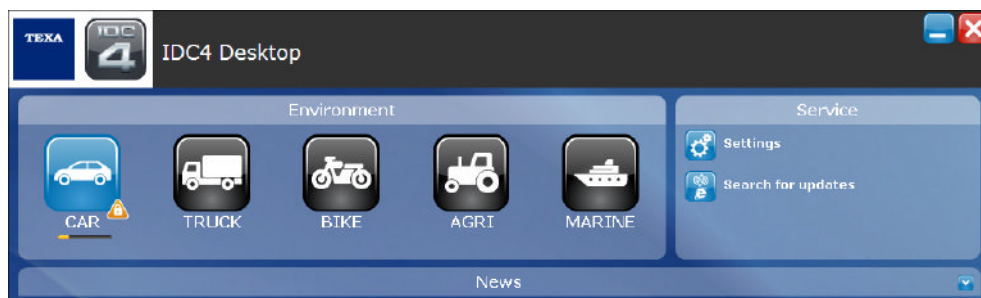
The following procedure describes the operations required to activate the software.

Proceed as follows:

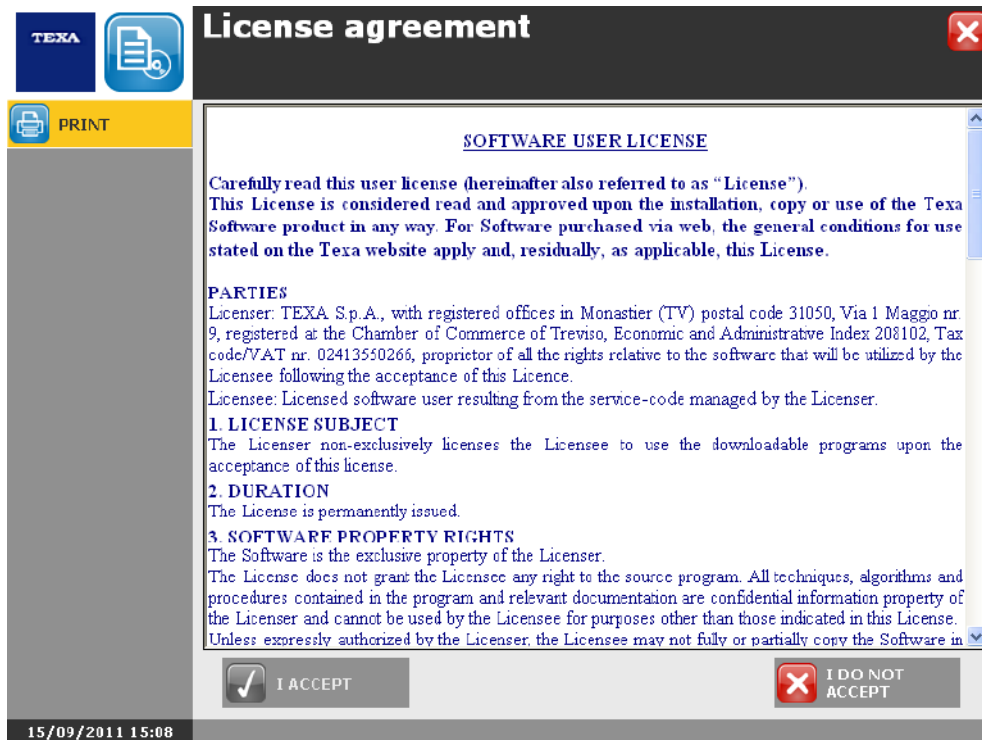



Click on the icon IDC4 .


Click on the icon of the environment installed.



Read the software **LICENCE AGREEMENT** carefully using the scroll bar to view all the text.








The  icon becomes active only once you have reached the end of the text in the **LICENSE AGREEMENT**.

Click on the icon .

The **SOFTWARE ACTIVATION** screen appears.
 This screen allows you to activate the environment installed.



Icon	Name	Description	Reference Chapter
	Copy	Allows you to copy the ACTIVATION CODE .	--
	Paste	Allows you to paste the ACTIVATION COUNTERCODE .	--
	Manual Activation	Allows you to carry out the activation manually.	--
	Automatic Activation* **	Allows you to carry out the activation automatically.	--
	Cancel	Allows you to close the screen.	--

(*) You must have an active Internet connection.




() Not available when installing the software for the first time.**

6.1 Manual Activation

This function allows you to carry out the activation manually.

 **You can attempt the activation a maximum of 20 times.**


Proceed as follows:

1. Click on  to copy the activation code.
2. Send the activation code to your retailer. The activation code can be pasted in an email using the system functions.
3. Select and copy the countercode provided by your retailer using the system functions.
4. Click on  to paste the countercode.
5. The countercode is pasted in the designated field.
6. Click on the icon .
7. The environment is activated.

6.2 Automatic Activation


This function allows you to carry out the activation automatically.

The software downloads the countercode via Internet and fills in the corresponding field automatically.

 **This function is available only when carrying out an update, not when carrying out a first installation.**

 **You must have an active Internet connection.**

Proceed as follows:

1. Click on the icon .
2. Wait for the viewing unit to connect to the server.
3. The countercode is downloaded.
4. The environment is activated.

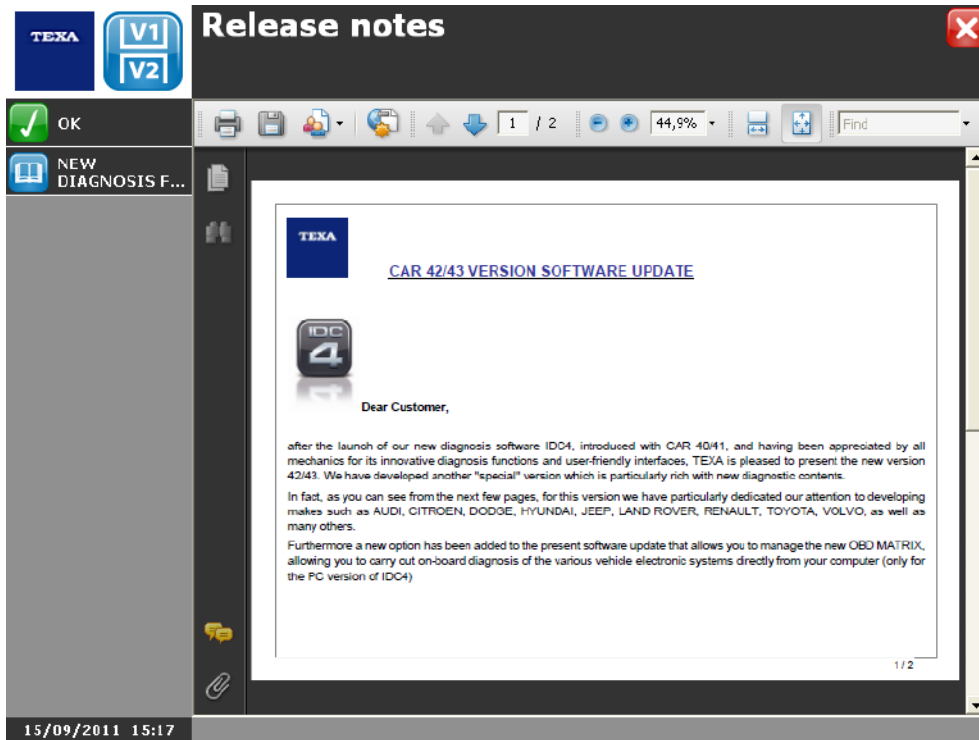
6.3 Release Notes



The **RELEASE NOTES** is a document that describes the new features of the version installed.

The **RELEASE NOTES** are displayed automatically.

NOTE

Before you can view the **RELEASE NOTES** you may have to accept the **ADOBE™ ACROBAT READER** license agreement.



Icon	Name	Description	Reference Chapter
	Ok	Allows you to close the screen.	--
	Update	Allows you to view the Adobe™ Acrobat Reader licence in case that it has not yet been accepted.	--

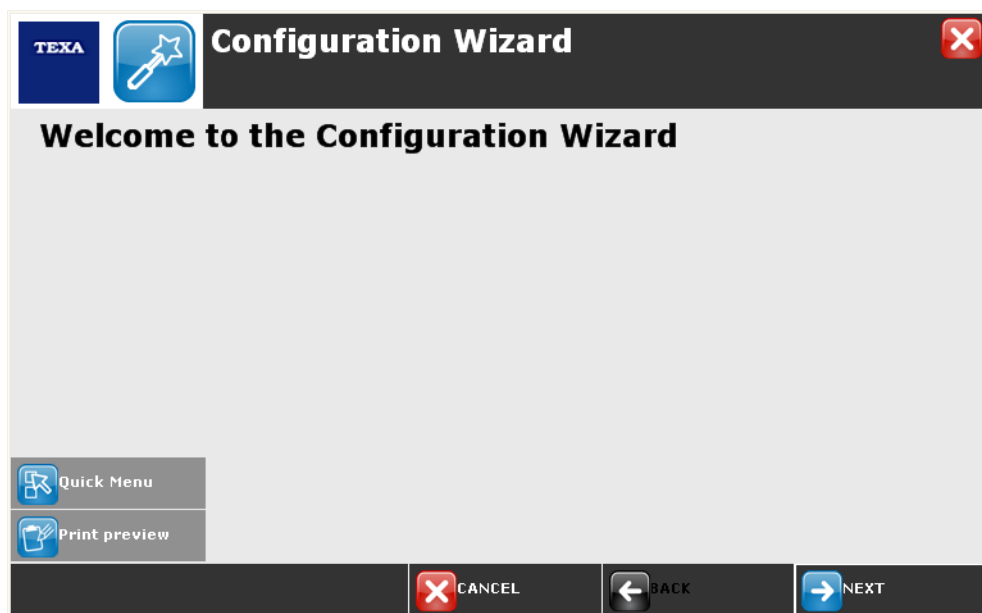
7 AUTOMATIC CONFIGURATION

This function allows you to access the automatic configuration of the devices/tools for the environment installed.

The function automatically starts when the **RELEASE NOTES** are closed.

The function only starts if you are carrying out a first installation.

The function will **not** start if you are updating the software, that is, if you are switching from one version to another; this allows information on tools which have already been configured to be kept.




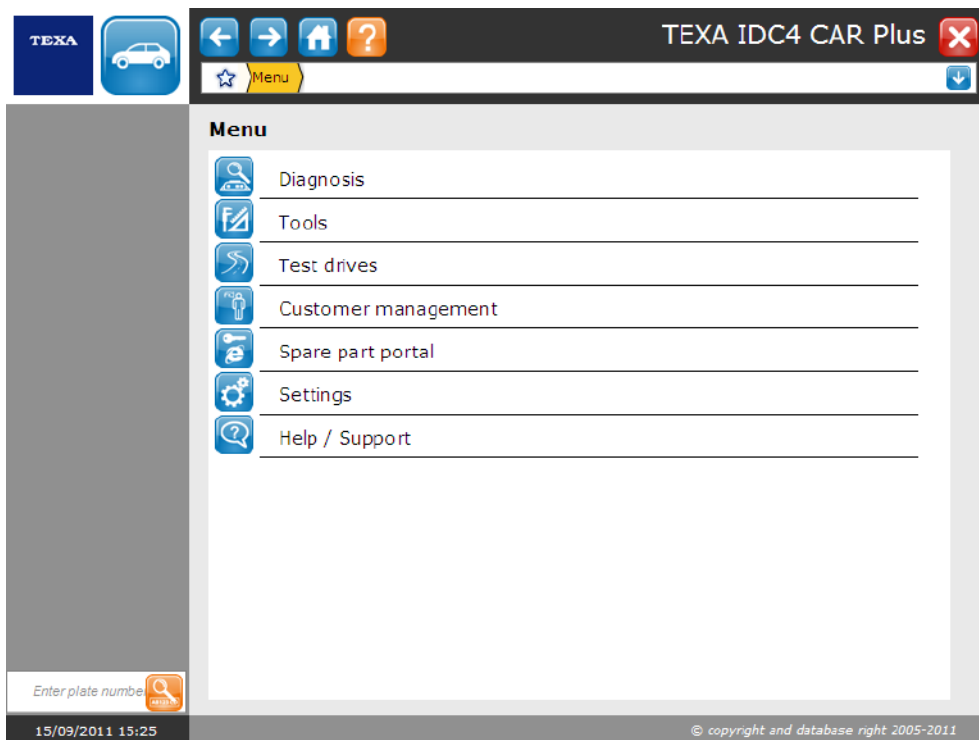
Proceed with the automatic configuration of the devices/tools for the environment installed.

It is possible to halt the configuration and continue at a later point.


Proceed as follows:

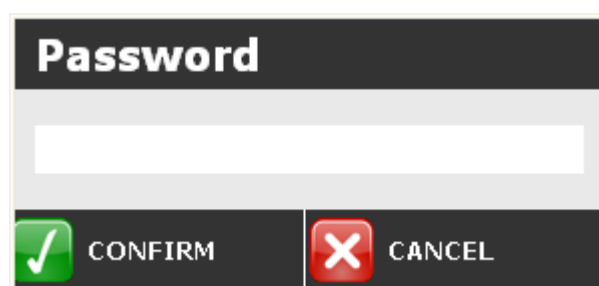
Select the environment installed.


Click on the icon .

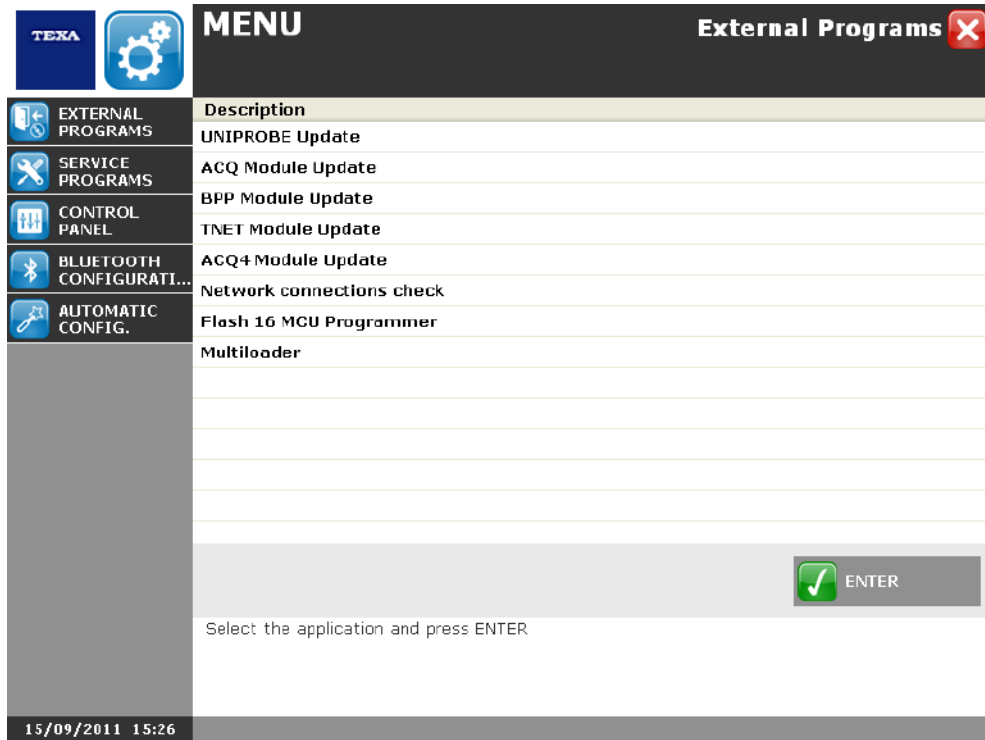


Enter the password **1236**.

Click on the icon .



Click on the icon .



For further information regarding configuration see the user manual available in the software.

8 USER MANUAL


This function allows you to view the software manual.

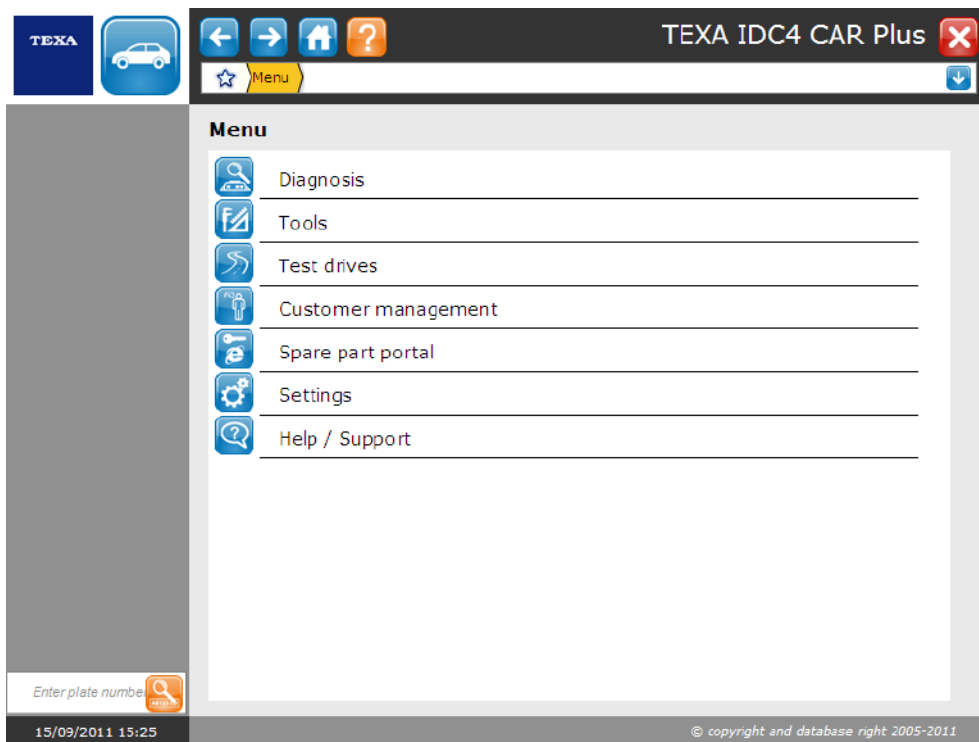
Connecting to the Internet allows the function to check if an updated version of the manual is available.




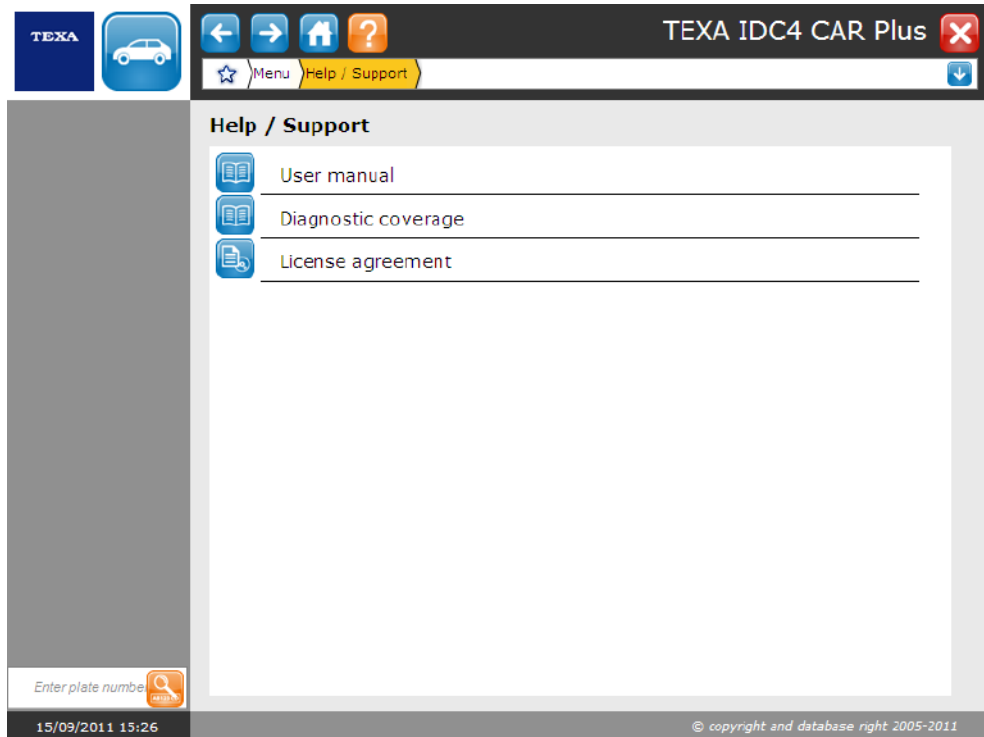
You need an active Internet connection


Proceed as follows:

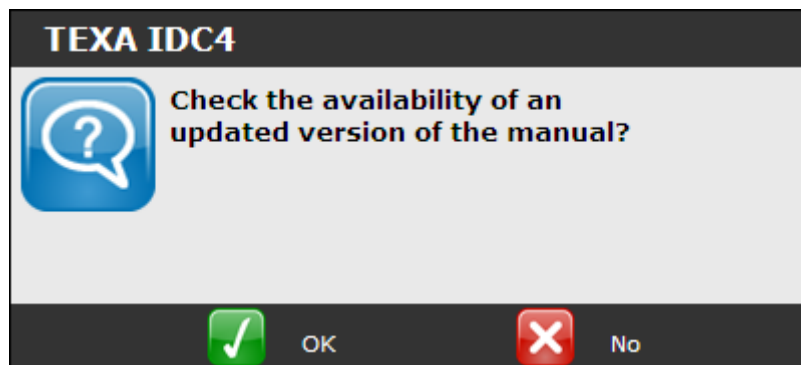
Click on the icon .



Click on the icon .



Click on the icon .



If an updated version of the manual is available, it is downloaded and displayed.

If no updated versions of the manual are available, the manual that is integrated in the software is displayed.