

Mini kiosk K810

Price Check

Installation Guide



P/N: 48200250
June 2004 V1.0

Index

Safety	3
1. Accessory	4
2. I/O Function	5
2.1 Front View.....	5
2.2 Side View	5
2.3 Rear View	6
3. Specification.....	7
4. Driver Installation	9
4.1 Chipset Driver Installation.....	9
4.2 LAN Driver Installation.....	11
4.3 Audio Driver Installation.....	12
4.4 Elo_Touch	13
5.Jumper Setting.....	15
5.1 B46 Mainboard	15
5.2 Bridge board	17
6.Wall Mount Bracket.....	18

Safety

IMPORTANT SAFETY INSTRUCTIONS

1. Read these instructions carefully. Keep these instructions for future reference.
2. Follow all warnings and instructions marked on the product.
3. Do not use this product near water.
4. Do not place this product on an unstable cart, stand, or table. The product may fall, causing serious damage to the product.
5. Slots and openings in the cabinet and the back or bottom are provided for ventilation; to ensure reliable operation of the product and to protect it from overheating, these openings must not be blocked or covered. The openings should never be blocked by placing the product on a bed, sofa, rug, or other similar surface. This product should never be placed near or over a radiator or heat register, or in a built-in installation unless proper ventilation is provided.
6. This product should be operated from the type of power indicated on the marking label. If you are not sure of the type of power available, consult your dealer or local power company.
7. Do not allow anything to rest on the power cord. Do not locate this product where persons will walk on the cord.
8. Never push objects of any kind into this product through cabinet slots as they may touch dangerous voltage points or short out parts that could result in a fire or electric shock. Never spill liquid of any kind on the product.

FCC

This device complies with part 15 of the FCC rules. Operation is subject to the following two conditions:

- (1) This device may not cause harmful interference.
- (2) This device must accept any interference received, including interference that may cause undesired operation.

CD-ROM Safety Warning

DANGER

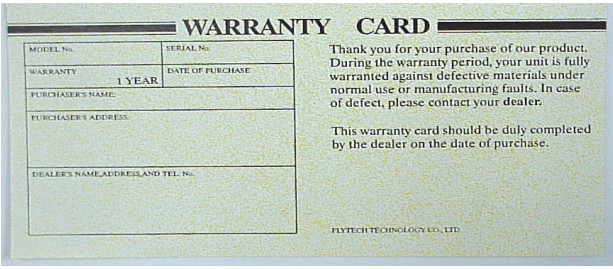
INVISIBLE LASER RADIATION WHEN OPEN.

AVOID EXPOSURE TO BEAM

Caution on Lithium Batteries

Danger will explosion if battery is incorrectly replaced. Replace only with the same or equivalent type recommended by the manufacturer. Dispose of used batteries according to the manufacturer's instructions.

1. Accessory

	
a. Warranty Card	b. Driver bank
c. Installation Guide	

The following files in the folders of Driver Bank are necessary for driver installation or manual reference.

B46 Mainboard

Folder/File	File Description
<CD>:\B46\B46.htm	B46 Driver list
<CD>:\B46\Audio\V4.50b	Audio driver
<CD>:\Common\LAN_drive\ R8139_810x	LAN driver
<CD>:\B46\VIA4IN1	Chipset driver
<CD>:\B46\VGA	VGA driver
<CD>:\Common\Elo_Touch	Touch driver
<CD>:\datasheet\Kiosk	K810-PC installation guide
<CD>:\ Datasheet\Kiosk Peripherals\ Scanner\K810_PC	Scanner user's manual

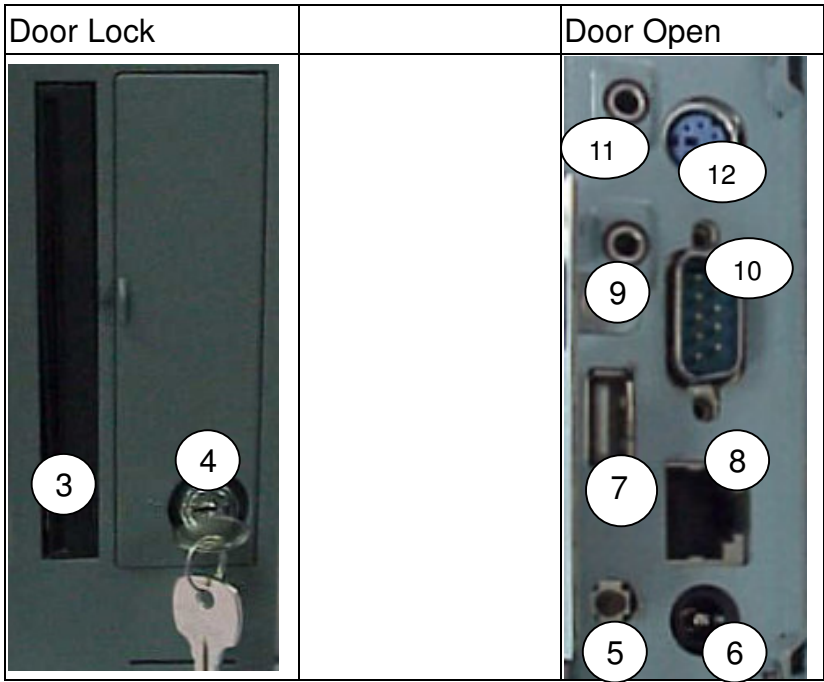
2. I/O Function

2.1 Front View



#	Function
1	Magnetic Card Reader
2	Laser Scanner

2.2 Side View



#	Function	#	Function
3	CD-ROM/CD Combo	8	LAN
4	Door Lock	9	Line out
5	Power Button	10	COM1
6	DC 19V IN	11	MIC input
7	USB (1.1)	12	PS/2 (Keyboard/Mouse)

2.3 Rear View



#	Function
1	AC Inlet
2	LAN

Note: If you want to use LAN port on rear view, you have to connect a extend line from LAN port on side view. Or you can use LAN port on side view directly.

3. Specification

Mainboard Specification

Mainboard	B46 with exclusive bridge I/O board
CPU	Support VIA Eden 733MHz
Chipsets	VIA 8606 Twister-T (VT8606+VT686B)
Memory	On-board 128MB SDRAM One SO-DIMM support additional memory up to 256MB (w/o ECC)
HDD (Primary)	<ul style="list-style-type: none"> ● Support internal Slim type 2.5" HDD from 44pin header; ● Support internal 3.5" HDD ● Optional drive with 2.5" HDD or 3.5" HDD are either one choice
Compact Flash (Secondary Master)	Socket supported (Type 1 and type 2)
Serial Port (Pin 1/ 9 with +5V/+12V)	Internal port x 3 (bridge board); External port x1 (D-sub from B46 Mainboard)
Parallel	N/A
USB (USB 1.1 Compliant)	Internal port x2 (bridge board) External port x1 (internal and external port are either one choice)
PS/2	Internal port x1 (CN14 on the bridge board) or External port x1 (for keyboard/mouse via Y cable) (either one choice)
LAN	10 base-T /100 base-TX RJ45 port x1 (external)
Audio	External Line-out Jack x1, volume control via s/w, optional earphone-line volume control, without h/w control
Microphone	External Mic-in Jack x1, internal Mic-in port x1 (either one choice)
External I/O Ports	1 x External Mic-in Jack 1 x line-out 1 x USB (1.1) 1 x Power button 1 x PS/2 for Keyboard/Mouse via Y-cable 1 x COM port from B46 M/B (RS232) 1 x RJ45 for LAN 1 x Power jack for power code 1 x COM RS232 cable for external devices 1 x External LAN cable
OS support	Microsoft® Windows® 2000/XP/XP Embedded, WinCE.Net 4.2 & Linux RedHat 7.2 or above

LCD Panel / Touch Panel

LCD size	18bit 10.4" TFT LVDS
Touch Screen	ELO 5-wire Resistive type
Brightness	10.4": 150 ~ 230 cd/m ² (not adjustable)
Resolution	800 x 600

System / Housing

Speaker	1W speaker (with chamber) x2
Microphone	Internal electret condenser microphone unit: 9.83+/-0.1mmØ, 7.0+/-0.3mm depth
Screen Tilt Angle	80 ° ~ 90 °
Door lock	Door Lock x1
Power Supply	ACBEL AC adaptor API3AD01: Input 100~240V, output 19V/6.3A/120W; Safety: UL, c/UL, TUV, T-Mark
EMC & Safety	FCC/CE Class A
Dimension (W x D x H)	263 x 134 x 376 mm
Temperature	0°C ~ 35°C, operating

Optional Device

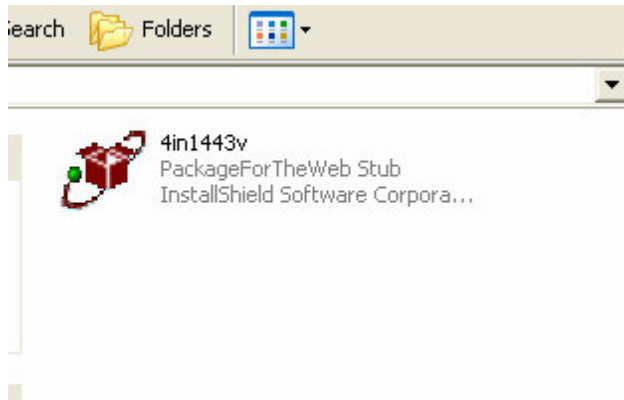
Internal Optional Storage	Slot-in & Slim CD-ROM/DVD-ROM/COMBO drive
Internal Wireless LAN Kit	Mini PCI Wireless LAN Card with internal Antenna x2
Earphone	Headphone style

4. Driver Installation

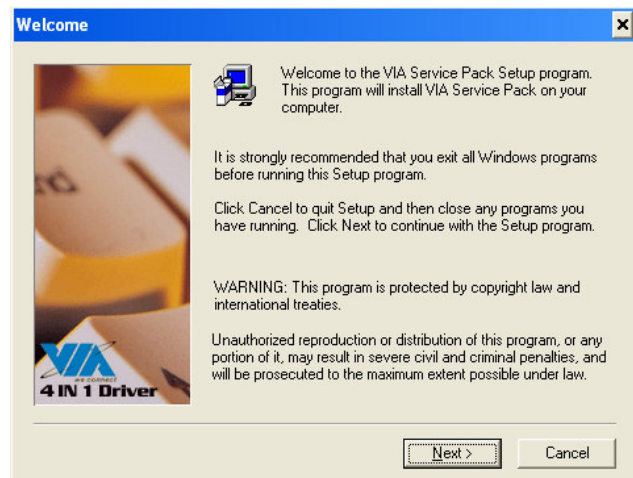
The follow procedures are for Windows XP, other platforms are similar.

4.1 Chipset Driver Installation

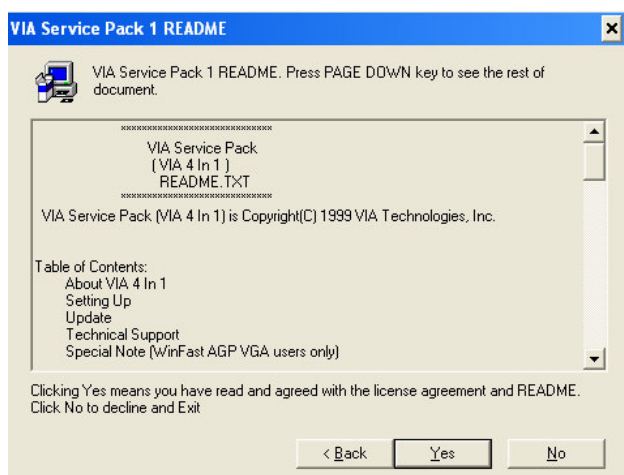
(Path: <CD>:\B46\VIA_4IN1)



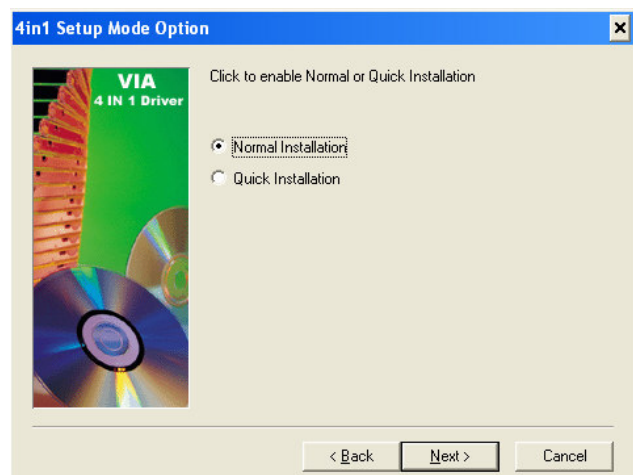
a. Click "4in1443v" on the My Computer window.



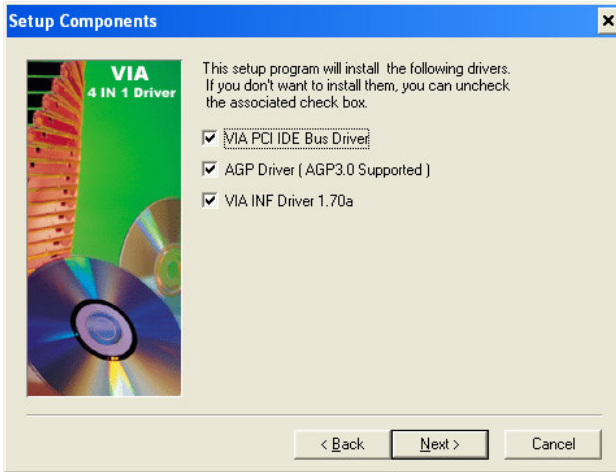
b. Click "Next" button on the welcome window.



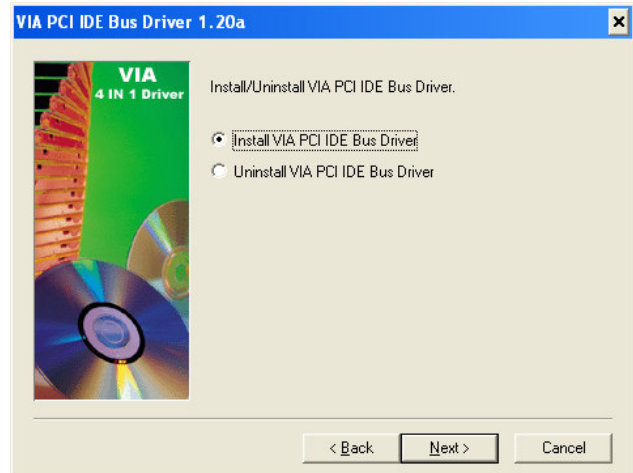
c. Click "Yes" button on the Readme window.



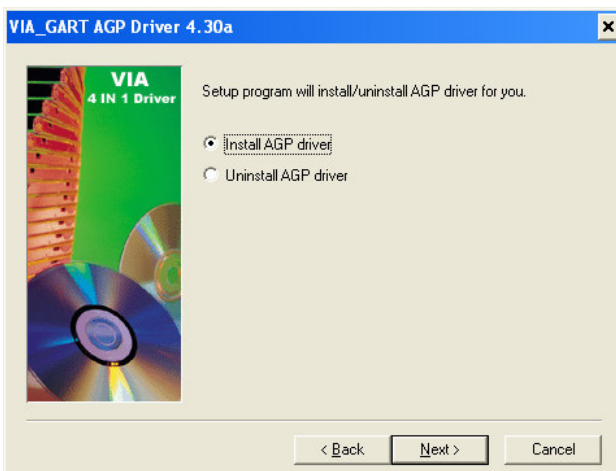
d. Click "Next" button on the 4in1 Setup Mode Option window.



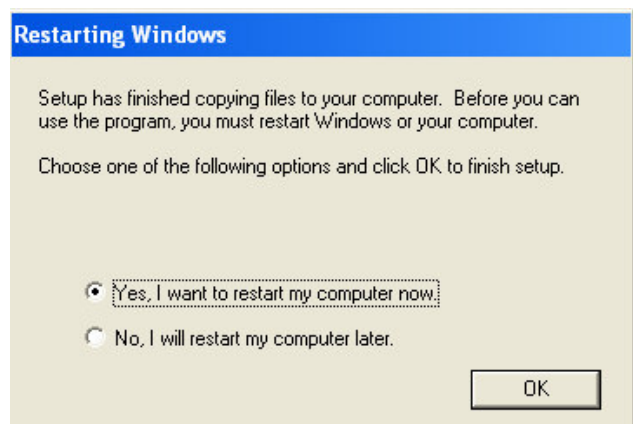
e. Click "Next" button on the Setup Component window.



f. Click "Next" button on the VIA PCI IDE Bus Driver window.



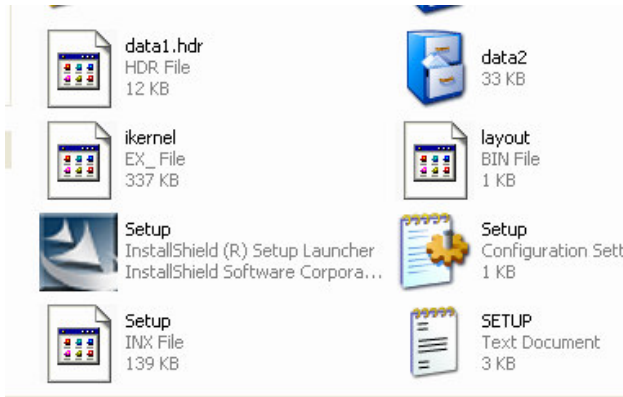
g. Click "Next" button on the VIA_GART AGP Driver window.



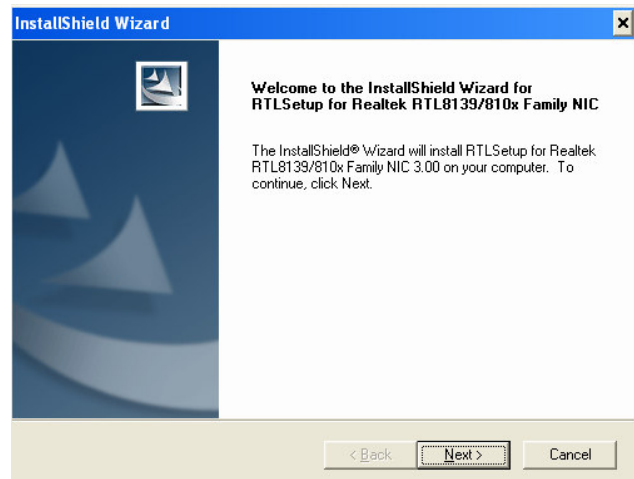
h. Click "OK" button to restart the system.

4.2 LAN Driver Installation

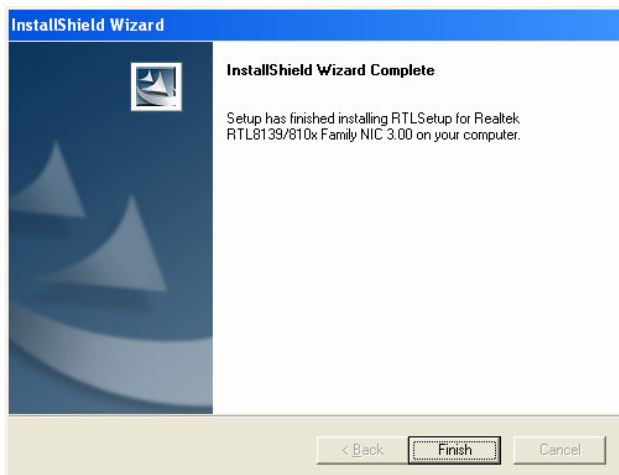
(Path:<CD> :\\Common\\Lan_driver\\ R8139_810x\\9x_ME_2K_XP)



a. Click "Setup" on the My computer windows.



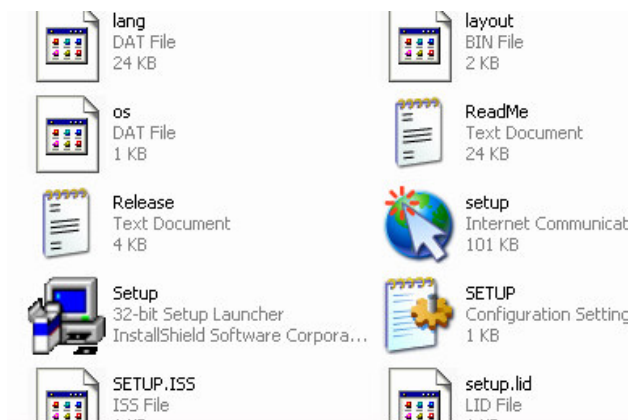
b. Click "Next" button on the InstallShield Wizard window.



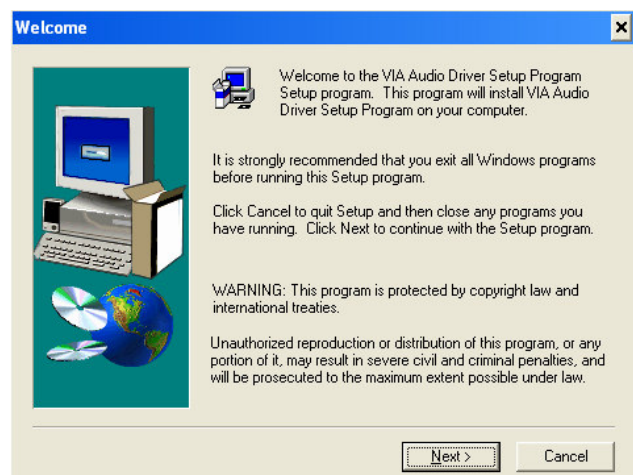
c. Click "Next" button on the InstallShield Wizard complete window.

4.3 Audio Driver Installation

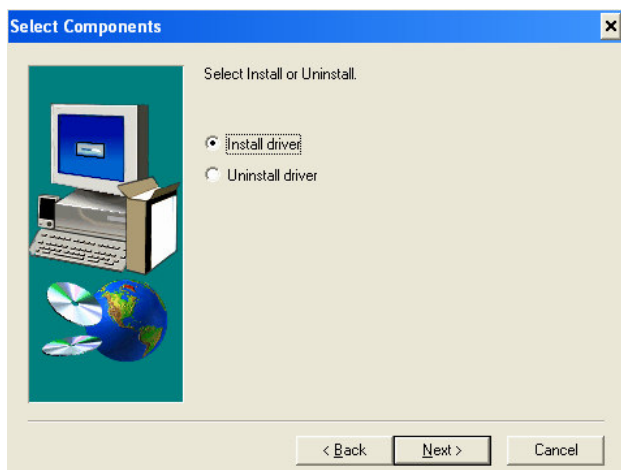
(Path: <CD>:\B46\Audio\V4.50b)



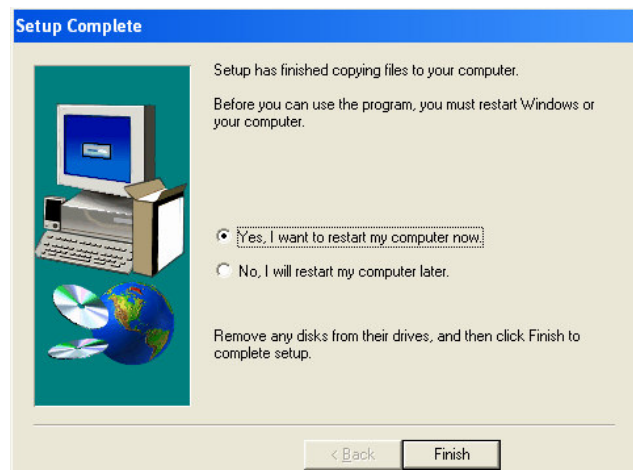
a. Click "Setup" on the My computer windows.



b. Click "Next" button on the welcome window.



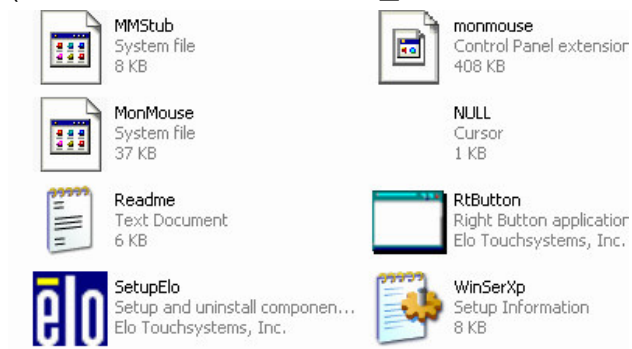
c. Click "Next" button on the Select Component window.



d. Click "Finish" button to restart the system.

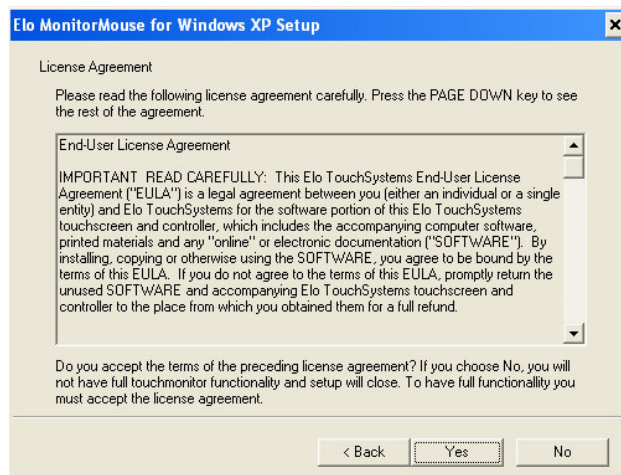
4.4 Elo_Touch

(Path:<CD>:\Common\Elo_Touch\EloWinXP)

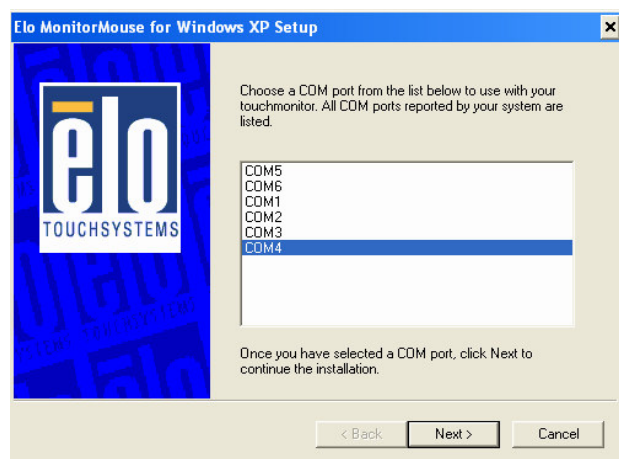


a. Click "Setup" on the My computer windows.

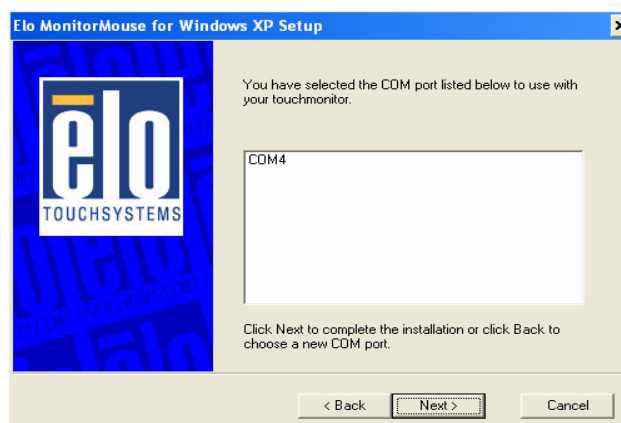
b. Click "Next" button on the welcome window.



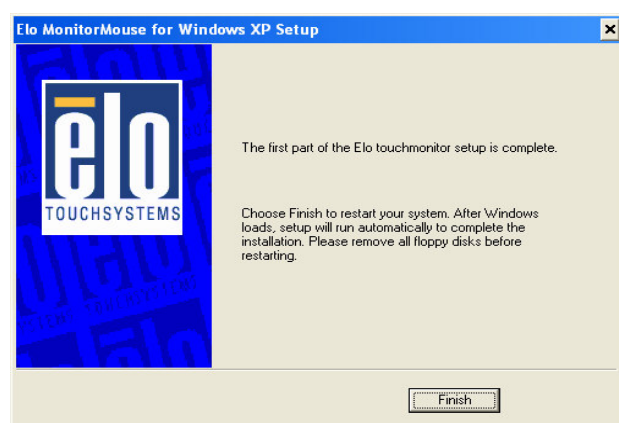
c. Click "Yes" on the License Agreement window.



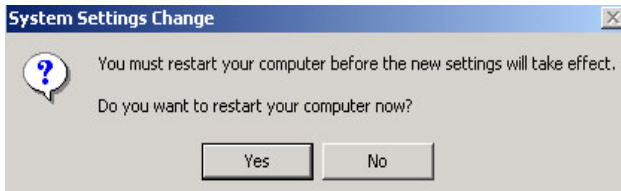
d. Choose "COM4" and click "Next" button on the Elo MonitorMouse for Windows XP Setup window.



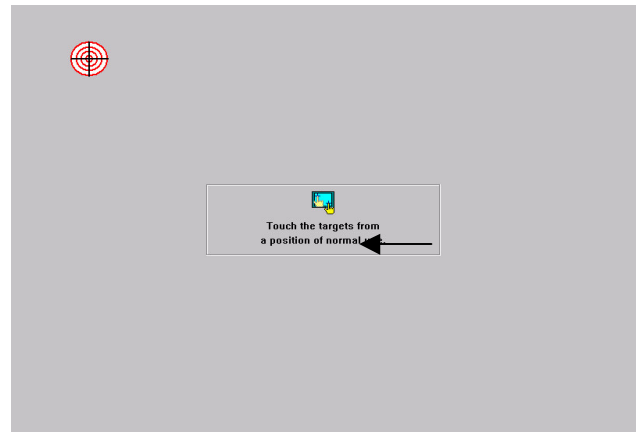
f. Click "Next" on the Elo MonitorMouse for Windows XP Setup window.



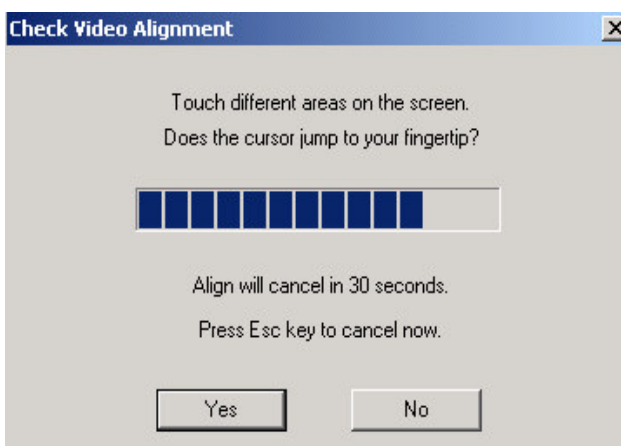
g. Click "Finish" on the Elo MonitorMouse for Windows XP Setup window.



h. Click "Yes" on the System Settings Change window.



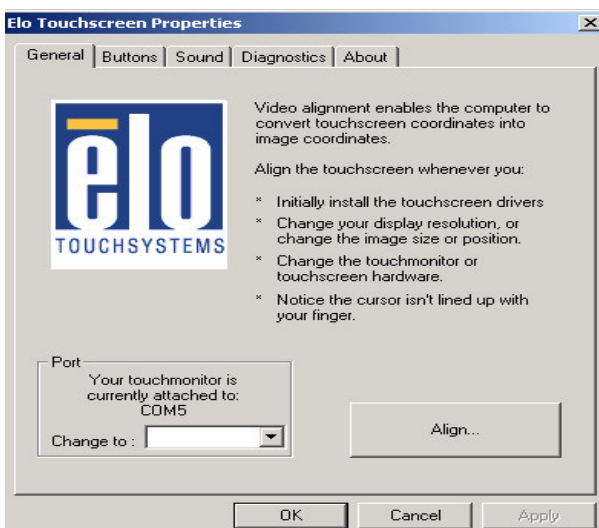
i. After the computer restarted, touch the targets with your finger for alignment.



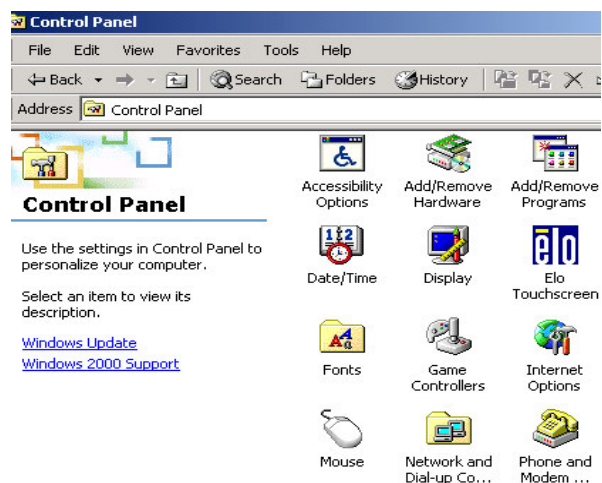
j. Click "Yes" on the Check Video Alignment window.



k. Click "Finish" on the "Elo TouchSystem Setup window.



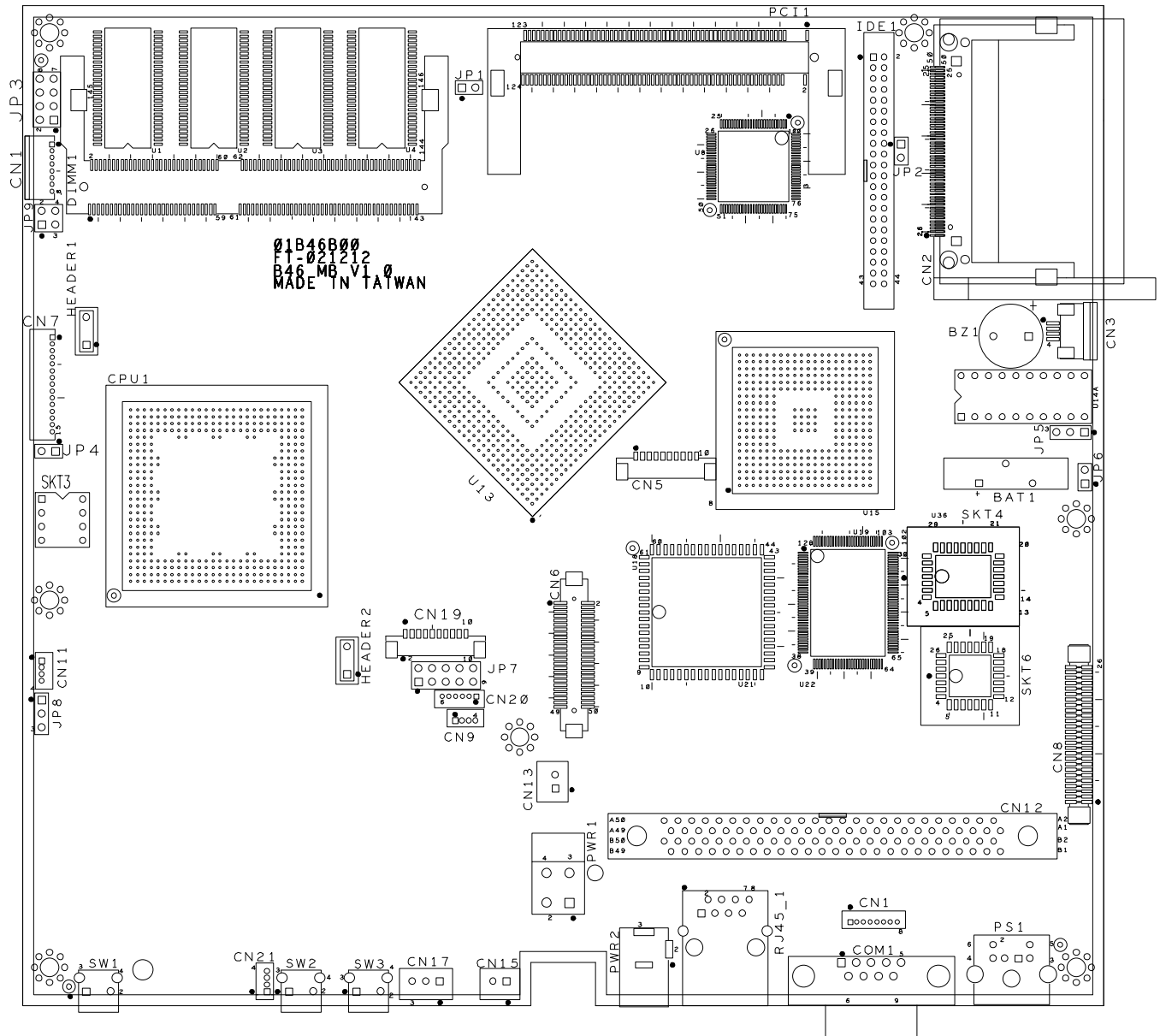
l. If the cursor is not in sync with your finger tip, click "Align..." to execute the alignment procedure again, or click "OK"



m. Now the Elo_Touch driver is installed.

5. Jumper Setting

5.1 B46 Mainboard



5.1.1 Panel Type Selection

Function	JP3			
	1-2	3-4	5-6	7-8
TFT LVDS	OPEN	SHORT	SHORT	SHORT

5.1.2 CMOS Clear Selection

* Factory Default Setting

Function	JP5 (SHORT)
* Normal	1-2
Clear	2-3

5.1.3 DIO Address Selection

* Factory Default Setting

Function	JP6
* 206H	OPEN
386H	SHORT

5.1.4 Panel Brightness Selection

Function	JP8 (SHORT)
TFT	1-2

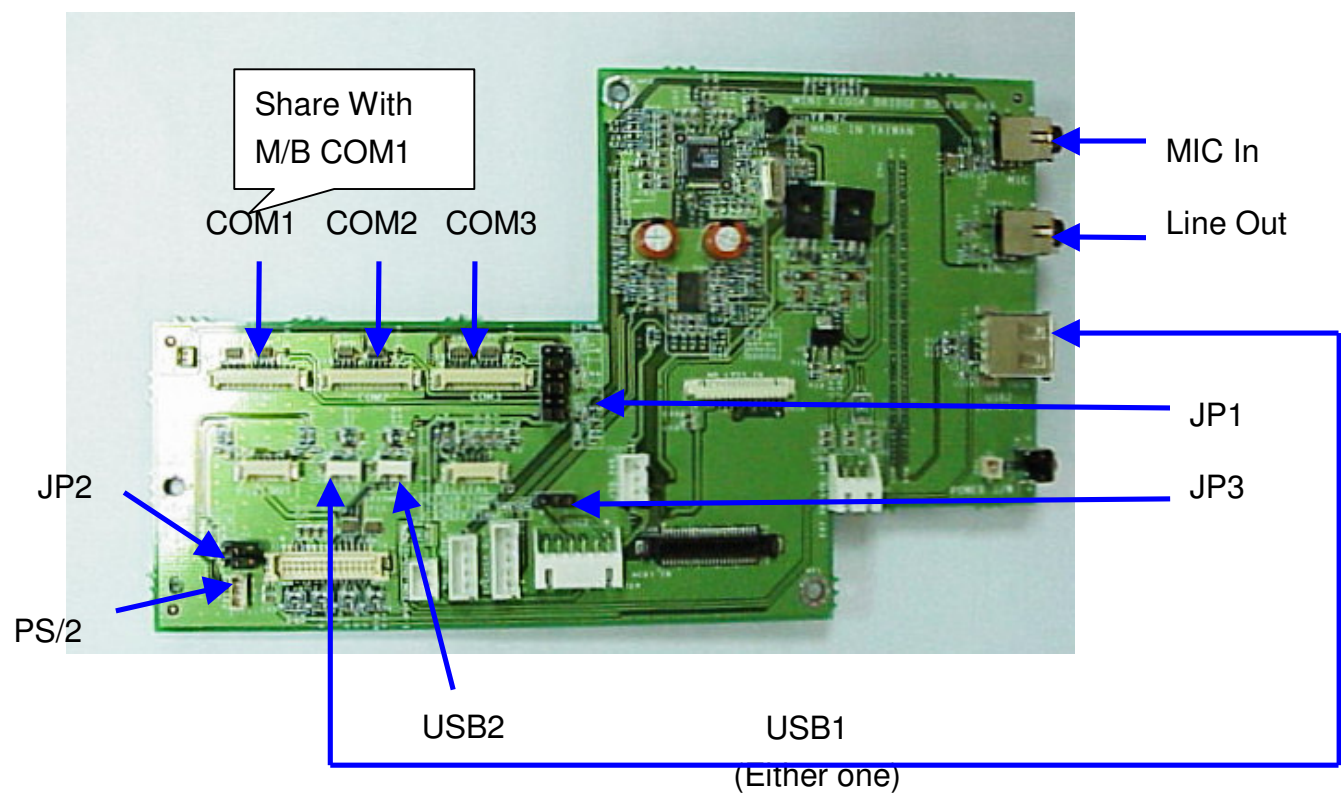
5.1.5 PS/2 Card Reader Selection (Add-on Card Reader or not)

Function	JP9	
	1-2	3-4
Not exist	SHORT	SHORT
*Exist	OPEN	OPEN

Note:

OPEN  SHORT 

5.2 Bridge board



5.2.1 COM port voltage

Function	JP1 (SHORT) * Factory default
COM1 (+5V)	* 1-2
COM1 (+12V)	3-4
COM2 (+5V)	* 5-6
COM2 (+12V)	7-8
COM3 (+5V)	* 9-10
COM3 (+12V)	11-12
No use	All OPEN

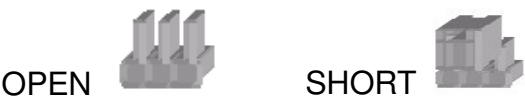
5.2.2 PS/2 Card reader

Function	JP2	
	1-2	3-4
Not Exist	Short	Short
Exist	Open	Open

5.2.3 LCD brightness

Function	JP3 (SHORT)
Setup from M/B	1-2
MAX	* 2-3

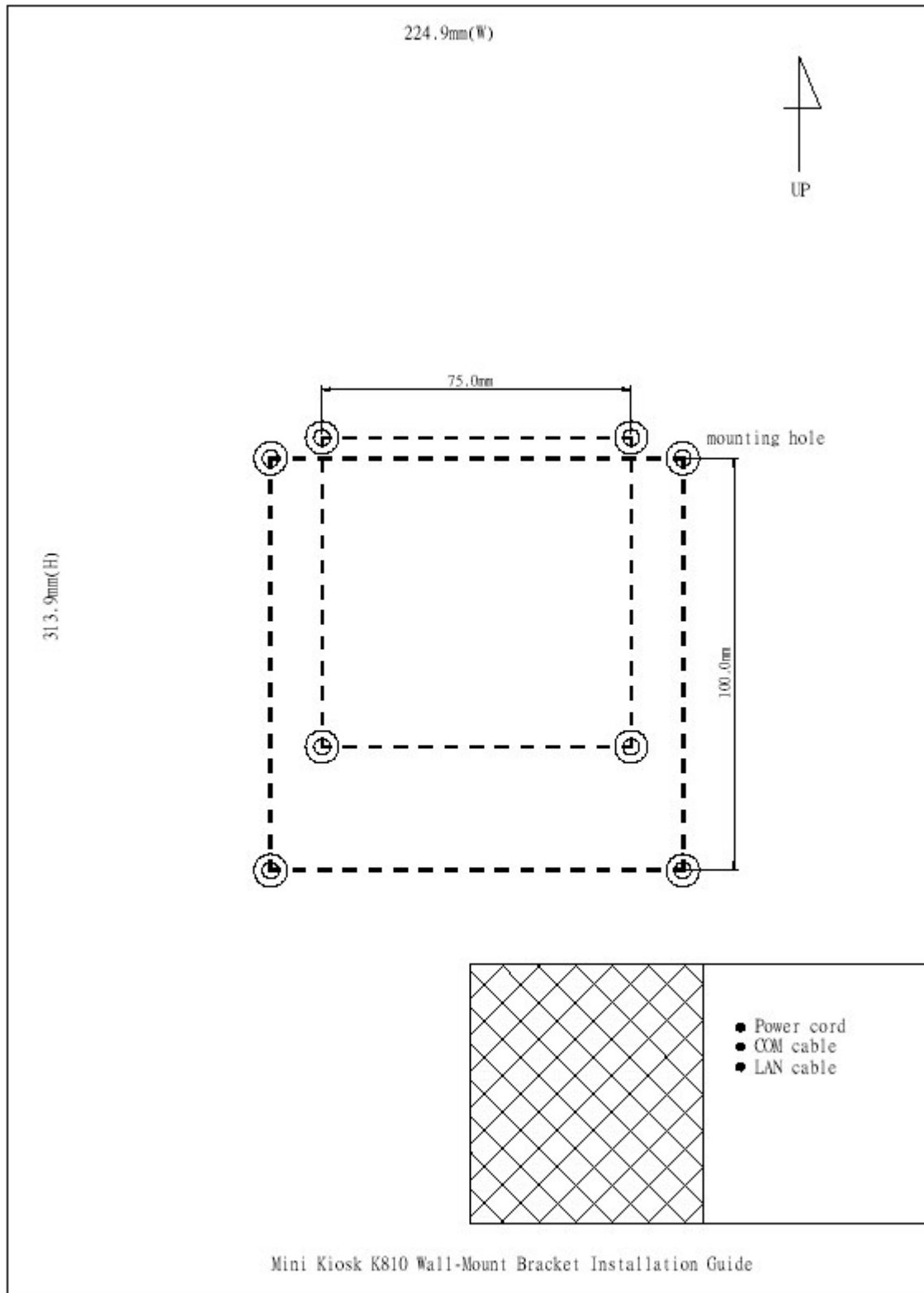
Note:



6.Wall Mount Bracket

Step 1.Remove bracket of Kiosk

Step2. Paste the wall mount bracket install paper on the wall. And Dip four holes according to VESA standard.(75mmx75mm or 100mmx100mm)



Step3. Insert wall mount screws into hole. And put the wall mount bracket on the wall.

Step4 (Choose 1): Cable is through the hole of the wall

- (1) Dip one hole in the bottom right corner, the size base on the wall mount bracket install paper.
- (2) Pull LAN and power cable through the hole of the wall.

Step4 (Choose 2): Cable is through the hole of Kiosk

- (1). Cut the plastic on the hole of the Kiosk case.
- (2). Pull LAN and power cable through the hole.



Step5. Mount the kiosk on the wall.

Step6. Open the door and secure the screw.

