



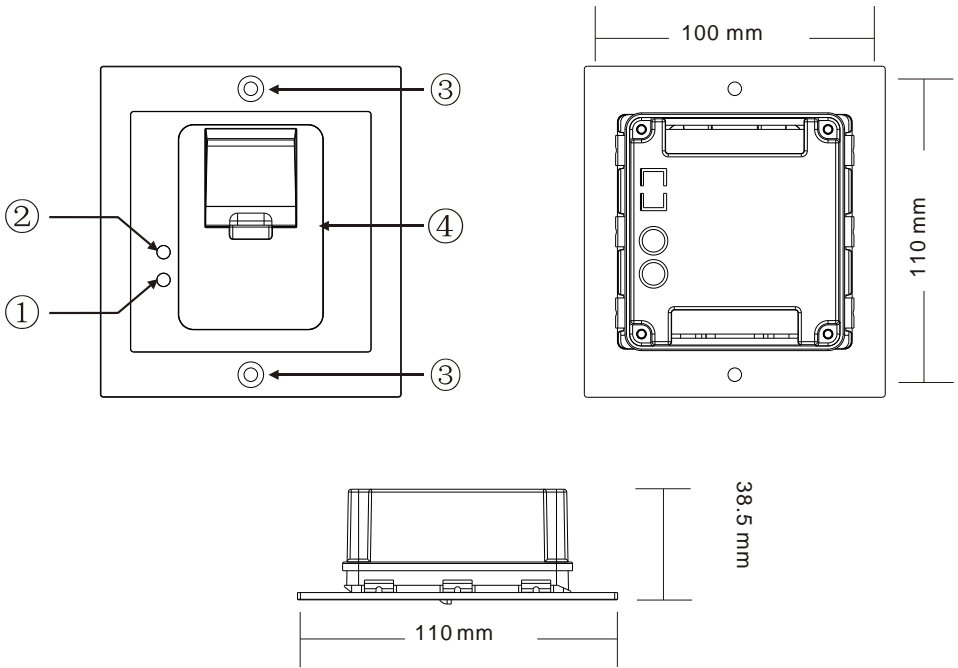
SVT-5100 ACCESS CONTROL FINGERPRINT (SVT19120)

User Manual



Please read this user manual prior to installing the system, and keep it well for future use.

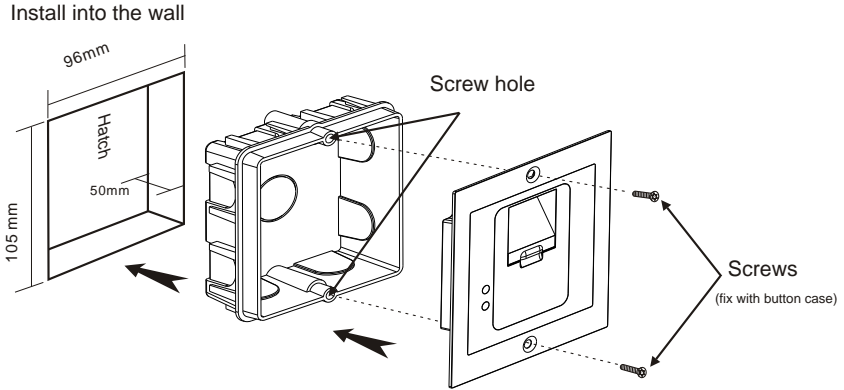
SVT-5100 ACCESS CONTROL FINGERPRINT - SPECIFICATIONS



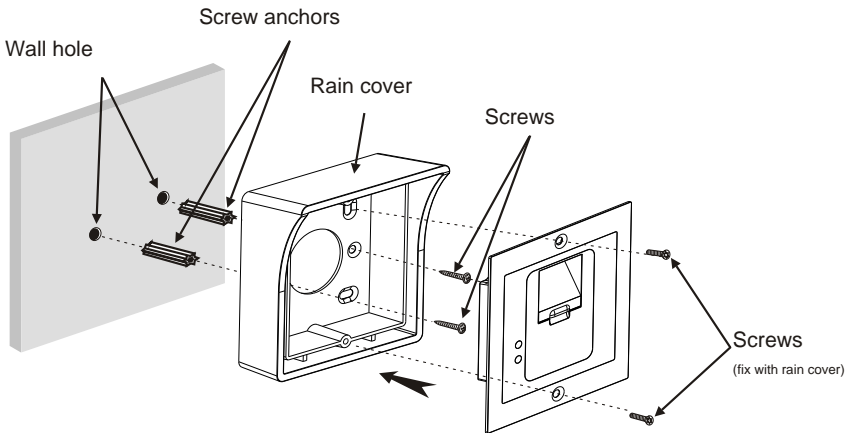
NO.	Description
①	Mode indicator
②	Infrared receptor
③	Screw
④	Fingerprint sensor

Technical Parameters	
Ambient temperature: -20℃~+60℃	Relative humidity: ≤95%
Operating Voltage: DC 14.5V	Standby Current: ≤90mA
Operating Current: ≤120mA	Capacity: maximum 900 fingerprints

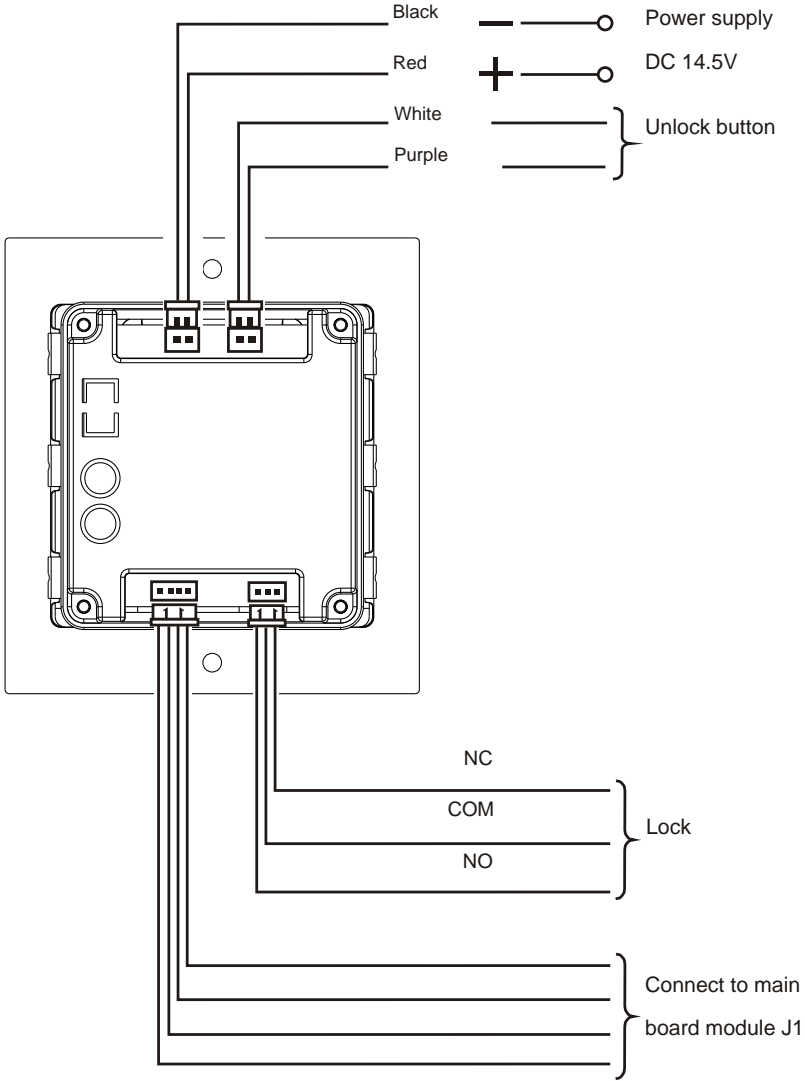
INSTALLATION (without the rain guard)



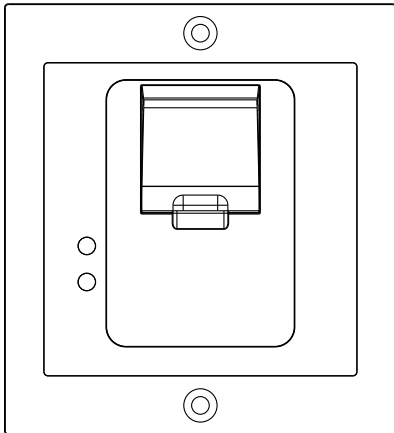
INSTALLATION (with the rain guard)



WIRING CONNECTION



OPERATION



SVT-5100 ACCESS CONTROL FINGERPRINT requires the SVT Remote Control for programming.

Enter the setting mode

Input the admin code twice (default code twice: 1234+1234), the yellow LED will be on. It is in the setting mode.

The default code is: 1234

Modify admin code

In the setting mode:

Press * 3 (Yellow light blinks), and then enter a new admin code (XXXX) twice. If Bi- is heard, it means the modification is successful.

Press # to exit the setting mode.

Notice: In case forget the admin code, power on first, then press # in 3 seconds until Bi is heard. It means admin code is restored successfully as default setting.

Restore factory default

In the setting mode:

Press * 8 (Yellow light blinks), and then enter 9 twice (A continuous Bi- will be heard). The factory default is restored.

Press # to exit the setting mode.

Set the unlocking time

In the setting mode:

Press * 1 (Yellow light blinks), and then enter 2-digit number from 01 to 99 (Bi- is heard, and yellow light stops blinking). This 2-digit number is the unlocking time. For example, enter 05 means the unlocking time is 5 seconds.

Press # to exit the setting mode.

Add fingerprint

In the setting mode:

Press 000-899 (Yellow light blinks. If red light is on, it indicates the position is occupied. Press * twice to delete the information in this position and then add the fingerprint. If green light is on, it indicates the position is vacant. Fingerprint can be added.) + put the finger on the scanner until a Bi sound is heard. Then another Bi and Bi-will be heard. It indicates the addition is successful. If BiBiBi are heard, it indicates the addition fails. If BiBiBiBi are heard, it indicates the fingerprint exists.

Press # to exit the setting mode.

Notice: Maximum 900 fingerprints.

Delete the fingerprint

In the setting mode:

Delete one fingerprint: press 000-899, then press * twice to delete the fingerprint in 000-899. If light turns green means the deletion is successful.

Delete all fingerprint: press * 8 (Yellow light blinks), and then enter 8 twice (A continuous Bi - will be heard). The deletion is successful.

Press # to exit the setting mode.

Set security level

In the setting mode:

Press * 5 (Yellow light blinks), and then enter security level number twice (Parameter range is 1, 2, 3, 4, 5. The higher number indicates the higher accuracy of fingerprint recognition). If Bi- is heard, it indicates the setting is successful. If Bi Bi Bi are heard, it indicates the setting fails.

Press # to exit the setting mode.

The design and specifications of this user manual can be changed without any notification to the user. All copyright and interpretation rights are reserved to SVT Innovations Inc.