

EYENIMAL

A LIVING ADVENTURE



Bark Control Soft

Guide d'utilisation	Fr - 3
----------------------------	---------------

User's guide	Gb - 11
---------------------	----------------

Manual de instrucciones	Es - 19
--------------------------------	----------------

Gebrauchsanleitung	D - 27
---------------------------	---------------

Manuale d'uso	It - 37
----------------------	----------------

**DECLARATION « CE » DE CONFORMITE
« EC » DECLARATION OF CONFORMITY**

NUM'AXES

déclare que / declares that

le collier de régulation des aboiements / bark limiter collar

EYENIMAL Bark Control Soft

est conforme aux normes suivantes / complies with standards below

EN 550 22 – ed 98 A1 : 2000 A2 : 2003

EN 550 24 – ed 98 A1 : 2001 A2 : 2003



NUM'AXES

745 rue de la Bergeresse – Z.A.C. des Aulnaies – B.P. 30157

45161 OLIVET CEDEX – FRANCE

Tél. + 33 (0)2 38 63 64 40 / Fax + 33 (0)2 38 63 31 00

04/08 - M. Pascal GOUACHE - Président du Directoire

A handwritten signature in black ink, appearing to be 'P. Gouache'.

User's guide

Gb - 11

Thank you for choosing the **EYENIMAL** product range. Before using the bark limiter, please read carefully the explanations in this manual, and keep it safely for future reference.

● Advice to obtain the best results

The owner's involvement during the first use of the product is a key factor in obtaining the best results.

Do not leave your dog unattended with the collar on **until he is used to wearing it and you are satisfied that it is working correctly. You should ensure that the settings** (detection sensitivity / mode) **are adjusted correctly for your dog.**

Closely watch your pet during the first days' use.

When your dog is barking, let the collar operate without interference. Any interference on your part could be taken as a sign of consideration and consequently barking would be an effective means to have your attention attracted.

As soon as your dog stops barking, congratulate him **(but not excessively)** by stroking him, verbally flattering him, or giving him dry food so as to encourage him to behave himself.

Remember that barking can indicate some behavioral problems. The bark limiter collar will allow you to resolve problems caused by excessive barking.

● Package contents

- collar equipped with a short bark sensor
- nylon strap
- 3 Volt CR 2450 lithium battery
- magnetic key (magnet)
- long bark sensor
- small plastic screwdriver
- this user's manual

● Description of the product

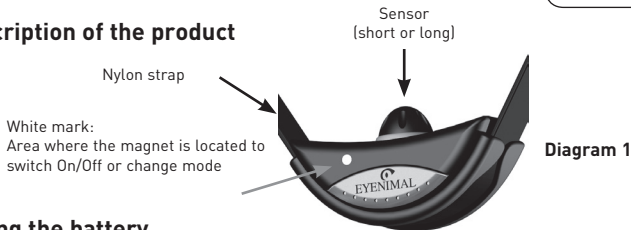


Diagram 1

● Fitting the battery

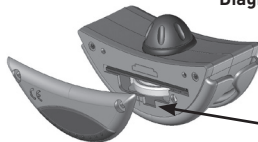
- Remove the screws from the battery cover with a screwdriver.
- Remove the battery cover.
- Insert the 3 Volt CR 2450 lithium battery as indicated under the battery holder (See diagram 2).
- A beep sound is emitted indicating that the battery was properly inserted. If you do not hear any beep sound after inserting the battery, immediately remove it from the battery holder by using the supplied magnet (magnetic key) or by tapping briefly the case in the palm of your hand. Check the polarity before inserting the battery once again. If you still do not hear any beep sound, check the operation by switching the collar On and Off.
- Put the battery cover back in place taking care to insert first the little pin at the bottom of the battery cover (See diagram 3).
- Retighten moderately the 2 screws.

Diagram 3



Diagram 2

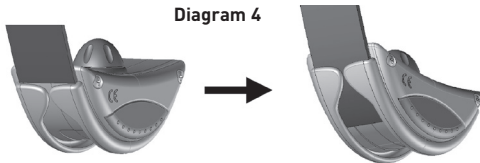
« + » terminal
of the battery
downward



Put the battery
cover back in
place taking care
to insert first the
little pin at the
bottom of the
battery cover

● Fitting the strap

- glide the strap alongside the case (See diagram 4)
- place the slide buckle on the strap
- attach the quick-snap buckle to the free edge of the strap

Diagram 4

● **Switching On the collar**

Briefly place (for less than 1 second) the magnetic key close to the white mark located in front of the collar.

1, 2 or 3 short beep sounds are emitted (according to the chosen mode) and indicate that the collar has been switched on.

In the factory, the collar's mode is positioned on mode 3 (ultrasounds + vibrations).

● **Switching Off the collar**

Briefly place (for less than 1 second) the magnetic key close to the white mark located in front of the collar.

1 long beep sound indicates that the collar has been switched off.

● **Changing modes**

In the factory, the collar's mode is positioned on mode 3 (ultrasounds + vibrations).

To change the collar's mode, when switching on the collar you need to approach and keep the magnetic key in contact with the white mark.

A series of beep sounds is emitted (from 1 to 3 beeps) indicating the selected mode.

Keep the magnetic key in contact with the white mark to run through modes.

Remove the magnetic key when you have reached the mode you wish.

The collar will memorize your selected mode.

Next time you will switch on the collar, your collar will be turned on to the last mode you previously selected.

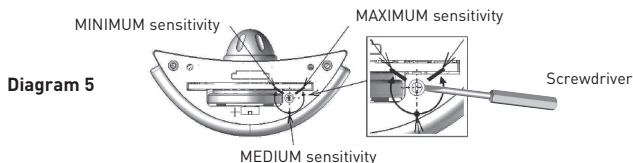
Number of beep sounds heard when switching modes	Mode	Operation
1	1	ultrasounds only
2	2	vibrations only
3	3	ultrasounds + vibrations

● Setting the barking detection sensitivity

Setting the barking detection sensitivity ensures detection of any barking but helps avoid unnecessary detection. The detection, must therefore be sufficiently sensitive but not overly sensitive. In factory, barking detection sensitivity is set on the maximum position (maximum sensitivity).

To adapt the detection sensitivity to the barking strength of your dog, you should proceed as follows:

- Remove the 2 screws from the battery cover with a screwdriver.
 - Remove the battery cover.
 - Carefully turn the setting screw according to the sensitivity you wish (See. Diagram 5)
- Caution: the adjustment system has a stop for the minimum sensitivity and a stop for the maximum sensitivity. Turn delicately and without forcing with the supplied screwdriver.**
- Put the battery cover back in place taking care to insert first the little pin at the bottom of the battery cover (See diagram 3).
 - Retighten moderately the 2 screws.



● Checking/ Replacing battery

When the battery is too weak for the operation of the product, beep sounds indicate it in 2 cases:

- When switching On the collar: a series of close beep sounds + number of beeps meant to indicate the operating mode are emitted

- When switching Off the collar: a series of close beep sounds is emitted

When the battery is too weak, the product works under safety mode, which means that it is out of use.

Due to greater use during your dog's training, your first battery may not last as long as replacement batteries.

Replace the old battery with a new one as follows:

- Remove the 2 screws from the battery cover using a screwdriver.

- Remove the battery cover.

- Knock out the dry battery by using the supplied magnet (magnetic key) or by tapping briefly the case in the palm of your hand.

- Insert the new battery (See § Fitting the battery).

● Changing the sensor

Two different length sensors are included in the package. The size should be long enough to have proper contact with the dog's skin, enabling the device to operate correctly.

If you have a long haired dog and the short sensor fitted to the collar in the factory is inadequate, remove the short sensor and replace it with the long one supplied with the kit.

When changing the sensor, do not press on the threaded rod, it could damage the components underneath. A moderate manual screwing is sufficient (do not use any key). If you screw the sensor too much, bark detection is likely to be inefficient.

● Fitting the collar

The strap should be adjusted so that the sensor comes right into contact with the dog's skin in order to ensure good barking detection.

- If the strap is too loose, the collar will not operate properly. Moreover, it might move around the dog's neck and repeated rubbing of the sensor on the skin can cause irritation.

- If the strap is too tight, the dog will have difficulties in breathing.

Do not leave the collar more than 8 hours a day around your dog's neck and take the time to check that there are no signs of irritation when your dog is not wearing it. If this happens, remove the collar until all signs of skin irritation have disappeared.

● **Checking the device operates correctly**

- Switch on the collar (turn the collar on mode 3, thus you will be able to check the operation of ultrasounds and vibrations).
- Slowly rub the sensor on a slightly rough surface (change the detection sensitivity if necessary).
- The collar will emit ultrasounds and/or vibrations (according to the chosen configuration).

IMPORTANT: after being activated 5 times in quick succession, the collar will automatically go into safety mode for 15 seconds, before restarting itself normally.

● **Cautions for use**

- The collar should be used on dogs only over 6 months old.
- Before using the collar, it is important to have your dog checked by your vet to ensure it is fit to wear a bark limiter.
- The collar is weatherproof but not waterproof.
- To avoid unintentional triggering, the dog should not wear a medal, metallic collar, or any other kind of collar together with the bark limiter collar.
- If you do not use the collar for a long period of time, we advise you to remove the battery. Never leave a discharged battery in the collar.
- Keep the collar out of reach of children.

● **Maintenance**

Do not use volatile liquids such as solvents or benzene to clean your bark limiter collar. Use a soft cloth, slightly moistened with water or a neutral detergent. The nylon strap can be washed with soapy water.

● **Troubleshooting**

Before thinking your collar is broken, read this booklet over and **make sure that the problem is not caused by a weak battery or by a sensor screwed too tightly.**

If the problem persists, contact **your distributor** or check out on **www.numaxes.com**.

You can also contact NUM'AXES at **+33.2.38.69.96.27** or by Email **export@numaxes.com**

Depending on the extent of the malfunction, you may have to return your product for service and repair.

For all repairs, please supply the following:

- the complete product
- the proof of purchase (invoice or sales receipt)

If you omit one of these items, the After Sales Service will have to invoice you for any repair costs incurred.

● Technical characteristics

Power	3 Volt CR 2450 lithium battery
Battery life	90 days
Tightness	Showproof
Battery waste indicator	Beep sounds indicator
Operation modes	3
Setting of bark detection sensitivity	By potentiometer
Dimensions	64 x 30 x 25 mm
Weight (battery included)	52 g
Adjustable collar for necks	from 17 to 55 cm
Use temperature	Between - 20°C and + 50°C

● Guarantee

NUM'AXES guarantees the product against production defects for 2 years after purchase. All postage and packing charges will be the purchaser's sole responsibility.

● Guarantee conditions

1. The guarantee will be valid only if the proof of purchase (invoice or sales receipt), without cancellation, is submitted to the distributor or to **NUM'AXES**. The guarantee is limited to the original purchaser.
2. This guarantee does not cover the following:
 - Changing the battery
 - Changing the strap
 - Direct or indirect transport risks incurred when sending the article back to the distributor or **NUM'AXES**
 - Damage to the article caused by:
 - negligence or incorrect use (ex: bites, breakage, cracking)
 - use contrary to the instructions or not envisioned therein
 - repairs performed by unauthorized persons
 - Loss or theft
3. If the product is found to be defective, **NUM'AXES** will either decide to repair or replace it.

4. No claim may be advanced against **NUM'AXES**, particularly in relation to incorrect use or breakdown.
5. **NUM'AXES** reserves the right to modify the characteristics of its products with a view to making technical improvements or to comply with new regulations.
6. The information contained in this guide may be subject to amendment without prior notice.
7. Photos and drawings are not contractual.

● Register your product


Your product can be registered on our website at www.eyenimal.com.

● Spare parts

You can purchase spare parts (batteries, straps, sensors, magnetic keys etc) from your supplier at any time.

● Collection and recycling of your device at the end of its life



The pictogram  which appears on your product means that this one can not be thrown with household refuse.

You have to bring the device to a collection location suitable for treatment, development, recycling, of electronic wastes or bring it back to your distributor.

Adopting this process, you do something for the environment, you contribute to the preservation of natural resources and to the protection of human health.


EYENIMAL
A LIVING ADVENTURE

contact@eyenimal.com
www.eyenimal.com