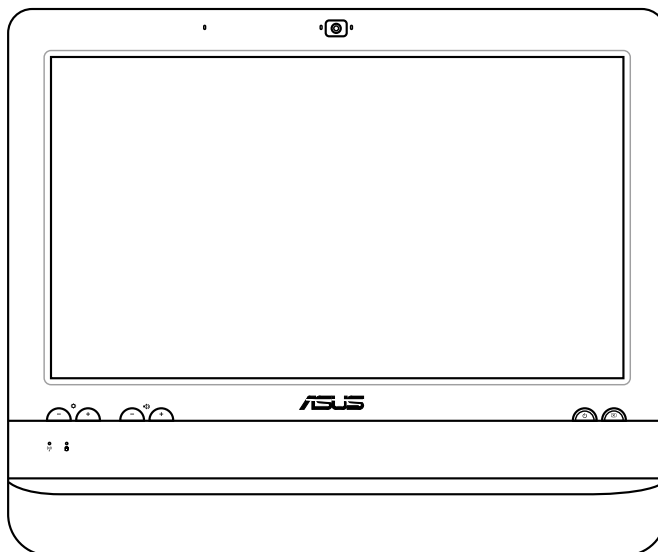


All-in-one PC

User Manual



ET1611 Series

E6344

First Edition V1
January 2011

Copyright © 2011 ASUSTeK COMPUTER INC. All Rights Reserved.

No part of this manual, including the products and software described in it, may be reproduced, transmitted, transcribed, stored in a retrieval system, or translated into any language in any form or by any means, except documentation kept by the purchaser for backup purposes, without the express written permission of ASUSTeK COMPUTER, INC. ("ASUS").

Products and corporate names mentioned in this manual may or may not be registered trademarks or copyrights of their respective companies, and are used for identification purposes only. All trademarks are the property of their respective owners.

Every effort has been made to ensure that the contents of this manual are correct and up to date. However, the manufacturer makes no guarantee regarding the accuracy of its contents, and reserves the right to make changes without prior notice.

Contents

Contents

Notices.....	4
Notes for this manual.....	10
Safety information.....	11
Welcome	13
Package contents	13
Getting to know your ASUS All-in-one PC	14
Front view.....	14
Rear view	16
Side view.....	18
Using the touch screen.....	19
Showing the touch pointer	19
Cleaning the touch screen.....	20
Positioning your ASUS All-in-one PC	21
Placing on the desktop.....	21
Mounting to the wall.....	21
Setting up your ASUS All-in-one PC	23
Connecting the wired keyboard and mouse.....	23
Connecting the wireless keyboard and mouse	23
Powering on the system.....	24
Powering off	24
Calibrating the screen.....	25
Configuring a wireless connection	26
Configuring a wired connection	27
Using a static IP	27
Using a dynamic IP (PPPoE).....	29
Configuring the audio output.....	32
Speaker configurations.....	32
Connecting to speakers.....	32
Recovering your system.....	33
Using the hidden partition.....	33

Notices

Federal Communications Commission Statement

This device complies with Part 15 of the FCC Rules. Operation is subject to the following two conditions:

- This device may not cause harmful interference, and
- This device must accept any interference received including interference that may cause undesired operation.

This equipment has been tested and found to comply with the limits for a Class B digital device, pursuant to Part 15 of the FCC Rules. These limits are designed to provide reasonable protection against harmful interference in a residential installation. This equipment generates, uses and can radiate radio frequency energy and, if not installed and used in accordance with manufacturer's instructions, may cause harmful interference to radio communications. However, there is no guarantee that interference will not occur in a particular installation. If this equipment does cause harmful interference to radio or television reception, which can be determined by turning the equipment off and on, the user is encouraged to try to correct the interference by one or more of the following measures:

- Reorient or relocate the receiving antenna.
- Increase the separation between the equipment and receiver.
- Connect the equipment to an outlet on a circuit different from that to which the receiver is connected.
- Consult the dealer or an experienced radio/TV technician for help.

CAUTION: Any changes or modifications not expressly approved by the grantee of this device could void the user's authority to operate the equipment.

RF exposure warning

This equipment must be installed and operated in accordance with provided instructions and the antenna(s) used for this transmitter must be installed to provide a separation distance of at least 20 cm from all persons and must not be co-located or operating in conjunction with any other antenna or transmitter. End-users and installers must be provide with antenna installation instructions and transmitter operating conditions for satisfying RF exposure compliance.

Canadian Department of Communications Statement

This digital apparatus does not exceed the Class B limits for radio noise emissions from digital apparatus set out in the Radio Interference Regulations of the Canadian Department of Communications.

This class B digital apparatus complies with Canadian ICES-003.

IC Radiation Exposure Statement for Canada

This equipment complies with IC radiation exposure limits set forth for an uncontrolled environment. To maintain compliance with IC RF exposure compliance requirements, please avoid direct contact to the transmitting antenna during transmitting. End users must follow the specific operating instructions for satisfying RF exposure compliance.

Operation is subject to the following two conditions:

- This device may not cause interference and
- This device must accept any interference, including interference that may cause undesired operation of the device.

Declaration of Conformity (R&TTE directive 1999/5/EC)

The following items were completed and are considered relevant and sufficient:

- Essential requirements as in [Article 3]
- Protection requirements for health and safety as in [Article 3.1a]
- Testing for electric safety according to [EN 60950]
- Protection requirements for electromagnetic compatibility in [Article 3.1b]
- Testing for electromagnetic compatibility in [EN 301 489-1] & [EN 301 489-17]
- Effective use of the radio spectrum as in [Article 3.2]
- Radio test suites according to [EN 300 328-2]

CE Mark Warning

This is a Class B product, in a domestic environment, this product may cause radio interference, in which case the user may be required to take adequate measures.



CE marking for devices without wireless LAN/Bluetooth

The shipped version of this device complies with the requirements of the EEC directives 2004/108/EC "Electromagnetic compatibility" and 2006/95/EC "Low voltage directive".



CE marking for devices with wireless LAN/ Bluetooth

This equipment complies with the requirements of Directive 1999/5/EC of the European Parliament and Commission from 9 March, 1999 governing Radio and Telecommunications Equipment and mutual recognition of conformity.

Wireless Operation Channel for Different Domains

N. America	2.412-2.462 GHz	Ch01 through CH11
Japan	2.412-2.484 GHz	Ch01 through Ch14
Europe ETSI	2.412-2.472 GHz	Ch01 through Ch13

France Restricted Wireless Frequency Bands

Some areas of France have a restricted frequency band. The worst case maximum authorized power indoors are:

- 10mW for the entire 2.4 GHz band (2400 MHz–2483.5 MHz)
- 100mW for frequencies between 2446.5 MHz and 2483.5 MHz



Channels 10 through 13 inclusive operate in the band 2446.6 MHz to 2483.5 MHz.

There are few possibilities for outdoor use: On private property or on the private property of public persons, use is subject to a preliminary authorization procedure by the Ministry of Defense, with maximum authorized power of 100mW in the 2446.5–2483.5 MHz band. Use outdoors on public property is not permitted.

In the departments listed below, for the entire 2.4 GHz band:

- Maximum authorized power indoors is 100mW
- Maximum authorized power outdoors is 10mW

Departments in which the use of the 2400–2483.5 MHz band is permitted with an EIRP of less than 100mW indoors and less than 10mW outdoors:

01 Ain	02 Aisne	03 Allier	05 Hautes Alpes	
08 Ardennes	09 Ariège	11 Aude	12 Aveyron	16 Charente
24 Dordogne	25 Doubs	26 Drôme	32 Gers	36 Indre
37 Indre et Loire	41 Loir et Cher	45 Loiret	50 Manche	55 Meuse
58 Nièvre	59 Nord	60 Oise	61 Orne	63 Puy du Dôme
64 Pyrénées Atlantique	66 Pyrénées Orientales	67 Bas Rhin	68 Haut Rhin	
70 Haute Saône	71 Saône et Loire	75 Paris	82 Tarn et Garonne	
84 Vaucluse	88 Vosges	89 Yonne		
90 Territoire de Belfort	94 Val de Marne			

This requirement is likely to change over time, allowing you to use your wireless LAN card in more areas within France. Please check with ART for the latest information (www.art-telecom.fr)



Your WLAN Card transmits less than 100mW, but more than 10mW.

NO DISASSEMBLY

The warranty does not apply to the products that have been disassembled by users

Lithium-Ion Battery Warning

CAUTION: Danger of explosion if RTC (Real Time Clock) battery is incorrectly replaced. It should be replaced only with the same or equivalent type by the manufacturer. Dispose of used batteries according to the manufacturer's instructions.

No Exposure to Liquids

DO NOT expose to or use near liquids, rain, or moisture. This product is not waterproof or oil-proof.



This symbol of the crossed out wheeled bin indicates that the product (electrical, electronic equipment, and mercury-containing button cell battery) should not be placed in municipal waste. Check local regulations for disposal of electronic products.



DO NOT throw the battery in municipal waste. The symbol of the crossed out wheeled bin indicates that the battery should not be placed in municipal waste.

REACH

Complying with the REACH (Registration, Evaluation, Authorization, and Restriction of Chemicals) regulatory framework, we publish the chemical substances in our products at ASUS REACH website at <http://csr.asus.com/english/REACH.htm>.

Global Environmental Regulation Compliance and Declaration

ASUS follows the green design concept to design and manufacture our products, and makes sure that each stage of the product life cycle of ASUS product is in line with global environmental regulations. In addition, ASUS disclose the relevant information based on regulation requirements.

Please refer to <http://csr.asus.com/english/Compliance.htm> for information disclosure based on regulation requirements ASUS is complied with:

Japan JIS-C-0950 Material Declarations

EU REACH SVHC

Korea RoHS

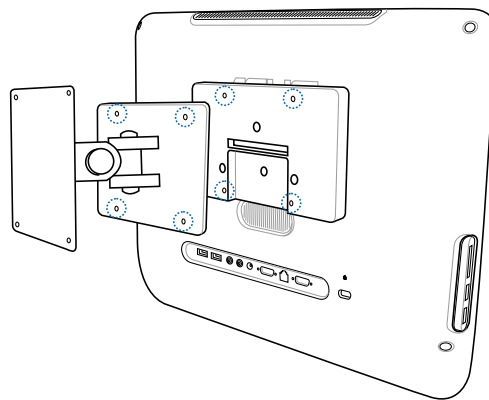
Swiss Energy Laws

Takeback Services

ASUS recycling and takeback programs come from our commitment to the highest standards for protecting our environment. We believe in providing solutions for our customers to be able to responsibly recycle our products, batteries and other components as well as the packaging materials. Please go to <http://csr.asus.com/english/Takeback.htm> for detail recycling information in different region.

UL Safety Precaution

To meet the safety requirements, the All-in-one PC must be mounted to an arm, which guaranties the necessary stability under consideration of the weight of the All-in-one PC. The All-in-one PC shall only be used with an approved arm (e.g. GS mark).



ENERGY STAR complied product



ENERGY STAR is a joint program of the U.S. Environmental Protection Agency and the U.S. Department of Energy helping us all save money and protect the environment through energy efficient products and practices.

All ASUS products with the ENERGY STAR logo comply with the ENERGY STAR standard, and the power management feature is enabled by default. Please visit <http://www.energy.gov/powermanagement> for detail information on power management and its benefits to the environment. In addition, please visit <http://www.energystar.gov> for detail information on the ENERGY STAR joint program.

Notes for this manual

To ensure that you perform certain tasks properly, take note of the following symbols used throughout this manual.



WARNING: Vital information that you **MUST** follow to prevent injury to yourself.



IMPORTANT: Instructions that you **MUST** follow to complete a task.



TIP: Tips and useful information that help you complete a task.



NOTE: Additional information for special situations.

All illustrations and screenshots in this manual are for reference only. Actual product specifications and software screen images may vary with territories. Visit the ASUS website at www.asus.com for the latest information.

Safety information

Your ASUS All-in-one PC ET1611 Series is designed and tested to meet the latest standards of safety for information technology equipment. However, to ensure your safety, it is important that you read the following safety instructions.

Setting up your system

- Read and follow all instructions in the documentation before you operate your system.
- Do not use this product near water or a heated source such as a radiator.
- Set up the system on a stable surface.
- Openings on the chassis are for ventilation. Do not block or cover these openings. Ensure that you leave plenty of space around the system for ventilation. Never insert objects of any kind into the ventilation openings.
- Use this product in environments with ambient temperatures between 0°C and 40°C.
- If you use an extension cord, ensure that the total ampere rating of the devices plugged into the extension cord does not exceed its ampere rating.

Care during use

- Do not walk on the power cord or allow anything to rest on it.
- Do not spill water or any other liquids on your system.
- When the system is turned off, a small amount of electrical current still flows. Always unplug all power, modem, and network cables from the power outlets before cleaning the system.
- The touch screen requires periodic cleaning to achieve the best touch sensitivity. Keep the screen clean from foreign objects or excessive dust accumulation. To clean the screen:
 - Turn off the system and disconnect the power cord from the wall.
 - Spray a small amount of a household glass cleaner onto the supplied cleaning cloth and gently wipe the screen surface.
 - Do not spray the cleaner directly on the screen.
 - Do not use an abrasive cleaner or a coarse cloth when cleaning the screen.
- If you encounter the following technical problems with the product, unplug the power cord and contact a qualified service technician or your retailer.
 - The power cord or plug is damaged.
 - Liquid has been spilled into the system.
 - The system does not function properly even if you follow the operating instructions.
 - The system was dropped or the cabinet is damaged.
 - The system performance changes.



Please do not use sharp objects for touch screen.

Sound Pressure

Warning: Excessive sound pressure from earphones or headphones can cause hearing damage or loss. Please notice that adjusting the volume control and the equalizer to above the center position may increase the earphones or headphones output voltage, and therefore the sound pressure level.

Adapter

1. Adapter information (varies with the purchased model)
 - a. Input voltage: 100–240Vac
Input frequency: 50–60Hz
Rating output current: 120W (19V, 6.3A)
Rating output voltage: 19Vdc
 - b. Input voltage: 100–240Vac
Input frequency: 50–60Hz
Rating output current: 90W (19V, 4.7A)
Rating output voltage: 19Vdc
 - c. Input voltage: 100–240Vac
Input frequency: 50–60Hz
Rating output current: 65W (19V, 3.4A)
Rating output voltage: 19Vdc
 - D. Input voltage: 100–240Vac
Input frequency: 50–60Hz
Rating output current: 40W (19V, 2.1A)
Rating output voltage: 19Vdc
2. The socket outlet must be near to the unit and easily accessible.

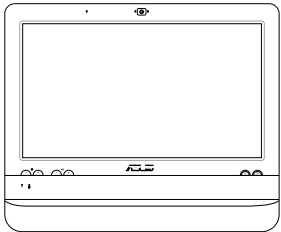
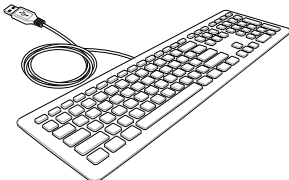
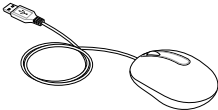
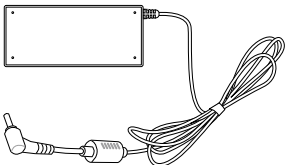
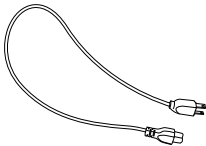
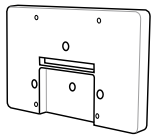
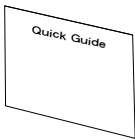
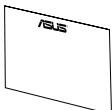
DC Fan

Warning: Please notice the DC fan is a moving part that may be hazardous. Please keep your body from the moving fan blades.

Welcome

Congratulations on your purchase of ASUS All-in-one PC ET1611 Series. The following illustration displays the package contents of your new product. If any of the following items is damaged or missing, contact your retailer.

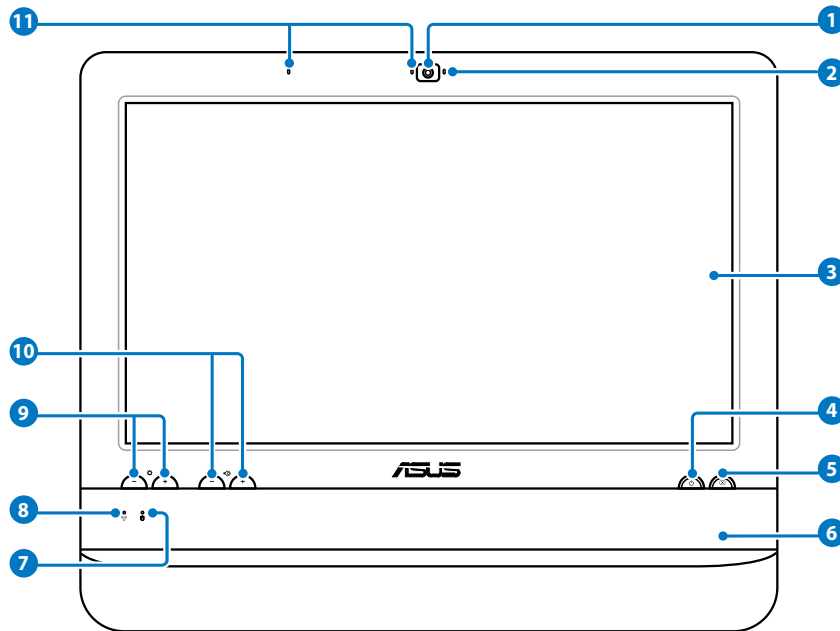
Package contents



		
ASUS All-in-one PC ET1611 Series	Keyboard (wired or wireless)	Mouse (wired or wireless)
		
AC adapter	Power cord	Wall mount pad (optional)
		Note: The keyboard, mouse, and power supply illustrations are for reference only. Actual product specifications may vary with territories.
Quick guide	Warranty card	





Getting to know your ASUS All-in-one PC

Front view

Refer to the following diagram to identify the components on this side of the system.

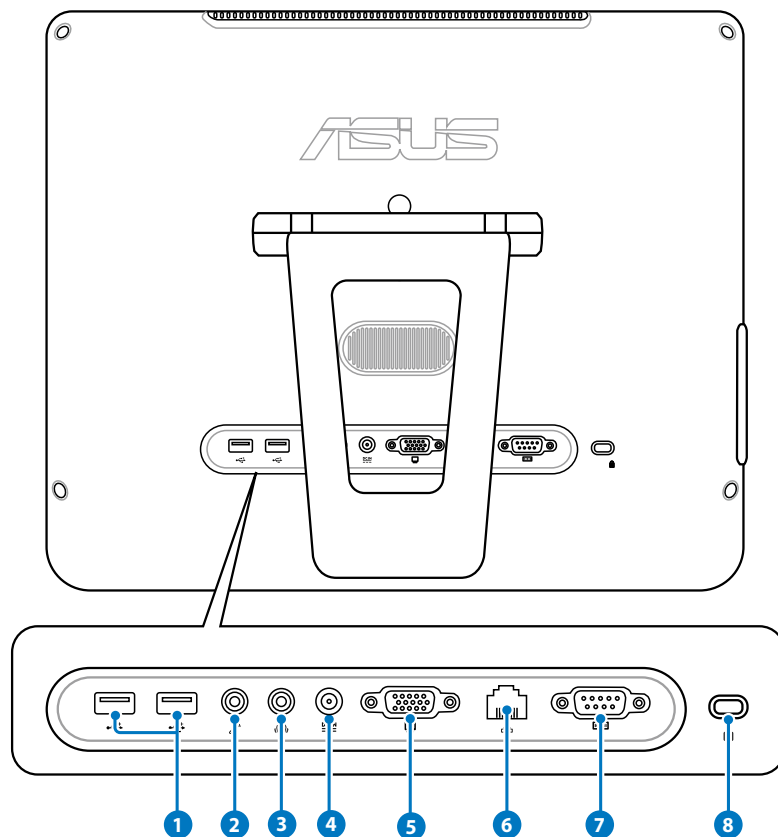


- 1 Webcam**
The built-in webcam with the microphone allows you to start video chats online.
- 2 Webcam LED**
Indicates that the built-in webcam is enabled.
- 3 LCD display (Touch-enabled)**
The 15.6-inch LCD display, with an optimal resolution of 1366 x 768, features touch function that brings digital life to your fingertips.
- 4  Power switch**
The power switch allows you to switch the system ON/OFF.
- 5  LCD display switch**
The LCD display switch allows you to switch the display ON/OFF.

- 6 Stereo speakers**
The built-in stereo speakers deliver high-quality audio output.
- 7  Hard disk drive LED**
Indicates hard disk drive activity.
- 8  Wireless LAN LED**
Indicates that the internal wireless LAN is enabled. (Windows® software settings are necessary to use the wireless LAN.)
- 9  Brightness controls**
The brightness controls adjust the screen brightness level.
- 10  Volume controls**
The volume controls adjust the sound level.
- 11 Microphone**
The built-in microphone with the webcam allows you to start video chats online.

Rear view

Refer to the following diagram to identify the components on this side of the system.



1  **USB port**

The Universal Serial Bus (USB) port is compatible with USB devices such as keyboards, mouse devices, cameras, and hard disk drives.

2  **Microphone jack**

The microphone jack is designed to connect a microphone used for video conferencing, voice narrations, or simple audio recordings.

3  **Headphone/Audio Out jack**

The stereo headphone jack (3.5mm) is used to connect the system's audio out signal to amplified speakers or headphones. Using this jack automatically disables the built-in speakers.

4  **Power input (DC 19V)**

The supplied power adapter converts AC power to DC power for use with this jack. Power supplied through this jack supplies power to the PC. To prevent damage to the PC, always use the supplied power adapter.




The power adapter may become warm or hot when in use. Do not cover the adapter and keep it away from your body.

5  **Display (Monitor) Output**

The 15-pin D-sub monitor port supports a standard VGA-compatible device such as a monitor or projector to allow viewing on a larger external display.

6  **LAN port**

The eight-pin RJ-45 LAN port supports a standard Ethernet cable for connection to a local network.

7  **Serial port (on selected model)**

This 9-pin serial port (COM1) is for serial devices.

8  **Kensington® Lock port**

The Kensington® lock port allows the computer to be secured using Kensington® compatible security products. These security products usually include a metal cable and lock that prevent the computer to be removed from a fixed object.

Side view

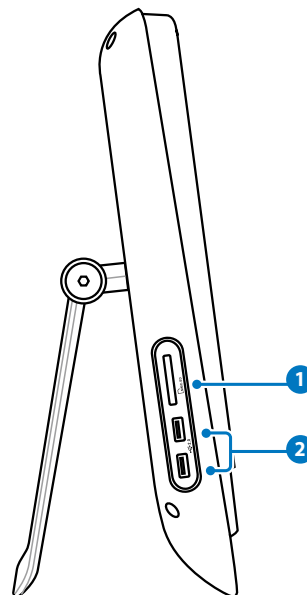
Refer to the following diagram to identify the components on this side of the system.

1  **Memory card reader**

The built-in memory card reader reads MMC/SD cards used in devices like digital cameras, MP3 players, mobile phones, and PDAs.

2  **USB port**

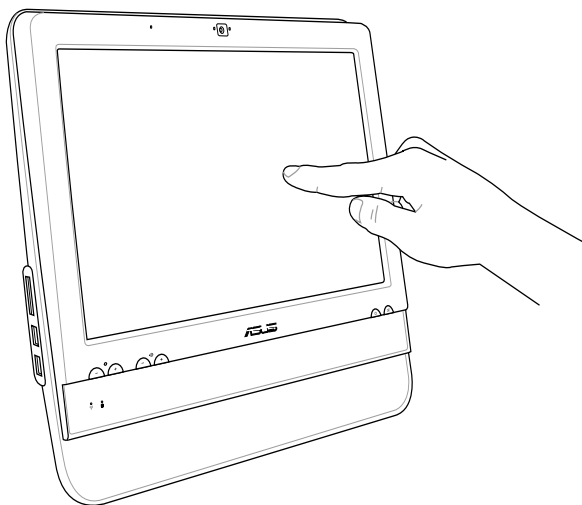
The Universal Serial Bus (USB) port is compatible with USB devices such as keyboards, mouse devices, cameras, and hard disk drives.



Using the touch screen

ASUS All-in-one PC brings digital life to your fingertips. With a few touches, you can make ASUS All-in-one PC work at your command. Your touch functions like a mouse device:

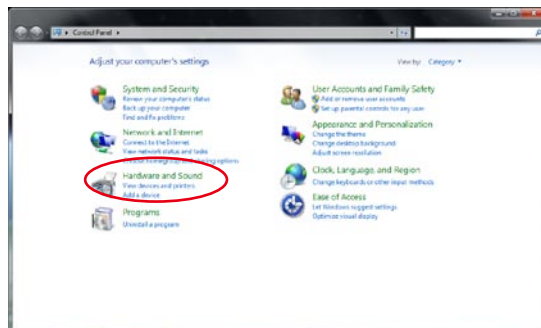
- Touch = left-click on the mouse
- Touch and hold = right-click on the mouse



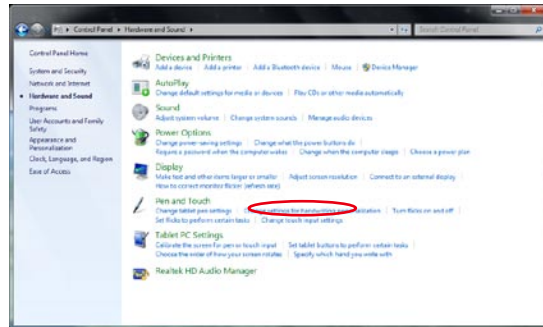
Showing the touch pointer

The touch pointer, virtual mouse, helps you use the touch-enabled screen more conveniently. To show the touch pointer

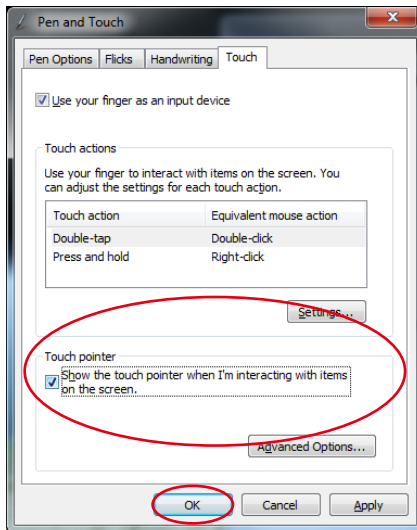
1. From the Windows® desktop, click **Start** > **Control Panel** > **View Devices and Printer**.



- Click **Change touch input settings**.



- Click the **Touch** tab on the top and click the box before **Show the touch pointer when I'm interacting with items on the screen**. Click **OK** to finish the configuration.
- You will see a virtual mouse on the screen when you touch the screen.



Cleaning the touch screen

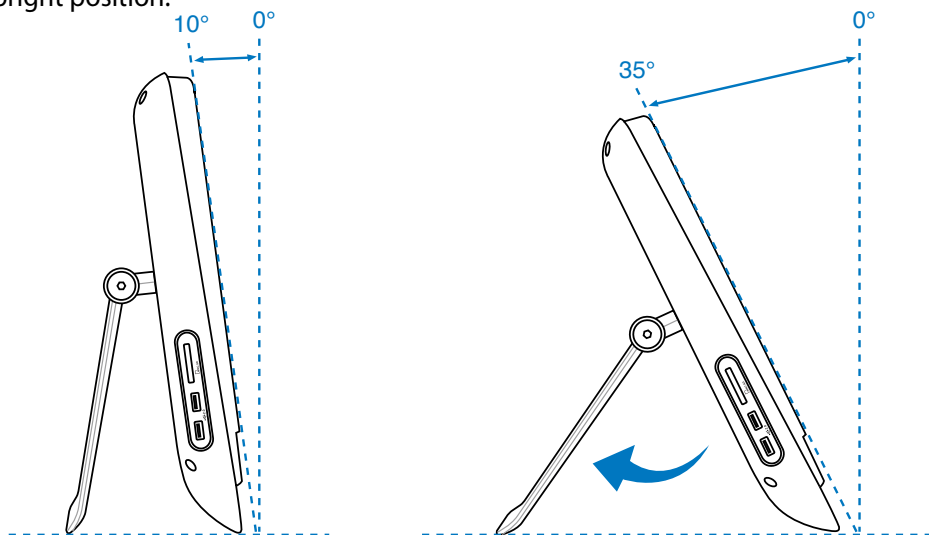
The touch screen requires periodic cleaning to achieve the best touch sensitivity. Keep the screen clean from foreign objects or excessive dust accumulation. To clean the screen:

- Turn off the system and disconnect the power cord from the wall.
- Spray a small amount of a household glass cleaner onto the supplied cleaning cloth and gently wipe the screen surface and the screen frame.
- Do not spray the cleaner directly on the screen.
- Do not use an abrasive cleaner or a coarse cloth when cleaning the screen.

Positioning your ASUS All-in-one PC

Placing on the desktop

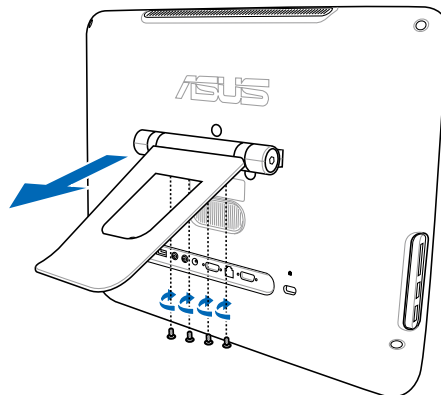
Place your ASUS All-in-one PC on a flat surface such as a table or desk, and pull the stand open until it snaps in place. Then, tilt the display panel to an angle of between 10 and 35 degrees from an upright position.



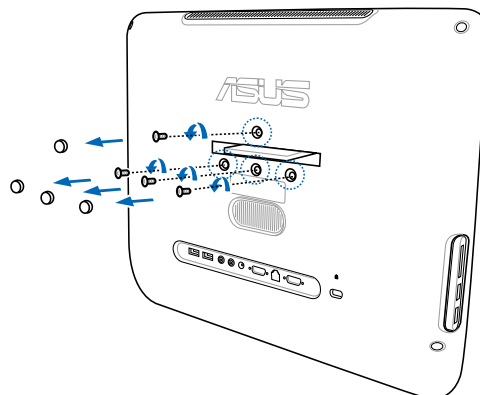
Mounting to the wall

To mount your ASUS All-in-one PC to the wall, purchase the optional wall mount pad (160mm x 92mm) and a wall mount kit (VESA 75). Install the wall mount pad according to the following instructions.

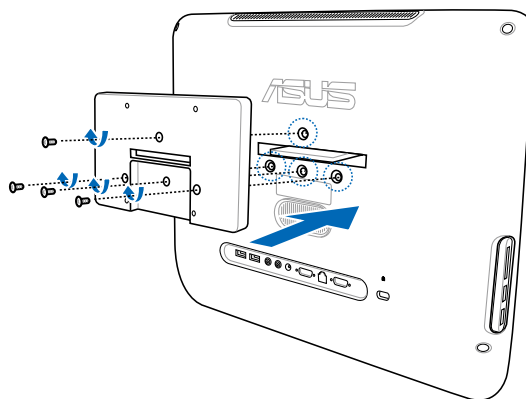
1. Remove the four screws on the stand to release the stand. Keep the screws for future use in case you want to reinstall the stand.



2. Take out the four rubber items in the panel holes, and then remove the four screws from the panel. Keep the screws for later use.



3. Secure the wall mount pad to the rear panel with the four screws (M3 x 8L) you removed in the previous step noting the correct orientation.

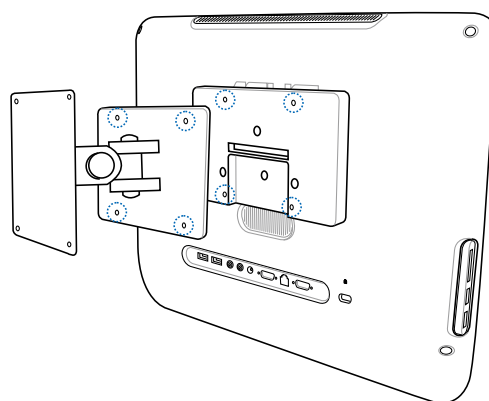


4. Install your wall mount kit (VESA75) to the wall mount pad using four screws (M4 x 10L) that came with the wall mount kit package.



The wall mount kit in this illustration is for reference only.

5. Fasten the wall mount kit to the wall following the instructions described in the installation manual that came with your wall mount kit package.

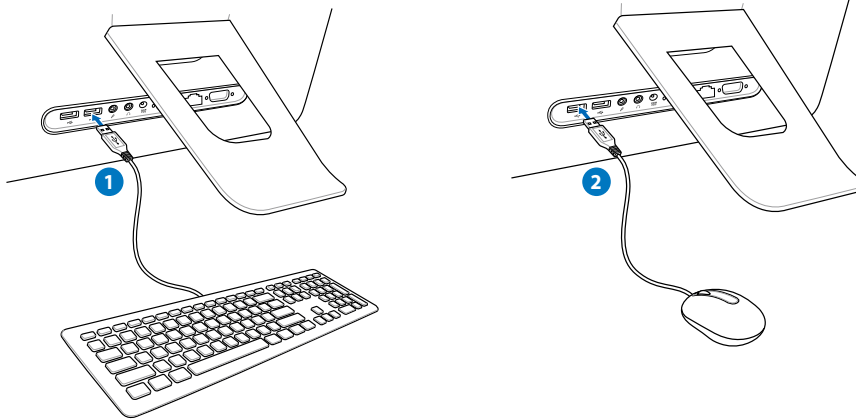


For ventilation's sake, ensure that you leave a distance of 6cm at least between the system and the wall.

Setting up your ASUS All-in-one PC

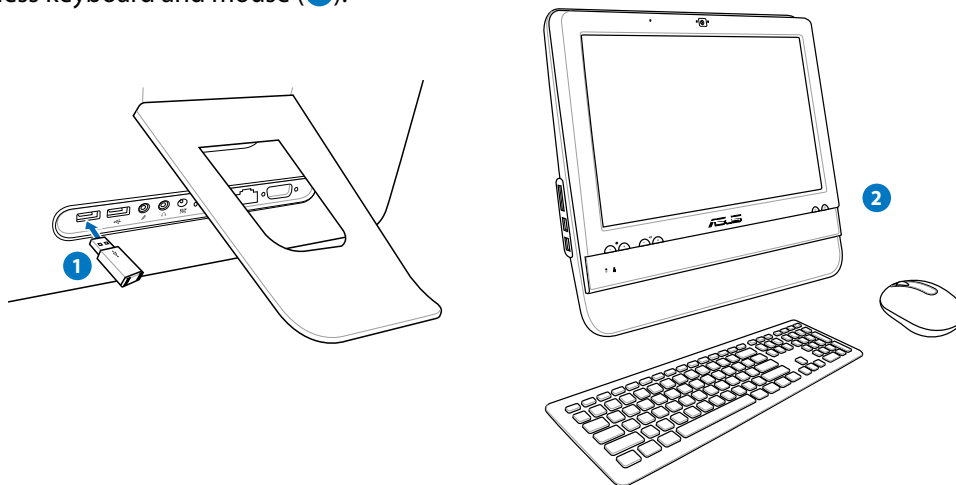
Connecting the wired keyboard and mouse

Connect the keyboard to the **USB** port on the rear panel (1). Then, connect the mouse to another **USB** port on the rear panel (2).



Connecting the wireless keyboard and mouse

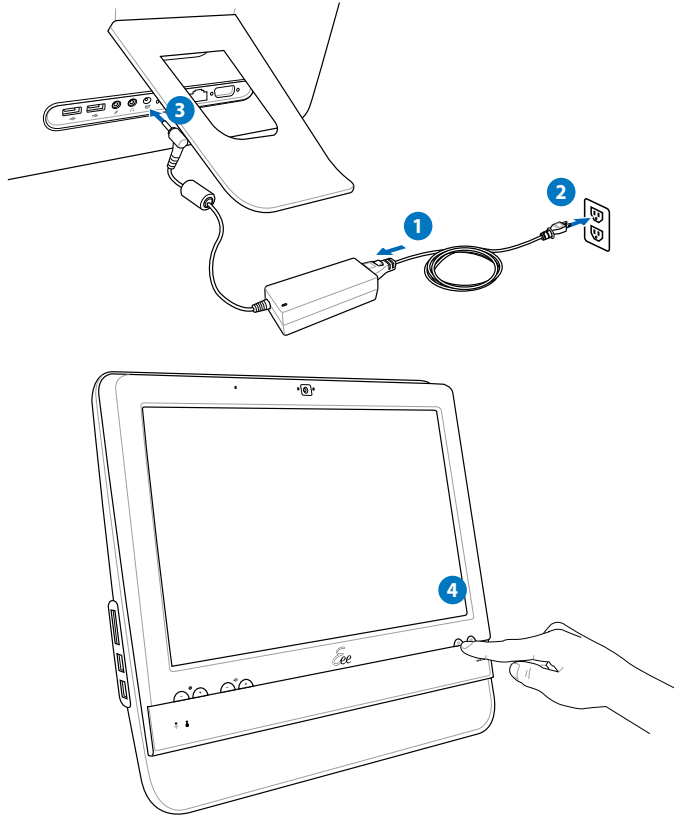
Connect the supplied USB receiver to the **USB** port on the rear panel (1) and begin using the wireless keyboard and mouse (2).





The illustrations above are for reference only. Actual appearances and specifications (wired or wireless) of the keyboard and mouse may vary with territories.

Powering on the system

Connect the supplied AC adapter to the **DC IN** jack on the rear panel (1 2 3) and then press the **Power switch** on the front panel (4) to turn on the system.



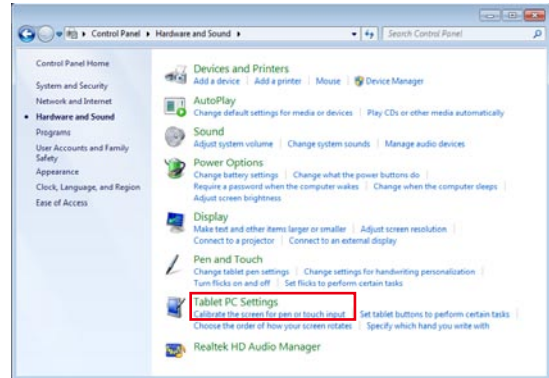
Powering off

- To power off the LCD display, press the **LCD display switch**  on the front panel.
- To put the system into suspend mode, press the **Power switch**  on the front panel. To bring the system back to the OS, press the **Power switch** again, click the mouse, touch the display, or press any key on the keyboard.
- To shut down the system completely, follow the normal Windows shutdown process.

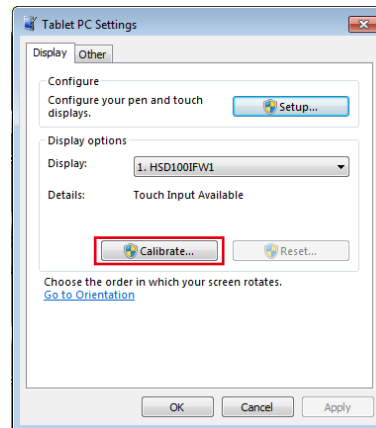
Calibrating the screen

All-in-one PC comes with the following software tool that allows you to adjust touch screen precision.

1. From the Windows® desktop, click **Start** > **Control Panel** > **Hardware and Sound** > **Tablet PC Settings** and click **Calibrate the screen for pen or touch input**.



2. From the **Display** tab, click **Calibrate**.




3. To provide calibration samples, tap the crosshair each time that it appears on the screen.




Right-click anywhere on the screen to return to the last calibration point. Press the **Esc** key on the keyboard to close the tool. Do not change your screen orientation until you have completed the calibration process.



Configuring a wireless connection

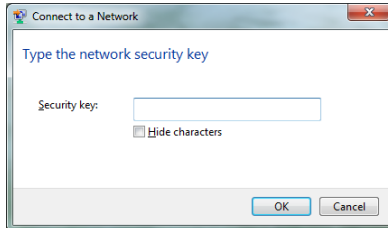
1. Click the wireless network icon with an orange star  in the Windows® Notification area.
2. Select the wireless access point you want to connect to from the list and click **Connect** to build the connection.




If you cannot find the desired access point, click the **Refresh** icon  on the upper right corner to refresh and search in the list again.




Enter the network security key when connecting to a security-enabled network.



3. After a connection has been established, the connection is shown on the list.
4. You can see the wireless network icon  in the Notification area.

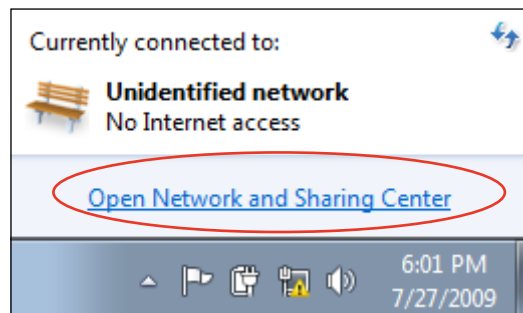
Configuring a wired connection

Using a static IP

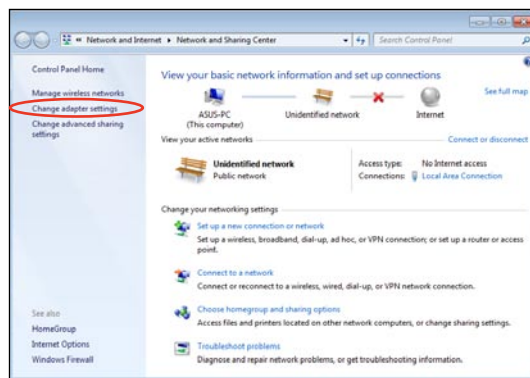
1. Click the network icon with a yellow warning triangle  in the Windows® Notification area and select **Open Network and Sharing Center**.



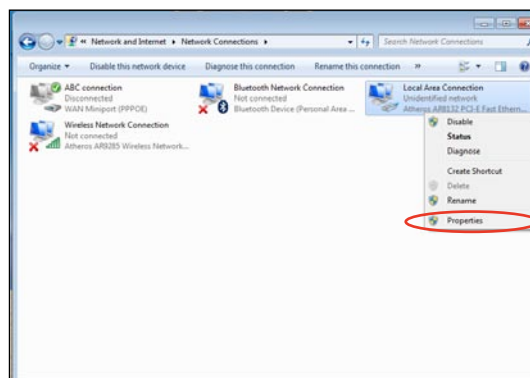
Ensure that you have connected the LAN cable to the All-in-one PC.



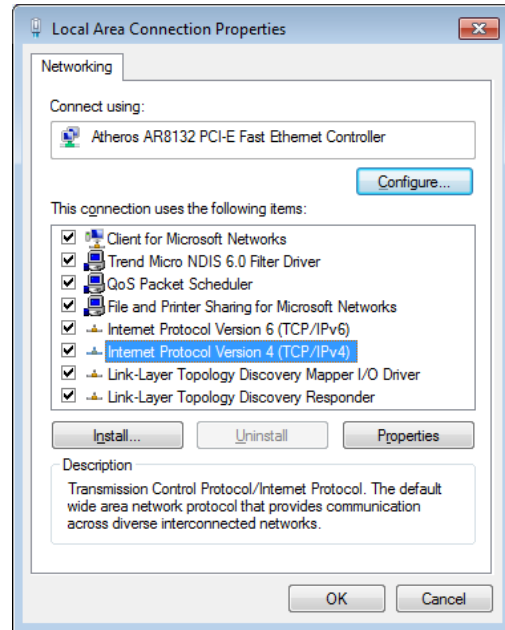
2. Click **Change adapter settings** in the left pane.



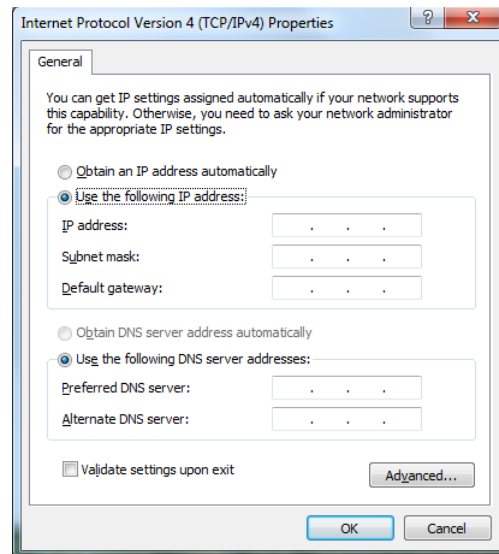
3. Right-click **Local Area Connection** and select **Properties**.



- Click **Internet Protocol Version 4(TCP/IPv4)** and click **Properties**.

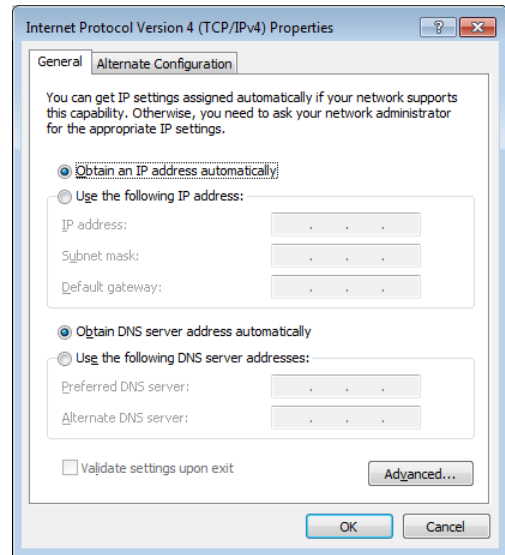


- Select **Use the following IP address**.
- Enter your **IP address, Subnet mask, and Default gateway**.
- If needed, enter the **Preferred DNS server address**.
- After entering all the related values, click **OK** to finish the configuration.



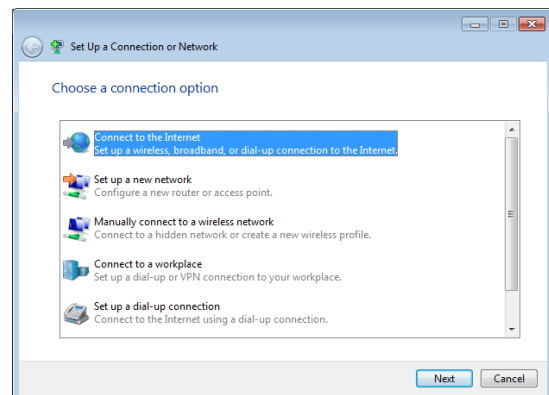
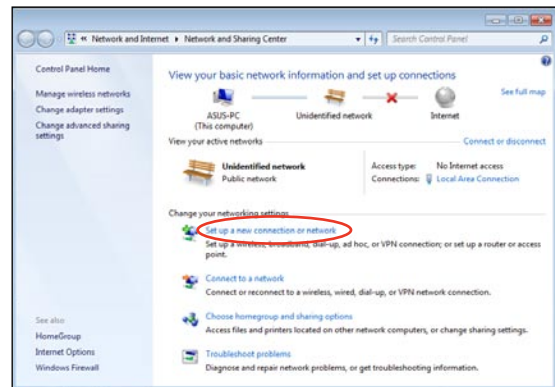
Using a dynamic IP (PPPoE)

1. Repeat steps 1–4 in the previous section.
2. Select **Obtain an IP address automatically** and click **OK**.

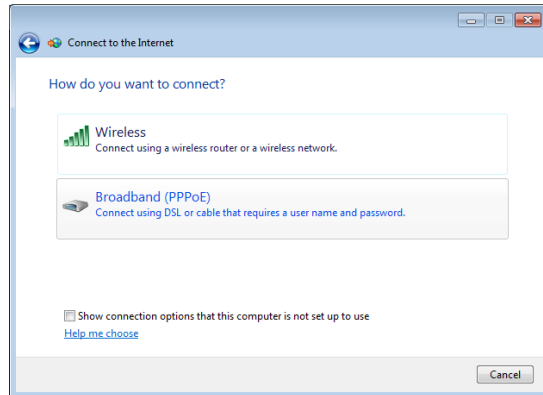


(Continue the following steps if using PPPoE)

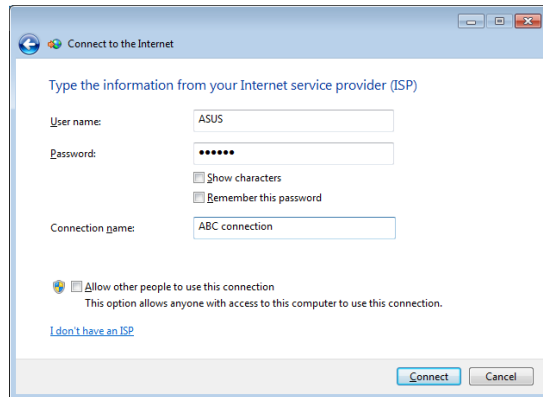
3. Return to the **Network and Sharing Center** and then click **Set up a new connection or network**.
4. Select **Connect to the Internet** and click **Next**.



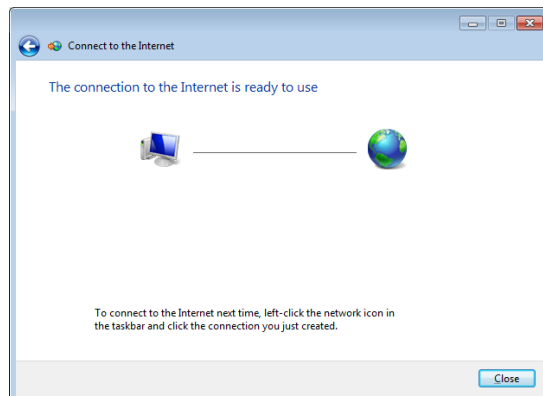
5. Select **Broadband (PPPoE)** and click **Next**.



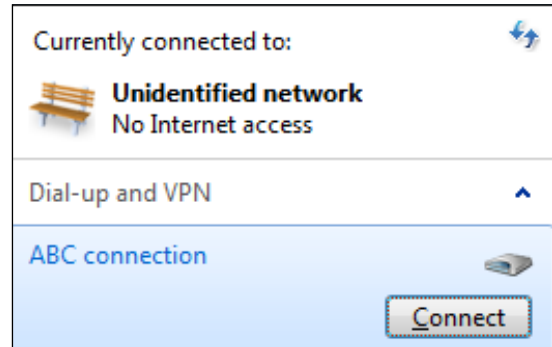
6. Enter your User name and, Password, and Connection name. Click **Connect**.



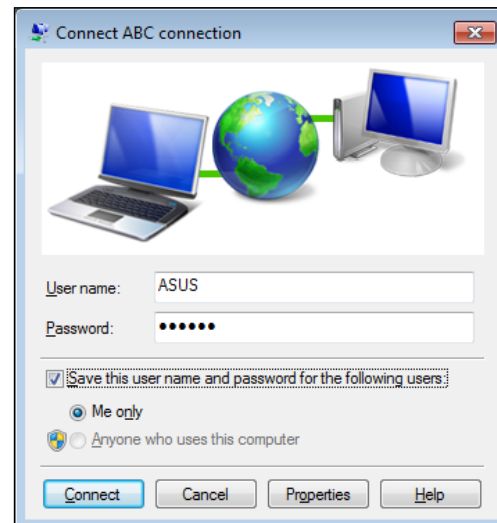
7. Click **Close** to finish the configuration.



- Click the network icon in the notification area and click the connection you just created.



- Enter your user name and password. Click **Connect** to connect to the Internet.



Configuring the audio output

All-in-one PC supports different types of audio configurations. Set up the system using stereo speakers.

Speaker configurations

Set up the system with the following speaker configurations:

Name	Speaker system
2-channel (stereo)	Left speaker and right speaker.

Audio jack	Headphones/2-channel
	Audio Out
	Mic In



A stereo speaker set is a left-right, two channel speaker system. A multi-channel audio speaker has a left-right front and left-right rear (surround) channel.

Connecting to speakers

Refer to the table below for the audio jacks on the left panel and their functions.

For stereo speakers or headphones

Audio jack	Description
	Connects to stereo speakers or headphones.

Recovering your system

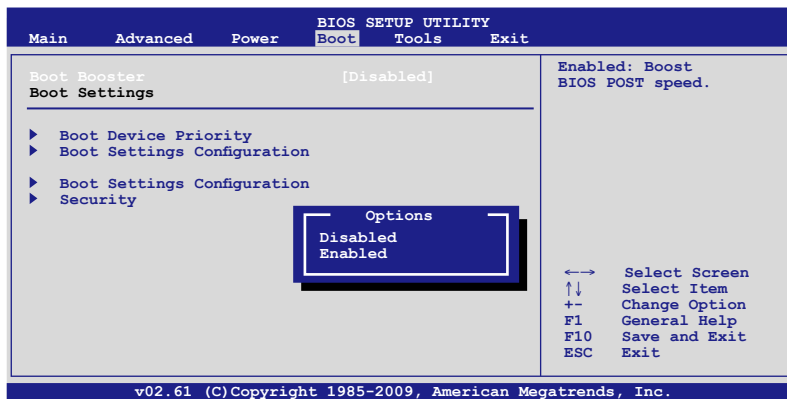
Using the hidden partition

The recovery partition includes an image of the operating system, drivers, and utilities installed on your system at the factory. The recovery partition provides a comprehensive recovery solution that quickly restores your system's software to its original working state, provided that your hard disk drive is in good working order. Before using the recovery partition, copy your data files (such as Outlook PST files) to a USB device or to a network drive and make note of any customized configuration settings (such as network settings).

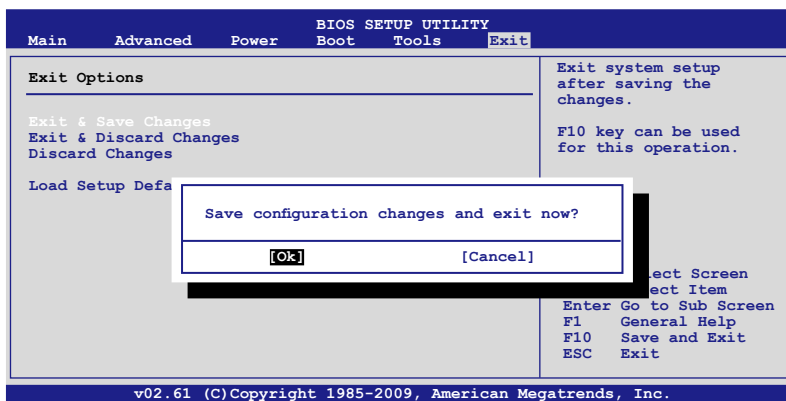
1. Start the system and press <F2> on bootup to show the POST screen. Press <F2> again to enter the BIOS setup.
2. Set **Boot Booster** to [Disabled].



If you fail to see the POST screen or enter the BIOS setup by doing the instruction above, restart the system and try pressing <F2> repeatedly on bootup.



3. Press <F10> to save the configuration and restart ASUS All-in-one PC.



4. When the ASUS logo appears, press <F9> (requires a recovery partition).
5. The **ASUS Recovery CD/DVD** window appears. Select **Recover system to a partition**.
6. Follow the onscreen instructions to complete the recovery process.



You will lose all your data during the system recovery. Make sure that you make a backup of it before recovering the system.

7. After the system recovery is completed, restart the computer.
8. Set up your language, time zone, keyboard, computer name, and user name to enter the Windows® OS.

Manufacturer	ASUSTek COMPUTER INC.
Address, City	No. 150, LI-TE RD., PEITOU, TAIPEI 112, TAIWAN R.O.C
Country	TAIWAN
Authorized Representative in Europe	ASUS COMPUTER GmbH
Address, City	HARKORT STR. 21-23, 40880 RATINGEN
Country	GERMANY