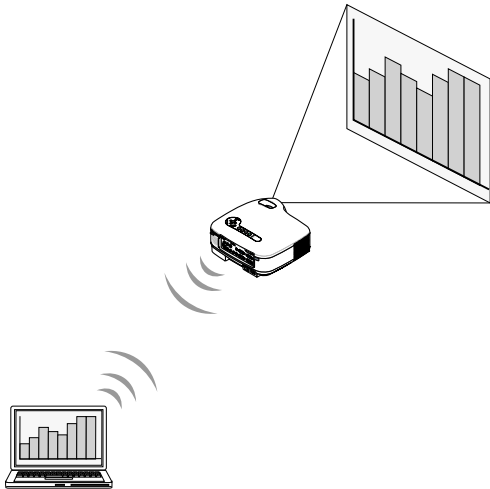


NEC Projector

Image Express Utility 2 for Mac OS

User's Guide

For Mac OS X 10.2.8 and higher



1. What You Can Do with Image Express Utility 2 **1**
2. Operating Environment **2**
3. Setting the LAN Settings for the Projector **3**
4. Setting the LAN Settings for Macintosh **4**
5. Installing Image Express Utility 2 **5**
6. Using Image Express Utility 2 **6**
7. Reference: Setting the Connection by Entering IP Address and Other Configurations **7**

Supported Projector

NP3250/NP2250/NP1250/NP3250W/NP3150/NP2150/NP1150/NP3151W/NP905/
NP901W/VT800/NP2000/NP1000/LT380/LT280/LT265/LT245/WT615/WT610

Introduction

Thank you for purchasing the NEC projector.

This user's guide explains the basic LAN settings to use "Image Express Utility 2 for Mac OS" and how to operate it. For details, consult the help page for "Image Express Utility 2 for Mac OS".

"Image Express Utility 2 for Mac OS" is a software program to send images on the Macintosh screen to a projector via wireless/wired LAN to project them on the screen.

"Image Express Utility 2 for Mac OS" runs on Mac OS X 10.2.8 or higher. It run on Mac OS X (PowerPC) and Mac OS X (Intel) both.

Hereafter "Image Express Utility 2 for Mac OS" is referred to as "Image Express Utility 2" in this guide. The menu in this guide may differ slightly from the actual product as the operations in this guide are explained based on Mac OS X 10.3.6.

- Macintosh, Mac OS X, AirPort, AirPort Extreme are registered trademarks of Apple Inc.
- PowerPC is a registered trademark of International Business Machines Corporation.
- Intel Core is a registered trademark of Intel Corporation.
- Other manufacturer names and product names in this document are registered trademarks or trademarks of the respective companies.

NOTES

- (1) The contents of this guide may not be reprinted in part or whole without permission.
- (2) The contents of this guide are subject to change without notice.
- (3) Great care has been taken in the preparation of this guide; however, should you notice any questionable points, errors or omissions, please contact us.
- (4) Notwithstanding article (3), NEC will not be responsible for any claims on loss of profit or other matters deemed to result from using the Projector.

Contents

Introduction Inside cover

Contents 3

1. What You Can Do with Image Express Utility 2 4

2. Operating Environment 5

 2-1. Supported Projector 5

 2-2. Operating Environment 5

3. Setting the LAN Settings for the Projector 6

4. Setting the LAN Settings for Macintosh 8

5. Installing Image Express Utility 2 10

 5-1. Installation 10

 5-2. Uninstallation 10

6. Using Image Express Utility 2 11

 6-1. Connecting to a projector 11

 6-2. Stopping/Restarting Image Transmission 14

 6-3. Exiting Image Express Utility 2 14

7. Reference: Setting the Connection by Entering IP Address and Other Configurations 15

 7-1. Setting the LAN Settings for the Projector 15

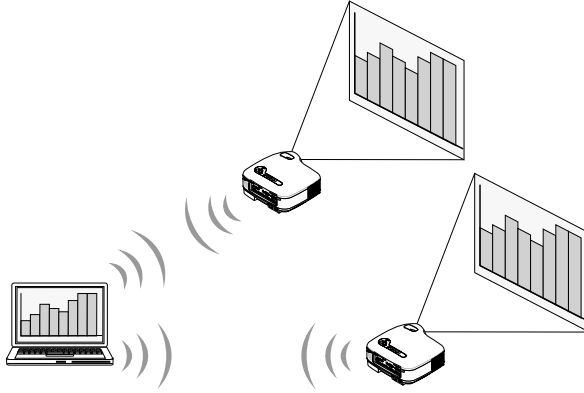
 7-2. Setting the LAN Settings for Macintosh 15

About the Downloading Service 18

For Information 18

1. What You Can Do with Image Express Utility 2

- Via the network images on the screen of your personal computer can be sent to the projector and projected on the screen.Wireless LAN enables you to use the projector without cables.
- One personal computer can send images to more than one projector.



2. Operating Environment

2-1. Supported Projector

Image Express Utility 2 supports the following NEC projector (as of April 2009)

NP Series	NP3250/NP2250/NP1250/NP3250W/NP3150/ NP2150/NP1150/NP3151W/NP905/ NP901W/NP2000/NP1000
LT Series	LT380/LT280/LT265/LT245
WT Series	WT615/WT610
VT Series	VT800*

* The “Easy Connection” function cannot be used with VT800.

Reference

Some of software can be used with projectors other than the above projectors. For details, visit the download page on the NEC projector website.
<http://www.nec-display.com/dl/en/index.html>

2-2. Operating Environment

Supported OS	Mac OS X 10.2.8 or higher required Mac OS X 10.3.0 or higher recommended
Processor (CPU)	PowerPC G3 600 MHz processor required PowerPC G4 800 MHz or higher recommended or Intel Core Solo 1.5 GHz or higher required
Memory	256 MB or higher required
Network Environment	Wired or wireless LAN required that supports TCP/IP Only the AirPort and AirPort Extreme wireless LAN cards are guaranteed to work with Image Express Utility 2 for Mac OS. “Easy Connection” supports only AirPort and AirPort Extreme.
Supported Resolution	VGA (640 x 480) required XGA (1024 x 768) recommended 1024 x 768 - 1280 x 800 recommended (NP3250W/NP3151W/ NP901W)
Supported Screen Colors	Thousands of colors, millions of colors required ●256 or fewer colors are not supported.

3. Setting the LAN Settings for the Projector

This section explains about “Easy Connection” using wireless LAN.

Refer to the manual attached to the projector to enable “Easy Connection”.

- For LT265/LT245/VT800, refer to “User’s Manual (PDF)”
- For NP3250/NP2250/NP1250/NP3250W/NP3150/NP2150/NP1150/NP3151W/NP905/NP901W/NP2000/NP1000/LT380/LT280/WT615/WT610, refer to “Wired and Wireless Network Setup Guide”.

“Easy Connection” is

A unique communication mode that allows you to omit irksome configurations such as IP address, subnet mask and etc. when connecting your personal computer to a projector via wireless LAN.

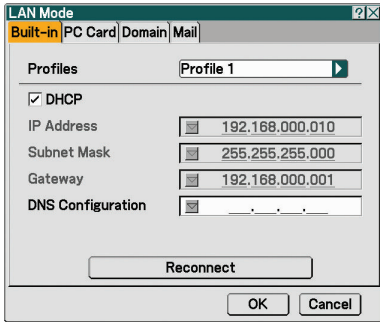
Note

The designs and operations of the on-screen menus of the NP3250/NP2250/NP1250/NP3250W/NP3150/NP2150/NP1150/NP3151W/NP905/NP901W/VT800 are different from the following procedure. Refer to the User’s Manual of the NP3250/NP2250/NP1250/NP3250W/NP3150/NP2150/NP1150/NP3151W/NP905/NP901W/VT800 projector.

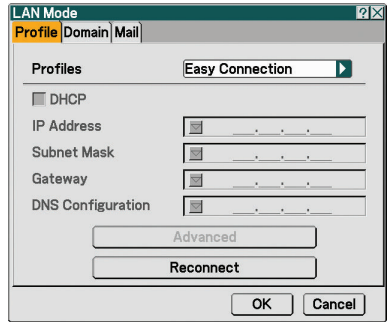
- 1** Turn off the projector and insert the wireless LAN card into the projector.
- 2** Turn on the projector and press the <MENU> button to display the on-screen menu.

- 3** Select [Setup] → [Installation] tab → [LAN Mode] from the on-screen menu.
The [LAN Mode] window will be displayed.

NP2000/NP1000/LT380/LT280/LT265/LT245



WT615/WT610



4 Set “Easy Connection”.

- NP2000/NP1000/LT380/LT280/LT265/LT245


- (1) Select the [PC Card] tab, and confirm that “Easy Connection” has been set in Profiles.
- (2) Highlight [Reconnect], and press the <ENTER> button.
An hourglass icon is displayed on the screen.
- (3) When the hourglass icon disappears, highlight [OK] and press the <ENTER> button.
- (4) Press the <EXIT> button several times to close the on-screen menu.

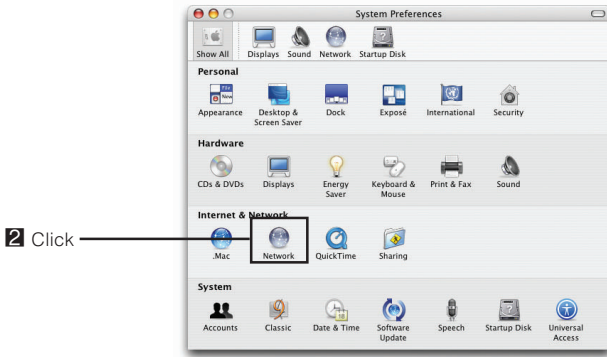
- WT615/WT610

- (1) Confirm that [Easy Connection] has been set in Profiles.
- (2) Highlight [Reconnect], and press the <ENTER> button.
An hourglass icon is displayed on the screen.
- (3) When the hourglass icon disappears, highlight [OK] and press the <ENTER> button.
- (4) Press the <EXIT> button several times to close the on-screen menu.

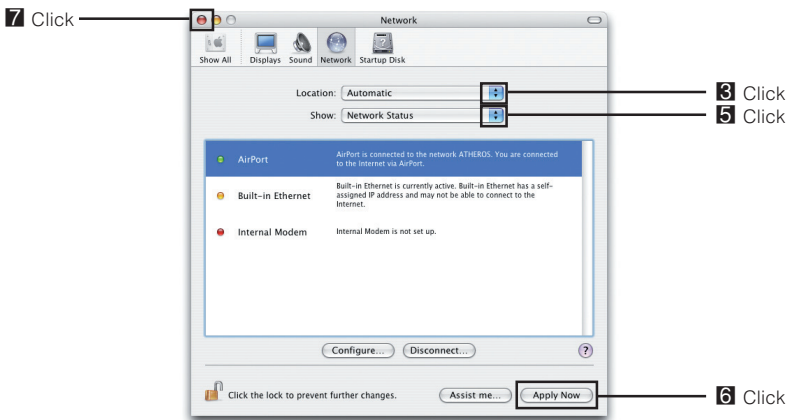
4. Setting the LAN Settings for Macintosh

This section explains the configurations for “Easy Connection” with the projector.

- 1 Click Apple Menu () and [System Preferences...].
The “System Preferences” window will be displayed.



- 2 Click [Network].
The Network configuration window will be displayed.



- 3 Click [Location] and then [New Location...].

4 Enter a new location name and click the [OK] button.

Enter "IEU2" as an example.

**5** Click [Show] and [AirPort].

- For wired LAN connection, click [Built-in Ethernet].

After change to [Built-in Ethernet], set "Manually" in [Configure IPv4] to specify the IP address and other configurations (→ page 15) or set "Using DHCP".

Note

If neither Airport card nor Airport extreme card has been inserted in the Macintosh computer, [AirPort] cannot be chosen.

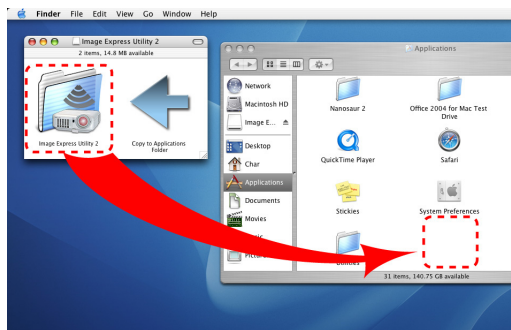
6 Click the [Apply Now] button.**7** Click the [] button at the upper left on the Network configuration window.

The Network configuration window will be closed.

5. Installing Image Express Utility 2

5-1. Installation

- 1** Insert the User Supportware 6 CD-ROM into the CD-ROM drive.
The CD-ROM icon will be displayed on Desktop.
- 2** Double-click the “CD-ROM” icon.
- 3** Double-click the “Mac OS X” icon.
- 4** Double-click the “Image Express Utility 2 (Intel).dmg” icon.
If using a Macintosh PowerPC CPU, double-click the “Image Express Utility 2.dmg” icon.
“Image Express Utility 2” icon will be displayed on Desktop.
- 5** Drag and drop the “Image Express Utility 2” folder into the “Applications” folder.




5-2. Uninstallation

- 1** Move the “Image Express Utility 2” folder to the Trash icon.
- 2** Move the “Preferences” file from the “Image Express Utility 2” folder to the Trash icon.
The Preferences file in the “Image Express Utility 2” is located in “/Users/Your user name/Library/Preferences/jp.co.nec.nevt.ImageExpressUtility.plist”.

6. Using Image Express Utility 2

6-1. Connecting to a projector


- 1 Confirm that the projector has been turned on.
- 2 Click the AirPort status () on the Macintosh menu bar, and click “Turn AirPort On”.

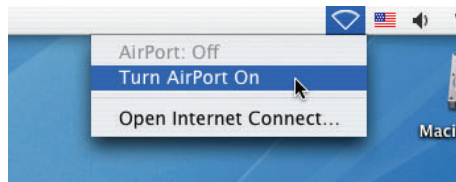
The AirPort status is changed to “  ” or “  ”.

- AirPort status types and meanings





 ...AirPort : Off

 ...AirPort : On (in infrastructure connection)

 ...AirPort : On (in adhoc connection)



Reference

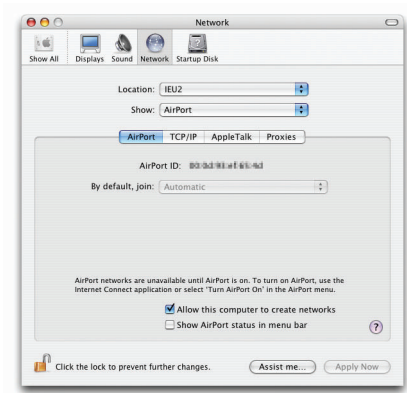
- When the AirPort status ( /  / ) is not displayed on the menu bar:
- (1) Click Apple Menu () and [System Preferences...].
The “System Preferences” window will be displayed.
 - (2) Click [Network].
The Network configuration window will be displayed.
 - (3) Select [AirPort] in [Show].

continued on the following page.

Reference


(4) Click [AirPort] tab.

The AirPort configuration item will be displayed.



(5) Check the “Show AirPort status in menu bar” check box at the bottom configuration item.

The AirPort status ( /  / ) will be displayed on the menu bar.

(6) Click the [] button at the upper left on the Network configuration window.

The Network configuration window will be closed.

3 Double-click the “Image Express Utility 2” icon in the “Image Express Utility 2” folder.



Image Express Utility 2

- At the initial start, the “License Agreement” window is displayed.

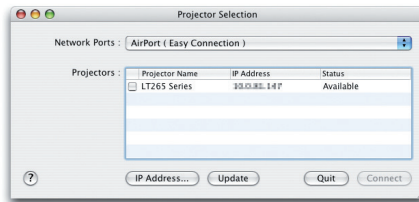
Thoroughly read the agreement shown on the screen, and click “I accept the terms in the license agreement” and the [OK] button.

Next, the “Authenticate” window will be displayed.

- 4 Enter the administrator name and password of your Macintosh computer, and click the [OK] button.

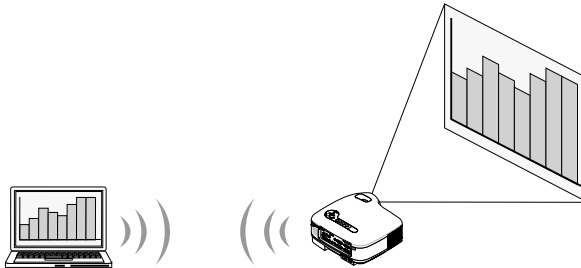


The [Projector Selection] window will be displayed.



- 5 Check the () check box to the left of the projector name to connect and click [Connect].

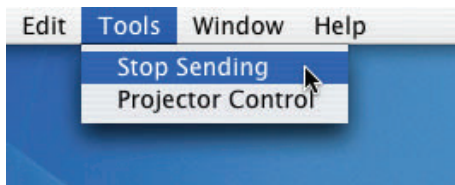
The Macintosh computer and the projector are connected via wireless LAN, and images on the Macintosh screen are projected from the projector.



6-2. Stopping/Restarting Image Transmission

■ Stopping image transmission

- 1 Click [Tools] on the menu bar, and click [Stop Sending].
Image transmission is temporarily stopped.



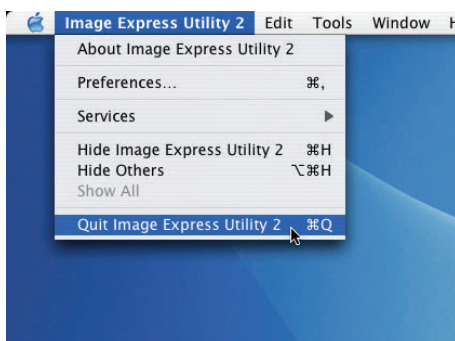
■ Restarting image transmission

- 1 Click [Tools] on the menu bar, and click [Start Sending].
Image transmission is started again.



6-3. Exiting Image Express Utility 2

- 1 Click [Image Express Utility 2] on the menu bar, and click [Quit Image Express Utility 2].
Image Express Utility 2 is exited.



7. Reference: Setting the Connection by Entering IP Address and Other Configurations

7-1. Setting the LAN Settings for the Projector

For how to set IP address, subnet mask, and other configurations without using “Easy Connection”, see “User’s Manual (PDF)” (LT265/LT245/VT800) or “Wired and Wireless Network Setup Guide” (NP3250/NP2250/NP1250/NP3250W/NP3150/NP2150/NP1150/NP3151W/NP905/NP901W/NP2000/NP1000/LT380/LT280/WT615/WT610).

The explanation below is given assuming that the following configurations have been set.

Select a wireless LAN.

IP Address “192.168.100.010”

Subnet Mask “255.255.255.0”

Projector Name “NP2000 Series” (default for NP2000/NP1000)

SSID “NECPJ” (default)


Mode “802.11 Ad Hoc”

WEP “Disable” (default)

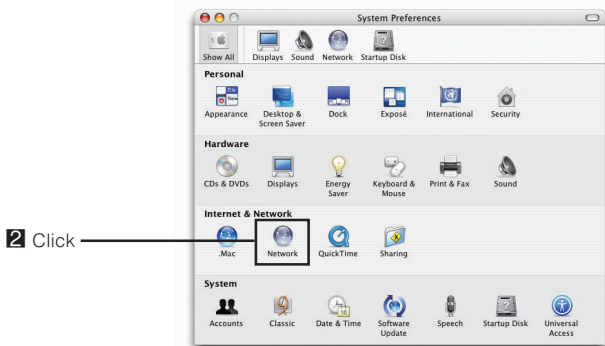
(Note) If [LAN Mode] configuration has been changed, click [Reconnect] on the LAN Mode configuration screen, and press the <OK> button.

7-2. Setting the LAN Settings for Macintosh

To connect to the projector without using “Easy Connection”, set IP address, subnet mask, and other configurations as follows:

1 Click Apple Menu () and [System Preferences...].

The “System Preferences” window will be displayed.



7.Reference: Setting the Connection by Entering IP Address and Other Configurations

2 Click [Network].

The Network configuration window will be displayed.

3 Click [Location]→ “New Location...”, enter a new location name, and click the [OK] button.

4 Select “AirPort” in [Show].

- For wired LAN connection, click “Built-in Ethernet”.
SSID and WEP configurations are unnecessary for wired LAN.

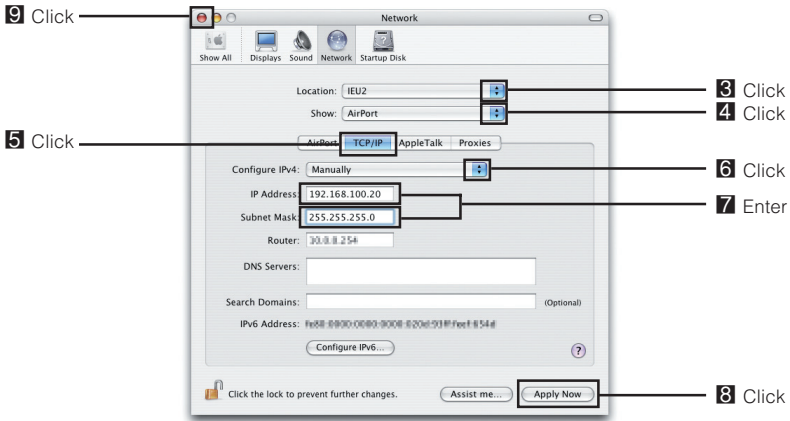
5 Click the [TCP/IP] tab.

6 Select “Manually” in [Configure IPv4].

Entry fields for IP address, subnet mask and other configurations will be displayed.

7 Enter the IP address and subnet mask appropriate for the projector LAN.

As an example, set the IP address “192.168.100.20” and subnet mask “255.255.255.0”.





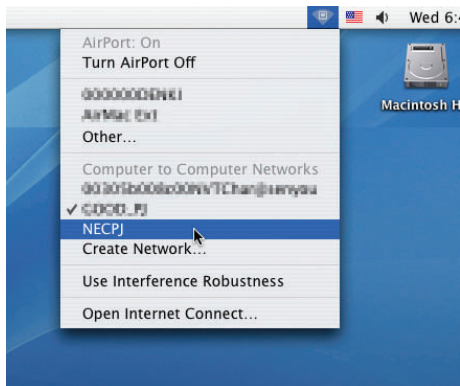
8 Click the [Apply Now] button.

Attempt to connect to the network set in [System Preference ...]→[Network]→[AirPort] tab→[By default, join].

9 Click the [Close] button at the upper left on the Network configuration window.

The Network configuration window will be closed.

- 10** Click the AirPort status ( / ) on the menu bar, and SSID of the projector to connect.
- Click “NECPJ” in this example.



The Macintosh computer is connected to the projector via wireless LAN.

Reference

If WEP has been set in the projector, the [Enter Password] window is displayed. Type the same character string that has been typed for WEP in the projector, and click [OK].

For the following, operate in the same way as “6-1. Connecting to a projector” ( page 11).

About the Downloading Service

For update information on Image Express Utility 2 for Mac OS refer to the NEC Projector's support page (<http://www.nec-display.com/global/index.html>).

For Information

Visit: <http://www.nec-display.com/global/index.html>

NEC