



BlueSoleil™ CE 2.0 Classic

Quick Start

Version 1.3

IVT Corporation

5/F, Fazhan Plaza,
NO. 12, Xinxu Road,
Haidian District,
Beijing, 100085
P.R. China

Tel: +86 10 82898219

Fax: +86 10 62963059

www.ivtcorporation.com

Revision History

Date/YY-MM-DD	Version	Description	Author/Maintainer
2007-11-30	1.0	Create	Lili
2008-7-31	1.1	Review	Lili
2008-8-12	1.2	Add Hands-free calling; Change some screen snapshot; Change Bullets and numbering; Change some grammars.	Lili
2009-5-14	1.3	Add OPP	Xingyang

Contents

1 Introduction	3
2 Features	4
2.1 Connection Management	4
2.2 Device Management	4
2.3 Configuration Management.....	4
2.4 Hands-free Calling.....	5
3 BlueSoleil™ Main User Interface	5
3.1 Turn on Bluetooth	5
3.2 Turn off Bluetooth	6
3.3 Bluetooth Manager	7
3.4 Menu and Tool Bar	9
3.4.1 Tools Menu.....	9
3.4.2 View Menu	12
3.4.3 Help Menu.....	13
4 Configure Bluetooth Device	14
4.1 Configure Local Device Information	14
4.2 Configure the paired devices.....	15
4.3 Configure SPP.....	16
4.4 Configure FTP Server Information.....	16
4.5 Configure DUN Server Information	18
4.6 Configure PAN Service	20
5 Pair with a Device	21
6 Hands-free calling	28
7 Transfer File	35
8 Serial Port Profile	46
9 Object Push Profile	51
10 Dial-up to Internet	54
11 Personal Area Network	63
12 ActiveSync	66
13 A2DP/AVRCP	69
14 My Shortcuts	72
15 FAQ	78

1 Introduction

BlueSoleil™ CE is a Microsoft® Windows® CE based Bluetooth wireless solution provided by IVT Corporation. It is designed according to the latest Bluetooth SIG specifications closely. And the Bluetooth profiles it supports are: A2DP (Audio source), AVRCP (Target device), FTP (Client/Server), SPP, DUN (Client), PAN (User), FAX and Hands-free (HF).

This guide describes how to install and use BlueSoleil™ CE, including:

- ◆ How to start and exit BlueSoleil™ CE.
- ◆ How to navigate the main operation windows of BlueSoleil™ CE.
- ◆ How to use the Menu and Tool Bar.
- ◆ How to configure a Bluetooth device.
- ◆ How to use the Bluetooth profiles.

2 Features

2.1 Connection Management

Connection management includes the following operations:

- ◆ Create New Connection
- ◆ Rename Connection
- ◆ Remove Connection
- ◆ Connect
- ◆ Disconnect

2.2 Device Management

Device refers to a device that provides Bluetooth service(s), for example, Headset, Modem, Notebook, PC, Pocket PC (or PDA) and Handset. Device management includes the following operations:

- ◆ Search Devices
- ◆ Browse Services
- ◆ Search One Type Of Devices
- ◆ Stop Searching Devices

2.3 Configuration Management

Configuration management includes:

- ◆ Local Device Configuration
- ◆ Paired Devices Configuration
- ◆ Service Configuration

2.4 Hands-free Calling

Hands-free calling is identical as the manager of incoming and outgoing call. It includes:

- ◆ Dial out a number
- ◆ Answer or reject an incoming call
- ◆ Call transfer

3 BlueSoleil™ Main User Interface

3.1 Turn on Bluetooth

Step 1: Double click the **BlueSoleil** notify icon in the main shell to start the BlueSoleil™ CE application.



Figure 3.1 BlueSoleil™ Notify Icon

Step 2: If you click the notify icon, a pop-up menu appears as Figure 3.2.

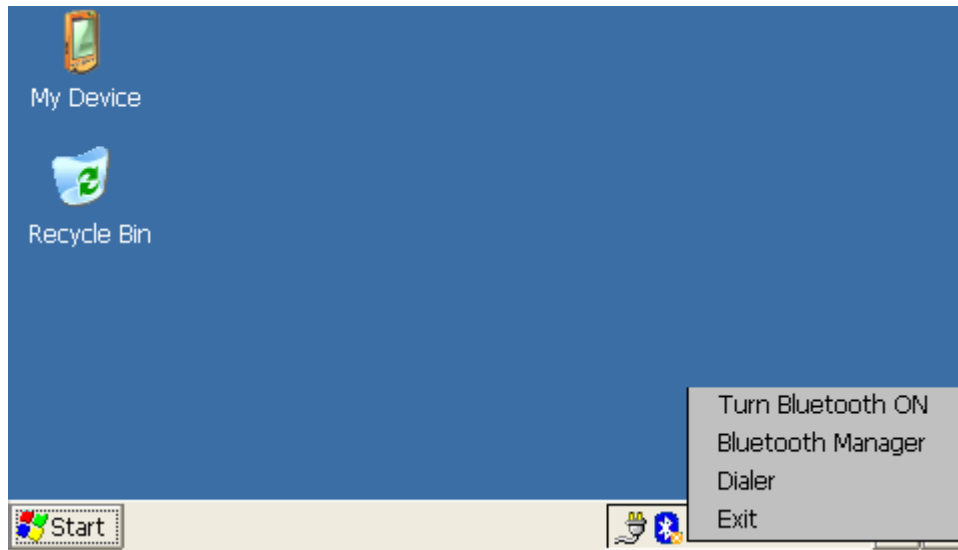


Figure 3.2 Notify Menu

The following menu options are available:

- ◆ **Turn Bluetooth On**
 - Turn on the Bluetooth but the application is running on the foreground of the system.
- ◆ **Bluetooth Manager**
 - Turn on Bluetooth and starts up Bluetooth Manager.
- ◆ **Dialer**
 - Turn on Bluetooth and starts up Dialer.
- ◆ **Exit**
 - Quit BlueSoleil™ CE.

3.2 Turn off Bluetooth

Step 1: If you click the notify icon, a pop-up menu appears as Figure 3.3.

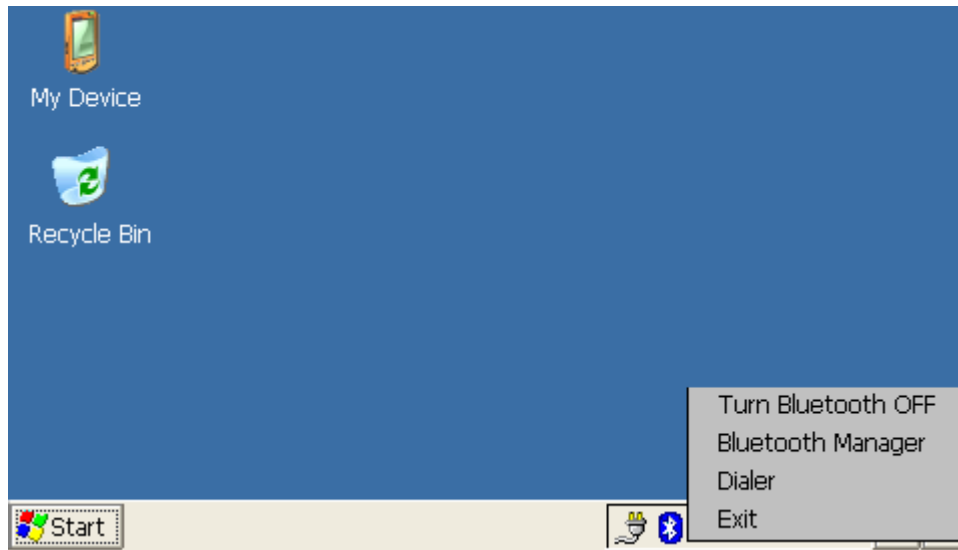


Figure 3.3 Notify Menu

The following menu options are available:

- ◆ **Turn Bluetooth Off**
 - Turn off the Bluetooth but the application is still running on the background of the system.
- ◆ **Bluetooth Manager**
 - Starts up Bluetooth Manager
- ◆ **Dialer**
 - Starts up Dialer
- ◆ **Exit**
 - Quit BlueSoleil™ CE.

3.3 Bluetooth Manager

Click **“Bluetooth Manager”** in Figure 3.3 to enter the main window of BlueSoleil™ CE. Here lists all available Bluetooth services provided.

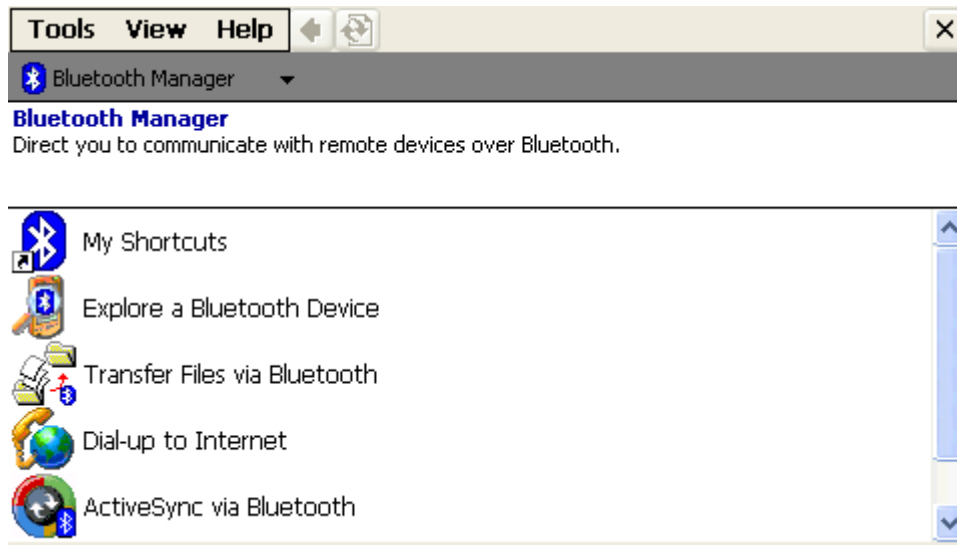


Figure 3.4 Bluetooth Manager Main Window

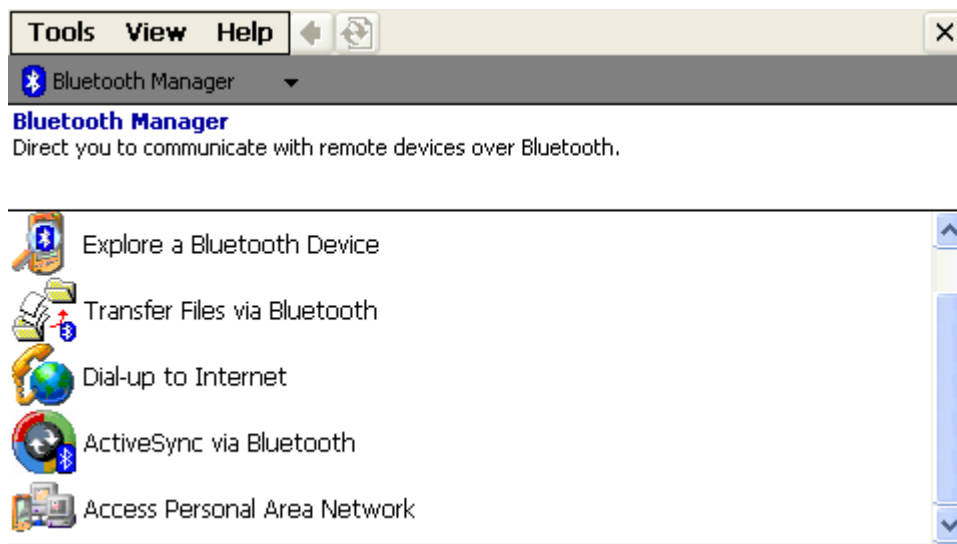


Figure 3.5 Bluetooth Manager Main Window

◆ **Bluetooth Manager**

- This is the main window of BlueSoleil™ CE. It provides elementary information of Bluetooth-equipped devices and the services it provides and direct you to communicate with the remote devices via Bluetooth wireless technology.

◆ **My shortcuts**

- If the connection has been established successfully before, a shortcut of the service will create and you can

◆ **Explore a Bluetooth Device**

- Search Bluetooth-equipped device within 10 meters nearby.

3.4 Menu and Tool Bar

There are three items on the Menu and Tool Bar of BlueSoleil™ CE.

3.4.1 Tools Menu

The **Tools** menu includes the following items:

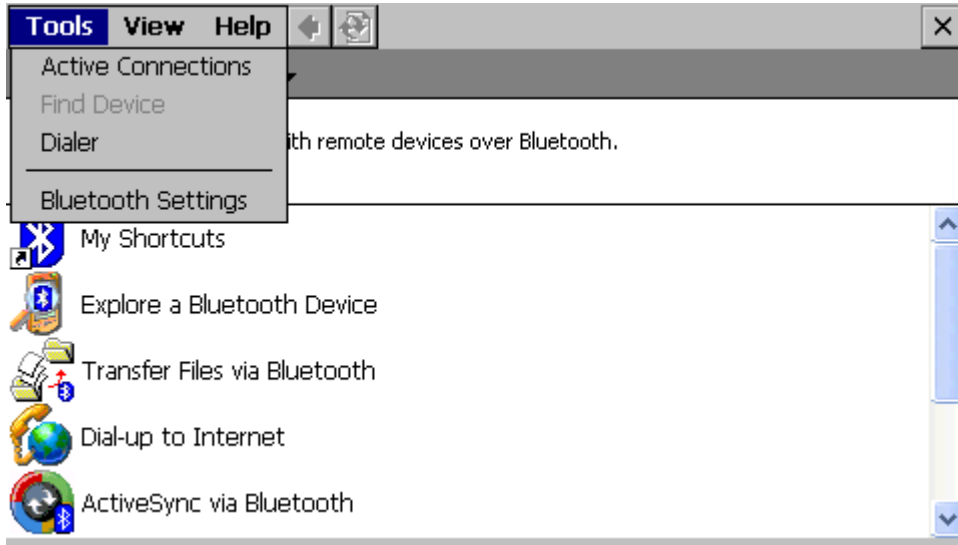


Figure 3.6 Tools Menu

◆ **Active Connection**

- Manage the active connection from local device to the remote devices. The connection initiated by the local device will list in the Outgoing connections.

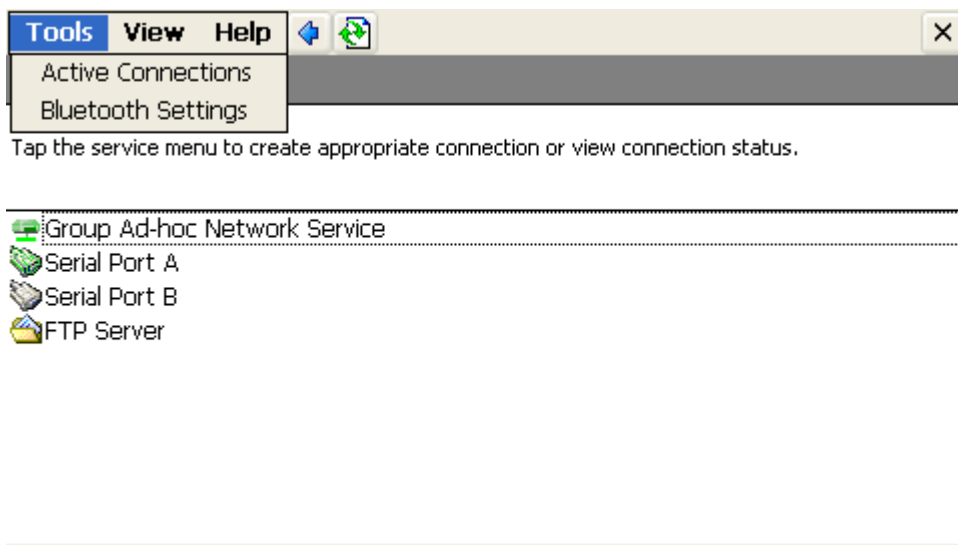


Figure 3.7 Active Connection

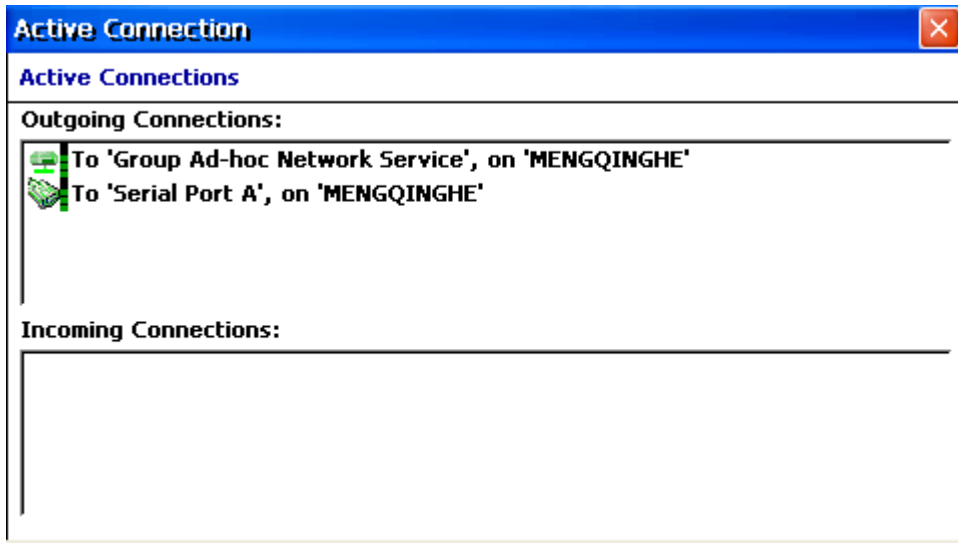


Figure 3.8 Active connection

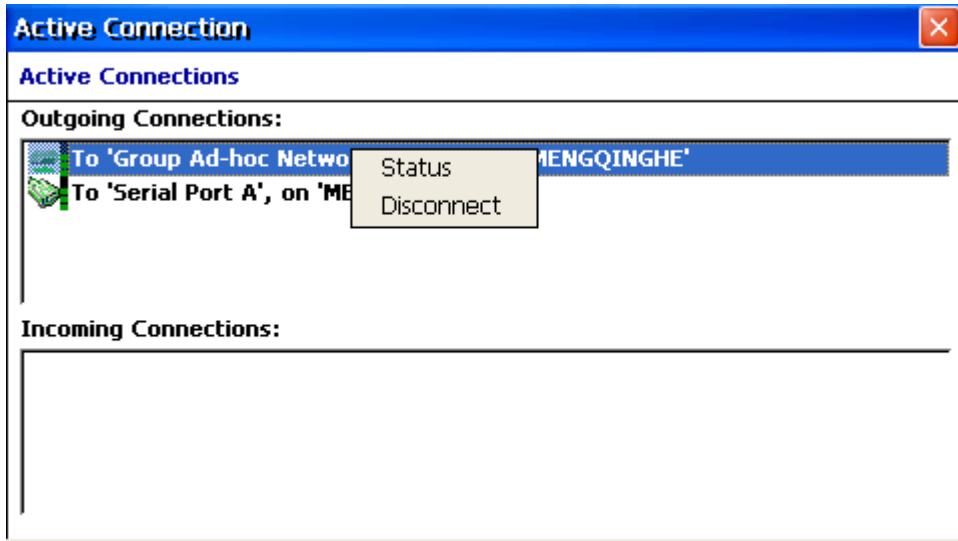


Figure 3.9 Check active connection's status

If remote device is the starter, the connection will list in the Incoming connections.

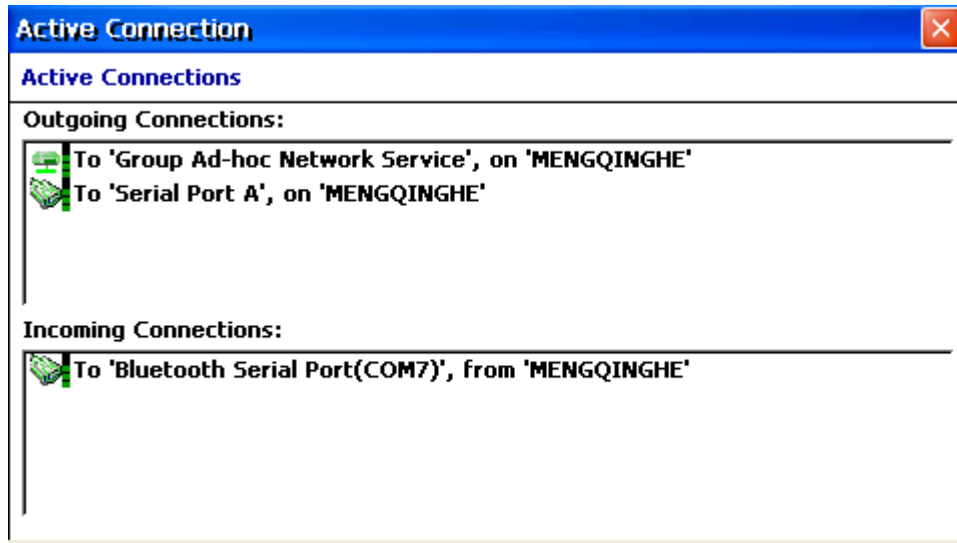


Figure 3.10 Incoming connection

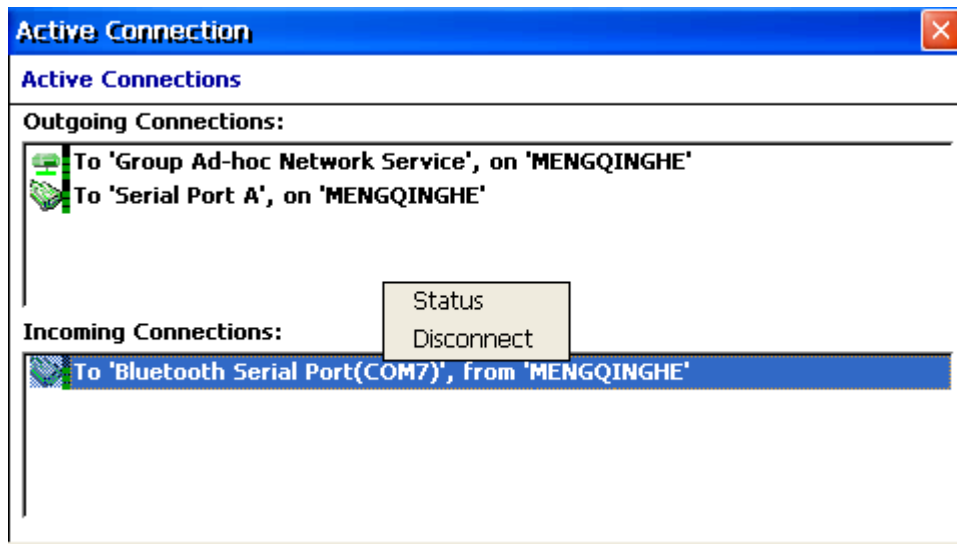


Figure 3.11 Check active connection's status

◆ **Bluetooth Settings**

- Configure the services property. More information, please refer 4 Configure Bluetooth device.



Figure 3.12 General setting

3.4.2View Menu

The **View** menu contains two items:

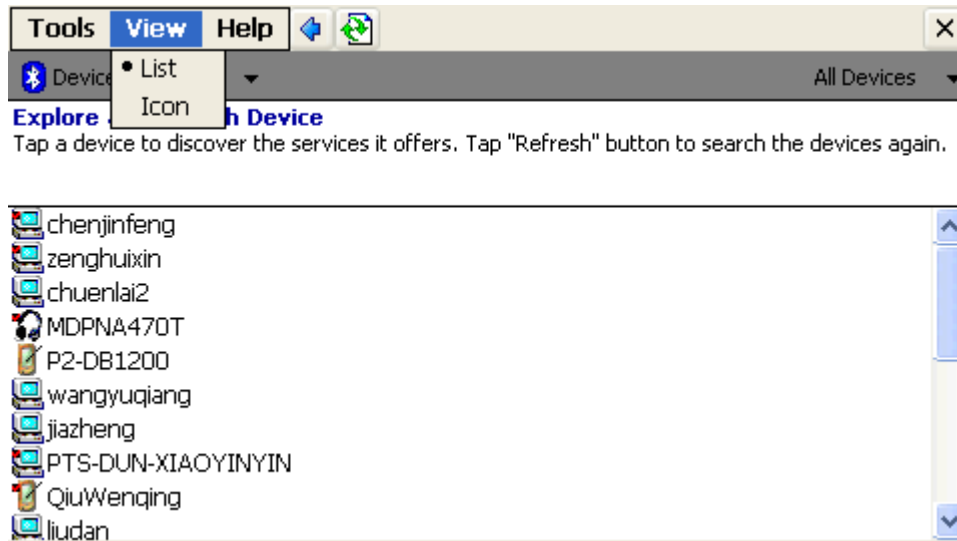


Figure 3.13 View Menu

◆ **Icons**

- Switch to Icon view.



Figure 3.14 Icon view

3.4.3 Help Menu

The **Help** menu contains two items:

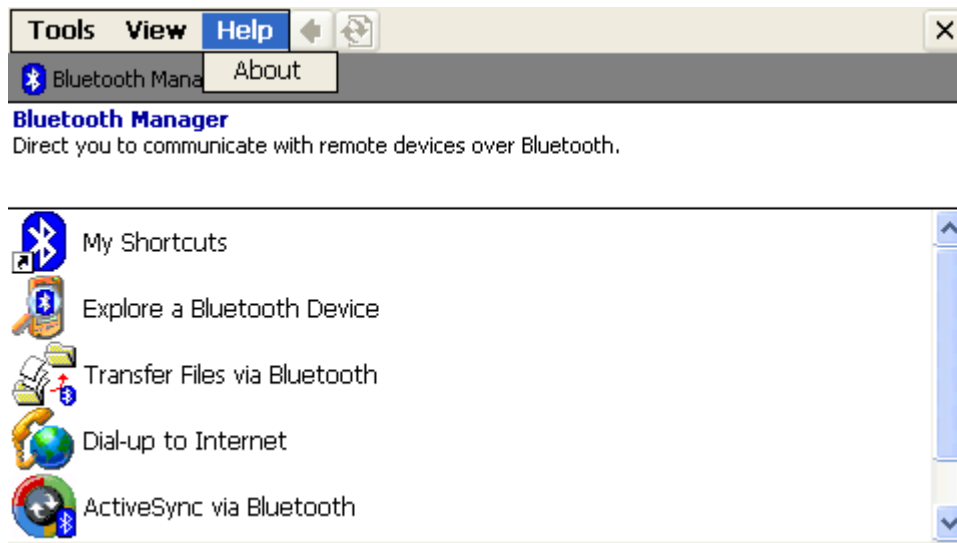


Figure 3.15 Help Menu

◆ **About**

- View software version.

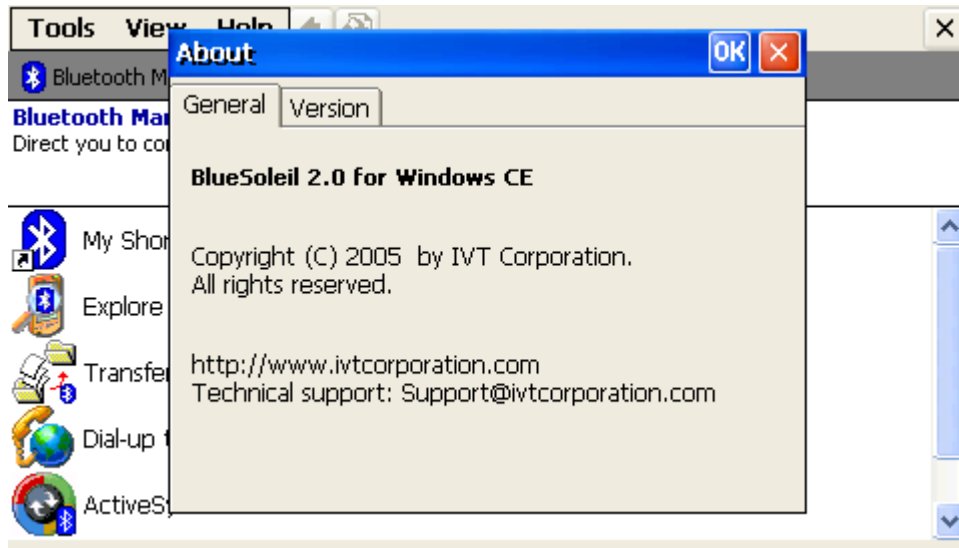


Figure 3.16 About

4 Configure Bluetooth Device

4.1 Configure Local Device Information

Click **“Bluetooth settings”** on the **Tools** menu. In the popup **Options** dialog, click **“General”** in Figure 4.1. The device name is fixed and can not be changed with others. Bluetooth Address and Bluetooth chip manufacturer also available for information.



Figure 4.1 Local Device Configuration

In the **Configure Local Device**, the following operations are available, click **OK** in the upper-right of **“Bluetooth settings”** window to save change:

- ◆ Set the Bluetooth device name.
- ◆ Set whether allow other devices to discover my device or not.
- ◆ Set whether allow other devices to connect my device or not.

4.2 Configure the paired devices

Click **“Bluetooth settings”** on the **Tools** menu. In the popup **Options** dialog click **“Paired Device”** in Figure 4.2.

It lists all devices paired before. Pair means there is a link key has been changed between two devices nearby. For security sake, only the paired devices have the privilege to exchange data. After pair is done, the data sent by Bluetooth link channel will be encrypted and be received by paired device to protect the attack form MIM. Remove a paired device by the **Remove Device** button.

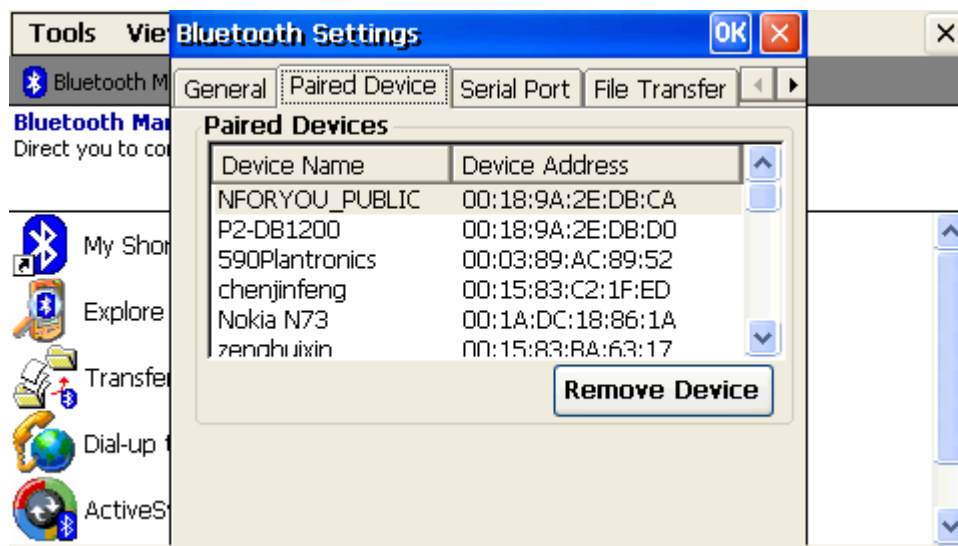


Figure 4.2 Paired Devices Configuration

4.3 Configure SPP

You can view the default COM port and select the available one.

The security level is also provided for your change.

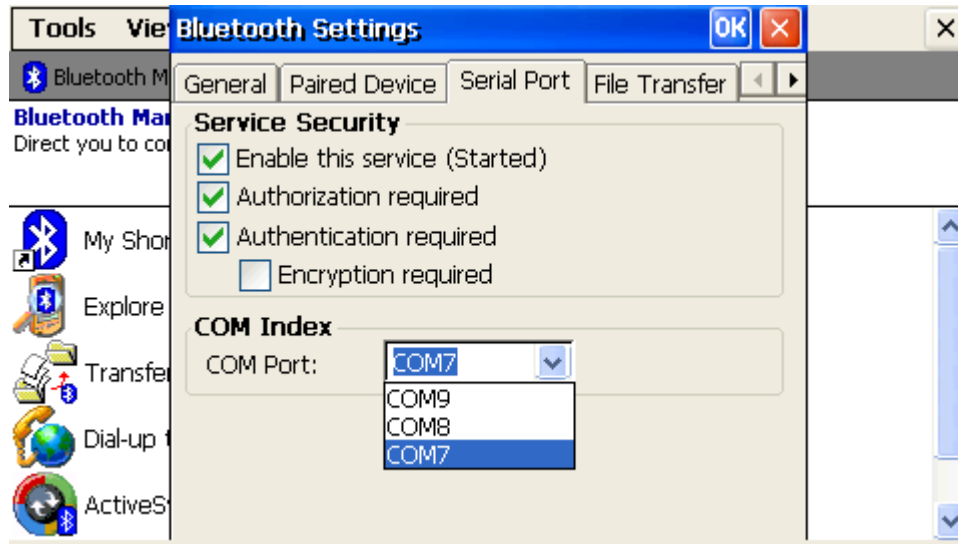


Figure 4.3 SPP Configuration

- Enable this service: enable security check when Bluesoleil is started..
- Authorization Required: control the access rights of different service. A user-response dialog box will remind user of the desired service provided locally being access by other devices at the beginning of accessing action every time. Accept the request from remote device or deny is both supported.
- Authentication Required: check if the device initiates connect request is the trusted device. If the initiator is first time hand up the accessing request, local device will start the pairing request and ask user to input passkey to create a link key between these devices. Save this link key to make these devices become trusted each other.
- Encryption Required: To decide whether the data stream between the two connected device should be encrypted or not. Switch to encrypted mode before accessing to the service desired.

4.4 Configure FTP Server Information


Click **“Bluetooth settings”** on the **Tools** menu. In the popup **Options** dialog click **“File Transfer”** tab (Figure 4.4).



Figure 4.4 FTP Service Shared Folder Configuration

In the **File Transfer**, the following operations are available, click **OK** in the upper-right of **“Bluetooth settings”** window to save change:

- ◆ **Set service security. (Refer to [4.3 Configure SPP](#))**
 - Enable this service (Started)
 - Authorization required
 - Authentication required
 - Encryption required

- ◆ **Set the local FTP Server shared folder.**
 - Click the  button in Figure 4.3. In the popup **Select Directory** dialog, click **Select** button to select a folder in Figure 4.4.

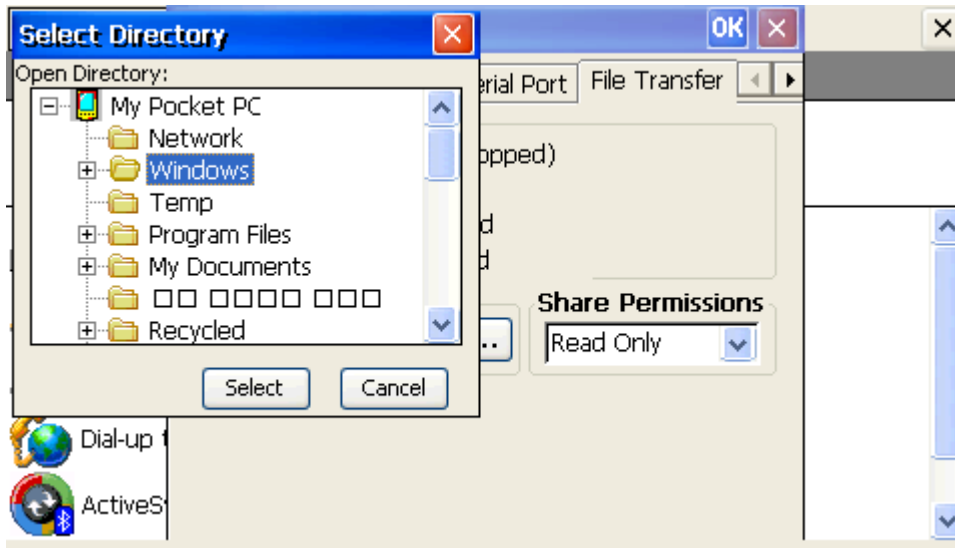


Figure 4.5 FTP Service Shared Folder Configuration

- ◆ **Set the local FTP Server share permissions** (Figure 4.5).
 - Read & Write: Remote client has both read and write permission of the shared folder
 - Read Only: Remote client only has read permission of the shared folder



Figure 4.6 FTP Service Shared Folder Permission Configuration

4.5 Configure DUN Server Information

Click **“Bluetooth settings”** on the Tools menu. In the popup **Options** dialog click **“Dial-up Networking”** tab (Figure 4.7).



Figure 4.7 DUN Service Configuration

In the **DUN**, the following operations are available, click **OK** in the upper-right of “**Bluetooth settings**” window to save changes. Please remember the current setting before change parameters. Recover the setting if fail to dial-up network.

- ◆ Set service security.
- ◆ Set COM Port.

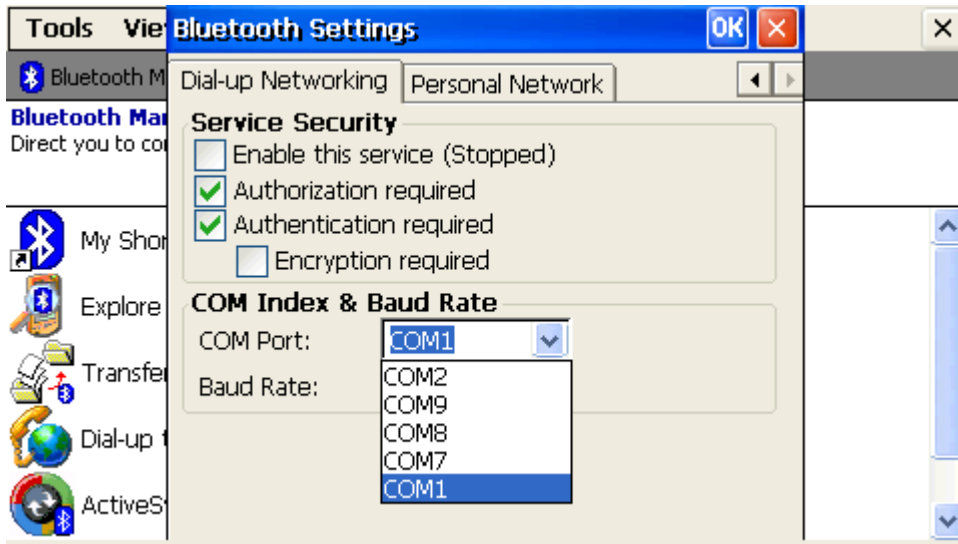


Figure 4.8 Set COM Port

- ◆ Set Baud Rate.

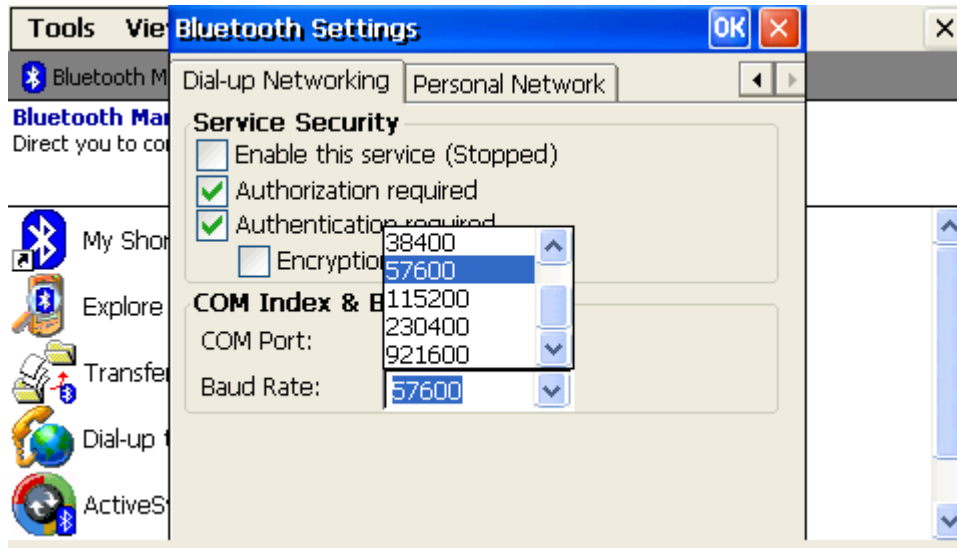


Figure 4.9 Set Baud Rate

4.6 Configure PAN Service

Click **“Bluetooth settings”** on the Tools menu. In the popup Options dialog click **“Personal Network”** tab (Figure 4.10).




Figure 4.10 PAN Configuration

In the **Personal Network**, the following operations are available:

- ◆ Set Service Security

5 Pair with a Device

Step 1: Tap  Explore a Bluetooth Device to explore Bluetooth-equipped device nearby automatically.

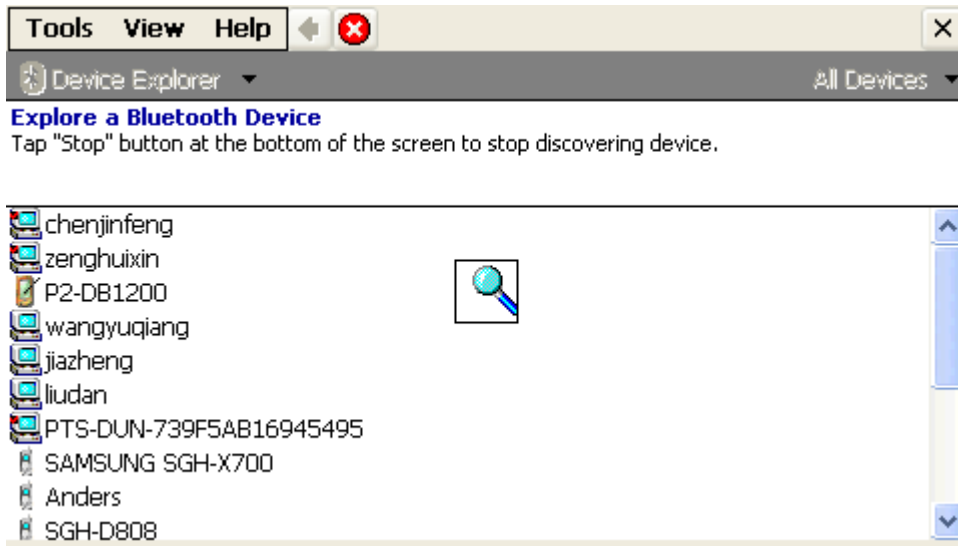



Figure 5.1 Explore Bluetooth devices

◆ Tap  to stop searching.

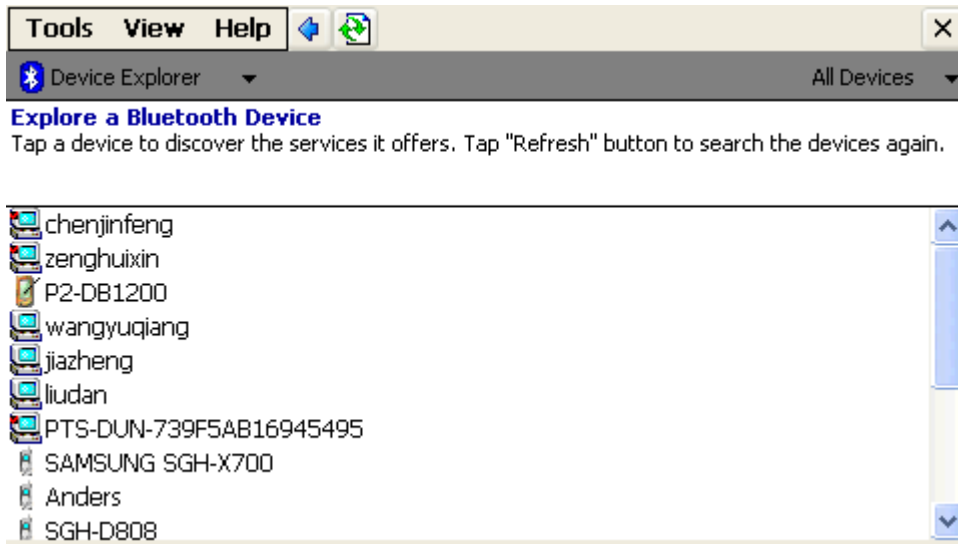


Figure 5.2 Explore Bluetooth devices finish

◆ Tap  to go back to previous window.

◆ Tap  to refresh.

- ◆ To list devices by its type.

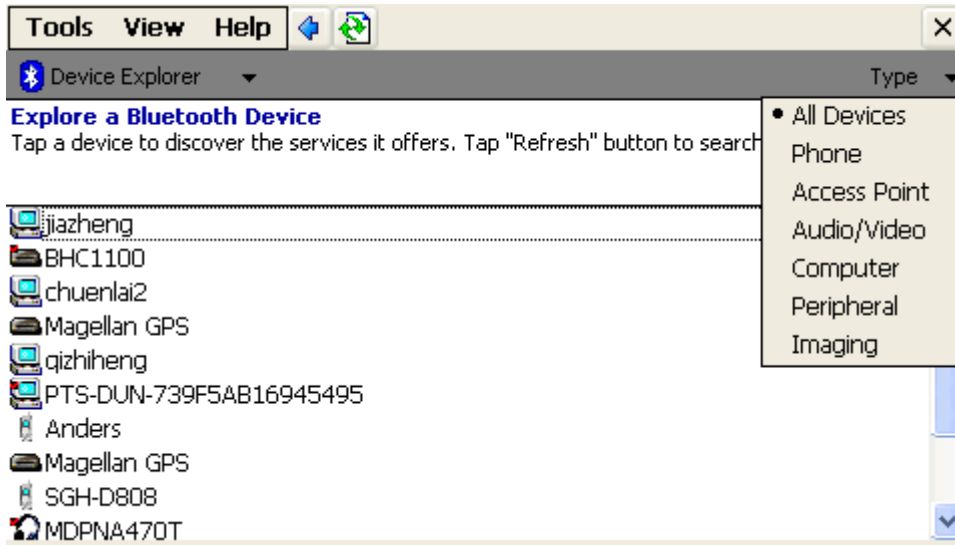


Figure 5.3 Class devices

- By phone type

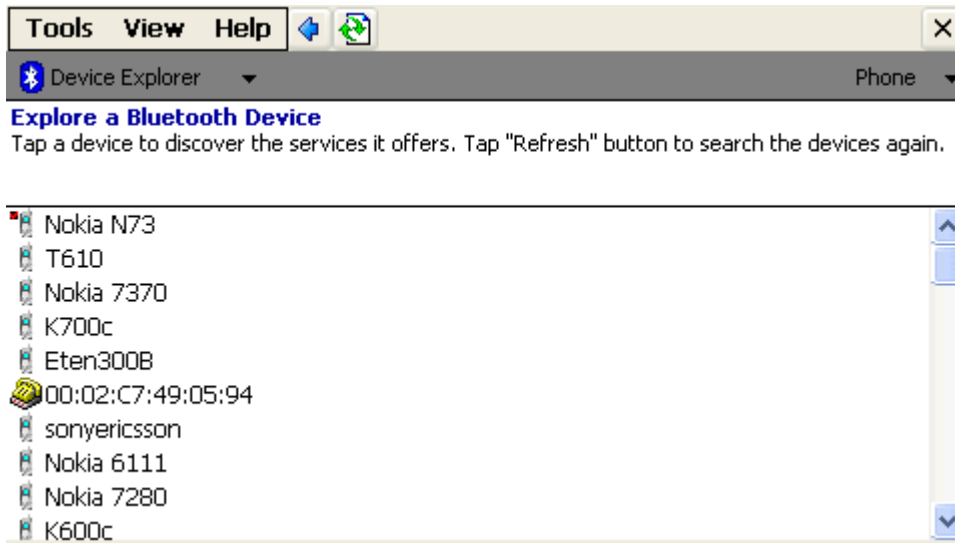


Figure 5.4 Class devices by phone type

- By computer type

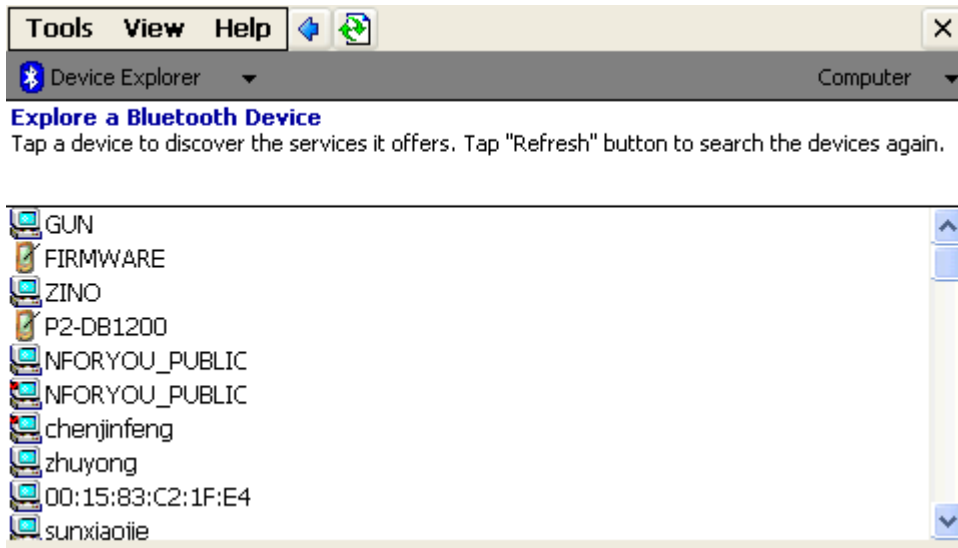


Figure 5.5 Class devices by computer type

Step 2: Select a device. If it has not been paired before, select "Pair Device" to pair with it.

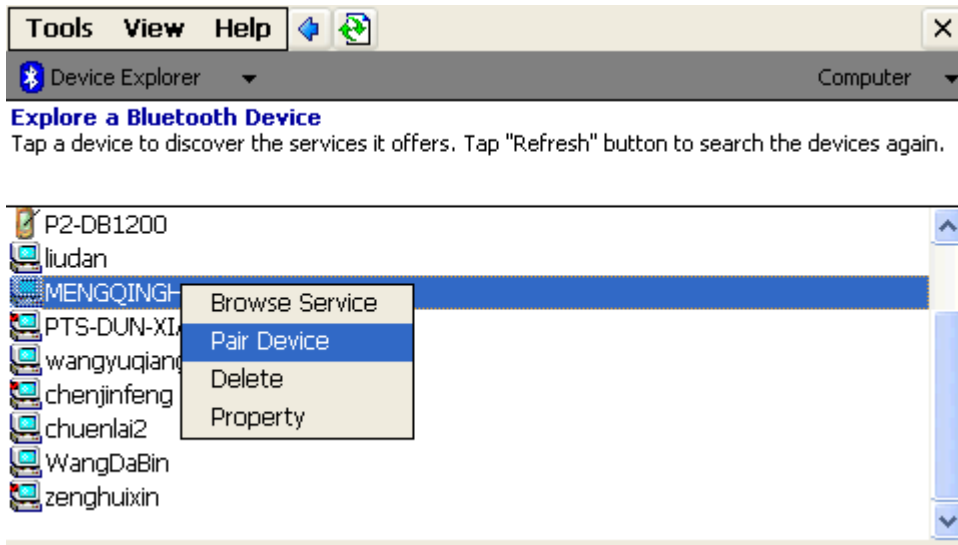


Figure 5.6 To Pair with a selected device

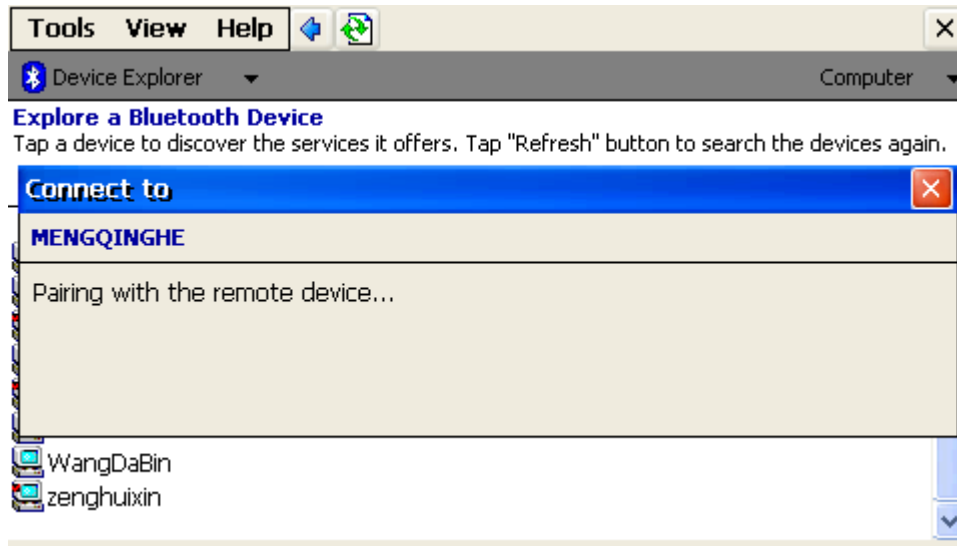


Figure 5.7 Pairing

- To distinguish the pair/unpaired device by if it has the red pair symbol in device representation icon.

If you have already known the Bluetooth address of your desired device, you can use the speedup key 'Find device' in Tools menu. Bluetooth address is the ID of Bluetooth equipped device.

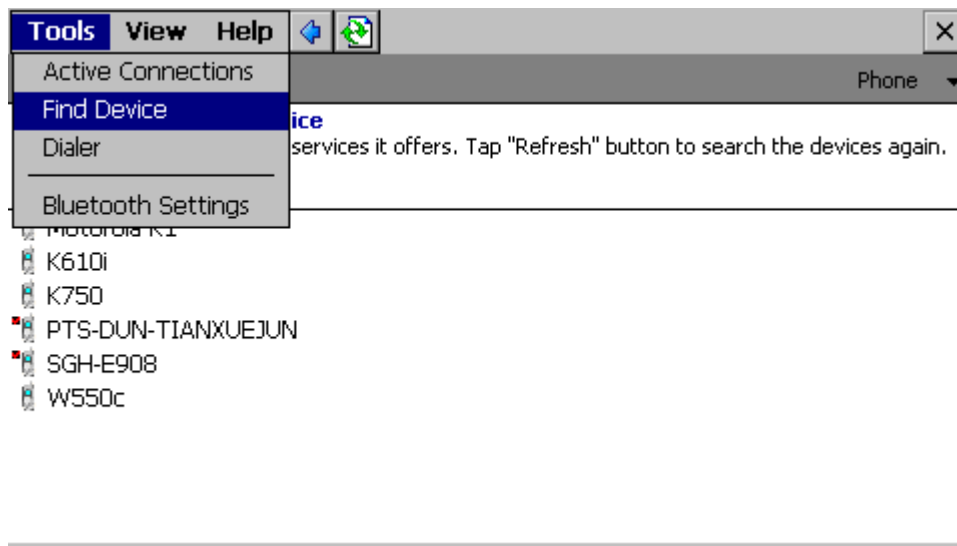


Figure 5.8 Find device

Input the Bluetooth address of the device you have desire to find. The format should be XX:XX:XX:XX:XX:XX. (X: Number or capital letter)

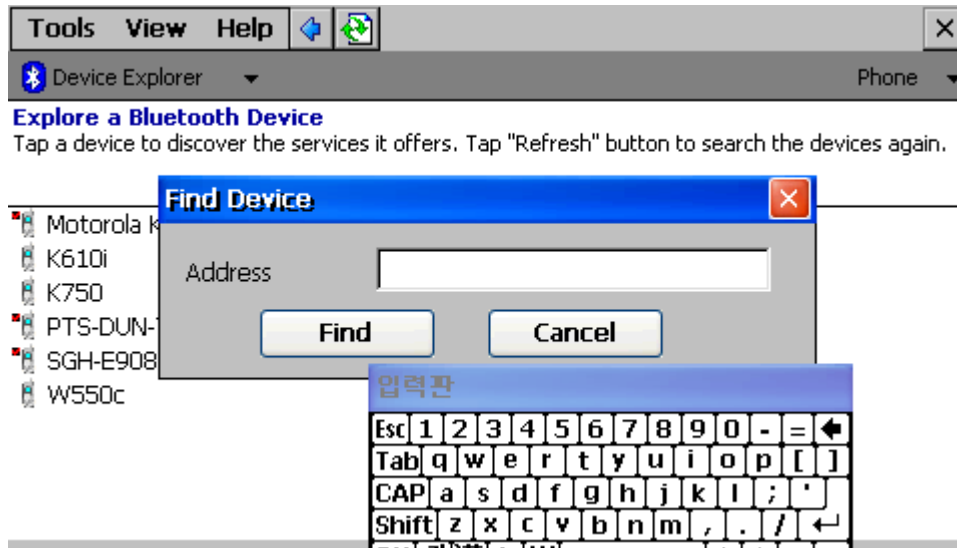


Figure 5.9 Find device

You can know Bluetooth address of your remote device by view its property and security level for service of this device also can be set here.

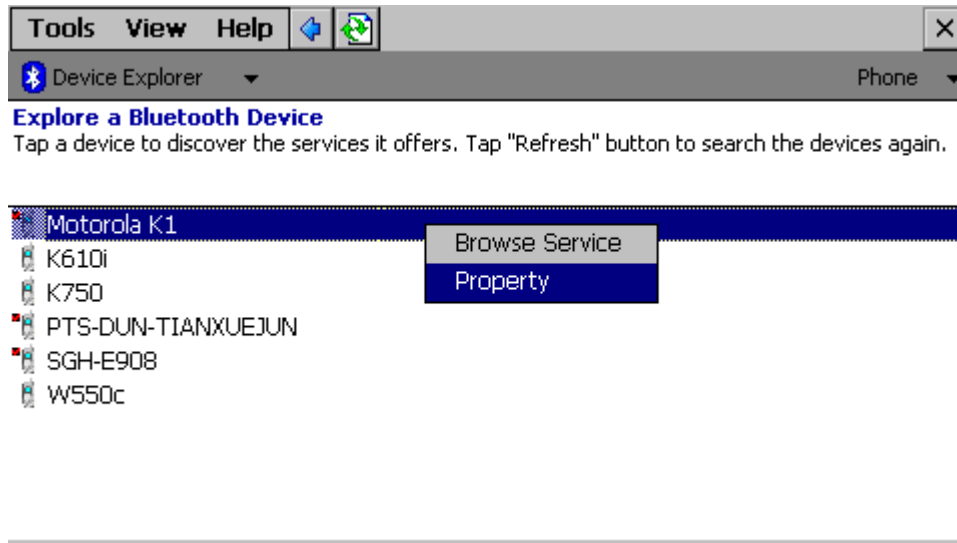


Figure 5.10 Property of the remote device



Figure 5.11 Property of the remote device

Step 3: Input the characters used as the passkey which is used to create link key.

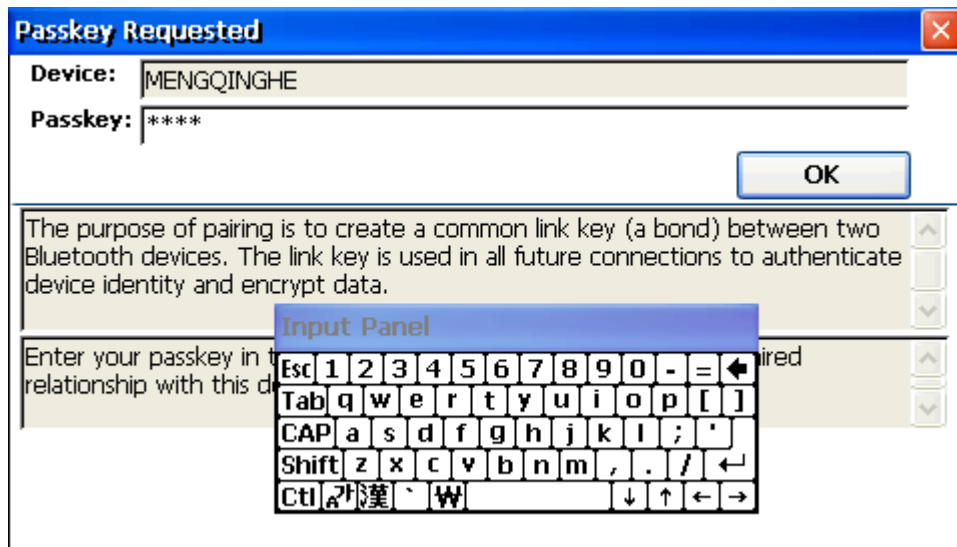


Figure 5.12 Input passkeys

Step 4: Input the same alphanumeric characters input in Step 3 to the request window in the device which paired.

If the pairing operation is successful, the paired device will be marked with a red pair symbol as below:

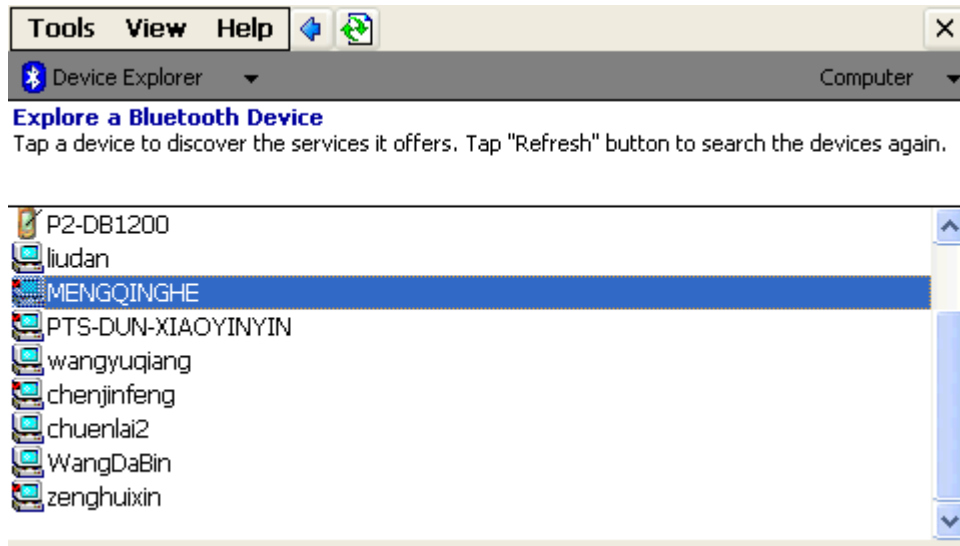


Figure 5.13 Pair successfully

If the pairing operation is failed, an error message box will pop up as below:

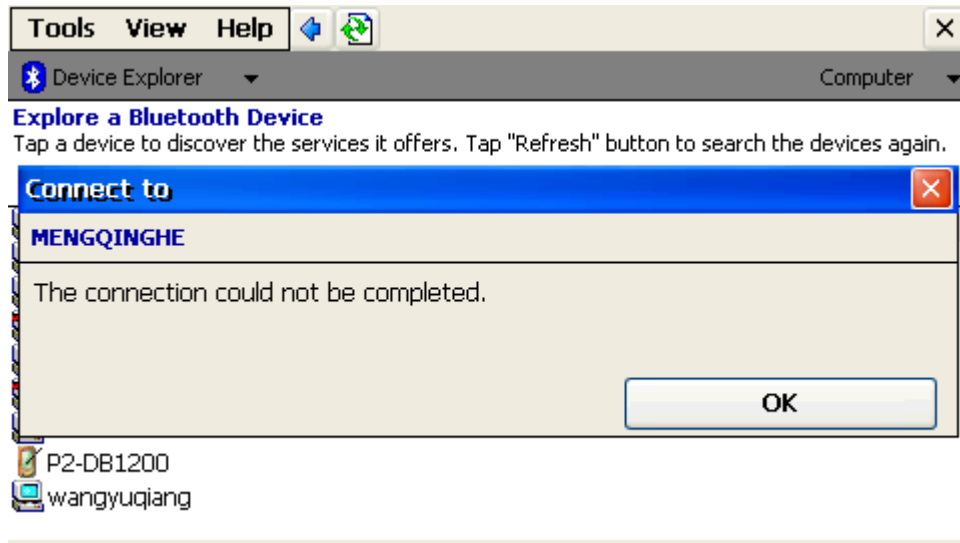


Figure 5.14 Pair fails

Note:

- In the remote devices list, if the device which you want to establish connection is not shown in the remote devices' list, please check that whether the device is power on, or if the distance between your device and remote device is less than 10 meters and the Bluetooth program is running on the device, then refresh the devices' list again.
- If the device still is not shown in the device list, please check that whether the device connect to other devices. If the connection with other device(s) exists, first disconnect the current connection, and then search devices nearby again.

- If the device's name is "Unknown", please check that whether the device connect to other devices. If the connection with other device(s) exists, first disconnect the connections with other device(s), and then search devices nearby again. Occasionally, you cannot get the remote device's name though you have done searching for the device many times, you can ignore it.

Step 5: Explore the services of the paired device.



Figure 5.15 Explore the services

6 Hands-free calling

BlueSoleil™ CE can act as Hands-free unit. Hands-free calling is for the scenarios that dial an outgoing call or answer an incoming call. The UI of this part has not been completely finished, but work flow for calling operation has already carried out. Three-way calling does not support currently, but this function has been scheduled in calendar.


Step 1: Tap  Explore a Bluetooth Device in Bluetooth Manager to search the Bluetooth enabled mobile phones in the limited range automatically.



Figure 6.1 Search devices

Filter Bluetooth mobile phone out.

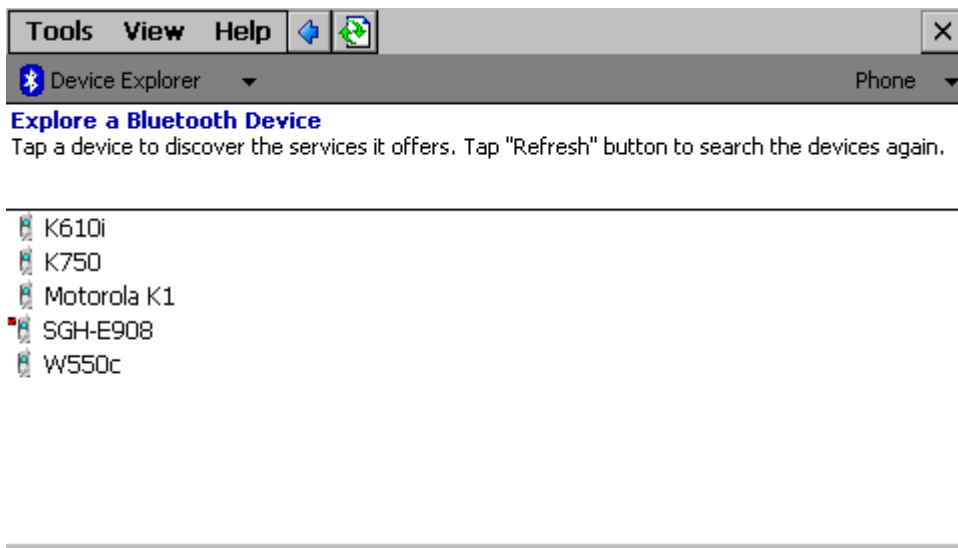


Figure 6.2 Bluetooth mobile phone

Step 2: Pair with a device. (See the section [5 Pair with a Device](#))



Figure 6.3 Pair

Step 3: Connect to the Hands-free service provided by mobile phone.

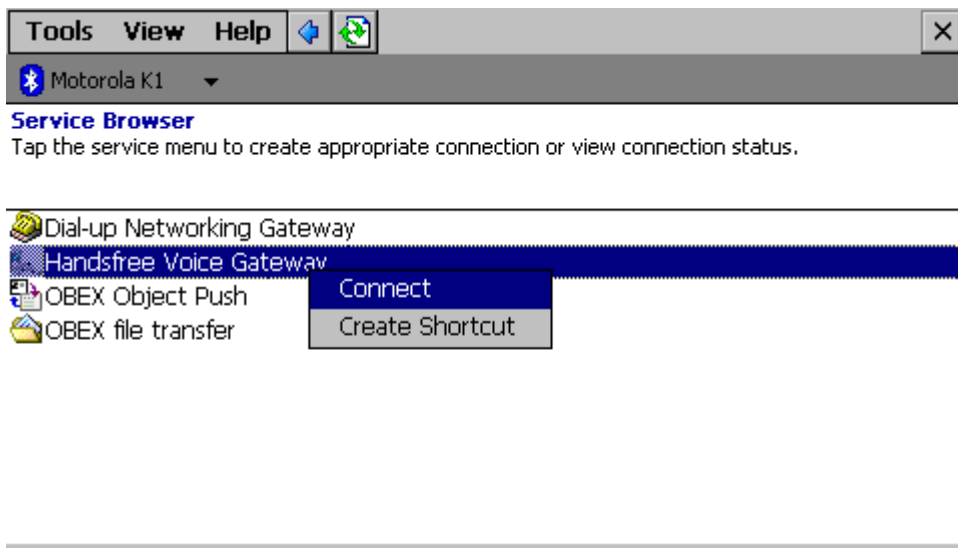


Figure 6.4 Connect to Hands-free voice calling

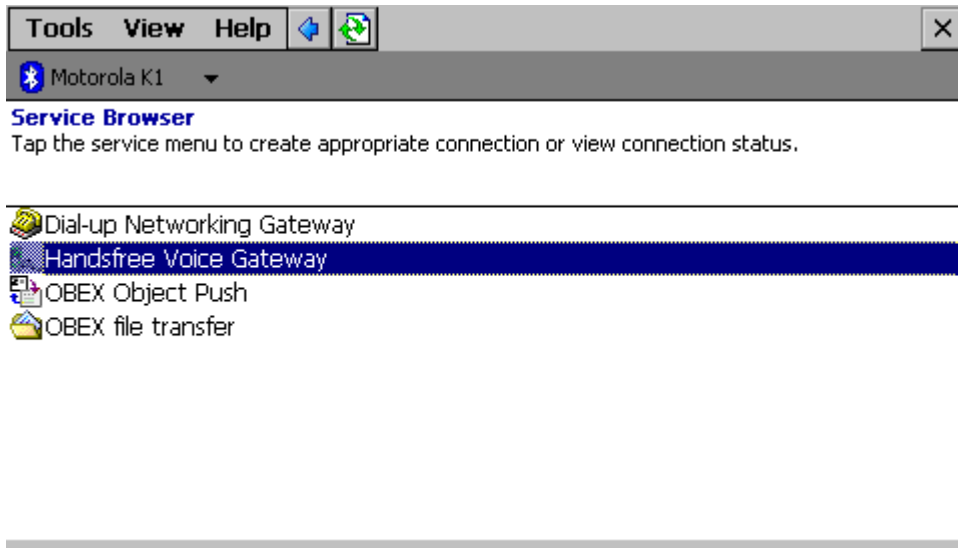


Figure 6.5 Connected

Step 4: Start up Dialer. There are two ways to start up Dialer. One is by select 'Dialer' in tools menu or directly launch Dialer in the notify menu.

Step 5: Dial out a number.

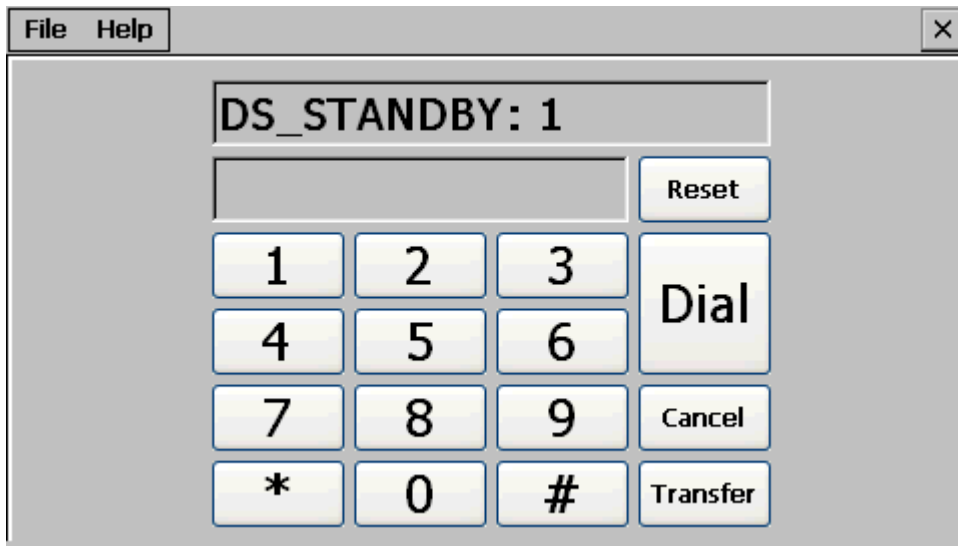



Figure 6.6 Dialer keypad

◆ **Keypad**

-  dial out a number or answer the incoming call




-  clear all input
-  cancel the last input or reject the incoming call
-  transfer calling between local device and Bluetooth mobile phone



Figure 6.7 Dialing a number

Step 6: Answer or reject an incoming call.



Figure 6.8 Have an incoming call

- Tap 'Dial' to answer it.



Figure 6.9 Answer this incoming call

- Tap 'Cancel' to answer it.



Figure 6.10 Reject this incoming call

Step 7: An incoming or outgoing call is ongoing.



Figure 6.11 A call is ongoing

- Tap 'Cancel' to hang up it.



Figure 6.12 Hang up the ongoing call

- Tap 'Transfer' to transfer the call to mobile phone or transfer the call back. SCO released means the call has been transferred to mobile phone; SCO established means the call is transferred back successfully to local device.



Figure 6.13 Transfer call to mobile phone

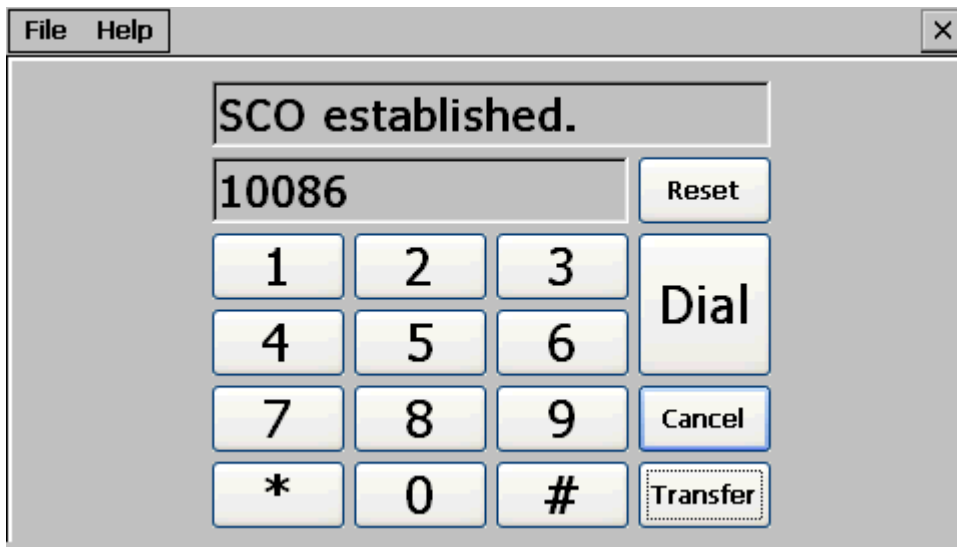



Figure 6.14 Transfer back to local device

7 Transfer File

BlueSoleil™ CE can act as both the FTP client and the FTP server. The FTP (File Transfer Profile) is used to transfer file from remote device to local or from local to remote device.

Step 1: Tap  Transfer Files via Bluetooth in Bluetooth Manager to search the Bluetooth enabled devices which support FTP service in the limited range automatically.

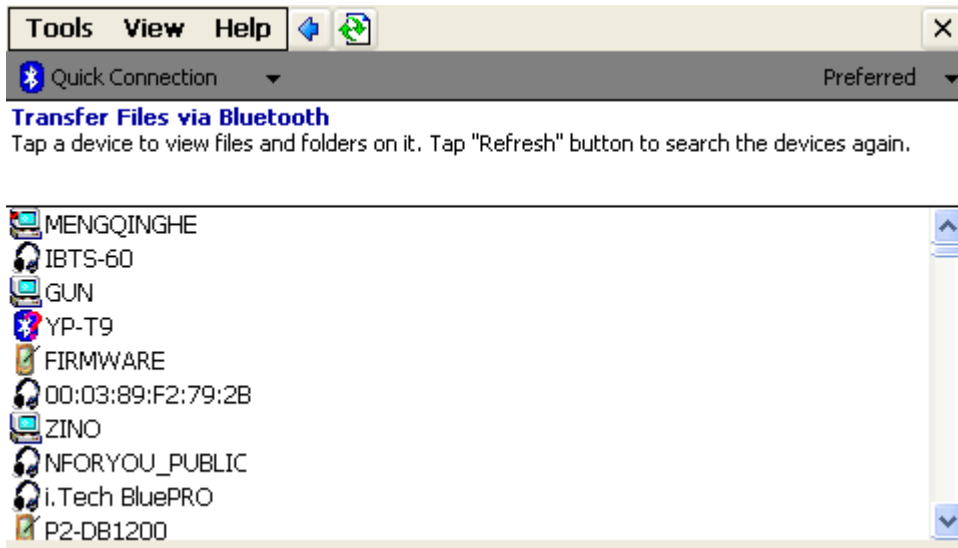


Figure 7.1 Preferred devices

Step 2: Pair with a device. (See the section [5 Pair with a Device](#))

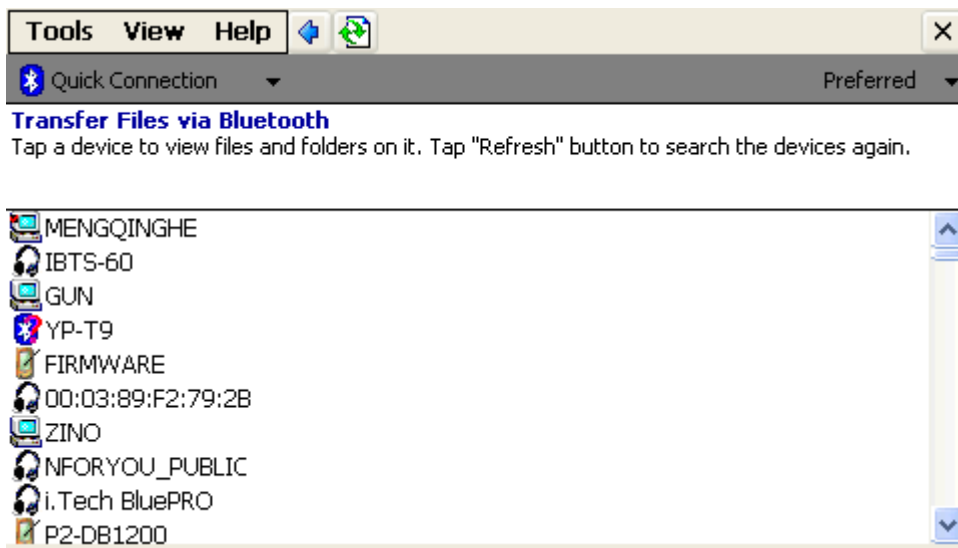


Figure 6.15 Pair

After finish the pairing action, the function is listed in the pop-up menu.

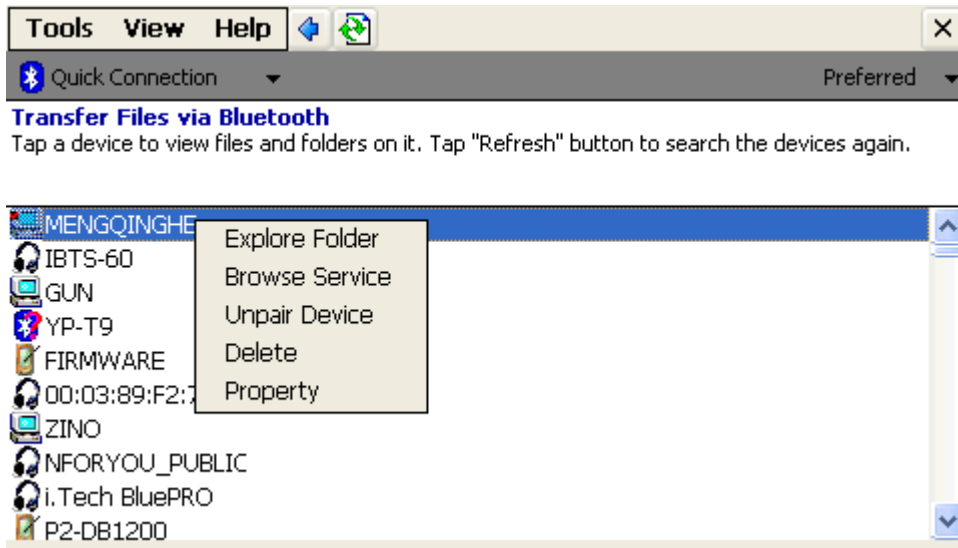


Figure 6.16

Figure Function

- Explore Folder: View the remote and local device file list.
- Browse Service: List the services which the selected device can provide.
- Unpair Device: Make the remote device and local device unpaired.
- Delete: Delete the device from the current device list.
- Property: View the elementary information of the selected device.

Step 3: Select "Explore Folder" to list the remote device file list. You may need to confirm the local device to access to the remote device in the remote device side.

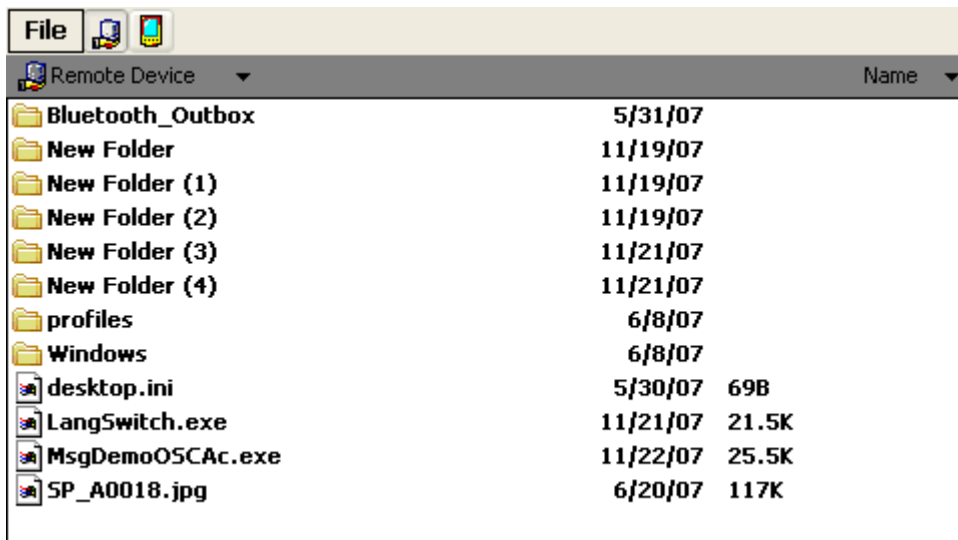


Figure 6.17

Remote Device File List

- Tap change to local device file list.

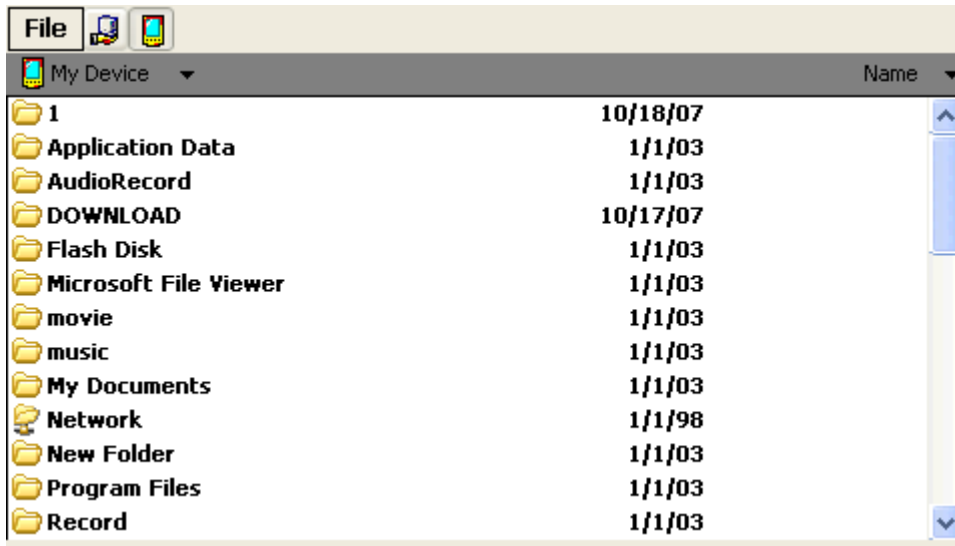


Figure 6.18 local Device File List

- Exit.

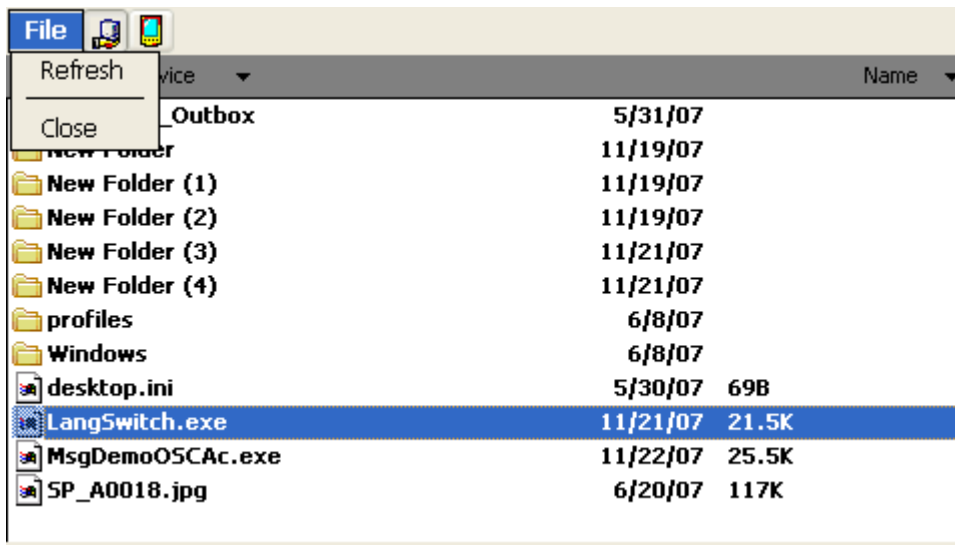


Figure 6.19 Menu

- Sort files.

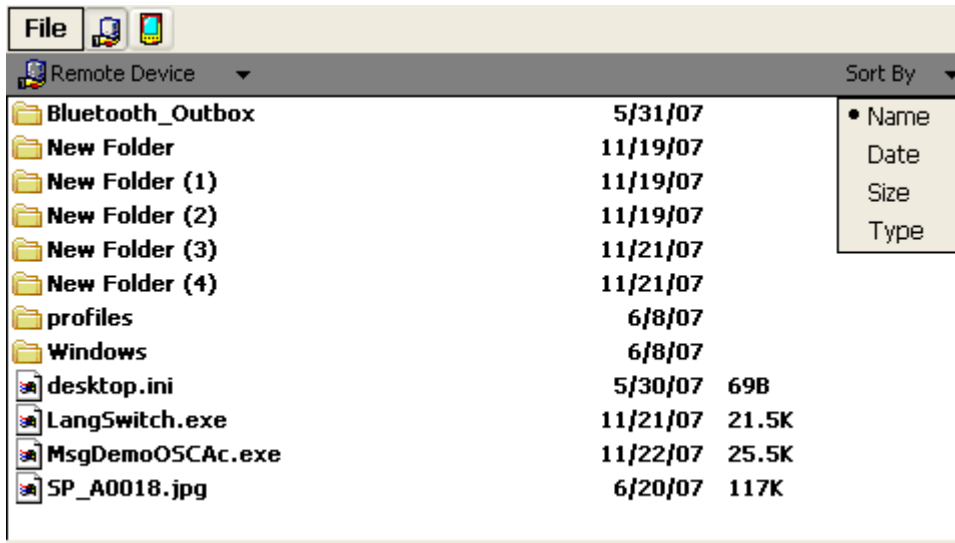


Figure 6.20 Sorting

Step 4: Refresh the current file list from menu or tap shortly in the blank area.

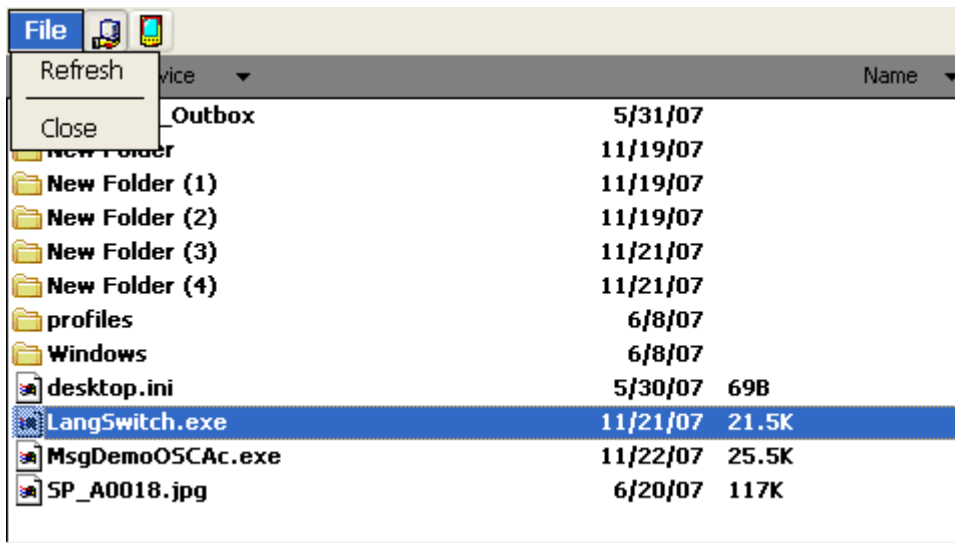


Figure 6.21 Refresh

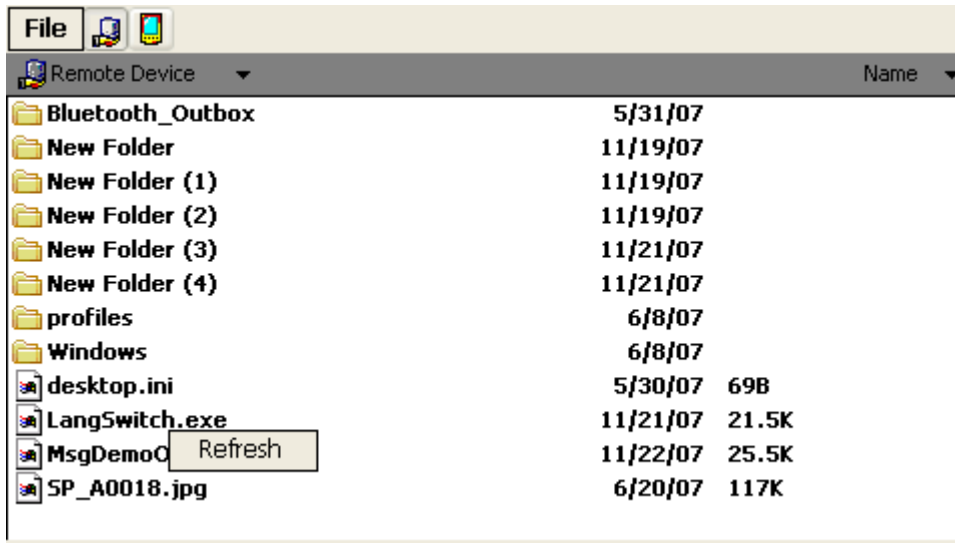


Figure 6.22

Refresh

Step 5: Download the selected file from the remote device to local device.

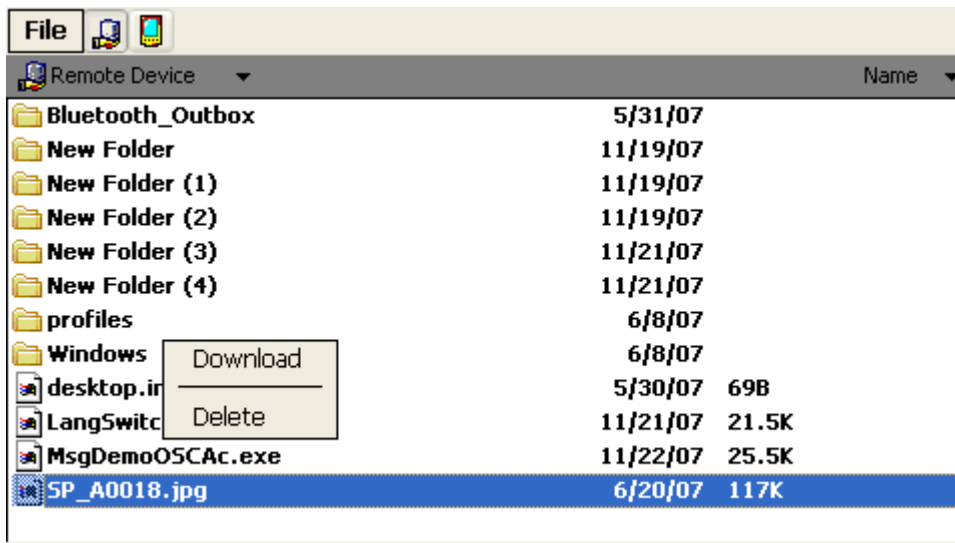


Figure 6.23

Download a file

- You can download a folder.

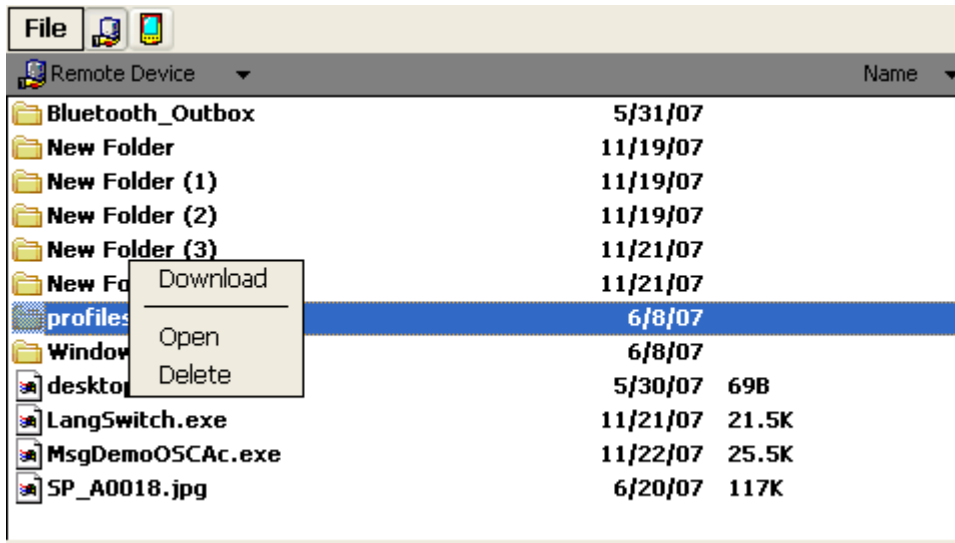


Figure 6.24

Download a folder

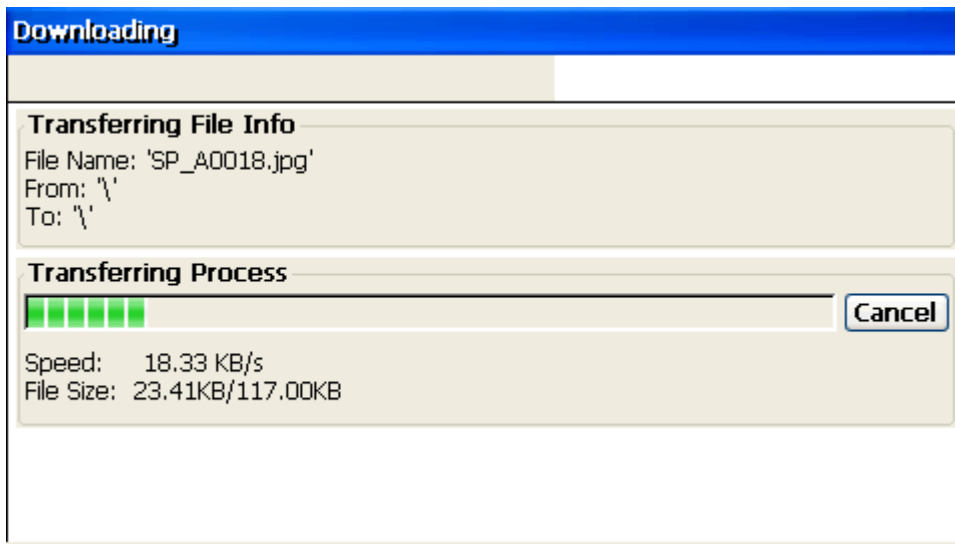


Figure 6.25

Downloading

- If there is a file or folder already exists, a warning message box will show up. Select "Yes" to replace the old one, select "No" to cancel downloading.

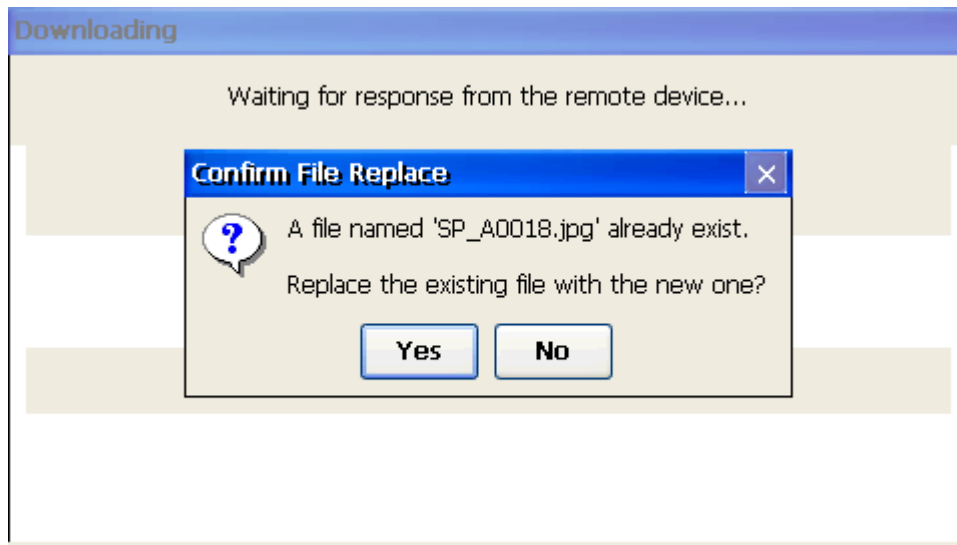


Figure 6.26

File exists

Step 6: Tap to display local file list.



Figure 6.27

Local file list

Step 7: Upload the selected file from the local device to remote device.

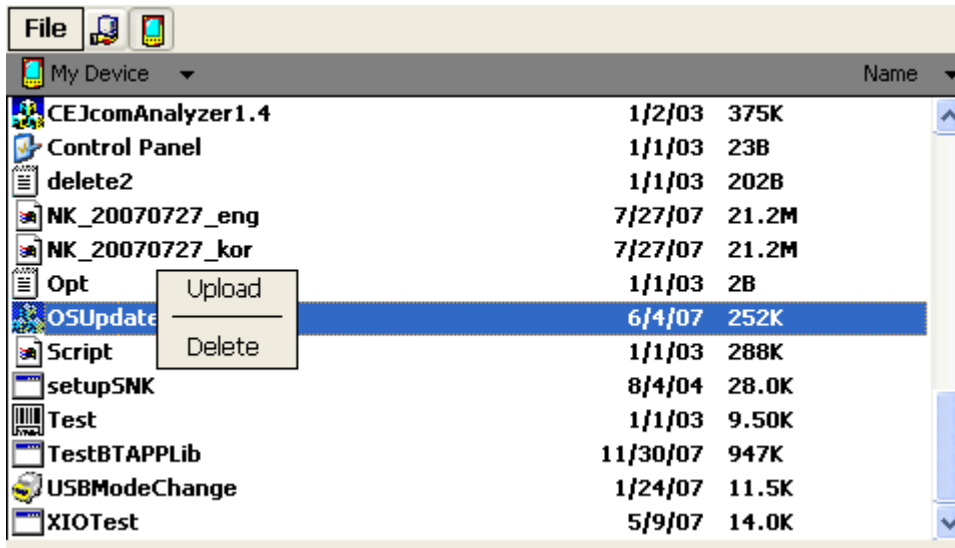


Figure 6.28

Upload a file

- You can download a folder.

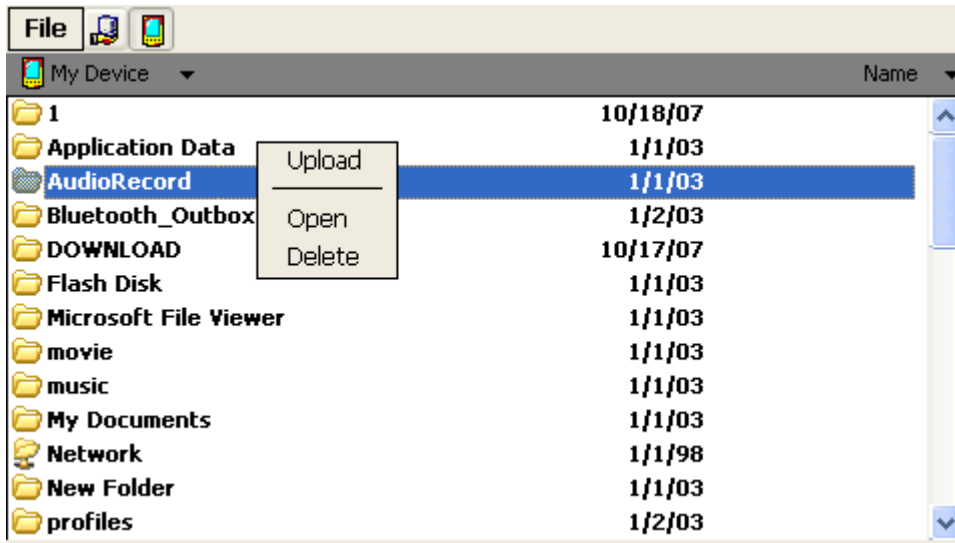


Figure 6.29

Upload a folder

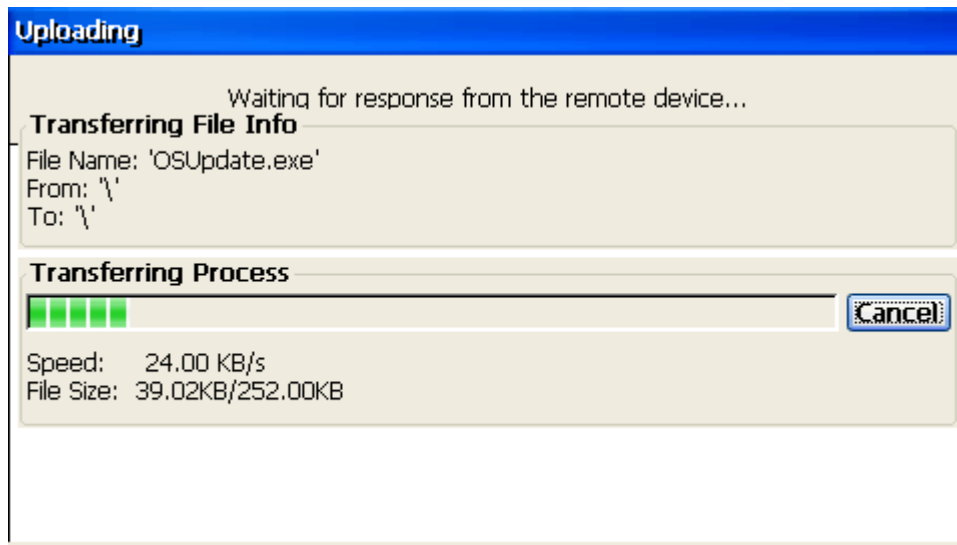


Figure 6.30

Uploading

- If there is a file or folder already exists, a warning message box will show up. Select "Yes" to replace the old one, select "No" to cancel downloading.

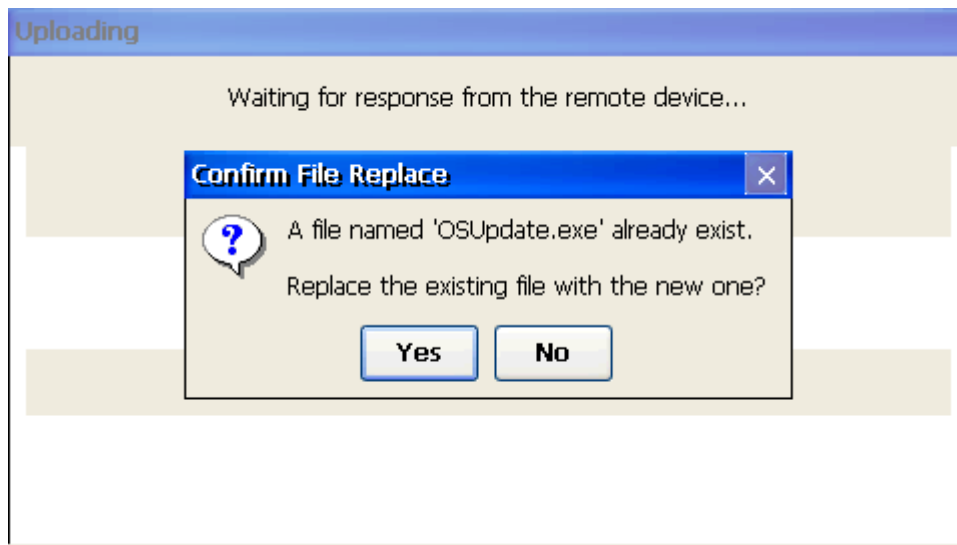


Figure 6.31

File exists

Step 10: Property: View the elementary information of the selected device Disconnect FTP connection



Figure 6.32 General information

- Authorization setting. If selecting one of or all items in the service list. No need to confirm the access action when access to the remote device. The remote device will acquiescently deem the local device can safely establish the connection based on the service respectively without any authorization.



Figure 6.33 Authorization

8 Serial Port Profile

BlueSoleil™ CE can act as both the SPP DevA/DevB. User may not use this kind connection directly, and it's just used by other application to send or received data via simulate COM port.

Step 1: Pair with a device. (See the section [5 Pair with a Device](#))

Step 2: Explore the serial port service that the selected device provides and then connect it.

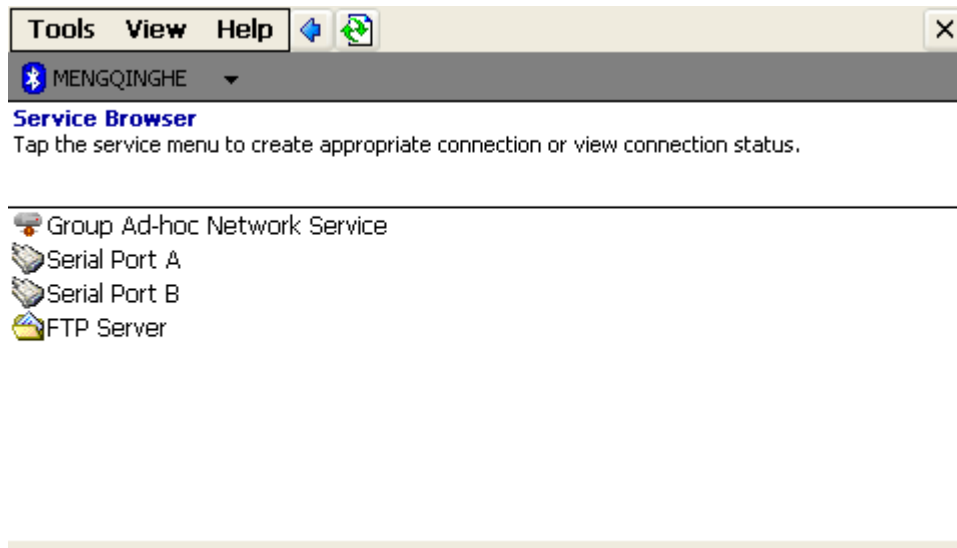


Figure 8.1 View the services

Step 3: Select an available serial COM port and select "connect" to create the SPP connection.

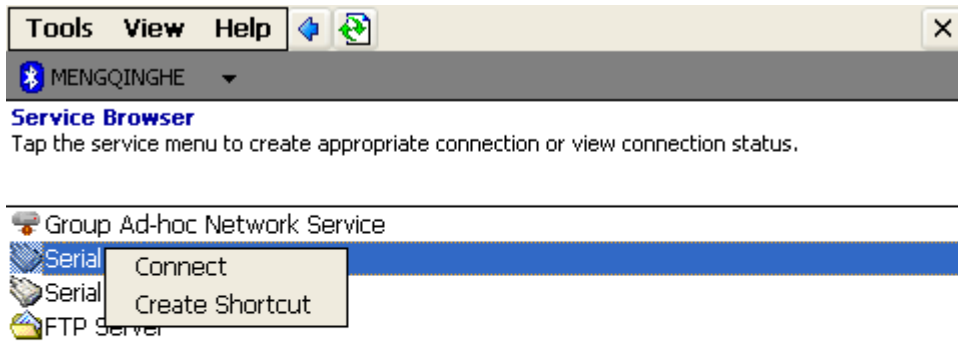


Figure 8.2 Create SPP connection

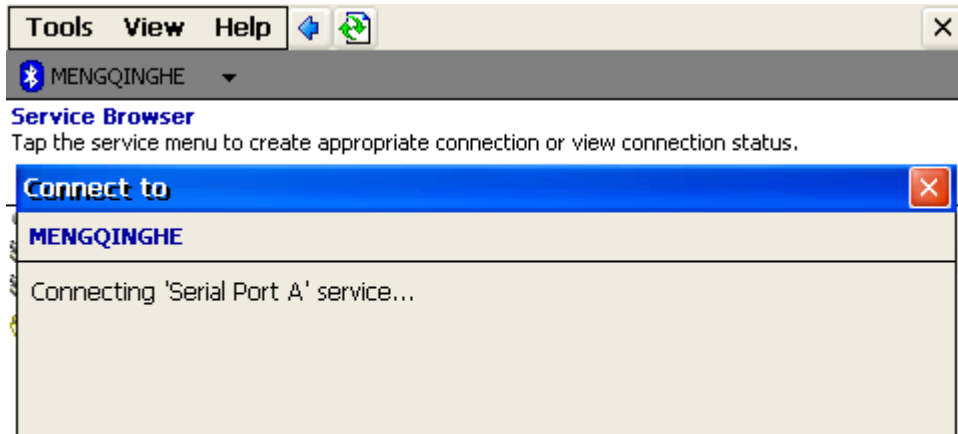


Figure 8.3 Connecting

Step 4: The icon turn to green means the connect action is successfully done.

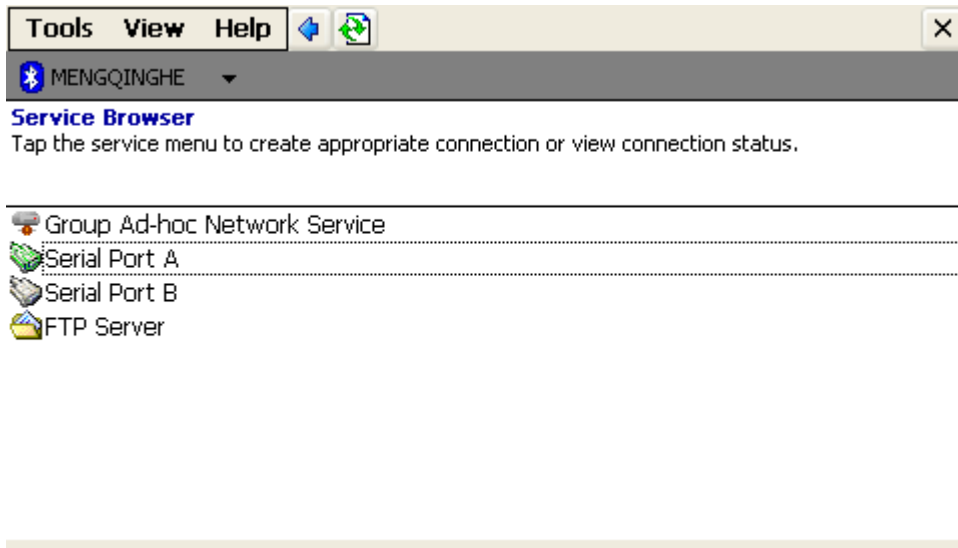


Figure 8.4 Connecting

- You can view the status of the activity connection.

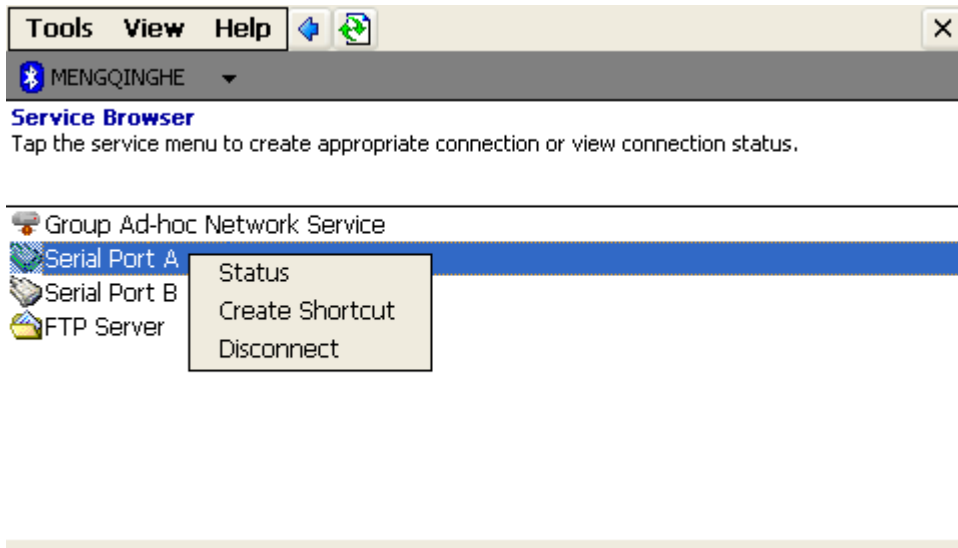


Figure 8.5 Function

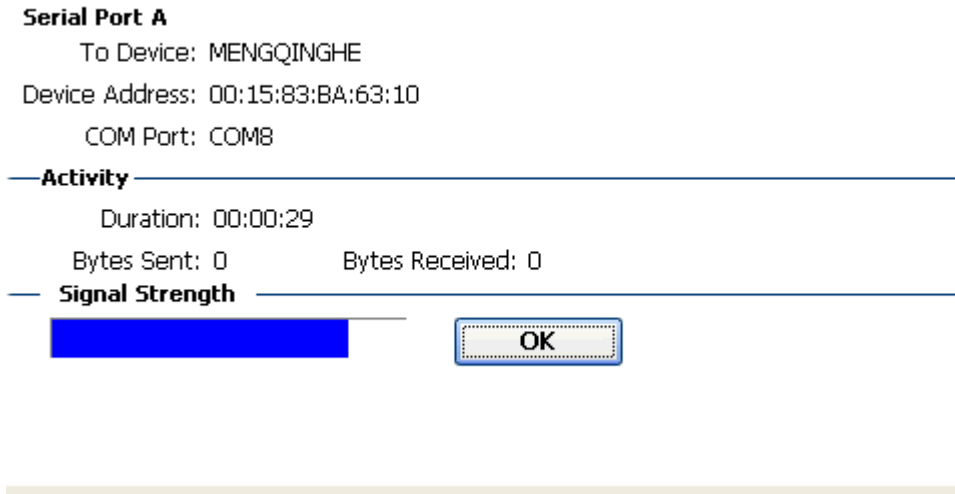


Figure 8.6 Connection status

Step 5: More than one connection can co-currently exists.

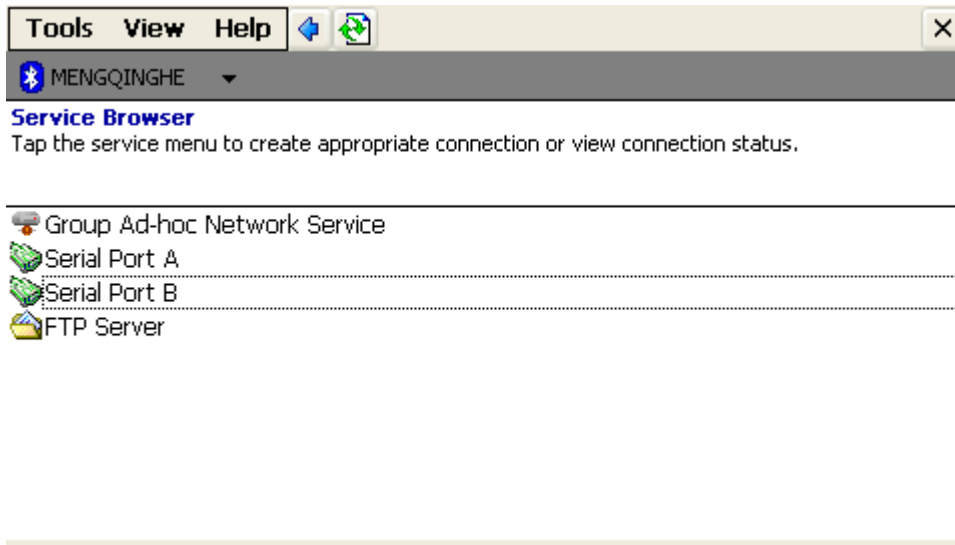


Figure 8.7 Two activity connections

Step 6: View the active connections in Tools.

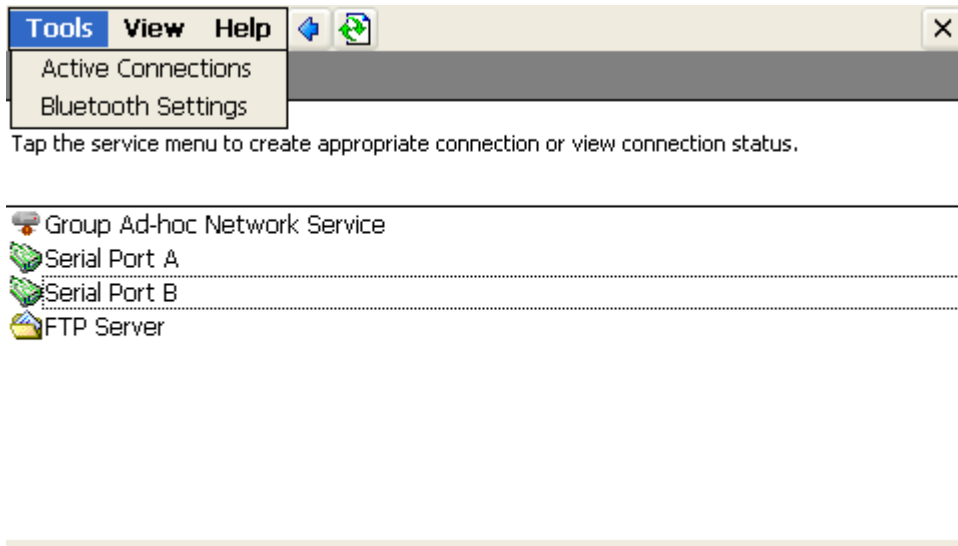


Figure 8.8 Tools

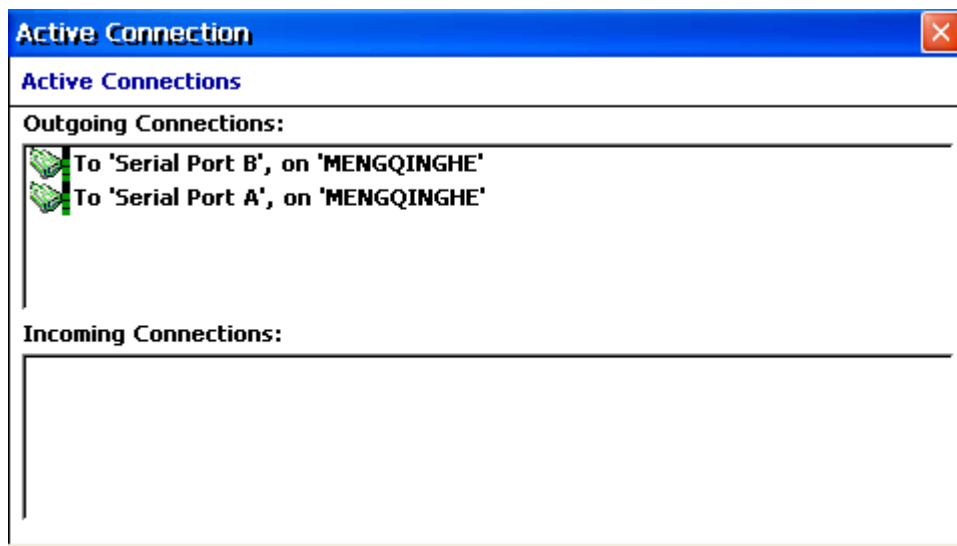



Figure 8.9 Active connection managers

Step 7: Disconnect SPP connection.

- ◆ Select Disconnect on the pop-up menu after clicking current SPP connection for several seconds.
- ◆ Disconnect the current connection in **Active Connections** window.

9 Object Push Profile

With the OPP profile of BlueSoleil™ CE, user can exchange business card or file with remote device.

Step 1: Tap  Exchange Personal Information in Bluetooth Manager to search the Bluetooth devices which support OPP service in limited range automatically.

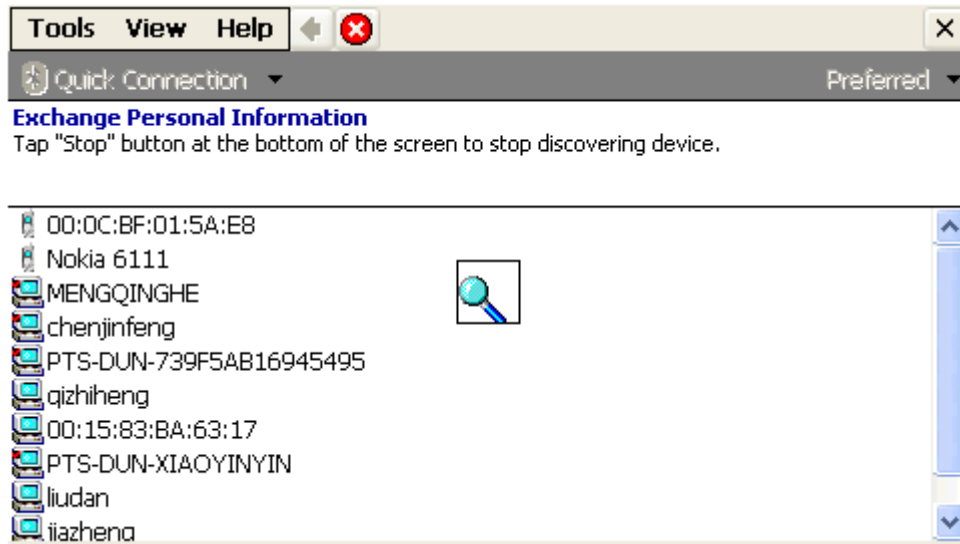


Figure 9.1 Preferred devices

Step 2: Pair with a device. (See the section [5 Pair with a Device](#)). If you only know the Bluetooth address of the preferred device, you can select "Find device" and input the address, it will focus the specific device.

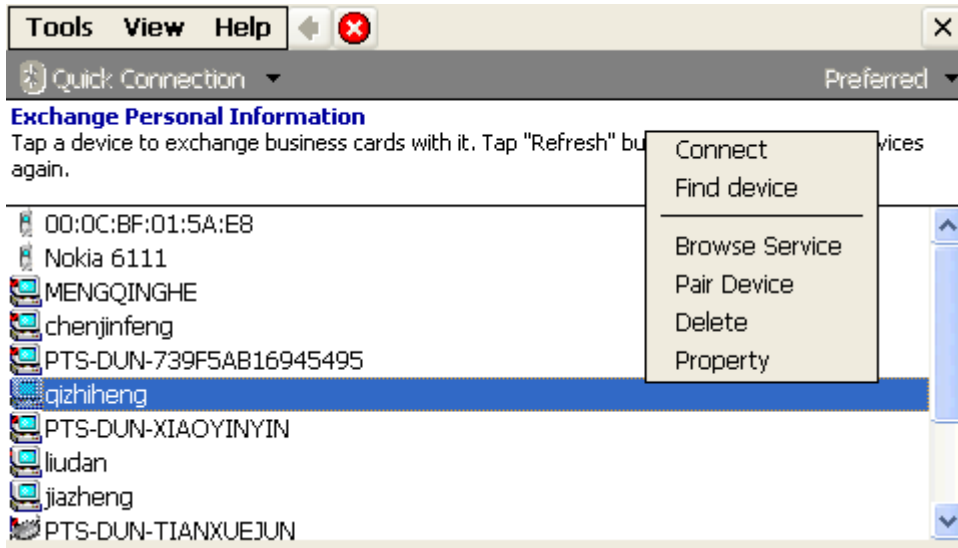


Figure 9.2 Find device

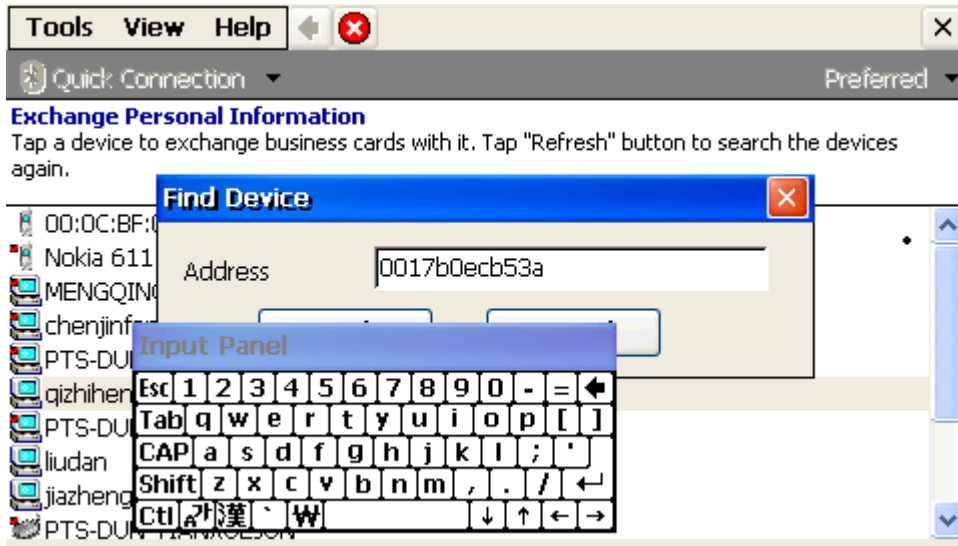


Figure 9.3 Input Bluetooth address

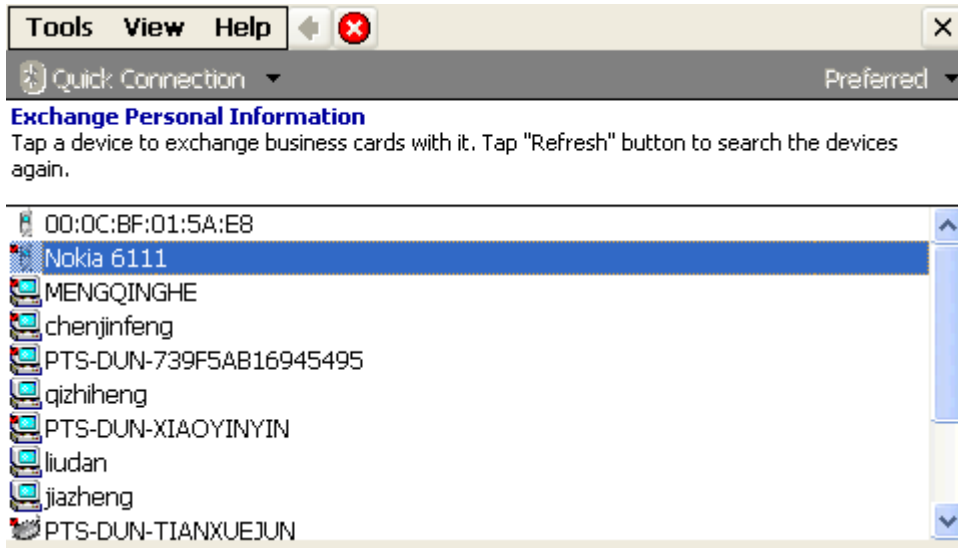


Figure 9.4 Find device finish

Step 3: After a remote device has been successfully paired. User can pull, push or exchange business card or PIM Object with it. Simply press the device and choose the operation in pop up window. Then BlueSoleil™ will connect the device and process the operation automatically.

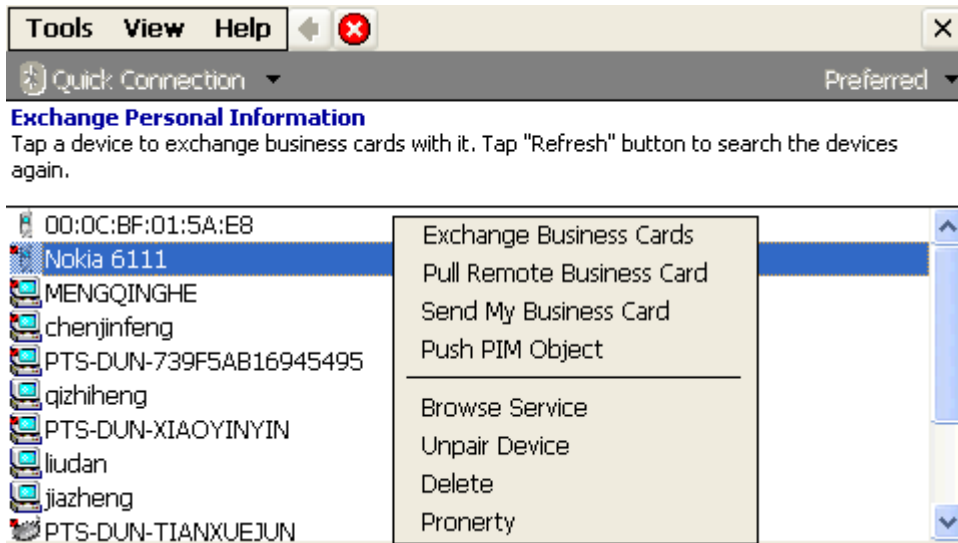


Figure 9.5 Process OPP operations

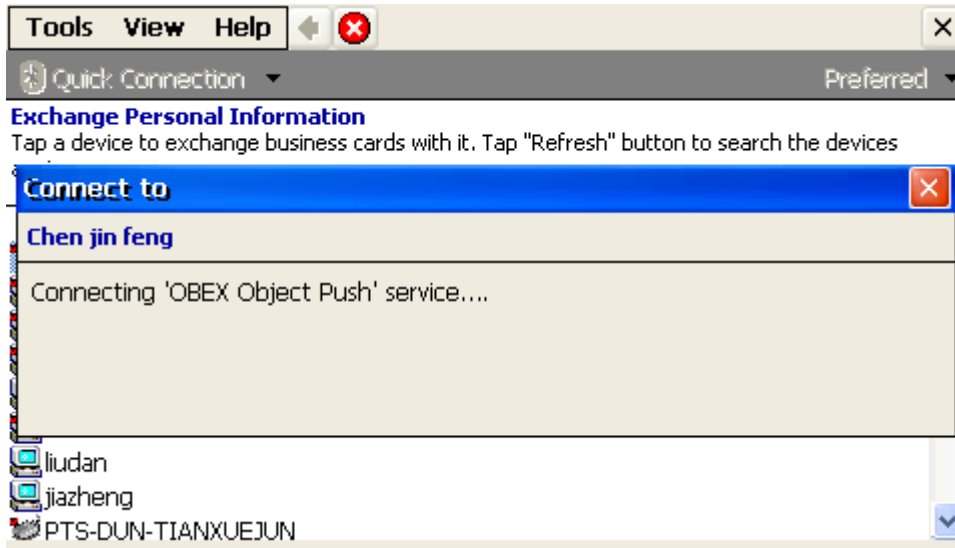


Figure 9.6 Connect OPP service

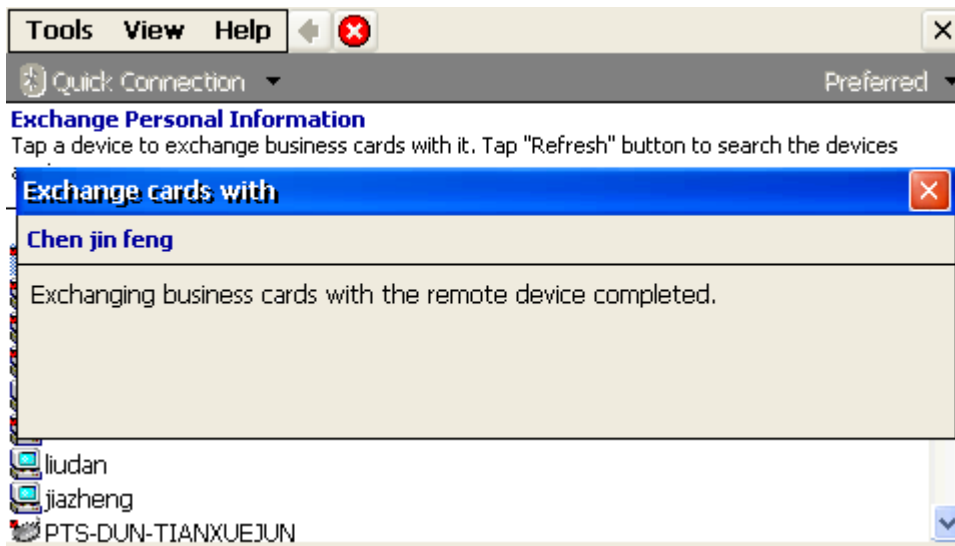



Figure 9.7 Exchange business card complete

10 Dial-up to Internet

BlueSoleil™ CE acts as the DUN client (Data Terminal). The DUN Profile is used to cellular phone/modem by a computer as a wireless modem for connecting to a dial-up internet access server or using other dial-up services.

Cellular phone or modem by a computer to receive data calls.

Step 1: Tap  Dial-up to Internet in Bluetooth Manager to search the *Bluetooth* wireless technology enabled devices which support DUN service in limited range automatically.

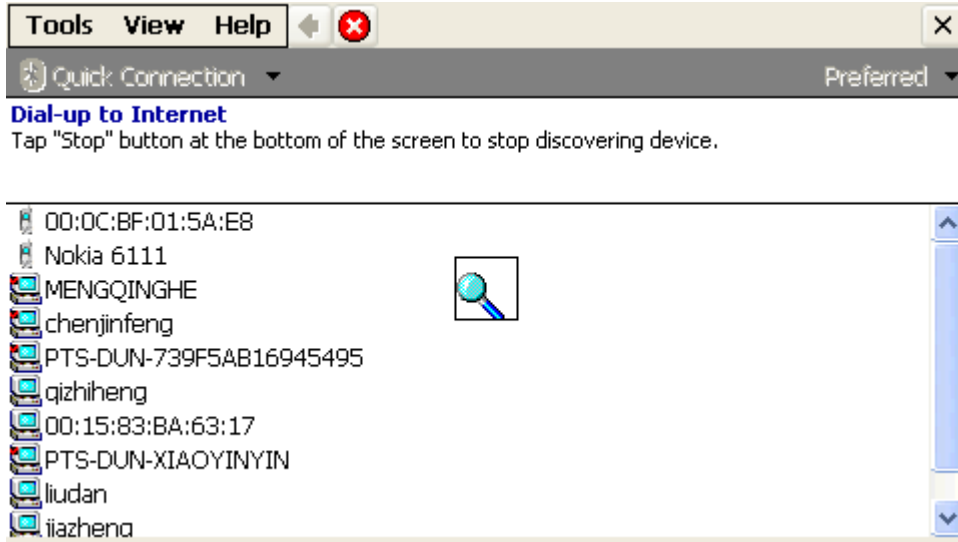


Figure 9.1 Preferred devices

Step 2: Pair with a device. (See the section [5 Pair with a Device](#)). If you only know the Bluetooth address of the preferred device, you can select "Find device" and input the address, it will focus the specific device.

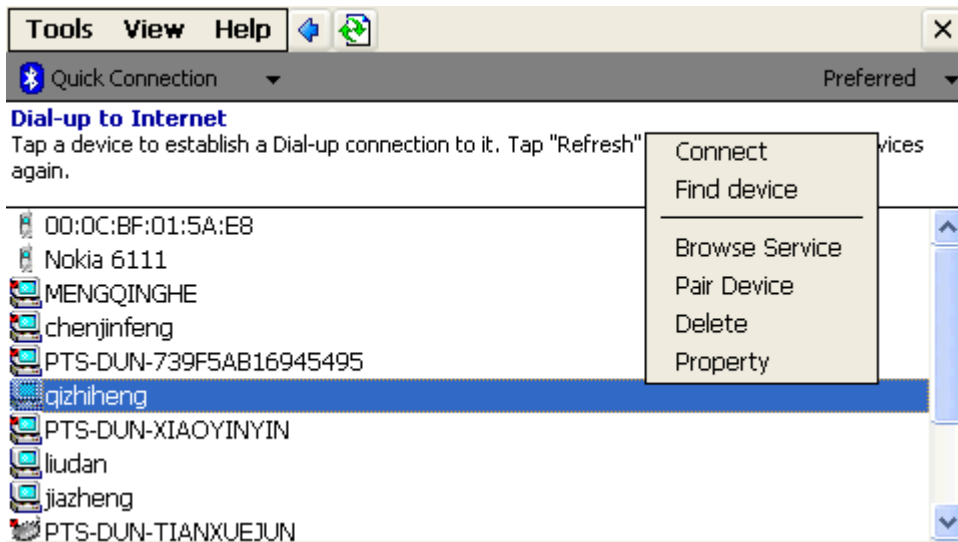


Figure 9.2 Find device



Figure 9.3 Input Bluetooth address

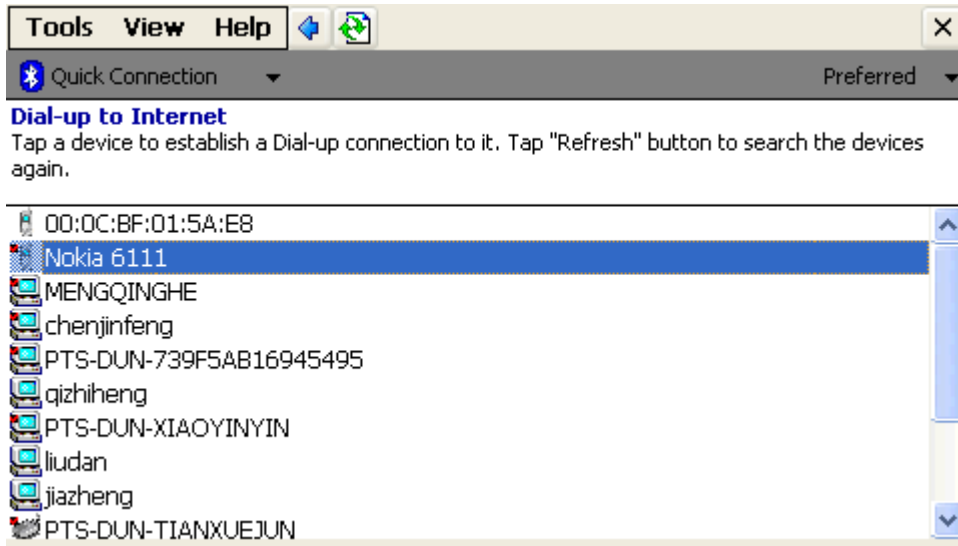


Figure 9.4 Find device finish

Step 3: Explore the DUN service that the selected device provides and then connect it.

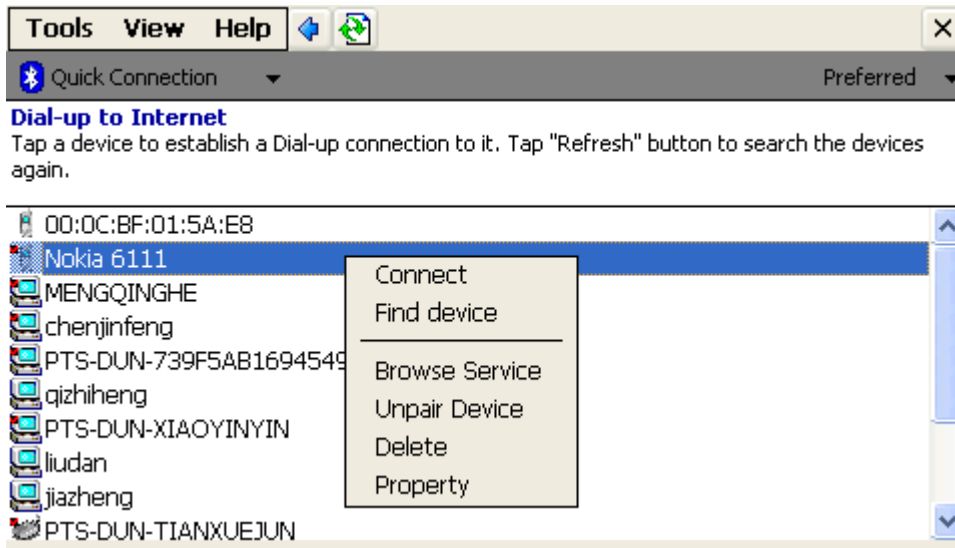


Figure 9.5 Connect to DUN

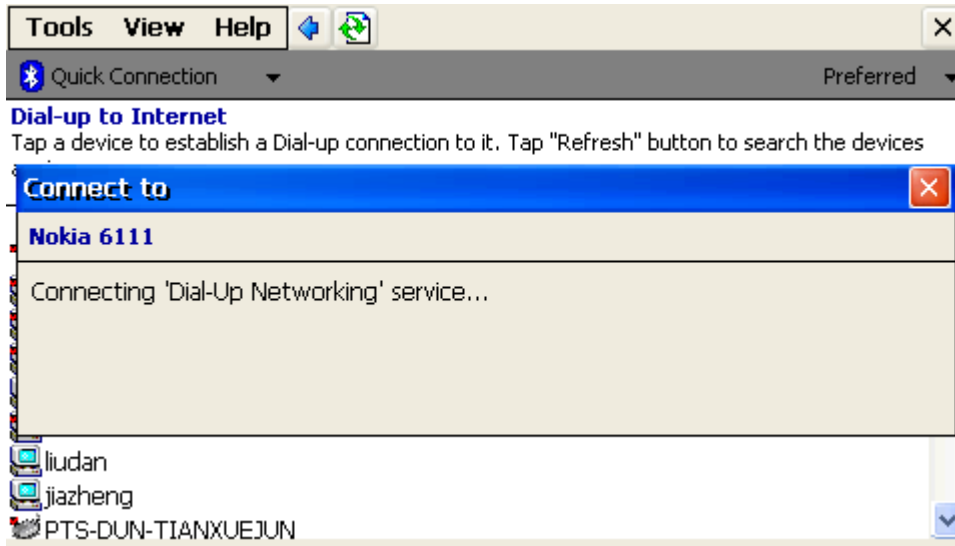


Figure 9.6 Connecting

Step 4: A dialog window requesting a username and password will pop up. You can change the connection name as you want. The phone number is decided by your mobile phone network provider. Only one call at a time is supported. Before a cellphone or modem can be used with a PC/Laptop for the first time, an initialization procedure must be performed. This typically involves manually activating initialization support, and entering a PIN code on the PC/Laptop keyboard.

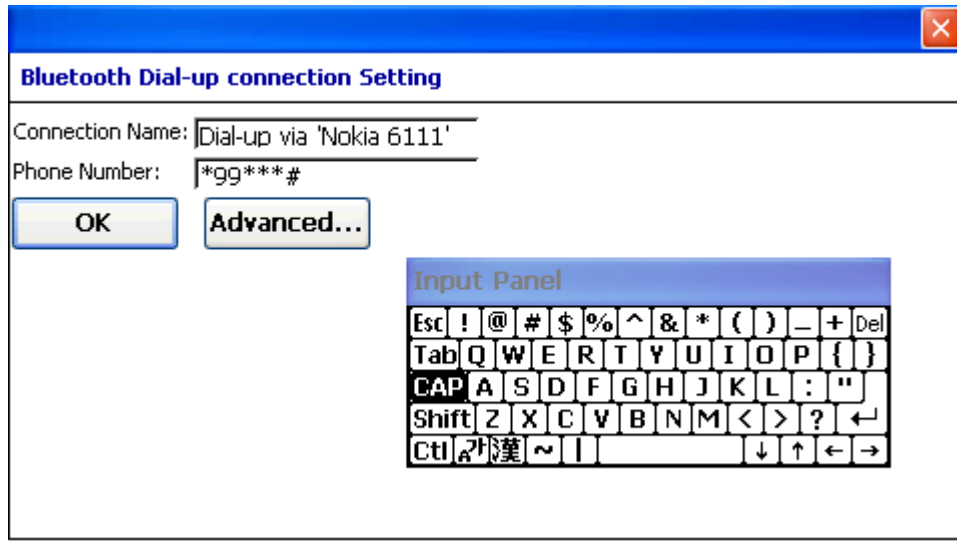


Figure 9.7 Input phone number

Step 5: Connecting to Dial-up service.

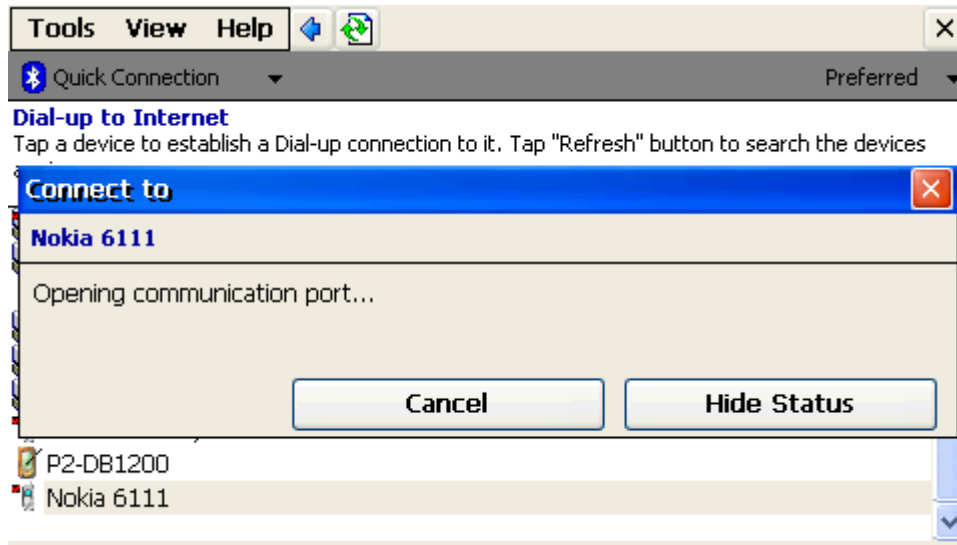


Figure 9.8 Opening communication port

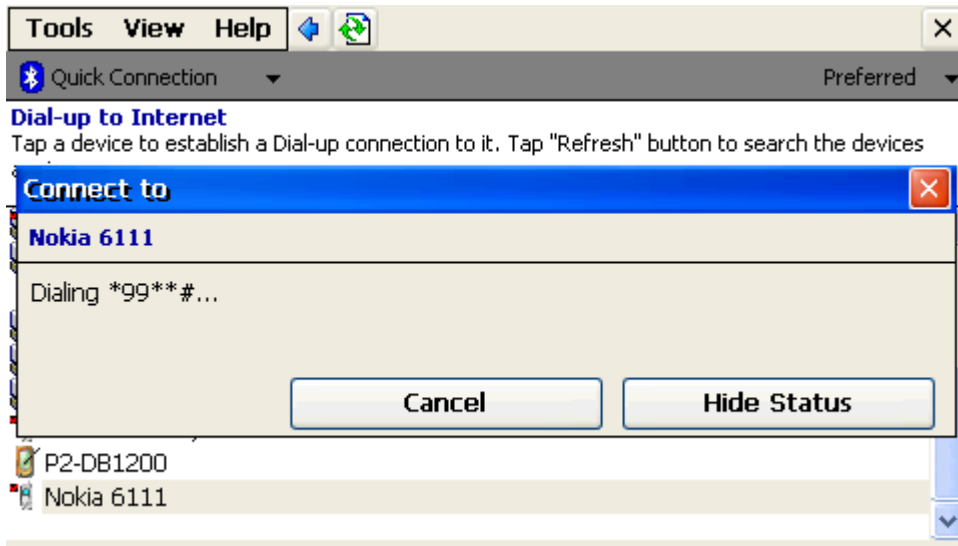


Figure 9.9 Dialing the phone number

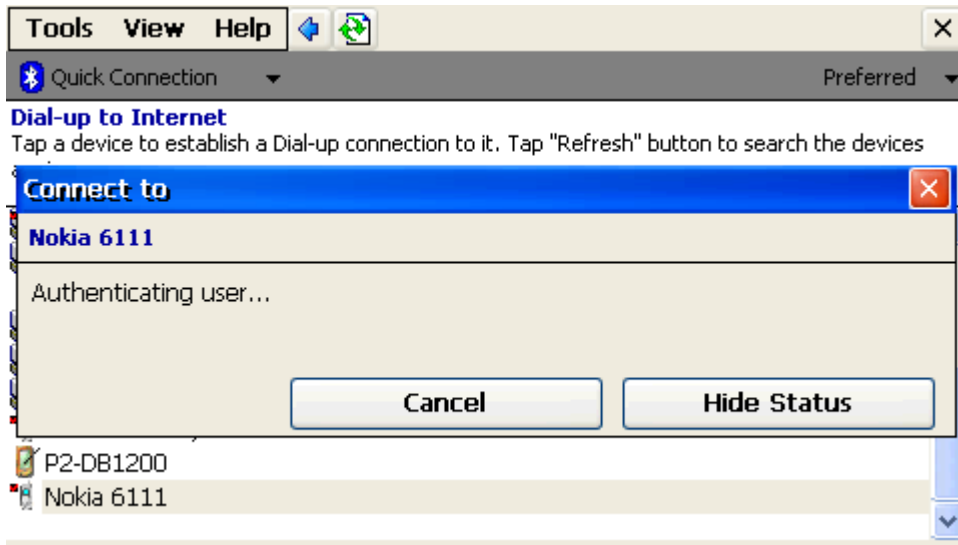


Figure 9.10 Authenticate the device

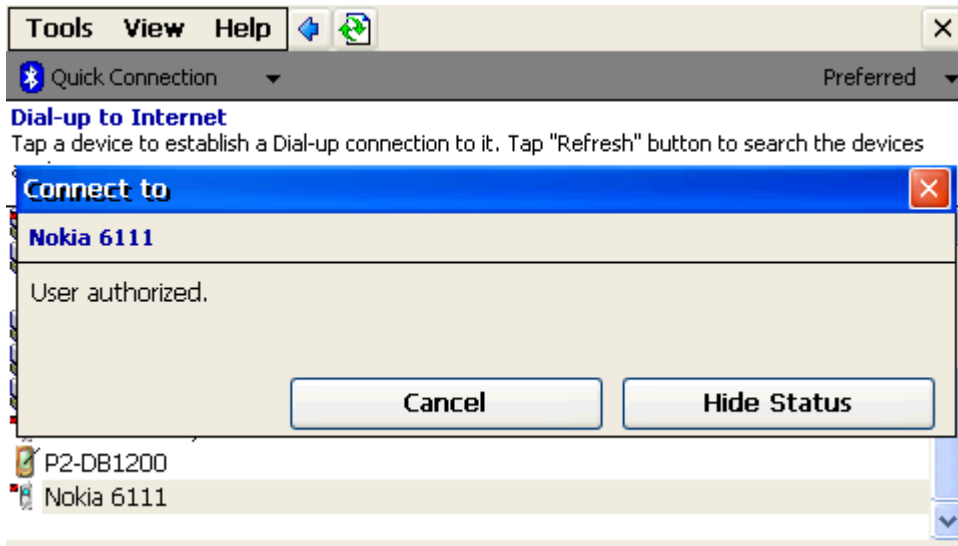


Figure 9.11 Authentication finish

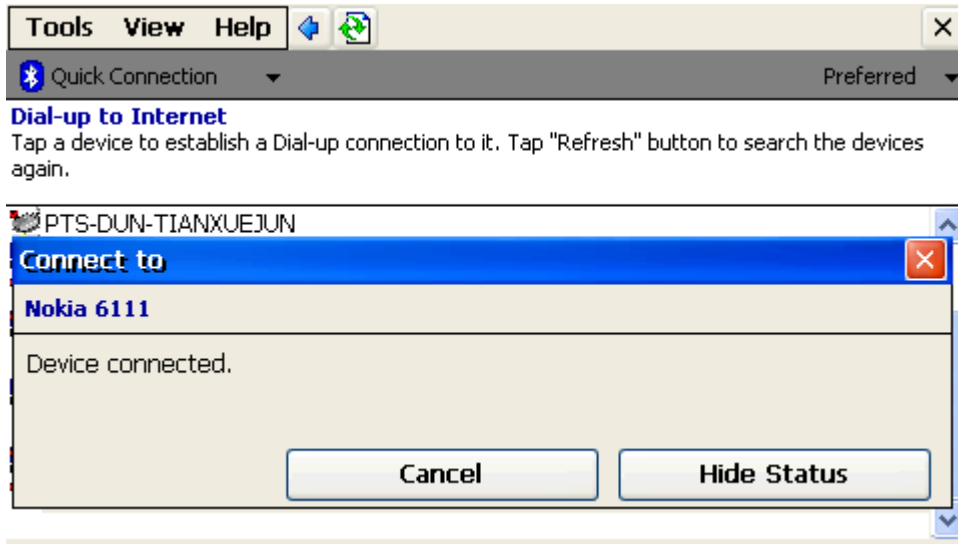


Figure 9.12 Establish connection finish

Step 6: If establish connection successfully, it will jump to “My shortcut”. The user data is transported by serial port emulation. You can access available resource of Internet the mobile phone provided.

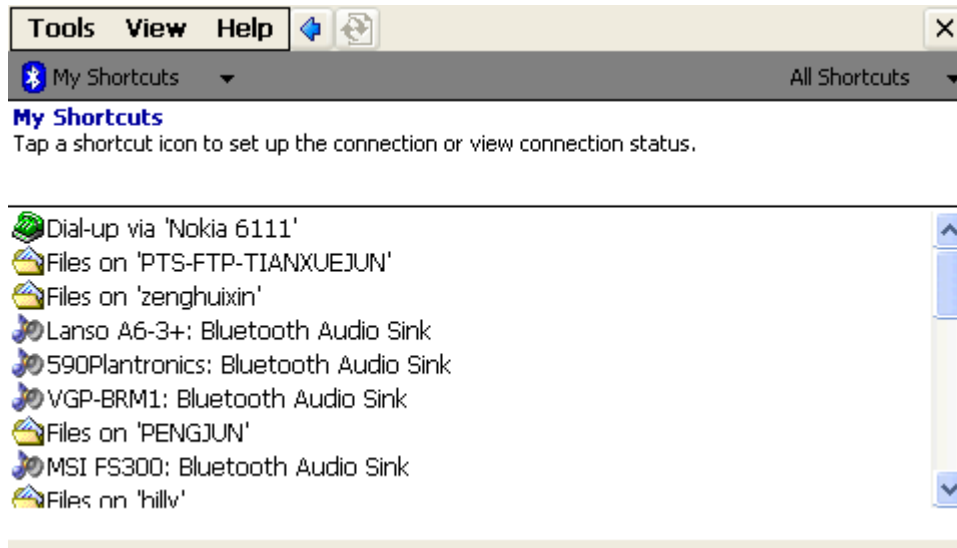


Figure 9.13 DUN shortcut



Figure 9.14 Explore a website

Step 7: Disconnect DUN connection.

- ◆ Select Disconnect on the pop-up menu.

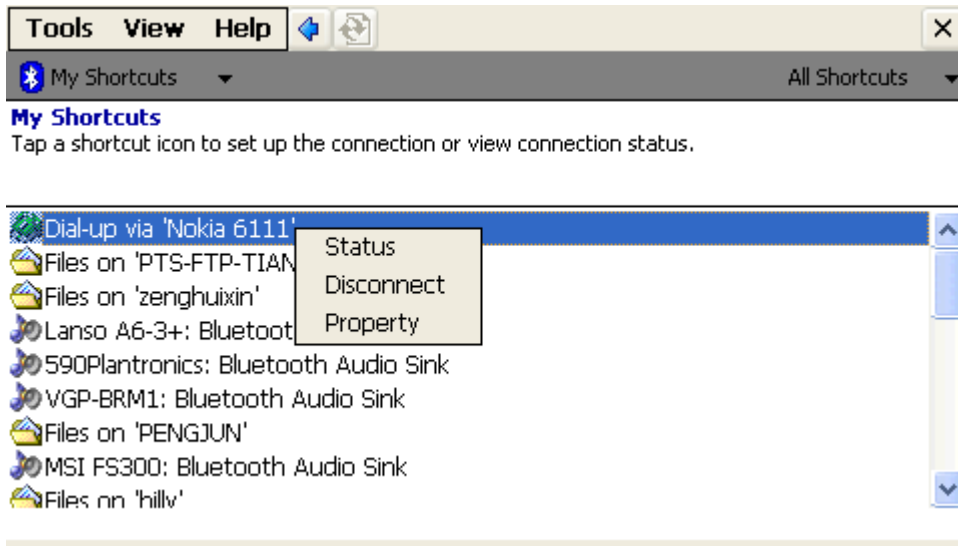


Figure 9.15 Disconnect the connection in My shortcuts

- ◆ Disconnect the current connection in **Active Connections** window.

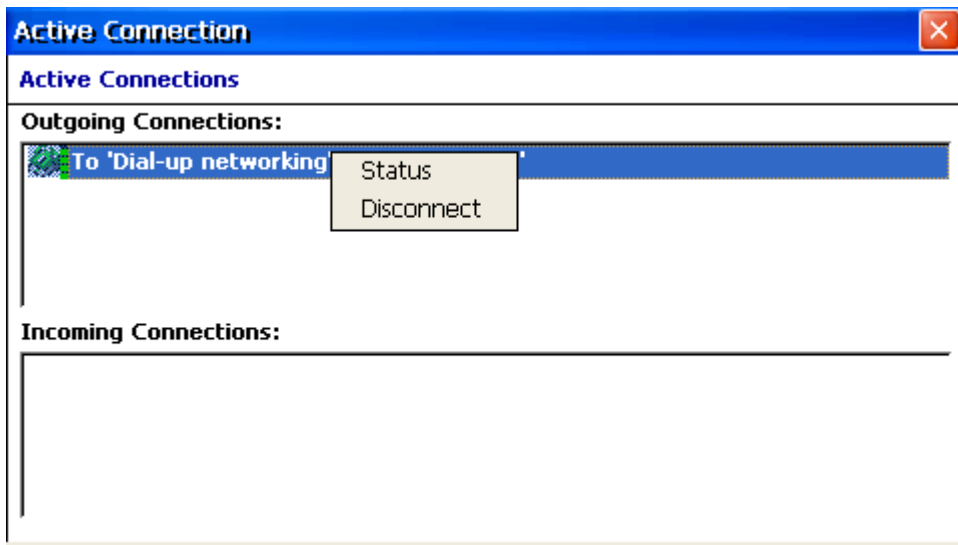


Figure 9.16 Disconnect

11 Personal Area Network

There are three roles defined in PAN profile V1.0. They are (1) Network access points, (2) Group Ad-hoc Networks, (3) PANU-PANU. BlueSoleil™ CE acts as the PAN User (PANU). According to its roles, three Scenarios are discussed:

a. Network Access Points-PANU


A network access point is a unit that contains one or more Bluetooth radio devices and acts as a bridge, proxy, or router between a Bluetooth network and some other network technology.

b. Group Ad-hoc Networks-PANU

Group ad-hoc networking allows mobile hosts to cooperatively create ad-hoc wireless networks without the use of additional networking hardware or infrastructure. A piconet consists of one Bluetooth device operating as a piconet master communicating with between 1 and 7 active Bluetooth devices operating as slaves. A group ad-hoc network is a set of computing devices which interact with each other to form a self-contained network, the network being formed without the need for additional external networking hardware.

c. PANU-PANU

A point to point connection between two PANUs allows direct communication between these two nodes only.

Step 1: Tap  **Access Personal Area Network** in Bluetooth Manager to search the Bluetooth enabled devices which support FTP service in the limited range automatically.

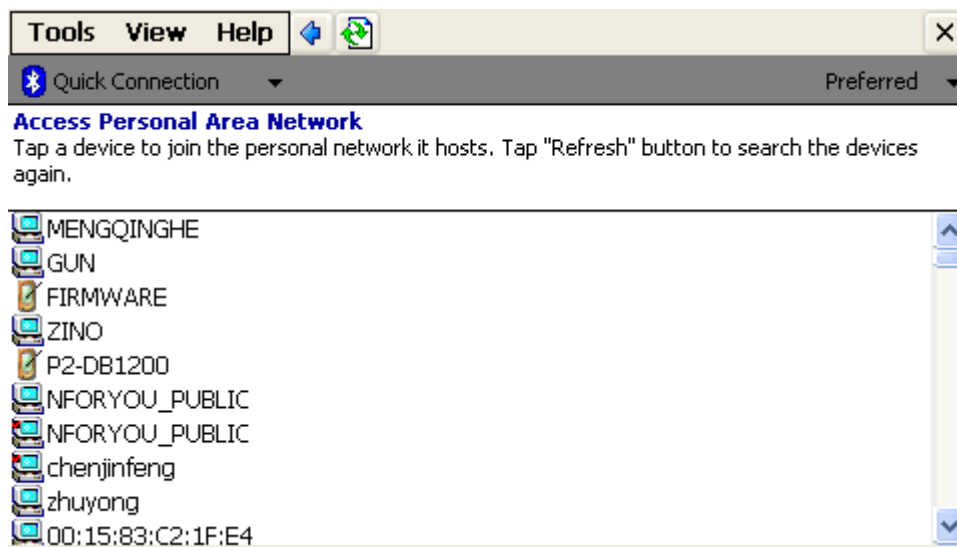


Figure 10.1 Preferred devices

Step 2: Pair with a device. (See the section [5 Pair with a Device](#))

Step 3: Select a device and then connect it.

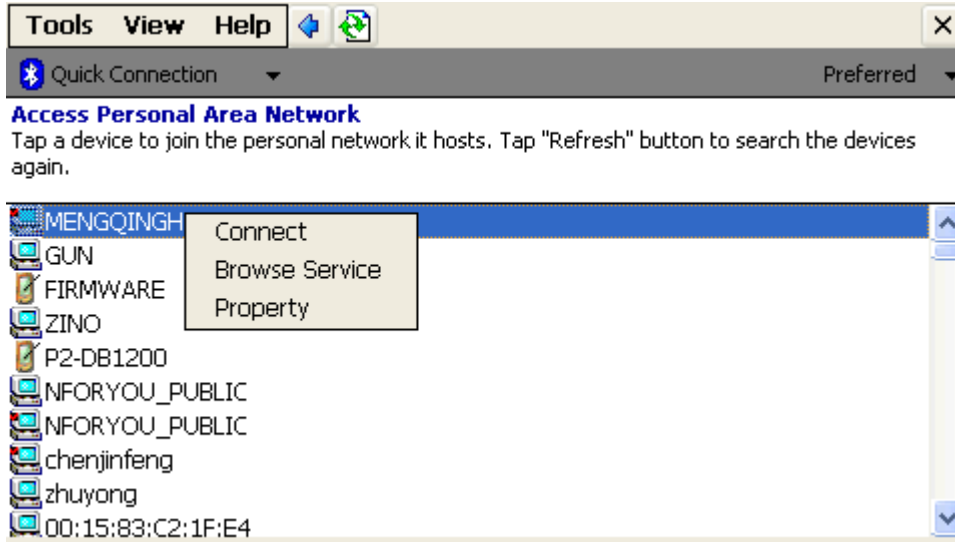


Figure 10.2 Connect

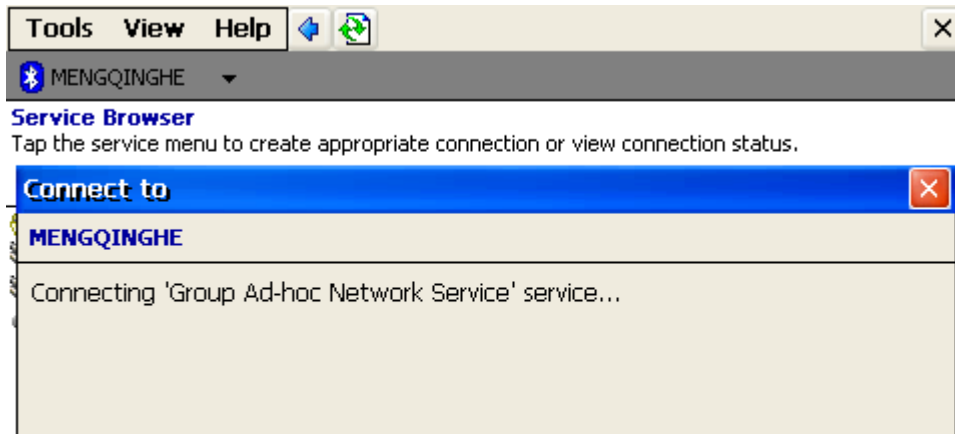


Figure 10.3 Connecting

Step 4: If the connection is successfully established, it will jump to "My shortcuts" directly. There lists all shortcut if have established the connection before or you added by selecting "Create shortcuts" in the pop-up menu.

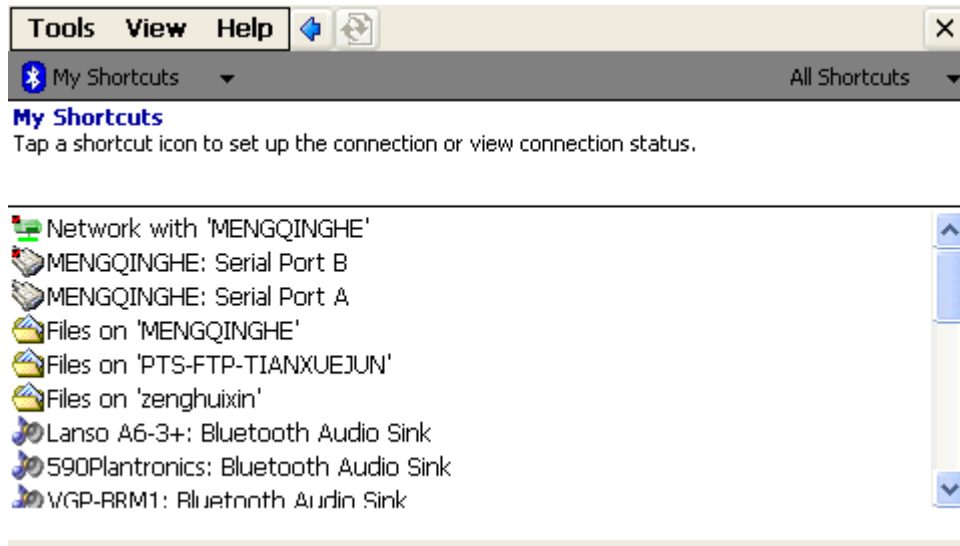


Figure 10.4 Disconnect the connection in My shortcuts

Step 5: The Group Ad-hoc Network and the PAN User exchange data using the Bluetooth Network Encapsulation Protocol (BNEP). Group Ad-hoc Networks do not provide access to any additional networks. Instead, Group Ad-hoc Networks are intended to allow a group of devices to form temporary network and exchange information.


Step 6: Disconnect PAN connection.

- ◆ Select Disconnect on the pop-up menu after clicking current PAN connection for several seconds.
- ◆ Disconnect the current connection in **Active Connections** window.

12 ActiveSync

BlueSoleil™ CE acts as IrMC Server. There are two roles defined in Synchronization profile, they are:

- a. IrMC Server: This is the IrMC server device that provides an object exchange server. Typically, this device is a mobile phone or PDA. You can simplify seem it as the server who provide the information resource.
- b. IrMC Client: This is the IrMC client device, which contains a sync engine and pulls and pushes the PIM data from and to the IrMC Server. Usually, the IrMC Client device is a PC.

Step 1: Tap  ActiveSync via Bluetooth in Bluetooth Manager to search the Bluetooth enabled devices which support FTP service in the limited range automatically.

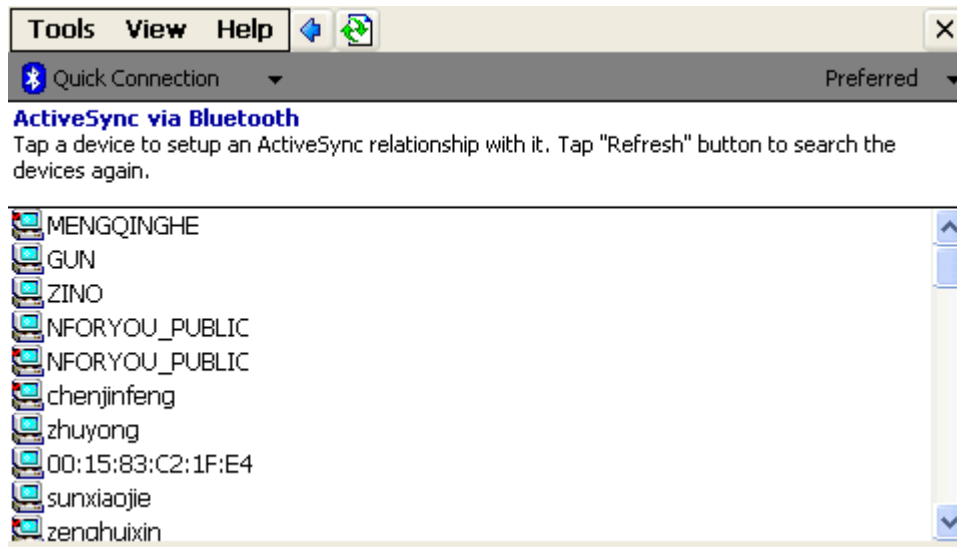


Figure 11.1 Preferred devices

Step 2: Pair with a device. (See the section [5 Pair with a Device](#))

Step 3: Select a device and then connect it.

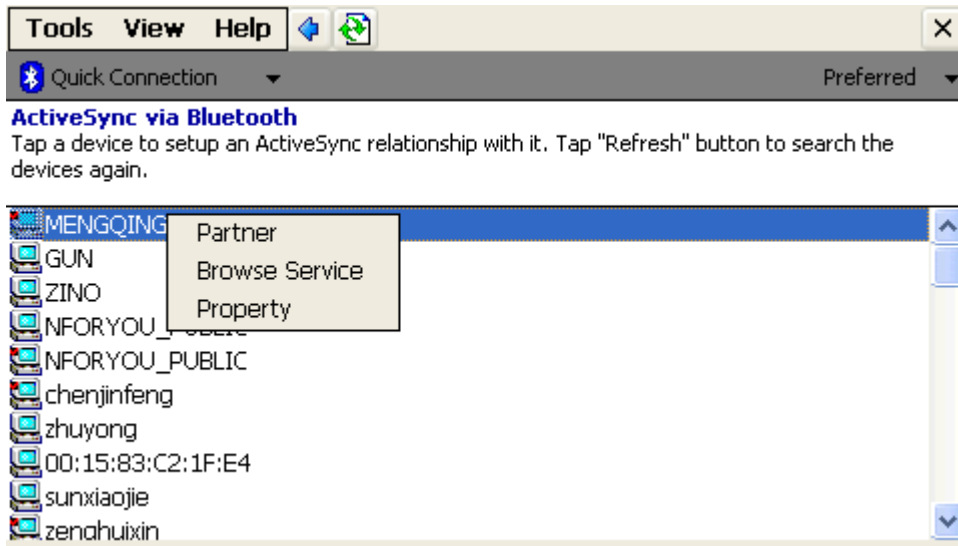


Figure 11.2 connect to A2DP service

Step 4: If the connection is successfully established, it will jump to “My shortcuts” directly. You can synchronize phonebooks, calendars, messages, and notes in PC side.

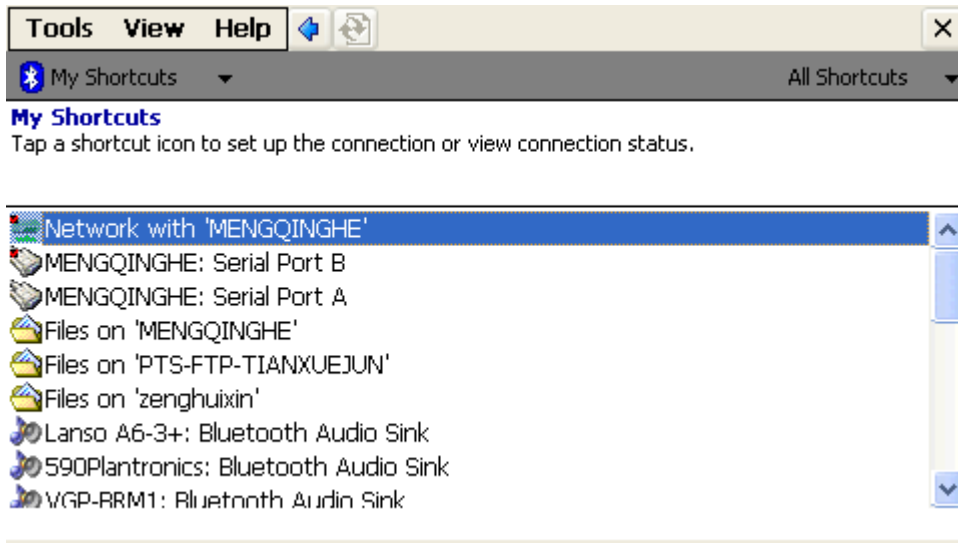


Figure 11.3 My shortcuts

Step 5: Disconnect PAN connection.

- ◆ Select Disconnect on the pop-up menu after clicking current connection.

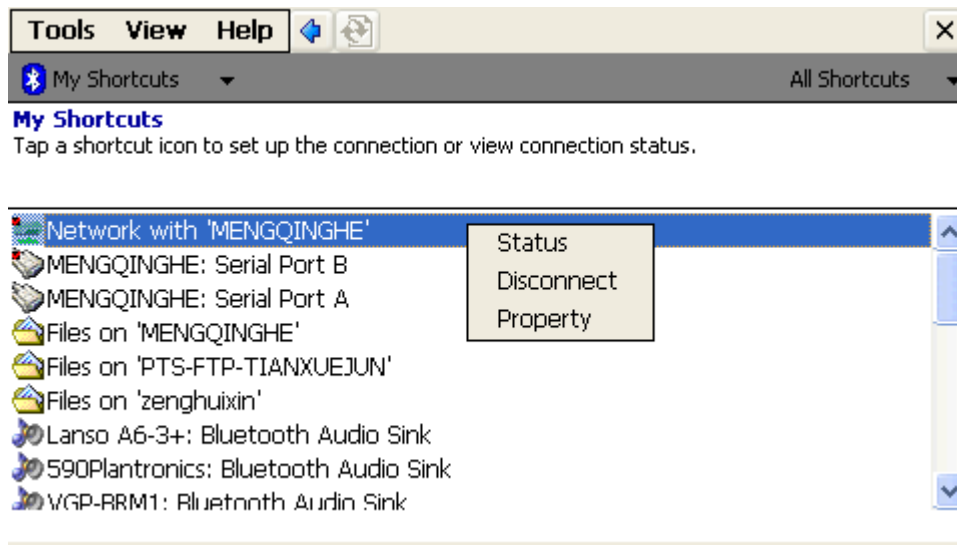


Figure 11.4 Disconnect the connection in My shortcuts

- ◆ Disconnect the current connection in **Active Connections** window.

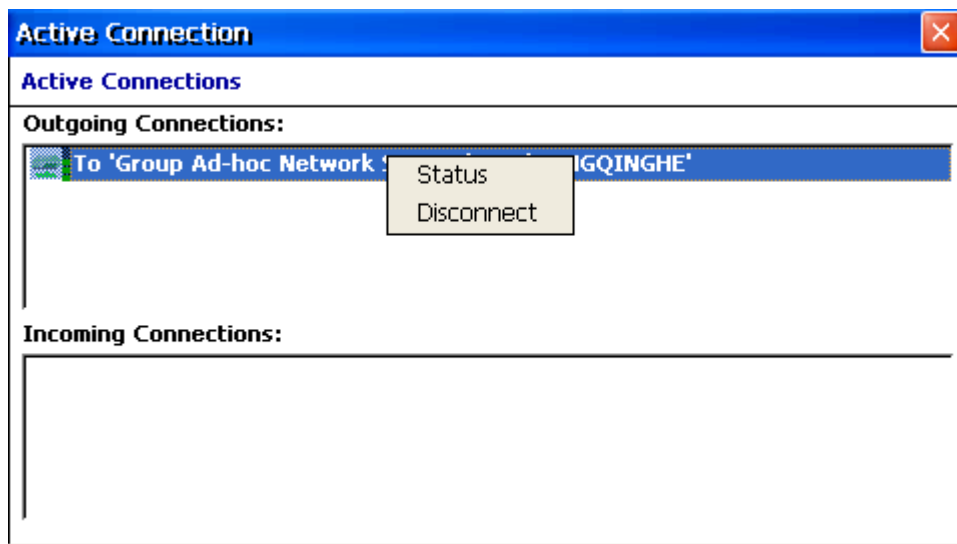


Figure 11.5 Disconnect the connection in Active connections

13 A2DP/AVRCP

BlueSoleil™ CE acts as A2DP source and AVRCP target. It can let user listen to the high quality sound from headset after establish connection successfully and the current state of music playing in the device can be controlled by headset.

Step 1: Pair with a stereo headset. Input the passkey which set by the headset manufacturer. (See the section [5 Pair with a Device](#))

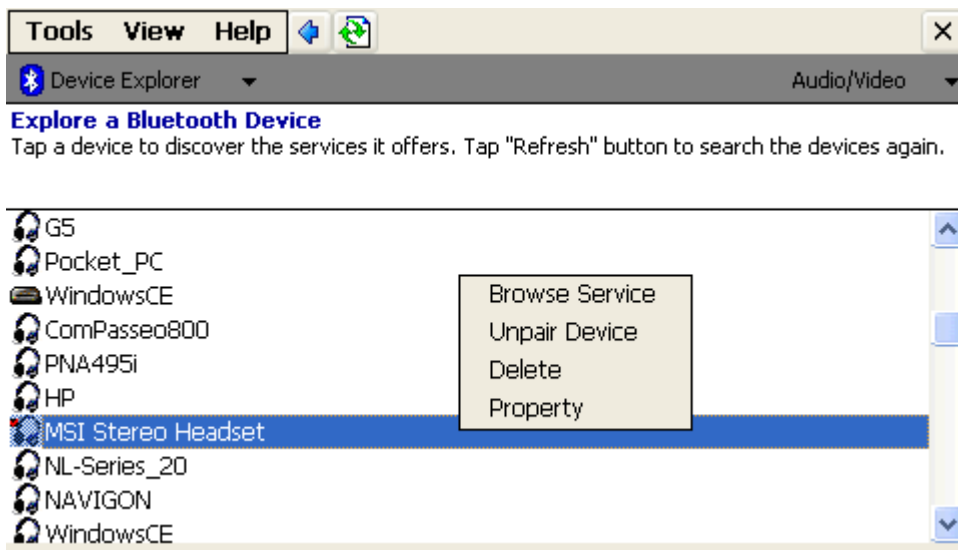


Figure 12.1 Pair with a stereo headset

Step 2: Explore the A2DP service that the selected device provides and then connect it.

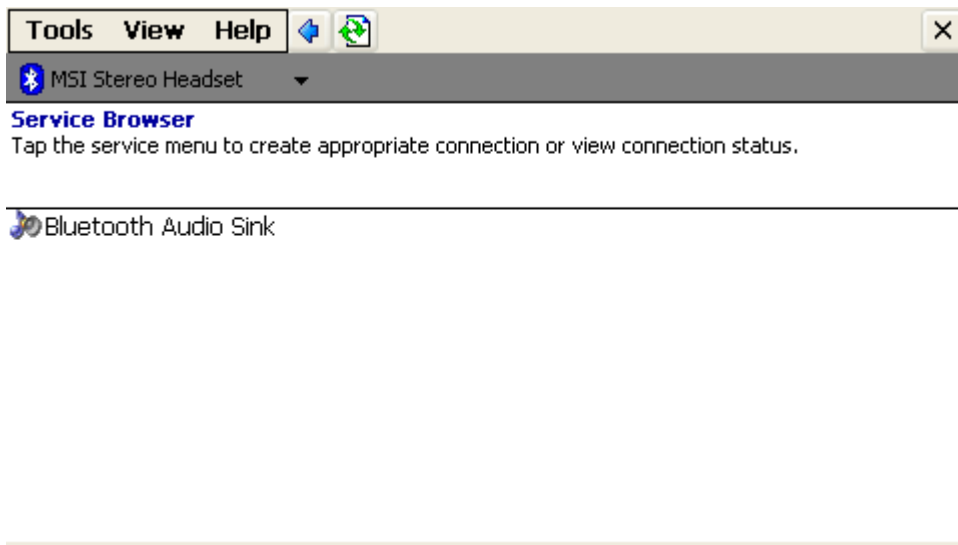


Figure 12.2 connect to A2DP service

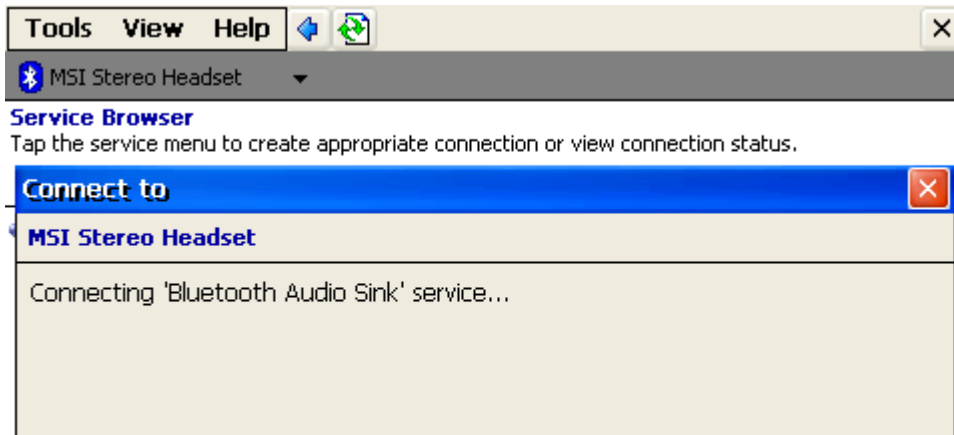


Figure 12.3 connecting

Step 3: Connect successfully.

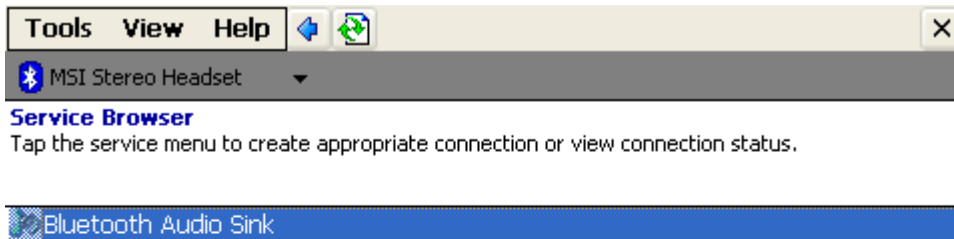


Figure 12.4 Establish connection finish

Once connected the Play, Pause, Previous and Next button in the Headset device can be pressed to control the playing of an Audio Player or a Video Player. User can listen and control music via Bluetooth remote devices such as headset.

Note:

- An A2DP shortcut will create automatically in the Shortcut window after establish the connection. You can double click its own shortcut icon (represented by the Connection Name) and clicks connect on the pop-up menu to re-establish the connection in the shortcut window. More details please refer to [14 My Shortcuts](#)

Step 4: Disconnect A2DP connection.

- ◆ Select Disconnect on the pop-up menu after clicking current A2DP connection for several seconds.

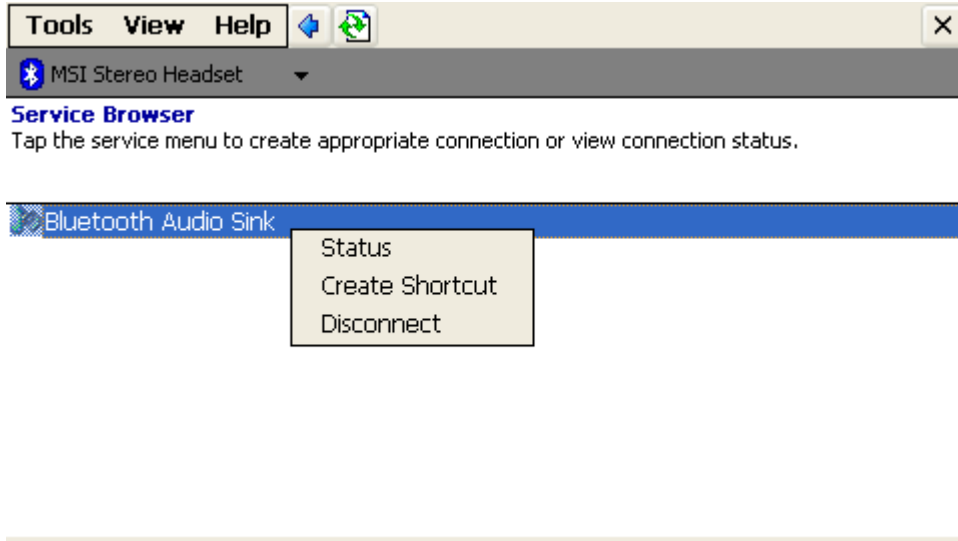


Figure 12.5 Disconnect

- ◆ Disconnect the current connection in **Active Connections** window.

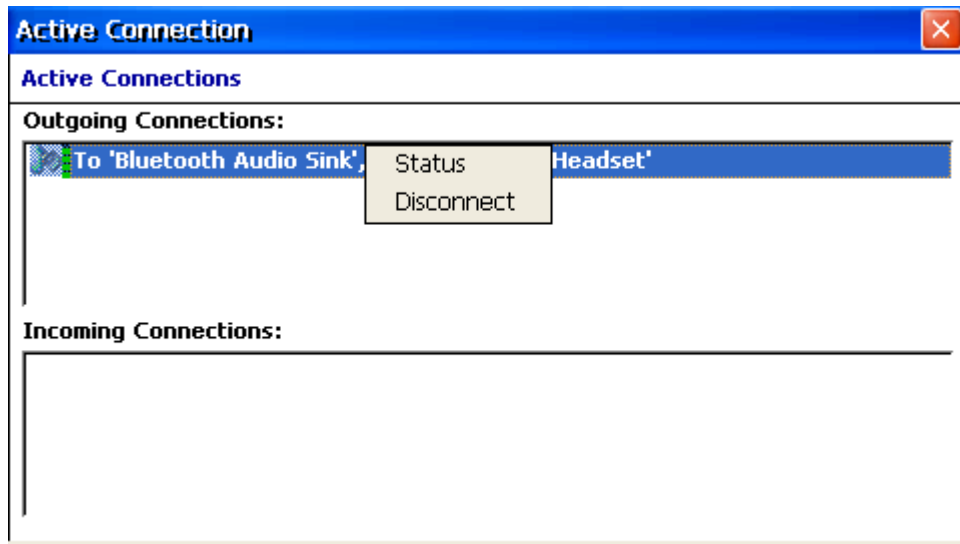



Figure 12.6 Disconnect

14 My Shortcuts

Tap  My Shortcuts to enter My Shortcuts. The service shortcut was represented by the connection Name. The activity connection is green.

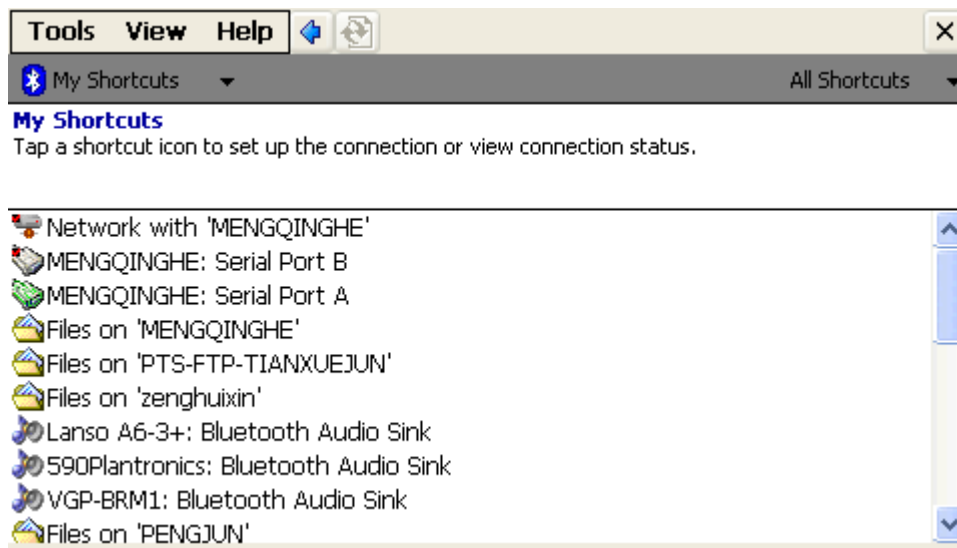



Figure 13.1 My shortcut

- ◆ Tap  to go back to Bluetooth Manager Interface.
- ◆ Tap **All Shortcuts** to class Shortcuts by type as below.

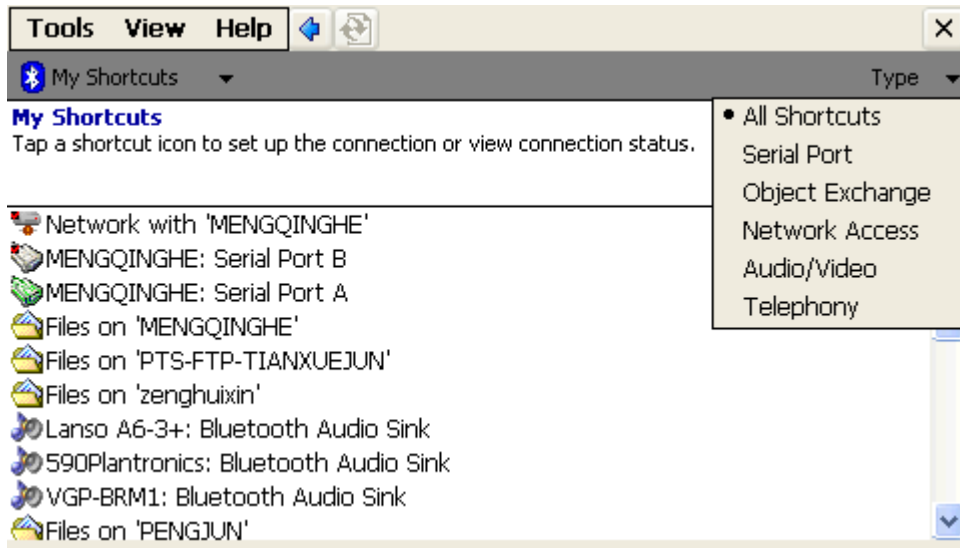


Figure 13.2 Class all shortcuts by type

Select a free connection and select “connect” on the pop-up menu to re-establish the connection in the shortcut window, take the follow shortcuts for example:

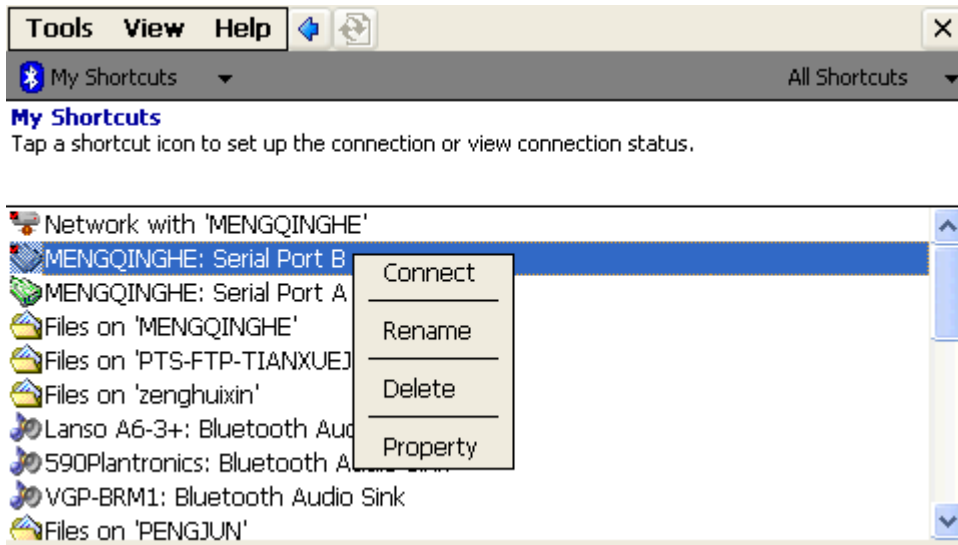


Figure 13.3 Reconnect

If the shortcut belongs to FTP, select “Explore Folder” to show the remote device file list.

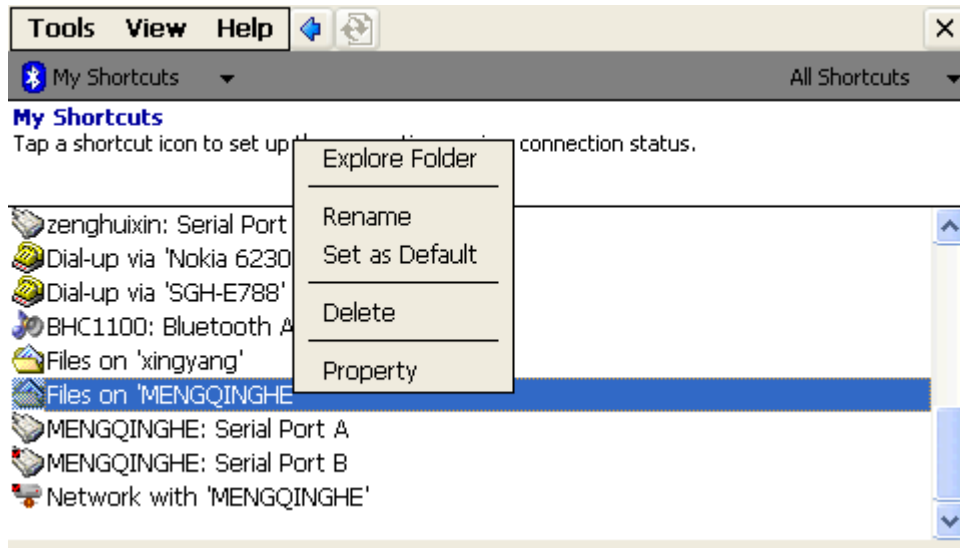


Figure 13.4 FTP shortcut Reconnect

You can view the property of the device owns this connection.

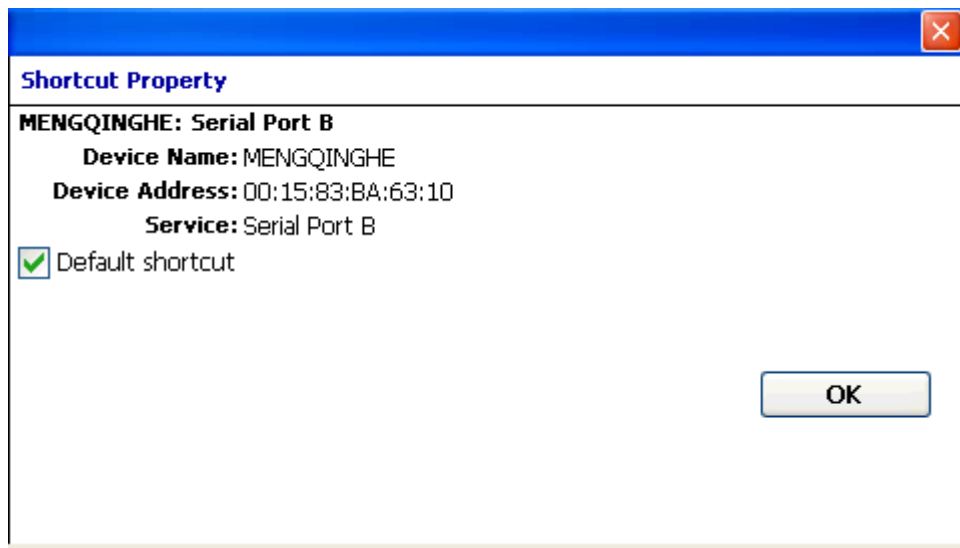


Figure 13.5 Device property

After reconnect finish, you can view the state of the activity connection and do the operation normally.

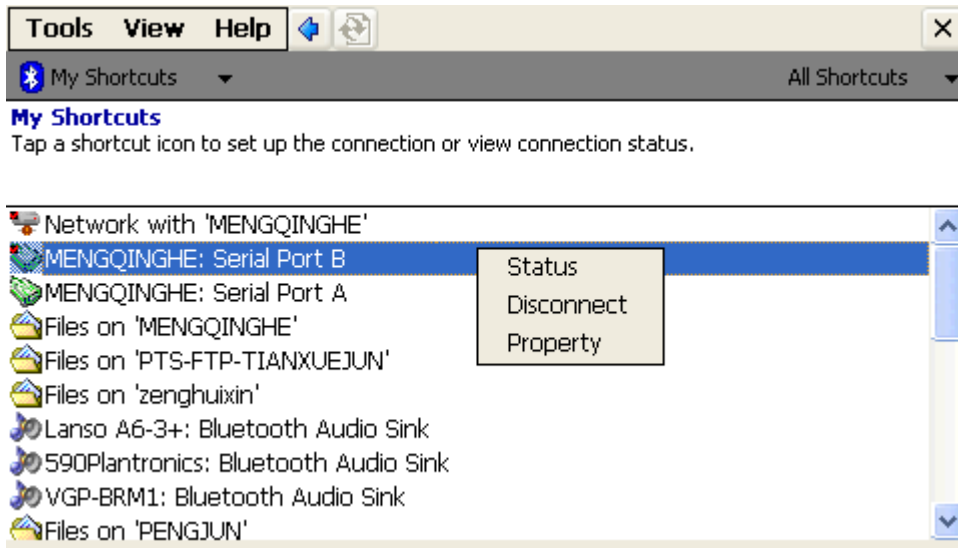


Figure 13.6 Reconnect successfully

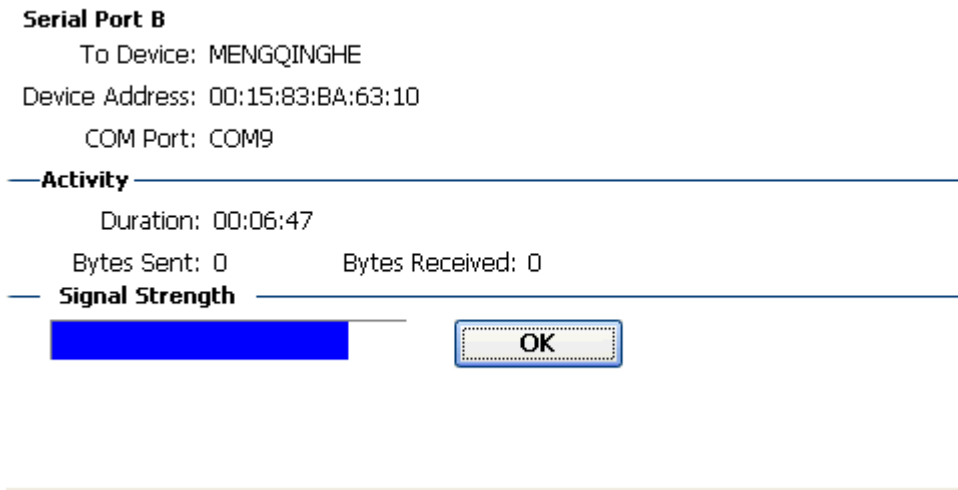


Figure 13.7 Connection's status

There is one more function "Set as Default". Any type shortcut has only a default shortcut. If the shortcut has set being the default one, a red symbol will be marked on its representation icon. If a shortcut, take FTP for example, has been set as the default one, and then you want to another as the default. Just set the latter one, you can see the red symbol moving from the previous one to the latter one.

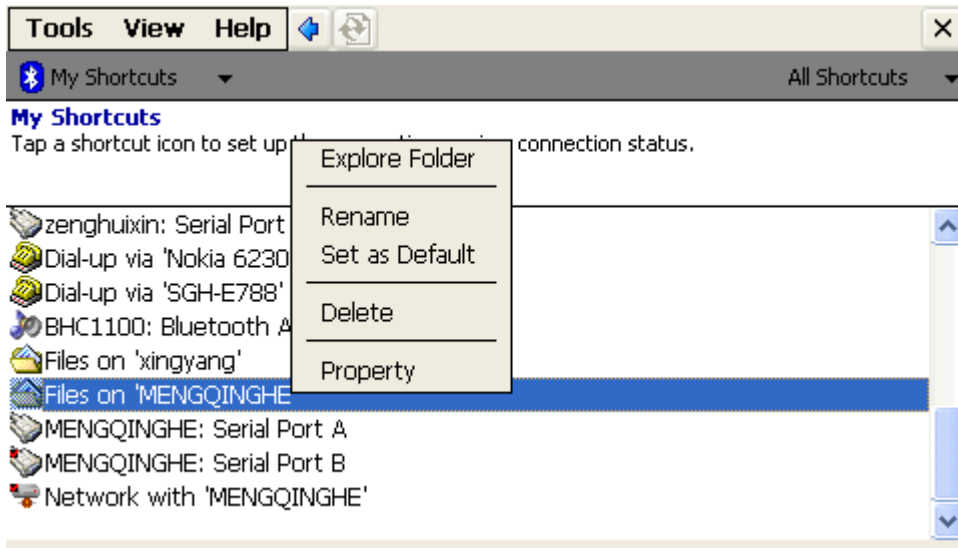


Figure 13.8 FTP shortcut

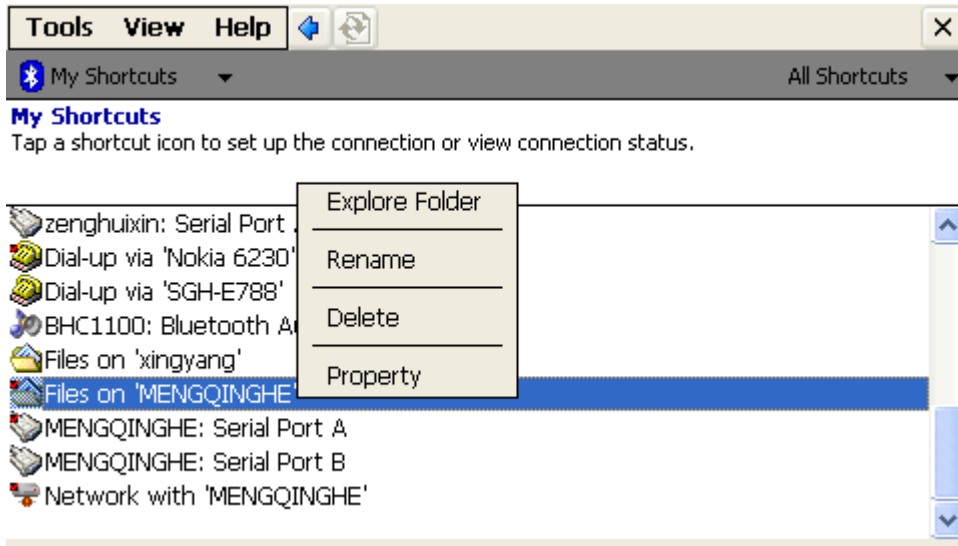


Figure 13.9 Set it as the default one

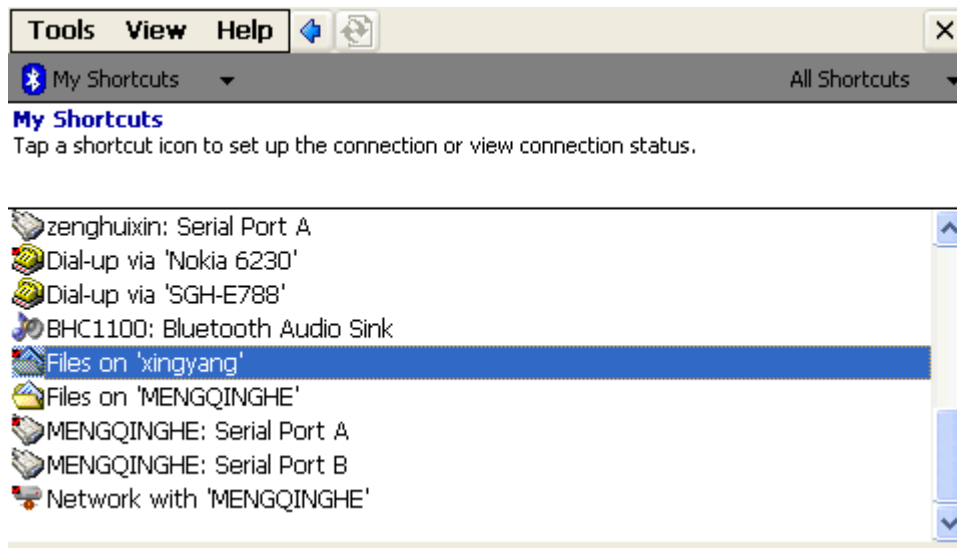


Figure 13.10 Set another FTP shortcut as the default one

15 FAQ

N/A.

The **Bluetooth** word mark and logos are owned by the **Bluetooth** SIG, Inc. and any use of such marks by **IVT Corporation** is under license. Other trademarks and trade names are those of their respective owners.