



# BSD

# LinkLine

## Building Systems Design, Inc.

A Newsletter for BSD SoftLink® Customers and Friends

FALL 2006

## BSD SpecLink®: The Next Generation

### Part II

This is the second in a series of articles that discusses BSD's new generation of the SpecLink system. If you missed the first article, it's in the Summer 2006 edition of LinkLine that can be found at [www.bsdsftlink.com/linkline/current/linkline\\_archives.htm](http://www.bsdsftlink.com/linkline/current/linkline_archives.htm). Referred to as SpecLink-E (or E for short), it is new software from the ground up, designed to support an Internet-based information system continually supplying you with the most up-to-date data. E is packaged as easy-to-install software that keeps itself updated from a network or Internet-based site controlled by you or your designated administrator.

In the first article we talked about the impetus behind development of SpecLink-E, its basic screen layout and user interface, and the new user-definable "Global Terms" feature. This quarter we want to go a little

deeper, and how the "client" component works.

#### Configuration and Installation

Our goal with the new system is to make quarterly installations and updates a thing of the past while keeping both software and data even more up-to-date than we do now. To achieve this, we are separating software updates from data updates. Data updating is designed to be continuously available via the Internet. You or a designated administrator will decide when and how often updates are actually applied, allowing updates to the master database at night or other opportune times. We'll cover more about data updates in a minute.

BSD's E has two distinct components: a "client" component that runs on each user's computer, and a "server" component that, in a multi-user environment, is installed on a (possibly remote) network server (Figure 1). In a single user situation the server can be

See "TNG" on page 5

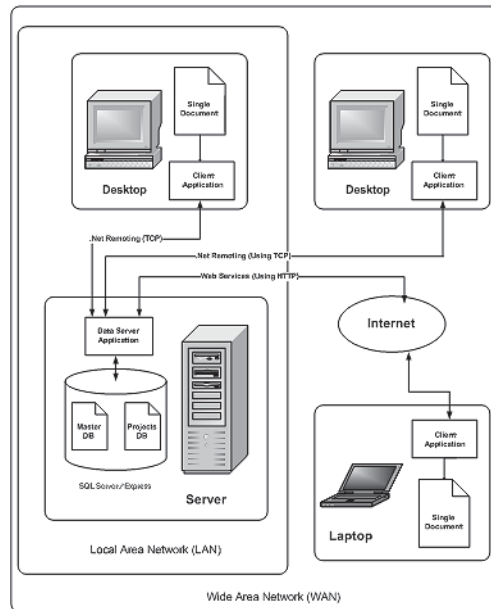


Figure 1. SpecLink-E Configuration

deeper and describe system configuration and installation, what the "server" compo-

### Table of Contents

SpecLink®: TNG	
Part II .....	1
Staying Current .....	1
BSD SpecLink® Contributes to Katrina Reconstruction ..	2
BSD Customer Case Study: Bledsoe .....	2
About Your SpecLink & PerSpective Updates .....	3
About the ASTM Updates ....	3
Late Breaking News .....	3
New and Revised SpecLink Sections .....	4
New MasterFormat Website	4
Are You Sacrificing Updating for Control? .....	4
Q&A .....	6
Upcoming Conferences .....	7
Training Schedule .....	8

## Staying Current

Subscribers to BSD SpecLink know it's the only specifications product on the market that verifies every reference standard included in the master database on not less than an annual basis. What many subscribers don't know, however, is that SpecLink includes thousands of hyperlinks that allow you to connect to a website for more information about every reference standard. If the standard is free, the hyperlink connection allows you to read the document online or download it. If the document is not free, the hyperlink for that standard will direct you to a site where you can purchase it.

In previous editions of SpecLink, the hyperlinks were located only in the master notes attached to the reference standard citations in Part 1 of each section. Since reference standards are selected automatically in SpecLink, many of our users were unaware of the existence of the hyperlinks. In the current edition of SpecLink, we have added hyperlinks to the master note at any paragraph that includes a mention of a reference standard. This latest change has meant the addition of thousands of hyperlinks to the master database. Every standard is now linked from at least two locations—the full citation in Part 1 and at least one place in the text where the standard is referenced. In the case of paragraphs where more than one reference standard is cited, the hyperlink leads to the "front door" of the IHS E-store. In all other cases, the hyperlink leads directly to a source for that particular document.

See "Staying Current" on page 2

## SpecLink Cuts Specification Writing Time in Half at Bledsoe Architects

Bledsoe Architects couples artistry with technical ability, depth of resources, and vision to achieve the best possible design. The firm's experience includes a wide range of architectural design and other services, such as strategic and master planning, site planning, project scheduling, new building design, and existing building renovation. Their projects include healthcare and educational facilities, religious buildings, and restaurants.

**The Need:** Bledsoe Architects understands how important it is to meet client requirements. However, in 2004 they realized they had an internal need that was not being met. Masterspec, the commercially available specification program they were using, was not working for them. Formatting and editing were cumbersome. Checking reference standards took a long time. They wanted to find something that would better meet their needs.

**The Solution:** Once he saw how easy it was to edit and format with SpecLink, Ben Bledsoe, AIA, Principal with Bledsoe Architects, was sold on the program. He says, "What do I like best about SpecLink? It is easy to use — and to re-use. By using the SpecLink office master, I am able to edit

project specifications much faster. I especially like having all choices intact — in case changes are required during project development."

Bledsoe estimates his firm is creating specifications in half the time it took with their previous system. He continues, "With SpecLink, it is much easier to make the necessary specification modifications. The

global page formatting, headers, footers — everything is MUCH better than the way we used to do it!"

**The Outcome:** In addition to the formatting features, Bledsoe also likes how SpecLink helps keep information such as reference standards up to date. And he says that the coordination notes have helped to make their documents even better.

Not long ago, Bledsoe had two projects he was working on. He recalls, "I recently completed specifications for two separate projects, totaling over \$9 million in construction costs. The projects were very similar, yet quite different. I completed them in less than a week. It used to take us weeks to get that much work coordinated and printed."

Bledsoe's closing comment: "We would not go back to Masterspec if you paid us." ■

*"What do I like about SpecLink? It is easy to use - and to re-use."*

**Ben Bledsoe,**  
AIA, CSI, CCS,  
LEED AP Architect  
Principal,  
Bledsoe Architects

*"Staying Current" continued from page 1*

We include the current date on every standard within BSD SpecLink, but one mouse click allows you to print all reference standards with or without publication dates. More importantly, we obtain and check all the revised and updated standards for changes that could potentially affect your specifications. We make any changes needed in every section affected by a revised standard, regardless of the number. This quarter, for instance, we updated 269 sections, or 46 percent of the total!

Helping you avoid obsolescence in your specifications is one of the major benefits offered by BSD SpecLink. With this expanded hyperlink feature, it's now possible for you to obtain information about the most current reference standards, and to obtain copies of those you need—quickly and easily. We hope you enjoy and take advantage of this new feature. ■

## BSD SpecLink® Contributes to Katrina Reconstruction

August 29, 2006 is the first anniversary of Hurricane Katrina, one of the most devastating natural disasters to hit the United States. In the year since the hurricane struck Louisiana and Mississippi, a great deal of reconstruction has occurred, but much remains to be done. The city of New Orleans in particular suffered due to widespread flooding, and has undergone what may be a permanent reduction in its population, with more than 250,000 former residents now living elsewhere.

Like many businesses, architecture and engineering firms across Louisiana and Mississippi have been adversely affected. Some no longer exist, while others have been severely downsized. Immediately after the storm, over 1/3 of the architects who belonged to the New Orleans chapter of the AIA either had no place to work, no place to live, or both. Firms with most of their work in New Orleans or the immediately surrounding areas were suddenly out of work, with contracts on hold or cancelled. Cash flow came to a sudden stop.

Recognizing the difficulties that were likely for these companies, Building Systems Design offered free BSD SpecLink® one-year comprehensive subscriptions to any professional firm in the areas designated by FEMA as severely affected by the hurricane.

In the year since that offer was made, 13 firms have taken advantage of it. At least four dozen SpecLink projects have been initiated in Louisiana since the free subscriptions began. Some are new buildings, others are renovations. A significant number are schools and churches; other projects are commercial, and a few are residential. They have one thing in common: The specifications for all these projects were created with BSD SpecLink.

We are pleased to have played a small part in the ongoing reconstruction of New Orleans and the Gulf Coast, and we are happy to have new subscribers who will continue that work into the future. ■



# About Your SpecLink & PerSpective Updates

## SpecLink+ Statistics:

- 580 sections total, 269 updated or new (46%)
- 5 new non-proprietary sections
- 524 non-proprietary sections, 248 updated or new (47%)
- 56 proprietary sections, 21 updated (37%)
- 42 sections with built-in checklists
- 96,541 paragraphs
- 105,060 internal links (targets and consequences)
- 26,670 notes to specifier
- 15,347 notes with live hyperlinks to Internet web pages
- 2,120 external documents referenced, with live hyperlinks to order information
- 955 ASTMs referenced, 100% verified this quarter, 29% updated

- 5 ASTMs never before referenced, 3 obsolete
- 1,165 other documents referenced, 5% verified this quarter
- 183 standards organizations referenced
- 2,396 manufacturer listings, with live hyperlinks to their web sites

## Short Form Specs Statistics:

- 16 sections corresponding to MasterFormat 1995 divisions
- 10 sections updated (63%)
- 8,304 paragraphs
- 1,559 notes to specifier, 1,018 with live hyperlinks
- 6,785 internal links (targets and consequences)
- 362 external documents referenced
- 224 ASTMs referenced, 100% verified this quarter

- 138 other documents referenced, 2% verified this quarter
- 43 standards organizations referenced

## PerSpective Performance Specs Statistics:

- 161 sections, 18 updated (14%)
- 17,381 paragraphs
- 18,462 internal links (targets and consequences)
- 4,012 notes to specifier, 920 with live hyperlinks
- 188 external documents referenced, with live hyperlinks to order information
- 50 ASTMs referenced, 100% verified this quarter
- 138 other documents referenced, 6% verified this quarter
- 39 standards organizations referenced

## About the ASTM Updates

Standards published by the American Society for Testing and Materials (ASTM) make up 44% of the 2,194 documents referenced in SpecLink, the Short Form specs, and PerSpective - the largest number published by a single organization. All of those ASTMs were verified in the last quarter - 30% had been revised and 3 withdrawn. Each revised standard was compared to the previous edition and evaluated for its potential effect on the specifications before updating the sections. The ASTM updates affected 46% of SpecLink sections, 10 of the 16 Short Form sections, and 14% of PerSpective performance specifying sections.

Monitoring the continual, irregularly timed changes to ASTMs might be an almost impossible project, except that ASTM publishes an annual 4-volume compendium of the standards referenced in the model building codes, SpecLink and PerSpective, and other guide specifications - *ASTM Standards in Building Codes*. BSD furnishes ASTM the information they need to ensure that all of the standards referenced in SpecLink, Short Form, and PerSpective sections are included in this set.

We use *ASTM Standards in Building Codes* as the "current" edition for purposes of referencing edition dates for one reason: It's

simple. We know that most design professionals don't have copies of many, if not most, of the ASTMs referenced, so we've chosen as our definitive edition the simplest (as well as the most economical) way to purchase them. For \$899, you get over 1,300 ASTM's related to construction, in print and with a CD-ROM. There are three other ways to get ASTMs: Individually at an average of \$30 per standard; individual volumes of the complete 77-volume set of all ASTMs at \$150-250 each; or the entire collection for over \$8,000 in either print or CD-ROM.

If you decide to add ASTMs to your reference library, we recommend *ASTM Standards in Building Codes*, published annually in early July, for \$899. If you are not an ASTM member, you can get the 10 percent member discount if you place your order with Suzanne Pagano at (610) 832-9612 or [spagano@astm.org](mailto:spagano@astm.org); tell her you are a BSD SpecLink/PerSpective subscriber. For more information, go to [www.astm.org](http://www.astm.org).

**To purchase a single ASTM, just click the hyperlink in the note next to the citation in the spec - the IHS Standards store sells them for the same price as ASTM.**

## LATE BREAKING NEWS

BSD recently completed the purchase of PerSpective® from CSI and DBIA. Under the previous arrangement, BSD managed the product for the CSI-DBIA joint venture. Subscribers should notice no difference under the new ownership, except that copyright notices have been changed.



## New SpecLink Sections

### 12 9313 (02871) - Bicycle Racks:

Standard steel bicycle parking racks intended for outdoor use. These racks install by either anchor in-ground or by surface flange. Custom designs can be added by referencing a particular manufacturer's model number. This section does not cover bike "banks" or storage lockers. Bicycle racks may qualify for a possible LEED™ credit if specified in conjunction with changing rooms for commercial application. Review LEED™ SS credit 4.2 for more information regarding bike racks and LEED™.

### 07 4646 (07466) - Fiber Cement Siding:

Wood fiber cement siding, including lap, panel, shingle panel, individual shingle, and simulated masonry panel forms; suitable for exterior use on walls only (not roofs).

### 08 4126 (08450) - All-Glass Entrances and Storefronts:

Includes tempered glass with patch and rail fittings; swinging, balanced, and sliding doors. These entrances and storefronts are usually fabricated by glass fabricators using fittings manufactured by others. The manufacturer listings allow specifying of both the fitting manufacturer and the fabricator.

### 09 2700 (09230) - Plaster Fabrications:

Glass-fiber-reinforced gypsum fabrications for installation in conjunction with gypsum board, gypsum plaster, gypsum veneer plaster, and portland cement plaster. Gypsum fabrications are for interior use only. Many manufacturers make the same designs in other materials, such as glass-fiber-reinforced concrete, cast stone,

and fiberglass, which could be used in weather-exposed applications.

### 26 3100 (13630) - Photovoltaic Collectors:

Ready-made, framed modules intended for mounting on poles, racks, or other supports. These are not intended for installation in curtainwall or flat on roofs. Equipment like batteries, inverters, power conditioners, and supplementary generators must be specified in other sections, or added to this section by editing. ■

## SpecLink Revisions

### 09 2116 (09260) - Gypsum Board Assemblies: New UltraSteel™ Studs

There is a revolution happening in interior metal framing! UltraSteel™ framing by Dietrich Metal Framing and Clark Steel Framing is brand new this year. You may have already been approached to specify it — or it may have already have been provided on a project without any request for substitution. Section 09260 - Gypsum Board Assemblies, now includes a standard option for UltraSteel for studs only, treating it as an exception to the traditional ASTM standards, with explicit language and optional submittals. If you don't want to allow this option, you'll need to exclude it — and possibly add language prohibiting it. The reason SpecLink includes it is that UltraSteel has been adopted by Dietrich and Clark, who claim 70 percent of all steel stud business in the U.S. UltraSteel costs the manufacturer less — it uses less steel — so they are going to provide it unless otherwise specified. By the end of 2006, Dietrich will provide only UltraSteel; Clark will be completely converted by mid-2007. You'll find a detailed description of this option in the master notes in Section 09260. ■

## New MasterFormat™ Website

MasterFormat 2004 is being adopted rapidly by the construction industry. Unlike previous editions of MasterFormat, which were published in hard copy and replaced every few years by a new edition, MF04 has been conceived as a dynamic document that will be revised on an ongoing basis. To assist in this effort, CSI has recently established a website, at [www.masterformat.com](http://www.masterformat.com), that will be the official home of the dynamic format. Visitors will be able to keep abreast of changes in MasterFormat, make suggestions for changes, and learn more about who is adopting the standard and how it is being used. Take a look, and visit the site periodically for updated information. BSD is participating in MasterFormat maintenance as a member of the CSI MasterFormat Maintenance Task Team (MFMTT). ■

## Are You Sacrificing Updating for Control?

Maintaining control of your text doesn't mean you have to give up SpecLink's comprehensive updating. Many users assume that in order to completely control what goes in their specifications they have to prevent or avoid updating. This would be true if SpecLink were word processing-based, but it isn't — updating and control are completely compatible when you use SpecLink. We would like to suggest to all our users that *copying* SpecLink master sections to make minor modifications and *importing* whole sections instead of editing the corresponding SpecLink master section are poor practices that will quickly lead to obsolete documents. We strongly urge you to use our sections as the basis for your customized specifications. Why? Because copies of SpecLink master sections DO NOT GET UPDATED when the master section itself is updated.

**1. Are you using your own sections instead of SpecLink's?** It's true that importing existing word processing sections is the easier course of action when initially developing an office master. If you're happy with using SpecLink only as a word processor, OK. But if you wish to take advantage of BSD's updating (not to mention the linking and specifier notes), the better approach is to edit the appropriate SpecLink section to suit your practice, rather than importing whole sections.

See "Updating" on page 7

“TNG” continued from page 1

installed and run on the same computer as the client.

The client installation is downloaded from the Internet by an administrator and placed on a single network server accessible to all users. For the initial install each user simply runs the setup file on the network to install and start the application. Because the software installs to a fixed location in the user’s Documents and Settings directory, there are no questions to be answered during installation or permissions required for completion of the installation.

The client software periodically checks the network installation site for available software updates. When updates become available, and you are ready for them to be installed on user computers, you simply download the update to the same network installation site as the original software. Each client then updates itself in the background.

The server component has a “standard” install program that installs two pieces: one is the BSD server software and the other is the Microsoft SQL Server instance that E works with to save, retrieve, and modify data. The server component, once installed on a single server (or a standalone computer), runs as a “service” on that computer. That is, the component is always running in the background and is automatically restarted when the computer is restarted.

The service runs continually, in part to allow off-hours updating. As BSD publishes new or revised specification sections or other documents, the server component will download them and apply updates on a schedule set by you or an administrator. Projects that have not been locked to prevent further editing or updating will be

marked with available updates when and as the documents become available (when no longer checked out by individual users). As is now the case, the user will have the opportunity to review, and accept or reject updates at the project, document, and individual paragraph levels.

### How the Client Works

As we’ve seen, SpecLink-E is a two-part system. As a user, you work with the client software. When you open the client, it tries to get a list of projects from the server. If the server is unavailable (say you’re on a laptop at home, or the network server is down) it

uses the last list of projects you viewed. The server’s availability is indicated to you by a green “ON” box or a red OFF box on the application status bar (see Figure 2, bottom). The list of projects is

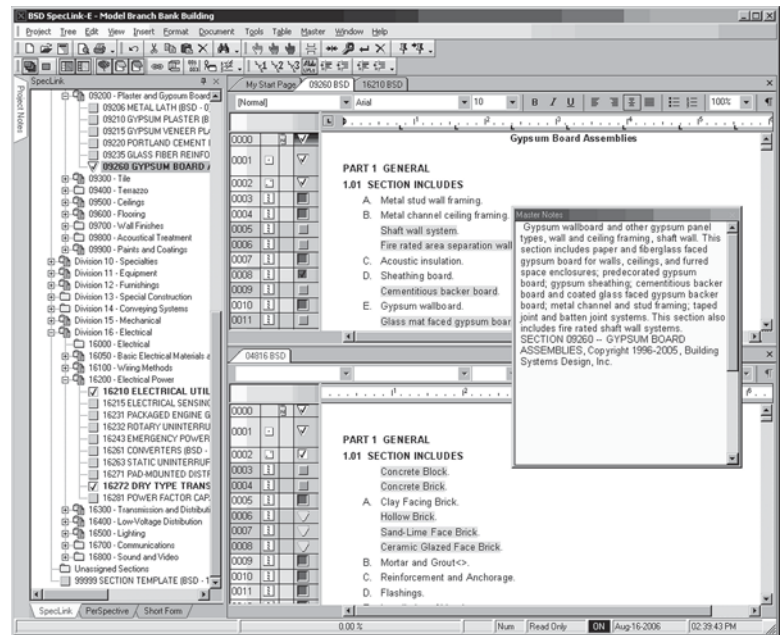


Figure 2

saved on your local computer every time you look at it.

The same is true for each document you try to view. A copy of each document is saved to your local computer to support fast access even when the server is unavailable. If you’ve never looked at a particular project or a particular document, and the server is not available, then that item will be unavailable until you are able to reconnect to the server.

To edit documents you must connect to the server and check them out. However, once you check them out, you can continue to work on them even after you disconnect from the server (for example, to take the laptop on a trip). Concurrent license usage is measured by checked-out documents. That is, when you have one or more documents checked out, you are using a license regardless of whether you are connected to the server or are on the road. In Figure 2, documents that are not checked out display a “Read-Only” sign in the status bar while you are reading them.

Next quarter we’ll talk more about interoperability with CAD software, and how the optional security system can help you manage projects and users, protecting your projects in the process. As I’m sure you can tell, we’re very excited about E. We’re making it easy to use, powerful enough for the largest office and project, but still comfortable and configurable to the smallest office as well. Above all, we’re focusing on your productivity and helping you produce quality specifications with a really intuitive system.

If you have questions or suggestions about the new product or are interested in participating in our beta program downstream, drop a note to our support group at [support@bsdsoftlink.com](mailto:support@bsdsoftlink.com).

## LinkLine

A BSD SoftLink® Publication

Editor: Niki Koplowitz

The LinkLine is published by Building Systems Design, Inc. 3520 Piedmont Road, NE Suite 415 Atlanta, GA 30305

Permission to use excerpts in other publications is granted provided the publisher is notified in advance at 404-365-8900.

BSD SpecLink, BSD CostLink and BSD SoftLink are registered trademarks, and BSD CadLink and BSD LinkMan are all trademarks of Building Systems Design, Inc.

Get the latest on BSD by visiting our web page at [www.bsdssoftlink.com](http://www.bsdssoftlink.com)



## All Products

**Q** Is there a way I can have the software always open the last project I worked on?

**A** Yes, click on Start, Programs, BSD SoftLink Products and then right click on the application. (Alternatively, right click on your shortcut.) Choose Properties and then click on the Shortcut tab. Add a space and /OLP to the end of the Target line. Click on Apply and then OK. Now your last project will be opened automatically when you open the application. This saves time when you are working on only one project for a long time.

**Q** When I create new projects, I always want to save them in a certain folder on my server. Is there a way to make the software save to that folder automatically?

**A** Yes, you can specify a default folder where projects should be saved. To specify a default folder, open the software and close any open projects. From the File menu, choose Registration and Settings or Permissions. Click on the System Settings tab. The fourth field down is called Project Database Location. Click the yellow folder icon to the right of that field and navigate to the folder where you want your new projects to be saved by default. Click OK. The next time you create a new project, if you type the name in the New Project line, the project will save to the specified folder. If you want to save the new project to a different location, click the yellow folder icon to the right of the New Project line and navigate to the correct location.

**Q** I just got a Windows XP computer and I want to install BSD SoftLink products. Do I have to be the Administrator to install?

**A** Yes, for Windows 2000, XP, and NT, you must have Administrator rights to install.

**Q** I want to move the software from one computer to another, but the access key won't work. Why is that?

**A** The access key you received when you installed the software is specific to the computer on which it was installed. To move the software to another computer, call Tech Support at 800-266-7732 for an Unpermit code before you remove the software from the first computer. Before you call, you can have the software already installed on the new computer, and then after you report the Unpermit code, you can get the new key for the new computer.

## SpecLink+ and PerSpective

**Q** We are trying to run SpecLink with the key on our Wide Area Network (WAN) and it is very slow. What can we do to speed it up?

**A** With the Fall release, we have made a change to greatly improve the speed of SpecLink when your access key is on a WAN. Your projects still need to be on your local drive or your Local Area Network, rather than the WAN, but this change will allow you more flexibility in sharing the access key among remote offices that are connected via a WAN. For instructions on the setup, see the Release Notes for this quarter. They are available on the BSD SoftLink Products CD, as well as on our Download Center web page.

**Q** How will the upcoming proposed changes in the CSI SectionFormat affect my SpecLink projects?

**A** We have been involved in the discussions on the proposed changes. The final version is not expected for at least another 6 months, possibly considerably later. When the new document is finalized, we will begin updating SpecLink to correspond. All changes will be accomplished through the normal project updating process — you get to decide which projects you want to update and to what degree — and we would expect to complete the changes over 2 or 3 quarters. In addition, we will sequence the changes to cause as little disruption to your projects as possible and provide a detailed description of the changes so that you can coordinate your

user-added text. For more information on the proposed changes go to [www.csinet.org/sputt](http://www.csinet.org/sputt).

**Q** I'm considering making a checklist document that the project manager will go through to select what is included in a particular job. I will create links from those selections that will activate the appropriate sections in the job. The only problem I have is that the checklist will print when I print the whole project, and it will be listed in my automatic table of contents report. Is there any way to get around this?

**A** You can do this using Non-Printing Text. To add Non-Printing text to your project, just add new paragraphs and apply the NP (non-printing) or NS (non-selectable) tag to the paragraphs that should not print. You can apply the tags to individual paragraphs within sections to keep them from printing. Or, to keep an entire section from printing or being listed in SpecLink's automatic table of contents, apply the NP tag to the title of the section in the Document panel. The NP tags will be applied automatically to the whole section.

## CostLink/AE

**Q** I just purchased CostLink/AE. Is there a tutorial?

**A** Chapter 2 of the User's Manual (available on the CD or on our website), includes a step by step tutorial to get you acquainted with the basics of building an estimate. If you have additional questions, call 800-266-7732 and ask Technical Support.

## CostLink/CM

**Q** I have completed my estimate in CostLink/CM and now I want to send it to the U.S. Army Corps of Engineers. How do I do that?

**A** First read the document called Export to MCACES Format.doc, which is in the CM\_Doc folder of the CD. After making sure the estimate is formatted to suit the MCACES format, choose Export to MCACES Format on the LinkMan menu. It is a good idea to check the MCACES estimate before submitting it.

*Continued on next page*



Continued from previous page

**Q** When I drag and drop tasks from the CostBook into my project, it takes too long. How can I speed that up?

**A** There are several ways to make building your estimate faster. *One* is to be sure you don't have Auto Recalculate Markups on. When this is on, all of your markups get recalculated each time you drop a task into your project. This is turned on and off on the Tools menu. A *second* way to speed up the process is to have your Project and CostBook databases on your local drive, rather than on a file server. If more than one person needs to work in the estimate at the same time, then this is not feasible. A *third* way to speed up drag and drop is to use a "referenced" database. This choice is made in the Summary Info Dialog Box, under the Select Database Methodology area, and should be made before you start adding costs to the estimate. It is possible to use a referenced database while building the estimate and then, when the estimate is complete, you can choose to copy all the resources into your project at one time.

**Q** I have a client that requires Uniform to start with but then later he wants it in CSI MasterFormat? Can I do that?

**A** CostLink CM can do that for you automatically. Start your project using one of the Uniform templates and complete the estimate. When you need to see the project in CSI MasterFormat, change your view drop down to Project CSI view. Go to the LinkMan menu to assign tasks by hierarchy. Use the default setting and your tasks will be sorted into the appropriate CSI folder (assuming that their Source Tag starts with the appropriate two character CSI code.) After this, you can choose to print your reports by either Uniform or CSI. ■

## More questions?

### Contact BSD Technical Support:

Toll Free: 800-266-7732

In Atlanta: 404-365-9226

Email: [support@bsdsoftlink.com](mailto:support@bsdsoftlink.com)

"Updating" continued from page 5

**2. Are you making multiple versions of the same section?** An example taken from an actual project is described as "this section has been pre-edited to apply only to interior masonry work limited to modifying existing CMU assemblies. Use.... for more substantial projects." The user apparently felt he needed two different versions in their office master and didn't want to make a separate office master project file, which would be an alternative that wouldn't require copying the section. A better use of SpecLink would be to use the NON-PRINTING CHECKLIST feature. In the case cited, it would be relatively simple to add a non-printing option to the beginning of the section for "ONLY modification of existing interior CMU" and add links to pre-edit the section to that scope. Then the same section could be used for both the limited scope and the full scope.

**3. Are you afraid of updates?** Copying the section certainly does prevent updating completely! But there is no need to fear SpecLink updates. *Our updating process won't change the text of a project that is underway.* Updates will never overwrite customized text under any circumstances. In addition, updates will never change text, delete text, or add text – unless you, the user, specifically choose to have that happen. You can also choose whether to update a particular project or not. Many users update their office master project each quarter but don't update the projects made from it -- this is a reasonable compromise. Wouldn't you rather keep your office master up to date so all your future projects will be current?

**4. Are you copying to change the section number?** The only plausible reason we have found for doing this is that the section is referenced by documents under the control of others. Because such a copied section cannot be updated automatically, however, you will probably find that the trade-off is a poor one. ■

## BSD Fall Conference Participation

BSD will take part in a number of conferences and seminars this fall. We welcome our subscribers to these events and hope to have the opportunity to speak with you!

### September

September 1: Stone Seminar in Honolulu, Hawaii.

½ day event provides 4.5 LUs on stone tile selection and installation; sign up online: [www.stoneseminar.com](http://www.stoneseminar.com)

September 19-22: Stone Seminars in Grapevine, Austin, San Antonio, and Houston.

½ day event provides 4.5 LUs on stone tile selection and installation; sign up online: [www.stoneseminar.com](http://www.stoneseminar.com)

September 28-October 1: Combined Southeast and Middle Atlantic CSI Regions Fall Conference in Washington, D.C.

Four-day event offers many educational and sightseeing opportunities:  
[www.csi-building-diplomacy2006.org](http://www.csi-building-diplomacy2006.org)

### October

October 16-18: CSI Academies in Snowbird, Utah.

Three-day event and over 30 sessions offer three education tracks, each with 16 LUs: [www.csinet.org](http://www.csinet.org)

October 18-20: Stone Seminars in Boise, Salt Lake City, and Denver.

½ day event provides 4.5 LUs on stone tile selection and installation; sign up online: [www.stoneseminar.com](http://www.stoneseminar.com)

October 18-20: 2006 Professional Design-Build Conference and Expo in Nashville.

Three days of educational events and over 200 exhibitors:  
[www.designbuillexpo.com](http://www.designbuillexpo.com)

### November

November Dates to be Announced: Stone Seminars in Birmingham, Atlanta, and Charlotte.

½ day event provides 4.5 LUs on stone tile selection and installation; sign up online: [www.stoneseminar.com](http://www.stoneseminar.com)

November 15-17: USGBC Greenbuild International Conference and Expo in Denver.

Three-day event offers many educational opportunities and hundreds of exhibitors:  
[www.greenbuillexpo.org](http://www.greenbuillexpo.org)

# Training Schedule

## The BSD SpecLink+ Workshop

The BSD SpecLink+ Workshop consists of two one-day workshops. The first day is devoted to learning the basics of SpecLink+, including how to navigate within the software, start a new project, edit sections, understand how the links and choices work, and how to format, print and export the final document. It is designed for new users. The second day is designed for those who want to learn how to create and maintain their own office master. This day covers the concepts of an office master, how to customize your master by adding choices, links, and tags, as well as creating your own checklists. Users must already be familiar with the basics of SpecLink+ to attend the second day.

**BSD SpecLink+**  
**Either Day\* \$495**  
**Both Days\* \$895**

September 12 - 13  
October 17 - 18  
December 5 - 6

**AIA Members:** We will report your course completion for 7 or 14 Continuing Education Units

**CSI Members:** Submit Course Completion Certificate for 7 or 14 Education Contact Hours (ECHs) toward your CCS, CCCA, or CCPR Certification renewal

\* Class starts at 9:00 AM and ends at 5 PM.

**BSD CostLink/CM**  
**3 days\* \$1295**

Scheduled on a demand basis.  
Call 888-273-7638.

**AIA Members:** Submit Course Completion Certificate for 24 Continuing Education Units

**CSI Members:** Submit Course Completion Certificate for 24 Education Contact Hours (ECHs) toward your CCS, CCCA, or CCPR Certification renewal

\* Class starts at 9:00 AM and ends at 5 PM.

View BSD class schedules on our website! Go to [www.bsdssoftlink.com](http://www.bsdssoftlink.com) and click the Training link. Get directions & information on travel, hotels, & Atlanta!



## LinkLine

PRESORTED  
STANDARD  
U.S. POSTAGE  
PAID  
ATLANTA, GA  
PERMIT NO. 6613

3520 Piedmont Road, NE  
Suite 415  
Atlanta, GA 30305