

# Model Eclipse Supra Fit Instruction Manual

Congratulations on purchasing your Eclipse Personal Media Player!  
To get the most out of your purchase, please take the time to carefully read through this manual.

## Foreword

If any problems occur while using your Eclipse, please feel free to contact Mach Speed technical support at 580-272-0035, or send an email to [mssupport@machspeed.com](mailto:mssupport@machspeed.com).

Thank you for your support and cooperation!

Mach Speed Technologies bears no responsibility for any damage or loss of personal data due to misuse of software and/or hardware, damage to the player caused by human factors, replacement of battery, or other unforeseen circumstances. To prevent loss of your data, please backup your data regularly.

Information in the manual is subject to change without notice and is subject to copyright protection. Copying or

otherwise reproducing this material without prior written consent is prohibited.

Due to Firmware changes, some of the pictures and functions described in this manual may not be the same as are included with your player.

Do not dispose of this product in fire. Batteries inside this product may explode or leak.

**Note:**

- The playback times listed refer to the maximum playback times possible, while using the best power savings. The actual playback time may differ as adjustments to screen brightness, power savings modes, volume, etc., are made.
- There are many brands of Micro SD cards on the market, using different quality and speed standards. Therefore, we are unable to guarantee that our product will be compatible with all types or brands of Micro SD cards, but it will be compatible with those Micro SD cards with mainstream specifications on the market, and

we will constantly strive to provide the largest selection of cards possible.

- As parameters such as formats, bitrate, codecs, frame rates, and resolutions differ, the player will not be compatible with all listed files. If you are experiencing issues playing your files on this player, we recommend using a supported conversion tool to reconvert your file to the specifications of the device.

### **Caution**

Modifications not approved by the party responsible for compliance could void the user's authority to operate the equipment.

NOTE- This equipment has been tested and found to comply with the limits for Class B Digital device, pursuant to part 15 of the FCC rules. These limits are designed to provide reasonable protection against harmful interference in a residential installation. This equipment generate, uses and can radiate radio frequency energy and, if not installed and used in accordance with the instructions, may cause harmful interference to radio or telephone reception, which can be determined by

turning the equipment off and on. The user is encouraged to try to correct the interference by one or more of the following measures:

Reorient or relocate the receiving antenna.

Increase the separation between the equipment and the receiver.

Connect the equipment to an outlet on a circuit different from that to which the receiver is connected.

Consult the dealer or an experienced radio/TV technician for help.

## **Caution**

- Do not use the player in exceptionally cold or hot, dusty, damp or dry environments.
- Do not drop, strike, or throw your player. Physical damage to your player will void ALL warranties.

Please charge your battery when:

- Battery power icon shows an empty icon.
- The system automatically shuts down and the power is soon off when you switch on the unit once again.
- There is no response if you tap an icon or press a button
- Please always follow the correct disconnect

procedures for your operating system. Do not disconnect power abruptly when the player is being formatted, in the process of uploading or downloading files. Otherwise it may lead to file corruption, firmware failure, and even hardware damage.

- We are not liable for any loss of data stored on this device.
- Please do not dismantle this player. Any disassembly not done by an authorized technician will void ALL warranties.

This product and manual are subject to change without subject to notice.

## **Basic Features**

- Touch Screen Operating system for ease of use
- 240\*320, 26K color high speed TFT screen
- Built-in 1.3MP digital camera
- Music player: compatible with MP3 and WAV formats
- Picture browser: for JPEG, BMP, GIF, PNG and TIF formats
- Video player: for playing video of AVI, 3GP and FLV formats
- USB2.0 high speed transmission

## **Basic Operation**





### **Power On**

Set the **Power** switch and hold to the ON/OFF position for several minutes to start the unit.

### **Power Off**

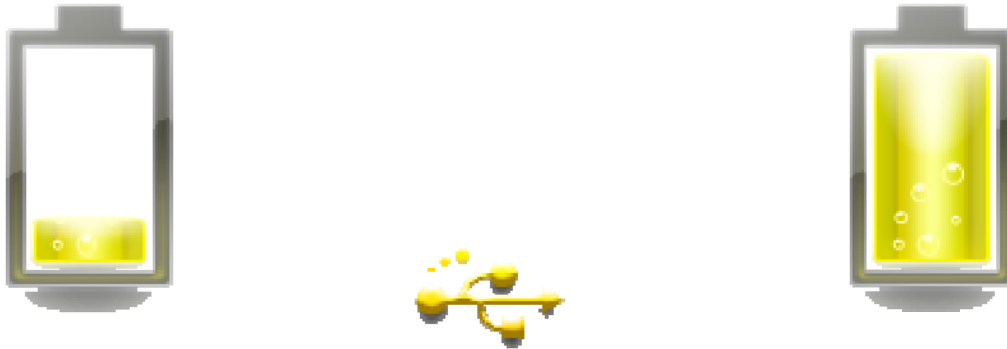
Press and hold the Power button to the ON/OFF position for several minutes; 2.long pressing the M button.

### **Volume Adjustment**

In Music or FM radio mode, touch the dot above  and if using your finger, keep touching to the right of the  dot to increase volume. Touch to the left of the  dot to decrease volume (Or, with the stylus, drag the volume icon). In Video mode touch the  to enter, and then do the same steps as Music or FM radio, above.

## Charging

**To charge the player, simply connect it to a powered USB port, or external AC adapter. If you choose to use a third party adapter, please ensure that it is 5V and between 350 and 1000mA, or 1amp Low Power**



When battery power is low, the player will prompt you, power off, and enter Standby mode automatically. Do not try to turn on the unit. You must charge again before using.

Charger current specification recommended: 400-500mA.

### **Inserting and removing the Micro SD card**

**Inserting:** Ensure that the player is powered off, and disconnected from the computer. Hold the Micro SD card face up (side with words aligned in the opposite direction of the display screen), and slide the card into the socket on the player, slightly past flush. When you hear the card click into place, you can access the card.

**Removing:** Ensure that the player is powered off, and push the SD card just past flush. When you hear the click, release pressure, and the card will slide out.

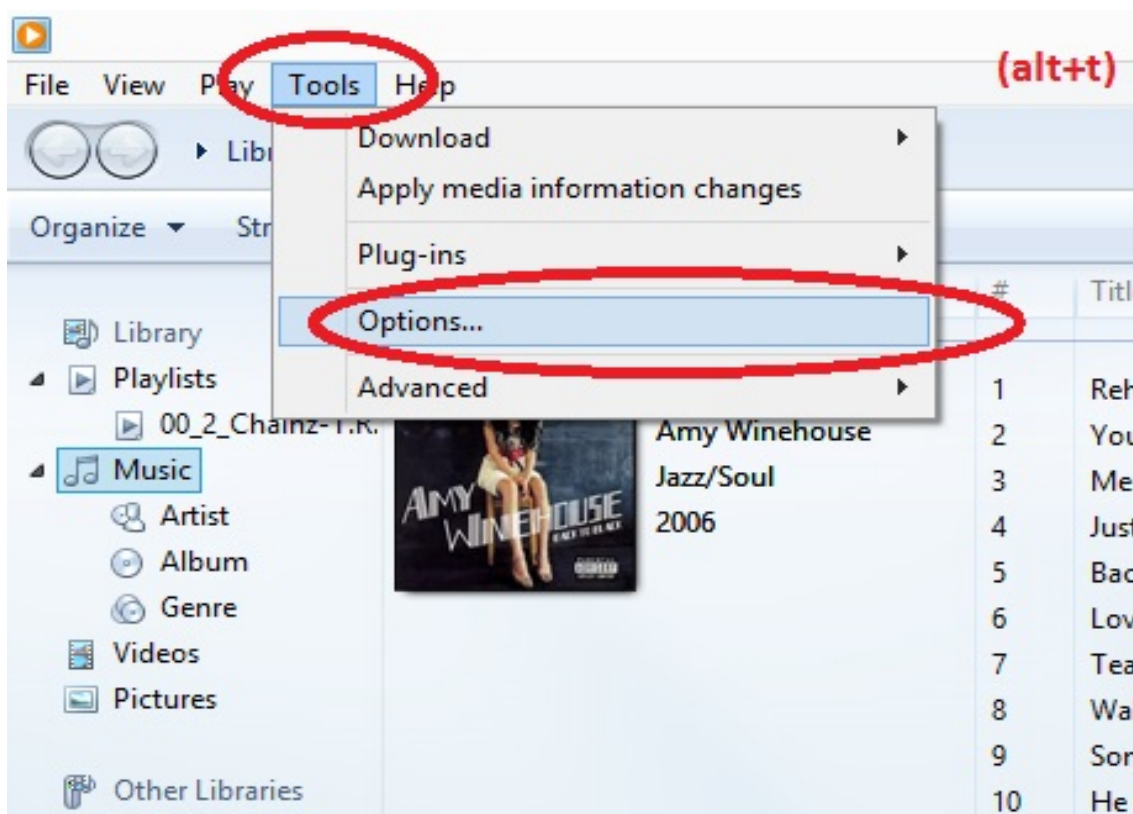
**Caution:** Please ensure that the power is off when you connect or disconnect your SD card, or damage may occur to the player or your card.

## Loading files

### Using Windows Media Player

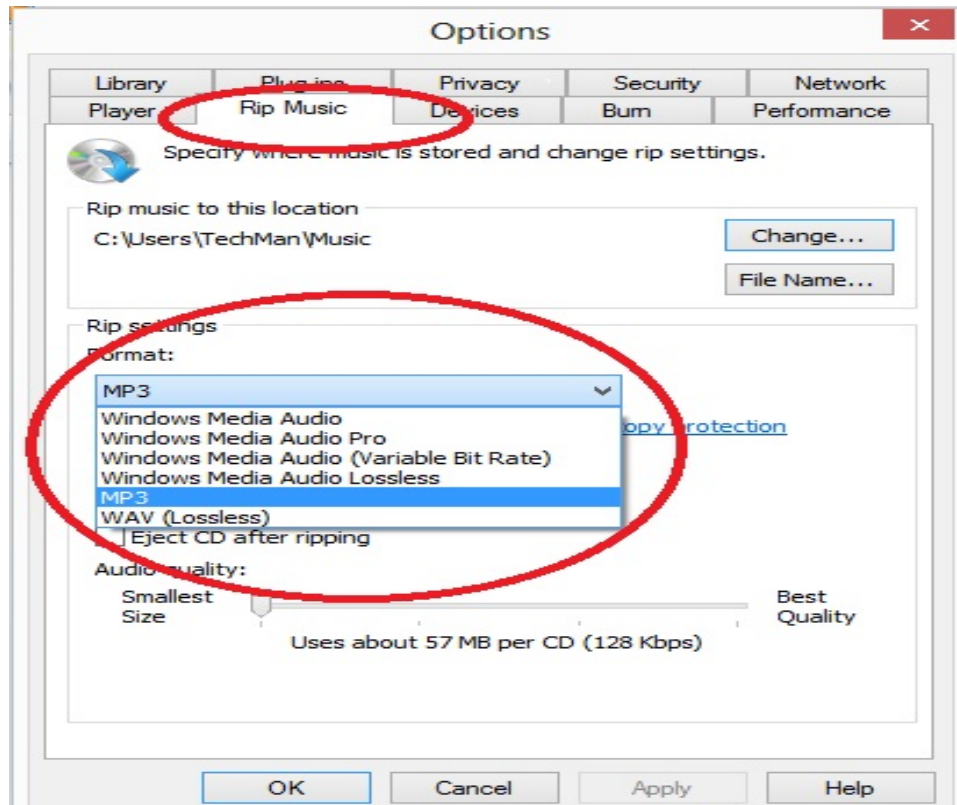
Before ripping your CD to your computer using your Windows Media Player there are a couple steps we can go through to make sure that you are ripping them to the compatible format for your Eclipse/Trio Player.

1. Open your Windows Media Player (these steps will work on any version after WMP 9).
2. Click on Tools at the top of your screen. (If you do not see tools hold down the ALT button and tap T).





3. Choose Options. This will pull up a menu with tabs. Click on the RIP MUSIC tab .



4. To change the format click on the Format drop down and choose MP3.

5. Click on Apply or OK to save.

**Now That you have the necessary format required for your player you can insert the CD that you want to rip.**

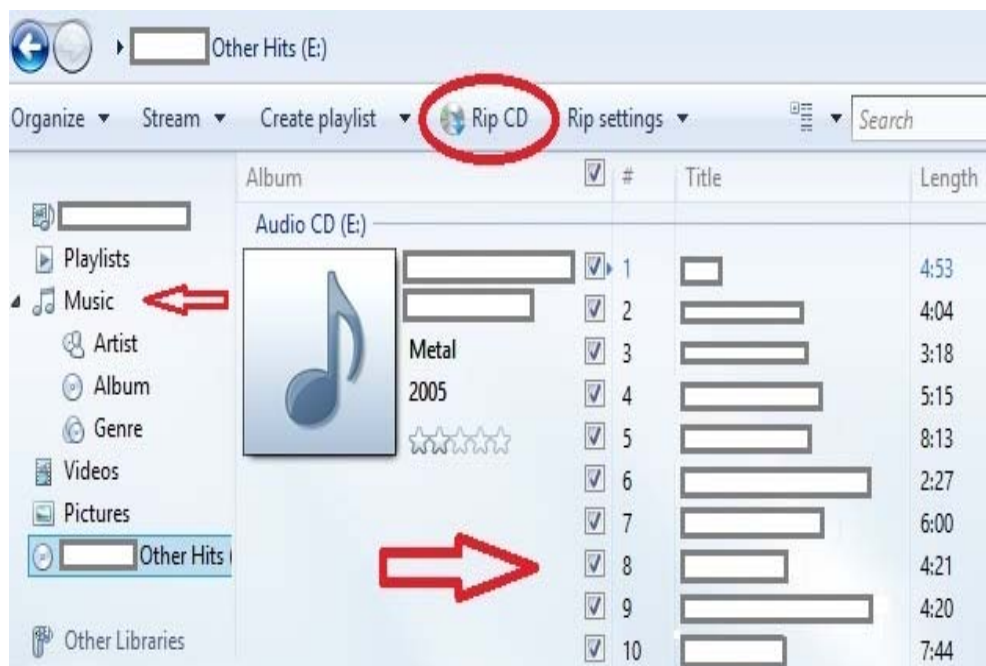
1. Once CD is inserted you will see a screen that has all of your tracks checked. (If you do not see this click on the RIP tab at the top of your screen) .

2. Next, if the rip process doesn't automatically start for you, click on the button at the top of your window that says Rip CD.
3. Once this is finished ripping click on Music on the left hand side of your screen to review your installed albums.

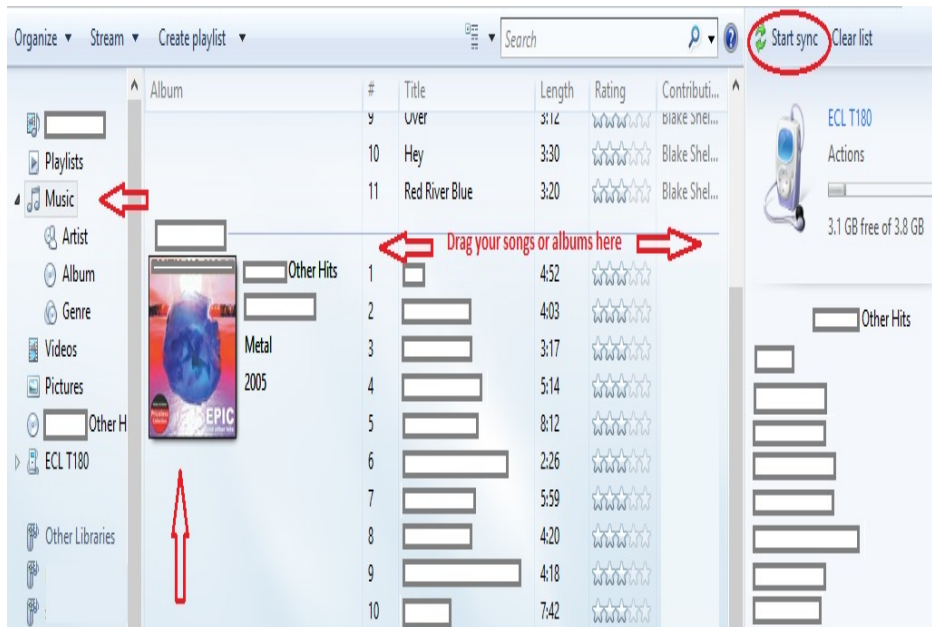
**Your music is now ready to be copied over to your Eclipse/Trio MP3 player.**

1. Using your USB cable, plug in your Eclipse/Trio MP3 player into your computer. (You may get a pop up screen asking what you want to do with this, go ahead and close that screen).

2. In your Windows Media Player you will see an area on the right hand side of your screen that says Sync List. You can drag your desired music into the Sync List and drop it in.



3. Once you have the MP3's that you want on your player dragged to your Sync List click on the Start Sync button above the name of the player you have plugged in.



4. Do not unplug the device until it shows that it is 100% completed.

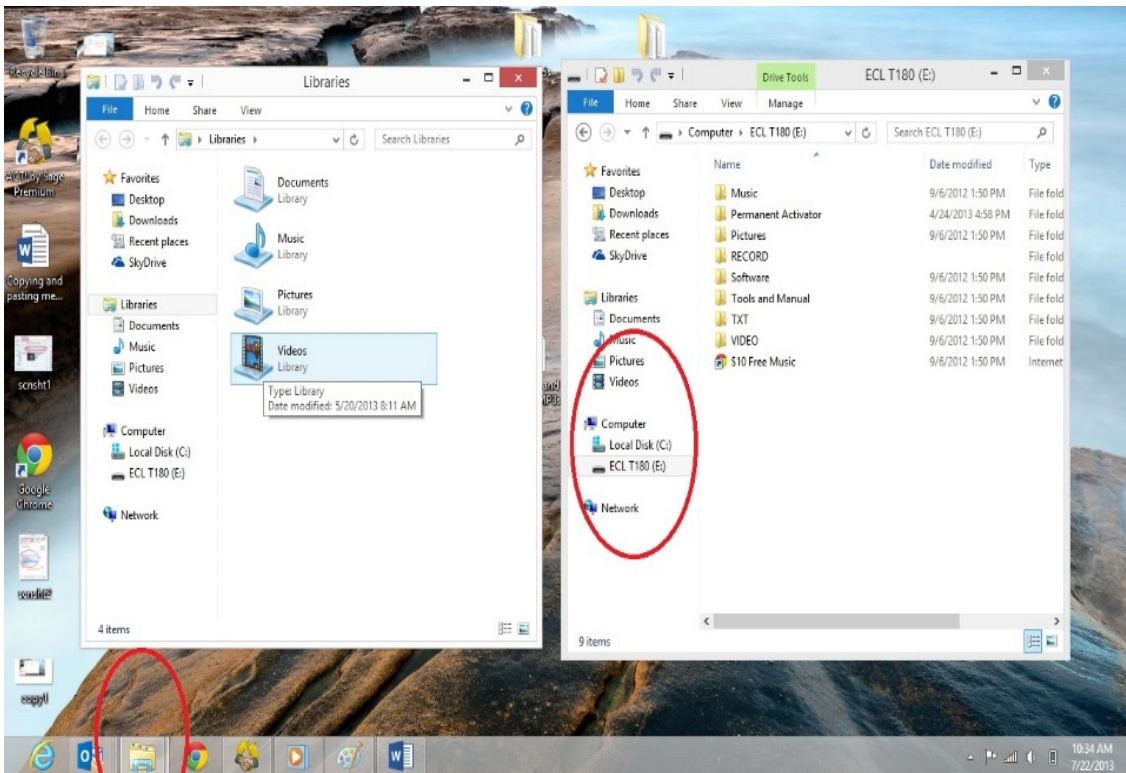
At this point your music will have been successfully loaded to your device. Play and Enjoy!

## Copy and Paste, Windows 8

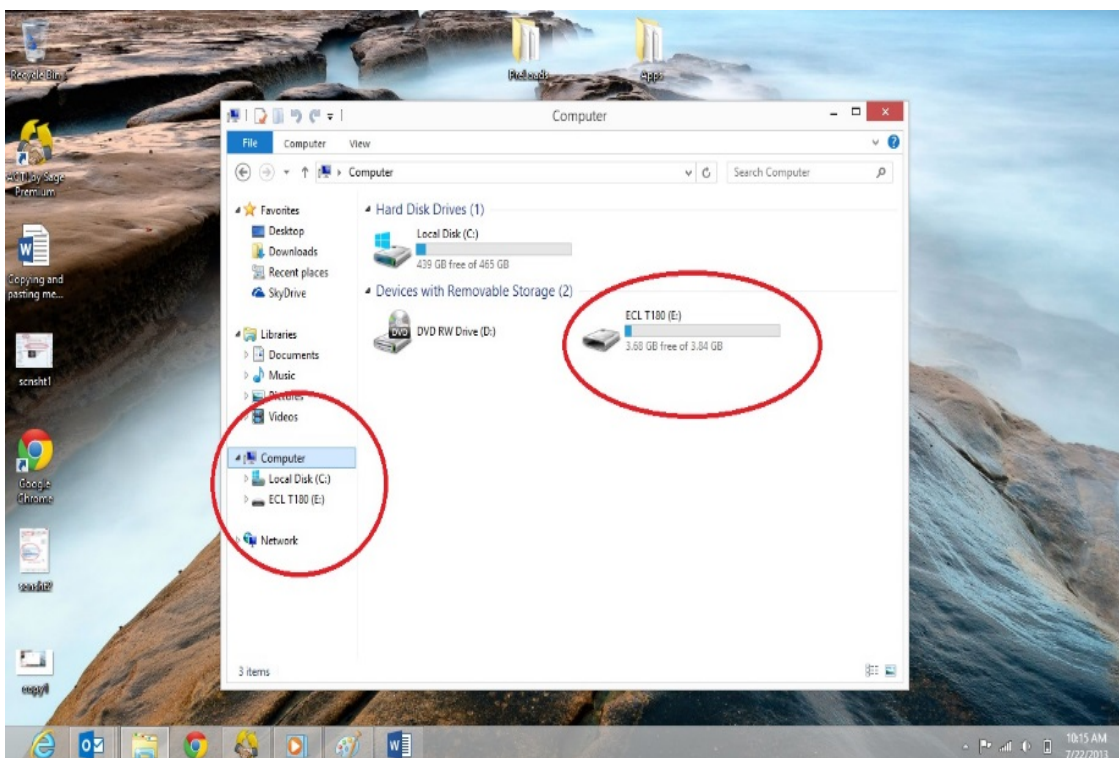
With this simple walkthrough you will know how to easily add music and pictures to your Eclipse/Trio device using your Windows 8 computer.

6. Plug your device into your computer using the USB cable that came with your device and go to your desktop.

If you are not already on your desktop, you should see an option for desktop on the bottom left of your menu.



7. You should see a pop up asking what you want to do with the drive and should see an option to open files to view folder. If you don't get this prompt from your desktop, corner of your screen. This will pull up your computers directory of drives and folders.



8. Click on computer. You will see a driver category listed as Devices with Removable storage. Your drive for your player will be listed here.

9. To open the drive just double click on it and open the music or pictures folder.

Now with this window open you are now able to locate the supported files on your computer to either drag-and-drop or copy-and-paste to your Eclipse/Trio device. We're going to use pictures as an example.

4. At the top of the screen you have open click on File and "Open New Window". This will stack two Explorer windows with the same content.

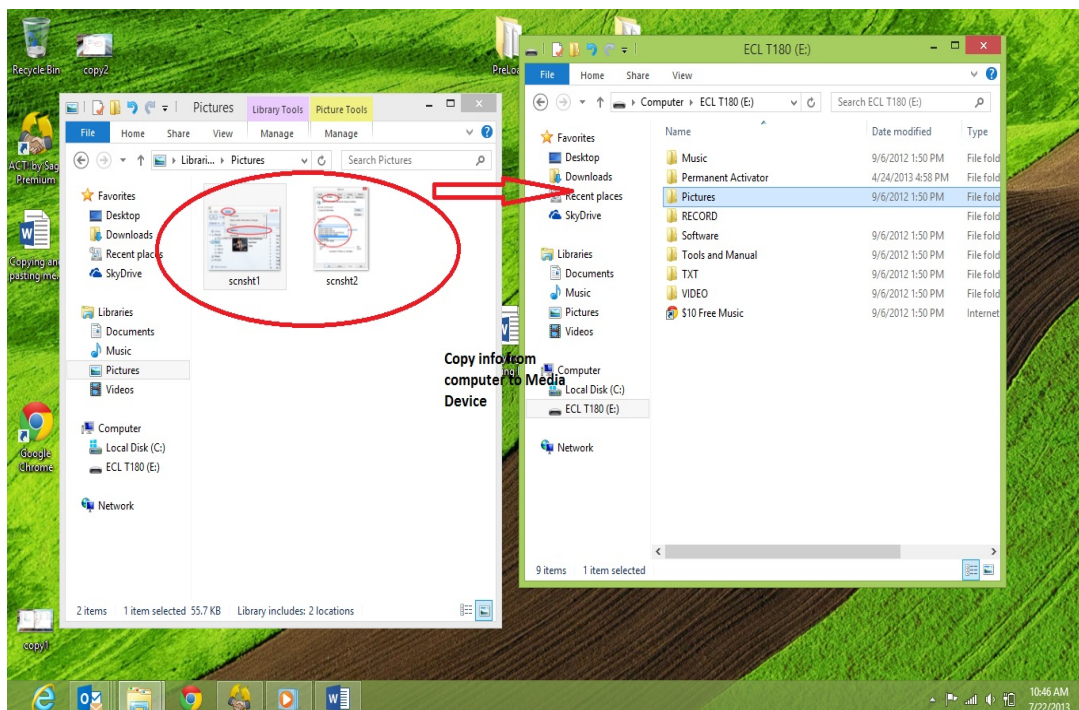
5. From this point having your windows side by side would make this a lot easier. You can either drag your windows apart or you can right click on your task bar and choose "Show Windows Side-by-Side".

6. In the second window click on the Pictures folder listed on the left hand side. You should be able to find any pictures saved to your computer listed in here.

. Locate the file you want on your device and right click and choose copy. At this point you can go into the first

window opened and, in the Pictures folder there, right click and go to paste. Your picture should go right to your player.

8. An easier route would be to just click down and hold on the file you want on your device and drag it to the other window and drop it in. (Let go of click).

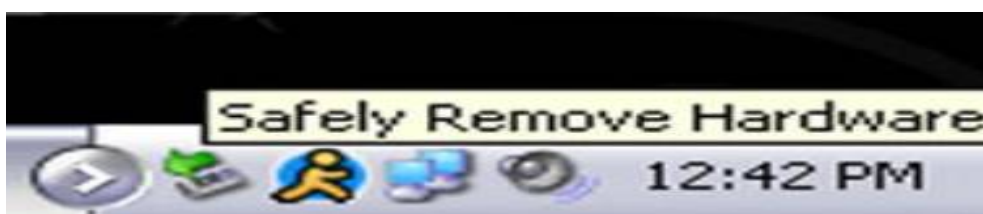


Any of the supported media on your computer can be copied over to your device, in the appropriate folders, in the same manner. Once copied over just unplug and enjoy!

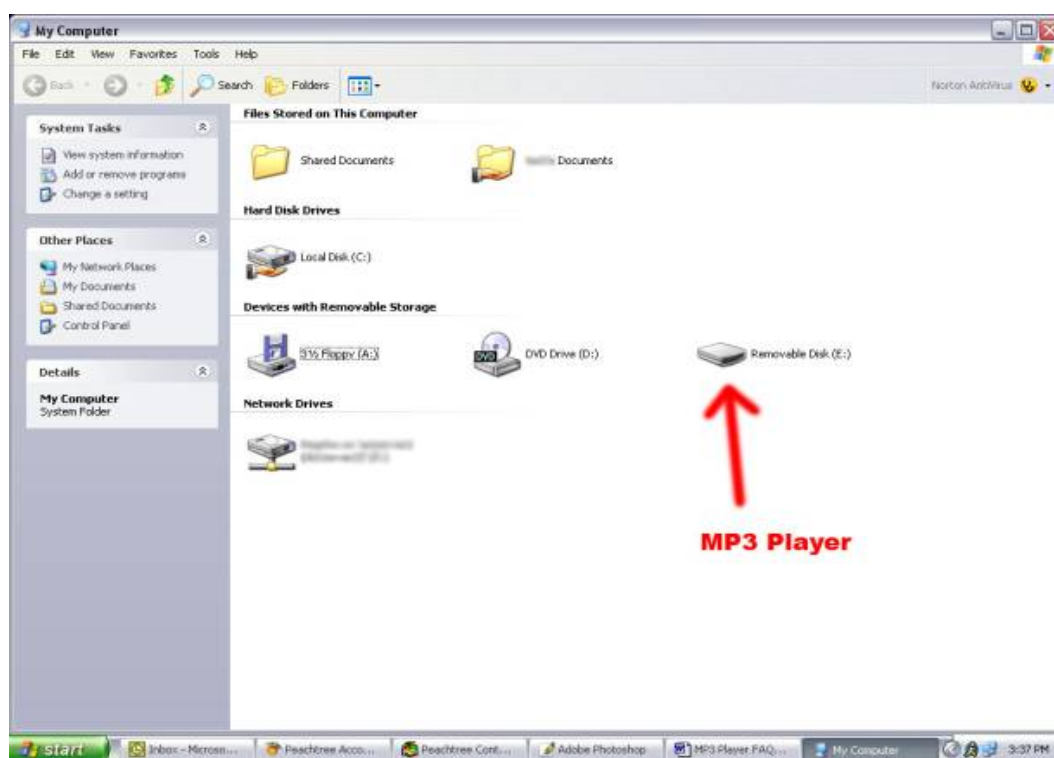
## Copy and Paste, Windows XP/7

Note-This alternate method is used to load videos, pictures, and ebook files as well as audio files.

1. Connect the MP3 player to a working USB port.
2. When the unit is connected to your computer, it will create a gray and green icon in the system tray (lower right hand corner of your desktop). The icon will be called safely remove hardware.



3. Go to the “My Computer” section of your computer. In there you will find a section called “devices with removable storage”.



4. Locate the drive created by the unit, generally just called Removable Disk, with a letter in Parenthesis. Drive letters vary depending on your system configuration.

5. Open the drive by either double left clicking on the drive itself, or by right clicking to open the option menu then left click on the desired drive.



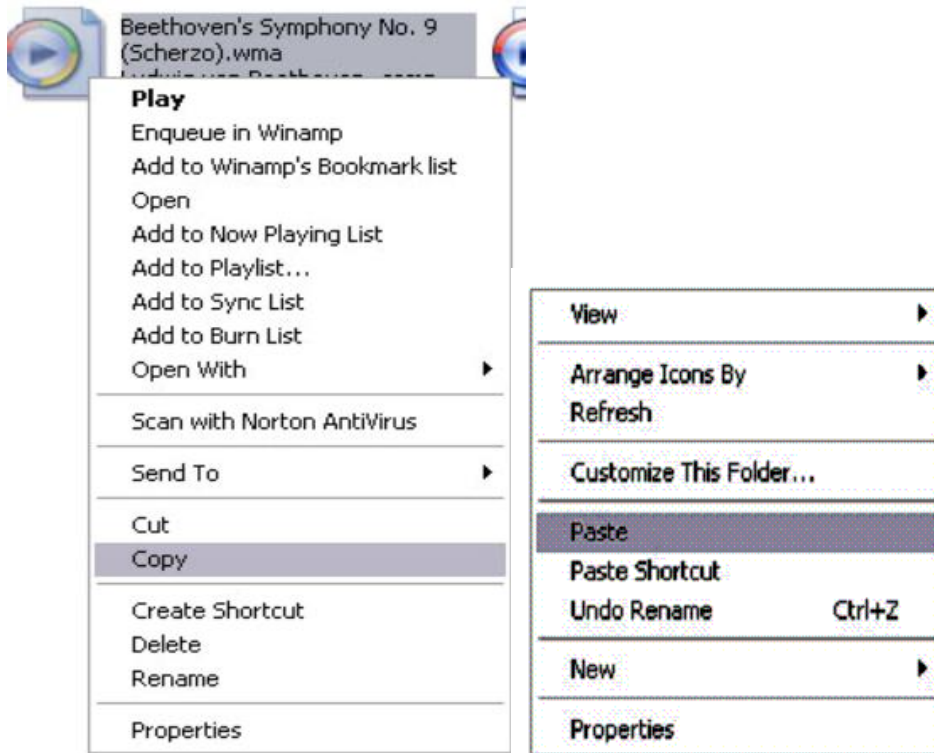
6. Locate the music stored on your computer. Generally this is stored in the “My Music” folder of your computer.



NOTE: if you are unable to locate the music on your computer, click on start, search, files and folders, then search for “\*.MP3\*”.



7. Once you have located the song files, you can right click on the song itself, and select “copy”. Open the removable disk drive, right click on in the empty space, and select Paste. This will transfer the song on to your player.

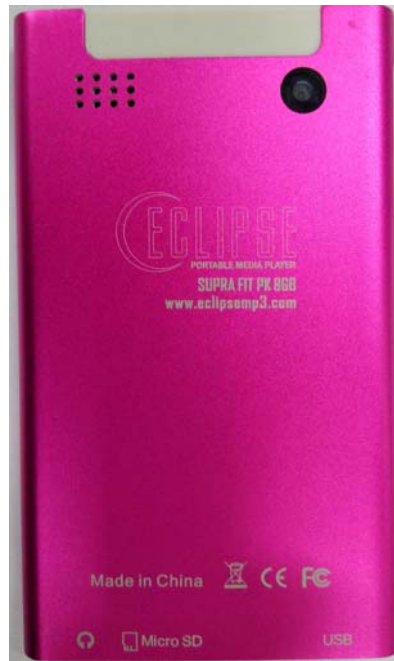


8. Repeat step 7 for as many songs as you want to copy on to the unit.

### **NOTE: MAC Computers**


When connected to your MAC computer, the device will act as a removable drive. Simply drag your files to the device.

# Know Your Player




## Main Menu Interface

This player provides a touch screen Operating System for direct operation. The main menu interface is shown in the picture below:

1. The battery is shown on the upper right corner of the main menu interface  .
2. Under the main menu interface, choose and touch the icon on the screen, and the player will enter the selected mode.



3. After the player enters a mode, touch the  icon on the bottom right corner to return to the main menu.



## Music Mode





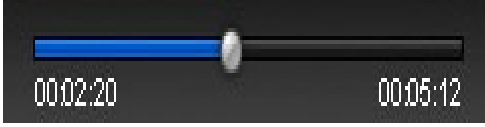


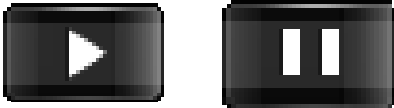

Plug the earphones into headphone jack.

In the main interface, touch the “Music” icon to enter music mode.

## Music Interface Description

Compatible with MP3 and WAV formats.






Button /icon	Description
	Display mode.
	Playing mode.
	Playing rating mode.
	Playing EQ style.
	Song playing progress bar. Drag the bar to adjust playing progress.
	Volume bar. Drag the bar to adjust volume.
	Touch it to skip to previous song, long touch for fast rewind.
	Touch the play icon (first icon), and the button will be changed to pause icon (second one).
	Touch it to skip to the next song, long touch for fast forward.

## Music Setting Interface

Touch one of the 4 buttons at the bottom of the interface

to enable an appropriate function.

Icon	Description
	Back to the main menu.
	Touch Settings to choose: Select EQ, Play Mode, Display mode, Add to my play list, Set rating, Add tag, Delete, Advanced, Information.
	Return to the previous interface.

## Lyrics Display

The player is compatible with lyrics files of “\*.LRC” format and enables playing songs with synchronous lyrics. The name of the lyrics file should be the same as that of the song file. When there are the lyrics with the same name of the song being played under the play list directory, the lyrics of the song will be displayed on the playing interface.



## Video Mode






Video mode will allow you to watch your movie and video files loaded on the player.



- Note- this player will playback files which are in AVI (XVID), WMV (non encrypted), and FLV formats. If

you are having a hard time viewing your video files, please convert them using the AVI conversion tool included with the player.



If you want to delete the video, touch “delete” option. A box will open. Click on the word “yes” and the video will be removed from your mp3 player.

Button	Description
	Return to the previous interface.
	Play: touch and it will change to pause button  , and touch again to continue playing.
	Touch it and the Volume bar will pop out at the bottom. Drag the bar to adjust volume.
	Return to main menu.

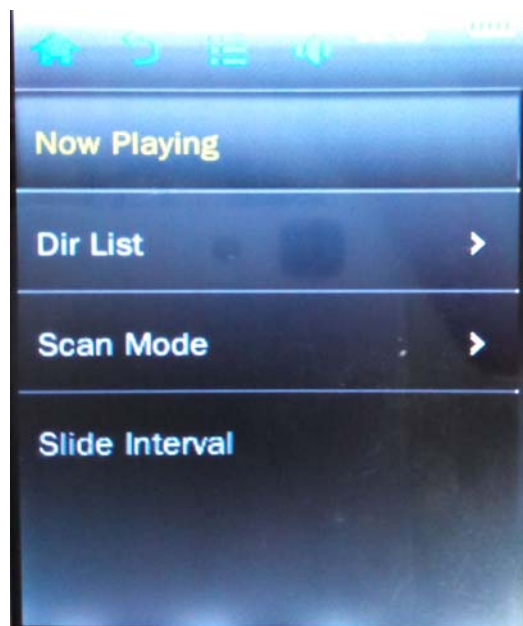
	touch and it will change to the previous one.
	touch and it will change to the next one.

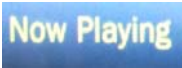


## Photo Mode

Photo mode will allow you to view your image files, whether they are photos, computer generated images, album art, etc.

**Note-** This player will only display images in the following formats: JPEG, BMP, GIF, PNG, and TIFF. We recommend converting your files to 320x240 or 240x320 dimensions before loading them to the player for optimum quality.




Touch  .









2. Touch the thumbnail twice to browse pictures. Touch the picture, and the icons will appear automatically at the bottom of the screen.



Button	Description
	Return to the previous interface.

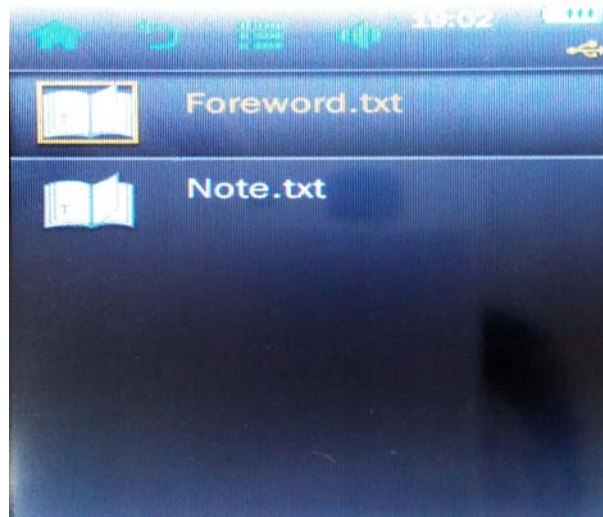
	Set up Rotate ,Zoom ,Slide Interval ,Set as Desktop,Delete.
	Previous picture
	Next picture
	Return to the main menu.

If you want to delete the photo, hit “delete” button or right click on the photo. A box will open. Click on the word “yes” and the photo will be removed from your MP3 player.

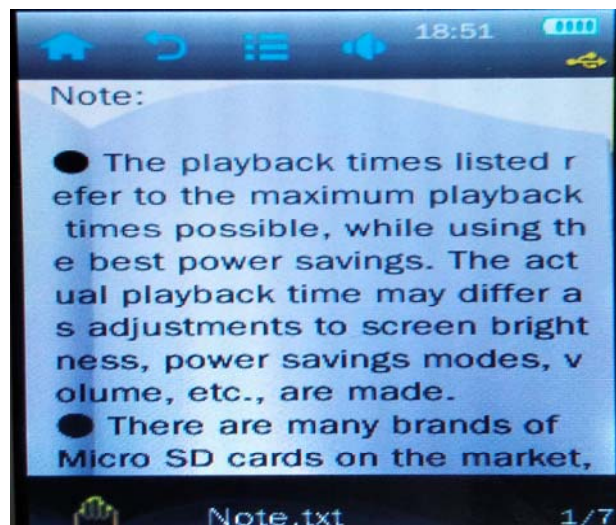





## **E-book Mode**

Note- This player will display only Ebook and text files which are in .txt format. You can create these files using your windows or “WordPad” programs.



1. Select a TXT file to enter Ebook browser interface.



Button /Icon	Description
	Return to the main menu.
	Return to the previous interface.
	Setting mode : Skip to ,Auto reading speed,Add tag,Font size,font color,and delete file.

If you want to delete the txt file, hit “delete file” button or right click on the file. A box will open. Click on the word “Yes” and the txt will be removed from your player.








## Camera

The player comes with a 1.3MP digital camera built in which will allow you to snap pictures, record video and even act as a webcam!

### Camera Interface








1.  Return to the previous interface.
2.  Space- Shows the remaining number of pictures you can take in your current settings, until the memory is full.
3.  Swap- Swap between Camera and video recorder mode.

4.  Resolution- Allows you to adjust the resolution of pictures you take. Options are 1280x960, 1024x768, 640x480, 320x240. Default is 1280x960.
5.  Snap- Briefly touch the Camera icon to take pictures.

## Video Record



1.  Return to the previous interface.
2.  Lighting- Allows you to adjust for lighting, choose from Auto, Daylight, and Cloudy or Inside.
3.  Swap- Swap between video recorder and Camera mode.
4.  Video Mode- Takes you to video mode, and allows you to browse videos you have taken.
5.  Resolution- Allows you to change the size of video files you record. 224x176, 176x144, 320x240. Default is 320x240.



6.  Record- Tap the Video Record icon to start recording.

## PC Camera

When the player is powered on, select PC camera, and connects the device to your computer's USB port. Your computer will run a setup and install the device as a PC camera, which will allow you to use the device as a webcam.



## Calendar





This simply displays a calendar on the screen of the player. Tapping the  or  icons will adjust which month or year you are looking at. You can tap a date on the calendar to turn the date blue.





## Recorder

Touch Recorder icon to enter Recorder mode.



<b>Button /Icon</b>	<b>Description</b>
	Stop - touch it and it will change to play icon  to enter recording mode.
	Return to the previous interface.
	Setting mode : Record format, Record Quality, Record Gain, Record mode, and Save path.

Touch  to go back to the Application menu. Touch  to return to the Main Menu.

## **Notebook**

In the Application menu, touch “Notebook” icon to enter the notebook mode, then you can write down the note. When you have finished, touch the “OK” icon to save the file. Then on the notebook content, you can scan your note.

## **Application**

The Applications item on the main menu allows you to access one of several “extra” applications on the player. Please note that applications may be added or removed as firmware changes on the player, so not all items shown in this section may be available for use, or some

applications not described in this manual may be available on your player. For instruction on using any application loaded to the player which is not described in the manual, please contact our technicians at 580- 272-0035.



## **Calculator**

This calculator will act exactly as a standard calculator. Simply tap the icons.





## **Setting**

In the main interface, touch the “Setting” icon to enter into different modes.

## **Player Information**

Touch the “Player” icon for relevant read-only product information.

## **Set Time**

This will allow you to adjust the date and time, which is displayed on most screens of the player. Setting the 24 hour time to on or off will change the way time is displayed, for example, 3PM will display as 15:00 if set to on, and 3:00 if set to off. Tap the  or  icons next





to each item (year/month/day/etc) to adjust the value of that item.

## **Language**

Tap one of 11 languages to display items in that language.

## **Display**

Display allows you to adjust your screen brightness and backlight time.

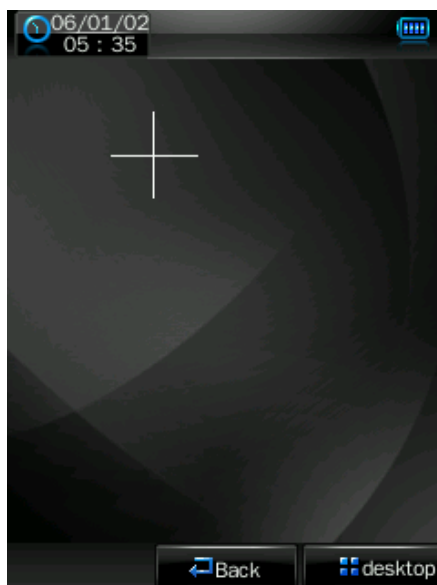
1. Back Light Time- Allows you to adjust the length of time that the backlight will stay lit when the player is idle. Tap the  or  icons to adjust this item.
2. Brightness- Allows you to adjust the screen brightness. Tap the numbered icons to adjust your screen brightness, from 1-5. 5 is the brightest setting, and will use the most power.

**NOTE- Brightness setting 1 will make your screen exceedingly hard to view, and may make readjusting your settings necessary! Please exercise extreme caution when adjusting your brightness!!**



## **Calibrate**

This setting will allow you to calibrate the screen of your player to increase the accuracy of the touch screen. The screen comes pre calibrated, but you can calibrate it to

your specific touch using this feature. Just tap the cross hair in the middle to calibrate the device...



## **Power off**

This option allows you to set a timer to automatically power the player off. This setting is great if you plan on dozing off to some music, but don't want to drain the battery of your device. Tap the  or  icons to adjust this item.

## **Default Settings**

This option will allow you to restore the player to factory defaults.

## **Upgrade**

This option will allow you to update the firmware on the player. Firmware updates will be released at [www.machspeer.com](http://www.machspeer.com). Please check there regularly for

updates.

## **Other settings**

To touch the other settings in the system setting interface to enter other setting mode to set the format main disk or format card.

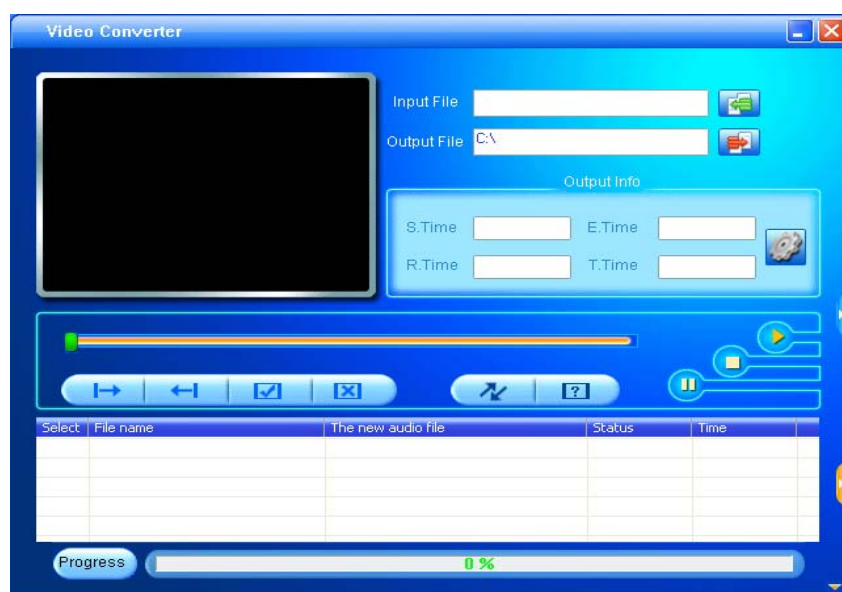
## **Video Conversion**



If your video files will not play on your Trio player, you can convert them using the conversion tool which is included with the device. To do so, you will need to first install the software.

When you connect the player to your computer, it will act as a removable disk drive. Open the drive, as described in the Copy and Paste section of the manual. Inside, there is a folder called “Tools & Manual”. Open this folder, and then the “Tools” folder. Inside is a Setup.exe application. Run this file and follow the onscreen instructions. Please note that depending on your OS version and security settings you may need to right click on the file and select “run as administrator”.

Once installed, you will have an item called “Media

Player Utilities” in your programs list. Select this item and then “Video Converter” or “AVI Converter”.



Once the conversion tool is open, the first step in actually converting and loading the file is to select the file you wish to convert. Locate the “Input File” line towards the top of the window, and select the “Add file” button  and use the file selection window to select the file you want to convert and load. The second step is to select the location you want the converted file saved to. Locate the “Output File” line immediately below the “Input File” line and select the “Video Path” button  and use the “browse for folder” window to select the save location. As this conversion tool is already calibrated to convert your files for optimal quality, you simply need to

select the “Begin” button  and the player will convert the file for you.

Please note that if the player is connected to your computer when you open this tool, you will see an additional window to the right of the main window. This is the media player window.

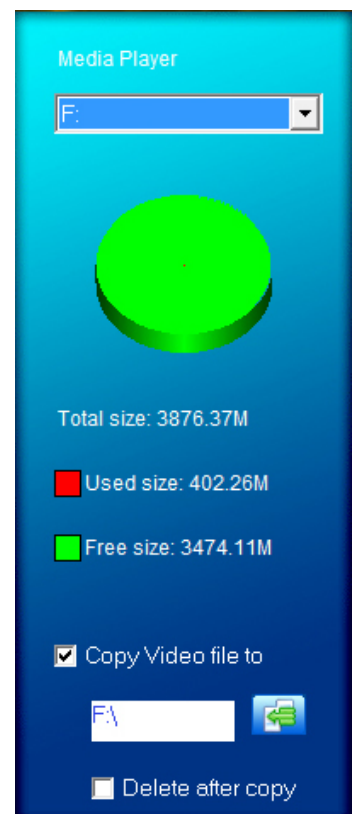
Please note that the window will display the drive letter assigned to your player; if you have multiple players connected, it will have an option for each drive. Below

the drive letters is a pie chart showing the amount of storage space available and the amount used.

There is also a check box giving you the option to

automatically copy the video file to your drive.

Selecting this will save you a step in loading your video files, as the converter will save a copy of the converted file to your computer, and then automatically load it on to the player as well!



Once the file has finished converting and loading on to your player, follow the “Safely remove hardware” instructions outlined above, and enjoy your video.

If you receive an error when attempting to convert a video file, then you likely lack the proper video codecs on your computer. There are several large codec packs which will contain the majority of the common video codecs, such as the K-Lite Mega codec pack, and the Storm codec pack. We recommend downloading them from a trusted source and installing them and attempting to convert the files then.

### **Limited Manufacturer’s Warranty**

1. MACH SPEED products carry a one year from date of purchase warranty This warranty is nontransferable.
2. Mach-Speed Technologies warrants to the original registered end-user purchaser that Mach Speed products will be free from defects in materials and workmanship for one year from the date of new purchase. During the warranty period and upon proof of purchase the product will be repaired or replaced (with the same or a similar model, which may be a refurbished model) at Mach

Speed Technologies option, without charge for either parts or labor. This warranty shall not apply if the product is modified, tampered with, misused, physically damaged, or subjected to abnormal working conditions (including, but not limited to, electrical, fire, and water damage).

**THIS WARRANTY DOES NOT GUARANTEE YOU UNINTERRUPTED SERVICE. REPAIR OR REPLACEMENT AS PROVIDED UNDER THIS LIMITED WARRANTY IS THE EXCLUSIVE REMEDY OF THE PURCHASER.**

**To obtain service under this warranty, you must contact our Technical department at (580) 272-0035 to obtain an RMA number. Mach Speed Technologies will only replace or repair products that are sent to us with an authorized RMA number.**

Return Merchandise Authorization (RMA):

1. Customers will be charged for additional testing and repackaging when returned “bad” items are found to have no problems or defects.
2. Items found to be out-of-warranty or not belonging to Mach Speed Technologies will not be replaced. Instead, they will be returned back to the customer freight-collect.

3. RMA's will be shipped back to customer via UPS ground delivery. Express shipping will be at additional costs to the customer.

4. All RMA's must be accompanied with a copy of original receipt or invoice with name, return address and phone number of customer.

### **Exchanges:**

1. Items will not be cross-shipped for any reason.

2. The original receipt or invoice must accompany all exchanges.

3. All exchanges must be shipped freight pre-paid by the customer and include a pre-paid shipping label for shipment back to the customer. Furthermore, the customer is expected to insure all items being shipped back. Mach Speed Technologies is not responsible for any losses or damages for such equipment.

4. All sales are final. Mach Speed Technologies will not accept any returns for credit or refund.

### **Discrepancy & Shipping Damage:**

1. For wrong items, missing items, shipping damage, or other discrepancy; customer should report to RMA



department on the day in which the items were received. Any claims after one business day of receipt will not be honored.

2. For any shipping damage, customer must file a claim with their carrier immediately. All items are shipped insured, thus must be reported for coverage.

3. Customer is responsible for paying any freight charge caused by refused shipment or unclaimed goods.

4. Mach Speed Technologies will make every reasonable effort to deliver on time however; Mach Speed Technologies will not be liable for late or lost shipments.

### **Consequential Damages and Limitations:**

1. Mach Speed Technologies shall not be liable for any failure to perform or delay in performing any of its obligations when such failure or delay is due to circumstances beyond its reasonable control, including, without limitation, any act of God, war, strike, riot, fire, flood, earthquake, lock-out, late or non-delivery by suppliers, shortage or unavailability of materials, components or transportation facilities, or any act, refusal to act, regulation, order or intervention of any governmental authority.

2. Under no circumstances shall Mach Speed

Technologies be liable for any special, indirect, incidental or consequential damages of any kind or nature whatsoever, including, without limitation; lost goodwill, lost resale profits, loss of data or software, work stoppage or impairment of other goods, and whether arising out of breach of any express or implied warranty, breach of contract, tort (including negligence), strict product liability or otherwise, even if advised of the possibility of such damage or if such damage could have been reasonably foreseen.

If at any point, you have questions about your player or experience an issue with your player, please feel free to contact our technicians at [mssupport@machspeed.com](mailto:mssupport@machspeed.com) or by phone at 580- 272- 0035.