



KYE Systems Corporation

User's Guide

ColorPage-Vivid 4 USB Scanner

All trademarks and brand names mentioned in this publication are property of their respective owners.

©2001..KYE Systems Corp. All rights reserved. No portion of this document may be reproduced without permission.

Discover New 

www.geniusnet.com.tw

Table of Contents

INTRODUCTION	1
HOW TO USE THIS GUIDE.....	2
CONVENTIONS OF THIS GUIDE	2
A NOTE ABOUT ICONS.....	3
SYSTEM REQUIREMENTS	4
PACKAGE CONTENTS.....	5
CHAPTER I. INSTALLING GENIUS COLORPAGE-VIVID 4 USB SCANNER	6
SOFTWARE REQUIREMENTS	7
HARDWARE REQUIREMENTS	7
INSTALLING AND SETTING UP THE SCANNER	7
SOFTWARE INSTALLATION.....	10
INSTALLING ADDITIONAL SOFTWARE.....	11
UNINSTALLING THE SCANNER	11
CHAPTER II. USAGE AND MAINTENANCE	13
SCANNER UTILITY PROGRAM.....	14
<i>Connection Status</i>	15
<i>Aligning the Scanner</i>	15
<i>Lamp Control</i>	15
SCANNING.....	17
<i>Scan and Image Editing</i>	17
CHAPTER III. HOW TO USE QUICK FUNCTION BUTTONS	19
FUNCTION BUTTONS SETTING	20
<i>"Scan" Button</i>	20
<i>"Email/Web" Button</i>	21
<i>"Text/OCR" Button</i>	23
<i>"Print/Copy" Button</i>	24
<i>"File/Fax" Button</i>	25
MAINTENANCE.....	27
APPENDIX A: SPECIFICATIONS	28
APPENDIX B: CUSTOMER SERVICE AND WARRANTY	29
STATEMENT OF LIMITED WARRANTY.....	30
FCC RADIO FREQUENCY STATEMENT	31
CONTACTING GENIUS	32

Introduction

Welcome to the world of Genius ColorPage–Vivid 4 USB scanners, the ultimate in imaging. Your new scanner will improve the professionalism of your day-to-day computing tasks by allowing you to input images and electronic text into your computer system.

Like all of our products, your new scanner is thoroughly tested and backed by our reputation for unsurpassed dependability and customer satisfaction.

Please remember to register your scanner via Genius' Web Site. As long as you complete the registration, you are one of our Genius Club members and will receive on-going Genius new product and updated driver information from time to time.

The last page of this user's manual provides more information for contacting Genius Service Center. Please feel free to contact us or visit GeniusLife Homepage (<http://www.geniusnet.com.tw/>) for getting better service.

Thank you for choosing Genius Product. We hope you will continue to turn to us for additional quality products as your computing needs and interests grow.

How to Use This Guide

This User's Guide provides instructions and illustrations on how to install and operate your scanner. This guide assumes the user is familiar with the Microsoft Windows XP / Me / 2000 / 98. If this is not the case, we suggest you learn more about Microsoft Windows by referring to your Microsoft Windows manual before using your scanner.

The Introduction section of this manual describes the box contents and minimum computer requirements to use this scanner. Before you start installing your Genius ColorPage-Vivid 4 USB, please check the box contents to make sure all parts are included. If any items are missing, please contact the vendor where you purchased your scanner or the Genius Service Center directly at one of the locations listed on the last page of this manual.

Chapter I, Setting Up Your New Genius ColorPage-Vivid 4 USB Scanner, describes how to install scanner's programs and connect the scanner to your computer.

Note: The ColorPage-Vivid 4 USB scanner connect to your computer through the Universal Serial Bus (USB). If your computer does not support USB technology, you will need to purchase a USB interface card to add USB capabilities to your computer.

Chapter II describes how to test, maintain and clean your scanner. It also describes how to use the Scanner Utility Program which helps you troubleshoot and fix connection problems which may have occurred during the scanner installation.

Chapter III contains some basic descriptions on how to use your scanner. More detailed descriptions can be found by using the Help function in the relevant scanner programs. Appendix A contains Genius's limited warranty agreement and FCC statement concerning the product.

Conventions of this Guide

- Bold** — Important note or first use of an important term in a chapter.
- ALL CAPS** — Represents commands or contents on your computer screen.

A Note about Icons

This guide uses the following icons to point out information that deserves special attention.



Danger

Danger: A procedure that must be followed carefully to prevent injury, or accidents.



Caution

Caution: Information that, if not followed, may result in data loss or damage to the product.



Attention

Pay Special Attention: Instructions that are important to remember and may prevent mistakes.

System Requirements

- Windows/Intel Compatible Personal Computer
- Pentium CPU or above
- CD-ROM Drive
- 64 MB RAM (128 MB Recommended)
- 160 Free Hard Disk Space (260 MB Recommended)
- USB Port
- Microsoft™ Windows XP / Me / 2000 / 98
- Video card that supports 16-bit color or greater

Package Contents

1. Scanner
2. Power Adapter (24V 550mA)
3. USB Cable
4. Quick Installation Guide
5. CD-ROM in 1 pc

Setup / Application CD-ROM includes the following application programs:

- Scanner Setup Program
- Genius TWAIN Program
- NewSoft PageManager Program
- NewSoft ImageFolio (Imaging Editing Software)
- NewSoft Mr. Photo (Photo Management Software)
- BridgeWell Page abc (Web Editing Software)
- ABBYY FineReader Sprint 4.0 (Text Recognition Software)
- This User's Guide (Electronic Version)



Chapter I. Installing Genius ColorPage-Vivid 4 USB Scanner

Before installing your scanner, please verify that you have all of the proper components. A list of the package contents is provided page 5 of this guide.

Software Requirements

Genius ColorPage-Vivid 4 USB comes with scanner body, scanner's install driver, Genius TWAIN program, NewSoft PageManager program, NewSoft ImageFolio image-editing software, NewSoft Mr. Photo photo management software, ABBYY FineReader Sprint 4.0 OCR software, BridgeWell Page abc web editing software. All of these programs use approximately 160 megabytes of hard disk space after installing into your computer. To ensure ample room for the installation, as well as for scanning and saving images, a minimum of 260 megabytes of hard disk space is recommended.

Hardware Requirements

Genius ColorPage-Vivid 4 USB scanner connects to your computer through the Universal Serial Bus (USB) which supports *hot Plug and Play*. To determine whether your computer is USB-capable, you must check the rear of your PC. Upon examination, you should find one or two rectangular USB ports.

If you don't find such USB ports on your computer, then you need to purchase a certified USB interface card to add USB capabilities to your computer.

Installing and Setting up the Scanner

Please follow the step-by-step procedures described below to install the Genius ColorPage-Vivid 4 USB scanner.

VERY IMPORTANT

Unlock Your Scanner First

To unlock the scanner, move restraint located on the rear of the scanner toward the unlock position. If you need to transport the scanner, please lock it to prevent any scanner damage. For best image quality, be sure the cover is closed before scanning.



1. Please take a moment to study Figure 4.

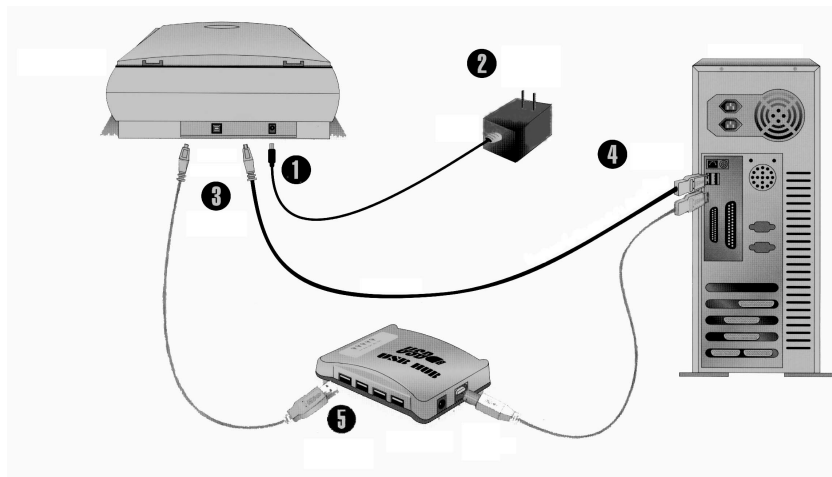


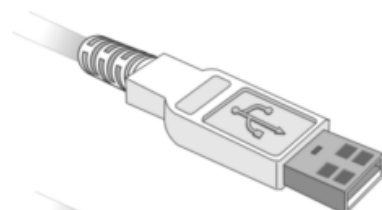


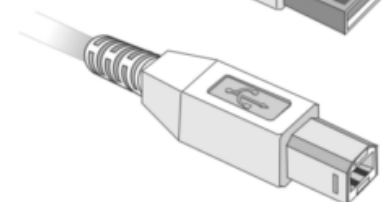
Figure 4. Installing the ColorPage-Vivid 4 USB Scanner

2. Plug the power adapter into the scanner's power receptor which can be identified by the symbol  on its top (see Figure 4, Step 1).
3. Plug the other end of the power adapter into a standard AC power outlet (see Figure 4, Step 2).
4. Plug the square end (Type B connector) of the included USB cable to the USB port at the rear of the scanner (see Figure 4, Step 3). You can find a USB sign  beside the USB connector at the rear of the scanner.
5. Plug the rectangular end (Type A connector) of the USB cable to the USB port on the back of your computer (see Figure 4, Step 4).

Note: If there is another USB device connected to the computer, connect the scanner to an available USB port.



Type A Connector



Type B Connector

6. If you plan to connect your scanner to a USB hub¹, make sure that the hub is connected to the USB port in your computer. Next, connect the scanner to the USB hub (see Figure 4, Step 5).

Note: If you do not have a USB port available, you might need to buy a USB port.

¹ The USB hub is not included with the scanner.

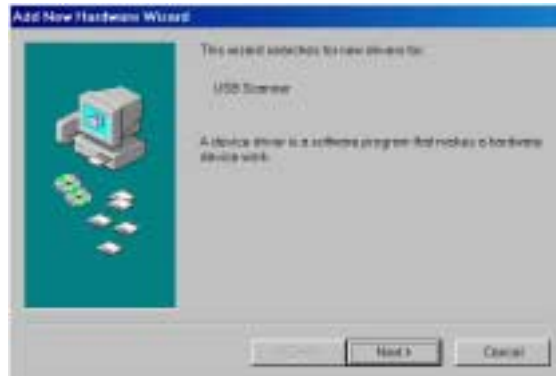


Attention

When possible, we recommend using the 4 foot (1.2 meters) USB cable provided with your scanner. If you wish to use a different USB cable, make sure that it is a fully rated twisted-pair USB cable and has a Type A connector at one end and a Type B plug on the other.

Software Installation

1. If the USB components on your computer are functioning correctly, they will automatically sense a new device connected to the USB port causing the following window to appear on your screen. **Note:** If your computer was off when you connected the scanner, the message below will be displayed when you turn the computer on and when Windows starts.



2. Please click on the NEXT button to continue. The following window will appear:



3. Choose SEARCH FOR THE BEST DRIVER FOR YOUR DEVICE [RECOMMENDED] and click on the NEXT button again, opening the following window:



4. Next, please insert the Setup/Application CD-ROM, included with your scanner, into your CD-ROM drive. Click the CD-ROM DRIVE box once, causing a check to appear in it as shown above and then click on the NEXT button again. The following window will appear:



5. Click on the NEXT button to continue. Follow the on-screen instructions to install all software that your new USB scanner requires.
6. After the software is installed, close all open applications and click on the FINISH button to restart your computer now.

Please consult the following chapter for information on how to test, configure and use your new scanner.



Installing Additional Software

Your scanner is TWAIN compliant and functions with virtually all available TWAIN compatible program. If you purchase additional program to be used with your scanner, please make sure that it conforms to the TWAIN standard.

Uninstalling the Scanner

Windows XP / Me / 2000 / 98 provides an Uninstall Wizard for uninstalling your scanner software driver and application programs:

Uninstall from the “Start Menu” (Uninstall Wizard)

1. From the Windows Start menu, select Programs, followed by the name of your scanner.
2. From the drop-down menu, select Uninstall.
3. A window will pop up, asking you to confirm the deletion of the selected application and all of its components. Click OK and the UninstallShield program will run automatically and delete the scanner software driver.

4. Once completed, restart Windows.

Chapter II. Usage and Maintenance

Scanner Utility Program

The Scanner Utility Program can help you get your new scanner up and running. In addition, it contains a number of other features to help you tailor and control the scanner.

Most significantly, the Scanner Utility Program checks to make sure that the scanner software is properly installed and the scanner and computer are communicating with each other.

Two other features of the Scanner Utility program are **the scanning lamp controls** and **the scanning position alignment utility**. The Scanner Utility allows you to turn the scanning lamp on and off, and define an idle time for the scanning lamp to automatically turn itself off. Also, it allows you to define the exact position on the scanning glass where scanning will begin. The scanner lock was designed to hold the scanning lamp in place during shipping, but some refinement of the initial scanning position may still be necessary.

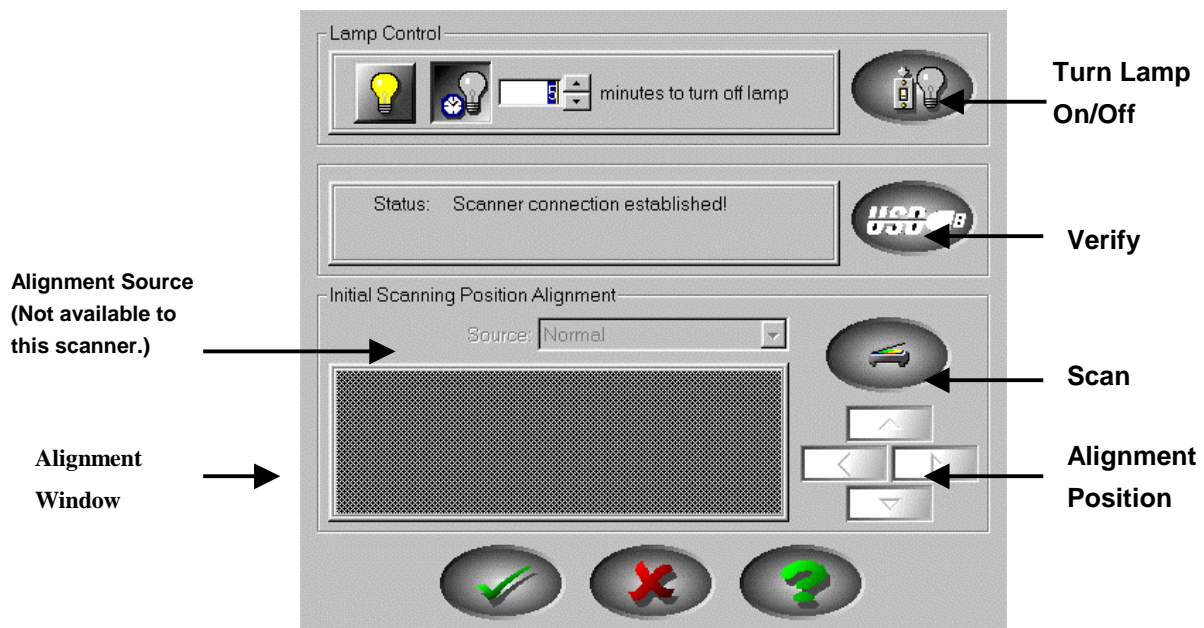


Figure 6. Scanner Utility



Attention

The Scanner Utility program does NOT affect the quality of scanned images. It is only used to establish a connection with the scanner. Settings that affect the scanned image (i.e., color, size, readability, clarity, etc.) can be found in the scanner software programs and especially the TWAIN interface.

Connection Status

The first step to take when troubleshooting connection problems with your scanner is to check all physical connections. Make sure your scanner is plugged in and the USB cable is fit snugly into the rear of your scanner and computer.

Secondly, determine the status of your USB hardware and software configuration. To do this, please run the Scanner Utility program as described below:

1. Click on the START button, then choose PROGRAMS, ColorPage-Vivid 4 USB and then SCANNER UTILITY.
2. Once the Scanner Utility window is open, locate and click on the USB button shown below:

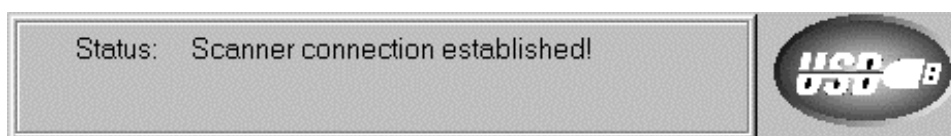


This will check the status of your USB hardware and software configuration.

3. If there is a problem with the installation, the following message will appear:



4. If the connection is OK, the following window will be displayed:



Aligning the Scanner

In most cases, the scanner doesn't need to be aligned but there are instances when the alignment might be required. You need to align the scanner only if parts of the scanned document are missing from any of its edges. For example, the heading of a document might be missing from the top edge after the document has been scanned.

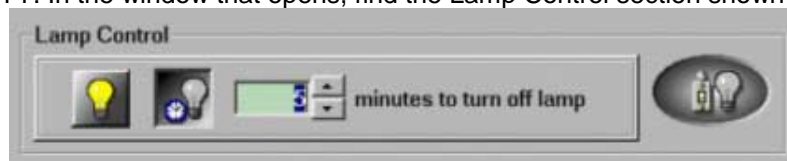
To align the scanner, follow the steps below:

1. Place a photograph on the top right side of the scanner glass (near the back of the scanner). Please note that only part of the photograph will be scanned.
2. Click on the SCAN button. *Part* of the photograph will be displayed in the ALIGNMENT window.
3. Click on the ALIGN POSITION buttons until the top left corner of the scanned photograph aligns with the top left corner of the preview window.
4. Click on the check mark button when the alignment has been completed.

Lamp Control

The scanner's lamp may be turned ON and OFF manually in the Scanner Utility program. While there, you can also set a timer to turn the lamp off after the scanner has been idle for a designated amount of time.

To do this, click on the Windows START button and choose PROGRAMS, ColorPage-Vivid 4 USB, SCANNER UTILITY. In the window that opens, find the Lamp Control section shown below:



Click on the On/Off switch at the far right of the section to immediately turn the scanning lamp on or off.

You may also set the default time for the lamp to automatically turn off after a scan by clicking the up or down arrows next to the area that reads "minutes to turn off lamp."

Scanning

Genius ColorPage-Vivid 4 USB scanner is able to scan from small size document (such as business cards) to A4-sized magazines. However, some programs have limitations as to the information they can handle. The capacity of the computer's memory, or free hard disk space, can also limit the physical size of the document that you scan.

Scan and Image Editing

ColorPage-Vivid 4 USB scanner provides two different ways for scanning:

From "SCAN" Hotkey --

1. Open the paper cover and place a picture face down onto the scanner glass and close the paper cover.
2. Pressing the "Scan" hot key button on the front site of scanner body.
3. The **Presto! PageManager** software will be launched, then **Genius TWAIN** window will appear and starts to automatically scan. (refer to Figure 9. Genius TWAIN)
4. You may select the appropriate scan mode and resolution. To Scan, click the **SCAN** button from **Genius TWAIN** window.
5. The scanned image will be saved into **PageManager** software while completing scan.
6. You may click the **CLOSE** button to close the **Genius TWAIN** window and review the scanned image under the folder of **INBOX** in **PageManager** software.

From image-editing software --

1. Open the paper cover and place a picture face down onto the scanner glass and close the paper cover.
2. Open NewSoft **ImageFolio** or other within image-editing software.
3. Open the **Genius TWAIN** window.

Choose "**Select Source**" in the File menu → the Select Source dialog appears → Select the name of the scanner "**Genius ColorPage-Vivid 4 USB**" → The dialog box closes → Choose **Acquire** in the File menu, and the **Genius TWAIN** window opens.

4. Select the appropriate scan mode and resolution. To Scan, click the **SCAN** button. To preview image, click the **PRESCAN** button.
5. When scanning completely, click the **CLOSE** button to close the **Genius TWAIN** window, process and view the image.

If an image appears on your screen, your scanner is working properly. If the image doesn't appear to your liking, don't worry. You only need to adjust some settings in the **Genius TWAIN** window. To learn how to adjust scanner settings, please refer to the **Genius Help** by clicking on the **Help** button in the **Genius TWAIN** window.



Figure 9. Genius TWAIN Interface

Chapter III. How to Use Quick Function Buttons

Function Buttons Setting

Before setting scanner buttons, please make sure to install the required application software from the installation selection window firstly.

"Scan" Button



■ **Note:**

1. The automatically scan and file saving function is only to work under **"NewSoft Presto! PageManager"**.
2. Make sure to install **"NewSoft Presto! PageManager"** software before you using the Scan hotkey.
3. If choosing the bundle image software **"NewSoft Presto! PageManager"**, users can enjoy the function "click and scan" by pressing the **"Scan" button**.
If choosing other image software(for example, Photo Shop), users can initiate it too , but the rest steps of scanning have to be done by hands.

■ **To set up NewSoft Presto! PageManager as the default Application Program**

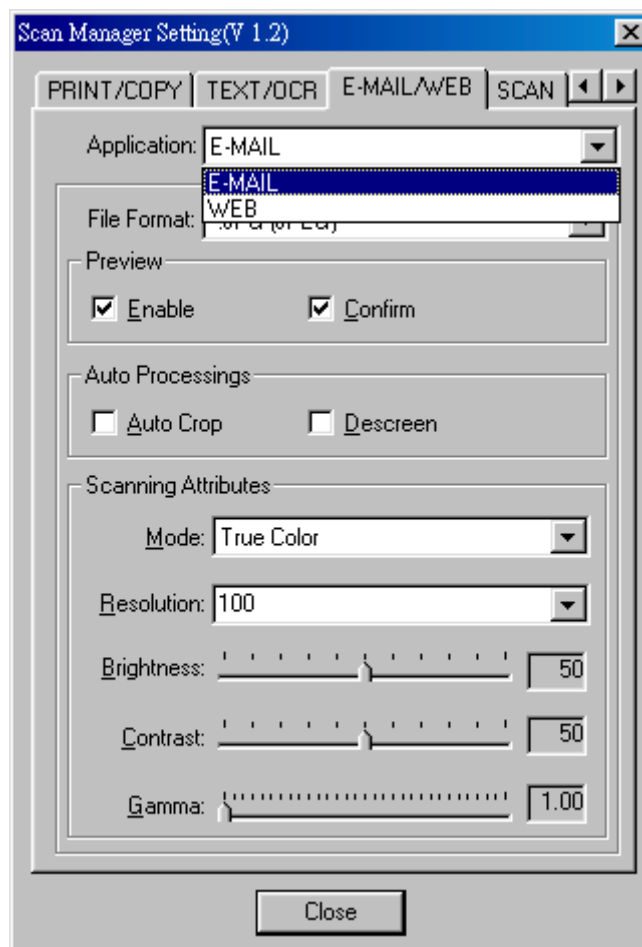
1. Open the **"Scan Manager Setting"** window by double-clicking the ICON of **"KYE Scan"** from system tray. Or click on mouse RIGHT button and enter **"Setting"**
2. Click on the **"Scan"** ICON in the **"Scan Manager Setting"** window.
3. Choose **"NewSoft PageManager"** as the application Program in drag-down menu.

4. To select automatically scan after preview for flatbed scanning, if necessary.
5. Click on "**Close**" to complete setting.

■ **To use Scan Button**

1. Place a document or picture face down on the scanning glass.
2. Press the "**Scan**" Button
3. "**PageManager**" Window displayed
4. "**Genius TWAIN**" displayed
5. Automatically scanning
6. Automatically saving file under the folder of "**INBOX**" in "**PageManager**" software.

"Email/Web" Button



■ **Note**

1. Before using this function, please make sure you already installed "**Email program**" (**supporting MAPI protocol**) or "**BRIDGEWELL Page abc**" software in your computer.
2. To use "**Email button**", please make your "**Email program**" as the default application before you using the Email button.
3. To use "**Web button**", please make "**BRIDGEWELL Page abc**" as the default application before you using the Web button.

■ **To set a default Simple MAPI client (i.e. Outlook Express)**

1. In the **Start Menu** choose **Program**
2. Enter "**Internet Explorer**"
3. Find "**Outlook Express**"
4. In the drag-down menu of Tools, select options → Select "**Make Outlook Express as my default email program**" and "**Make Outlook Express as my default Simple MAPI client**".

■ **To set up "Email/Web" Button as "Scan to Email" function**

1. Open "**Scan Manager Setting**" window by double-clicking the ICON of "**KYE Scan**" from system tray. Or click on mouse RIGHT button and enter "**Setting**".
2. Click on the "**Email/Web**" ICON in the "**Scan Manager Setting**" window.
3. Choose "**Email**" as the default application in drag-down application menu.
4. To adjust or select proper scanning attributes for scanning Reflection Object, if necessary.
5. Click on "**Close**" to complete setting.

■ **To use "Email/Web" Button for "Scan to Email" function**

1. Place a document or picture face down on the scanning glass.
2. Press the "**Email/Web**" Button
3. Automatically scanning
4. Automatically saving image file and transfer image file as an attachment of new mail in Email software.

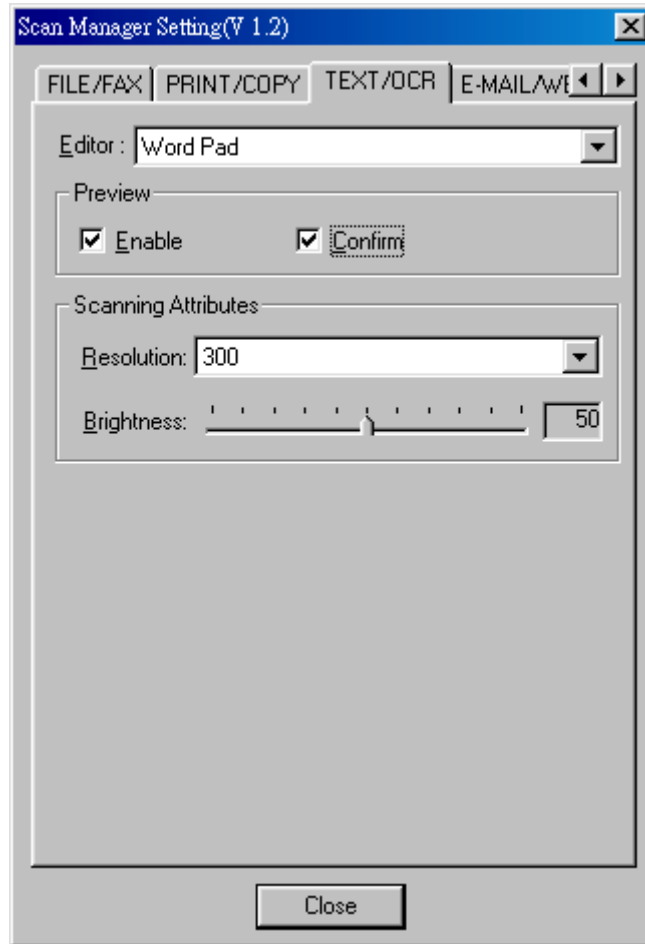
■ **To set up Email/Web Button as "Scan to Web" function**

1. Open "**Scan Manager Setting**" window by double-clicking the ICON of "**KYE Scan**" from system tray. Or click on mouse RIGHT button and enter "**Setting**".
2. Click on the "**Email/Web**" ICON in the "**Scan Manager Setting**" window.
3. Choose "**Page abc**" software in drag-down application menu.
4. To adjust or select proper scanning attributes for scanning Reflection Object, if necessary.
5. Click on "**Close**" to complete setting.

■ **To use Email/Web Button for "Scan to Web" function**

1. Place a document or picture face down on the scanning glass.
2. Press the "**Email/Web**" Button
3. Automatically scanning
4. Automatically saving image file and transfer image file into "**Page abc**" Web Editing software.

"Text/OCR" Button



Please install and set up **ABBYY FineReader Sprint 4.0** OCR software before you using this function.

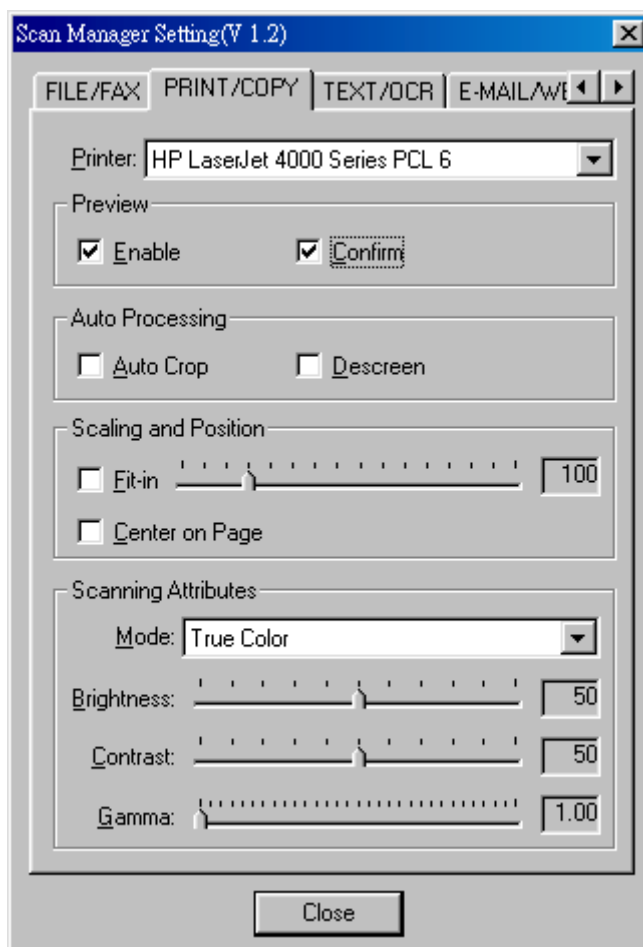
■ To set up Editor

1. Open "**Scan Manager Setting**" window by double-clicking the ICON of "**KYE Scan**" from system tray. Or click on mouse RIGHT button and enter "**Setting**".
2. Click on the "**Text/OCR**" ICON in the "**Scan Manager Setting**" window.
3. Choose your word processor by drag-down Editor menu.
4. To adjust or select proper scanning attributes for scanning Reflection Object, if necessary.
5. Click on "**Close**" to complete setting.

■ To use "Text/OCR" Button

1. Place a typewritten text document face down on the scanning glass.
2. Press the "**Text/OCR**" Button
3. Scanner starting to automatically scanning
4. Choose "**Yes**" or "**No**" for Next Page to do OCR.
5. Word processing software will be launched and recognized Text will be transfer to default word processing software.

"Print/Copy" Button



Please install and set up printer driver before using this function.

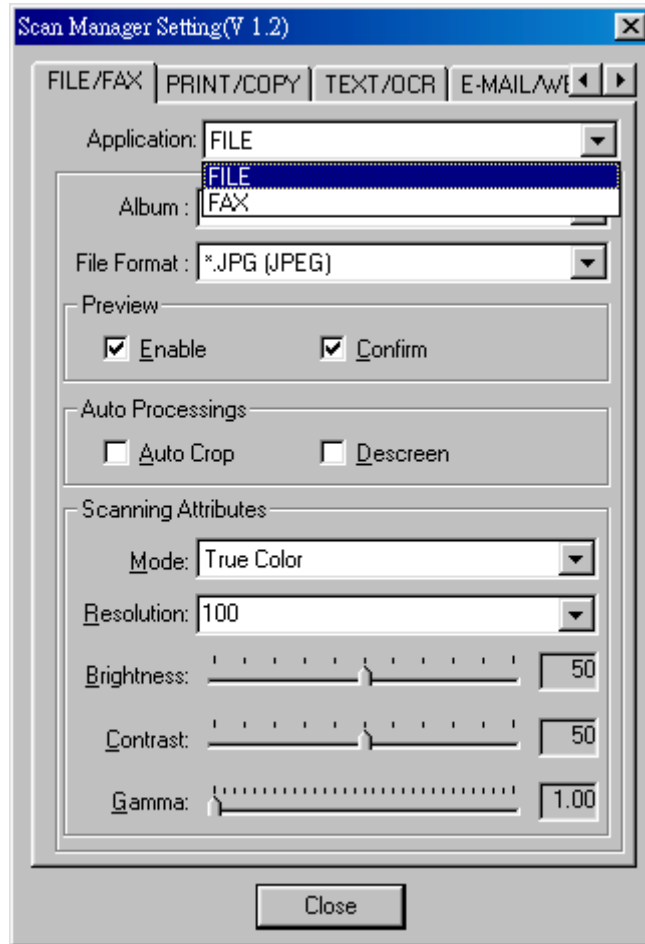
■ To set up Printer

1. Open "**Scan Manager Setting**" window by double-clicking the ICON of "**KYE Scan**" from system tray. Or click on mouse RIGHT button and enter "**Setting**".
2. Click on the ICON of "**Print/Copy**".
3. Select the proper printer from the drag-down menu.
4. To adjust or select proper scanning attributes for scanning Reflection Object
5. Click "**Close**" to exit Scan Manager Setting

■ To use "Print/Copy" Button

1. Place a document or picture face down on the scanning glass.
2. Press the Print/Copy Button
3. Scanner starting to automatically scan
4. Choose "**Yes**" or "**No**" for Next Page to Copier
5. Copying

"File/Fax" Button



To use Fax button function, please install **PC Fax** software before setting Fax button.

To use File button function, please install **"NewSoft PageManager"** before setting File button.

■ **To set up PC Fax software**

1. Open "**Scan Manager Setting**" window by double-clicking the ICON of "**KYE Scan**" from system tray. Or click mouse RIGHT button and enter "**Setting**"
2. Click on the ICON of "**File/Fax**"
3. Choose PC Fax software in drag-down application menu.
4. To adjust or select proper scanning attributes for scanning Reflection Object.
5. Click "**Close**" to complete setting.

■ **To use "File/Fax" Button as "Scan to File" function**

1. Place a document or picture face down on the scanning glass.
2. Press the "**File/Fax**" Button
3. Scanner starting to automatically scan
4. Choose "**Yes**" or "**No**" for Next Page to Fax
5. Copying
6. Fax Application Window Open
7. Following the screen instruction to proceed fax transmission.

■ **To set up File software**

1. Open "**Scan Manager Setting**" window by double-clicking the ICON of "**KYE Scan**" from system tray. Or click mouse RIGHT button and enter "**Setting**".
2. Click on the ICON of "**File/Fax**"
3. Choose File Software ("Scan Manager") in drag-down application menu.
4. Select the proper folder from the drag-down filing folder menu.
5. To adjust or select proper scanning attributes for scanning Reflection Object.
6. Click "**Close**" to complete setting.

■ **To use "File/Fax" Button as "Scan to File" function**

1. Place a document or picture face down on the scanning glass.
2. Press the "**File/Fax**" Button
3. Scanner starting to automatically scan
4. Choose "**Yes**" or "**No**" for Next Page to scan.
5. "**PageManager**" Window Open.
6. Scanned Image will be filed into the default folder of "**PageManager**".

Maintenance

To keep your scanner working smoothly, take a moment to review the following maintenance tips.



Caution

- Avoid using the scanner in a dusty environment. When it is not in use, keep the scanner covered. Dust particles and other foreign objects may damage the unit.
- Do not attempt to disassemble the scanner. There is danger of an electrical shock and opening your scanner will void your warranty.
- Do not subject the scanner to excessive vibration. It may damage the internal components.
- Be sure not to bump or knock the scanner glass as it is fragile and could break.
- Clean the scanner glass by lightly spraying a non-abrasive glass cleaner onto a lint-free cloth. Then, wipe the glass thoroughly with the cloth. **DO NOT SPRAY CLEANER DIRECTLY ONTO THE SCANNER GLASS.** Excess liquid residue may fog or damage the scanner.
- Your scanner operates best in temperatures between 10° C to 40° C (50° F to 104° F).

Appendix A: Specifications

General	
Physical dimensions:	456 x 270 x 58.8 mm
Weight:	2.4 kgs (5.28 lbs)
Operating Temperature:	10° C to 40° C (50° F to 104° F)
Scan Area:	Flatbed: 8.5" x 11.61" (210 mm x 295 mm)
Scan Method:	Single-Pass
Scan Mode:	24-Bit Color / 48-Bit Color for program enhancement 8-Bit Grayscale 1-Bit Line-art (Black & White)
Resolution:	Flatbed: Optical 600 x 1200 dots per inch (19200 dpi software interpolated)
TWAIN	Full TWAIN Compliance
Connection:	USB Port
Lamp type:	Cold Cathode Lamp
Power adapter:	Power Output DC 24V, 550mA (Load)
Power Consumption:	Operation – 13.2 watts maximum Idle – 6 watts
EMI:	FCC Class B

Appendix B: Customer Service and Warranty

If you encounter problems with your scanner, please review the installation instructions and troubleshooting suggestions contained in this guide.

For further assistance call our customer support phone number listed on the last page of this guide. To avoid any delay, please have the following information available before calling:

- **Scanner name and model number**
- **Scanner serial number (located at rear of scanner near port connectors)**
- **A detailed description of the problem**
- **Your computer manufacturer and its model number**
- **The speed of your CPU (Pentium III 866, etc.)**
- **Your current operating system and BIOS (optional)**
- **Name of program package(s), version or release number and manufacturer of the program**
- **Other USB devices installed**



Attention

We are continuously enhancing the performance of our product drivers. To check for the updated device driver you may visit our Web Site. (Please refer to the section of “Contacting Genius” on the last page of this manual.)

Statement of Limited Warranty

This Statement of Limited Warranty applies only to the options you originally purchase for your use, and not for resale, from an authorized reseller.

If you transfer this product to another user, warranty service is available to that user for the remainder of the warranty period. You should give your proof of purchase to that user.

We warrant that this machine will be in good working order and will conform to its functional descriptions in the documentation provided. Upon provision of proof of purchase, replacement parts assume the remaining warranty of the parts they replace.

Before presenting this product for warranty service, you must remove all programs, data and removable storage media. Products returned without program will be replaced without program. This Limited Warranty service does not provide for carry-in exchange when the problem results from accident, disaster, vandalism, misuse, abuse, unsuitable environment, program modification, Electro Static Discharge (ESD) damage, another machine or non-vendor modification for this product.

If this product is an optional feature, this Limited Warranty applies only when the feature is used in a machine for which it was designed.

If you have any questions about your Limited Warranty, contact Genius.

THIS LIMITED WARRANTY REPLACES ALL OTHER WARRANTIES, EXPRESS OR IMPLIED, INCLUDING, BUT NOT LIMITED TO, THE IMPLIED WARRANTIES OF MERCHANTABILITY AND FITNESS FOR A PARTICULAR PURPOSE. HOWEVER, SOME LAWS DO NOT ALLOW THE EXCLUSION OF IMPLIED WARRANTIES. IF THESE LAWS APPLY, THEN ALL EXPRESS AND IMPLIED WARRANTIES ARE LIMITED IN DURATION TO THE WARRANTY PERIOD. NO OTHER WARRANTIES APPLY AFTER THAT PERIOD.

Some jurisdictions do not allow limitations on how long an implied warranty lasts, so the above limitation may not apply.

Under no circumstances are we liable for any of the following:

1. Third party claims against you for losses or damages.
2. Loss of, or damage to, your records or data; or
3. Economic consequential damages (including lost profits or savings) or incidental damages, even if we are informed of their possibility.

Some jurisdictions do not allow the exclusion or limitations of incidental or consequential damages, so the above limitation or exclusion may not apply to you.

This Limited Warranty gives you specific legal rights, and you may also have other rights that vary from jurisdiction to jurisdiction.

FCC Radio Frequency Statement

This equipment has been tested and found to comply with the limits for a Class B digital device, pursuant to part 15 of the FCC rules. These limits are designed to provide reasonable protection against harmful interference in a residential installation.

This equipment generates, uses and can radiate radio frequency energy and, if not installed and used in accordance with the instructions, may cause harmful interference to radio communications. However, there is no guarantee that interference will not occur in a particular television reception (which can be determined by turning the equipment off and on), the user is encouraged to try to correct the interference by one or more of the following measures:

- √ Reorient or relocate the receiving antenna.
- √ Increase the separation between the equipment and receiver.
- √ Connect the equipment to an outlet on a circuit different from that which the receiver is connected.
- √ Shielded interconnect cables and shielded power cord which are supplied with this equipment must be employed with this equipment to ensure compliance with the pertinent RF emission limits governing this device.
- √ Consult the dealer or an experienced radio/TV technician for help if the conditions persist.
- √ Changes or modifications not expressly approved by the manufacturer or authorized service center could void the users authority to operate this equipment.

Contacting Genius

USA & CANADA

KYE International Corp.

Latin America
Suite 110, 8400 NW 25th St.,
Miami, FLONDA 33162, U.S.A.
Tel : 305-468-9250
Fax : 305-468-9251

Web Site: <http://www.genius-kye.com>

EUROPE

KYE Systems Europe GmbH

Karl Benz Str. 9
D-40764 Langenfeld, Germany
Tel : (49) 21 73 9743-44
Fax : (49) 21 73-9743-17
Web Site: genius@kye.me.uunet.de

EUROPE

KYE Systems UK Ltd.

Unit 4, 131 Beddington Lane,
Croydon, Surrey. CR0 4TD. UK
Tel : (44) 208 664 2727 (sales)
(44) 208 664 2739 (Tech. Support)
Fax : (44) 208 664 2721(sales)
(44) 208 664 2740(Tech. Support)

Web Site: <http://www.kye.co.uk>

ASIA PACIFIC

KYE Systems H.K. Corp. Ltd.

Unit 1701, 17th Floor, Aitken Vanson Centre, No.61
Hoi Yuen Road, Kwun Tong, Kowloon, Tong, Hong
Tel : (852)2342 3813
Fax : (852)2341 9517

Web Site: <http://www.geniusnet.com.hk>

ASIA PACIFIC

KYE Systems Corp.

No.492Chung Hsin Rd., Sec.5, San Chung, Taipei
Hsien 241, Taiwan, R.O.C.
Tel : (886) 2 2995-6645
Fax : (886) 2 2995-6649

Web site: <http://www.geniusnet.com.tw>

ASIA PACIFIC

KYE Systems (M) SDN BHD

NO. 2, Jalan BK 1/12, Kinrara Industrial Park
Bandar Kinrara, 6 1/2 Miles, Jalan Puchong,
58200 Kuala Lumpur, Malaysia
Tel : (603) 575 1355
Fax : (603) 575 6362 / 6962

Web site: sales_kye@kye-systems.com.my