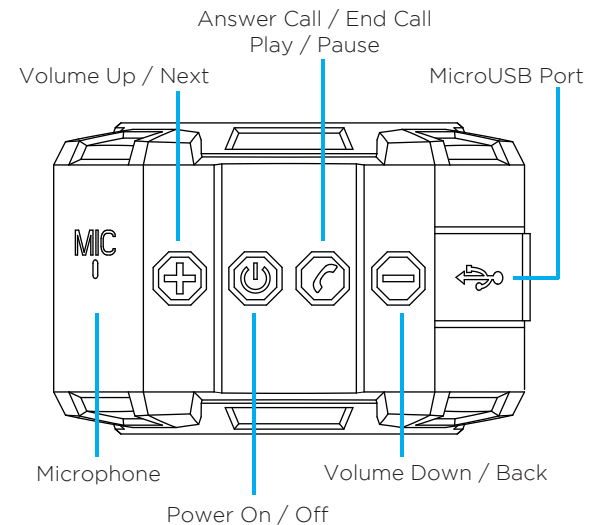




User's Manual
Rugged Life Speaker
RIPPLE

Speaker Basics



Charging

Connect the speaker with the USB cable to a computer or charging port. The power button will glow red while charging, and will turn off when charging is complete.



Charging



Charging

Storage & Precautions

- Store the speaker in a dry, ventilated place away from children.
- Always make sure the speaker is powered off before storing.
- Avoid storing the speaker in extreme temperatures that may affect battery life and speaker performance.

Pairing with Your Device

1. Turn on the speaker to enter Bluetooth mode.
2. The speaker will search for your device and say "Waiting to connect to Bluetooth device". The indicator light will rapidly flash blue to indicate the speaker is ready to pair.



Entering Bluetooth mode

3. Turn on Bluetooth on your device. Search for the device "Ematic Ripple" and tap to connect. The speaker will say "Connected" and the light will slowly flash blue after the device is connected.



In Bluetooth mode

4. You may have to enter a password on some devices with an older version of Bluetooth. Enter "0000" as the password and confirm it.

Playing Media

The speaker should be connected to your device through Bluetooth. When playing music, the music will be automatically transferred to the speaker.

Playback Controls



Press to turn up the volume.
Hold to go to the next track.



Press to play or pause.



Press to turn down the volume.
Hold to go back to the previous track.

Phone Calls

When the speaker is connected to your mobile device, your call audio will automatically be transferred to the speaker. This allows you to answer the phone hands-free.

When you have an incoming call, the speaker voice will broadcast the phone number. Press the call button to answer the call.

Note: Music will automatically pause during a call and will resume again when the call ends.



Press to answer or end a call.

Troubleshooting

| Problem | Solution |
|---|--|
| I can't hear anything from the speaker. | Turn up the volume or make sure the speaker is paired with your device. |
| I can't connect to the speaker wirelessly. OR I can't connect to the speaker via Bluetooth. | Check if bluetooth is on and if your device is connected. Please refer back to "Pairing with Your Device". |
| Can I connect more than one Bluetooth device? | No, only one Bluetooth device can be connected at a time . |
| I hear crackling. | An object is obstructing the Bluetooth connection between the speaker and your device or they are too far apart. The speaker must be within 33 ft. of your device. |

Technical Specifications

- Bluetooth 2.0
- Transmission Frequency: 2.4GHz
- Output Power: 5W
- IPX5 Water Resistance
- Built-in 3.5V 500mAh Battery
- Playing Time: About 3-6 hours
- Charging Time: About 2 hours
- Unit Weight: 0.5lbs

Customer Support

Visit ematic.us/support for customer support regarding your device.

To submit a request, fill out the required information online. You will be provided a ticket number regarding your issue which you can refer to when contacting us further.

©2015 Ematic. All Rights Reserved. Bluetooth and the Bluetooth logo are trademark of Bluetooth SIG, Inc and used by Ematic under a license. 1 Year warranty from the date of purchase, 90 days only on labor. This device complies with Part 15 of the FCC Rules. Operation is subject to the following two conditions: (1) this device may not cause harmful interference, and (2) this device must accept any interference received, including interference that may cause undesired operation. 1 year warranty from date of purchase, 90 days only on labor.