

**SONY**<sup>®</sup>

**RealShot Viewer for CLIE**  
**User's Manual**

Version 1.0

10 October 2003

© 2003 Sony Corporation

## Table of Contents

Operating environment.....	2
Notes .....	2
Registering a camera.....	4
Main viewer screen.....	4
Image area.....	5
Control area .....	5
Miscellaneous controls.....	6
Capturing pictures .....	6
Configuring RealShot Viewer for CLIE	7
Registering a new camera .....	7
Changing camera settings.....	7
Removing a camera.....	7
Network settings .....	7

---

## Introduction

The RealShot Viewer for CLIE is an application that allows you to use the CLIE (Palm OS 5.0 or later) to remote control your network camera (SNC-RZ30N/P or SNC-Z20N/P), for viewing images taken by your camera, and saving pictures.

This document shows you how to use RealShot Viewer for CLIE to operate your camera.

## Operating environment

OS	Palm OS 5.0 or later (Sony CLIE)
Required Free Memory	Approx. 100KB
Supported Models	
CLIE:	PEG-NX70V
LAN Card:	PEGA-WL110
Compatible Network Camera	SNC-RZ30N/P (firmware version 1.10 or later) SNC-Z20N/P (firmware version 1.00 or later)
Image Size	640x480, 320x240, 160x120

## Notes

- RealShot Viewer for CLIE is a copyright of Sony Corporation.
- RealShot Viewer for CLIE is distributed without warranty. Sony Corporation is not responsible for any damages incurred as a result of use of this software.
- Unauthorized distribution, reprinting, or modification of this software or

documentation is prohibited.

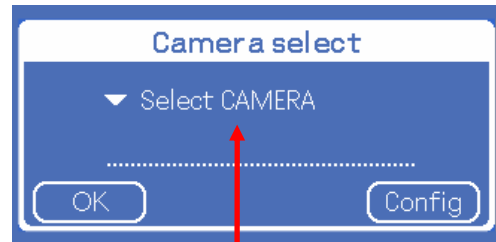
- Sony Corporation does not guarantee the accuracy of this document. Its content is subject to change without notice.

Palm OS is a registered trademark of Palm, Inc. and its subsidiaries.

---

## Using RealShot Viewer for CLIE

After launching RealShot Viewer for CLIE, the **Camera select** screen will appear. Use this screen to specify the camera you wish to control with RealShot Viewer for CLIE.

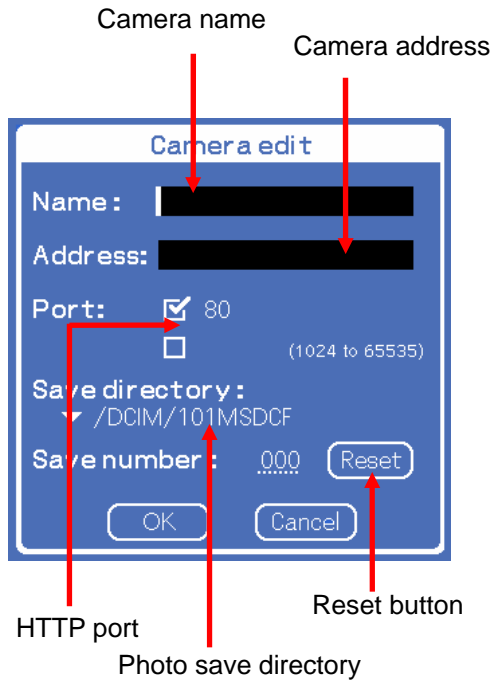


Camera list

- Select the camera you wish to monitor from the list, and tap the **OK** button. RealShot Viewer will automatically connect to the network camera, and if successful, will display the **Main Viewer** screen.
- If no cameras are registered, the **OK** button will not be shown. In this case, tap the **Config** button, and register a new camera in the **Camera edit** screen.

## Registering a camera

In the **Camera select** screen, tap the **Config** button to display the **Camera edit** screen. Use this screen to register a network camera with RealShot Viewer for CLIE.



### Name

Enter the camera name.

#### Note

You must enter a camera name.

### Address

Enter the camera's host name or IP address.

#### Note

You must enter an IP address (or host name) for the camera.

### Port

Enter the HTTP port number for the camera. This is typically port 80. When using a port number other than 80, tap the lower check box,

and enter a port number between 1024 and 65535.

### Save directory

Select a directory for saving pictures. Pictures are typically saved in /DCIM/101/MSDCF. Saving pictures in this directory allows them to be viewed with the CLIE Viewer (photo viewing software).

The directory that RealShot Viewer for CLIE creates, PALM/PROGRAMS/RSViewer, may also be stored in CLIE's internal memory (if available).

### Save number

This displays current saved picture number. Tap the **Reset** button to reset the counter. Once the picture counter reaches 999, it will automatically reset to 0.

## Main viewer screen

After selecting a camera, the **Main viewer** screen appears. Elements appearing in the **Main viewer** screen are described below.



## Image area

If the camera's image size settings meet RealShot Viewer for CLIE's supported sizes (640×480, 320×240, 160×120), then the displayed image size is fixed at 320×240.

## Pan and Tilt controls

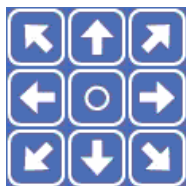
When using the SNC-RZ30N/P, you can use the image area to control camera tilt and pan.

- Tap the upper part of the image area. The camera will then move to center itself on the tapped position.
- When using the SNC-RZ30N/P (firmware version 2.00 or later), you can zoom in while tilting and panning. Drag the stylus diagonally across the upper part of the image area. A red frame will appear. As you drag the frame with the stylus, the camera will move to center the area within the frame, and at the same time zoom in.

### Note

The frame rate on the CLIE will change depending on the camera's image size. To increase the frame rate and refresh speed, set the image size to 160×120.

## Control area



For the currently displayed picture, tap the arrow button corresponding to the direction you wish to move. Holding down the button will cause the camera to continuously move in that direction.

### Note

These buttons are not available for use with the SNC-Z20N/P.



Tapping this button returns the camera to the factory set home position.

### Note

These buttons are not available for use with the SNC-Z20N/P.



Tap this button to zoom in.



Tap this button to zoom out.



Tap this button for maximum zoom in (25×).



Tap this button for maximum zoom out (1×).



Tap this button for one-touch auto-focus. This control is only available when focus mode is set to Manual on the camera.



Tapping this button enables you to pan and tilt, etc. After tapping the button, wait time or control time will be displayed in seconds. Wait time and control time are only displayed when the camera's Exclusive control mode is set to ON.



Tapping the **STOP** button will change the displayed button to **START**, and viewer operation will stop. During this time, image refresh will stop, and pan, tilt, and zoom control of the camera is unavailable. Tap the

**START** button. The displayed button will change to **STOP**, and image refresh resumes.

### ▼ Preset Position

Selecting a Preset position from the popup list causes the camera to move to a preconfigured preset position. If no preset positions have been recorded on the camera, then the popup list will not be shown.



Displays a **Capture** screen.



Displays the **Setting** screen.

#### Note

The directional arrows, home button, and **Preset position** are not available with the SNC-Z20N/P.

## Miscellaneous controls

### Controlling the camera with the jog dial

You can use the jog dial to control RealShot Viewer for CLIE and your camera.

Rotate up:	Zoom in a fixed amount (after enabling camera control with the <b>CTRL</b> button).
Rotate down:	Zoom out a fixed amount (after enabling camera control with the <b>CTRL</b> button).
Press and hold:	Capture and display static picture.
Press and rotate down:	Display <b>Setting</b> screen.

### Hardware button controls

In the **Main viewer** screen, after enabling

camera control with the **CTRL** button, you can use the application buttons, scroll button, and arrow keys to control tilt, pan, and zoom. When not in the **Main viewer** screen, these buttons behave as they normally do.

## Capturing pictures

Tapping the **Capture** button in the **Main viewer** screen displays the **Capture** screen, which allows you to capture and save static pictures of the video currently being taken by the camera.



Tap the **Save** button once to store a picture in the directory specified in the **Camera edit** screen. File names are of the form CameraName\_counter.jpg.

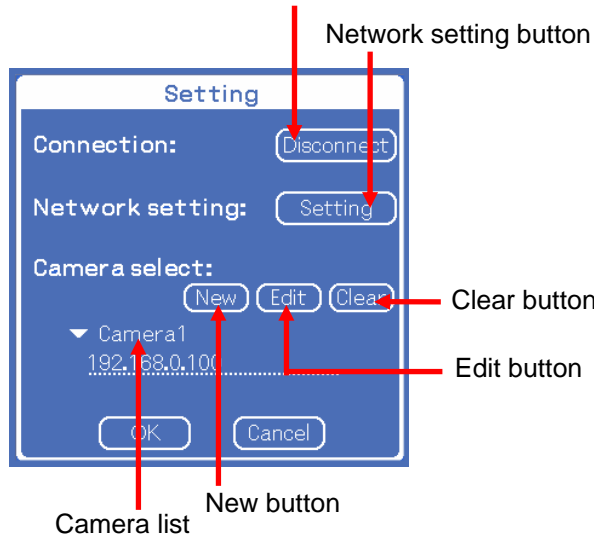
#### Note

If a file of the same name already exists, RealShot Viewer for CLIE will overwrite it with the new file.

## Configuring RealShot Viewer for CLIE

In the **Main viewer** screen, tap the **Setting** button to display the **Setting** screen, which allows you to configure RealShot Viewer for CLIE controls.

Connect/Disconnect button



### Connection

You can manually connect and disconnect from the network.

### Network setting

To specify network settings, such as proxy settings, tap the **Setting** button to display the **Network setting** screen.

### Camera select

Select the camera you wish to monitor from the camera list.

### Registering a new camera

To register a new camera, tap the **New** button to display the **Camera edit** screen.

Up to 16 cameras can be registered. If 16 cameras are already registered, the **New**

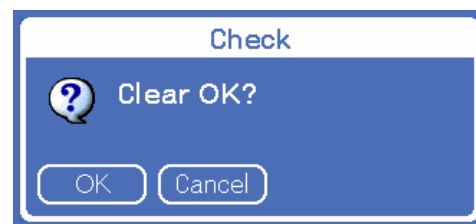
button will not be shown.

### Changing camera settings

Tap the **Edit** button to change the settings of a registered camera. The **Camera edit** screen will appear, allowing you to edit camera settings.

### Removing a camera

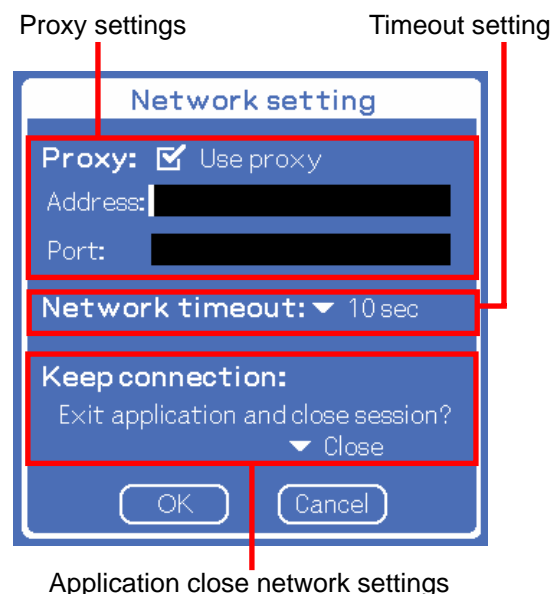
Tap the **Clear** button to remove a registered camera. A confirmation message will appear on the screen. Tap the **OK** button.



If no cameras are registered, then the **Clear** button will not be shown.

## Network settings

In the **Setting** screen, tap the **Setting** button beside **Network setting** to display the **Network setting** screen, which allows you to configure camera network settings.



## Proxy settings

When connecting to the camera via a proxy server, check the **Use proxy** check box. Enter the address and port number of the proxy server into the **Address** and **Port** fields. Address and port settings remain saved until they are replaced by new values.

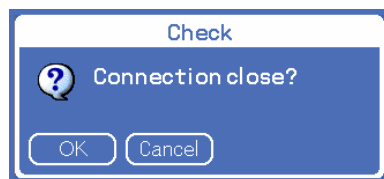
## Timeout setting

The connection timeout value (in seconds) can be set to 5, 10, 20, 30, 60, or 90. Choose a larger value when operating within a slow network. This value defaults to 10.

## Application close network settings

Choose whether to close the network connection when RealShot Viewer for CLIE is closed.

- Close:** Close the connection.
- NOT Close:** Keep the connection open.
- Notify:** Display a network close/keep open dialog window. Tap the **OK** button to close the connection. Tap the **Cancel** button to keep the connection open.





**Revision history**

Version	Date	Comment
1.0	10 October 2003	First edition, first issue