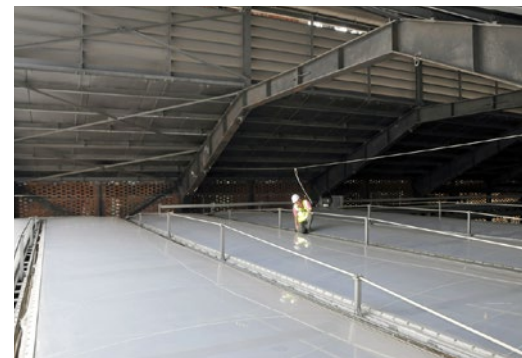
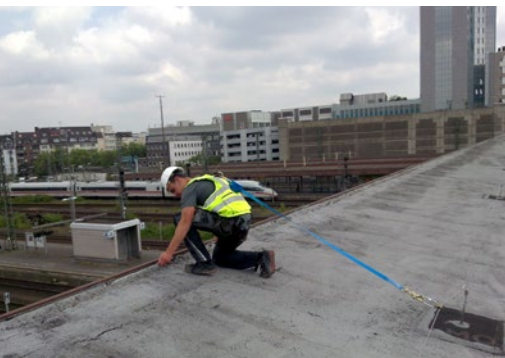




>> Product List 2015







**Above:** Königspalast Krefeld - 1 km-long overhead lifeline system clamped onto girders

**Left:** Düsseldorf Central Station - 6 km-long cabling system, partially installed on the roofs over the platforms

**Center:** Federal highway A4 near Jena - cabling systems installed along all 3 sound barrier tiers

**Right:** Landschaftspark Duisburg - fall arrest system along the maintenance catwalks and across the retractable glass roof

**Key:**



Particularly heavy or bulky products. Additional delivery charges apply.

# New challenges...



**Ludwig Beckers**  
Executive Director

... are there to be test us - particularly where our fall arrest systems not only need to be practical but also fully compliant with the latest standards. We are ready to meet these challenges - working hand-in-hand with our customers. Our individual solutions for trapezoidal sheeting and concrete applications have been approved by the DIBt and awarded the special "U mark" which guarantees you a state-of-the-art fall arrest system.

We are constantly working on updating our portfolio and will soon be able to offer you an anchorage solution bearing this very special U mark whatever your line of work. Whether you are looking for an anchorage point, lifeline system, roof hook or ladder, jib system or guard rail - fall arrest is our profession. ABS Safety products can be applied in a multitude of environments, including roofs, windows, facades, machines, crane ways,

maintenance halls and wind turbines. If we do not already have the solution you are looking for in our program, you can be sure we are working right now on developing the perfect safety concept. Our new Custom Solutions division has been setup to help you design an individual fall arrest solution which is ideally aligned to your particular application. Do not hesitate to call whenever you are confronted with a really tricky problem.

## Explanations ..... 4

Understanding ABS-Lock product numbers ..... 4  
How to choose the correct anchorage point length ..... 4

## Anchorage points for individuals ..... 5-11

ABS-Lock® III ..... 5-6  
ABS-Lock® III-R ..... 7  
ABS-Lock® X-SR ..... 8  
ABS-Lock® X-Trapez, Rivet, T-ALU, Sandwich, Flat ..... 9  
ABS-Lock® X for various surfaces ..... 10-11

## Penetration-free roof anchorage points ..... 12

ABS-Lock® EG250 ..... 12  
ABS-Lock® EG260 ..... 12  
ABS-Lock OnTop® ..... 12

## Safety solutions for pitched roofs ..... 13

ABS-Lock® SD, ABS-Lock® Loop ..... 13  
ABS-Lock® DH05, DH04, DH03-Falz ..... 13

## Anchorage points for securing windows ..... 14

ABS-Lock® I+II ..... 14  
ABS-Lock® I+II accessories ..... 15

## More anchorage points ..... 14-15

ABS-Lock® IV ..... 14  
ABS-Lock® V ..... 14  
ABS-Lock® VI ..... 15  
ABS-Lock® T ..... 15

## Anchorage points for metal seam roofs ..... 16-17

ABS-Lock® Falz IV ..... 16  
ABS-Lock® Falz III, Falz V ..... 17  
Overview of our various seam attachment options ..... 17

## Lifeline systems ..... 18-21

ABS-Lock® SYS I / II ..... 18  
The "SYS Agenda" and our Installation Park ..... 18  
Additional ABS-Lock® SYS I / II components ..... 19

ABS-Lock® SYS III / IV ..... 20  
Other lifeline system components & cable gliders ..... 21

## Vertical lifelines ..... 22

ABS-Lock® SafetyHike ..... 22

## Rail systems ..... 23

ABS-Lock® RailTrax ..... 23

## Window guards and mobile anchorage points ..... 24

ABS FSG / FAS ..... 24  
ABS RunBeam® ..... 24  
ABS door traverse ..... 24  
ABS-Lock® T-Quick ..... 24

## Ladder safety devices ..... 25

ABS LaddFix / ABS LaddQuick ..... 25

## Personal protective equipment ..... 26-27 / 32-33

ABS ASK 8, lanyards, harnesses ..... 26  
PSA sets, storage ..... 27  
ABS B-Lock self-retracting lifelines ..... 32  
ABS TriPole tripod / ABS TriPole PRO winch ..... 33

## Horizontal rail guards ..... 28-30

ABS Guard OnTop, ABS Guard OnTop toeboard, ABS Gate ..... 28-29  
ABS Dome OnTop ..... 30

## Roof safety accessories ..... 31

ABS BorderMark ..... 31  
ABS RoofWay ..... 31

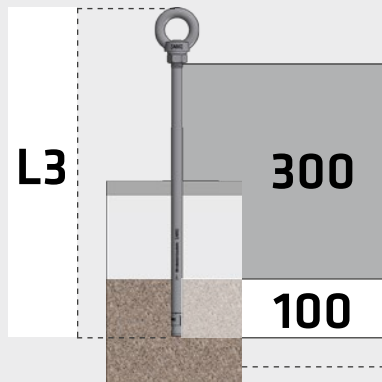
## Accessories ..... 34-35

ABS Therm, sealant collars ..... 34  
Accessories, telescopic rods, lightning conductor clamps ..... 35

## ABS Custom Solutions ..... 36-39

ABS AirAnchor ..... 36-37  
Special solutions for construction work, industry and logistics ..... 38-39

## Understanding ABS-Lock III, X, X-SR, I+II product numbers



<b>L3</b>	<b>-</b>	<b>B</b>	<b>-</b>	<b>300</b>	<b>-</b>	<b>100</b>
Product group e.g. L3 = ABS-Lock III		Installation type/ surface, e.g. B = concrete		Protrusion (mm) = length of anchorage point above the surface		Thread length (mm) = submerged

Should you require a special custom-size component not included in our product list, please contact us. Please also provide appropriate details regarding the installation environment and/or other relevant values

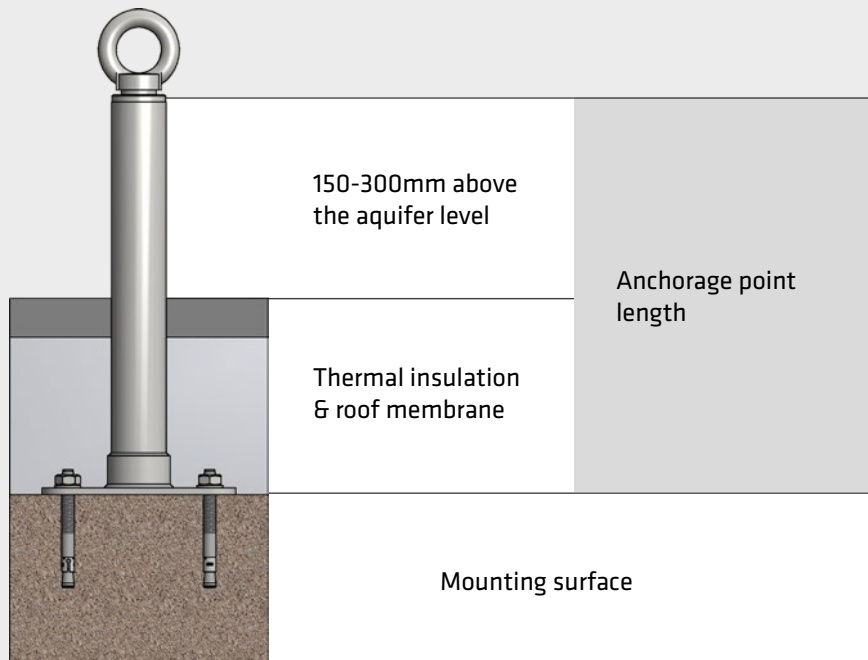
## Explanation: How to choose the correct anchorage point length:

The following general rule applies:



**Thermal insulation depth (incl. roof membrane) + 150mm, rounded up to the nearest 100mm.**

This ensures that the anchorage point protrudes at least 150mm above the aquifer level - but no more than ~300mm.



Example: ABS-Lock X-SR installed in concrete

Sample calculations:

Therm. insulation (incl. membrane):	+150mm	Result - rounded up:
80mm	230mm	300mm
170mm	320mm	400mm
230mm	380mm	400mm
280mm	430mm	500mm

**Note: According to BGR 198 and DIN EN 795, personal fall protection and anchorage equipment must be regularly serviced by a specialist!**



PRODUCT	DESCRIPTION	ORDER NO.
---------	-------------	-----------

<b>ABS-Lock® III</b>	<b>Anchorage points for individuals</b>	<b>Group A</b>
----------------------	---	----------------



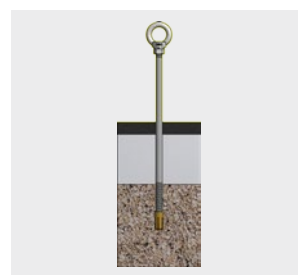
### ABS-Lock® III-B (wall and overhead installation)

Stainless steel anchorage point for cementing into concrete, tested acc. to EN 795 for simultaneous usage by 3 individuals. Also licensed as a lifeline system post acc. to EN 795 class C. Diameter: 16mm.

- For cementing into concrete, grades C20/25 (B25), using special adhesive
- For wall, facade and overhead applications

Note: Prior to installing the device in a wall, pls. contact ABS.

**L3-B-0-100**  
**L3-B-0-XXX**  
**L3-B-50-100**



### ABS-Lock® III-B (flat roofs)

Stainless steel anchorage point for doweling and cementing into concrete, tested acc. to EN 795 for 3 individuals, also suitable as an intern. post in a lifeline system.

- For doweling and cementing into concrete, grades C20/25 (B25)
- For flat roof implementation, post Ø16mm
- Incl. installation materials

Note - lifeline systems: Pls. use our **LX-SR-B-XXX** (page 8) as an end or corner post in a lifeline system.

**L3-B-100-100**  
**L3-B-200-100**  
**L3-B-300-100**  
**L3-B-400-100**  
**L3-B-500-100**  
**L3-B-600-100**  
**L3-B-xxx-100**



### ABS-Lock® III-BE (flat roofs)

Stainless steel anchorage point for concrete, DIBt-licensed and tested acc. to EN 795 for 3 individuals, suitable as an intern. post in a lifeline system.

- For flat concrete roof surfaces, C20/25 (B25) and upwards, post Ø16mm

Note: Pls. use our **LX-SR-B-XXX** (page 8) as an end or corner post in a lifeline system.

**L3-BE-300**  
**L3-BE-400**  
**L3-BE-500**  
**L3-BE-600**

### Stainless steel hammering aid BE

Prevents damage to the thread when the hammer is poorly aimed.

**L3-BE-EH**



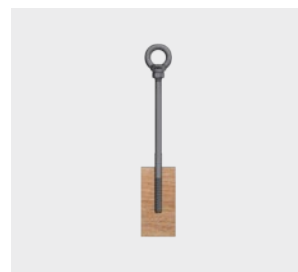
### ABS-Lock® III-ST

Stainless steel anchorage point for bolting onto steel, tested acc. to EN 795, licensed for 3 individuals, also suitable as an intern. post in a lifeline system.

- For steel structures / strut and bracket connections
- With or without protrusion, for roofs, walls, facades and overhead usage
- Incl. installation materials

Note: Pls. consult ABS prior to using the device as an end or corner unit!

**L3-ST-0-100**  
**L3-ST-50-100**  
**L3-ST-100-100**  
**L3-ST-300-100**  
**L3-ST-400-100**  
**L3-ST-500-100**  
**L3-ST-600-100**  
**L3-ST-xxx-100**



### ABS-Lock® III-H

Stainless steel anchorage point for screwing into wood, tested acc. to EN 795, licensed for 3 individuals, also suitable as an intern. post in a lifeline system.

- For load-bearing wooden structures
- Installed using a Ø13mm pre-drilled bore hole
- For beams ≥ 60x120mm - with paneling
- For beams ≥ 100x120mm - without paneling

**L3-H-300**  
**L3-H-400**  
**L3-H-500**  
**L3-H-XXX**



### ABS-Lock® III-HW

Stainless steel anchorage point for insertion through wood, tested acc. to EN 795, licensed for 3 individ., suitable as an intern. post in a lifeline system.

- For load-bearing wooden structures
- Device is inserted through a bore in the wood and then countered
- For beams ≥ 100x120mm
- Incl. installation materials

**L3-HW-0-250**  
**L3-HW-100-300**  
**L3-HW-200-300**  
**L3-HW-300-300**  
**L3-HW-400-300**  
**L3-HW-500-300**  
**L3-HW-xxx-300**



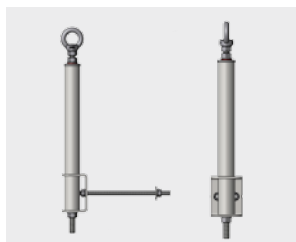
PRODUCT	DESCRIPTION	ORDER NO.
---------	-------------	-----------

**ABS-Lock® III****Anchorage points for individuals****Group A****ABS-Lock® III-SEITL-65**

Stainless steel anchorage point for lateral installation in walls, steel and wooden structures, tested acc. to EN 795 for 3 individuals, end and corner units (lifeline system) can be fitted with a supporting tube (**L3-STÜTZR-XXX**).

- Installed using an angular plate and 2 bore holes
- Distance between the bore holes and the wall: 65mm.
- Incl. installation materials

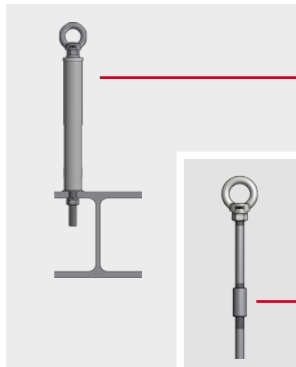
**L3-SEITL-200-65**  
**L3-SEITL-300-65**  
**L3-SEITL-400-65**  
**L3-SEITL-500-65**  
**L3-SEITL-600-65**

**ABS-Lock® III-SEITL-SR**

Stainless steel anchorage point for lateral installation in walls, steel and wooden structures, tested acc. to EN 795 for 3 individuals. Specially reinforced design with supporting tube for optimum load distribution.

- Installed using an angular plate and 2 bore holes
- Ideal as an end or corner post in a lifeline system
- Incl. installation materials

**L3-SEITL-100-SR**  
**L3-SEITL-200-SR**  
**L3-SEITL-300-SR**  
**L3-SEITL-400-SR**  
**L3-SEITL-500-SR**  
**L3-SEITL-600-SR**  
**L3-SEITL-700-SR**

**Supporting tube für ABS-Lock® III**

Stainless steel supporting tube incl. force absorber, for most protruding ABS Lock® III models. Must be used to support the ends and corners in a lifeline system.

- For roofs, walls, facades and overhead systems.
- Support Ø 42mm, XXX = protrusion
- In specific cases also suitable for installation in concrete (facade systems)

**L3-STÜTZR-XXX**

**ABS-Lock® III extension**

100mm/200mm extension, consisting of a stainless steel sleeve and anchorage eyelet, incl. installation materials.

**L3-V-100**  
**L3-V-200**





PRODUCT	DESCRIPTION	ORDER NO.
---------	-------------	-----------

ABS-Lock® III-R	Fitted with a freely rotating ring eyelet	Group A
-----------------	---	---------

**EYELET ROTATES  
A FULL 360°**








**M12 M16 M20**



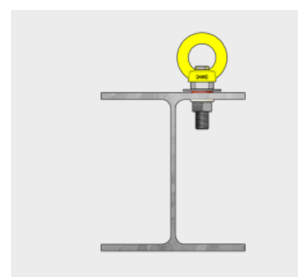
### ABS-Lock® III-R for steel (screwed into place)

Stainless steel anchorage point (1.4404), anchorage eyelet rotates a full 360°, designed for screwing into steel using pre-installed threads, tested acc. to EN 795 for 3 individuals, also EN 50308-tested and **GL-certified**.

Available in 3 different sizes:

- Thread lengths: M12x18mm, M16x24mm, M20x30mm
- Incl. specification plate and installation materials
- Color: RAL 1003 (yellow/powder-coated), more colors = additional charge

**L3-ST-0-18-R-M12  
L3-ST-0-24-R-M16  
L3-ST-0-30-R-M20**

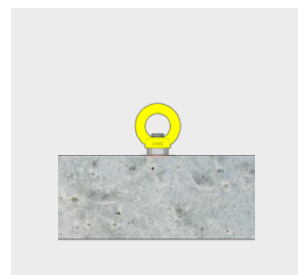


### ABS-Lock® III-R for steel (countered)

Stainless steel anchorage point (1.4404), anchorage eyelet rotates a full 360°, designed for screwing into steel/countering (existing bore hole), tested acc. to EN 795 for 3 individuals, also EN 50308-tested and **GL-certified**.

- One standard size: M16x50mm
- Incl. specification plate and installation materials
- Color: RAL 1003 (yellow/powder-coated), more colors = additional charge

**L3-ST-0-50-R-M16**



### ABS-Lock® III-R for concrete

Stainless steel anchorage point (1.4404), anchorage eyelet rotates a full 360°, designed for cementing into concrete using 2-component adhesive (e.g. Würth WIT-C100, Hilti HIT, Fischer FIS V), tested acc. to EN 795 for 3 individuals, also EN 50308-tested and **GL-certified**.

- One standard size: M16x80mm
- Incl. specification plate, adhesive not included
- Color: RAL 1003 (yellow/powder-coated), more colors = additional charge

**L3-B-0-80-R-M16**





PRODUCT	DESCRIPTION	ORDER NO.
---------	-------------	-----------

**ABS-Lock® X-SR****Reinforced anchorage point with base plate****Group A****ABS-Lock® X-SR for concrete (drive-in dowel)**

Anchorage point, reinforced for usage as an end post in a lifeline system, DIBt-licensed and tested acc. to EN 795 for 3 individuals. Post: Ø42mm. Manuf. from stainless steel (1.4301). Installed using 4 heavy duty dowels.

- For concrete grades  $\geq$  B25, C20/25
- Minimum structure depth: 80mm
- Base plate: 150x150mm
- Bore depth: 65mm
- Incl. installation materials

**LX-SR-B-300**  
**LX-SR-B-400**  
**LX-SR-B-500**  
**LX-SR-B-600**  
**LX-SR-B-700**  
**LX-SR-B-800**  
**LX-SR-B-900**  
**LX-SR-B-1000**

**ABS-Lock® X-SR for concrete (anchor rod)**

Anchorage point, reinforced for usage as an end post in a lifeline system, tested acc. to EN 795 for 3 individuals. Post diameter: Ø42mm. Manufactured completely from stainless steel (1.4301). Installed using 4 cement anchor rods and 2-component adhesive (e.g. Würth WIT-C100, Hilti HIT, Fischer FIS V).

- For concrete grades B25, C20/25 and above
- Base plate: 150x150mm
- Incl. installation materials, adhesive not included

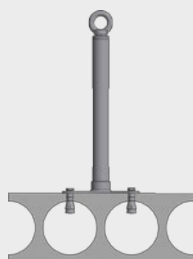
**LX-SR-B-300-A**  
**LX-SR-B-400-A**  
**LX-SR-B-500-A**  
**LX-SR-B-600-A**  
**LX-SR-B-700-A**  
**LX-SR-B-800-A**  
**LX-SR-B-900-A**  
**LX-SR-B-1000-A**

**ABS-Lock® X-SR for steel**

Anchorage point, reinforced for usage as an end post in a lifeline system, tested acc. to EN 795 for 3 individuals. Post diameter: Ø42mm. Manufactured completely from stainless steel (1.4301). Installed using 4 stainless steel bolts and counter nuts.

- For steel structures / strut and bracket connections
- Base plate: 150x150mm
- Incl. installation materials

**LX-SR-ST-300**  
**LX-SR-ST-400**  
**LX-SR-ST-500**  
**LX-SR-ST-600**  
**LX-SR-ST-700**  
**LX-SR-ST-800**  
**LX-SR-ST-900**  
**LX-SR-ST-1000**

**ABS-Lock® X-SR for suspended ceilings**

Anchorage point, reinforced for usage as an end post in a lifeline system, tested acc. to EN 795 for 3 individuals. Post diameter: Ø42mm. Manufactured completely from stainless steel (1.4301). Installed using 4 suspension anchors (expansion dowels), also suitable for the thinnest web section.

- For concrete grades B35, C30/35 and above
- Base plate: 150x150mm
- Incl. installation materials

**LX-SR-HD-300**  
**LX-SR-HD-400**  
**LX-SR-HD-500**  
**LX-SR-HD-600**  
**LX-SR-HD-700**  
**LX-SR-HD-800**

**ABS-Lock® X-SR extension**

Extension tube for all ABS-Lock X-SR posts. Installed in place of the standard anchorage eyelet. Stainless steel (1.4301). Incl. force absorber and pre-determined breaking point. Diameter Ø42mm.

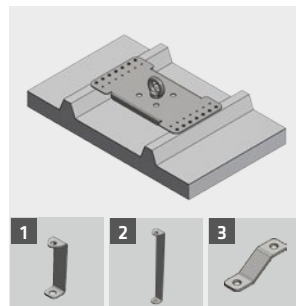
- Incl. installation materials and ring nut
- Standard lengths: 100 and 200mm
- Special lengths: See XXX model.

**LX-SR-VERL-100**  
**LX-SR-VERL-200**  
**LX-SR-VERL-XXX**



PRODUCT	DESCRIPTION	ORDER NO.
---------	-------------	-----------

## ABS-Lock® X Solutions for metal roofs Group A

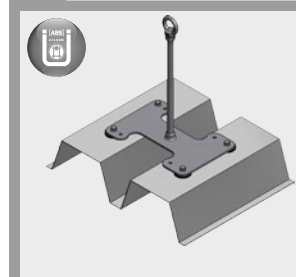


### ABS-Lock® X-Rivet

Stainless steel anchorage point for sandwich panels or trapezoidal sheeting in a negative position, tested acc. to EN 795 for 3 individs. Also suitable as a system post (end, corner or interm.) in a lifeline system acc. to EN 795 class C.

- For steel sheeting  $\geq 0.45\text{mm}$ , base plate  $362 \times 200\text{mm}$
- For upright rib intervals (center to center) of 185 to 250mm and 280 to 333mm
- [1] LX-SW-N-XXX-ZW = interim. post w. ring eyelet, 150mm incl. elongation
- [2] LX-SW-N-XXX-ZW-350 = see LX-SW-N-ZW, with 350mm elongation
- [3] SY-1031-35 = Additional securing tab, e.g. for Tjunctions

LX-SW-N  
LX-SW-N-ZW  
LX-SW-N-ZW-350  
SY-1031-35

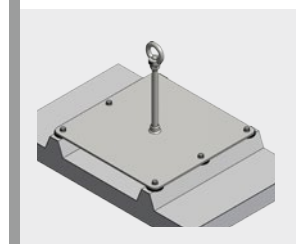


### ABS-Lock® X-Trapez

Stainless steel anchorage point for trapezoidal sheeting installed in a positive or negative pos. DIBt-licensed and tested acc. to EN 795 for 3 individs. Also licensed acc. to EN 795 class C, for use as a corner or end post in a lifeline system in combination w. an optional supporting tube (LX-STÜTZR-XXX, p.11).

- For steel sheeting  $\geq 0.63\text{mm}$ , base plate  $290 \times 200\text{mm}$ , post  $\varnothing 16\text{mm}$
- For upright rib intervals (center to center) of 180 to 250mm
- Incl. installation materials (4 special toggle bolts)

LX-T-150  
LX-T-300  
LX-T-400  
LX-T-500  
LX-T-600

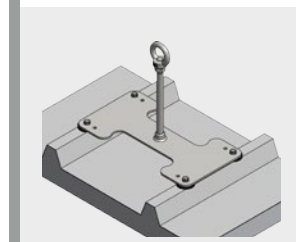


### ABS-Lock® X-T-ALU

Stainless steel anchorage point for alum. trapezoidal sheeting, tested acc. to EN 795 for 3 individs. Licensed acc. to EN 795 class C as a corner or end post in a lifeline syst. in comb. w. an optional supporting tube (LX-STÜTZR-XXX, p.11).

- For aluminum sheeting  $\geq 0.7\text{mm}$ , base plate  $370 \times 370$ , post  $\varnothing 16\text{mm}$
- For upright rib intervals (center to center) of 335mm
- Incl. installation materials (6 special toggle bolts)

LX-T-300-AL



### ABS-Lock® X-Sandwich

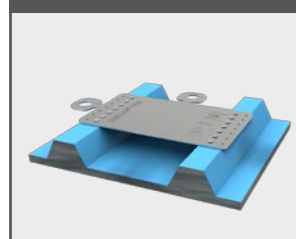
Stainless steel anchorage point for alum. trapezoidal sheeting, tested acc. to EN 795 for 3 individs. Licensed acc. to EN 795 class C as a corner or end post in a lifeline syst. in comb. w. an optional supporting tube (LX-STÜTZR-XXX, p.11).

- For steel sheeting  $\geq 0.5\text{mm}$ , base plate  $372 \times 200$ , post  $\varnothing 16\text{mm}$
- For upright rib intervals (center to center) of 280 to 333mm
- Incl. installation materials (4 special toggle bolts)

LX-SW-150  
LX-SW-300  
LX-SW-400

Fit the above products with an optional supporting tube (LX-STÜTZR-XXX, p.11) for usage as a lifeline system post in acc. with EN 795 class C!

## NEW ABS-Lock® X-Flat



Stainless steel anchorage point for container usage, tested acc. to DIN EN 795 as a single anchorage point for 3 individuals. Extremely flat design, containers can still be stacked on top of each other.

- For steel sheeting  $\geq 0.5\text{mm}$
- For rib intervals (center to center) of 280 to 333mm
- Incl. installation materials (14 blind rivets)

LX-FLAT-333



PRODUCT	DESCRIPTION	ORDER NO.
---------	-------------	-----------

**ABS-Lock® X****Anchorage point with an adjustable base plate****Group A****ABS-Lock® X-B**

Stainless steel anchorage point with base plate, designed for doweling into concrete, tested acc. to EN 795 for simultaneous usage by 3 individuals. Also licensed for usage as a system post in a lifeline system acc. to EN 795 class C when fitted with an opt. supporting tube (LX-STÜTZR-XXX, page 11).

- For concrete ≥ B25, C20/25, base plate: 200x200mm, post Ø16mm
- Incl. installation materials
- Also available without dowel set for cementing applications!

**LX-B-300**  
**LX-B-400**  
**LX-B-500**  
**LX-B-XXX**

**ABS-Lock® X-ST**

Stainless steel anchorage point with base plate, designed for bolting onto a steel structure, tested acc. to EN 795 for 3 individuals. Also licensed for usage as a system post in a lifeline system acc. to EN 795 class C when fitted with an optional supporting tube (LX-STÜTZR-XXX, page 11).

- For steel structures / strut and bracket connections
- Base plate: 200x200mm
- Incl. installation materials (4 bolts with counter nuts)

**LX-ST-150**  
**LX-ST-300**  
**LX-ST-400**  
**LX-ST-500**  
**LX-ST-XXX**

**ABS-Lock® X-Klemm (for clamping)**

Stainless steel anchorage point with base and counter plate, designed for clamping, tested acc. to EN 795 for 3 individuals. Also licensed for usage as a system post in a lifeline system acc. to EN 795 class C when fitted with an optional supporting tube (LX-STÜTZR-XXX, page 11).

- For wooden and concrete beams, steel girders
- Base plate: 200x200mm (more sizes available upon request), post: Ø16mm
- Incl. installation materials (4x V2A threaded bolts)

**LX-KLEMM-150**  
**LX-KLEMM-300**  
**LX-KLEMM-400**  
**LX-KLEMM-500**  
**LX-KLEMM-XXX**

**ABS-Lock® X-Solar**

Stainless steel anchorage point with base and counter plate, designed for clamping onto a solar panel bracket, tested acc. to EN 795 for 1 individual. It is important to check prior to installation whether the substructure is capable of withstanding the required load.

- For aluminum and other profiles up to max. 50x50mm
- Base plate: 100x100mm, post: Ø16mm, length: 150mm
- Incl. installation materials

**LX-SOLAR-150**

**ABS-Lock® X-Durch (push-through)**

Stainless steel anchorage point with base and counter plate, designed for push-through installation, tested acc. to EN 795 for 3 individuals. Also licensed acc. to EN 795 classe C as a system post in a lifeline system.

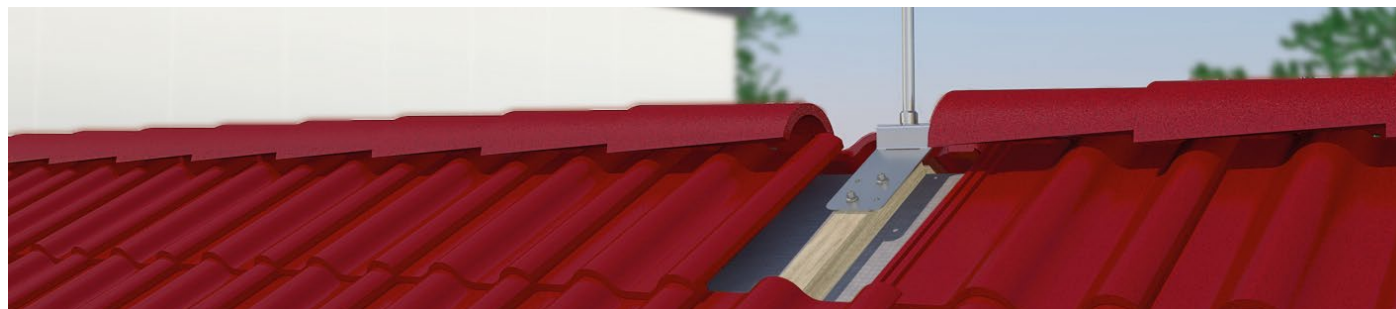
- Can be pushed through walls, hollow profiles, lightweight concrete
- Cross-shaped base plate: 200x200mm, post: Ø42mm
- Incl. installation materials, counter plate and supporting tube

Note: When ordering, pls. state the **ceiling / clamping depth**.

**LX-DURCH-150**  
**LX-DURCH-300**  
**LX-DURCH-400**  
**LX-DURCH-500**  
**LX-DURCH-600**  
**LX-DURCH-XXX**

PRODUCT	DESCRIPTION	ORDER NO.
---------	-------------	-----------

<b>ABS-Lock® X</b>	<b>Solutions for wooden surfaces</b>	<b>Group A</b>
--------------------	--------------------------------------	----------------



### ABS-Lock® X-H-4

Stainless steel anchorage point for wooden structures, tested acc. to EN 795 for 3 indivs. Also licensed for usage as a lifeline system post acc. to EN 795 class C when fitted with a supporting tube (LX-STÜTZR-XXX, below).

- For wooden beams  $\geq 100 \times 120 \text{ mm}$
- Base plate  $100 \times 100 \text{ mm}$ , post  $\varnothing 16 \text{ mm}$
- Incl. installation materials (4 long screws)

**LX-H-150-4**  
**LX-H-300-4**  
**LX-H-400-4**  
**LX-H-500-4**

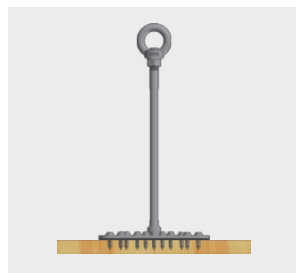


### ABS-Lock® X-H-14+2

Stainless steel anchorage point for wooden panels+rafter anchor, tested acc. to EN 795 for simultaneous usage by 3 individuals. Also licensed for usage as a system post in a lifeline system acc. to EN 795 class C when fitted with an optional supporting tube (LX-STÜTZR-XXX, below).

- For wooden beams  $\geq 60 \text{ mm}$  wide
- Base plate  $200 \times 200 \text{ mm}$ , post  $\varnothing 16 \text{ mm}$
- Incl. installation materials (14 short and 2 long screws)

**LX-H-150-14+2**  
**LX-H-300-14+2**  
**LX-H-400-14+2**  
**LX-H-500-14+2**  
**LX-H-600-14+2**  
**LX-H-XXX-14+2**

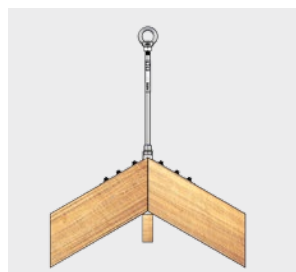


### ABS-Lock® X-H-16

Stainless steel anchorage point for wooden panels, tested acc. to EN 795 for 3 indivs. Also licensed for usage as a lifeline system post acc. to EN 795 class C when fitted with an optional supporting tube (LX-STÜTZR-XXX, below).

- For OSB wood panels  $\geq 18 \text{ mm}$ , wood  $24 \text{ mm}$
- Base plate  $200 \times 200 \text{ mm}$ , post  $\varnothing 16 \text{ mm}$
- Incl. installation materials (16 screws)

**LX-H-150-16**  
**LX-H-300-16**  
**LX-H-400-16**  
**LX-H-500-16**  
**LX-H-600-16**  
**LX-H-XXX-16**



### ABS-Lock® X-First II (apex)

Stainless steel anchorage point for roof apex installation; tested in accordance with EN 795 for simultaneous usage by 3 individuals. Flexible base plate can be manually adjusted to fit any roof pitch.

- Minimum rafter dimensions:  $60 \text{ mm} \times 120 \text{ mm}$
- Minimum rafter bore depth:  $100 \text{ mm}$
- incl. installation materials

**LX-FI2-300**



### Supporting tube for ABS-Lock® X and ABS-Lock® EG250

Stainless steel supporting tube for most ABS-Lock® X and EG250 models, incl. force absorber. Must be used to support the ends and corners in a lifeline system. For roofs, walls, facades and overhead applications.

- Post  $\varnothing 42 \text{ mm}$ , XXX = protrusion
- **LX-STÜTZR-XXX** = for Lock X    ■ **LG-STÜTZR-XXX** = Lock EG250
- **XXX** = various lengths available, depending on the model / type

**LX-STÜTZR-XXX**  
**LG-STÜTZR-XXX**



PRODUCT	DESCRIPTION	ORDER NO.
---------	-------------	-----------

## Penetration-free roof anchorage points

## Group A



### ABS-Lock® EG250

Stainless steel weighted anchor with durable, environmentally-resistant mesh, tested acc. to EN 795 class E, suitable for usage as a lifeline post acc. to EN 795 cl. C when fitted with an opt. supporting tube (LG-STÜTZR-XXX, p. 11).

- Designed to be weighed down using substrate, concrete slabs, gravel etc.
- Single anchorage point: Use a 250 kg load (end/corner post: 360 kg)
- Frame size: 1.5 x 1.5m; incl. protective mats to protect the roof membrane
- Max. roof pitch 3°

LG-1000



### MOBILE



### ABS-Lock® EG260

Mobile stainless steel anchor which is weighed down using portable weights, tested acc. to EN 795 class E for 1 individual. Relocated in just 5-10 minutes.

- Incl. 10 portable weights (each weighing 25 kg)
- Frame dimensions: 1.4 x 1.3m
- Incl. large, weather-proof protective fleece mat
- Total weight: 260 kg
- Max. roof pitch 3°

LG-1001



### ABS-Lock OnTop®

Cross-shaped anchor which is fused onto the upper roof membrane using roof membrane material identical to that already installed. Tested for loads acc. to EN 795 for 3 individuals, also suitable as an interm. post in a lifeline system.

- For tear-resistant bitumen and PVC roof surfaces (reinforced fabric)
- Max. force intake: 12 kN
- Strut length: 1m, standard anchorage post: 300mm
- Roof membrane material not included!
- Max. roof pitch 10° (pls. contact ABS, if your roof pitch is larger)
- No need to reopen the roof membrane later on!

L-OT



PRODUCT	DESCRIPTION	ORDER NO.
---------	-------------	-----------

## Safety solutions for pitched roofs

## Group B



### ABS-Lock® SD

Anchorage device for pitched roofs, designed for attachment to two rafters by screwing through the crossbars. Tested acc. to EN 795 for 3 individuals, also suitable as an end or corner post in a lifeline system.

- Ø42mm, L = 300/400mm, stainless steel, 1m galvanized steel crossbar
- Angle can be adjusted to fit during installation
- Can be aligned to match any tile shape
- Minimum rafter dimensions: 60x120mm, max. rafter interval 920mm

**L-SD-300**

**L-SD-400**



### ABS-Lock® DH05

Stainless steel roof safety hook with a cranked shaft and base plate, serves as an anchorage point for simultaneous usage by 3 individuals and as a ladder hook acc. to EN 795 and EN 517 B.

- Designed for rafter attachment (through the counter battens)
- Can also be used with over-rafter insulation
- Base plate allows flexible installation
- Incl. installation materials

**DH05**



### ABS-Lock® DH04-F (flat design)

Stainless steel roof safety hook with a flat shaft, serves as an anchorage point for 3 individuals and as a ladder hook acc. to EN 795 and EN 517 B.

- Ideal, for example, for slate roofs with paneling installed throughout
- Designed for rafter attachment (through the paneling and counter battens)
- Can also be used with over-rafter insulation
- Incl. installation materials, standard color: Pure Niro

**R** = Red (RAL 3009)

**A** = Anthracite (RAL 7016)

**X** = Special color

**DH04-VA-F**

**DH04-VA-F-R**

**DH04-VA-F-A**

**DH04-VA-F-X**



### ABS-Lock® DH04-OG (cranked design)

Stainless steel roof safety hook with a cranked shaft, serves as an anchorage point for 3 individuals and as a ladder hook acc. to EN 795 and EN 517 B. For tiled roofs, e.g. natural slate etc.

- Ideal for bridging the roof battens on a tiled roof
- Designed for rafter attachment (through the counter battens)
- Can also be used with over-rafter insulation
- Incl. installation materials, standard color: Pure Niro

**R** = Red (RAL 3009)

**A** = Anthracite (RAL 7016)

**X** = Special color

**DH04-VA-OG**

**DH04-VA-OG-R**

**DH04-VA-OG-A**

**DH04-VA-OG-X**



### ABS-Lock® DH03-Falz (for seams)

Stainless steel roof safety hook, designed to be fitted to an ABS-Lock® Falz IV anchorage point for penetration-free installation on a metal seam roof, serves as an anchorage point for simultaneous usage by 3 individuals and as a ladder hook acc. to EN 795 and EN 517 B.

- Ideal for pitched roofs with metal seam panels
- Fitted to an ABS-Lock® Falz IV bracket (prod. PF-4-XX-XXX, page 16)
- Only use in combination with an ABS-Lock® Falz IV bracket

**DH03-VA-F**



### ABS-Lock® Loop

Stainless steel loop, tested acc. to EN 795:2012 as an anchorage device for simultaneous usage by 3 individuals. Withstands loads in any direction. Easily installed by screwing the device onto the load-bearing rafter using just two screws. Once the loop (Ø 5mm) has been installed it is virtually invisible.

- Designed for wooden beams ≥ 60x120mm
- Minimum rafter bore depth: 100mm
- Incl. installation materials

**L-LOOP**



PRODUCT	DESCRIPTION	ORDER NO.
---------	-------------	-----------

**ABS-Lock® I+II****Anchorage points for securing windows****Group A**

## ABS-LOCK® I + II\*

### Removable anchorage points

**ABS-Lock® I**

Stainless steel socket pin. Tested acc. to EN 795 class A+B for usage by 2 individuals. Designed for use in combination with our "ABS-Lock® II" sleeve.  
**Note:** The ABS-Lock® I is removable so that it can be moved from sleeve to sleeve. The cross bar prevents the device from being accidentally opened.

**L1-1000****ABS-Lock® II für concrete / wooden structures**

"ABS-Lock® II" sleeve. Tested acc. to EN 795 class A+B for simultaneous usage by 2 individuals. Designed for use in combination with our "ABS-Lock® I" socket pin. For concrete grades C20/25 (B25) and upwards, also cracked.

■ Available lengths: 100, 150 and 200mm. Other lengths avail. upon request!

**Note:** Please check with ABS prior to installing in masonry.

**L2-B-100****L2-B-150****L2-B-200****ABS-Lock® II for steel**

"ABS-Lock® II" sleeve. Tested acc. to EN 795 class A+B for simultaneous usage by 2 individuals. Designed for use in combination with our "ABS-Lock® I" socket pin, for steel structures.

■ Incl. installation materials

■ 1= Lengths: 100, 150 and 200mm. Other lengths available upon request!

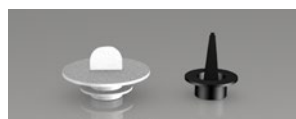
■ 2= Extra short: 30mm, incl. upper hexagonal ring for countering.

**L2-ST-30****L2-ST-100****L2-ST-150****L2-ST-200****Stainless steel protective cap**

Stainless steel (1.4301) protective cap for ABS-Lock® II.

■ Diameter: 40mm

■ Closed system when installed in masonry

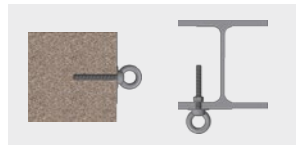
**L2-VA-DECKEL****\*Included with all ABS-Lock® II models**

All ABS-Lock II models are supplied with 1x protective cap (white, Ø 35mm) and 1x protective plug.

**ABS-Lock® I telescopic rod**

Telescopic device designed to hook up or unhook a Lock I socket pin from a Lock II sleeve installed in the ceiling from a standing position.

■ **TELE-1** = 58-98cm ■ **TELE-3** = 160-290cm ■ **TELE-4** = 210-390cm

**L1-TELE-1****L1-TELE-3****L1-TELE-4****ABS-Lock® IV+V****Anchorage point for concrete and steel****Group A****ABS-Lock® IV**

Stainl. steel anchor for **B**=concrete/**ST**=steel, for 1 individual acc. to EN 795.

■ For C20/25 (B25) concrete, ABS special adhesive must be purchased separately!

■ For steel structures, thread Ø12mm, incl. countering device

**L4-B-100****L4-ST-100****ABS-Lock® V**

Stainl. steel anchor for **B**=concrete/**ST**=steel, for 1 individual acc. to EN 795.

■ Small and unobtrusive

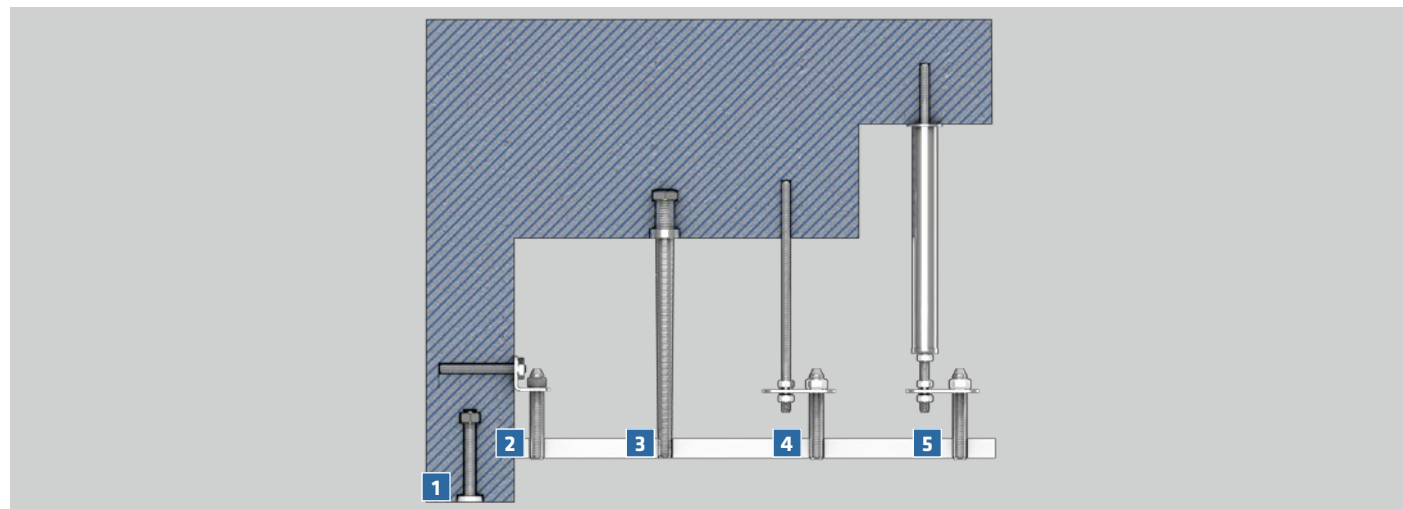
■ Incl. installation materials

■ For C20/25 (B25) concrete and steel structures, thread Ø12mm

**L5-B****L5-ST**

PRODUCT	DESCRIPTION	ORDER NO.
---------	-------------	-----------

<b>ABS-Lock® I+II</b>	<b>Accessories for suspended ceilings</b>	<b>Group A</b>
-----------------------	---	----------------



### Cementing accessory kit

This kit includes a formwork installation aid, a stainl. steel anchor nut (1.4301) for cementing the ABS-Lock II straight into the concrete and 2 anchor screws.

**L2-ZUB-EB**



### Angular bracket for lateral installation

Angular bracket for ABS-Lock® II - designed for lateral installation.

- Incl. installation materials (cement not included)
- Manufactured from stainless steel (1.4301)

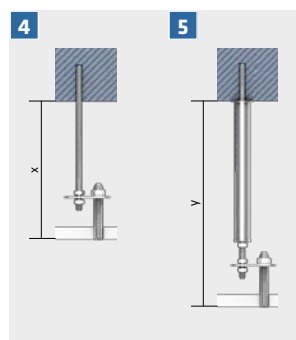
**L2-WINKEL**



### Cementing aid for suspended ceilings

Additional cementing aid, incl. stainless steel nut, allows the ABS-Lock II to be adjusted so that it is flush with the suspended ceiling. Incl. 2 anchor screws.

**L2-ZU-EB-AH**



### Underlying device for suspended ceilings

Designed to bridge a suspended ceiling up to 300mm.

- Incl. tab and fixing materials (cement not included)
- **X** = L2-UK-100 max. length 100mm, L2UK-300 max. length 300mm

**L2-UK-100**

**L2-UK-300**

### Underlying device for suspended ceilings

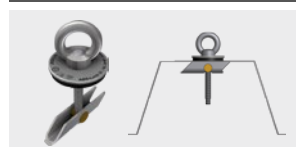
Designed to bridge a suspended ceiling up to 300mm.

L = 50mm + suspended ceiling depth

- Incl. tab, supporting tube and fixing materials (cement not included)
- **Y** = max. length 900mm

**L2-UK-500**

<b>ABS-Lock® VI</b>	<b>Anchorage point for sheet metal roofs</b>	<b>Group A</b>
---------------------	--	----------------



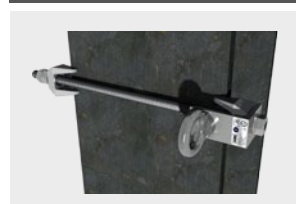
### ABS-Lock® VI

Stainless steel anchor for metal roofs, tested acc. to EN 795 for 1 individual.

- Particularly small and unobtrusive (M8) ■ Suitable for safety nets
- Sheet depth:  $\geq 0.88\text{mm}$  (anchorage points) and  $\geq 0.75\text{mm}$  (safety nets)

**L6-1000**

<b>ABS-Lock® T</b>	<b>Anchorage point for clamping onto a steel girder</b>	<b>Group B</b>
--------------------	---	----------------



### ABS-Lock® T

Anchorage point for clamping permanently to a girder, tested acc. to EN 795

for 3 individuals and as a system post in a lifeline system. Stainless steel angular plate, rod and eyelet (1.4301), girder clamps = hot-galvanized steel.

- For flange widths of 8-16mm,
- For girder widths up to 320mm

**LT**



PRODUCT	DESCRIPTION	ORDER NO.
---------	-------------	-----------

## ABS-Lock® Falz IV

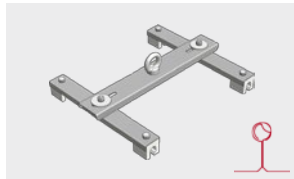
## Metal profile clamps

## Group B



### ABS-Lock® Falz products

#### Penetration-free seam profile solutions



#### ABS-Lock® Falz IV Rundbördelfalz (rounded)

Stainless steel anchorage point with alum. clamps for rounded-edge profiles, tested acc. to EN 795 for 3 individs., also suit. as an ABS lifeline system post.

- For seam intervals of 300-450mm and 420-660mm
- Designed for BEMO, KalZip and similar aluminum profile systems

**PF-4-RB-450**  
**PF-4-RB-660**

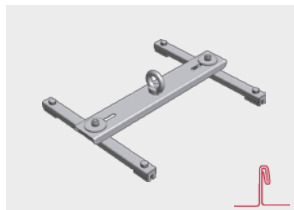


#### ABS-Lock® Falz IV Rundbördelfalz ZW (rounded)

Stainless steel intermediate bracket with alum. clamps for rounded-edge profiles, for ABS lifeline systems. Not suitable as a single anchorage point.

- Can be attached to a single seam using two clamps
- Designed for BEMO, KalZip and similar aluminum profile systems

**PF-4-RB-ZW**



#### ABS-Lock® Falz IV Stehfalz (standing)

Stainless steel anchorage point with alum. clamps for standing seam profiles, tested acc. to EN 795 for 3 individs., also suit. as an ABS lifeline system post.

- For seam intervals of 300-450mm and 420-660mm
- Designed for Rheinzink and similar profile systems
- **ST** = for aluminum, titanium zinc, steel    ■ **CU** = for copper seams

**PF-4-ST-450**  
**PF-4-ST-660**  
**PF-4-CU-450**  
**PF-4-CU-660**

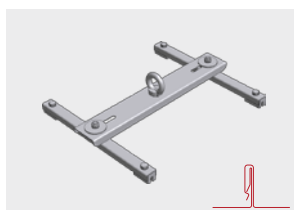


#### ABS-Lock® Falz IV Stehfalz ZW (standing)

Stainless steel intermediate bracket with alum. clamps for standing seam profiles, for ABS lifeline systems. Not suitable as a single anchorage point.

- Can be attached to a single seam using two clamps
- Designed for Rheinzink and similar profile systems
- **ST** = for aluminum, titanium zinc, steel    ■ **CU** = for copper seams

**PF-4-ST-ZW**  
**PF-4-CU-ZW**

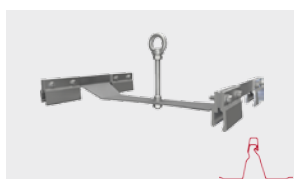


#### ABS-Lock® Falz IV Klip (clamp)

Stainless steel anchorage point with aluminum clamps, tested acc. to EN 795 for 3 individuals, also suitable as an ABS lifeline system post.

- For seam intervals of 300-450mm and 420-660mm
- Also suitable for Kliptec and Snapfalz systems
- **ZW** = intermediate lifeline bracket - not for use as an anchorage point!

**PF-4-KLIP-450**  
**PF-4-KLIP-660**  
**PF-4-KLIP-450-ZW**  
**PF-4-KLIP-660-ZW**



#### ABS-Lock® Falz IV-500

Stainless steel anchorage point designed for clamping onto special profiles (available upon request), tested acc. to EN 795 for 3 individuals, also suitable as an ABS lifeline system post.

- Also suitable for Zambelli Ribroof 500 (width: 500mm)

**PF-4-500**

PRODUCT	DESCRIPTION	ORDER NO.
---------	-------------	-----------

<b>ABS-Lock® Falz III</b>	<b>Metal profile clamps</b>	<b>Group B</b>
---------------------------	-----------------------------	----------------



### ABS-Lock® Falz III

Aluminum anchorage point, equipped with a stainl. steel anchorage eyelet, for clamping onto rounded-edge profiles, tested acc. to EN 795 for 1 individual.

**PF-1003A**

- Can be attached to a seam using one single clamp
- Designed for BEMO, KalZip and similar aluminum profile systems

<b>ABS-Lock® Falz V</b>	<b>Metal profile clamps</b>	<b>Group B</b>
-------------------------	-----------------------------	----------------



### ABS-Lock® Falz V Stehfalz (standing)

Stainless steel anchorage point with aluminum clamps, for standing seam profiles, tested acc. to EN 795 for 3 individuals, fits any seam interval.

**PF-5-ST**  
**PF-5-CU**

- Can be attached to a single seam using two clamps
- Designed for Rheinzink and similar profile systems
- **ST** = for aluminum, titanium zinc, steel    ■ **CU** = for copper seams



### ABS-Lock® Falz V Rundbördelfalz (rounded)

Stainless steel anchorage point with aluminum clamps, for rounded-edge profiles, tested acc. to EN 795 for 3 individuals, fits any seam interval

**PF-5-RB**

- Can be attached to a single seam using two clamps
- Designed for BEMO, KalZip and similar aluminum profile systems

### Rounded-edge seams

Mounting options:

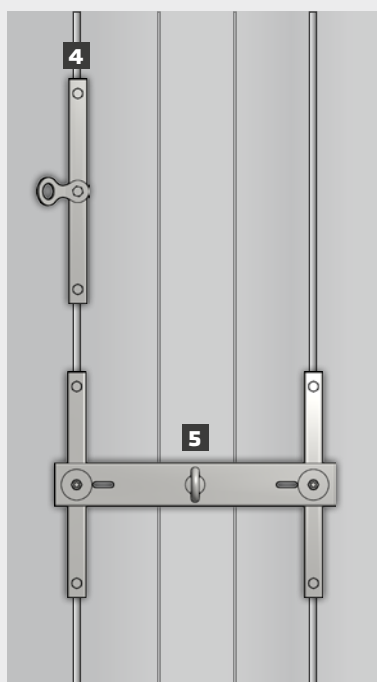
- 1 ABS-Lock® Falz IV-ZW / V
- 2 ABS-Lock® Falz III
- 3 ABS-Lock® Falz IV



### Standing seams

Mounting options:

- 4 ABS-Lock® Falz IV-ZW / Falz V
- 5 ABS-Lock® Falz IV



### Special seam profiles

Mounting options:

- 6 ABS-Lock® Falz IV-500



PRODUCT	DESCRIPTION	ORDER NO.
---------	-------------	-----------

## Standard components

## Group A

## Lifeline systems Ø8mm

ABS-Lock® SYS I - non-traversable posts

ABS-Lock® SYS II - traversable posts



V4A / 1.4401

**ABS special stainless steel cable 8mm**

- Stainless steel cable for ABS-Lock® SYS I and II and SafetyHike lifelines
- Manufactured completely from V4A material (1.4401)
- Weight: 250g/m

SY-1000



V4A / 1.4401

**ABS 8000 tensioning element 8mm**

Stainless steel end bracket with clevis and integrated tensioning device.

- Basic component in all ABS-Lock® SYS I and SYS II lifeline systems
- Attached to the cable onsite

SY-1007



V4A / 1.4401

**ABS 8620 clevis 8mm (molded-on)**

Stainless steel end bracket for ABS-Lock® SYS I and II lifeline systems.

- Supplied pre-molded to one end of the cable
- Manufactured completely from stainless steel

SY-1051



V4A / 1.4401

**ABS 8020 clevis 8mm (not molded-on)**

Stainless steel end bracket for ABS-Lock® SYS I and II lifeline systems.

- Attached to the cable onsite
- Manufactured completely from stainless steel

SY-1008

**The ABS-Lock® SYS agenda:**

**Vital components in all  
ABS-Lock® SYS lifeline systems:**

**End brackets**

**For 80m cable sections:**

- 1x tensioning element w. integr. clevis
- 1x clevis (standard: molded-on)

**For cable sections ≥ 80m:**

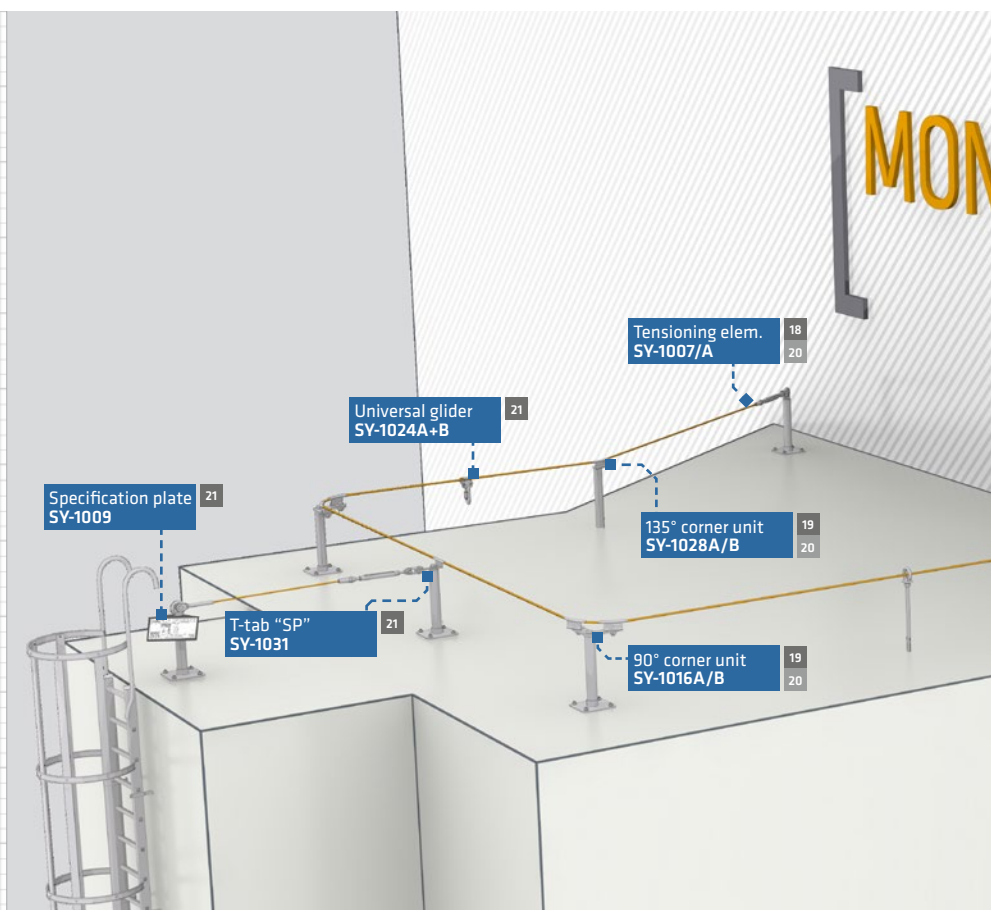
- 2x tensioning elements with integrated clevis for stretches of approx. 150-200m
- depending on the system layout

**Cable and labeling:**

- 1x specification plate
- Required length of cable

**Traversable lifeline system:**

- Traversable corner units
- Traversable intermediate posts
- 1x cable glider per individual





PRODUCT	DESCRIPTION	ORDER NO.
---------	-------------	-----------

## Optional components for glide-over functionality

## Group B



### ABS intermediate cable bracket 8mm

Stainless steel intermediate cable bracket for our ABS-Lock® SYS II system.

- Fully traversable using an ABS universal glider (SY-1024A+B, page 21)
- Incl. installation materials

**SY-1015B**



### ABS SZH-S

Stainl. steel interm. cable bracket, for overhead installation (ABS-Lock® SYS II)

- Fully traversable overhead solution
- Use only in combination with ABS GLEIT-RO (SY-1037, page 21)

**SY-1015-S**



### ABS 90° curve element with carrier plate

Stainless steel curve element with carrier plate, for 90° curves, installed on top of an ABS post or facade corner plate. Fully traversable.

- For convex and concave curves

**SY-1016B**



### ABS 135° curve element

Stainl. steel curve element for semi-circ. curves (135°), installed on top of an ABS post. Fully traversable using an ABS universal glider (SY-1024A+B, p. 21)

- For convex and concave curves

**SY-1028B**



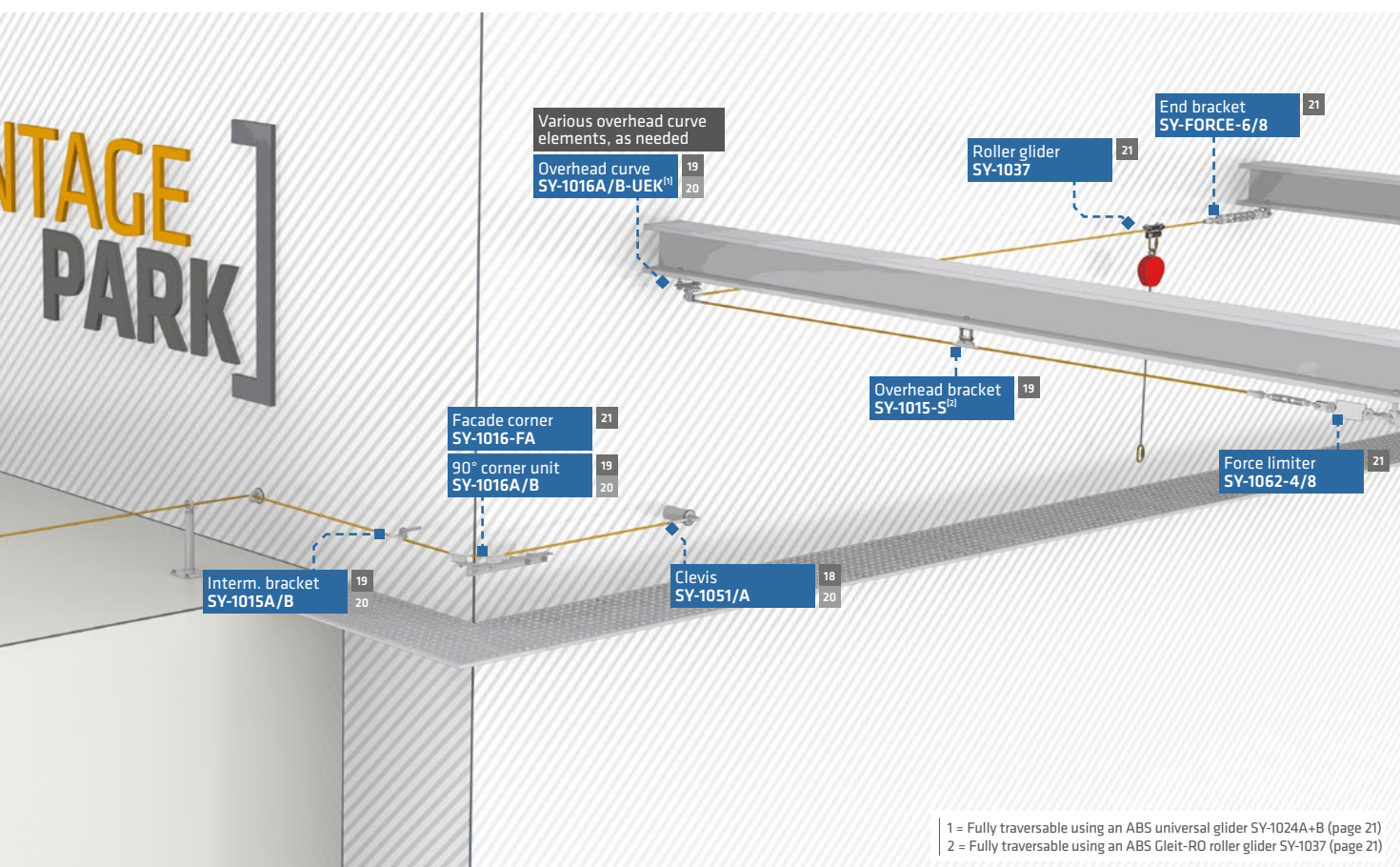
### ABS overhead curve Ø 8mm convex/concave

Stainless steel curve element with carrier plate for 90° curves, installed on top of an ABS post or facade corner plate. Incl. installation materials

- **SY-1016B-UEK-A** = convex
- **SY-1016B-UEK-I** = concave

**SY-1016B-UEK-A**

**SY-1016B-UEK-I**



PRODUCT	DESCRIPTION	ORDER NO.
---------	-------------	-----------

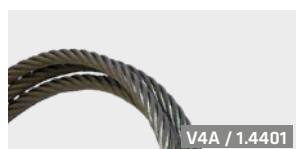
## Standard components

## Group A

## Lifeline systems Ø 6mm

ABS-Lock® SYS III - non-traversable posts

ABS-Lock® SYS IV - traversable posts

**ABS special stainless steel cable 6mm**

- Stainless steel cable for ABS-Lock® SYS III and IV lifeline systems
- Manufactured completely from V4A material (1.4401)
- Weight: 152g/m

**SY-1000A****ABS 8000/6 tensioning element 6mm**

Stainless steel end bracket with clevis and integrated tensioning device.

- Basic component in all ABS-Lock SYS III and SYS IV lifeline systems
- Attached to the cable onsite

**SY-1007A****ABS 8620/6 clevis 6mm (molded-on)**

Stainless steel end bracket for ABS-Lock® SYS III and IV lifeline systems.

- Supplied pre-molded to one end of the cable
- Manufactured completely from stainless steel

**SY-1051A****ABS 8020/6 clevis 6mm (not molded-on)**

Stainless steel end bracket for ABS-Lock® SYS III and IV lifeline systems.

- Attached to the cable onsite
- Manufactured completely from stainless steel

**SY-1008A**

## Optional components for glide-over functionality

## Group B

**ABS intermediate cable bracket Ø6mm**

Stainless steel interm. cable bracket for our ABS-Lock® SYS IV system, Ø6mm.

- Fully traversable using an ABS universal glider (SY-1024A+B, page 21)
- Incl. installation materials

**SY-1015A****ABS 90° curve element with carrier plate**

Stainless steel curve element with carrier plate for 90° curves, installed on top of an ABS post or facade corner plate. Designed for Ø6mm cables.

- For convex and concave curves

**SY-1016A****ABS 135° curve element**

Stainless steel curve element for semi-circular curves (135°), installed on top of an ABS support. Designed for Ø6mm cables.

- For convex and concave curves

**SY-1028A****ABS overhead curve Ø 6mm convex/concave**

Stainless steel curve element with carrier plate for 90° curves, installed on top of an ABS post or facade corner plate. Incl. installation materials.

- **SY-1016A-UEK-A** = convex
- **SY-1016A-UEK-I** = concave

**SY-1016A-UEK-A**  
**SY-1016A-UEK-I**

PRODUCT	DESCRIPTION	ORDER NO.
---------	-------------	-----------

## Optional components

## Group A



### ABS specification plate

Aluminum specification plate for lifeline systems (mandatory acc. to BGR 198 & EN 795).

- SY-1009-F [1] Flat design - hook onto a cable or attach to a wall
- SY-1009: [2] Angular design - attach to a system post

**SY-1009**  
**SY-1009-F**



### ABS SP

Stainless steel connector tab, designed to connect two cable ends to a single post or to create a T-junction in a lifeline system.

**SY-1031**



### ABS force limiter: 8 kN, resp. 4 kN

Stainless steel force limiter, limits the force ensuing from a fall (one individual) to max. 8 kN (SY-1062-8) resp. max 4 kN (SY-1062-4)

- Casing indicates a fall (fall indicator)

**SY-1062-8**  
**SY-1062-4**



### ABS FORCE force absorber

5-in-1 end attachment with clevis, cleverly combines the following features:

- [1.] Tensioning element, [2.] pre-loading tensioning device, [3.] cable clamp,
- [4.] force absorber max. 8 kN, [5.] fall indicator, [6.] pre-load indicator

- **SY-FORCE-6** = for SYS III and IV ■ **SY-FORCE-8** = for SYS I and II
- **A** = Optional: Alarm system connector

**SY-FORCE-6**  
**SY-FORCE-6-A**  
**SY-FORCE-8**  
**SY-FORCE-8-A**



### Bracket for facade corners

Bracket for 90° facade corners - attached laterally to the facade edge. A SY-1016A, resp. B, is fixed in place using the upper holes and leads the cable around the corner. Incl. installation materials for structures ≤ 200mm.

**SY-1016-FA**

## Group B



## Cable gliders for 1 individual



### ABS universal glider

Detachable cable glider made of steel combined with a special bronze alloy, an ABS carabiner hook is used to close the system.

- For Ø6 and Ø8mm stainless steel lifeline systems (ABS-Lock® SYS II and IV)

**SY-1024A+B**

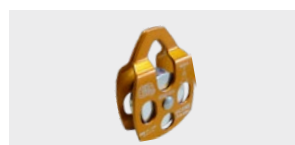


### ABS Gleit-RO (glider)

Stainless steel cable glider with rollers for overhead usage. Glides perfectly along a stainless steel cable. Ideal in comb. with a self-retracting lifeline.

- For **straight** Ø8mm stretches of stainl. steel cable (ABS-Lock® SYS I and II)

**SY-1037**



### ABS traveling trolley

Cable glider with roller, for single cable sections (non-travers. interm. post).

- For our fabric-covered Ø14mm kernmantle cable: ABS ASK 8 (PS-1013-XX)
- For stainless steel cables Ø6 and Ø8mm: ABS-Lock® SYS I, II, III and IV

**PS-ROLL**

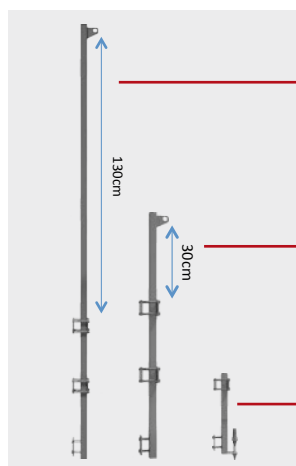


PRODUCT	DESCRIPTION	ORDER NO.
---------	-------------	-----------

## Vertical lifelines

## Group B

## ABS SafetyHike® vertical lifeline

**ABS SafetyHike® upper bracket (long)**

Upper SafetyHike® section with long extension.

- Manufactured completely from stainless steel (1.4301)
- Extension: approx. 130cm beyond the top rung for a larger access area

SH-TOP-L

**ABS SafetyHike® upper bracket (short)**

Upper SafetyHike® section with short extension.

- Manufactured completely from stainless steel (1.4301)
- Extension: approx. 30cm beyond the top rung

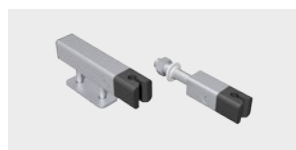
SH-TOP-S

**ABS SafetyHike® end bracket**

Lower ABS SafetyHike® section.

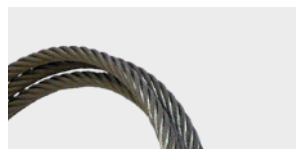
- With integrated tensioning device
- Manufactured completely from stainless steel (1.4301)

SH-END

**ABS SafetyHike® intermediate bracket**

Intermediate cable bracket designed for attachment to a ladder rung.

- Recommended intervals: inner: every 6-7 meters, outer: every 5-6 meters
- For clamping ■ **M16** = screwed on or through

SH-ZW  
SH-ZW-M16**ABS SafetyHike® special stainless steel cable**

Stainless steel cable for the ABS SafetyHike® vertical lifeline system.

- Stainless steel (V4A/1.4401) cable, diameter: Ø8mm
- Weight: 250g/m

SY-1000

**ABS 8620 clevis 8mm (molded-on)**

Stainless steel (V4A/1.4401) end bracket for ABS-Lock® SYS I and II lifeline systems and the ABS SafetyHike® vertical lifeline system.

- Supplied pre-molded to one end of the cable

SY-1051

**ABS SafetyHike® vertical lifeline glider**

Vertical lifeline glider for the ABS SafetyHike® system, with integrated, extra-short lanyard fall absorber and carabiner hook, designed for 1 individual.

- Device locks automatically in the case of a fall

SH-GLEIT

**ABS specification plate**

Aluminum specification plate for lifeline systems (mandatory acc. to BGR 198 & EN 795).

- SY-1009-F [1] Flat design - hook onto a cable or attach to a wall
- SY-1009: [2] Angular design - attach to a system post

SY-1009-F  
SY-1009

## Group A

## Group B

## Group A

PRODUCT	DESCRIPTION	ORDER NO.
---------	-------------	-----------

## Rail system

## Group B



### ABS RailTrax® rail 3 meters

Stainless steel rail (1.4301), length = 3000mm (+/- 2mm), holes on both sides allow additional rail sections to be added or are used to close a section. Tested acc. to EN 795 for max. 4 individuals. **Special lengths available upon request!**

**RT-S-3000**  
**RT-S-3000-A4**



### ABS RailTrax® horizontal curve element

Stainless steel rail curve element (1.4301) for overhead applications and flat roof installations. Important: Check the required radius!

■ **RT-HK-90** = Fixed radius 220mm/90° ■ **RT-HK-XXX** = customized radius

**RT-HK-90**  
**RT-HK-90-A4**  
**RT-K-XXX**  
**RT-K-XXX-A4**



### ABS RailTrax® rail glider

Rail glider for 1 individual, designed for the ABS RailTrax® system.

■ Manufactured completely from V4A material (1.4571)  
■ Maximum environmental resistance for long-term usage

**RT-GLEIT**



### ABS RailTrax® intermediate anchor connector

Intermediate bracket for the ABS RailTrax® system, designed for joins, i.e. connecting two rail sections, manufactured completely from 1.4301 material.

■ Incl. installation materials: **B** = concrete dowels, **ST** = for steel installation  
■ **RT-ZW-V-100** = 100mm tab for facades and attachment to an ABS post

**RT-B-ZW-V**  
**RT-B-ZW-V-A4**  
**RT-ST-ZW-V**  
**RT-ST-ZW-V-A4**  
**RT-ZW-V-100**  
**RT-ZW-V-100-A4**



### ABS RailTrax® 4-hole connector

Rail connector, not attached to the actual structure, made of 1.4301 material.

**RT-VB**  
**RT-VB-A4**

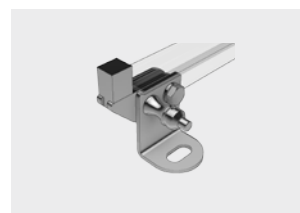


### ABS RailTrax® intermediate anchor

As described above, but for cases where the rail joints do not match the attachment points, manufactured completely from 1.4301 material.

■ Incl. installation materials: **B** = concrete dowels, **ST** = for steel installation  
■ **RT-ZW-100** = 100mm tab for facades and attachment to an ABS post

**RT-B-ZW**  
**RT-B-ZW-A4**  
**RT-ST-ZW**  
**RT-ST-ZW-A4**  
**RT-ZW-100**  
**RT-ZW-100-A4**



### ABS RailTrax® end stop

End bracket for the ABS RailTrax® system, with securing pin to allow rail gliders to be attached and removed, manuf. completely from 1.4301 material.

■ Incl. installation materials: **B** = concrete dowels, **ST** = for steel installation  
■ **RT-END-100** = 100mm tab for facades and attachment to an ABS post

**RT-B-END**  
**RT-B-END-A4**  
**RT-ST-END**  
**RT-ST-END-A4**  
**RT-END-100**  
**RT-END-100-A4**



### ABS specification plate

Aluminum specification plate for lifeline systems (mandatory acc. to BGR 198 & EN 795).

■ SY-1009-F [1] Flat design - hook onto a cable or attach to a wall  
■ SY-1009: [2] Angular design - attach to a system post

**SY-1009-F**  
**SY-1009**

## Group A

PRODUCT	DESCRIPTION	ORDER NO.
<b>ABS FSG</b>	<b>Mobile window guard</b>	<b>Group B</b>
	<b>ABS FSG window guard</b> Mobile window guard system which can be moved from window to window. Includes 2 crossbars. <ul style="list-style-type: none"> <li>■ FSG01 = 400-910mm / 6.9 kg</li> <li>■ FSG02 = 770-1720mm / 5.2 kg</li> <li>■ FSG03 = 490-730mm / 2.9 kg</li> <li>■ FSG04 = 700-1160mm / 3.9 kg</li> <li>■ FSG05 = 1110-1570mm / 4.9 kg</li> </ul>	<b>FS-FSG01</b> <b>FS-FSG02</b> <b>FS-FSG03</b> <b>FS-FSG04</b> <b>FS-FSG05</b> 
<b>ABS FAS</b>	<b>Window guard with guide sleeves</b>	<b>Group B</b>
	<b>ABS FAS window guard</b> Mobile window guard system which is installed in the window frame using pre-installed guide sleeves. Price per crossbar. <b>Adjustment range / weight:</b> <ul style="list-style-type: none"> <li>■ FAS01 = 190-620mm / 1.2 kg</li> <li>■ FAS02 = 615-1610mm / 1.8 kg</li> <li>■ FAS03 = 1550-2400mm / 2.5 kg</li> </ul>	<b>FS-FAS01</b> <b>FS-FAS02</b> <b>FS-FAS03</b>
 <div> <div>S</div> <div>B</div> </div>	<b>Window guide sleeves S &amp; B</b> <ul style="list-style-type: none"> <li>■ <b>S</b> = Standard guide sleeve for FAS window guard, <b>W</b> = white, <b>R</b> = red</li> <li>■ <b>B</b> = Guide sleeve for extruded profiles, <b>W</b> = white, <b>R</b> = red</li> </ul>	<b>FS-FH-S-W</b> <b>FS-FH-S-R</b> <b>FS-FH-B-W</b> <b>FS-FH-B-R</b>
<b>Mobile anchorage points</b>		<b>Group B</b>
		
	<b>ABS RunBeam</b> Roller-mounted girder glider, tested acc. to EN 795 for 1 individual, manuf. from stainless steel. Glides smoothly along an overhead steel girder. <ul style="list-style-type: none"> <li>■ For long-term installation and usage, also suitable for outdoor applications</li> <li>■ Available for 9 girder widths (adjustable): <b>RB-XXX/XXX</b> = XXXmm/XXXmm</li> </ul>	<b>RB-120</b> <b>RB-140/180</b> <b>RB-160/200</b> <b>RB-220/260</b> <b>RB-240/280</b>
Other sizes available upon request		
	<b>ABS door traverse</b> Mobile "door traverse" anchor for door openings. Tested acc. to EN 795. This door traverse is easily installed - no tools required. <ul style="list-style-type: none"> <li>■ For all door frames with a max. opening of 1100mm (1 individual)</li> <li>■ When used by 2 individuals simultaneously, max. door opening: 900mm</li> <li>■ Contact surfaces covered in synthetic material to protect the structure</li> <li>■ Weight: 10 kg</li> </ul>	<b>PS-1069</b>
	<b>ABS-Lock® T-Quick</b> Mobile anchorage point for steel girders, tested acc. to EN 795 for 1 individual, manufactured completely from aluminum. Easy to use - can be installed or removed in a matter of seconds. <ul style="list-style-type: none"> <li>■ Adjustable to fit steel girder flange widths of 95 to 400mm</li> <li>■ Ultralight design, weighs a mere 1.5 kg</li> </ul>	<b>LT-Q</b>



PRODUCT	DESCRIPTION	ORDER NO.
---------	-------------	-----------

## ABS LaddFix und LaddQuick for all ladders!

### ABS LaddFix

### Permanently installed ladder safety device

Group B



#### ABS LaddFix

Ladder safety device, provides additional protection by preventing a ladder from tipping. For long-term usage, also suitable for outdoors, hot galvanized steel.

LF-FIX-B

LF-FIX-D

- Can be doweled into a wall or masonry
- Can be clamped onto a rain gutter
- Can be attached to a roof parapet - please consult ABS first
- For indoor and outdoor usage
- **B = for concrete**      ■ **D = for a rain gutter**

### ABS LaddQuick

### Temporary ladder safety device

Group B

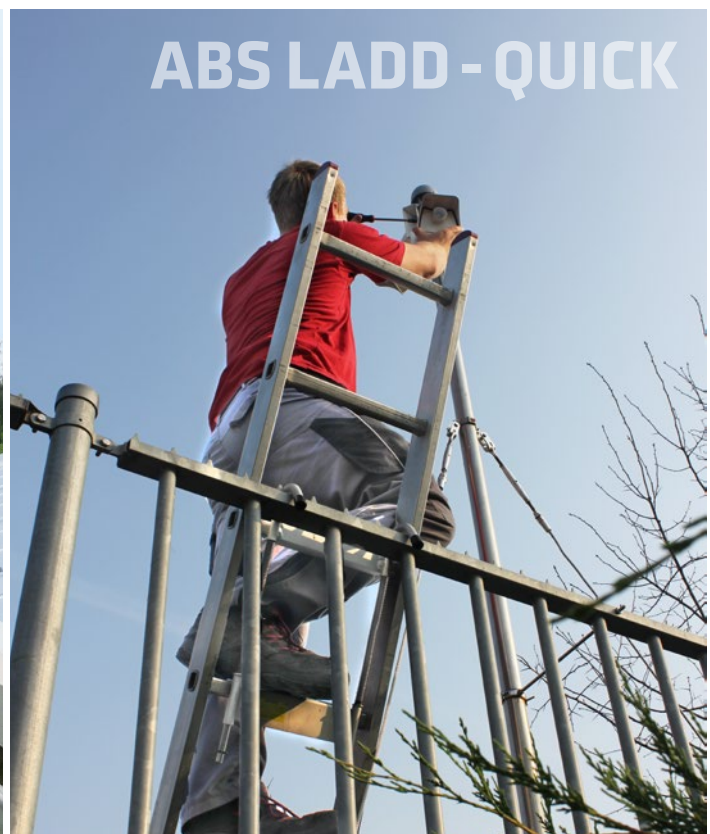


#### ABS LaddQuick

Temporary ladder safety device, provides additional protection by preventing a ladder from tipping. Spring mechanism allows device to be easily clamped between two rungs and then hooked onto the rain gutter.

LQ-QUICK

- Rubberized hooks protect the gutter from scratches
- Temporary: Can be connected up and removed as required
- Material: Aluminum



PRODUCT	DESCRIPTION	ORDER NO.
---------	-------------	-----------

## Personal protective equipment

Group B



**ABS ASK 8**  
Temporary lifeline system



### ABS ASK 8

Temporary lifeline system, tested acc. to EN 795 for simultaneous usage by 4 individuals. Ideal for use on flat and pitched roofs.

- High-quality kernmantle cable, Ø 14mm
- Incl. cable tensioner and 1 (2/3) freely-moving, spliced carabiner hooks
- Use in combination with our ABS traveling trolley (PS-ROLL, page 21), also ideal for usage with a self-retracting lifeline!
- **PS-1013-15** = 15m, **PS-1013-23** = 23m, **PS-1013-30** = 30m

**PS-1013-15**  
**PS-1013-23**  
**PS-1013-30**

## Connectors

Group B



### ABS VB BFD

Connector made of Ø12mm kernmantle cable, with an integrated fall absorber and a carabiner at each end.

- Sharp edge-tested
- Licensed acc. to EN 354 and EN 355
- Available lengths: 1m, 1.5m, 2m

**PS-VB-1.0**  
**PS-VB-1.5**  
**PS-VB-2.0**



### ABS VB BFD SK

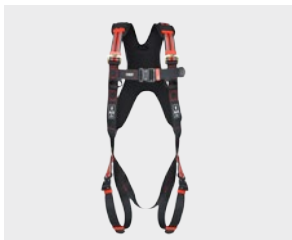
Connector made of Ø12mm kernmantle cable, with an integr. rope shortener and fall absorber. Can be adjusted perfectly acc. to the distance to the edge.

- Sharp edge-tested
- Licensed acc. to EN 353-2 and EN 355
- Available lengths: 5m, 10m, 15m, 20m

**PS-VB-SK-5**  
**PS-VB-SK-10**  
**PS-VB-SK-15**  
**PS-VB-SK-20**

## Safety harnesses

Group B



### ABS Comfort safety harness

Adjustable universal harness (certified acc. to EN361). Hook-up points at the front and back. Low-maintenance, suitable for all types of roof work.

- With back and shoulder padding
- Equipped with practical "click" quick release fasteners
- Adjustable straps (shoulder and leg straps)
- For loads of up to 136kg

**PS-COMFORT**



### ABS Comfort safety jacket

Safety harness sewn into a safety jacket, Hook-up eyelets at the front and back. Signal color is ideal for poor visibility conditions/in the vicinity of traffic (abseiling into manholes etc.)

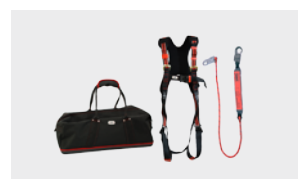
- "Click" fasteners on the leg straps, large back pocket
- Adjustable straps (shoulder and leg straps)
- EN361-certified
- For loads of up to 136kg

**PS-COMFORT-WEST**

PRODUCT	DESCRIPTION	ORDER NO.
---------	-------------	-----------

## PPE sets according to EN 354, 355 and 361

## Group B

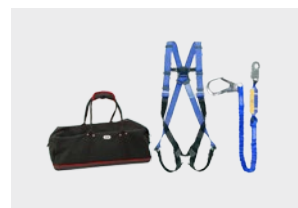


### ABS window cleaner's set

Set includes an ABS Comfort safety harness, a 2m lanyard and an integrated force absorber. Incl. storage option (see below).

- ABS Comfort safety harness: suitable for loads of up to 136kg
- Ideal for window-cleaning work

PS-FP-SET-x



### ABS scaffolder's set

Set includes a safety harness and an elasticated lanyard: 1.5m - 2m (fully stretched), a force absorber and a sewn-in 0.5m extender with a Velcro strip. This can be used to increase the total length of the lanyard to 2.5 m! Incl. storage option (see below).

- Ideal for scaffolding work
- Also certified acc. to EN 363!

PS-GB-SET-x



### ABS roofer's set

Set incl. an ABS Comfort safety harness and a lanyard with rope shortener. Available lengths: Max. 5, 10, 15 and 20 m. Incl. tape sling and storage option (see below). Rope shortener allows rope to be adjusted as required.

- ABS Comfort safety harness: Suitable for loads of up to 136kg
- Ideal for work on all roof types

PS-DD-SET-5-x  
PS-DD-SET-10-x  
PS-DD-SET-15-x  
PS-DD-SET-20-x



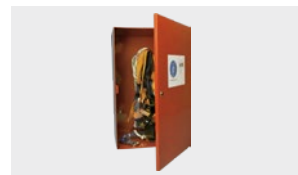
All sets include a storage option, please state when ordering:

- Large shoulder bag [1]
- Steel plate carrying case [2]

x = T  
x = K

## Storage lockers

## Group B



### ABS Care+ large (for indoor usage)

Metal PPE storage locker, painted red, with PPE label.

- Size: 650x400x350mm, can store 1 set + accessories (ASK 8, helmet etc.)
- Lockable, incl. 2 keys
- Drying rod inside

PS-1015





PRODUCT	DESCRIPTION	ORDER NO.
---------	-------------	-----------

## ABS Guard OnTop Horizontal guard rail

Group B

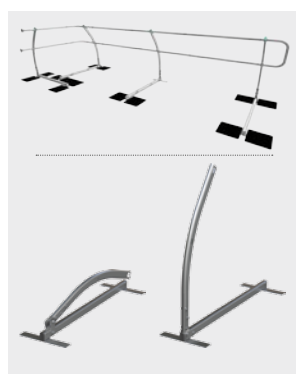
### ABS Guard OnTop

Guard rail designed for penetration-free installation on flat roofs with a pitch of up to 10°. Compact, ultralight and extremely easy to install









### ABS Guard OnTop

High-quality guard rail (alum./stainless steel), designed for penetration-free installation. Licensed acc. to DIN EN 14122-3 and DIN EN 13374, roof pitch: ≤ 10°. 3 models avail.: For fusing onto a bitumen membrane (SG2-GUARD-B), for fusing onto PVC (SG2-GUARD-F) or for use with weights (SG2-GUARD-G).

- Max. dist. betw. the posts: Bitumen/PVC: 2.5m; using weights: Max. 2m
- Bitumen/PVC: Low roof load: Less than 5kg per m, 3kg per post
- The bitumen model is supplied with corresponding patches (300x300mm)
- PVC patches are **not** included (need to be prepared onsite!)

**SG2-GUARD-B**  
**SG2-GUARD-F**  
**SG2-GUARD-G**



## Accessories for corners, end brackets etc.



### ABS St-W90

90° corner element for hand and knee rails.

- Manufactured completely from aluminum

**SG2-ECKE-FIX**



### ABS St-Var

Adjustable corner element which can be individually adjusted to fit the corner or to compensate for variations in height.

- Fully adjustable angle

**SG2-ECKE-VAR**



### ABS end bar

End bar for free-standing systems, made of aluminum.

- Closes the system by connecting the chest and knee rails

**SG2-ENDBÜGEL**



### ABS St-Wand (wall unit)

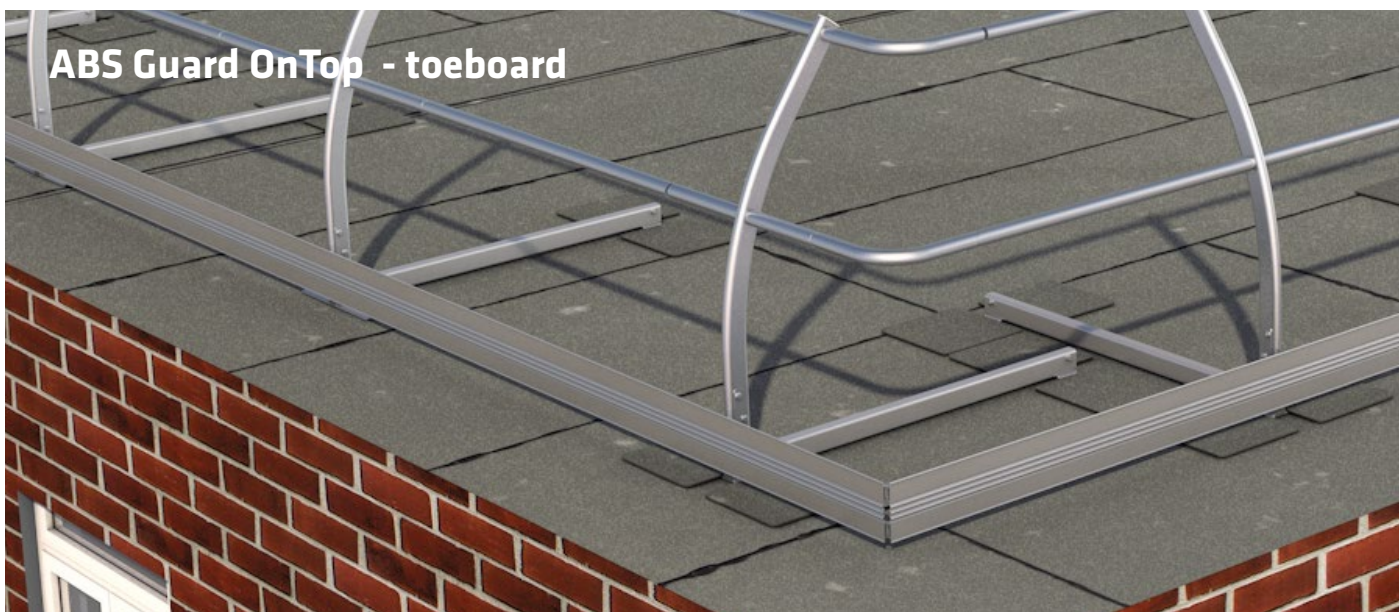
End bracket for attaching a hand or knee rail to a wall.

- Manufactured completely from aluminum
- Dowels **not** included

**SG2-WAND**

PRODUCT	DESCRIPTION	ORDER NO.
---------	-------------	-----------

ABS Guard OnTop	Horizontal guard rail	Group B
-----------------	-----------------------	---------



### ABS Guard OnTop - toeboard

Optional aluminum toeboard for ABS Guard OnTop guard rail system, 15cm high. This additional rail is required, if the roof parapet is less than 100mm high or in cases where the edge is not otherwise secured.

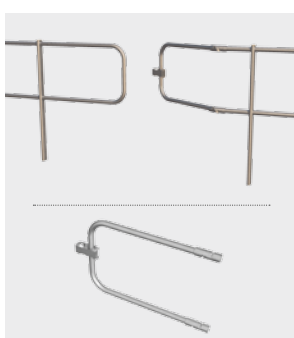
SG2-FL-3



### ABS Guard OnTop - foot rail accessories (included in the price)



ABS Guard OnTop	Horizontal guard rail	Group B
-----------------	-----------------------	---------



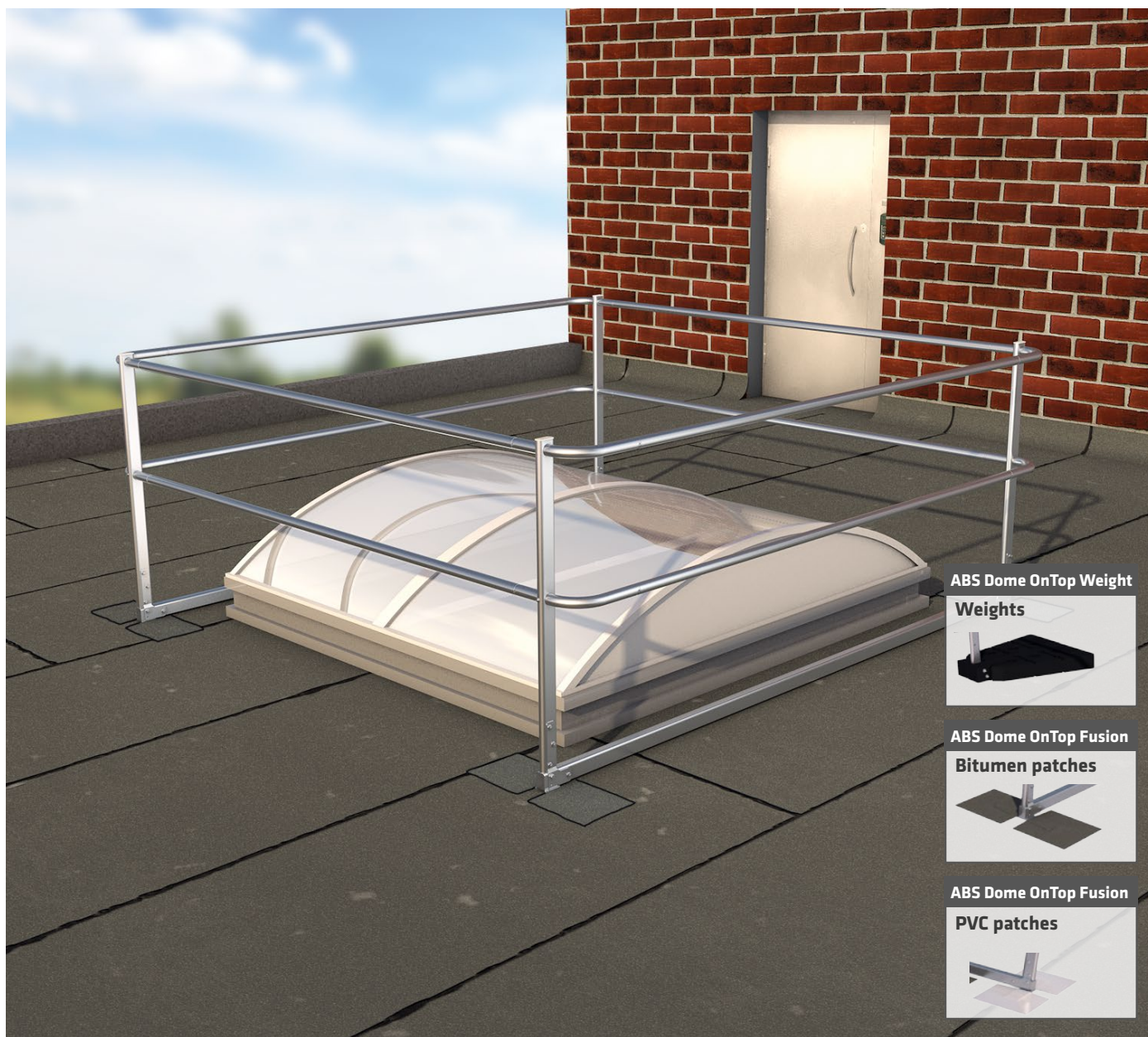
### ABS Gate

Optional door section for the ABS Guard OnTop guard rail systems.

SG2-GATE



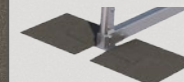
PRODUCT	DESCRIPTION	ORDER NO.
---------	-------------	-----------

**ABS Dome OnTop****Horizontal guard rail for domed rooflights****Group B**

**ABS Dome OnTop Weight  
Weights**



**ABS Dome OnTop Fusion  
Bitumen patches**



**ABS Dome OnTop Fusion  
PVC patches**

**ABS Dome OnTop**

Penetration-free fall protection system for securing a domed rooflight acc. to DIN EN 14122-3 and DIN EN 13374 for roof pitches of up to 10°. 3 models: For fusing onto a bitumen membrane, for fusing onto PVC or for use with weights.

■ The bitumen model incl. patches, PVC patches must be prepared onsite

SG2-DOME-XX-X = Please enter B (bitumen), F (PVC) or G (weights) according to the model you wish to purchase

SG2-DOME-XX-X = The two digits stand for the length of the side of the domed rooflight in meters. The ABS Dome OnTop itself is 0.5m longer.

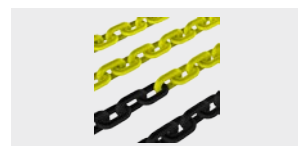
**SG2-DOME-1,5-X**  
**SG2-DOME-2-X**  
**SG2-DOME-2,5-X**





PRODUCT	DESCRIPTION	ORDER NO.
---------	-------------	-----------

<b>ABS BorderMark</b>	<b>Barrier chain (for cordoning off/markings)</b>	<b>Group B</b>
-----------------------	---	----------------



### ABS BorderMark chain Ø8mm

Weather-proof synthetic chain.

- Alternating bright yellow/black
- Chain Ø8mm

**BM-8-G**



### ABS BorderMark post

Stainless steel post (1.4301), complete with pedestal weight and protective mat to protect the roof membrane, UV-resistant synthetic weight.

- Post: Height = 900mm, Ø 42mm, max. interval 5m

**BM-PFOST**



### ABS BorderMark gate post

Stainless steel post, comes with a UV-resistant synthetic weight and protective mat to protect the roof membrane. Includes a synthetic carabiner hook for attaching/detaching the chain.

**BM-PFOST-T**



### ABS BorderMark warning plate

Aluminum plate with warning message and symbols, incl. installation materials.

- "Stop! Authorized personnel only" ■ "Access to fall danger zone"
- "Mandatory use of PPE equipment from this point"

**BM-SCHILD**

<b>ABS RoofWay</b>	<b>Roof walkway marker tiles</b>	<b>Group B</b>
--------------------	----------------------------------	----------------

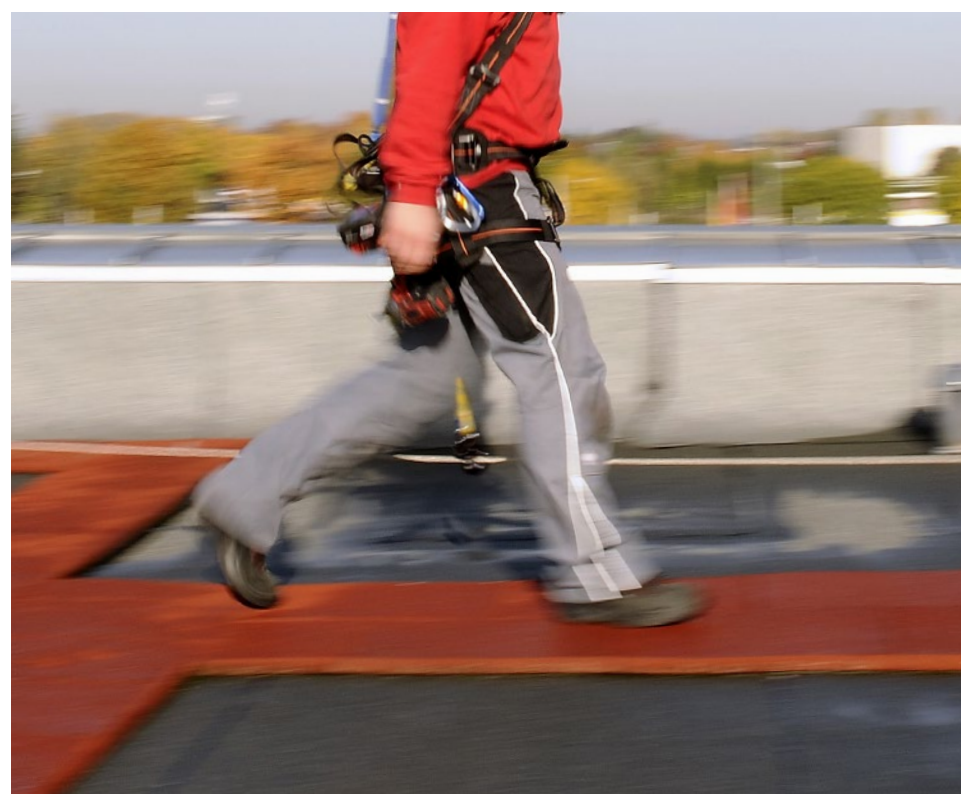


### ABS RoofWay

Anti-slip walkway tile for securing and marking a walkway on a roof surface, with a fleece backing.

- For PVC and bitumen roofs ■ Dimensions 50x50x3cm
- Installed using plug-in connectors:
  - **RW-R** = Plug-in connectors along the front and rear edges
  - **RW-R-4** = Plug-in connectors on all 4 sides for increased stability and for creating a two-lane system or junction!

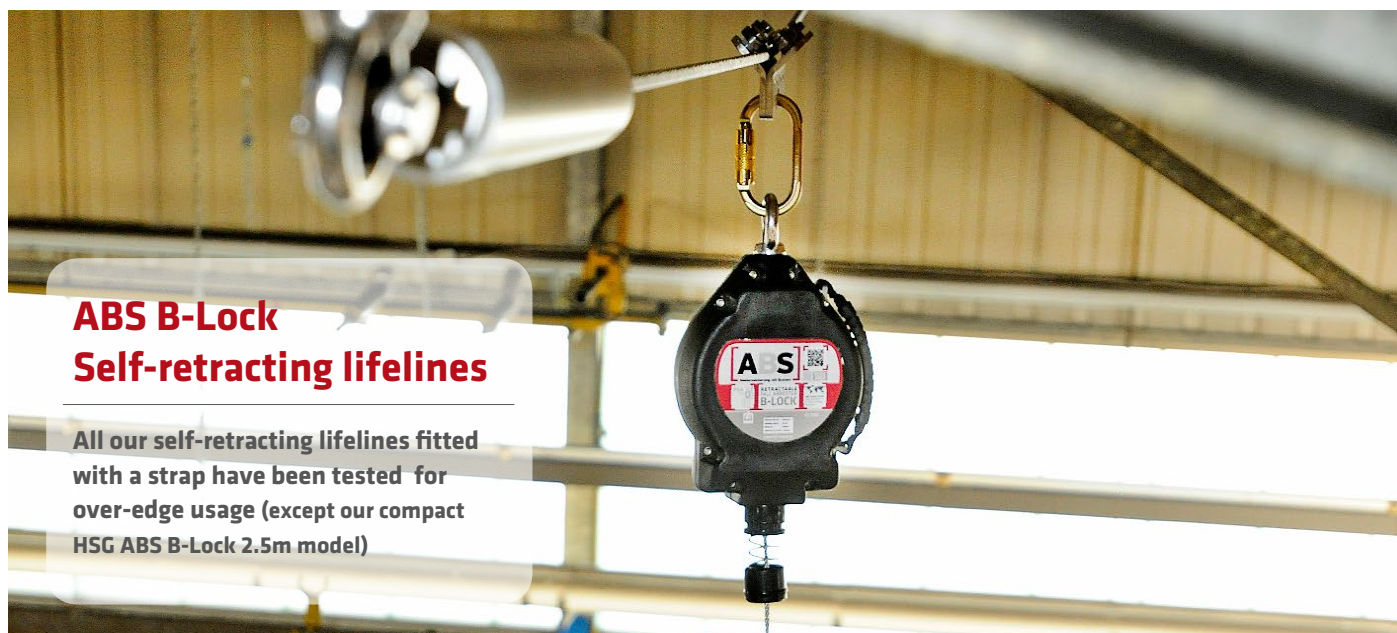
**RW-R**  
**RW-R-4**



PRODUCT	DESCRIPTION	ORDER NO.
---------	-------------	-----------

## Personal protective equipment

## Group B



### ABS B-Lock Self-retracting lifelines

All our self-retracting lifelines fitted with a strap have been tested for over-edge usage (except our compact HSG ABS B-Lock 2.5m model)



#### ABS B-Lock 2m

Extremely light self-retracting lifeline, ideal for being transported along by the user (chest or dorsal eyelet attached to the safety harness).

- 50mm strap, length 2 m, polyamide material, strength: 15kN
- Lightweight, extremely compact design
- Upper and lower rotating brackets prevent the strap from twisting
- Incl. fall indicator attached to the carabiner

**PS-BL-B-2**



#### ABS B-Lock 2.5m

Extremely compact self-retracting lifeline with integrated force absorber. The casing design allows this device to be easily transported along by the user.

- 50mm strap, length 2.5 m, polyamide material, strength: 15kN
- Compact casing for easy transport by the user (chest or dorsal eyelet)
- Upper rotating bracket
- Lanyard fall absorber and carabiner snap hook

**PS-BL-B-2,5**



#### ABS B-Lock 3.5m

Self-retracting lifeline with steel cable (= S) or strap (= B), extendable up to 3.5 m, robust, specially designed synthetic casing.

- Choice of a 25mm polyamide strap, capable of withstanding 15 kN, or a steel cable, Ø4.8mm, galvanized steel, capable of withstanding 12 kN
- Carabiner snap hook with rotating bracket prevents the cable/strap from twisting
- Incl. fall indicator attached to the carabiner

**PS-BL-B-3,5**

**PS-BL-S-3,5**



#### ABS B-Lock 6 - 30m

Universal self-retracting lifeline with a synthetic casing, equipped with either a steel cable (= S) or strap (= B), available in various lengths from 6 to 30m.

- Choice of a 25mm polyamide strap, capable of withstanding 15 kN, or a steel cable, Ø4.8mm, galvanized steel, capable of withstanding 12 kN
- Incl. fall indicator attached to the carabiner
- Upper and lower rotating brackets

**PS-BL-B-6**

**PS-BL-B-12**

**PS-BL-S-6**

**PS-BL-S-10**

**PS-BL-S-15**

**PS-BL-S-20**

**PS-BL-S-25**

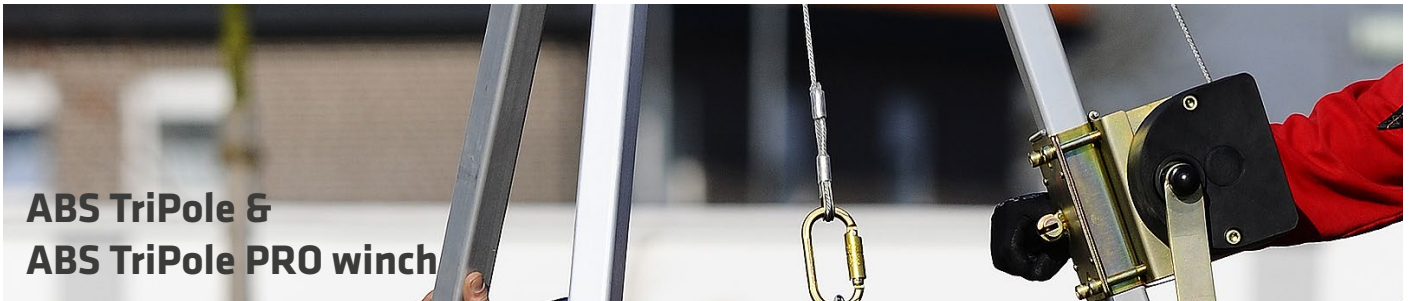
**PS-BL-S-30**

Product may differ from the image, depending on the length/connector

PRODUCT	DESCRIPTION	ORDER NO.
---------	-------------	-----------

## Personal protective equipment

## Group B



### ABS TriPole & ABS TriPole PRO winch



#### ABS TriPole

Mobile tripod for one individual acc. to EN 795 class B, used to secure workers during manhole work or in confined spaces.

- Adjustable height: 1.40m to 2.30m
- Distance between the shafts: 1.50m, for circular openings Ø 0.8 – 1.40m
- Material: Aluminum (legs), aluminum cast alloy (top section), weight 13kg
- Supplied with a practical carry bag

#### BR-TP-PRO



#### ABS TriPole PRO winch

Rescue winch acc. to EN 1496 class A, for attachment to an ABS TriPole tripod. Designed for raising or lowering an injured person.

- Galvanized steel cable Ø4.8mm, length 20m, weight 9.4kg
- Maximum load-bearing capacity 135kg
- Incl. installation materials for attaching the device to an ABS TriPole
- Ideal in combination with an ABS self-retracting lifeline (page 32)

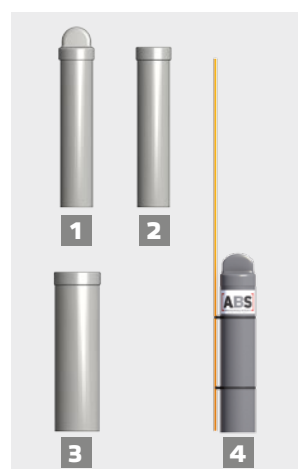
#### BR-TP-PRO-WINDE





PRODUCT	DESCRIPTION	ORDER NO.
---------	-------------	-----------

Accessories	Thermal protective caps	Group B
-------------	-------------------------	---------

**ABS THERM**

Thermal protective cap, length 320mm, made of UV-resistant and weather-proof synthetic material. Designed to cover up an open anchor section protruding above the roof membrane. Cap is not sealed in!

Can be cut to size onsite.

- **ZU-1009** = [1] For ABS-Lock® III and X
- **ZU-1009-F** = [2] For ABS-Lock® III and X and lifeline systems
- **ZU-1009A-F** = [3] For ABS-Lock® X-SR and lifeline systems

**ZU-1009**  
**ZU-1009-F**  
**ZU-1009A-F**

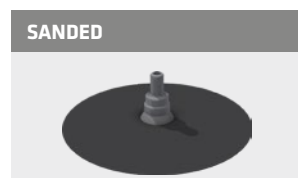
**Optional accessory: ABS SIGNAL**

[4] Signaling rod to mark the position of an ABS-Lock® anchorage point.

- Attached to an ABS-THERM cap using two plastic ties
- Ideal in winter: Anchorage points are visible even when covered in snow
- 80cm long, Ø6mm, material: fiber glass composite, signal color

**ZU-SIGNAL-80**

Accessories	Sealant collars	Group B
-------------	-----------------	---------



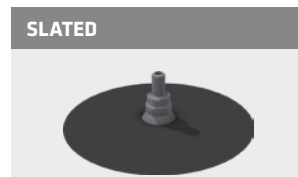
**SANDED**

**ABS BITU (non-UV-resistant)**

Bitumen sealant collar - **sanded** - for bitumen roofs.

- For bitumen roof membranes
- For Ø16mm and Ø42mm posts
- Incl. 100mm shrink tubing

**ZU-BITU-16**  
**ZU-BITU-42**



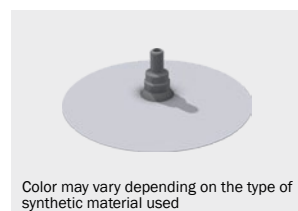
**SLATED**

**ABS BITU-S (UV-resistant)**

Bitumen sealant collar - **slated** - for bitumen roofs.

- For bitumen roof membranes
- For Ø16mm and Ø42mm posts
- Incl. 100mm shrink tubing

**ZU-BITU-S-16**  
**ZU-BITU-S-42**



Color may vary depending on the type of synthetic material used

**ABS collars for plastic roofs**

Sealant collars for PVC, PP and PE roofs.

- **PVC** = for Sikaplan, Bauder, FDT, Wolfin, Alwitra, Flag, Alkorplan F
- **PP** = for Bauder, FDT, Vedag, Wolfin, Flag, Sucoflex
- **PE** = for Polyfin, Nebiprofa, Schedetal
- For Ø16mm and Ø42mm posts, incl. 100mm shrink tubing

**ZU-PVC-16**  
**ZU-PVC-42**  
**ZU-PP-16**  
**ZU-PP-42**  
**ZU-PE-16**  
**ZU-PE-42**

**ABS EPDM (not suitable for EPDM membranes)**

EPDM sealant collar specially designed for cold-bonding.

- For bitumen roof membranes
- For Ø16mm and Ø42mm posts
- Incl. tube clamp

**ZU-1006**

Accessories	Collar extensions	Group B
-------------	-------------------	---------

**ABS collar extension (for Ø16 post)**

Sealant shrink tubing for an ABS collar, extends the seal above the aquifer layer, e.g. for inverted roofs

- Standard lengths: 300, 600 and 1200mm, simply cut to size onsite

**ZU-V-16-300**  
**ZU-V-16-600**  
**ZU-V-16-1200**

**ABS collar extension (for Ø42 post)**

Sealant shrink tubing for an ABS collar, extends the seal above the aquifer layer, e.g. for inverted roofs

- Standard lengths: 300, 600 and 1200mm, simply cut to size onsite

**ZU-V-42-300**  
**ZU-V-42-600**  
**ZU-V-42-1200**

PRODUCT	DESCRIPTION	ORDER NO.
<b>Accessories</b>	<b>Installation accessories</b>	<b>Group B</b>
	<b>ABS special adhesive</b> 2-component adhesive for installing devices with an anchor rod and integrated dowels in concrete and masonry. Incl. 2 mixing nozzles. <ul style="list-style-type: none"> <li>■ <b>ZU-1000</b> (300ml) = e.g. for ABS cartridge applicator gun ZU-1003</li> <li>■ <b>ZU-1017</b> (145ml) = for commercially available applicator guns</li> </ul>	<b>ZU-1000</b> <b>ZU-1017</b>
	<b>Cartridge applicator gun for ABS adhesive</b> Robust, durable cartridge applicator gun for 300ml ZU-1000 cartridges. Cartridge is easy to insert and simple to use.	<b>ZU-1003</b>
	<b>Bore hole cleaning brush</b> Cleaning brush with wire bristles for cleaning out bore holes. <ul style="list-style-type: none"> <li>■ <b>ZU-1001</b> = For bore holes ≤ Ø18mm (e.g. ABS-Lock® III)</li> <li>■ <b>ZU-1001A</b> = For bore holes ≤ Ø24mm (e.g. ABS-Lock® II)</li> </ul>	<b>ZU-1001</b> <b>ZU-1001A</b>
	<b>Bore hole air pump</b> Manually operated air pump for cleaning out bore holes, with hose nozzle. High capacity, air chamber length: 42cm.	<b>ZU-1002</b>
	<b>ABS perforated sleeve</b> Metal perforated sleeve for use with special adhesive, available in two sizes. For hollow-core slab floors/masonry applications with numerous air pockets. <ul style="list-style-type: none"> <li>■ <b>ZU-1025</b> = For M16 thread</li> <li>■ <b>ZU-1025A</b> = For M22 thread</li> </ul>	<b>ZU-1025</b> <b>ZU-1025A</b>
<b>Accessories</b>	<b>Telescopic rods</b>	<b>Group B</b>
	<b>ABS UP-System</b> Telescopic rod system with specially designed carabiner, designed to hook up protective equipment from a standing position/secure zone, incl. carabiner. <ul style="list-style-type: none"> <li>■ <b>1025-1</b> = 58-98cm</li> <li>■ <b>1025-3</b> = 160-290cm</li> <li>■ <b>1025-4</b> = 210-390cm</li> </ul>	<b>PS-1025-1</b> <b>PS-1025-3</b> <b>PS-1025-4</b>
	<b>ABS telescopic rod</b> Extra-long telescopic rod with hook, ideal for pulling down the connector in a self-retracting lifeline system installed in the ceiling from a standing position. <ul style="list-style-type: none"> <li>■ Standard lengths: <b>4m, 6m</b>. Other lengths available upon request</li> </ul>	<b>PS-TELE-4</b> <b>PS-TELE-6</b> <b>PS-TELE-XXX</b>
<b>Accessories</b>	<b>Lightning conductor</b>	<b>Group B</b>
	<b>Lightning conductor clamp Ø6 and Ø8 mm</b> Connector cable with clamps for connecting a lifeline (6mm or 8mm cable) to an existing lightning conductor system. <ul style="list-style-type: none"> <li>■ Use an ABS universal glider to simply glide over the lifeline clamp</li> </ul>	<b>SY-BLITZ-6</b> <b>SY-BLITZ-8</b>

PRODUCT	DESCRIPTION	ORDER NO.
---------	-------------	-----------

## ABS Custom Solutions

## Group B



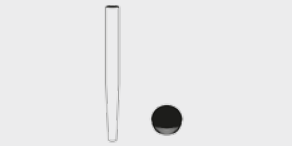



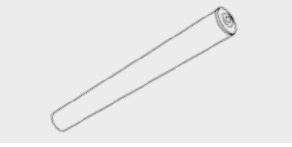

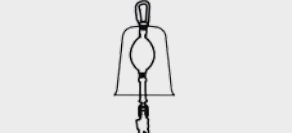
**ABS AirAnchor**

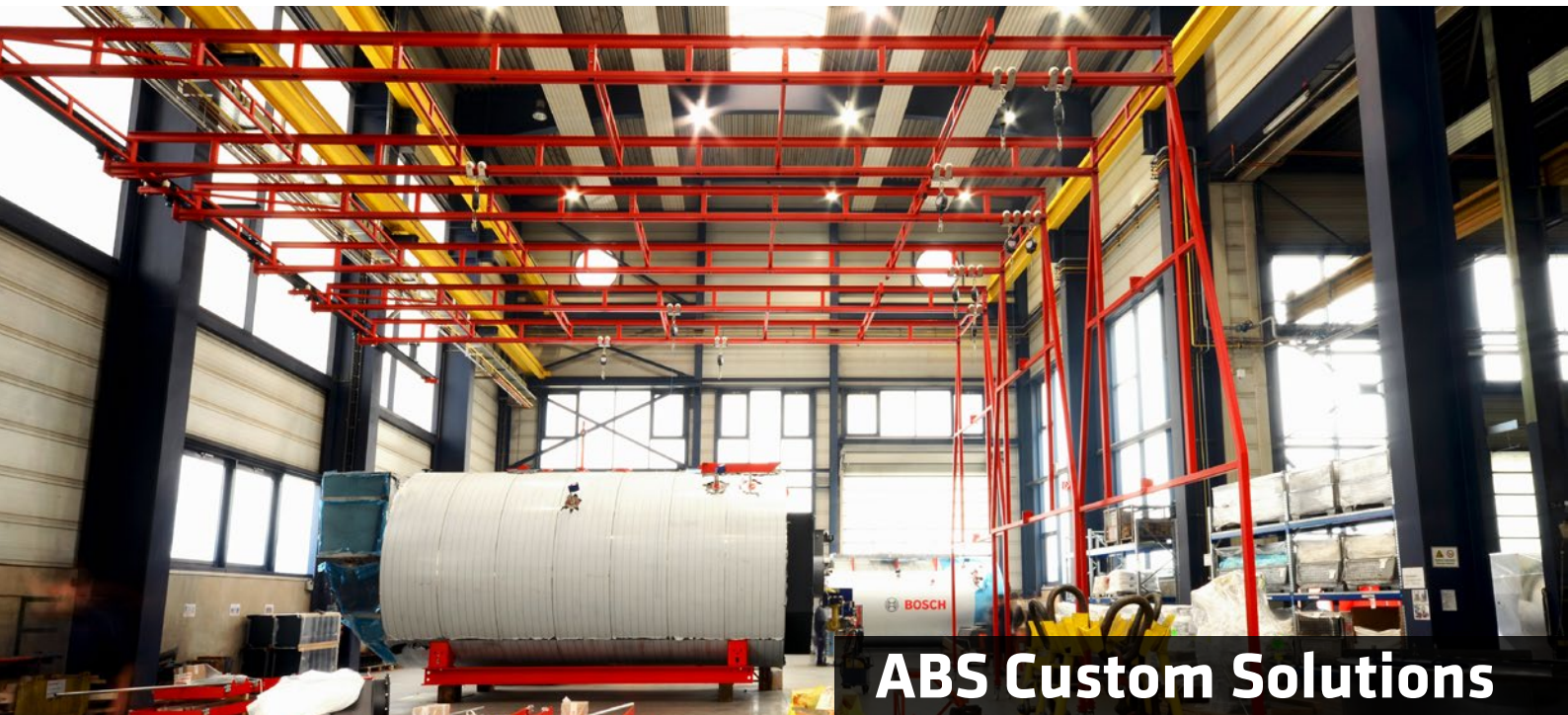
Davit arm retrieval system for 1 individual, arrester device w. integrated shock absorber provides optimal protection; wide range of installation options.

- Mount a tripod on the ground
- Weigh the device down using concrete weights or the weight of a vehicle
- Use our special clamp to attach the device to a steel girder
- Install in a concrete support using a specially-designed sleeve

**AA-AIRANCHOR**



PRODUCT	DESCRIPTION	ORDER NO.
<b>ABS AirAnchor</b>	<b>Substructure</b>	<b>Group B</b>
	<b>AirAnchor - tripod</b> <ul style="list-style-type: none"> <li>■ Designed to be screwed into the floor</li> <li>■ Easy to assemble</li> <li>■ Made of steel</li> </ul>	<b>AA-UK-TRIPOD</b>  
	<b>AirAnchor - sleeve for concrete applications</b> AirAnchor sleeve for permanent installation	<b>AA-HUELSE</b>
	<b>AirAnchor - for attachment to a steel structure</b> includes: <ul style="list-style-type: none"> <li>■ 2 x beam clamps for steel girders</li> <li>■ 1 x beam clamp sleeve</li> </ul>	<b>AA-UK-STAHL</b>
	<b>AirAnchor - truck counterweight kit</b> Underlying construction designed to counterweight an ABS AirAnchor using the weight of a truck or vehicle <b>Note:</b> We are currently developing a mobile counterweight system	<b>AA-LKW</b>
<b>ABS AirAnchor</b>	<b>Accessories</b>	<b>Group B</b>
	<b>AirAnchor - hook</b> Makes it easy to rotate an ABS AirAnchor; ideal for switching between several ABS AirAnchor devices	<b>AA-HUELSE</b>
	<b>AirAnchor - alignment aid</b> Note: When ordering an "AA-HUELSE" cementing sleeve, you will also require this special alignment aid	<b>AA-AUSRICHTHILFE</b>
	<b>AirAnchor - sling</b> Tape sling designed for bringing the ABS AirAnchor into position	<b>AA-SCHLINGE</b>
	<b>AirAnchor - ABS B-Lock with weather-proof cover</b> includes: <ul style="list-style-type: none"> <li>■ 1x B-Lock with 3.5 m belt</li> <li>■ 1x carabiner</li> <li>■ 1x Weather-proof cover</li> </ul>	<b>AA-BL-HAUBE</b>



## ABS Custom Solutions



### ABS Custom Solutions - Example 1

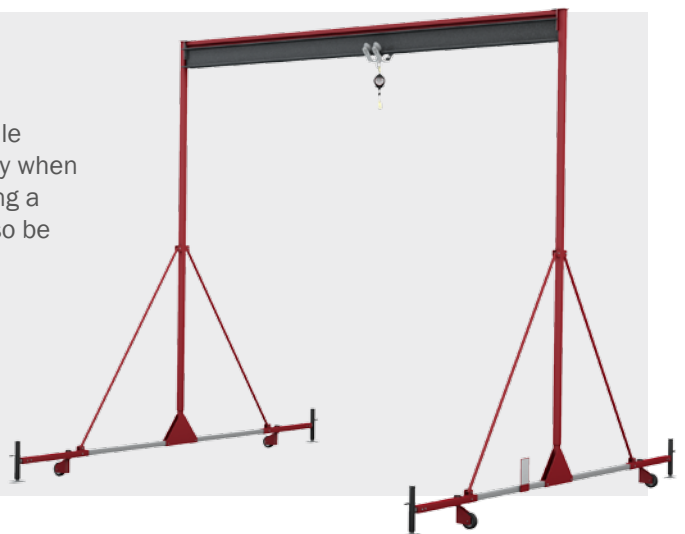
Universal fall protection system specially designed for working at heights. This system is extremely flexible and can be repositioned as required. Attention should be paid to ensuring that the planned location provides adequate space for the lower stabilizer bars.

- The device is produced to size and individually designed for special applications
- We can paint the device according to your wishes
- The system is equipped with heavy duty feet

### ABS Custom Solutions - Example 3

This system offers a secure anchorage point attached to a mobile frame. It is designed to increase your maneuverability and safety when working at heights. There are various models available - providing a safe anchorage point for up to 2 individuals. The system can also be easily relocated as you move along.

- The device is produced to size and individually designed for special applications
- We can paint the device according to your wishes
- The system is equipped with heavy duty feet



## Unique solutions for unique situations

ABS Custom Solutions are tailored to the individual requirements of your specific application - offering you the ultimate in safety.

- Paint finish: Standard red (RAL 3002)
- Other colors available upon request
- Extremely lightweight - easy to move by just a handful of people
- Weather-proof design

Please note that the systems illustrated on these pages only represent a small selection of our wide range of successfully installed Custom Solutions currently available. ABS Custom Solutions are not simply “off-the-shelf” products but products specifically designed and manufactured according to your wishes. Here are just a few examples of some of the optional features we can supply:

### ABS Custom Solutions - Example 2

This system provides a secure overhead anchorage point for several individuals working at heights. The system is weighted down with concrete - or similar - weights which allows it to be positioned right where you are working.

- The device is produced to size and individually designed for special applications
- The system can be supplied with or without counterweights, as required
- We can paint the device according to your wishes



### ABS Custom Solutions - Example 4

This overhead rail system can be simply rolled to any workplace where it is impossible to permanently install any other device. These systems are designed for specific workplace or machine implementation and can either be installed permanently or as a mobile solution - allowing you to use our ABS Box Frame at different locations.

- The device is produced to size and individually designed for special applications
- We can paint the device according to your wishes
- The system is equipped with heavy duty feet



Not only do we plan and manufacture individually-designed systems, ABS Safety can also install your system, train your personnel and handle your annual inspections. This enhances your safety levels and simplifies system usage. Tell us about your specific problem and we will show you the benefits of partnering with ABS Safety to design your perfect individual fall protection solution.





## ABS Safety GmbH

Gewerbering 3  
D-47623 Kevelaer  
Germany

Tel.: +49 (0) 28 32 - 972 81 - 0  
Fax.: +49 (0) 28 32 - 972 81 - 29

[info@absturzsicherung.de](mailto:info@absturzsicherung.de)  
[www.absturzsicherung.de](http://www.absturzsicherung.de)

[info@fall-arrest.eu](mailto:info@fall-arrest.eu)  
[www.fall-arrest.eu](http://www.fall-arrest.eu)

## ABS Safety Inc.

2220 Northmont Parkway, Suite 250  
Duluth, GA 30096  
U.S.A.

Phone: 1-800-485-1285  
Fax.: 1-678-417-6273

[info@abs-fall-protection.com](mailto:info@abs-fall-protection.com)  
[www.abs-fall-protection.com](http://www.abs-fall-protection.com)



RS - status: 2015-4-30