



INSTALLATION/USERS MANUAL





IMPORTANT: The installation and set up instructions should be carried out by a qualified technician.

IMPORTANT: It is important to refer to the wheelchair owner's manual for additional safety information related to the safe operation of the wheelchair.

Complies with:

- ISO 16840-4 Wheelchair Seating - part 4: Seating Systems for use in motor vehicles.
- RESNA WC-4:2012 Section 20: Seating Systems for use in motor vehicles.

It is recommended that a headrest be used when the back rest is used for transport in a motor vehicle.



1422791 Ontario Ltd
Dynamic Health Care Solutions
753011 2nd Line, Mono ON L9W 2Z2, Canada
+519-942-8441 | www.DynamicHCS.com



Advena Ltd. 33 Bridge St, Hereford HR4 9DQ, UK



TABLE OF CONTENTS

Mounting Hardware/Tools Required	4
Important Installation Information	4
Installation Instructions	6
Removing the Backrest	10
Removing the Backrest Cover for Washing	10
Installing Pelvic/Lumbar or Lateral Supports	11
Installing the Head/Neck Support Hardware	11
ARMADILLO MAPS Back	12
Warranty	14

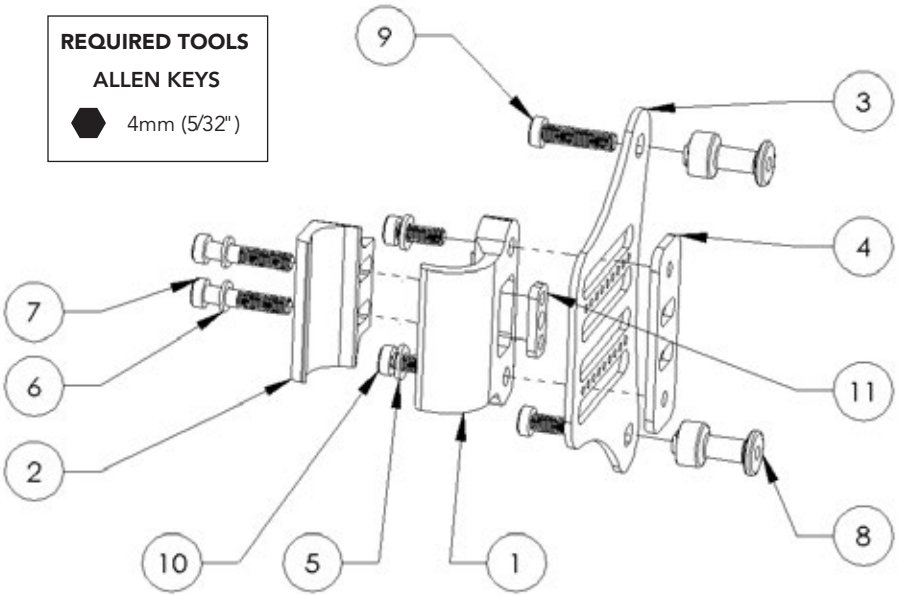
MOUNTING HARDWARE/TOOLS REQUIRED

REQUIRED TOOLS

ALLEN KEYS



4mm (5/32")



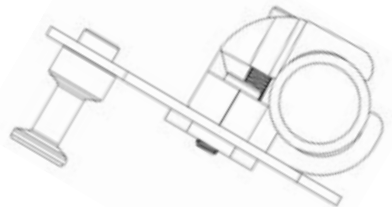
PARTS PER CLAMP

ITEM	PART #	DESCRIPTION	QTY
1	NIB-1002	G3 CLAMP - INNER	1
2	NIB-1003	G3 CLAMP - OUTER	1
3	NIB-0999	G3 MOUNTING BRACKET - QR	1
4	NIB-1001	G3 CLAMP PLATE	1
5	NIB-0791	M6 FLAT WASHER	2
6	NIB-0621	WASHER FOR ALUMINUM CLAMP	2
7	NIB-0813	M6X30mm HSCS-LOW PROFILE	2
8	NIB-1000	G3 MOUNTING PIN - LONG	2
9	NIB-0787	M6X25mm HSCS-LOW PROFILE	2
10	NIB-1069	M6X16mm HSCS-LOW PROFILE	2
11	NIB-1068	G3 CLAMP INNER NUT	1

IMPORTANT INFORMATION: READ BEFORE INSTALLATION

The Quickfit mounting hardware can accommodate different size back canes.

3/4"-19mm 7/8"-22mm and 1"-25mm back canes can be accommodated without inserts.



IMPORTANT INFORMATION: FOLLOW BEFORE INSTALLATION

WEIGHT CAPACITY: The weight capacity of the **nxt** Back is 300lbs – 136kg

Please note that the Quickfit mounting hardware on the **nxt** Back are pre-assembled with the cane clamp in the rear most mounting position to maximize seat depth of the wheelchair – see *Fig. 1* below.

The configuration can be changed by orienting the Quickfit cane clamp forward, providing a forward mounting position. See figure 2 below.

Note: The Quickfit mounting hardware provides 2.5"–6.4cm (3.5"–8.9cm on VC Back) of depth adjustment, in front of and behind the back canes.

To set the Quickfit mounting hardware in the forward most position:

- Remove the cane clamp from the mounting plate
- Rotate the cane clamp 180° and re-attach it to the mounting plate
- Install clamp as shown in *Fig. 2*

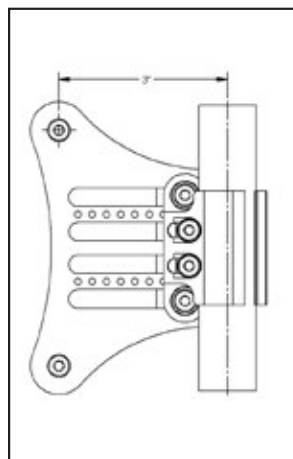


Fig. 1: Quickfit clamp in rearward most position.

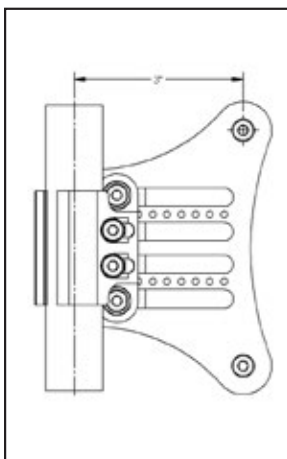


Fig. 2: Quickfit clamp in forward most position.

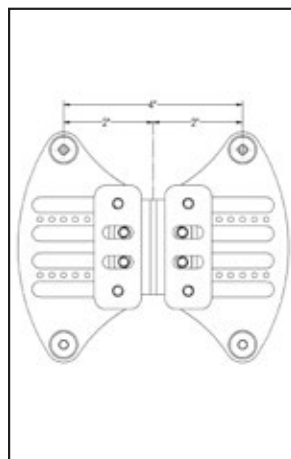


Fig. 3: Range of adjustment for pediatric and armadillo mounting hardware

Please Note: Setting the desired position of the **nxt** Back may compromise the stability of the wheelchair.

Be aware that the forward and aft position for the backrest will change the user's centre of gravity within the wheelchair. A back set in the most rearward position can significantly reduce the rearward stability of the wheelchair. In contrast, a more forward back position may reduce the wheelchair's forward stability.

nxt BACK INSTALLATION INSTRUCTIONS

WARNING: DO NOT substitute hardware provided.
Use only high strength hardware provided.

1. Remove wheelchair back upholstery if applicable.
2. Establish the desired mounting plate configuration for the user as described on page 5.
3. Loosen the 2 tube clamp screws and mount Quickfit bracket on the back canes.
4. Position the cane clamp at the height desired and tighten screws enough to hold it in place. Full tightening can be done when back is installed and final adjustments have been done.
5. Measure the height of the Quickfit clamp assembly from a fixed position on the wheelchair and install the second at the same desired height. Further, make sure the cane clamp mounting plates are mounted parallel with each other. See *Fig. 4* below.
6. All HA (Height Adjustable) Backs can be infinitely adjusted from 16"–40.6cm to 20"–50.8cm. Loosen the four cap screws with a 4mm Allen wrench on the rear of the backrest, set the backrest to the desired height and tighten the lock nuts into place. When the HA Back is in its lowest position, tuck the excess padding behind the seat cushion. See *Fig. 5* below.



Fig. 4: Cane clamps must be installed at the same height and parallel to each other

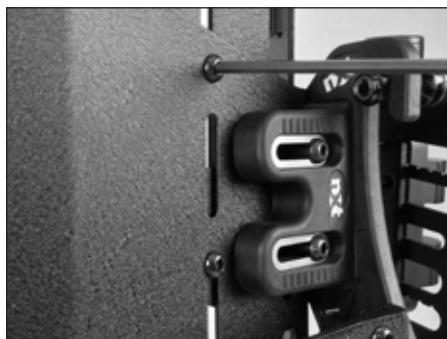
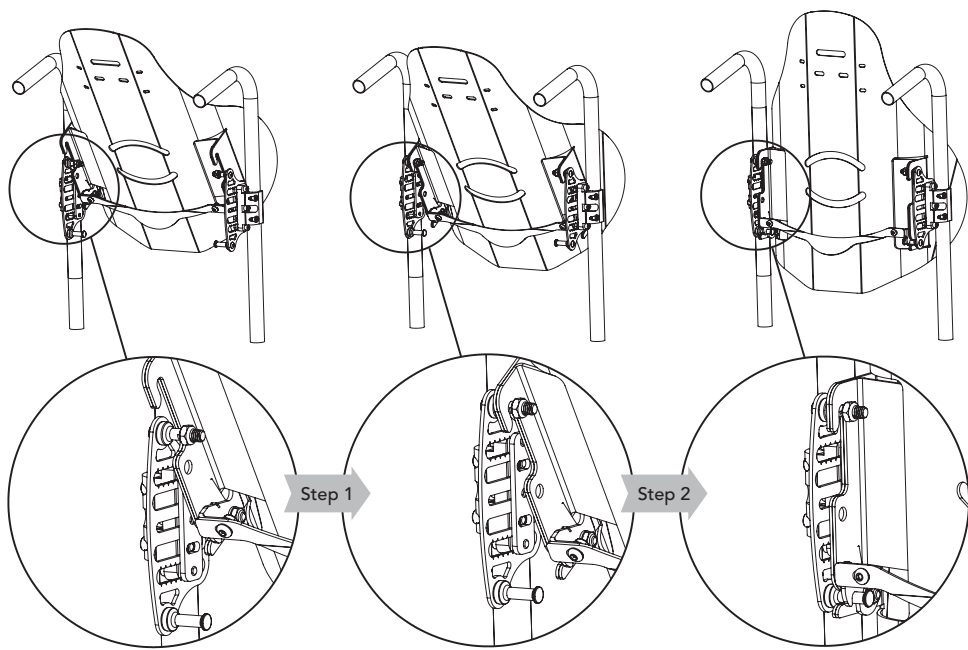


Fig. 5: Loosen 4 cap screws to adjust back height

nxt BACK INSTALLATION INSTRUCTIONS

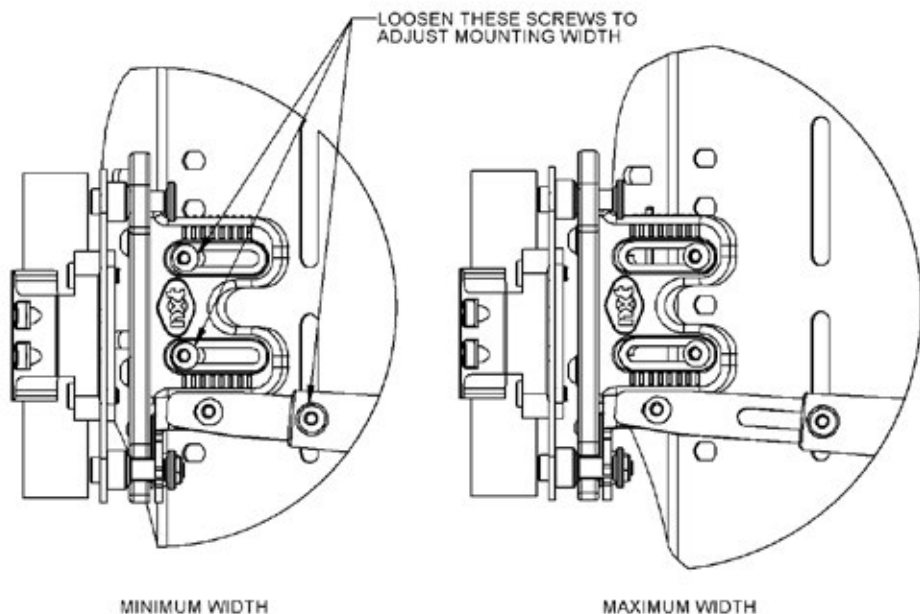


7. To install the backrest on the mounting plates:

Step 1: Insert the top of the backrest slot onto the top adjustment pins

Step 2: Rotate the lower section of the backrest rearward to lock it into the locking latch to secure the backrest in place.

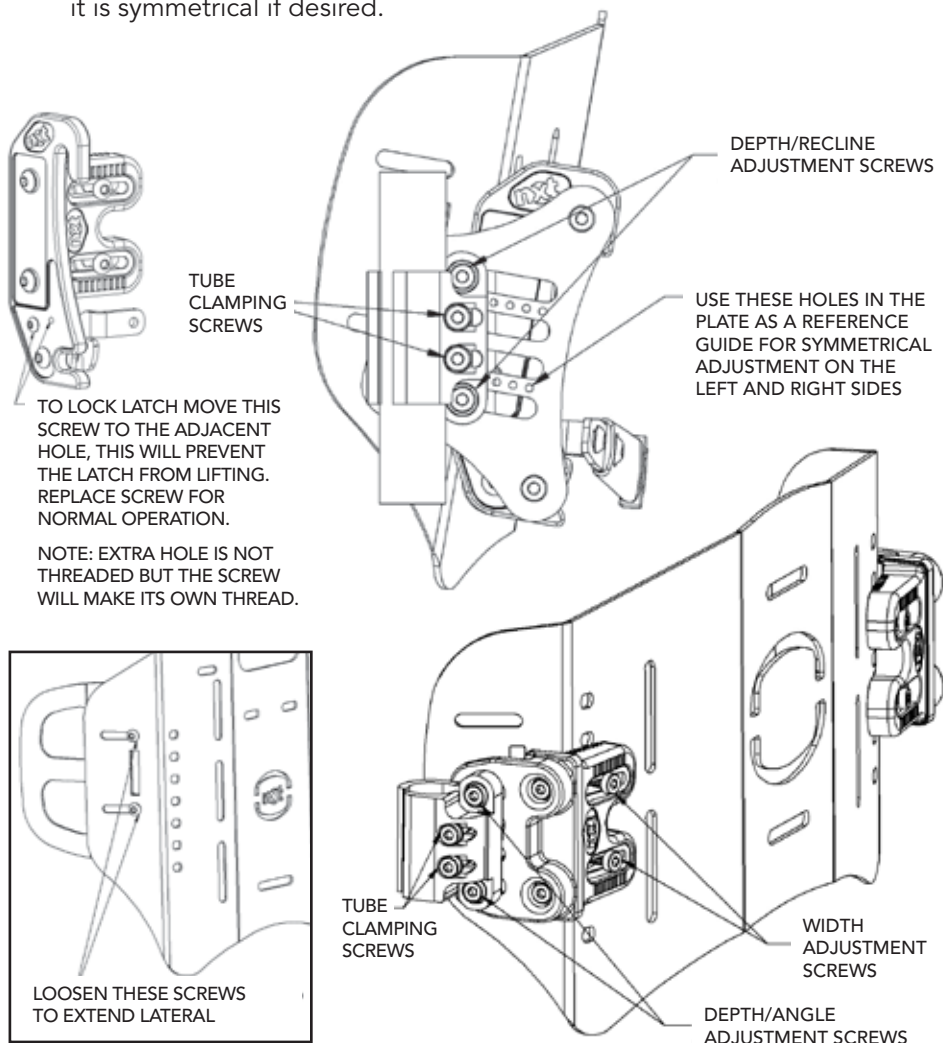
nxt BACK INSTALLATION INSTRUCTIONS



8. To ensure the backrest is properly fitted you may need to adjust the mounting hardware inward or outward.
 - Step 1: Loosen the screws to adjust the mounting width and the one-hand release.
 - Step 2: Make sure the backrest is centered horizontally and vertically between the back canes and the locking latch on the bottom is on the inside of the post
 - Step 3: When satisfied, tighten screws.
 - Step 4: The width adjustable mounting hardware allows the backrest to fit 3 sizes of wheelchair, ie a 16"/40cm wide back rest can fit a 16"/40cm, a 17"/43cm or 18"/45cm wheelchair.

nxt BACK INSTALLATION INSTRUCTIONS

9. Make sure that the overall fit and alignment of the back is correct, if not make adjustments as required.
10. Secure the cane clamp screws onto each back cane.
11. Setting the depth and recline settings it is best done with the client seated in the wheelchair. While the client is seated and supported in the wheelchair, loosen the depth screws on the mounting plate and set to the desired position. Tighten all screws to lock the backrest in position. The backrest can be mounted asymmetrically, so be sure that it is symmetrical if desired.



REMOVING THE BACKREST



To remove the backrest from the wheelchair

- Step 1: Lift on the one hand release lever to release the latches, push the bottom of the back forward.
- Step 2: Lift the backrest off the upper pins to remove completely.

REMOVING THE COVER FOR WASHING & CARE

1. Remove the upholstery from the backrest.
2. For light cleaning of the backrest fabric may be wiped down with a damp cloth.
3. Follow laundering instructions provided with the cover.



Undo velcro closure & remove foam pad before washing outer cover

PELVIC/LUMBAR SUPPORTS & OPTIONAL LATERAL SUPPORTS

- 1. The Pelvic-lumbar support pads can be uniquely positioned to provide optimal pelvic positioning and lumbar support. The supports come uninstalled, allowing them to be specifically fit to the person at the time of the back installation. Fit as shown between fabric and inner shell of backrest. Hook Velcro on the front of the pelvic pad attached to the Velcro compatible fabric of the cover.
- 2. Where additional lateral support is required, optional lateral supports are available and provide additional lateral/hip support where needed. Fit pads between the fabric and the shell of the backrest.
- 3. After positioning support pads, seal velcro closure, reposition cover on the backrest shell, attach the upholstery.



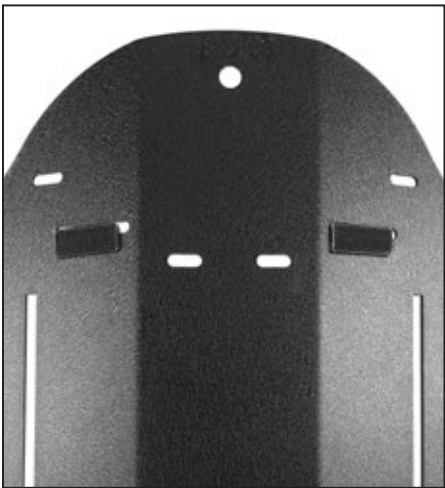
Pelvic-lumbar support pads



Lateral support pads

INSTALLING HEAD/NECK SUPPORTS

Attachment slots are stamped into the back shell for attaching after market head/neck supports.

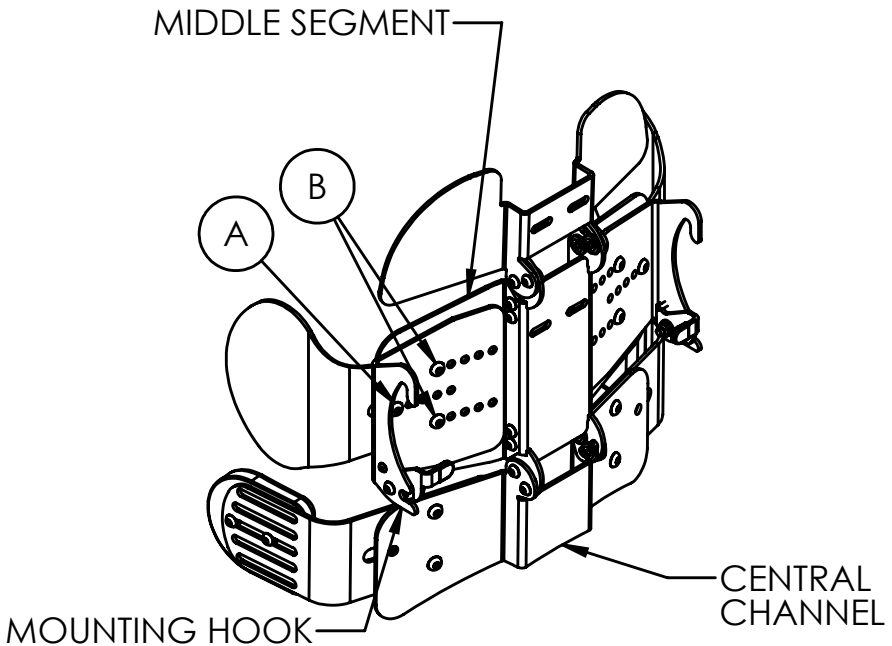


Pre stamped head/neck rest slots

ARMADILLO MAPS BACK

(MULTI ADJUSTABLE POSTURAL SUPPORT)

1. Setting Back Height and Angle - The ARMADILLO installs, like all nxt Backs, using Universal Clamps attached to the back canes. The back height and angle of the middle shell segment are adjusted using these clamps as shown on page 5 (*fig. 3*)
2. Adjusting Back to match Chair Width - The ARMADILLO is available in sizes to fit chair widths 14"/35cm-25"/63cm.
 - To adjust the mounting hook width remove screws A and B.
 - Move the mounting hooks to the correct holes and reinstall the 3 screws.
 - Screw A fits into a fixed threaded hole in the middle shell segment and screws B fit into sliding nuts which hold the upper laterals in place.
 - The hooks can be moved in ½"/1.3cm increments and are normally placed symmetrically on the back but may be asymmetrical if required.



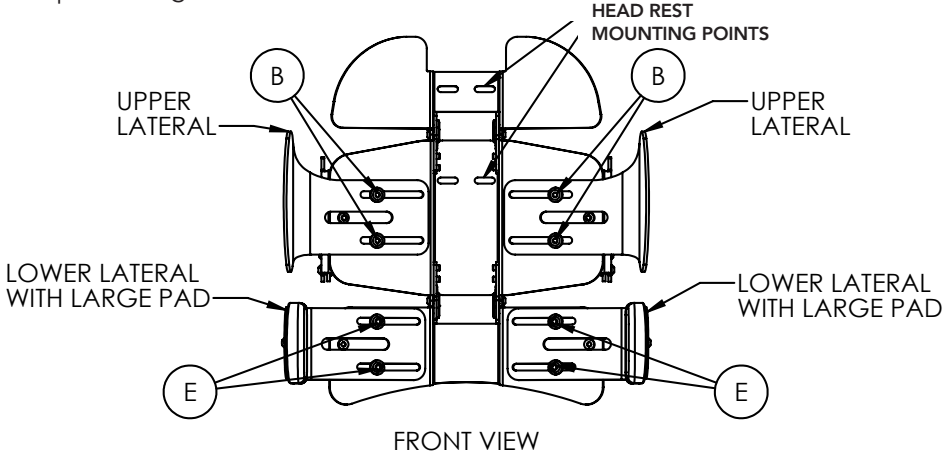
NOTE:

ONLY SCREWS ON THE LEFT SIDE OF THE BACK ARE LABELED. MATCHING SCREWS ON THE RIGHT SIDE MUST ALSO BE USED TO MAKE ADJUSTMENTS.

ARMADILLO MAPS BACK

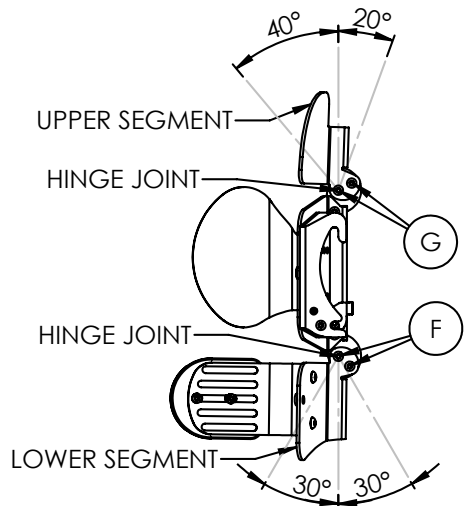
(MULTI ADJUSTABLE POSTURAL SUPPORT)

3. Head Rest Mounting - The Upper and Middle segments of the ARMADILLO shell have slots to accept mounting hardware for the next MultiFit Head Rest. Choose the location which provided the best positioning for the head rest.



4. Lateral Installation and Adjustment - Upper laterals are held in place by screws B and the Lower laterals by screws E. These screws thread into sliding nuts in slots on the laterals allowing the laterals to be infinitely adjustable between their most inner and outer positions only limited by the postural requirements of the occupant of the wheelchair and any structural components of the wheelchair. Loosening screws B or E allowing the laterals to slide will not affect the positioning of the mounting hooks.

5. Angle Adjustments - The Upper and Lower segments of the ARMADILLO shell are individually angle adjustable with respect to the Middle segment. Loosening screws G (on both sides of hinge joint) allows the Upper segment to be tilted forward up to 40 degrees or backward up to 20 degrees. Loosening screws F (on both sides of hinge joint) allows the Lower segment to be tilted forward or backward up to 30 degrees. Tightening the screws locks the segment preventing a change in angle.



WARRANTY POLICY

The **nxt** Seating Series Back Support has a Limited Warranty for 24 months from the date of delivery to the original purchaser. If any defect in material or workmanship is found, the manufacturer will repair or replace the component, at our discretion. This limited warranty does not cover daily wear and tear or damage that is a result of mishandling, misuse, neglect, or not following the care and maintenance instructions. Your Back Support cover is under warranty for 90 days. The warranty includes damage due to workmanship, material defects or errors caused by the manufacturer. This warranty does not apply to cigarette burns, damage to the cover by sharp objects that may cause tears, or damage as a result of not following the washing instructions. Claims and repairs should be processed through your nearest authorized Dealer. A copy of the invoice issued to the purchaser of the product may be required prior to processing a warranty claim.



By  **dynamic**
HEALTH CARE SOLUTIONS

Dynamic Health Care Solutions
T (866) 875-2877 • F (866) 875-2878
www.DynamicHCS.com