

DMM

digital music mentor



User's manual

Serial Number:

Contents

System requirements.....	4
Installation from CD	4
Installation from download	4
Using DMM	5
Starting DMM.....	5
Activate your DMM.....	5
Load a song.....	6
Analyze a song.....	6
Switching between views.....	7
Play/stop song	7
Increase/decrease volume	8
Type lyrics	8
Transpose a song.....	9
Change bar starting position	10
Change distance between bars.....	10
Chord View	11
Move chord.....	11
Insert new chord.....	11
Delete chord	12
Bass View	13
Delete bass tab.....	13
Insert new bass tab	14
Move tab	15
Edit View	15
Refresh from Chord View	16
Refresh from Bass View.....	16
Export analyzed result to MS Word.....	16
Web View	17
Chord Dialog.....	18
Change displayed chord.....	18
Tools Dialog.....	19
Display Strong Tones	19
Song Information	19
Change speed and keeping the pitch	20

Mode Selection	20
Settings Dialog.....	21
Change Active Soundcard	21
Check boxes	21
Change view appearance.....	22
Features.....	22
Display help file	22
Change Language	22
Hide/Show dialogs	22
Print/Print preview	23
Save/Open DMM files	23
Change lyrics font size.....	23
Zoom in/Zoom out	24
Check for Updates.....	24
Make your own skin	24
Add New Chords to Chord Dialog	24
Add Language (Localization)	25
Troubleshooting	25
I cannot load music from a CD.....	25
DMM doesn't show the correct chords	25
It's silent when pressing Play	26
I'm connected to the Internet but the Web View states that I'm offline.....	26
Why do DMM connect to the Internet.....	26
Unable to activate	26

System requirements

PC or 100% compatible
Pentium II processor 600 MHz or higher
Windows 98SE/ME/NT/2000/XP/Vista
Minimum 128 Mb RAM
Soundcard/CD-ROM/Monitor/Internet

Installation from CD

1. Insert the CD in your CD-ROM
2. The setup program gets launched.
3. Choose language to use during the installation and press *OK*.
4. Read the license agreement and press *I Agree* if you agree on the license agreement otherwise press *Cancel* and the installation ends.
5. Choose the components you want to install and press *Next* >.
6. Select the destination folder and press *Install*.
7. DMM is installed.
8. Restart your computer before you use DMM.

Installation from download

1. Double-click on the downloaded setup file.
2. The setup program gets launched.
3. Choose language to use during the installation and press *OK*.
4. Read the license agreement and press *I Agree* if you agree on the license agreement otherwise press *Cancel* and the installation ends.
5. Choose the components you want to install and press *Next* >.
6. Select the destination folder and press *Install*.
7. DMM is installed.
8. Restart your computer before you use DMM.

Using DMM

Starting DMM

On the Windows taskbar, click Start -> Programs -> Digital Music Mentor -> DMM.

Activate your DMM

Until your DMM is activated using your serial number, DMM will be in demo mode.

You can activate your DMM in two ways.

Activate automatically through the Internet

1. When you launch DMM you'll see the Web View.
2. Enter your serial number in the *Serial No* text field and press *Activate*.
3. DMM contacts the Sienzo website and all features are enabled.

Activate manually via Email

Please follow the instruction at our web site at <http://licensefile.sienzo.com/>.

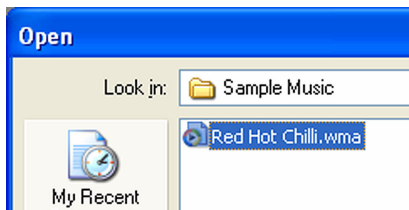
Load a song

DMM supports the following file types;
MP3, CDA, WAV, WMA, RAW, AVI, VOX, Ogg Vorbis, MPC, AIFF.

1. Click on Load on the Control Dialog.



2. Browse for a file containing the song to load and press Open.



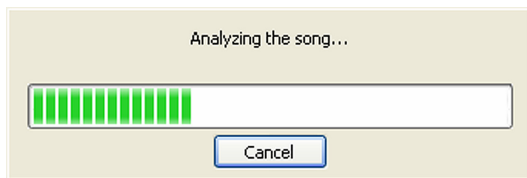
Analyze a song

A song must be loaded prior to analyzing the song.

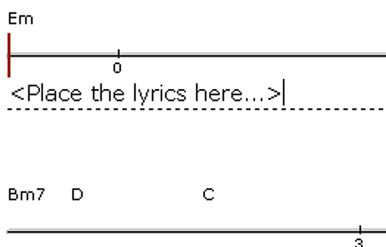
1. Click on Analyze on the Control Dialog.



2. The progress bar is shown.



3. The song is analyzed and the chords/tabs are displayed.



Switching between views

The views to switch between can be found in the toolbar. To switch to a view just click the toolbar button for that view.



Play/stop song

A song must be loaded prior to playing the song.

Click on the play button on the Control Dialog.



To stop a song, click the stop button.



A song can also be stopped and played by pressing the spacebar on the keyboard.

To fast forward or fast rewind a song click the forward or the rewind buttons.



A quick way to rewind and forward is to press the <- and -> buttons on the keyboard.

Increase/decrease volume

A song must be loaded prior to be able to change the volume.

To change the volume of the played music:

1. Click the volume knob on the control dialog and keep mouse button down.

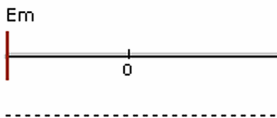


2. Drag the volume knob to desired volume.

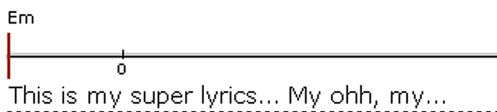
Type lyrics

It's possible to type lyrics or other text on all dashed lines, in both bass and chord view.

1. Use the mouse and left click just above the dashed line where you want to type the lyrics.



2. Type the lyrics.



3. Press Enter or click outside the dashed line to stop typing.

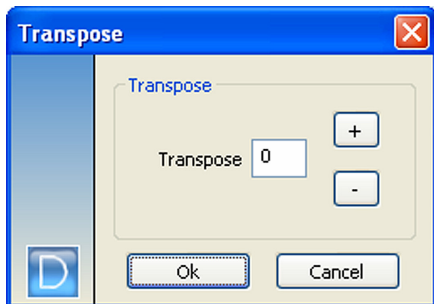
Transpose a song

A song must be loaded and analyzed prior to transposing a song.

1. Click the transpose button.

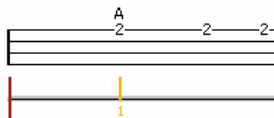


2. Choose to increase or decrease the key. Then click ok.

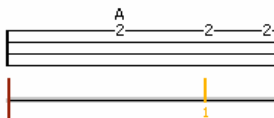


Change bar starting position

1. Click on the first bar (number 1) and the bar turns yellow.

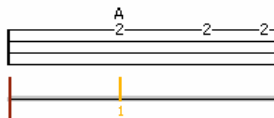


2. Drag the bar to preferred position and release the mouse button.



Change distance between bars

1. Click on a bar and the bar turns yellow.



2. Drag the bar to preferred position and release the mouse button.



Chord View

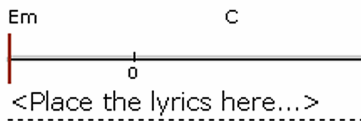
The chord view shows the chords of the analyzed songs.



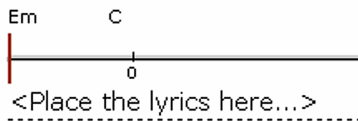
Move chord

It's not possible to move a chord between different lines. If you want to do that, you'll have to first delete the chord and then insert the chord on the desired line.

1. Load and analyze a song.



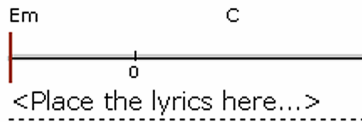
2. Use the mouse and left click on the chord like to move and drag the chord desired location while hold the mouse button down.



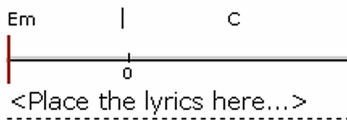
3. Release the mouse button on the position where you want to move the chord to.

Insert new chord

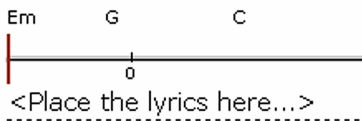
1. Load and analyze a song.



2. Use the mouse and left click where you want to insert a new chord.



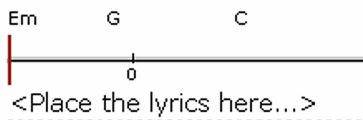
3. Use the keyboard to type in the chord.



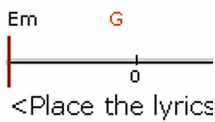
4. Press Enter or click outside the chord line to save the chord.

Delete chord

1. Load and analyze a song.



2. Use the mouse and left click on the chord you want to delete so it turns red.



3. Press on Delete on the keyboard.

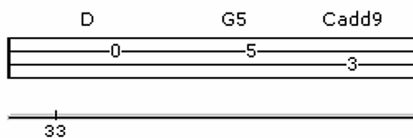
Bass View

The bass view shows bass tabs and the chords of the analyzed songs.

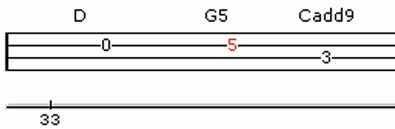


Delete bass tab

1. Load and analyze a song.



2. Use the mouse and left click on the chord you want to delete so it turns red.



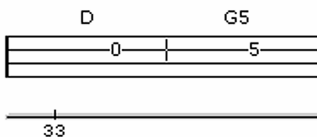
3. Press on Delete on the keyboard.

Insert new bass tab

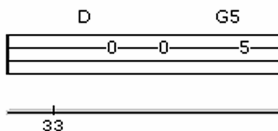
1. Load and analyze a song.



2. Use the mouse and left click where you want to insert a new tab.



3. Use the keyboard to type in the chord.



4. Press Enter or click outside the tab lines to save the tab.

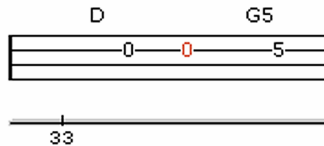
Move tab

It's not possible to move a tab between different lines. If you want to do that, you'll have to first delete the tab and then insert the tab on the desired line.

1. Load and analyze a song.



2. Use the mouse and left click on the tab to move and drag the tab desired location while hold the mouse button down.



3. Release the mouse button on the position where you want to move the tab to.

Edit View

In the edit view the chords and lyrics can be displayed in a printer and troubadour friendly format. Here the chords and lyrics can be edited as in an ordinary text editor.



Refresh from Chord View

The chords and lyrics in the chord view are copied to the edit view the first time the edit view is shown.

The contents in the edit view can easily be updated with the latest chords/lyrics from the chord view, i.e. refreshed.

1. Right click somewhere in the edit view, a menu appears.
2. Choose Refresh from Chord view.

Refresh from Bass View

The bass tabs can also be copied to the edit view.

1. Right click somewhere in the edit view, a menu appears.
2. Choose Refresh from Bass view.

Export analyzed result to MS Word

A song must be loaded and analyzed prior to exporting to MS Word compatible format, Rich Text Format (RTF). Only the Edit View can be exported to RTF.

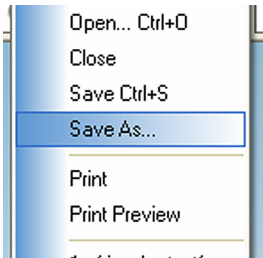
1. Switch to Edit View.

nothing

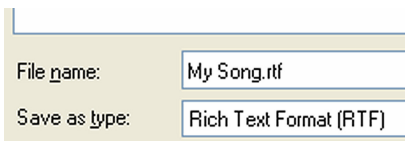
Em G C
<Place the lyrics here...>

Bm7 D C Em D

2. Choose menu option File -> Save As...



3. Save the file as RTF.



4. The exported file can now be opened in MS Word.

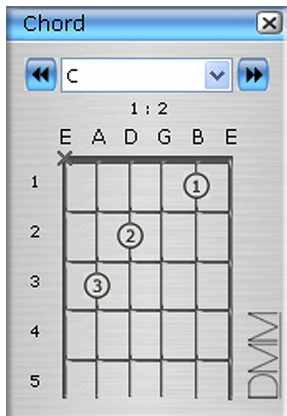
Web View

The web view is a web browser. Information from Sienzo is shown here.



Chord Dialog

The chord dialog displays how to play the chords on guitar.



Change displayed chord

By clicking on the drop down list the displayed chord can be changed.

Some chords do have more then one way to be played. The number of different fingerings is displayed below the drop down list.

The different fingerings can be displayed by using the arrow buttons.

Tools Dialog



Display Strong Tones

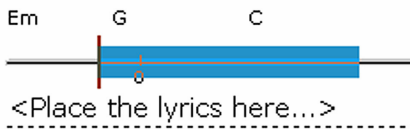
The top of the dialog displays the strong tones played in a song. A song must have been analyzed to display the strong tones. To show the strong tones for a certain time position of the song, move the mouse cursor to that time position in the document. The strong tones will automatically be displayed in the tools dialog.

Song Information

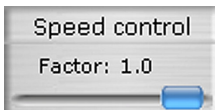
The pitch of the song (in Hertz), the key the song is played in and the BPM (beats per minute) are shown.

Change speed and keeping the pitch

1. Switch to Chord View or Bass View.
2. Mark a selection thru left clicking with the mouse on the time line and pulling the mouse cursor to a desired location holding the mouse button down. Release the mouse button to finalize the selection.



3. The speed control gets enabled. Drag the slide to desired speed by clicking on the speed control button with the mouse, hold down mouse button and drag to desired speed. Release mouse button.

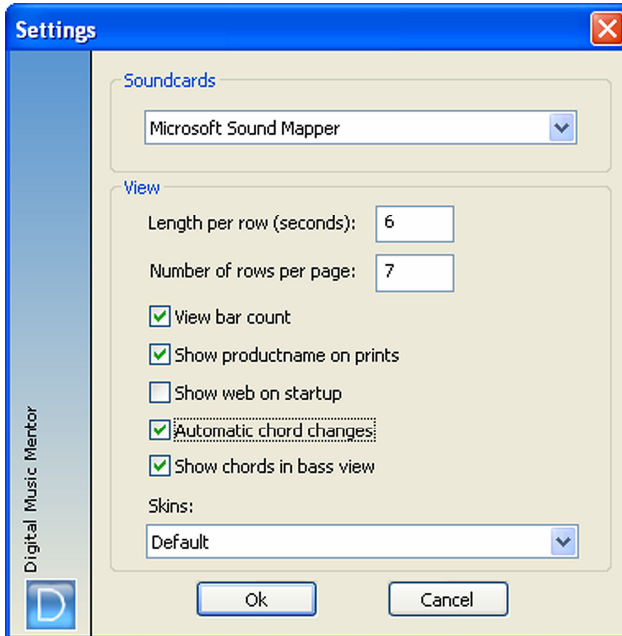


Mode Selection

The mode selection is used to display as much information as desired. There are three different levels.

1. Basic: no color of the chords is displayed. For beginners.
2. Normal: the chords are the displayed as the probably are played.
3. Details: can be used to display extra information, e.g. to show riff- or color information.

Settings Dialog



Change Active Soundcard

1. Click on the drop down list and choose the soundcard to use.
2. Click ok.

Check boxes

View bar count: Check if the bar count should be visible.

Show web on startup: Check if the web view should be active on startup.

Automatic chord changes: Check if the chords should change during playback of a song.

Show chords in bass view: Check if the chords should be visible in the bass view.

Change view appearance

Length per row is the number of seconds that is displayed on every row in the bass and chord view. Default is 6 seconds.

Number of rows per page is the number of rows to show on each page in the bass and chord view. Default is 7 rows.

When view bar count is checked the bar counts in the views are displayed. If not checked the bar counts is hidden.

Uncheck Show web on startup if the DMM should not start with the web view. If uncheck the program will start with the chord view.

To change skin just click on the drop down list and choose the wanted skin.

Features

Display help file

To be able to view the help file a .pdf reader must be installed (e.g. Acrobat Reader).

1. Click the menu/help then choose *Help Topics...*

Change Language

Displayed language in DMM can be changed.

1. Click the menu Language.
2. The languages to choose between are displayed.
3. Click on the language to use.

Hide/Show dialogs

The toolbar, status bar, Control Dialog, Tools Dialog and Chord Dialog can be shown or hidden.

1. Click the menu View.
2. Click on the dialog to show or hide.

Print/Print preview

To print:

1. Choose the view to print by switching to that view.
2. Click on the menu File/Print or the print button in the toolbar.



3. A print dialog appears. Choose printer
4. Click ok.

Print preview:

1. Choose the view to preview by switching to that view.
2. Click the menu File/Print Preview.

Save/Open DMM files

DMM documents are saved as .mtf files.

To save a file:

1. Click the menu File/Save or Save As...
2. Choose name and where to save the file
3. Click save.

To open a saved file:

1. Click the menu File/Open
2. Browse for the file to open.

A file can also be opened by double-clicking the file.

Change lyrics font size

If a song is loaded the font size of the lyrics can be changed. Just right click somewhere on the document and choose 'Change lyrics font size'.

Zoom in/Zoom out

The document can be viewed with different magnifications. To change magnification click the toolbar buttons zoom in or zoom out.



Check for Updates

Please note! DMM must be connected to the Internet in order to check for updates.

To check if the installed version is the latest version click the menu Help/Check for Updates. The web view will be displayed showing you if there are any updates available.

Make your own skin

To change the appearance of the program the skin can be changed (this is done in the Settings dialog). Default there is only one skin. More skins can however be added to make the program look as desired.

1. Browse to the folder where DMM is installed. In that folder there is a folder called skins. Double-click that folder.
2. Create a new folder and give it the skin name you like.
3. Then copy the contents in the folder default (a lot of images) and paste the contents into the newly created folder.
4. Change the images the way you want.
5. Start the DMM and choose your new skin (the program must be restarted for changes to make affect).
6. Done.

Add New Chords to Chord Dialog

New chords to the chords dialog can be added. The existing chords can also be changed.

1. Browse to the folder where DMM is installed.
2. In that folder there is a file called ChordFile.ini. Double click the file to open it.
3. In the file there is an explanation on how to edit and add chords.

Add Language (Localization)

Languages can easily be added and the translations can be changed.

1. Browse to the folder where DMM is installed.
2. In that folder there is a file called Languages.txt. This is the file where all the strings the program uses are stored.
3. Open the file. Every number represents a string. Every number exists once in every language.
4. Add a language or change a string. Then close the file.
5. The next time DMM is started the new strings will be read. If a new language is added, the new language will appear in the menu Languages.

Troubleshooting

I cannot load music from a CD

If you have more than one CD-ROM installed on your computer, make sure that you're browsing to the correct CD-ROM.

DMM doesn't show the correct chords

DMM's accuracy on the transcription is greatly depended on music genre and complexity. The focus on the transcription is currently on Pop & Rock and therefore can the result be quite confusing when analyzing more complex music such as Funk, Jazz, Classical, Hip Hop, Electro, etc.

Normally you can expect a accuracy of 80-95% correctness on Pop & Rock.

It's silent when pressing Play

Make sure that your speakers are turned on, your computers volume is not muted and you can play the same file through another software (such as Windows Media Player, Winamp, etc.). If you have more than one soundcard or are using a special connection, switch the active soundcard that the program uses in the settings dialog.

I'm connected to the Internet but the Web View states that I'm offline

If you have a firewall installed, please make sure that DMM is allowed to connect to the Internet.

Why do DMM connect to the Internet

DMM connects to the Internet due to mainly two reasons; firstly, to enable you to easily register your DMM and quickly enjoy all features of the software and secondly, to integrate dynamic information into the software and give you information about updates, future functions, communicate with other users, get tips and tricks, get online support, etc.

Please note that DMM doesn't collect ANY personal information about the user.

Unable to activate

Every computer is has an Unique Computer Id. This id is used to generate a license that is unique for every computer.

This means that every computer needs a unique license and a license may therefore not be used on several different computers.

If you're unable to activate DMM this is probably due to that we did not receive the Unique Computer Id from the computer you're trying to activate DMM on.

The solution for this problem is to; when activating, double and triple check that:

1. The Unique Computer Id is exactly as stated in the Unique Computer Id dialog.

2. That the Unique Computer Id is taken from the computer you're trying to activate DMM on.