

---

# Kinesense Milestone Getting Started

---

Install and User Guide

---

Patricia McCabe, Kinesense Ltd

---

## Introduction

This document contains an Installation Guide and Quick Start User Guide for Kinesense for Milestone.

Further details are available in the User manual.

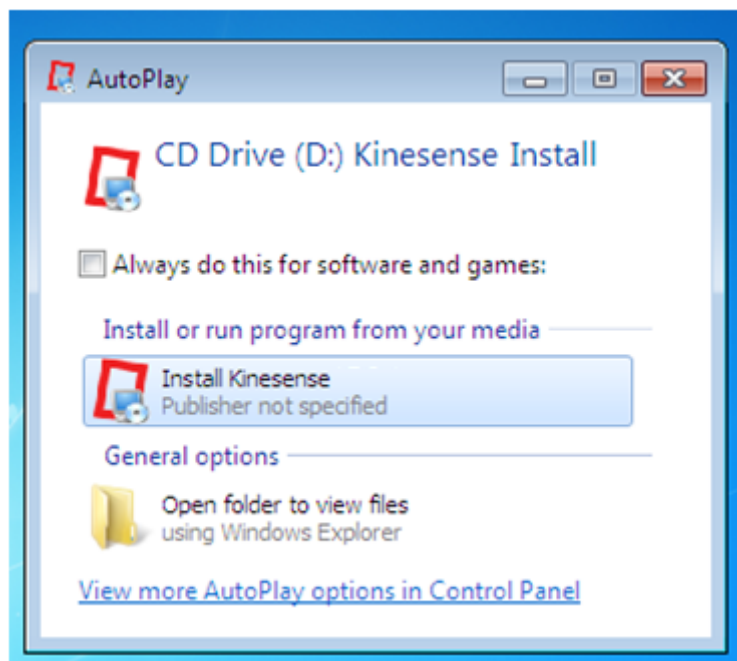
## System Requirements

This install DVD has been configured to work on English Language Windows 7. Requirements are:

- Windows 7 or above
- Intel Core i5 or above
- 4 GB Ram
- More than 5 GB free Hard Disk Space

## Install Kinesense for Milestone

First, please close all other applications that may be open. Insert the Installation DVD provided. If autorun is enabled on your computer, you will see this message:



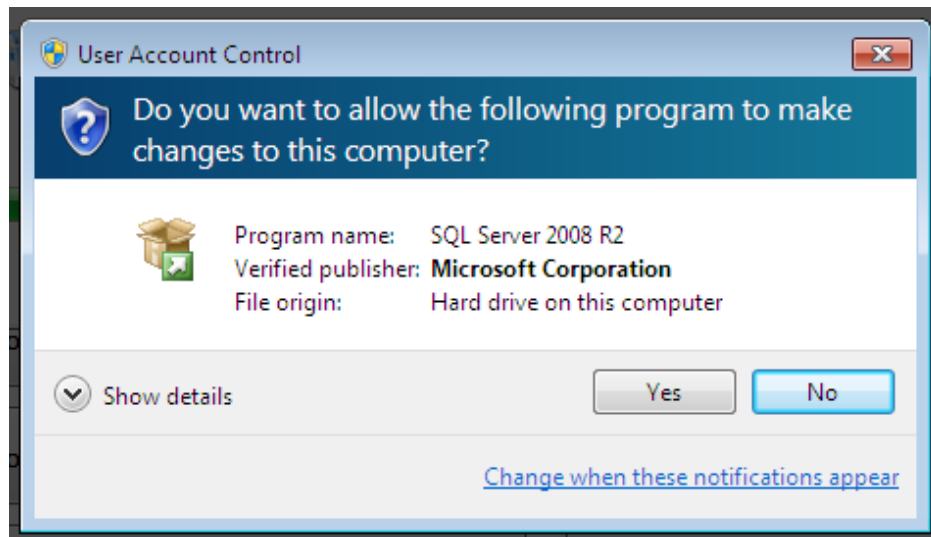
Press Enter and install Kinesense

(If you do not see this message, manually open the disk using Explorer. Run DemoDBCopier.exe)

You will now see this message:

This will begin installing the necessary prerequisites for Kinesense for Milestone, including Microsoft .Net 4.0, Microsoft SQL 2008 R2 Express and SQL CLR types.

You will be asked to accept these installs.



Please click 'Yes' or 'Accept' or 'Install' to all dialog questions.

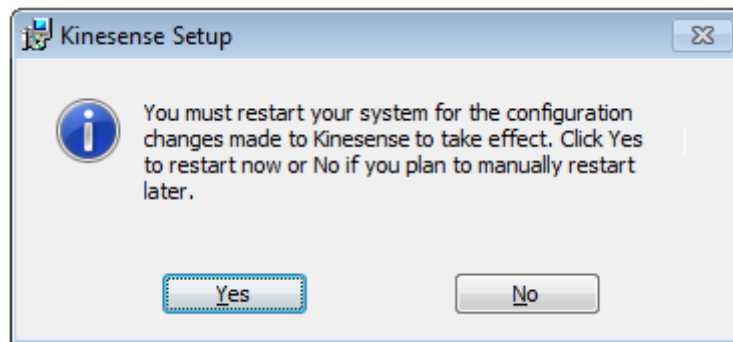
You may be asked to reboot your computer before install continues. Please accept this and wait for reboot.

When all prerequisites have been installed, the Kinesense for Milestone Install Dialog will appear.



Please click "I accept the terms in the License Agreement". Then click "Install".

When install is complete, you will be asked to reboot the computer.



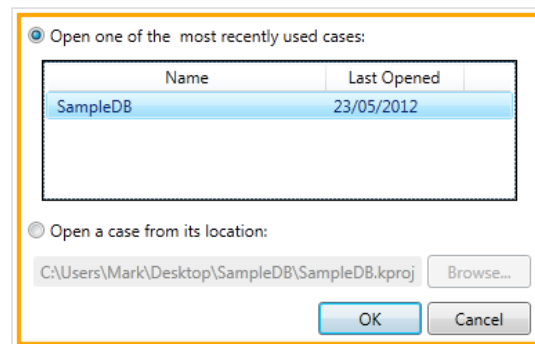
If there are unexpected dialogs during install, please refer to the "Troubleshooting Install" section at the end of this document.

## Opening Kinesense for Milestone

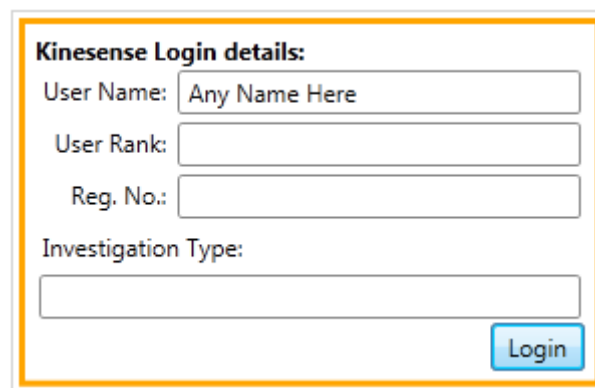
To Launch Kinesense for Milestone, double-click the desktop icon:



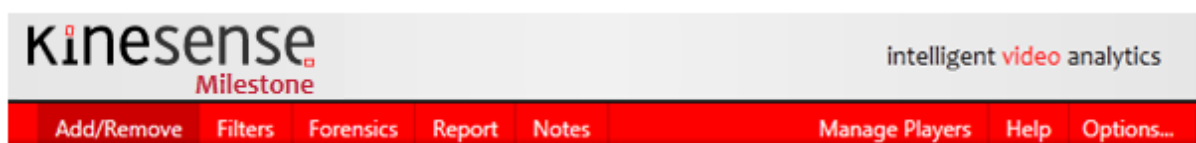
The first screen will ask you to choose whether to 'Open Existing Case' or 'Create New Case'. A Kinesense 'Case' is equivalent to a 'Database'.



Next you should login.

A login form titled 'Kinesense Login details:'. It contains four input fields: 'User Name:' with the placeholder text 'Any Name Here', 'User Rank:', 'Reg. No:', and 'Investigation Type:'. A 'Login' button is located at the bottom right of the form.

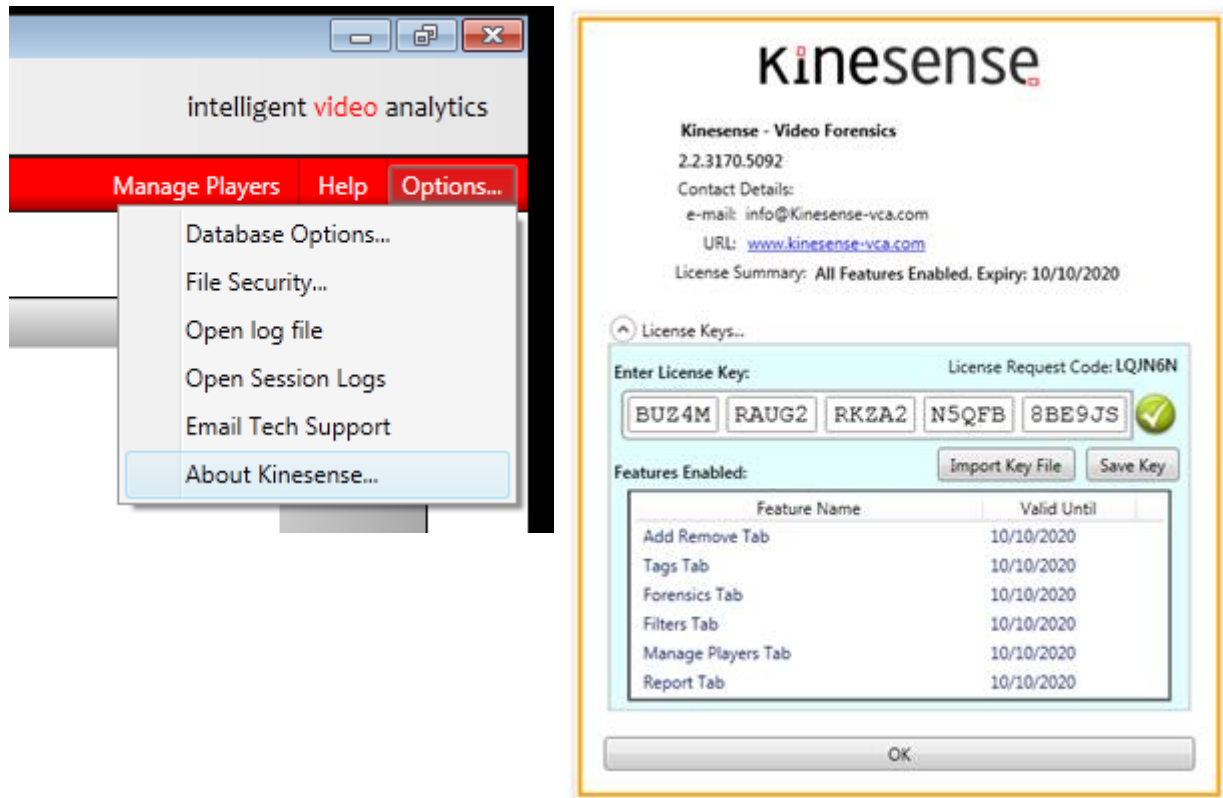
Next you will see Kinesense for Milestone main screen. You have 8 options, or 'Tabs':



First, enter the license Key provided using the steps outlined in "Demo License Key" section below.

## Enter Demo License Key

Kinesense for Milestone requires a License Key to operate. To enter the key, open Kinesense for Milestone and click “Options” button (Top right of screen), and then click “About Kinesense...”

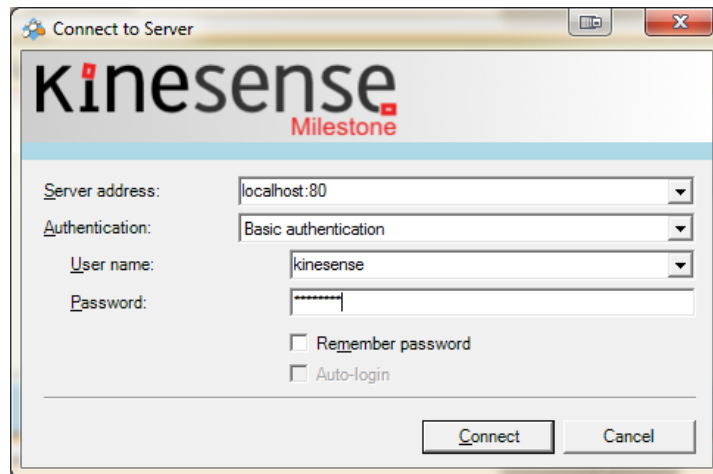


To receive a Demo License please note the “License Request Code” (middle left of About Box) and email this code to Kinesense on [info@kinesense-vca.com](mailto:info@kinesense-vca.com) When this is received, we can generate a demo license for 30 day evaluation period.

When you have received the license key from Kinesense, enter it in the About box under “Enter License Key” and click “Save Key”.

## Add Milestone Video

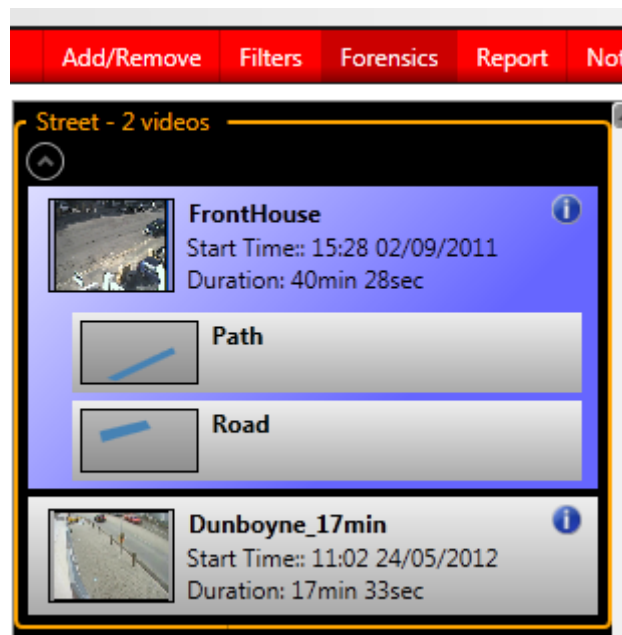
When adding video from a Milestone server Add Video in the Add/Remove tab is selected. From here the Milestone server must be logged onto using the servers address, username and password.



Once log on has been completed a list of cameras will appear. Select the camera and the times from the video that needs to be imported. When the camera and times are selected click Begin Import and the video will start importing into Kinesense.

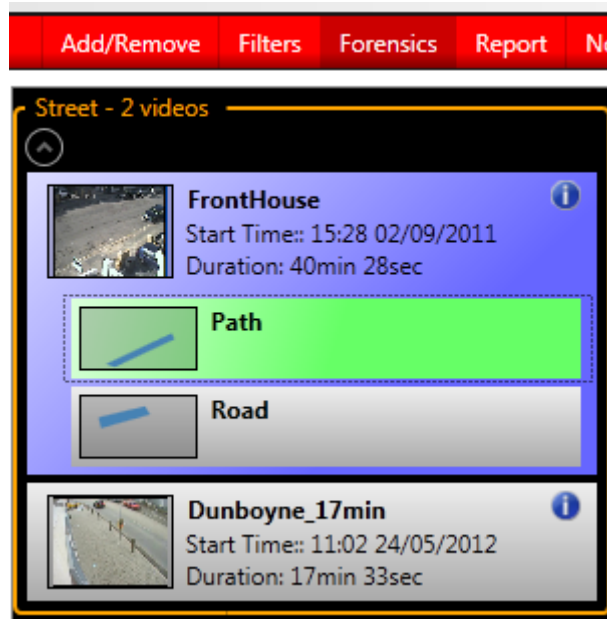
## Search a Video

Select the "Forensic" tab. This will show you the video review and search screen. You will see two example videos in the Video List on the left. Click the first one: "Front House". This will populate the Timeline at the bottom of the screen.



The shaded blue region represents the area of the Timeline containing video data for this video. You can click at any point to see the video frames. The orange 'blobs' represent detected movement at those times. Click at these points to see what is happening.

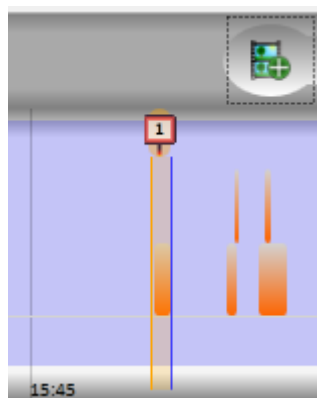
The default view shows everything which is happening in the scene. To search for activity in specific regions, you should select a 'Filter'. There are two Filters already defined in the "FrontHouse" video. These are "Path" and "Road".



Click on the "Path" filter. You will see that Kinesense for Milestone searches the timeline and now only shows events which happen in the area of the filter.

## Make a Video Report

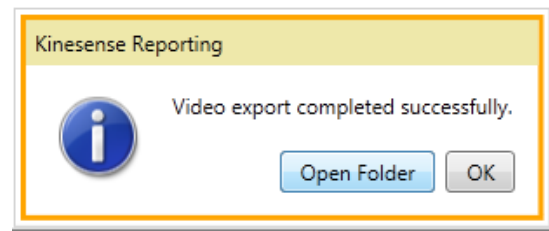
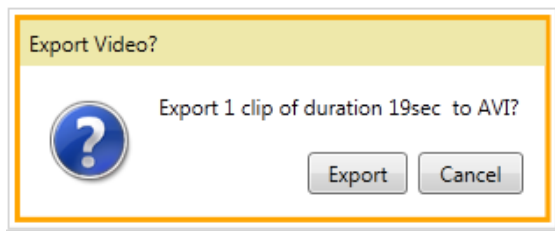
Generating a video report is easy. Using the mouse, click (left button) a point in the blue region of the timeline. Keep the mouse button pressed and move the mouse to the right. Unclick. Now a section of the video is highlighted in orange. To add this clip to a report, click the "Add Avi Clip" button.



To export a report containing this clip, select the "Report" tab. Click the "AVI" button. You will be asked to confirm and specify a file name. The clip will export to the filename specified. When it is



completed, click “Open Folder” to see the file. Double click on the video file to play in Windows Media Player.

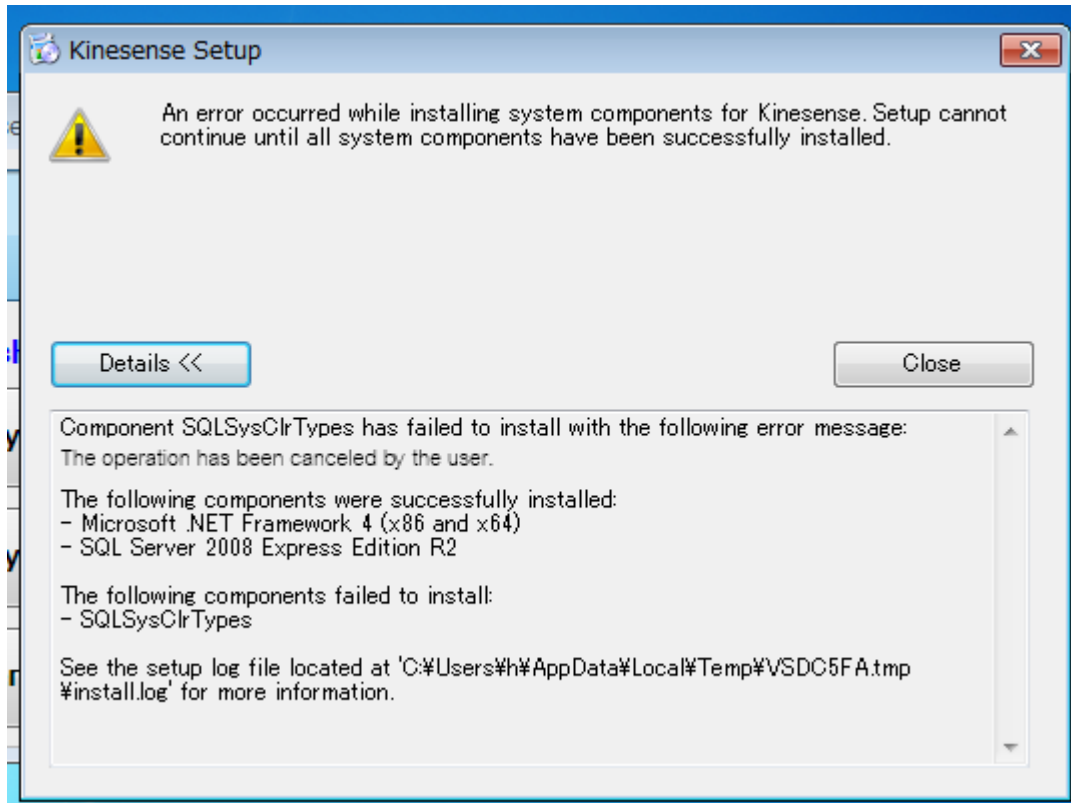


Kinesense Milestone has many tools and features for importing, processing and searching video, and for exporting clips, annotating them, making reports and keeping notes on investigations. For further details, please refer to the full user manual on the supplied DVD or contact Kinesense technical support and we will be delighted to speak with you.

## Troubleshooting Install

On some systems, the install sometimes stops during installing the SQL CLR Types prerequisite. The error given is:

**“The operation has been cancelled by the user.”**



This can happen if the computer is due for a reboot following windows update. The solution is to reboot your computer and restart install as before. The install will continue from where it stopped previously.

If this issue continues, you may have to complete the install manually. To do this, open the contents of the Installation DVD in Explorer and locate the folder named "SqlSysClrTypes\_k". Locate the file "SqlSysClrTypes(x86)" and double click. Follow the wizard and accept all default options. Repeat for "SqlSysClrTypes(x64)".

When this is completed, locate the file "Kinesense\_Milestone\_Installer\_2\_1\_2755\_21052.msi" and double click. Complete install steps as above. Reboot on completion.

If you continue to have problems, please contact Kinesense for technical support.