



## USER MANUAL

MODEL: LPL-1-US

Painting and Shelf light with LED technology



### READ THIS MANUAL BEFORE USING YOUR LAMP

Thank you for purchasing this Artkalia lamp, which is designed to meet your expectations in terms of technology, reliability and operation. To ensure that the product lasts as long as possible, please read carefully and follow these instructions.

#### Description:

This lamp works with high technology LED bulbs. This product is specially designed for indoor usage.

#### Before to start using:

- a) Inspect the lamp before the assembly. Make sure it does not have breakdowns, damages or damaged cables, connections or wires of copper exposed to air or without insulation. The above case could happen due to occasional damages during the transportation, though all the cable connections have been made correctly in the factory and are ready for use.
- b) To prevent damages to the connections, avoid pulling the content when you remove them from the package or during installation.
- c) Make sure that the voltage of your area corresponds to the one shown on the label of the lamp.
- d) Do not place the lamp where there is heat, moisture, humidity generated or close to combustible materials.

#### Precautions for the power system and the lamp:

The guarantee applies only when the product has been used in accordance with these instructions.

- **Do not use the adapter or the lamp in open air or expose it to rain, humidity or other liquids.**
- The adapter should be used only with the lamp in the same package; do not use it with other products.
- The lamp cannot be used with another adapter other than the one included in its package.
- **Do not attempt to open or dismantle the adapter or the lamp; this can cause you harm or risk of injury.**
- **Never use the adaptor close to a heat source and keep it out of reach of children.**
- To avoid risk of electric shock, when cleaning your lamp, first of all disconnect the lamp, and do not use water or detergents for cleaning.
- Be careful when operating and handling the product: even it is resistant and solid, improper use can cause damages, scratches or permanent marks.
- **Disconnect the adaptor's plug if not going to be used for a long time.**
- This device works with Light-Emitting Diodes (LEDs) that cannot be changed. Do not ever attempt to dismantle the device or remove the LEDs because they can damage your eyes if directed at a close distance.

#### Technical features:

This product is designed with the new technology of LED for energy savings. Artkalia has chosen the best components to ensure the products with high quality.

- Number of LEDs: 24 LED of white light.
- Consumption of power: 2W
- Color temperature: 3,000 °K
- Lifetime: 30,000 hours.
- The lamp has a base and head in aluminum finishing, with a switch on the lamp base and a white cable of 2.6 meters long.
- White cable of 0.5m with adaptor, and cable of 0.3m with plug.

Standards and certifications: UL - CE - FCC - ROHS - NOM/LOGIS

Warranty term: 1 year.

**Electrical Specifications:**

PRODUCT: 12 V  250 mA

POWER ADAPTER AC/DC:

INPUT: 100-240 V~ 50-60 Hz 3W

OUTPUT: 12 V  250 mA

**Attention:**

You must not dispose of this device along with household waste. Ask your community to find out the best disposal way of this device. In fact, electrical and electronic products may contain some substances that are harmful to the environment or human health and must be recycled properly.

Artkalia or distributor are not liable for improper use of the product, or improper use of the adapter with other products that could be defective, dangerous or inappropriate.

**Instructions for use:**

Before installing the lamp make sure it is disconnected from the power supply.

**First use:**

Carefully remove the lamp from the package.

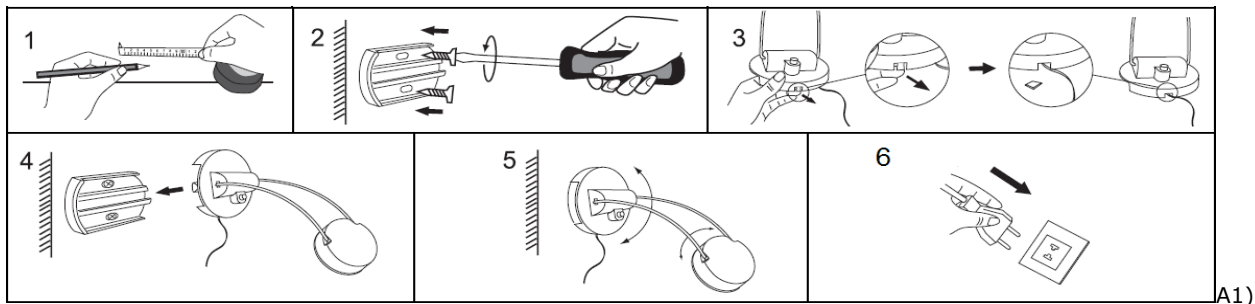


The body of the lamp is only one piece. For its placement, just unpack it and select the location where you want to place it.

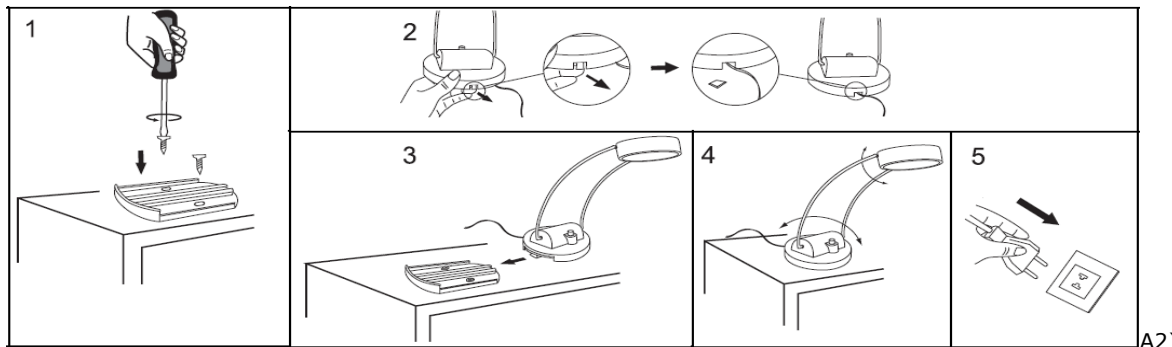
**Possibilities of usage:**

Make sure you follow the steps and fix your lamp with screws (2 included) on a wall (see Mounting Option A1) or a shelf (see Mounting Option A2). Before the installation, remove the baseboard by sliding it off.

- A1) Use this vertical mounting option to fix the lamp on the wall to illuminate a picture, a statue, etc.
- A2) Use this horizontal mounting option to fix the lamp on the edge of a shelf to illuminate the interior shelf space.



A1)



A2)

**Turn ON and OFF:**

Press the switch on the base of the lamp to turn ON and OFF.

ARTKALIS LLC / ARTKALIA  
1811 NE 146<sup>th</sup> St  
North Miami, FL 33181  
786 955 6358  
info@artkalia.com

**Location of the ON/OFF switch**

