



# Hog<sup>®</sup> iPC<sup>™</sup> Handbook

Version 1.4.1

## Contacting High End Systems®

### **U.S. and the Americas**

#### ***Sales Department***

High End Systems, Inc.  
2105 Gracy Farms Lane  
Austin, TX 78758 USA  
voice: 512.836.2242  
fax: 512.837.5290  
Toll Free: 800.890.8989

#### ***Customer Service***

High End Systems, Inc.  
2105 Gracy Farms Lane  
Austin, TX 78758 USA  
voice: 800.890.8989  
fax: 512.834.9195  
toll free: 800.890.8989  
email: [support@flyingpig.com](mailto:support@flyingpig.com)

#### ***West Coast U.S.***

High End Systems, Inc.  
8200 Haskell Avenue  
Van Nuys, CA 91406 US  
voice: 818.947.0550  
fax: 818.908.8975

#### **World Wide Web:**

<http://www.flyingpig.com>



Copyright © 2006 by High End Systems. All Rights Reserved

## Changes

Information and specifications in this document are subject to change without notice. Certain specifications may be the result of future software releases. High End Systems, Inc. assumes no responsibility or liability for any errors or inaccuracies that may appear in this manual.

## Trademarks

High End Systems, the Flying Pig Systems logo, the WHOLEHOG, WHOLEHOG II and WHOLEHOG III logos are registered trademarks of High End Systems, Inc., or High End Systems, Europe Ltd. Flying Pig Systems, Effects Engine, and Hog are registered trademarks of Flying Pig Systems. iPC is a trademark of High End Systems, Inc. Windows is a registered trademark of Microsoft corporation. Aspen, Aspen Touch Monitor, ATM, Auto-Sensing Brightness Adjustment and the Aspen logo are trademarks of Aspen Touch Solutions, Inc. IntelliTouch, SecureTouch, AccuTouch, Entuitive, and MonitorMouse are trademarks of Elo TouchSystems, Inc.

All other brand names and product names used in this book are trademarks, registered trademarks, or trade names of their respective holders.

## Patents

This product may use one or more of the following patents: US 4,392,187; US 4,602,321; US 4,688,161; US 4,701,833; US 4,709,311; US 4,779,176; US 4,800,474; US 4,962,687; US 4,972,306; US 4,980,806; US 5,010,459; US 5,031,078; US 5,073,847; US 5,078,039; US 5,186,536; US 5,209,560; US 5,278,742; US 5,282,121; US 5,307,295; US 5,329,431; US 5,331,822; US 5,367,444; US 5,402,326; US 5,430,629; US 5,432,691; US 5,454,477; US 5,455,748; US 5,506,762; US 5,515,254; US 5,537,303; US 5,545,951; US 5,580,164; US 5,590,954; US 5,590,955; US 5,640,061; US 5,647,662; US 5,665,305; US 5,691,886; US 5,728,994; US 5,758,955; US 5,758,956; US 5,769,527; US 5,774,273; US 5,798,619; US 5,806,951; US 5,823,661; US 5,825,548; US 5,828,485; US 5,829,868; US 5,857,768; US 5,882,107; US 5,934,794; US 5,940,204; US 5,945,786; US 5,953,152; US 5,980,066; US 6,048,080; US 6,327,103; US 6,048,081; US 6,057,958; US 6,054,816; US 6,126,288; US 6,142,652; US 6,172,822; US 6,188,933; US 6,208,087; US 6,219,093; US 6,220,730; US 6,241,366; US 6,255,787; US 6,256,136; US 6,278,542; US 6,288,828; US 6,327,103; US 6,421,165; US 6,430,934; US 6,466,357; US 6,502,961; US 6,693,392; US 6,719,433; US 6,347,113; US D350,408; US D359,574; US D360,404; US D365,165; US D366,712; US D370,080; US D372,550; US D377,338; US D381,740; US D409,771; EP 0662275; EP 0767398; DE 621495; DE 655144; DE 797503; EP 0475082; GB 2 043 769 B; GB 2 055 842 B; GB 2 283 808 B; GB 2 290 134 B; GB 2 291 814 B; GB 2 292 530 B; GB 2 292 896 B; GB 2 294 909 B; GB 2 295 058 B; GB 2 303 203 B; GB 2 306 887 B; GB 2 307 036 B; GB 2 316 477 B; MR0862-1996; M9,604,224.9

Hog iPC Console Handbook  
P/N 60600244 Version 1.4.1 June, 2006  
Printed in the USA



# Declaration of Conformity

According to ISO/IEC Guide 22 and EN45104

Manufacturer's name: High End Systems, Inc.  
Distributor's name: High End Systems, Inc.  
Distributor's address: 2105 Gracy Farms Lane, Austin, Texas, 78758

Declares that the product:

Product Name: Hog iPC  
All Product Number: ALL  
All Product Options: ALL

Conforms to the following EEC directives:

73/23/EEC, as amended by 93/68/EEC  
89/336/EEC, as amended by 92/31/EEC and 93/68/EEC

Equipment referred to in this declaration of conformity was first manufactured in compliance with the following standards in 2005:

**Safety:** EN60950:2000

**EMC:** EN55022: 1998: Class A ITE  
EN61000-3-2  
EN61000-3-3  
EN55024:1998  
EN61000-4-2: Level 3, Class 2  
EN61000-4-3: 1995 Level 2 (3V/m)  
EN61000-4-4: 1995 Level 2 (1/.5kV)  
EN61000-4-5: 1995 Level 3 (2/1kV)  
EN61000-4-6: 1965 Level 2 (3Vrms)  
EN61000-4-11:1994

I, the undersigned, hereby declare that the equipment specified above conforms to the above Directives and Standards.



USA, Wednesday, June 28, 2006  
Kenneth Stuart Hansen, Compliance Engineer

## FCC Information

This equipment has been tested and found to comply with the limits for a Class A digital device, pursuant to part 15 of the FCC rules. These limits are designed to provide reasonable protection against harmful interference when the equipment is operated in a commercial environment. This equipment generates, uses, and can radiate radio frequency energy and, if not installed and used in accordance with the instruction manual, may cause harmful interference to radio communications. Operation of this equipment in a residential area is likely to cause harmful interference, in which case the user will be required to correct the interference at his own expense.

## Product Modification Warning

High End Systems products are designed and manufactured to meet the requirements of United States and International safety regulations. Modifications to the product could affect safety and render the product non-compliant to relevant safety standards.

### Mise En Garde Contre La Modification Du Produit

Les produits High End Systems sont conçus et fabriqués conformément aux exigences des règlements internationaux de sécurité. Toute modification du produit peut entraîner sa non conformité aux normes de sécurité en vigueur.

### Produktmodifikationswarnung

Design und Herstellung von High End Systems entsprechen den Anforderungen der U.S. Amerikanischen und internationalen Sicherheitsvorschriften. Abänderungen dieses Produktes können dessen Sicherheit beeinträchtigen und unter Umständen gegen die diesbezüglichen Sicherheitsnormen verstoßen.

### Avvertenza Sulla Modifica Del Prodotto

I prodotti di High End Systems sono stati progettati e fabbricati per soddisfare i requisiti delle normative di sicurezza statunitensi ed internazionali. Qualsiasi modifica al prodotto potrebbe pregiudicare la sicurezza e rendere il prodotto non conforme agli standard di sicurezza pertinenti.

### Advertencia De Modificación Del Producto

Los productos de High End Systems están diseñados y fabricados para cumplir los requisitos de las reglamentaciones de seguridad de los Estados Unidos e internacionales. Las modificaciones al producto podrían afectar la seguridad y dejar al producto fuera de conformidad con las normas de seguridad relevantes.

### 製品変更に対する警告

High End Systems 製品はアメリカ合衆国及び、国際安全基準の必要条件を満たすよう設計及び製造されています。この為、製品に対する変更は安全に対して影響を及ぼす場合及び、関連安全基準に満たない状態にする場合があります。

## Important Safety Information

Instructions pertaining to continued protection against fire, electric shock, and injury to persons are found in the *Safety Information Section p.73*. Please read all instructions prior to assembling, mounting, and operating this equipment.

### Important: Informations De Sécurité

Les instructions se rapportant à la protection permanente contre les incendies, l'électrocution et aux blessures corporelles se trouvent dans *Importantes Informations Sur La Sécurité p.74*. Veuillez lire toutes les instructions avant d'assembler, de monter ou d'utiliser cet équipement.

### Wichtige Sicherheitshinweise

Sicherheitsanleitungen zum Schutz gegen Feuer, elektrischen Schlag und Verletzung von Personen finden Sie in *Wichtige Hinweise Für Ihre Sicherheit p.75*. Vor der Montage, dem Zusammenbau und der Inbetriebnahme dieses Geräts alle Anleitungen sorgfältig durchlesen.

### Informazioni Importanti Di Sicurezza

Le istruzioni sulla protezione da incendi, folgorazione e infortuni sono contenute nell' *Importanti Informazioni Di Sicurezza p.76*. Si prega di leggere tutte le istruzioni prima di assemblare, montare e azionare l'apparecchiatura.

## Informacion Importante De Seguridad

En el *Información Importante De Seguridad p.77* se encuentran instrucciones sobre protección continua contra incendios, descarga eléctrica y lesiones personales. Lea, por favor, todas las instrucciones antes del ensamblaje, montaje y operación de este equipo.

### 重要な安全に関する情報

継続した火災、感電、及び、人の負傷からの保護に関する指示は、安全に関する情報 *p.78* を参照して下さい。

この装置を組み立て、設置、操作等を行う前に全ての指示を読んで下さい。

## Warranty Information

**Limited Warranty:** Unless otherwise stated, your product is covered by a one year parts and labor limited warranty. It is the owner's responsibility to furnish receipts or invoices for verification of purchase, date, and dealer or distributor. If purchase date cannot be provided, date of manufacture will be used to determine warranty period.

**Returning an Item Under Warranty for Repair:** It is necessary to obtain a Return Material Authorization (RMA) number from your dealer or point of purchase BEFORE any units are returned for repair. The manufacturer will make the final determination as to whether or not the unit is covered by warranty.

Any Product unit or parts returned to High End Systems must be packaged in a suitable manner to ensure the protection of such Product unit or parts, and such package shall be clearly and prominently marked to indicate that the package contains returned Product units or parts and with an RMA number. Accompany all returned Product units or parts with a written explanation of the alleged problem or malfunction. Ship returned Product units or parts to: High End Systems, 2105 Gracy Farms Lane, Austin, Texas 78758.

**Note: Freight Damage Claims are invalid for products shipped in non-factory boxes and packing materials.**

**Freight:** All shipping will be paid by the purchaser. Under no circumstances will freight collect shipments be accepted.

REPAIR OR REPLACEMENT AS PROVIDED FOR UNDER THIS WARRANTY IS THE EXCLUSIVE REMEDY OF THE CONSUMER. HIGH END SYSTEMS, INC. MAKES NO WARRANTIES, EXPRESS OR IMPLIED, WITH RESPECT TO ANY PRODUCT, AND HIGH END SPECIFICALLY DISCLAIMS ANY WARRANTY OF MERCHANTABILITY OR FITNESS FOR A PARTICULAR PURPOSE. HIGH END SHALL NOT BE LIABLE FOR ANY INDIRECT, INCIDENTAL OR CONSEQUENTIAL DAMAGE, INCLUDING LOST PROFITS, SUSTAINED OR INCURRED IN CONNECTION WITH ANY PRODUCT OR CAUSED BY PRODUCT DEFECTS OR THE PARTIAL OR TOTAL FAILURE OF ANY PRODUCT REGARDLESS OF THE FORM OF ACTION, WHETHER IN CONTRACT, TORT (INCLUDING NEGLIGENCE), STRICT LIABILITY OR OTHERWISE, AND WHETHER OR NOT SUCH DAMAGE WAS FORESEEN OR UNFORESEEN.

Warranty is void if the product is misused, damaged, modified in any way, or for unauthorized repairs or parts. This warranty gives you specific legal rights, and you may also have other rights specific to your locality.

---

## Table of Contents

---

<b>Contacting High End Systems®</b> .....	<b>ii</b>
Trademarks .....	iii
Patents .....	iii
Declaration of Conformity .....	iv
FCC Information .....	v
Product Modification Warning .....	v
Warranty Information .....	vi
<b>Product Overview and Specifications</b>	
<b>The Hog® iPC™ Console</b> .....	<b>3</b>
<b>Features</b> .....	<b>4</b>
<i>DMX Control Capability</i> .....	4
<i>Hardware</i> .....	4
<i>Connectivity</i> .....	4
<i>Software</i> .....	5
<b>Hog iPC Console and Optional Accessories</b> .....	<b>6</b>
<b>Terminology</b> .....	<b>6</b>
<b>Specifications</b> .....	<b>7</b>
<i>Mechanical</i> .....	7
Console .....	7
Road Case .....	7
System Weight in Roadcase .....	7
<i>Electrical</i> .....	8
Console Power Supply .....	8
Touchscreen External Power Supply .....	8
<b>System Setup</b>	
<b>Setting up the Console</b> .....	<b>11</b>
<i>Unpacking</i> .....	11
<i>Using the Roadcase</i> .....	11
<i>Hog iPC Back Panel Connections</i> .....	12
<i>USB Device Support</i> .....	12
<i>Attaching an Optional Third Monitor</i> .....	13
<b>Starting the Console</b> .....	<b>14</b>
<b>Shutting Down</b> .....	<b>14</b>

---

## Using the Hog iPC Configuration Panel

<b>Accessing the Hog iPC Configuration Panel</b> .....	<b>17</b>
<b>Hog iPC Configuration Panel Components</b> .....	<b>17</b>
<b>Hog iPC Console Options</b> .....	<b>18</b>
<i>Start-up OS</i> .....	18
Hog 2PC Option: Window Positions .....	18
Hog 2PC Option: Auto Launch .....	19
Hog 2PC Option: Enable Keyboard Shortcuts .....	19
<i>File Management</i> .....	20
<i>Burn CD</i> .....	22
<b>Upgrade Options</b> .....	<b>23</b>
<b>Hardware Options</b> .....	<b>24</b>
<i>Hardware Configuration</i> .....	24
Setting Time and Date .....	24
Touchscreen Options .....	25
Calibrating Touchscreens	25
Swapping Touchscreens	25
Detecting Touchscreens	25
Monitor 3 .....	26
<i>Hardware Diagnostics</i> .....	26
<i>Hog iPC Information</i> .....	27
<b>Aspen Monitor Controls</b> .....	<b>28</b>
<i>Monitor Control Buttons</i> .....	28
<i>OSD Menu and Function</i> .....	29
<b>ELO Monitor Controls</b> .....	<b>30</b>
<i>Monitor Control Buttons</i> .....	30
<i>Lock and Unlock Options</i> .....	30
<i>Setting Monitor Controls in the OSD Menu System</i> .....	31
<i>OSD Control Options</i> .....	31
<i>Monitor Display Angle</i> .....	31

## Using Hog® 3PC Software

<b>Differences Between Hog iPC and Wholehog 3 Consoles</b> .....	<b>35</b>
<i>Networking</i> .....	35
<i>Patching</i> .....	35
<i>Trackball Preferences</i> .....	35
<b>Launching Hog 3PC</b> .....	<b>36</b>



---

<b>Working with Hog 3PC Show Files.....</b>	<b>36</b>
<i>Creating .....</i>	36
<i>Transferring .....</i>	36
<i>Backing Up .....</i>	37
<i>Exiting Hog 3PC .....</i>	37
<b>Configuring External USB DMX Widgets with Hog 3PC .....</b>	<b>38</b>
<b>USB Playback Wings .....</b>	<b>39</b>
<b>MIDI and Linear Timecode .....</b>	<b>40</b>
<i>Timecode input .....</i>	40
<i>MIDI .....</i>	40
<b>Networking with Wholehog 3 shows .....</b>	<b>40</b>
 <b>Using Hog® 2PC Software</b>	
<b>Hog 2PC Backwards Compatibility.....</b>	<b>43</b>
<b>Differences Between Hog iPC and Wholehog 2 Consoles .....</b>	<b>44</b>
<i>Functional Differences .....</i>	44
<i>Frontpanel Component Differences .....</i>	44
Encoder Wheels .....	44
Trackball .....	44
Key Functionality .....	45
Playback Faders .....	45
<b>Launching Hog 2PC .....</b>	<b>46</b>
<b>Configuring External USB DMX Widgets with Hog 2PC .....</b>	<b>47</b>
<b>Configuring USB Playback Wings with Hog 2PC .....</b>	<b>48</b>
<b>Using an Optional 3rd Monitor with Hog 2PC .....</b>	<b>49</b>
<b>The USB Device Status Panel .....</b>	<b>50</b>
<i>Desk Lights .....</i>	50
<i>DMX Outputs .....</i>	50
<i>Linear Time Code (LTC) Input .....</i>	50
<i>Expansion Wings .....</i>	50
<b>Working with Hog 2PC Show Files.....</b>	<b>51</b>
<i>Saving and Loading .....</i>	51
<i>Changing the Show Folder .....</i>	51
<i>Transferring Hog 2PC Show Files .....</i>	51
<i>Printing to File .....</i>	52
<i>Exiting Hog 2PC .....</i>	52

---

<b>Advanced Operations .....</b>	<b>53</b>
<i>Displaying Touchscreen Windows .....</i>	<i>53</i>
<i>Changing Window Positions .....</i>	<i>53</i>
<i>Restoring Default Window Positions .....</i>	<i>54</i>
<i>Keyboard Shortcuts .....</i>	<i>54</i>
<b>Hog 2PC Keyboard Shortcuts .....</b>	<b>55</b>
<b>Maintenance and Troubleshooting</b>	
<b>Basic Hardware Troubleshooting .....</b>	<b>59</b>
<i>Troubleshooting Console Problems .....</i>	<i>59</i>
<i>Troubleshooting Touchscreen Problems .....</i>	<i>60</i>
<b>Hog iPC Console Frequently Asked Questions .....</b>	<b>61</b>
<i>Hardware .....</i>	<i>61</i>
<i>Software .....</i>	<i>61</i>
<i>Hog 3PC Application .....</i>	<i>62</i>
<i>Hog 2PC Application .....</i>	<i>63</i>
<b>Cleaning the iPC Console and Touchscreens.....</b>	<b>63</b>
<b>System Restore</b>	
<b>Restoring the Hog iPC System Files .....</b>	<b>67</b>
<i>Before You Begin .....</i>	<i>67</i>
<i>Using the Hog iPC System Restore CD .....</i>	<i>67</i>
<b>Upgrading Application Files and Configuration.....</b>	<b>69</b>
<i>Upgrading Applications .....</i>	<i>69</i>
<i>Restoring Touchscreen Configuration .....</i>	<i>69</i>
<b>Safety Information</b>	
<b>Safety Information .....</b>	<b>73</b>
<b>Importantes Informations Sur La Sécurité.....</b>	<b>74</b>
<b>Wichtige Hinweise Für Ihre Sicherheit.....</b>	<b>75</b>
<b>Información Importante De Seguridad .....</b>	<b>76</b>
<b>Importanti Informazioni Di Sicurezza .....</b>	<b>77</b>
<b>Vigtig Sikkerhedsinformation.....</b>	<b>77</b>
<b>Japanese.....</b>	<b>78</b>

# **Product Overview and Specifications**



---

## The Hog® iPC™ Console

---

The Hog® iPC™ console offers maximum flexibility for productions in an economical, mid-range controller. It is designed to take full advantage of the Wholehog 3 operating system's advanced features and functionality while being backwards compatible with the discontinued, but widely-used Wholehog 2 operating system.

The Hog iPC console houses a PC motherboard and hard drive optimized to operate with the Hog 3PC application. The Windows® XP embedded (XPe) operating system — a streamlined version of Windows XP, is custom configured for its specific use within the Hog iPC console.

Hog iPC uses four universes of DMX output direct from the console, expandable to eight universes using USB DMX Widgets or a USB DMX Super Widget. In addition the Hog iPC console includes one SMPTE input, and MIDI in/out/thru capabilities as well as two 12-inch high-brightness color touchscreens with adjustable viewing angles. A backlit trackball with four buttons can be configured to provide cursor and position control.

Ten Playback faders feature familiar Wholehog 3 playback controls (choose, go, pause & flash). Hog iPC offers an internal hard drive, and re-writeable CD-ROM drive; five Universal Serial Bus ports for touchscreens, external drives, printer, and Wholehog 3 accessories (e.g. playback wing, expansion wing, and additional USB DMX Widgets). A third monitor or touchscreen can also be connected to the DVI video output to provide maximum viewing flexibility.

An Ethernet connector allows communications with Hog 3PC computers, other Hog iPC consoles, and Wholehog 3 console systems. Remote Focus functionality is available when networked with a computer or tablet PC running Hog 3PC software.

In addition to operating optimally with Hog 3PC software, the Hog iPC console is backwards compatible with the Hog® 2PC application. Utilizing the Hog iPC console internal hardware, the Hog 2PC application provides four universes of DMX output (expandable to seven), as well as one SMPTE input and MIDI in/out/thru capabilities.

The Hog iPC console is constructed of precision-machined aluminum in a familiar Wholehog blue style with a tough wear-resistant anodized finish.

**Note:** *Although show files can be programmed using either Hog 3PC or Hog 2PC software on the Hog iPC console, show files remain specific to each application and are not interchangeable.*

## Features

---

Note that some of the following features will not be available on the Hog iPC console when operating the classic Hog® 2PC software. In addition, some features may be the result of future Hog 3PC software releases.

### DMX Control Capability

- 2048 to 4096 DMX-512 channels (depending on number of external USB DMX Widgets)
- Unlimited number of simultaneous crossfades
- Thousands of cues, cuelists, cue parts, chases, effects, groups, palettes, pages, macros

### Hardware

- Console construction of precision-machined aluminum with a tough wear-resistant anodized finish.
- Four universes of DMX output direct from the console, expandable to eight with USB DMX Widgets or USB DMX Super Widget
- Two 12 inch high-brightness color touchscreens, with adjustable viewing angles
- Third monitor or touchscreen capabilities when connected to DVI port
- Backlit trackball with four buttons that can be configured for cursor and position control
- Ten Playback faders with familiar Wholehog 3 playback controls (Choose, Go, Pause & Flash)
- Integrated PC motherboard operating via Windows XP Embedded
- Internal 40 gigabyte hard drive, and re-writeable CD-ROM drive
- Five Universal Serial Bus ports for touchscreens, external drives, printer, and Wholehog 3 accessories (e.g. playback wing, expansion wing, and additional USB DMX Widgets)
- Ethernet connector allows communications with Hog 3PC computers, Hog iPC consoles, and Wholehog 3 console systems
- Realtime clock
- Dual LED desklights and feedback LED's dimmable
- Designed for easy maintenance
- Custom integrated roadcase
- Auto-ranging mains input (90-250 VAC)

### Connectivity

- Supports up to four USB Playback Wings
- Supports Wholehog 3 Expansion Wing
- MIDI Input, Output, and Thru supports Midi Show Control and Midi Time Code
- Single Linear Time Code (SMPTE) input via 3 pin female XLR connector

- Connectivity with ESP Vision and WYSIWYG via Ethernet
- Wired and wireless networking ability with multiple Hog 3PC computers, Hog iPC consoles, and Wholehog 3 console systems
- Remote Focus capabilities when networked with a computer or tablet PC running Hog 3PC software
- Hog 3PC software is the standard operating system. Easily switchable to Hog 2PC software for maximum flexibility

## Software

- Personalities for all major automated fixture types in built-in library
- Specialized libraries and functions allow ease of programming for conventional fixtures
- Consistent control interface for all fixtures, regardless of manufacturer or type, makes it simple to work with different fixture types, or to exchange one type for another even after a show has been programmed
- Quick function to add new fixtures that replicate existing programming
- Fully calibrated color picker allows seamless color matching between different fixture types and with gels and dichroics
- Intuitive programming interface
- Instant access to fixtures, groups and palettes via touchscreen displays, and familiar command line syntax
- Intuitive viewing and editing of all programming through powerful spreadsheet displays
- Multi-level Undo/Redo
- Cues, Scenes and Palettes can reference other palettes for fast and easily updated programming.
- Unlimited control of timing, with the ability to set individual in and out delay and fade times, as well as crossfade paths, for each parameter of every fixture
- Powerful customizable real-time effects, with independent timing
- Fully customizable playback controls on the console as well as multiple playback wings
- Cuelists and Scenes can be executed directly from the touchscreens for extra flexibility
- Inhibitive intensity masters can be defined for any group of fixtures
- Chases have fully adjustable direction, crossfade percentage, and rate
- Cues and Scenes can be triggered manually, or via timecode or MIDI Show Control
- Learn Timing feature for quick programming with timecode
- Cuelists selectable in tracking and non-tracking mode
- Virtual fader repositioning provides all the features of motorized faders with none of the drawbacks
- Advanced graphical user interface, with emphasis on a clean and easy-to-use operating environment and a high degree of user configurability

- User preferences can be exported and imported from the console separately from the show
- Online help system, including onscreen reference manual
- Up to 8192 multi-parameter fixtures
- System supports up to 65,536 cues, cuelists, scenes and pages
- Unlimited number of concurrent crossfades and effects, running in an unlimited number of concurrent executing cues and cuelists
- Powerful show merging capabilities
- Backup show data to CD-ROM or external drives - can be scheduled to occur automatically
- Easy upgrades of system software from CDROM or external drives

## Hog iPC Console and Optional Accessories

---

	Part Number
Hog iPC Console w/ 2 touchscreen monitors and roadcase	74020001
Optional 12" Aspen ATM-123R Touch Monitor	74080004
Optional 12" ELO touch screen monitor	74080002
Optional 17" ELO touch screen monitor	61040021
USB Hub	61040035
Hog 3PC USB DMX Widget	74040002
Hog 3PC USB DMX Super Widget	74040001
USB Playback Wing	61040039
USB Expansion Wing	75020001

## Terminology

---

The following describes the terminology used throughout this Handbook:

**Key** denotes a physical key on the Hog iPC console.

**Button** refers to a "soft key" on the graphical interface for Hog 3PC or Hog 2PC software.



## Specifications

### Mechanical

#### Console

29.8in x 23.7in x 10.0in  
757mm x 601mm x 254mm

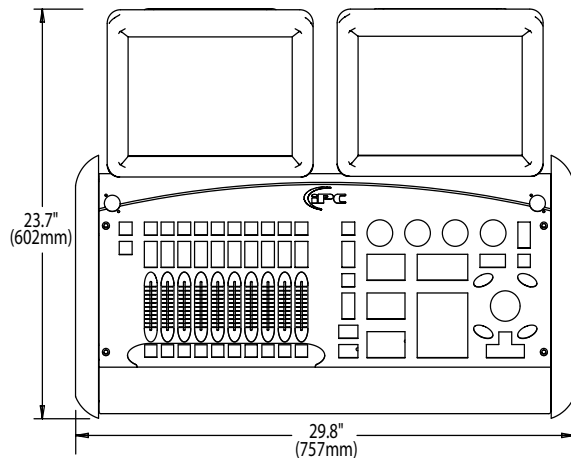
#### Road Case

30.75in x 25.25in x 12.25in  
781mm x 641mm x 311mm

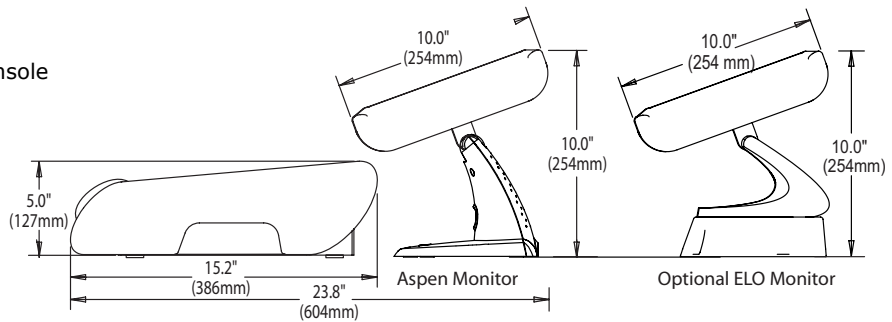
#### System Weight in Roadcase

w/Aspen Monitors: 172 lbs (78 kg)

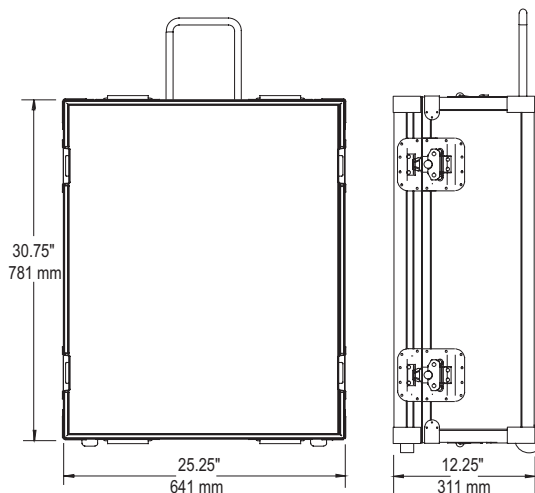
w/ELO Monitors: 166 lbs (52.6 kg)



#### Hog iPC Console



#### Hog iPC Roadcase



## Electrical

### **Console Power Supply**

- Universal voltage PC
- Input voltage 100 –240 vac

### **Touchscreen External Power Supply**

- Input voltage 100 to 240 vac
- Input frequency 47 to 63 hz
- Output voltage 12 vdc
- Output line and load regulation +/- 2%

## **System Setup**



## Setting up the Console

### Unpacking

The Hog iPC console ships in its roadcase and includes the following components:

- Hog® iPC™ console, with two LED desk lights and desk cover
- Two 12" ATM Aspen-123R touch screen monitors, with required cabling and power supply on custom molded monitor platforms
- European and Edison power cords
- Hog iPC System Restore CD
- Hog iPC Handbook
- Wholehog 3 Software User Manual

If you find components missing or damaged, notify both the shipping agent and the sales agent immediately. Before sending anything to the factory, call your High End Systems dealer/distributor for a Return Material Authorization (RMA) number. The factory cannot accept any goods shipped without an RMA number.

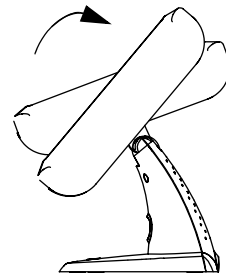


### Using the Roadcase

The Hog iPC roadcase is designed to store, and transport the Hog iPC control system including console, monitors and cabling. It also functions as a platform for the configured Hog iPC system. The console and monitors can be stored connected and ready for use when the lid is removed. Inside the roadcase is a compartment for carrying widgets, as well as cables and documentation.

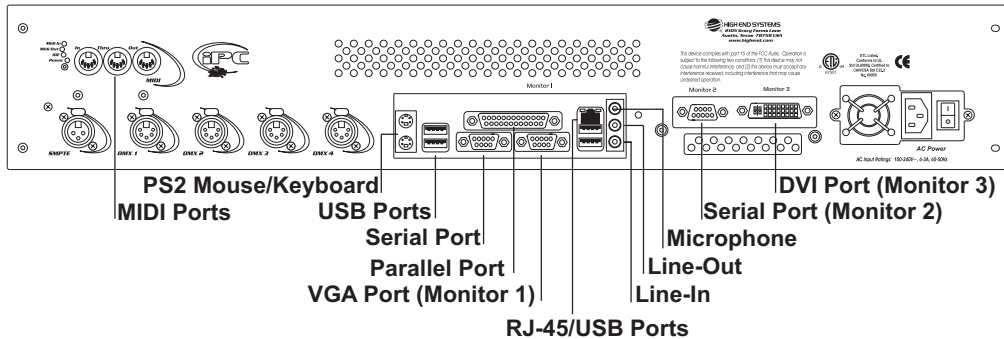


**CAUTION: To avoid damage to the monitors, always tilt them back to the upright position before closing the roadcase lid.**



## Hog iPC Back Panel Connections

In addition to AC power and RGBHV connections, the rear panel provides a variety of connections for system components and external devices.



## USB Device Support

The Windows® XPe operating system installed on the Hog iPC console supports most USB storage devices (hard drives, floppy or zip drives, and flash drives) for show file backup and storage as well as software upgrades.

Some additional USB devices such as keyboards, mice, and printers will also function with the Hog iPC console.

Devices other than those listed above will not be recognized by the Hog iPC console. Check the following table for specific USB device type support. **Plug and play** devices listed below can be connected or reconnected without restarting the console. Some notes are specific to the Hog PC version you are operating on the console.

USB Device Type	Connection Notes
PS/2 Mice and Keyboards	PS/2 devices are not recognized if plugged in after the console has booted. To add a PS/2 keyboard or mouse, restart the console with the mouse or keyboard already plugged in. If accidentally unplugged during operation, most keyboards and mice can successfully be re-plugged without restarting.
USB Keyboards and Mice	<b>Plug and Play</b>
USB Hubs	<b>Plug and Play</b>
USB DMX Widgets and Super widgets	<b>Plug and Play</b> <i>When Operating under the Hog 2PC application only:</i> after plugging in a Widget or SuperWidget with the Hog 2PC Configuration Panel open, you will need to close the Configuration Panel and then reopen it to see the new widget as an option.
USB Playback Wings	<b>Plug and Play</b> <i>When Operating under the Hog 2PC application only:</i> after plugging in a Playback Wing with the Hog 2PC Configuration Panel open, you will need to close the Configuration Panel and then reopen it to see the Playback Wing as an option.

USB Device Type	Connection Notes
USB Flash Drives and Hard Drives	<b>Plug and Play</b>
USB Floppy and ZIP Drives	<b>Plug and Play</b>
ELO Accutouch OR Intellitouch monitors	<b>Plug and Play</b> Can be enabled as a third monitor
USB Printers	Printing functionality is currently under development.
All other USB Devices	The Hog iPC console does not recognize or support USB devices other than those listed above.



**CAUTION: Writing and reading to and from a USB flash drive without properly ejecting the hardware may cause the USB drive to become corrupt. It will no longer be recognized by any windows machine.**

**BEFORE removing any USB memory, Click on the button on the top right hand corner of the File Management screen in the Hog iPC Configuration Panel**

**A confirmation dialog will indicate when it is safe to remove the USB device.**

## Attaching an Optional Third Monitor

The Hog iPC console supports the addition of a 3rd monitor attached to the DVI port on the back of the console (see *Hog iPC Back Panel Connections* on page 12). To connect a VGA monitor, obtain a DVI to VGA adaptor from a computer store. You can also purchase 12" and 17" touchscreens with USB connections from High End Systems (see *Hog iPC Console and Optional Accessories* on page 6). For information on enabling a third monitor, see *Monitor 3* under *Hardware Configuration* on page 24.

## Starting the Console



---

After the system has been connected to AC power, check that the AC power switch on the back panel of the console is toggled to ON.

Once the Hog iPC console boots, a startup animation will play. Two options are available during the 10-second animation:

- Touching the screen anywhere or a left click on the mouse stops the animation and starts the previously selected version of Hog PC software.
- A right click on the mouse stops the animation and launches the Hog iPC Configuration Panel to allow you to choose between the Hog 3PC or Hog 2PC applications. Once assigned, that version becomes the default until it is changed again. The following section describes other functions included in the Hog iPC Configuration Panel.

If neither option is chosen before the animation ends, the Hog iPC console launches the previously selected version of Hog PC and displays its launch screen.


**Note:** *Turning on the AC power switch will boot up the console without having to press the computer power button . However if the computer was shut down from the software and the AC power switch is already on, then locate the computer power switch marked  on the console's back panel or under the wrist rest, lift the safety cover and press to power up the console's internal computer.*

## Shutting Down

---

The best method to use for shutting down the system is through the application you are running. The Hog iPC Configuration Panel, and both the Hog 3PC and Hog 2PC applications have shutdown and restart options built into the user interface.

If an application is frozen, power off the console using the AC power switch on the back panel of the console. Wait ten seconds and restore the AC power.

If the AC power switch is left on after shutting down the software, use the computer power button  to reboot the computer. Alternately, you can cycle the AC power switch off and on to boot the Hog iPC console.



## **Using the Hog iPC Configuration Panel**



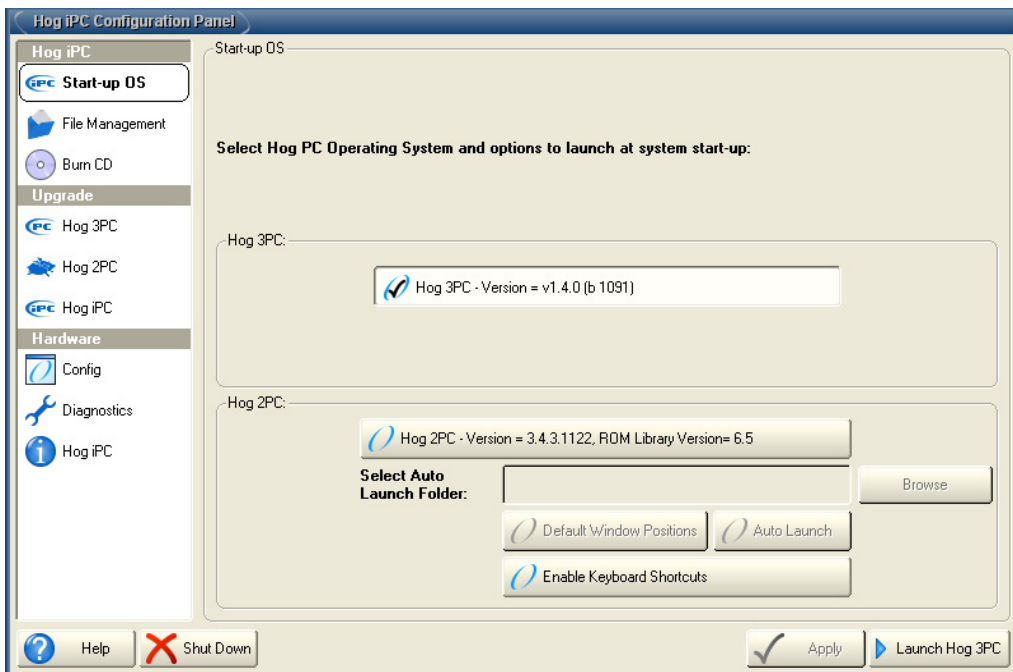
## Accessing the Hog iPC Configuration Panel

The Hog iPC Configuration Panel is the central application for interfacing with the unique elements of the Hog iPC system. This panel provides start-up Hog PC version assignment and configuration, file management, CD burning, and software upgrading as well as hardware configuration and diagnostics.

There are two methods to access the Hog iPC Configuration Panel:

- Right click on the mouse during the 10-second startup animation.
- Press **Quit** in the Hog 3PC application launch window or select **Exit** while in the Hog 2PC application.

## Hog iPC Configuration Panel Components



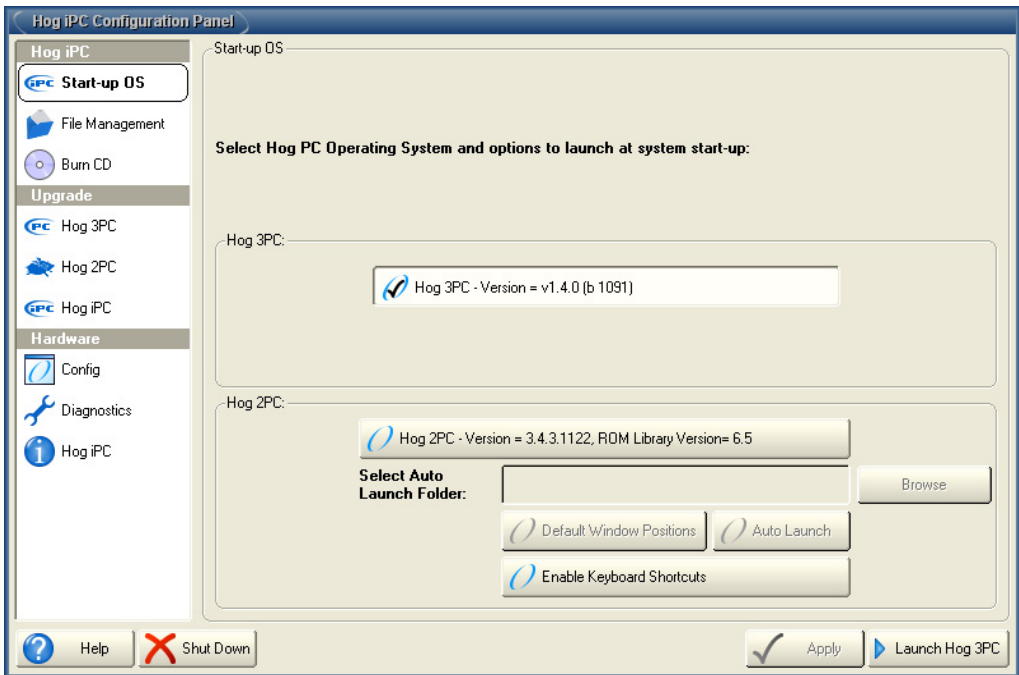
Configuration functions for **Hog iPC**, **Upgrade** and **Hardware** categories appear on the left side of the Hog iPC Configuration Panel.

There are also four command buttons along the bottom of the panel. **Help** accesses an online version of this document. **Shutdown** powers down the internal computer. **Apply** implements any configuration changes without exiting the Hog iPC Configuration Panel. **Launch Hog 3PC/Hog 2PC** implements any configuration changes and launches the selected Hog PC application version.

## Hog iPC Console Options

### Start-up OS

Selecting **Start-up OS** displays a screen with two sections labeled: Hog 3PC and Hog 2PC. Each section has a button that displays the version number of the Hog PC application currently installed. You can select either for operation on the Hog iPC console.



The button on the lower right hand corner of the Hog iPC Configuration Panel will change to say **Launch Hog 3PC** or **Launch Hog 2PC**. Press this button to apply the configuration changes and launch the application. The version selected in this panel will be retained as the Hog PC version to start the next time the console boots up.

### Hog 2PC Option: Window Positions

When the **Default Window Positions** button is checked (the factory default), it automatically positions the Hog 2PC screens in the Hog iPC monitors each time the Hog 2PC application is launched. To disable this function, click on the button to un-check it. Now the display windows will remain in the same position on the monitors as when the Hog 2PC software was last exited. For optimum use of Hog 2PC software on the Hog iPC console, leave this button checked.

### **Hog 2PC Option: Auto Launch**

A single click on the **Browse** button lets you locate a Hog 2PC show folder for Auto Launch. Once you select the file, it will appear in the **Select Auto Launch Folder** field and the **Auto Launch** button will show a check mark. Now the Hog 2PC application will automatically load the selected show at startup. A single click on the **Auto Launch** button clears the show selection and turns off the Auto Launch feature (the button will now appear without a check mark). Clicking the button again re-enables the feature and restores the last selected file for Auto Launch.

### **Hog 2PC Option: Enable Keyboard Shortcuts**

Click the Enable Keyboard Shortcuts button to enable all the Hog 2PC keyboard shortcuts.

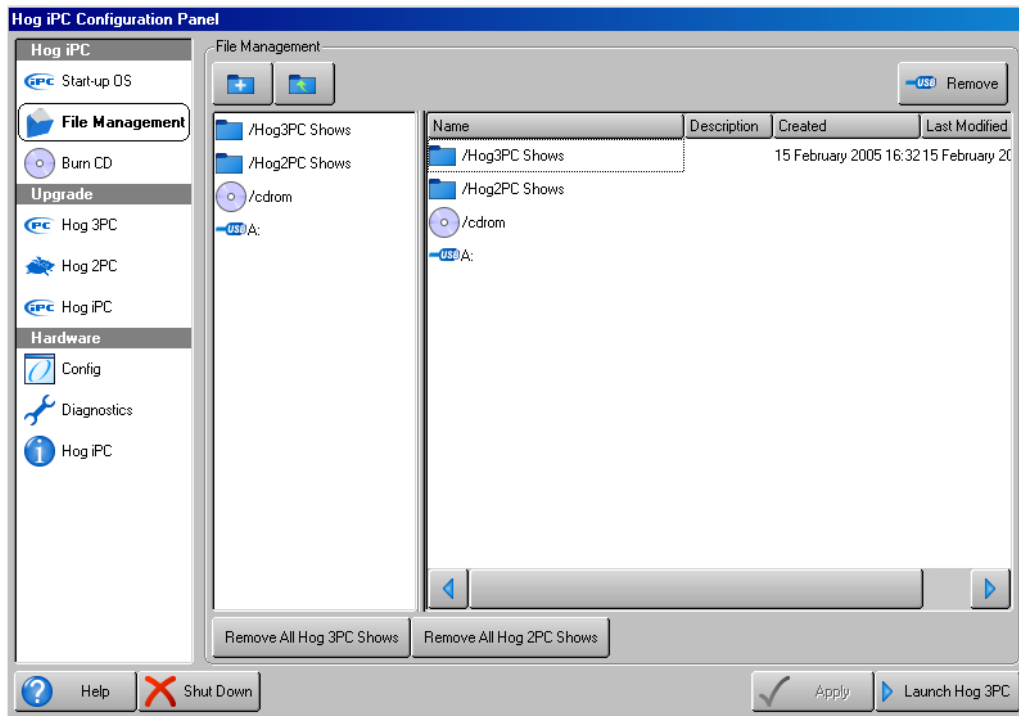
When this button is deselected (the factory default), the Hog 2PC keyboard shortcuts are disabled. This prevents accidental commands from an external keyboard. When disabled, only the following shortcuts are allowed:

- Q = Try Cue
- NumLock = Set
- F1 - F10 keys = window positions

## File Management


The File Management screen provides access to two folders on the local hard drive, the CD ROM drive, and any information on external drives attached to the Hog iPC console. The two default folders are:


- Hog 3PC Shows
- Hog 2PC Shows




**TIP:** Pressing once on a folder will open it — there is no need to double click.

Show files within each of these folders or drives are preceded by an icon identifying the application version used to create it. A description as well as creation and modification dates are displayed for each folder/file.

 = Hog 3PC Shows

 = Hog 2PC Shows

File management options let you create, copy, paste, custom name or delete Show folders.

Option	How to	Tips
Create New Show Folder	Click on the New Folder Button  OR Right Click and select <b>New Folder</b>	After naming or renaming a folder, you must press <b>Enter</b> on the keyboard. If you click within the window, the name or rename process will be canceled.
Renaming a Folder	Right Click on the folder and select <b>Rename</b>	
Delete a show	Right click on the folder and select <b>Delete</b>	There is no Undo option for file deletion.
Copying a show	Click and Drag the show folder to a new location. A copy will be made in the new location OR Right click and select <b>Copy</b> then right click in another location and select <b>Paste</b>	Note: Shows can not be moved, only copied.

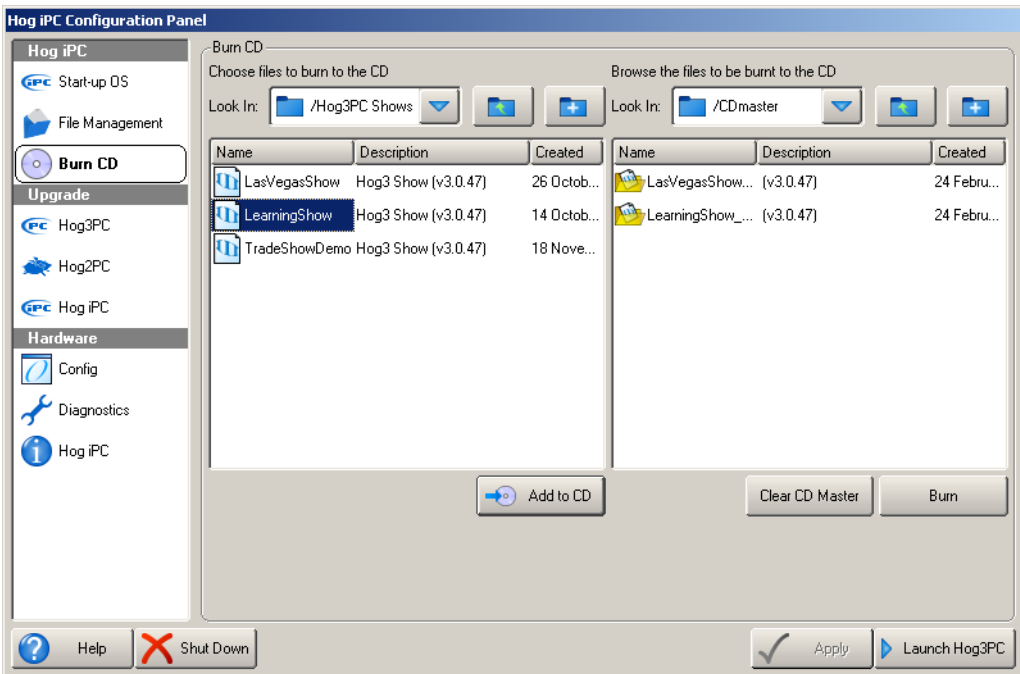
Additional buttons on the bottom of the tabbed section are labeled **Remove all Hog 3PC Shows** and **Remove All Hog 2PC Shows**. These buttons will permanently delete **ALL** show files by type from their respective folders on the internal hard drive. There is **NO** undo function for this action, but there is a confirmation dialog.

Press the **Remove USB** button at the top right corner of the window before removing any USB device attached to the Hog iPC. A confirmation dialog will indicate when it is safe to remove the USB device.

For more information on managing Hog 3PC and Hog 2PC show files, see *Working with Hog 3PC Show Files* on page 36, and *Working with Hog 2PC Show Files* on page 51.

## Burn CD

This screen allows you to select Show folders and burn them to a recordable CD.



You can select Show folders (and any sub folders) from the two system folders on the Hog iPC console or any connected external drives.

1. Navigate to the Folder that contains the show you wish to burn using the left-hand file list.
2. Select it and press **Add to CD**. Alternatively drag it into the right-hand CD Master list.
3. Repeat for all the shows you wish to copy to CD.
4. Insert a blank CD and select **Burn**.

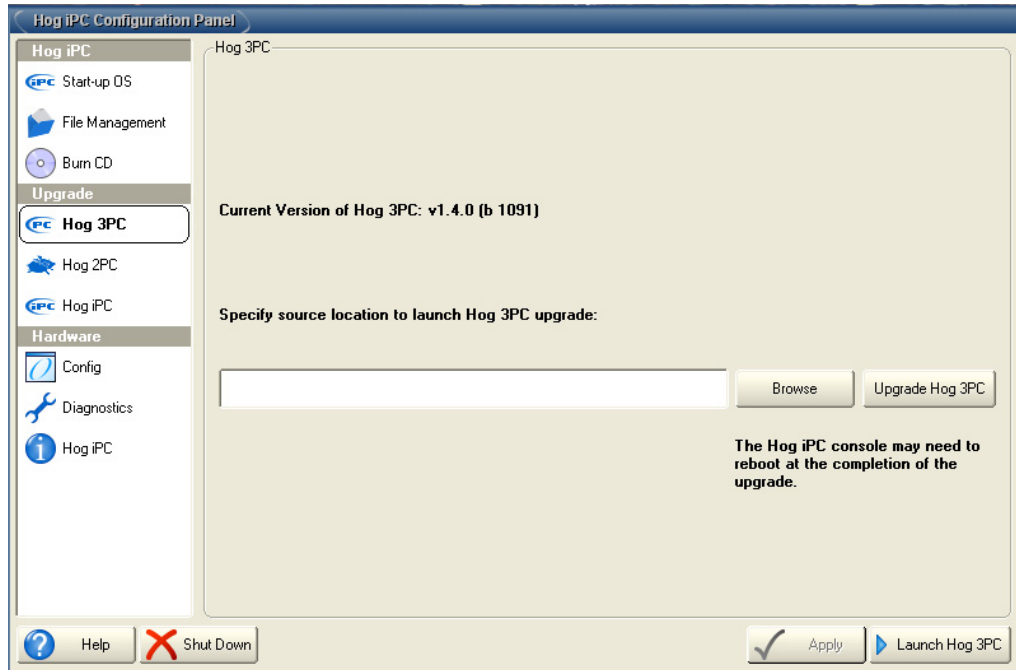
**Note:** *Hog 3PC show files will automatically be formatted into a backup file before being burnt to a CD.*

5. To cancel the Burn CD operation, or to make new selection for another CD-ROM, select **Clear CD Master**.



## Upgrade Options

The Hog iPC ships with the latest versions of Hog 3PC, Hog 2PC and the Hog iPC Configuration Panel software. As new versions become available, they can be downloaded from the High End Systems website.



Use the following steps to upgrade software on the Hog iPC console:

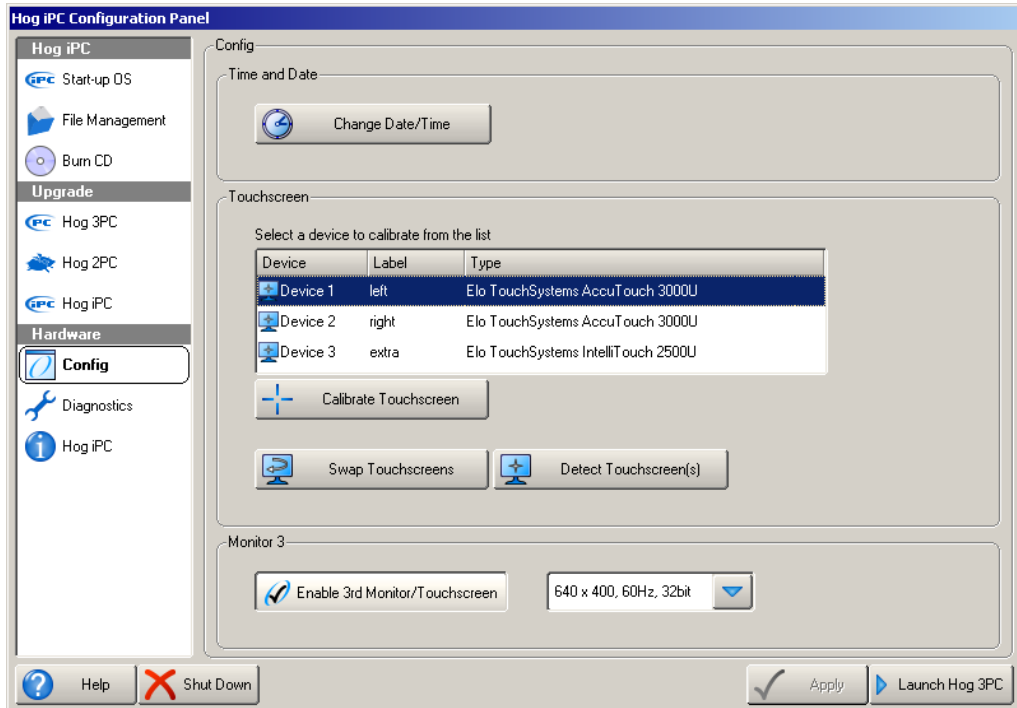
1. Using your computer, go to <http://www.flyingpig.com/support/hogipc/>
2. Choose the files you need; then download the files to your computer.
3. Unzip the downloaded file(s) and save the <name> .msi file(s) to a CD or external USB drive.
4. Insert the CD or connect the external USB drive with the downloaded .msi files to the Hog iPC console.
5. Touch the tab (Hog 3PC, Hog 2PC, Hog iPC) for the application you are upgrading and use the **Browse** field in the Upgrade screen to locate the file you have saved.
6. Once this file is in the location window, Touch the **Upgrade [Hog 3PC/Hog 2PC/Hog iPC]** button to start the upgrade. After the upgrade is complete the Hog iPC console MAY reboot.

**Notes:** *The Hog iPC console does not support any Hog 2PC versions prior to v3.4. If the wrong file type is selected, the upgrade process will be cancelled.*

## Hardware Options

### Hardware Configuration

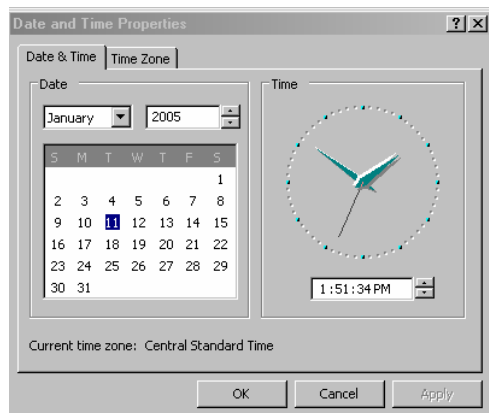
The Hog iPC console's hardware configuration options include setting the date and time, calibrating the touchscreen monitors, and enabling the optional third monitor.



### Setting Time and Date

Touching the **Change Date/Time** button opens the standard Windows Time and Date dialog box to set the time, date, and time zone as well as daylight savings options.

After making needed adjustment, press **OK** to save. You have the option to **Cancel** your changes at any time.

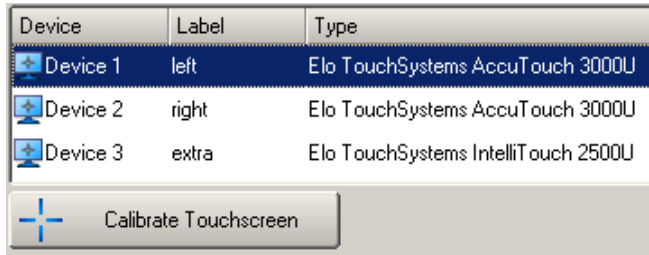


## Touchscreen Options

### Calibrating Touchscreens

To calibrate a touchscreen, first select a device from the selection box. Press the **Calibrate Touchscreen** button.

A white screen with directions to touch a cross at each corner of the screen will appear. After the first touchscreen calibration is completed the calibration screen will close. The calibration will terminate if no touch is received on the screen within 10 seconds. You can also right click on a device in the selection box and select **Calibrate** to begin the calibration routine.



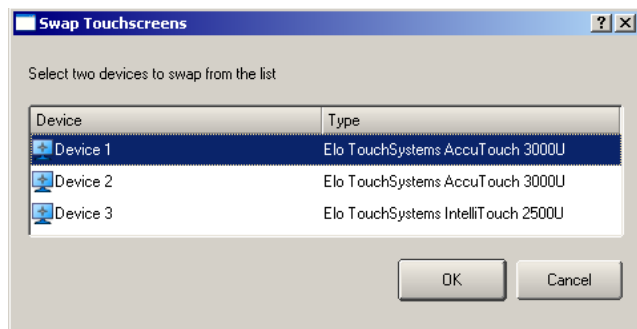
The touchscreen device selection box contains a field called **Label** you may click in this cell and enter a description of the monitor if desired. For example after calibrating and discovering which device mapped to the left monitor, you may want to enter *Left monitor* in this field for future reference. The default monitors shipped from the factory with the console are pre-labeled accordingly.

**Note:** *This is the only calibration routine intended for use with the Hog iPC touchscreens. Other Touchscreen Calibration commands within the Hog 2PC application do not function with the Hog iPC console's touchscreens.*

### Swapping Touchscreens

The Swap Touchscreens option lets you switch the touch response to the another touchscreen. When you press **Swap Touchscreens** button a dialog box will appear listing the attached touchscreen devices.

The first two devices listed are the Hog iPC console touchscreens. The third device is an optional monitor. Select whichever two you wish to swap and press OK.



### Detecting Touchscreens

In the event of replacing a touchscreen or adding a new touchscreen, the device will need to be detected. Press the **Detect Touchscreens** button to detect any new touchscreen devices. Any newly detected devices will need to be calibrated (and optionally labeled) in the above manner.

You can remove, or disable, the monitor's touch functionality by right clicking on the device in the touchscreen device selection box and selecting **Remove**. The touch functions of the associated touchscreen will cease operation until the touchscreen is detected again using the **Detect Touchscreens** button.

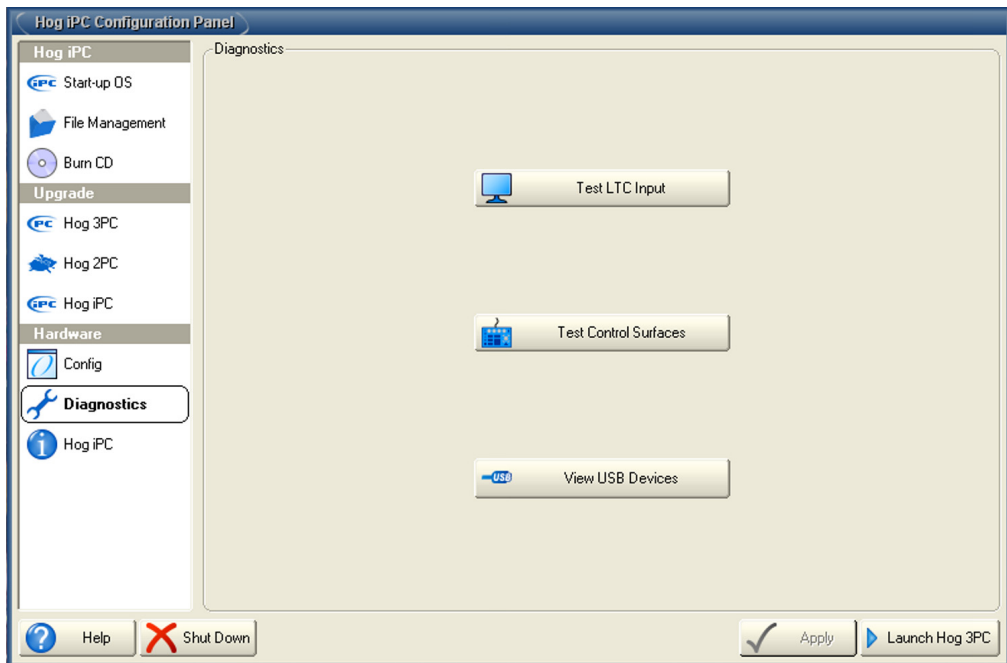
### Monitor 3

Press the **3rd monitor** button to enable an optional DVI or VGA touchscreen or monitor connected to the DVI port on the back of the console. Select a resolution for the external monitor from the list to the right of this button. If an Aspen or ELO touchscreen is attached to the DVI port and its USB is connected, then it will appear in the touchscreen box as device 3. When a 3rd monitor is enabled in the Hog iPC Configuration Panel for use with Hog 3PC, no further configuration is required within Hog 3PC.

**Note:** *When using the 3rd monitor with Hog 2PC, it is suggested that you disable the default positions button in the Start-Up OS tab of the Hog iPC Configuration Panel prior to launching Hog 2PC.*

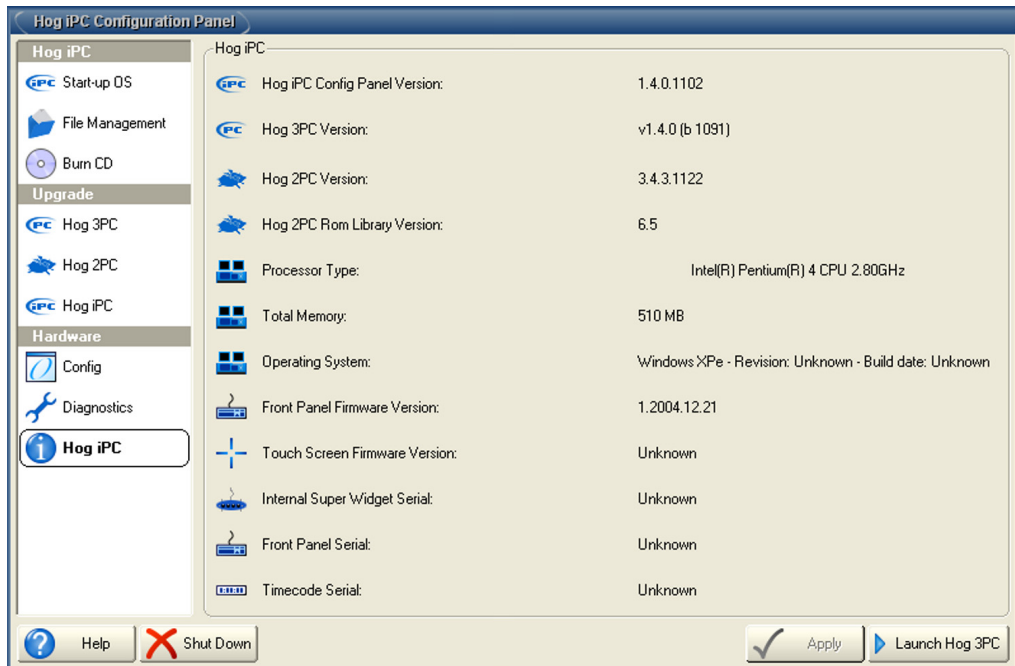
## Hardware Diagnostics

Selecting the Diagnostics tab opens a screen with buttons to access diagnostic displays for several functional categories. These tests are primarily for use by authorized HES technicians. For further details email [support@flyingpig.com](mailto:support@flyingpig.com).



## Hog iPC Information

This tabbed section displays current system information. Software Version numbers for Hog 3PC, Hog 2PC, and the Hog iPC Configuration Panel are all displayed. In addition, you can find information about the installed PC and Windows XPe operating systems.



**Note:** You will need the information on this screen whenever contacting High End Systems for support.






## Aspen Monitor Controls

A screen resolution of 800 x 600 at 60-75 Hz is factory set on each touchscreen for optimum performance with the Hog iPC console. No other resolutions are supported on the Hog iPC console.

Set other monitor controls in the **On-Screen Display** (OSD) menu. All adjustments you make to the controls are saved in monitor's RAM to avoid having to reset them every time the touchscreen monitor is shutdown. A restore factory setup option is available in the OSD.

### Monitor Control Buttons

The following table shows the OSD and Power control buttons, located on the right side of the display, and both the Normal and Direct Access functions of these buttons. The Direct Access features can be used by pushing the corresponding button without entering the OSD Menu first. For example, you may access the Display Brightness feature through Direct Access by simply pushing the Up button.

Symbol	Button Name	Normal Function	Direct Access
	Menu	Displays/Exits OSD Menu	
	Up	Increases selected item value	Display brightness
	Down	Decreases selected item value	Audio ON/OFF
	Enter	Selects highlighted menu item	Video auto adjust
	Power	Turns all display power ON/OFF	























### Display Setup

Use the OSD buttons to set up the display:

1. Turn on the display with the POWER button. Both the power adapter and the display have power indicator lights. The power indicator light on the power adapter will illuminate when AC power is applied to the adapter. The power indicator light on the display will illuminate when the display is turned on with the POWER button.
2. The display will initially be set to properly display the native resolutions the LCD panel, which is 800 x 600 pixels.
3. Press the ENTER button on the OSD controls. A pop-up window on the display should appear with the message "Auto Adjusting Please Wait."
4. Inspect the top, bottom, left and right edges of a typical application to make sure you can see the intermediate on the display without scrolling. If so, you are finished with the basic setup of the display.

## OSD Menu and Function

The complete OSD Menu is shown in the table below. The Main Menu icon for each menu group is shaded, and the individual functions within the group follow. To access the OSD Menu, push the MENU button. Use the ENTER button to select a highlighted menu, and to move between individual items within a menu. Use the UP/DOWN buttons to select/deselect an item, or to increase/decrease the value of an item.

	<b>Contrast and Brightness</b>	
	Contrast	Controls the display contrast.
	Brightness	Controls the display brightness.
	<b>Video Adjustment</b>	
	Auto Adjust	Automatically sets display image size, position, and fine adjustment. Contrast and brightness are not adjusted.
	Left/Right	Controls horizontal position.
	Up/Down	Controls vertical position.
	Horizontal Size	Increases or decreases the horizontal size of the image.
	Fine	Controls the vertical fine adjustment. May improve picture detail in emulation modes.
	<b>OSD Tool</b>	
	OSD Left/Right	Adjusts the default horizontal position of the OSD on the display.
	OSD Up/Down	Adjusts the default vertical position of the OSD on the display.
	OSD Timeout	Determines time (in seconds) that OSD waits before automatically closing after no action has been performed.
	Factory Reset	Recalls original factory settings of image parameters.
	OSD Language	Selects the OSD menu language—English, French, German, Italian, Spanish, Japanese, Traditional Chinese, or Simplified Chinese.
	<b>Color Adjustment</b>	
		Adjusts preset <i>color temperature</i> of the image. Available choices are 9300, 7500, 6500, and 5500° <i>Kelvin (K)</i> . A User mode allows custom setup of each color component of the image—Red, Green and Blue. Default setup for this parameter is 6500°K. Do not adjust color temperature unless you have a specific need to do so.
	<b>Audio Adjustment</b>	
	Volume	Adjusts the loudspeaker volume.
	Mute ON/OFF	Mute ON turns off the audio function. Mute OFF restores the audio function.
	<b>Auto DIM</b>	
	Auto Dim	Turns the Auto-Sensing Brightness Adjustment circuit ON or OFF.
	Dimming Range	Menu shows sensed light level, and brightness setting as a percentage of full scale (same setting as Brightness in Contrast and Brightness menu when Auto DIM is OFF). With Auto DIM ON, brightness is now controlled by the light sensor located at top center of the front bezel. See additional discussion of the Auto-Sensing Brightness Adjustment feature further in this section.

## ELO Monitor Controls

---

A screen resolution of 800 x 600 at 60-75 Hz is factory set on each touchscreen for optimum performance with the Hog iPC console. No other resolutions are supported on the Hog iPC console.

Set other monitor controls in the **On-Screen Display** (OSD) menu. All adjustments you make to the controls are saved in monitor's RAM to avoid having to reset them every time the touchscreen monitor is shutdown. A restore factory setup option is available in the OSD.

### Monitor Control Buttons

Buttons on the side of the monitor include the power switch and OSD menu control buttons.

#### Monitor Control Buttons



The **MENU** button displays and exits the OSD menu.



The **UP** arrow button scrolls clockwise through the menu options and, after **SELECT** is pressed, increases the value of the selected OSD control option.



The **DOWN** arrow button scrolls counterclockwise through the menu options and, after **SELECT** is pressed, decreases the value of the selected OSD control option.



The **SELECT** button chooses an option for adjustment, then, when pressed again, saves the selected value.



The **POWER** button turns the monitor on or off.

### Lock and Unlock Options

Touchscreen monitors ship with the OSD in the unlocked mode and the Power functions in the locked mode. Locking a function is a way to avoid inadvertently toggling it on or off.

To lock the OSD:

1. Press the **MENU** button and the **UP** button simultaneously for 2 seconds. A screen will appear displaying **OSD Unlock**.
2. Continue to hold the buttons down for another 2 seconds and the window toggles to **OSD Lock**.

The power functions are assigned to the locked mode from the factory to simplify the startup process. To unlock the power functions:

1. Press the **MENU** button and the **DOWN** button simultaneously for 2 seconds. A window will appear displaying Power Lock.
2. Continue holding the buttons down for another 2 seconds and the window toggles to **Power Unlock**.



## Setting Monitor Controls in the OSD Menu System

To navigate to a OSD option

1. Press the **MENU** button to display the OSD Menu.
2. Press the **UP** button or the **DOWN** button to navigate to a OSD control option.
3. When the function you want to change is displayed, press the **SELECT** button.

To adjust the Value of the function:

1. Pressing the **UP** button increases the value of the selected OSD control option.
2. Pressing the **DOWN** button decreases the value of the selected OSD control option.
3. After adjusting the values, press the **SELECT** button again and the monitor will automatically save the changes.

**Note:** *The OSD screen will disappear if no input activities are detected for 10 seconds.*

## OSD Control Options

<b>Contrast</b>	adjusts the contrast or the values of color gain (RED, GREEN or BLUE).
<b>Brightness</b>	adjusts the background Luminance of the LCD panel
<b>V-Position</b>	adjusts the display window vertically on the screen
<b>H-Position</b>	adjusts the display window horizontally on the screen
<b>Recall Defaults</b>	resets the factory OSD default settings.
<b>RGB</b>	selects Color Temperature and sets R, G, B gain.
<b>Volume</b>	(not used)
<b>YUV</b>	adjusts the color intensity and tint
<b>Phase</b>	(not used)
<b>Clock</b>	(not used)
<b>OSD H-Position</b>	positions the OSD menu screen horizontally in the monitor display
<b>OSD V-Position</b>	positions the OSD menu screen vertically in the monitor display
<b>OSD Timeout</b>	adjusts the amount of time in which the OSD will disappear
<b>Auto Adjust</b>	automatically refreshes the screen and exits the OSD
<b>Language</b>	chooses between English, French, German, Spanish and Japanese for the OSD
<b>Info</b>	displays the current monitor resolution and refresh rate

## Monitor Display Angle

For viewing clarity, you can tilt the LCD forward (up to -5 degrees) or backward (up to 60 degrees.)



# **Using Hog<sup>®</sup> 3PC Software**



---

## Differences Between Hog iPC and Wholehog 3 Consoles

---

The Hog iPC is optimized to operate with the Hog 3PC application. You can find information on programming and operation details in the Wholehog 3 User Manual you received with the Hog iPC console.

**Note:** *You can also access several language versions of the Wholehog 3 User Manual through the Hog 3PC application Help menu.*

Hog 3PC Show files are completely compatible with show files programmed on any Wholehog 3 operating system console, but NOT compatible with Wholehog 2 operating systems (such as Hog 2PC).

Although the front panel of the Hog iPC console is very similar to the Wholehog 3 console, the capabilities vary in some specific ways.

### Networking

While the Hog 3PC software can connect to a Wholehog 3 show on a network, it can not connect directly to a DMX Processor (DP) or MIDI/Timecode processor (IOP). Refer to section 12 of the *Wholehog 3 User Manual* for Wholehog 3 network configuration that allows connection to other Wholehog 3 shows.

### Patching

Instead of the Wholehog 3 console's direct Ethernet connection to Wholehog 3 DMX processors, Hog 3PC software uses two "virtual" DPs when patching and DMX output is then accomplished via the internal DMX outputs and external USB DMX Widgets or Super Widget.

The Hog iPC console's four internal DMX outputs are pre-configured within the Hog 3PC application. Each of the four outputs is mapped to the first four DMX outputs of DP #1 within the Wholehog 3 operating system. Any external USB Widgets or Super Widget can be mapped to DP #2 using the Widgets tab of the Hog 3PC Control Panel. Refer to the Wholehog 3 user manual for details on patching fixtures to DPs for DMX output.

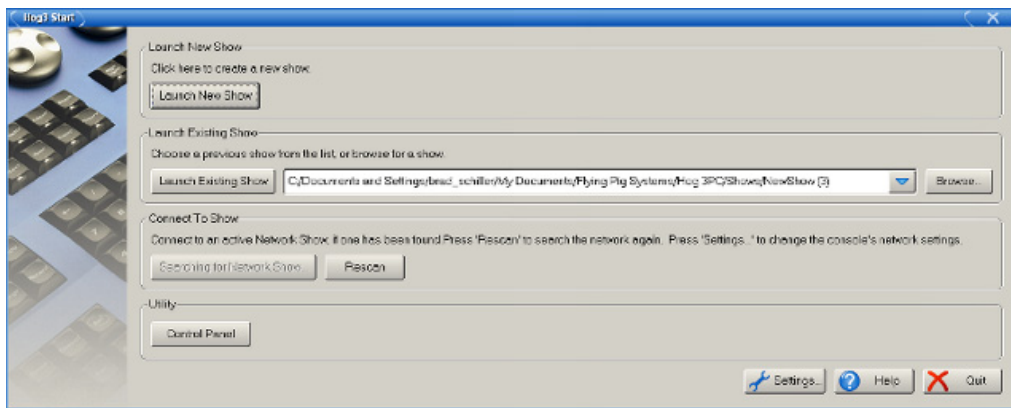
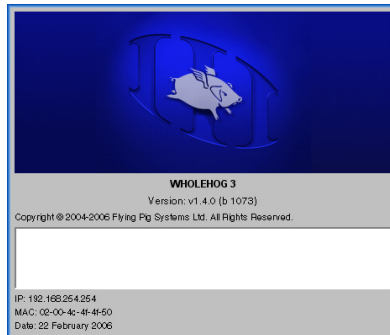
### Trackball Preferences

Changes made to the pointer mode for the trackball in the Preferences window regarding the bottom two buttons will be ignored. They will always behave as left and right click options when in pointer mode. These buttons can still be modified when in ball mode.

## Launching Hog 3PC

The Hog iPC Configuration Panel allows you to assign the Hog iPC console to launch the Hog 3PC application, see *Start-up OS* on page 18. The Splash Screen and the Hog3 Start window will open.

In the Hog3 Start window, you can choose to Launch New Show, Launch Existing Show, or Connect to Show.



## Working with Hog 3PC Show Files

### Creating

All Hog 3PC shows stored on the Hog iPC computer are stored in the **Hog 3PC shows** folder. You can create new sub-folders using the Hog iPC Configuration Panel's File Management tab or within the Hog 3PC's new show window.

### Transferring

A Wholehog 3 show file is actually a folder containing several subfolders and files. Within the Hog 3PC application and the Hog iPC Configuration Panel, this show folder is displayed as a single Wholehog 3 show file with a Wholehog 3 icon.

	Name	Description	Created
/Hog3PC Shows			
/Hog2PC Shows			
/cdrom			
	LasVegasShow	Hog3 Show (v3.0.47)	26 October 2004 17...
	LearningShow	Hog3 Show (v3.0.47)	14 October 2004 15...

If you copy this file to an external drive, you will be able to access the subfolders and files that make up your show.



**CAUTION: Altering or changing the hierarchy of any of the files within a Show file folder will corrupt the show file.**

## Backing Up

To prevent problems when transferring a Wholehog 3 show file from a Hog iPC console to another Hog 3PC system or Wholehog 3 console, always create a backup of the show file using the Wholehog 3 backup procedure. This backup procedure creates a single compressed file that contains all the subfolders and files integral to your Hog3 show file.

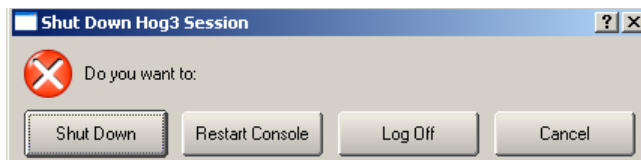
To create a backup of your show file, within the Hog 3PC application, use the File Browser pane of the Show Manager window to store a backup of your current show to another location on the hard disk or an external USB drive:

1. Select the **Setup** key on the console, then the **Shows** button on the interface, and then **Current Show**
2. Press **Backup**.
3. Browse to it's location on the hard drive and click your show file folder to select it. You can change the name of the show file folder at this point if you wish.
4. Press **OK**. A copy of your show will be saved with **\_bckf** appended to its file name.

The backup file can then be burned to CD or copied to an external drive using the Hog iPC Configuration Panel and transferred to another Hog 3PC system or Wholehog 3 console with no concerns about corruption of the show file. The backup file is also useful should you need to send a show file via email.

## Exiting Hog 3PC

To exit Hog 3PC, press **Setup** then **Quit**. The following dialog will appear:



- **Shut Down** shutdowns the Hog iPC console.
- **Restart Console** reboots the Hog iPC console.
- **Log Off** exits the current show and returns to the Hog 3PC start screen.
- **Cancel** cancels the exit procedure

**Note:** *If you select **Quit** from the Hog 3PC start screen you can return to the Hog iPC Configuration Panel*

## Configuring External USB DMX Widgets with Hog 3PC

The Hog iPC console running Hog 3PC software can support up to eight universes. Four are internal to the console. You can connect up to four external USB DMX widgets (one universe each) or one USB DMX Super Widget (four universes) to add additional universes.

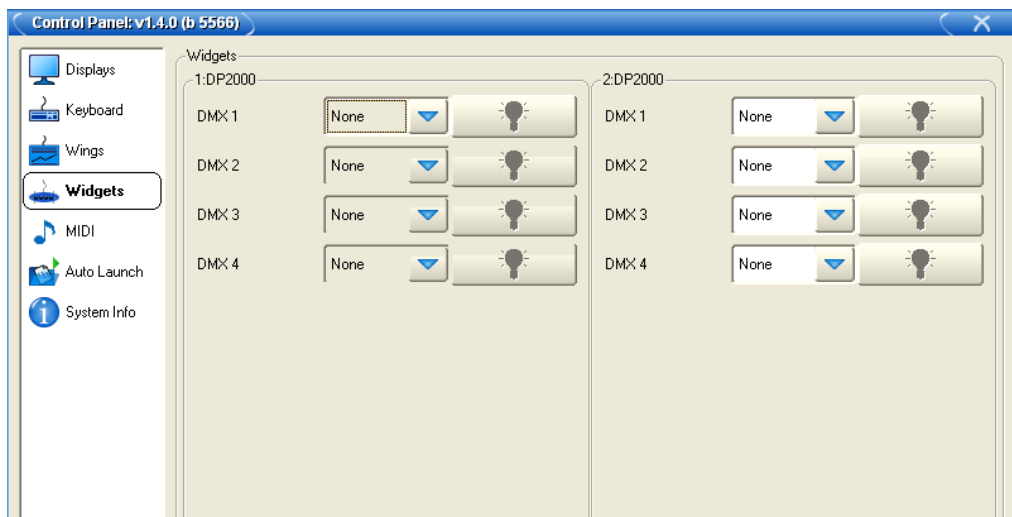
Before you begin configuring connected widgets, ensure that an USB DMX Widget or Super Widget is connected to an USB port of the computer. The "link" indicator on the widget should be illuminated and it will blink every 2 seconds to indicate that it is functioning correctly.

Use the following steps to configure the widgets:

1. Within the Hog 3PC application, select the **Setup** key on the Front Panel and then the **Control Panel** button on the main toolbar to open the Control Panel.

**Note:** *You can also access the Control Panel from the Utility section of the Hog3 Start window.*

2. Select the **Widgets** tab. The Hog 3PC application provides one port for each of the DMX outputs on the first two DPs in the show file.



3. To configure a widget to an output port of a DP, click on the box associated with the port and select the widget from the list of serial numbers that appears. Super Widget ports will appear with the serial number followed by an output number.

A single widget or single output of a Super Widget may only be connected to one port at any one time. If a widget that is already connected to one port is connected to a second port, it will automatically be disconnected from the first port.

**Note:** *Some widget serial numbers will appear with RED text. This indicates that the USB DMX Widget is not compatible with Hog 3PC and must be enabled. Please contact HES for upgrade information.*



4. Click **Apply** or **OK** to confirm the selection. The widgets that have been connected should now have their "Active" "DMX OK" and "TX Mode" indicators illuminated.
5. You can identify which widget is connected to the port by selecting the Beacon button to the right of the port. The widget connected to that port will flash its indicator lights for a few seconds.

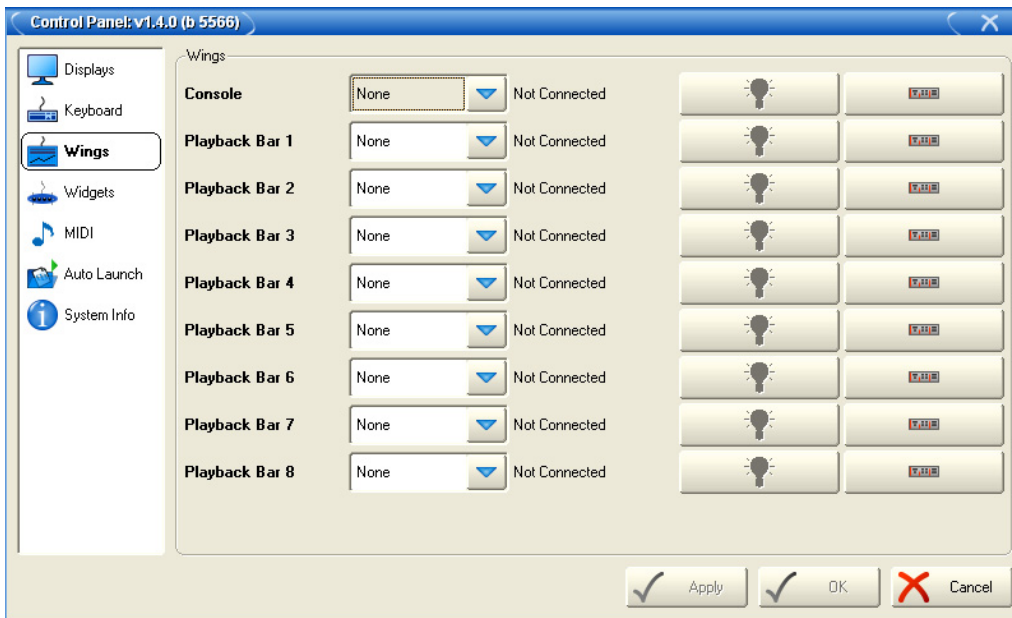
## USB Playback Wings

You can increase the number of physical Masters by adding up to four mini USB Playback Wings to the console. Configuration is very similar to that of the USB DMX Widgets.

Before you begin configuring connected playback wings, ensure that an USB Playback wing is connected to an USB port of the console. The "link" indicator on the wing should be illuminated and it will blink every 2 seconds to indicate that it is functioning correctly.

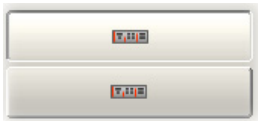
Use the following steps to configure the wings:

1. Select the **Setup** key on the Front Panel and then the **Control Panel** button on the interface to open the Control Panel.
2. Select the **Wings** tab. The Hog 3PC application provides one port for each of the possible playback bars.



3. To configure a wing to a playback bar, click on the box associated with the playback bar and select the wing from the list of serial numbers that appears. Wholehog 3 Expansion Wings will appear with their serial number followed by a display number.

Once properly configured, the wing status will change to display "connected" and the beacon icon will become enabled. The Beacon button flashes the Wing's LEDs to identify its connection port.



The **Display** button will toggle the graphical playback bar on or off. Each playback bar can be displayed regardless of hardware configuration. This can be useful when working offline.

## MIDI and Linear Timecode

---

The Hog iPC console contains a SMPTE input as well as MIDI in/out/thru. MIDI and SMPTE are both automatically configured with the Hog iPC hardware. See the Wholehog 3 User Manual for information on how to activate these features within the Wholehog 3 operating system.

### Timecode input

The Hog iPC console only supports one input of timecode in either a SMPTE or MIDI format. Other timecode formats may be available within the Wholehog 3 operating system but do not function with the Hog iPC console.

### MIDI

You can observe MIDI IN and MIDI OUT activity on the top two LEDs on the console's back panel. The LEDs will flash to indicate each time a MIDI message is sent or received. MIDI functionality within the Hog iPC console is the same as in the Wholehog 3 operating system.

## Networking with Wholehog 3 shows

---

The Hog 3PC application is capable of connecting as a client to other Wholehog 3 operating system shows via an Ethernet network. Additionally the Hog 3PC application can act as a server and allow other Wholehog 3 operating systems to connect to it as clients via Ethernet. Even though Hog 3PC cannot connect directly to a DP or an IOP, it can connect as a client to a show running on a Wholehog 3 console, that, in turn, is connected to DPs and IOPs. Refer to section 12 of the *Wholehog 3 User Manual* for Wholehog 3 network configuration that allows connection to other Wholehog 3 shows.

# **Using Hog<sup>®</sup> 2PC Software**



## Hog 2PC Backwards Compatibility

In addition to operating optimally with Hog 3PC software, the Hog iPC console is backwards compatible with the classic Hog 2PC application. When combined with the Hog iPC console's internal hardware, the Hog 2PC application provides four universes of DMX output (expandable to seven), one SMPTE input, and MIDI in/out/thru capabilities. Please note the following Hog 3PC software advancements will **NOT** be available when running the Hog 2PC application on the Hog iPC console:

### New Fixture Capability

- Fixtures share parameter labels and programming functionalities
- Real World Values
- Quick fixture additions to existing show
- Simple fixture type replacement
- Patch information cloning by universe

### More Playback Functionality

- Flexible cuelist timing
- Scenes allow direct access and playback of single looks
- Better custom playback control
- Virtual master playback controls
- Inhibitive group submasters
- Unlimited active playbacks across pages
- Improved trigger Macros
- Tap Sync feature for chase timing
- Dedicated "Live" key with 'Touch' and 'Suck' buttons
- Dedicated Assert key
- Improved "priority" assignments for cuelists
- Latchable flash buttons

### Added Connectivity

- Network the same show on multiple consoles, Hog iPC, and/or Hog 3PC computers
- Multiple Playback Wings
- Multiple expansion wings
- ESP Vision and WYSIWYG direct connect via Ethernet

### Enhanced Programming

- Consistent function syntax
- Multiple open editors
- Quick cue changes
- *Track backwards* cue changes
- Enhanced record options toolbar
- Global palettes
- Slots toolbar
- Customized parameter ordering on encoder wheels
- Color Picker for visible color mixing selections
- Quick reference to major gel colors
- Hue and Saturation parameters
- Remote focus using Hog 3PC software
- Powerful fanning abilities at various start points
- Dedicated Fan Key
- Parameter max/min values Quick key
- Gobo rotation Quick key
- Custom 'Lowlight' palette
- Back key for previous fixture selection
- Multi-level undo/redo

### Show Data Utilities

- Timed Auto backup
- Show maintenance utilities

### Better Timing Control

- Cuelist timecode enabling
- Timecode or internal audio CD cuelist triggering
- Realtime Time and Date display and show stamping

### User Interface

- Import and export user preferences between shows or consoles
- Enhanced user and console configuration options
- Editable spreadsheet displays
- Dockable toolbars for easy console customization
- Compact editor modes allow more on-screen information
- Editable Aggregation of display information
- Copy and paste in spreadsheet views
- Additive and non additive views
- Parked Output Window
- Control key and control toolbar for fixture commands
- Quick scroll functions for windows
- Custom resizing of windows
- Spreadsheet custom column ordering
- Customizable default naming schemes
- Unlimited number of views
- Online help / manual
- English, German and Japanese user manuals

### Ongoing Development

- Dedicated development team continually enhancing software
- Internal Testing Department ensuring new release stability

The following sections provide information regarding operating Hog 2PC software on a Hog iPC console.

**Note:** *For Wholehog 2 software operation instructions, download the Wholehog 2 User Manual from the High End Systems website at <http://www.flyingpig.com/support/hog2/manuals/>*

## Differences Between Hog iPC and Wholehog 2 Consoles

---

Although the Hog 2PC application uses the common Wholehog 2 Operating System found on the Wholehog 2 console, the Hog 1000 console, and the Hog 500 console, it does not share all the same capabilities as a full Wholehog 2 console. Show files are completely compatible with any Wholehog 2 operating system console, but NOT compatible with Wholehog 3 operating systems (such as Hog 3PC).

### Functional Differences

The following common Wholehog 2 console accessories and capabilities are NOT available when using the Hog 2PC application on the Hog iPC console:

- Wholehog 2 Overdrive boxes (functionality is supported with external USB DMX widgets)
- Wholehog 2 Expansion Wing (limited functionality is supported with one additional USB Playback Wing)
- Wholehog 2 remote
- DMX Input
- MIDI Notes output (MIDI Notes input and MIDI Show Control input and output is supported)

### Frontpanel Component Differences

Because the Hog iPC console is designed for use with Hog 3PC, there are several programming and playback Frontpanel differences when running Hog 2PC on the Hog iPC console.

#### Encoder Wheels

- The first three encoders correspond to the Wholehog 2 encoders, and perform a similar function.
- The fourth encoder is a dedicated scrolling wheel, performing the same function as holding the Setup button and turning the first encoder wheel.

#### Trackball

- The trackball can operate either in mouse mode, or in pan & tilt mode.
- To toggle between trackball modes, click the top right trackball button. The current mode is indicated by the blue backlight, that will be OFF when in mouse mode and ON when in pan & tilt mode. Note the trackball mode is independent of the 'Trackball does Pan/Tilt' option in the Hog 2PC control panel.

- In **mouse mode**, the trackball controls the main Windows cursor. The two lower trackball buttons are used to left and right click.
- In **pan & tilt mode**, the trackball controls the pan and tilt of any fixtures currently selected in the programmer. The two lower trackball buttons act as 'Next Fixture' and 'Previous Fixture' when in this mode. The pan & tilt sensitivity can be adjusted by changing the 'trackball sensitivity' value in the Hog 2PC Control Panel.
- The top left trackball button has no function in Hog 2PC.

### Key Functionality

- The majority of the keys on the Hog iPC console perform the same function as Hog 2PC, with the exceptions shown in the table to the right.
- Hog 2PC does not support the following keys on the Hog iPC console:
  - Scene
  - Merge
  - Fixture
- The Assert key is supported with Hog 2PC, and operates as follows:
  - Press assert (on its own) to assert the currently chosen master.
  - Hold a choose key and press assert to assert that master without choosing it.

Hog iPC Console	Hog 2PC
Back	Pig + Next
Control	Undo
Intens	Group
Live	Active
Open	Load
Positn	Focus

### Playback Faders

The Hog iPC console's faders are arranged in the same order as the Hog 2PC on-screen Frontpanel:

- The first fader is the grand master and its buttons have no function.
- The GM button on the far left of the Frontpanel acts as the DBO.
- The eight faders in the middle are the 8 playback masters. Their Choose, Go, Stop and Flash buttons are all supported.
- The last fader is the manual crossfader. Its associated buttons have no function.
- The controls for an external USB Playback Wing operate in a similar manner to the middle eight playback faders on the Hog iPC console.

## Launching Hog 2PC

The Hog iPC Configuration Panel allows you to set the Hog iPC console to launch the Hog 2PC application, see *Start-up OS* on page 18. The following launch screen will appear when the Hog 2PC application opens.



The Hog 2PC launch screen lets you locate existing Hog 2PC show folders or create a new one. Use the folder viewer on the left to browse to a folder that contains an existing show, or create a new folder to start a new show. Folders containing an existing show are shown in bold text.

The software will request that you have a folder before starting a show. Right-click in the **Show Folder** window to rename a folder or create a new folder.

When you click the **OK** button, the Frontpanel and Touchpanel windows will open.

**Note:** *It is possible to bypass the startup dialog and autolaunch a Hog 2PC show. See the Hog iPC Configuration Panel Start-up OS on page 18.*

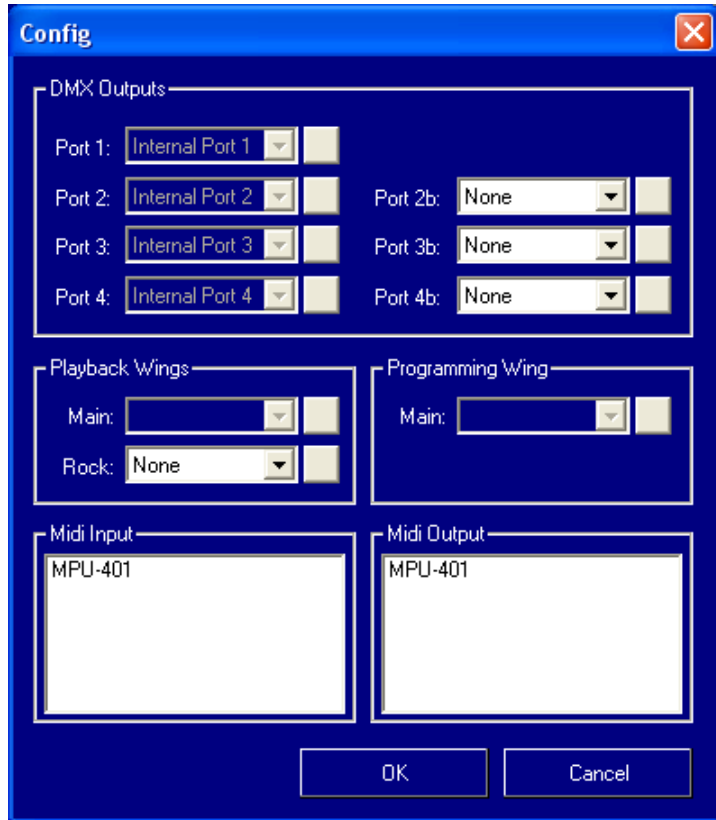


## Configuring External USB DMX Widgets with Hog 2PC

The Hog iPC console's four internal DMX outputs are pre-configured within Hog 2PC. Each of the four outputs are mapped to the first four DMX outputs of the Wholehog 2 operating system. Refer to the Wholehog 2 user manual for details on patching fixtures to these DMX outputs.

Use the following steps to install and configure USB DMX Widgets:

1. Connect the USB DMX Widget or Super Widget to a USB port of the Hog iPC console. The "Link" indicator on the widget should be illuminated and it will blink every two seconds to indicate that it is functioning correctly.
2. Right click over the Frontpanel window and select the "Config..." option from the popup menu that appears. The top section of the Config window is used to configure USB DMX widgets to the outputs



**Configuring USB Devices**

of the Hog 2PC application. The Hog 2PC application provides one port for each of the DMX outputs that a Wholehog 2 console supports when fully 'overdriven'.

The first four ports are already assigned to the internal outputs of the Hog iPC console and can not be reconfigured. They appear "greyed-out" in the Config window. Widgets can be configured on Ports 2b, 3b and 4b.

3. Left click on the box associated with the port and select the widget from the list of serial numbers that appears. A widget may only be connected to only one port at any one time. If a widget that is already connected to one port is connected to a second port, it will automatically be disconnected from the first port.

**Note:** *A USB DMX SuperWidget will display its serial number followed by an output number (SN/1, SN/2, SN/3, or SN/4). You can assign any output of a Super Widget to any available DMX port.*

The small button on the right hand side of each port field helps you identify which widget is connected to it. When you press that button for a port, the connected widget flashes its indicator LEDs for a few seconds.

4. Click on OK to confirm the selection. The widgets that have been connected should now have their "Active", "DMX OK", and "TX Mode" indicators illuminated.

## Configuring USB Playback Wings with Hog 2PC

---

The Hog iPC console itself acts as the first Playback Wing that Hog 2PC software controls and is auto-enabled. It provides 8 playback masters, a grand master, and a manual crossfader. A second USB Playback Wing can be added to provide an additional 10 playback masters.

You must configure Hog 2PC to use the second Playback Wing by selecting its serial number in the config dialog, in a similar manner to configuring USB DMX Widgets.

1. After Connecting the Playback Wing to a USB port on the back panel of the Hog iPC console, right click over the Hog 2PC Frontpanel window and select the "Config..." option from the popup menu that appears.

The "main" port is already assigned to the Hog iPC console and can not be reconfigured. The external Playback Wing is configured using the "Rock" port.

2. Left click on the box associated with the Rock port and select the serial number that appears.
3. Click on OK to confirm the selection.

The controls on the external "Rock" Playback Wing operate in a similar manner to those on the Hog iPC console except that all ten faders are used as playback masters, giving a total of 18 playback masters.

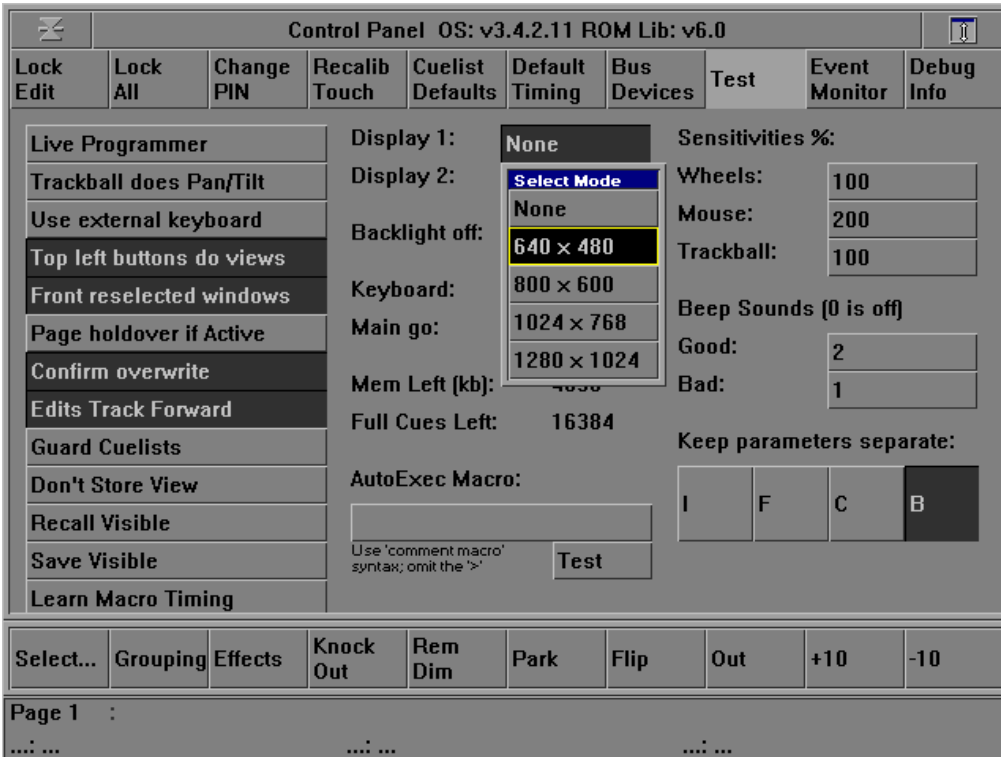
When using a second Playback Wing as a "Rock" wing, a second playback status bar will be displayed at the bottom of the third touchscreen window. (To display this window in Hog 2PC, select **Setup** → **Control Panel** and then select a resolution of 640 x 480 for **Display 1**.)

Clicking on either of the playback bars will 'choose' that master. This is a convenient way of checking which playback bar references which set of masters.

## Using an Optional 3rd Monitor with Hog 2PC

When using Hog 2PC software, simply drag any desired windows over to the 3rd monitor. To open additional Hog 2PC windows within the Hog 2PC application:

1. Press **Setup**, then **Control Panel**.
2. In the middle of the Control Panel locate the **Display 1** and **Display 2** fields. Clicking either field will bring up a Select Mode popup list with available resolutions.



3. Select a resolution for the additional display.
4. A new window will open and can be dragged to the 3rd monitor if desired.

**Note:** *When using the 3rd monitor with Hog 2PC, you should disable the default positions button in the Start-Up OS tab of the Hog iPC Configuration Panel prior to launching Hog 2PC. Otherwise the Hog 2PC window positions will return to the Hog iPC console's two primary monitors.*

## The USB Device Status Panel

The USB Device Status panel displays the connection status for internal Hog iPC components as well as external USB devices and adjusts the desk light LED brightness levels.



**Note:** This panel's default location is slightly to the right of the main Hog 2PC front panel. This is to allow quick access to the desklight and LED brightness controls.

### Desk Lights

The two mini faders on the right side of the USB Device Status panel are used to control the desklights and LED brightness. Clicking on the image of the desklight will toggle the illumination between white and blue.

**Note:** These setting are remembered by Hog 2PC until changed again.

### DMX Outputs

The seven indicators show the state of the seven supported universes of DMX output. Grey indicates 'not active', green indicates 'operating' and red indicates 'error'. The first four outputs will always be active on the Hog iPC console and relate to the internal DMX outputs. The other three become active as USB DMX Widgets or Super Widgets are connected and configured.

### Linear Time Code (LTC) Input

The Hog iPC console contains one internal USB LTC widget and requires no configuration.

The 'Enabled' indicator will turn green when the show currently loaded into Hog 2PC is set to use timecode input. Please refer to the Wholehog 2 manual for further information on enabling timecode input.

The 'Receiving' indicator will turn green when valid timecode is detected by the LTC widget. The value of the incoming timecode will be displayed below this indicator. Note that this display refers only to the incoming LTC signal, not to any other timecode source (such as MIDI or simulation).

### Expansion Wings

The 'Connected' and 'Receiving' indicator for the first playback wing and the programming wing will illuminate green to confirm the Hog iPC Frontpanel is connected.

The 'Connected' indicator for the second Playback Wing will turn green when a Playback Wing is detected. Hog 2PC supports one Playback Wing on the Hog iPC console. The Playback Wing must be configured through the config dialog before it will operate. The 'Receiving' indicator will flash green whenever data is received from the Wing.

## Working with Hog 2PC Show Files

### Saving and Loading

The show will be saved to the folder you chose at start-up. You can switch between saving or loading from the Hog iPC hard drive or an external USB drive by changing the show folder between the external drive and a folder on the Hog iPC console.



**CAUTION: Because Hog 2PC software does not automatically save your show, you should save often. In addition, be sure to save the show prior to exiting the Hog 2PC application.**

Once running, Hog 2PC software will allow you to save to and load from either the hard drive folder or an external USB drive.



**CAUTION: To avoid corrupting a show file, do not unplug a USB drive after loading a show from that drive.**

To save a show while running the Hog 2PC application, press the **Setup** key then press **Save Show** on the right touch screen.

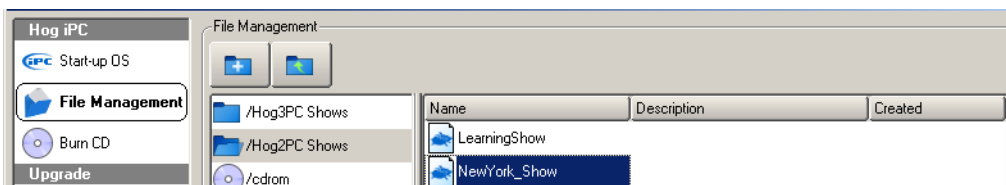
### Changing the Show Folder

To change the folder Hog 2PC uses to save and load shows, right click on the Frontpanel and select 'Change Folder'. The Show Locator window will open to allow selection of a different folder. You can also display the Show Locator window by opening the 'Change Show' window in the Hog 2PC application and clicking on the 'Change Folder' button in the top toolbar.

After selecting a new folder and clicking on Ok, Hog 2PC will start using the folder you specified. The folder currently in use by Hog 2PC is displayed at the bottom left of the 'Change Show' window.

### Transferring Hog 2PC Show Files

A Wholehog 2 show file is actually a folder containing several subfolders and files. Within the Hog 2PC application and the Hog iPC Configuration Panel, this show folder is displayed as a single Wholehog 2 show file.



If you copy this file to a CD or external drive, you will be able to access the subfolders and files. To transfer a Wholehog 2 show from a Hog 2PC system to a Wholehog 2 console or vice versa, be sure to include all items within the original Hog 2PC show folder or on the floppy

disk from a Wholehog 2 console. Any folder that is not recognized as a valid Wholehog 2 compatible show file, will not be recognized by the Hog iPC Configuration Panel or Hog 2PC.



**CAUTION: Altering or changing the hierarchy of any of the files within a Show file folder will corrupt the show file.**

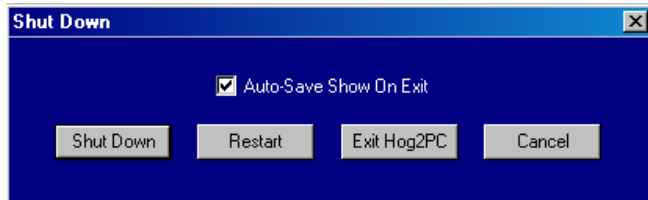
## Printing to File

Hog2 PC does not support printing directly to a printer, however it will create a postscript file that can be printed on a personal computer. After following the printing instructions in the Wholehog 2 user manual, a print file will be created in your current show folder. The file will be named for your show and will be either a postscript file (.ps) or a PCL5 file (.pcl) depending on the printer option you selected. This show folder can then be copied to external media or burned to a CD using the Hog iPC configuration panel. Once loaded into another computer, you can print this the .ps or .pcl file at your convenience by sending it directly to your printer; by copying it to a compatible printer from the DOS commandline; or by printing it from a utility such as Adobe Distiller or Ghostscript.

## Exiting Hog 2PC

To exit Hog 3PC, right click on a blue portion of the Front Panel and select Exit from the menu.

Alternately click the small x in the upper right corner of any Hog 2PC window. Select an option from the Shut Down dialog box.



- **Shut Down** shutdowns the Hog iPC console
- **Restart** reboots the Hog iPC console.
- **Exit Hog2PC** exits the current show and returns to the Hog iPC Configuration Panel
- **Cancel** cancels the exit procedure
- **Auto-Save Show On Exit** check box is selected by default, and on any of the above exit options the show will be saved in its current folder. To disable this function, un-check the auto-save box prior to selecting an exit option.

## Advanced Operations

### Displaying Touchscreen Windows

The Hog iPC console supports only two touchscreen monitors, but Hog 2PC software allows for four separate screens. If you have a show that was programmed for a Wholehog 2 console using additional monitors, viewing these additional screens may be awkward with the Hog iPC console. To turn off the additional screens, within Hog 2PC, select Setup, then Control Panel to access Display 1 and Display 2 (which correspond to the two external displays on the Wholehog 2 console).

**Note:** *An optional third monitor or touchscreen provides additional space for these screens. See Using an Optional 3rd Monitor with Hog 2PC on page 49 for more information.*

### Changing Window Positions

The Hog iPC console centers the Hog 2PC screens on the two included touchscreens by default. This option can be enabled or disabled in the Hog iPC Configuration Panel's Start-up OS tab (see page 18).

- When the Default Positions button is checked, the Hog 2PC screens restore to the factory settings whenever Hog 2PC is launched.
- When this function is disabled, Hog 2PC will recall the last position of the Hog 2PC screens.

The Hog 2PC screen positions are locked on the Hog iPC console. To unlock them, right click on a blue portion of the Hog 2PC Frontpanel and select "Lock Position". Once screen positions are unlocked, you can move them on the monitor using one of the following methods:

- Left click and drag the window's title bar (as with any other Windows application),
- Right click and drag anywhere on the window,
- Right click and use the cursor keys.

**Note:** *As the Frontpanel does not have a title bar, it can only be moved by positioning the mouse cursor over any blue part of the panel, then left clicking and dragging the mouse.*

It is also possible to minimize some or all of the Hog 2PC windows if you wish. Right click on the Frontpanel window and select one of the options from the popup menu:

- **Minimize All** hides all of the Hog 2PC windows
- **Minimize** hides only the Frontpanel window.
- **Show All** restores any of the Hog 2PC windows that have been minimized.

You can also minimize the touchscreen windows individually with the same method used in any other Windows application.

## Restoring Default Window Positions

If the Hog 2PC screens are in undesirable locations or missing when Hog 2PC is launched, select the **Default Positions** button in the Hog iPC Configuration Panel's Start-up OS tab to display a checkmark. This causes the Hog 2PC screens to restore factory window position settings whenever the Hog 2PC is launched. No checkmark indicated that **Default Positions** is disabled.

## Keyboard Shortcuts

All of the buttons on the Hog 2PC on-screen Frontpanel (with the exception of DBO) have keyboard shortcuts assigned to them. Most of these shortcuts are disabled by default to prevent accidental triggering from an external keyboard. You can enable them in the Hog iPC Configuration Panel, (see *Hog iPC Console Options* on page 18).

The following keyboard shortcuts are always enabled:

**Q** = Try Cue

**NumLock** = Set

**F1–F10** keys = Window functions

To display the keyboard shortcut for a particular Frontpanel button, move the mouse cursor over the button and keep it still for about half a second. A *tooltip* will appear to display the keyboard shortcut for that button. This technique can also be used to display the keyboard shortcuts for the encoder wheels. If you wish to disable the tooltips, right click on the Frontpanel and deselect **Show tooltips**. You can re-enable tooltips by right clicking and reselecting **Show tooltips** again.



## Hog 2PC Keyboard Shortcuts

Type Specifiers	
Group Position	F1 F2
Colour	F3
Beam	F4
Macro	F5
Page Effects	F6 F7
List	F8
Time	F9 or T

Main Command Keys	
Active	A
Blind	B
Clear	C
Copy	P
Delete	D
Goto	G
Highlight	H
Load	L
Main Go	}}
Main Stop	{[
Move	M
Next Page	::
Record	R
Release	Z
Skip Down	K
Skip Up	J
TryQ	Q
Undo	O
Update	U

Combinations	
Choose x	Shift + Number (1-8)
Go x	Tab + Number (1-8)
Stop x	~` + Number (1-8)
View keys	Shift + Func (F1-F10)
Window keys	Tab + Func (F1-F10)

Wheels	
Wheel 1	F10 + mouse/cursors
Wheel 2	F11 + mouse/cursors
Wheel 3	F12 + mouse/cursors

Others	
At (@)	@'
Backspace	Bkspace
Enter	Return/ Enter
Full	~#
Minus (-)	-
Next	N
Pig	Ctrl
Plus (+)	+
Set	Numlok
Setup	S
Slash (/)	/
Thru	* or X
Toggle Cursor Func.	\



## **Maintenance and Troubleshooting**




## Basic Hardware Troubleshooting

The following items describe basic troubleshooting for the Hog iPC console hardware. For software troubleshooting, refer to the software manual specific to the operating system (Wholehog 3 or Wholehog 2) you are using.

If you are experiencing trouble with your Hog iPC console, refer to the following table. If the problem persists, contact High End Systems Support at 800.890.8989 or [support@flyingpig.com](mailto:support@flyingpig.com).

### Troubleshooting Console Problems

Problem	Suggestion(s)
The console does not boot	<ul style="list-style-type: none"> <li>• Check the AC power switch at the back of the console is ON. Press the computer power button  to boot the console.</li> <li>• Check that monitors are plugged in, hooked up and turned on.</li> <li>• Check the Hard Drive LED on the back to see if it is flashing during the bootup.</li> <li>• Check that the keyboard and mouse are connected to the correct PS2 slots.</li> </ul>
No DMX output	<ul style="list-style-type: none"> <li>• Check that fixtures are properly patched in Hog 3PC or Hog 2PC.</li> <li>• Turn the AC power switch at the back of the console to OFF, wait 10 seconds and turn it back on.</li> <li>• Look for DMX indicators on fixtures or with a DMX tester.</li> </ul>
No Timecode Input	<ul style="list-style-type: none"> <li>• Check that timecode is properly enabled in Hog 3PC or Hog 2PC.</li> <li>• Turn the AC power switch at the back of the console to OFF, wait 10 seconds and turn it back on.</li> <li>• Confirm timecode source is valid with a timecode tester.</li> </ul>
Only one monitor is working	<ul style="list-style-type: none"> <li>• Check that monitors are plugged in, hooked up, and turned on.</li> </ul>
The touchscreen functions appear on the wrong monitor	<ul style="list-style-type: none"> <li>• Use the <b>Swap Touchscreens</b> button in the Hog iPC Configuration Panel</li> </ul>
MIDI is not functioning	<ul style="list-style-type: none"> <li>• Check that MIDI is properly enabled in Hog 3PC or Hog 2PC.</li> <li>• Turn the AC power switch at the back of the console to OFF, wait 10 seconds and turn it back on.</li> <li>• Confirm MIDI source is valid with a MIDI tester.</li> <li>• Watch for indication of MIDI IN or OUT on LEDs on back of the console.</li> </ul>
Starts with the wrong version of Hog PC software	<ul style="list-style-type: none"> <li>• Open the Hog iPC Configuration Panel and select the desired version of Hog PC.</li> </ul>
No intensity control on fixtures	<ul style="list-style-type: none"> <li>• Confirm the Grand Master fader (usually master #1) is up.</li> <li>• Confirm the master for the cuelist is up.</li> <li>• If fixtures are in the programmer or editor, turn off the Blind function.</li> <li>• Check to ensure intensity values are not parked.</li> </ul>

## Troubleshooting Touchscreen Problems

If you are experiencing trouble with your touchscreen monitor, refer to the following table. If the problem persists, you can find additional troubleshooting tips and product support from the touchscreen manufacturer.

Problem	Suggestion(s)
The monitor does not respond after you turn on the system.	<ul style="list-style-type: none"> <li>• Check that the monitor's Power Switch is on.</li> <li>• Turn off the power and check the monitor's power cord and signal cable for proper connection.</li> </ul>
Characters on the screen are dim	<ul style="list-style-type: none"> <li>• Refer to the <i>Monitor Control Buttons</i> on page 28 to adjust the brightness.</li> </ul>
The screen is blank	<ul style="list-style-type: none"> <li>• Refer to the <i>Monitor Control Buttons</i> on page 28 to adjust the brightness.</li> </ul>
OSD or power buttons don't work	<ul style="list-style-type: none"> <li>• Check to see that they are not locked out.</li> </ul>
Touch functions do not work	<ul style="list-style-type: none"> <li>• Make sure USB cable is securely attached at both ends.</li> <li>• Press the "Detect Touchscreens" button in the Hog iPC Configuration Panel.</li> </ul>
Monitor is stuck in Self Test mode	<ul style="list-style-type: none"> <li>• Unplug and reconnect the monitor, or unlock the power button and cycle the power to the monitor.</li> </ul>
Hog 2PC screens are not properly centered or missing	<ul style="list-style-type: none"> <li>• Reset the screen positions in the Configuration Panel, see <i>Changing Window Positions</i> on page 53.</li> </ul>
A 3rd monitor is connected but not functioning	<ul style="list-style-type: none"> <li>• Check that the 3rd monitor is properly attached and turned on.</li> <li>• Enable the 3rd monitor in the Hog iPC Configuration Panel and select a resolution.</li> <li>• Lower the resolution of the 3rd monitor.</li> </ul>
Some screens are missing from Hog 3PC or Hog 2PC on the standard two monitors.	<ul style="list-style-type: none"> <li>• Disable the 3rd monitor in the Hog iPC Configuration Panel and enable the <b>Default Positions</b> option to restore the windows to their default positions.</li> </ul>

---

## Hog iPC Console Frequently Asked Questions

---

### Hardware

#### ***How many universes of DMX output are possible from the Hog iPC console?***

The console has four universes of DMX built in and is expandable with a USB DMX Super Widget, or individual USB DMX Widgets. When operating Hog 3PC software the console is expandable to eight universes and seven when using Hog 2PC software.

#### ***Why won't my USB DMX Widget work with Hog 3PC?***

Hog 3PC is only compatible with single USB DMX Widgets that are enabled for use with Hog 3PC. Many USB DMX Widgets will need to be enabled for compatibility with Hog 3PC. All USB DMX widgets will continue to function with Hog 2PC software. Contact High End Systems for upgrade information.

#### ***How can I tell if my USB DMX Widget is compatible with Hog 3PC?***

Hog 3PC enabled widgets are identified by a silver coloring around the 5-pin XLR connector, and a label on the bottom that indicates "Hog 3PC USB DMX Widget".

#### ***Can the Hog iPC console running Hog 3PC software connect directly to a Wholehog 3 DP2000 or Wholehog 3 Input/Output Processor?***

The Hog iPC console will **NOT** connect directly to a Wholehog 3 DP2000 or Wholehog 3 Input/Output Processor. However when networked as a client to a Wholehog 3 console, the Hog iPC console may access network devices connected to the Wholehog 3 console.

#### ***How many monitors can be connected to the Hog iPC console?***

The Hog iPC console includes 2 external 12 inch touchscreen monitors. The resolution is locked at 800x600 and drivers for the supplied touchscreens are pre-installed. One additional monitor can be connected to the DVI port and configured to any supported resolution. This monitor can be an additional Aspen or ELO touchscreen or another monitor.

#### ***How many playback expansions are possible with the Hog iPC console?***

You may connect up to four USB Playback wings when operating with Hog 3PC software or one USB Playback Wing when operating Hog 2PC software.

### Software

#### ***Can the Hog 3PC application load my Hog 2PC shows or vice versa?***

Because the two versions of Hog PC are based on two different console systems, show files are **NOT** compatible between Hog 3PC and Hog 2PC applications. You will need to reprogram to switch the same show from one version of Hog PC software to another.

#### ***How do I switch the console to the classic Hog 2PC software?***

The Hog iPC Configuration Panel allows you to select the startup operating system, either Hog 3PC or Hog 2PC. The console always boots up to the previously assigned operating system.

***What else does the Hog iPC Configuration Panel do?***

The Hog iPC Configuration Panel enables you to manage files stored on the Hog iPC console, burn files to CD, update Hog 3PC, Hog 2PC, and Hog iPC software as well as perform diagnostic functions as needed.

***Can the Hog iPC connect to any visualizers?***

The Hog iPC console can connect via DMX to any lighting visualizer software using either Hog 3PC or Hog 2PC software. Additionally, when using Hog 3PC software, a direct connection via Ethernet to ESP Vision or WYSIWYG is possible.

## Hog 3PC Application

***What can be accomplished by networking the Hog iPC console running Hog 3PC with other Wholehog 3 Operating Systems?***

When networked with other Hog 3PC computers, the Hog iPC console, or a Wholehog 3 console or rack mount unit, the Hog 3PC software becomes an additional programming and playback device. It will function as another console on the network. This enables designers, technicians, and multiple programmers to view and manipulate show data from locations other than the primary lighting controller.

***Are Hog 3PC shows compatible with all Wholehog 3 operating systems?***

You can load shows to and from Hog 3PC, Wholehog 3 consoles or rack mount units as long as the software versions for the Wholehog 3 operating system match.

***What is Hog 3PC Remote Focus?***

The Hog 3PC software can be used with wired or wireless networking as a remote focus device for the Wholehog 3 Operating System. When networked with other Hog 3PC computers, the Hog iPC console, or a Wholehog 3 console or rack mount unit, the Hog 3PC software provides remote access of show data and programming abilities. A customized interface allows for optimal usage on a tablet PC computer. While any Windows XP computer can be used as a remote focus device for the Wholehog 3 Operating System, a tablet PC provides the most convenient, hands-on, portable functionality.



## Hog 2PC Application

### ***When using the Hog iPC console with Hog 2PC, how do I transfer show files without a floppy drive?***

The Hog iPC console supports most USB storage devices that are compatible with Windows XP. You can connect USB Floppy drives, USB flash drives, etc. or use the internal CDRW drive to copy files to or from the hard drive.

### ***Can I use Wholehog 2 console accessories with the Hog iPC console?***

The Wholehog 2 Expansion wing and remote will not operate with the Hog iPC console. Additionally the Wholehog 2 Overdrive unit will not operate with the Hog iPC console, however the same functionality is achieved with external USB DMX widgets or a USB DMX Super Widget.

### ***Are Hog 2PC shows compatible with all Wholehog 2 operating system consoles?***

You can load shows to and from Hog 2PC, Wholehog 2 consoles or rack mount units, Hog 1000 and Hog 500 consoles as long as the software versions for the Wholehog 2 operating system match.

## Cleaning the iPC Console and Touchscreens



**WARNING: To avoid risk of electric shock, do not disassemble the brick supply or display unit cabinet. The unit is not user serviceable.**

**Always unplug the display unit from the power outlet before cleaning.**

To clean the display unit cabinet, use a cloth lightly dampened with a mild detergent.



**Avoid getting liquids inside your touchscreen monitor. If liquid does get inside, have a qualified service technician check it before you power it on again.**

To clean the console and touchscreens, use only a soft cloth damped with water. Glass cleaner or other solvents will dull the finish of the console and the touchscreen case. **Do not** use alcohol (methyl, ethyl or isopropyl) or any strong solvent. **Do not** use thinner or benzene, abrasive cleaners or compressed air. **Do not** wipe the screen with a cloth or sponge that could scratch the surface.



**System Restore**



## Restoring the Hog iPC System Files

The Hog iPC console ships with a Hog iPC System Restore CD that contains information to use in the event of a total hard drive failure. You can use this CD to restore the original installation of Windows XPe and Hog 3PC/Hog 2PC/Hog iPC software.

### Before You Begin

To restore your system files, you'll need:

- Hog iPC System Restore CD
- Keyboard, either PS/2 or USB

### Using the Hog iPC System Restore CD

1. Connect a keyboard to the console.
2. Put in your "Hog iPC System Restore CD" and reboot.
3. As the system boots up, press a key on the keyboard when you see the "Hit any key to boot from CD..." message.
4. A recovery screen will prompt you to select a Full or Partial recovery.



Full recovery will erase the hard drive and the partial will not.



**CAUTION: The Full recovery process will remove ALL show files from the Hog iPC hard drive**

**Note:** *The partial recovery process will reinstall the XPe image and the Hog PC applications without erasing your show files.*

5. The CD will boot to the recovery system and immediately begin drive restoration. The process may take anywhere from 10-15 minutes, and will automatically reboot your console when finished.

**Do not touch any keys or attempt to interrupt the restore process.** If the process is interrupted for any reason, simply reboot and return to Step 1 to ensure the Hog iPC console is completely restored.

6. Once the system is restored and rebooted, remove the System Restore CD and store in a safe place.

## Upgrading Application Files and Configuration

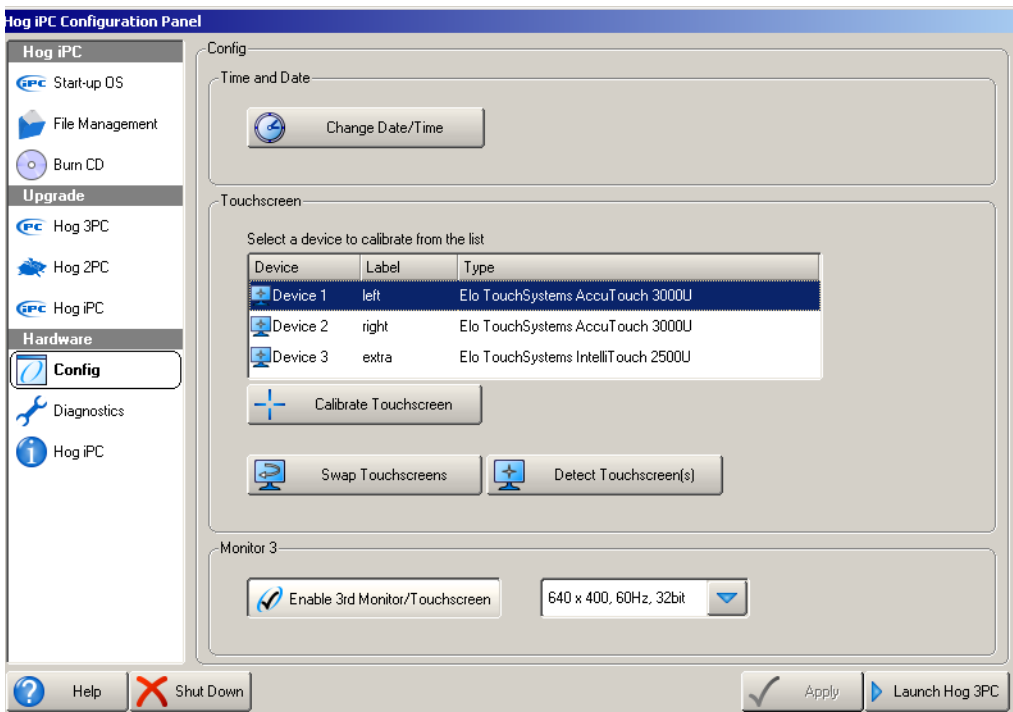
### Upgrading Applications

The Hog iPC, Hog 3PC and Hog 2PC applications are being upgraded continually and it is likely that there is a newer version available of one or more of these applications than exists on your system restore CD. You can find the latest versions at the Flying Pig Systems website (<http://www.flyingpig.com/support/index.shtml>) to compare with what is printed on your System Restore CD. See *Upgrade Options* on page 23 for more information on how to upgrade applications on the Hog iPC console.

### Restoring Touchscreen Configuration

Following the completion of the system restore process, use the following steps to restore the default Touchscreen Configuration.

1. Make sure both monitors are plugged into the appropriate VGA ports, and the touchscreens are both plugged into USB ports.
2. The touchscreens will not be active. Use the trackball (or a mouse if you have one attached), and navigate to the **Config** menu in the **Hardware** section of the Hog iPC Configuration Panel.
3. Press the **Detect Touchscreen(s)** button.

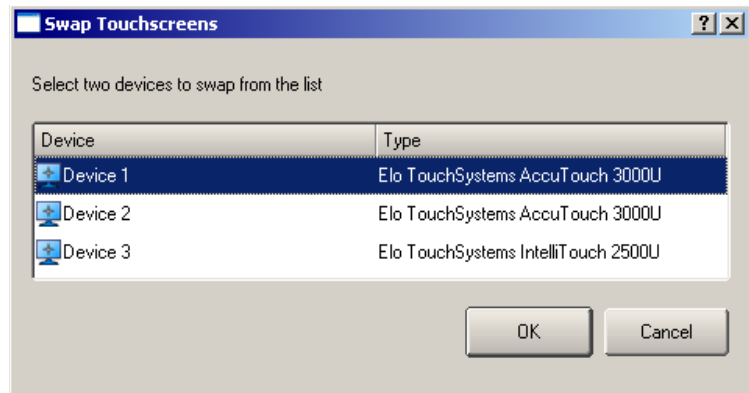


- After the devices are detected and added, you can select a device and press the **Calibrate Touchscreen** button. A white screen with directions to touch a cross at each corner of the screen will appear. After the first touchscreen calibration is completed the calibration screen will close.

The calibration will terminate if no touch is received on the screen within 10 seconds. You can also right click on a device in the selection box and select **Calibrate** to begin the calibration routine.

If you notice that the touchscreen touch functions are switched, press the **Swap Touchscreens** button. A dialog box will appear listing the attached touchscreen devices.

The first two devices listed are the Hog iPC console touchscreens. The third device is an optional monitor. Select whichever two you wish to swap and press OK.





S a f e t y I n f o r m a t i o n



## Safety Information



**WARNING: For Continued Protection Against Electric Shock**

**This equipment for connection to branch circuit having a maximum overload protection of 20 A.**



**WARNING: For Continued Protection Against Electric Shock**

1. If this equipment was received without a line cord plug, attach the appropriate line cord plug according to the following code:
  - brown - live
  - blue - neutral
  - green/yellow - earth
2. As the colours of the cores in the mains lead of this equipment may not correspond with the coloured markings identifying the terminals in your plug, proceed as follows:
  - the core which is coloured green and yellow must be connected to the terminal in the plug which is marked with the letter E or by the earth symbol , or coloured green or green and yellow.
  - the core which is coloured blue must be connected to the terminal which is marked with the letter N or coloured black.
  - the core which is coloured brown must be connected to the terminal which is marked with the letter L or coloured red.
3. Class I equipment. This equipment must be earthed.
4. Equipment suitable for dry locations only. Do not expose this equipment
5. to rain or moisture.
6. Disconnect power before servicing.
7. Refer servicing to qualified personnel; no user serviceable parts inside.

## Importantes Informations Sur La Sécurité



### **Mise En Garde: Pour Une Protection Permanente Contre Les Incendie**

**Pour Une Protection Permanente Contre Les Incendies Cet appareil de connection au circuit comporte une protection contre les surcharges de 20 A.**



### **Mise En Garde: Pour Une Protection Permanente Contre Les Chocs Électriques**

1. Si cet équipement est livré sans prise de cable, veuillez connecter la prise de cable correcte selon le code suivant:
  - marron - phase
  - bleu - neutre
  - vert/jaune - terre
2. Débrancher le courant avant d'effectuer des réparations.
3. Cet équipement doit être uniquement utilisé dans des endroits secs. Ne pas l'exposer à la pluie ou l'humidité.
4. À l'intérieur de l'équipement il n'y a pas de pièces remplaçables par l'utilisateur. Confiez l'entretien à un personnel qualifié.
5. Equipement de Classe I. Cet équipement doit être mis à la terre.

## Wichtige Hinweise Für Ihre Sicherheit



### Warnung: Zum Schutz Vor Brandgefahr

**Dieses Gerät darf nur an eine Zweigleitung mit einem Überlastungsschutz von höchstens 20 A angeschlossen werden.**



### Warnung: Zum Schutz Gegen Gefährliche Körperströme

1. Wenn dieses Gerät ohne einen Netzkabelstecker erhalten wurde, ist der entsprechende Netzkabelstecker entsprechend dem folgenden Code anzubringen:
  - Braun - Unter Spannung stehend
  - Blau - Neutral
  - Grün/Gelb - Erde
2. Da die Farben der Leitungen im Hauptanschluss möglicherweise nicht mit den farbigen Markierungen die die Anschlussklemmen identifizieren
  - Die Grün und Gelb gefärbte Leitung muss im Stecker mit der mit dem Buchstaben E oder dem Erde Symbol markierten , oder der Grün und Gelb gefärbten Anschlussklemme verbunden werden.
  - Die blau gefärbte Leitung muss mit der mit dem Buchstaben N oder der Schwarz gefärbten Anschlussklemme verbunden werden.
  - Die Braun gefärbte Leitung muss mit der mit dem Buchstaben L markierten oder rot gefärbten Anschlussklemme verbunden werden.
3. Dieses Gerät gehört zur Klasse I. Dieses Gerät muß geerdet werden.
4. Diese Geräte sind nur zum Einbau in trockenen Lagen bestimmt und müssen vor Regen und Feuchtigkeit geschützt werden.
5. Vor Wartungsarbeiten stets den Netzstecker ziehen.
6. Servicearbeiten sollten nur von Fachpersonal ausgeführt werden. Das Gerät enthält keine wartungsbedürftigen Teile.

## Información Importante De Seguridad



### **Advertencia: Para Protección Continua Contra Incendios**

**Este equipo debe conectarse a un circuito que tenga una protección máxima contra las sobrecargas de 20 A.**



### **Advertencia: Para La Protección Continua Contra Electrocuiones**

1. Si se recibió este equipo sin el enchufe de alimentación, monte usted el enchufe correcto según el clave siguiente:
  - moreno - vivo
  - azul - neutral
  - verde/amarillo - tierra
2. Desconecte el suministro de energía antes de prestar servicio de reparación.
3. Este equipo se adecua a lugares secos solamente. no lo exponga a la lluvia o humedad.
4. Derive el servicio de reparación de este equipo al personal calificado. El interior no contiene repuestos que puedan ser reparados por el usuario.
5. Equipo de Clase I. Este equipo debe conectarse a la tierra.

## Importanti Informazioni Di Sicurezza



### Avvertenza: Per Prevenire Incendi

**Questa apparecchiatura e' da collegarsi ad un circuito con una protezione da sovraccarico massima di 20 amperes.**

### Avvertenza: Per Prevenire Le Scosse Elettriche

1. Se questa apparecchiatura è stata consegnata senza una spina del cavo di alimentazione, collegare la spina appropriata del cavo di alimentazione in base ai seguenti codici:
  - marrone - sotto tensione
  - blu - neutro
  - verde/giallo - terra
2. Disinnestare la corrente prima di eseguire qualsiasi riparazione.
3. Questa apparecchiatura e' da usarsi in ambienti secchi. Non e' da essere esposta ne alla pioggia ne all' umidita'.
4. Per qualsiasi riparazione rivolgersi al personale specializzato. L' utente non deve riparare nessuna parte dentro l' unita'.
5. Aparecchio di Classe I. Questa apparecchiatura deve essere messa a terra.



## Vigtig Sikkerhedsinformation

**Advarsel: Beskyttelse mod elektrisk chock.**

**VIGTIGT! LEDEREN MED GUL/GROEN ISOLATION MAA KUN TILSLUTTES KLEMME MAERKET ELLER .**

## 安全に関する情報

警告: 火災からの継続的な保護の為に

- この装置には分岐回線への接続の為に最大 20 A の過負荷防止機構を持っています。

警告: 感電に対する継続的な保護の為に

1. プラグの付いていない状態でこの装置を受け取った場合は、以下のコード表にしたがって、適切にプラグを取り付けて下さい。:
  - Brown (茶色) - Live (ライブ)
  - Blue (青) - Neutral (ニュートラル)
  - Green/Yellow (緑/黄色) - Earth (アース)
2. ここで説明されている各部品に関する色があなたの持っているプラグの端末の色と対応していない場合があります。以下にしたがって接続して下さい。:
  - Green/Yellow (緑/黄色) のケーブルを、プラグの端末に E もしくはアースのシンボル ⊕ の表記のある物に接続するか、Green/Yellow (緑/黄色) の物に接続して下さい。
  - Blue (青) のケーブルを、プラグの端末に N が表記された物もしくは黒に塗られた物に接続して下さい。
  - Brown (茶色) のケーブルを、プラグの端末に L が表記された物もしくは赤に塗られた物に接続して下さい。
3. この装置は Class I 機器です。この為この装置はアースしなければなりません。
4. この装置は乾燥した状態でのみ使用出来ます。この装置を雨又は湿気にさらさないで下さい。
5. 修理点検を行う場合は事前に電源を切り離して下さい。
6. 整備点検の項目は資格を持った技師の為の物です。;ユーザーによって修理点検を行えるパーツは存在していません。