

BOARD ROOM UPGRADE

Addendum No. 4 Dated October 7, 2015

The Alameda-Contra Costa Transit District herewith issues this Addendum No. 4 to the above reference Invitation for Bid. Except as modified below, all other terms and conditions shall remain in effect. ~~Strikethrough~~ text represent deletions from original IFB text and **bold/italicized/underlined text** represent additions to original IFB text.

Please see attachments, per this Addendum No. 4, for clarification and specification for Video Monitor and Mount to be installed in Conference Room 204, as shown on Drawing Sheet A3.1, Elevation 5.

F5500 Slim LED TV



MODELS

50" CLASS UN50F5500	40" CLASS UN40F5500
46" CLASS UN46F5500	32" CLASS UN32F5500



Universal Remote Control

PRODUCT HIGHLIGHTS

- Smart TV 2.0 with S-Recommendation
- Dual Core Processor
- Wi-Fi Built-in
- Clear Motion Rate 120

KEY FEATURES

PICTURE QUALITY

- Full HD 1080p
- Clear Motion Rate 120

SMART TV 2.0

- Dual Core Processor
- Smart Hub
- Full Web Browser
- S-Recommendation

SMART INTERACTION 2.0

- Motion Control Ready (limited gesture)*

SMART CONNECTIVITY

- AllShare™
- Samsung Smart View (Clone View Only)

CONNECT SHARE™ MOVIE

SLIM DESIGN

CONNECTIONS

- 3 HDMI® Connections
- 2 USB Connections
- Wi-Fi Built-in
- 1 Component in
- 1 Shared Composite in (AV)

AUDIO

- Dolby® Digital Plus, Dolby® Pulse
- DTS Premium Sound | 5.1™ decoding with DTS Studio Sound™ processing

ECO SENSOR

INCLUDES

- Universal Remote Control

*Requires Skype™ Camera (sold separately)

F5500 Slim LED TV

PICTURE QUALITY

Full HD 1080p:

The realistic detail of Full HD images invites you to enjoy a viewing experience that redefines reality.

Clear Motion Rate 120:

A Clear Motion Rate of 120 is a great level of motion-clarity. TVs with this CMR can display action-packed movement with sharpness, clarity and contrast. Clear Motion Rate was developed to accurately measure how well an LCD or LED TV can depict fast-moving images. Previously, motion-clarity was calculated by the frame refresh rate alone. But CMR offers a more complete measure by calculating 3 factors: frame refresh rate, image processor speed and backlight technology.

SMART TV 2.0:

The Samsung Smart TV finds the movies and TV shows you like – and more. Navigate within the 5 Smart Hub content panels. Easily discover movies, shows, and social posts with less searching and more watching.

Dual Core Processor:

Makes multitasking fast. Browse the web faster and quickly download Apps with this feature.

Smart Hub:

Our new interface organizes your entertainment and content into 5 convenient panels: On TV, Movies and TV Shows, Social, Apps, and a panel for your Photos, Videos and Music.

Full Web Browser:

All the benefits of Full Web Browsing, right on your TV. From social sites like Facebook® and Twitter® to news, weather, entertainment, blogs and more. Discover even more content possibilities with your Smart TV.

S-Recommendation:

Discover what you want to watch without with customized content options based on your preferences. Or visit the full S-Recommendation hub to find new things to watch.

SMART INTERACTION 2.0:

Use hand gestures* to control your TV in new and unexpected ways.

SMART CONNECTIVITY

AllShare™:

Samsung AllShare Play lets you and your family seamlessly share your content across your DLNA-connected Samsung devices, without the need for a network, cables or a connecting device.

Samsung Smart View (Clone View Only):

Stream content playing on your TV straight to your mobile device so you never miss a second of the action.

CONNECTSHARE™ MOVIE:

Lets you watch videos, play music or view photos* from a USB connection without needing to use a PC or special equipment. Simply plug your USB directly into your Samsung TV's USB port and watch on the big screen with friends and family.

*Supported formats include AVI, ASF, MP3, JPEG and others. See user manual for full list of supported video/music/photo formats.

CONNECTIONS

HDMI®:

High-quality single-cable digital audio/video interface for connecting the TV to a digital cable box, satellite box, DVD and Blu-ray Disc® Player, PC computers, PC portable devices, new-generation tablets and devices featuring the HDMI® output. CEC capability permits the control of the TV and component from one remote control handset.

USB:

Connects a variety of computer, audio and video devices to the TV. USB movie capability allows the streaming of video from storage devices, cameras, camcorders and USB drives.

Wi-Fi Built-in:

No additional equipment is needed to connect with an existing wireless router in your home network and start accessing Samsung Apps or other Smart TV features.

Component in:

Analog video connection transmits HD RGB video using three RCA connections.

Shared Composite in (AV):

Analog video connection transmits video using one RCA connection.

*Requires Skype™ Camera (sold separately)



F5500 Slim LED TV

AUDIO

Dolby® Digital Plus / Dolby® Pulse:

Optimizes the TV sound quality when viewing and listening to Internet movies, Internet music and other content played back from wired or wireless mobile phones, PCs and tablet devices.

DTS Premium Sound | 5.1™ decoding with DTS Studio Sound™ processing:

Delivers immersive 5.1 surround sound from any DTS-encoded content and converts any two-channel audio content into a 5.1 DTS surround sound track for discrete surround sound playback. Experience surround sound with maximum bass response, dialog clarity and consistent volume levels from all your content, including Blu-ray™ movies, TV programming, streaming and games.

ECO SENSOR:

Measures the intensity of the light in the room and automatically adjusts the brightness of the image on the TV, for more intelligent energy management.

ACCESSORIES INCLUDED

Universal Remote Control:

A remote control that has universal function and can therefore operate various types of devices, i.e. a set-top box. Minimizing the amount of remote controls necessary.

WARRANTY

1-year parts and 1-year labor warranty (90-days parts and labor for commercial use) with in-home service, backed by Samsung toll-free support.

Appearance and performance of products may vary. Some features may not be available in all areas. The guide is provided for dealer information purposes only. All information included herein is subject to change without notice. Samsung is not responsible for any direct or indirect damages, arising from or related to use of or reliance on the content.

©2013 Samsung Electronics America, Inc. Samsung is a trademark or registered trademark of Samsung Electronics Co., Ltd. Blu-ray Disc® and Blu-ray™ are trademarks of the Blu-ray Disc® Association. All other brand, product, service names and logos are marks and/or registered trademarks of their respective owners. Screen images are simulated. Some devices may require Internet access. Apps may vary by product model.

ConnectShare is a trademark of Samsung Electronics Co., Ltd.

All other product and brand names are trademarks or registered trademarks of their respective owners.

Screen images are simulated.

MODELS

50" CLASS UN50F5500 – UPC 887276022147

Order code: UN50F5500AFXZA

DIMENSIONS (WxHxD)

TV without stand: 44.7" x 26.3" x 2.0"

TV with stand: 44.7" x 29.2" x 12.1"

Package: 56.2" x 30.4" x 6.4"

WEIGHT

TV without stand: 28.7 lbs.

TV with stand: 32.2 lbs.

Package: 41.2 lbs.

46" CLASS UN46F5500 – UPC 887276022635

Order code: UN46F5500AFXZA

DIMENSIONS (WxHxD)

TV without stand: 41.7" x 24.7" x 1.9"

TV with stand: 41.7" x 27.6" x 12.1"

Package: 52.9" x 28.3" x 6.2"

WEIGHT

TV without stand: 23.8 lbs.

TV with stand: 27.3 lbs.

Package: 34.2 lbs.

40" CLASS UN40F5500 – UPC 887276022628

Order code: UN40F5500AFXZA

DIMENSIONS (WxHxD)

TV without stand: 36.5" x 21.7" x 1.9"

TV with stand: 36.5" x 24.2" x 10.4"

Package: 46.9" x 24.3" x 5.8"

WEIGHT

TV without stand: 17.6 lbs.

TV with stand: 20.1 lbs.

Package: 26.5 lbs.

32" CLASS UN32F5500 – UPC 882776021706

Order code: UN32F5500AFXZA

DIMENSIONS (WxHxD)

TV without stand: 29.1" x 17.5" x 1.9"

TV with stand: 29.1" x 20.1" x 10.4"

Package: 38.8" x 23.5" x 5.6"

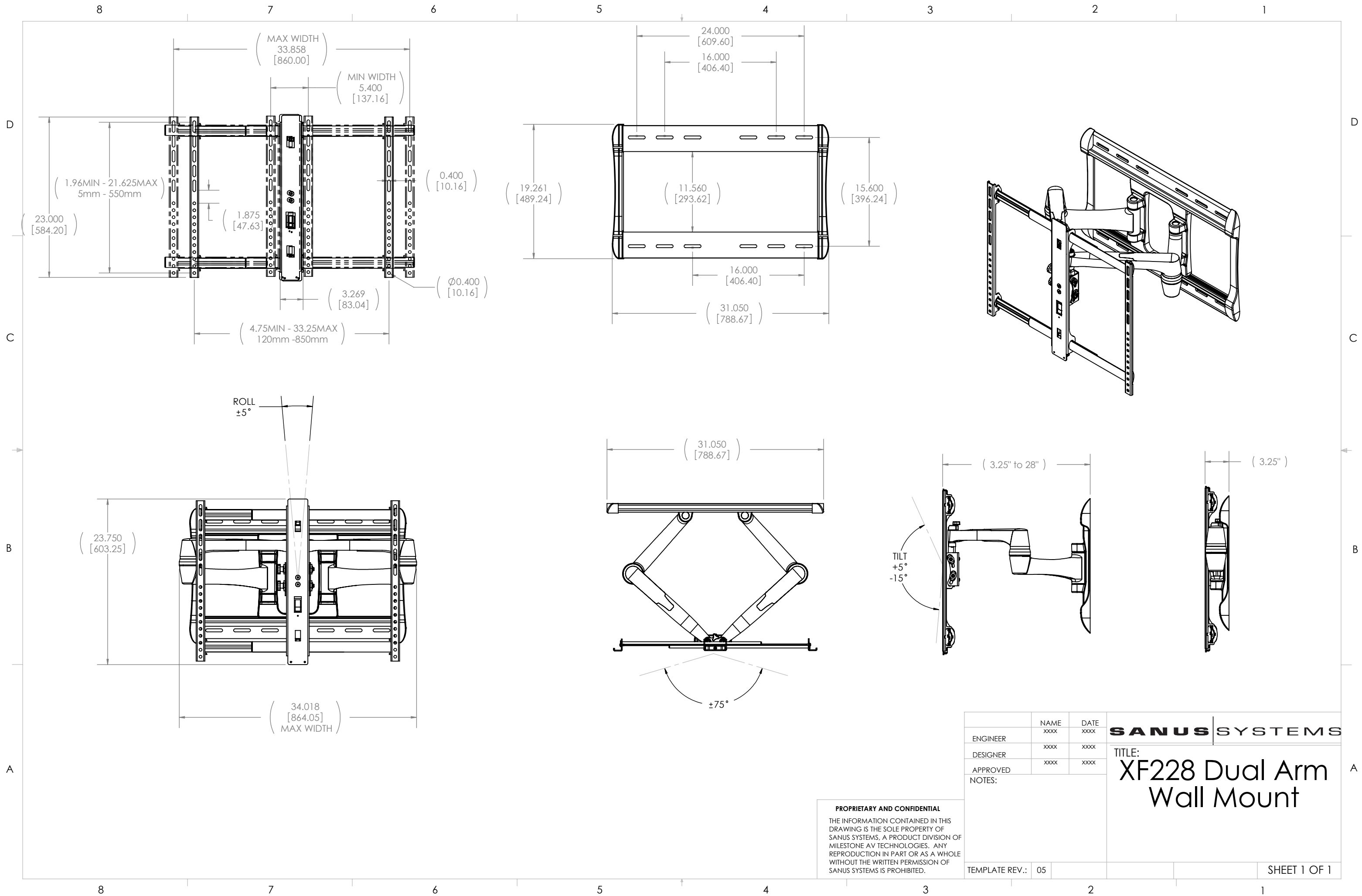
WEIGHT

TV without stand: 11.0 lbs.

TV with stand: 13.4 lbs.

Package: 17.9 lbs.





ENGINEER	NAME	DATE	SANUS SYSTEMS TITLE: XF228 Dual Arm Wall Mount
DESIGNER	xxxx	xxxx	
APPROVED	xxxx	xxxx	
NOTES:			
TEMPLATE REV.:	05	2	SHEET 1 OF 1

PROPRIETARY AND CONFIDENTIAL
 THE INFORMATION CONTAINED IN THIS DRAWING IS THE SOLE PROPERTY OF SANUS SYSTEMS, A PRODUCT DIVISION OF MILESTONE AV TECHNOLOGIES. ANY REPRODUCTION IN PART OR AS A WHOLE WITHOUT THE WRITTEN PERMISSION OF SANUS SYSTEMS IS PROHIBITED.