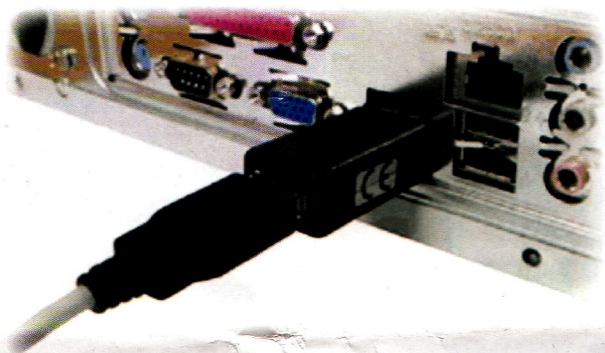


USB Keylogger User Manual

Recording Mode: (Support any systems)



Please connect the USB key logger to your computer host and USB keyboard as above picture, it will start recording automatically.

Playback Mode: (Support Windows XP Vista Windows 7, do not support MAC)

Please connect the USB key logger with computer host and USB keyboard as recording

1

//Password Setting

[2](0)2010-11-04 23:47:30 //Time

Setting (modify "(0)" to "(1)" to active setting)

[3]***0123456789abcdefghijklmnopqrstuvwyz*

** //The use of the character

"[1] adm88" is the password, you can change "adm88" to your password.

Tips: the super password is "wuw88", you can not change it, please keep this password in secure.

"[2](0)2010-11-04 23:47:30" is setting the date and time, you have to modify "(0)" to "(1)" to active setting, to modify the date and time as this format "year-month-date hour:minute:second".

3

mode, enter password "adm88", and wait for 2~3 seconds, the keyboard will be invalid, the system will recognize the USB key logger as a movable U disk, click "My Computer" on desktop, it will display as a movable U disk, you can double click to open it, it will display as below:

All keystrokes are save as "20101106.txt" the recording file format save with year, month and day, will change the file name day by day, to easy to find out the keystrokes.

The file "LIST.txt" is config file to setting the password and date and time, below is the contents:

2010-09-11 Rev0.1

[1]adm88

2

"[3]***0123456789abcdefghijklmnopqrstuvwyz ***" is for copy and paste the characters for password and date time modify, because the keyboard was invalid during playback mode.

Note: After modified please save and exit.

The file "FANNAL.txt" is show the current date and time of the key logger, only for reference propose.

All files are can be deleted, it will create on next time automatically.

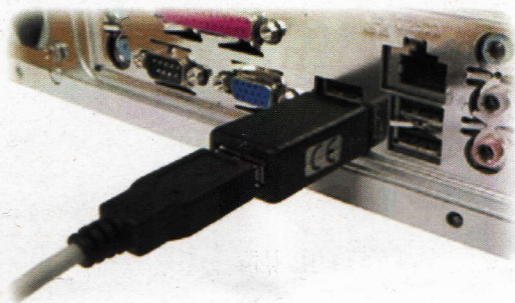
Quit the playback mode:

To quit the playback mode please click quit the USB flash drive as a normal U disk, please do not just plug it out without safe quit. It will damage the key logger, after removed please press "ESC" key to release the keyboard then go to "Record mode".

4

USB 记录器说明书

记录模式: (支持任何系统)



请参照上图把 USB 记录器连接在电脑主机和 USB 键盘, USB 记录器将开始记录所有输入的按键.

读取模式: (读取模式支持 windows XP, Vista windows 7, 不支持 MAC)

请把 USB 记录器连接在电脑主机和 USB 键盘, 从键盘输入密码 “adm88”, (当输入此密码无效或忘记新设密码时, 可以输入超级密码 “uw88”

1

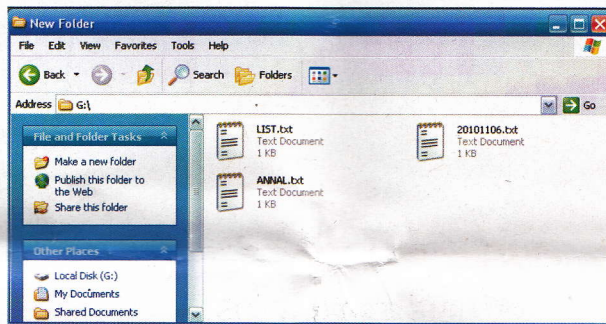
2010-09-11 Rev0.1

```
[1]adm88
//Password Setting
[2](0)2010-11-04          23:47:30
//Time Setting
[3]***0123456789abcdefghijklmnopqrstuvwyz*
** //The use of the character
```

“[1] adm88”是密码, 你可以更改, 下次登录将输入新密码有效, “[2](0)2010-11-04 23:47:30” 是设定系统时间日期, “[3]***0123456789abcdefghijklmnopqrstuvwyz***” 是字符串, 方便设定密码和系统时间, 因为在读取模式时, 键盘不起作用, 可以用鼠标直接拷贝粘贴.

3

便可进入读取状态), 等待 2~3 秒, 这时键盘将失去作用, 系统将识别 USB 记录器为移动 U 盘, 点击桌面上的 “我的电脑”, 将会看见一个移动盘符, 双击此移动 U 盘将打开, 显示如下:



所有的按键值将保存在 “20101106.txt” 文件中, 文件命名将按照年月日, 每天创建一个新文件, 方便查询记录内容.

文件 “LIST.txt” 可设定密码和系统日期, 内容如下:

2

注: 在修改时间时请将以上第 2 条中 “ [2](0)2010-11-04 23:47:30 //Time Setting” 中 “(0)” 的 0 改成 1, 后保存. 文件 “FANNAL.txt” 是显示当前时间日期, 用于参考.

所有文件都可以删除, 再次读取时将会重新生成. 退出读写模式:

退出读写模式请点击桌面右下角任务栏移动设备, 点击安全退出移动 U 盘, 如安全退出 U 盘一样操作, 请不要直接拔出记录器, 那样会损坏设备, 退出后请按键盘 “ESC” 键释放键盘到记录模式.

4