

Table of Contents

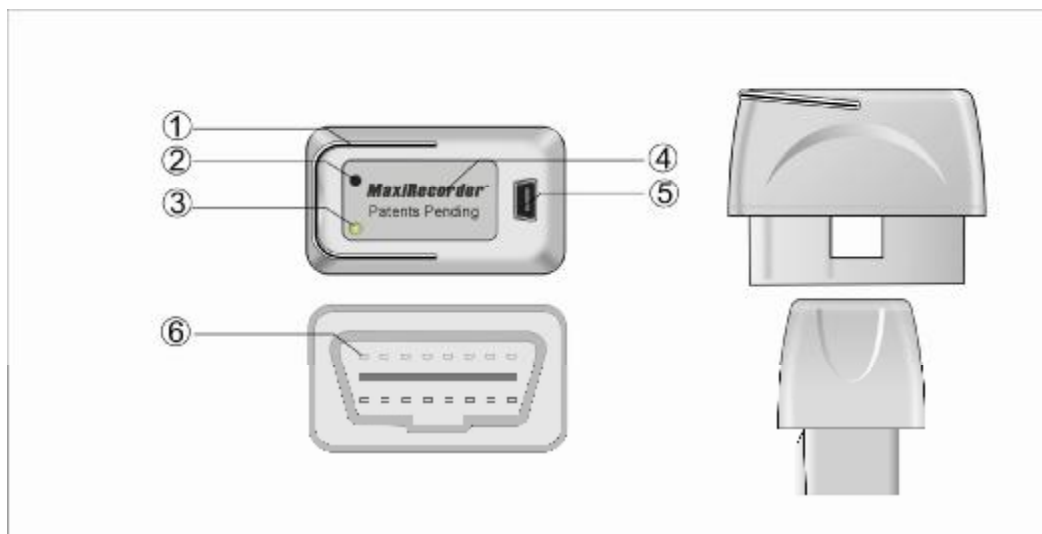
1. Safety Precautions and Warnings1	To edit existing vehicle information.....19
2. Tool Descriptions	Setting Unit of Measure.....20
Product Specifications.....2	Setting Parameter Thresholds.....21
Product Accessories2	Setting Work Time.....22
3. MaxiRecorder Installation	Setting Idle Time Band.....23
Connecting the Device to a Vehicle3	7. Device Settings
Installing MaxiRecorder Software.....4	Device version.....24
Connecting the Device to a Computer.....4	Updating Device Software.....25
Downloading Trip Data.....4	Set the Device Clock.....25
Vehicle/ Drive ID.....5	Setting Braking Thresholds.....26
4. Toolbar8	Setting Acceleration Thresholds.....27
5. MaxiRecorder Home Page	Setting Speed Bands.....27
Downloading Trip Data.....9	Setting Trace Parameters.....28
Deleting Trip Data.....9	Resetting Device.....29
Fuel Entry.....9	Enabling Functions.....29
To add a New Fuel Entry.....10	Enabling/Disabling Reset Check Engine Light..29
To edit an Existing Fuel Entry.....10	Enabling LED Indicator.....30
To delete an Existing Fuel Entry.....10	Enabling Alarm.....30
Overall Summarized Trip log.....11	Enabling VIN Mode.....30
Summarizes data by selected data range....11	8. Trip Log
Detailed View.....12	To view the Trip Log List.....31
Summary.....12	To view the Trip Log Report.....32
I/M Readiness.....12	To view the Trip Log Table.....32
Parameters.....13	To view the Trip Log Plot.....33
Troubles.....13	9. Activity Log
Exception Time.....15	To view Activity Log of a certain device.....39
6. Setup	To view Activity Log of selected date range.....39
Device ID.....15	10. Print Command40
To view Device ID(s).....15	11. Help Command40
To edit Device ID(s).....16	12. Changing Visual Style40
Driver ID.....16	13. Warranty and Service
To view Driver IDs.....16	One Year Limited Warranty.....41
To add a new driver ID.....17	Service Procedures.....41
To delete an existing driver ID.....17	
To edit existing driver information.....18	
Vehicle ID.....18	
To view Vehicle Ids.....18	
To add a new vehicle ID.....19	
To delete an existing vehicle ID.....20	

1. Safety Precautions and Warnings

To prevent personal injury or damage to vehicles and/or the MaxiRecorder, read this instruction manual first and observe the following safety precautions at a minimum whenever working on a vehicle:

- I Always keep attentive while driving.
- I Check the date and time setting of the MaxiRecorder before you apply it to a vehicle if it has been unused for a long time.
- I DO NOT connect the device to a computer when it is still connected to the car.
- I DO NOT try to make any adjustments while driving.
- I DO NOT mount the MaxiRecorder in a position which can obstruct the view of the driver.
- I DO NOT mount the MaxiRecorder in a manner which could cause it to be propelled through the vehicle during an accident causing injury, such as over or near an airbag.
- I DO NOT route the cable in a manner which would interfere with the operation of the vehicle controls.
- I Keep the MaxiRecorder dry, clean, free from oil/water or grease. Use a mild detergent on a clean cloth to clean the outside of the MaxiRecorder when necessary.

2. Tool Descriptions



1	Ring-pull	Used to unplug the MaxiRecorder from vehicle DLC.
2	Alarm Beep	Makes audible alarm when speed, acceleration, deceleration and braking thresholds are exceeded
3	LED Indicator	Shows communication status between the device and the vehicle.
4	Rear Label	Shows model information of the device.
5	USB Port	Connects the tool to a computer with the USB cable supplied to load trip data to your computer and to update the device.
6	OBDII Connector	Connects the tool to vehicle's DLC.

a) Product Specifications

Operating Temperature	-40°C to 85°C (-40°F to 185°F)
Storage Temperature	-20 to 70°C (-4 to 158 °F)
External Power	8 to 18 V provided via vehicle
Internal Power	Built-in rechargeable battery
Memory	2MB
Storage Capability	500 hours maximum (Dependent on sampling rate and environment)
Vehicle Interface	16-pin OBDII connector
Alarm	Audible alarm for exceeding speed, acceleration, and deceleration limits
Supported Protocols:	J1850-41.6, J1850-10.4, ISO9141, KWP2000 (ISO14230) and CAN (Control Area Network ISO15765/11898)
Data Sampling Rate	1, 5, 10, 20, 30 or 60 seconds
Dimensions	49mm (1.93") x 37mm (1.46") x 28mm (1.10")
NW	28g (0.062lb)
GW	190g (0.042lb)

b) Product Accessories

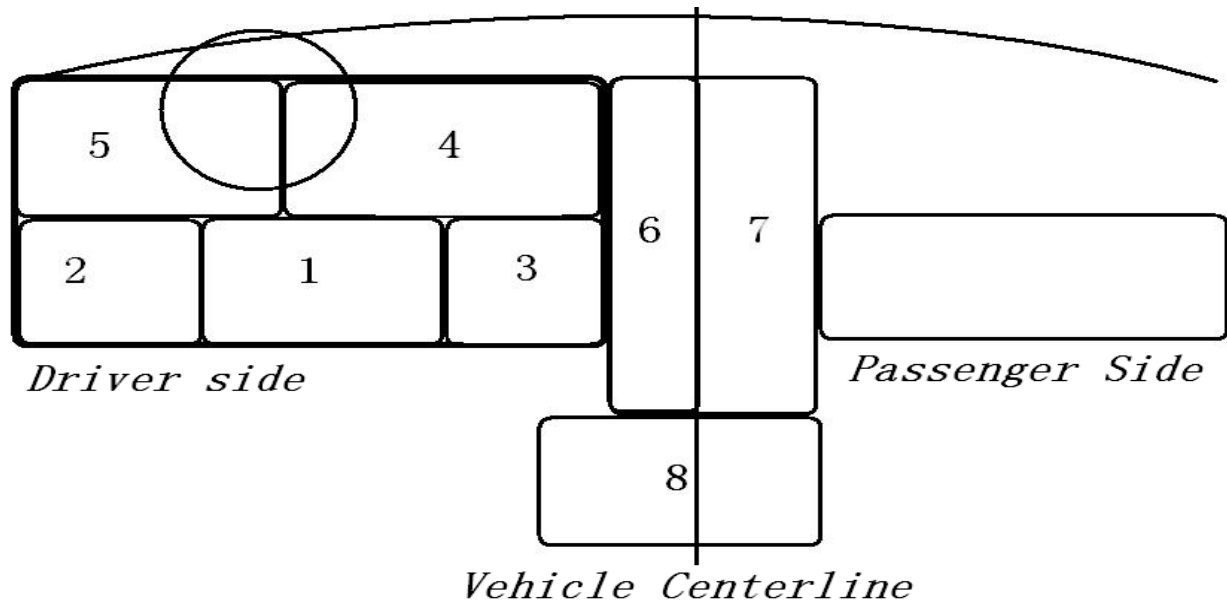
User's Manual	Instructions on tool operations
CD software	Contains user's manual, and trip data analysis software etc
USB cable	Used to connect the tool to a computer, so as to download trip records from the MaxiRecorder or update the tool.

3. MaxiRecorder Installation

In this section we offer operation instructions on how to connect the MaxiRecorder device to a vehicle, to a computer and how to install the MaxiRecorder software

Connecting MaxiRecorder Device to a Vehicle

- 1) Locate DLC (Data Link Connector or Diagnostic Link Connector) on your vehicle.
The DLC is usually located 12 inches under instrument panel (dash).



Explanation of Diagram Numbered Locations

Location	Description
1	Underneath dashboard, under the steering
2	Underneath dashboard, between the driver-side door and steering column area
3	Underneath dashboard, between the steering column area and the center console
4	Dashboard instrument/gauge area, between the steering column and center console
5	Dashboard instrument/gauge area, between the driver-side door and steering column
6	Center console, vertical surface (i.e., near radio and climate controls), left of/ on vehicle centerline
7	Center console, vertical surface right of vehicle centerline or on passenger side of center console.
8	Center console, horizontal surface (i.e., armrest, handbrake area), in front passenger area
9	Any location other than locations 1-8 (i.e., passenger area, passenger side glove box)

Note: For Asian and European vehicles, the DLC might locate behind the ashtray and the ashtray must be removed to access the connector. A plastic DLC cover may be found for some vehicles and you need to remove it before plugging the MaxiRecorder. If the DLC cannot be found, refer to the vehicle's service manual for the location.

- 2) Insert the MaxiRecorder into the vehicle's DLC.
- 3) Turn the ignition on.
- 4) MaxiRecorder will make a beep sound for the connection to the DLC correctly

- 5) The MaxiRecorder starts to communicate with the vehicle. At the mode of its default setting (when the LED indicator light is enabled), it will continuously blink. If the indicator is disabled, it will only blink once when connected to a vehicle DLC or a computer.

If the LED indicator does not blink:

- ü Make sure the indicator has been enabled via the MaxiRecorder software setting;
- ü Make sure the ignition is ON;
- ü Make sure the vehicle's DLC is not defective;
- ü Make sure the vehicle is OBDII compliant;
- ü Check if the MaxiRecorder is securely connected to the vehicle's DLC;
- ü Check if any of the MaxiRecorder's OBDII connector's pins is bent or damaged;
- ü Turn the ignition off, wait for about 10 seconds and turn it on again;
- ü If the MaxiRecorder still fails to communicate with the ECU, contact your local distributor

Installing MaxiRecorder Software

- 1) Place the MaxiRecorder Software CD to the CD-ROM drive.
- 2) The install program should run automatically.
If the program does not start, select **Run** from the **Start** menu, type D:\SETUP (or the correct letter for your CD ROM drive), and click **OK** to begin the installation
- 3) Follow the on-screen prompts to complete the installation.

Connecting MaxiRecorder Device to a Computer

- 1) Locate a free USB port on your computer.
- 2) Plug the MaxiRecorder device to the computer with a USB cable supplied, you should hear a beep sound indicates proper connection

Note: DO NOT connect the MaxiRecorder device to a computer when it still connecting to your vehicle. That may damage the device.

Downloading Trip Data

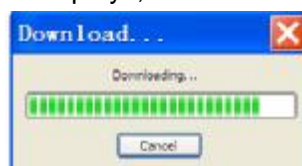
You are ready to download data from any of the MaxiRecorder models once the MaxiRecorder has been connected to your computer.



To download data, Click on the



The downloading Logs status dialog box displays, click **Cancel** to stop downloading.

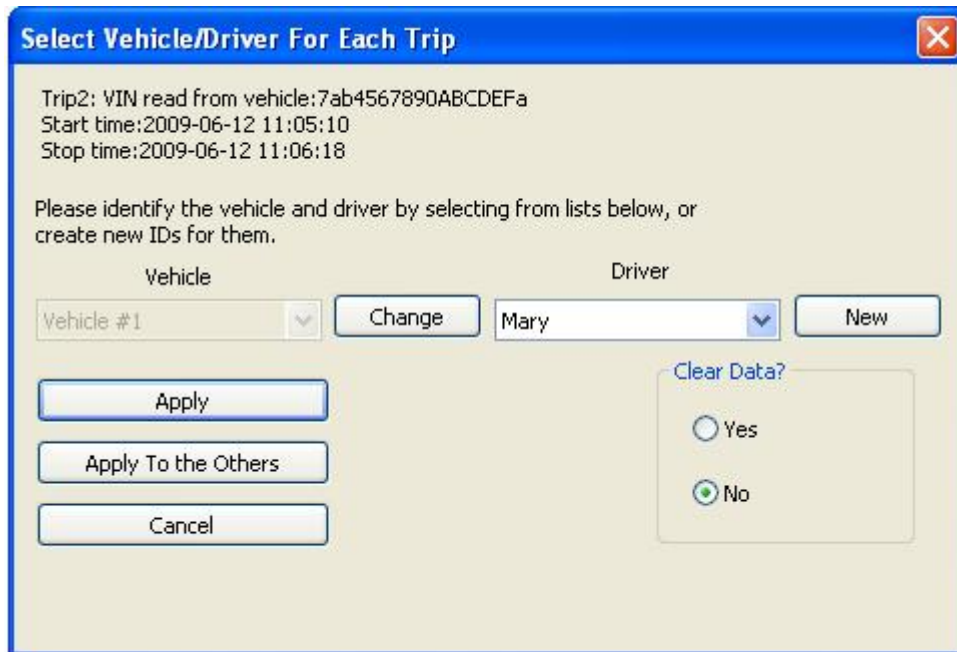


Vehicle/ Driver ID

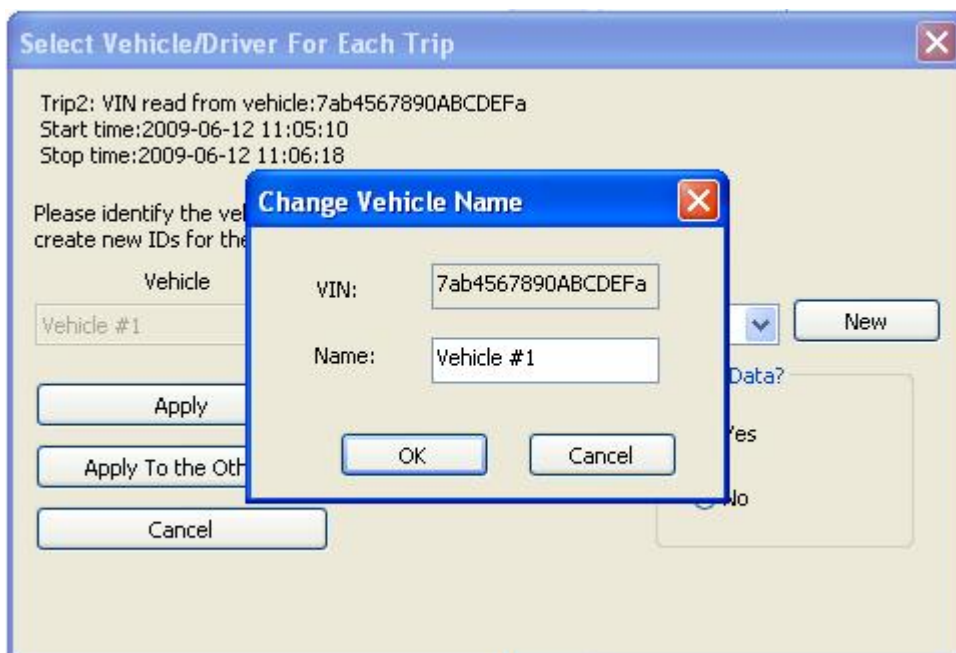
1) Vehicle ID

When the download is complete, the Downloading Logs dialog box closes and one of the following dialog boxes pop up:

- A. If the **VIN (Vehicle Identification Number)** is available, it will appear in the **Vehicle** pull down box automatically (Refer to the **Start time** and **Stop time** at the top of the dialog box), and click on **Change** (next to the Vehicle pull down box) to create a Name for the vehicle.



When **Change Vehicle Name** dialog box pops up, double click the Name box and create a new vehicle name.



- B. If VIN does not shows, click on **New** to add a Vehicle Name.

Select Vehicle/Driver For Each Trip

Trip1:
Start time:2009-06-09 09:20:51
Stop time:2009-06-09 09:31:07

Please identify the vehicle and driver by selecting from lists below, or create new IDs for them.

Vehicle: [Empty dropdown] [New] Driver: [Empty dropdown] [New]

[Apply] [Apply To the Others] [Cancel]

Clear Data?
 Yes
 No

Select Vehicle/Driver For Each Trip

Trip1:
Start time:2009-05-14 13:26:04
Stop time:2009-05-14 13:27:37

Please identify the vehicle and driver by selecting from lists below, or create new IDs for them.

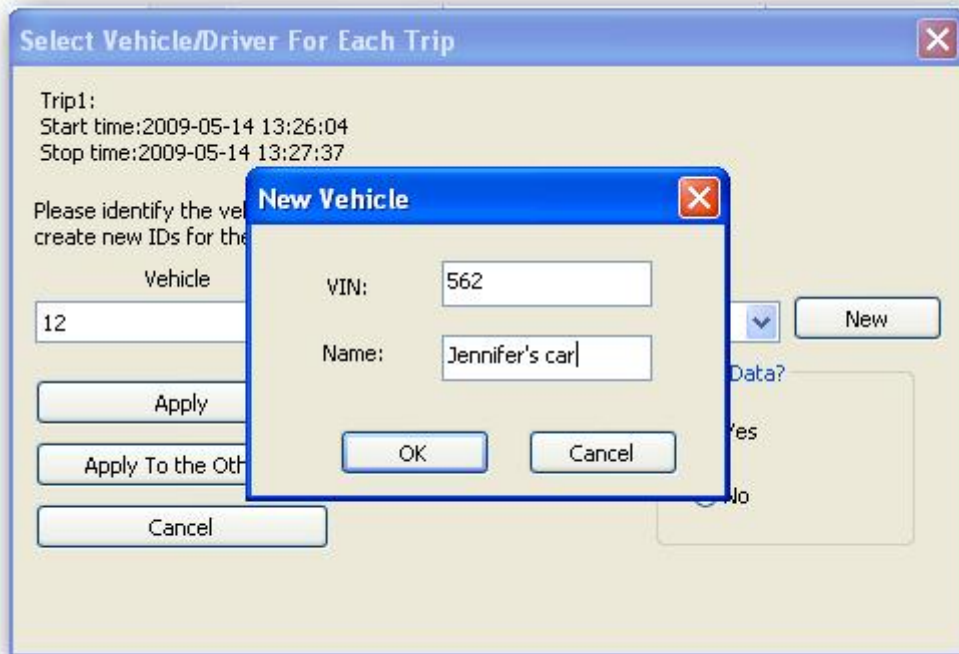
Vehicle: [12] [New] Driver: [23] [New]

[12]
Mary's Car
[Apply]

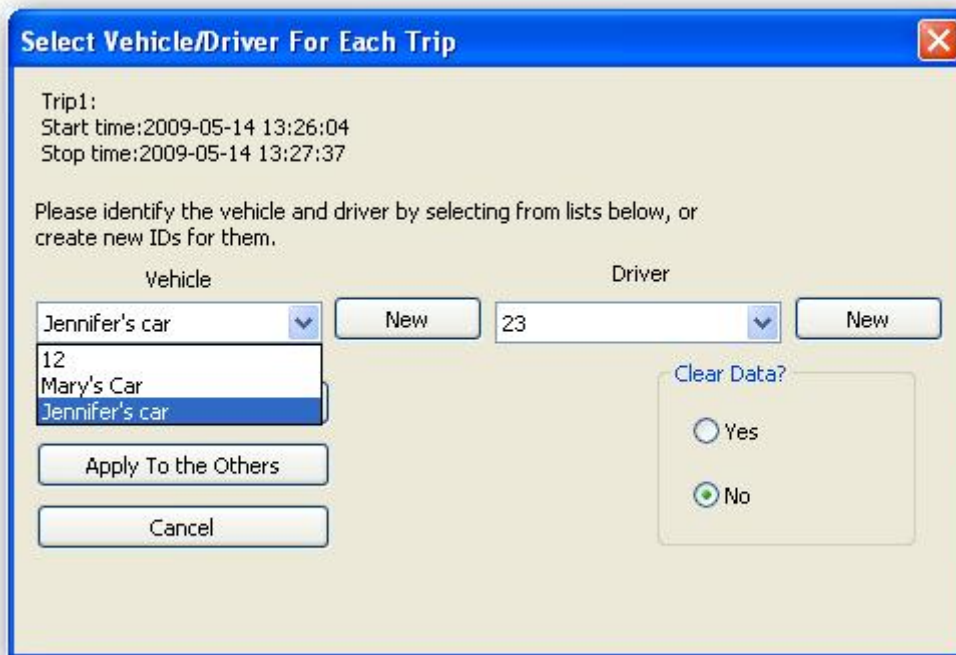
[Apply To the Others] [Cancel]

Clear Data?
 Yes
 No

The following dialog box shows when you click **New**, double click the VIN box/ Name box to edit. Click **OK** to save the changes, click **cancel** to exit without saving changes.



New Vehicle's name will be also displayed in the **Vehicle** pull-down dialog box.

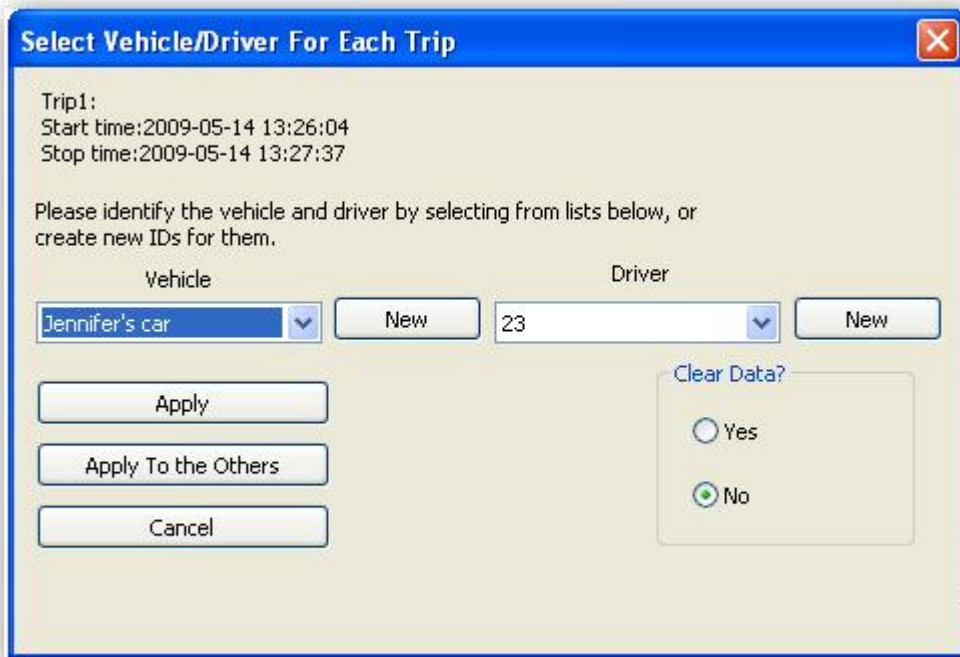


C. The following dialog boxes shows if there is no new data or data in the device.



2) **Drive ID**

Select a drive from the pull down Vehicle box, or click on **New** to add a new one. Finish the pop-up **Driver** dialog box. Click **Ok** and the new driver's name displays in the **Driver** box.



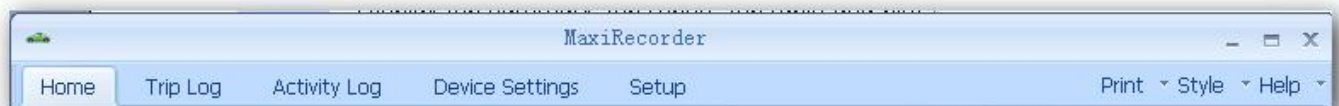
Note: the driver ID and Name should be unique. Please refer to [6.Setup - Setting IDs](#) for more detail information. (Page 15)

- 3) Click **Yes** to clear the previous recorded data in your device or click **No** to remain.
- 4) Click **Apply** to associate the selected vehicle and driver for the current trip data.
Click **Apply To the Others** to associate the rest of the vehicle and driver.
Click **Cancel** if you do not want to save the data to your computer before the process finishes.

Once you have finished associating certain vehicles and drivers with the downloaded trip data, the Trip Log summary view will automatically display the downloaded data.

4. Toolbar

The Toolbar provides quick access to the MaxiRecorder software commands.



Home - Display log summary, detailed view (I/M Readiness status, trip Parameter summaries, trip Troubles, and Exception Time), and Fuel Entry option, Download Data File option and Delete All option.

Trip Log - Display trip summary, trip report, trip table and plot.

Activity Log - Display activity log summary.

Device Settings - Display device version and memory space information, setup options including clock set, threshold set, device software update, etc.

Note: The setup options are not available until the MaxiRecorder is connected to the computer.

Setup

- Display various MaxiRecorder's setup options, including device ID, driver ID, vehicle ID, units, parameter thresholds, work time and idle time band.

Print

- Print current displayed page.

Style

- Support different interface colors.

Help

- Open the MaxiRecorder help file.

5. MaxiRecorder Home Page



Downloading Trip Data



is used to load recorded trip data from the MaxiRecorder to your computer. **Please refer to 3. MaxiRecorder Installation - Downloading Trip Data. (Page 4)**

Deleting Trip Data



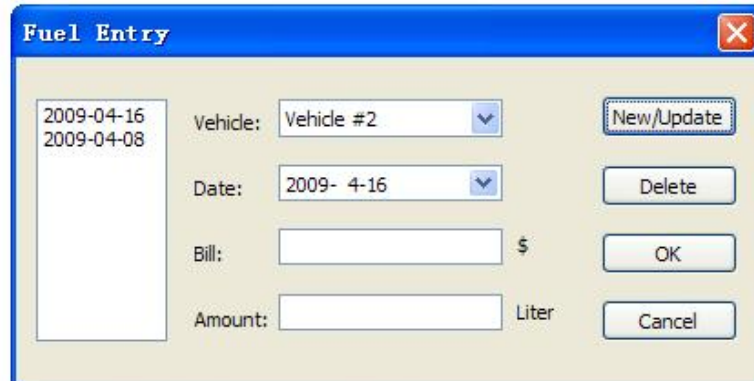
Click on the main menu, a warning dialog box shows asking for your confirmation, click **Yes** to confirm the deleting, click **No** or **Cancel** to exit without deleting.



Fuel Entry



The Fuel Entry dialog box shows the fuel usage and fuel costs of each vehicle you used. It is used to calculate the fuel efficiency and fuel expense. You will find it from the summarized trip data in the MaxiRecorder Home Page.



1. To Add a New Fuel Entry

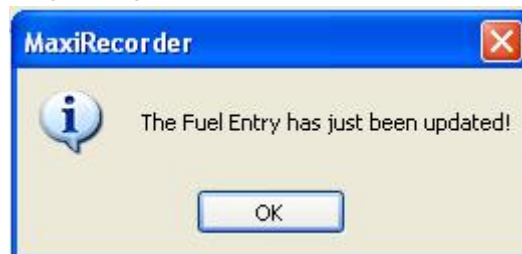


- 1) Click on the Fuel Entry icon from the Home Page, the Fuel Entry dialog box displays.
- 2) Select the vehicle from the pull down Vehicle box.
- 3) Select the date that fuel was purchased from the Date box. The selected date must be no later than the current date.
- 4) Enter the amount of fuel purchased in the Amount box.
- 5) Click New/Update and then click OK to save the fuel entry information and finally close the dialog box, or just click OK or Cancel to close the Fuel Entry dialog box without saving changes.

Note: The software supports one Fuel Entry per day only.

2. To Edit an Existing Fuel Entry

- 1) Select a date from the Fuel Entry list box by clicking the left mouse button once.
- 2) Change the Date, Bill, and Amount as you want.
- 3) Click New/Update and then click OK to save the changes and exit, or click OK or Cancel to close the Fuel Entry dialog box without saving changes.

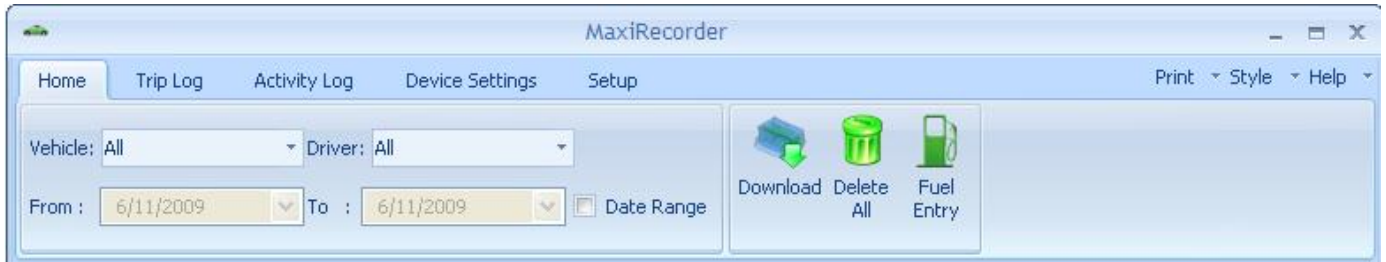


3. To Delete an Existing Fuel Entry

Select a date from the Fuel Entry dialog box, click Delete and a warning dialog box shows. Click Yes to confirm the command, or click No or Cancel to exit without deleting.



Overall Summarized Trip log



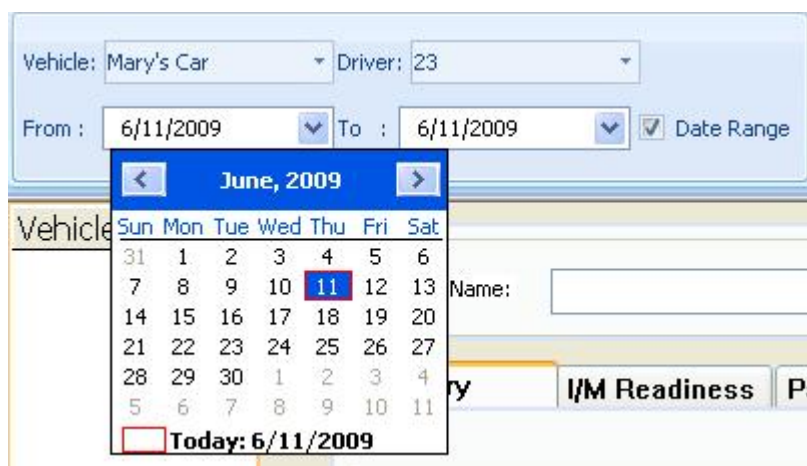
The MaxiRecorder Home Page shows recorded data. This page leads to the overall summarized log arranged in vehicle sequence. You can also find summary log for each vehicle and driver listed in the pull down box.

To view vehicle, click and select the vehicle from the pull down box.

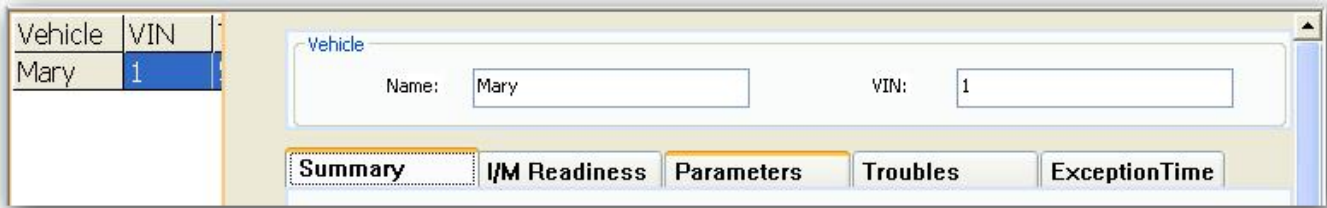
To view driver, click and select the driver from the pull down box.

Summarizes data by date range

To active the date range, simply tick the Date Range box and select the dates **From** and **To** on the pull down calendar.



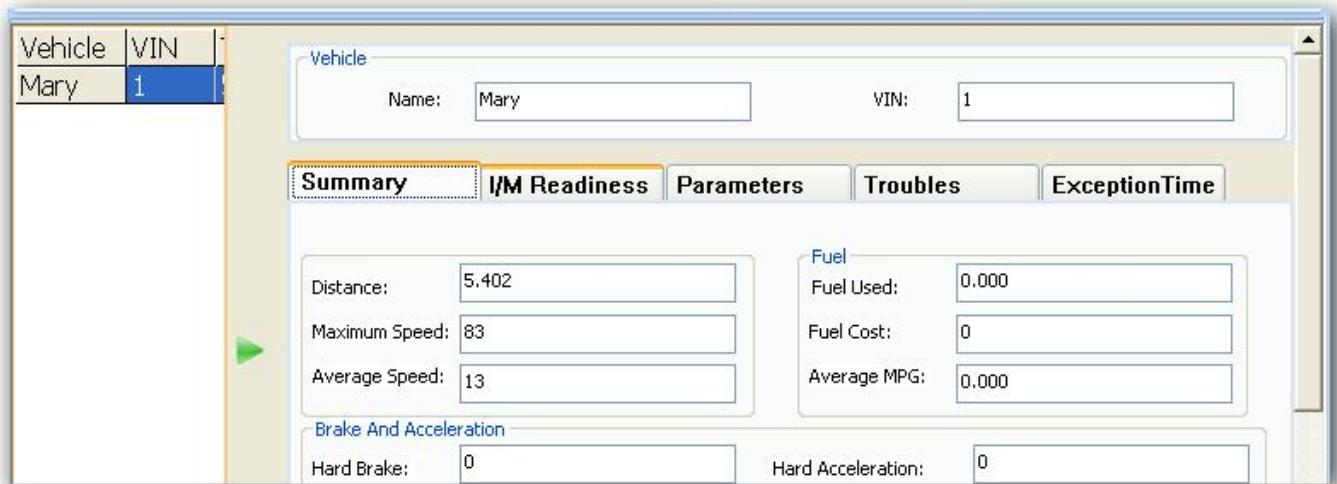
Detailed View



Summary

Summary provides an intuitive view on the recorded trip data under the selected vehicle, including distance, fuel, acceleration, speed, idle time and so on.

Note: Click on  to hide the Detailed View dialog box, or click  to display the Detail View dialog box.



I/M Readiness

Show how the Emission System operates on OBD2 compliant vehicles. It is used to inspect vehicle to compliance to the state emissions program. The dialog box shows the last recorded status of the twelve possible emission readiness codes for the selected vehicle in the MaxiRecorder Database.

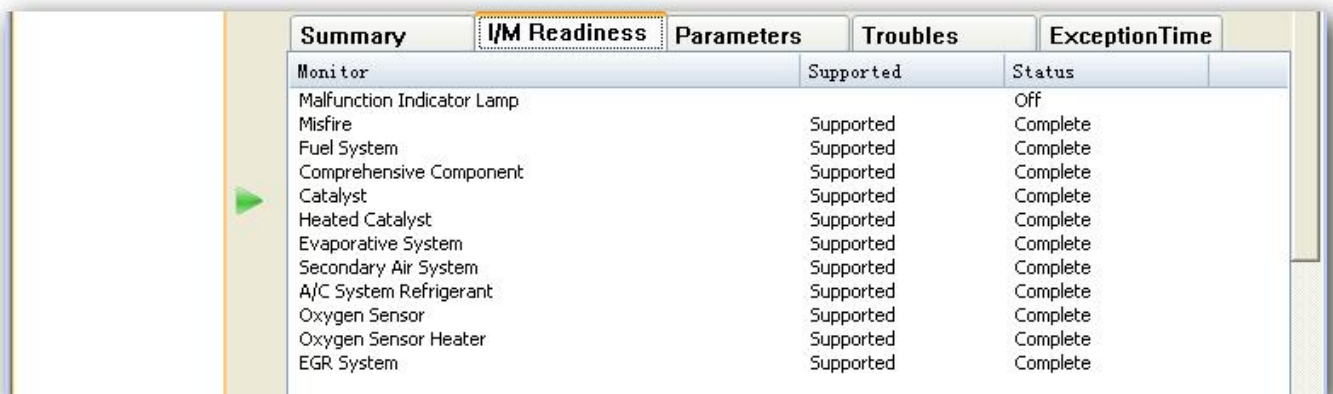


Table Row	Description
Malfunction Indicator Lamp	-
Misfire	Misfire monitor
Fuel System	Fuel System Monitor
Comprehensive Component	Comprehensive Components Monitor
Catalyst	Catalyst Monitor
Heated Catalyst	Heated Catalyst Monitor
Evaporative System	Evaporative System Monitor
Secondary Air System	Secondary Air Monitor
A/C System Refrigerant	-
Oxygen Sensor	O2 Sensors Monitor
Oxygen Sensor Heater	O2 Sensors Heater Monitor
EGR System	EGR System Monitor

Not all the twelve monitors are supported in your vehicle. **Not Supported** indicates that a particular monitor does not exist. Refer to your vehicle's manual for more information about the emission monitors. **Off** indicates that the MIL function is shut down.

In the **Status** column, **Complete** means that the test of a supported monitor is complete at the time of MaxiRecorder recorded the readiness codes. While **Not Complete** means that the test of a supported monitor has not yet been completed or failed at the recording time.

Parameters

Display information of the parameters (up to 23 items) pre-selected to trace in the Device Settings.



Summary	I/M Readiness	Parameters	Troubles	ExceptionTime
Parameter	Threshold	Time Over Thres...	Max Above Th...	T
Vehicle Speed	114KPH	00:00:00	---	0
Coolant Temp	95°C	00:02:05	215°C	0
Engine Load	80.0%	00:10:25	100.0%	0
Intake Air	-17°C	01:39:04	215°C	0
Throttle Position	60.0%	00:07:30	100.0%	0


Troubles

Provide an intuitive view on the trouble code, type, detected time and description.

Vehicle

Name: VIN:

Summary	I/M Readiness	Parameters	DTC	ExceptionTime
Code	Type	Time	Description	
P0001	Stored	2009-07-02 09:57:19	Fuel Volume Regulator Control Circuit / Open	
P0002	Stored	2009-07-02 09:57:19	Fuel Volume Regulator Control Circuit Range / Performance	
P0001	Stored	2009-07-02 10:02:13	Fuel Volume Regulator Control Circuit / Open	
P0002	Stored	2009-07-02 10:02:13	Fuel Volume Regulator Control Circuit Range / Performance	
P0101	Stored	2009-07-07 11:33:13	Mass or Volume Air Flow A Circuit Range / Performance	
P0201	Stored	2009-07-07 11:33:13	Injector Circuit / Open Cylinder 1	
 C1754	Stored	2009-07-07 11:33:13	Manufacturer specific codes, please refer to the user's manual!	
P3532	Stored	2009-07-07 11:33:13	DTC definitions not found! Please refer to vehicle service manual!	
C1832	Stored	2009-07-07 11:33:13	Manufacturer specific codes, please refer to the user's manual!	
P3700	Stored	2009-07-07 11:33:13	DTC definitions not found! Please refer to vehicle service manual!	
P0112	Stored	2009-07-07 11:33:13	Intake Air Temperature Sensor 1 Circuit Low	
P2334	Stored	2009-07-07 11:33:13	Ignition Coil L Primary Control Circuit High	
 P0010	Stored	2009-07-07 11:34:43	A Camshaft Position Actuator Circuit / Open Bank 1	
P0011	Stored	2009-07-07 11:34:43	A Camshaft Position Timing Over - Advanced or System Performance Ba	

Click on  (If there is any) to view the Freeze Frame – Parameter and Value.

Freeze Frame -- Trouble Code: P0010

Parameter	Value
Fuel System Status	--/CL-Fault
Engine Load	100.0%
Engine Coolant Temperature	215°C
S Term Fuel Trim(B1/3)	99.2%/-100.0%
L Term Fuel Trim(B1/3)	0.0%/-100.0%
S Term Fuel Trim(B2/4)	-100.0%/99.2%
L Term Fuel Trim(B2/4)	-100.0%/0.0%
Fuel Pressure	765kpa
Intake Manifold	255kpa
Engine Speed	16384RPM
Vehicle Speed	1KPH
Ignition Timing	-64°
Intake Air Temperature	-39°C
Air Flow Rate	3.43g/s
Throttle Position	0.4%
O2 Voltage (B1,S1)	1.275V
O2 Voltage (B1,S2)	1.275V
O2 Voltage (B2,S1)	0.000V
O2 Voltage (B2,S2)	0.000V
O2 Voltage (B3,S1)	1.275V
O2 Voltage (B3,S2)	0.000V

OK

Exception Time

Displays the time when the vehicle was used out of the given period. Refer to **6. Setup-Set Work Time** for how to set up work time. (Page 21)

Summary	I/M Readiness	Parameters	Troubles	ExceptionTime
Start Time	Stop Time	Type		
2009-05-14 13:18:11	2009-05-14 13:18:24	After hour		
2009-05-18 13:28:19	2009-05-18 13:28:26	After hour		
2009-05-18 13:28:37	2009-05-18 13:29:09	After hour		
2009-05-18 13:29:14	2009-05-18 13:29:18	After hour		
2009-05-18 13:29:55	2009-05-18 13:30:00	After hour		
2009-05-18 19:50:40	2009-05-18 19:51:37	After hour		
2009-05-18 19:52:02	2009-05-18 19:52:07	After hour		
2009-05-18 19:52:23	2009-05-18 19:52:29	After hour		

6. Setup



The **Setup** is used to configure various aspects of the MaxiRecorder software, including ID setting, how the data is displayed and so on.

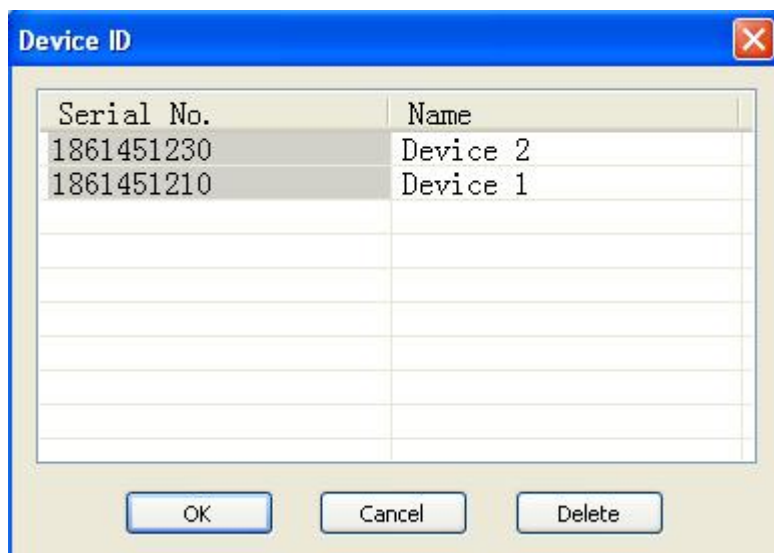
Device ID

Device ID shows the data of the users that have logged trips on the MaxiRecorder data logger, including serial No. and user name. The No and name are allowed to add, edit or delete in the **Device ID** dialog box.

To View Device ID(s)



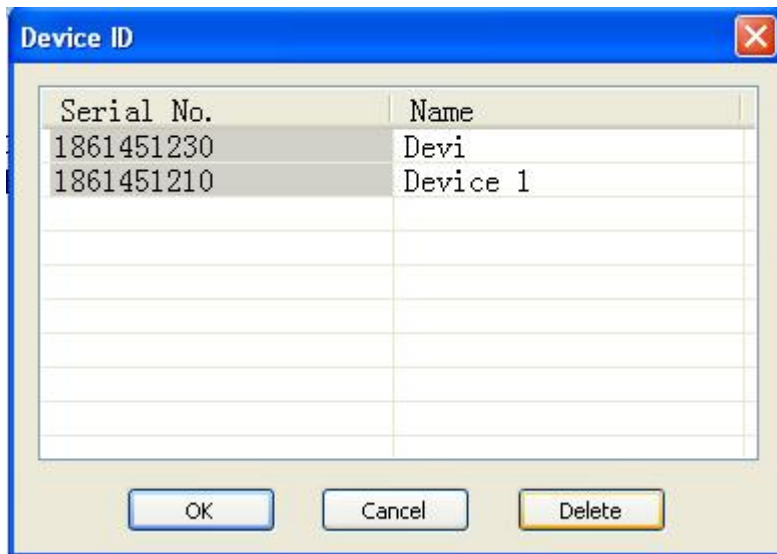
- 1) Select **Setup** from the toolbar and then click on
- 2) Recorded ID(s) are listed as below:



- 3) Use the scroll bar to view additional device IDs when necessary.

To Edit Device ID(s)

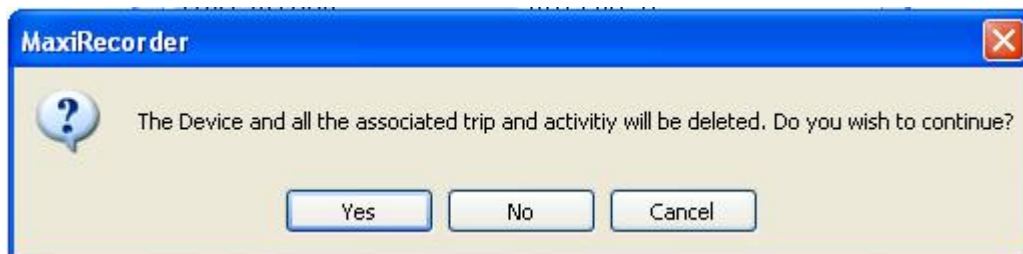
- 1) Double-click the Name field on the **Device ID** dialog box.



- 2) Edit the MaxiRecorder's name.
- 3) Click **OK** to confirm the changes or click **Cancel** to exit without saving changes.

To Delete an Existing Device ID, all the associated trips and activities

- 1) Select the name from the Device ID table and click **Delete**.
Click **Yes** to delete, click **No** to exit without deleting or click **Cancel** to exit the dialog box.



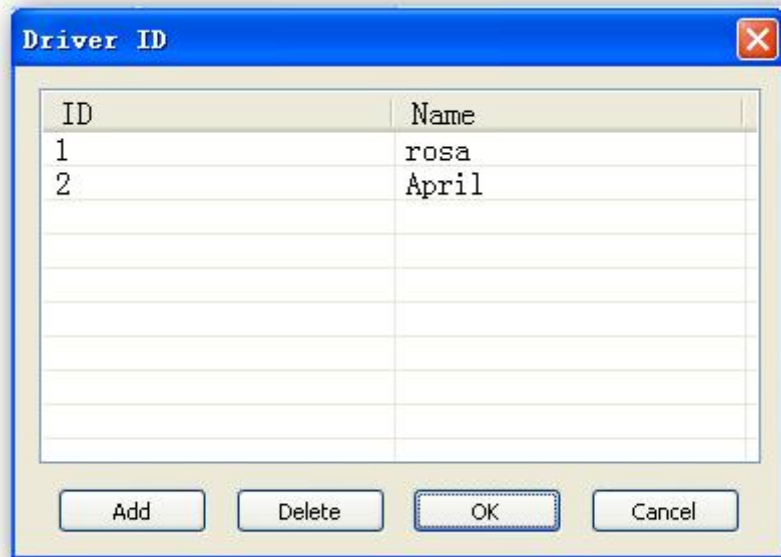
Driver ID

The **Driver ID** shows a list of drivers who have logged trip on the MaxiRecorder data logger. Users can add, delete, and edit driver IDs. The driver IDs are used to associate a driver with trip information.

To View Driver ID



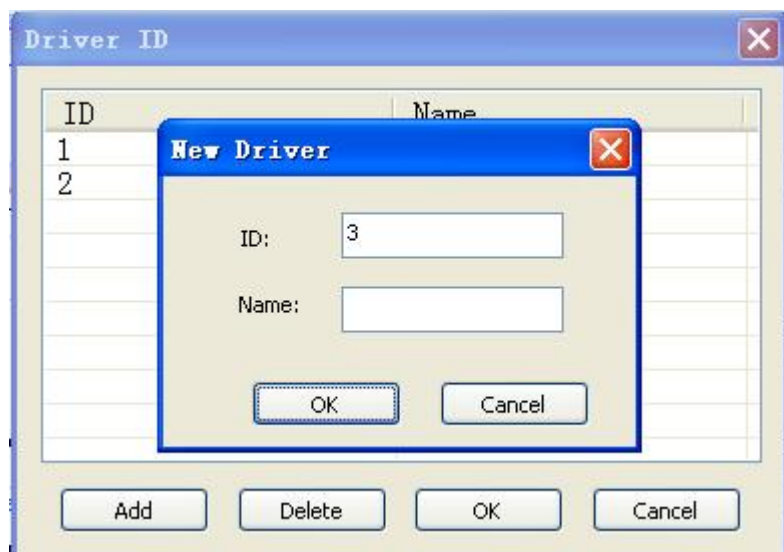
- 1) Select **Setup** from the toolbar and then click the **Driver ID**.
- 2) Available driver ID(s) are listed as below:



- 3) Use the scroll bar to view additional driver IDs when necessary.

To Add a New Driver ID

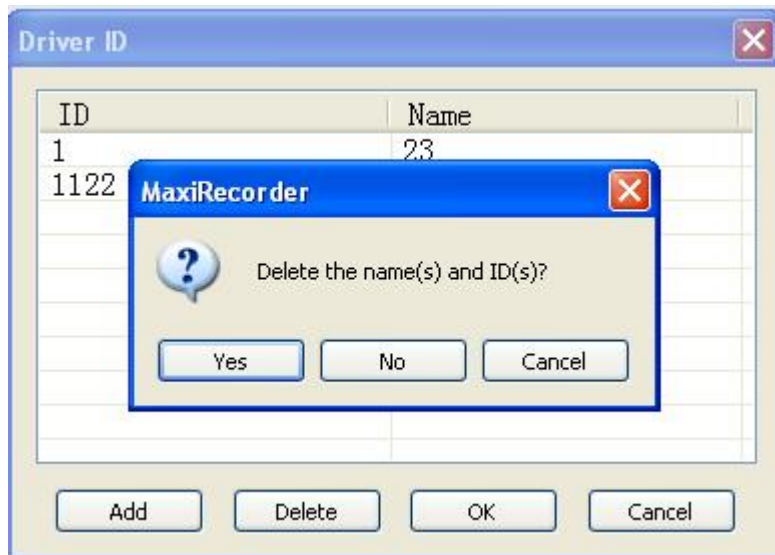
- 1) Click **Add** and a dialog box shows:



- 2) Enter a unique driver name and ID and click **OK** to add the ID, or click **Cancel** to exit without saving changes.

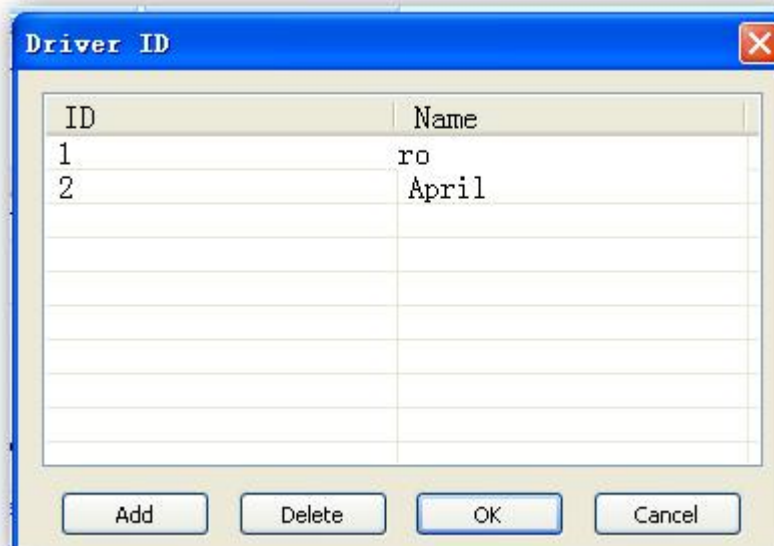
To Delete an Existing Driver ID

- 2) Select the driver name from the Driver ID table and click **Delete**.
- 3) Click **Yes** to delete the driver ID, click **No** to exit without deleting or click **Cancel** to exit the dialog box.



To Edit Existing Driver Information

- 1) Double-click the driver name that you want to change on the Name field.
- 2) Edit the driver name.



- 3) Click **OK** to save changes, or click **Cancel** to exit without saving changes.

Note: You can not edit the ID field for the Driver IDs. If you would like to change the ID of an existing driver, delete the driver ID and add a new one.

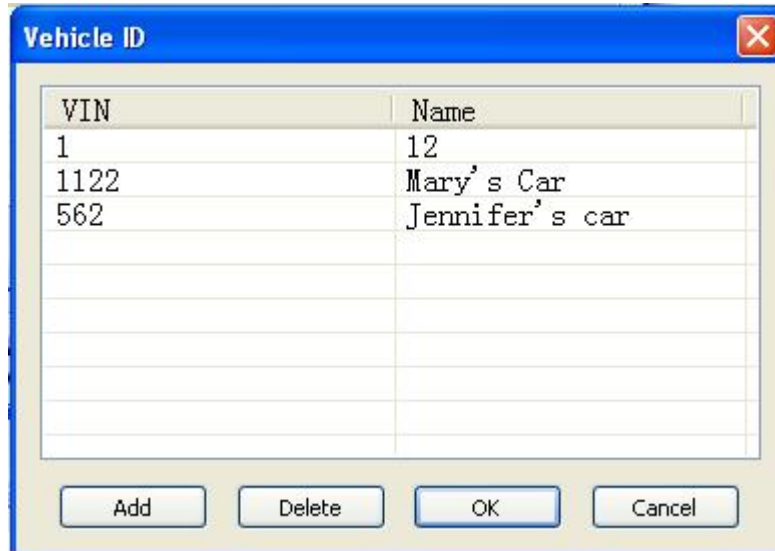
Vehicle ID

The **Vehicle ID** shows the list of vehicles who have logged trip on the MaxiRecorder data logger. Users can add, delete, and edit vehicle IDs. The vehicle IDs are used to associate a vehicle with trip information.

To View Vehicle IDs



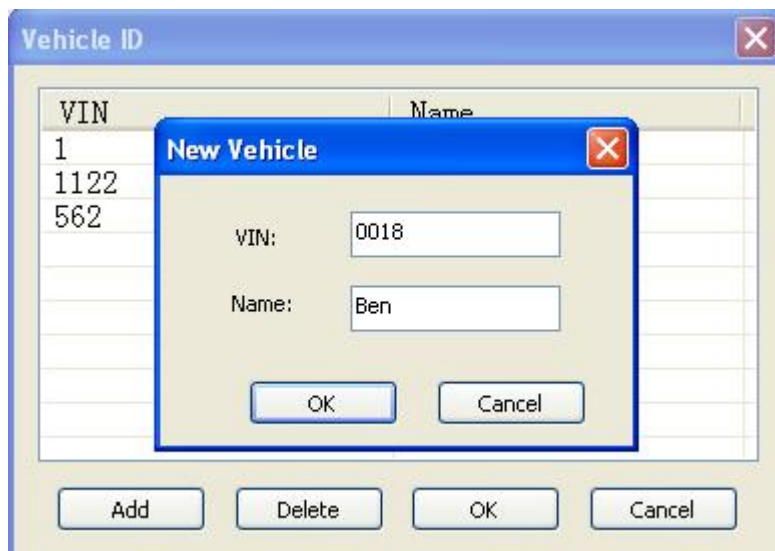
- 1) Select **Setup** from the toolbar and then click **Vehicle ID**.
- 2) Available vehicle IDs are listed as below:



- 3) Use the scroll bar to view additional vehicle IDs when necessary.

To Add a New Vehicle ID

- 1) Click **Add** and the Vehicle ID dialog box shows as below:



- 2) Enter a unique vehicle manufacturer, model or the vehicle's VIN number in the **VIN** box.
- 3) Enter a unique vehicle name in the **Name** box.
- 4) Click **OK** to add the vehicle ID, or click **Cancel** to exit without saving the changes.

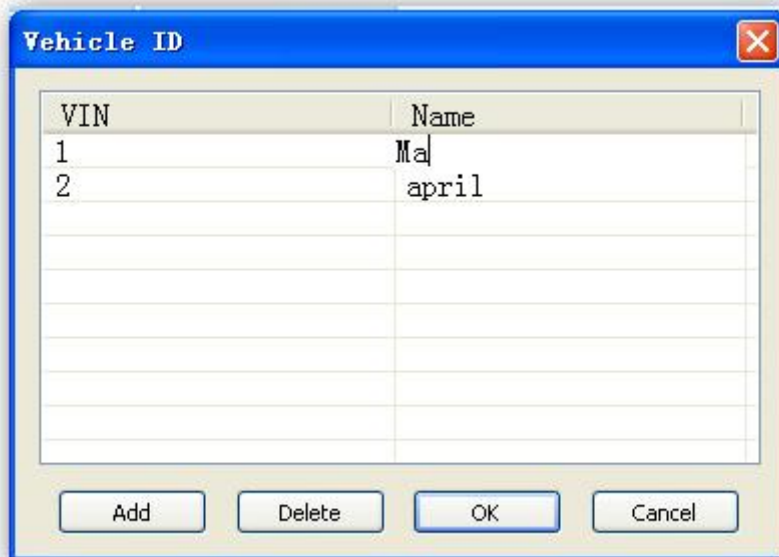
To Delete an Existing Vehicle ID

- 1) Select a vehicle from the Vehicle ID table and click **Delete**.
- 2) Click **Yes** to delete the vehicle ID, click **No** to exit without deleting or click **Cancel** to exit the dialog box.



To Edit Existing Vehicle Information

- 1) Double-click the Name field from the Vehicle ID dialog box for the vehicle you want to change.
- 2) Edit the vehicle name.
- 3) Click **OK** to accept the changes, or click **Cancel** to exit without saving changes.



Note: You can not edit the VIN field for the vehicle IDs. If you would like to change the vehicle ID of an existing driver, delete the vehicle ID and add a new one.

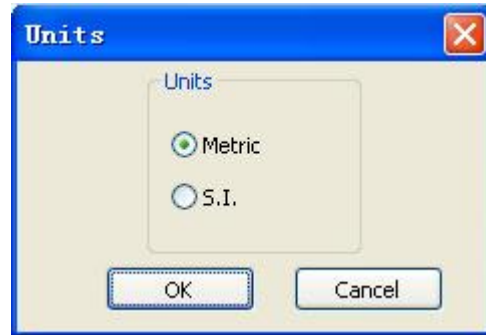
Setting Unit of Measure



The **En & Me Units** is used to change unit of measure between S.I. and Metric.



- 1) To change unit of measure, select **Setup** from the toolbar and then click
- 2) Select the unit of measure.



- 3) Click **OK** to accept your changes, or click **Cancel** to exit without saving changes.

Setting Parameter Thresholds



The **Parameter Thresholds** is used to create thresholds for certain parameters of your vehicle's activities that the MaxiRecorder monitor.

Parameters monitored by the MaxiRecorder are as follows:

- 1) Select **Setup** from the toolbar and then click **Parameter Thresholds**.
- 2) Set the maximum threshold as you want for each parameter.

Parameters Threshold

Name	Threshold		Name	Threshold	
Vehicle Speed	114	KPH	L Term Fuel Trim(B1/3)	0.0	%
Engine Speed	4020	RPM	L Term Fuel Trim(B2/4)	0.0	%
Throttle Position	60.0	%	O2 Voltage (B1,S1)/(B1,S1)	0.000	V
Engine Coolant Temperature	95	°C	O2 Voltage (B1,S2)/(B1,S2)	0.000	V
Engine Load	80.0	%	O2 Voltage (B1,S3)/(B2,S1)	0.000	V
Intake Manifold Pressure	0	kpa	O2 Voltage (B1,S4)/(B2,S2)	0.000	V
Air Flow Rate	0.00	g/s	O2 Voltage (B2,S1)/(B3,S1)	0.000	V
Intake Air Temperature	-17	°C	O2 Voltage (B2,S2)/(B3,S2)	0.000	V
Ignition Timing	0	°	O2 Voltage (B2,S3)/(B4,S1)	0.000	V
Fuel Pressure	0	kpa	O2 Voltage (B2,S4)/(B4,S2)	0.000	V
S Term Fuel Trim(B1/3)	0.0	%	Battery Voltage	12.000	V
S Term Fuel Trim(B2/4)	0.0	%			

OK Default Cancel

- 3) Click **OK** to save the threshold changes, click **Cancel** to exit without saving changes, or click **Default** to shows the default parameter threshold values and click **OK** to save the default settings.

Note: The maximum threshold is the value that a vehicle can operate safely under each parameter. The thresholds should be set based on your vehicle's specifications. Consult your vehicle's manual for maximum threshold settings.

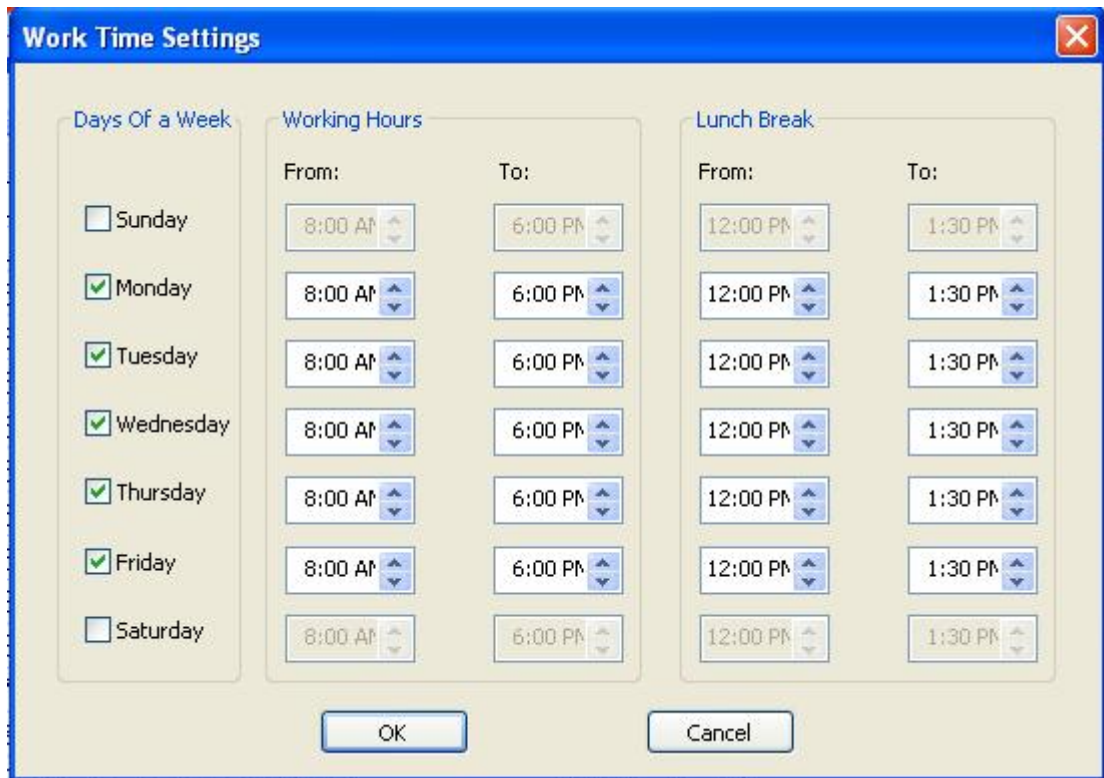
Setting Work Time



Work time setting helps you find out if your car is used out of the given period.



- 1) Select **Setup** from the toolbar and then click on **Set Work Time**.
- 2) Set the work time as you want in the dialog box:



- 3) Click **Ok** to save your changes, or click **Cancel** to exit without saving.

Setting Idle Time Band



The **Idle Time Band** is used to count the minutes and times when vehicle temporarily stops with engine on, for example, stops at a traffic light. The **Long Idle Time** (Longer than the idle time band) and **Short Idle Time** (shorter than the idle time band) will be shown in **Idle** from **MaxiRecorder Home page**.

To set an Idle Time Band,

- 1) Select **Setup** from the toolbar and then click the **Set Idle Time Band**.
- 2) Set an **Idle Time Band** as you want in the pop-up dialog box:



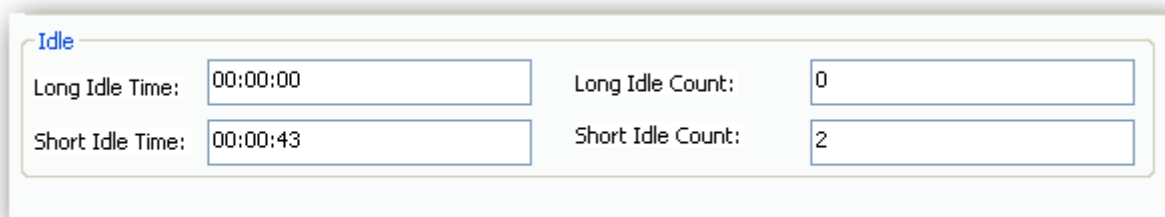
3) Click **Ok** to save your changes, or click **Cancel** to exit without saving changes.

Example

Set the Idle Time Band as **120 S**,



The Idle Time Band shows,



Long Idle Time: 00:00:00 Indicates there is no temporarily stop (with engine on) that longer than 120 Seconds, Short Idle Time: 00:00:43 indicates the vehicle temporarily stop twice and 00:00:43 is the stopping time in total.

7. Device Settings

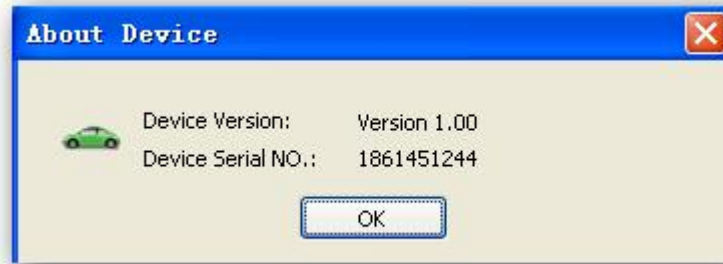


The **Device Setup** is used to set up the MaxiRecorder's functions. To enable these functions, you need to connect a MaxiRecorder to your computer.

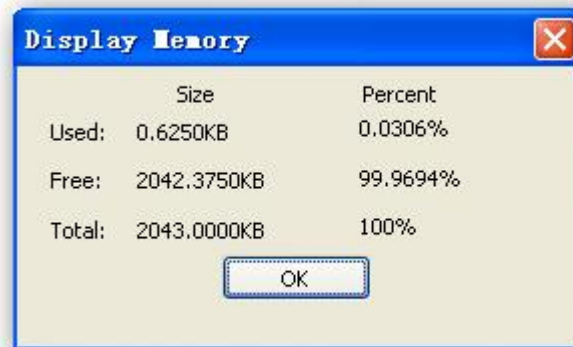
Device Version

The **Device Version** shows device software version and device serial NO.

- 1) To view device software version, click **Device Settings** and then click **Device Version**. A box pops up shows the device version and serial No. Click **OK** to exit.



- 2) To view the device memory, click **Device Settings** and then click **Display Memory**. Click **OK** to exit.



- 3) To clear device memory, click **Device Settings** and then click **Clear Memory**. A warning message shows and asks your confirmation, click **Yes** to clear the MaxiRecorder memory, click **No** to exit without clearing the memory, or click **Cancel** to exit the dialog box.





Updating Device Software

The **Update Device Software** is used to update the MaxiRecorder.


- 1) To update device software, download the latest update file from our website www.auteltech.com and save it in your computer.
- 2) Connect a MaxiRecorder to your computer with the USB cable supplied.
- 3) Click on **Update Device Software**.

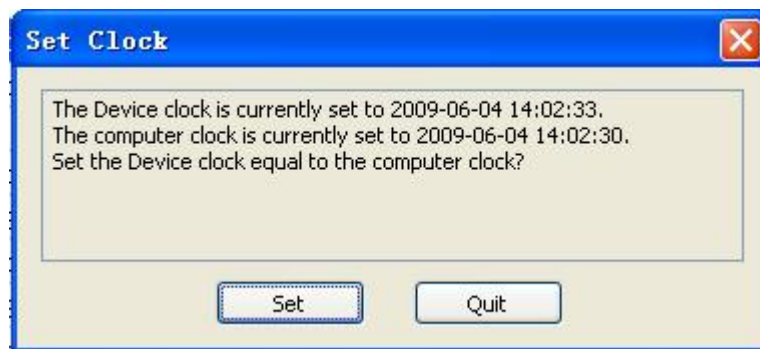


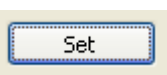
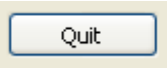
- 4) Click on  to locate the update file which saved in your computer.
- 5) Click on  start to update.

Set the Device Clock

Set the Device Clock is used to set a device's internal clock to match the time on your computer.

- 1) To set the device clock, select .

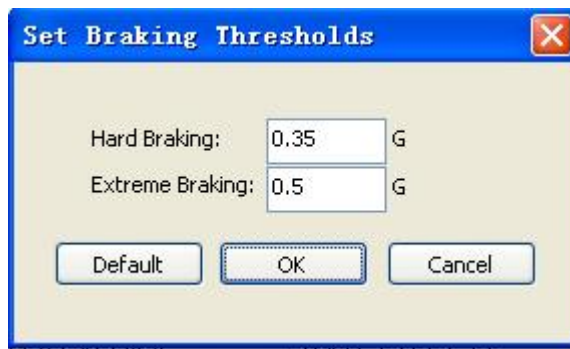


- 2) Click  to set the clock on the MaxiRecorder to match the time on your computer, or click  to exit without saving the changes.

Setting Braking Thresholds

The **Set Braking Thresholds** is used to configure the deceleration rates (hard and extreme breaking in your vehicle). It shows in the Log Summary and Trip Report each time the vehicle braking threshold exceeds the set limits,

- 1) Click on  to set Braking Thresholds.



- 2) Enter your desired hard and extreme braking thresholds or click **Default** to use the software default threshold settings. The default braking thresholds are: 0.35(3.4 m/s²) and 0.50 G (4.9 m/s²).
- 3) Click **OK** to save the new settings, or click **Cancel** to exit without saving changes.

Note: The device will beep 1HZ/S when the hard braking threshold is over the limit, and beep twice when extreme braking threshold is over. If the exceed-circumstance continues, the device alarm beeps at a frequency of 1Hz/s for hard braking threshold, and at a frequency of 3Hz/s for extreme braking threshold.

Setting Acceleration Thresholds

The **Set Acceleration Thresholds** is used to set the rates of acceleration that determine hard acceleration and extreme acceleration. These thresholds help you to monitor how hard the vehicle is being accelerated. Any time the car's acceleration exceeds these limits, the event is logged in the Log Summary and the Trip Report. To set acceleration Thresholds,

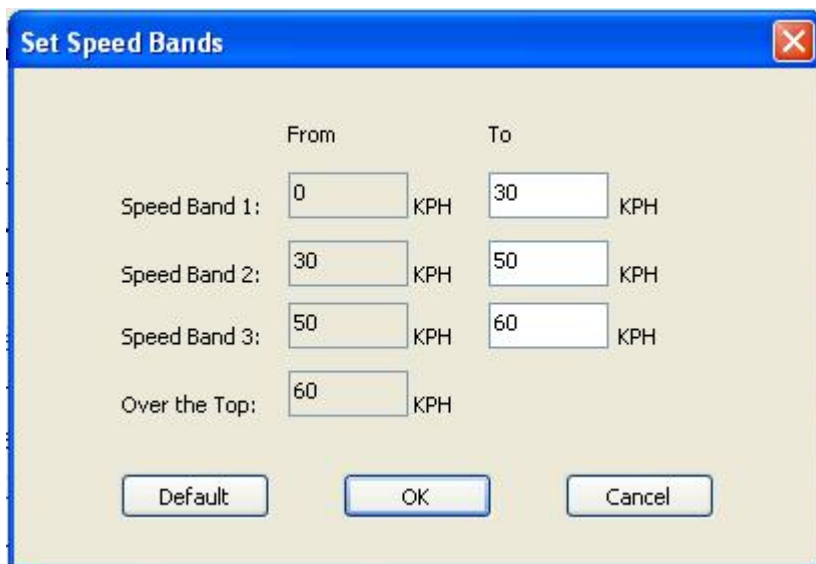
- 1) Select **Set Acceleration Thresholds** from the **Device Setup** menu.
- 2) Enter your desired hard and extreme acceleration thresholds or click **Default** to use the default threshold settings. The Default acceleration thresholds are: 0.30 (2.9 m/s²) and 0.45 G (4.4 m/s²).
- 3) Click **OK** to save the new settings, or click **Cancel** to exit without saving changes.

Note: The device will beep once when the hard acceleration threshold reaches the limit and beep twice when extreme acceleration threshold reaches the limit. If the exceed-circumstance continues, the device alarm beeps at a frequency of 1Hz/s for hard acceleration threshold, and at a frequency of 3Hz/s for extreme acceleration threshold.

Setting Speed Bands

The **Set Speed Bands** is used to set speed limits to help you monitor the speed when you drive. Time spent in each speed band will be identified, and be shown on the Log Summary and the Trip Report. To set Speed Bands,

- 1) Select **Set Speed Bands** from the **Device Setup** menu.



2) Enter the maximum threshold speed for each of the first speed bands, the fourth speed should consist of all speeds greater than the last threshold, or click **Default** to use the software default threshold settings.

3) Click **OK** to save the new speed band settings. Click **Cancel** to exit without saving changes.

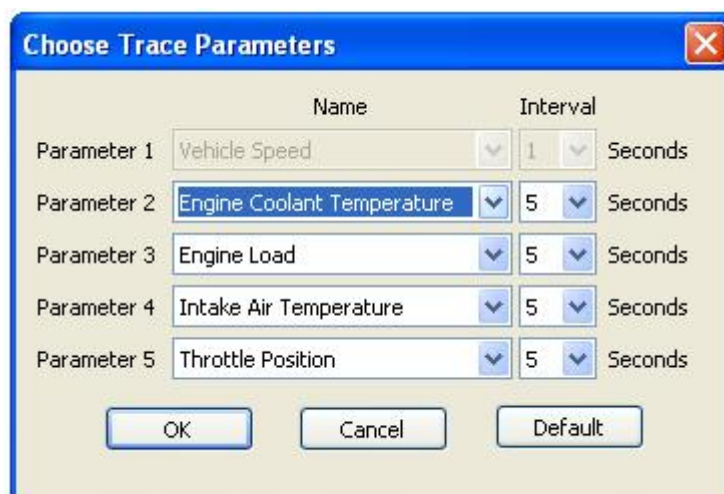
Note: The speed threshold displayed in the first speed band is the threshold that triggers the audible alarm, which beeps at a frequency of 1Hz/s until the vehicle is no longer over speed.

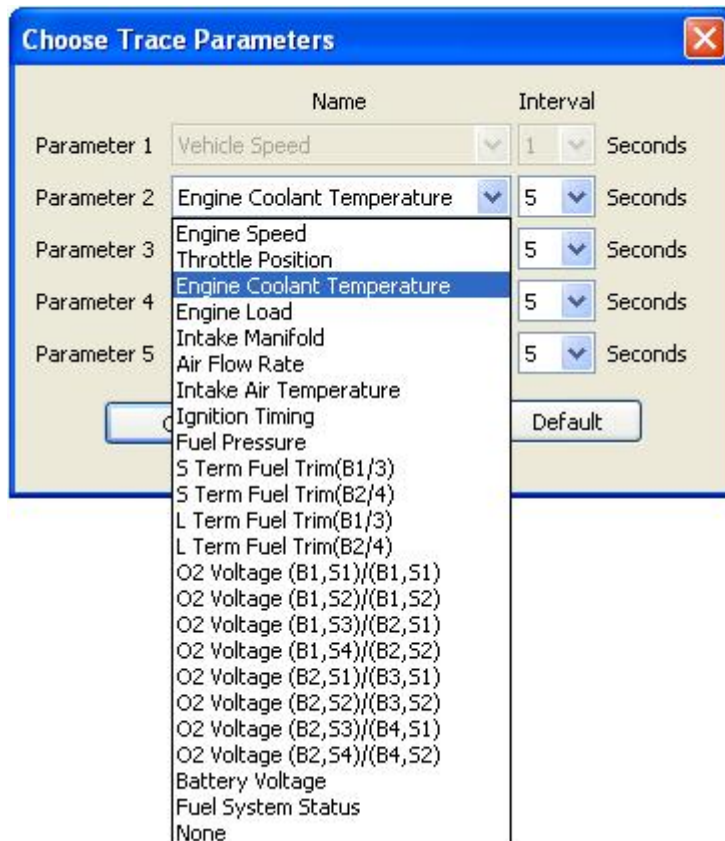
4) Click **Default** for default setting.

Setting Trace Parameters

The **Choose Trace Parameters** is used to select up to four additional vehicle data parameters to be recorded in addition to vehicle speed and allows user to choose the sampling intervals for the parameters.

1) Select **Choose Trace Parameters** from the **Device Setup** menu. Use the pull down box to select up to four additional vehicle parameters, and select a sampling rate for each parameter, or click **Default** to use the default settings.





Note: The sampling interval for vehicle speed is not selectable.

2) Click **OK** to save the parameter settings, or click **Cancel** to exit without saving changes.

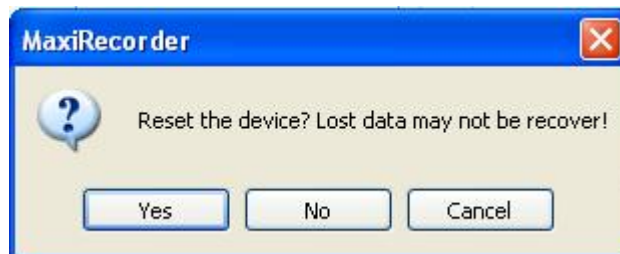
Note: If a parameter is selected more than once, you are promoted to review your parameter selections and remove any duplicate selections.

Resetting Device

The **Reset Device** is used to reset the MaxiRecorder to factory default settings.

Reset Device

Click and then a warning dialog box shows asking your confirmation. Click **Yes** to reset the device, or click **No** to exit without saving changes.



Enabling Functions

The MaxiRecorder functions that can be enabled via the MaxiRecorder software are: Reset check engine light, LED indicator, Alarm and VIN mode.

Enabling/Disabling Reset Check Engine Light

The **Reset Check Engine Light** is used to configure the MaxiRecorder to turn off/turn on the Check Engine Light on your next-connected vehicle.

To turn Check Engine Light on/off,

- 1) Tick the **Reset Check Engine Light** box.

The MaxiRecorder software takes a few seconds to finish the setting.

- 2) Tick the **Reset Check Engine Light** box.

The MaxiRecorder software takes a few seconds to finish the setting.

Note: The Check Engine Light can be reset only after the condition that turns on the indicator has been corrected.

Enabling LED Indicator

The **Enable LED** is used to enable/disable the MaxiRecorder's LED indicator, which shows the communication status between the device and your vehicle/computer.

After enabled, the LED flashes frequently when the MaxiRecorder is communicating with the vehicle; or it blinks irregularly when the MaxiRecorder fails to communicate with the vehicle. It flashes once after the MaxiRecorder is connected to the computer with the USB cable supplied.

Follow below steps to enable/disable the LED:

- 1) To enable the LED, tick the **Enable LED** box.

The MaxiRecorder software takes a few seconds to finish the setting.

- 2) To disable the LED, tick the **Enable LED** box.

The MaxiRecorder software takes a few seconds to finish the setting.

Enabling Alarm

The **Enable Alarm** is used to initialize the alarm settings. Once the alarm is enabled, it makes audible alarms at a frequency of 1Hz/s for over-speed, one alarm for speedband1, three alarms per second for speedband2 and five alarms per second for speedband3. The device makes alarm for acceleration and braking also, one alarm for hard acceleration and braking, two alarms for extreme acceleration and braking. Besides, it emits an audible alarm when connected to the computer with the USB cable supplied and four alarms when disconnected to the computer.

Follow the steps below to enable/disable the alarm:

- 1) To enable this function, tick the **Enable Alarm** box.

Wait a few seconds till the MaxiRecorder completes the setting.

- 2) To disable the alarm, tick the **Enable Alarm** box.

Wait a few seconds till the MaxiRecorder completes the setting.

Enabling VIN Mode

The **Enable VIN Mode** is used to set the MaxiRecorder to retrieve next-connected vehicle's VIN number. With VIN mode is enabled, the MaxiRecorder reads the VIN number of the vehicle that supports this mode, and the VIN number shows in the trip data downloaded. If the vehicle does not support the mode, a **Not Support** message will show in the trip data.

Follow the steps below to enable/disable the VIN mode:

- 3) To enable this function, tick the **Enable VIN Mode** box.

Wait a few seconds till the MaxiRecorder completes the setting.

- 4) To disable this function, tick the **Enable VIN Mode** box.

Wait a few seconds till the MaxiRecorder completes the setting.

8. Trip Log

The **Trip Log** is part of the MaxiRecorder software provides clear display of all the trip data recorded by the MaxiRecorder in summary, plot, report and table format.



To View the Trip Log List

The summary form displays the start time, stop time, distance, speed and so on.



Note: Click on  to hide the Detailed View dialog box, or click



to display the Detail View dialog box.

- 1) Click on the **Trip Log** in the MaxiRecorder main menu, the Trip Log Summary displays on the Trip Log main page. The trips recorded are listed in chronological order.

No	Start Time	Stop Time	Distance	Maximum Speed	Average Speed	Hard Brake	Extreme Brake	Hard Acceleration	Extreme Acceleration
1	2009-06-12 11:02:12	2009-06-12 11:03:36	1.093	50	47	3	0	2	0
2	2009-06-12 11:05:10	2009-06-12 11:06:18	0.909	79	48	3	0	0	2
3	2009-07-06 20:47:07	2009-07-06 20:47:51	0.268	38	24	0	0	0	0
4	2009-07-06 20:48:00	2009-07-06 21:27:53	31.127	88	46	0	0	1	0
5	2009-07-06 21:51:43	2009-07-06 22:02:07	4.524	57	26	0	0	0	0
6	2009-07-07 07:05:23	2009-07-07 07:10:07	1.375	62	17	0	0	1	0
7	2009-07-07 07:13:02	2009-07-07 07:44:08	28.769	91	55	0	0	0	0
8	2009-07-07 07:57:51	2009-07-07 07:59:30	0.293	39	10	0	0	0	0

- 2) To view different trips by click the desired trip, or by using the up and down scroll key on the keyboard to choose.
- 3) You can also see trip of log on a certain vehicle, a certain driver and a certain day(s) from the pull down boxes below the Trip Log main page.

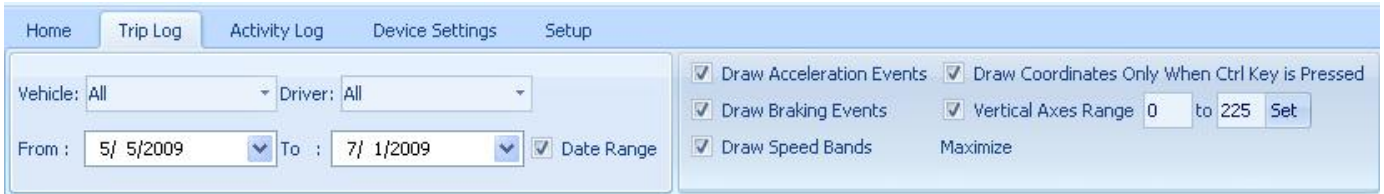
To view the log on certain vehicle, select the vehicle from the vehicle pull down box.

No	Start Time	Stop Time	Distance	Maximum Speed	Average Speed	Hard Brake	Extreme Brake	Hard Acceleration	Extreme Acceleration
1	2009-06-12 11:02:12	2009-06-12 11:03:36	1.093	50	47	3	0	2	0
2	2009-06-12 11:05:10	2009-06-12 11:06:18	0.909	79	48	3	0	0	2
3	2009-07-06 20:47:07	2009-07-06 20:47:51	0.268	38	24	0	0	0	0
4	2009-07-06 20:48:00	2009-07-06 21:27:53	31.127	88	46	0	0	1	0
5	2009-07-06 21:51:43	2009-07-06 22:02:07	4.524	57	26	0	0	0	0
6	2009-07-07 07:05:23	2009-07-07 07:10:07	1.375	62	17	0	0	1	0
7	2009-07-07 07:13:02	2009-07-07 07:44:08	28.769	91	55	0	0	0	0
8	2009-07-07 07:57:51	2009-07-07 07:59:30	0.293	39	10	0	0	0	0

To view the log on certain Driver, select the vehicle from the Driver pull down box.



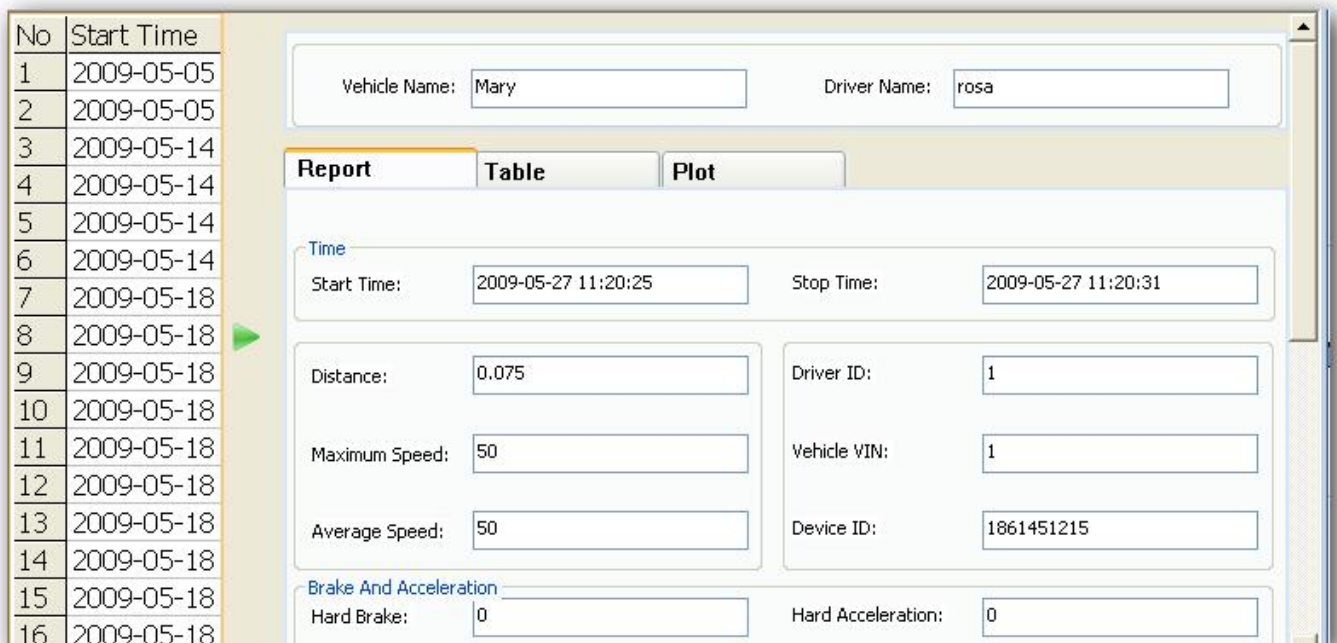
To view the log on certain days, select and dates from the pull down calendar.



Note: the vehicle and driver name of the selected trip remain on the top of the window all the time.

To View the Trip Log Report

The **Report** provides an intuitive view on the recorded trip log.



To view different trips, click the desired trip, use up and down scroll key to choose when it is necessary

To View the Trip Log Table

The Table view demonstrates Elapsed Time, Vehicle Speed and other parameters (up to four) pre-selected to track in the Device Setting.

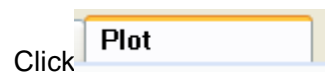
No	Start Time	Vehicle Name: <input type="text" value="Mary"/> Driver Name: <input type="text" value="rosa"/>			
1	2009-05-05				
2	2009-05-05				
3	2009-05-14				
4	2009-05-14				
5	2009-05-14				
6	2009-05-14				
7	2009-05-18				
8	2009-05-18				
9	2009-05-18				
10	2009-05-18				

Report	Table	Plot		
Elapsed ...	Vehicle Speed (KPH)	Coolant Temp (° C)	Engine Load (%)	Intake Air
00:00:00	50	81	39.2	25
00:00:01	50	81	39.2	25
00:00:02	50	81	39.2	25
00:00:03	50	81	39.2	25
00:00:04	50	81	39.2	25
00:00:05	50	81	39.2	25
00:00:06	50	81	39.2	25
00:00:07	50	81	39.2	25
00:00:08	50	81	39.2	25

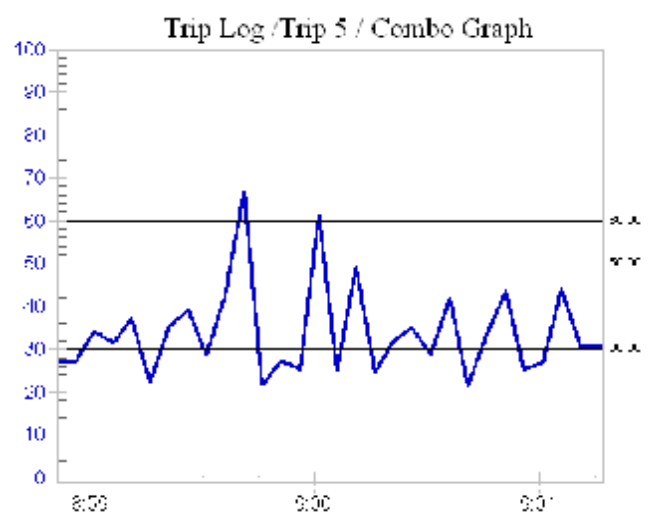
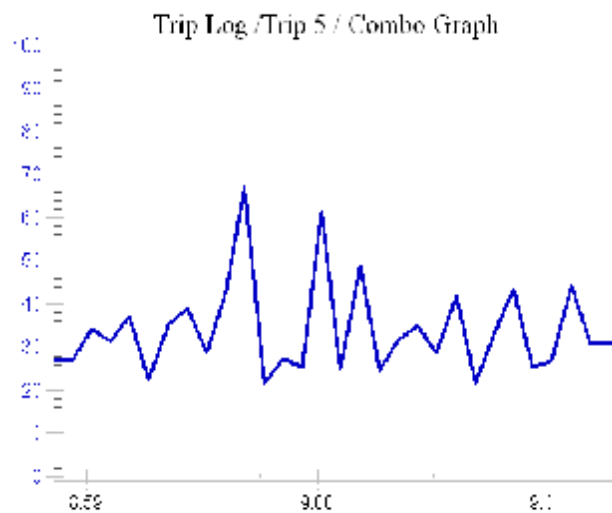
To View the Trip Log Plot

The Plot view demonstrates Vehicle Speed and other parameters (up to four) pre-selected to track in the Device Setting with plain graphs.

To set plot parameters,



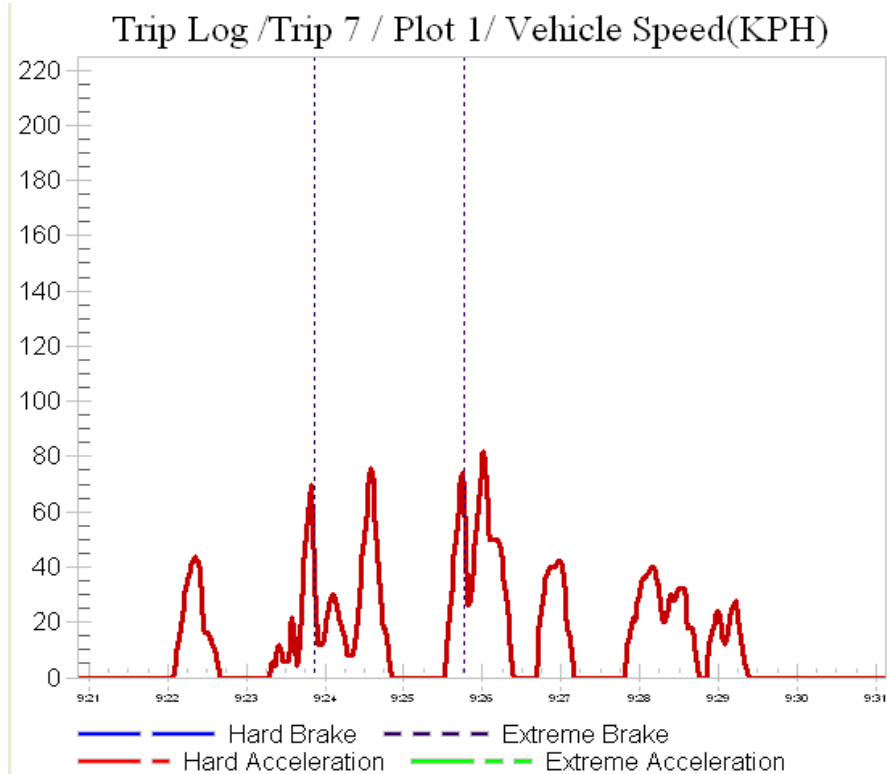
Draw Speed Bands – Displays your selected speed bands settings in the **Combo Graph** and **Plot 1/Vehicle Speed**. They are represented in the plot by black horizontal lines marked with the numbers.



Draw Braking Events - Draws vertical lines in the **Plot 1/Vehicle Speed** indicating braking events that exceed the braking thresholds preset in the **Device Setting** menu. A hard braking event is a dotted blue vertical line and an extreme braking event is a dotted purple one.

EXAMPLE

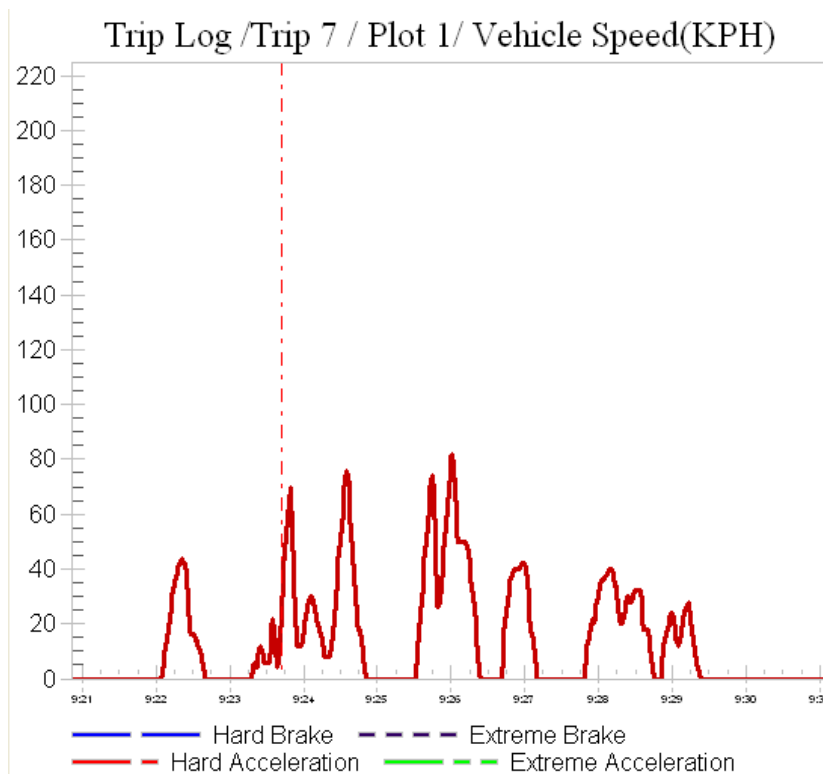
The following Plot indicates there are two extreme braking events (9:23 - 9:26 AM),



Draw Acceleration Events – Displays acceleration events in the **Plot 1/Vehicle Speed** that exceed the acceleration thresholds preset in the **Device Setting** menu. A hard acceleration event is a dotted red vertical line while an extreme acceleration event is a dotted green one.

EXAMPLE

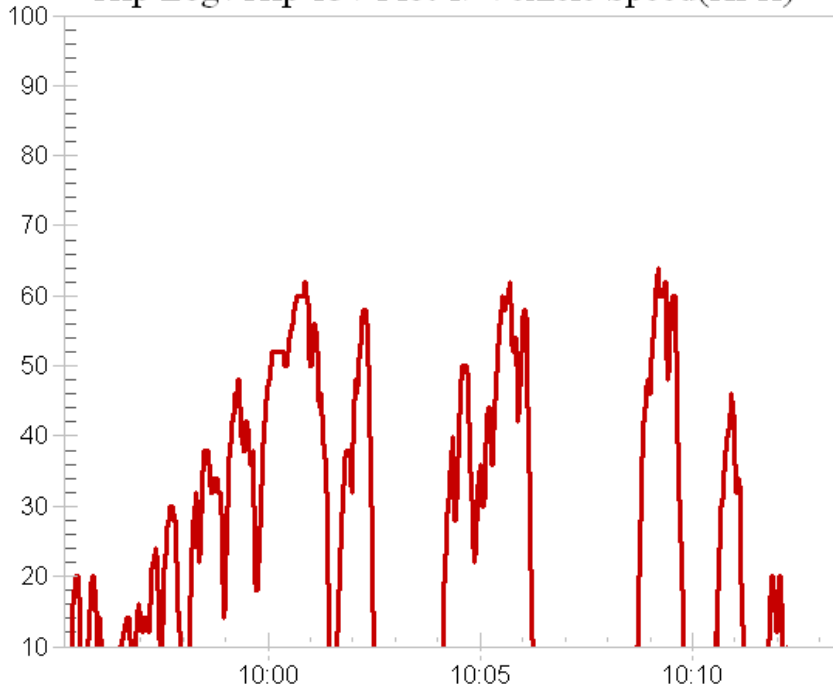
The following Plot indicates there is a hard acceleration event (9:23 - 9:24 AM),



Limit vertical axes from () to () Set – Used to set the range of vertical axes of the **Plot 1/Vehicle Speed**. Check the box to turn the option on, enter the numbers, at last, click to confirm.

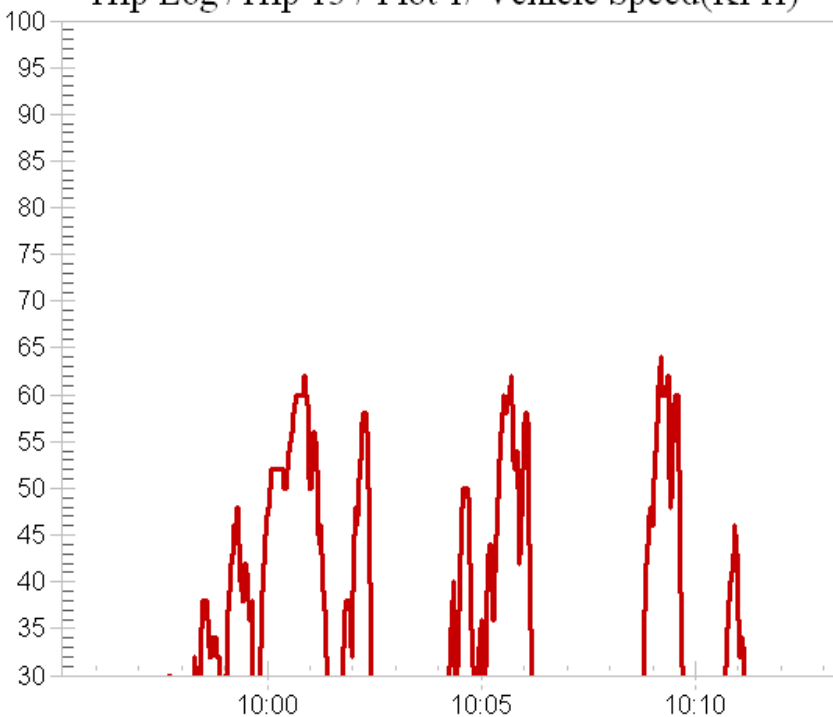
Draw Speed Bands Draw Coordinates Only When Ctrl Key is Pressed
 Draw Braking Events Vertical Axes Range 10 to 100 Set
 Draw Acceleration Events

Trip Log / Trip 13 / Plot 1 / Vehicle Speed(KPH)

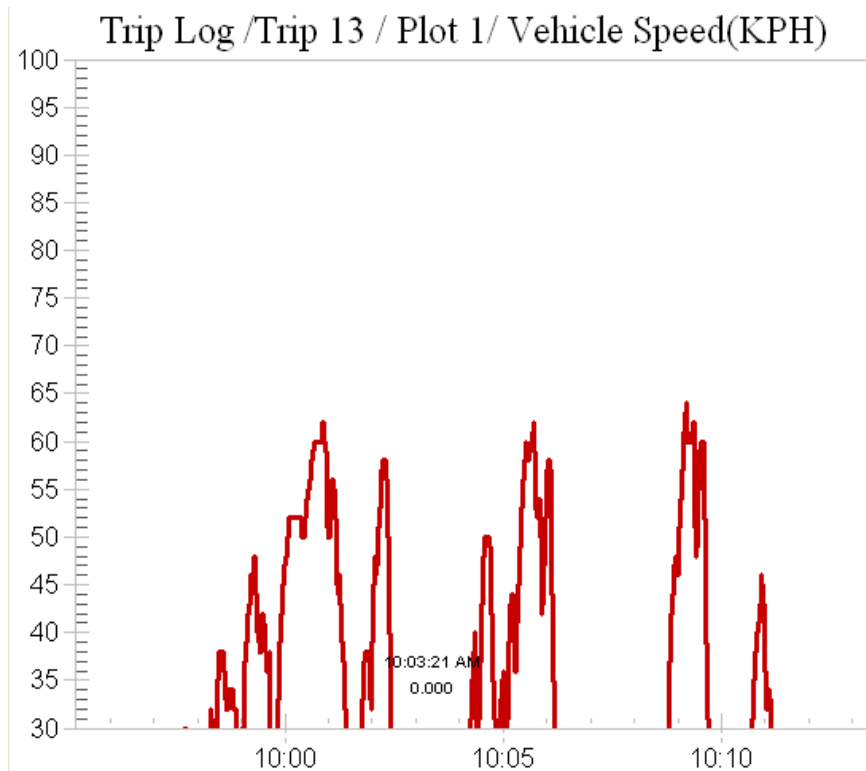


Draw Speed Bands Draw Coordinates Only When Ctrl Key is Pressed
 Draw Braking Events Vertical Axes Range 30 to 100 Set
 Draw Acceleration Events

Trip Log / Trip 13 / Plot 1 / Vehicle Speed(KPH)

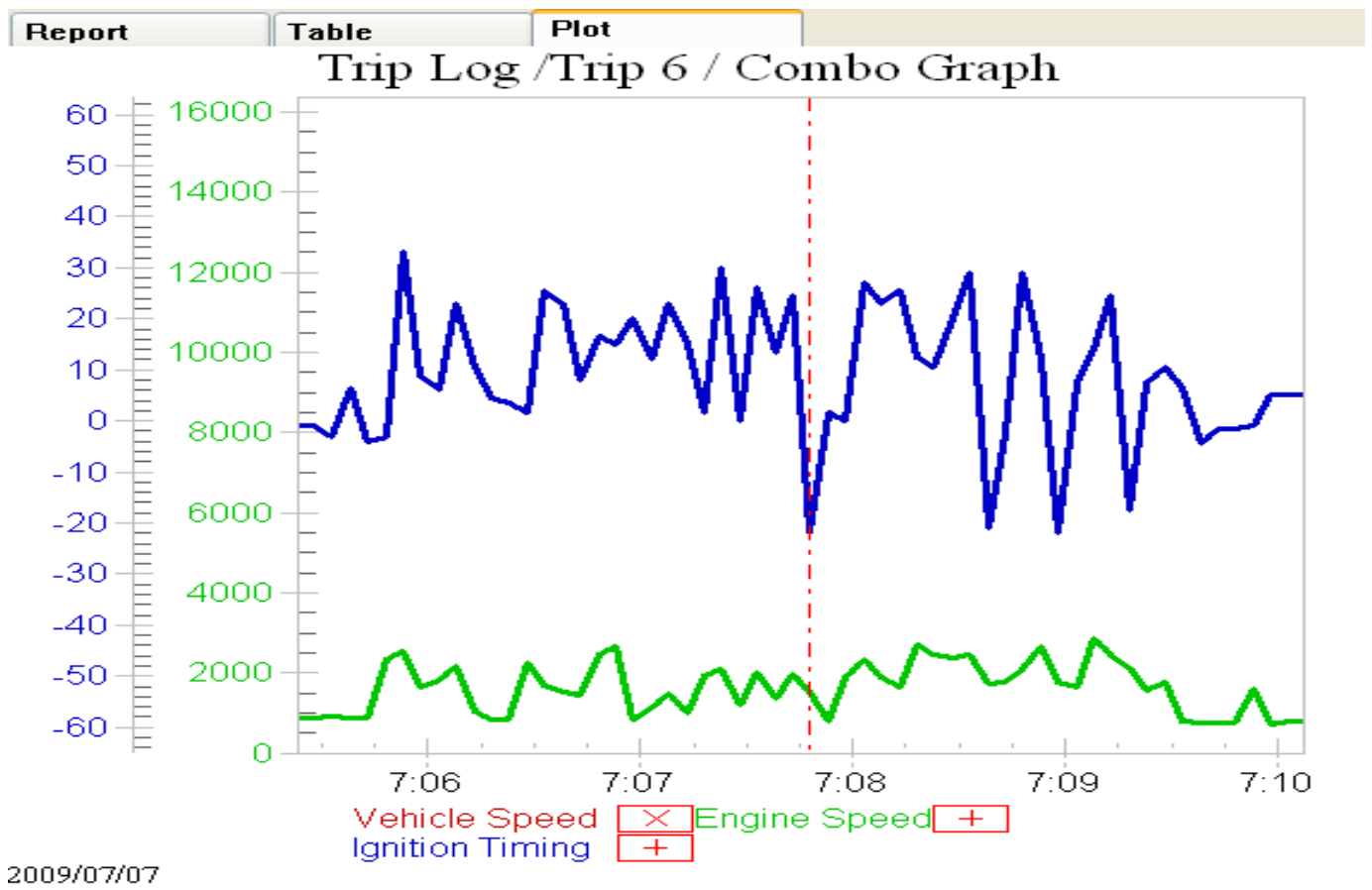
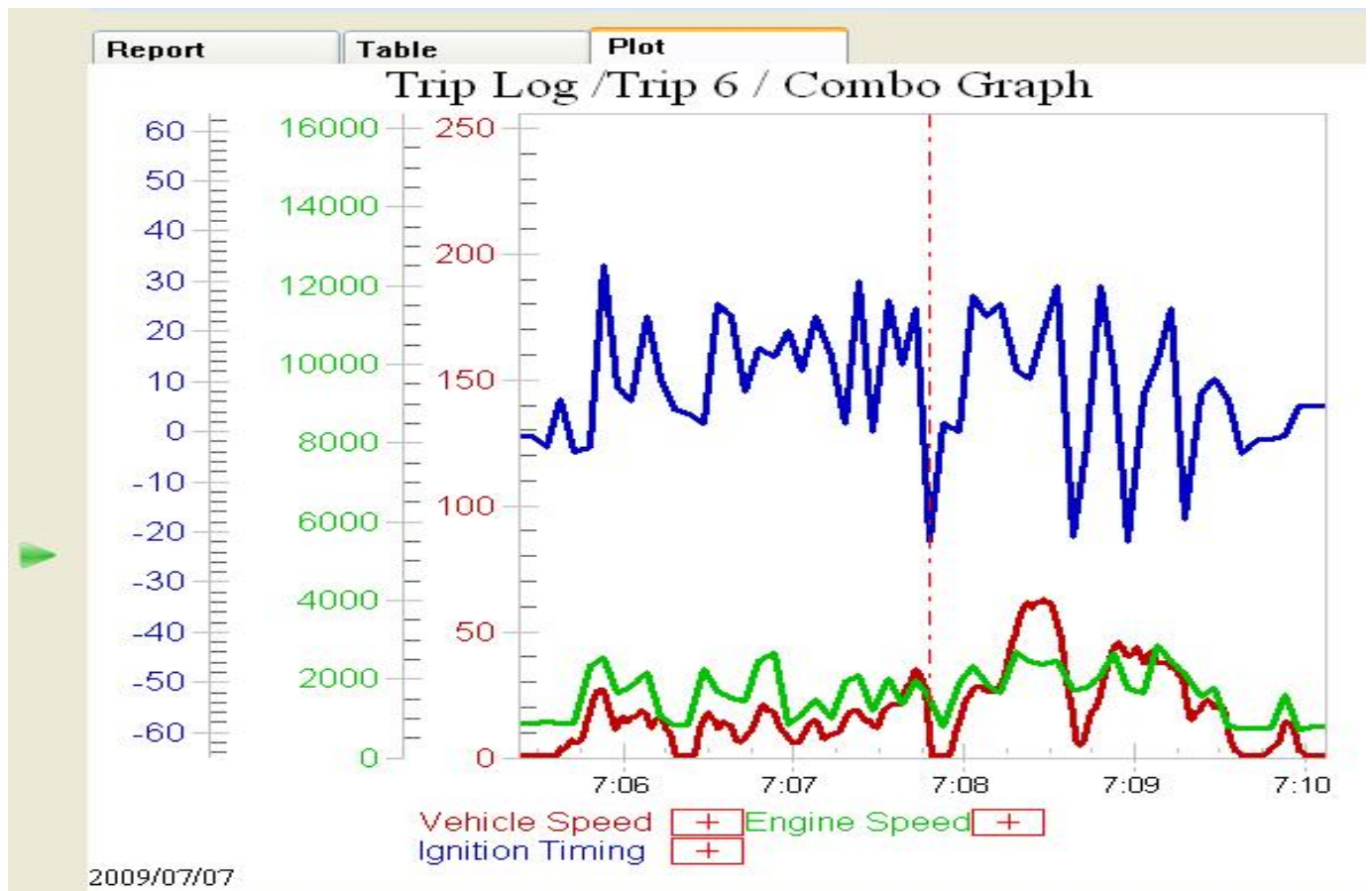


Draw Coordinates Only When Ctrl Key is Pressed - Display the cursor's plot coordinates only when the Control key is pressed. The plot coordinates are the elapsed time of the trip and the data value associated with that time. If not checked, the cursor's coordinates on the plot are displayed continuously when the cursor is within the plot area.



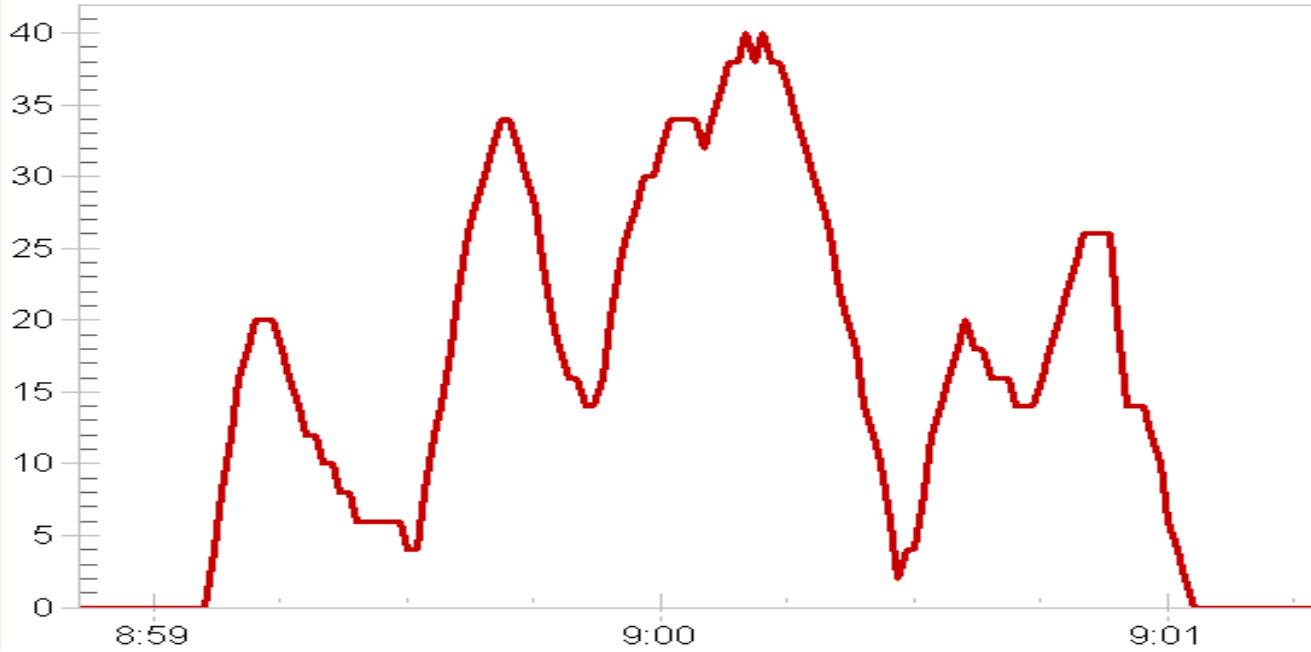
Note: This option is applicable to the all the Plots except the Combo Graph.

- 1) Check the box next to each plot option to turn it on. Deselect the option off with another click. Multiple options can be turned on or off at a time.
- 2) Select the desired parameters by clicking the box at the right of them. suggests the option is on while suggests off. When a parameter is selected, the corresponding curves display in the same color in the Combo Graph;

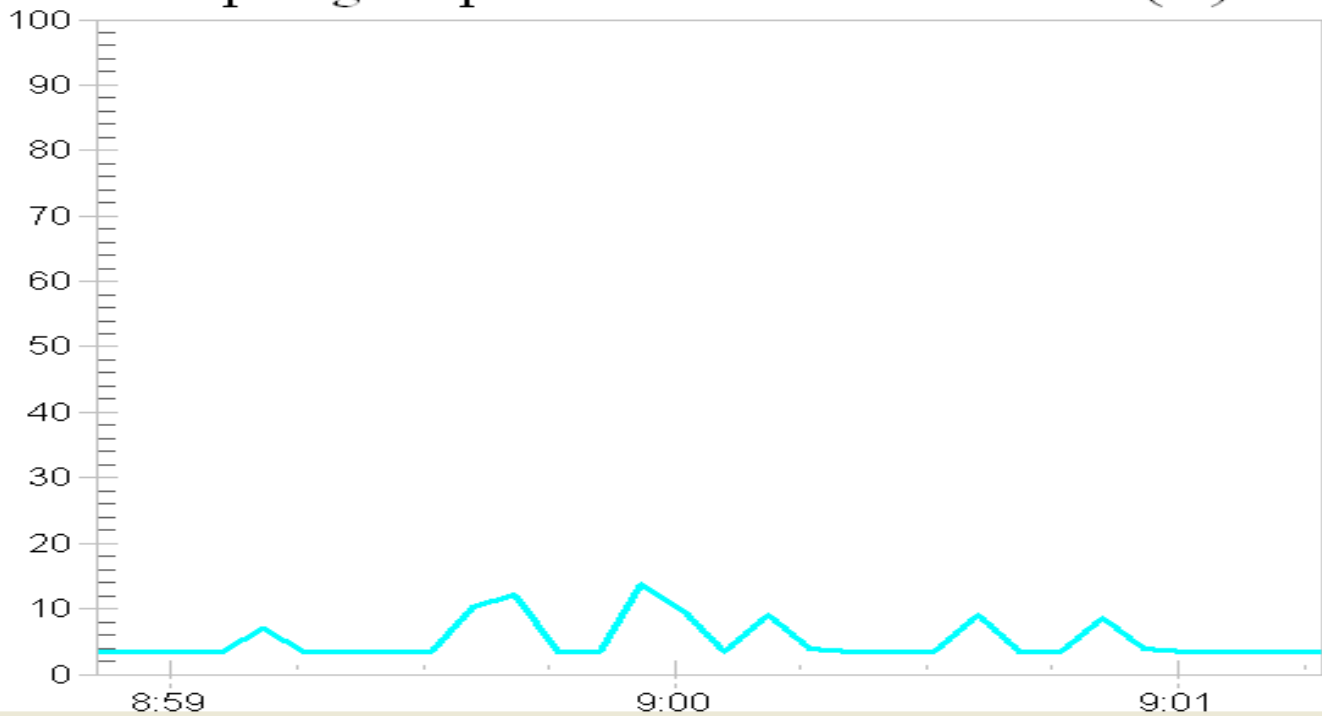


3) View the partial graphs of the parameters by dragging the scroll bar.

Trip Log / Trip 5 / Plot 1 / Vehicle Speed(KPH)



Trip Log / Trip 5 / Plot 5 / Throttle Position(%)



These options are not available in **Report** and **Table** view.

9. Activity Log

The **Active Log** displays all the activities recorded for the currently loaded MaxiRecorder database.

To view the Activity Log Summary

Click the [Activity Log](#) icon from the main menu. The **Active Log** displays:

Time	Type	Device
2009-05-15 09:09:30	Connected to PC	1861451223
2009-05-15 09:09:38	Logs Downloaded	1861451223
2009-06-11 11:43:08	Connected to PC	1861451223
2009-06-11 11:43:11	Logs Downloaded	1861451223
2009-06-11 11:44:26	Connected to PC	1861451223
2009-06-11 11:44:32	Connected to PC	1861451223
2009-06-11 11:44:39	Connected to PC	1861451223
2009-06-11 11:44:53	Logs Downloaded	1861451223
2009-06-11 11:45:08	Logs Downloaded	1861451223
2009-06-11 11:45:42	Connected to PC	1861451223
2009-06-11 11:46:05	Logs Downloaded	1861451223
2009-06-11 11:46:46	Connected to PC	1861451223
2009-06-11 11:46:58	Connected to PC	1861451223
2009-06-11 11:47:02	Logs Downloaded	1861451223

7 types of device status may be showed in the MaxiRecorder dialog box,

Cleared

Connected to PC

Logs Downloaded

Connected to Vehicle

Disconnected from Vehicle

Date Altered

Update Device Software

To view Activity Log of a certain device

You may have downloaded more than one data device to the same computer, in this circumstance, choose the device you want to view in the Device pull down box.

To view Activity Log of selected date range

1) Tick the Date Range box to turn on the command and when the check box becomes Date Range, the **From** and **To** drop-down list box are active.

2) Select the dates in the pull down calendar to set a given period during which you want to view in the activity log.



10. Print Command

Click **Print** at the upper right part of the MaxiRecorder software, two options show up. **Print Setup** is used to setup the printing, while **Print Direct** is used to print the current display page directly.



11. Help Command

Click **Help** at the upper right part of the MaxiRecorder software, three options show up:



- 1) **MaxiRecorder User Guide** Lead to the printable PDF version of the MaxiRecorder user's manual.
- 2) **Online Support** lead to the Autel website, www.auteltech.com, where you could get more information.
- 3) **About MaxiRecorder...** lead to the information of the device, which includes Serial No and Version.

12. Customizing Views

The **Style** command is used to change visual style of the MaxiRecorder software.

Select the visual style you prefer by clicking the left mouse button.



13. Warranty and Service

One Year Limited Warranty

Autel warrants this vehicle monitor product against defects in materials and workmanship for a period of ONE (1) YEAR from the date of original purchase. If a defect exists, at its option Autel will repair or replace the product at no charge with the Proof of Purchase. The warranty obligations are limited to the terms set forth below:

- 1) Not apply to damages caused by improper use, accident, flood, lightning, or if the product was altered or repaired by anyone other than the Manufacturer's Service Center.
- 2) Not be liable for any incidental or consequential damages arising from the use, misuse, or mounting of the MaxiRecorder. Some states do not allow limitations on how long an implied warranty lasts, so the above limitations may not apply to you.
- 3) All information in this manual is based on the latest information available at the time of publication and no warranty can be made for its accuracy or completeness. Autel reserves the right to make changes at any time without notice.

Service Procedures

If you have any questions, please contact your local store, distributor or visit our website at www.auteltech.com.

If the MaxiRecorder is proved defective and needs repair, please contact your local distributor.