

PERS-2400B

PERSONAL EMERGENCY REPORTING SYSTEM



INSTALLATION & OPERATION INSTRUCTIONS

Linear[®]
Building On Innovation.

USA & Canada (800) 421-1587 & (800) 392-0123
(760) 438-7000 - Toll Free FAX (800) 468-1340
www.linearcorp.com



Important PERS Installation Warnings



- ✓ **Be sure and test the system weekly.** Instruct the end-user regarding the importance of periodically testing the system.
 - ✓ **IMPORTANT** – For telephone connection, connect the “LINE” jack to the household telephone line wall jack, as described in the installation instructions. **The Console will not be able to report over the telephone if this connection is not made.**
 - ✓ The Console must be connected to a Managed Facilities Voice Network (MFVN) that will remain in operation during local power outages.
 - ✓ The Console must be located centrally in the installation area relative to where the personal emergency transmitter(s) will be carried and/or activated.
 - ✓ Locating the Console adjacent to large metal objects may change or reduce the effective radio range of personal emergency transmitters used with the Console.
 - ✓ Electrical interference can reduce the effective radio range of the Console. Do not operate any electrical appliances or electrical noise generating devices (fluorescent lamps, motors, etc.) near the Console.
 - ✓ The Console should be kept free of dust and moisture.
 - ✓ Do not use ammonia, benzene, thinner, or similar solvents, or abrasive powder to clean the housing of the Console or the emergency transmitter(s). Clean units by wiping with a damp, soft cloth.
 - ✓ The Console should not be located where sunlight will shine direct on it.
 - ✓ Avoid locating the Console in extremely hot or cold locations.
- ✓ **This electronic product and its backup battery are not to be thrown away with everyday waste.** It is your responsibility to dispose of electrical and electronics equipment by handing it over to a designated collection point for the recycling of waste electrical and electronic equipment (W.E.E.E.). The separate collection and recycling of your waste electrical and electronic equipment at the time of disposal will help to conserve natural resources and ensure that it is recycled in a manner that protects human health and the environment. For more information about where you can drop off your waste equipment for recycling, please contact your local city office, or your household waste disposal service, or the shop where you purchased the product.

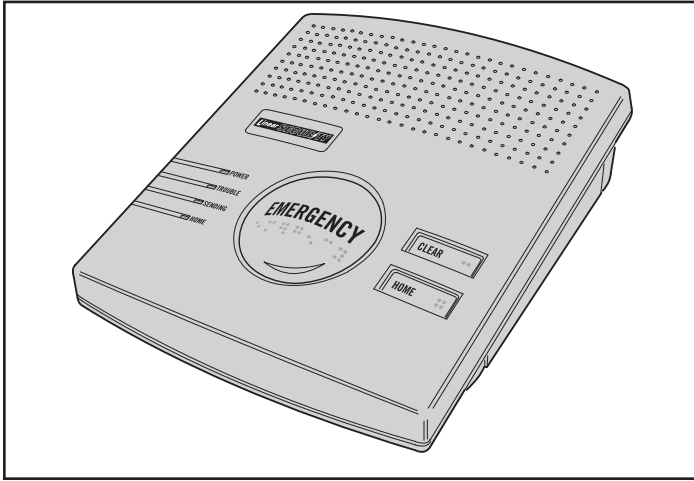


Contents

1.	Product Description.	2
2.	Operation Summary	3
3.	Front Panel Features.	4
4.	Removing Bottom Cover.	4
5.	Console Bottom Features	4
6.	Optional VB-4B Voice Board Installation	4
7.	Optional Relay Output Connections	5
8.	Optional Remote Speaker/Mic Connections	5
9.	Backup Battery	5
10.	Install Transformer.	5
11.	Apply Power - Select Dialing Method	6
12.	Transmitter Installation Options.	6
13.	Installing Single Transmitters	6
14.	Installing Multiple Transmitters	6
15.	Testing Transmitters	7
16.	Erasing Transmitters	7
17.	Local Programming with RA-2400	7
18.	Telephone Connections	7
19.	System Operation	8
20.	Activity Timer.	8
21.	Audio Board Operation	8
22.	Speakerphone Operation	8
23.	Supervisory Conditions.	9
24.	Wireless Installation Tips	9
25.	Specifications	9
26.	Linear Limited Warranty	9

1. Product Description

The PERS-2400B Console is a UL Listed supervised wireless emergency reporting product designed for personal emergency applications. The table-top or wall-mount Console provides “pushbutton” emergency assistance to anyone who desires additional security and peace of mind. For the visually impaired, each button on the Console is molded with braille characters to identify the button’s function.



PERS-2400B Console

The Console receives signals from up to 16 Linear wireless transmitters. Activating a transmitter causes the Console’s digital communicator to send the appropriate alarm report to the central monitoring station via the standard telephone network. In addition to the central station report, audible and visual indications occur and the alarm relay energizes during an emergency activation.

The emergency alarm can be triggered by the large EMERGENCY button on the face of the Console or with a wireless transmitter. The fire alarm can be triggered by wireless smoke alarms.

Activity Timer

The optional *activity timer* can be set for 8, 12 or 24 hour operation. The emergency alarm will trigger automatically if the time set elapses before an activity transmitter is triggered or the Console’s HOME button is pressed.

Voice Prompts

If the optional Model VB-4B voice board is installed, the Console will “talk” to the user. The digitized voice, will sound “emergency”, “fire”, “CO Alarm”, “timer done soon”, and other system operation, setup, and supervisory prompts from a 38 word vocabulary.

Audio Communications

The Model VB-4B voice board supports 2-way automatic, 2-way manual, and 1-way listen-only audio communications with central station monitoring personnel using the Console’s built-in high-sensitivity microphone and speaker.

Built-In Speakerphone

The Console can be programmed to act as a remote controlled “speakerphone”. With the speakerphone mode enabled (Model VB-4B voice board required) the Console will monitor the telephone line for an incoming call. Activating any emergency transmitter (or the Console’s EMERGENCY button) while the telephone is ringing will cause the Console to seize the line and begin full duplex voice communications. Activating any emergency transmitter (or EMERGENCY button) during the call will disconnect the line. The Console will auto-disconnect after 15, 30, or 60 minutes (programmable).

Transmitter Supervision

Supervised transmitters regularly send status reports to the Console and low battery reports when their batteries are low. When the Console receives a low battery report, the TROUBLE indicator flashes. If the Console fails to receive a status report from a transmitter for a period of 24 hours, the TROUBLE indicator will light. All supervisory conditions can sound a local annunciation and be reported to the central station.

Digital Communicator

The Console’s digital communicator can route calls to three telephone numbers: primary, secondary, and supervisory. General reporting codes and individual sensor reporting codes are programmable for the 4x2 format. Alternately, Ademco Contact ID may be selected for the communicator reporting format.

Power Supply

Powered by a low voltage plug-in transformer, the Console has provisions for a rechargeable backup battery for operation during AC power outages. A power switch allows for out-of-service storage of the Console without discharge of the battery. The battery is recharged and supervised by the Console. If the backup battery becomes low the POWER light will flash and the condition can be reported to the central station.

Programming

The Console is programmed using the RA-2400 remote access software (available at Linear’s Web site: www.linearcorp.com). Refer to the software’s detailed instruction manual and built-in help file for programming details.

2. Operation Summary

A variety of Linear's DXS Format and DXT Format transmitters can be used with the Console.

✓ **NOTE: DXS Format transmitters are supervised, DXT Format transmitters are not supervised.**

Transmitters can be assigned to the following four functions:

Emergency

Portable pendant, belt-clip, or wristband type transmitters and stationary transmitters are used for personal emergency applications. When an emergency transmitter is triggered, the Console sounds a two-tone siren and an emergency report is sent to the central station. The emergency alarm can also be triggered by pressing the Console's EMERGENCY button.

Fire

The Model DXS-73 wireless photoelectric smoke alarms trigger the fire alarm. When the fire alarm is activated, the Console sounds a repeated series of three beeps and a fire report is sent to the central station.

Carbon Monoxide (CO)

The Model DXS-80 wireless carbon monoxide detectors trigger the CO alarm. When a carbon monoxide alarm is activated, the Console sounds a repeated series of four beeps and a carbon monoxide report is sent to the central station.

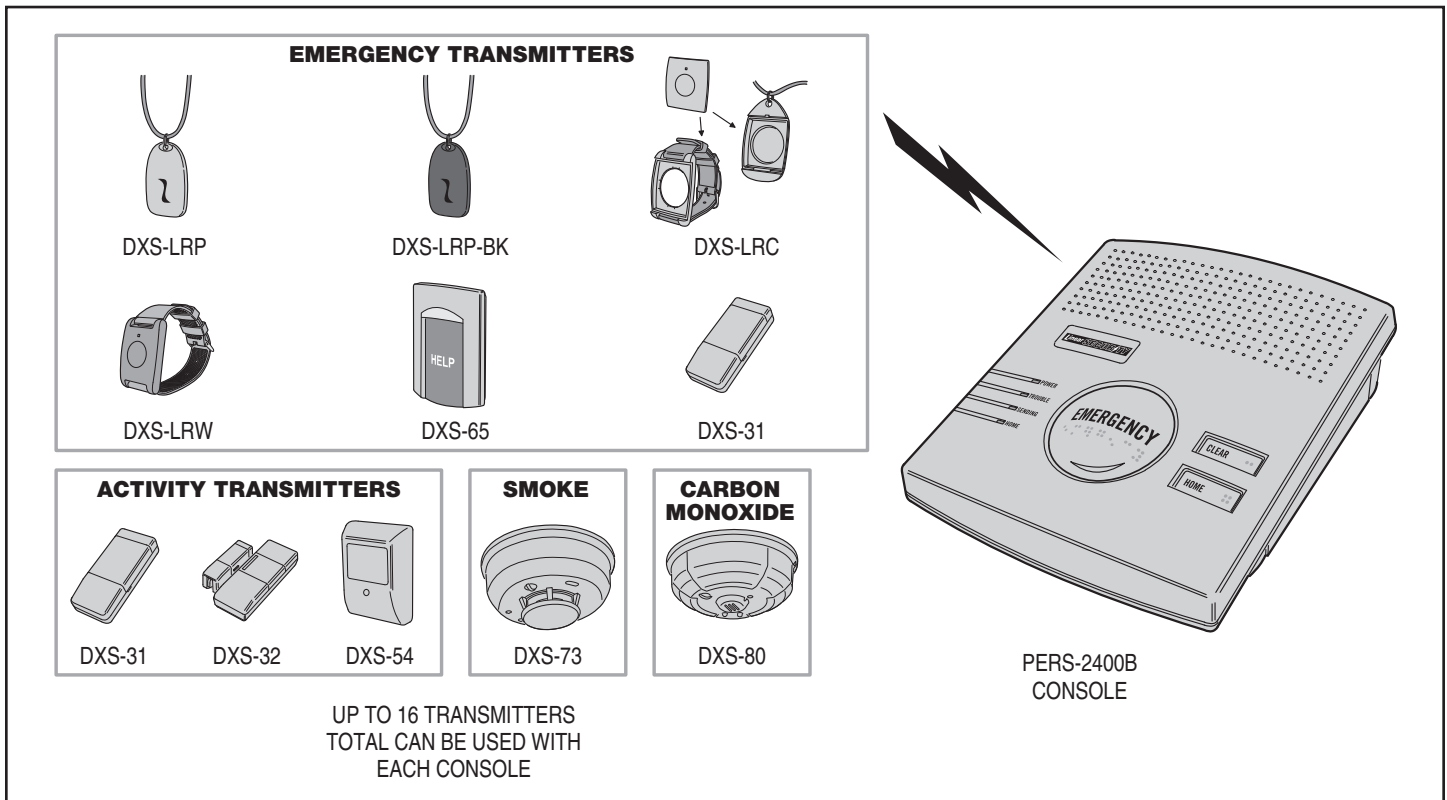
Activity

Switch or motion triggered transmitters (Models DXS-31/DXS-32 and DXS-54) can be used for ensuring human activity. The DXS-54 motion detector will monitor room activity. The DXS-31 and DXS-32 transmitters can be wired to a pushbutton or switch for manual activity monitoring. As long as a signal is received at least once every 8, 12, or 24 hours (programmable) an alarm will **not** be triggered. 15 minutes before the programmed time expires, the HOME indicator will start blinking and a low pitched beep will sound every ten seconds.

The activity timer can be reset with a signal from one of the activity transmitters or by pressing the HOME button on the Console. Failure to reset the activity timer within the programmed time period will cause the Console to sound the two-tone emergency siren and send an inactivity report to the central station. The activity timer can be turned on or off at the Console or through programming.

Automatic Full System Test

The Console can be programmed to perform a full system test daily, weekly, or monthly. The automatic full system test can also be disabled. As long as all system components are operational, the system test report will be sent at the programmed interval. The full system test report will NOT be sent if any system component (transmitter, Console, phone line) is not fully functional.



PERS-2400B Compatible Transmitters

3. Front Panel Features

TROUBLE INDICATOR

- NORMALLY OFF
- LIGHTS WHEN ANY TRANSMITTERS ARE MISSING (SUPERVISORY)
- BLINKS SLOWLY WHEN ANY TRANSMITTERS HAVE A LOW BATTERY

POWER INDICATOR

- LIGHTS WHEN AC IS PRESENT
- BLINKS SLOWLY WHEN BATTERY IS CHARGING
- BLINKS QUICKLY WHEN AC IS ABSENT (CONSOLE ON BATTERY POWER)
- OFF IN TEST AND SETUP MODES

EMERGENCY BUTTON

- PRESS AND HOLD TO TRIGGER THE EMERGENCY ZONE
- PRESS DURING RING FOR SPEAKERPHONE MODE
- PRESS DURING SPEAKERPHONE MODE TO DISCONNECT

CLEAR BUTTON

- STOPS ALARM
- ADDS CANCEL TO AN ALARM REPORT IN PROGRESS
- PRESS IMMEDIATELY AFTER EMERGENCY TO PREVENT REPORT
- CLEARS INDICATORS
- STOPS TROUBLE BEEPER
- PRESS FOR 5 SECONDS TO ADD A TRANSMITTER

HOME BUTTON

- PRESS TO RESET ACTIVITY TIMER
- PRESS FOR 5 SECONDS TO TURN ACTIVITY TIMER OFF
- IF ACTIVITY TIMER IS OFF, PRESS FOR 5 SECONDS TO TURN ACTIVITY TIMER ON

HOME INDICATOR

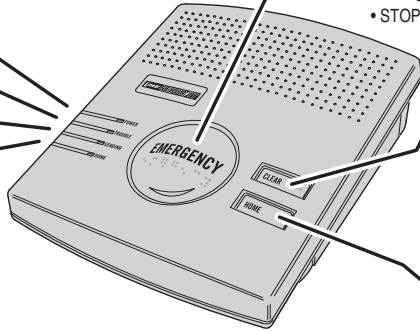
- LIGHTS WHEN ACTIVITY TIMER IS ON
- BLINKS SLOWLY WHEN LESS THAN 15 MINUTES REMAIN ON THE ACTIVITY TIMER
- BLINKS QUICKLY WHEN THE ACTIVITY TIMER HAS EXPIRED

HOME BUTTON COVER

- ADHESIVE BACKED PLATE TO HIDE THE HOME BUTTON IF THE ACTIVITY TIMER IS NOT USED

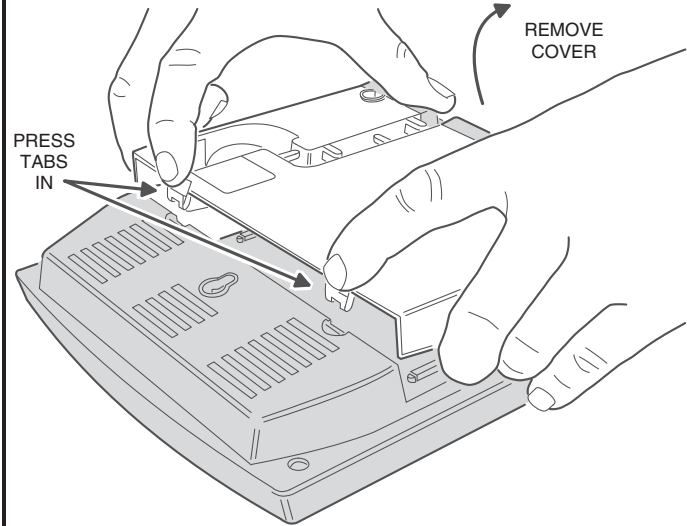
SENDING INDICATOR

- NORMALLY OFF
- FLASHES WHEN CONSOLE IS PLACING A CALL



4. Removing Bottom Cover

TO ACCESS THE INSIDE OF THE CONSOLE PRESS THE TWO LOCKING TABS IN AND REMOVE THE CONSOLE'S BOTTOM COVER



5. Console Bottom Features

12-VOLT 1.2 AMP/HOUR BACKUP BATTERY

16 VAC 1.25 AMP PLUG-IN TRANSFORMER

EXTERNAL SPEAKER, RELAY OUTPUT, AND DIALER POWER TERMINALS

1 AMP 2AG BATTERY FUSE (HIDDEN)

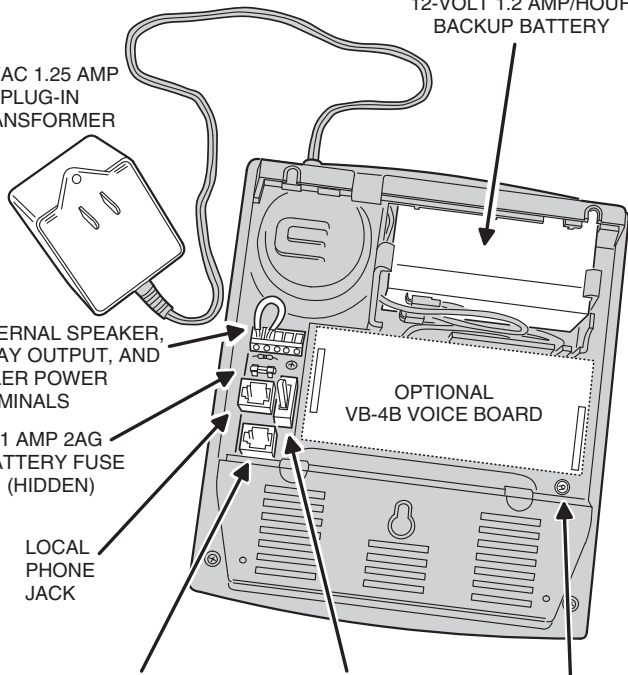
LOCAL PHONE JACK

TELEPHONE LINE JACK

POWER SWITCH

TEST BUTTON

OPTIONAL VB-4B VOICE BOARD



6. Optional VB-4B Voice Board Installation

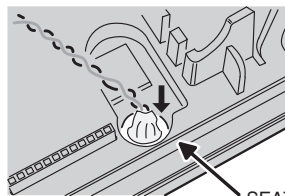
1

CONNECT BLACK MICROPHONE WIRE TO CENTER TERMINAL



CONNECT RED MICROPHONE WIRE TO THIS TERMINAL

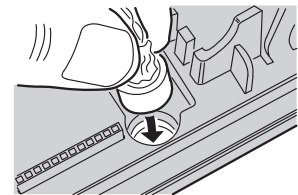
3



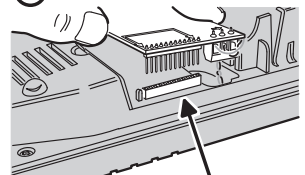
SEAT MICROPHONE

2

PRESS-FIT MICROPHONE INTO ROUND MOUNTING HOLE



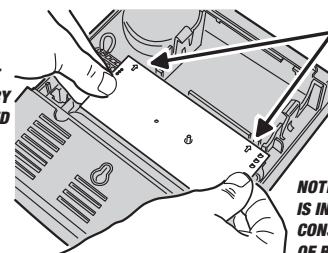
4



CAREFULLY ALIGN PINS TO CONNECTORS ON BOTH ENDS OF BOARD

5

NOTE: POWER MUST BE OFF AND BATTERY SHOULD BE REMOVED OR DISCONNECTED BEFORE INSTALLING THE AUDIO BOARD

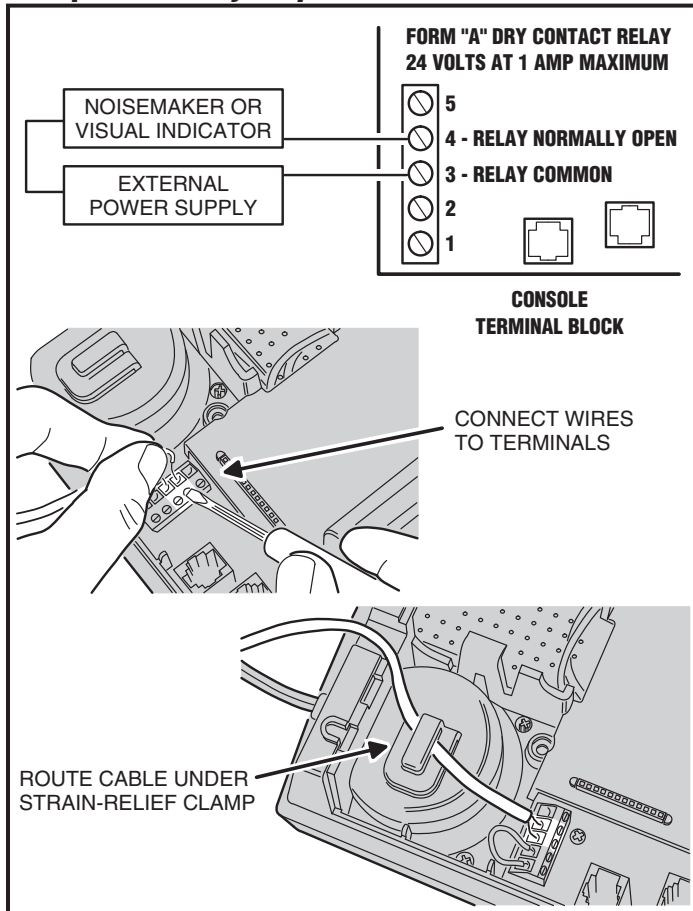


BE SURE THAT THE WHITE ARROWS ON AUDIO BOARD POINT TOWARD THE BATTERY AREA

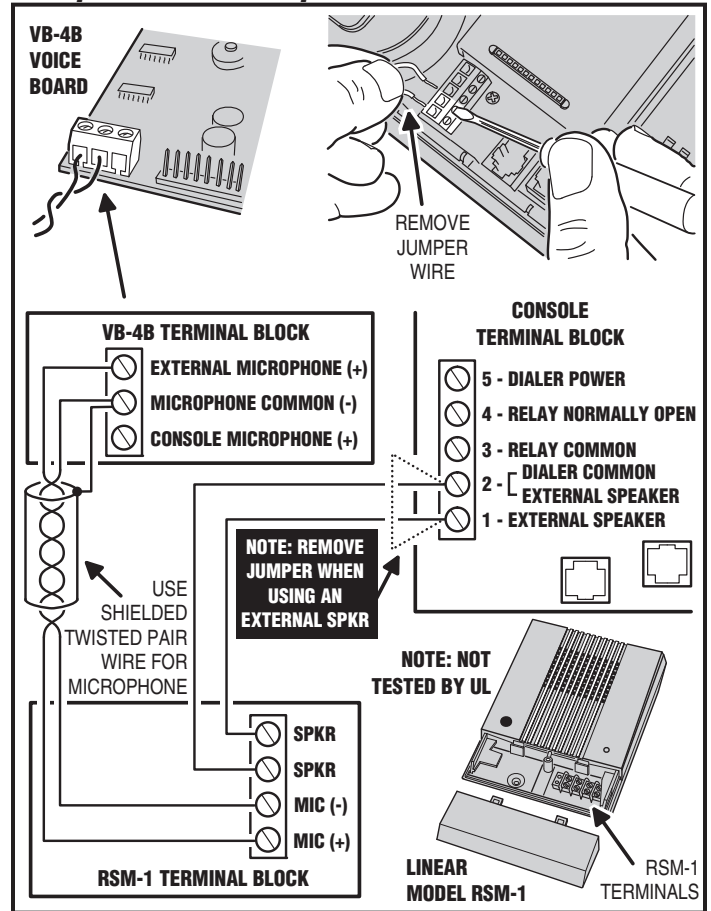
PRESS BOARD COMPLETELY INTO CONNECTORS

NOTE: AFTER THE AUDIO BOARD IS INSTALLED AND ENABLED, THE CONSOLE WILL SPEAK INSTEAD OF BEEP DURING PROGRAMMING

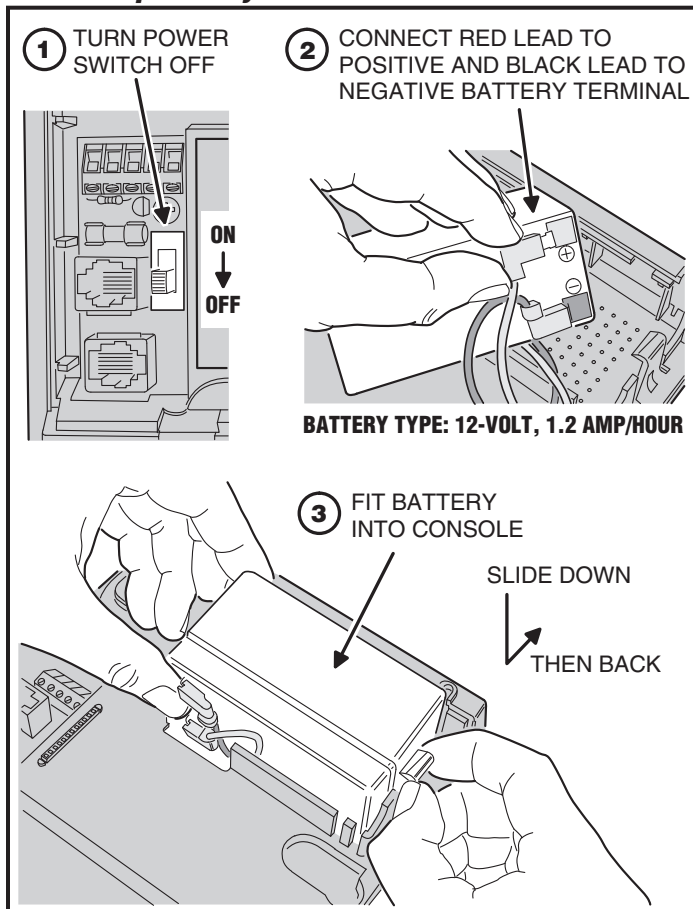
7. Optional Relay Output Connections



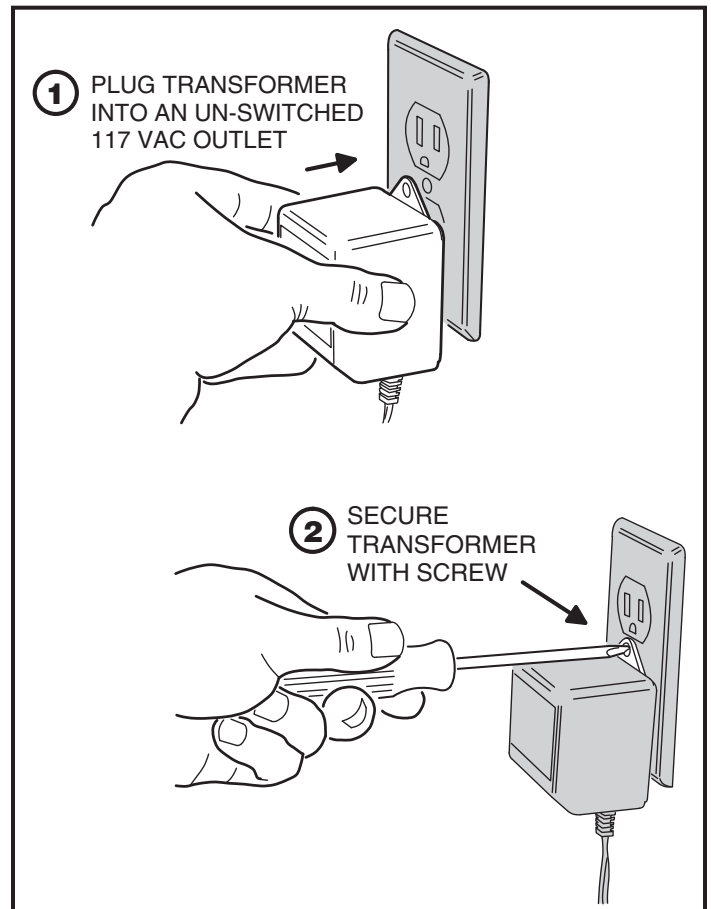
8. Optional Remote Speaker/Mic Connections



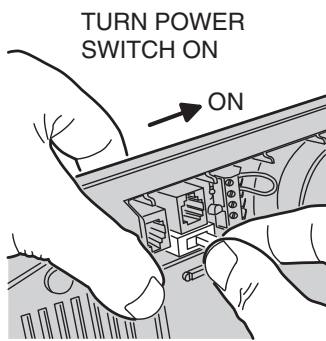
9. Backup Battery



10. Install Transformer

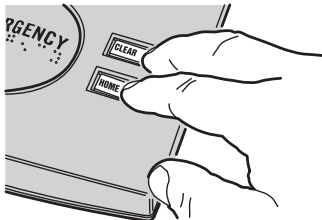


11. Apply Power - Select Dialing Method



NOTE: THE DEFAULT DIALING METHOD IS TONE DIALING

IF REQUIRED, CHANGE THE DIALING METHOD BY PRESSING AND HOLDING THE HOME & CLEAR BUTTONS WHILE SWITCHING THE POWER ON

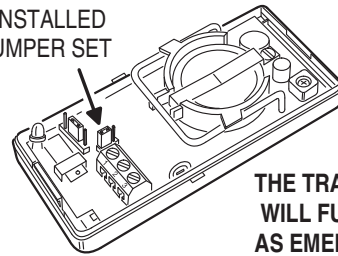


- 7 BEEPS SOUND FOR PULSE DIALING
- 8 BEEPS SOUND FOR TONE DIALING

12. Transmitter Installation Options

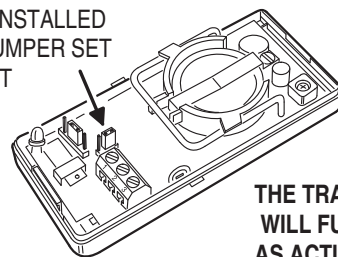
FOR DXS-31 STATIONARY TRANSMITTERS

WHEN IT IS INSTALLED WITH THE JUMPER SET FOR DELAY



THE TRANSMITTER WILL FUNCTION AS EMERGENCY

WHEN IT IS INSTALLED WITH THE JUMPER SET FOR INSTANT

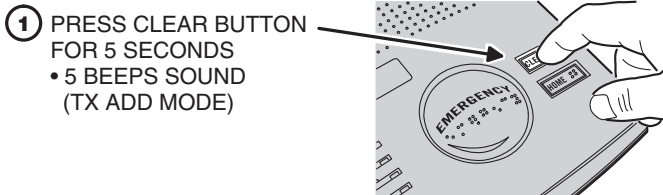


THE TRANSMITTER WILL FUNCTION AS ACTIVITY

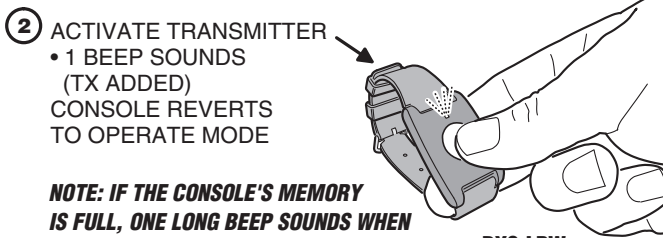
FOR MODEL DXS-32: CUT JUMPER (INSTANT TX) FOR USE AS AN ACTIVITY TX. SEE DXS-32 INSTALLATION INSTRUCTIONS

13. Installing Single Transmitters

ADDS ONE TRANSMITTER AT A TIME



- 1 PRESS CLEAR BUTTON FOR 5 SECONDS
 - 5 BEEPS SOUND (TX ADD MODE)



- 2 ACTIVATE TRANSMITTER
 - 1 BEEP SOUNDS (TX ADDED)
 CONSOLE REVERTS TO OPERATE MODE

NOTE: IF THE CONSOLE'S MEMORY IS FULL, ONE LONG BEEP SOUNDS WHEN TRYING TO ADD A TRANSMITTER

- 3 REPEAT STEPS 1 & 2 FOR ADDITIONAL TRANSMITTERS (UP TO 16 TOTAL)

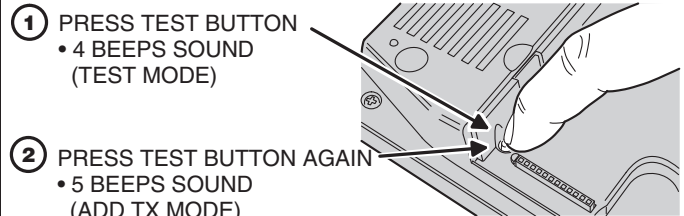
NOTE: PRESS CLEAR BEFORE TRANSMITTING TO RETURN TO OPERATE MODE WITHOUT ENTERING A TRANSMITTER

 - 2 BEEPS SOUND WITH ACTIVITY TIMER ENABLED
 - 3 BEEPS SOUND WITH ACTIVITY TIMER DISABLED
 THE CONSOLE WILL RETURN TO OPERATE MODE AUTOMATICALLY AFTER 30 SECONDS

NOTE: WRITE DOWN EACH TRANSMITTER'S TYPE AND ZONE NUMBER WHEN THE TRANSMITTER IS ADDED. THE CENTRAL STATION WILL NEED TO KNOW THE TYPE AND REPORTING ZONE FOR EACH TRANSMITTER.

14. Installing Multiple Transmitters

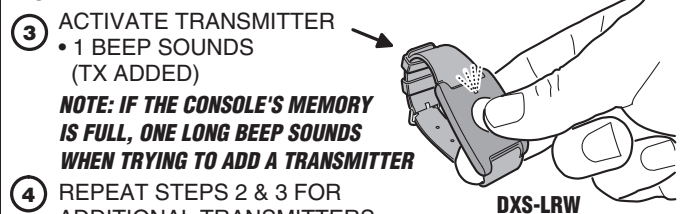
ADDS MULTIPLE TRANSMITTERS



- 1 PRESS TEST BUTTON
 - 4 BEEPS SOUND (TEST MODE)

- 2 PRESS TEST BUTTON AGAIN
 - 5 BEEPS SOUND (ADD TX MODE)

NOTE: EACH TIME THE TEST BUTTON IS PRESSED IN THE ADD TX MODE, THE CONSOLE WILL BE READY TO INSTALL A TRANSMITTER IN THE NEXT AVAILABLE SENSOR ZONE LOCATION. IF THE VB-4B VOICE BOARD IS INSTALLED, THE CONSOLE WILL ANNOUNCE THE SENSOR ZONE LOCATION NUMBER.



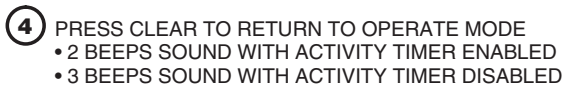
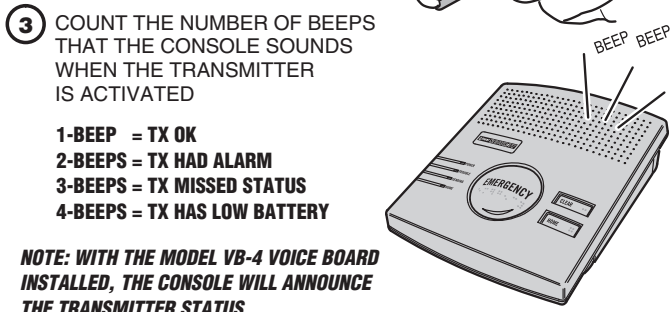
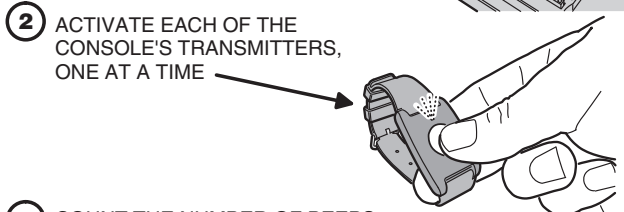
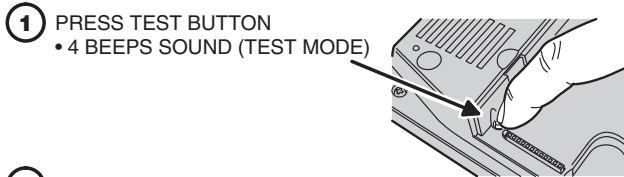
- 3 ACTIVATE TRANSMITTER
 - 1 BEEP SOUNDS (TX ADDED)

NOTE: IF THE CONSOLE'S MEMORY IS FULL, ONE LONG BEEP SOUNDS WHEN TRYING TO ADD A TRANSMITTER

- 4 REPEAT STEPS 2 & 3 FOR ADDITIONAL TRANSMITTERS (UP TO 16 TOTAL)
- 5 PRESS CLEAR TO RETURN TO OPERATE MODE
 - 2 BEEPS SOUND WITH ACTIVITY TIMER ENABLED
 - 3 BEEPS SOUND WITH ACTIVITY TIMER DISABLED
 THE CONSOLE WILL RETURN TO OPERATE MODE AUTOMATICALLY AFTER 3 MINUTES

NOTE: WRITE DOWN EACH TRANSMITTER'S TYPE AND ZONE NUMBER WHEN THE TRANSMITTER IS ADDED. THE CENTRAL STATION WILL NEED TO KNOW THE TYPE AND REPORTING ZONE FOR EACH TRANSMITTER

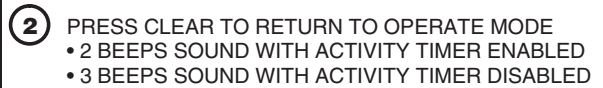
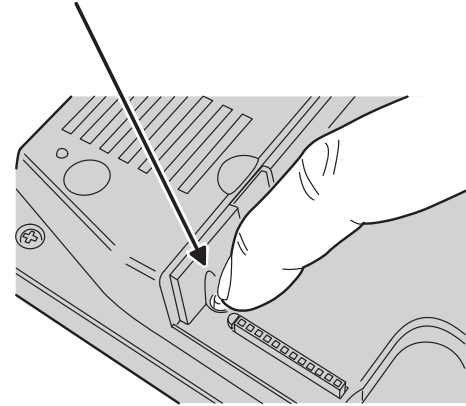
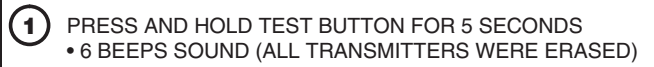
15. Testing Transmitters



THE CONSOLE WILL RETURN TO OPERATE MODE AUTOMATICALLY AFTER 3 MINUTES

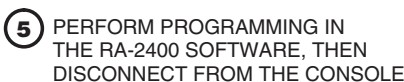
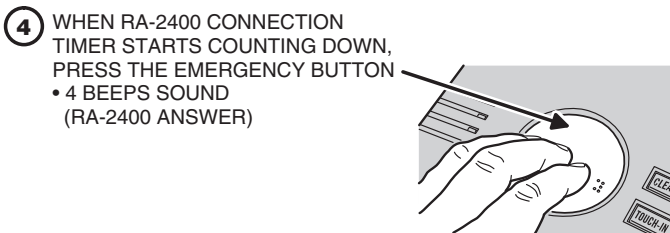
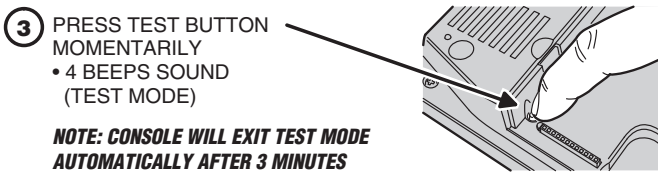
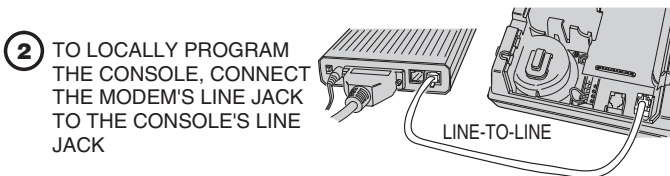
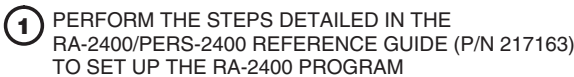
16. Erasing Transmitters

CAUTION: ALL TRANSMITTERS WILL BE ERASED!

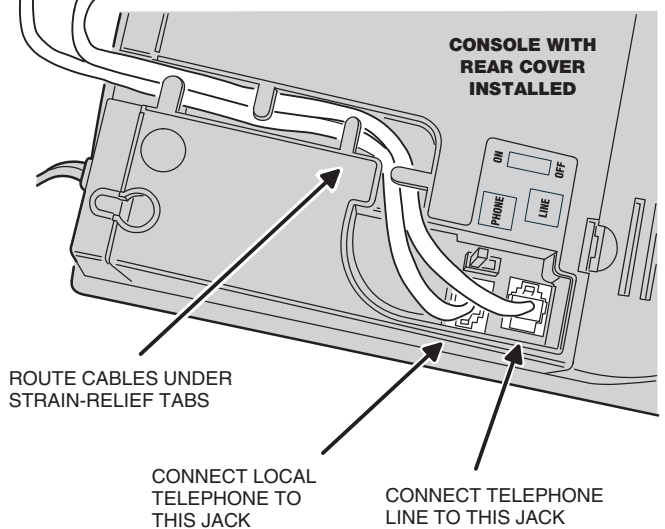
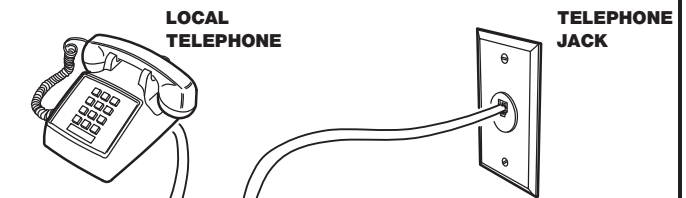


THE CONSOLE WILL RETURN TO OPERATE MODE AUTOMATICALLY AFTER 3 MINUTES

17. Local Programming with RA-2400



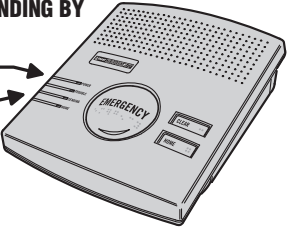
18. Telephone Connections



19. System Operation

CONSOLE STANDING BY

POWER LIGHT IS ON
OTHER LIGHTS ARE OFF

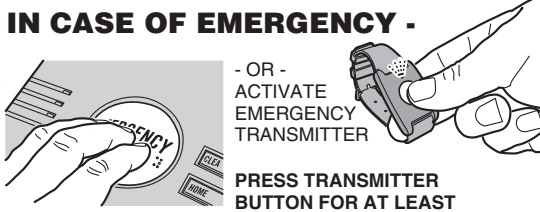


- IN CASE OF EMERGENCY -

PRESS AND MOMENTIARILY HOLD EMERGENCY BUTTON

- OR -
ACTIVATE EMERGENCY TRANSMITTER

PRESS TRANSMITTER BUTTON FOR AT LEAST 2 SECONDS

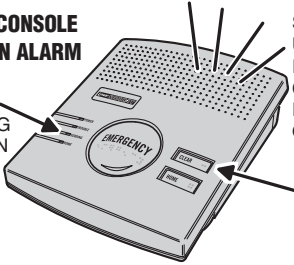


CONSOLE IN ALARM

SENDING LIGHT FLASHES DURING COMMUNICATION

SIREN SOUNDS UNTIL CLEAR BUTTON IS PRESSED, CENTRAL STATION REPORT IS COMPLETE, OR SIREN TIME EXPIRES

PRESS CLEAR TO STOP SIREN (ADDS CANCEL TO ALARM REPORT IN PROGRESS)



21. Audio Board Operation

1 PROGRAM THE CONSOLE FOR THE DESIRED AUDIO MODE:

- LISTEN-ONLY
- 2-WAY MANUAL
- 2-WAY FULL DUPLEX

2 AFTER THE CENTRAL STATION OPERATOR ACKNOWLEDGES THE COMMUNICATOR'S REPORT, THE CONSOLE WILL STOP ITS SIREN AND SWITCH TO THE AUDIO MODE FOR 90 SECONDS

3 **CENTRAL STATION OPERATOR:**
USE THESE KEYS ON A TELEPHONE SET CONNECTED TO THE CENTRAL STATION LINE TO CONTROL THE AUDIO MODULE

ALL AUDIO MODES { **9** PRESS "9" TO DISCONNECT THE CALL

2-WAY MANUAL AUDIO MODE { **3** PRESS "3" TO LISTEN

1 PRESS "1" TO TALK

THE "1" AND "3" KEYS ARE NOT USED IN LISTEN-ONLY AUDIO MODE

THE "1" AND "3" KEYS CAN BE USED IN FULL DUPLEX MODE. THE MODULE WILL SWITCH TO 2-WAY MANUAL MODE. PRESSING "8" RESTORES FULL DUPLEX MODE.

PRESSING ANY KEY OTHER THAN "9" WILL EXTEND THE AUDIO TIME 90 MORE SECONDS

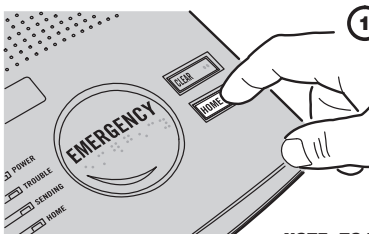
NOTE: TO USE THE AUDIO MODES, THE MODEL VB-4B AUDIO MODULE MUST BE INSTALLED IN THE CONSOLE

20. Activity Timer

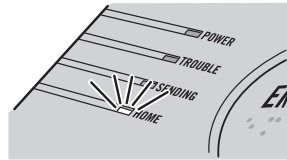
1 **ENABLING THE ACTIVITY TIMER**
PRESS THE HOME BUTTON FOR 5 SECONDS TO TURN THE ACTIVITY TIMER ON

NOTE: THE ACTIVITY TIMER CAN BE ENABLED FOR 8, 12, OR 24 HOURS, OR DISABLED BY PROGRAMMING

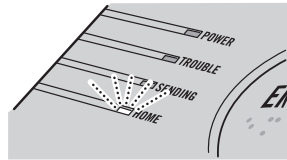
NOTE: TO TURN THE ACTIVITY TIMER OFF, PRESS THE HOME BUTTON FOR FIVE SECONDS



2 **ACTIVITY TIMER RUNNING**
THE HOME INDICATOR WILL LIGHT, SHOWING THAT THE ACTIVITY TIMER IS ENABLED




3 **TIME RUNNING OUT**
THE HOME INDICATOR WILL BLINK & A SHORT BEEP SOUNDS EVERY 10 SECONDS WHEN LESS THAN 15 MINUTES OF TIME REMAIN



4 **RESETING ACTIVITY TIMER**
THE SUBSCRIBER NEEDS TO PRESS THE HOME BUTTON OR TRIGGER AN ACTIVITY TRANSMITTER BEFORE THE TIMER EXPIRES TO PREVENT AN INACTIVITY REPORT

PRESSING THE HOME BUTTON RESTARTS THE TIMER

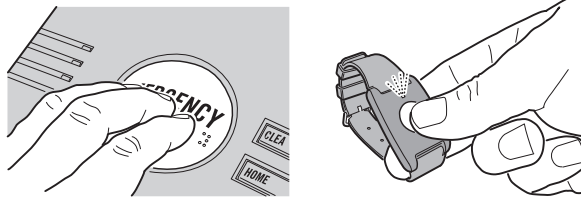


22. Speakerphone Operation

1 PROGRAM THE CONSOLE TO ENABLE SPEAKERPHONE MODE

NOTE: SPEAKERPHONE MODE CAN ONLY BE USED ON INCOMING CALLS AND WILL NOT FUNCTION WHEN THE CONSOLE IS OPERATING FROM BACKUP BATTERY POWER. ATTEMPTING TO ANSWER WHILE THE CONSOLE IS ON BACKUP POWER WILL CAUSE AN EMERGENCY ALARM.

2 WHILE THE TELEPHONE IS RINGING, ACTIVATING AN EMERGENCY TRANSMITTER OR PRESSING THE EMERGENCY BUTTON WILL SEIZE THE TELEPHONE LINE



3 THE AUDIO BOARD WILL BEGIN 2-WAY FULL DUPLEX MODE FOR AUDIO COMMUNICATIONS

WARNING: THE CONSOLE WILL NOT BE ABLE TO REPORT AN EMERGENCY WHILE THE SPEAKERPHONE MODE IS ACTIVE

NOTE: TO REPORT AN EMERGENCY WHEN THE SPEAKERPHONE IS IN USE, PRESS EITHER THE EMERGENCY BUTTON OR THE BUTTON ON AN EMERGENCY TRANSMITTER TO END THE PHONE CALL AND THEN PRESS ONE OF THESE BUTTONS AGAIN TO REPORT THE EMERGENCY.

4 THE AUDIO BOARD WILL END AUDIO COMMUNICATIONS WHEN EITHER:

- THE EMERGENCY BUTTON IS PRESSED
- ANY EMERGENCY TRANSMITTER IS ACTIVATED
- THE AUTO-DISCONNECT TIMER RUNS OUT

NOTE: TO USE THE SPEAKERPHONE MODE, THE MODEL VB-4B AUDIO MODULE MUST BE INSTALLED IN THE CONSOLE

23. Supervisory Conditions

TRANSMITTER LOW BATTERY TROUBLE

WHEN A TRANSMITTER SENDS A LOW BATTERY SIGNAL THE CONSOLE'S TROUBLE INDICATOR WILL BLINK SLOWLY.

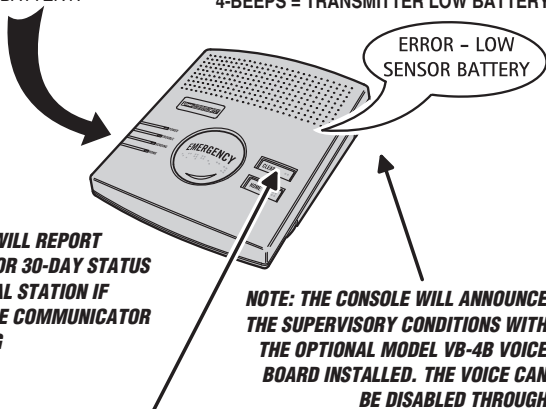
TRANSMITTER SUPERVISORY TROUBLE

IF A TRANSMITTER PROGRAMMED AS SUPERVISED FAILS TO REPORT STATUS IN A 24 HOUR PERIOD, THE CONSOLE'S TROUBLE INDICATOR WILL LIGHT.

CONSOLE BACKUP BATTERY TROUBLE

THE CONSOLE WILL TEST ITS BACKUP BATTERY EVERY 8 HOURS. IF THE BATTERY TESTS LOW, THE POWER INDICATOR WILL BLINK SLOWLY WHILE THE CONSOLE CHARGES THE BATTERY.

WHEN TROUBLE EXISTS, THE CONSOLE WILL BEEP EVERY HOUR UNTIL CLEARED:
2-BEEPS = CONSOLE LOW BATTERY
3-BEEPS = TRANSMITTER SUPERVISORY
4-BEEPS = TRANSMITTER LOW BATTERY



THE CONSOLE WILL REPORT TROUBLE AND/OR 30-DAY STATUS TO THE CENTRAL STATION IF ENABLED IN THE COMMUNICATOR PROGRAMMING

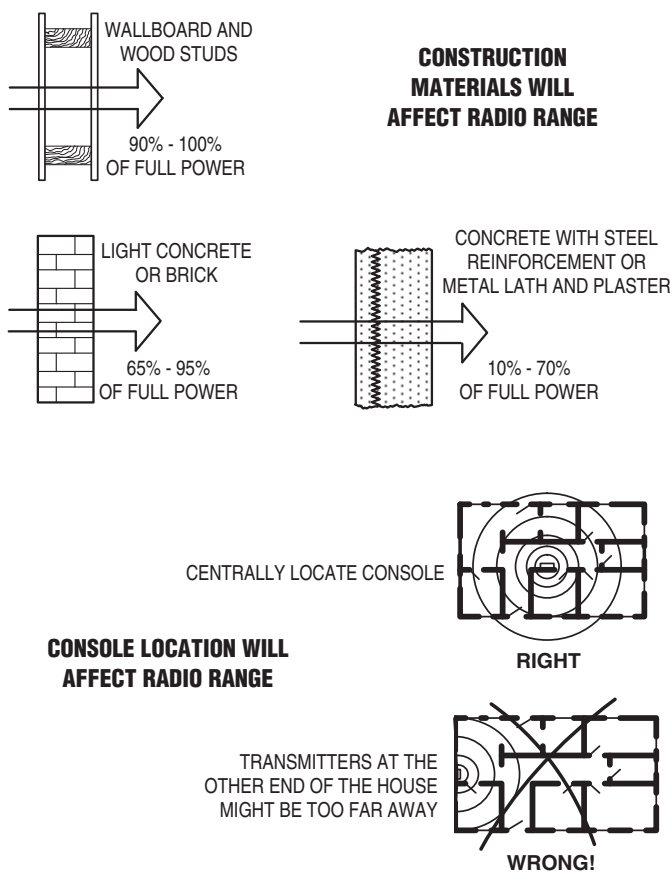
NOTE: THE CONSOLE WILL ANNOUNCE THE SUPERVISORY CONDITIONS WITH THE OPTIONAL MODEL VB-4B VOICE BOARD INSTALLED. THE VOICE CAN BE DISABLED THROUGH PROGRAMMING

CLEARING TROUBLE INDICATIONS

PRESS THE CLEAR BUTTON TO STOP TROUBLE INDICATORS AND SOUNDERS

NOTE: THE TROUBLE CONDITION WILL LIKELY OCCUR AGAIN UNTIL THE PROBLEM IS FIXED

24. Wireless Installation Tips



25. Specifications

CODING FORMATS

DX CODE 24-BIT A1D PPM 1,048,567 CODES
 DXS CODE 24-BIT A1D PPM 1,048,567 CODES

POWER REQUIREMENTS

PRIMARY SUPPLY 16 VAC 1.25 AMP PLUG-IN TRANSFORMER
 BACKUP SUPPLY 12 VOLT 1.2 AMP/HOUR BATTERY
 NORMAL OPERATING CURRENT 80 mA
 ALARM OPERATING CURRENT 120 mA
 BACKUP OPERATION DURATION 32 HOURS MINIMUM
 BATTERY LIFE EXPECTED 3 YEARS
 BACKUP SUPPLY OPERATING CURRENT 32 mA

RF CHARACTERISTICS

RECEIVER TYPE DUAL-DIVERSITY SUPERHETERODYNE
 RF SENSITIVITY -100 dBm TYPICAL
 RADIO FREQUENCY 315 Mhz
 MAXIMUM RANGE 400 FEET LINE-OF-SIGHT, OPEN RANGE
 UL LISTED FOR 150'

COMMUNICATOR

COMMUNICATOR FORMATS 4 BY 2 (GENERAL OR POINT-TO-POINT), ADEMCO CONTACT ID
 UL TESTED WITH SURGARD SGMLRG-DG CENTRAL STATION RECEIVER
 TONE OR PULSE
 DIALING DELAY 0 OR 15 SECONDS
 REMOTE ACCESS PASSWORD 6 DIGITS
 ACCOUNT NUMBER LENGTH 4 DIGITS
 PRIMARY TELEPHONE NUMBER 20 DIGITS
 SECONDARY TELEPHONE NUMBER 20 DIGITS
 SUPERVISORY TELEPHONE NUMBER 20 DIGITS
 CONSOLE STATUS REPORT OPTIONAL 1, 7 OR 30 DAY REPORT

NOTE: THE INSTALLER MUST VERIFY COMPATIBILITY BETWEEN THE PERS-2400B AND THE UL LISTED DIGITAL ALARM COMMUNICATOR RECEIVER

CONSOLE

OPERATING TEMPERATURE 32°-100° F (0-50° C)
 EMERGENCY ALARM DURATION 1-30 MINUTES
 ACTIVITY TIMER PERIOD 8, 12, OR 24 HOURS
 AUDIO LISTEN-ONLY, 2-WAY MANUAL, 2-WAY DUPLEX, SPEAKERPHONE
 RELAY OUTPUT N.O. @ 24 VOLT AC/DC 1 AMP MAXIMUM, NEC CLASS II CIRCUITRY

26. Linear Limited Warranty

This Linear product is warranted against defects in material and workmanship for twelve (12) months. **This warranty extends only to wholesale customers** who buy direct from Linear or through Linear's normal distribution channels. Linear does not warrant this product to consumers. Consumers should inquire from their selling dealer as to the nature of the dealer's warranty, if any. **There are no obligations or liabilities on the part of Linear LLC for consequential damages arising out of or in connection with use or performance of this product or other indirect damages with respect to loss of property, revenue, or profit, or cost of removal, installation, or reinstallation.** All implied warranties, including implied warranties for merchantability and implied warranties for fitness, are valid only until the warranty expires. **This Linear LLC Warranty is in lieu of all other warranties express or implied.**

All products returned for warranty service require a Return Product Authorization Number (RPA#). Contact Linear Returns at 1-855-546-3351 for an RPA# and other important details.

Important Wireless Information

Linear radio controls provide a reliable communications link and fill an important need in portable wireless signaling. However, there are some limitations which must be observed.

- For U.S. installations only: The radios are required to comply with FCC Rules and Regulations as Part 15 devices. As such, they have limited transmitter power and therefore limited range.
- A receiver cannot respond to more than one transmitted signal at a time and may be blocked by radio signals that occur on or near their operating frequencies, regardless of code settings.
- Changes or modifications to the device may void FCC compliance.
- Infrequently used radio links should be tested regularly to protect against undetected interference or fault.
- A general knowledge of radio and its vagaries should be gained prior to acting as a wholesale distributor or dealer, and these facts should be communicated to the ultimate users.

This device complies with FCC Part 15 and Canada Rules and Regulations. Operation is subject to the following two conditions: (1) This device may not cause harmful interference and (2) this device must accept any interference received, including interference that may cause undesired operation.

Le présent appareil est conforme aux CNR d'Industrie Canada applicables aux appareils radio exempts de licence. L'exploitation est autorisée aux deux conditions suivantes : (1) l'appareil ne doit pas produire de brouillage, et (2) l'utilisateur de l'appareil doit accepter tout brouillage radioélectrique subi, même si le brouillage est susceptible d'en compromettre le fonctionnement.

Linear[®]
Building On Innovation.