

Quick Start Guide

NWZ-WS613/WS615



Main Functions of Your Walkman

Listening to music on your Walkman

Enjoy music transferred to your Walkman by operating the buttons on the Walkman.

Operating your Walkman by remote

Just turn the Remote Commander on and you can operate your Walkman by remote.

Using your Walkman with your smartphone

Connect your smartphone and your Walkman via a Bluetooth connection so you can listen to music stored on your smartphone using the Walkman or answer incoming calls to the smartphone. Mix mode allows you to listen to sounds from a smartphone application and the Walkman at the same time. You can also use SongPal, a smartphone application that allows you to operate the Walkman using your smartphone.

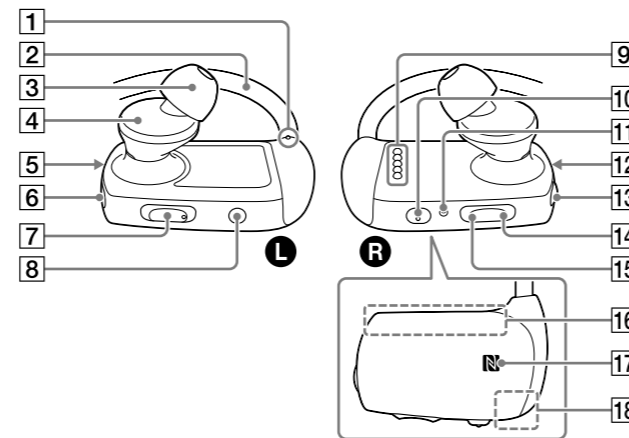
Refer to the Help Guide installed on your computer or at the URL mentioned in the "About the manuals" section on the cover page of this manual for details.

Contents

Please check the items in the package.

- Walkman (1)
- Remote Commander (1)
- USB cradle (1)
- Earbuds (1 set)
- Swimming earbuds (1 set)
- Adjustment band (1)
- Holder (1)
- Quick Start Guide (this manual)
- Using your Walkman while Swimming

Parts and Controls



The illustrations shown are for reference only and may differ from the actual product.

- 1 Tactile dot**
- 2 Neckband**
- 3 Earbud**
- 4 Headphone section**
- 5 Bluetooth lamp**
- 6 Bluetooth button**
- 7 VOL (Volume) +*/- button**
Press the VOL + button to turn up and the VOL - button to turn down the volume.
- 8 MODE button**
- 9 Terminals**
- 10 Play button***
- 11 RESET button**
- 12 OPR (Operation) lamp**
- 13 Power button**
- 14 Previous button**
- 15 Next button**
- 16 Built-in Bluetooth antenna**
- 17 N-mark**
- 18 Built-in microphone**

*1 There are tactile dots. Use them to help with button operations.

About volume operation (Only for countries/areas complying with European and Korean Directives)

The voice guidance "Check the volume level" is meant to protect your ears when you turn the volume up to a level that is harmful for your ears for the first time. You can cancel the alarm and warning by pressing any button.

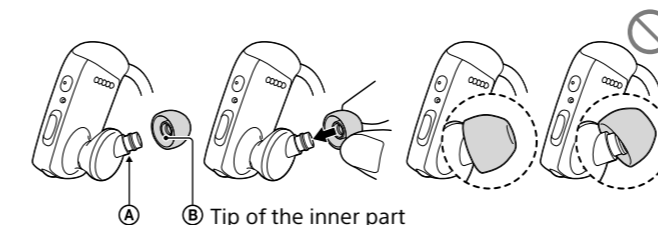
Note

- You can turn up the volume after canceling the alarm and warning.
- After the initial warning, the alarm and warning repeat every 20 cumulative hours that the volume is set to a level that is harmful for your ears. When this happens, the volume is turned down automatically.
- If the volume is set to a level that is harmful for your ears and you turn off the Walkman, the volume is turned down to a level that is safe for your ears automatically.

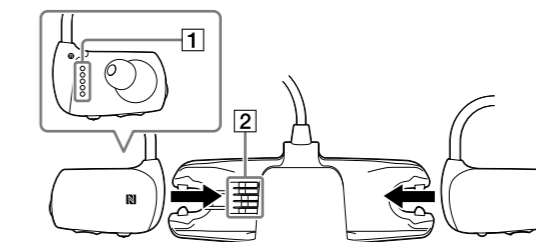
How to install the earbuds

To enjoy better sound quality, or to fit your ears, change the size of the earbuds or adjust the earbud position to fit comfortably and snugly in your left and right ears separately. Optional replacement earbuds can be ordered from your nearest Sony dealer.

- Install the earbuds onto the headphones so that the tip of the inner part of the earbuds (B) fits into the (A) position on the projection of the headphones.
- Make sure that the earbuds fit straight on, not at an angle, to prevent the earbuds from detaching and remaining in your ears.



Attaching Your Walkman to the USB Cradle (Supplied) and Charging the Battery



1 Dry and clean the terminals of your Walkman (1) using a soft dry cloth, if the terminal is wet or dirty.

2 Attach your Walkman to the USB cradle in the order of the left (L) part first, then the right (R) part.

Make sure that the terminals of your Walkman (1) and the USB cradle (2) are in contact with each other.

3 Connect your Walkman to an operating computer using the USB cradle.

It takes about 1.5 hours to fully charge the battery.

Note

- To prevent battery deterioration, charge the battery at least once every six months or every year.

Hint

- The Remote Commander cannot be charged because a lithium coin cell battery is used in it. If the remaining battery power is low or insufficient, replace the battery of the Remote Commander. For details on how to replace the battery of the Remote Commander, refer to the Help Guide installed on your computer or at the URL mentioned in the "About the manuals" section on the cover page of this manual.

How to Install and Read the Help Guide

Install the "Help Guide" on your computer. This contains basic operations of your Walkman, the customer support website URL, and how to transfer content such as music to the Walkman.

- 1 Connect your Walkman to a running computer.**
- 2 Open the following folders and double-click the executable file on your Walkman.**

- Windows 7 or earlier: [Start] – [Computer] – [WALKMAN] – [FOR_WINDOWS] – [Help_Guide_Installer(.exe)].
- Windows 8: [Start screen] – [Desktop] – [File Explorer] – [Computer] – [WALKMAN] – [FOR_WINDOWS] – [Help_Guide_Installer(.exe)].
- Windows 8.1: [Desktop] – [File Explorer] – [This PC] – [WALKMAN] – [FOR_WINDOWS] – [Help_Guide_Installer(.exe)].
- Mac: [Finder] – [WALKMAN] – [FOR_MAC] – [Help_Guide_Installer_for_mac].

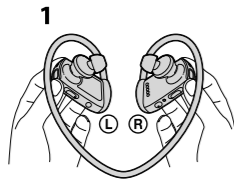
- 3 Follow the on-screen instructions to complete the installation.**
- 4 To read the Help Guide, double-click the shortcut or the alias icon generated on your computer.**



* 4 5 3 6 9 0 5 1 1 * (1)

How to Place Your Walkman on Your Ears

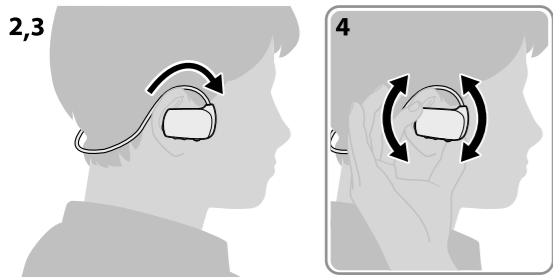
- 1 Check the left (L) and right (R) parts of your Walkman.



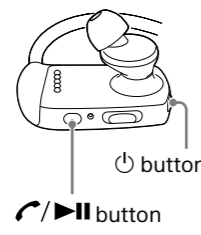
- 2 Hang the neckband over the top of your ears and behind your head.

- 3 Place the headphone sections into your ears.

- 4 Adjust your Walkman so it feels comfortable.



Playing Music

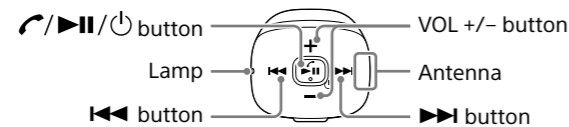


- 1 Connect your Walkman to a running computer via the USB cradle and transfer music to the Walkman.
- 2 Press and hold the power button located on the right (R) part for 3 seconds to turn on your Walkman. The OPR lamp turns green after blinking in orange.
- 3 Press the play/pause button located on the right (R) part.

Hint

- For detailed instructions for transferring music to your Walkman and listening to music stored on your smartphone, refer to the Help Guide.
- To turn off your Walkman, press and hold the power button for 3 seconds.

Using the Remote Commander (Supplied)



- 1 Turn your Walkman on.

- 2 Turn the Remote Commander on.

The Remote Commander is turned on by pressing and holding the play/pause/power button for 2 seconds, and the lamp starts blinking. When the Remote Commander is connected to your Walkman, the lamp goes off.

- 3 Press the desired button to operate your Walkman.

Pairing and Connecting to Your Smartphone

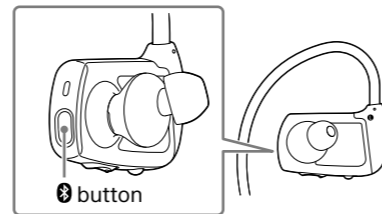
Pairing can be started only when the Bluetooth mode of your Walkman is off.

- 1 Put your Walkman in pairing mode.

Press and hold the Bluetooth button located on the left (L) part for 7 seconds.

The Bluetooth lamp located on the left (L) part blinks in blue and red quickly alternately.

When connecting your Walkman and smartphone from the second time onwards, press and hold the Bluetooth button for 2 seconds.



- 2 On your smartphone, turn on the Bluetooth function, and find your Walkman on the Bluetooth settings screen.

Follow the on-screen instructions to complete the settings. When the list of detected devices appears, select [NWZ-WS613] or [NWZ-WS615]. If passkey input is required, input "0000."

Your Walkman and the smartphone are registered to each other and a connection is made.

Hint

- You can pair your Walkman and smartphone using the one-touch (NFC) function. Refer to the Help Guide installed on your computer or at the URL mentioned in the "About the manuals" section on the cover page of this manual for details.

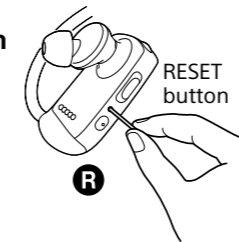
Troubleshooting

If your Walkman does not function as expected, try the following steps to resolve the issue.

- 1 Find the symptoms of the issue in "Troubleshooting" in the Help Guide (HTML document), and try any corrective actions listed.

- 2 Connect your Walkman to your computer to charge the battery.

- 3 Press the RESET button with a pen or paper clip, etc.



Symptom & Remedy

The computer does not recognize your Walkman.

- Attach your Walkman to the USB cradle (supplied) properly and firmly. Charging will start (the OPR lamp lights up in orange) even if the connection was not made properly, but there is a possibility that the computer has not recognized the Walkman. In such a case, remove the Walkman from the USB cradle and then attach to the USB cradle again.
- If the remaining battery power is low or insufficient, charge the battery.
- When you use your Walkman for the first time, or if you have not used the Walkman for a long time, it may take a few minutes to be recognized by the computer, even if charging has already started (the OPR lamp lights up in orange). Check that the computer recognizes the Walkman after you have connected it to the computer for about 10 minutes.

You cannot register (pair) to a Bluetooth device.

- If the support profiles are different, your Walkman and Bluetooth device cannot be paired. For more information, refer to the "Specification" section on the Help Guide.

Symptom & Remedy

You cannot connect using the Bluetooth function.

- Check that the Bluetooth function is activated on the smartphone and your Walkman.
- Check that the model name of your Walkman is shown as being connected on the [Settings] - [Bluetooth] screen of the smartphone. If the Walkman is not connected, tap the model name.

You cannot operate your Walkman by the Remote Commander (supplied).

- Make sure that the Remote Commander is turned on.
- Make sure that your Walkman is turned on.
- Reset the Remote Commander and your Walkman. For more information, refer to the "You cannot operate your Walkman by the Remote Commander." section on the Help Guide.
- You cannot use the Remote Commander when it is wet. Dry the Remote Commander using a dry cloth.
- Replace the battery of the Remote Commander. For more information, refer to the "Replacing the battery of the Remote Commander" section on the Help Guide.

Precautions

About the in-ear headphones

The earbuds seal your ears. Therefore, be aware that there is a risk of damage to your ears or eardrums if strong pressure is applied to the earbuds or the earbuds are suddenly removed from your ears. After use, be sure to take the earbuds off your ears gently.

About the headphones

- Avoid playing the unit at so loud a volume that extended play might affect your hearing.
- At a high volume outside sounds may become inaudible. Avoid listening to the unit in situations where hearing must not be impaired, for example, while driving or cycling.
- As the headphones are of open-air design, sounds go out through the headphones. Remember not to disturb those close to you.

Owner's Record

The model and serial numbers are located on the back of the player. Record them in the space provided below. Refer to these numbers in the spaces whenever you call upon your Sony dealer regarding this product.

Model No. _____

Serial No. _____

License and Trademark Notice

- For information on laws, regulations and trademark rights, refer to "Important Information" contained in the supplied software. To read it, install the supplied software on your computer.
- Apple, the Apple logo, iPhone, iPod, iPod touch, iTunes, Mac, iOS and OS X are trademarks of Apple Inc., registered in the U.S. and other countries. App Store is a service mark of Apple Inc.
- "Made for iPod," and "Made for iPhone," mean that an electronic accessory has been designed to connect specifically to iPod, or iPhone, respectively, and has been certified by the developer to meet Apple performance standards. Apple is not responsible for the operation of this device or its compliance with safety and regulatory standards. Please note that the use of this accessory with iPod, or iPhone may affect wireless performance.
- Compatible iPhone/iPod models
Bluetooth technology works with iPhone 5s, iPhone 5c, iPhone 5, iPhone 4s, iPhone 4, iPhone 3GS, and iPod touch (4th and 5th generation).

