

 **CELESTRON**[®]



NEXIMAGE[®] 



NexImage Burst
USER'S MANUAL

Model #95518, #95519

ENGLISH

Congratulations on your purchase of the Celestron NexImage Burst Solar System imaging camera.

Your NexImage camera comes with the following:

- + NexImage Burst Camera
- + 1.25" nose piece
- + CD including NexImage iCap and RegiStax processing software
- + USB Cable

Fig 1



Recommended Minimum System requirements:

- + Pentium IV, 2.0 GHz, 1GB RAM
- + Graphics card with 24 or 32 bit
- + Windows XP, Windows Vista, Windows 7 (32 & 64 bit)
- + DirectX 9.0c or higher

Quick Start

1. Place the CD into your computer's CD-ROM drive.
2. Install both the NexImage iCap and RegiStax software onto your computer.
3. Thread the 1.25" nose piece into the body of the NexImage camera. **See Fig 2.**
4. Slide the 1.25" nose piece of the camera into the eyepiece barrel of your telescope. **See Fig 3.**
5. Plug the small end of the USB cable into the port on the back of the camera.
6. Plug the other end of the USB cable into a USB port on your computer. Once connected, the Found New Hardware message will appear. Follow the Installation Wizard until the device has been successfully installed.



Fig 2



Fig 3

Capturing Images

1. Double-click the NexImage iCap icon on your computer's desktop to start the program. **See Fig 4.**
2. If the NexImage Burst camera is not already detected, select the camera and press OK. **See Fig 5.**
3. Select an easy target like the Moon to begin with. Center and focus your telescope on the specific feature you wish to image.
4. You should be able to see light displayed in the Preview window of the iCap software.
5. Use the telescopes focuser to focus the image until the object is visible and sharp. **See Fig 6.**



Fig 4

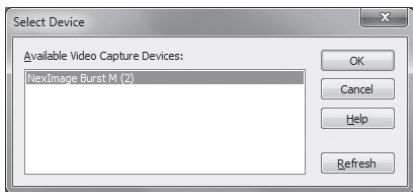


Fig 5

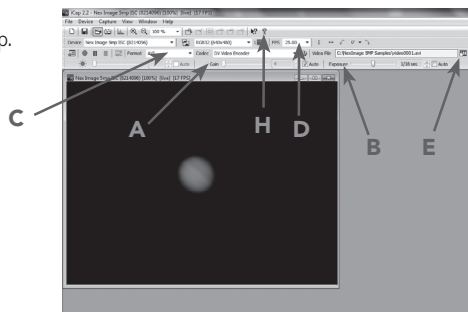


Fig 6

6. Use the Gain (A) and Exposure (B) settings to make sure that the image is not underexposed or overexposed .
7. Select the video format (C). For the highest resolution, select 1280x960.
8. Select the frames per second (FPS) for your video. The FPS box (D) will always display the maximum frames per second for the selected resolution setting.
9. Press the Video File button (E) to bring up the Recording Setting box. **See Fig 7 & 8.**



Fig 7

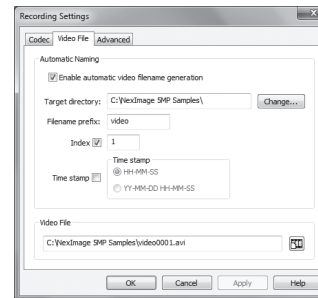
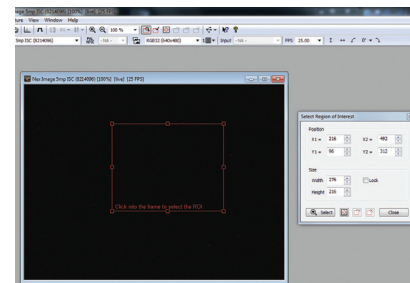


Fig 8



ROI Subframing

If the object you are imaging does not consume most of the field of view, you can select an ROI (region of interest) to increase the framerate and save disk space. Go to the Device menu and select ROI → Specify, or click on the ROI icon. Draw the ROI with your mouse, then click inside the red box to set the ROI. The ROI can be reset any time by clicking the reset icon or going back to the Device menu.

10. Press the Video File **(E)** to select the destination location for your video.
11. Click on the Advanced tab. You can either select the amount of time or number of frames you wish to record. **See Fig 9.**
12. Press the Record button **(F)** when ready to begin recording video. **See Fig 10.**
13. Once recording is complete, press the check video button **(G)** to view the capture image.

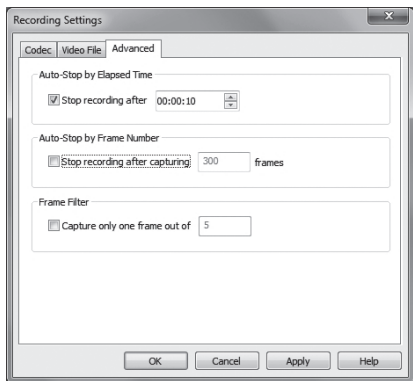


Fig 9



Fig 10

See the Help file **(H)** to learn more about the advanced features of iCap software. Now that your video is captured, you are ready to process it into one high-resolution image.

Processing Images

1. Double-click the RegiStax icon on your computer's desktop to start the program. **See Fig 11.**
2. Press the Select button **(A)** and select the video that was just recorded. **See Fig 12.**
3. Press the Set Alignment Points button **(B)** to have RegiStax automatically select the alignment positions over your image.
4. Press the **Align** button **(C)** to begin the alignment process.
5. Select the Best Frame option under the Limit Setup box **(D)** and enter a number that represents one-half of the number of image frames that were captured, i.e. if 300 frames were captured then enter 150. Press the **Limit** button **(E).**



Fig 11

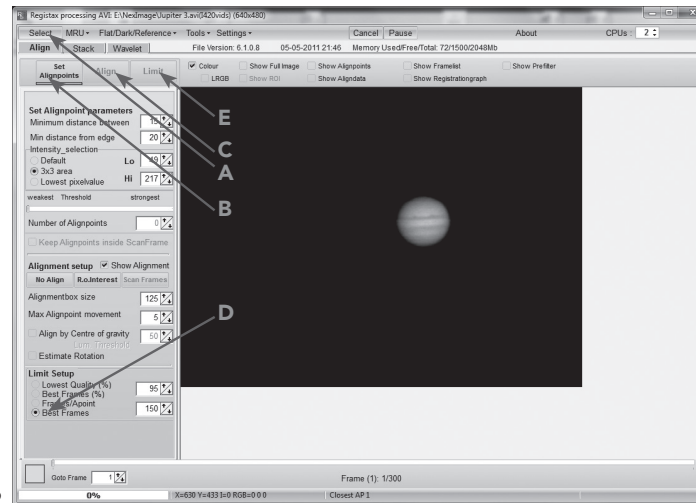


Fig 12

6. You will automatically advance to the **Stack** screen. Accept the default settings and press the **Stack** button (F). See Fig 13.

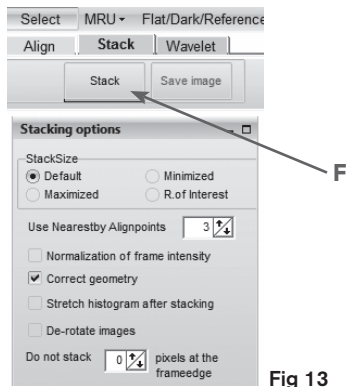


Fig 13

7. Next, move to the wavelet processing screen by clicking on the Wavelet tab (G). See Fig 14.
8. On the wavelet page, use the wavelet-sliders (H) to enhance the image. The power of RegiStax lies in the Wavelets settings. This is a special filtering technique that is very good for enhancing details in images. Each wavelet layer carries part of the image within it. The lower numbered wavelets control the fine detail stored in the image, while the larger numbered wavelets control the coarse detail. Each layer can be adjusted individually to reveal the desired amount of detail for your image.
9. Finally, press the **Save Image** button to save the final image.

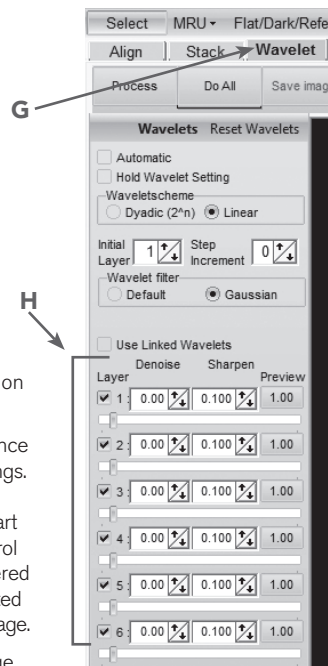


Fig 14

To explore the many other features of RegiStax and view helpful tutorials, visit the RegiStax homepage at: <http://www.astronomie.be/registax/index.html>

How NexImage Works

NexImage uses a light-sensitive imaging sensor to capture streaming video of any Solar System object. Using the included software, you can separate the video into hundreds of individual images (frames) and digitally stack them to significantly reduce the electric “noise” inherent in video chips and bring out the unseen fine detail (signal) hidden within your image. The NexImage camera takes advantage of the fact that the signal-to-noise ratio of your stacked composite image is proportional to the square root of the number of frames combined. This means that stacking as few as 16 frames will reduce the grainy noise of the composite image by 4 times. While stacking as many 900 frames will improve the image by 30 times! However, stacking the individual frames is only half the power of the NexImage imager. With the included software package, each individual frame is analyzed for quality to filter out those frames most affected (blurred) by poor atmospheric “seeing.” This form of after-the-fact adaptive optics leaves only the sharpest, clearest frames to be stacked and aligned into a high-quality image. Finally, powerful processing features automatically break the image up into individual unsharp mask layers that can be used to bring out tremendous detail and reveal final images that will rival those taken with astronomical CCD cameras costing thousands of dollars.

The Basics

Focusing

As with all astrophotography, sharp focus is essential for high-quality results. Although there are many techniques and devices for focusing your telescope, the human eye still remains one of the best detectors of subtle changes in detail. One advantage that video imaging has over imaging with more sophisticated (and expensive) CCD cameras is the speed with which it can display an image. Focusing NexImage is more like focusing an eyepiece than focusing a CCD camera. Unlike long-exposure cameras, you don’t have to wait many seconds to see the effect of a focus change using NexImage.

Focusing Tips

To achieve best focus, concentrate on a high contrast feature of the object you are imaging. Focusing on small features such as a moon's shadow on Jupiter or Cassini's division in the rings of Saturn will guarantee best focus across the entire image.

Once the frames of your video are stacked, the overall brightness of the composite (stacked) image is usually brighter than its individual component frames. For this reason, it is best to keep the brightness of the video image seen on the screen dimmer than you would normally desire. It is important that no part of the image is overexposed to assure the maximum amount of detail in the final composite image.

Collimation

No matter what type of telescope you image with, poor collimation (alignment of the optics) will ruin your chances for a good image. Before you begin imaging, always check the collimation of your instrument and make adjustments if necessary. Refer to your telescope's owner's manual for instruction in collimating the optics.

Finding Objects

At first it can be difficult to locate individual planets due to their relative brightness. To make it easier to initially find your object in the imaging window, increase the brightness and gain controls on the Exposure toolbar. This will allow you to better see the object as it passes through the imaging window. Once you have located and centered the object, you can adjust the setting until the object is at the desired brightness and contrast.

How long to take Streaming Video

At first you may think that the more frames you record, the better. However, there are some limitation to the duration of video and the amount of frames you can acquire. Resolution and file size can both limit the length of time of your video.

Since the NexImage will combine as many sharp frames as possible to achieve one high-quality image, you don't want to take so many images that you start to detect the rotation of the planet, especially on Jupiter which makes one complete rotation in under 10 hours!

Individual frames of a high-resolution video can have large file sizes. Hundreds of these frames can quickly consume an entire hard drive. We recommend saving your video data onto a CD-ROM. This way, you can have a library of files stored for processing without consuming hard disk space.

Autoguiding

Your NexImage Burst can be used as an autoguiding camera when used in conjunction with an off-axis guider or piggyback guidescope. NexImage is compatible with many autoguiding software such as MetaGuide (www.astrogeeks.com/Bliss/MetaGuide), and a guider port interface such as GPUSB from Shoestring Astronomy (www.store.shoestringastronomy.com).

SPECIFICATIONS:	
Sensor	1/3-inch format Aptina AR0132AT CMOS
Camera Resolution	1.2MP (1280 x 960)
Sensor Size	4.8 mm x 3.6 mm
Pixel Size	3.75 mm square
Sensitivity	5.48 V/lux-sec (@550 nm)
USB Cable	High-speed USB 2.0 cable
Back focus with nose piece	13.1 mm
Back focus from threads	10.6 mm

WARRANTY



CELESTRON, LLC. 2835 Columbia Street
Torrance, CA • 90503 U.S.A.
Telephone: 800.421.9649 • www.celestron.com

FCC Note: This equipment has been tested and found to comply with the limits for a Class B digital device, pursuant to part 15 of the FCC Rules. These limits are designed to provide reasonable protection against harmful interference in a residential installation. This equipment generates, uses, and can radiate radio frequency energy and, if not installed and used in accordance with the instructions, may cause harmful interference to radio communications. However, there is no guarantee that interference will not occur in a particular installation. If this equipment does cause harmful interference to radio or television reception, which can be determined by turning the equipment off and on, the user is encouraged to try to correct the interference by one or more of the following measures:

- Reorient or relocate the receiving antenna.
- Increase the separation between the equipment and receiver.
- Connect the equipment into an outlet on a circuit different from that to which the receiver is connected.
- Consult the dealer or an experienced radio/TV technician for help.

This product is designed and intended for use by those 14 years of age and older.

©2014 Celestron. Celestron and Symbol are trademarks of Celestron, LLC. All rights reserved.