

A woman with blonde hair, wearing a blue tank top and denim shorts, is shown from the side, using a backpack sprayer. The sprayer is white and blue, with a black hose and nozzle. She is spraying a large bush of pink flowers. In the background, there is a house with orange walls and white trim, and several red flower boxes hanging from the eaves. The overall scene is bright and sunny.

EZ SPRAYER™

Rechargeable Battery Powered Sprayer

USER MANUAL



Table of Contents

Overview	Page 1
Components	Page 1
Features	Page 1
Technical Information	Page 3
Operating Instructions	Page 3
Operating Notes	Page 4
Component Diagram & Parts List	Page 5
Troubleshooting	Page 7

Thank you for purchasing EZ Sprayer™. Please familiarize yourself with the EZ Sprayer User Manual for proper operation and maintenance of your new sprayer.

OVERVIEW

4 Gallon Battery-Powered backpack/floor use EZ Sprayer™ is designed to withstand the most demanding spraying needs. This heavy duty European-designed sprayer is safe, easy-to-operate & incorporates shoulder straps for use as a backpack sprayer. This sprayer is ideal for applying liquid fertilizer, nutrients, insecticides, fungicides, disinfectants, etc. Powered by a 12V battery, this sprayer is much more efficient than a manual sprayer. EZ Sprayer can be operated continuously for up to 10 hours & spray up to 100 gallons of liquid on a single battery charge which consumes only 0.3 kwh of electricity.

COMPONENTS

The EZ Sprayer consists of a holding tank, a base, a battery, a mini-pump, a charger, a spraying system (rubber tubes, switch, spraying rod, nozzle), shoulder straps and rollers.

FEATURES

- The **HOLDING TANK** is ergonomically designed to comfortably mount on your back.
- Includes a compact **MINI-DIAPHRAGM PUMP** that is light-weight, highly pressurized featuring a pressure limit protection switch and made to last repeated uses.
- Superior **TRIPLE SCREEN PROTECTION** prevents foreign matter and particles from clogging the nozzle. The triple screen can be easily dismantled and cleaned.
- The **UNDER-VOLTAGE ALARM** will go off if the battery power goes below 10.5V. This protects the battery. The included charging adapter can be used as a 12V power supply as well as a charging unit.
- The **CHARGING ADAPTER** features intelligent charging— constant current/constant voltage/maintenance and short-circuit/over-current/inverse-connection protection. The charger indicator lamps are as follows: Red=Charging and Green=Charged/Stand-by.



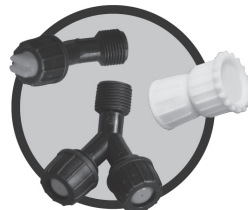
Just slide the automatic lock into place for continual spray use.



The battery charger socket is conveniently located at the base of EZ Sprayer™.



Large fill screen keeps contaminants from getting into the holding tank.



An additional 3 nozzles included! flat fan nozzle, 1 split conical nozzle and 1 four-hole nozzle.



The 4 EZ Glide coasters allow EZ Sprayer™ to be rolled across the floor with ease.



A wand holder is molded into the body of the EZ Sprayer™ — making transport and storage easy.



Ergonomic 4 gallon tank design allows EZ Sprayer™ to comfortably mount on your back.

TECHNICAL INFORMATION

Type: Backpack or Floor Use

Size: 21.6"high X 15"wide X 7.5"deep

Net Weight: 16.75 lbs.

Holding Tank Capacity: 4 Gallons

Pump: Mini Diaphragm Pump

Battery: 12V

Charger: Input~ AC110-240V, 50/60HZ
Output~ DC12V, 2A

Max Pressure: 0.4-0.45Mpa

SPRAY NOZZLE TYPE	PRESSURE Mpa	FLOWRATE GPM
Conical Spray	0.29-0.32	.184-.211
Flat Fan Spray	0.16-0.17	.317-.343
4-Hole Adjustable	0.27-0.28	.211-.224
Double Conical Spray	0.17-0.18	.422-.449

OPERATING INSTRUCTIONS

Be sure to fully charge the battery prior to operation. Fill the holding tank with prepared liquid through the screen and screw on cover. Inspect full holding tank for any leakage. Turn on power switch and squeeze spray lever to start spraying. There are four nozzles to choose from.

- **CONICALSPRAY NOZZLE** sprays a cone shape with fluid flow throughout the cone angle.
- **FLATFAN NOZZLE** sprays a pattern that is a fan configuration in one axis and flat in the other axis.
- **4-HOLEADJUSTABLE NOZZLE** sprays a light misty cone pattern or a full saturated spray pattern depending on the adjustment of the nozzle.
- **DOUBLE CONICAL SPRAY NOZZLE** sprays a dual cone shapes with fluid flow throughout the 2 cone angles.

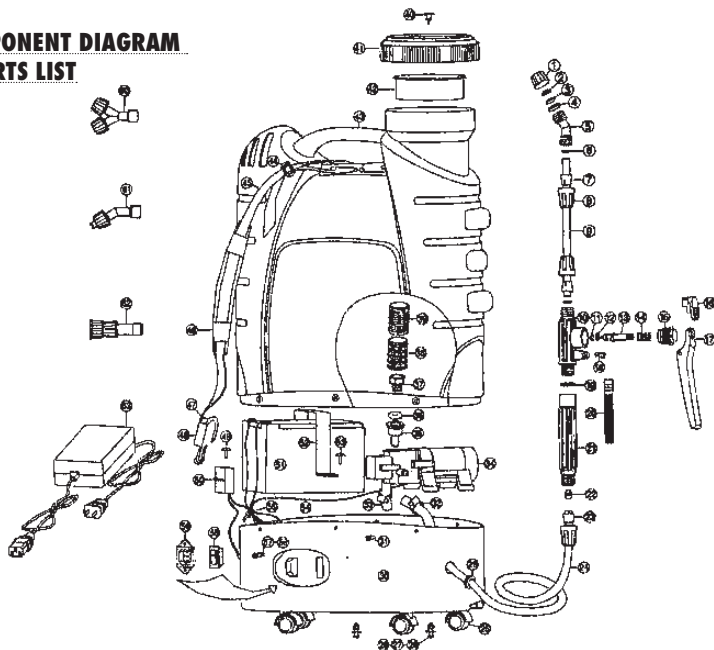
OPERATING NOTES

1. Charge the battery until the charger's Green/"Charged" light comes on indicating that the battery is fully charged.
2. Never operate the sprayer without liquid in it or it may damage the diaphragm.
3. In case of humming sound from inside the sprayer or poor atomization after long time use, recharge the battery. Battery must be charged at least 8 hours. Keep charger in a dry, well ventilated safe place.
4. Test sprayer with water prior to use to assure that no leakage occurs and that proper atomization occurs.

CAUTION

- Always wear a mask and gloves when operating EZ Sprayer. Always remain fully clothed to avoid skin contact with overspray.
- Never spray pesticides against the wind. Never spray at humans, animals or food.
- Never operate this sprayer in temperatures exceeding 112°F or lower than 15°F. Always comply with safety instructions of liquid you are spraying.
- Never use sprayer for strong acid or flammable liquids. Never use high persistent and toxic pesticides on vegetables, fruit trees, herbs or medicinal plants.
- Always clean unit thoroughly after each use to avoid corrosion, clogging and contamination of future spray liquids. Clean exterior by scrubbing with wet cloth. Clean interior by filling holding tank with a small amount of water and shaking before turning on power to discharge. Never immerse machine in water for any reason.
- Switch off power before storage.
- Do not use sprayer near fire.
- Never use sprayer for dry ingredients, use only liquids.
- Unauthorized removal of the charger's housing will void warranty.

COMPONENT DIAGRAM & PARTS LIST



#	DESCRIPTION	QTY	#	DESCRIPTION	QTY	#	DESCRIPTION	QTY
1	Nut for nozzle	1	22	Cover of opening	1	43	Holding tank	1
2	Conical mist spray sheet	1	23	Sleeve of tube	1	44	Strip clamp	2
3	Splitting sheet	1	24	Rubber tube	1	45	Shoulder strap	2
4	Gasket ring for nozzle	1	25	Castor	4	46	Shoulder strap cushion	2
5	Elbow	1	26	Screw M5X20	4	47	Strap clasp	2
6	O ring for spray rod	1	27	Flat washer Ø5	4	48	Strap hook	2
7	Cover for opening	2	28	Nut M5	4	49	Self-tap screw 3.7X10	1
8	Nut for spray rod	3	29	Protective seal	1	50	Alarm	1
9	Spray rod	1	30	Base	1	51	Battery	1
10	Main unit of switch	1	31	Countersink screw M5X15	1	52	Anchor arm	1
11	Gasket of switch	1	32	Tube clamp	1	53	Self-tap screws 3.7X18	2
12	O ring for valve cartridge	1	33	Inlet tube	1	54	Power cables	7
13	Valve cartridge	1	34	Mini pump	1	55	Nylon layer	3
14	Spring	1	35	Tube couplings	1	56	Countersink screw M ₃ X10	2
15	Nut for switch	1	36	O ring	1	57	Nut M ₃	2
16	Limit cap	1	37	Inlet coupling	1	58	Power switch	1
17	Hold-down plate	1	38	Screen frame	1	59	Socket	1
18	Pin of switch	1	39	Screen cover	1	60	Dual nozzle	1
19	Gasket ring for handle	1	40	Vent valve	1	61	Fan spray nozzle	1
20	Switch filter screen	1	41	Holding tank cover	1	62	4-hole adjustable nozzle	1
21	Handle	1	42	Large screen	1	63	Charger	1

TROUBLESHOOTING

PROBLEMS	CAUSES	SOLUTIONS
Motor fails to start after being powered on.	<ul style="list-style-type: none">• Power cable disconnected.• Battery is not charged.• Damaged power switch.	<ul style="list-style-type: none">• Dismantle base to reconnect cables• Charge battery.• Replace switch.
Abnormal motor sound.	<ul style="list-style-type: none">• Fastening screws of pump are loose.	<ul style="list-style-type: none">• Tighten screws.
Leakage occurring at bottom of sprayer base.	<ul style="list-style-type: none">• Inlet and/or outlet tubes of pump are damaged or not securely connected.	<ul style="list-style-type: none">• Dismantle base and tighten tube clamps, and/or replace tubing.
Poor atomization	<ul style="list-style-type: none">• Clogged spray nozzle.• Spray nozzle worn out.• Spray sheet inverted.• Clogged filter screen.• Tubes not securely connected.• Battery low on power.• Air remaining in pump.	<ul style="list-style-type: none">• Clean nozzle.• Replace spray nozzle.• Correct.• Clean.• Tighten.• Alarm not working—replace and recharge.• Remove nozzle or spray rod to discharge air.

TROUBLESHOOTING TIP

*If the unit functions properly then just stops spraying, you probably have an air bubble in the unit.
This is simple to fix.*

- ➊ Remove the lid and reach your hand inside the unit through the top 5" mouth. Remove the silver screen filter off of the bottom of the unit by gently pulling up on it.
- ➋ Pour a few inches of water into the bottom of the unit.
- ➌ Take a garden hose and cover the opening where the silver screen was. Turn on the hose while squeezing the trigger with the unit turned on.
- ➍ This will push the air out and the unit will function properly.
- ➎ Replace the silver screen.





www.nationalgardenwholesale.com

