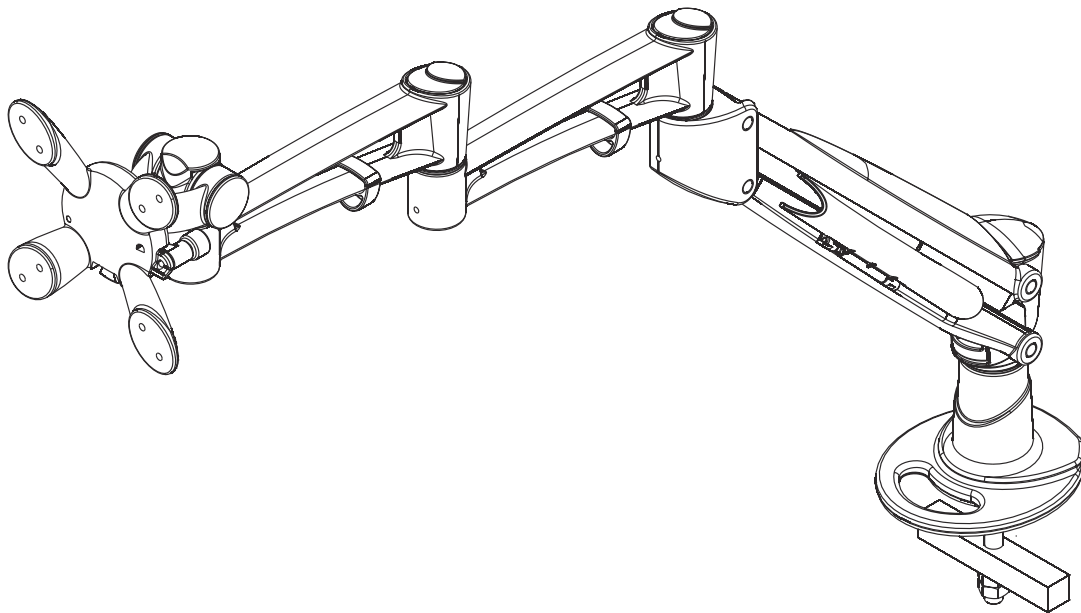
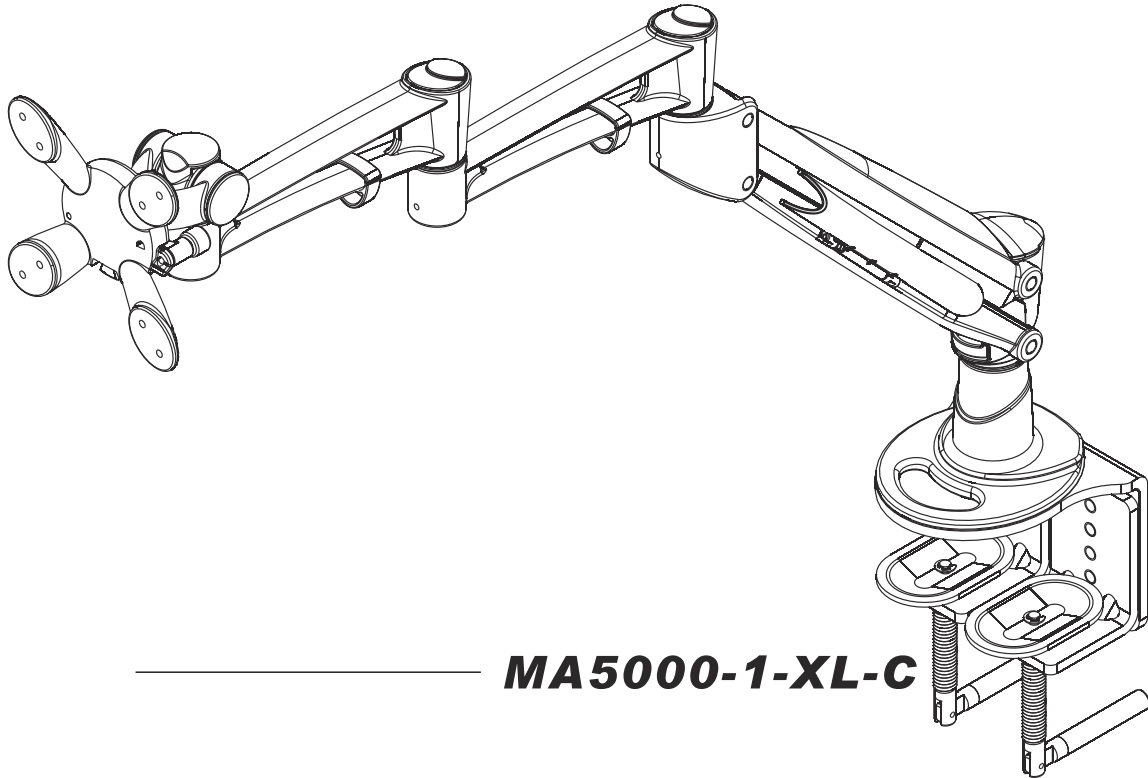


User Manual

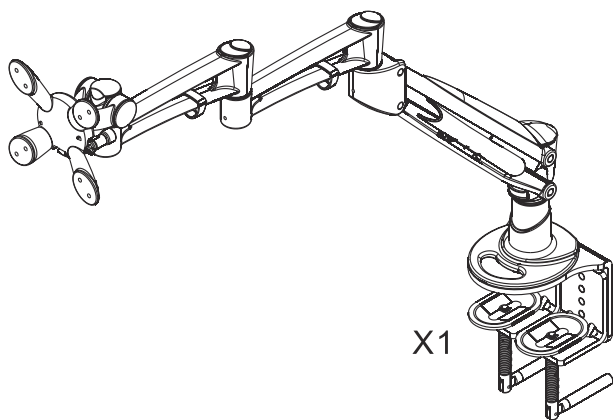
LCD Monitor Arm



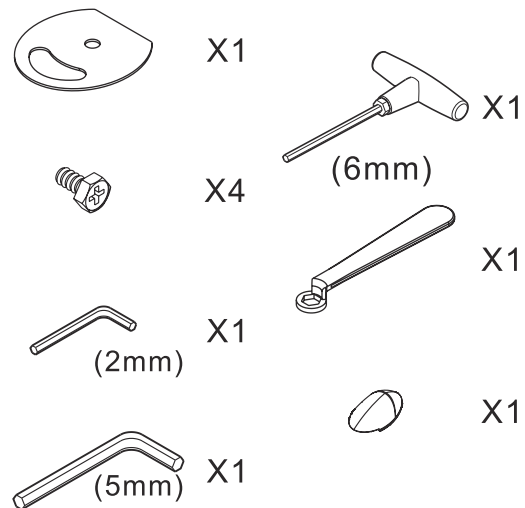
Before assembly please spend some time to read this and follow the procedures step by step. Do not discard any of the packaging until you have checked all the parts and the package of fittings. If you are missing any of the parts, please contact ISE Customer Service.

MA5000-1-XL-C

Part Check-List

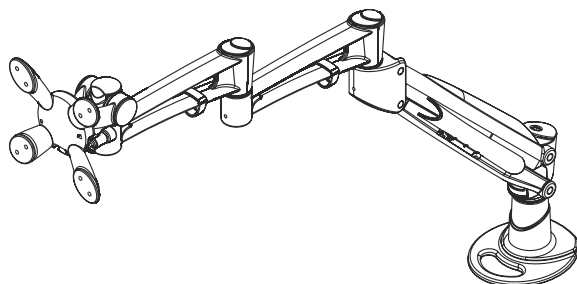


Fitting / Tools Check-List

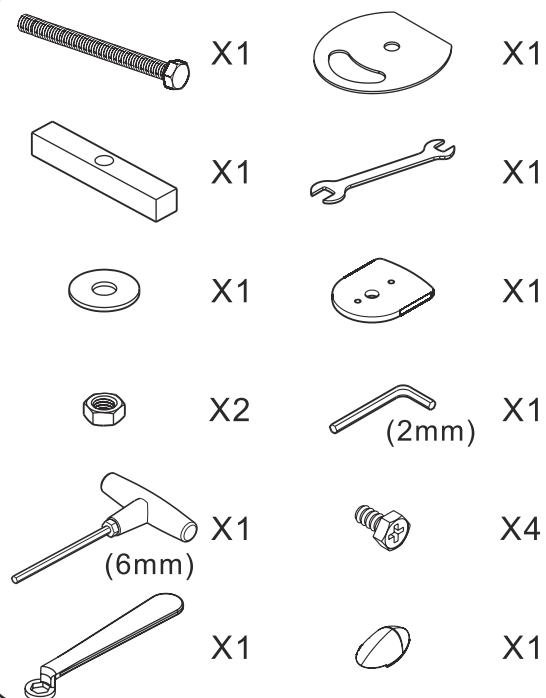


MA5000-1-XL-G

Part Check-List



Fitting / Tools Check-List

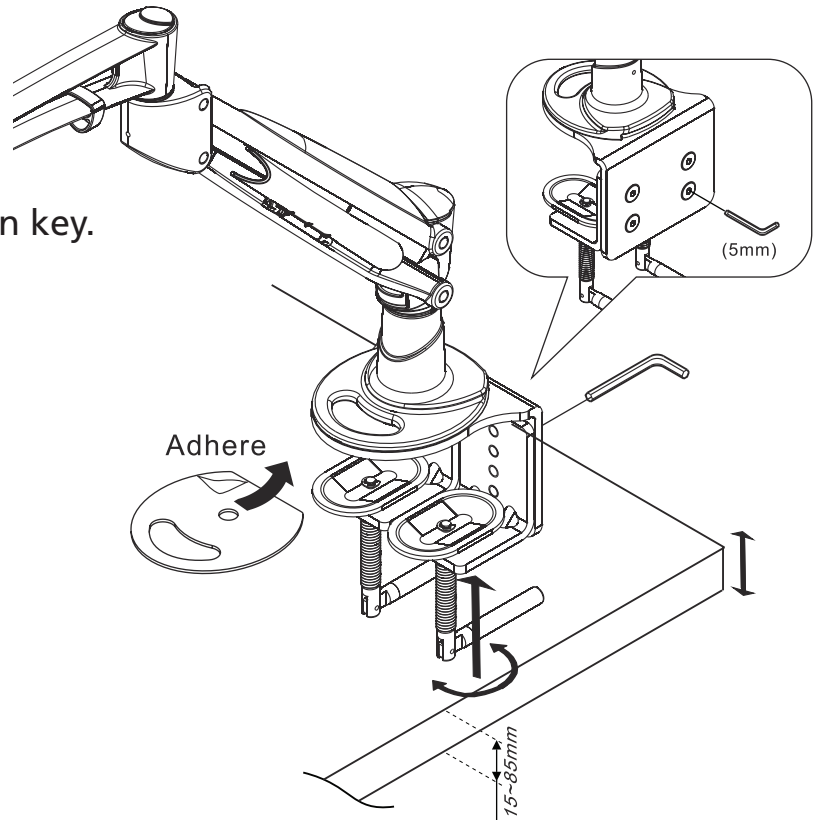


Step 1 >> MA5000-1-XL-C

"Clamp" assembly

Adhere the pad to the clamp base.
Desk thickness from 0.6"-3.3"
(15mm-85mm).

Use the screws provided to assemble the two-piece clamp.
Tighten using the supplied allen key.



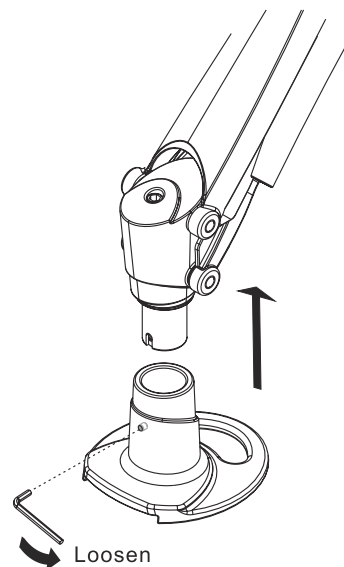
Step 2 >> MA5000-1-XL-G

"Grommet" assembly step (1-1)

Use the 2mm allen key to loosen the screw, and then lift the arm out.

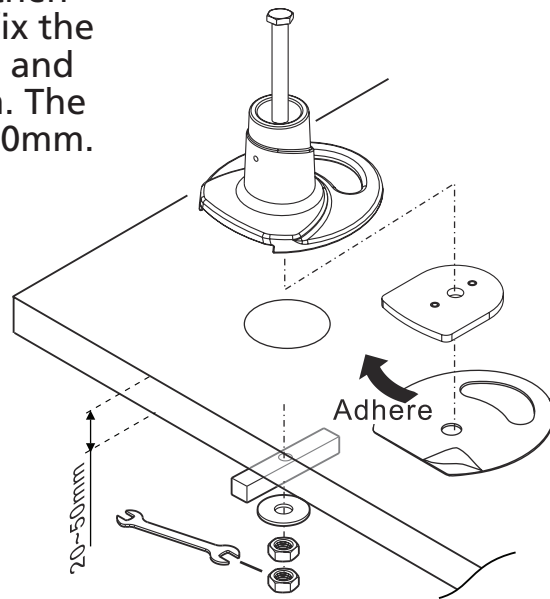
Notice:

Please do not drop the screw.



MA5000-1-XL-C

To assemble, place the small metal plate in the bottom concavity of the grommet and then adhere the pad to the grommet. Then fix the grommet set on the desk using the bolt and parts. Desk thickness from 20mm-50mm. The diameter of the hole is from 20mm to 50mm.

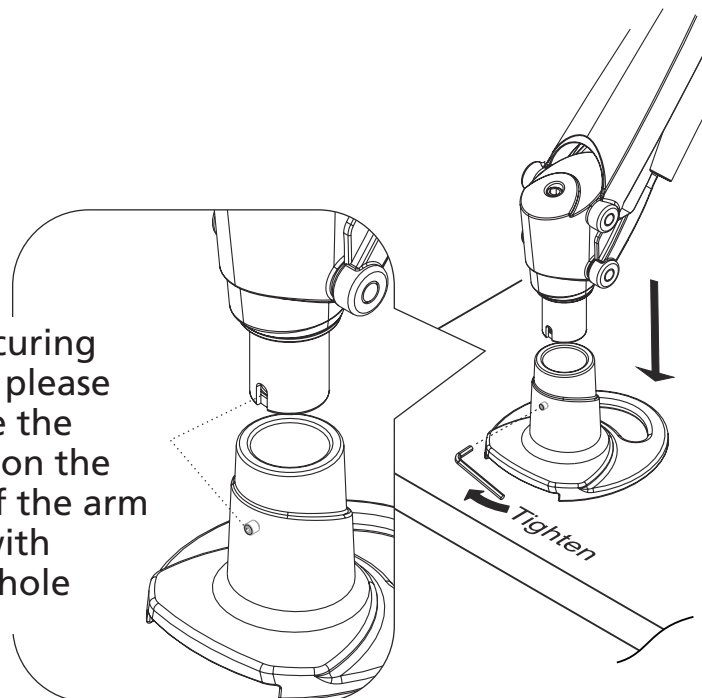


MA5000-1-XL-G

"Grommet" assembly step (1-3)

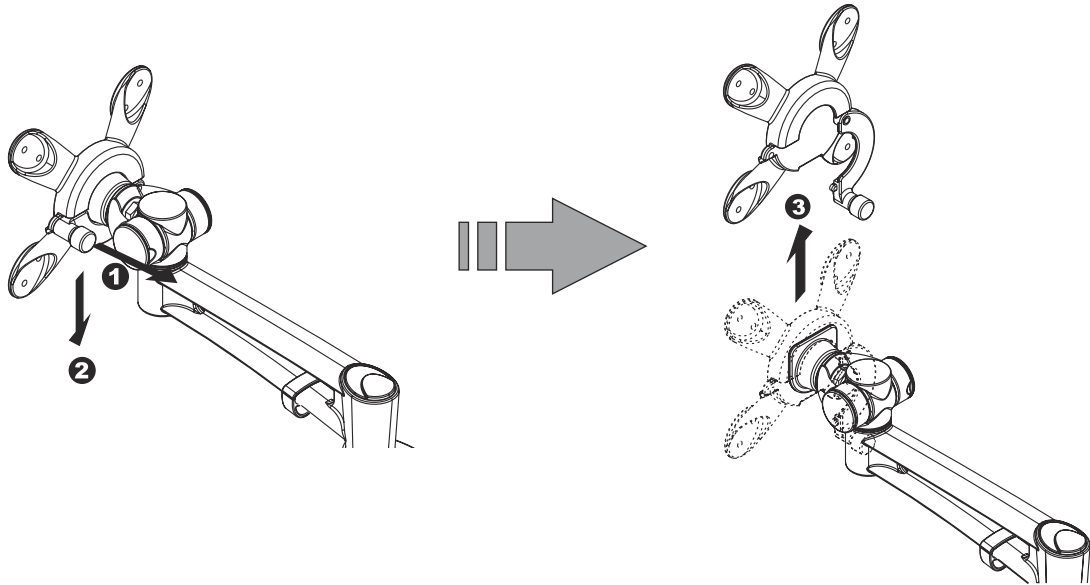
Fix the clamp or grommet mount on the desk. Use 2 mm allen key to secure the pole and the clamp or grommet mount together, by tightening the screw at the bottom, and then turning it back 1 rotation.

Note:
Before securing the screw please make sure the concavity on the bottom of the arm lines up with the small hole position.



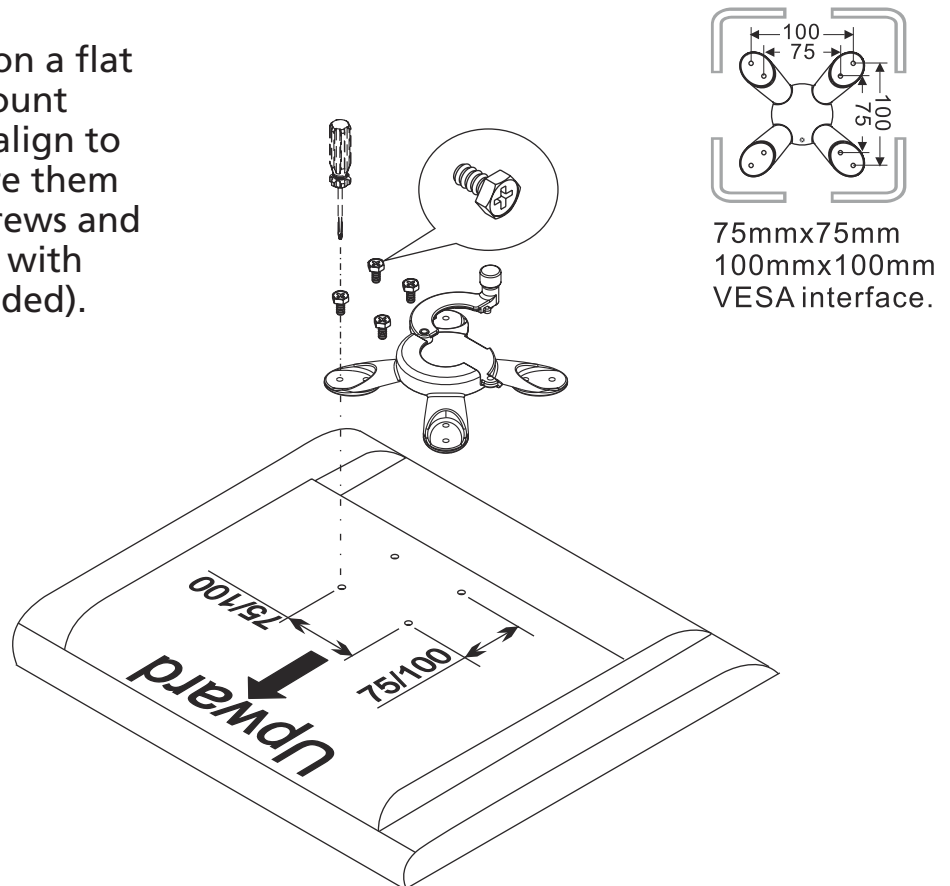
Step 2

Pull the locking knob out and then drop the lever down to open the Vesa mount, and then remove the Vesa mount from the arm.



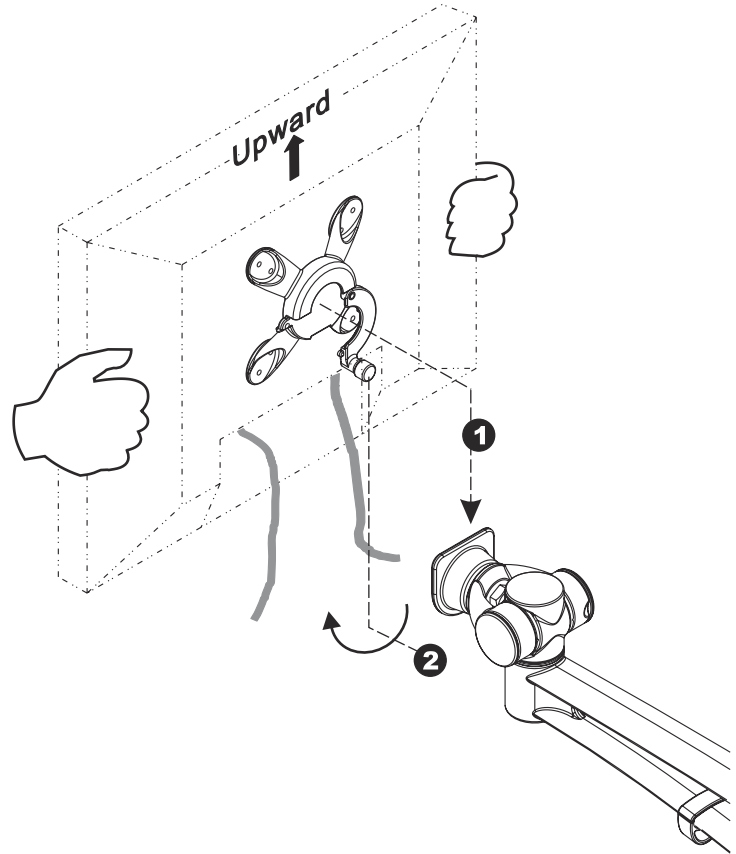
Step 3

Place LCD face down on a flat surface. Place Vesa mount on the LCD back and align to the screw holes. Secure them together with four screws and then tighten them up with screwdriver (not provided).



Step 4

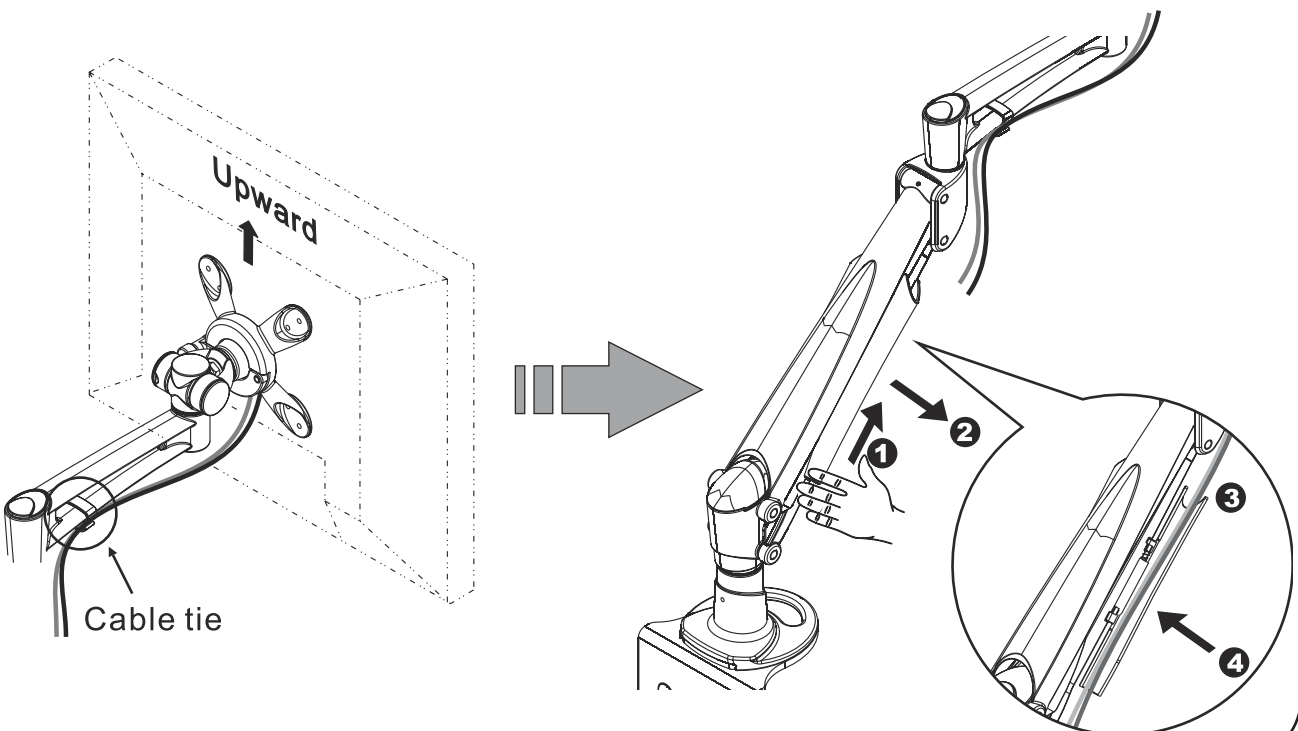
Insert the Vesa mount (with monitor already attached) onto the arm and press it down. Then lift and insert the locking knob.



Step 5

(1) Use cable clip supplied to finish cable management.

(2) Slide the clear plastic cable wing forward to open. Insert cables and lift to close.



Adjustment For Loading

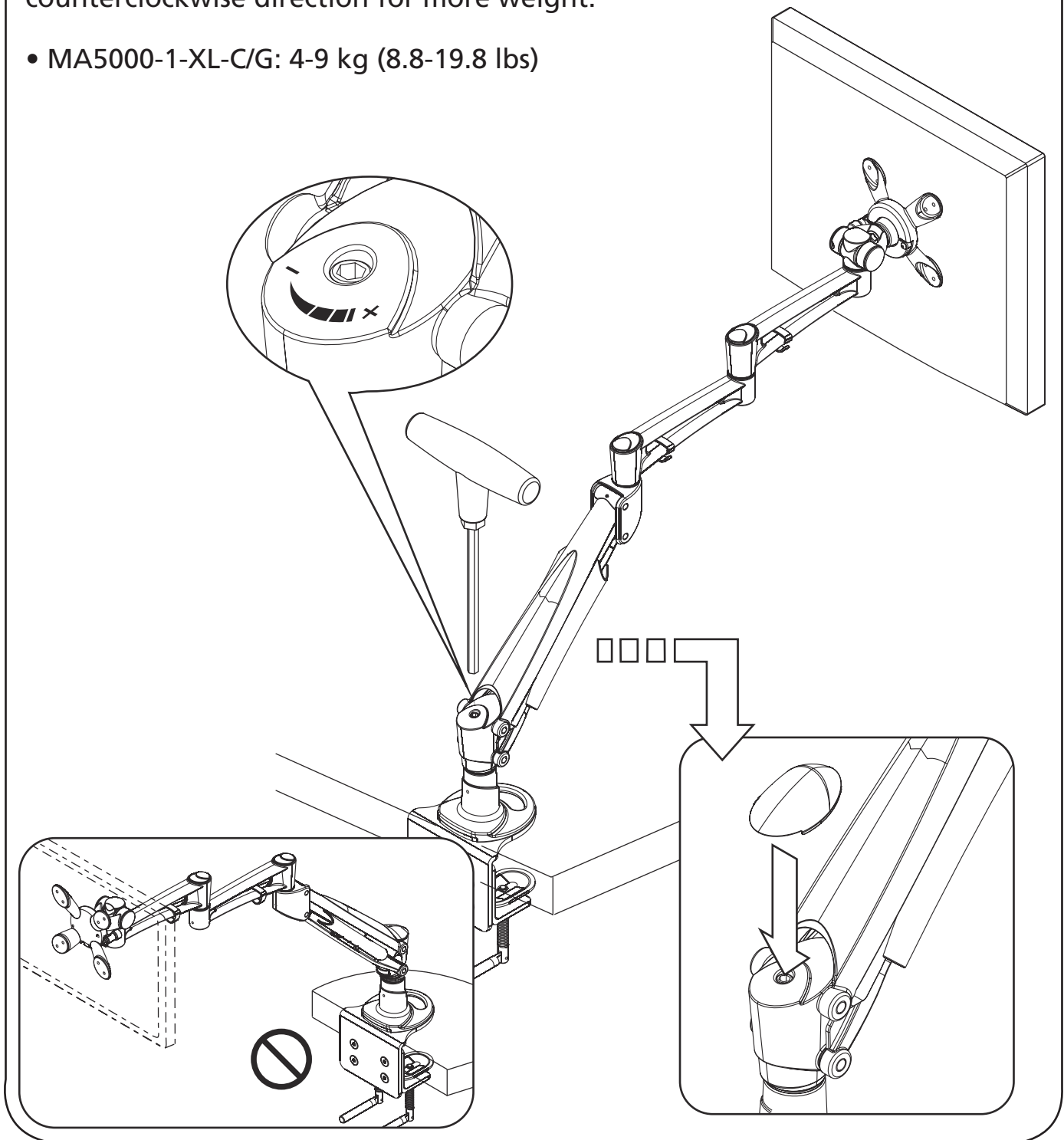
Caution for weight capacity adjustment:

1. Make sure of the LCD panel weight.
2. Support arm with a hand during assembly.

Adjustment:

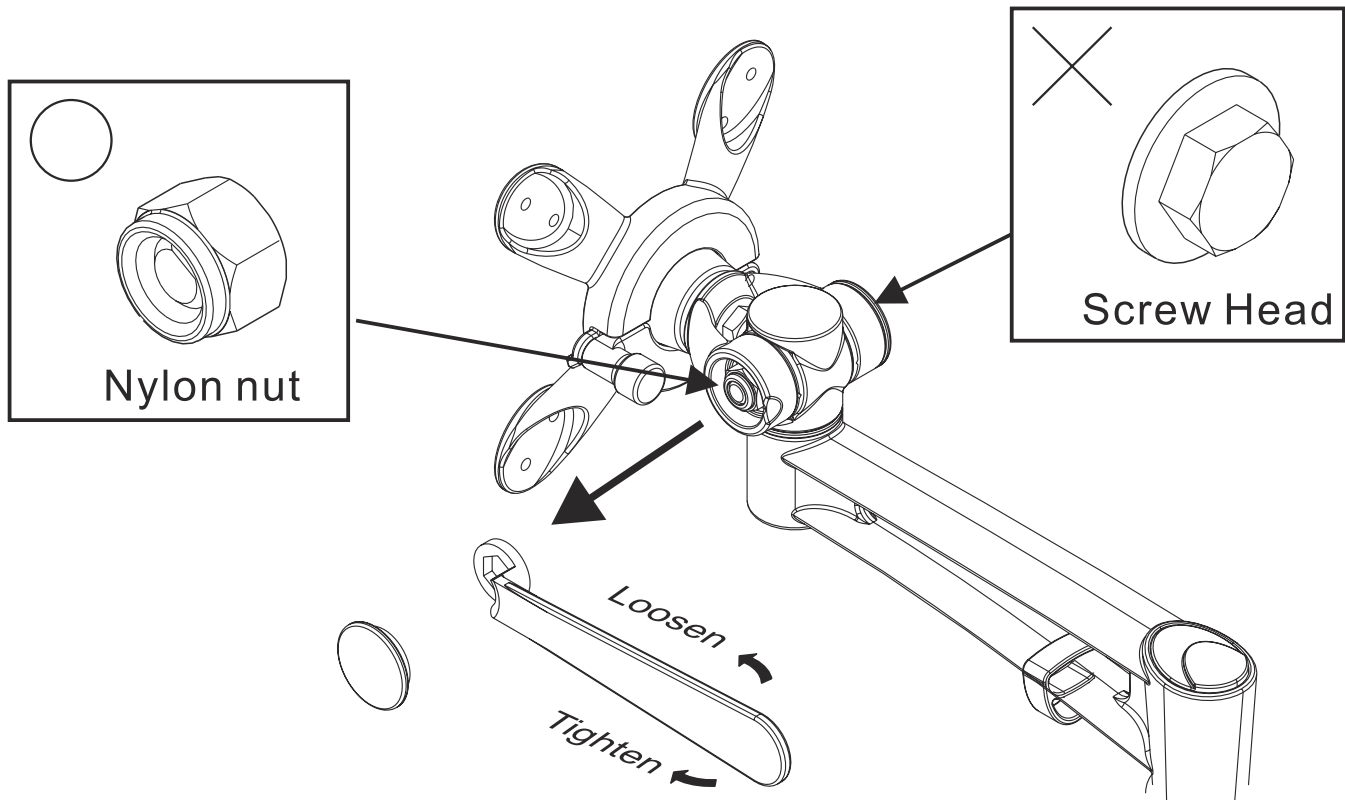
Use the Allen key provided to adjust the weight capacity. Twist the Allen key in a clockwise direction for less weight; counterclockwise direction for more weight.

- MA5000-1-XL-C/G: 4-9 kg (8.8-19.8 lbs)



Adjusting Universal Joint Tension

When assembling the arm with monitors of differing weights, you may find that the tension of the universal joint needs to be adjusted to ease movement or to maintain the desired monitor position. If so, adjust as follows:



- a.** Remove the plastic universal joint cover.
- b.** Find the nylon nut (not the screw head) and use the included wrench to adjust the tension.
- c.** Use one hand to support the monitor and adjust the tension of the universal joint.
 - Clockwise : more tension
 - Counterclockwise : less tension
- d.** When the desired tension is achieved, replace the plastic cover.

Caution:

- Support the monitor during the adjustment procedure.
- Only adjust the nylon nut (not the screw head).
- Do not disassemble the universal joint .