

SG Marker Kit



User Manual



1. Warnings, cautions and notices

User must comply with all warnings, cautions and notices indicated in this manual. Failure to comply with any of the warnings, cautions or notices can result in personal injuries and/or equipment damages. If you do not fully understand the information contained in this manual, please contact Stomatotech Inc. Refer to the back cover of this manual for contact information.

Drilling safety warning

WARNING: Always read and follow the operating and safety instructions in the power tool owner's manual and the instructions for use of the accessory. Always wear safety goggles to protect your eyes, and wear other appropriate safety items for protection. Do not use excessive force while drilling. Do not use a side-to-side movement when drilling. Adjust the drilling speed to the job; generally the harder the material being drilled the slower the RPMs.

2. What's in the box

	Quantity
1 SG™ Markers (Radiopaque Rods)	60
2 SG™ Plast 1.5Oz (43gr)	1
3 SG™ Partition Stickers (5 sets)	140
4 Drill bit ø2mm	1
5 Measuring spoon	1

3. Creating CT Scan Guide

3.1 Partition edentulous space with SG™ Partition Stickers

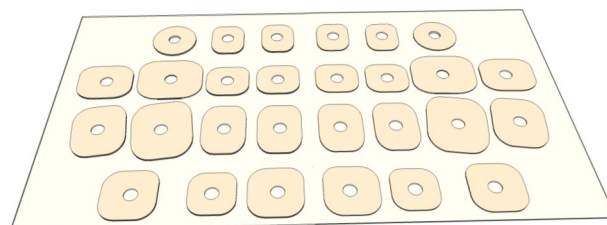


Fig. 5

SG™ Partition Stickers

1. Prepare a stone cast model.
2. Trace a line through the center of the residual ridge in a M-D direction.
3. Seal the area with a SG™ Sealer (use a “crazy glue” accelerator to dry).
4. For each planned osteotomy, apply SG™ Partition Stickers. Ensure that the hole of each sticker is on the traced line.

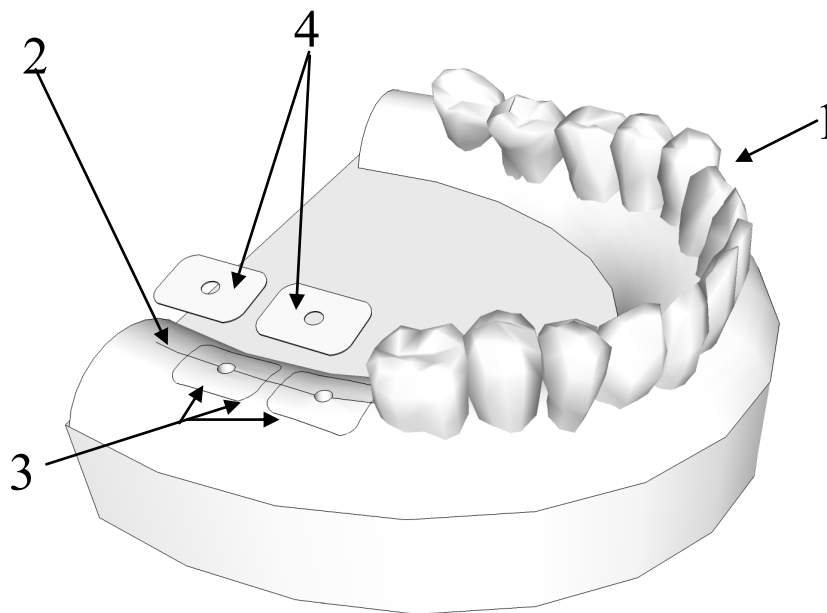
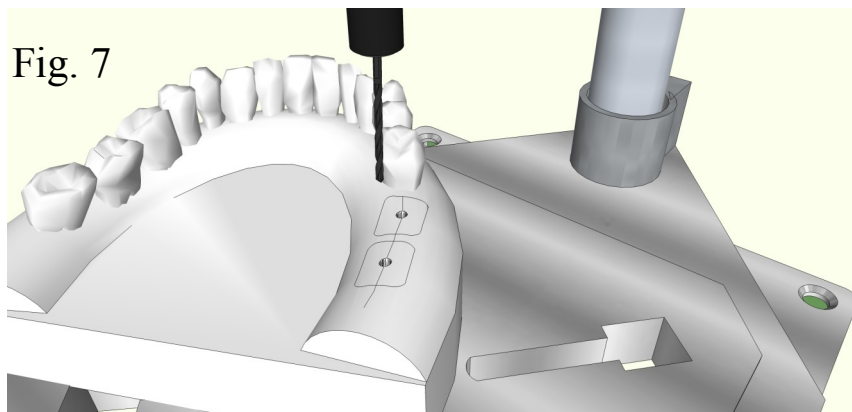


Fig. 6

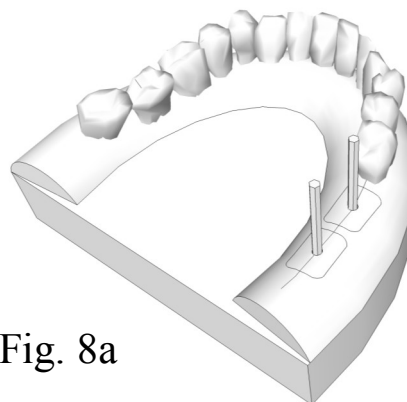
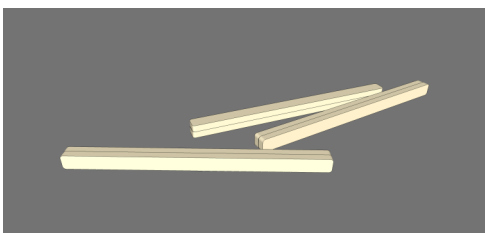
3.2 Drill the Stone Model

1. Drill a hole approximately 10mm deep through the center of each SG™ Partition Sticker, with a \varnothing 2mm drill bit (Fig. 7).



3.3 Insert SG™ Markers (Radiopaque Rods)

1. Insert a SG™ Marker (Fig.8) into each pre-drilled hole ((Fig.8a).
2. Trim the SG™ Markers 2-3mm above the level of an occlusal plane.



3.4 Form the base-plate (3 to 5 teeth)

1. Put in 1 measuring spoon of SG™ Plast pellets into a glass or a silicone vessel.
2. Add 100-150ml of hot water into the vessel and wait until the pellets become clear.
3. Using a spatula, gather the pellets into a lump.
4. Remove the SG™ Plast from the water and flatten it out with your fingers while it is still warm.
5. Form the SG™ Plast over the target area (including the ridge, the adjacent teeth and the radiopaque rod(s)) to form a baseplate (Fig.9).

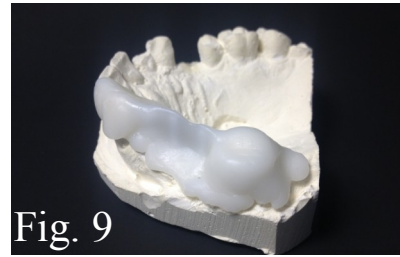


Fig. 9

6. Wait for 3 minutes for the baseplate to become completely opalescent.
7. Remove the baseplate from the model (Fig 10).
8. Trim the SG™ Radiopaque Marker(s) to the same height as the mucosa surface (Fig.10).

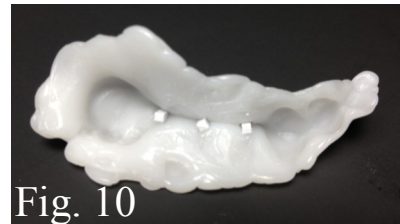


Fig. 10

9. Disinfect the baseplate for 5-12 minutes using a cold sterilization solution (Glutaraldehyde).
10. Take an X-Ray or CBCT with the baseplate (the CT Guide) in the patient's mouth to start planning the implant treatment (Fig.11).

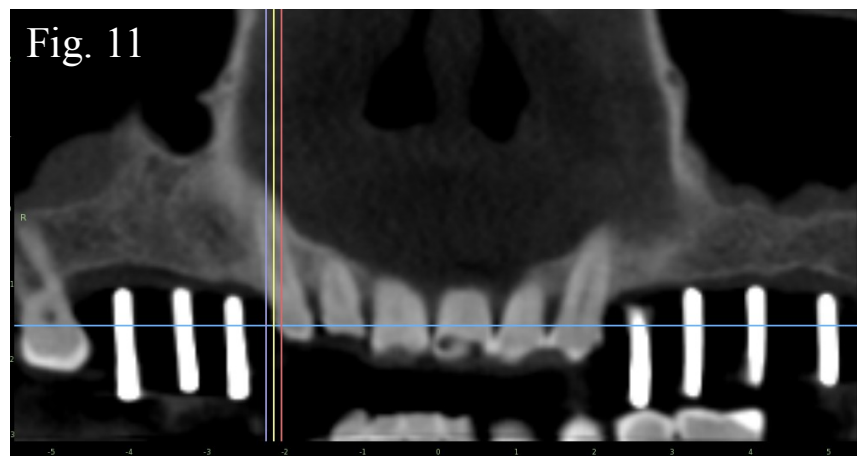


Fig. 11



Mail: Stomatotech Inc.
1 Holiday Ave.,
East Tower #501,
Pointe-Claire (Montreal)
Quebec H9R 5N3
Canada

Phone: 1-888-559-7795

Email: info@stomatotech.com

visit

www.stomatotech.com

or

Scan a QR Code

