

PARTS MANUAL



Pro-Series Logistics iForks

Manual Number 6866449



Publications

iForks	
PART NO.	DESCRIPTION
6823346	Service Manual
6165703	Operator's Pocket Guide
6182774	User Manual
673964	Literature Index Order Form

Servicing iForks Parts

IMPORTANT: DO NOT install the parts shown in this manual unless you have thoroughly reviewed the iForks Service Manual. Contact Cascade with any questions on replacement procedures.

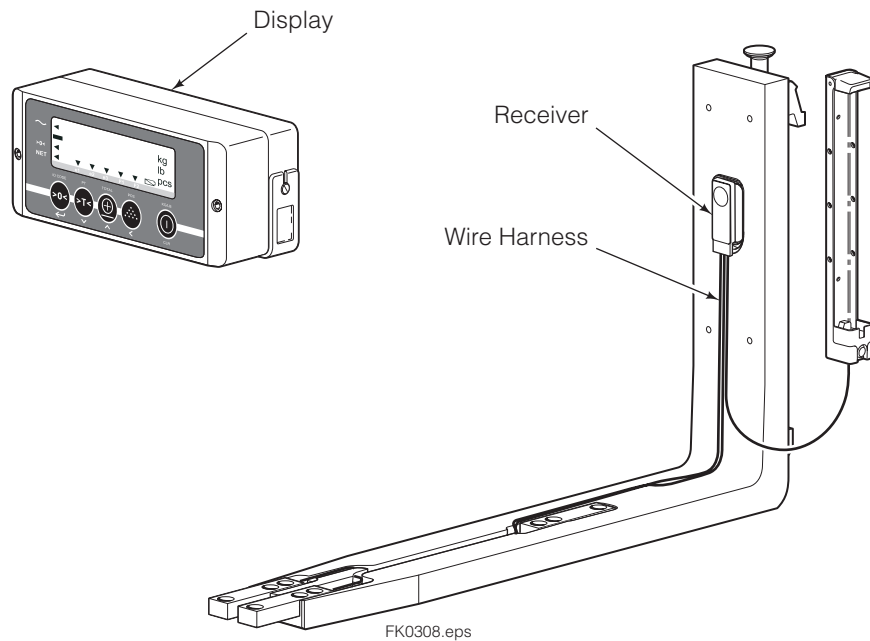
Before ordering iForks scale components, consider the following service procedures that need to be performed after installation:

If replacing the display or wire harness (includes load cells, Bluetooth® receiver and battery holder):

- 1 Pair each iFork Bluetooth® receiver with the display.
- 2 Perform a full calibration in the following order:
 - Zero Calibration
 - Corner Calibration
 - Weight Calibration

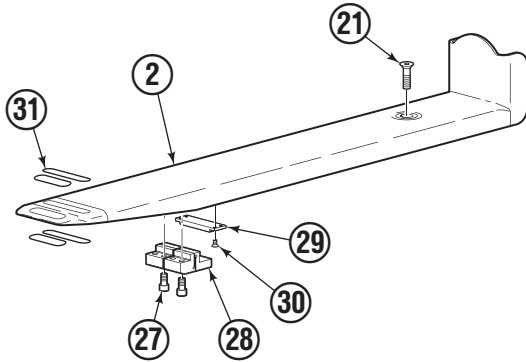
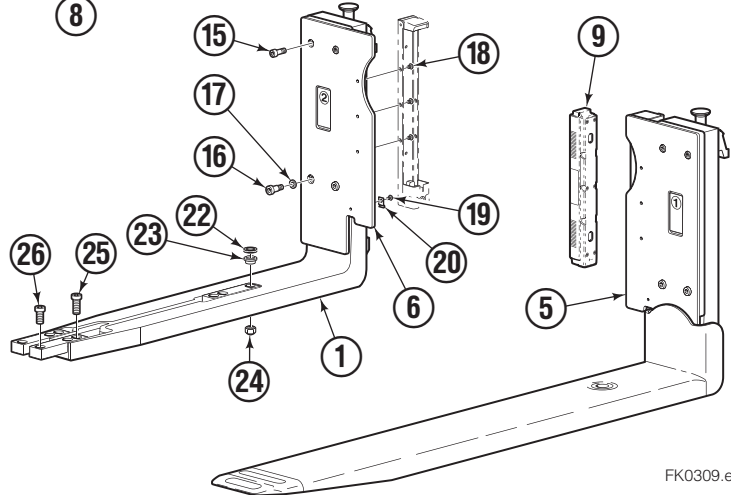
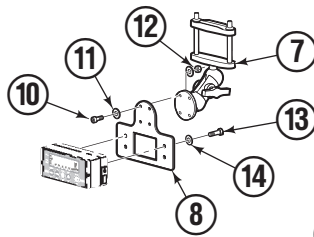
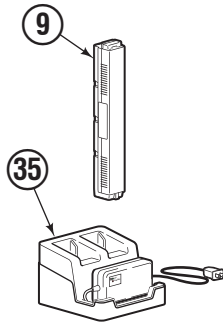
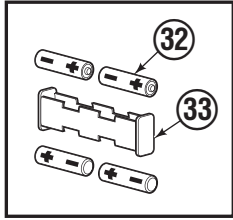
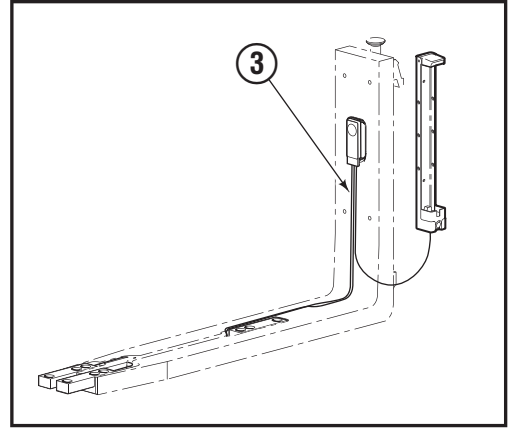
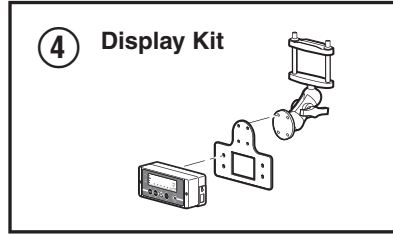
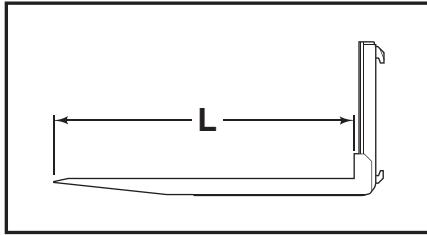
CAUTION: Cascade recommends using three known weights for the Weight Calibration procedure. Known weights should be 1/3 of fork capacity, 2/3 of fork capacity and full fork capacity. If your application has a narrow weight range, one known weight may be used for calibration. Contact Cascade if you are unsure what option is best for your application.

IMPORTANT: If the display is being replaced, obtain the mac address for each iFork. These codes are for establishing a connection with each iFork's Bluetooth® receiver. The code is located on each iFork's Bluetooth® receiver in the fork shank. Removal of cover plate is required.



iFork Parts

5000 lb (2500 kg), Class II,
Display – Battery Powered



FK0309.eps

REF	QTY	L=42 in. (762 mm)	L=48 in. (813 mm)	DESCRIPTION
		PART NO.	PART NO.	
		23B-WFG-2A-0115	23B-WFG-2A-0123	iFork Assembly, Pair
1	2	6172043	6172043	Fork Arm
2	2	6185444	6179205	Fork Cover
3	2	6172979	6172979	Wire Harness Kit, Without Level Sensor

iFork Parts

5000 lb (2500 kg), Class II, Display – Battery Powered

Common Parts

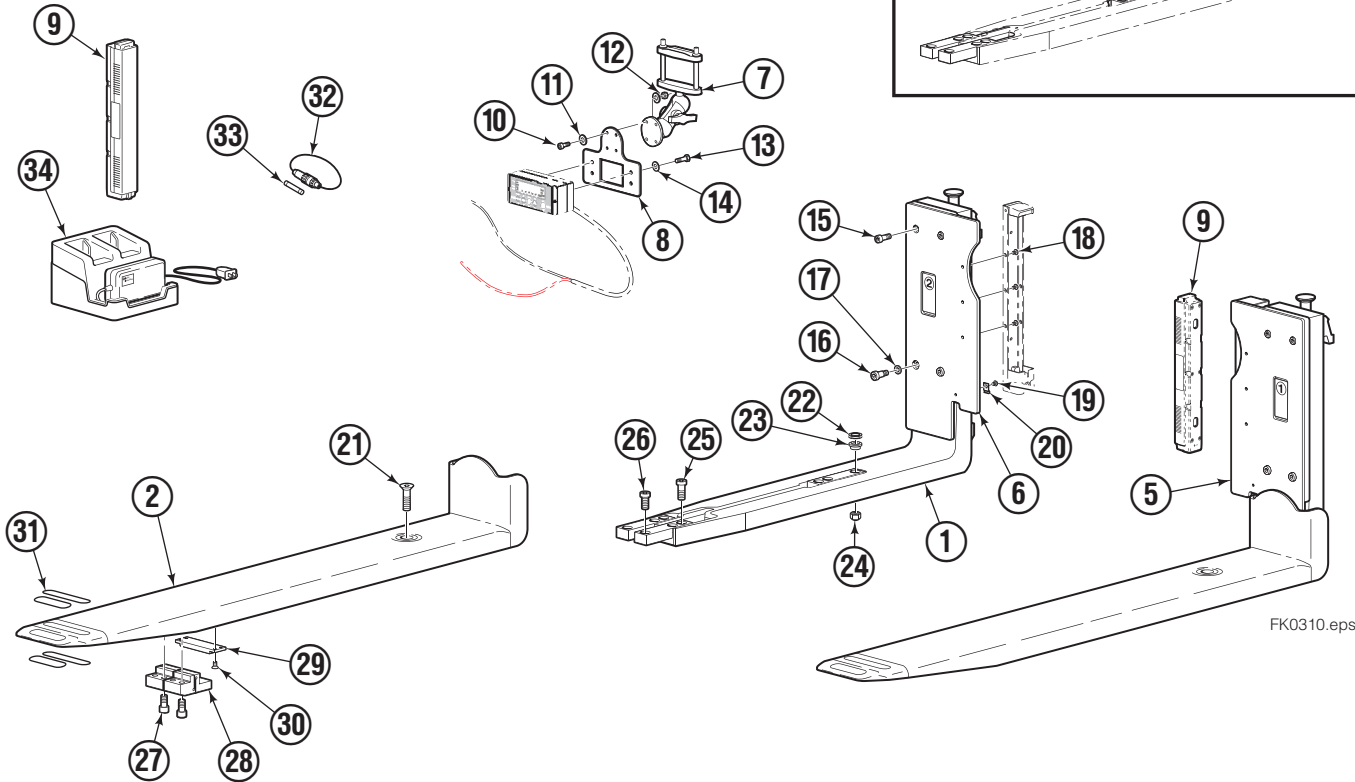
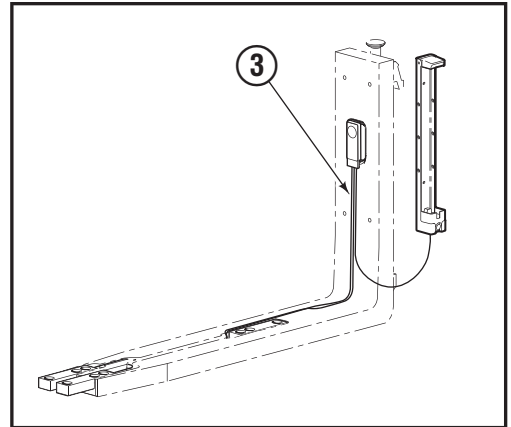
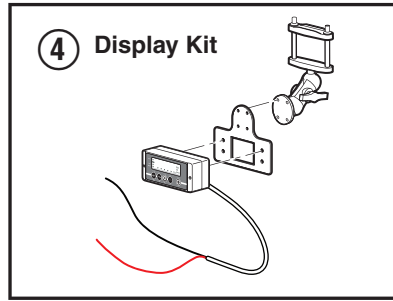
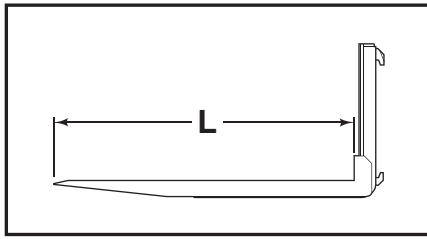
REF	QTY	PART NO.	DESCRIPTION
4	1	6182141	Display Kit with Battery Powered Display ◆ ■
5	1	6172727	Cover Plate, LH
6	1	6172726	Cover Plate, RH
7	1	6155861	Display Mount
8	1	6182041	Bracket
9	2	6182062	Rechargeable Battery
10	4	768781	Capscrew, M5 x 16
11	8	6156029	Washer, M5
12	4	212273	Nut, M5
13	2	767961	Capscrew, M8 x16
14	2	787384	Washer, M8
15	4	768208	Capscrew, M8 x 25
16	4	6182503	Capscrew, M8 x 16
17	4	6182524	Washer
18	6	6155833	Capscrew, M5 x 6
19	2	201726	Capscrew, M5 x 6
20	2	6169562	Clip
21	2	6405904	Capscrew, M12 x 45
22	4	6184992	Shim
23	2	6180679	Shear Collar
24	2	6159215	Nut, M12
25	12	6161059	Capscrew, M12 x 30
26	4	6182504	Capscrew, M12 x 25
27	8	789100	Capscrew, M10 x 25
28	4	6172196	Flex Joint
29	2	6182527	Bridge Plate
30	8	766496	Capscrew, M6 x 12
31	2	6185014	Tip Sticker Set
32	4	6182759	Battery, Rechargeable, AA
33	1	6182051	Display Battery Sleeve
34	1	6182760	Battery Charger, AA Batteries
35	1	6184186	Charging Stand, iFork Batteries

- ◆ Replacing components requires establishing Bluetooth® connection and calibration. Refer to "Servicing iForks Parts" section before ordering parts. Contact Cascade for further service inquiries.
- When replacing the display, record the mac addresses, located on the receiver in each fork shank. These codes are for establishing a connection with each iFork's Bluetooth® receiver.

Reference: Common Parts Group 6172978, Hardware Kits 6179467, SK-14457.

iFork Parts

5000 lb (2500 kg), Class II, Display – Truck Powered



FK0310.eps

REF	QTY	12V		24V-80V		DESCRIPTION
		L=42 in. (762 mm)	L=48 in. (813 mm)	L=42 in. (762 mm)	L=48 in. (813 mm)	
		PART NO.	PART NO.	PART NO.	PART NO.	
		23B-WFG-2A-1115	23B-WFG-2A-1123	23B-WFG-2A-2115	23B-WFG-2A-2123	iFork Assembly, Pair
1	2	6172043	6172043	6172043	6172043	Fork Arm
2	2	6185444	6179205	6185444	6179205	Fork Cover
3	2	6172979	6172979	6172979	6172979	Wire Harness Kit, Without Level Sensor
4	1	6182142	6182142	—	—	Display Kit with 12V Regulator ◆ ■
	1	—	—	6182143	6182143	Display with 24V-80V Converter ◆ ■

- ◆ Replacing components requires establishing Bluetooth® connection and calibration. Refer to "Servicing iForks Parts" section before ordering parts. Contact Cascade for further service inquiries.
- When replacing the display, record the mac addresses, located on the receiver in each fork shank. These codes are for establishing a connection with each iFork's Bluetooth® receiver.

iFork Parts

5000 lb (2500 kg), Class II, Display – Truck Power

Common Parts

REF	QTY	PART NO.	DESCRIPTION
5	1	6172727	Cover Plate, LH
6	1	6172726	Cover Plate, RH
7	1	6155861	Display Mount
8	1	6182041	Bracket
9	2	6182062	Rechargeable Battery
10	4	768781	Capscrew, M5 x 16
11	8	6156029	Washer, M5
12	4	212273	Nut, M5
13	2	767961	Capscrew, M8 x 16
14	2	787384	Washer, M8
15	4	768208	Capscrew, M8 x 25
16	4	6182503	Capscrew, M8 x 16
17	4	6182524	Washer
18	6	6155833	Capscrew, M6 x 8
19	2	201726	Capscrew, M5 x 6
20	2	6169562	Clip
21	2	6405904	Capscrew, M12 x 45
22	4	6184992	Shim
23	2	6180679	Shear Collar
24	2	6159215	Nut, M12
25	12	6161059	Capscrew, M12 x 30
26	4	6182504	Capscrew, M12 x 25
27	8	789100	Capscrew, M10 x 25
28	4	6172196	Flex Joint
29	2	6182527	Bridge Plate
30	8	766496	Capscrew, M6 x 12
31	4	6185014	Tip Sticker Set
32	1	6163599	Fuse Holder (includes item 33)
33	1	6167147	Fuse, 3.12A
34	1	6184186	Charging Stand, iFork Batteries

Reference: Common Parts Group 6172978, Hardware Kits 6179467, SK-14457.

iForks Display Options

The following options are available for upgrading or servicing iForks display.

Options

Power to the Display

- Battery powered (uses four AA batteries, rechargeable or non-rechargeable)
- 12V, wired to truck power
- 24V-80V, wired to truck power

Printers

- 6V Thermal Printer - works with battery power
- 12V Thermal Printer - requires truck power
- 12V Dot Matrix - requires truck power

Data Output

- RS232 - requires truck power
- Bluetooth® - requires truck power
- WLAN (Wifi) - requires truck power

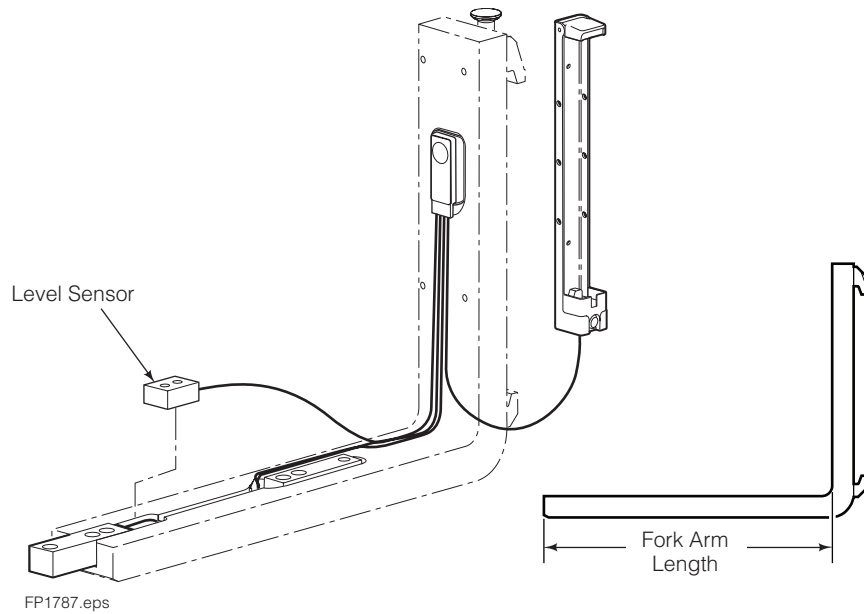
Cold Storage Applications

- Kits are available to warm the display internally.

Upgrading or Service Options Available

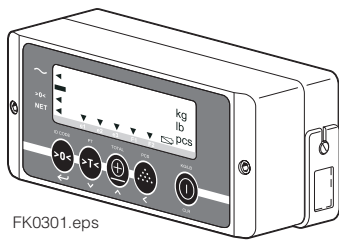
	iForks Calibration Required	Pairing Display to iForks Required
Send in the display to Cascade	No	No
Order new display	Yes	Yes

iForks Kits

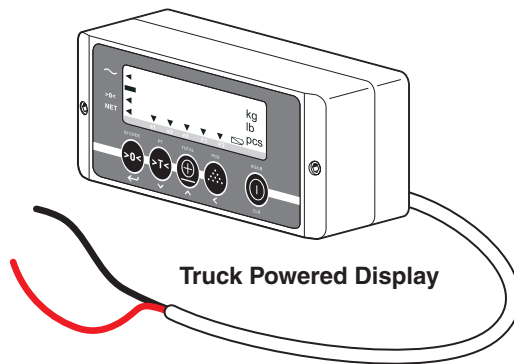


Wire Harness Kits

CAPACITY	FORK ARM LENGTH	WITHOUT LEVEL SENSOR	WITH LEVEL SENSOR
		PART NO.	PART NO.
5000 lb. (2268 kg)	30.4 in. (773 mm)	6172979	6185045



Battery Powered Display

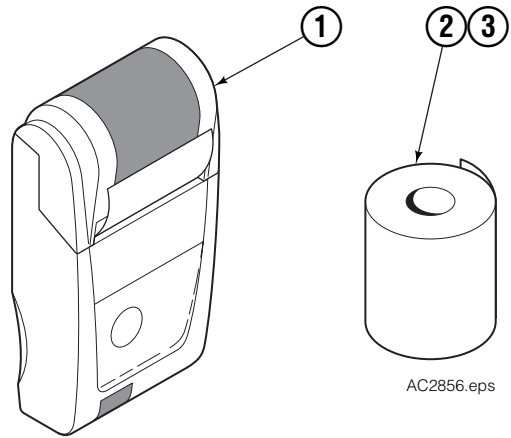
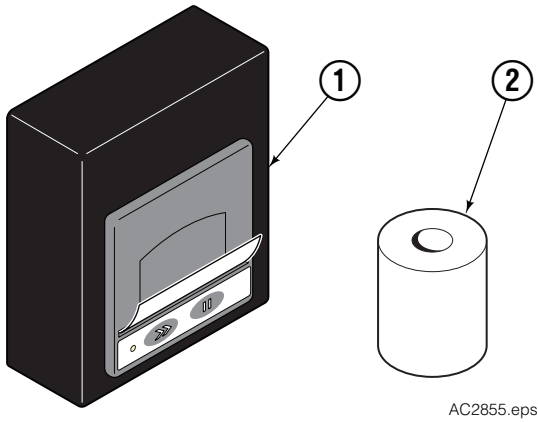


Truck Powered Display

Display Kits

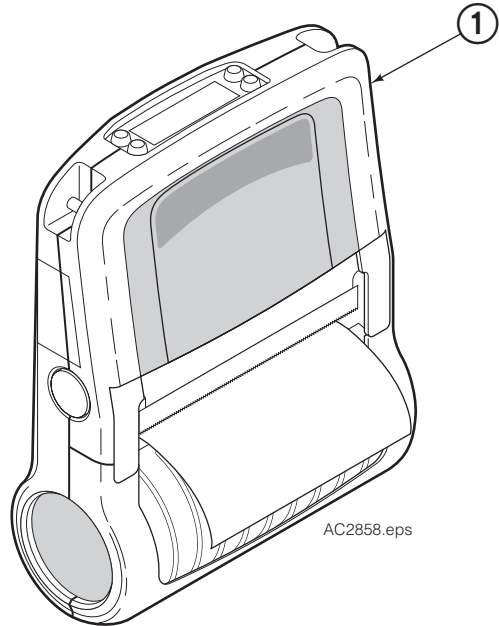
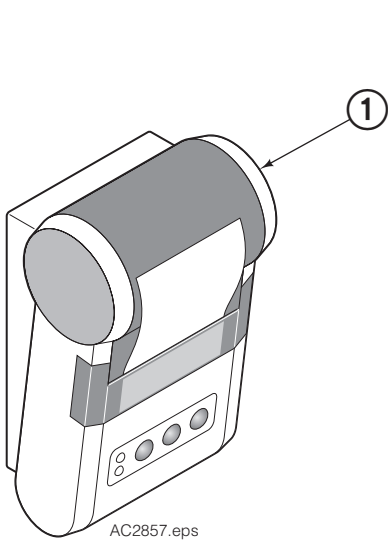
OPTIONS	BATTERY POWERED DISPLAY	TRUCK POWERED DISPLAY	
		12V	24-80V
Standard - No Options	6182141	6182142	6182143
6V Thermal Printer	6183675	—	—
12V Thermal Printer	—	6182145	6182146
12V Dot Matrix Printer	—	6182195	6182196
RS232 Data Output	—	6183676	6183677
Bluetooth Data Output	—	6182220	6182221

iForks Printers



Thermal Printer, 6V			
REF	QTY	PART NO.	DESCRIPTION
1	1	6165395	Thermal Printer, 6V
2	1	6161761	Printer Paper, 2 Roll Pack

Thermal Printer, 12V			
REF	QTY	PART NO.	DESCRIPTION
1	1	6161995	Thermal Printer, 12V
2	1	6161762	Printer Paper, 5 Roll Pack
3	1	6161763	Stick On Printer Paper, 2 Roll Pack



Dot Matrix Printer, 12V			
REF	QTY	PART NO.	DESCRIPTION
1	1	6169192	Dot Matrix Printer, 12V

Barcode Label Printer, 12V			
REF	QTY	PART NO.	DESCRIPTION
1	1	●	Barcode Label Printer, 12V

● Contact Cascade

Do you have questions you need answered right now?

Call your nearest Cascade Parts Department.
Visit us online at www.cascorp.com

AMERICAS

**Cascade Corporation
Parts Sales**
2501 Sheridan Ave.
Springfield, OH 45505
Tel: 888-CASCADE (227-2233)
Fax: 888-329-0234

Cascade Canada Inc.
5570 Timberlea Blvd.
Mississauga, Ontario
Canada L4W-4M6
Tel: 905-629-7777
Fax: 905-629-7785

Cascade do Brasil
Rua João Guerra, 134
Macuco, Santos - SP
Brasil 11015-130
Tel: 55-13-2105-8800
Fax: 55-13-2105-8899

EUROPE-AFRICA

**Cascade Italia S.R.L.
European Headquarters**
Via Dell'Artigianato 1
37050 Vago di Lavagno (VR)
Italy
Tel: 39-045-8989111
Fax: 39-045-8989160

Cascade (Africa) Pty. Ltd.
PO Box 625, Isando 1600
60A Steel Road
Sparton, Kempton Park
South Africa
Tel: 27-11-975-9240
Fax: 27-11-394-1147

ASIA-PACIFIC

Cascade Japan Ltd.
2-23, 2-Chome,
Kukuchi Nishimachi
Amagasaki, Hyogo
Japan, 661-0978
Tel: 81-6-6420-9771
Fax: 81-6-6420-9777

Cascade Korea
121B 9L Namdong Ind.
Complex, 691-8 Gojan-Dong
Namdong-Ku
Inchon, Korea
Tel: +82-32-821-2051
Fax: +82-32-821-2055

Cascade-Xiamen
No. 668 Yangguang Rd.
Xinyang Industrial Zone
Haicang, Xiamen City
Fujian Province
P.R. China 361026
Tel: 86-592-651-2500
Fax: 86-592-651-2571

**Cascade India Material
Handling Private Limited**
No 34, Global Trade Centre
1/1 Rambaugh Colony
Lal Bahadur Shastri Road,
Navi Peth, Pune 411 030
(Maharashtra) India
Phone: +91 020 2432 5490
Fax: +91 020 2433 0881

Cascade Australia Pty. Ltd.
1445 Ipswich Road
Rocklea, QLD 4107
Australia
Tel: 1-800-227-223
Fax: +61 7 3373-7333

Cascade New Zealand
15 Ra Ora Drive
East Tamaki, Auckland
New Zealand
Tel: +64-9-273-9136
Fax: +64-9-273-9137

**Sunstream Industries
Pte. Ltd.**
18 Tuas South Street 5
Singapore 637796
Tel: +65-6795-7555
Fax: +65-6863-1368

