

**SMARTDAC+ STANDARD
IP Address Configurator
User's Manual**

Introduction

This manual explains how to use SMARTDAC+ STANDARD IP Address Configurator. To ensure correct use, please read this manual thoroughly before beginning operation.

Notes

- The contents of this manual are subject to change without prior notice as a result of continuing improvements to the software's performance and functions.
- Every effort has been made in the preparation of this manual to ensure the accuracy of its contents. However, should you have any questions or find any errors, please contact your nearest YOKOGAWA dealer.
- Copying or reproducing all or any part of the contents of this manual without YOKOGAWA's permission is strictly prohibited.
- The TCP/IP software of this product and the document concerning the TCP/IP software have been developed/created by YOKOGAWA based on the BSD Networking Software, Release 1 that has been licensed from University of California.

Trademarks

- vigilantplant is a registered trademark of Yokogawa Electric Corporation.
- SMARTDAC+ is a registered trademark of Yokogawa Electric Corporation.
- Microsoft, Windows, and Internet Explorer are either registered trademarks or trademarks of Microsoft Corporation in the United States and/or other countries.
- Adobe and Acrobat are registered trademarks or trademarks of Adobe Systems Incorporated.
- Pentium is a trademark of Intel Corporation in the United States and/or other countries.
- Bluetooth is a registered trademark or trademark of Bluetooth SIG, Inc.
- Company and product names that appear in this manual are registered trademarks or trademarks of their respective holders.
- The company and product names used in this manual are not accompanied by the registered trademark or trademark symbols (® and ™).

Revisions

December, 2014	1st Edition
August, 2015	2nd Edition

Software License Agreement

IMPORTANT - PLEASE READ CAREFULLY BEFORE INSTALLING OR USING:

THANK YOU VERY MUCH FOR SELECTING SOFTWARE OF YOKOGAWA ELECTRIC CORPORATION ("YOKOGAWA") PROVIDED BY DOWNLOADING FROM YOKOGAWA'S WEB SITE, OR THE RECORDING MEDIUM (collectively, "Software Product"). BY INSTALLING OR OTHERWISE USING THE SOFTWARE PRODUCT, YOU AGREE TO BE BOUND BY THE TERMS AND CONDITIONS OF THIS AGREEMENT. IF YOU DO NOT AGREE, DO NOT INSTALL NOR USE THE SOFTWARE PRODUCT.

1. Scope

This Agreement applies to the Software Product and associated documentation of Yokogawa. Unless otherwise provided by Yokogawa, this Agreement applies to the updates and upgrades of the Software Product which may be provided by Yokogawa.

Software product: SMARTDAC+ STANDARD IP Address Configurator

2. Grant of License

- 2.1 Subject to the terms and conditions of this Agreement, Yokogawa hereby grants to you a non-exclusive and non-transferable right to use the Software Product for your internal operation use,
- 2.2 Unless otherwise agreed or provided by Yokogawa in writing, the following acts are prohibited:
 - a) to reproduce the Software Product, except for one archival copy for backup purpose, which shall be maintained with due care subject to this Agreement;
 - b) to sell, lease, distribute, transfer, pledge, sublicense, make available via the network or otherwise convey the Software Product or the license granted herein to any other person or entity;
 - c) to use the Software Product on any unauthorized computer via the network;
 - d) to cause, permit or attempt to dump, disassemble, decompile, reverse-engineer, or otherwise translate or reproduce the Software Product into source code or other human readable format, or to revise or translate the Software Product into other language and change it to other formats than that in which Yokogawa provided;
 - e) to cause, permit or attempt to remove any copy protection used or provided in the Software Product; or
 - f) to remove any copyright notice, trademark notice, logo or other proprietary notices or identification shown in the Software Product.
- 2.3 Any and all technology, algorithms, know-how and process contained in the Software Product are the property or trade secret of Yokogawa or licensors to Yokogawa. Ownership of and all the rights in the Software Product shall be retained by Yokogawa or the licensors and none of the rights will be transferred to you hereunder.
- 2.4 You agree to maintain the aforementioned property and trade secret of Yokogawa or licensors and key codes in strict confidence, not to disclose it to any party other than your employees, officers, directors or similar staff who have a legitimate need to know to use the Software Product and agreed in writing to abide by the obligations hereunder.
- 2.5 Upon expiration or termination of this Agreement, the Software Product and its copies, including extracts, shall be returned to Yokogawa and any copies retained in your computer or media shall be deleted irretrievably. If you dispose of media in which the Software Product or its copy is stored, the contents shall be irretrievably deleted.
- 2.6 The Software Product may contain software which Yokogawa is granted a right to sublicense or distribute by third party suppliers, including affiliates of Yokogawa ("Third Party Software"). If suppliers of the Third Party Software ("Supplier") provide special terms and conditions for the Third Party Software which differ from this Agreement, the special terms and conditions separately provided by Yokogawa shall prevail over this Agreement. Some software may be licensed to you directly by Supplier.
- 2.7 The Software Product may contain open source software ("OSS"), for which the special terms and conditions separately provided by Yokogawa shall take precedence over this Agreement.

3. Restrictions on Application

- 3.1 Unless otherwise agreed in writing between you and Yokogawa, the Software Product is not intended, designed, produced or licensed for use in relation to aircraft operation or control, ship navigation or marine equipment control, or ground facility or device for support of the aforesaid operation or control, or for use in relation to rail facility, nuclear related facility, radiation-related equipment, or medical equipment or facility, or under any other circumstances which may require high safety standards.
- 3.2 If the Software Product is used for the abovementioned purposes, neither Yokogawa nor assumes liability for any claim or damage arising from the said use and you shall indemnify and hold Yokogawa, Supplier, their affiliates, subcontractors, officers, directors, employees and agents harmless from any liability or damage whatsoever, including any court costs and attorney's fees, arising out of or related to the said use.

4. Limited Warranty

- 4.1 The Software Product shall be provided to you on an "as is" basis at the time of delivery, Yokogawa shall disclaim all of the warranties whatsoever, express or implied, and all liabilities therefrom. If any physical defect is found on the recording medium not later than twelve (12) months from delivery, Yokogawa shall replace such defective medium free of charge, provided that the defective medium shall be returned to the service office designated by Yokogawa at your expense within the said twelve (12) months. THIS LIMITED WARRANTY PROVIDED IN THIS CLAUSE IS IN LIEU OF ALL OTHER WARRANTIES OF ANY KIND WHATSOEVER AND YOKOGAWA HEREBY DISCLAIMS ALL OTHER WARRANTIES RELATING TO THE SOFTWARE PRODUCT, WHETHER EXPRESSED OR IMPLIED, INCLUDING WITHOUT LIMITATION, ANY IMPLIED WARRANTIES OF MERCHANTABILITY, FITNESS FOR ANY PARTICULAR PURPOSE, NON-INFRINGEMENT, QUALITY, FUNCTIONALITY, APPROPRIATENESS, ACCURACY, RELIABILITY AND RECENCY. IN NO EVENT SHALL YOKOGAWA WARRANT THAT THERE IS NO INCONSISTENCY OR INTERFERENCE BETWEEN THE SOFTWARE PRODUCT AND OTHER SOFTWARE NOR SHALL BE LIABLE THEREFOR. The warranty provisions of the applicable law are expressly excluded to the extent permitted.
- 4.2 At the sole discretion of Yokogawa, Yokogawa may upgrade the Software Product to the new version number ("Upgrade") and make it available to you at your expense or free of charge as Yokogawa deems fit. In no event shall Yokogawa be obliged to upgrade the Software Product or make the Upgrade available to you.
- 4.3 Certain maintenance service may be available for some types of Software Product at Yokogawa's current list price. Scope and terms and conditions of the maintenance service shall be subject to those separately provided by Yokogawa. Unless otherwise provided in Yokogawa catalogues or General Specifications, maintenance services will be available only for the latest version and the immediately preceding version. In no event will service for the immediately preceding version be available for more than 5 years after the latest version has been released. In addition, no service will be provided by Yokogawa for the Software Product which has been discontinued for more than 5 years. Notwithstanding the foregoing, maintenance service may not be available for non-standard Software Product. Further, in no event shall Yokogawa provide any service for the Software Product which has been modified or changed by any person other than Yokogawa.

5. Infringement

- 5.1 If you are warned or receive a claim by a third party that the Software Product in its original form infringes any third party's patent (which is issued at the time of delivery of the Software Product), trade mark, copyright or other intellectual property rights ("Claim"), you shall promptly notify Yokogawa thereof in writing.
- 5.2 If the infringement is attributable to Yokogawa, Yokogawa will defend you from the Claim at Yokogawa's expense and indemnify you from the damages finally granted by the court or otherwise agreed by Yokogawa out of court. The foregoing obligation and indemnity of Yokogawa shall be subject to that i) you promptly notify Yokogawa of the Claim in writing as provided above, ii) you grant to Yokogawa and its designees the full authority to control the defense and settlement of such Claim and iii) you give every and all necessary information and assistance to Yokogawa upon Yokogawa's request.
- 5.3 If Yokogawa believes that a Claim may be made or threatened, Yokogawa may, at its option and its expense, either a) procure for you the right to continue using the Software Product, b) replace the Software Product with other software product to prevent infringement, c) modify the Software Product, in whole or in part, so that it become non-infringing, or d) if Yokogawa believes that a) through c) are not practicable, terminate this Agreement and refund you the paid-up amount of the book value of the Software Product as depreciated.
- 5.4 Notwithstanding the foregoing, Yokogawa shall have no obligation nor liability for, and you shall defend and indemnify Yokogawa and its suppliers from, the Claim, if the infringement is arising from a) modification of the Software Product made by a person other than Yokogawa, b) combination of the Software Product with hardware or software not furnished by Yokogawa, c) design or instruction provided by or on behalf of you, d) not complying with Yokogawa's suggestion, or e) any other causes not attributable to Yokogawa.
- 5.5 This section states the entire liability of Yokogawa and its suppliers and the sole remedy of you with respect to any claim of infringement of a third party's intellectual property rights. Notwithstanding anything to the contrary stated herein, with respect to the claims arising from or related to the Third Party Software or OSS, the special terms and conditions separately provided for such Third Party Software or OSS shall prevail.

6. Limitation of Liability

- 6.1 EXCEPT TO THE EXTENT THAT LIABILITY MAY NOT LAWFULLY BE EXCLUDED IN CONTRACT, YOKOGAWA SHALL NOT BE LIABLE TO ANY PERSON OR LEGAL ENTITY FOR LOSS OR DAMAGE, WHETHER DIRECT, INDIRECT, SPECIAL, INCIDENTAL, CONSEQUENTIAL OR EXEMPLARY DAMAGES, OR OTHER SIMILAR DAMAGES OF ANY KIND, INCLUDING WITHOUT LIMITATION, DAMAGES FOR LOSS OF BUSINESS PROFITS, BUSINESS INTERRUPTION, LOSS OR DESTRUCTION OF DATA, LOSS OF AVAILABILITY AND THE LIKE, ARISING OUT OF THE USE OR INABILITY TO USE OF THE SOFTWARE PRODUCT, OR ARISING OUT OF ITS GENERATED APPLICATIONS OR DATA, EVEN IF ADVISED OF THE POSSIBILITY OF SUCH DAMAGES, WHETHER BASED IN WARRANTY (EXPRESS OR IMPLIED), CONTRACT, STRICT LIABILITY, TORT (INCLUDING NEGLIGENCE), OR ANY OTHER LEGAL OR EQUITABLE GROUNDS. . If the Software Product delivered by Yokogawa is altered, modified or combined with other software or is otherwise made different from Yokogawa catalogues, General Specifications, basic specifications, functional specifications or manuals without Yokogawa's prior written consent, Yokogawa shall be exempted from its obligations and liabilities under this Agreement or law.
- 6.2 Any claim against Yokogawa based on any cause of action under or in relation to this Agreement must be given in writing to Yokogawa within three (3) months after the cause of action accrues.

7. Export Control

You agree not to export or provide to any other countries, whether directly or indirectly, the Software Product, in whole or in part, without prior written consent of Yokogawa. If Yokogawa agrees such exportation or provision, you shall comply with the export control and related laws, regulations and orders of Japan, the United States of America, and any other applicable countries and obtain export/import permit and take all necessary procedures under your own responsibility and at your own expense.

8. Audit; Withholding

- 8.1 Yokogawa shall have the right to access and audit your facilities and any of your records, including data stored on computers, in relation to the use of the Software Product as may be reasonably necessary in Yokogawa's opinion to verify that the requirements of this Agreement are being met.
- 8.2 Even after license being granted under this Agreement, should there be any change in circumstances or environment of use which was not foreseen at the time of delivery and, in Yokogawa's reasonable opinion, is not appropriate for using the Software Product, or if Yokogawa otherwise reasonably believes it is too inappropriate for you to continue using the Software Product, Yokogawa may suspend or withhold the license provided hereunder.

9. Assignment

If you transfer or assign the Software Product to a third party with Yokogawa's prior written consent, you shall expressly present this Agreement to the assignee to ensure that the assignee comply with this Agreement, transfer all copies and whole part of the Software Product to the assignee and shall delete any and all copy of the Software Product in your possession irretrievably. This Agreement shall inure to the benefit of and shall be binding on the assignees and successors of the parties.

10. Termination

Yokogawa shall have the right to terminate this Agreement with immediate effect upon notice to you, if you breach any of the terms and conditions hereof. Upon termination of this Agreement, you shall promptly cease using the Software Product and, in accordance with sub-clause 2.5, return or irretrievably delete all copies of the Software Product, certifying the same in writing. Clauses 2.4 and 2.5, 3, 5, 6 and 11 shall survive any termination of this Agreement.

11. Governing Law; Disputes

This Agreement shall be governed by and construed in accordance with the laws of Japan.

Any dispute, controversies, or differences which may arise between the parties hereto, out of, in relation to or in connection with this Agreement ("Dispute") shall be resolved amicably through negotiation between the parties based on mutual trust. Should the parties fail to settle the Dispute within ninety (90) days after the notice is given from either party to the other, the Dispute shall be addressed in the following manner:

(i) If you are a Japanese individual or entity, the Dispute shall be brought exclusively in the Tokyo District Court (The Main Court) in Japan.

(ii) If you are not a Japanese individual or entity, the Dispute shall be finally settled by arbitration in Tokyo, Japan in accordance with the Commercial Arbitration Rules of the Japan Commercial Arbitration Association. All proceedings in arbitration shall be conducted in the English language, unless otherwise agreed. The award of arbitration shall be final and binding upon both parties, however, each party may make an application to any court having jurisdiction for judgment to be entered on the award and/or for enforcement of the award.

12. Miscellaneous

- 12.1 This Agreement supersedes all prior oral and written understandings, representations and discussions between the parties concerning the subject matter hereof to the extent such understandings, representations and discussions should be discrepant or inconsistent with this Agreement.
- 12.2 If any part of this Agreement is found void or unenforceable, it shall not affect the validity of the balance of the Agreement, which shall remain valid and enforceable according to its terms and conditions. The parties hereby agree to attempt to substitute for such invalid or unenforceable provision a valid or enforceable provision that achieves to the greatest extent possible the economic, legal and commercial objectives of the invalid or unenforceable provision.
- 12.3 Failure by either party to insist on performance of this Agreement or to exercise a right when entitled does not prevent such party from doing so at a later time, either in relation to that default or any subsequent one.

End of document

How to Use This Manual

Structure of the Manual

This manual contains the following four chapters.


Chapter	Title and Description
1	Before Using the Product Provides an overview of the IP Address Configurator and the PC system requirements for using the software and describes how to install, start, and close the software.
2	Setting the IP Address Describes the parts of the window and how to use them and how to change the IP address.
--	Appendix Describes how to set and clear a firewall, using Windows 7 as an example.

Scope of This Manual

This manual does not explain the basic operations of your PC's operating system. For this information, read the Windows user's guide or related materials.

Conventions Used in This Manual

Unit	
K	Denotes 1024. Example: 768K (file size)
k	Denotes 1000.

Notes	
	<i>Improper handling or use can lead to injury to the user or damage to the instrument.</i> This symbol appears on the instrument to indicate that the user must refer to the user's manual for special instructions. The same symbol appears in the corresponding place in the user's manual to identify those instructions. In the manual, the symbol is used in conjunction with the word "WARNING" or "CAUTION."
WARNING	Calls attention to actions or conditions that could cause serious or fatal injury to the user, and precautions that can be taken to prevent such occurrences.
CAUTION	Calls attention to actions or conditions that could cause light injury to the user or cause damage to the instrument or user's data, and precautions that can be taken to prevent such occurrences.
<i>Note</i>	Calls attention to information that is important for the proper operation of the instrument.

Reference Item	
▶	Reference to related operation or explanation is indicated after this mark. Example: ▶ section 4.1

Conventions Used in the Procedural Explanations	
Bold characters	Indicates character strings that appear on the screen. Example: Volt
Procedure	Carry out the procedure according to the step numbers. All procedures are written under the assumption that you are starting operation at the beginning of the procedure, so you may not need to carry out all the steps in a procedure when you are changing the settings.
Explanation	The explanation section describes limitations and related information about the operation.

Images

The images used in this manual may differ from those that actually appear in the software. Such differences do not affect the procedural explanation.

Products That This Manual Covers

Product	Version
Data Acquisition Module GM10	Release number 1. Up to firmware version R2.02.xx. In the explanations in this manual, these are referred to as the "main unit" or "GM."
SMARTDAC+ STANDARD IP Address Configurator	Up to R.2.02.xx

Revision History

Edition	Software Version	Explanation
1	R2.02	New edition
2	Same as above	Added notes for using the security function (communication login) on the GM10.

Downloading the Latest Software and Manuals

Download the latest version of the IP Address Configurator from the following URL:
www.smartdacplus.com/software/en/

Download the latest manuals of the Hardware configurator, and the related manuals from the following URL: www.smartdacplus.com/manual/en/

Related Manuals

Manual Name	Manual No.
Data Acquisition System GM First Step Guide	IM 04L55B01-02EN
Data Acquisition System GM User's Manual	IM 04L55B01-01EN
SMARTDAC+ STANDARD Hardware Configurator User's Manual	IM 04L61B01-02EN

Blank

Contents

1

Introduction	i
Software License Agreement	ii
How to Use This Manual	iv

2

Chapter 1 Before Using the Product

1.1 Overview of IP Address Configurator	1-1
1.1.1 IP Address Configurator Features	1-1
1.1.2 Installation and Version Updating	1-1
1.1.3 Starting and Closing IP Address Configurator	1-2
1.2 PC System Requirements	1-3
1.2.1 Hardware	1-3
1.2.2 Operating System	1-3
1.2.3 Other Operating Conditions	1-3
1.2.4 Security Measures	1-3

App

Chapter 2 Setting IP Address

2.1 Names of the Parts of the Screen and How to Use Them	2-1
2.1.1 Start Window	2-1
2.1.2 List Display Screen	2-2
2.1.3 Address Setting Screen	2-3
2.2 Changing the IP Address	2-4
2.2.1 Connecting the GM to a PC Locally (One-to-One) and Changing the Address	2-4
2.2.2 Changing the Address of the GM Connected to the Network	2-4
2.3 Troubleshooting	2-6
2.3.1 What to Do When GMs Cannot Be Detected	2-6
2.3.2 If GM's Communication Is Set to Login and the IP Address Cannot Be Changed	2-6
2.3.3 Errors and Messages	2-6

Appendix

App. 1 Configuring/Removing the Firewall	App-1
--	-------

Blank

1.1 Overview of IP Address Configurator

1.1.1 IP Address Configurator Features

SMARTDAC+ STANDARD IP Address Configurator is a PC software application for configuring the communication parameters of the GM10 Data Acquisition Module (hereafter referred to as the GM).

IP address setting

You can edit a GM's host name, IP address, DNS server, domain name, domain suffix, and so on as well as register the host name to a DNS server.

GM searching

GM searching

Device call-up

You can send commands to GMs shown in the list. You can check the response by looking at the LED blinking on the GMs.

1.1.2 Installation and Version Updating

Download the latest installer from YOKOGAWA's website (www.smartdacplus/software/en/) to install and update the software: From the Help menu, you can view the software version information and access the link to the website.

Note

- Close all other software applications before installing this software.
- To reinstall the software, uninstall the current software first.

Procedure

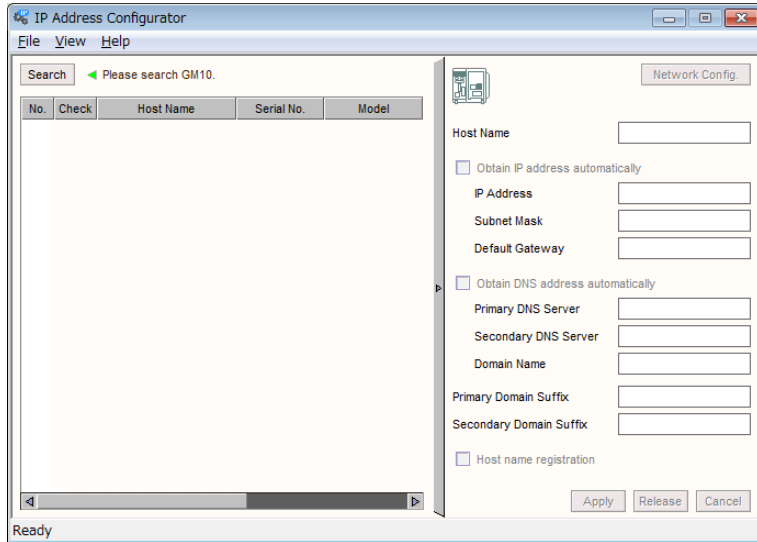
- 1 Double-click the downloaded file to extract the files.
- 2 In the extracted folder, right-click Install.exe, and click **Run as administrator**.
- 3 The installation wizard starts. Continue to follow the instructions on the screen to install the software.
- 4 When the installation is complete, click **Finish**.
SMARTDAC+STANDARD > IP Address Configurator will be registered under All Programs in the Windows Start menu.

1.1.3 Starting and Closing IP Address Configurator

Starting the Software


On the Start menu, click **All Programs, SMARTDAC+ STANDARD, and IP Address Configurator.**

The start window appears.



Names of the parts of the screen and how to use them: ► [section 2.1](#)

Closing the Software

On the File menu, click Exit Application. Or click the close button  in the upper right of the window.

1.2 PC System Requirements

1.2.1 Hardware

PC

A PC running Windows Vista, Windows 7 or Windows 8.1.

CPU and Main Memory

PC Configuration	OS	Requirements
CPU	Windows Vista/7/8.1 (32-bit edition)	Intel Pentium 4, 3 GHz or faster x64 or x86 processor.
	Windows 7/8.1 (64-bit edition)	Intel Pentium 4, 3 GHz or faster x64 processor.
Memory	Common	2GB or more.
Hard Disk		Free space of at least 100 MB (depending on the amount of data, you may need more disk space). NTFS recommended.
Mouse		A mouse compatible with the OS.
Display		A display that is compatible with the OS, that has a resolution of 1024×768 or higher, and that can show 65,536 colors (16-bit, high color) or more.
Communication port		Ethernet port compatible with the OS and TCP/IP protocol.
Printer		A printer compatible with your Windows system (a printer driver for the OS is required)

1.2.2 Operating System

OS	Edition
Windows Vista	Home Premium SP2 (excluding 64-bit editions)
	Business Edition SP2 (excluding 64-bit editions)
Windows 7	Home Premium SP1 (32- or 64-bit edition)
	Professional SP1 (32- or 64-bit edition)
Windows 8.1	Basic Edition (32- or 64-bit edition)
	Pro (32- or 64-bit edition)

1.2.3 Other Operating Conditions

To view the user's manual of this software, you need to use Adobe Reader 7 or later by Adobe Systems (the latest version is recommended).

1.2.4 Security Measures

To deal with security threats, we recommend that you take security measures.

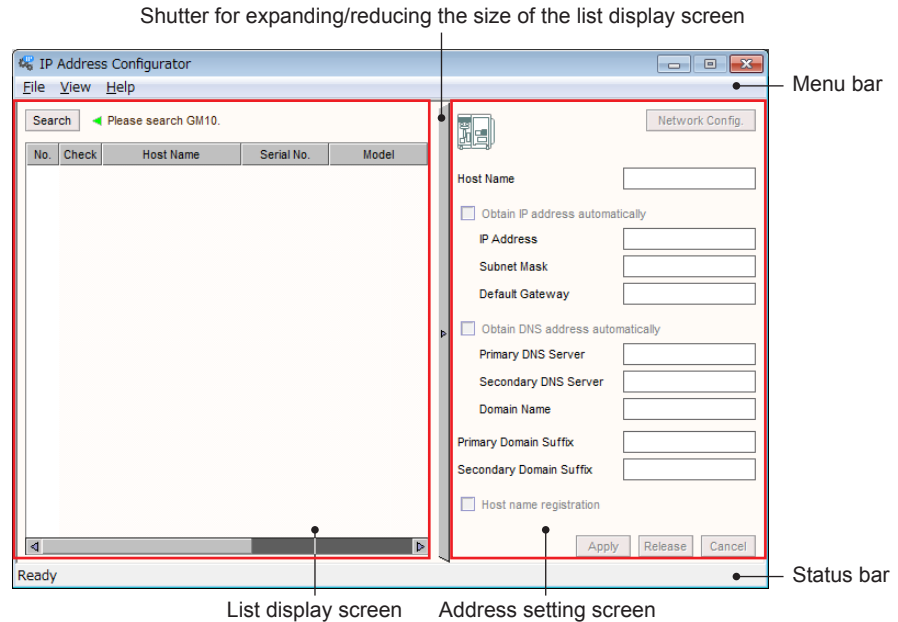
- Apply restrictions to PC network connections.
We recommend that you use an isolated network.
- Manage external media properly.
Prevent malware intrusion through external media, unauthorized file operations on external media, and information leakage due to misplacement.
- Set a strong password and manage it properly.
Use a password that is at least eight characters in length, and include three types of characters from uppercase letters, lowercase letters, numbers, and symbols. Change the password regularly.
- Install antivirus software.
This software has been verified to work on a PC running McAfee VirusScan Enterprise Ver. 4.8.0.887.

Blank

2.1 Names of the Parts of the Screen and How to Use Them

This section explains the window components. For the actual procedure to change the IP address, see section 2.2, “Changing the IP Address”

2.1.1 Start Window



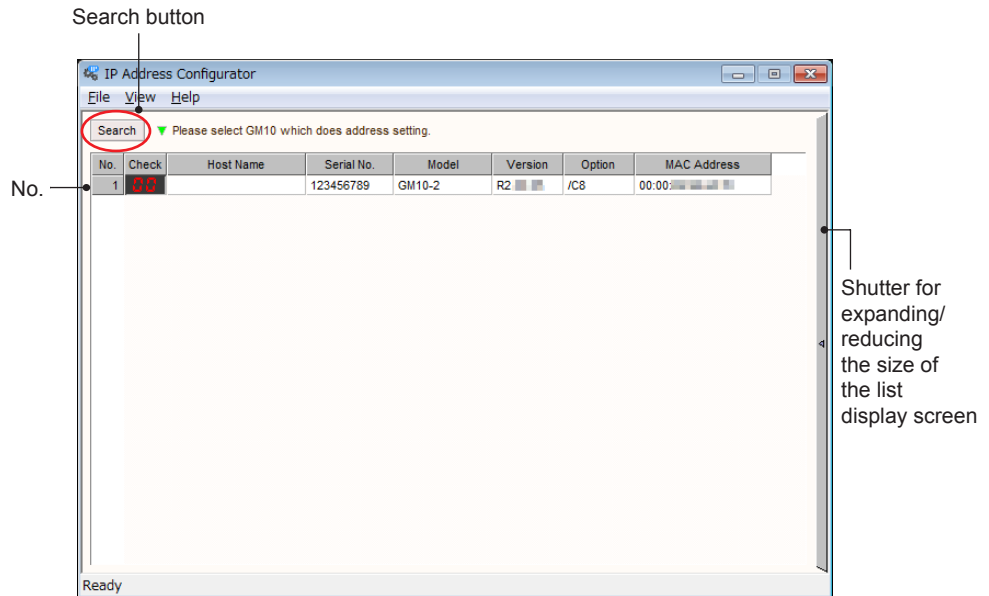
Clicking the shutter for expanding/reducing the size of the list display screen (the bar in the center of the window) hides the Address setting screen and shows the List display screen in the entire window. Clicking it again returns the Address setting screen.

Menu Commands

Menu		Description
File	Exit	Closes the software.
View	Status Bar	Shows or hides the status bar.
Help	User's Manual	Displays the user's manual (this manual).
	About	Displays the version of the software in use.
	Update	A link to the website for downloading the latest version of the software.

2.1.2 List Display Screen

Click Search to search for GMs in the same network segment and display the list of search results. Click a No. cell to select the GM you want to configure.



GM Information Displayed in the List

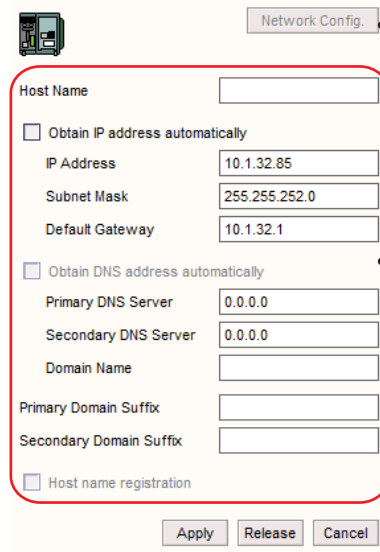
Item	Description
No.	1 to 255 numbers are assigned in retrieved order.
Check	If this button is clicked, the 7-segment LED on the main unit of the corresponding GM10 displays --CALL--.
Host Name	The host name is displayed if it is already registered.
Serial No.	The instrument number marked on the name plate of the main module.
Model	GM10-1 or GM10-2 is displayed.
Version	GM10 firmware version.
Option	GM10 option code. See the table below for the description.
MAC Address	The MAC address marked on the name plate of the main module.

Option Display and Description

Option	Description	GM Firmware Version and Availability
/C3	RS-422/485	R2.02.01 or later
/C8	Bluetooth	R2.02.01 or later
/MT	Mathematical function (with report function)	R2.02.01 or later
/MC	Communication channel function	R2.02.01 or later
/E1	EtherNet/IP communication	R2.02.01 or later
/E2	WT communicaton	R2.02.01 or later
/LG	Log scale	R2.02.01 or later
/AS	Advanced security function (Part 11)	R2.03.01 or later

2.1.3 Address Setting Screen

If the check box is selected, the items that can and cannot be set change. Dimmed setting items cannot be changed.



Network Config.
When you select a GM in the list, this button becomes available.

Click Network Config. to allow the settings of the GM selected in the list to be edited.

Cancel
Does not apply the changes, and returns to the condition before editing.

Release
Releases the GM you selected and the IP address obtained from the DHCP server. GMs are searched for again.

Apply
Applies the edited settings to the GM. GMs are searched for again.

Items on Address Setting Screen

Item	Description
Host Name	Set the host name. Up to 64 alphanumeric characters can be entered.
Obtain IP address automatically	Select the check box to automatically obtain the IP address from the DHCP server. To set the IP address manually, do not select the check box. Enter the IP address, subnet mask, and default gateway. Do not select the check box when connecting to the PC locally.
IP Address	Enter the IP address to assign to the GM. The default value is 0.0.0.0.
Subnet Mask	Enter the mask value used when determining the subnet network address from the IP address. The default value is 0.0.0.0.
Default Gateway	Set the IP address of the gateway (default gateway) used to communicate with other networks. The default value is 0.0.0.0. When connecting to the PC locally in a one-to-one relationship, this value does not need to be changed. In this case, you do not have to set the default gateway on the PC.
Obtain DNS address automatically	Select the check box to automatically obtain the DNS server IP address and domain name from the DHCP server. To set the DNS information manually, do not select the check box. Enter the primary DNS server, secondary DNS server, and domain name.
Primary DNS Server Secondary DNS Server	You can specify two DNS servers. Be sure to set an IP address.
Domain Name	Specify the domain name that the device belongs to. Up to 64 alphanumeric characters can be entered.
Primary Domain Suffix Secondary Domain Suffix	Up to 64 alphanumeric characters can be entered. The domain suffix is a domain name that is supplemented automatically when the mail server and the like are set only with the host name.
Host Name registration	Select the check box to register host names to the DNS server. Dynamic DNS (DDNS), which automatically registers host names to the DNS server, will be enabled. However, this requires that the DNS server support DDNS.

Note

Consult your network administrator for details of each setting item.

2.2 Changing the IP Address

Before carrying out the procedure below, turn ON the power to the relevant GMs and connect the GMs to the network using Ethernet cables. When connecting the GMs to the network, make the connection after changing the factory default IP address. (See [2.2.1 Connecting the GM to a PC Locally \(One-to-One\) and Changing the Address](#))

Note

When the GM (firmware version R2.03.01 or later) is in either of the following conditions, the IP address cannot be changed.

- In security settings, **Communication** is set to **Login**.
- The advanced security function (/AS option) is set to **On**, and the GM is recording.

Related topic: ▶ [2.3.2 If GM's Communication Is Set to Login and the IP Address Cannot Be Changed](#)

2.2.1 Connecting the GM to a PC Locally (One-to-One) and Changing the Address

Locally connect the GM to a PC in which the Address Configurator is installed (one-to-one connection), and change the IP address. The procedure to change the address is the same as that shown below.

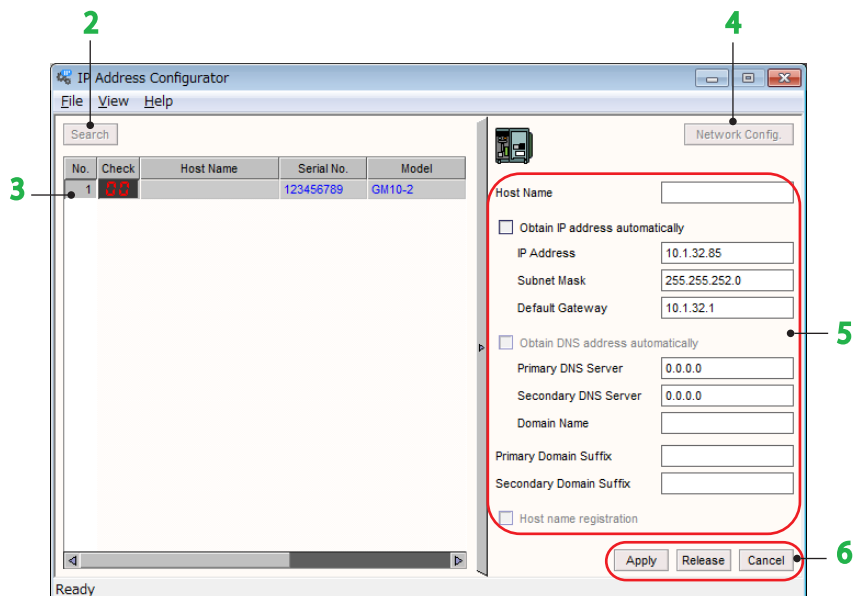
When making a local (one-to-one) connection with the PC, do not set the PC to obtain the IP address automatically. Enter the IP address manually to an address other than the one that is to be assigned to the GM.

Setup Example of the PC and GM

IP address of the PC	192.168.0.100
Subnet mask of the PC	255.255.255.0
IP address of the GM	192.168.0.10
Subnet mask of the GM	255.255.255.0

2.2.2 Changing the Address of the GM Connected to the Network

Procedure



1. Start the IP Address Configurator.
The Address Setting screen is displayed..
2. Click the **Search** button in the List display screen.
The GMs residing in the same segment are displayed.

3. Click the **No.** of the GM whose address you want to change. The information of the selected GM is shown in blue characters.
4. Click **Network Config.** in the Address setting screen. This enables changes to the settings.
5. Enter settings for each item. (See [2.1.3 Address Setting Screen](#) for the details.)
6. Click **Apply** to change the settings of the GM, **Cancel** to exit without saving changes, or **Release** to clear the IP address from the DHCP server.

Note

////////////////////////////////////
To check whether the IP address was obtained correctly each time, click the Apply button, wait a few moments, then click the Search button in the List display screen. If you click the Search button immediately after the change, the IP address, subnet mask, and default gateway may be displayed as 0.0.0.0.
////////////////////////////////////

2.3 Troubleshooting

2.3.1 What to Do When GMs Cannot Be Detected

If GMs are not detected even when you click Search, check the following.

- Check the internet connection status using the ping command. If the ping fails, check the cables, hub, IP address settings, and other factors to determine the cause.
- Check that procedures performed on the software are correct.
- If the Windows OS firewall is enabled, GMs may not be detected even when you click Search.
 - For the workaround on Windows 7, see the [Appendix](#).
 - For other Windows versions, configure "Allow a program or feature through Windows Firewall".
 - For details on how to change the settings, check the Microsoft support website.
- Note that this software does not support multiple network adaptors. If the multiple network adaptors are being enabled (example: Both cable LAN and wireless LAN), disable the network connections other than GM.
 - Windows 7: Go to **Start > Control Panel > Network and Sharing Center**, then click **Change adapter settings** in the left-hand column. Right-click on the unused connection and select **Disable**.

2.3.2 If GM's Communication Is Set to Login and the IP Address Cannot Be Changed

In the security settings of the GM, if Communication is set to **Login**, you cannot change the IP address from this software. To change the GM IP address, use either of the following methods.

- When serial communication, USB communication, or Bluetooth communication is possible between the GM and PC
Connect the GM to the PC using one of the communication schemes, and use SMARTDAC+ Hardware Configurator to change the IP address. If you use this method, you do not have to turn off the GM.
- When local Ethernet (one-to-one) connection is possible between the GM and PC
Connect the GM to the PC locally with an Ethernet cable. Turn off the GM, and restart it in fixed IP address mode. Then, use the GM's Web application or SMARTDAC+ Hardware Configurator to change the IP address.

Note

- For details on the GM fixed IP address mode and Web application, see the *GM Data Acquisition System User's Manual* (IM 04L55B01-01EN).
- For details on how to use Hardware Configurator, see the *SMARTDAC+ STANDARD Hardware Configurator User's Manual* (IM 04L61B01-02EN).

2.3.3 Errors and Messages

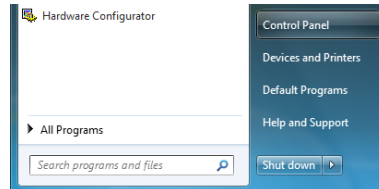
Code	Message	Description and Corrective Action
5000	Failed to store.	<p>Check the operation mode of the GM.</p> <p>If the GM is in a mode other than the normal operation (such as A/D calibration, Encryption, and Update), return it to the normal mode.</p> <p>Or, check the GM security settings. The IP address cannot be changed in the following situations.</p> <ul style="list-style-type: none">• Security settings > Security basic settings > Security function > Communication is set to Login.• The advanced security function (/AS option) is set to On, and recording is in progress.

App. 1

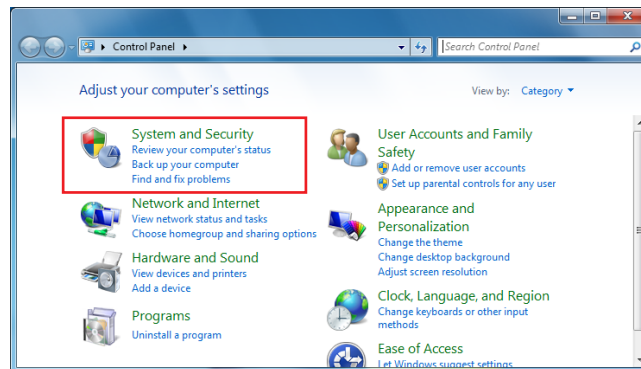
Configuring/Removing the Firewall

On Windows 7

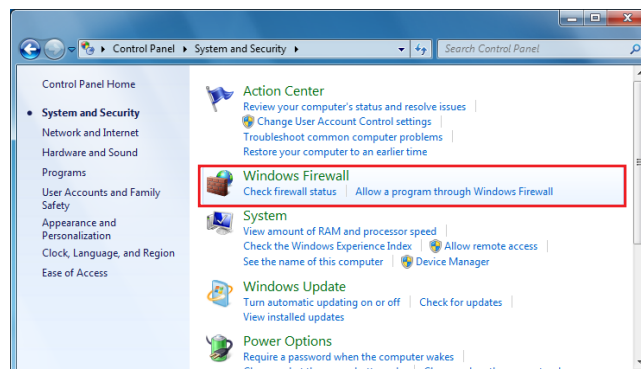
1. Click the **Control panel** on the Windows **Start** menu.
The **Control Panel** appears.



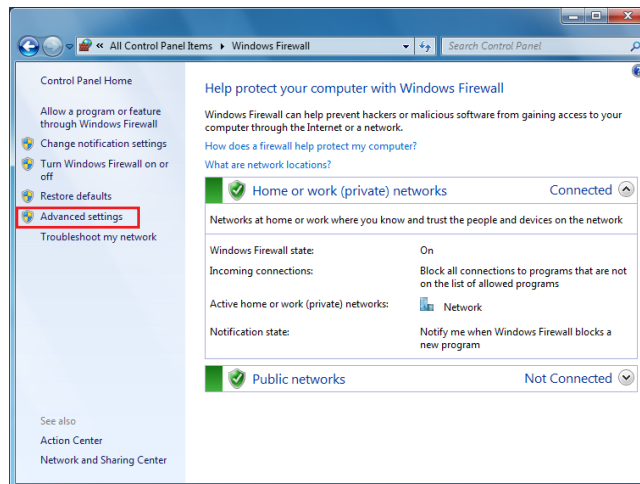
2. Click **System and Security**.



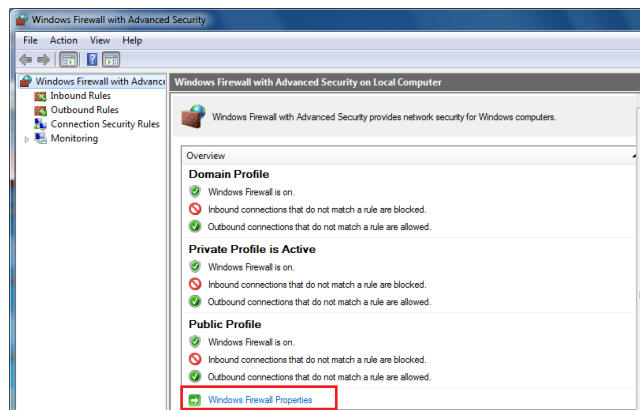
3. Click **Windows Firewall**.
The **Windows Firewall Settings** dialog box is displayed.



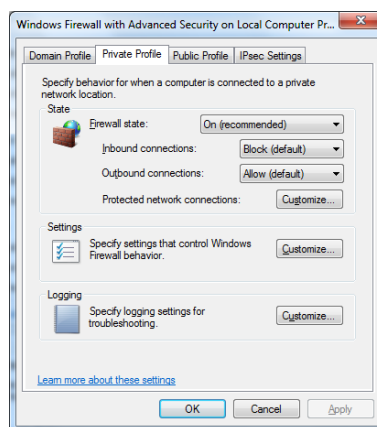
4. Click **Advanced settings**.



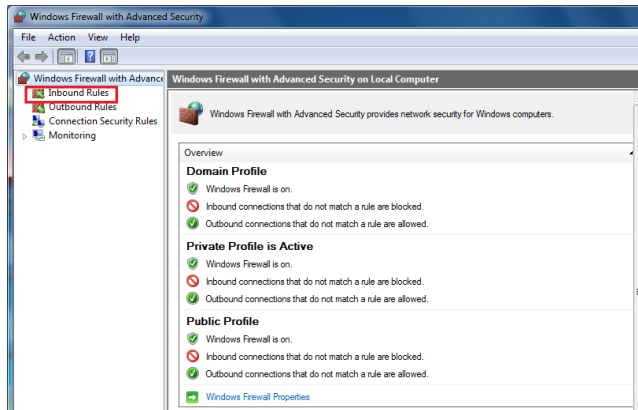
5. Click **Windows Firewall Properties**.



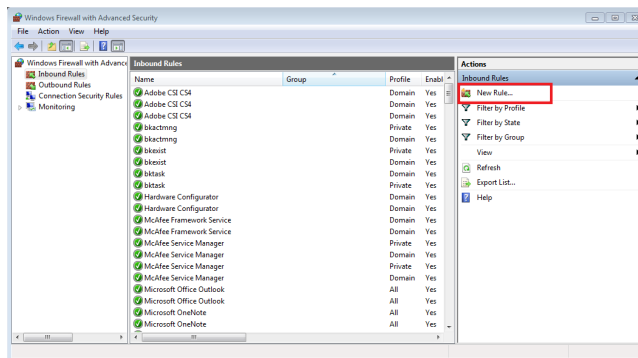
6. Click the tab of the profile appropriate for your operating environment. When the **Firewall state** is **Off**, click **Cancel** to exit. When the **Firewall state** is **On**, and **Inbound connections** or **Outbound connections** is **Block**, proceed to next step.



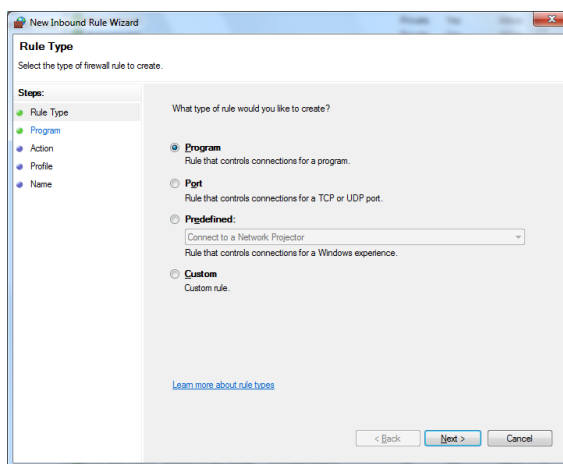
7. Click Inbound Rules.



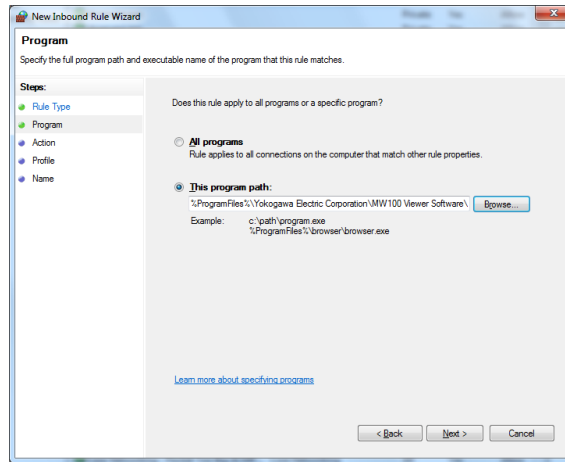
8. Click New Rule in the Actions pane.



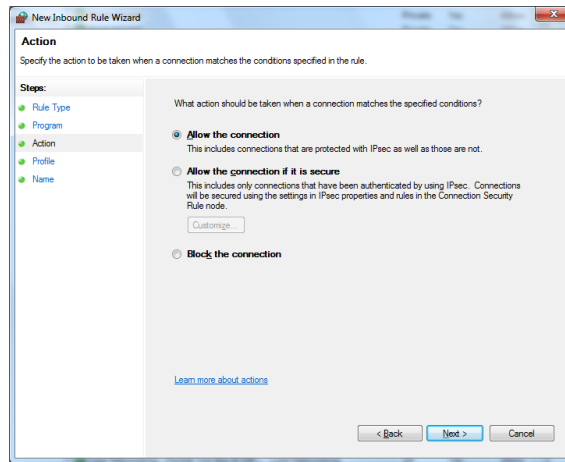
9. Select the Program check box. Click Next.



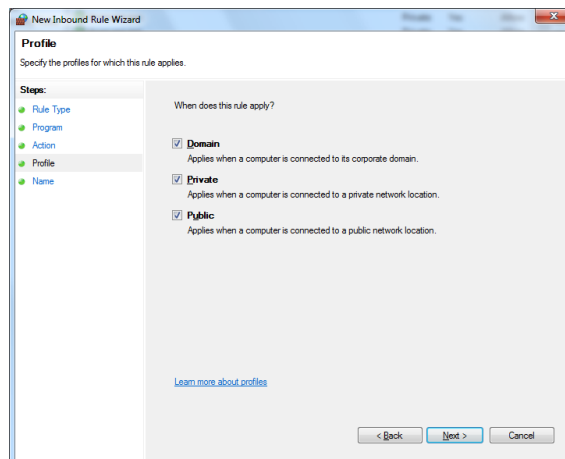
10. Select the **This program path** check box. Select **GMIPConfigE.exe** from the software's installation folder and click **Next**.



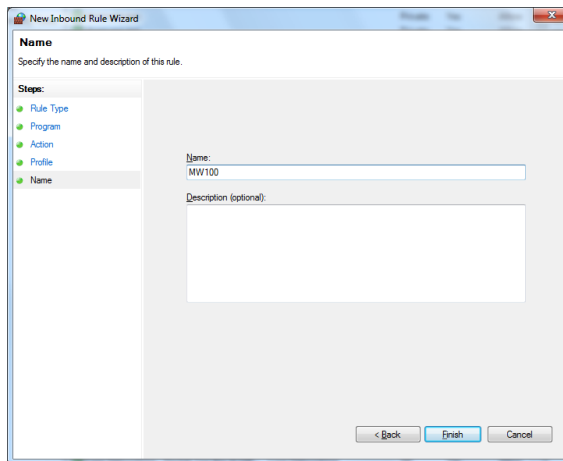
11. Select the **Allow the connection** check box. Click **Next**.



12. Specify the profiles for which this rule applies. Click **Next**.



13. Specify the name of this rule, and click **Finish**.



Blank