



SMOKE NV  
E-SHISHA



Australia: 0295 201 821 [www.smokenv.com.au](http://www.smokenv.com.au)

© 2014 Smoke NV Inc. All rights reserved. Formulated in Canada. Assembled in China. Smoke NV is not associated with any health claim and is not associated with nor intended to be used with nicotine nor any other drug. Smoke NV Inc. Tel: 0295 201 821 Heathcote, NSW, Australia 2233 [www.smokenv.com.au](http://www.smokenv.com.au)

USER MANUAL

## HOW TO USE THE SMOKE NV E-SHISHA

1. Mount the rechargeable battery to the top of the hookah. Use or remove the clear silicone gasket found on the bottom of the battery to help secure it in place.
2. Remove the red sticker from the top of the rechargeable battery.
3. Remove the clear silicone cap from the bottom of the refillable cartridge (do not remove the black stopper).
4. Mount the refillable cartridge to the top of the rechargeable battery.
- \* *For first time use: Mount and remove the cartridge and repeat 3-4 times.*
5. Wait 5 minutes.
6. Start smoking!



## ABOUT E-SHISHA

Introducing Smoke NV E-Shisha - an innovative new product that will revolutionize your Shisha experience! Simply place the Smoke NV E-Shisha on any traditional Shisha base and you're ready to enjoy smoking with no coal, no lighters, no molasses, and no mess! It is easy-to-use and starts up quickly with volumes of vapor produced in seconds! Enjoy, Engage, and Escape with the new E-Shisha by Smoke NV.

- Enjoy a variety of flavors to choose from.
- No coal, no lighters, no molasses and no mess.
- Smoke on demand and stop on demand.
- Use with any traditional Shisha base and pipes.
- A healthier alternative to traditional Shisha Smoking with No Nicotine and No Tobacco.

## USER PROFILE

### SUITABLE USER:

---

- People who are determined to smoke in a healthier way.
- People working in non-smoking areas, but with the habit of smoking.
- People with long smoking history and suffering from discomfort.

### UNSUITABLE USER:

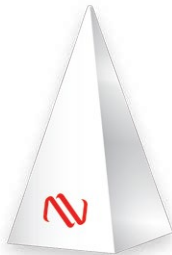
---

- Pregnant or breast-feeding women.
- People under the legal age.
- People without the habit of smoking.

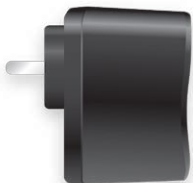
## KIT COMPONENTS



Smoke NV E-Shisha  
User Manual



Smoke NV E-Shisha  
Empty Refillable Cartridge



Smoke NV E-Shisha  
Wall Charger



Smoke NV E-Shisha  
Rechargeable Battery



Smoke NV E-Shisha  
USB Cable



Clear Silicone Gasket

## BATTERY OPERATION

- Red Light (constant) = smoking in process
- Red Light (constant) = charging in process
- Red Light (flashing) = low battery
- Green Light = fully charged



## INGREDIENTS

**All ingredients are food grade.**

Ingredients: Vegetable Glycerin, Water & Artificial Flavorings.

## GENERAL NOTES

- When not in use, remove the Refillable Cartridge from the Rechargeable Battery.
- Keep away from water.
- Keep away from the reach of children.
- Disconnect from the charger once fully charged.
- Do not eat or drink the E-Liquid (not edible).

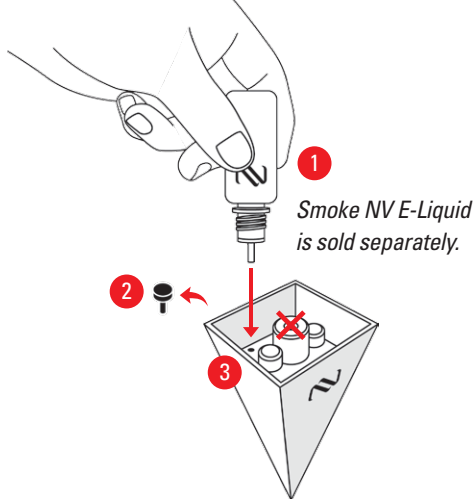
## TROUBLESHOOTING

**Low or no smoke produced:**

- Low battery: need to recharge.
- No Liquid: refill the refillable cartridge.
- E-shisha is not mounted properly to the shisha base; re-connect the device.

## HOW TO FILL THE REFILLABLE CARTRIDGE

1. Take the E-Liquid Bottle and unscrew the cap (be sure to press down then twist).
2. Take the Refillable Cartridge and remove the black stopper from the back. (Ensure the cartridge is held upside down, to ensure no leaking).
3. The nozzle of the bottle should be inserted into the refillable cartridge hole.
4. The bottle should not be held at an angle and should be upright.
5. Lightly squeeze the bottle to let out the E-Liquid.
6. The 15mL bottle will fill up the refillable cartridge in full.
7. Once done, place the black stopper onto the back of the cartridge to seal it.



**Please note:** The cartridge is only good for 50-65 refills before needing to purchase a new refillable cartridge. We recommend reserving one refillable cartridge just for Menthol E-Liquid flavor as the menthol taste may affect the taste of other flavors.