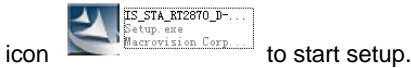


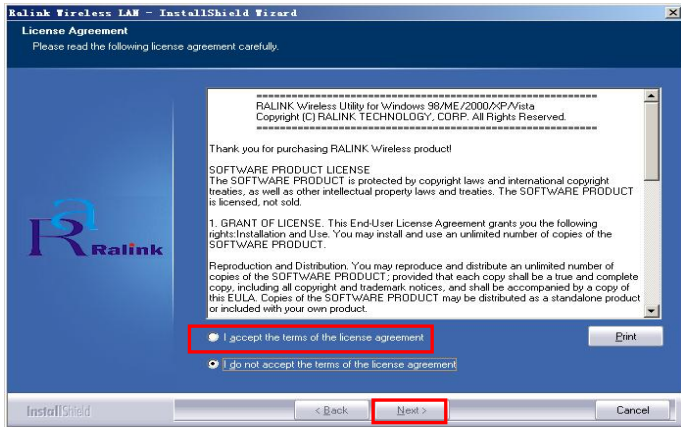
# 150Mbps Wireless N USB Adapter user's manual

1. Install the driver.

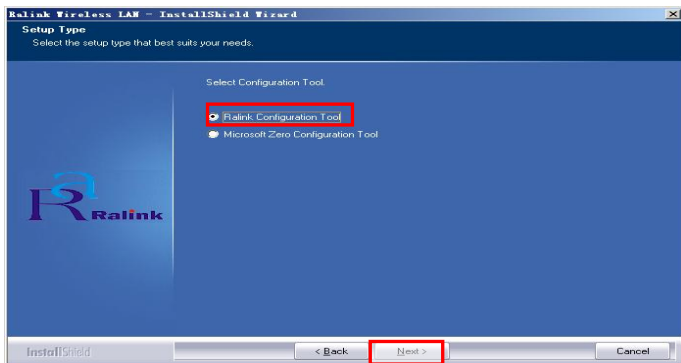
- a. Insert the installation CD into your CD-ROM driver, Double click the



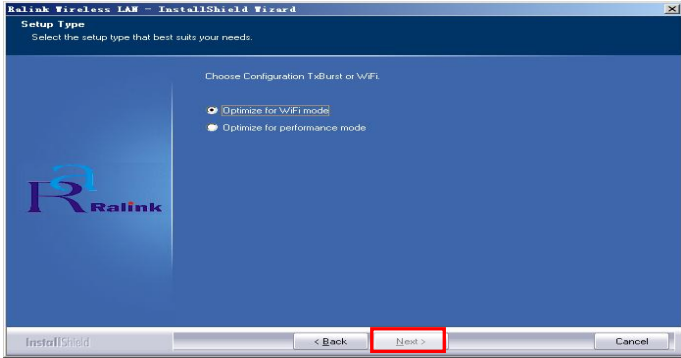
- b. Select ***I accept the terms of licence agreement*** and click next to continue.



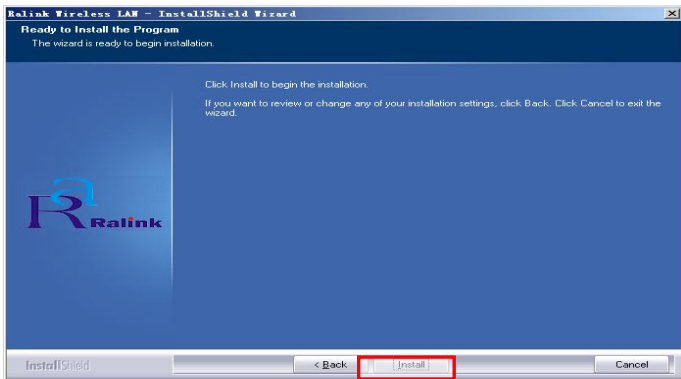
- c. Select ***Ralink configuration Tool*** and click ***next*** to continue



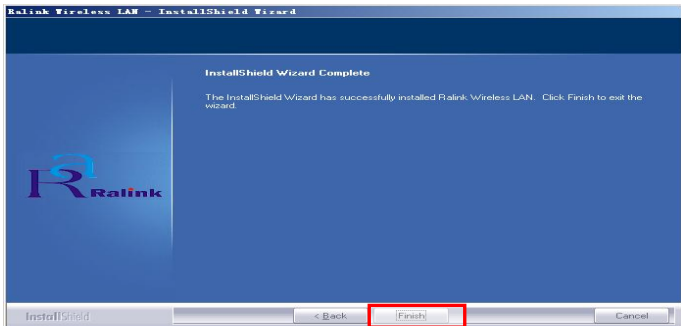
- d. Select ***optimize for wifi mode*** and click ***next*** to continue



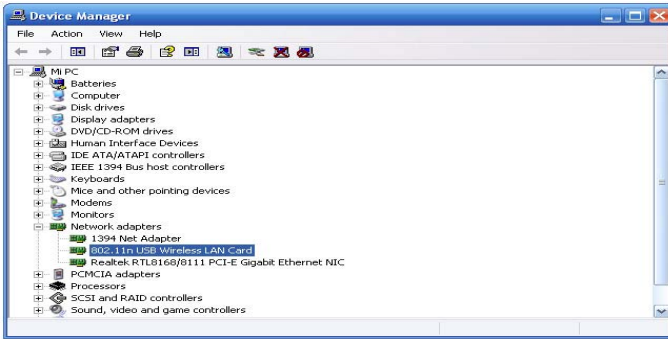
- e. Click **Install** to begin the installation



- f. Click **Finish** to end the setup



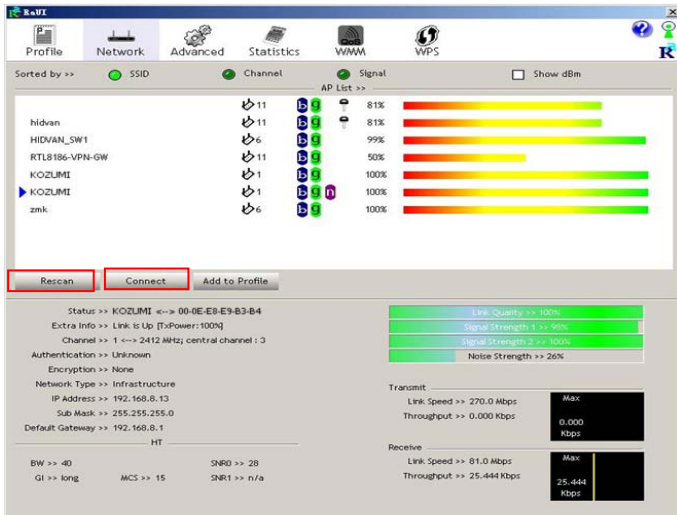
2. Plug in your USB wireless LAN adapter, it will be recognized and auto installed, Just confirmed it like below:



3. Made infrastructure connection Double click



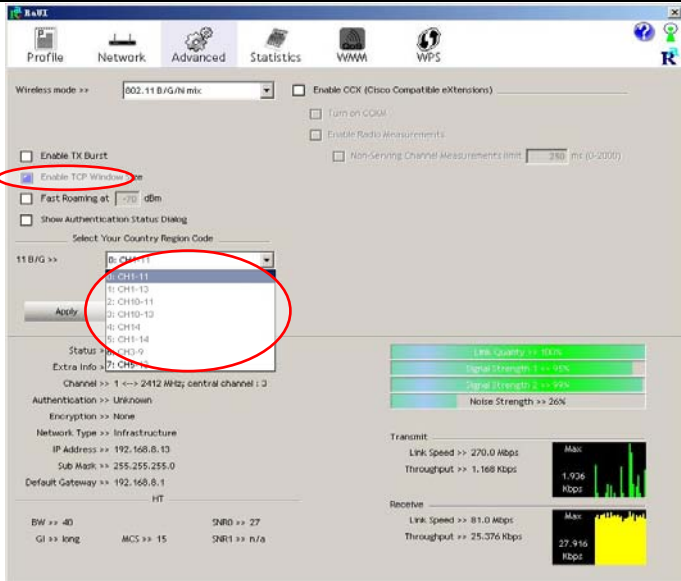
You will see:



You can click the button **Rescan** to find which AP is in range, They will show on the window, choice one you want to connect, and click the button **connect**.

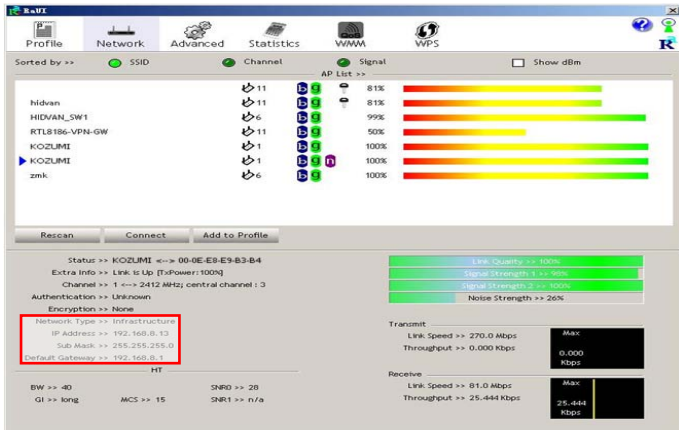
An infrastructure connection is accomplished.

**Note!** Please choose correct channel setting up to your law, for example, ch13 is permitted in your country, and you set your router at ch13, while you choose ch1-ch11(default setting), you will never find the AP, and you will have to choose ch1-ch13 setting in **Advanced** page as below.



#### 4. Some help information in **Ralink Wireless Utility**

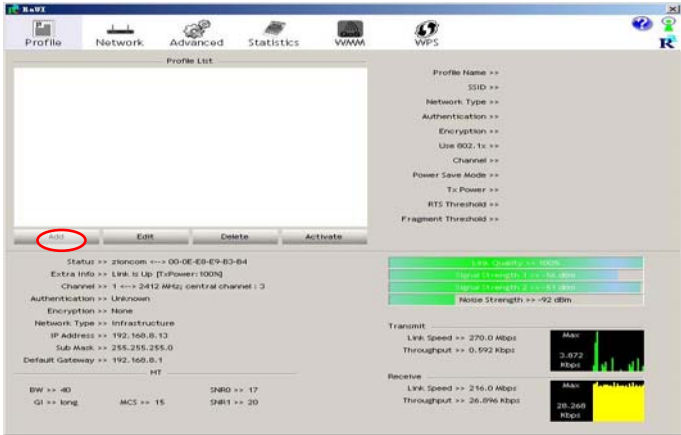
How to find out your IP address?



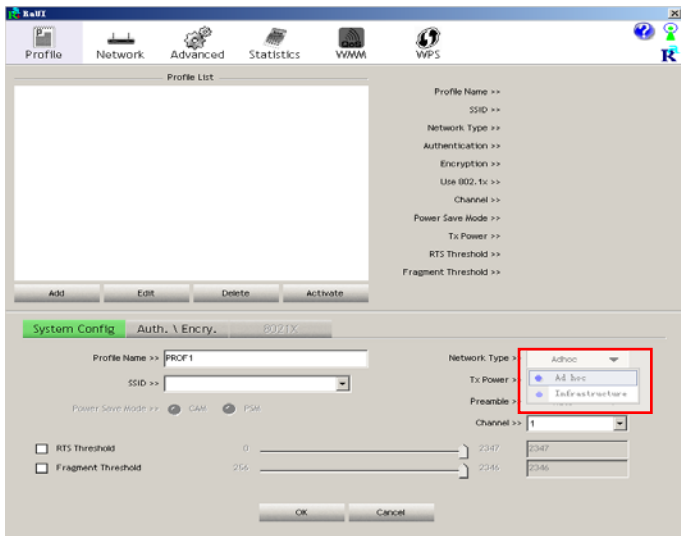
#### 5. Made Ad-hoc mode connection

##### 5.1 Make an Ad-hoc SSID

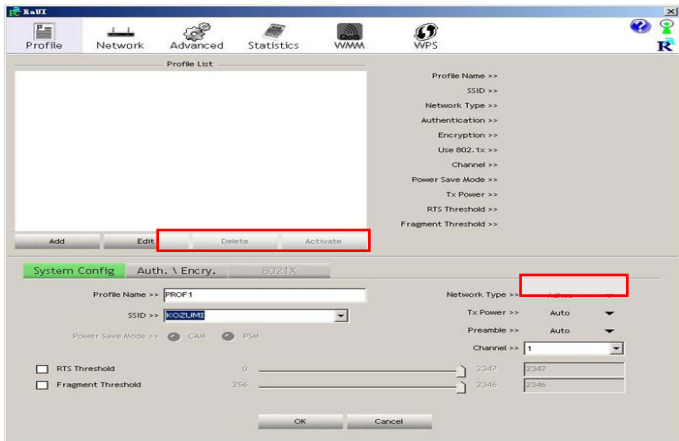
- Click add



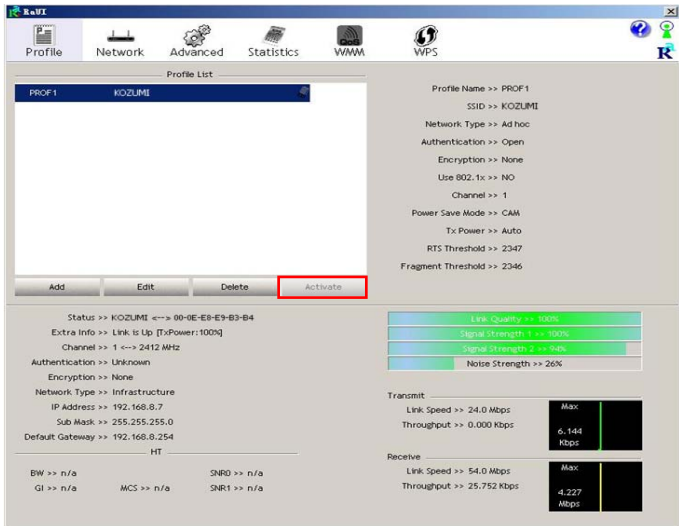
- Choose **Ad-hoc**



- name your SSID and choose which channel you want to take for the link



- Activate the link.



## 5.2 Setup static IP address for the AD-Hoc link

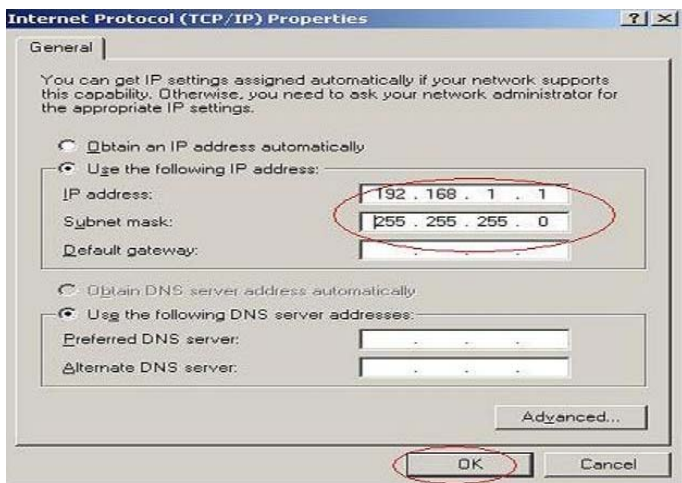
- At its property page, double click item **Internet Protocol(TCP/IP)**



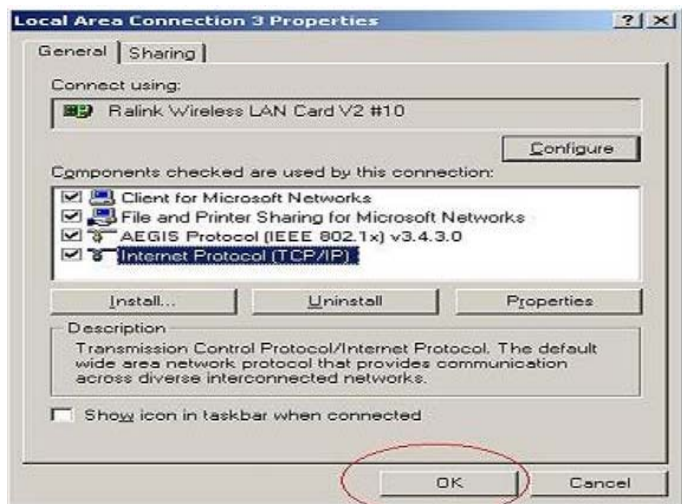
- You will get



- Fill the IP address blank,example as below:



- Click ok to finish the setup



5.3 Ad-Hoc setup for one point accomplished

5.4 Setup another Ad-hoc point as step A, B, C, D.

5.5 Ad-hoc mode link accomplished. And you can visit each other.

**Note!** To make an Ad-Hoc mode link. Do remember to choice the same channel. Its static IP address should be in the same netsub, and the SSID should be the same too.