

Kensington®

Pocket Media Center User Manual

READ FIRST!



Card Reader Side



High Speed USB 2.0 Hub Side

Please read this short manual to learn valuable information about the proper use and installation of your new Kensington Pocket Media Center. Register your new Kensington Pocket Media Center on line at www.register.kensington.com.

Included in This Package

- The Kensington Pocket Media Center
- This User's Manual
- USB Cable
- AC Adapter
- Travel Bag

System Requirements

Hardware:

- PC with a Pentium® processor or equivalent, or Macintosh® with PowerPC or higher
- USB port (USB 2.0 recommended for faster data transfer)

Operating System:

- Windows 2000 with Service Pack 3, or XP with Service Pack 1
- Mac® OS 10.2.2 or higher

Installation Instructions

Windows XP, 2000, and Mac OS



NOTE: For Windows 2000 and XP, please download the “latest” service pack from the Microsoft® Web site <http://windowsupdate.microsoft.com> and install it before you install this product.

You must be logged into Windows with the appropriate privileges to install a hardware device. If you have difficulties installing the reader on a computer at your office (or on a company-provided notebook computer), please ask your company's network administrator.

1. With your computer running, plug the Kensington Pocket Media Center into an available USB port as described on page 4.
2. These operating systems will detect the reader as a new device and install the appropriate device drivers automatically.

Connecting the Reader

Using the included cable, plug in the type B mini USB plug into the Kensington Pocket Media Center.



Then plug the standard type A USB plug into an available USB port on your computer.



Make sure that the cable is firmly connected, but do not force it.

There is no need to turn off your computer before connecting or disconnecting a USB device.

The Kensington Pocket Media Center is a USB 2.0 device. If you plug the reader into an older USB 1.x port or hub, Windows XP will display a warning message.

Close the message window to continue. The reader will work with a USB 1.x connection, but it will operate at reduced speed (a maximum of 12 Megabits per second, compared to 480 Megabits per second maximum with USB 2.0).

Using the Reader

Inserting a memory card into the reader

You can insert memory cards into the reader while the computer is running. A slight delay is normal before the computer recognizes the new memory card.



The Kensington Pocket Media Center supports 15 types of memory cards.

Make sure that you insert the memory card firmly but gently into the appropriate slot as illustrated above. Do not attempt to force a memory card into a slot.

Compact Flash/IBM MicroDrive: Look for the connectors along one edge of the card. Insert that edge of the card into the reader, with the card's label facing up.

Memory Stick: Insert with the rounded corner at the upper left and the gold contacts facing down.

Smart Media card: Insert with the notched corner at the upper right and the gold contacts facing up.

MultiMediaCard/Secure Digital card: Insert with the notched corner at the upper right and the gold contacts facing down.

Viewing the Contents of the Memory Card

Windows:

The reader's four media slots appear in My Computer as four Removable Disks.



Removable Disk (E:)



Removable Disk (F:)



Removable Disk (G:)



Removable Disk (H:)

The actual drive letters displayed in My Computer may vary from this example if you have multiple hard drives, mapped network drives, CD-ROM drives, or other removable media drives installed in your computer. On your computer they could appear as (G:), (H:), (I:), and (J:), or any other combination of letters.

No matter what drive letters are used, the order of the four Removable Disks is the same. The disk drive icons represent the following memory card slots, in this order:

(E:) Compact Flash/IBM MicroDrive

(F:) Smart Media

(G:) Secure Digital /MultiMediaCard

(H:) Memory Stick

If you insert an IBM MicroDrive memory card, the "Removable Disk" label for the first media slot changes to "MICRODRIVE."

To see the contents of the memory card, double-click on the appropriate drive icon.

On some Windows XP systems where mapped network drives are used and available drive letters are not continuous, the removable drive may be overlapped with the network drive letter, causing the drive letter to be reassigned. Use the "Disk Management" facility provided by Windows XP to follow the proper steps. Once the new drive letters are assigned, there should be no future conflicts regardless of which USB port the product is connected to.



IMPORTANT: If you do not see the disk drive icons in My Computer, unplug the reader from your computer's USB port and then plug it in again.

Mac OS:

When you insert a memory card into one of the reader's four media slots, the memory card appears on your Mac OS desktop as a removable disk drive.



Memory cards appear on your Mac OS desktop as disk drive icons.

If you insert an IBM MicroDrive memory card, the new disk drive icon will be labeled "MICRODRIVE." Otherwise, the new drive will appear as "Unlabeled."

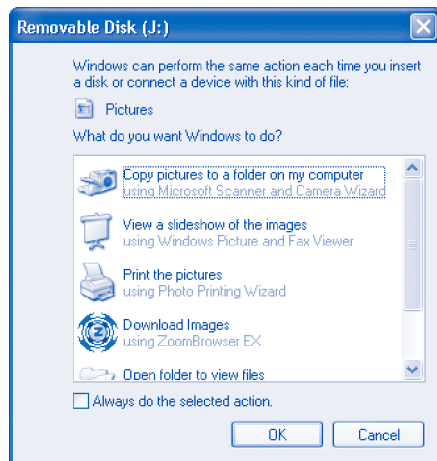
To see the contents of the memory card, double-click on the appropriate drive icon.



IMPORTANT: If you have inserted a memory card into the slot and still do not see the disk drive icon on your Mac OS desktop, unplug the reader from your computer's USB port and then plug it in again.

Copying Files From a Memory Card

You can copy files from a memory card in the same way that you copy files from any diskette or CD-ROM. Make sure that the data transfer between the memory card and your computer is complete before you remove the memory card.



When you insert a memory card under Windows XP, a window may pop up with a choice of options. Choose the option you want and click **OK**.

Removing a Memory Card From the Reader

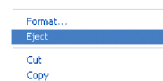
You can remove memory cards from the reader while your computer is running, but it is important never to remove a card while the reader is transferring information to your computer.

To remove a memory card safely:

1. If the reader is transferring data, wait until the transfer is complete.
2. Follow the steps below for your operating system to safely eject the card:

All Windows Operating Systems:

- a. Open My Computer.



- b. Right-click on the disk drive icon for the memory card that you wish to eject, and choose **Eject**.
- c. Remove the memory card from the reader.

Mac OS:

- a. Drag the disk drive icon for the memory card to the trash.
- b. Remove the memory card from the reader.

Disconnecting the Reader While Your Computer is Running

You can connect and disconnect the reader while the computer is running. However, you should never remove a memory card or unplug the reader while it is transferring data.

To safely unplug the reader:

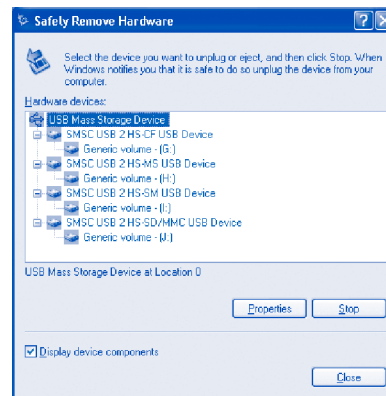
1. If the reader is transferring data, wait until the transfer is complete.
2. Properly eject any memory cards, and remove the cards from the reader as described on page 9.
3. Follow the instructions below for your operating system to safely unplug the reader.

Disconnecting the reader under Mac OS:

Once you have ejected any mounted memory cards by dragging their icons to the trash and removing the cards from the reader, you can safely unplug the reader from your computer.

Disconnecting the reader under Windows XP:

- a. Double-click the **Safely Remove Hardware**  icon in the system tray.



- b. Select USB Mass Storage Device and then click the **Stop** button.



- c. Click **OK**, and then close the Safely Remove Hardware window.
- d. Disconnect the reader from your computer's USB port.

Specifications

Supported Media Formats

- Compact Flash® Card (Types 1, 2, Ultra 2, Ultra 3, and Extreme)
- Secure Digital™ Card (standard SD, mini, Ultra, and Extreme)
- Memory Stick™ (standard, Duo, and Pro)
- SmartMedia™ Card
- IBM Microdrive
- MultiMediaCard (MMC)

Data Rates

The Kensington Card Reader can transfer data at up to 480 Megabits per second. If your computer, operating system, and USB port (and USB hub if you use one) support USB 2.0, your card reader will automatically use this high-speed transfer. If not, your card reader will still work, but at the USB 1.1 full speed of 12 Megabits per second. With USB 2.0, the transfer rate is limited by the read/write speed of the flash memory card. The actual data transfer rate is also limited by the storage media itself. Reference your memory card manual for the specification of the memory card.

Hardware built before April 2002 usually supports USB 1.1. If your computer has USB 1.1 ports built in, you can purchase a USB 2.0 plug-in card. The following operating systems support USB 2.0: Windows 2000 with Microsoft USB driver version 5.1.2600.0, Windows XP with Service Pack 3 or higher, and Mac OS 10.2.2 or higher.

Technical Support

In North America, technical support is available to all registered users of Kensington products. There is no charge for technical support except long distance charges where applicable. Technical Support Contact information can be found on the back cover of this manual.

Technical Support Tips

- You may find the answer to your problem in the Frequently Asked Questions (FAQ) section of the Support area on the Kensington Web site: www.support.kensington.com.
- Call from a phone where you have access to your computer.
- Be prepared to provide the following information
 - Name, address, and telephone number
 - The name of the Kensington product
 - Make and model of your computer
 - Your system software and version
 - Symptoms of the problem and what led to them

1-Year Warranty

KENSINGTON TECHNOLOGY GROUP ("KENSINGTON") warrants this PRODUCT against defects in material and workmanship under normal use and service for one year from the original date of purchase. KENSINGTON, at its option, shall repair or replace the defective unit covered by this warranty. Please retain the dated sales receipt as evidence of the date of purchase. You will need it for any warranty service.

In order to keep this warranty in effect, the product must have been handled and used as prescribed in the instructions accompanying this warranty. This warranty does not cover any damage due to accident, misuse, abuse, or negligence. This warranty is valid only if the product is used on the computer or system specified on the product box. Please check product box for details or call technical support.

Repair or replacement, as provided under this warranty, is your exclusive remedy. KENSINGTON shall not be liable for any incidental or consequential damages. Implied warranties of merchantability and fitness for a particular purpose on this product are limited in duration to the duration of this warranty.

Some states/countries do not allow the exclusion or limitation of incidental or consequential damages, so the above limitation or exclusion may not apply to you. Some states/countries do not allow limitations on how long an implied warranty lasts, so the above limitation may not apply to you. This warranty gives you specific legal rights, and you may also have other rights that vary from state to state and country to country.

Federal Communications Commission Radio Frequency Interference Statement

Note: The Kensington Pocket Media Center model no. 33216 has been tested and found to comply with the limits for a Class B digital device, pursuant to Part 15 of the FCC Rules. These limits are designed to provide reasonable protection against harmful interference in a residential installation. This equipment generates, uses and can radiate radio frequency energy and, if not installed and used in accordance with the instructions, may cause harmful interference to radio communications.

However, there is no guarantee that interference will not occur in a particular installation. If this equipment does cause harmful interference to radio or television reception, which can be determined by turning the equipment off and on, the user is encouraged to try to correct the interference by one or more of the following measures:

- Reorient or relocate the receiving antenna.
- Increase the separation between the equipment and receiver.
- Connect the equipment into an outlet on a circuit different from that to which the receiver is connected.
- Consult the dealer or an experienced radio/TV technician for help.

MODIFICATIONS: Modifications not expressly approved by Kensington may void the user's authority to operate the device under FCC regulations and must not be made.

SHIELDED CABLES: In order to meet FCC requirements, all connections to equipment using a Kensington input device should be made using only the shielded cable provided.

Declaration of Conformity Compliance Statement for the Kensington Pocket Media Center

The Kensington Pocket Media Center model no. 33216 complies with Part 15 of the FCC Rules. Operation is subject to two conditions: (1) This device may not cause harmful interference, and, (2) this device must accept any interference received, including interference that may cause undesired operation. As defined in Section 2.909 of the FCC Rules, the responsible party for this device is Kensington Technology Group, 333 Twin Dolphin Drive, Sixth Floor, Redwood Shores, CA 94065, USA, (650) 572-2700.

Contacting Kensington

Troubleshooting information and answers to frequently asked questions are available 24 hours a day on the Kensington Web site at www.support.kensington.com.

Support by Telephone

Technical Support is available by telephone.
Please visit www.kensington.com for hours.

U.S. and Canada 800-535-4242 or 650-572-2700
Mexico 52(55)5384-0620



Kensington Technology Group
333 Twin Dolphin Drive
Sixth Floor
Redwood Shores, CA 94065
USA

ACCO Europe PLC
Gatehouse Road
Aylesbury
Bucks, HP19 8DT
UNITED KINGDOM

ACCO Canada Inc.
5 Precidio Court
Brampton, Ontario L6S 6B7
CANADA

www.kensington.com

This manual is copyright © 2005 Kensington Technology Group, a division of ACCO Brands, Inc. Any unauthorized copying, duplicating, or other reproduction of the contents hereof is prohibited without written consent from Kensington Technology Group. All rights reserved. 2/05

Kensington is a registered US trademark of ACCO World Corporation with issued registrations and pending applications in other countries throughout the world. Mac and Macintosh are registered trademarks of Apple Computer, Inc. Microsoft and Windows are registered trademarks of Microsoft, Corporation. All other registered and unregistered trademarks are the sole property of their respective owners.

901-1666-00