

# **Wireless Home Alarm System**

**(LED)**

**USER MANUAL**

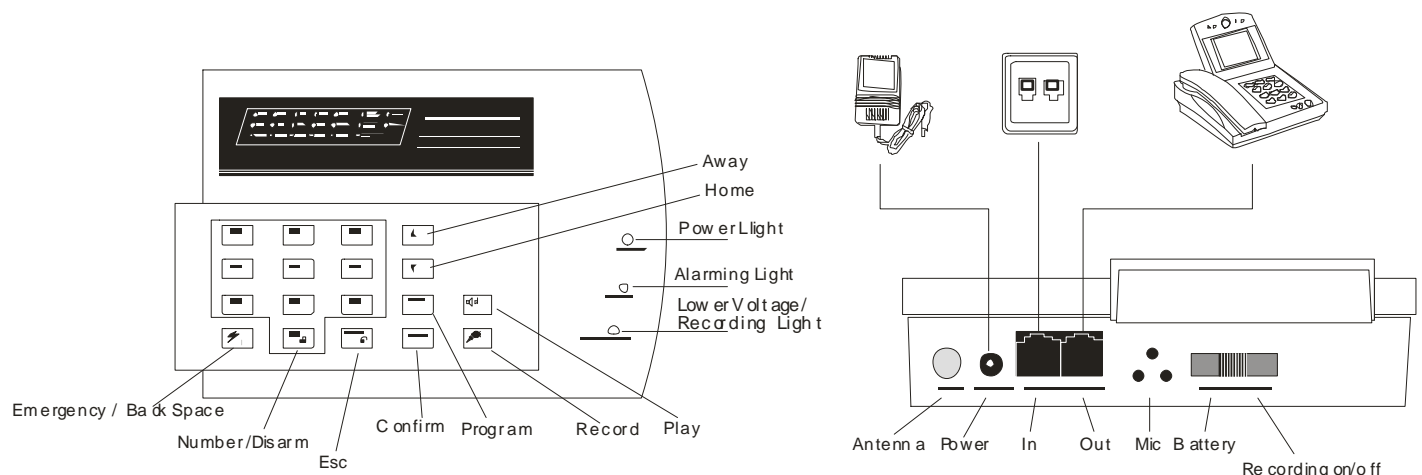
## Main Features

1

- 15 Wireless zones(Each zone supports up to 4 sensors)
- Can dial up to 6 phone numbers in sequence
- Arm/disarm the system by: Main Host(keypad),Wireless Keypad, Keychain Remotes, or even remotely by phone
- “One-key” arm/disarm by Main Host(keypad)
- Wireless or wired siren are optional for louder alarming sound
- Alarm Sounds if Phone Line is Cut, auto priority to occupy the telephone and monitoring function to hear what is happening.
- Remembers programming settings when power is disconnected.
- Available in both AC/DC with Low-voltage Indicators
- Built-In Rechargeable Backup Battery (Keypad)
- More functions can be realized with more optional accessories(Note: consultation in advance is necessary)

## Understanding of Alarm Host

2



### 2.1 Specifications

- Operating power: 9-15VDC
- Static current:  $\leq 60\text{mA}$
- Alarm current:  $\leq 380\text{mA}$
- Operating environment: Temperature:  $-10\text{--}50^{\circ}\text{C}$  Humidity:  $<80\%$
- Maximum available quantity of remote controllers: 10 PCS
- Maximum available quantity of wireless sensors: 60 PCS
- Dimensions:  $180 \times 120 \times 38$  (mm)

### 2.2 Type and definition of Defense Line

Type of Defense Line: 1<sup>st</sup> Defense Line, 2<sup>nd</sup> Defense Line and 24-hour Defense Line

1<sup>st</sup> Defense Line: Indicates the first detecting defense areas (such as doors, windows, etc.) thieves pass through, generally composed of wireless door magnet sensors and wireless curtain PIR sensors etc.;

2<sup>nd</sup> Defense Line: Indicates the second detecting defense areas (such as living room, aisles and bedrooms, etc.) thieves pass through, generally composed of the wireless wide-angle PIR sensors, etc.;

24-hour Defense Line: Indicates the detecting defense areas in 24-hour monitoring statue (such as emergency distress, medical rescue, gas leakage and fire alarm, etc.), generally composed of panic button, wireless gas sensors and wireless smoke sensors, etc.;

## 2.3 How to Program

### 【Function】→【Operation】→Operation Explanation

Notes: 1.No operation within 20 seconds after pressing any key, the alarm host will exit from the programming status.

2. Any operation is effective only after 【Start to program】, any pressing on ESC will lead to previous step;

3. The sound “Di Di---” from the alarm host indicates successful operation

The sound “Di Di” from the alarm host indicates failed operation


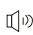
- : 【SET + Programming Password + ENT】→The programming password has 6 digits and the default one is 888888;
- 【Input Alarming Telephone Number】: 【XX+ENT + telephone number+ ENT】 → “XX”: Indicates group number of the telephone numbers, details is as below:
  - 01: Group 1 (Fixed to be VSH Protocol number for management center, not for personal numbers)
  - 02: Group 2 (Fixed to be CID Protocol number for management center, not for personal numbers)
  - 03: Group 3 (personal number)
  - 04: Group 4 (personal number)
  - 05: Group 5 (personal number)
  - 06: Group 6 (personal number)
- 【Delay Time to Arm】: 【XX+ENT】 → Setup of a time for you to leave after finishing arm operation  
“10”: 0 second; “15”: 15 seconds, the default is “10”.
- 【Delay Time to Alarm】: 【XX+ ENT】 → “20”: 0 second; “21”: 15 seconds, the default is “20”
- 【Emergency alarm voice】: 【XX+ENT】→“30”: Silent when alarm; “31”: Audible alarm, the default is “31”
- 【Alarm voice for 1<sup>st</sup> and 2<sup>nd</sup> defense line】: 【XX+ENT】 → “40”: Silent when alarm; “41”: Audible alarm, the default is “41”
- 【If upload arm and disarm to management center】: 【XX+ENT】 →“50”: Not upload; “51” upload, the default is “50”.
- 【Telephone Disconnection Alarm】: 【ENT + ENT】 →“60” Not alarm; “61”Alarm, the default is “61”.
- 【User Code】: 【80+ENT + XXXX + ENT】 → “XXXX”: Four digitals between 0000-9999 and the default is random.

**Note:** Press ESC to exit from the programming state after finish programming.

## 2.4 How to change programming password

【SET + 999999 + ENT + Six Digital New Programming Passwords + ENT + Six Digital New Programming Passwords + ENT】 → Press SET, then programming light on, enter “999999”, press ENT and input the six-digital new programming passwords ,press “ENT” and input the six-digital new programming password again, press “ENT” to complete the setup, programming light off. If any incorrect input, you have to restart from the very beginning.

## 2.5 Operation

- **Record:** Slide the switch on the alarm host side to “ON”, keep pressing  and speak close to the speaker of host, and then release, the voice recorded.
- **Play:** Slide the switch on the alarm host side to “DC”, keep pressing  and you will hear the previous record.
- **“One-key” Arm: By Remote controller:** Press the corresponding arm key and the alarm host will beep once to successfully complete the operation;

**By Keyboard on alarm host:** Press “▲” or “▼”, the alarm host will beep once to

successfully complete the operation;

- **Disarm: By Remote controller:** Press the disarm key and the alarm host will beep twice to successfully complete the operation;

**By Keyboard on alarm host: 【0 + Programming Password + ENT】** →The host will beep twice to successfully complete operation;

- **Emergency distress: By Remote controller:** Press Emergency key and the alarm host will alarm immediately;

**By Keyboard on alarm host:** press ⚡ and the alarm host will alarm immediately;

- **Telephone alarm:** After receiving the call, you will hear the recorded voice message immediately, it can be played for 30 seconds repeatedly; then follow the below instructions:

1. Input “8” to enter into the listening in state for 20 seconds automatically.
2. Input “#” to play the recorded voice message for one time automatically.
3. Input “\*”, the host will end the call and stop dialing any alarm telephone number.
4. Directly hang off the telephone, the host will end the call and automatically dial the next alarm telephone number.

- **Long-distance arm by phone:** 30 seconds after successfully dial the telephone number of host, enter the password of host after the beep----enter 1 after beep----the host will automatically hang up after beep to successfully complete the operation.

**Note: You can use phone to arm only when the arm mode is “Away”.**

**Long-distance disarm by phone:** 30 seconds after successfully dial the telephone number of host ,enter the password of host after the beep---- enter 0 after beep----the host will automatically hang up after beep to successfully complete the operation.

- **Alarm dialing mode:** After the host goes off, it starts to repeatedly dial the set telephone numbers for three times one by one from the first one. The answered number will not be dialed again.
- **Alarm priority:** If the telephone line is busy when the alarm host goes off , it automatically cuts off the line to resume to the available state to automatically dial the set alarm telephone numbers to convey the crime.
- **Telephone disconnection Alarm:** If already setup “disconnection alarm”, the telephone line is cut or comes off, the host will alert with 5 seconds alarm sound after the telephone line is cut off or disconnected. Then it will voice “Di Di” each 5 seconds and will resume to normal status till the telephone line is well connected.
- **“Away” mode:** In this state, after any detector in the 1st or 2nd defense line is triggered, the host will start the spot alarms immediately and meantime automatically dial the alarm telephones.
- **“Home” mode:** In this state, after any detector in the 1st defense line is triggered, the host will start the spot alarm immediately and meantime automatically dial the alarm telephones. It will not alarm after any detector in the 2<sup>nd</sup> defense line is triggered.

## Understand and Configure Wireless Accessories

3

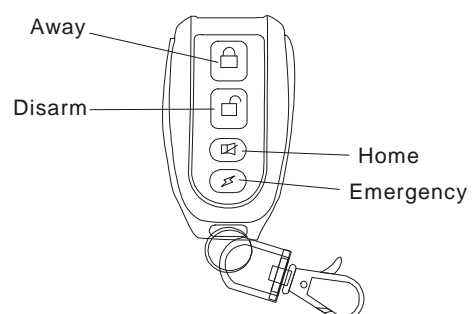
### Wireless Remote Controller

#### 1. Functions Features:

- 1.1 To control the alarm host to arm and disarm.
- 1.2 With the emergency key for urgent help.

#### 2. Specifications:

- 2.1. Operating power: 27A 12V alkaline battery
- 2.2. Emitting distance: ≥100m (in open area)
- 2.3. Service life: ≤2 years



### **3. Installation and Usage:**

- 3.1. For users to take along.
- 3.2. Generally, press the “Away” key to arm before leaving home; and press the “Home” key to disarm;
- 3.3. Please replace the batteries after one year usage and a shorter control distance.

### **4. Instruction for configuration**

#### **A. Add**

- 4.1 **【Start to program】** (Please refer to **【Start to Program】** in Section VI. )
- 4.2 **【Wireless configuration】** : **【70 + ENT+ 00 + ENT】** (At this time, “Learn” light keep on)
- 4.3 Press any key on remote controller twice successively, if you hear “Di----” form the alarm host and see the “Learn” light flashes five times and off, it indicates successfully added.

#### **B. Cancel**

- 4.1 **【Start to program】** (Please refer to **【Start to Program】** in Section VI. )
- 4.2 **【Wireless configuration】** : **【71 + ENT+ 00 + ENT】** if you hear “Di Di---” form the alarm host and see the “Learn” light flashes two times and off, it indicates successfully cancelled.

Notes: 1. You can only add 1 remote controller each time, totally 8 available to be added.  
2. All the remote controllers are cancelled after your cancelling operation. You have to do the adding operation if you need one or more.

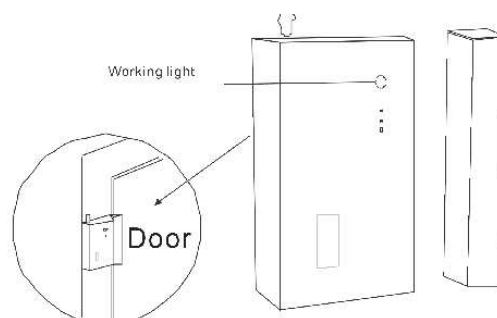
## **Wireless Door Magnet**

### **1. Functions Features:**

- 1.1. Mainly detect the open and closed states of doors or windows, generally set as 1<sup>st</sup> Defense Line.
- 1.2. If any door or window is opened, it will transmit the alarm signal to the alarm host.

### **2. Specifications:**

- 2.1. Operating power: 23A 12V alkaline battery
- 2.2 Emitting distance: ≥150m (in open area)
- 2.3 Service life: ≤2 years
- 2.4 Alarm Distance: <4cm



### **3. Installation and Usage**

- 3.1 Fix the part of magnet onto the door frame in a position of 1.6m above the ground to prevent any children from bumping onto it;
- 3.2. Fix the part of emitting onto the door frame, make sure to keep the part of magnet and part of emitting in parallel, the space between the two parts shall be less than 10mm;
- 3.3 Upon the working light flashes frequently in red, please replace the batteries.

### **4. Instruction for configuration**

#### **A. Add**

- 4.1 **【Start to program】** (Please refer to **【Start to Program】** in Section VI. )
- 4.2 **【Wireless configuration】** : **【70 + ENT+ XX + ENT】** (At this time, “Learn” light keep on)  
Notes: “XX” indicates group number of defense zone, including 01~06.
- 4.3 Trigger the door magnet twice successively, if you hear “Di----” form the alarm host and see the “Learn” light flashes five times and off, it indicates successfully added.

#### **B. Cancel**

- 4.1 **【Start to program】** (Please refer to **【Start to Program】** in Section VI. )
- 4.2 **【Wireless configuration】** : **【71 + ENT+ XX + ENT】** if you hear “Di Di---” form the alarm host and see the “Learn” light flashes two times and off, it indicates successfully cancelled.

Notes: 1. You can only add 1 wireless door magnet each time.

2. All the wireless door magnet in this group are cancelled after your cancelling operation for one group . You have to do the adding operation if you need one or more.

3. Each group is available to add 4 wireless door magnets.

## Wireless Wide-Angle PIR Sensor

### 1. Functions Features:

- 1.1. Mainly monitor and control indoor stereoscopic space, generally set as 2<sup>nd</sup> Defense Line.
- 1.2. When human body enters into the detecting area, the sensor will transmit the alarm signals to the alarm host.

### 2. Specifications:

- 2.1. Operating power: 9V alkaline battery
- 2.2. Emitting distance: ≥150m (in open area)
- 2.3. Service life: ≤2 years
- 2.4. Detecting distance: 110°10×10m

### 3. Installation and Usage

- 3.1. Fix the bracket on suitable wall surface or in wall corner at a distance of 2~2.4m above the ground;
- 3.2. Open the sensor shell to connect the batteries well and adjust jumper line (short circuit "5S": The sensor will detect once every 5 seconds; short circuit "5MIN": The sensor will detect once every 5 minutes; suggestion: short circuit "5S" for testing and "5MIN" for normal use;
- 3.3. Fix the sensor onto the bracket;
- 3.4. Adjust the sensor to a proper angle and then slide the power switch on the side to "ON", and it will enter into the normal working state after 30 seconds;
- 3.5. Upon the working light flashes frequently in green, please replace the batteries.

### 4. Instruction for configuration

#### A. Add

4.1 【Start to program】 (Please refer to 【Start to Program】 in Section VI. )

4.2 【Wireless configuration】 : 【70 + ENT+ XX + ENT】 (At this time, "Learn" light keep on)

Notes: "XX" indicates group number of defense zone, including 11~15.

4.3 Press the "Learning Emitting Switch" twice successively to trigger PIR sensor, if you hear "Di----" form the alarm host and see the "Learn" light flashes five times and off, it indicates successfully added.

#### B. Cancel

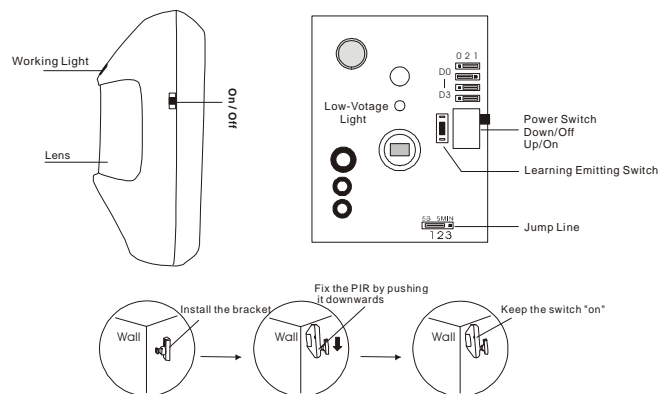
4.1 【Start to program】 (Please refer to 【Start to Program】 in Section VI. )

4.2 【Wireless configuration】 : 【71 + ENT+ XX + ENT】 if you hear "Di Di---" form the alarm host and see the "Learn" light flashes two times and off, it indicates successfully cancelled.

Notes: 1. You can only add 1 wireless wide-angle PIR sensor each time.

2. All the wireless wide-angle PIR sensor in this group are cancelled after your cancelling operation for one group . You have to do the adding operation if you need one or more.

3. Each group is available to add 4 wireless wide-angle PIR sensors.



## Wireless Curtain PIR Sensor

### 1. Functions Features:

- 1.1. Mainly monitor and control indoor stereoscopic space, generally set as

## 2<sup>nd</sup> Defense Line.

- 1.2. When human body enters into the detecting area, the sensor will transmit the alarm signals to the alarm host.

### 2. Specifications:

- 2.1. Operating power: 9V alkaline battery
- 2.2. Emitting distance:  $\geq 150\text{m}$  (in open area)
- 2.3. Service life:  $\leq 2$  years
- 2.4. Detecting distance:  $100^\circ 8\text{m}$

### 3. Installation and Usage

(As same as the way for Wireless wide-angle PIR sensor)

### 4. Instruction for configuration

#### A. Add

- 4.1 【Start to program】 (Please refer to 【Start to Program】 in Section VI. )

- 4.2 【Wireless configuration】 : 【70 + ENT+ XX + ENT】 (At this time, “Learn” light keep on)

Notes: “XX” indicates group number of defense zone, including 06~10.

- 4.3 Press the “Learning Emitting Switch” twice successively to trigger PIR sensor, if you hear “Di----” form the alarm host and see the “Learn” light flashes five times and off, it indicates successfully added.

#### B. Cancel

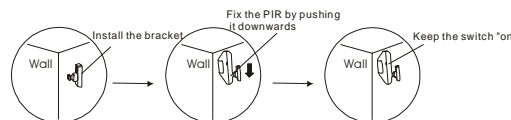
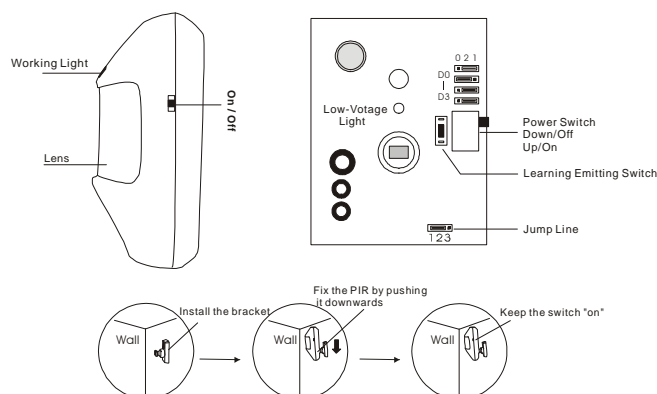
- 4.1 【Start to program】 (Please refer to 【Start to Program】 in Section VI. )

- 4.2 【Wireless configuration】 : 【71 + ENT+ XX + ENT】 if you hear “Di Di---” form the alarm host and see the “Learn” light flashes two times and off, it indicates successfully cancelled.

Notes: 1. You can only add 1 wireless curtain PIR sensor each time.

2. All the wireless curtain PIR sensors in this group are cancelled after your cancelling operation for one group. You have to do the adding operation if you need one or more.

3. Each group is available to add 4 wireless curtain PIR sensors.



## Wireless Indoor Siren

### 1. Functions Features:

- 1.1 Work with alarm host, wireless receiving alarm signals, spot alarming with sound and flash
- 1.2 With power plug, usually for indoor use.

### 2. Specifications:

- 2.1 Operating Power: 100—240VAC
- 2.2 Receiving Distance:  $\geq 100\text{ M}$  (In open area)

### 3. Installation and Usage:

- 3.1 Plug the wireless siren into suitable indoor power socket
- 3.2 Suggestion: Generally around 1.8M from the ground

### 4. Instruction for configuration

#### A. Add

- 4.1 After connecting to the power, press the “Learning” switch on the side of the siren, siren lights on

- 4.2 Press “⚡”key on the alarm host, then disarm by keypad on the alarm host (press “0”, input programming password, press “ENT”, the sound of “Di Di” from the alarm host indicates successful disarm operation) after five seconds.



4.3 Light on the siren flashes 5 times and then off indicates successful adding.

**B. Cancel**

4.1 After connecting to the power, keep pressing the “Learning” switch on the side of the siren for 5 seconds and release, light on the siren flashes 2 times and then off indicates successful cancelling.

**Notes:** 1. You can only add 1 wireless siren each time.

2. When configure the wireless siren, you can only operation on the keypad of the alarm host.

3. Multi wireless sirens are available to be added for each alarm host.

## **GSM Alarm Auto Dialer**

### **1. Functions Features:**

1.1 Nice and exquisite.

1.2 Microcomputer intelligence control, high quality and stable performance.

1.3 Compatible with any telephone alarm system

1.4 Applicable to houses, shops, mansions, museums, warehouses etc.

1.5 Suitable for the user whose family has no landline.

### **2. Specifications:**

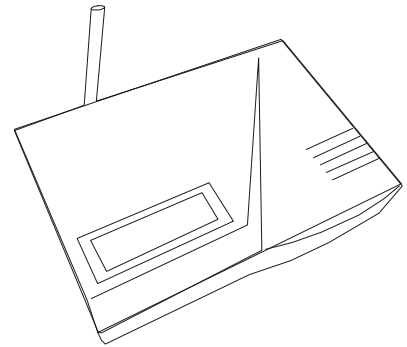
1. Operating Power: 110~240VAC, 50Hz

2. Telephone Line Modem: RJ11

3. Antenna Frequency: 900Hz / 1800Hz

4. Applicable network: GSM

5. Temperature Range: -25°C--70°C



### **3. Installation and Usage**

1. Connect the “IN” of telephone line port on the alarm host and any port on the GSM auto dialer

2. Open the cover of SIM card on the back of the auto dialer

3. Plug the SIM card correctly and then close the cover

4. Connect to the power and well adjust the GSM network signal.

#### **Notes:**

1. Test by mobile phone and make sure good GSM signal before installation. Make sure no user password for the SIM card and enough balance in it.

2. Please replace the power supply upon when necessary.

3. Suggested to not install this system in area of no GSM signal or weak signal.

4. Suggested to not set a user password of the SIM card, otherwise it will affect the SGM network.

5. Make sure to finish wire connecting and SIM card plugging before connecting to the power.

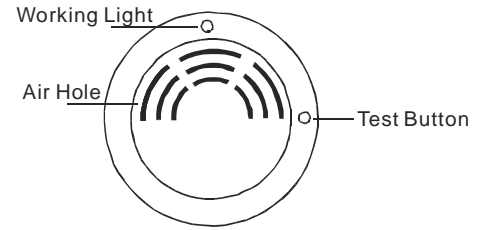
6. Never plug SIM card with power connecting!



## Wireless Smoke Alarm

### 1. Functions Features:

- 1.1. Mainly monitor and control indoor fire risks, generally set as 2<sup>nd</sup> Defense Line.
- 1.2. Replace the batteries for every 1 or 2 year.
- 1.3 Usually installed on the ceilings of living room and aisles.



### 2. Specifications:

- 2.1. Operating power: 9V alkaline battery
- 2.2. Emitting distance:  $\geq 100\text{m}$  (in open area)
- 2.3. Service life:  $\leq 2$  years
- 2.4. Monitoring range:  $20\text{m}^2$

### 3. Instruction for configuration

#### A. Add

- 3.1 【Start to program】 (Please refer to 【Start to Program】 in Section VI. )
- 3.2 【Wireless configuration】 : 【70 + ENT+ XX + ENT】 (At this time, “Learn” light keep on)  
Notes: “XX” indicates group number of defense zone, including 01~05.
- 3.3 Press the “Test button” twice successively to trigger the smoke sensor, if you hear “Di----” form the alarm host and see the “Learn” light flashes five times and off, it indicates successfully added.

#### B. Cancel

- 3.1 【Start to program】 (Please refer to 【Start to Program】 in Section VI. )
- 3.2 【Wireless configuration】 : 【71 + ENT+ XX + ENT】 if you hear “Di Di---” form the alarm host and see the “Learn” light flashes two times and off, it indicates successfully cancelled.

Notes: 1. You can only add 1 wireless smoke alarm each time.

2. All the wireless smoke alarm in this group are cancelled after your cancelling operation for one group . You have to do the adding operation if you need one or more.

3. Each group is available to add 4 wireless smoke alarms.

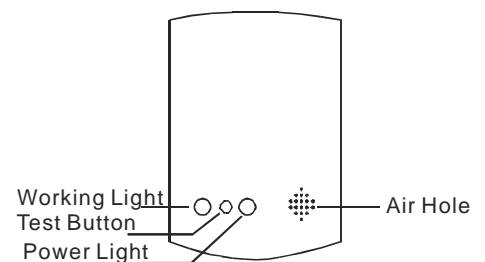
## Wireless Gas Alarm

### 1. Functions Features:

- 1.1. Mainly monitor and control indoor gas leak, generally set as 2<sup>nd</sup> Defense Line.
- 1.2. 220VAC power
- 1.3 Usually installed in kitchen

### 2. Specifications:

- 2.1. Operating power: 220VAC
- 2.2. Emitting distance:  $\geq 100\text{m}$  (in open area)
- 2.3. Detecting distance:  $100^\circ 8\text{m}$
- 2.4. Inductive gas: natural gas: 0.1%-0.5%  
Liquefied petroleum gas (LPG): 0.1%-0.3%



### 3. Installation and Usage:

- 3.1. Fix the gas alarm onto proper wall surface inside the kitchen.
- 3.2. Connect the alarm to the power and it will be ready to detect after two minutes.

### 4. Instruction for configuration

### A. Add

4.1 【Start to program】 (Please refer to 【Start to Program】 in Section VI. )

4.2 【Wireless configuration】 : 【70 + ENT+ XX + ENT】 (At this time, “Learn” light keep on)

Notes: “XX” indicates group number of defense zone, including 01~05.

4.3 Trigger the gas sensor, if you hear “Di----” form the alarm host and see the “Learn” light flashes five times and off, it indicates successfully added.

### B. Cancel

4.1 【Start to program】 (Please refer to 【Start to Program】 in Section VI. )

4.2 【Wireless configuration】 : 【71 + ENT+ XX + ENT】 if you hear “Di Di---” form the alarm host and see the “Learn” light flashes two times and off, it indicates successfully cancelled.

Notes: 1. You can only add 1 gas alarm each time.

2. All the wireless gas alarm in this group are cancelled after your cancelling operation for one group .

You have to do the adding operation if you need one or more.

3. Each group is available to add 4 wireless gas alarms.

## Wireless Keypad

### 1. Function Features:

1.1 LCD Screen displays Date. Day of the week, Time, and current Armed Status

1.2 Micro-computer controlling, steady performance

1.3 Supported languages: Simple Chinese\ Traditional Chinese\ English\ German\ French\ Russian and more

1.4 Work with wireless alarm host, with function of armed home\armed away, disarm, emergency

1.5 Contains 3 codes: master

code\programming code\

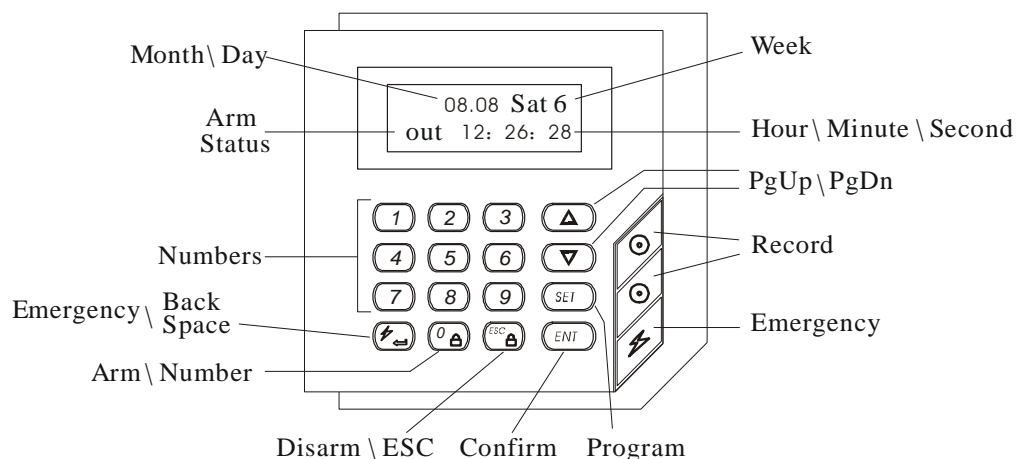
user's code

1.6 Remembers programming settings when power is disconnected.

1.7 Code recorded and resume function

1.8 Two power ports available, convenient using and easy installation

1.9 “One-key” arm funtion



### 2. Specification:

2.1 Power supply: 12VDC

2.2 Maximum current: ≤50mA

2.3 Working environment: temperature: -10~50℃ humidity: ≤97%

2.4 Product dimension: 125 × 125 × 25 (mm)

### 3. code type

Code type: master code(999999), programming code, user's code

Master code: 999999, 6 digits, can revise programming code and user's code;

Programming code: 6 digits, set time\date\wireless code


User's code: 6 digits, control arming\disarming;


### 4. Program

【operation】 → 【instruction】 → operation

- Note: 1、LCD screen will exit programming if without any operation within 30 seconds;  
 2、It will be back to the previous step if press “ESC”.  
 3、Three times of wrong programming code input will lead the host to the original status.  
 4、If putting wrong user’s code, the host will sound “DI—”and resume to the original status;

【program】: 【SET + programming code + ENT】 → programming code is 6 digits, the default before shipment is “888888”;

【set current time】: 【ENT + press“”to clear old record + X X X X X X + ENT】 → “X X X X X X”: 6 digits, and “hour\minute\second”, each takes two digits space

【set current date】: 【ENT + press“”to clear old record + X X X X X X X + ENT】 → “X X X X X X X”: 7 digits, “year\month\date\week”, first three setting take 2 digits space for each, and 1 digits space for week;

【set remote keypad code】: 【ENT + X X X X X X X + ENT】 → “X X X X X X X”: 8 digits, from “A0-A7”, can replaced by“2”、“1”、“0”; “2”means low level, “1”means high level, “0”means empty

Notes: You can press “ESC” to exit setting when you finish above !

## 5、Set programming code



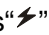
【SET + 999999 + ENT +press“▲▼”button + ENT + enter old 6 digits master code + ENT + enter new 6 digits programming code + ENT + reenter new 6 digits programming code + ENT】 →press“SET”and then enter“999999”, press“ENT”and then press“▲▼”page up\down to choose “revise master code”and press“ENT”, and re-enter new 6 digits programming code, and press“ENT”again. (The default before shipment is 888888)

## 6、Set user’s code

【SET + 999999 + ENT +press“▲▼”button + ENT + enter programming code + ENT + 6 digits user’s code + ENT + re-enter user’s code + ENT】 →press“SET”and programming lights would be on, enter“999999”, press“ENT”and repress“▲▼”page up/down to choose “revise user’s code”and press“ENT”, reenter new programming code, press“ENT”and then enter 6 digits user’s code, and press“ENT”.

**Notes: user’s code can’t be same as master code of 999999 and programming code!**

## 7、Operation

- 1) Use together with wireless alarm host.: 1、input correct and complete wireless code;  
 2、let wireless alarm host under learning status;  
 3、two times pressing “emergency” will help study to wireless alarm host;
- 2) arming: 【press“”arming button + input 6 digits user’s code + ENT +press“▲▼”button + ENT】 , and keypad will sound“di”, and also you will hear the host sound“bi”,it means arming successfully;  
 Notes: if you didn’t notice that “di” sound from alarm host, it means failed in arming, and it need to press“arming”again.
- 3) disarming: 【press“”disarming button+ input 6 digits user’s code + ENT + ENT】 , keypad will sound “di、di”two times, also you will hear the host sound “bi、bi”two times, it means disarming successfully;  
 Notes: if you didn’t hear the host sound“bi、bi”two times, it means failed in disarming, and you need to press“disarming”again.
- 4) emergency: press“”button, and host will sound out alarming immediately;

## 3. Instruction for configuration

### A. Add

3.1 【Start to program】 (Please refer to 【Start to Program】 in Section VI. )

3.2 【Wireless configuration】 : 【70 + ENT+ XX + ENT】 (At this time, “Learn” light keep on)

Notes: "XX" indicates group number of defense zone, including 01~05.

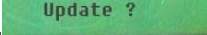

3.3 Press the arm key or emergency key on the wireless keypad twice successively, if you hear "Di----" form the alarm host and see the "Learn" light flashes five times and off, it indicates successfully added.

#### B. Cancel

3.1 【Start to program】 (Please refer to 【Start to Program】 in Section VI. )

3.2 【Wireless configuration】 : 【71 + ENT+ XX + ENT】 if you hear "Di Di---" form the alarm host and see the "Learn" light flashes two times and off, it indicates successfully cancelled.

#### Notes:

1. If LCD displays "YY Exists Update?" (serial no. of the wireless keypad), e.g. : ① Press ENT and LCD will display , it indicates a successful configuration ② Press ESC to exit from the operation, it will lead to a failed configuration
2. You can only add 1 wireless keypad each time, totally 8 available to be added.
3. Each serial number is available to study 1 wireless keypad, the latter configured wireless keypad will work and the former one will not work.

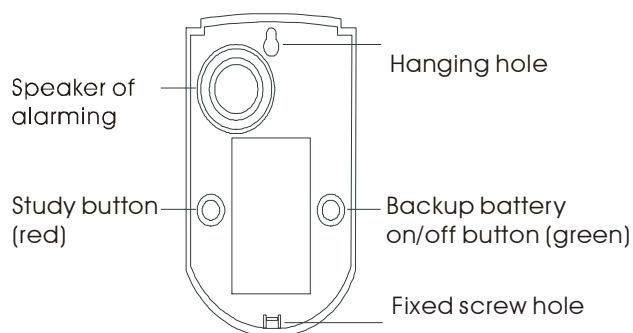
### Wireless Outdoor Siren

#### 1. Function Features:

- 1.1 Nice, exquisite and waterproof.
- 1.2 Micro-computer controlling, steady performance and high-class quality.
- 1.3 Study to at most 10 pieced of wireless alarm host.
- 1.4 With inbuilt charging circuit and back-up accumulators, automatic AC power and DC power transformation.
- 1.5 Low standby power consumption, self-inspection of low battery voltage, automatic charging.
- 1.6 Wall-hanging installation

#### 2. Specifications:

- 2.1 Operating power: 110~240VAC, 50Hz
- 2.2 Static power consumption: ≤40 mA
- 2.3 Working power consumption: ≤450 mA
- 2.4 The maximum alarm sound with flash: 3 Minutes
- 2.5 Receiving distance: ≥150M (in open area)
- 2.6 Alarming volume: ≥105db



#### 3. Installation and usage

- 3.1 Press the green power switch on the back after connecting to the AC power
- 3.2 Study the siren to the alarm host according to the instruction below.
- 3.3 Unplug from the AC power after finish studying, fix it in the proper outdoor place with hanging hook and then plug to the AC power.
- 3.4 The max. time for alarming sound with flash is 3 minutes, it will stop automatically after the alarm host is disarmed.
- 3.5 When the back-up battery has a lower voltage than 10VDC, the charging indicator turns on, the back-up accumulators will be charged automatically, the approximate charging time is 20 hours. When the charging indicator off, it means it has finished charging.

#### 4. Activate and deactivate sensors

##### A. Activate

- 4.1. (Siren) Connect the siren to AC power -----press red studying switch on the back-----siren lights on

4.2 (Alarm Host) Press emergency key on the alarm host to let the alarm host goes off-----disarm by keys on alarm host ----you will hear “Di Di” from the alarm host after 5 seconds.

4.3 One siren can be studied to at most 10 wireless alarm hosts, multi wireless sirens are available to be added for each alarm host.

#### B. Deactivate

4.1 Keep pressing the red button for 10 seconds and a successful deactivation (for all) will be followed by a flash of the alarming light.

**Note: 2.** The default (set before shipment) setup of the alarm host.

Defense Zone Code	Defense Zone Type	Bypass Zone ?	Delay Time to Alarm ?	Compatible Accessories	Remark
00	—	No	No	Wireless Remote Controller, Wireless Remote-Control Keypad, etc.	At most 8 PCS can be configured.
1 ~ 5	24-hour Defense Line	No	No	Wireless Smoke Alarm, Wireless Gas Alarm, etc.	Each defense zone is available to add 4 wireless sensors.
6 ~ 10	1 <sup>st</sup> Defense Line	No	No	Wireless Door Magnet, Wireless Curtain PIR Sensor, etc.	
11 ~ 15	2 <sup>nd</sup> Defense Line	No	No	Wireless Wide-Angle PIR Sensor, etc.	

**2.** The default (set before shipment) setup of the accessories to the alarm system.

Wireless Sensor	Remote Control	Wireless Door Magnet	Wireless Wide-Angle PIR Sensor	Wireless Curtain PIR Sensor	Wireless Gas Alarm	Wireless Smoke Alarm
The default (set before shipment) Defense Zone Code	00	11	21	12	02	03

## Common Problems and Solutions 4

Symptoms of Faults	Possible Cause	Solution
The alarm host goes off immediately after connected to the power	The telephone incoming line has not been connected or not well connected.	To connect the telephone incoming line well
The alarm host can't automatically record or can't record completely	The record switch is not on; The Record key is being pressed while recording	Slide the record switch to “ON”; Keep pressing the RECORD key while recording.

Repeatedly receiving the alarm telephone	Fail to operate according to the operation instruction of the telephone alarm	Follow the below instructions after answering the alarm phone calls and hearing the recorded message: (See 2.5 Operation --- <b>Telephone alarm</b> )
The host does not alarm after the detector is triggered in arm state	1. Caused by the functions of arm mode (Armed Away and Armed Home); 2. Have already setup time for Entry Delay or Exit Delay	1. "Armed Away" mode: the alarm goes off when any sensor is triggered; 2. "Armed Home" mode: the alarm goes off when any sensor in 1 <sup>st</sup> Defense Line is triggered and it won't alarm when any sensor in 2 <sup>st</sup> Defense Line
The PIR sensor doesn't work	Not connected to the power Port of the detector is in the power-down mode	1. Open the sensor shells to install the batteries well and slide the power switch to "On"; 2. "5S": detect once every 5 seconds; "5MIN": detect once every 5 minutes;
The detecting distance of PIR sensor gets shorter	The ambient temperature in the detecting area is too high.	When the ambient temperature in the detecting area exceeds the human body temperature, the detecting distance will get shorter, it's normal.
The host does not alarm after the new added wireless detector is triggered.	"Failed to follow the operation instruction of "Adding and deleting sensors" to add the new wireless sensor	Follow the operation instruction of "How to program" to activate the new wireless sensor
The PIR sensor flashes frequently in green.	Batteries are running out.	Replace with new batteries of the same specification.
The door magnetic sensor indicator flashes frequently in green after alarming.	Batteries are running out.	Replace with new batteries in the same specification.
The distance of the remote controller gets shorter.	Batteries are running out.	Replace with new batteries in the same specification.

## Daily Maintenance and Care 5

This alarm is the hi-tech product with the outstanding design and sophisticated technique, and shall be used carefully. To make the alarm to operate for a long term stably and to prolong the service life, it is recommended that:

1. Try to put the alarm host in the dry and well-ventilated places;
2. Do not put the host and any wireless detectors in too cold, too hot or dusty places to prevent it from curtailing the service lives of electric parts and preventing the plastic shell from distorting and accelerating to age;
3. Do not put the host and any wireless detectors in low and too exposed places to prevent the children from touching them or the thieves from finding them;
4. Regular testing is necessary for finding and resolving problems in time.
5. Regularly check the batteries in all wireless sensors and replace the running out batteries to ensure the normal operation of them;
6. You'd better keep the power of the alarm host and all wireless accessories off while a long-time vacancy of

the system.

## **After-sales Service    6**

1. This alarm system will be warranted for one year commencing from the purchasing date; and after the expiration of the warranty period, any reparation shall be charged with the costs of production;
2. Any losses incurred from the force majeure such as the abnormal use, human factors and visitation of providence, etc. are beyond the warranty ;