

CONEX-PP

*Intelligent
Stepper Motor Stages*



Newport®

Experience | Solutions

Controller GUI Manual

Version 1.0.x

Precision Motion – **Guaranteed™**

Preface

Confidentiality & Proprietary Rights

Reservation of Title

The Newport Programs and all materials furnished or produced in connection with them ("Related Materials") contain trade secrets of Newport and are for use only in the manner expressly permitted. Newport claims and reserves all rights and benefits afforded under law in the Programs provided by Newport Corporation.

Newport shall retain full ownership of Intellectual Property Rights in and to all development, process, align or assembly technologies developed and other derivative work that may be developed by Newport. Customer shall not challenge, or cause any third party to challenge, the rights of Newport.

Preservation of Secrecy and Confidentiality and Restrictions to Access

Customer shall protect the Newport Programs and Related Materials as trade secrets of Newport, and shall devote its best efforts to ensure that all its personnel protect the Newport Programs as trade secrets of Newport Corporation. Customer shall not at any time disclose Newport's trade secrets to any other person, firm, organization, or employee that does not need (consistent with Customer's right of use hereunder) to obtain access to the Newport Programs and Related Materials. These restrictions shall not apply to information (1) generally known to the public or obtainable from public sources; (2) readily apparent from the keyboard operations, visual display, or output reports of the Programs; (3) previously in the possession of Customer or subsequently developed or acquired without reliance on the Newport Programs; or (4) approved by Newport for release without restriction.

©2015 Newport Corporation
1791 Deere Ave.
Irvine, CA 92606, USA
(949) 863-3144

Table of Contents

Preface	ii
EC Declaration of Conformity	v
<hr/>	
1.0 Introduction	1
1.1 Purpose	1
1.2 Overview	1
1.3 Controller Specifications	1
1.4 Controller State Diagram	2
<hr/>	
2.0 Getting Started.....	3
2.1 Overview and Setup	3
2.1.1 Components	3
2.1.2 Electrical Installation	4
2.2 First Connection	5
2.2.1 CONEX-PP Series USB Driver Installation on Windows 7	5
2.3 USB Driver Installation Verification	6
2.4 Discover Instruments	7
<hr/>	
3.0 User Interface.....	8
3.1 Configuration	8
3.2 Main	10
3.3 Parameters	12
3.4 Address	13
3.4.1 Controller pool setting	14
3.4.2 Controller address setting	16
3.4.3 Daisy-chaining	17
3.5 Diagnostics	18
3.6 About	19
<hr/>	
Service Form	21

EC Declaration of Conformity

CONEX-PP Series NewStep Intelligent Stepper Motor Stages



EC Declaration of Conformity

following Annex II-1A
of Directive 2006/42/EC on machinery

The manufacturer:

MICRO-CONTROLE Spectra-Physics,
9, rue du bois sauvage
F-91055 Evry FRANCE

Hereby declares that the machinery:

Description: " CONEX-PP "
Function: NewStep Intelligent Stepper Motor Stages
Models: CONEX-NSA12, CONEX-NSA12V6 et CONEX-NSR1

- the technical file of which was compiled by:
Mr Dominique DEVIDAL, Quality Director,
MICRO-CONTROLE Spectra-Physics, Zone Industrielle - B.P.29
F-45340 Beaune La Rolande France
- complies with all the relevant provisions of the Directive 2006/42/EC on machinery.
- complies with all the relevant provisions of the Directive 2014/30/EU relating to electro-magnetic compatibility.
- was designed and built in accordance with the following harmonised standards:
NF EN 61326-1:2013 « Electrical equipment for measurement, control and laboratory use – EMC requirements – Part 1: General requirements »
NF EN 55011:2010/A1:2011 Class A
- was designed and built in accordance with the following other standards:
NF EN 61000-4-2
NF EN 61000-4-3
NF EN 61000-4-4
NF EN 61000-4-6

ORIGINAL DECLARATION

Done in Beaune La Rolande on 26 June 2015
Dominique DEVIDAL
Quality Director

DC1-EN rev:A

CONEX-PP

Intelligent Stepper Motor Stages

1.0 Introduction

1.1 Purpose

The purpose of this document is to provide instructions on how to use the CONEX-PP controller series GUI.

1.2 Overview

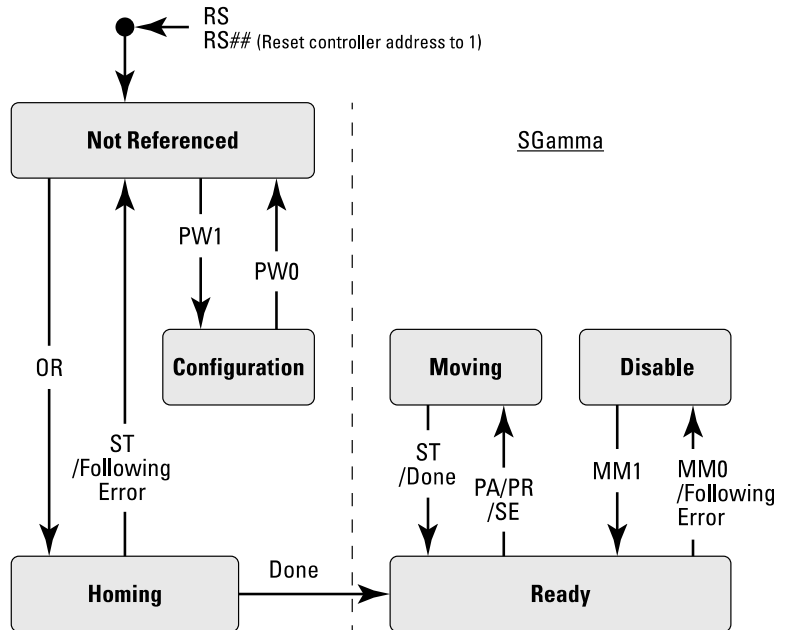
The CONEX-PP series GUI is a graphical user interface (GUI) which allows the user to interact with the controller that is integrated with intelligent stepper motor stages. The user can initiate moves, change the state of the controller, adjust configuration parameters, etc. Communication with the Intelligent Stepper Motor Stages is achieved via an RS-422 serial link and a USB to RS422 adaptor. The provided GUI requires USB communication interface, based on Windows™ operating system. Advanced programming is simplified by an ASCII command interface and a set of two letter mnemonic commands.

1.3 Controller Specifications

Description	Single-axis motion controller and driver for Intelligent stepper motors
Control capability	Stepper motors, open loop
Motor Output Power	24 VDC peak, 2.5 A peak PWM amplifier
Control Loop	- PI control of motor phase current with programmable idle state - 2kHz servo rate - Backlash compensation
Motion	Point-to-point motion with S-gamma profile and jerk time control
Computer Interface	USB +5V (USB): <0.5 A, Windows Compatible
Programming	- Natural user defined units - 40+ intuitive, 2-letter ASCII commands - Command set includes: software limits, user units, synchronized motion start, stop all, ...
Communication rate	115,200 baud (serial link over USB)
Safety Feature	- End of range checks - Power limit checks - Watchdog timer
Power Requirements	+24 V (FC-PS40): <1.67 A
Controller Dimensions	4.33" x 2.06" x 0.98" (110 x 52.2 x 25 mm)
Cable Length [ft. (m)]	9.8 (3)

1.4 Controller State Diagram

The CONEX-PP controller is defined by the following state diagram.



Actions in each state when End of Runs is encountered

NOT REFERENCED: No action.

CONFIGURATION: No action.

HOMING: Only check at end of HOMING and then change to NOT REFERENCED state.

MOVING: Abort motion and then change to NOT REFERENCED state.

READY: Change to NOT REFERENCED state.

DISABLE: Change to NOT REFERENCED state.

2.0 Getting Started

2.1 Overview and Setup

2.1.1 Components

USB-RS422-1.8 USB Adaptor



FC-PS40 Power Supply

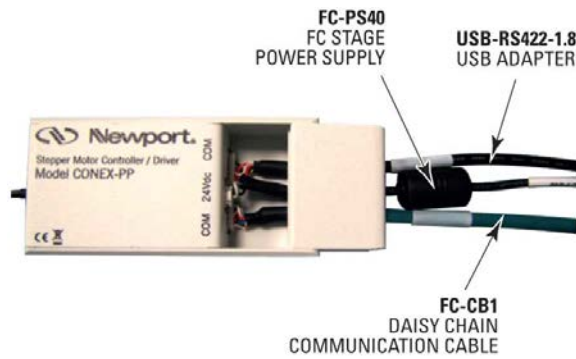


CONEX-PP Series Intelligent Stepper Motor Stages



2.1.2 Electrical Installation

1. Connect the USB-RS422-1.8 adaptor cable to the CONEX-PP series stage.
2. Connect the FC-PS40 power supply to the CONEX-PP series stage.



3. Connect the USB cable to an available USB port of the PC



4. Connect the power cable to an electrical outlet.

2.2 First Connection

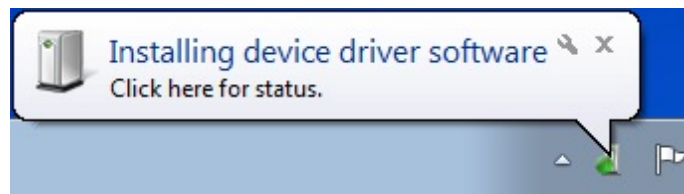


CAUTION

BEFORE ANY INSTALLATION, CONTACT YOUR I.T. ADMINISTRATOR TO VERIFY THAT YOU HAVE THE APPROPRIATE RIGHTS.

2.2.1 CONEX-PP Series USB Driver Installation on Windows 7

1. Connect the CONEX-PP controller to a USB port with the USB cable.
2. Detection of this new connected device (the first time) is signaled by a message in the bottom-right of the screen.

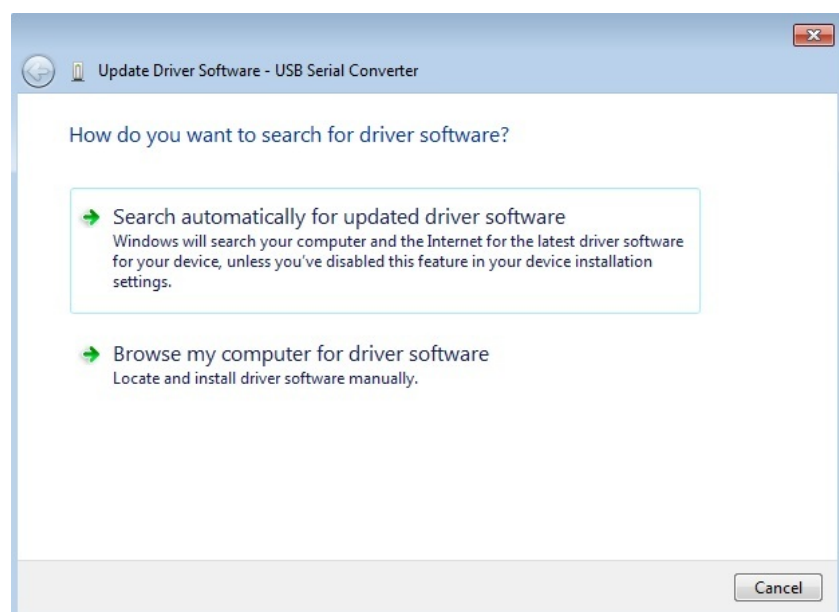


3. For Windows 7 64 bit, the USB driver installation is completed when the message disappears.
4. For Windows 7 32 bits, right click on the new detected device and select “Update driver”.

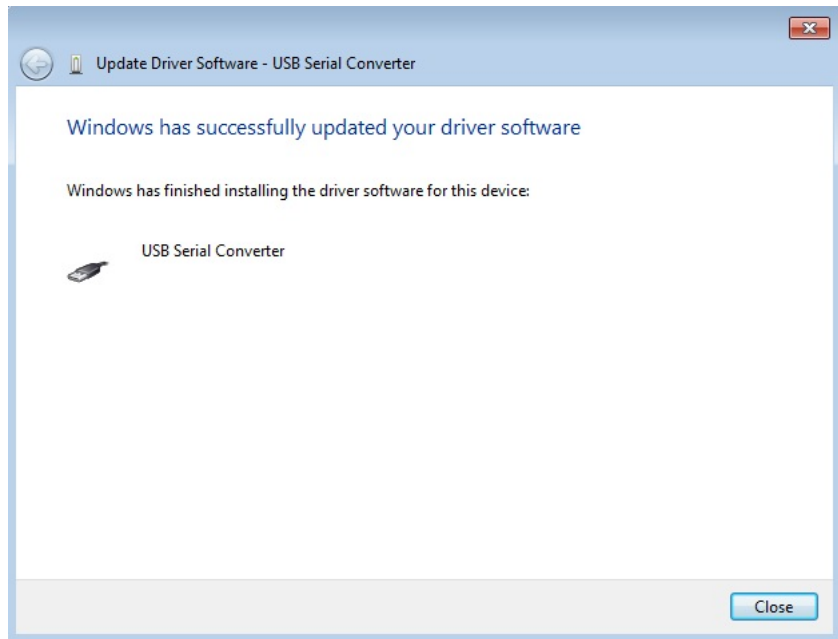
NOTE

Automatic driver installation requires internet connection.

Click “Search automatically for updated driver software”.



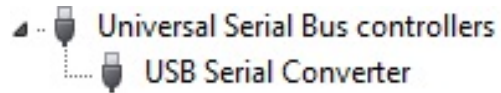
5. The following window will pop up after driver installation is completed.



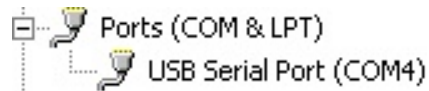
2.3 USB Driver Installation Verification

Open the “Device Manager” and select the “Device” tab to check your configuration. In the display menu, select “View devices by type”.

Expand “USB Bus controllers” line and check the new line USB Serial Converter:



Expand “Ports (COM and LPT)” line and check the new line USB Serial Port (COMx):

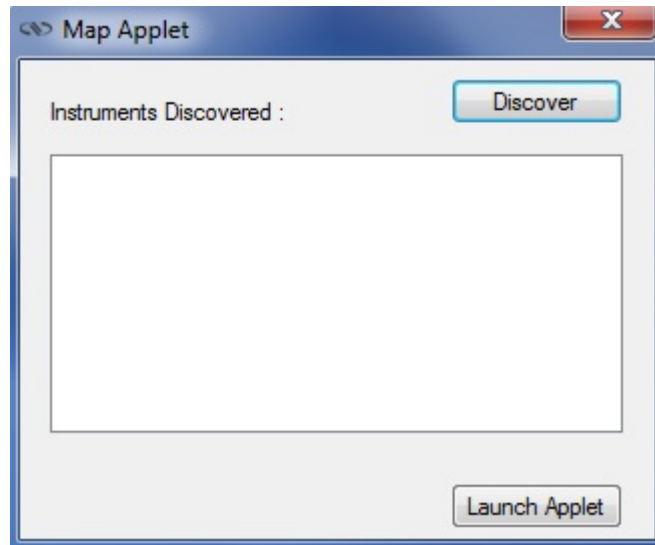


NOTES

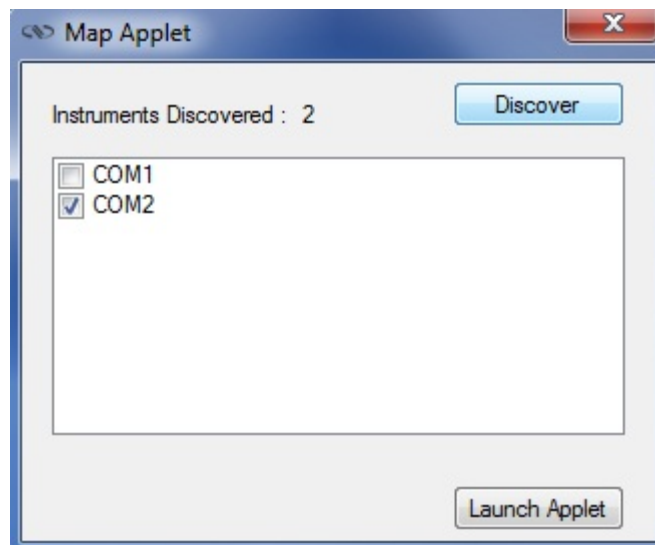
Note the COM port number (x) assigned to the device. This will be required for troubleshooting.

2.4 Discover Instruments

Start the Controller GUI from `Newport\MotionControl\CONEX-PP`.



Next, click on “**Discover**” and the number of stages discovered will appear. This window allows the user to select a COM port where the desired stage is connected.



NOTE

When more than one CONEX-PP stage is connected, multiple instances of this GUI can be open to control each individual stage. To discern a COM port for a specific instrument, note their COM number in the Device Manager when the connection is added.

Next, click “**Launch Applet**” button.

3.0 User Interface

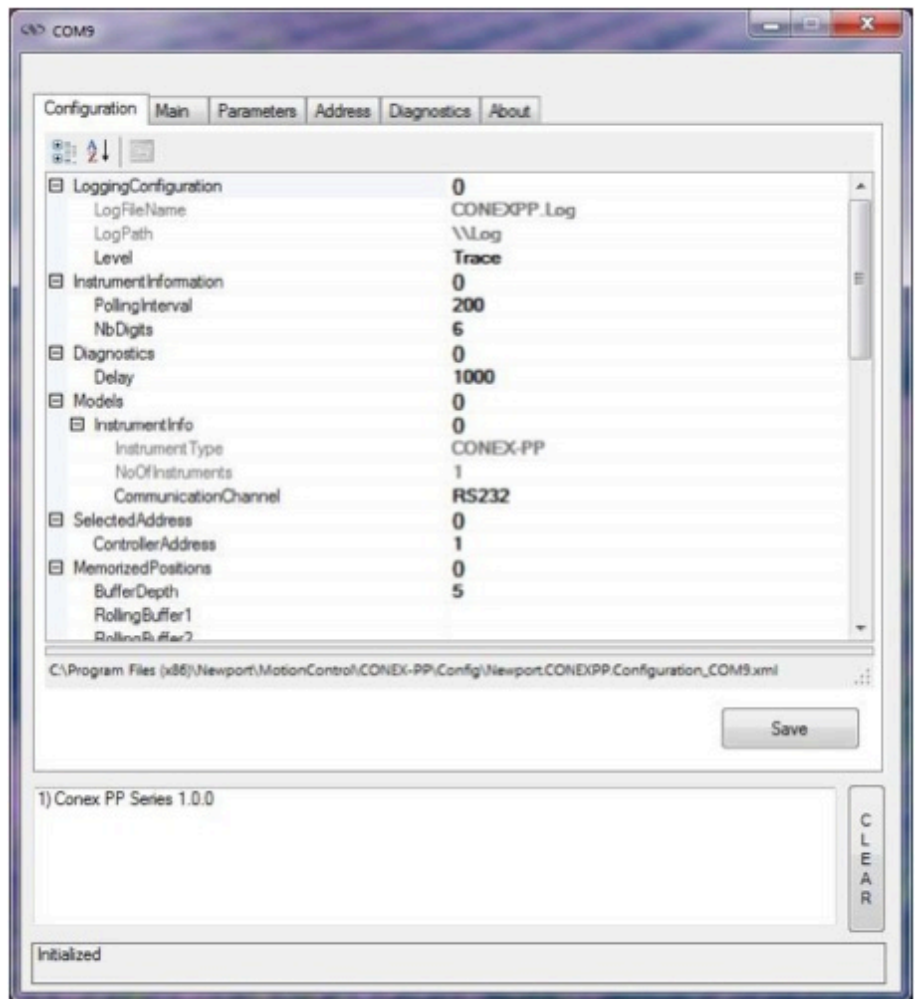
3.1 Configuration

The Configuration tab allows the user to view and/or change information related to the logging configuration and the instrument settings.

In LoggingConfiguration, read only values are displayed for the log file name and the log file path. The logging level may be changed to any of the settings in the drop-down list on the right hand side.

Trace is the most detailed of the settings. When this setting is selected, the Controller GUI logs all the information.

Critical Error is the least detailed of the settings. When this setting is selected, the Controller GUI will only log errors that are defined to be critical.



The polling interval defines the number of milliseconds between each time the Controller GUI polls the CONEX-PP series for the latest information. The user may change the polling interval by entering a value. Diagnostics Delay defines the time delay in milliseconds between each command sent from a text file.

InstrumentType and NoOfInstruments display the name and number of connected instruments.

The **Save** button allows the user to save the current settings to the configuration file.

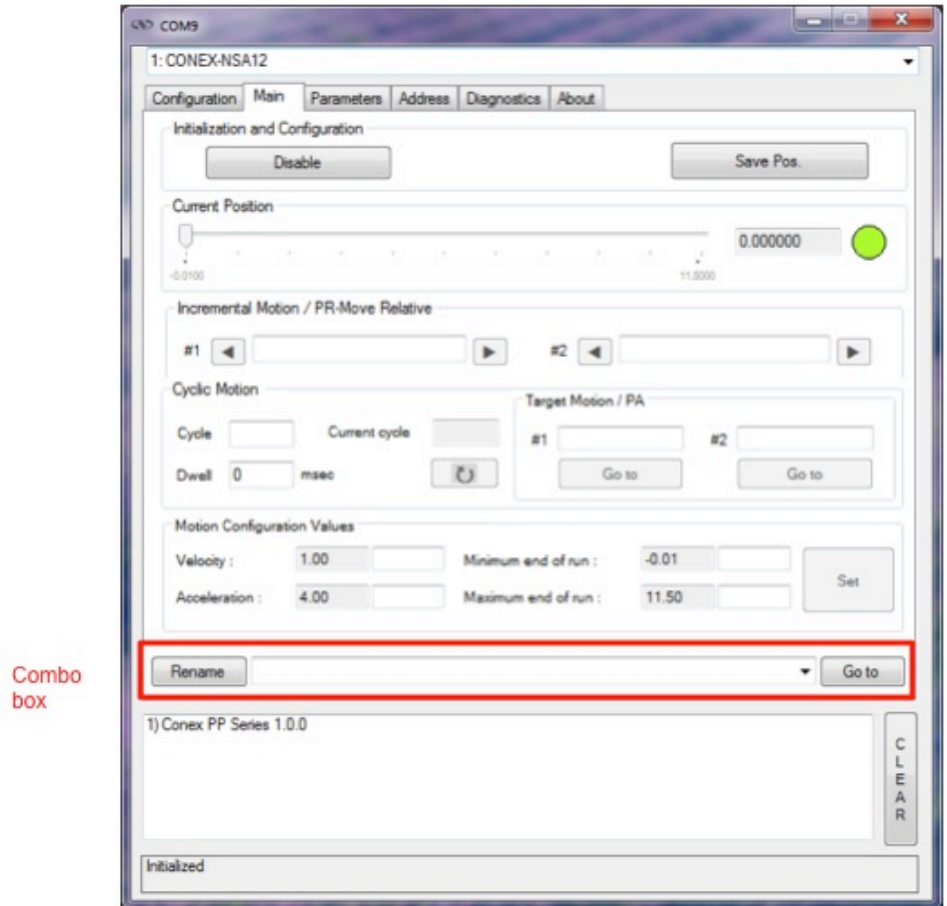
Configurable settings

The following table describes all the settings that can be changed by the user.

Parameter	Description	Values / Type	Default
LoggingConfiguration			
Level	Logging level. Trace is the most detailed of the settings and when this setting is selected the applet logs everything. Critical Error is the least detailed of the settings and when this setting is selected the applet will only log errors that are defined to be critical.	Trace Detail Equipment Message Info Warning Error Critical Error	Trace
InstrumentInformation			
PollingInterval	The polling interval defines the number of milliseconds (delay) between each time the applet polls the instrument for the latest information.	An Integer	200
NbDigits	Number of fractional digits after the decimal point.	An Integer	6
Diagnostics			
Delay	The delay defines the number of milliseconds between each sent command from a text file.		
ModelsInstrumentInfo			
CommunicationChannel	The communication channel	RS232	RS232
MemorizedPosition			
BufferDepth	BufferDepth defines the maximum number of analog I/O values displayed in the chart.	An Integer	5
RollingBuffer	The list of the memorized position in the rolling buffer for a selected controller address	A String	
SelectedAxis			
ControllerAddress	List of the selected controller address.	A String	

3.2 Main

The *Main* tab displays the main controls in the Controller GUI like a virtual front panel. It is updated each time the polling interval timer expires.



“Initialization and Configuration”

In the “Initialization and Configuration” area, the first button changes the controller status to “Enabled” or “Disabled”. To see the different controller states, refer to the controller state diagram in section 1.3. The second button “Save Pos.” memorizes the current position in the combo box. As soon as a new position is memorized, this is displayed in the trace.

“Current Position”

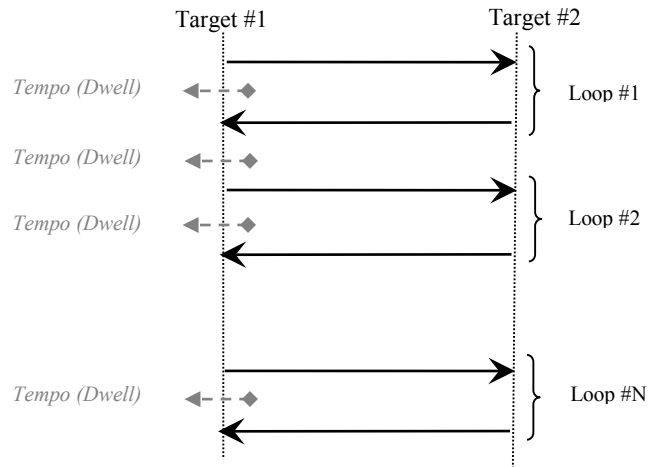
In the “Current Position” area, the current position is displayed in a text box and visualized in a slider. The slider limits are defined with the ends of run. An LED icon shows the current controller state. When the mouse hovers over the icon, the controller state is displayed in an information balloon.

“Incremental Motion / PR-Move Relative”

In the “Incremental Motion / PR-Move Relative” area, two increment values can be defined. For each defined increment, a relative move is performed in either the negative or positive direction.

“Cyclic Motion” and “Target position / PA”

In the “Cyclic Motion” area, a motion cycle is configured with a number of cycles (Cycle) and a dwell time in milliseconds. The motion cycle gets the defined target positions from the “Target Motion / PA” area to perform the cycle.



In the “Target Motion / PA” area, two target positions can be defined. The “Go to” button executes the absolute move to go to the specified target position.

“Motion Configuration Values”

In the “Motion Configuration Values”, the current ends of run, velocity, and acceleration are displayed in this area: “Minimum end of run”, “Maximum end of run”, “Acceleration”, and “Velocity” can be modified and saved with the “Set” button.

Memorized positions

The combo box memorizes the positions set by the “Save Pos.” button. Each of these positions can be renamed or deleted. To execute an absolute move to one of these memorized positions, select one item of the combo box and click on the “Go to” button. When the mouse moves over to the combo box, the position is shown in an information balloon.

Rename a memorized position: Select an item from the combo box, edit the position name to change it and click on the “Rename” button to save the new position name.

Delete a memorized position: Select an item from the combo box, right-click on the mouse and select the “Delete” menu to delete the selected memorized position.

NOTE

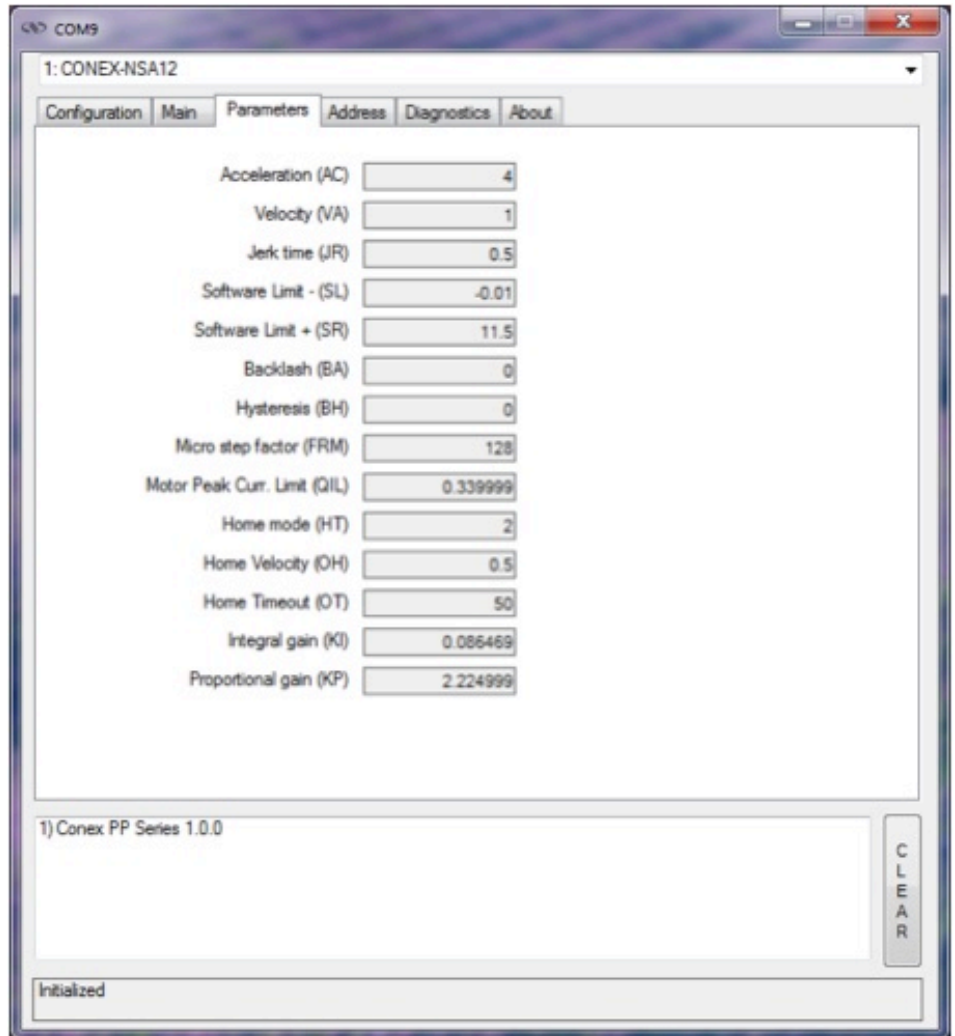
The CONEX-PP controller supports native units of millimeter (NSA) or degrees (NSR). All the parameters such as position, velocity and acceleration are defined on the same scale. These units are not shown in the GUI.

- **Position (Units)**
 - **Velocity (Units/s)**
 - **Acceleration (Units/s²)**
-

3.3 Parameters

The *Parameters* tab displays the stage parameters for the selected controller.

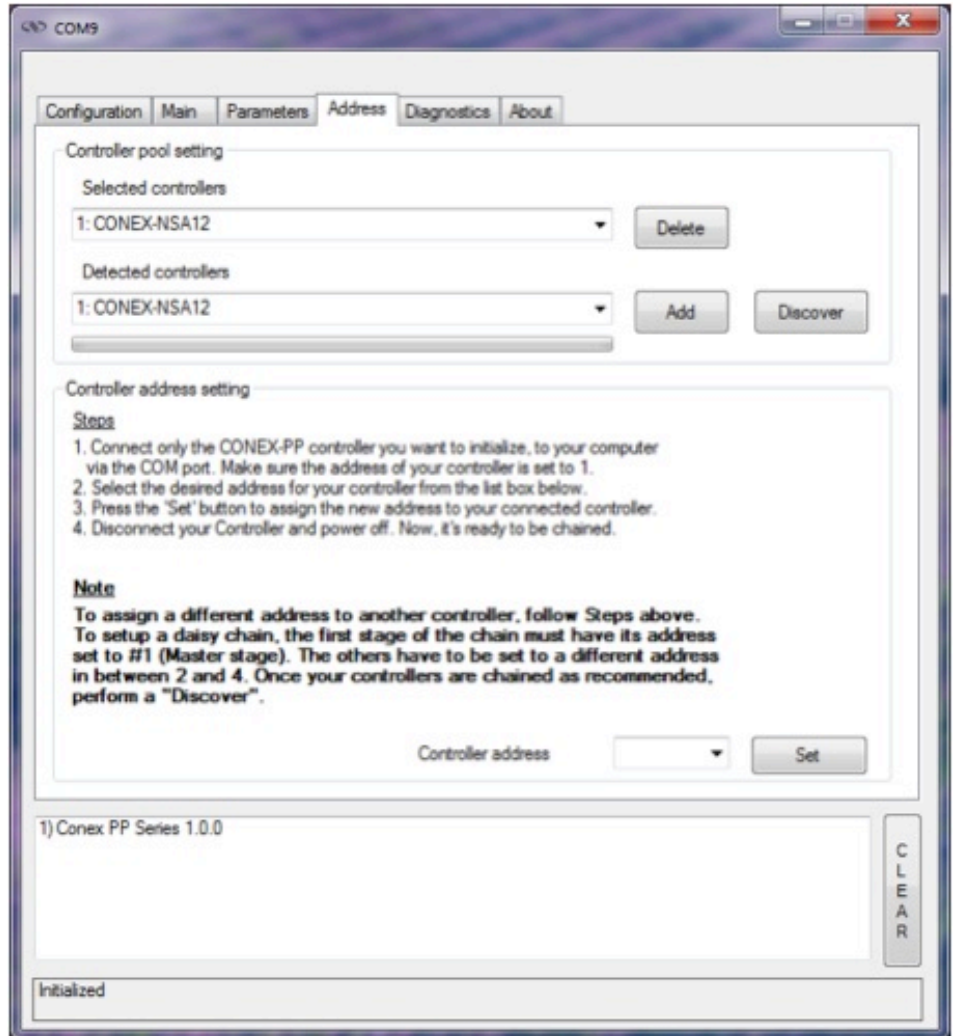
Note modification of parameters is disabled in the Parameters tab. User configuration parameter such as velocity, acceleration and End of Runs can be changed in the main tab. Other configuration parameters can be modified in the diganostics tab by using the commands. Refer to user’s manual for details of the commands.



3.4 Address

The *Address* tab allows the followings:

- 1) To scan and select connected CONEX-PP series controllers.
- 2) To configure the controller address



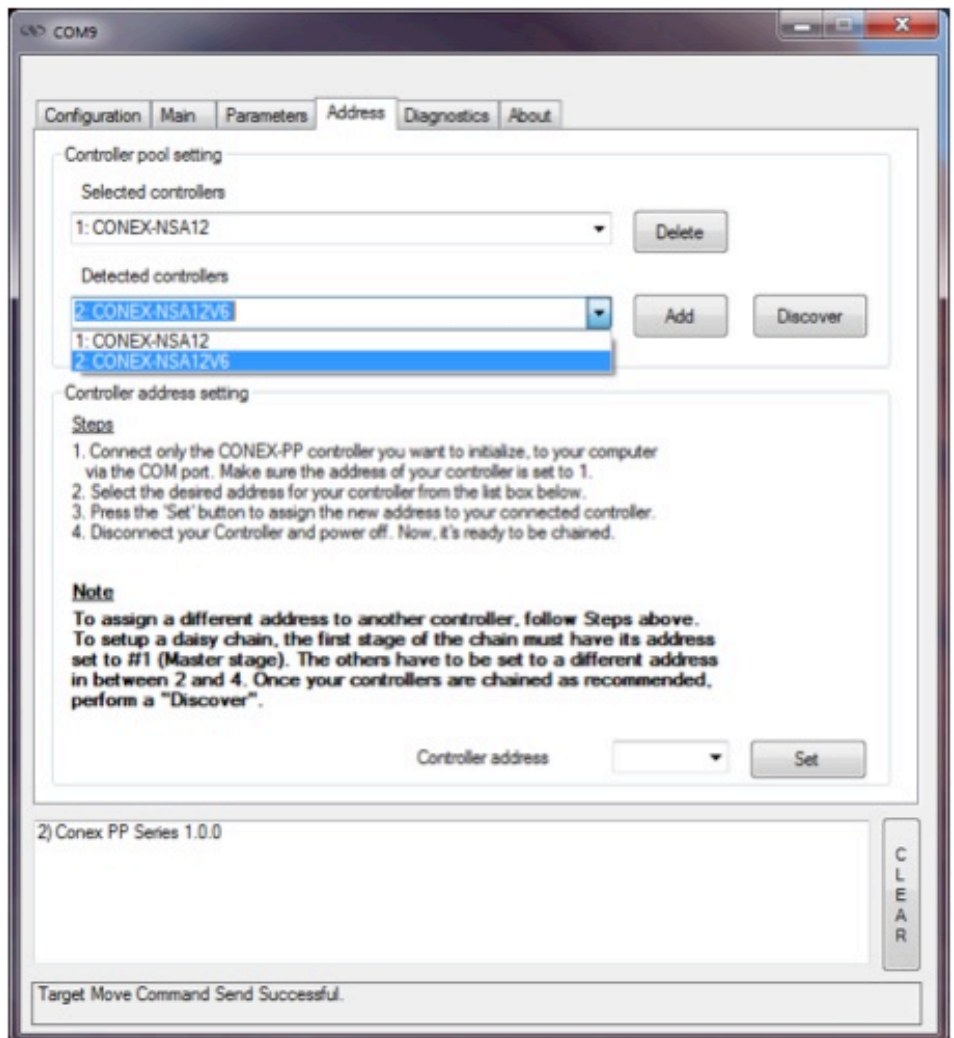
3.4.1 Controller pool setting

“Discover” button

The Discover button scans to detect connected CONEX-PP controllers (address #1 to address #4).



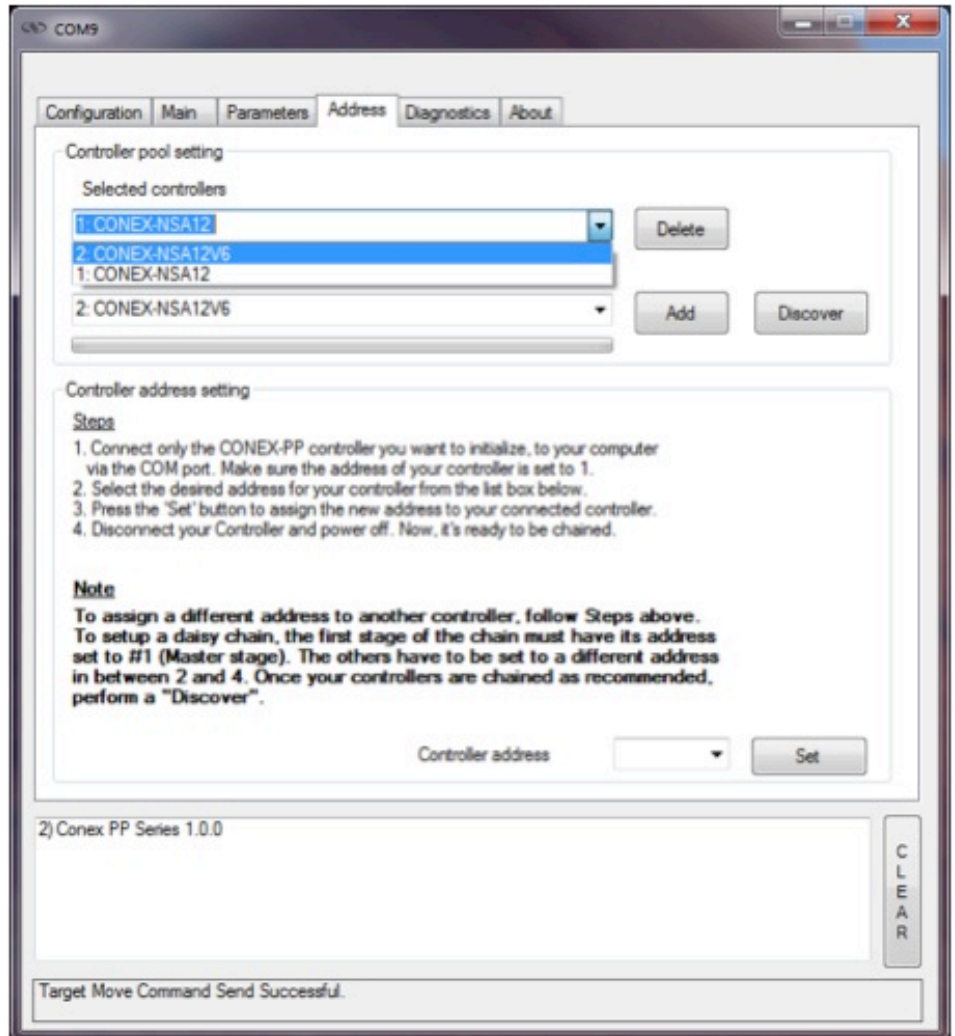
After a *Discover* action, the list of detected controllers is filled. Stage model number is shown next to the address #1 through #4. This address helps to identify each controller connected.



“Add” button

The *Add* button allows the user to add a connected CONEX-PP controller to the list of selected controllers.

After adding a detected controller, the list of selected controllers is updated.

**“Delete” button**

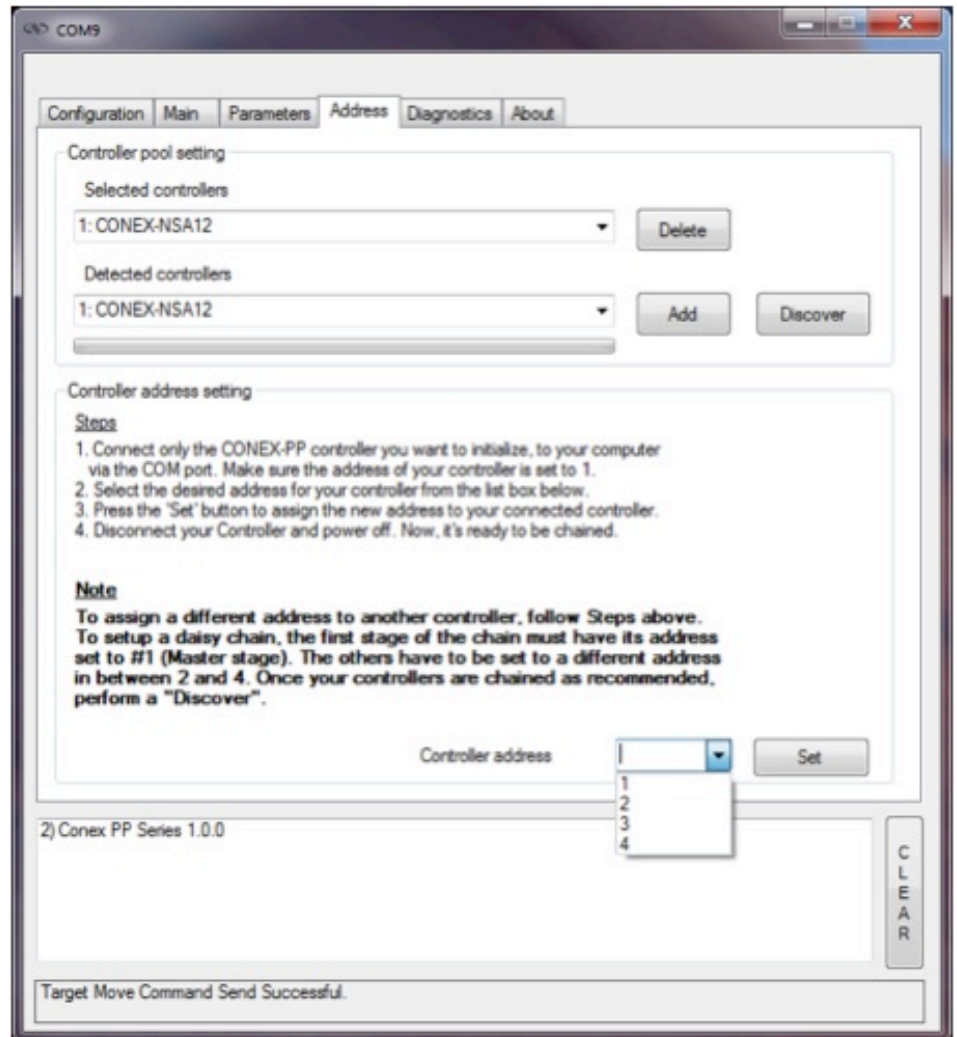
The *Delete* button removes the selected FC controller from the list of selected controllers.

3.4.2 Controller address setting

This part allows the user to configure the address of the CONEX-PP controller.

“Set” button

Select a controller address from the list and press the “Set” button. A progress bar is displayed during the address configuration.



Now disconnect this controller from your PC and connect the next one. Select a new, unallocated address and press the “Set” button again (proceed the same way with all other controllers).

3.4.3 Daisy-chaining

Up to 4 **CONEX-PP series controllers** can be networked through the internal RS232 communications link. Before daisy-chaining, the controller address of each stage must be set separately. The CONEX-PP controller that will be connected to the PC must have its controller address set to 1 and all subsequent stages must have a different controller address set between 2 and 4.

Once the controller address of each stage is set, **unplug all the power cables and disconnect the USB cable** from all the stages except for the CONEX-PP controller that has its address set to 1. Use the daisy chain cables to connect each controller. It does not matter whether you use the upper or lower RS422 connector to daisy chain the stages.

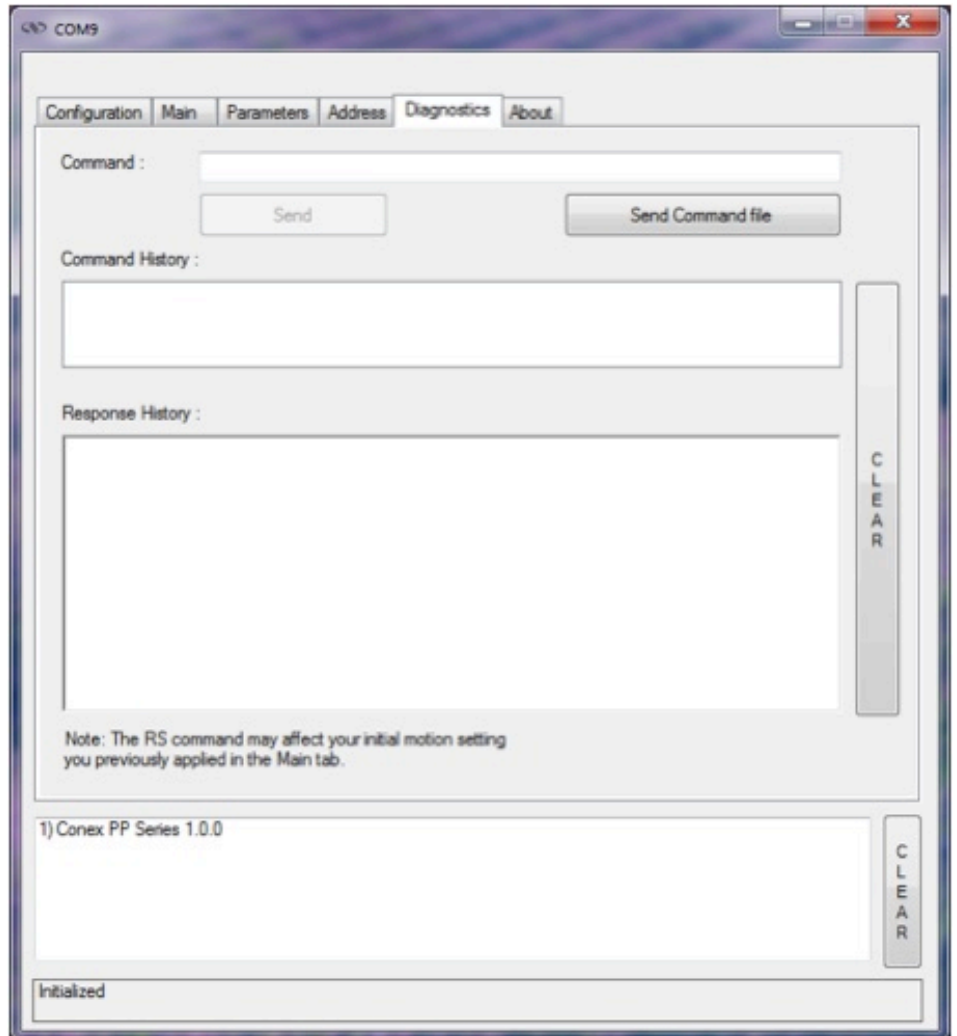
- Only the CONEX-PP controller with address 1 should be connected to the PC
- All other CONEX-PP controllers must be daisy-chained.

Plug in all the power supplies and open the GUI. Under the Address tab select the Discover button to scan for connected CONEX-PP stages. Once the scan is complete, discovered controllers will be added in “Detected controllers” list. Use the “Add” button to add controllers to the “Selected controllers” list.

3.5 Diagnostics

The Diagnostics tab allows the user to enter instrument commands and to view the history of commands that were sent and the responses that were received. This list of commands and the syntax of each command can be found in the user’s manual.

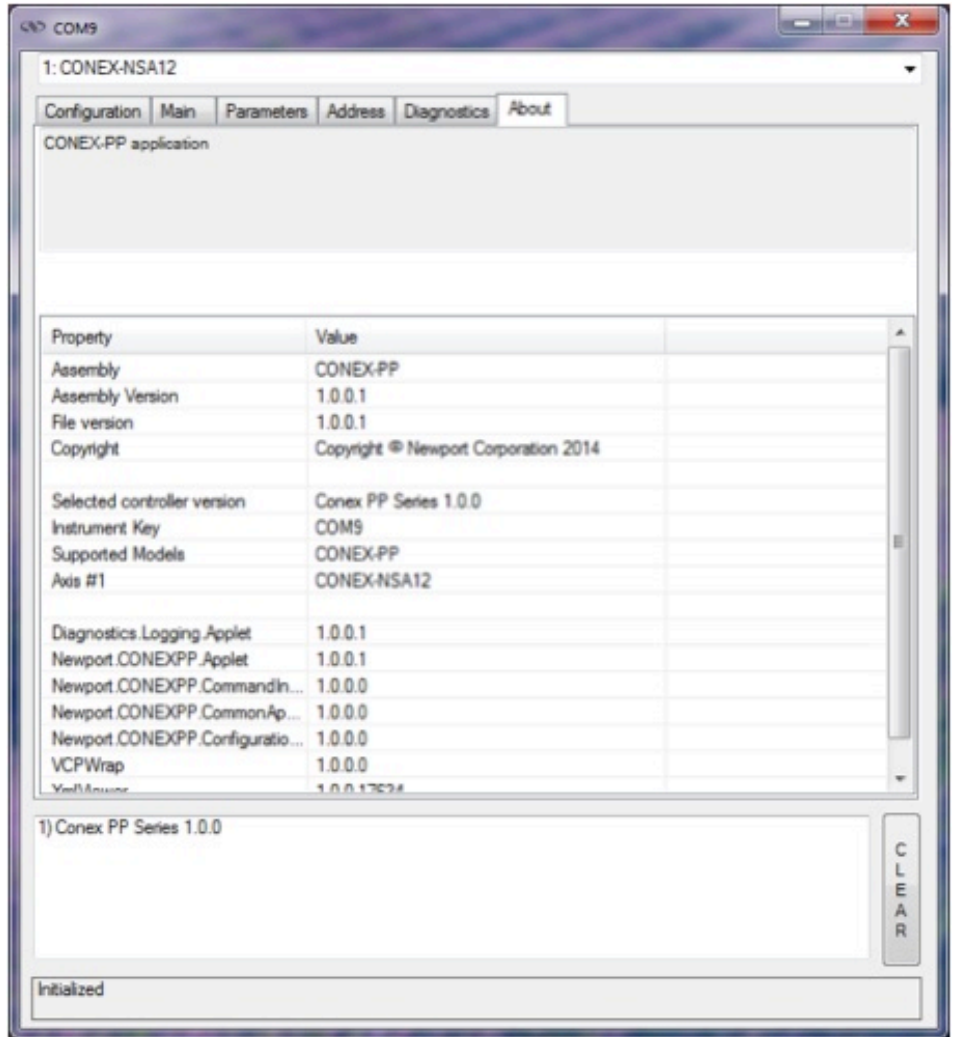
A file of commands can be sent line by line to the controller with the “Send Command file” button.

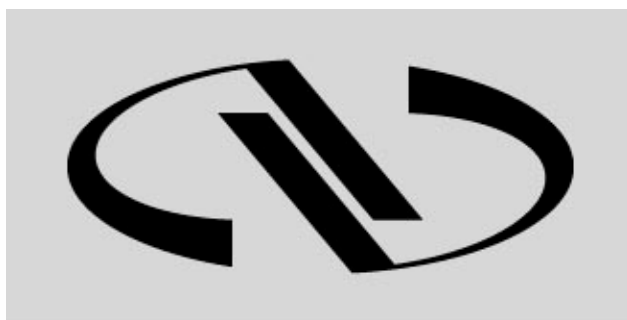


3.6 About

The About tab displays the information about the GUI and the connected instrument. It displays the Controller GUI name, version, and copyright information.

It also displays the instrument model, the instrument key (serial number or COM port), the firmware version and the list of the selected axes.





Newport®

Experience | Solutions

Visit Newport Online at:
www.newport.com

North America & Asia

Newport Corporation
1791 Deere Ave.
Irvine, CA 92606, USA

Sales

Tel.: (800) 222-6440
e-mail: sales@newport.com

Technical Support

Tel.: (800) 222-6440
e-mail: tech@newport.com

Service, RMAs & Returns

Tel.: (800) 222-6440
e-mail: service@newport.com

Europe

MICRO-CONTROLE Spectra-Physics S.A.S
9, rue du Bois Sauvage
91055 Évry CEDEX
France

Sales

Tel.: +33 (0)1.60.91.68.68
e-mail: france@newport.com

Technical Support

e-mail: tech_europe@newport.com

Service & Returns

Tel.: +33 (0)2.38.40.51.55