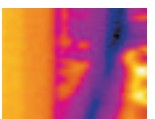
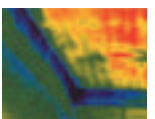


ThermaCAM™ B4

Especially developed for the building industry
Unparalleled image quality (320 x 240 pixels)



- HIGH THERMAL SENSITIVITY (0.08°C)
- EXTRAORDINARY IMAGE QUALITY (320 x 240 PIXELS)
- USEFUL BUILDING FEATURES INCORPORATED
- SOUND AND COLOR ALARMS
- WIDE-RANGE OF LENSES AND ACCESSORIES
- THERMACAM QUICKVIEW™ SOFTWARE INCLUDED
- COMPATIBLE WITH THERMACAM REPORTER™ AND THERMACAM IMAGE BUILDER™
- SPECIAL CALIBRATION FOR THE BUILDING INDUSTRY (-20°C +55°C)



Infrared camera producing ultra-sharp images with all features for professional building inspections

ThermaCAM™ B4

EASY AND QUICK BUILDING INSPECTIONS WITH THE THERMACAM B4

To meet the specific needs of the demanding building industry FLIR Systems has teamed up with professional and experienced building inspectors and has developed the ThermaCAM B4. The result is an infrared camera with unparalleled image quality (320 x 240 pixels), which has the features that are indispensable when doing infrared building inspections, and the necessary software to make professional inspection reports.

POWERFUL FEATURES ESPECIALLY DEVELOPED FOR THE BUILDING INDUSTRY

- UNPARALLELED IMAGE QUALITY (320 x 240 PIXELS)
- AUTOMATIC DEW POINT IDENTIFICATION ALARM - IN THE CAMERA, ON-SITE, NO SOFTWARE NEEDED
- SOUND AND COLOR ALARMS
- LASER LOCATIR
- ESPECIALLY CALIBRATED FOR THE BUILDING INDUSTRY (-20 °C UP TO +55 °C)



ADAPTABLE TO THE MOST CHALLENGING SITUATION THANKS TO A WIDE RANGE OF ACCESSORIES

The ThermaCAM B4 is designed with a 25° lens, which is suitable for a majority of building applications. Interchangeable optics offer the building thermographer the flexibility to adapt his infrared camera to the most demanding building applications.

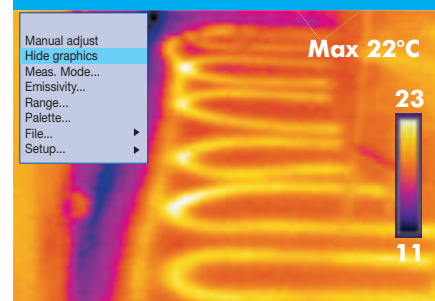
FLEXIBLE STANDARD JPEG IMAGE STORAGE

The camera stores more than 80 infrared pictures in standard, low density JPEG format, giving you instant visibility of the images stored in the field.



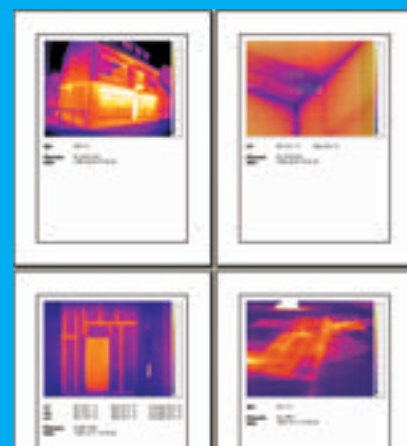
EASY OPERATION

At the touch of a button you can easily change color palettes, emissivity settings, temperature ranges and other analysis tools. Built-in menu systems provide easy access to advanced yet simple to use software.



LOCATE AND ANALYZE PROBLEMS FAST

Analyze problems and share results with your colleagues in the field. Movable crosshairs allow you to measure and analyze the temperature at a single point. Find the hottest spot in a defined area, highlight areas of concern with color or sound alarms. The ThermaCAM B4 has all the analysis tools you need to make instant building decisions in the field.



THERMACAM QuickView™ BASIC REPORTING SOFTWARE INCLUDED

The ThermaCAM B4 comes with the ThermaCAM QuickView software included. This allows you to do basic post-analysis of your captured IR images and to make simple reports in a PDF-format.



RUGGED, ERGONOMIC AND LIGHTWEIGHT USEABLE IN ALL WEATHER CONDITIONS

Dust- and splashproof, the B4 meets IP54. It can be used both indoor and outdoor in the most diverse weather conditions. Hold the ThermoCAM B4 in your hand. Clip it

to your belt or put it in your toolbox. With a weight of less than 800 grams, the B4 is ready to be used several hours a day.

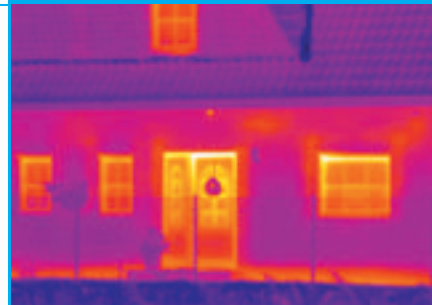
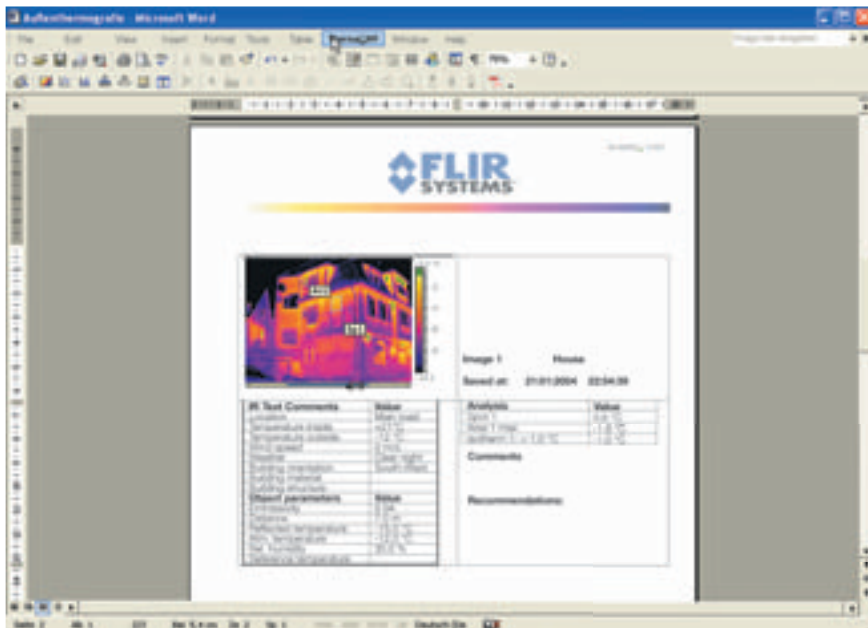
SOFTWARE: USEFUL PACKAGES, DESIGNED FOR THE BUILDING INDUSTRY

THERMACAM IMAGE BUILDER™

Developed on request of the building industry, ThermoCAM Image Builder is an image assembling software that lets you create a large, composite infrared image out of many small images.

THERMACAM REPORTER™

Full radiometric images, captured by the ThermoCAM B4 can easily be incorporated in the new Microsoft Word based ThermoCAM Reporter software. You can make professional reports which you can present to your clients, architects,... immediately



SOUND AND COLOR ALARMS

The operator can set a maximum temperature in the camera. If the B4 is pointed to an object and this temperature is exceeded, the camera will produce an audible and/or a visible alarm.

SMART POWER MANAGEMENT

No need to worry about batteries dying and losing valuable inspection time. The lightweight, long-life Li-Ion battery ensures uninterrupted inspections. It runs up to 2 hours and the ThermoCAM B4 features an internal battery charger. A 2-battery charging system and a car/truck charger adapter, so that you can charge to camera on the way to your next job, are optionally available.

PRECISION TEMPERATURE MEASUREMENT - EXTRAORDINARY IMAGE QUALITY

The ThermoCAM B4 delivers unmatched temperature measurement accuracy. It has a thermal sensitivity as low as 0.08°C and produces clear noise-free infrared images.

A low thermal sensitivity not only offers you the possibility to see the smallest of temperature changes, it also means that you get a clear, noise-free, excellent quality image which can not be obtained by less sensitive cameras. Thanks to these very detailed images, which are displayed on the camera's 2.5" color LCD, you will clearly see the smallest temperature changes in a building.



))) beep
beep



TECHNICAL SPECIFICATIONS

FLIR SYSTEMS AB

World Wide Thermography Center
Rinkebyvägen 19 - PO Box 3
SE-182 11 Danderyd
Sweden
Tel.: +46 (0)8 753 25 00
Fax: +46 (0)8 753 23 64
e-mail: sales@flir.se
www.flir.com

FLIR SYSTEMS LTD.

United Kingdom
Tel.: +44 (0)1732 220 011
e-mail: sales@flir.uk.com

FLIR SYSTEMS Co. LTD.

Hong Kong
Tel.: +852 27 92 89 55
e-mail: flir@flir.com.hk

FLIR SYSTEMS GmbH

Germany
Tel.: +49 (0)69 95 00 900
e-mail: info@flir.de

FLIR SYSTEMS SARL

France
Tel.: +33 (0)1 41 33 97 97
e-mail: info@flir.fr

FLIR SYSTEMS S.R.L.

Italy
Tel.: +39 02 99 45 10 01
e-mail: info@flir.it

FLIR SYSTEMS AB

Belgium
Tel.: +32 (0)3 287 87 10
e-mail: info@flir.be

WWW.FLIR.COM



SPECIFICATIONS ARE SUBJECT TO
CHANGE WITHOUT NOTICE
©Copyright 2005, FLIR Systems, Inc.
All other brand and product names are
trademarks of their respective owners

IMAGING PERFORMANCE

Field of view/min focus distance	25° x 19°/0.3 m
Thermal sensitivity	0.08°C at 30°C
Image frequency	25/30 Hz non-interlaced
Focus	Manual
Detector type	Focal Plane Array (FPA), uncooled microbolometer
	320 x 240 pixels
Spectral range	7.5 to 13 μm
Digital zoom	1x, 2x or 4x

IMAGE PRESENTATION

Video output	PAL or NTSC, standard RCA composite video
External display	2.5" color LCD, 16K colors

MEASUREMENT

Temperature range	-20°C to +55°C
Accuracy	±2°C, ±2%
Repeatability	±1°C, ±1%
Measurement mode	3 movable spots, area max, area min, area avg, dew-point alarm color and/or sound alarm above or below Palettes (iron, rainbow, rainbow HC, B&W, B&W inverse), auto-adjust (continuous/manual)
Menu controls	Date/time, temperature units °C/°F, language, scale, info field, LCD intensity (high/normal/low)
Set-up controls	Emissivity variable from 0.1 to 1.0, reflected ambient
Measurement corrections	

IMAGE STORAGE

Type	Built-in FLASH memory (> 80 images)
File formats	Standard JPEG

LENSES (OPTIONAL)

2 x Telescope	15° x 11°/0.5 m
0.5 Wide angle	45° x 36°/0.2 m



adapt your camera
to EVERY situation

LASER LOCATOR™

Classification	Class 2
Type	Semiconductor AlGaInP Diode Laser: 1mW/635 nm red

BATTERY SYSTEM

Type	Li-Ion, rechargeable, field replaceable
Operating time	2 hours continuous operation. Display shows battery status
Charging system	In camera, AC adapter or 12 V from car (with optional Std. cable) 2 bay intelligent charger, 12 V (optional) AC adapter 90-260 V AC, 50/60 Hz, 12 V DC out 11-16 V DC
AC operation	Automatic shutdown and sleep mode (user selectable)
Voltage	
Power saving	

ENVIRONMENTAL SPECIFICATION

Operating temperature range	-15°C to +45°C
Storage temperature range	-40°C to +70°C
Humidity	Operating and storage 20% to 80%, non-condensing
Encapsulation	IP54, IEC 359
Shock	Operational: 25G, IEC 68-2-29
Vibration	Operational: 2G, IEC 68-2-6

PHYSICAL CHARACTERISTICS

Weight	< 800 g, incl. battery with 25° lens
Size	272 mm x 80 mm x 105 mm
Tripod Mounting	1/4" - 20
Cover case	Plastic and rubber

INTERFACES

USB	Image transfer to PC
RS-232 cable (optional)	Image transfer to PC
Video Output	Standard RCA composite video

THERMACAM™ B4 INCLUDES:

IR camera, Carrying case, Power supply, Handstrap, Lens cap,
ThermaCAM Quickview™ Software, USB cable, User manual,
Power cord, Battery