

User's Guide

Tenma USB PC Based Digital Oscilloscope Operation Manual



Certificate of Product Warranty

This product's warranty, provided by our company, covers a period of 1 year from the date of purchase. All faulty parts and/or functions, resulting despite user's normal use, will be repaired and/or replaced at no charge during the warranty period.

However, if any of the malfunctions are caused by user carelessness, inadequate maintenance, or natural disaster, we will provide repair and/or replacement services for a fee regardless of warranty period.

In the event our product does not prove suitable for your application you can return the product for an exchange or refund. To claim, the product must be returned in good condition within 14 days. Before returning a product, please contact and provide us a serial number. The customer is responsible for all shipping costs.

Products covered by this warranty are limited to those that are registered at the headquarter or branch offices and repairs, replacements, or refunds will be issued according to manufacturer's discretion. When the product is in need of warranty services, the purchaser may contact the distributor with the product or send the product with a detailed description of services required via postal service to the distributor or sales offices (the purchaser will be responsible for packaging, postage, and any postal insurance).

Once repair services are completed or product is replaced, the supplier will return the refurbished or new product to the purchaser (return postage will be paid by the supplier).

However, if we determined required services to be outside the boundaries of the warranty coverage, we will first contact the purchaser and provide an estimate of repair costs and obtain authorization to conduct services before any work is done.

In such a case, return postage along with the repair costs will be billed to the purchaser when the repaired product is returned.

We do not warrant that the software and the product with which it was supplied are completely error free or that will function correctly in all operating environments. It is essential that the users should verify that the software and product are functioning to your requirements before relying on them or the data that they generate. We do not accept responsibility for any loss or injury caused by the use of the product or software. It is the user's responsibility to ensure that the product is suitable for the user's application.

We will not be held legally for any malfunction resulting from user carelessness, abnormal use, and/or natural disaster. Even if we are in receipt of prior notification of such dangers, we will not be held legally liable.

Product Warranty Guide

Please read through the "Precautions for Safety" carefully to ensure a long life and safe use of this product.

This product has been processed through careful quality control and testing procedures. Any malfunctions occurring during normal use are covered under the guidelines of the "Certificate of Product Warranty", which is included in this Manual.

If you experience product malfunction, please contact the distributor of this product.

Precautions for Safety

The following instructions are provided for safe and correct use of the product and to prevent a potentially dangerous situation or damage. Be sure to read through the entire manual before you use the product.

Recommended Usage Environment

- The ambient temperature and relative humidity should be 32°-104°F (0-40°C) and 10-80% respectively for the normal operation of the product.

Power Source

- The USB terminal and are connected via a USB cable for DC +5V power from the PC. The product does not require an outside power source.

Warning: Be careful not to input excessive power voltage.

- The product's input power capacity is fixed as shown below to prevent electric shock and/or fire. Please DO NOT use voltage higher than that prescribed below.
(Warning) Be sure to check the probe attenuation before measuring the voltage. The voltage that is higher than the maximum input voltage can cause damage to the device and the user. There is the risk of an electric shock when measuring high voltage. The user needs to pay extra attention not to have their hand or other exposed skin or conductive material touch the terminal.
- Please remove all unused probes or test leads in the test area so that they do not come in contact with surrounding high voltage parts.
- Make sure that the PC's power source is grounded.

Handling Precautions

- The probe ground lead is at ground potential. Do not connect the ground lead to an elevated voltage. Connect the ground lead of the probe to earth ground only.
If measuring the floating potential, we will recommend taking the measurement by the differential motion method using CH1 and CH2.
- Do not connect or disconnect the product with the probe or test lead while it is connected to a voltage source.
- Do not attempt to operate the product in any situation that a risk of dysfunction or shock could be expected.
- Stop using the product immediately when you notice something unusual; such as abnormal smells, smoke or sounds.
If you noticed anything unusual, also immediately remove the USB connection from your computer.
- Keep the product out of the reach of children or those untrained or who cannot be trusted with the use.
- Do not use the product with wet hands. It can cause a dangerous electric shock.
- Do not attempt to use the product for the purposes other than those stated.

Usage Location

- If the products openings are exposed to conductive materials (solids or liquids), the product will short circuit and possibly create dangers of electric shock or fire. Please keep this product away from humidity, water, metallic debris or dust.
- DO NOT use this product near combustible gas as well as other flammable and/or explosive materials.
- Store the product out of direct sunlight.
- DO NOT use the product in an atmosphere that is dirty, where other machines are operated, or there is a high level of electromagnetic waves.
- DO NOT place the product on an unstable cart, stand, or tripod as such usage creates danger of accidents and/or damage to product.

Maintenance and Storage

- If not using it for a long term, remove the USB cable from the product.
- The recommended temperature and humidity for equipment storage is 60-75F at 50% humidity.

User Service

- There are no parts that you can replace inside the product. Do not attempt replacing a part yourself. It can give you an electric shock.
- Do not attempt to open the case or repair yourself. It can cause an electric shock or other safety accidents.
- If the case is opened, all implied warranties and guarantee are made void.

Maintenance and Storage

- If not using it for a long term, remove the USB cable from the product.
- The recommended temperature and humidity for equipment storage is 25°C at 50% humidity.

After Service

- There are no parts that you can replace inside the product. Do not attempt replacing a part yourself. It can give you an electric shock.
- Do not attempt to open the case or repair yourself. It can cause an electric shock or other safety accidents.
- Once you open the case, you cannot have the privilege of an after-sales service.

Minimum System Requirements

To install and run 72-10155 USB, you should have the following.

Operating System

Windows 98/ME/2000/XP/VISTA

Memory

128Mbyte

Graphic Card

Microsoft DirectX supported

Screen resolution: 800x600

Color depth: 16bit

Hardware Specification

Acquisition	
Sample Mode	Real-Time Sample
Sample Rate	Real-Time Sample: 150MSa/s
Average	N acquisitions, all channels simultaneously, N is selectable from 1-128.

Input	
Input Coupling	DC, AC, GND
Input Impedance	Resistance: 1MΩ; Capacitance: 25pF
PP-80, PP-150 and PP-200 Probe Attenuation	10X
Supported Voltage Probe Attenuation Factors	1X, 10X
Maximum Input Voltage	35Vpk (DC + peak)

Horizontal	
Scanning Speed Range(Sec/Div)	4ns/div ~ 1h/div(1-2-4 sequences)
Sample Rate and Delay Time Accuracy	±50ppm(any interval ≥1ms)
Wave form Interpolation	Step, Linear, Sin(x)/x
Memory Depth(Sample Points)	10K : available all timebase 32K : 20us/div-400ms/div(Single channel); 40us/div-400ms/div(Dual channel); 64K : 40us/div-400ms/div




Vertical	
Analog Bandwidth	60MHz (-3dB)
A/D converter	8 bit resolution
Vertical Scale(Volt/div) Range	10mV ~ 5V/div @ x1 probe(1,2,5 sequence) 100mV ~ 50V/div @ x10 probe
Position Range	±4division
Selectable Analog Bandwidth Limit(typical)	20MHz
Lower Frequency Response(-3dB)	≤ 10Hz(at input BNC)
Rise Time at BNC(typical)	≤5.8ns
DC Gain Accuracy	±3%

Trigger	
Trigger Source	CH1,CH2, EXT
Trigger Mode	Auto, Normal and Single
Trigger Type	Edge trigger: Rising edge, falling edge.
Trigger Sensitivity	0.02 div increments
Trigger Level Range	±4V
Trigger Level Accuracy	±4 division

Measurement		
Cursor	Amplitude difference between cursors (ΔV)	
	Time difference between cursors (Δt)	
Auto Measure	Reciprocal of Δt in Hertz ($1/\Delta t$)	
	(Cross, Trace, Horizontal, Vertical)	
Auto Measure	Voltage Measurement	Vp-p, Vmax, Vmin, Vmean, Vamp, Vtop, Vbase, Vmid, Vrms, Vcrms, Preshoot, Overshoot
	Time Measurement	Frequency, Period, Rise Time(10%~90%), Fall Time(10%~90%), Positive Width, Negative Width, Duty Cycle

Environmental		
Temperature	Operating: 0°C to 40°C	
	Non-operating: -20°C to +60°C)	
Cooling Method	Forced air	
Humidity	Below +35°C, ≤90% relative humidity	
	+35°C to +40°C, ≤60% relative humidity	
Altitude	Operating	3,000m or below
	Non-operating	15,000m or below

Mechanical		
Size	Width	190mm
	Height	100mm
	Depth	35mm
Heavy	Without package	0.29kg
	Packaged	0.9kg

Accessories	Description
	X1, X10 two passive probes. The passive probes have a 6MHz bandwidth (rated 100Vrms CAT III) when the switch is in the X1 position, and a maximum bandwidth (rated 300Vrms CAT II) when the switch is in the X10 position. Each probe consists of all necessary fittings.
	A USB A-B line, used to connect external devices with USB-B interface like a printer or to establish communications between PC and the oscilloscope.
	A software installation CD. It contains the user manual of Tenma 72, giving particular descriptions on the Tenma 72 series oscilloscopes.

Introduction

developed by our company. is a portable PC-based Digital Oscilloscope.

High performance

has the following features: 60MHz analog bandwidth, 150MHz real-time sampling.

USB connected

Use's USB that supports plug's play, with 12Mbps communication speed.

Best performance for your dollar

has many features that are comparable to the high speed stand-alone Tenma72s. But it costs a fraction of the price.

No external power required

Do not need an external power source, because it is bus-powered from USB

Easy to use

is easy to use. It is intuitive and easy to understand.

Big screen

You can change screen size as you need.

Various data format processing

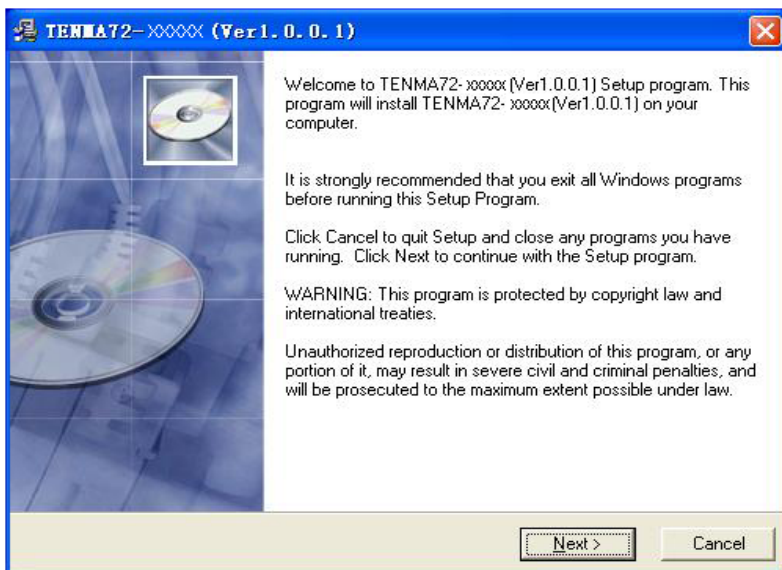
can save waveform in the following formats: text file, jpg/bmp graphic file, MS excel/word file.

Software Installation

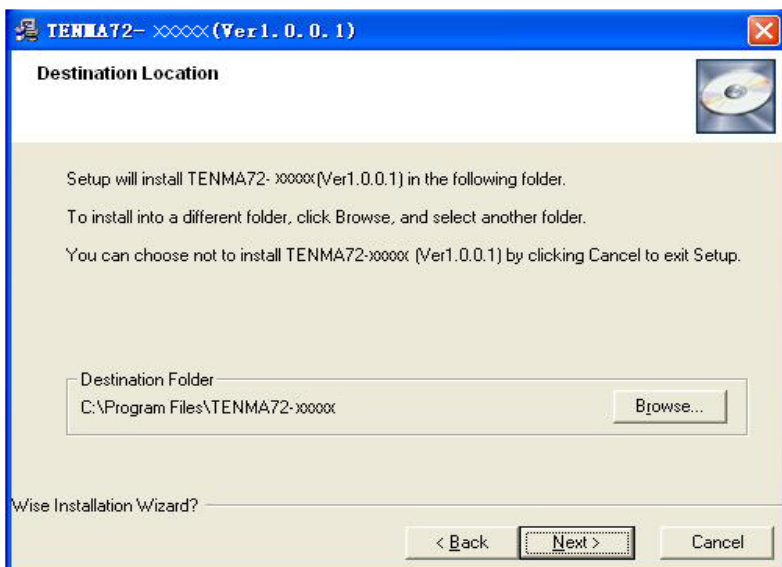
1. With the computer powered on, and Windows running, insert the installation CD into the CD-ROM drive.
2. The installation should start up automatically. Otherwise in Windows Explorer, switch to the CD-ROM drive and run “ Setup.exe”.



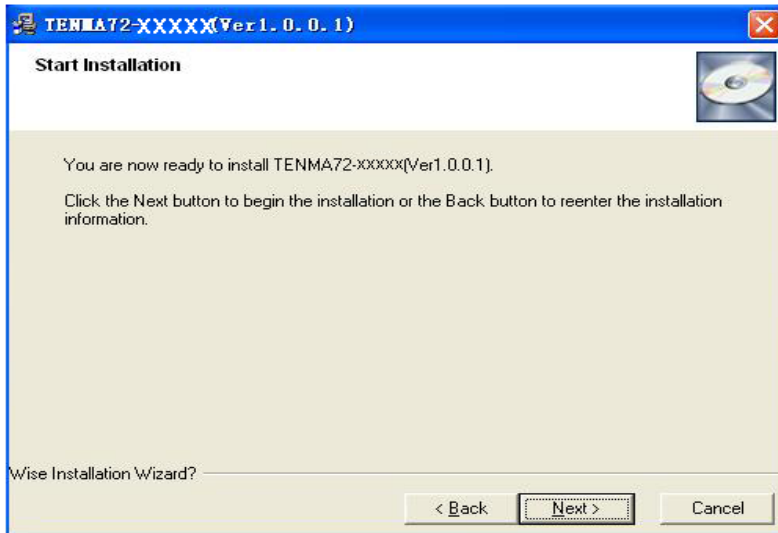
3. The 72-10160 Installation is started. Click 'Next' to continue.



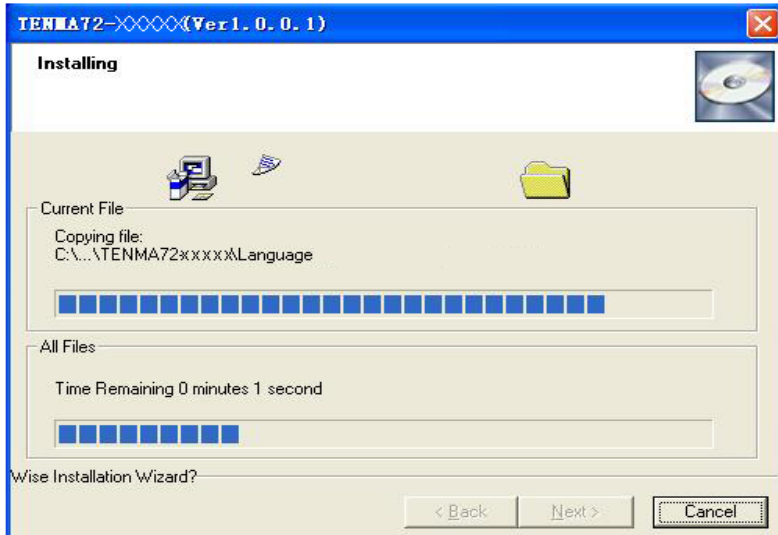
4. Choose a destination directory. Click 'Next' to continue.



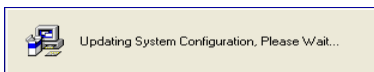
5. Check the setup information. Click Next to start copying of files.



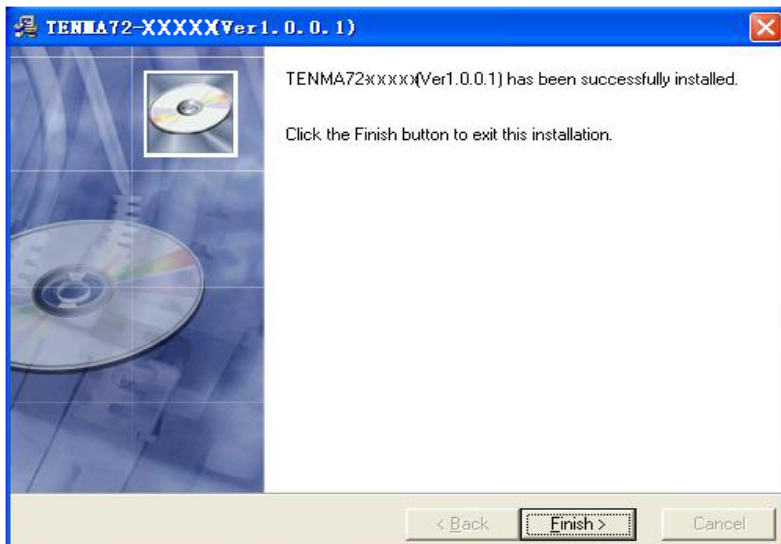
6. This Status dialog is displayed during copying of files.



7. Updating Your System Configuration.



8. The installation is complete.

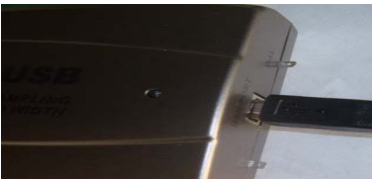


Hardware Setup

1. Connect the A-Type Plug of USB cable to your PC'S USB port.



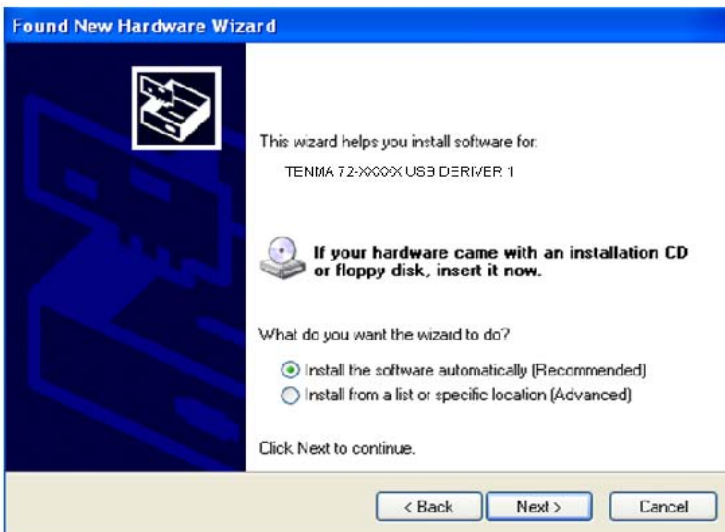
2. Connect the B-Type Plug of USB cable to 72-10160'S USB port.



3. New hardware is found.



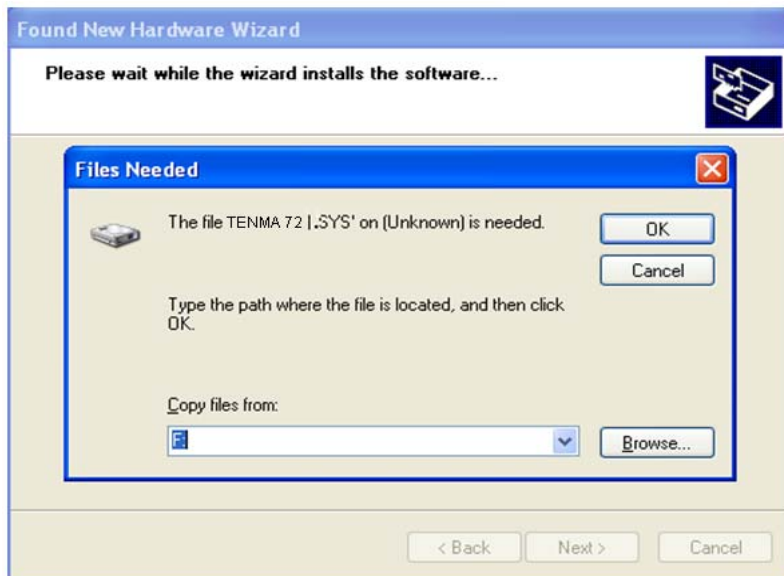
4. New hardware search wizard starts.

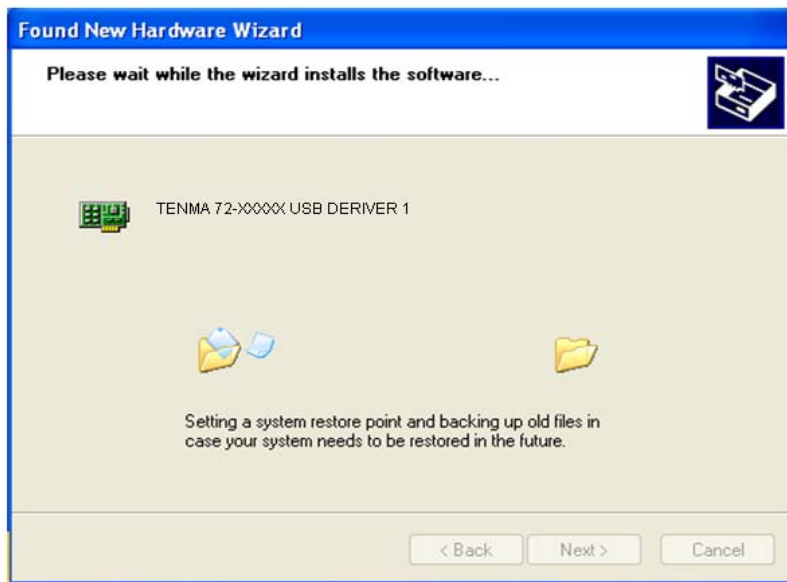
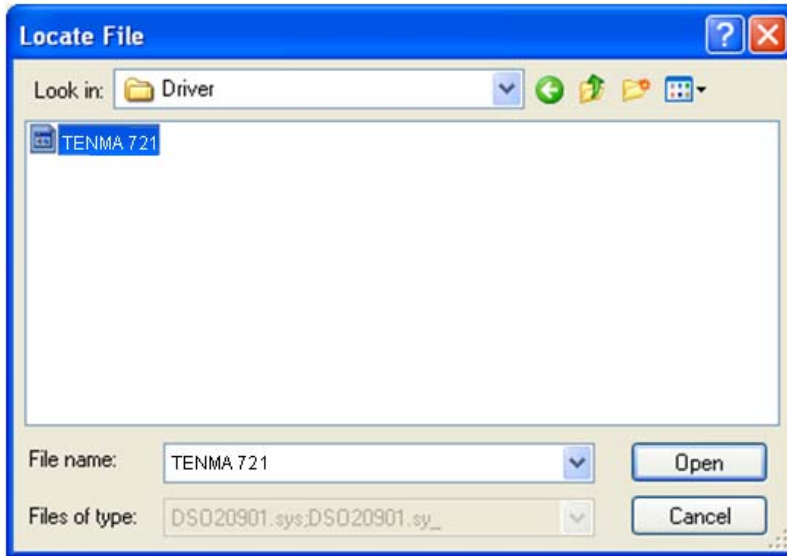


5. New hardware search wizard starts to search.



6. New hardware wizard installs software

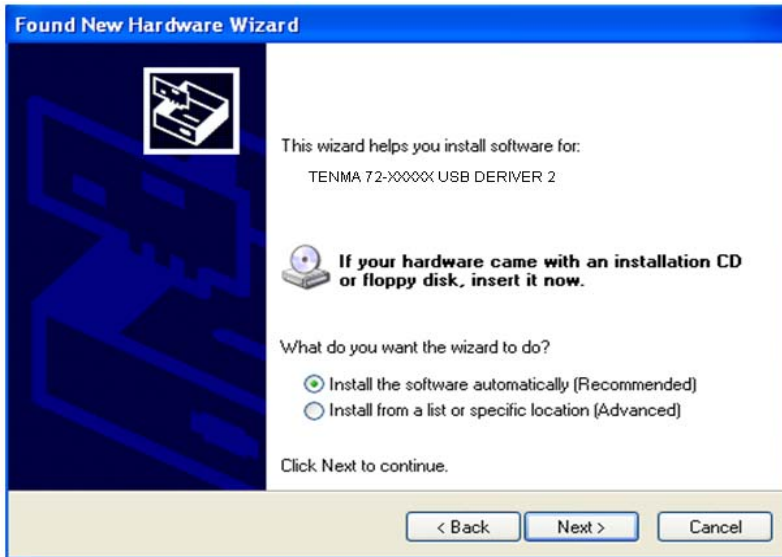




7. Finish new hardware search wizard.



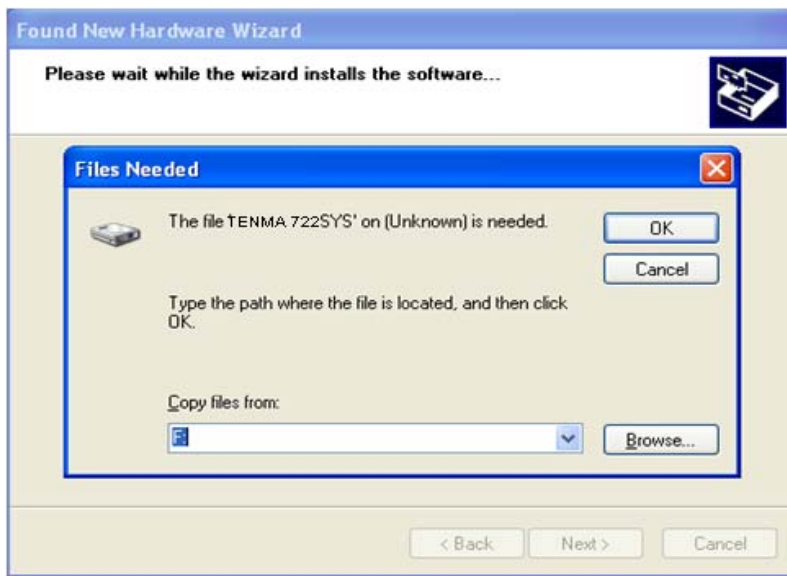
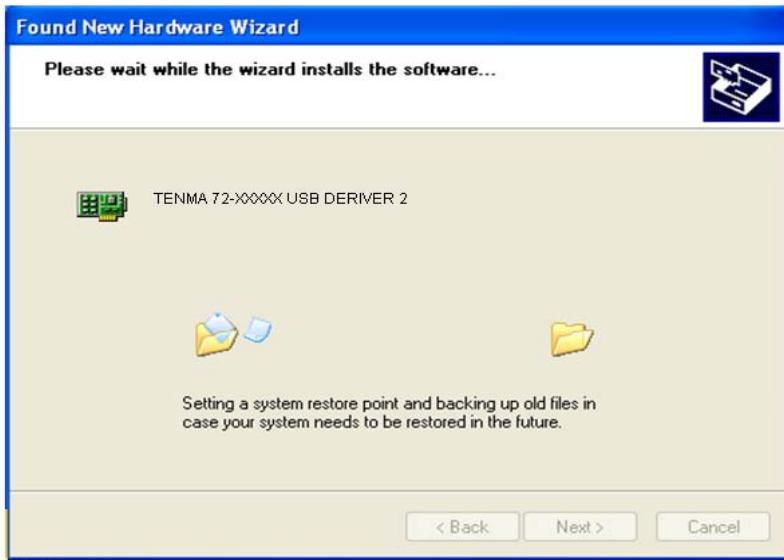
8. New hardware is found.



9. New hardware search wizard starts to search



10. New hardware search wizard starts to search.



11. New hardware wizard installs software and finish new hardware search wizard.



Setup72-10160 USB.inf under windows 2000

When 72-10160USB.inf file is not detected automatically, you see the following dialog box. In this case you must install 72-10160 USB.inf file manually.

1. Choose 'Search for a suitable driver for my device' button. Click Next to continue.
2. Specify a location. Click Next to continue.
3. The 72-10160 USB.inf file is located in CD-ROM root directory. Specify the location by either entering or browsing.
4. 72-10160 USB.inf file is detected automatically. Click Next to continue.
5. Click Finish.

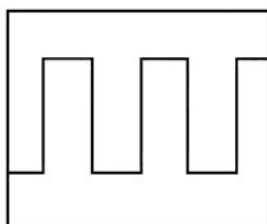
Probe Calibration

Calibration

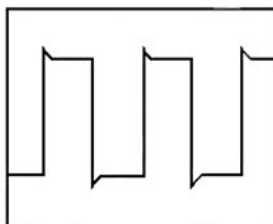
1. When manufactured, is calibrated manually to obtain maximum performance.
2. You may calibrate 5 or 6 months after purchase.

Probe Compensation

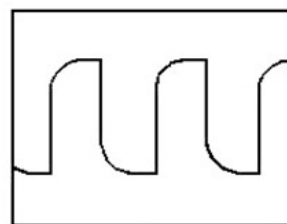
1. You must use a probe with more than 60MHz bandwidth to get undistorted signal.
2. Probe should be compensated whenever it is connected for the first time.
3. Connect calibration signal to channel 1, and then push AUTOSET.
4. Check the shape of the displayed waveform.
5. Adjust the probe until the displayed waveform is compensated.



Correctly Compensated



Over compensated



Under compensated