



EST. 1987
A4TECH

User Manual

Model: G7-540



www.a4tech.com

THIS DEVICE COMPLIES WITH PART 15 OF THE FCC RULES. OPERATION IS SUBJECT TO THE FOLLOWING TWO CONDITIONS: (1) THIS DEVICE MAY NOT CAUSE HARMFUL INTERFERENCE AND (2) THIS DEVICE MUST ACCEPT ANY INTERFERENCE RECEIVED, INCLUDING INTERFERENCE THAT MAY CAUSE UNDESIRE OPERATION.

Federal Communications Commission Requirements

The equipment has been tested and found to comply with the limits for Class B Digital Device, pursuant to part 15 of the FCC Rules. These limits are designed to provide reasonable protection against harmful interference in a residential installation. This equipment generates uses and can radiate radio frequency energy and, if not installed and used in accordance with the instruction, may cause harmful interference to radio communication. However, there is no guarantee that interference will not occur in a particular installation. If this equipment does cause harmful interference to radio or television reception, which can be determined by turning the equipment off and on, the user is encouraged to try to correct the interference by one or more of the following measures:

- Reorient or relocate the receiving antenna.
- Increase the separation between the equipment and receiver.
- Connect the equipment into an outlet on a circuit different from that to which the receiver is connected.
- Consult the dealer or an experienced radio/TV technician for help.

THE CHANGES OR MODIFICATIONS NOT EXPRESSLY APPROVED BY THE PARTY RESPONSIBLE FOR COMPLIANCE COULD VOID THE USER’S AUTHORITY TO OPERATE THE EQUIPMENT.

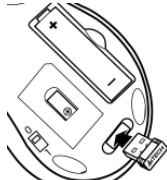

This device complies with Part 15 of the FCC Rules. Operation is subject to the following two conditions:

- (1) This device may not cause harmful interference, and
- (2) This device must accept any interference received, including interference that may cause undesired operation.

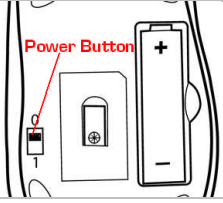
FCC Radiation Exposure Statement

The equipment complies with FCC radiation exposure limits set forth for uncontrolled equipment and meets the FCC radio frequency (RF) Exposure Guidelines in Supplement C to OET65. The equipment has very low levels of RF energy that it is deemed to comply without testing of specific absorption ratio (SAR).

Hardware Installation

<p>1. Pull out the nano-receiver from the bottom of mouse.</p> 	<p>2. Plug nano-receiver into USB port of your computer or notebook.</p> 
<p>3. Insert the supplied battery, make sure that the positive (+) and negative (-) ends of the battery match the polarity indicators inside the battery housing.</p>	

Power Management of the Mouse

<p>1. To power on the mouse, switch the power button to “1” position.</p>	
<p>2. To turn off the mouse power, switch the power button to “0” position.</p>	
<p>Note: The mouse can be activated from sleeping mode easily by moving it around.</p>	




The wireless mouse is plug-and-play. No driver is required. If you would like to get more function, please download software in our website: www.a4tech.com.

Mouse Button Identification



The “Gesture Button” can be set to various functions in using our 16 in 1 software.

Software Installation

1. Before installing the mouse software, please uninstall any previously installed mouse software.
2. Extract the ZIP file to your local disk and double click  to start installation.
3. Follow on-screen instructions to complete the installation.
4. The icon  will appear on your desktop, then you have successfully installed the software.
5. To launch the software, double click the icon  on your desktop or go to Start—Programs—16 in 1, then the icon will appear in the taskbar at the right corner of your screen.



Software Instructions

A. Illustration of the main menu

1. When selecting 16 in one, “Gesture Button” will execute 16 in one function. From the “task pull-down” menu of each arrow direction, you can select “keyboard, mouse, office sets, key combinations, multimedia and internet” 6 main function categories and there are more than 30 different functions that are ready for your immediate selection.





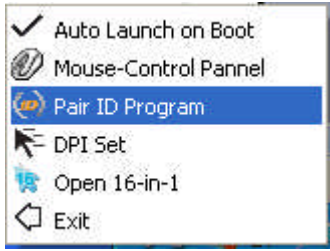
Task Pull-down

2. When selecting 2x Click, simply one click on “Gesture Button” will directly open files and programs.

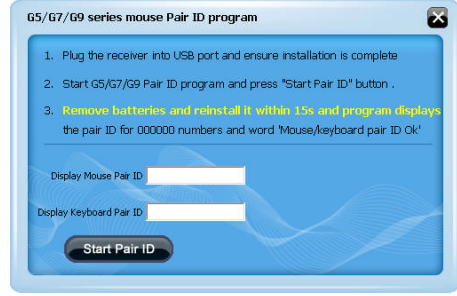
B. How to Pair the X-Far Wireless Devices

The G5/G7/G9 mouse series have been preset the ID Code in the factory. But under the circumstances you lose receiver or want to use with the other receiver in the same product series, you need to refresh the ID Code before using it.

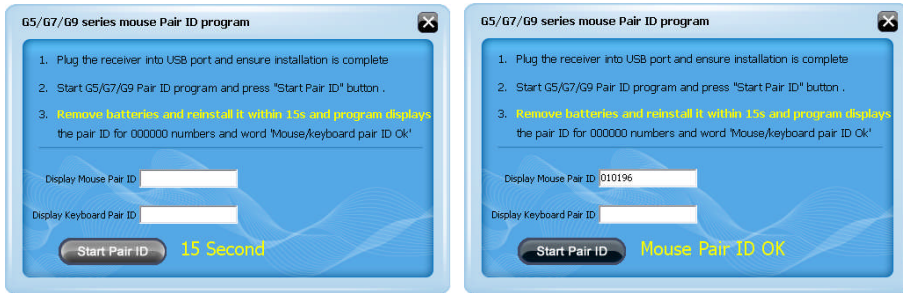
Step 1: Right click on the icon  in the taskbar  and select "Pair ID Program"




Step 2: Press "Start Pair ID" to refresh ID Code.



Step 3: Remove the mouse batteries and insert again in 15 seconds, 6 digits of matching code will be displayed on the menu as shown "Mouse Pair ID OK".



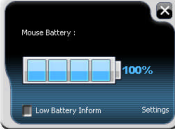
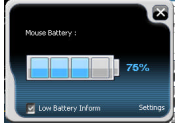
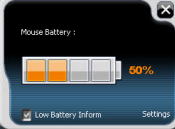
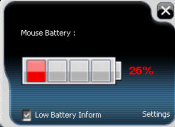
C. How to Indicate Battery Status

All of G7 series have Battery status Indicator in the software, click  in the main menu of the software, then the battery power status will be displayed on the screen. It is convenient that you can easily be aware when the battery power is low and change battery in time.



Smart Mouse Battery Low Warning

When the mouse power is low, Figure. A will pop up in the right corner of your screen to remind you to replace the battery right away.

Mouse Battery Low Warning	Mouse Working Voltage	Display
100%	1.2V and Above	
75%	1.12~1.19V	
50%	1.06V~1.11V	
25%	1.0~1.05V	

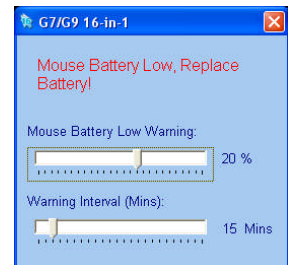
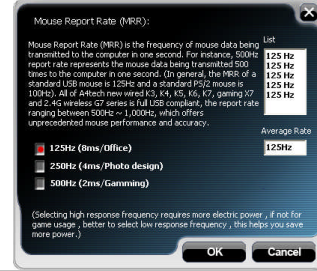


Figure. A

D. Three Shiftable Report Rates



There are 3 report rates can be preset for high sensitive response time of 2/4/8 milliseconds, it improves cursor delay and jumping problems of wireless mouse, saves power in working and increases accuracy when playing the games.

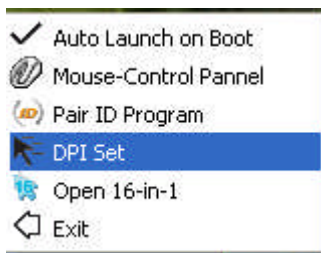
Mouse Report Rate	Response Time	Suitable Range
500Hz	2ms	Gaming
250Hz	4ms	Office
125Hz	8ms	Office



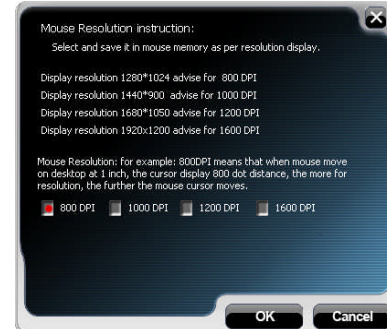
E. DPI Setting

There are 4 DPI levels are provided to satisfy your needs for works and games.

Step 1: Right click on the icon  in the taskbar  and select "DPI Set"



Step 2: Choose the desired DPI from below popped window.



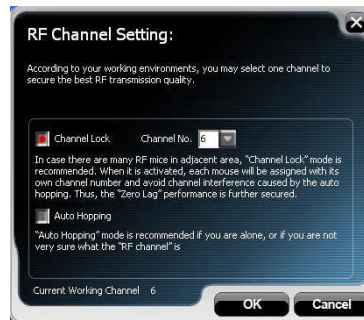
F. Set RF Channel to Avoid Wireless Interference

In case there are many wireless mice working in the adjacent area, you may set a specific channel so as to avoid wireless interface, hence ensures better wireless communication quality.

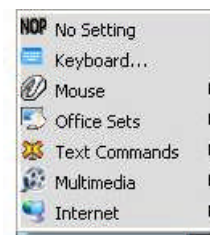
Step 1: Right click on the icon  in the taskbar  and select "RF Channel Setting"





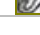
Step 2: Tick "Channel Lock" and distribute each mouse a different channel.

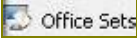
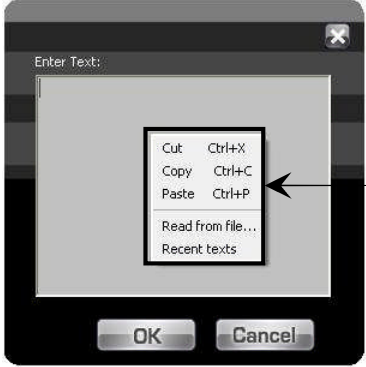


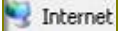


How to use 16 in 1



After launching 16 in 1, click on , then you will see a list of different functions.

Preset Functions	Available tasks
 No Setting	System default or no function is selected
 Keyboard.	Any key or any collective key on the keyboard
 Mouse	4th Button, 5th Button, Scroll Up, Scroll Down, Scroll Left, Scroll Right.

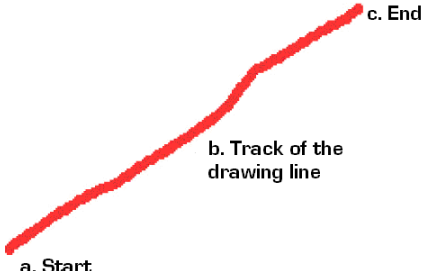
	<p>Zoom In & Zoom Out, Paste Text, Execute Program. Note: If the "Paste Text" of the "Office Sets" is selected, the "Figure. A" will pop up as shown; you may input texts to paste.</p> <div data-bbox="651 219 1018 584" style="text-align: center;">  </div> <p style="text-align: center;">Fig. A</p>
	<p>New File (Ctrl+N), Open File (Ctrl+O), Save File (Ctrl+S), Redo (Ctrl+Y), Undo (Ctrl+Z).</p>
	<p>Media Player, Previous Track, Next track, Stop, Play/Pause, Mute, Volume+, Volume -.</p>
	<p>Back, Forward, Stop, Search, Refresh, My Favorite, Web Browser, IE-mail</p>

Now let's take "↗" as example to show you clearly on how to use these functions:


1. select "↗" icon to represent "Zoom In" as shown:  

2. Press "OK" to save settings.

3. Draw the line in Excel & Windows Picture and Fax Viewer.



a. **Start:** Press the "Gesture Button"

b. **Track of the drawing line:** Draw the lines as the  arrow direction.

c. **End:** Release the "Gesture Button"

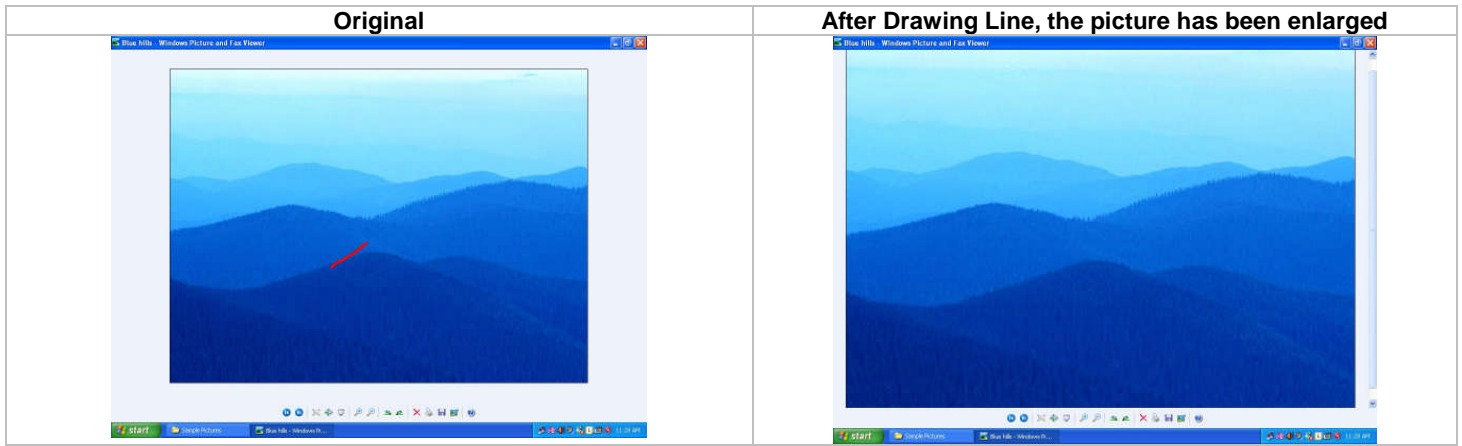
Reminder: If step b is omitted, it will perform as "Gesture Button" default function.

d. Then the picture has been zoomed in accordance to the magnitude of the line length.

4. See the contrast after drawing the line.
Excel:

Original				After Drawing Line, the column has been enlarged			
	A	B	C		A	B	C
1				1			
2				2			
3		Hello		3		Hello	
4				4			
5				5			
6				6			

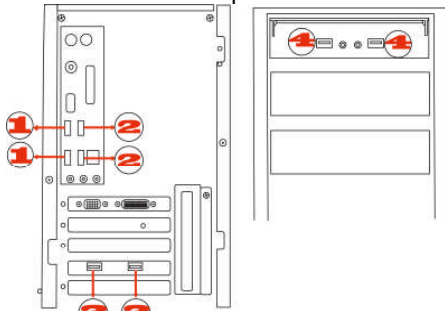
Windows Picture and Fax Viewer:



Notice:

To ensure that your mouse and keyboard send and receive perfectly, please read below instructions for your reference:

1. Interference from iron panel of PC.



To get optimal performance, please plug the Nano-receiver into ③、④ to avoid shielding wireless signal when placing at ①、②.

①②③④ USB Ports

2. Use USB extension wire to position the Nano-receiver at a far location to prevent electromagnetism interference from devices which don't pass safety standard.
3. Avoid using the wireless mouse on a metal surface. Metals such as iron, aluminum, or copper shield the radio frequency transmission and slow down the mouse's response time or cause the mouse to fail temporarily. The radio frequency is 2.4HZ, it is safe for our bodies, but please be cautious in using cardiac pacemaker or other body auxiliary instruments.

Troubleshooting

If the mouse is not working:

1. Make sure the mouse is on.
2. Check battery and battery installation.
3. Check receiver installation.
4. Try another USB port.

Product Support

Need help with technical support? Please go to:

<http://www.a4tech.com/ennew/support.asp> and our support team will respond within 72 hours.

**Features and specifications of all A4 TECH products are subject to change without notification.