



ColorBurst® RIP

A PostScript® Language Level 3 compatible RIP

for the Epson Stylus® Pro 4000

User's Guide

All rights reserved. No part of this publication may be reproduced, stored in a retrieval system, or transmitted in any form or by any means, electronic, mechanical, photocopying, recording, or otherwise, without the prior written permission of Seiko Epson Corporation. The information contained herein is designed only for use with this Epson product. Epson is not responsible for any use of this information as applied to other products.

Trademarks

Epson, Epson Stylus, and MicroWeave are registered trademarks of Seiko Epson Corporation.

Epson Preferred is a service mark of Epson America, Inc.

ColorBurst is a registered trademark of CSE Systems, Inc.

General Notice: Other product names used herein are for identification purposes only and may be trademarks of their respective owners. Epson disclaims any and all rights in those marks.

Legal Notices

Neither Seiko Epson Corporation nor its affiliates shall be liable to the purchaser of this product or third parties for damages, losses, costs, or expenses incurred by purchaser or third parties as a result of: accident, misuse, or abuse of this product or unauthorized modifications, repairs, or alterations to this product, or (excluding the U.S.) failure to strictly comply with Seiko Epson Corporation's operating and maintenance instructions.



Printed on recycled paper.

Contents

Introduction

Choosing a RIP Configuration	5
ColorBurst RIP Features	5

Installing and Setting Up the Server Software

Installing the ColorBurst Server Software for Macintosh OS X	7
Setting Up the ColorBurst RIP Server for Macintosh OS X	8
Installing the ColorBurst RIP Server Software for Windows	15
Setting Up the ColorBurst RIP Server for Windows	17

Setting Up Client Systems

Setting Up Macintosh OS X Clients to Print to a Mac OS X RIP Server	21
Setting Up Windows Clients to Print to a Mac OS X RIP Server	24
Setting Up Windows Clients to Print to a Windows RIP Server	30

Printing

Printing From an Application	33
Printing Using a Hot Folder	34
Drag-and-Drop Printing on the RIP Server (Mac OS X)	38
Supported File Types	38

Managing Print Jobs on the Mac OS X RIP Server

Holding, Activating, Canceling, and Deleting Jobs	39
Changing File Attributes	40
Reordering Print Jobs	41
Reprinting Files In the Done List	42

Color Management and Printer Linearization

Using Color Management Settings in Mac OS X	43
Using Color Management Settings in Windows	47
Relinearizing an Existing Printer Setup	51

Appendix

Where To Get Help 59

System Requirements 59

Index

Introduction

Note: If you are using Windows,[®] you must be running Windows XP or 2000; other versions of Windows are not supported.

Tip: The recommended configuration is to connect the Stylus Pro 4000 via USB to a Mac OS[®] X system set up as the dedicated server with the ColorBurst RIP. Then connect the Mac OS X system to the network. Mac[®] or Windows clients may print to the RIP server. This configuration minimizes network traffic.

Note: The Client PPD does not need to be installed on the ColorBurst RIP server.

This *User's Guide* provides instructions for installing and setting up the ColorBurst[®] RIP (Raster Image Processor) software on your server and client workstations. The software prepares your network for printing on the Epson Stylus[®] Pro 4000 printer. This guide also explains environment setup and printer linearization, printing from applications, and using hot folders for drag-and-drop printing of supported files.

Your ColorBurst software CD-ROM includes the ColorBurst server software and client PPD (PostScript[®] Printer Description) software, as well as the ChromaCapture CSE (Macintosh[®]) or ColorBurst ColorCatch (Windows) utility for printer linearization.

Before setting up the ColorBurst RIP, you should make sure you've set up the Stylus Pro 4000 on the computer that will control the printer. Even if you plan to connect the printer directly to the network, you should install and configure it locally first. See your Stylus Pro 4000 *Start Here* sheet for instructions.

Choosing a RIP Configuration

There are a number of options available for setting up the ColorBurst RIP and your Stylus Pro 4000:

- Connect the printer via USB or Ethernet to a Macintosh OS X or Windows computer with ColorBurst installed. That system acts as the RIP server on the network. You can print from that computer or send print jobs from other computers on your network. If you have both Mac OS X and Windows client systems, you must install the ColorBurst RIP server software on a Macintosh.
- Connect the printer via USB or Ethernet to a single computer set up as the ColorBurst RIP server and client.

ColorBurst RIP Features

- Pantone[®] and SWOP[®] certified for highly accurate color printing
- Full PostScript support including PostScript Language level 1, 2, and 3 support for PS, EPS, TIFF, JPEG, and PDF files
- Hot folder that can be accessed locally or over a network for easy printing of supported file types

- Job manager (Mac OS X only) for drag-and-drop printing directly into the RIP list. Jobs can be reordered, deleted, or placed on hold to be processed later
- Pre-linearized environments to ensure accurate profiles from the start, as well as the option to relinearize later with a spectrophotometer, if necessary

Installing and Setting Up the Server Software

You can install and set up the ColorBurst RIP server software on a Macintosh OS X system or a computer running Windows XP or 2000. See the appropriate sections:

- “Installing the ColorBurst Server Software for Macintosh OS X” below
- “Setting Up the ColorBurst RIP Server for Macintosh OS X” on page 8
- “Installing the ColorBurst RIP Server Software for Windows” on page 15
- “Setting Up the ColorBurst RIP Server for Windows” on page 17

Installing the ColorBurst Server Software for Macintosh OS X

Before you begin, make sure you have:

- Set up the Epson Stylus Pro 4000 and installed the standard Epson printer driver on the computer you intend to use as your ColorBurst RIP server (see your Epson® printer documentation for instructions)
- Connected the printer to the server using the USB interface (recommended method) or connected the printer to an Ethernet network and assigned it an IP address (see the documentation that came with the included network card)
- Closed all open programs and turned off any virus protection programs

Follow these steps to install the server software:

1. Insert the *ColorBurst RIP* CD-ROM in your CD-ROM or DVD drive.
2. Double-click the CD-ROM icon, then double-click the ColorBurst RIP Installer icon.



ColorBurst RIP Installer

3. When prompted, enter your Mac OS X Admin password and click OK.



4. Follow the on-screen instructions to install ColorBurst.
5. When installation is complete, go to the next section to set up the ColorBurst RIP Server.

Setting Up the ColorBurst RIP Server for Macintosh OS X

Note: If you plan to share the printer with Windows clients over a network, you need to make sure your Macintosh has a static (manual setting) IP address that won't change. You can change this setting in the **System Preferences > Network** settings. See your Mac Help for more information.

Before you can print with the ColorBurst RIP, you have to set it up so it can receive print jobs and has the correct printer and environment settings.

Starting the RIP Server and Choosing Your Printer

1. To start the RIP server, double-click the ColorBurst RIP for Epson icon on your desktop.

Or double-click the ColorBurst RIP icon in the Applications > ColorBurst RIP for Epson folder.



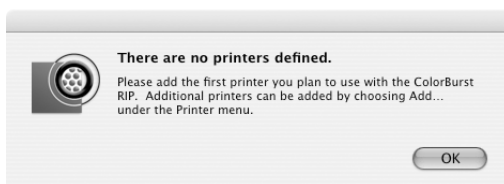
2. When you see the registration window, fill out the information and click OK to register your software. The serial number is printed on the front of your ColorBurst RIP CD-ROM.

The registration is sent over the Internet to ColorBurst. If it isn't sent, the dialog box will reappear each time you start the RIP.

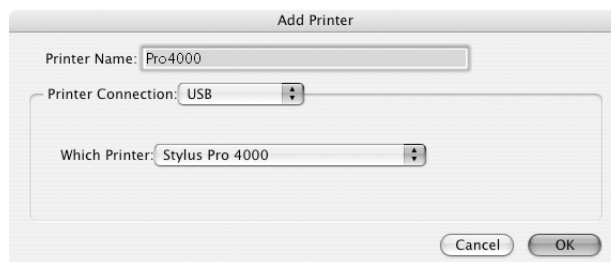
3. When you see this message, click OK.



4. When you see this message, click OK.



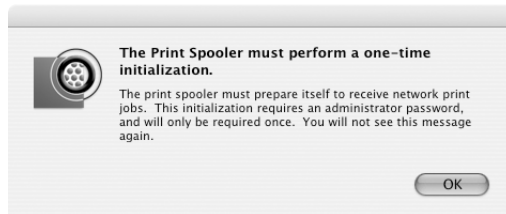
5. Type a name for the printer in the Printer Name box. It can be any name you want. This name is used only within the RIP/server interface and is not the name that will be used on the network. (See “Setting the Print Server Name” on page 13 to change the RIP name used on the network.)



6. Choose **USB** or **Ethernet** as the Printer Connection setting.
7. Choose **Stylus Pro 4000** from the Which Printer list that appears, if necessary.

If you see the message “There are no printers connected to this computer using USB,” check your USB connection and make sure the printer is set up and turned on as described on your Stylus Pro 4000 *Start Here* sheet.

8. When you see this message, click OK.



9. When you see this screen, enter your Mac OS X Admin password, then click OK.



ColorBurst opens and is now set up with the default environment. To enable the RIP to receive and process print jobs and set up the proper environment for your needs, see the next section.

Choosing an Environment and Printer Settings

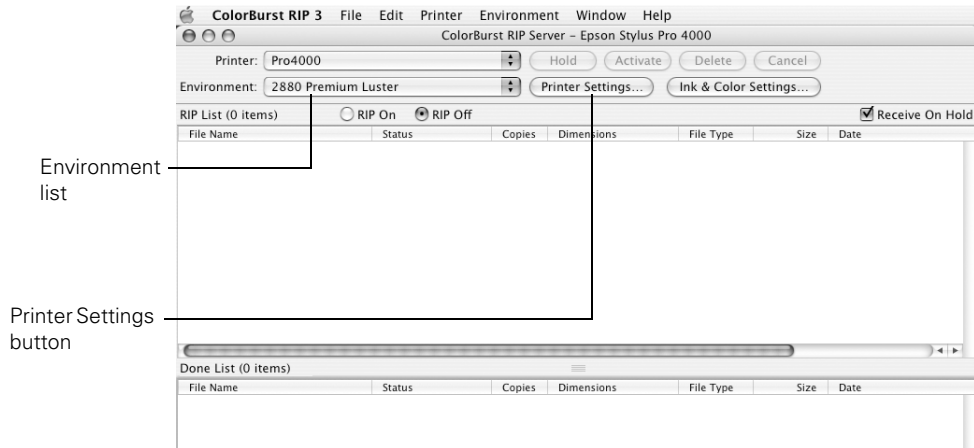
The ColorBurst workflow is designed to be efficient for graphic design as well as prepress proofing. Several pre-set environments with defined paper type and resolution settings are included for your Stylus Pro 4000 printer. Choose an environment for the paper type that is loaded in the printer and the resolution you prefer for printing. You need to change the environment each time you load a different type of paper. Also check the printer settings and adjust them, if necessary. Once the environment and settings are set up, clients can send print jobs without having to constantly adjust printer and driver settings.

1. To start the RIP server, double-click the ColorBurst RIP for Epson icon on your desktop.

Or double-click the ColorBurst RIP icon in the Applications > ColorBurst RIP for Epson folder.

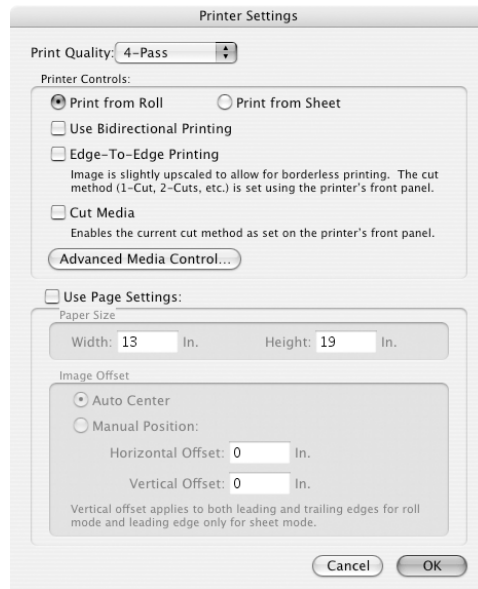


You see the ColorBurst RIP server window:



2. Choose the resolution and paper type you want to use from the Environment list.

3. Click **Printer Settings** to open the Printer Settings window.



4. Make changes to these settings, as necessary:
 - Choose **4-Pass** for the Print Quality (when available). If you notice any type of banding, then try **8-Pass**. If you still see banding in 8-Pass mode, perform a nozzle check on the Stylus Pro 4000 (see your Stylus Pro 4000 *Printer Guide* for details).
 - Choose **Print from Roll** or **Print from Sheet**, depending on the paper source you are using
 - Choose **Use Bidirectional Printing** to print in both directions (turn this off for best quality)
 - Choose **Edge-To-Edge Printing** to allow borderless printing
 - Choose **Cut Media** to allow the printer to use the printer's cut method to cut roll paper
 - Click **Advanced Media Control** to adjust the setting for precise paper feeding
 - Click **Use Page Settings** to set paper width and height settings, to center the image on the page, or offset it by a specific distance

Note: The **Use Page Settings** options are only used for files with unknown page description information, such as when you drop a TIFF or JPEG file into a hot folder.

5. Click OK. You return to the ColorBurst RIP server window.

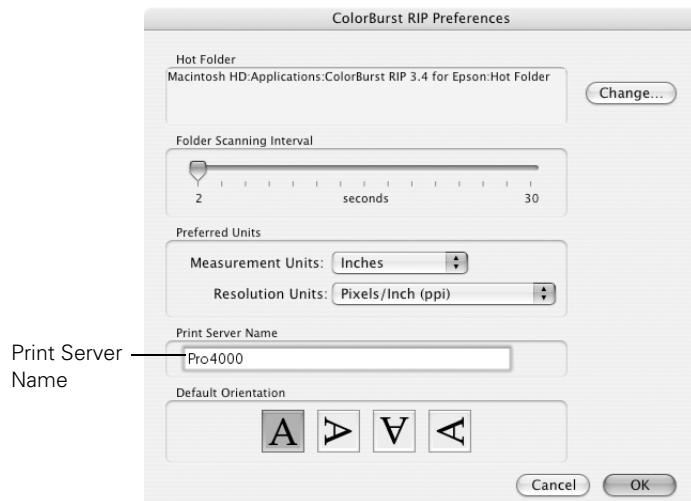
Continue with the next section to set a Print Server Name.

Setting the Print Server Name

Note: For Windows clients, you also need to know the IP address of the computer that is running the ColorBurst RIP. The IP address should be static (manual setting) and can be found under the **System Preferences > Network** settings.

Before you set up any client computers to print to the RIP, you should check the Print Server Name and change it, if desired. You need to know the Print Server Name to set up Windows clients to print to the ColorBurst RIP.

1. Choose **Preferences** from the ColorBurst RIP menu. You see this menu:



2. Write down the Print Server Name that appears in the box (the default is ColorBurst_RIP), or change it to something else to identify the printer over the network.
3. When you are done, click OK.

Enabling the RIP to Receive Print Jobs and Print

By default, the ColorBurst RIP receives and holds print jobs until it is set to RIP On and the print jobs are activated. You can change this setting to automatically receive and print jobs as they are sent to the RIP.

1. To start the RIP server, double-click the ColorBurst RIP for Epson icon on your desktop.

Or double-click the ColorBurst RIP icon in the Applications > ColorBurst RIP for Epson folder.



You see the ColorBurst RIP server window:



2. To enable the RIP to print active jobs, click the RIP On button.
3. To receive print jobs with active status and automatically print them in the order they are received, click the **Receive On Hold** checkbox to deselect it. If you keep it selected, all the print jobs that are sent to the RIP will be held until you activate them.

If you will be printing from other computers on the network, install the client PPDs and set up the clients for printing. See “Setting Up Client Systems” on page 21.

For details on managing print jobs, see page 39.

Installing the ColorBurst RIP Server Software for Windows

Note: The Windows RIP server software supports printing from Windows XP and Windows 2000 client computers only. To print with both Macintosh and Windows clients, you must install the RIP server software on a Macintosh server. See page 7.

Before you begin, make sure you have:

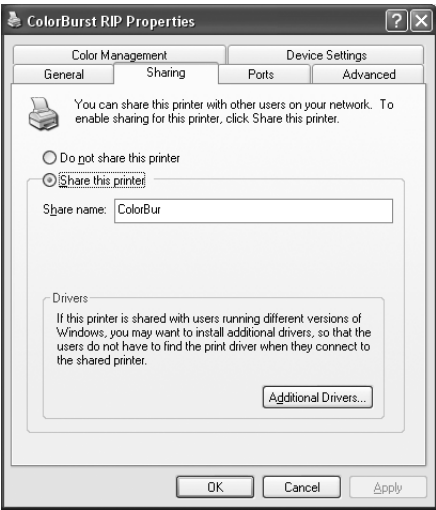
- Set up the Epson Stylus Pro 4000 and installed the standard Epson printer driver on the computer you intend to use as your ColorBurst RIP server (see your Epson printer documentation for instructions)
- Connected the printer to the server using the USB interface (recommended method) or connected the printer to an Ethernet network and assigned it an IP address (see the documentation that came with the included network card) and that you are able to print from the standard driver
- Closed all open programs and turned off any virus protection programs

Follow these steps to install the server software:

1. Insert the *ColorBurst RIP* CD-ROM into your drive.
2. Double-click the **ColorBurst Epson Installer** icon.
3. Follow the on-screen instructions to install the ColorBurst RIP.
4. When you see the message “Digital Signature Not Found,” click **Yes** to continue the installation.
5. Restart your computer.
6. Go to **Start > Settings > Printers** (or **Start > Printers and Faxes**).
7. Right-click the ColorBurst RIP printer icon and choose **Properties**.



8. Click the **Sharing** tab.



9. Select **Share this printer**. Click **OK**.

Go to the next section to start and set up the ColorBurst RIP server.

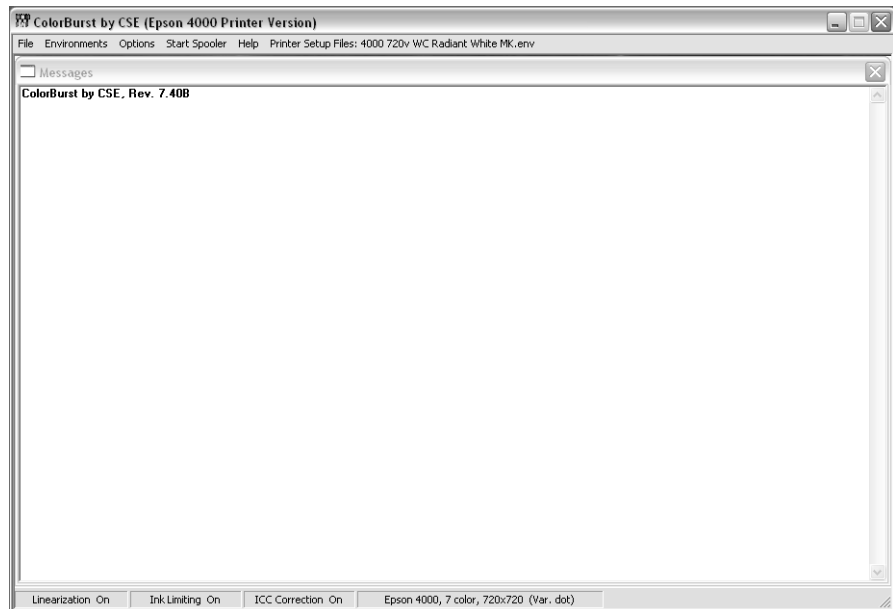
Setting Up the ColorBurst RIP Server for Windows

1. To start the RIP server, double-click the ColorBurst Epson icon on your desktop.
2. When you see the Registration screen, fill out the information and click OK to register your software. The serial number is printed on the front of the ColorBurst RIP CD-ROM.

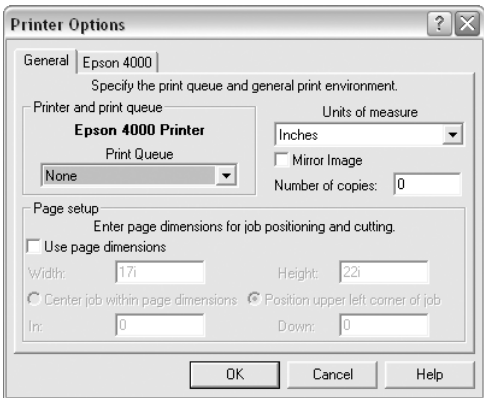


ColorBurst Epson

You see the ColorBurst RIP server window:

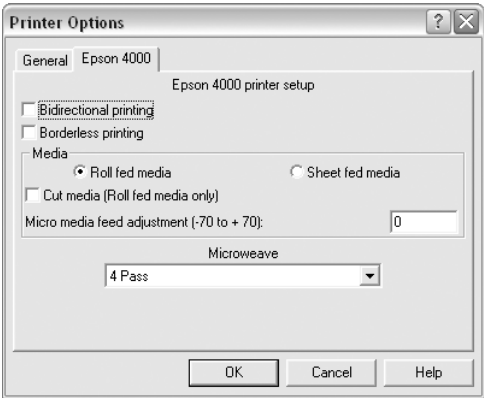


3. From the Options menu, choose **Printer Options**, then click the **General** tab.



4. Under **Print Queue**, choose **EPSON Stylus Pro 4000**.
5. Click **Use page dimensions** to set paper width and height settings, to center the image on the page, or offset it by a specific distance.
6. Click the **Epson 4000** tab.

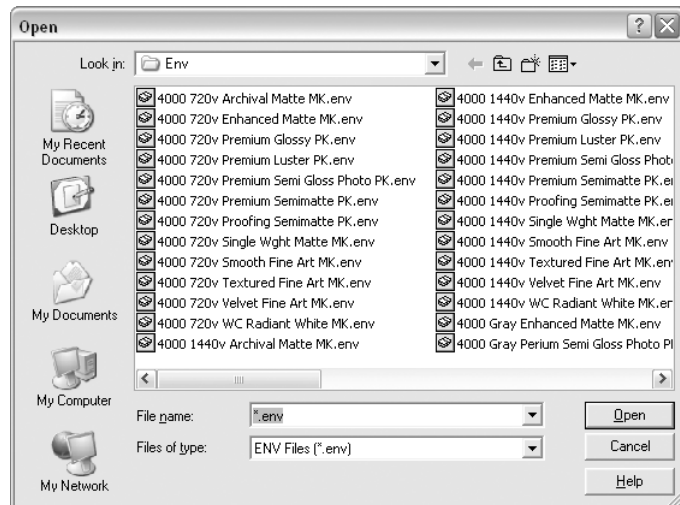
Note: The **Use page dimensions** options are only used for files with unknown page description information, such as when you drop a TIFF or JPEG file into a hot folder. If you are printing from an application, your print settings will override these settings.



Make changes to these settings, as necessary:

- Choose **4 Pass** for the MicroWeave® setting. If you notice any type of banding, then try **8 Pass**. If you still see banding in 8 Pass mode, perform a nozzle check (see your Stylus Pro 4000 *Printer Guide* for details).

- Choose **Roll fed media** or **Sheet fed media**, depending on the paper source you are using
 - Choose **Borderless printing** to allow edge-to-edge printing
 - Choose **Bidirectional Printing** to print in both directions (turn this off for best quality)
 - Choose **Cut media** to allow the printer to use the printer's cut method to cut roll paper
 - Enter a value in the **Micro media feed adjustment** box if you need to adjust the setting for precise paper feeding
7. Click **OK**.
 8. From the **Environment** menu, click **Load**.
 9. Open the **Color** or **Grayscale** folder, then choose the environment file for your paper type and resolution.



10. Click **Open**, then click **Yes**.
11. Click **Start Spooler** to start the RIP.

Setting Up Client Systems

Note: To print with both Macintosh and Windows clients, you must install the RIP server software on a Macintosh server. See page 7.

Note: You can also find the PPD installer in the **ColorBurst RIP for Epson > Utilities** folder on the server. Copy the file to the system where you want to install it, then double-click the installer icon.

See the appropriate section to set up client systems for printing:

- “Setting Up Macintosh OS X Clients to Print to a Mac OS X RIP Server” below
- “Setting Up Windows Clients to Print to a Mac OS X RIP Server” on page 24
- “Setting Up Windows Clients to Print to a Windows RIP Server” on page 30

Setting Up Macintosh OS X Clients to Print to a Mac OS X RIP Server

1. Make sure your computer is connected to the same network as the ColorBurst RIP server computer.
2. Insert the *ColorBurst RIP* CD-ROM in the CD-ROM or DVD drive.
3. Double-click the CD-ROM icon, then double-click the **ColorBurst Client Installer** icon.
4. When you see this screen, enter your Mac OS X Admin password, then click OK.



ColorBurst Client Installer

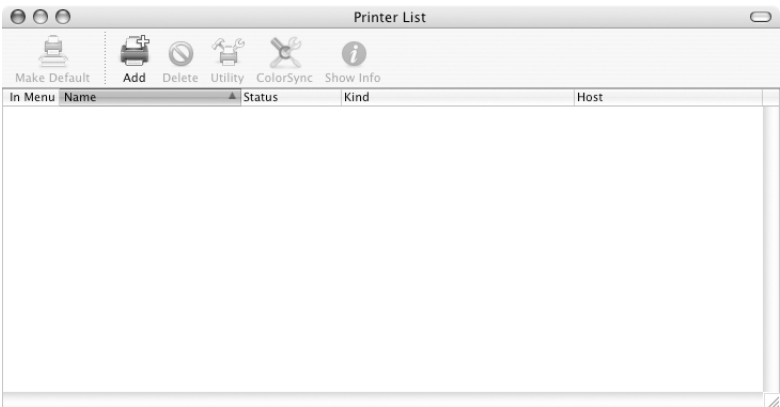


5. Follow the on-screen instructions to install the ColorBurst client software.
6. When installation is complete, check the ColorBurst RIP server computer to make sure ColorBurst is running.

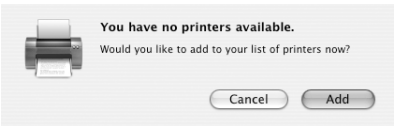
7. Open the Mac OS X **Print Center** (OS X 10.2.x) or **Printer Setup Utility** (OS X 10.3.x) in the **Applications > Utilities** folder.



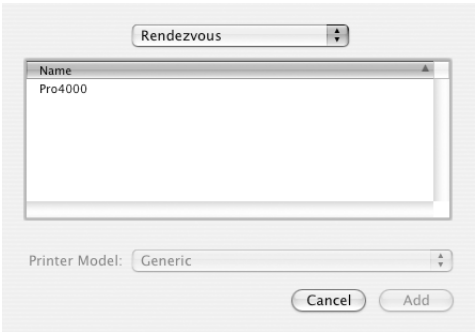
8. Click the **Add** button to add a printer.



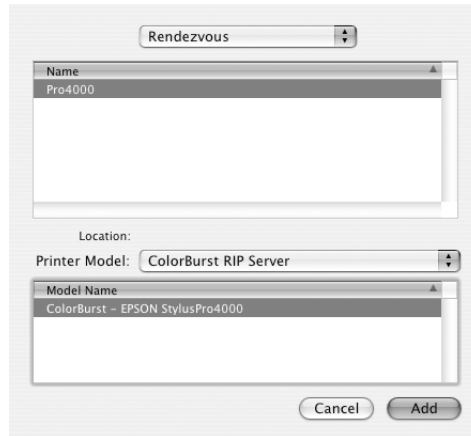
You may see this message if you have not installed any printers on your computer. Click **Add**.



9. On the next screen, select **Rendezvous** from the pop-up menu.

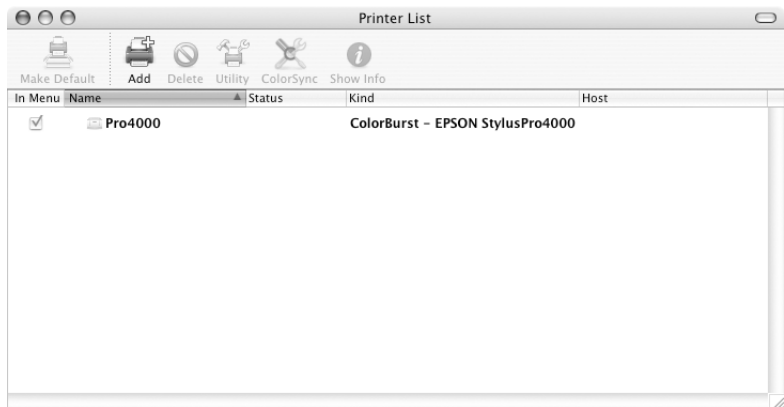


10. Select the ColorBurst RIP print server name that you specified (see “Setting the Print Server Name” on page 13) from the list of Rendezvous printers.



11. Select **ColorBurst RIP Server** from the Printer Model list.
12. Highlight **ColorBurst - EPSON StylusPro4000**.
13. Click **Add** to add the printer.

You see the ColorBurst RIP Print Server name in the printer list.




14. Close Print Center or the Printer Setup Utility. You're ready to print to the ColorBurst RIP.

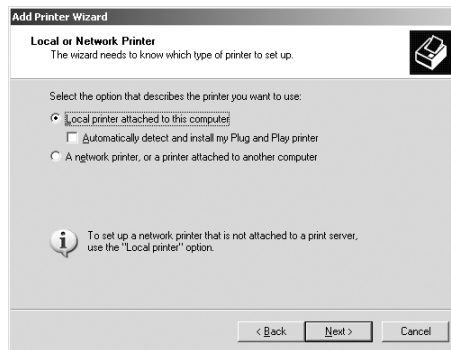
Setting Up Windows Clients to Print to a Mac OS X RIP Server

ColorBurst supports Windows 2000 and Windows XP. Other Windows operating systems are not supported.

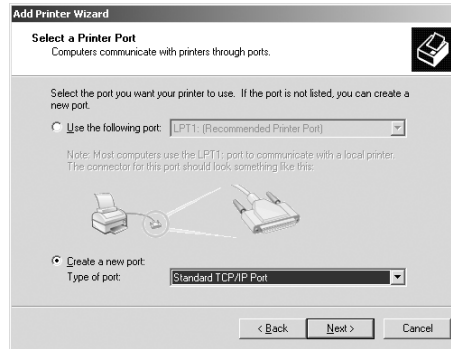
1. Make sure your computer is connected to the same network as the ColorBurst RIP server computer.
2. Insert the *ColorBurst RIP* CD-ROM into the CD-ROM or DVD drive.
3. Windows 2000: Click **Start > Settings > Printers**.

Windows XP: Click **Start > Control Panel > Printers and Other Hardware > Printers and Faxes**.

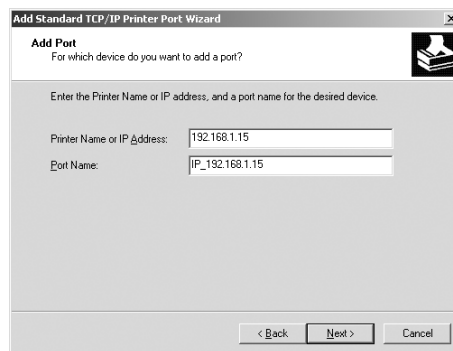
4. Double-click the  **Add Printer** icon, then click **Next**.
5. The following screen appears. Make sure the **Local printer attached to this computer** button is selected and **Automatically detect and install my Plug and Play printer** is unchecked. Then click **Next**.



6. Click **Create a new port**, select **Standard TCP/IP Port**, and click **Next**.



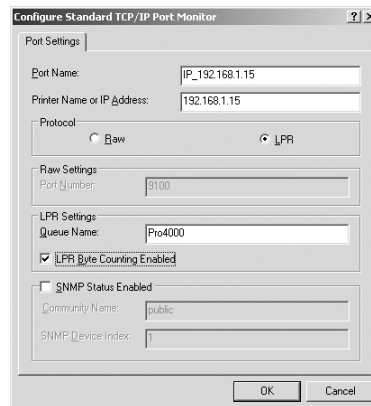
7. When you see the Add Standard TCP/IP Print Port Wizard screen, click **Next**.
8. Enter the IP address for the Macintosh with the ColorBurst RIP server (located under **System Preferences > Network settings**), then click **Next**.



9. Select Custom and click the Settings button.



10. You see this screen:



Select the following settings:

- Protocol: LPR
- Queue Name: enter the ColorBurst Print Server Name (case-sensitive; found in the ColorBurst RIP Preferences window; see “Setting the Print Server Name” on page 13)
- Select the LPR Byte Counting Enabled checkbox

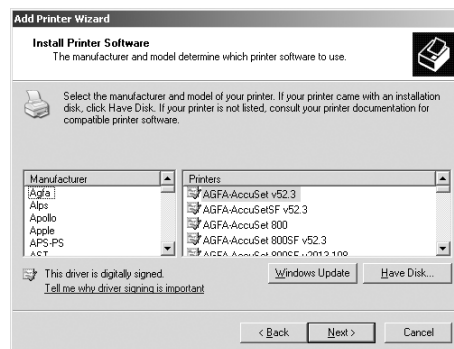
11. Click OK.

12. Click Next.

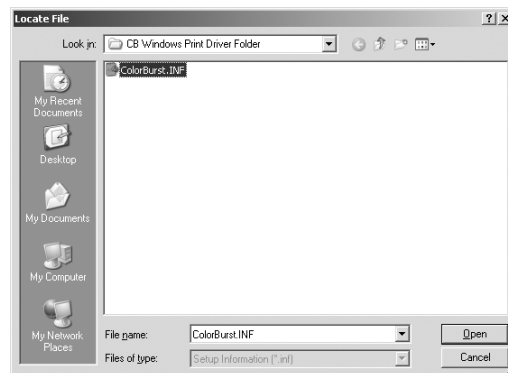
13. Click **Finish** to close the Add Standard TCP/IP Printer Port Wizard.



14. At the next screen, click **Have Disk**, then click **Browse**.

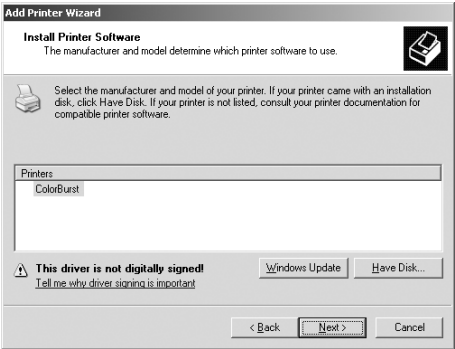


15. Browse to the **Utilities** folder on the CD-ROM. Click **ColorBurst.INF**.

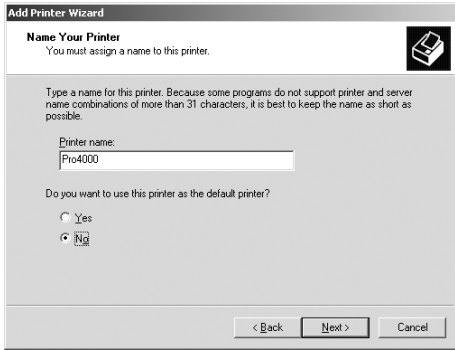


16. Click **Open** to return to the Install from Disk window.

- 17. Click OK.
- 18. Select ColorBurst, then click Next.

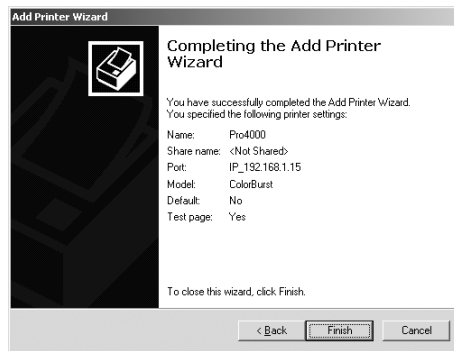


- 19. Leave the default name or enter a new name for the Stylus Pro 4000 in the Printer name box. Then click Next.




- 20. Follow the on-screen instructions to install the software.

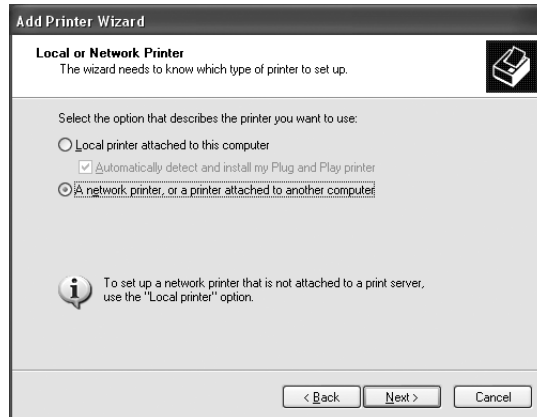
21. At the end of the installation, click **Finish**.



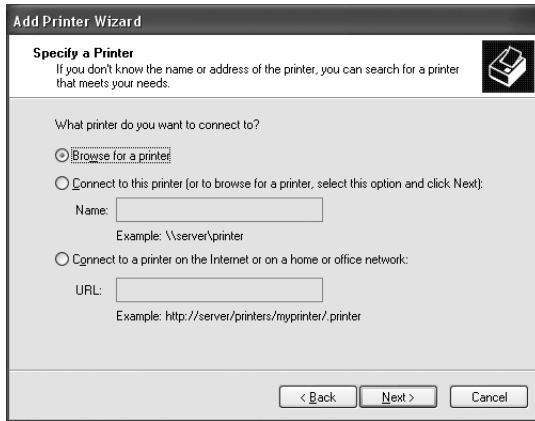
22. Restart your computer. You are ready to print.

Setting Up Windows Clients to Print to a Windows RIP Server

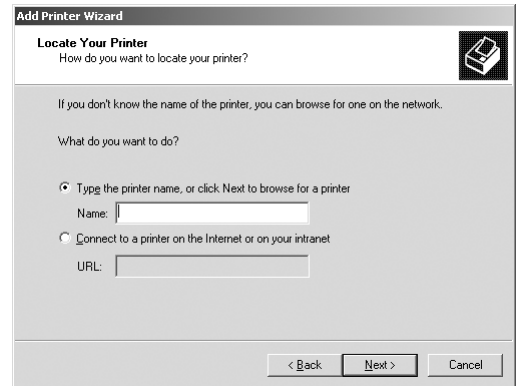
1. Make sure the network is set up and the ColorBurst RIP is running.
2. Windows 2000: Click Start > Settings > Printers.
Windows XP: Click Start > Control Panel > Printers and Other Hardware > Printers and Faxes.
3. Double-click the  Add Printer icon, then click Next.
4. The following screen appears. Make sure the Network printer button is selected. Then click Next.



5. Select **Type your printer name (Windows 2000)** or **Browse for a printer (Windows XP)** and click **Next**.

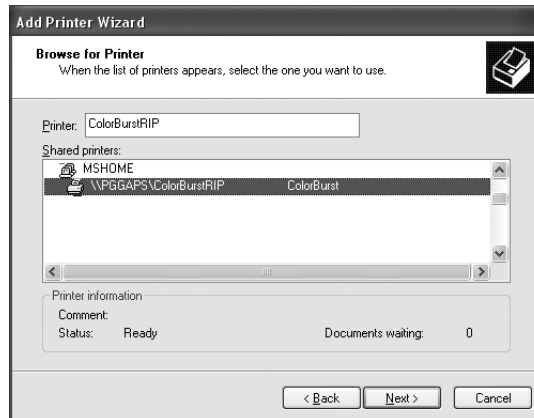


Windows XP



Windows 2000

6. Browse the network and select the **ColorBurst RIP** printer, then click **Next** and click **Yes** to continue.



7. If you want to use the ColorBurst RIP as your default printer, choose **Yes**. If not, choose **No**. Click **Next**.



8. Click **Finish** when you see a screen telling you that setup is complete.
The ColorBurst RIP is added as a printer on your computer.

Printing

When printing over a network, you can print to the ColorBurst RIP from applications (see below) or you can place image files directly into a shared hot folder (page 34).

On the ColorBurst RIP server computer, you can print from applications (see below), place image files into a hot folder (page 34), or drag image files directly to the RIP List in the ColorBurst window (page 38).

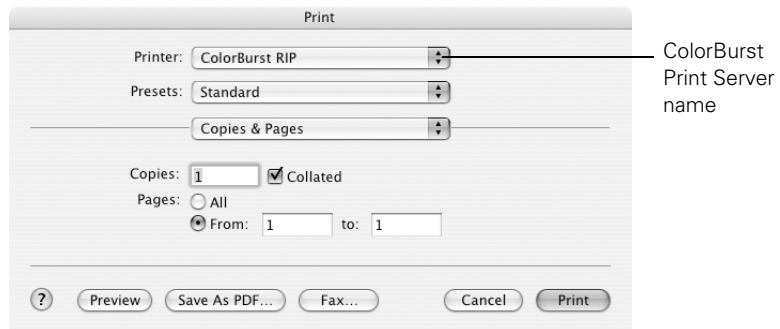
Printing From an Application

Note: If you are using Adobe® Photoshop®, QuarkXPress®, or Adobe InDesign®, see page 34 for specific settings you need to make in those applications.

To print with Mac OS X, see the section below. To print with Windows, see page 34.

Printing With Mac OS X

1. Choose File > Print. You see a screen like this:

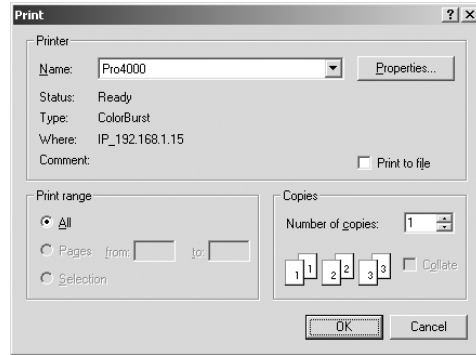


2. For Printer, choose the ColorBurst Print Server name.
3. Click Print to send your print job to the ColorBurst RIP.

Note: Since you have already defined the printer's settings and color management from within the ColorBurst RIP, you only need to review basic printer settings before sending your print job.

Printing With Windows

1. Choose File > Print. You see a screen like this:



2. Make sure the correct printer is selected.
3. Click OK to send your print job to the ColorBurst RIP.

Printing From Specific Applications

- Adobe Photoshop: Make sure color management is turned off (you can do this in the Photoshop > Color Settings or File > Color Settings menu). To print, choose Print with Preview from the File menu. Click Show More Options, then choose Output. Under Encoding, choose Binary. This will ensure predictable printing results.
- QuarkXPress: Select the ColorBurst.ppd file in the PPD manager. Do not use other PPDs when printing to ColorBurst.
- Adobe InDesign: Choose File > Page Setup and select the correct printer for the Printer setting.

Printing Using a Hot Folder

Hot folders create an easy and powerful method of printing to the Stylus Pro 4000.

If you are printing locally, you can turn any folder into a hot folder and simply copy the files you want to print to that folder. The ColorBurst RIP automatically checks the hot folder and prints the files.

If you are printing over a network, you need to make sure sharing is enabled on the server and on client systems, then set up the hot folder as your shared folder. See your network administrator for help with setting up sharing.

Setting Up a Hot Folder in Mac OS X

Follow these steps to set up a hot folder:

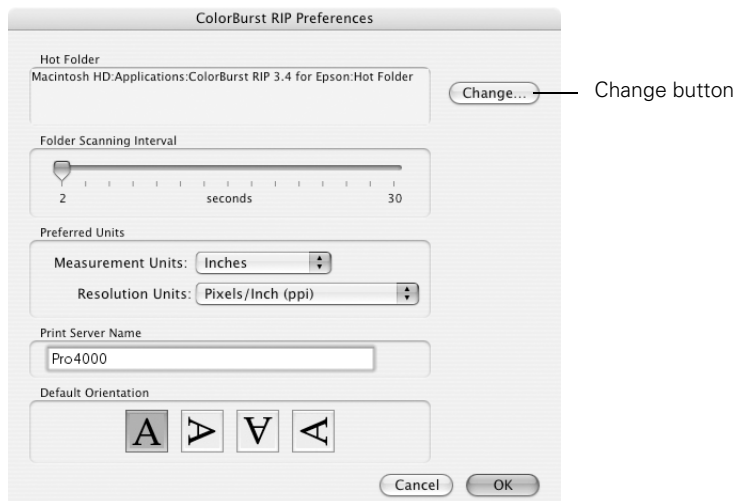
1. To start the RIP server, double-click the ColorBurst RIP for Epson icon on your desktop.

Or double-click the ColorBurst RIP icon in the Applications > ColorBurst RIP for Epson folder.



ColorBurst RIP

2. Choose Preferences from the ColorBurst RIP menu.



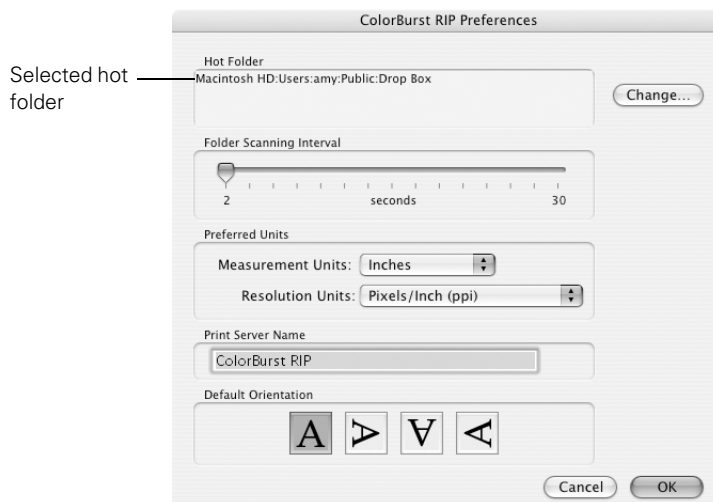
3. Click the Change button.

Note: Make sure you enable Personal File Sharing and Windows Sharing as necessary to share your Drop Box and hot folder with other users on the network. You can enable these options in the **System Preferences > Sharing** settings. See your Mac Help for detailed instructions.

4. Browse to the folder you want to use as the hot folder. If you are sharing the hot folder over a network, you should choose a shared folder, such as the **Drop Box** in the current user's **Public** folder, as shown below.



5. Select the folder and click **Choose**.
6. Verify that the correct hot folder is selected.

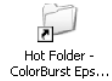


7. If you want to adjust how often ColorBurst checks the hot folder, move the Folder Scanning Interval slider. You can set the interval from 2 to 30 seconds (in 2-second intervals).

8. Click OK to close the Preferences window.

Setting Up a Hot Folder in Windows

In Windows, the Hot Folder - ColorBurst Epson RIP folder is installed on your desktop when you install the ColorBurst RIP. Drag the folder anywhere on your system where you want to store it. If you want to print with the hot folder over the network, you need to make sure it is shared on the network. See your network administrator for help with setting up folder sharing in Windows.



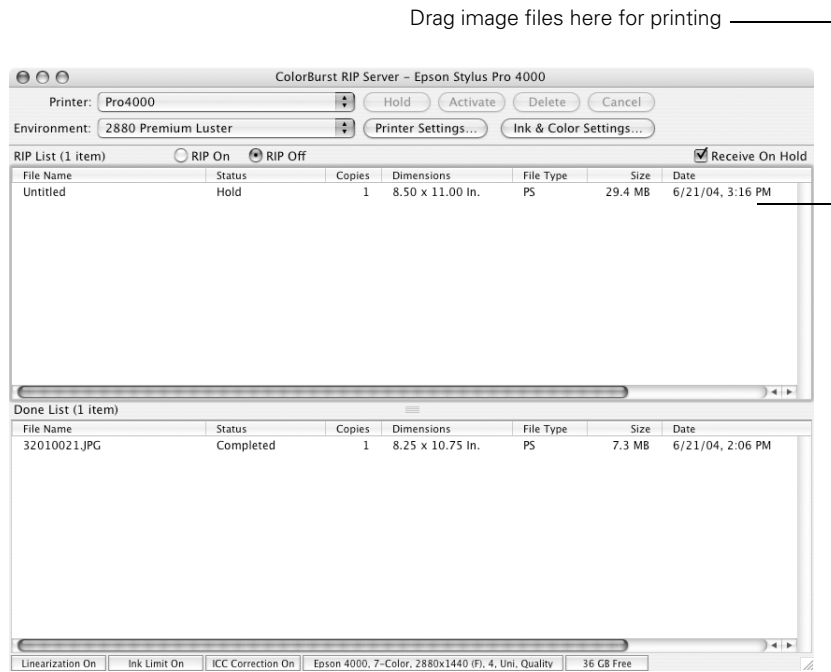
Printing to a Hot Folder

Caution: If you are printing from the ColorBurst RIP server computer, make sure you make a copy of your file or create an alias to drag to the hot folder, instead of dragging-and-dropping the original file. If you drag a file to the hot folder, it's deleted from the hot folder once the RIP brings it into the RIP List. (For some files, you may be able to drag and copy the file from the RIP List or the Done List in the ColorBurst RIP window into another folder if it was accidentally placed in the hot folder.)

To print to the hot folder, browse to it over the network or on your computer, then drag supported image files (see "Supported File Types" on page 38) to the hot folder. ColorBurst prints files in the order they are copied to the folder.

Drag-and-Drop Printing on the RIP Server (Mac OS X)

You can drag and drop files directly into the RIP List window for printing. The RIP automatically receives and prints supported files (see below).



Supported File Types

The following file types automatically print from hot folders and from local drag-and-drop printing to the RIP List (Mac OS X only). Print other file types directly from applications.

- PDF (Adobe Acrobat Portable Document Format)
- PS (PostScript)
- TIFF
- JPEG
- EPS

Managing Print Jobs on the Mac OS X RIP Server

The ColorBurst RIP for Mac OS X includes the following options for managing print jobs:

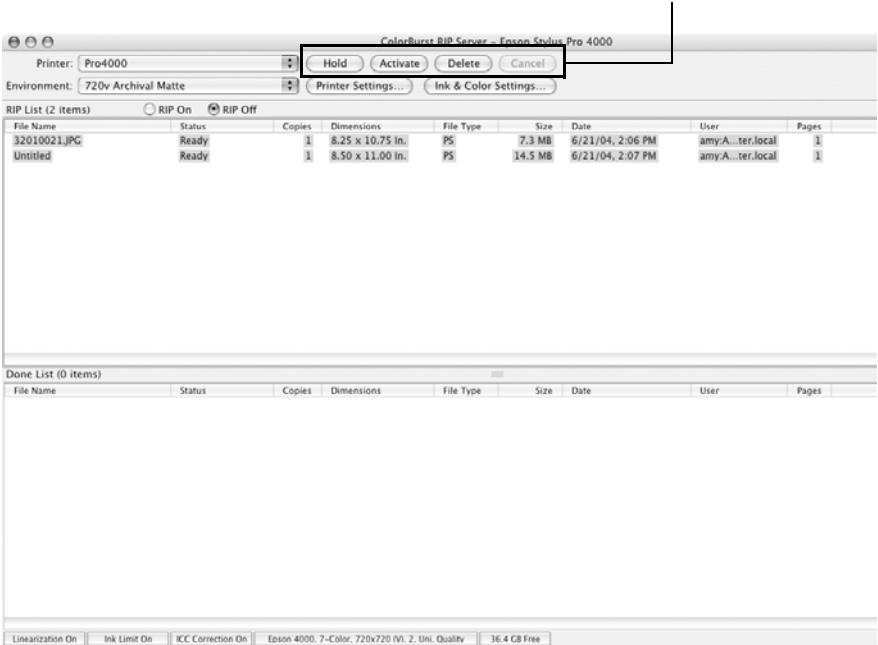
- “Holding, Activating, Canceling, and Deleting Jobs” below
- “Changing File Attributes” on page 40
- “Reordering Print Jobs” on page 41
- “Reprinting Files In the Done List” on page 42

Holding, Activating, Canceling, and Deleting Jobs

The ColorBurst RIP Server window includes buttons for holding, activating, deleting, and canceling print jobs.

Tip: You can select multiple print jobs at once; hold down the **Shift** key and click the file names of the print jobs you want to select.

Hold, Activate, Delete, and Cancel buttons



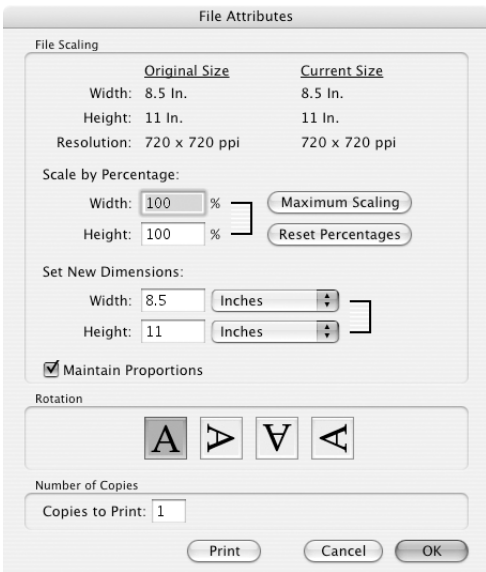
- **Holding:** Highlight a print job’s file name and click **Hold**. The print job Status changes from **Ready** to **Hold**. When you hold a print job, it remains in the RIP List until you activate it or delete it. If it is printing, this option is disabled and you must click **Cancel** to stop the print job.

- **Activating:** To allow a held print job to start printing, highlight the file name and click **Activate**. The Status changes from **Hold** to **Ready**. If the RIP is set to **RIP On**, the print job starts printing.
- **Canceling:** To stop a print job, highlight the file name and click **Cancel**. You can only cancel print jobs that are currently printing. The file is not deleted from the RIP List, so you can print it later or delete it, as described below.
- **Deleting:** To delete a print job from the RIP List or the Done List, click the file name and click **Delete**.

Changing File Attributes

You can adjust print size, rotation, and the number of copies for each file that is sent to ColorBurst. You cannot make changes to the file attributes while a file is printing.

1. Double-click a File Name in the RIP List.
2. You see this screen:



Make adjustments to the file attributes:

- **Scale by Percentage:** Adjust the Width and Height percentage settings to resize the image. Keep **Maintain Proportions** checked to ensure that the image is not distorted. To scale the image up to the largest recommended size (with the lowest recommended resolution of 100 ppi), click **Maximum Scaling**. To return to 100%, click **Reset Percentages**.
- **Set New Dimensions:** Manually enter the Width and Height settings to set the image to fit the page size that you want to print.
- **Rotation:** Click any of the options to rotate the image in the direction shown.
- **Number of Copies:** Enter the number of copies that you want to print of that file.

3. Click OK when you finish adjusting file attributes.

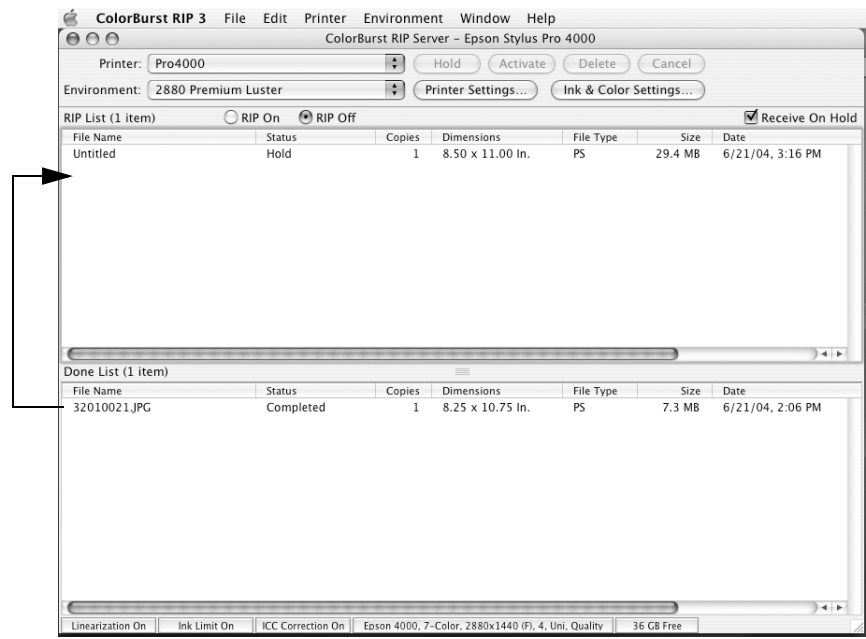
Reordering Print Jobs

To change the order in which your print jobs print, simply click and drag the file name above or below another print job file name. You can also hold down the **Shift** key and choose multiple files to drag at one time.

Tip: You can print multiple copies of a print job with the File Attributes window; see “Changing File Attributes” on page 40.

Reprinting Files In the Done List

If there is a file in the Done List that you would like to print again, click the file name and drag it to the RIP List. This allows you to reprint the file as necessary.



Click and drag files to the RIP List to reprint

Color Management and Printer Linearization

The environment you choose for your paper type and print resolution includes what are normally the optimum color settings for your Stylus Pro 4000. If you notice that the colors are not what you expect, or if you would like to adjust the color management settings to meet your specific needs, you can make changes to the ColorBurst RIP's color management settings and linearize the RIP and your Stylus Pro 4000, if necessary. See these sections:

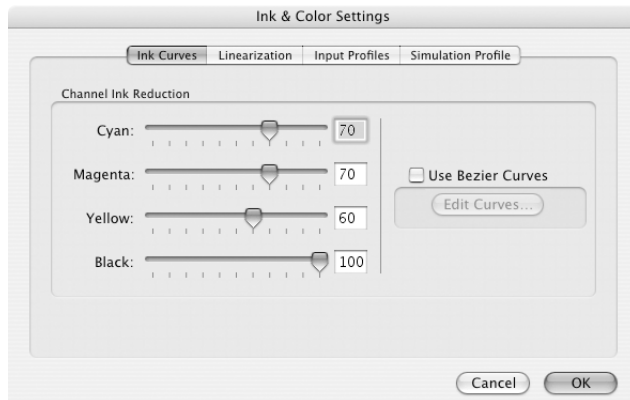
- “Using Color Management Settings in Mac OS X” below
- “Using Color Management Settings in Windows” on page 47
- “Relinearizing an Existing Printer Setup” on page 51

Using Color Management Settings in Mac OS X

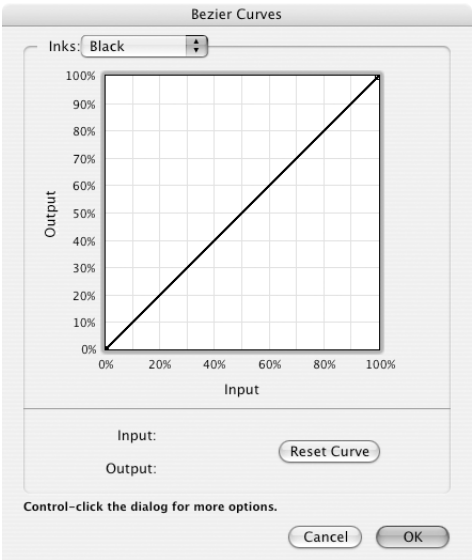
Note: All ICC profile files need to be copied into the ColorBurst RIP for Epson > ICC Profiles folder for the RIP to see them.

Click the **Ink & Color Settings** button in the ColorBurst RIP window to view the Ink & Color Settings window. The settings are described below. When you are done making changes to settings, click **OK**.

- **Ink Curves - Channel Ink Reduction:** The sliders allow you to adjust the maximum amount of a specific ink that is used for the current active environment. You can increase colors by increasing the percent value with the slider. You can reduce colors by decreasing the slider value. You can also type in specific percentages.



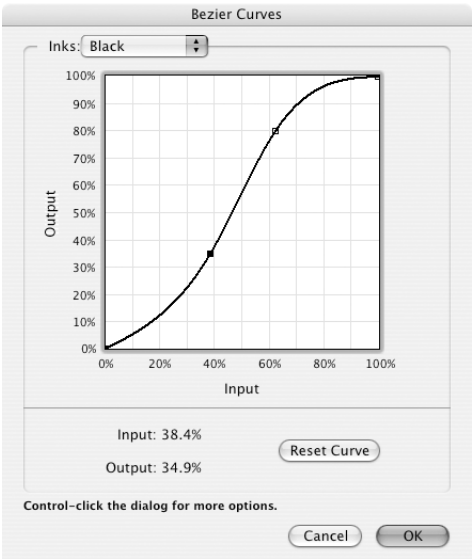
- **Ink Curves - Bezier Curves:** To use Bezier Curves to control the color channel for each ink color, click **Use Bezier Curves** and then click **Edit Curves**. You see a window like this:



Tip: Hold the ctrl key and click in the window, then click **Copy Curve To Other Inks** to copy the curve to all the ink options.

Click any point on the line and drag it to the desired location, then click a second point and move it to create the desired curve.

Click OK to save the curves that you create.

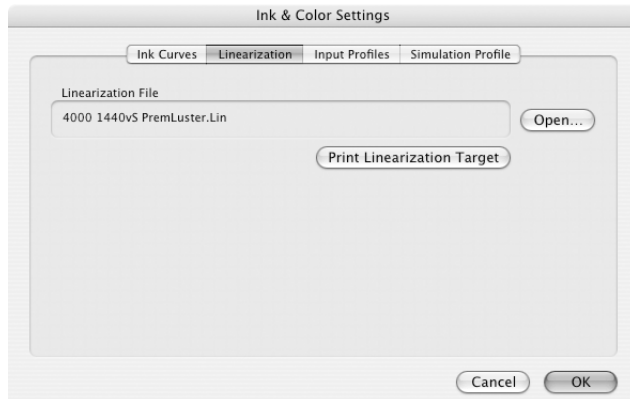


Tip: All the Stylus Pro 4000 printers on your network should go through this process to ensure they are providing the exact same color.

Note: If the color output from the printer does not match the settings in the ColorBurst RIP, you may need to linearize the printer by printing a linearization target and creating a new linearization file with a spectrophotometer and the included ChromaCapture Utility. See “Relinearizing an Existing Printer Setup” on page 51 for details.

- **Linearization:** Over time, your Stylus Pro 4000 printer may not be producing the same accuracy of color as it did when it was new. Changes to the printer age, environment, ink, and media lots all have an effect on what the RIP thinks the printer is supposed to be printing. To better explain to the RIP what the Stylus Pro 4000 is printing, a linearization process is required. By going through this process, you are correcting for any changes in your printer over time.

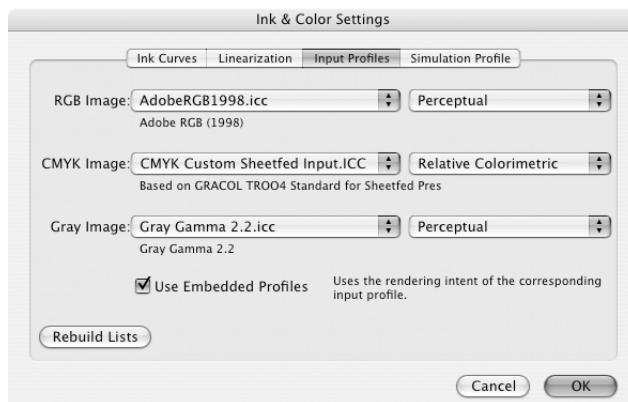
Click the Linearization tab to view the window shown below. The current linearization file is shown. To choose an existing linearization (.LIN) file, click **Open** and choose a file, then click **Open**. The file is saved in the current environment.



Tip: If you have specific input profiles that you want to use with the RIP, you can copy your profile files to the **ColorBurst RIP for Epson > ICC Profiles** folder. They appear in the appropriate lists, depending on the type of image.

Note: The Rendering Intents (in the column on the right) in this dialog box will always override what a file may have embedded within it.

- **Input Profiles:** If Use Embedded Profiles is checked, the RIP will check to see if the print file has a profile. If so, then it will use the embedded profile (except for the rendering intent) and ignore the choices made in this dialog box.



Tip: If you have specific device profiles that you would like to use with the RIP, you can copy your profile files to the **ColorBurst RIP for Epson > ICC Profiles** folder. They appear in the appropriate lists, depending on the type of image.

Note: The simulation profile is not what the printer is trying to match. This choice tells the printer to simulate the color defined under the input profiles dialog not as a Stylus Pro 4000, but as the setting you choose under the Simulation setting.

- **Simulation Profile:** The ColorBurst RIP allows your Stylus Pro 4000 printer to simulate other printers for occasions when you need a specific type of output. Choose an option from the Simulation list, then choose a rendering intent. If you want to turn off the simulation profile, choose **None**.

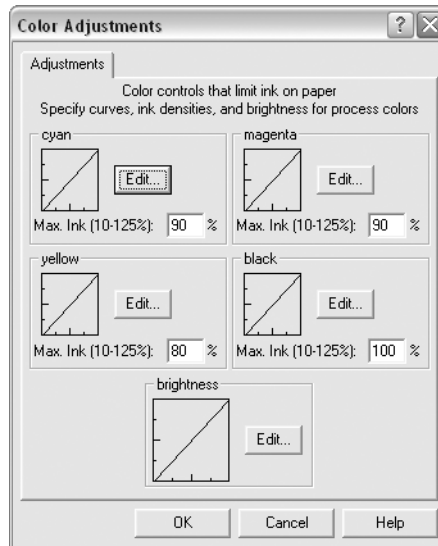


Using Color Management Settings in Windows

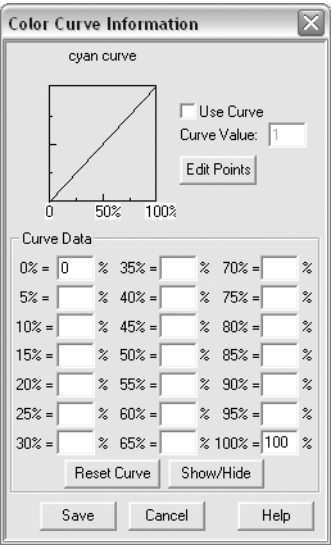
Note: All ICC profile files need to be copied into the **ColorBurst_Epson > Profile > Output > ICC** folder for the RIP to see them.

Choose the options described below to adjust color management settings for the ColorBurst RIP. (The options are available under the Options menu on the ColorBurst RIP.)

- **Color Adjustments:** You can adjust the maximum amount of a specific ink that is used for the current active environment by entering percentages for each ink color.



Click **Edit** to adjust an individual ink curve. You see a window like this:



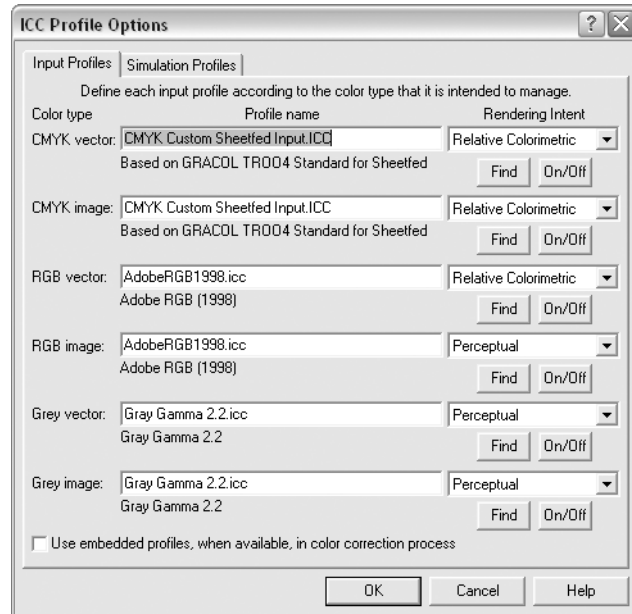
Click **Edit Points** and click any point on the line and drag it to the desired location, then click a second point and move it to create the desired curve.

Or, click **Use Curve** and enter a value for the curve.

Click **Save** to save the curves that you create.

Tip: If you have specific input profiles that you want to use with the RIP, you can copy your profile files to the **ColorBurst_Epson > Profile > Output > ICC** folder. They appear in the appropriate lists, depending on the type of image.

- **ICC Profile Options > Input Profiles:** If **Use Embedded Profiles** is checked, the RIP will check to see if the print file has a profile. If so, then it will use the embedded profile and ignore the choices made in this dialog box. Click **On/Off** to disable or enable each profile.



Tip: If you have specific device profiles that you would like to use with the RIP, you can copy your profile files to the **ColorBurst_Epson > Profile > Output > ICC** folder. They appear in the appropriate lists, depending on the type of image.

- **ICC Profile Options > Simulation Profiles:** The ColorBurst RIP allows your Stylus Pro 4000 printer to simulate other printers for occasions when you need a specific type of output. Click **Simulate output to another printer**, then click **Find** and choose an option. Click **Open**. Then choose a rendering intent. If you want to turn off the simulation profile, uncheck the box.



Relinearizing an Existing Printer Setup

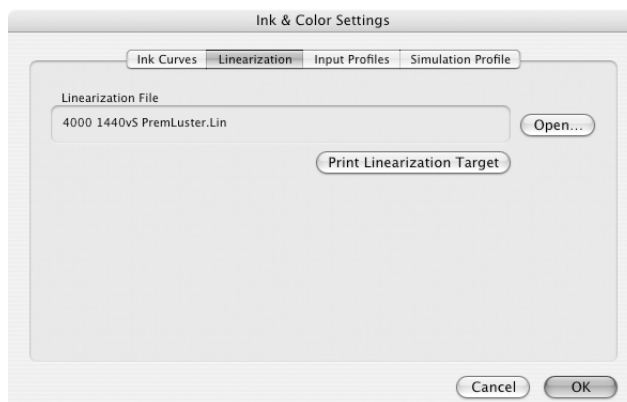
Why you should relinearize? When environments are built for ColorBurst, one of the most important things is linearization. A linearization file is the curve that corrects for differences in chroma (a derivative of L^*ab) at different percentages. Over time (and on every different media) a printer will drift from its original state. By relinearizing you are putting the printer back into its original state. When you relinearize, you have made your environment as accurate as the day it was made.

See the section for your operating system:

- “Linearizing in Mac OS X” below
- “Linearizing in Windows” on page 54

Linearizing in Mac OS X

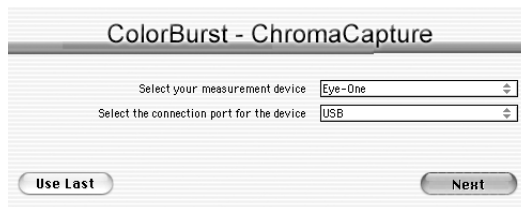
1. Click the Ink & Color Settings button.
2. Click the Linearization tab and then click the Print Linearization Target button.



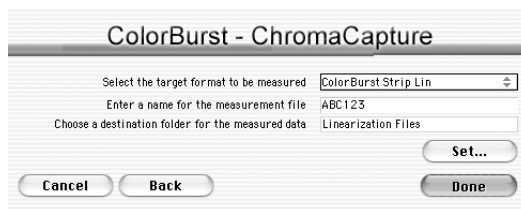
3. Choose the target that corresponds to the spectrophotometer you are using.
4. Click OK to send the target file to the RIP List.

Note: The installer for ChromaCapture CSE is located in the **ColorBurst RIP > Utilities** folder.

5. After you have printed your linearization target, open the ChromaCapture CSE application.
6. Select the spectrophotometer you are using and select the port to which it is connected. Click **Next**.

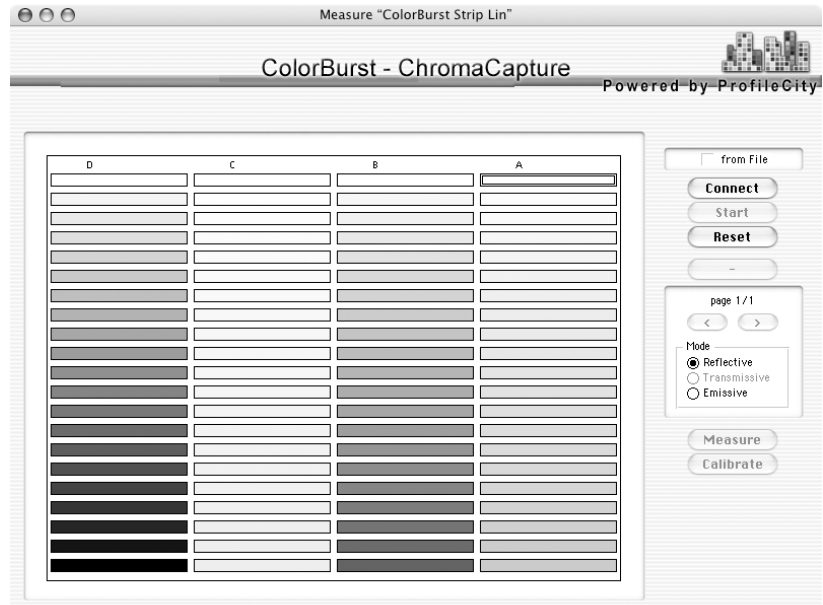


7. Select the Linearization Target that you are reading. The target name corresponds to the target you printed earlier.



8. Enter a descriptive name for your new linearization file. Then click the **Set** button and choose the **ColorBurst RIP > Linearization Files** folder.

9. Click **Connect** to enable your spectrophotometer, then click **Start** and follow the instructions for positioning your spectrophotometer or for manually reading in the target patches.

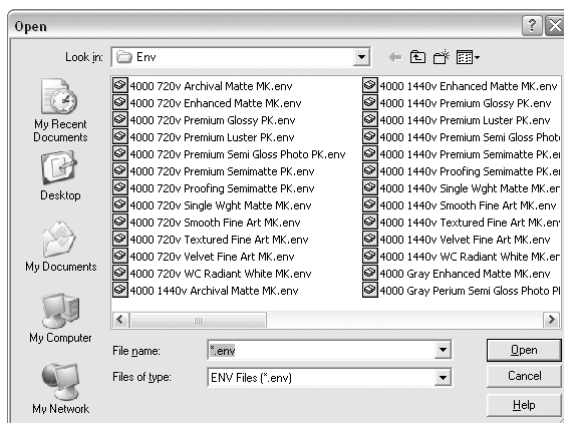


When your patches are completed, ChromaCapture CSE automatically saves the file to the folder you have specified.

10. Click the **Ink & Color Settings** button, then select the **Linearization** tab and click **Open**.
11. Select your linearization file and click **OK**. Click **OK** to close the Ink & Color Settings window.
12. Choose **Save** from the Environment menu, enter a name, and click **OK**.

Linearizing in Windows

1. Choose an environment file in the **Environment > Load** menu in ColorBurst, then click **Open**.



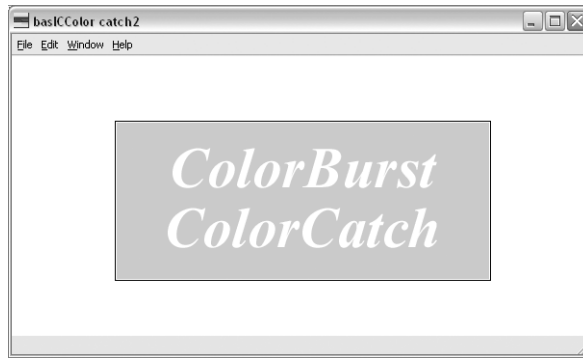
2. Click **Options > Linearization Options**.
3. Click **Select a lin file** and choose a linearization file for your target.



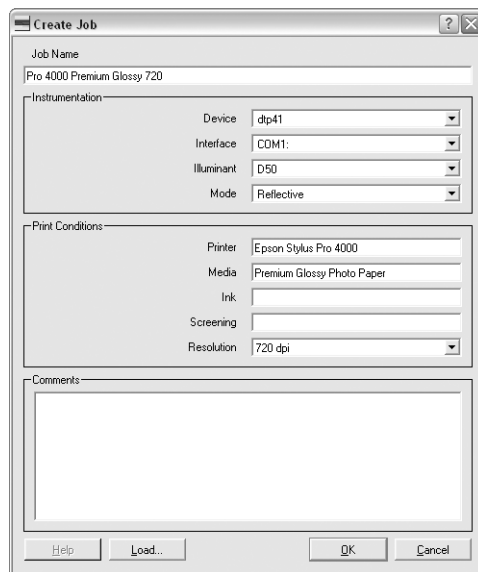
4. Choose a linearization target setting and click **Print target**. After the target prints, let it dry completely.
5. Double-click the ColorBurst ColorCatch icon on your desktop to start ColorCatch.



6. Select **New Job** from the File menu.



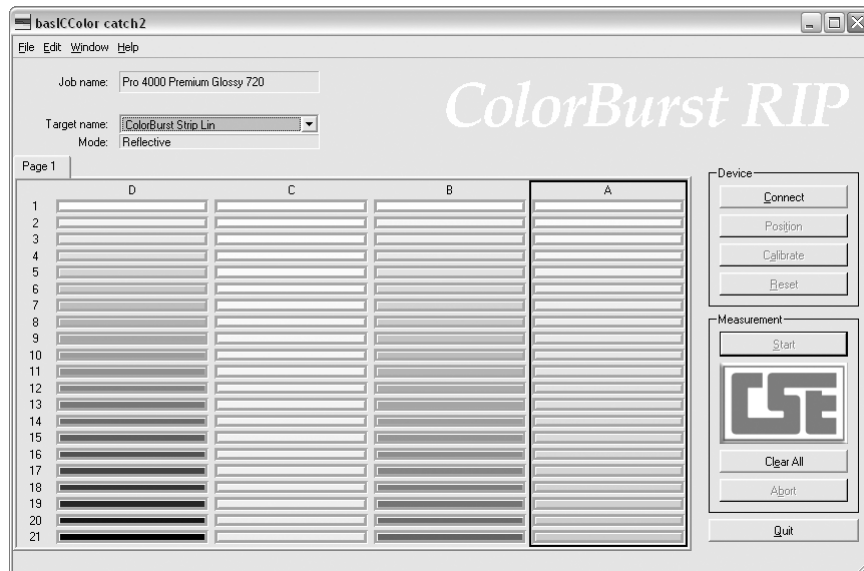
You see the Create Job screen:



7. Enter a Job Name for your linearization and any descriptive text for the Print Conditions information and Comments.
8. Choose your spectrophotometer device and settings under the **Instrumentation** options.
9. Click **OK**.

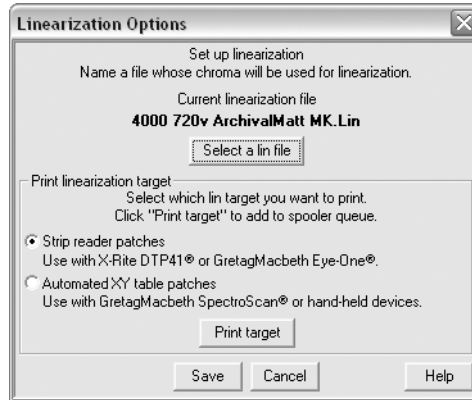
Note: If you are using the DPT41, use the ColorBurst DPT41 reader software located in the LIN folder.

10. Click **Connect** to enable your spectrophotometer, then click **Start** and follow the instructions for positioning your spectrophotometer or for manually reading in the target patches.



11. Once you have read all of the patches on the linearization chart, save your file in the LIN folder and name it accordingly. Make sure you have saved the file in the LIN folder.
12. Open ColorBurst.

13. From the Options menu, open the Linearization Options dialog box.
Click the **Select a lin file** button to select the lin file you just created.



14. Click **Open**.
15. Click **Save**.
16. From the Printer Setup menu, select **Save Printer Setup**. Enter a name with the printer name and other identifying information, such as media type.

You may repeat this process for other media; the densities will be different for each type of media.

Appendix

Where To Get Help

Epson provides technical support and information on the installation, configuration, and operation of professional graphics arts products through the Epson PreferredSM Protection Plan. Call (888) 377-6611, 6 AM to 8 PM, Pacific Time, Monday through Friday.

Before you call, make sure you have your Unit ID number, which is included with the Epson Preferred Protection Plan information that came with your printer. You'll also need your printer serial number and proof of purchase. If you experience difficulty using your Unit ID number when accessing the toll-free Epson Preferred phone number, please call (562) 276-1305 in the U.S. or (905) 709-2567 in Canada during normal business hours.

Epson also provides technical assistance 24 hours a day through the World Wide Web. You can reach Epson Support at <http://support.epson.com>. At this site, you can download drivers and other files, look at product documentation, access troubleshooting information, and receive technical advice through e-mail.

System Requirements

Before you install the software, make sure your computer meets the minimum system requirements listed below.

Macintosh ColorBurst Server

- Power Macintosh G4, 800 MHz or faster
- Macintosh OS X 10.2.6 or later, or OS X 10.3.4 or later
- 500MB hard drive space (40GB recommended—network storage may be used, but may result in slower throughput)
- 512MB RAM (1GB recommended)
- USB connection
- TCP/IP networking protocol enabled with a static (manual) IP address

Windows ColorBurst Server

- Pentium® 4, 1.7 GHz or faster
- Windows 2000 or XP
- 500MB hard drive space (40GB recommended—network storage may be used, but may result in slower throughput)
- 512MB RAM (1GB recommended)
- TCP/IP networking protocol enabled with a static IP address
- 1024 × 768 resolution display

Macintosh Client Systems

- Power Macintosh G4, 800 MHz or faster
- Macintosh OS X 10.2.6 or later, or OS X 10.3.4 or later
- 500MB hard drive space
- 512MB RAM
- TCP/IP networking protocol enabled

Windows Client Systems

- Pentium® 4, 1.7 GHz or faster
- Windows 2000 or XP
- 500MB hard drive space
- 512MB RAM
- TCP/IP networking protocol enabled

Index

A

Activating print jobs, 14 to 15, 39 to 40
Advanced media control, 12

B

Banding, 12, 18
Bezier curves, 44
Bidirectional printing, 12, 19
Borderless printing, 12, 19

C

Canceling print jobs, 39 to 40
Channel Ink Reduction, 43
Choosing printer, 8 to 10
ChromaCapture CSE, 52 to 53
Clients
 Macintosh, 21 to 23
 Windows, 24 to 32
Color adjustments, 47
Color management
 Macintosh, 43 to 46
 Windows, 47 to 50
ColorBurst ColorCatch, 54 to 56
Configuration, RIP, 5
Copies, 40 to 41
Copy ink curve, 44
Cut Media setting, 12, 19

D

Deleting print jobs, 39 to 40
Done List, 42
Drag-and-Drop printing, 38

E

Edge-to-edge printing, 12, 19
Environment settings, 10 to 13, 18 to 19
Epson help, 59

F

File attributes, 40 to 41
File types for hot folder printing, 38

H

Height, 12, 40 to 41
Help, Epson, 59
Holding print jobs, 14 to 15, 39
Hot folder, 12, 18, 34 to 37, 38

I

Increasing colors, 43, 47
Ink & Color settings, 43 to 46
Ink curves, 43 to 44, 48
Input profiles, 46, 49 to 50
Installing
 Mac OS X client software, 21 to 23
 server software in Windows, 15 to 19
 server software on a Macintosh, 7 to 10
 Windows client software, 24 to 32

L

Linearization
 in Windows, 54 to 57
 on a Macintosh, 51 to 53
Linearizing
 on a Macintosh, 45

M

Macintosh

- client setup, 21 to 23
- color management, 43 to 46
- drag-and-drop printing, 38
- linearization, 51 to 53
- managing print jobs, 39 to 42
- printing, 33
- server software, 7 to 15
- setting up hot folder, 35 to 37
- system requirements, 59 to 60

Managing print jobs, 39 to 42

Micro feed adjustment, 12, 19

MicroWeave setting, 18

N

Network configuration, 5

Network print server name, 13

Number of copies, 40 to 41

O

Offset image, 12

Order of print jobs, 41

P

Page settings, 12

Paper feeding setting, 12, 19

Print from roll, 12, 19

Print from sheet, 12, 19

Print jobs, managing, 14 to 15, 39 to 42

Print quality, 12, 18

Print server name, 13

Print settings, 10 to 13, 18 to 19

Print size, 40 to 41

Printing

drag-and-drop, 38

from Adobe InDesign, 34

from Adobe Photoshop, 34

from applications in Mac OS X, 33

from applications in Windows, 34

from QuarkXPress, 34

with a hot folder, 34 to 37

Profiles, 46, 49 to 50

R

Receiving print jobs, 14 to 15

Reducing colors, 43, 47

Relinearizing, 51 to 57

Rendering intent, 46, 49 to 50

Reordering print jobs, 41

Reprinting files, 42

RIP server

installing in Windows, 15 to 19

installing on a Macintosh, 7 to 10

name, 13

starting in Windows, 17 to 19

starting on a Macintosh, 8 to 10

turning on and off, 14 to 15

Roll fed media, 12, 19

Rotation, 40 to 41

S

Server installation

Macintosh, 7 to 10

Windows, 15 to 19

Setting up

clients, 21 to 32

RIP server in Windows, 15 to 19

RIP server on a Macintosh, 7 to 15

Sheet fed media, 12, 19

Simulation profiles, 46, 49 to 50

Size, 40 to 41

Spectrophotometer, 51 to 53, 55 to 56

Starting print jobs, 39 to 40

- Support, 59
- Supported file types, 38
- System requirements, 59 to 60

T

- Target, 51 to 53, 54 to 56

W

- Width, 12, 40 to 41

Windows

- client setup, 24 to 32
- color management, 47 to 50
- linearization, 54 to 57
- printing, 34
- server software, 15 to 19
- setting up hot folder, 37
- system requirements, 60

