

Test and Measurement

Voltage Indicators and Automotive Testers	J2 - J5
Multimeters Selection Chart	J6
Multimeters	J7 - J16
Clamp Current Meters Selection Chart	J17
Clamp Meters	J18 - J26
AC/DC Clamp Adaptors for Digital Multimeters	J27
Power Clamps & Power Analysers	J28 - J29
Insulation Testers Selection Chart	J30
Insulation Testers	J30 - J35
Socket, RCD, Loop Impedance & Earth Resistance Testers	J36 - J41
Cable Locators	J42 - J43
Appliance Testers	J43 - J44
Appliance Test Tags	J45
Phase Rotation Testers	J46 - J47
Low Resistance Ohm Meters (DLRO)	J47
Voltage, Current & Thermocouple Sources	J48
Stud Finder & Tachometer	J49
Temperature & Thermometers	J50 - J51
Temperature & Humidity Loggers	J52
Temperature Probes & Accessories	J53
Thermal Imaging	J54
Misc Meters, Lux, Sound & Capacitance	J55
High Voltage Test Equipment	J56 - J59
Test Leads & Accessories	J60 - J62
Meter Kit Cases	J63
Waterproof Cases	J64
Triple R Repair & Calibration Services	J64

Voltage Indicators & Detectors

Electrical Test Screwdrivers

ACTEST3 Test Screwdrivers are conventional neon light indicator lamp style test screwdrivers with GS/TUV and CE approvals, and they have insulated shafts.

Catalogue No.	Driver Tip Width	Length (mm)	Weight (g)
ACTEST3	3.5	190	27



ACTEST3

Voltage Detector

The **T7107A** AC Voltage Detector is ideal for electrical troubleshooting, detecting a live AC source & locating a burnt out bulb in a series circuit. A bright LED & buzzer alarm informs you that a voltage is present. Features an ergonomic pen shaped design for the ease of carrying & storage. The AC Voltage Detector also includes a Precision Screwdriver for replacing 2 x AAA batteries.

- Voltage Range 50V-1000V AC
- Frequency range 50Hz - 500Hz
- Contact free voltage testing
- Phase detection in sockets
- Rapid detection of cable breaks
- Bright LED
- Variable tone buzzer alarm
- No contact electrode



Compliance and Safety
IEC61010 CAT IV 1000V, UL, CE

Voltfing AC Voltage and Magnetic Field Detector

The **T7108** is a compact AC voltage detector that detects an electric field from 50V to 600V AC. Ideal for tracing conductors that are live and finding breaks in cable. It will detect magnetic fields in solenoids in relays, contactors, magnetic valves, etc.

- AC Voltage Detection
- Magnetic Field Detection
- Audible and Visual Indication
- Permanently On

Feature	Range
Voltage	100V to 600V AC @ 50Hz or 60 Hz
Operating Temperature	0 to 50° C
Humidity	Up To 85% RH



Compliance and Safety
IEC61010 CAT III 600V, CE

Voltfing with Torch

The **T7114** Voltfing is used for detecting a voltage without contact.

- Has a light and audible sound to indicate voltage
- Includes On/Off switch
- Contact-free optical and acoustic indication of AC voltages between 50V and 600V
- Quick and accurate detection of cable breaks in open-ended cables, e.g. cable drums
- Phase detection in sockets
- No contact electrode
- Dimensions: L140 x H25 x W21mm
- Weight: Approx 50g
- Batteries: 2 x 1.5V AAA



Compliance and Safety
IEC61010 CAT III 600V, CE

Voltage Indicators & Detectors

Voltfinger

The **T7150** Voltfinger has extra features like continuity and live line indication. A built-in torch and a high quality chrome vanadium molybdenum steel screwdriver tip that fits into Australian socket outlets. Indication of voltage or continuity is audible and visual.

Features

- Single Pole Test through Screwdriver
- AC Voltage 50-600V (optical and acoustical)
- Direct Contact and Non Contact Method Selectable
- Continuity Test from 0-3M Ω
- High Quality Screwdriver tip
- Quick and Accurate Detection of Cable Breaks
- Detect Presence of Voltage at Outlets, Lighting Fixtures, Circuit Breakers
- Super Flashlight via LED in Front Tip
- Glow Lamp in Back Cap
- Audible Alarm Warning when Voltage Present
- 3 Switchable Positions to Select Functions
- Batteries: 2 x 1.5V AAA



Feature	Range
Voltage	50V to 600V
Continuity	0 to 3M Ω
Frequency	50Hz to 500Hz

Compliance and Safety

IEC611010-1 CAT III 600V Pollution Degree 2

T7150

Current Tracer / AC Voltage Detector

A voltage/current detector with a difference. Highly sensitive with an adjustment for each of the two sensors. When selecting the voltage detector it functions similar to our "Voltfingers", but with an adjustable feature that gives you the option to set the voltage sensitivity to your requirement. The current tracer is similar to the voltage detector except it detects current flow. This feature will detect current flow in shielded or armoured cables i.e. current in the cable core or eddy currents in the armouring or shield. The item being tested must have current flowing through it. Identifying power in shielded and armoured cables or in metal boxes. The unit can even locate power cables up to 6 feet underground.



Features

- Current sensor detects current flow through shielded cables e.g. armoured cables, conduit and metal junction boxes
- Sensitivity adjustments to increase or reduce sensor trigger threshold
- Audible and visual indication

Some Application Examples

- Locating power cables
- Power cable identification before spiking
- Indicating if a metal distribution box is "live"
- Identifying power in metal boxes, enclosures, substations, pillars, pipes and cables
- Warning of the presence of power cables before excavating
- Locate breaks in conductors

Technical Data

Voltage Detection: 5V to 1000V AC
 Current Sensitivity: >100 mA AC
 Audible Indication: Beeper (voltage and current)
 Visible Indication: Flashing LED (voltage and current)
 Frequency Range: 50Hz to 500Hz

Ordering Information

Part No: **T475**
 The detector comes with instructions and batteries
 Batteries: 4 x LR44
 Size: L192 x W31 x H24mm
 Weight: 60g

Compliance and Safety

IEC61010 CAT III 600V, CE

NOTE: Information regarding electrical field proximity testers, that is Voltfingers, or Proximity voltage detectors.

WARNING:

Do not take risks. Serious injury or death may result if not used correctly.
These instruments are only to be used by a competent person after reading appropriate instructions.

CAUTION:

These units must be proven on a known live source before and after testing.
An absence of detection does not mean the circuit under test is dead.

Voltage & Automotive Testers

Professional Automotive Digital Multimeter

Features

- 3 $\frac{1}{2}$ Digit 4000 Count OR 4 $\frac{1}{2}$ Digit 40000 Count LCD
- 43 Segment Bargraph
- Updates 5 or 1.25 times
- APO after 5 min.
- RPM input & output
- 18 x Store/recall/erase
- Min/max & average
- Peak max/min
- Relative Zero
- Data Hold
- 4 selectable triggers positive or negative
- Dwell; select no. of cylinders
- Backlight
- Diode Test
- RPM for 4 stroke & 2 stroke
- Alternator Tester
- O₂ Sensor Tester
- Blink Type Fault Code Detector
- Diagnostic Trouble Code as per Mercedes Benz Guide

Compliance and Safety

IEC61010-1 CAT II 750VAC 1000V DC

Feature	Range	Accuracy
DC Voltage	40/400mV/4/40/400/1000V	0.8% \pm 6d
AC Voltage	40/400mV/4/40/400/1000V	@50-60 Hz - 1% \pm 10d 40-1kHz - 3.5% \pm 10d 1k-2 kHz - 4% \pm 10d
DC Current	4000mA/10A	1.2% \pm 6d
AC Current	4000mA/10A	@ 50-60Hz - 1.2% \pm 6d 40-1kHz - 2.5% \pm 10d 3.5% \pm 10d
Resistance	40/400 Ω /4/40/400k Ω /4/40M Ω	1.5% \pm 5d
Frequency	99.999 to 20000 kHz	0.002% \pm 4d
Temperature	-20° to 1000°C	0.2% \pm 3° C
RPM	60 to 20000 rpm	2 rpm
Dwell	0.0 to 360 or 0% to 100%	1.2 /krpm \pm 1d
Fuel Injection	0.05ms to 250 ms	0.05 ms \pm 1d



Ordering Information

Part No: **TBM338**

The unit comes with test leads, inductive pick-up, holster, temperature adaptor, type-k thermocouple bead probe & user manual.

Batteries: 9V, 6F22

Fuse: 15A/600V IR 100kA

Size: L198 x W97 x H55 mm

Weight: 500g including holster

For replacement test leads order AL35L,

See page J60 for details.

LED & LCD Voltage Testers 1000V

Features for BT66 & 69

- Non contact EF detection
- 2mm test tips with 4mm screw on tip accessories
- Indicator self test feature
- Probe contact "live" indication
- Continuity Test
- Updates 5 x per sec.
- APO after 16 seconds
- IP65 housing

BT69 Extras

- 3 digit 999 count LCD plus LED Indication
- Vibrating Voltage Indicator
- Trip test for 230V/30mA RCD

Safety and Compliance

Meets EN61326, EN61000-4-2 and EN61000-4-3. IEC61010 CATIII 1000V, CATIV 600V. IEC61243-3 class B, CE

Ranges BT66 & 69

Features	Range
Voltage AC/DC LED Indication	6,12,24,50,120,230,400,690,1000V
Electric Field Detection	> 18V when touching conductor 50/60 Hz
Continuity @ < 4.5VDC	Audible between 50k Ω & 2000k Ω

Extra Ranges BT69 only

Feature	Threshold	Accuracy
DC 999V	> + or - 4.5VDC	1% + 2 digits
AC 999V	> 8 V AC	2.5% + 4 digits
RCD trip (PTC protected)	30 mA at 230 V AC	Path 7.7 k Ω nominal

Ordering Information.

BT66 LED version

BT69 LCD & LED Version

The units come in a gift box with lead, Ø4mm screw-on probe tips, batteries and instruction manual.

Batteries: 2 x 1.5V AAA or AA

Size: L233x W57 x H40 mm

Weight: \pm 220g



BT66

BT69

Voltage Testers

1000V LED & LCD Voltage Testers 1000V

This is a new family of voltage testers with super features including electric field detection.

Features

- EF Detection
- Bright LED Voltage Indication
- DC Polarity or AC Voltage Indication
- Plug in Leads as per DMMs
- Built-in Lead Storage and Adaptor
- Updates 5 x per second
- 8kV Surge Protection
- APO after 16 seconds
- Continuity Test
- **TBT59** only
- 3 digit 1000 count LCD
- Vibrating Voltage Indicator
- 230V 30mA RCD trip

Compliance and Safety

IEC61010 CATIII 1000V CATIV 600V IEC 61249-3

Feature	Range
Voltage AC/DC LED Indication	6,12,24,50,120,230,400,690,1000V
Voltage AC/DC TBT59	5.5V to 999 V @ $\pm 2\% \pm 2d$
Electric Field Detection	> 18V when touching conductor

Ordering Information.

TBT56 LED version

TBT59 LCD & LED Version

Batteries: 2 x 1.5V AAA Installed

Size: L178x W57 x H34mm

Weight: 174g

For replacement test leads order AL04, See page J60 for details.



TBT56

TBT59

Vibrating Voltage and Line Tester

Features

- Large scale voltage indicator 110V to 750V DC on red scale and 125V to 750V AC on yellow scale
- Slip proof and oil resistant rubber grip, ribbed and padded for extra protection
- Robust contact pins designed to fit Australian and New Zealand plugs, and not break easily
- Pins are easily replaceable
- Unit is double insulated electrically and thermally
- Casing is made from unbreakable macrolon
- The probe pins are spring loaded for protection and easy measurement
- DC range shows polarity

Compliance and Safety

Safety: Meets IEC1010 CAT II for 1kVDC and AC IEEC61243-3 (CATIV 300V)

EMC: Meets EN55022, CE, C_v

WIBRETEST



Pen Type Meter

Features

- CAT III 600V
- Display: 1999 counts
- Auto/Manual Range
- Maximum Value Hold
- Data Hold
- Auto Power Off
- DCV: 200m/2/20/200/600V +/- 0.7%
- ACV: 200m/2/20/200/600V +/- 0.8%
- Resistance: 200/2k/20k/200k/2M/20M ohm +/- 1.2%
- Continuity Test
- Diode Test
- Detecting AC Voltage of Special Frequency
- The Sensitivity of AC Voltage Adjustable
- Sound and Flash Alarming

Compliance and Safety

Safety: Meets IEC1010-1 CAT II for 1kVDC and AC

EMC: Meets EN55022, CE, C_v



Ordering Information

Part No **T8211D**

Accessories: Complete with carry pouch

Multimeters Selection Chart

SELECTION CHART

FEATURES	T8221A	T8221C	T7001	T7014	TBM22	TBM27	C8265	T8268	T8229	HY4300	TBM682	TBM685	TBM655	BM251	TBM805	TBM807	BM821	BM822	BM827	BM525	BM859CFA
Type of display	Digital	Digital	Analog	Analog	Digital	Digital	Digital	Digital	Digital	Digital	Digital	Digital	Digital	Digital	Digital	Digital	Digital	Digital	Digital	Digital	Digital
LCD counts	1999	1999			4000	6000	1999	3999	3999	1999	6000	6000	6000	2500	4000	4000	5000	5000	5000	5000	5000
LCD digits	3 1/2	3 1/2			3 3/4	3 5/6	4 1/2	3 3/4	3 3/4	3 1/2	3 5/6	3 5/6	3 5/6	5 5/6	3 3/4	3 3/4	3 5/6	3 5/6	3 5/6	3 5/6	5 4/5
Battery Test	✓	✓	✓		✓	✓		✓	✓		✓	✓	✓	✓	✓	✓	✓	✓	✓	✓	✓
Max AC Voltage	750	600	500	600	600	600	750	750	750	750	1000	1000	1000	1000	1000	1000	1000	1000	1000	1000	1000
Max DC Voltage	1000	600	500	600	600	600	1000	1000	1000	1000	1000	1000	1000	1000	1000	1000	1000	1000	1000	1000	1000
Max AC Current	10	10		10		2 mA	10	10	10	20			10	10	10	10	10	10	10	10	10
Max DC Current	10	10	250mA	10		2 mA	10	10	10	20			10	10	10	10	10	10	10	10	10
Fused Range	200mA	200mA		✓			10	10	10	20			✓	✓	✓	✓	✓	✓	✓	✓	✓
Max Resistance	20M	20M	500k	20M	40M	6M	200m	200M	40M	20M	6M	6M	60M	60M	40M	40M	60M	60M	60M	60M	50M
Continuity Beeper	✓	✓			✓	✓		✓	✓	✓		✓	✓	✓	✓	✓	✓	✓	✓	✓	✓
Diode Test	✓	✓	✓	✓	✓	✓		✓	✓	✓		✓	✓	✓	✓	✓	✓	✓	✓	✓	✓
Autorange		✓			✓	✓		✓	✓		✓	✓	✓	✓	✓	✓	✓	✓	✓	✓	✓
Frequency	30-1000	20k	1M	30k	100k	100K	20K			60k						1M	1k	1k	1k	1k	200k
Capacitance μ F		2000		20	3000	2000	2000	200	200	200		2000			3000	3000	9999	9999	9999	9999	9999
Temperature C		-20 to 1000		-40 to 150					-20 to 1000							-20 to 300			50 to 1000	50 to 1000	50 to 1000
Min/Max		max										✓	✓		max	max			✓	✓	✓
Data Hold	✓	✓						✓	✓	✓	✓	✓	✓	✓	✓	✓	✓	✓	✓	✓	✓
Crest or Peak Hold																					
True RMS																✓		✓	✓	✓	✓
Back Light		✓					✓	✓	✓	✓						✓		✓	✓	✓	✓
Splash & Dust Proof					✓	✓					✓	✓	✓	✓	✓	✓	✓	✓	✓	✓	✓
Transient Proof	6kV	6kV	2.5kV	6kV	4kV	4kV	6kV	6kV	6kV	6kV	12kV	12kV	6kV	6kV	6kV	6kV	8kV	8kV	8kV	8kV	8kV
Relative Reference								✓	✓						✓	✓	✓	✓	✓	✓	✓
Bargraph						✓											✓	✓	✓	✓	✓
Holster			✓				✓	✓	✓	✓				✓	✓	✓	✓	✓	✓	✓	✓
Auto Power Off		✓			✓	✓	✓	✓	✓	✓	✓	✓	✓	✓	✓	✓	✓	✓	✓	✓	✓
Fire Retard Case					✓	✓					✓	✓	✓	✓	✓	✓	✓	✓	✓	✓	✓
RS232 Interface														✓			✓	✓	✓	✓	✓
Data logger																					
Other Features	hfe 1 to 1000	hfe 1 to 1000				EF	hfe 1 to 1000; Incorrect plug warning	Incorrect plug warning	RH, Lux, dB; Incorrect plug warning	LAN & USB tester	EF	EF	Beep-Jack, EF	Beep-Jack, EF, Bargraph	Beep-Jack	Beep-Jack	Beep-Jack Bargraph	Beep-Jack Bargraph	Bargraph Zoom	Beep-Jack Logger 43000 Readings	%4-20 dBm
CAT III	600V	600V	150V	600V	300V	300V	600V	600V	600V	600V	>1000V	>1000V	1000V	600V	600V	600V	>1000V	>1000V	>1000V	>1000V	>1000V
CATIV	300V	300V	100V	300	150V	150V	300V	300V	300V	300V	1000V	1000V	600V	300V	300V	300V	1000V	1000V	1000V	1000V	1000V
Warranty (years)	1	1	1	1	1	1		1	1	1	Life	Life	Life	Life	1	1	Life	Life	Life	Life	Life

Pocket Multimeters

Digital Multimeters Pocket Sized Standard & Deluxe

Two feature packed pocket meters for people who require a compact professional meter.

Features

TBM22 (Standard)

3½ Digit 4000 Count LCD
Updates 3 x per second
Data Hold
30ms high speed max hold
Standard APO idle 30 min
Hi-Z DCV and ACV
Continuity and Diode Test

TBM27 (Deluxe)

3½ digit 6000 Count LCD
Updates 5 x per second
Autocheck™
Electric Field Detection
Intelligent APO idle 3 min
Hi-Z DCV and ACV
Continuity and Diode Test

Compliance and Safety

IEC61010-1 (1st Edition with amendment 1 & 2), UL61010B-1
(1st edition) CAT II 600V, CAT III 300V.
Transient Protection 4kV lightning surge.
Meets EN61326 (1997, 1998/A1), EN61000.

Feature	Range		Accuracy	
	TBM22	TBM27	TBM22	TBM27
DC Voltage	400mV	6 V	1.0% +2d	0.5% +3d
	4, 40, 400 V	60 V	2.0% +2d	1.0% +5d
		600 V Autocheck	2.5% +4d	2.0% +4d
	600 V	600V Hi-Z		
AC Voltage	50-60Hz 4, 40, 400V	50-60 Hz 6, 60, 600	2.0% +5d	1.5% +5d
	60-500Hz 4, 40, 400V		3.0% +5d	
	50-500Hz 600V		3.5% +5d	
Resistance	400 Ω	600 Ω	1.5% +6d	2.0% +6d
	4k, 40k, 400kΩ	6 kΩ	1.0% +4d	1.2% +6d
	4 MΩ	60, 600 kΩ	1.5% +4d	1.0% +4d
	40 MΩ	600 MΩ	2.5% +4d	2.0% +4d
Diode Test	< 1.6VDC 0.25mA	< 2.6VDC 0.28mA		
Capacitance	500nF, 1000nF, 50µF	100nF, 1000nF, 10µF	3.5% +6d	3.5% +6D
	100µF, 2000µF	100µF, 2000µF		
Frequency	5 Hz to 1000 MHz	10 Hz to 30 kHz	0.5% +4d	0.5% +4d
DC Current		400 mA		1.5% +3d
		2000 mA		1.2% +3d
AC Current		50 to 60 Hz		
		400mA		2.0% +3d
		2000mA		1.5% +3d
Electric Field TBM27 Only	15 to 55 V	—		
	30 to 85 V	— —		
	55 to 145 V	— — —		
	85 to 190 V	— — — —		
	120 + V	— — — — —		
Consumption APO	1mA			
Power Consumption	2mA typical			
Low Battery	± 4.5 V			
Operating Temperature	-10° to 50°C (accuracy specifications at 23°C ± 5°C & less than 75% RH)			



TBM22



TBM27

Ordering Information

TBM22 or TBM27

Each unit comes in an oyster pack with operating manual, batteries installed and protective holster.

Batteries: 1 x 3V CR2032

Size: L113 x W53 x H10.2mm

Weight: 78g

Optional Accessories

Soft Carry Pouch: **TBMHC20**

See page J61 for details

Analogue Multimeters

Analogue Multimeter

CABAC's T7001 analogue multimeter is a useful compact test instrument for basic measuring for the handyman, or simple electrical work. It is small enough to fit into a pocket, and has leads permanently attached. The instrument comes in a shock proof case with full instructions and a 1.5V battery.

Features

- AC/DC voltage up to 500V
- DC current up to 250mA
- Resistance up to 500k Ω
- Mirror scale for accurate testing
- Overload protection 200mA fuse 250V
- Operating temperature 0° to 40°C at RH < 80%

Compliance and Safety

IEC1010-1 CAT II 300V, CE, C \checkmark

Feature	Range	Accuracy
AC Volts	10, 50, 500V	5%
DC Volts	2.5, 10, 50, 250, 500V	5%
Milli Amps	250, 10, 0.5mA	5%
Ohms	1K, 10K Ω	5%
Battery test	1.5, 9V	5%



Ordering Information

Part No: **T7001**

Battery: 1 x 1.5V AA

Size: H65 x W130 x L40mm in holster

Weight: 200g including battery

Analogue Multimeter Professional

A well priced, multi-featured analogue multimeter. Ideal for work in laboratories, training institutions, workshops, or whenever a clear analogue indication is required. Analogue meters give clear visual indication of pulses and electrical measurements. Analogue meters always give actual true RMS readings regardless of the waveform, thus saving on expensive digital true RMS meters. If you work with electronics this could be a well-priced solution for a top quality meter.

Features

- 8 Functions
- 20 Ranges
- 10 M Ω input impedance
- Fused Current Input
- Needle mirror for error of parallax
- Large, clear and colour coded screen
- Operating Temperature 0° to 40°C at RH < 80%
- Diode Test Current 1mA per \pm 2.5 V (continuity buzzer)

Compliance and Safety

IEC 61010 CAT III 600V

Feature	Range	Accuracy
AC Volts	0.25/2.5/25/250/600V	\pm 4% f.s.
DC Volts	0.25/2.5/25/250/600V	\pm 3% f.s.
AC/DC Current	2.5/25/250mA +10A	AC \pm 4% f.s. DC \pm 3% f.s.
Resistance	200 Ω /2k/20k/200k/2M/20M Ω	\pm 3% f.s.
Capacitance	2/20/200nF/2/20mF	\pm 3% f.s.
Frequency	0-20 kHz	\pm 4% f.s.
Temperature	-40° to 150°C -40°F to 300°F	\pm 5% f.s.



Ordering Information

Part No: **T7014**

Unit is supplied with test leads, battery, manual, and temperature probe.

Battery: 9V 6F22

Fuses: 0.25A/250V 5 x 20mm and
10A/250V 6 x 25mm Fast Blow

Size: H180 x W91 x L48mm

Weight: 330g

For replacement test leads order AL04,
See page J60 for details.

Digital Multimeters

Digital Multimeter Manual Ranging

A compact, reliable digital multimeter with many useful features at a very reasonable cost. A meter with basic electrical functions such as 1000V DC and 750V AC. It is a manual select, compact DMM using the latest technology and includes features like resistance, diode test, current, continuity buzzer and transistor tester.

Features

- 3½ digit 1999 Count LCD
- Manual Ranging
- Data Hold
- Continuity Buzzer
- Updates 2-3 x per second
- Transistor Test hfe 0-1000
- Fused 250 mA Range
- Low Battery Indication

Compliance and Safety

IEC61010 CAT III 600V, CAT II 1000V, CE

Feature	Range	Accuracy
DC Voltage	200m/2/20/200V & 1000V	±0.5% & ±0.8%
AC Voltage	200m/2/20/200V & 750V	±0.8% & ±1.2%
DC Current	200/2m/20mA	±0.8%
	200mA	±1.2%
	10A	±2%
AC Current	2m/20mA	±1.2%
	200mA	±1.8%
	10A	±3%
Resistance	200/2k/20k/200k/2MΩ	±0.8%
	20MΩ	±1%



Ordering Information

Part No: **T8221A**

The unit comes in a gift box with test leads and operating manual

Batteries: 3 x 1.5V AAA

Fuse: 200mA

Size: L158 x W74 x H31mm

Weight: 220g

For replacement test leads order AL04, See page J60 for details.

Digital Multimeter Auto Ranging

A compact auto ranging digital multimeter with many useful features at a very reasonable cost. This meter has basic electrical functions such as 600V AC & DC, temperature, capacitance, diode test, resistance, current, continuity buzzer and transistor tester.

Features

- 3½ digit 1999 Count LCD
- Auto Ranging
- Max. Recording
- Data Hold
- Back Light
- APO
- Continuity Buzzer
- Updates 2-3 x per second
- Transistor Test hfe 0-1000
- Fused 250 mA Range
- Low Battery Indication

Compliance and Safety

IEC61010 CAT III 600V, CE

Feature	Range	Accuracy
DC Voltage	200m/2/20/200V & 600V	±0.7%
AC Voltage	200m/2/20/200V & 750V	±0.8%
DC Current	200μ/2000μ/2m/20/200mA	±1.2%
	2/10A	±2%
AC Current	200μ/2000μ/20m/200m	±1.5%
	2/10A	±3%
Resistance	200/2k/20k/200k/2MΩ	±1.2%
	20MΩ	±2%
Temperature	-20 to 1000 C; 0 to 1800 F	±3%
Capacitance	20n/200n/2/20/200/2000μF	±4%



Ordering Information

Part No: **T8221C**

The unit comes in a gift box with test leads and operating manual

Batteries: 3 x 1.5V AAA

Fuse: 200mA

Size: L158 x W74 x H31mm

Weight: 220g

For replacement test leads order AL04, See page J60 for details.

Multifunction Digital Multimeters

Multimeter / Network USB Cable Tester

A unique 2 in 1 Multimeter and Network Cable Tester with everyday features such as voltage, ohms, continuity, current and LAN tester. As the Electrical Industry diversifies into data, this packaged meter will save on space and time by providing everything at the touch of your hands.

Features

- Cable test: RJ11/RJ12/RJ45, USB
- Live wire identify
- Maximum display: 1999
- Transistor test
- Continuity buzzer

Compliance and Safety

IEC61010 CAT II 1000V Pollution Degree 2, CE

Feature	Range	Accuracy
DC Voltage	200mV - 1000V	$\pm 0.5\% + 1$
AC Voltage	2V - 750V	$\pm 0.8\% + 3$
DCA	20mA - 20A	$\pm 1.0\% + 3$
ACA	200mA - 20A	$\pm 1.5\% + 5$
OHM	200 Ω - 20M Ω	$\pm 0.8\% + 3$

Ordering Information

Part No: **HY4300**

The meter comes in a gift box with manual, leads, installed batteries and type-k thermocouple.

Battery: 1 x 9V 6F22

Size: H190 x W90 x L34mm

Weight: 332g (with battery)

For replacement test leads order AL04,

See page J60 for details.

Carry pouch to suit **CPOUCH-1**

See page J61 for details



Digital Multimeter Manual Ranging

This well priced manual ranging multimeter comes in an overmoulded durable case. The 19999 count display makes for high accuracy readings. It has a unique resettable fuse and audible and a visual warning for incorrect inserting of leads.

Features.

- 4 ½ auto range 19999 count LCD
- Sound and light warning for incorrect insertion of leads
- Resettable fuse
- Data hold
- Backlight
- APO
- Continuity buzzer
- Transistor test hfe 0-1000

Safety and Compliance

Conforms to IEC1010-1 standard CAT III 600V & CAT II 1000V, CE.

Feature	Range	Accuracy
DC Voltage	200m/2/20/200V & 1000V	$\pm 0.15\%$
AC Voltage	2/20/200V & 750V	$\pm 0.8\%$
DC Current	2m/200mA	$\pm 0.8\%$
	10A	$\pm 2.0\%$
AC Current	2/200mA	$\pm 1.2\%$
	2/10A	$\pm 2.5\%$
Resistance	200/2k/20k/200k/2M	$\pm 0.5\%$
	200M	$\pm 0.5\%$
Frequency	20kHz $\pm 1.5\%$	$\pm 3.0\%$
Capacitance	20n/200n/2/20/200/2000F	$\pm 4.0\%$



Ordering Information:

CABAC Part No: **C8265**

The C8265 is supplied in a gift box with test leads, instruction manual & battery.

Battery: 1 x 9V 6F22

Size: 195 x 92 x 55mm

Weight: $\pm 380\text{g}$ (incl. battery)

For replacement test leads order AL04,

See page J60 for details.

Multifunction Digital Multimeters

Digital Multimeter 3 ¾ Auto Range

Features

- Sound & light warning for incorrect insertion of leads
- SMT application
- Data hold
- Maximum value measurement
- Auto power off
- Back light
- Display: 3999 counts
- Continuity check with buzzer
- Diode test
- Transistor test 0-1000
- Continuity test
- Duty cycle test
- Relative measurement
- Resettable fuse inside

Compliance and Safety

IEC1010-1 Standard CAT III 600V and CAT II 1000V

Feature	Range	Accuracy
DC Voltage	400m/4/40/400V	±0.7%
DC Voltage	1000V	±0.8%
AC Voltage	400mV±3.0%, 4/40/400V	±0.8%
	750V	±1.0%
DC Current	400µ/400µ/40m/400mA	±1.2%
	10A	±2.0%
AC Current	400µ/400µ/40m/400mA	±1.5%
	10A	±3.0%
Resistance	400/4k/40k/400k/4MΩ	±1.2%
	40MΩ	±2.0%
Capacitance	4nF±5.0%, 40n/400n/4µ/40µ/200µF	±3.0%
Frequency	10/100/1000/10k/200kHz	±2.0%



Ordering Information

Part No: **T8268**

Each unit comes with test leads and manual.

Batteries: 3 x 1.5V AAA

Size: H195 x W92 x L55mm

Weight: Approx. 380g (including batteries)

For replacement test leads order AL04,

See page J60 for details.

Digital Multimeter 5 in 1 Auto Range

Features

- Sound & light warning for incorrect insertion of leads
- Auto range / Manual range
- Data hold
- Maximum value measurement
- Auto power off
- Back light
- Display: 3999 counts
- Continuity check with buzzer
- Diode test

Compliance and Safety

IEC61010 - 1 CAT II 1000V/CAT III 600V

Feature	Range	Accuracy
DC Voltage	400m/4/40/400/1000V	±0.7%
AC Voltage	400m/4/40/750V	±1.0%
	400V	±0.8%
DC Current	400µ/4000µ/40m/400mA	±1.2%
	10A	±2.0%
AC Current	400µ/4000µ/40m/400mA	±1.5%
AC Current	10A	±3.0%
Resistance	400/4k/40k/400k/4M/4MΩ	±1.0%
Capacitance	50n/500n/5µ/500µ/200µF	±3.0%
Frequency	10/100/1k/10k/100kHz	±2.0%
Duty cycle:	0.1% ~ 99.9%	±3.0%
Temperature	-20°C ~ 1000°C	±3.0% or ±20C, 0°F
(thermocouple)	0°F ~ 1800°F	±3.0% or ±40°F
Temperature (NTC)	0°C ~ 40°C±2°C : 32°F ~ 104°F	±4°F
Humidity	20% ~ 95%RH	±5.0RH
Light	4000Lux/40000Lux	±5.0%
Sound level	40 ~ 100dB	±5dB
Continuity	600Ω, Threshold 50 to 250Ω,	Response < 100ms



Ordering Information

Part No: **T8229**

Each unit comes with test leads, thermocouple adaptor and manual.

Batteries: 3 x 1.5V (AAA)

Size: H195mm x W92mm x L55mm

Weight: Approx. 400g (including batteries)

For replacement test leads order AL04,

See page J60 for details.

Autocheck™ Multimeters

These three meters are designed with a high degree of protection. With special features such as a sliding scale impedance relative to the test voltage known as Lo-Z & Autocheck™, and transient protection for a 12kV lightning surge (1.2/50ms), makes them a leading feature test instrument. The meters are double moulded, easy to use, comfortable to hold and a safe and reliable tool for use in extremely rugged conditions. Choose from two meters, the professional multipurpose unit or a deluxe meter with extra features of range select, capacitance, diode test and continuity test.

Digital Multimeter Professional Multipurpose

- 3½ Digit 6000 Count LCD
- CAT IV 600V
- Updates 5 x per second
- Auto Hold
- Min/Max Hold
- NCV or EF Detection
- Beep-Jack™ Input Warning
- 600V General Protection on Ω , F etc.
- APO
- Fused Current Input 100KA

Feature	Range	Accuracy
DC & AC Voltage 50 to 500Hz	600mV/6/60/600/100V	$\pm 1\% + 3d$
DC & AC Current	1mA to 6/10A	$\pm 1.6\% + 3d$
Resistance 60M Ω	600/6k/60k/600k/6M	$\pm 0.9\% + 4d$
Capacitance	600n/6/60/600/2000 μ F	$\pm 1.6\% + 4d$
Frequency@6 to 600V	40Hz to 60kHz	$\pm 0.05\% + 1d$

Ordering Information

Part No: **TBM655**

For replacement test leads order AL04,
See page J60 for details.



TBM655

Digital Multimeter Deluxe Autocheck™

- 3½ Digit 6000 Count LCD
- CAT IV 1000V
- Updates 5 x per second
- Autocheck™ V & Ω
- EF Detection
- APO Idle for 3 min
- Data Hold
- Display LCD
- Size 26 x 61mm

Feature	Range	Accuracy
DC Voltage	6V/60V/600V/1000V	$\pm 1.2\% + 2d$
AC Voltage	6/60/600/1000V	$\pm 2\% + 6d$
Resistance	6k Ω , 60k Ω , 600k Ω , 6M Ω	
Diode Test	< 1.6VDC, 0.25mA, Response <100ms	$\pm 1.2\% + 4d$
Continuity	600 Ω , Threshold 50 to 250 Ω , Response < 100ms	
Capacitance	100nF, 1000nF, 10 μ F, 100 μ F, 2000 μ	$\pm 2.5\% + 5d$

Compliance and Safety

CAT IV 1000V

Ordering Information

Part No: **TBM685**

For replacement test leads order AL04,
See page J60 for details.



TBM685

Digital Multimeter Standard Autocheck™

- 3½ Digit 6000 Count LCD
- CAT IV 1000V
- Updates 5 x per second
- Autocheck™ V & Ω
- EF Detection
- APO Idle for 3 min
- Data Hold

Feature	Range	Accuracy
DC Voltage	6V/60V/600V/1000V	$\pm 1.2\% + 4d$
AC Voltage	6/60/600/1000V	$\pm 2.5\% + 6d$
Resistance	6k Ω /60k Ω /600k Ω /6M Ω	

Ordering Information

Part No: **TBM682**

For replacement test leads order AL04,
See page J60 for details.



TBM682

Digital Multimeters

Digital Multimeter General Purpose (Replaces TBM201)

An economical unit with a perfect balance of price and performance. A good general purpose unit which has most functions needed for daily use by a contractor. The instrument has many advanced features, such as auto ranging, data hold, auto power off and a high level of protection, to guard against accidental damage. The unique EF (Electric Field) detection, detects live voltage without touching!

Beep-Jack™ Input Warning, beeps as well as displays "InEr" to warn the user against possible damage to the meter due to improper connections to the μ A, mA, or A input jacks!

Features

- Electric Field Detection
- Data Hold
- 5 $\frac{1}{6}$ Digit 6000 Count LCD
- Splashproof
- PC-COMM Interface (optional)
- Continuity & Diode Test
- Compact Case
- Beep-Jack™ Input Warning

Compliance and Safety

Meets EN61010-1, UL3111-1, CSA C22.2, NO.61010.1, CE, C/V
IEC1010-1 CAT II 1000V, CAT III 600V & CAT IV 300V DC & AC
Transient Protection: Up to 6.5kV 1.2/50 μ S surge
EMC: Meets EN61326:2006

Feature	Range	Accuracy
AC Voltage	60m/600m/6/60/600/1000V	1.0% + 5d
DC Voltage	60m/600m/6/60/600/1000V	$\pm 0.2\% + 3d$
AC/DC Current	600 μ /6000 μ /60m/600m/6/10A	$\pm 1\% + 3d$
Resistance	600/6K/60K/600K/6M/60M	0.7% + 4d
Logic level Frequency	5Hz to 500kHz	0.03% + 2d
Line level Frequency	5Hz to 10kHz	0.03% + 3d



Ordering Information

Part No: **BM251**

Each unit comes with test leads, protective holster, batteries and operating manual.

Optional: **BRUA-20X** - software & cable interface;

BMH-01 - magnetic hanger

Batteries: 2 x 1.5V AAA

Size: L161 x W80 x H50mm

Weight: 340g

For replacement test leads order AL04,

See page J60 for details.

Digital Multimeter Practical Professional

A professional digital multimeter, with a large clear display, at an affordable price.

The display updates 3 times per second and features all the basic multimeter requirements with data hold, and Beep-Jack™ input warning. Choose according to your pocket between these two professional meters.

Features

- 1000V Protection
- 3 $\frac{3}{4}$ Digital 4000 Count LCD
- Max Data Hold/Diode Tester
- Relative Zero
- Beep-Jack™ Input Warning
- Splash Proof
- Diode Test

Compliance and Safety

IEC61010-1 (1995) CAT III 600V, CAT II 1000V. Transient protection 6kV.

Overload protection V = 1050Vrms; mA = 0.5A/250V Fuse;

A = 15A/250V HRC Fuse; Others ranges 600Vrms

Meets EN61326 (1997, 1998/A1), EN61000-4-2 (1995), EN61000-4-3 (1996).

Feature	Range	Accuracy
AC/DC Voltage	400m/4/40/400/1000V	$\pm 1.5\% \pm 5d$
AC/DC Current	400 μ /4000/40m/400m/4/10A	$\pm 1.8\% \pm 4d$
Resistance	400/4K/40K/400K/4m/40Mohms	$\pm 1.0\% \pm 4d$
Frequency	5Hz to 1MHz	$\pm 0.5\% \pm 4d$
Capacitance	400n/4 μ /40 μ /400 μ /4000 μ F	$\pm 3.5\% \pm 6d$



TBM805

Ordering Information

Part No: **TBM805**

This unit comes in a gift box with leads, operating manual, installed batteries and protective holster.

Batteries: 2 x 1.5V AAA

Size: L186 x W87 x H35.5mm or

L198 x W97 x H55mm with holster

Weight: 296g (396g with holster)

For replacement test leads order AL04,

See page J60 for details.

Professional Multimeters

Digital Multimeter True RMS Practical Professional

A professional digital multimeter, with a large clear display, at an affordable price. The display updates 3 times per second and features all the basic multimeter requirements with data hold, and Beep-Jack™ input warning. Choose according to your pocket between these two professional meters.

Features

- 1000V Protection
- 3½ Digital 4000 Count LCD
- Max Data Hold/Diode Tester
- Relative Zero
- Jack Guard
- Splash Proof
- Diode Test
- Temperature

Compliance and Safety

IEC61010-1 (1995) CAT III 600V, CAT II 1000V. Transient protection 6kV.
Overload protection V = 1050Vrms; mA = 0.5A/250V Fuse;
A = 15A/250V HRC Fuse; Others ranges 600Vrms
Meets EN61326 (1997, 1998/A1), EN61000-4-2 (1995), EN61000-4-3 (1996).

Feature	Range	Accuracy
AC/DC Voltage	400m/4/40/400/1000V	± 1.5% ± 5d
AC/DC Current	400µ/4000/40m/400m/4/10A	± 1.8% ± 4d
Resistance	400/4K/40K/400K/4m/40Mohms	± 1.0% ± 4d
Frequency	5Hz to 1MHz	± 0.5% ± 4d
Capacitance	400n/4µ/40µ/400µ/4000µF	± 3.5% ± 6d
Temperature	-20°C to 300°C	± 2% ± 3°C/6°F



TBM807

Ordering Information

Part No: **TBM807**

Each unit comes in a gift box with leads, operating manual, installed batteries and protective holster.

Batteries: 2 x 1.5V AAA

Size: L186 x W87 x H35.5mm or
L198 x W97 x H55mm with holster

Weight: 296g (396g with holster)

For replacement test leads order AL04,
See page J60 for details.

Digital Multimeter Professional (Replaces TBM811)

This meter is the mainstay of the CABAC range of multimeters and is designed for use in heavy industry such as mining. Robust, dustproof and splash-proof, this meters has all the basic features a professional tradesman will require from a DMM. If you are looking for a reliable meter that will give many years of service then consider this excellent, rugged meter.

Features

- Dual Display
- 1000V Protection
- 9 9/10 Digital 10000 Count
- Data Hold/Diode Tester
- Beep-Jack™ Input Warning
- Current Range Fused (600V HBC Fused)
- Bargraph
- USB Interface (optional)

Compliance and Safety

IEC61010-1 2nd Edition (2001)
CAT IV 1000V.
Transient protection 8kV.

Overload protection

V = 1050Vrms; mA = 0.63A/500V
HRC Fuse; A = 12.5A/550V HRC
Fuse; Others ranges 600Vrms

Meets EN61326 (1997, 1998/A1),
EN61000-4-2 (1995),
EN61000-4-3 (1996).



Optional Accessories

RS 232 Optical Cable with Special
Software (for PC running XP).

Part No: **TBR85X**

USB to Serial Adaptor.

Part No: **USB2SER**

Feature	Range	Accuracy
AC/DC Voltage	60m/600m/9.999/99.99/999.9 V	±1% +4d
AC/DC Current	600µ/6000µ/60m/600m/6/10 A	± 0.8% +4d
Resistance	600/6K/60K/600K/6M/60M	0.5% +4d
Capacitance	60n/600n/6µ/60µ/600µ/6m/25m F	± 2% +3d
Logic level Frequency:	15Hz to 1kHz	± 0.04% + 4d
Line level Frequency:	5Hz to 1MHz	0.004% + 4d

Ordering Information

Part No: **BM821**

Each unit comes in a gift box with leads, operating manual, batteries installed and protective holster.

Battery: Standard 1 x 9V 6F22

Size: L186 x W87 x H35.5mm or
L198 x W97 x H55mm with holster

Weight: 340g (430g with holster)

For replacement test leads order AL04,
See page J60 for details.

Data Logger & Professional Multimeters

Digital Multimeter Professional True RMS (Replaces TBM812)

This meter is another mainstay of the CABAC range of multimeters and is designed for use in heavy industry such as mining. Robust, dustproof and splash-proof, this meter has all the basic features a professional tradesman will require from a DMM and it also has a LIFETIME WARRANTY. If you are looking for a reliable meter that will give many years of service then consider this excellent, rugged meter.

Features

- Dual Display
- 1000V Protection
- 4 Digits 10000 Counts
- Data Hold/Diode Tester
- Current Range Fused (600V HBC Fuses)
- Beep-Jack™ Input Warning
- Bargraph
- USB PC Interface (optional)

Compliance and Safety

IEC61010-1 2nd Edition: CAT IV 1000V.
Transient protection 12kV.

Overload protection:

V = 1050Vrms;
mA = 1A/600V HBC Fuse;
A = 10A/600V HBC Fuse;
Others ranges 600Vrms
Meets EMC EN61326:2006.

Optional Accessories

USB Optical Cable with Special Software Part.

Part No: **BU-82X**

Magnetic Hanger. Part No: **BMH-01**

Feature	Range	Accuracy
AC/DC Voltage	60m/600m/9.999/99.99/999.9 V	±1% +4d
AC/DC Current	600μ/6000μ/60m/600m/6/10 A	± 0.8% +4d
Resistance	600/6K/60K/600K/6M/60M	0.5% +4d
Capacitance	60n/600n/6μ/60μ/600μ/6m/25m F	± 2% +3d
Logic level Frequency:	15Hz to 1kHz	± 0.04% + 4d
Line level Frequency:	5Hz to 1MHz	0.004% + 4d



Ordering Information

Part No: **BM822**

Each unit comes in a gift box with leads, operating manual, battery installed and protective holster.

Battery: Standard 1 x 9V 6F22

Size: L186 x W87 x H35.5mm or
L198 x W97 x H55mm with holster

Weight: 340g (430g with holster)

For replacement test leads order AL04,
See page J60 for details.

Digital Multimeter Professional True RMS (Replaces TBM817)

Ideal for most industrial uses, displaying many electrical features such as temperature. The USB optical interface and software allows downloading to or recording of data on a PC. A reliable, stable, robust, dust and splash proof digital multimeter that will give years of reliable service.

Features

- Dual displays
- True RMS
- 9-9/10 Digital 10000 Counts
- Beep-Jack™ Input Warning
- The unique EF (Electric Field) detection, detects live voltage without touching!
- Data Hold/Crest Hold
- Record Min/Max/MAX-MIN/AVG
- Fused Current Range (600V HBC fuses)
- Bargraph
- USB PC Interface (optional)

Compliance and Safety

IEC61010-1 2nd Edition: CAT IV 1000V.
Transient protection 12kV.

Overload protection:

V = 1050Vrms;
mA = 1A/600V HBC Fuse;
A = 10A/600V HBC Fuse;
Others ranges 600Vrms
Meets EMC EN61326:2006

Optional Accessories

USB Optical Cable with Special Software. Part No: **BU-82X**

Magnetic Hanger. Part No: **BMH-01**

Feature	Range	Accuracy
AC/DC Voltage	60m/600m/9.999/99.99/999.9 V	± 1.0% +4d
AC/DC Current	600μ/6000μ/60m/600m/6/10 A	± 0.8% +4d
Resistance	600/6K/60K/600K/6M/60M Ohm	± 0.5% +4d
Frequency	5Hz to 1.00KHz	+ 4d
Capacitance	60n/600n/6μ/60μ/600μ/6m/25m F	± 2.0% +3d
Logic level Frequency:	15Hz to 1kHz	± 0.04% + 4d
Line level Frequency:	5Hz to 1MHz ± 0.004%	± 0.004% + 4d
Temperature	-50°C to 1000°C	± 0.3% +2d
Conductance (nS):	0.01 to 99.99 nS	± 0.8% + 10d



Ordering Information

Part No: **BM827**

Each unit comes in a gift box with test leads, protective holster, installed battery and operating manual.

Battery: 1 x 9V 6F22

Size: L186 x W87 x H36mm or
L208 x W103 x H64.5mm with holster

Weight: 340g (635g with holster)

For replacement test leads order AL04,
See page J60 for details.

Professional Multimeters

Digital Multimeter Professional True RMS Data Logger (Replaces TBM515)

A unique meter with all the features needed by a professional plus a recording capability, two control buttons for time select, stop, start, call back, pause, and up and down scrolling to log 43,500 readings for dual displays and 87,000 for single display. Has similar features to the BM822, plus a temperature range, AC+DC voltage, current, nS conductance, MAX/MIN/MAX-MIN Record, MAX/MIN/MAX-MIN Crest (Peak Hold), and the robustness, safety and reliability. The USB optical interface and software allows downloading to or recording of data on a PC. This is a compact logger with a unique and easy to use feature for recording data such as voltage, temperature and current.

Features

- Dual displays
- 1000V Protection
- True RMS
- Auto LoZ Volt & OHMs function selection
- 9-9/10 Digital 10000 Count LCD
- Backlit Display
- 43,500 Point Data Logger for dual displays; 87,000 point Data Logger for single display
- Bargraph
- Beep-Jack™ Input Warning
- The unique EF (Electric Field) detection, detects live voltage without touching!

Optional Accessories

USB Optical Cable with Special Software .

Part No: **BU-82X**

Magnetic Hanger.

Part No: **BMH-01**

Feature	Range	Accuracy:
AC/DC/AC+DC	Voltage 60m/600m/9.999/99.99/999.9 V	±1% +4d
AC/DC/AC+DC	Current 600μ/6000μ/60m/600m/6/10 A	± 0.8% +4d
Resistance	600/6K/60K/600K/6M/60M Ohm	± 0.5% +4d
Capacitance	60n/600n/6μ/60μ/600μ/6m/25m F	± 2% +3d
Logic level Frequency:	15Hz to 1kHz	± 0.04% + 4d
Line level Frequency:	5Hz to 1MHz	± 0.004% + 4d
Temperature	-50°C to 1000°C	± 0.3% +2d
Conductance (nS):	0.01 to 99.99 nS	± 0.8% + 10d

Compliance and Safety

IEC61010-1 2nd Edition: CAT IV 1000V.

Transient protection 12kV.

Overload protection:

V = 1050Vrms;

mA = 0.44A/1000V HBC Fuse;

A = 11A/1000V HBC Fuse;

Others ranges 1000Vrms

Meets EMC EN61326:2006



Ordering Information

Part No: **BM525**

Each unit comes with test leads, protective holster, installed battery and operating manual.

Batteries: 1 x 9V 6F22

Size: L208 x W103 x H64.5mm or

L198 x W97 x H55mm with holster

Weight: 635g with holster

For replacement test leads order AL04,

See page J60 for details.

Digital Multimeter Top of the Range Professional True RMS

A specialised instrument that is accurate and feature packed. The high-count display can provide up to six digits. The bargraph updates 60 times per second while the fast mode display updates 3 times per second, giving reliable and high speed information. Packed with special features such as min/max recording, crest display, dual temperature inputs, %4-20 mA current loop and audible, visual input warnings and more.

Features

- 1000V Protection
- True RMS / Super Accurate
- 5% Digital 50,000 Count LCD
- Data Hold/Peak Hold
- Backlit Display
- Bargraph
- 100kHz Bandwidth
- Record Min/Max

Optional Accessories

PC-COMM Interface.

Part No: **BRUA-85X9**

Compliance and Safety

IEC61010-1 2nd Edition: CAT III 1000V

& CAT IV 600V

Transient protection 8kV.

Overload protection:

V = 1050Vrms;

mA = 0.44A/1000V HBC Fuse;

A = 11A/1000V HBC Fuse;

Others ranges 1000Vrms

Meets EMC EN61326:2006



Feature	Range	Accuracy
AC/DC Voltage	50m/500m/5/50/500/1000V	± 0.8% +20d
AC/DC Current	Current 500μ/5000μ/50m/500m/5/10A	± 0.5% +50d
Resistance	50/500/5K/500K/5M/50MΩ	± 0.07% +10d
Frequency Line	5Hz ~ 200kHz	± 0.002% +4d
Logic	5Hz ~ 2MHz	± 0.002% +4d
Capacitance	50n/500n/5μ/50μ/500μ/9999μF	± 2.0% +3d
Temperature	-50°C to 1000°C	± 0.3% +1°C

Ordering Information

Part No: **BM859CF9**

Each unit comes in a gift box with test leads, protective holster, installed batteries, operating manual & one type-k thermocouple.

Battery: 1 x 9V 6F22

Size: L198 x W97 x H55mm with holster

Weight: 500g including holster

For replacement test leads order AL04,

See page J60 for details.

Clamp Current Meters

SELECTION CHART

FEATURES	VAC300	VDCC600	T2600	BM111M	BM127M	T9809	T20078	T9901	T98	T8M115	T8M116	T8M135	T8M118	T9703	T2102	T9005	T9105	T2608	T5637
Jaw Size	33	33	12	26	28	30	31	42	42	45	45	45	45	23	28	42	35	57	35
Display	Analogue	Digital	Digital	Digital	Digital	Digital	Digital	Digital	Digital	Digital	Digital	Digital	Digital	Digital	Digital	Digital	Digital	Digital	Digital
LCD Display Counts			3999	4000	4000	4000	1999	4000	1999	4000	4000	4000	6000	2000	3999	10000	10000	4000	9999
LCD Display Digits			3 3/4	3 3/4	3 3/4	3 3/4	3	3 3/4	3 3/4	3 3/4	3 3/4	3 3/4	3 5/6	3 1/2	3 3/4	4	4	3 3/4	4
Backlight			✓					✓	✓			✓				✓	✓		
Bargraph						✓									✓	✓	✓	✓	
AC Current	300	600	200	600	400	100	150	600	1000	1000	1000	1000	2000	200	400	600	1000	2000	35
DC Current															200	400	600	1000	2000
AC Voltage	600	600	700	600	600	400		600	750	600	600	600	600	600	600	600	600	750	
DC Voltage	60		1000	600			600	600	1000	600	600	600	600	600	600	600	600	1000	
Auto Ranging			✓	✓	✓			✓	✓	✓	✓	✓	✓	✓	✓	✓	✓	✓	✓
Relative Zero				✓				✓	✓	✓	✓	✓	✓		✓	✓	✓	✓	✓
APD			✓	✓	✓			✓	✓	✓	✓	✓	✓	✓	✓	✓	✓	✓	✓
Resistance	100Ω	200Ω	40M	40M	40M			40M	2k	40M	40M	1k	6M	40M	400	40M	40M	40M	0.025 - 1.5 k
Frequency			100k	50k	50k			5M				500	50k			400	400	400k	
Capacitance (μF)			4	3000	4000			100				2000				999.9	999.9	40	
Temperature C					-20 to 300				-40 to 750			-50 to 300		1370		-40 to 1200	-40 to 1200		
True RMS										✓	✓	✓	✓			✓	✓	✓	✓
Diode Test				✓	✓			✓	✓	✓	✓		✓	✓	✓	✓	✓	✓	✓
Peak /Max Hold				✓												✓	✓	✓	
Data Hold	✓	✓	✓	✓		✓	✓	✓	✓	✓	✓	✓	✓	✓	✓	✓	✓	✓	✓
Min/Max Recording						✓										✓	✓	✓	✓
Continuity Buzzer			✓	✓	✓	✓		✓	✓	✓	✓	✓	✓	✓	✓	✓	✓	✓	✓
Auto Null (leads)				✓											✓				
Special Feature						Leakage Current	Leakage Current	EF				Logger THD	EF		With Splitter	Inrush Current	Inrush Current		
CAT III	300V	300V	600V	600V	600V	300V	600V	>1000V	600V	600V	600V	600V	600V	300V	300V	>1000V	>1000V	600V	300V
CAT IV	150V	150V	300V	300V	300V	150V	300V	600V	300V	300V	300V	300V	300V	150V	150V	600V	600V	300V	150V
Warranty Years	1	1	1	1	1	1	1	1	1	1	1	1	1	1	1	1	1	1	1

The range of clamp meters covers a wide variety of needs from a basic low cost unit, to a sophisticated device with multi functions and many features. A clamp meter with voltage and resistance range can fulfill most general requirements for electrical measurement in the field. For a specialist there are features of temperature, AC/DC measurement, high current or leakage current. Generally clamp meters are easy to use and fundamental for electrical measurement. The latest additions to the range are a new generation of feature packed clamp meters including a range of clamp data loggers and power meters. A new family has been introduced with in-rush current measurement and many other attractive features. This follows on the goal of supplying reliable, safe and a continually improving range of test equipment.

Analogue & Open Jaw Clamp Meters

Analogue Clamp Meter 300A AC

- CAT II 600V, CAT III 300V
- 300Amp AC Clamp
- Ohms Measurement
- 600V AC Voltage Measurement
- Needle Lock

Feature	Range
AC Voltage	150/300/600V +/- (4%1)
DC Voltage	60V +/- (4%+1)
AC Amps	6/15/60/150/300A +/- (4%+1)
Ohms	x1Ω / x 100Ω
Jaw Size	33mm

VAC300

Ordering Information

Part No: **VAC300**
 Each unit comes in a soft pouch with battery, test leads and manual.
 Battery: 1.5V SUM
 Size: L285 x W100 x H46mm
 Weight: 230g



Digital Clamp Meter 600A AC

- CAT II 600V, CAT III 300V
- 600Amp AC Clamp
- Audible Ohms
- 600V AC Voltage Measurement
- Data Hold

Feature	Range
AC Voltage	200V-600V +/- (1.2%+5)
AC Amps	200A-600A +/- (2%+5)
Resistance	200 Ω +/- (1.5%+2)
Continuity	YES
Data Hold	YES
Jaw Size	33mm

VDC600

Ordering Information

Part No: **VDC600**
 Each unit comes in a soft pouch with battery, test leads and manual.
 Battery: 1 x 9V 6F22
 Size: L285 x W100 x H46mm
 Weight: 230g



Digital Clamp Meter Open Jaw 200A AC

A handy instrument for quick AC current measurement to 200 Amp and various digital multimeter functions. The casing is designed for easy use and storage of the test leads. The meter has a number of extra features of AC/DC voltage, capacitance, frequency, duty cycle, continuity, diode test and incorporates auto or manual ranges. An LCD backlight assists reading in low light areas. It has more features like relative measurements and data hold.

Features

- Easy to Use / Access
- 3½ Digit 3999 Count LCD
- Auto Off
- Data Hold
- Duty Cycle
- Relative Zero

Compliance and Safety

IEC610101-1 and -2-032 CAT III 600V
 European Community Directives 89/336/EEC (EMC)
 And 73/23/EEC (low voltage), CE

Feature	Range	Accuracy
AC Current	200A	± 3.0% ± 3d
AC Voltage	4/40/400 V/700 V	± 0.8% ± 5d
DC Voltage	4/40/400 V/1000 V	± 0.8% ± 3d
Resistance	400/4k/40k/400k/4m/40MΩ	± 1.2% ± 1d
Frequency	10 Hz to 100kHz	± 2.0% ± 1d
Capacitance	4n/400n/4μ/10μF	± 4.0% ± 10d
Jaw Size	12mm	

Ordering Information

Part No: **T2600**
 Each unit comes in a soft pouch with battery, test leads and manual.
 Battery: 1 x 9V 6F22
 Size: L193 x W68 x H43mm
 Weight: 230g
 For replacement test leads order AL04,
 See page J60 for details.



AC Clamp Meters

Digital Clamp 600A AC & Multimeter (Replaces TBM3030)

A handy auto ranging clamp amp meter, with multimeter functions with a proven track record. Ideal for general purpose electrical work. It is well priced, compact and easily fits into a pocket.

Features

- 3 $\frac{3}{4}$ Digit 4000 Counts
- Max Data Hold
- Relative Zero

Feature	Range	Accuracy
AC Current	40/400A	$\pm 1.9\% + 8d$
AC Voltage	4/40/400/600 V	$\pm 1.5\% + 5d$
DC Voltage	400m/4/40/400/600 V	$\pm 0.5\% + 3d$
Resistance	400/4k/40k/400k/4M/40M Ω	$\pm 1.0\% + 4d$
Frequency	5 Hz to 50kHz	$\pm 0.5\% + 4d$
Capacitance	400n/4 μ /40 μ /400 μ /4000 μ F	$\pm 3.5\% + 6d$
Jaw Size	28mm	

Compliance and Safety

IEC61010-2-032, (1994), CAT II 600V, CAT III 300V (the category being upgraded) Pollution Degree 2, EN61326 1997, (1998/A1), EN61000-4-3 (1996)



Ordering Information

Part No: **BM111M**

Each unit comes in a gift box with operating manual, batteries installed and soft carry pouch.

Batteries: 2 x 1.5V LR44

Size: L190 x W63 x H32mm

Weight: 187g

For replacement test leads order AL04, See page J60 for details.

Dual Scale Clamp on Digital Multimeter 600A AC (Replaces TBM126)

A full Digital Multi-meter and a Clamp on Amp Meter all in one compact unit. It is like having two full function meters in one, in a size that will fit in the palm of your hand! This is a revolutionary unit which puts huge measuring capability into a small easy to use instrument. The top scale measures amps, and the lower scale is a full accurate multimeter.

Features

- 3 $\frac{3}{4}$ Digit 4000 Counts
- Dual Measurement
- Dual LCD Display
- Max Data Hold
- Diode Tester

Feature	Range	Accuracy
AC Current	40/400A	$\pm 1.9\% + 8d$
AC Voltage	4/40/400/600 V	$\pm 1.5\% + 5d$
DC Voltage	400m/4/40/400/600 V	$\pm 0.5\% + 3d$
Resistance	400/4k/40k/400k/4M/40M Ω	$\pm 1.0\% + 4d$
Temperature	-20°C to 300°C	$\pm 0.5\% + 4d$
Frequency	5 Hz to 50kHz	$\pm 0.5\% + 4d$
Capacitance	400n/4 μ /40 μ /400 μ /4000 μ F	$\pm 3.5\% + 6d$
Jaw Size	28mm	

Compliance and Safety

IEC61010-2-032, (1994), CAT III 600V Pollution Degree 2, EN61326 1997, (1998/A1), EN61000-4-3 (1996)



Ordering Information

Part No: **BM127M**

The unit is supplied with a pouch carrying case, test leads, thermocouple, battery and operating manual.

Batteries: 2 x 1.5V LR44

Size: L190 x W63 x H32mm

Weight: 187g

For replacement test leads order AL04, See page J60 for details.

Earth Leakage Clamp Meters/AC Clamp Meters

Digital Leakage Current Clamp 200A AC

A very accurate compact leakage current clamp meter with numerous features at an attractive price. It can be used for leakage current or current measurements up to 100A. This is a handy device for the professional who needs to make very accurate low current measurements.

Features

- 3½ Digit 4000 Count LCD
- Bargraph
- 10µA High Resolution 40mA Range
- 50/60Hz Filter
- Overload Protection
- Max/Min Data Hold

Feature	Range	Accuracy
AC Current	40m/400m/4/40/80/100A	±2.5% +15d
AC Voltage	400V	±2.0% +4d
Resistance	40 ~ 400Ω	±1.0% +2d
Continuity	40 Ω Threshold	
Jaw Size	30mm	

Compliance and Safety

IEC61010-1 CAT II Pollution Degree 2

Ordering Information

Part No: **T9809**

The unit comes in a carry bag with user manual, test leads and installed battery.

Battery: 2 x 1.5V AA

Size: L210 x W61 x H35.6mm

Weight: 200g

For replacement test leads order AL04, See page J60 for details.

Unit includes Earth Splitters, Part No M920E.



Digital Leakage Current Clamp 150A AC

The T2007B is a compact leakage clamp meter capable of measuring currents from 15mA to 150A.

Features

- 3½ Digit 1999 Count LCD
- Updates 2-3/sec
- Low Battery Indication
- Data Hold
- Manual Range Selection

Compliance and Safety

IEC61010-2-032 CATIII 600V

Feature	Range	Accuracy
AC Current	200 mA, 150A	± 2% ± 5 digits
Frequency	50 or 60 Hz	
Jaw Size	31mm	

Ordering Information

Part No: **T2007B**

The unit comes in a gift box with instruction manual and soft pouch.

Batteries: 2 x 1.5V AAA

Size: L 176 x W 59 x H28 mm

Weight: 150g

For replacement test leads order AL04, See page J60 for details.

Unit includes Earth Splitters, Part No M920E.



Digital Current Clamp 600A AC

This 600A AC clamp is a new generation of clamp meter with some exceptional features such as NCV (non - contact voltage detection). Compact, with a double moulded housing, this meter is attractive, reliable and feature filled.

Features

- 3½ Digit 4000 Count LCD
- 10M Input Impedance
- Data Hold/Relative
- Frequency
- Duty Cycle
- Auto Power Off
- Diode Test
- Backlight
- Double Moulded Housing
- EF or NCV test 100 to 600V

Compliance and Safety

EN61010 CAT IV 600V

pollution degree 2, CE

Feature	Range	Resolution	Accuracy
DC Voltage	400m/4/40/400/600 V	100V	± 0.5% ± 1 Dgts
AC Voltage	400m/4/40/400/600 V	0.1 to 400 mV	± 1% ± 4 Dgts
AC Current	40/400/600 A	0.01 A	± 3.5% ± 5 Dgts
Resistance	400/4k/40k/400k/4M/40MΩ	0.1Ω	± 3% ± 4 Dgts
Capacitance	40n/400nF/4/40/100µF	0.1n F	± 3% ± 10 Dgts
Frequency	5/50/5k/50k/500k5MHz	0.01 Hz	±0.1% ± 3 Dgts
Duty Cycle	2Hz to 10Hz; 10% to 90%	0.1%	±2% ± 5 Dgts
Jaw Size	32mm		

Ordering Information

Part No: **T9001**

The unit comes in a gift box with test leads and operating manual.

Battery: 9V 6F22 giving ± 200hrs

Size: L233 x W80 x H43mm

Weight: 344 g with the battery

For replacement test leads order AL04, See page J60 for details.



AC Clamp Meters

Digital Clamp Meter 1000A AC (Replaces T98)

A well priced AC current meter clamp for general industrial use with a large jaw. Accurate on lower ranges due to current selection of 20, 200 and 1000A. The meter has the added feature for temperature and it comes in an attractive robust case.

Features:

- 3 ½ digit 1999 count LCD
- Data hold
- Continuity test
- Diode tester
- Backlit display

Safety and Compliance

Conforms to IEC61010-1 CAT II 1000V/CAT III 600V, CE

Feature	Range	Accuracy
AC Current	20/200/1000A	±2.0% ±5d
AC Voltage	750V	±1% ±2d
DC Voltage	1000V	±1% ±2d
Resistance	200/2000Ω	±1% ±3d
Temperature	-40°C to 750°C	±1% ±3d
Jaw size	42mm	

Ordering Information:

Part No: **C2001C**

The C2001C is supplied in a gift box with soft pouch, test leads, instruction manual, type-k thermocouple & batteries.

Batteries: 1 x 9V 6F22

Size: 250 x 99 x 43mm

Weight: ± 460g

For replacement test leads order AL04, See page J60 for details.



Digital Clamp Meter 1000A AC & True RMS

Two unique AC clamp meters, packed with features that will provide the user with reliable test information. Voltage input impedance is 10MΩ, 30pF. The unit is protected against overloads i.e. 1000A and 600V AC/DC.

Features

- 3¾ Digit 4000 Count LCD
- Data Hold
- Relative Zero
- APO idle 30 min
- Power Consumption APO TBM115 = 40μA, TBM116 = 190mA
- Updates 3 x per second

Compliance and Safety

IEC61010-2-032 2nd Ed. (2002), UL3111-2-032 (1999)
CAT III 600V Pollution Degree 2, EN61326 1997, 1998/A1),
EN61000-4-3 (1996)

Feature	Range	Accuracy
DC Voltage	400 mV/ 4/ 40/ 400 V/ 600V	1.7% +3d
AC Voltage	50-60 Hz 4/ 40/ 400V/ 600V	2.0% +5d
Resistance	400/ 4k/ 40k/ 400k/ 4M/ 40M	1.5% +4d
Continuity	400Ω 0.4V (Audible; 10Ω to 120Ω)	1.5% +5d
AC Current	400A, 1000A 50/60Hz	1.5% +5d
TBM116 Crest Factor	< 2.6:1 @ full scale & < 5.2:1 @ ½ scale	
Jaw Size	45mm	

Ordering Information

Part No:

TBM115 & TBM116 (True RMS)

Each unit is supplied in a gift box with operating manual, batteries installed and soft carry pouch.

Batteries: 2 x 1.5V AAA

Fuse: None

Size: L224 x W78 x H40mm

Weight: 220g

For replacement test leads order AL04, See page J60 for details.



AC Clamp Meters

Digital Clamp Meter 2000A AC & True RMS

A unique AC 2000A clamp meters, packed with features such as Autocheck™ (automatic DCU, ACU & Ω detection) and Lo-Z (drains ghost voltages in auto-V Ω position).

Features

- 3½ Digit 6000 Count LCD
- Autocheck™ V & Ω
- Electric Field Detection (EF).
Antenna on top side of stationary jaw
- Data Hold
- APO, idle 3 min
- Updates 5 x per second
- Back light
- True RMS

Compliance and Safety

IEC61010-2-032 2nd Ed. (2002), UL3111-2-032 (1999) CAT III 600V Pollution Degree 2, EN61326 1997, 1998/A1, EN61000-4-3 (1996)

Feature	Range	Accuracy
AC/DC Voltage	6, 60, 600V	$\pm 2.0\% + 5d$
AC Current	2000A 50/60Hz	$\pm 1.5\% + 5d$
Resistance	6k, 60k, 600k, 6M Ω	$\pm 2.0\% + 4d$
Continuity	600 Ω 0.4V (Audible; 10 Ω to 2500 Ω)	$\pm 2\% + 8d$
Capacitance	100nF, 1000nF, 10 μ F, 100 μ F, 2000 μ F	$\pm 3.5\% + 5d$
Frequency	10Hz to 50kHz	$\pm 0.5\% + 4d$
Jaw size	45mm	

Ordering Information

Part No: **TBM118**

The unit comes in a gift box with operating manual, test leads, batteries installed and soft carry pouch

Batteries: 2 x 1.5V AAA

Fuse: None

Size: L224 x W78 x H40mm

Weight: 220g

For replacement test leads order AL04, See page J60 for details.



Digital Clamp Logger 1000A AC & True RMS

Ideal for quick data logging and checking maximum and minimum demand over a period.

Features

- Voltage 6000, Hz & Ω 9999, Amp 4000 Counts Display
- Stand Alone 5400 Points Hi-Lo Data Logging
- Update Rate Hz - 2/sec, V, A, Ω , Temp - 4/sec
- APO: Idle for 17 min
- Hi-Lo Logging
- Auto Hold
- Backlight

Compliance and Safety

IEC61010-2-032 2nd Edition (2002), UL3111-2-032 (1999) CAT III 600V Pollution Degree 2, EMC: EN61326 1997, 1998/A1, EN61000-4-3 (1996)

Feature	Range	Accuracy
AC/DC Voltage	600V	$\pm 1.5\% + 5d$
Resistance	999.9 Ω	$\pm 1.0\% + d$
Continuity	50 Ω to 250 Ω , 0.4V (Audible; 10 Ω ~ 120 Ω)	$\pm 1.5\% + 5d$
AC Current	40, 400, 1000A	$\pm 2.0\% + 5d$
Temperature	-50° to 300°C, -58° to 572°F	$\pm 2\% + 3^{\circ}C$
Frequency	5Hz to 500Hz	$\pm 0.5\% + 4d$
THD%-R*	0% to 99.9%	$\pm 5\% + 6d$
Jaw size	45mm	

Ordering Information

Part No: **TBM135**

The unit comes in a gift box with operating manual, batteries installed, test leads, type k - thermocouple and soft carry pouch.

Batteries: 2 x 1.5V AAA

Size: L224 x W78 x H40mm

Weight: 224g

Optional Software and Interface Cable

Part No: **TBR13X**

For replacement test leads order AL04, See page J60 for details.



AC/DC Clamp Meters

Digital Clamp Meter 200A AC/DC

A great little compact auto ranging clamp meter that is easy to carry and use in dimensionally restrictive areas. Packed with most of the standard requirements, this is a super instrument for the professional at a superb price.

Features

- 3½ Digit 2000 Count LCD
- Zero Facility
- Diode Test
- Continuity Check < 25Ω
- APO
- Data Hold
- Low Battery Indication
- Temperature Range

Compliance and Safety

IEC61010-1, IEC61010-02-031 CAT II 600V
EMC-EN50081-1, EN50082-1

Feature	Range	Accuracy
AC/DC Current	40/200A	±5% +10d
AC/DC Voltage	600V	±1.5% +3d
Resistance	40MΩ	±1.5% +2d
Temperature	1370°C or 2000°F	±3% +3d
Capacitance	200μF	±6.0% +7d
Jaw Size	23mm	

Ordering Information

Part No: **T9703**

The unit comes in a soft case with leads, type-k thermocouple and 9V battery.

Batteries: 1 x 9V 6F22

Size: L181 x W43 x H30mm

Weight: 225g

For replacement test leads order AL04,
See page J60 for details.



Digital Clamp Meter 400A AC/DC

A high quality AC/DC mini current clamp, designed to fit comfortably in your pocket. Features such as range selection and relative zero can be useful. The digits in the display are 9mm high for easy reading.

Features

- IEC61010 CAT II 600V
- 3¾ Digit 3999 Count LCD
- 42 Segment Bargraph
- Data Hold
- Continuity Test
- Relative Zero

Compliance and Safety

IEC61010 CAT II 600V Pollution Degree 2
CE (EMC-LVD)

Feature	Range	Accuracy
AC/DC Current	40/400A	±2.5% +5d
AC/DC Voltage	400/600V	±1%+ 5d
Resistance	400Ω	±1.0% +5
Jaw Size	28mm	

Ordering Information

Part No: **T2102**

The unit comes in a soft material case with leads & M920 line splitter.

Battery: 2 x 1.5V AAA

Size: H194 x W72 x L35mm

Weight: 210g

For replacement test leads order AL04,
See page J60 for details.



M920E
Line Splitter

AC/DC Clamp Meters

Digital Current Clamp Meter 600A AC/DC True RMS

This 600A AC/DC clamp is of a new generation family of feature packed clamp meters. It has unique features like in-rush current measurement, crest or peak hold, min/max recording, etc. Ideal for the electrician or refrigeration technician who needs to measure the starting current of a motor.

Features

- 4 Digit 10 000 Count LCD
- True RMS
- 1M Ω Voltage Input Impedance
- Data Hold/Relative/Crest Hold
- Min/Max Recording.
- In-rush Current Mode (100 ms)
- Frequency
- Temperature Type-k thermocouple
- Diode Test
- Auto Power Off
- Low Battery Indication
- Double Moulded Housing

Compliance and Safety

EN61010 CAT IV 600V pollution degree 2, CE

Feature	Range	Resolution	Accuracy
DC Voltage	600.0V	0.1V	$\pm 1\% \pm 5$ Dgts
AC Voltage	600V	0.1V	$\pm 1\% \pm 5$ Dgts
DC Current	600A	0.1A	$\pm 2\% \pm 5$ Dgts
AC Current	600A	0.1A	$\pm 2\% \pm 5$ Dgts
Resistance	0 to 999.9; 1000 to 9999 Ω	0.1 Ω /1 Ω	$\pm 1.5\% \pm 5$ Dgts
Capacitance	0 to 999.9 μ F	0.1 μ F	$\pm 5\% \pm 10$ Dgts
Frequency	20 to 400.0Hz	0.1Hz	$\pm 0.5\% \pm 5$ Dgts
Temperature	-40 to 1200 $^{\circ}$ C	1 $^{\circ}$ C	$\pm 0.5\% \pm 1^{\circ}$ C
Jaw Size	35mm		



Ordering Information

Part No: **T9005**

The unit comes in a gift box with test leads, type-k thermocouple with adaptor and operating manual.

Batteries: 1 x 9V 6F22 giving ± 50 hrs

Size: L233 x W80 x H43mm

Weight: 346g including battery

For replacement test leads order AL04, See page J60 for details.

Digital Current Clamp Meter 1000A AC/DC True RMS

The top of the range of our new generation style clamp meters. Feature packed with in-rush current measurement, peak and data hold, temperature, etc. Ideal for measuring motor start up current.

Features

- 4 Digit 10 000 Count LCD
- True RMS
- 1M Ω Input Impedance
- Data Hold/Relative/Peak Hold
- Min/Max Recording
- In-rush Current Mode (100 ms)
- Frequency
- Temperature Type-k Thermocouple
- Auto Power Off
- Diode Test
- Low Battery Indication
- Double Moulded Housing

Compliance and Safety

EN61010 CAT IV 600V pollution degree 2, CE

Feature	Range	Resolution	Accuracy
DC Voltage	600V	0.1V	$\pm 1\% \pm 5$ Dgts
AC Voltage	600V	0.1V	$\pm 1\% \pm 5$ Dgts
DC Current	1000A	0.1A	$\pm 2\% \pm 5$ Dgts
AC Current	1000A	0.1A	$\pm 2\% \pm 5$ Dgts
Resistance	0 to 999.9; 1000 to 9999 Ω	0.1 Ω /1 Ω	$\pm 1.5\% \pm 5$ Dgts
Capacitance	0 to 999.9 μ F	0.1 μ F	$\pm 5\% \pm 10$ Dgts
Frequency	20 to 400.0Hz	0.1Hz	$\pm 0.5\% \pm 5$ Dgts
Temperature	-40 to 1200 $^{\circ}$ C	1 $^{\circ}$ C	$\pm 0.5\% \pm 1^{\circ}$ C
Jaw Size	34mm		



Ordering Information

Part No: **T9105**

The unit comes in a gift box with test leads, battery, type-k thermocouple with adaptor and operating manual.

Batteries: 1 x 9V 6F22

Size: L 254 x W 80 x H 43mm

Weight: 360g

For replacement test leads order AL04, See page J60 for details.

AC/DC Clamp Meters

Digital Clamp Meter 660A AC/DC

A 6600 count mini true-RMS AC/DC digital clamp meter with overmoulded casing and in-rush current testing. This unique meter has many features such as clamp on frequency function and a clamp light.

Features.

- 3⁵/₁₆ digit 6600 LCD
- Clamp on frequency function
- Auto power off
- Auto/Manual ranging
- Clamp lighting
- Back light
- In-rush current

Safety and Compliance

Conforms to IEC1010-1 standard CAT III 600V, CE.

Feature	Range	Accuracy
DC Voltage	660mV/6.6/66/660V	±0.8%
AC Voltage	660mV/6.6/66/660V	±1.0%
AC Current	66/660A	±3.0%
DC Current	66/660A	±3.0%
Resistance	660/6.6k/66k/660k/6.6Ω	±1.2%
	66MΩ	±2.0%
Frequency - Terminals	10Hz - 10kHz	±2.0%
Frequency - Clamp	10Hz - 1kHz	±2.0%
Capacitance	66μ/660μ/6.6/66mF	±4.0%
Jaw Size	26 mm	



Ordering Information:

Part No: **C2108**

The C2108 supplied in a gift box, with soft pouch, leads, batteries and instruction manual.

Batteries: AAA (1.5V) x 3

Size: 208 x 78 x 35mm

Weight: ± 340g (exl. battery)

For replacement test leads order AL04, See page J60 for details.

Digital Clamp Meter 1000A AC/DC

A high quality 1000AC/DC digital clamp meter. This meter has handy functions such as relative zero and data hold.

Features.

- 3 ³/₄ digit 3999 count LCD
- Auto power off
- Auto/Manual ranging
- Auto zero key for DC current
- Clamp light
- Backlight
- Bargraph - 42 segment

Safety and Compliance

Conforms to IEC1010-1 and IEC1010-1-032 standard CAT III 600V

CAT II 1000V. Double insulated. CE.

Feature	Range	Accuracy
DC Voltage	4/40/400V	±0.8%
	1000V	±1.0%
AC Voltage	4/40/400V	±1.0%
	700V	±1.2%
AC Current	400/1000A	±3.0%
DC Current	400/1000A	±3.0%
Resistance	400/4k/40k/400k/4M	±1.0%
	40MΩ	±2.0%
Frequency	40Hz to 100KHz	±0.1%
Clamp diameter	42 mm	



Ordering Information:

Part No: **C2138**

The C2138 supplied in a gift box, with soft pouch, leads, batteries and instruction manual.

Batteries: 3 x 1.5V (AAA)

Size: 250 x 99 x 43mm

Weight: ± 340g

For replacement test leads order AL04, See page J60 for details.

AC/DC Earth Impedance Clamp Meters

Digital Clamp Meter 2000A AC/DC TRUE RMS

An AC and DC true RMS clamp meter that can measure 2000A DC and up to 1500 A AC, with a comprehensive number of features.

Features

- 3½ Digit 4000 Count LCD
- Min/Max Hold
- Relative Zero
- Bargraph
- Data Hold
- Diode & Continuity Test with Buzzer

Compliance and Safety

IEC61010, EN 55011, EMC – EN55022, CE, C_v. Overload protection: 750V ACrms and 1000V DC 500V DC/AC 500Vrms for Ω , frequency and capacitance

Feature	Range	Accuracy
AC Current	200/1500A	$\pm 1.5\% \pm 5d$
DC Current	200/2000A	$\pm 1.5\% \pm 5d$
AC Voltage	400m/4/40/400/750V	$\pm 1.5\% \pm 4d$
DC Voltage	400m/4/40/400/1000V	$\pm 0.5\% \pm 1d$
Resistance	400/4K/40K/400K/4M/40M Ω	$\pm 1\% \pm 4d$
Capacitance	4n/40n/400n/4M/40MF	$\pm 1\% \pm 4d$
Frequency	100/1k/10k/100k/400KHz	$\pm 0.1\% \pm 4d$
Jaw Size	57mm	

Ordering Information

Part No: **T2608**

Each unit comes with test leads, soft case, manual and battery.

Batteries: 2 x 1.5V AA

Size: H275 x W102 x L49mm

Weight: 540g

Optional: Software and interface cable
For replacement test leads order AL04,
See page J60 for details.



Earth Resistance Clamp Tester

The T5637 is a unique instrument to test an earth loop in an electrical network. The clamp consists of a two current transformers (CT) in the clamp. One will induce a signal on an earth line and the other CT will receive it. The unit will then display the resistance of the earth connection loop via ground, neutral and earth. The T5637 can also measure current from 0.2 mA up to 35 Amps. Applications are: telecommunications, electrical installations, cable TV systems, electrical distribution poles and anywhere where earth loop impedance is required.

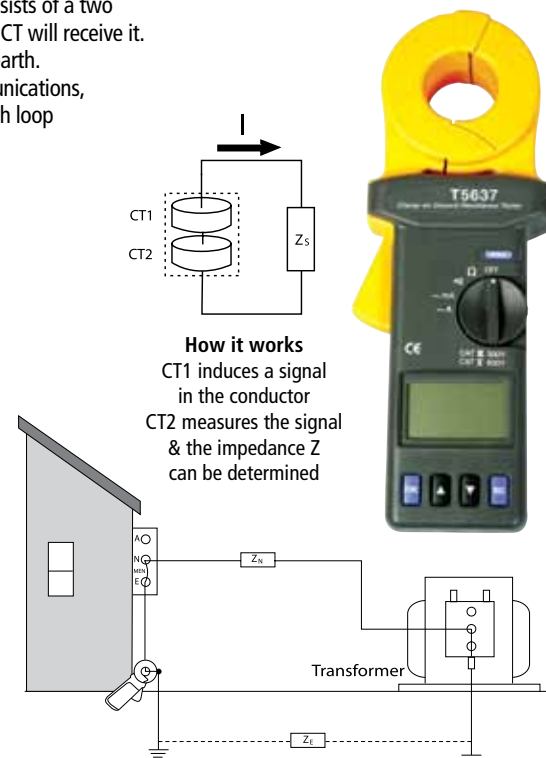
Features

- Non-Contact Earth Resistance Measurement
- No Auxiliary Electrode
- 0.025 to 1500 Ω
- 0.2 mA to 35 A True RMS
- 116 sets of Memory
- High and Low Alarm
- Programmable Data Logging
- Data Logging 116 readings
- Data Logging Intervals 1 to 255 seconds
- Battery life \pm 3000 readings
- 4 Digit 9999 Count LCD
- Sampling Rate 0.5 Seconds
- Power Consumption 40 mA
- Low Battery Indication
- Operating Temp 0 to 50° C
- Operating Relative Humidity 85%
- Auto Range Selection

Compliance and Safety

EN61010-2-032 CAT III300V, CAT II 600V, CE

Feature	Range	Resolution	Accuracy
Ground Resistance	0.025 to 0.250 Ω	0.002 Ω	$\pm 1.5\% \pm 0.02\Omega$
(Auto Range)	0.250 to 1.000 Ω	0.02 Ω	$\pm 1.5\% \pm 0.02\Omega$
	1.001 to 9.999 Ω	0.02 Ω	$\pm 1.5\% \pm 0.1\Omega$
	10.00 to 50.00 Ω	0.04 Ω	$\pm 1.5\% \pm 0.1\Omega$
	50.01 to 100.0 Ω	0.04 Ω	$\pm 1.5\% \pm 0.5\Omega$
	100.1 to 200.0 Ω	0.4 Ω	$\pm 3\% \pm 1\Omega$
	200.1 to 400.0 Ω	2 Ω	$\pm 5\% \pm 5\Omega$
	400.1 to 600.0 Ω	5 Ω	$\pm 10\% \pm 10\Omega$
	600.1 to 1500 Ω	20 Ω	$\pm 20\%$
Ground/Leakage	0.200 to 1.000 mA	0.001 mA	$\pm 2\% \pm 0.05$ mA
Current (mA Auto)	1.00 to 10.00 mA	0.01 mA	$\pm 2\% \pm 0.03$ mA
Range, 50/60 Hz,	10.0 to 100.0 mA	0.1 mA	$\pm 2\% \pm 0.3$ mA
True RMS, Crest	100 to 1000 mA	1 mA	$\pm 2\% \pm 3$ mA
Factor < 3.5)	0.20 to 35 A	10 mA	$\pm 2\% \pm 30$ mA
Jaw Size	35mm		



Ordering Information

Part No: **T5637**

The unit comes in a carrying box, with batteries installed, user manual and calibration resistance plate.

Batteries: 1 x 9V 6LR61

Size: L276 x W100 x H47mm

Weight: 750g

AC/DC Clamp Adaptors for DMM's

Digital Clamp Adaptor - 2000A AC/DC for DMM's with mV Range

The T202 current clamp meter is a transducer which will allow your multimeter to measure electrical current up to 1500 amps AC or 2000 amps DC, with a frequency response up to 400Hz. For DC measurement the unit is clamped in the correct direction on the conductor, using the + (Positive) and the - (Negative) on the jaws.

Features

- Range from 200A to 2000A AC/DC
- Hall Effect Sensor for DC Amps Measurement
- Effective Readout on to Digital Multimeter
- Data Logging Capability
- High Accuracy
- Auto Zero
- Low Battery LED Red Light Indicator

Compliance and Safety

Safety: Meets EN61010-1 CAT II 1000V & EN61012032

EMC: Meets EN89/336EEC and 93/86EEC

Overload Protection: 2000A – 60 seconds maximum

Feature	Range	Accuracy
AC Current	1500A	±3.5% + 3A
DC Current	2000A	±3.5% + 3A
Output	1mV/1A	
Jaw size	57mm	

Ordering Information

Part No: **T202**

Each unit comes with integral test leads, batteries and instruction manual.

Battery: 1 x PP3 9V

Size: L244 x W100 x D35mm

Weight: 490g



Flexible Clamp Adaptor - 3000A AC

Features

- Current Ranges 300A, 3000A
- Output 300mV or 1 V
- Input Protection ≤ 600V
- Minimum Bending dia. 35 mm 50/60 Hz
- Wide Bandwidth, Low Phase Shift
- Low Battery Indication

Feature	Range
AC Current	30 - 300A 300 - 3000A
Output	1mV/1A or 3.333mV 0.1mV/1A or 0.333/1A
Length	610mm

Ordering Information

Part No: **TA3000**

Each unit comes with internal leads, batteries & monitor.



Power Clamps and Power Analyser

Power Clamp 1000A AC, True RMS

A family of unique power clamp meters that are feature packed, starting with a basic, then standard and a deluxe model to suit the users requirements.

Features

- IEC61010-2-032 CAT III 600V
- Voltage 6000 counts
 - Hz & Ω 9999 counts
 - Amp 4000 counts
- AutoVA TM
- Power Factor
- Peak RMS Hold
- Update Rate Hz - 2/sec, V, A, Ω , temp. - 4/sec
- APO: Idle for 17 min (10 μ A consumption)
- **TBM155** only
- Backlight
- Temperature
- THD%R (TBM155)

Feature	Range	Accuracy
AC/DC Voltage	600V	1.5% +5d
AC Current	40/400/1000A	2.5% +5d
Resistance	999.9 Ω	1.0% +6d
Power kVA	0-600 kVA PF@.99-0.01	F - 51 st 3.5% +6d
Frequency	5Hz to 500Hz	0.5% +4d
kW & kVAR	0.00~600.0kW 0.00~600.0kVAR	F - 51 st 5.5% +6d
Temperature	-50° to 300°C	2%+3°C
Jaw Size	45mm	
TBM155	-58° to 572°F	2%+6°F
THD%-R	0% ~ 999.9%	F - 51 st
TBM155	0% ~ 999.9%	5% +6d

Ordering Information

Part No:

TBM151, TBM155 (True RMS)

Each unit comes in a gift box with operating manual, batteries installed, test leads, type-k thermocouple, and soft carry pouch.

Batteries: 2 x 1.5V AAA

Size: L224 x W78 x H40mm

Weight: 224g

Optional

Software and Interface Cable

Part No: **TBR15X**

For replacement test leads order AL04,

See page J60 for details.

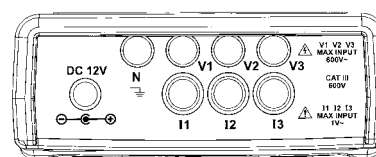
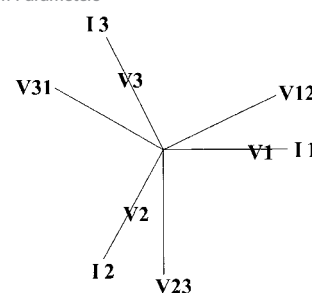


Power and Harmonics Analyser 1000A Specifications continued on next page



Graphic 3P4W Phaser Diagram + System Parameters

V1:	128.0V	0.0°
V2:	127.3V	-121.5°
V3:	124.3V	118.4°
I1:	21.05A	-1.6°
I2:	20.87A	-123.3°
I3:	20.98A	117.5°
IN:	0.59A	101.7°
V12:	222.9A	28.0°
V23:	218.1V	-93.0°
V31:	216.8V	148.5°
Vav:	219.2V	
VUR%:	0.14%	
d02%:	0.06% 1.59%	



Voltage & Current Input Panel

Power Clamps and Power Analyser

Power and Harmonics Analyser 1000A (specification continued)

The T6800 is a powerful, feature packed 3 phase power and harmonics analyser with a sampling rate of 1024 points per cycle. The unit gives easy to understand information and graphic displays. This easy to use power analyser is reasonably priced for all the features that it offers.

Features

- True RMS values for Voltage and Current
- Display up to 35 Parameters on Screen
- LCD Update 1 x per second
- Active Power (W, kW, MW, & GW)
- Apparent and Reactive Power
- Power Factor and Phase Angle
- Display of Voltage and Current Waveforms
- Display Average
- Maximum Demand with Programmable Period
- Display 50 Harmonics on one screen
- Display of Waveform and Peak Values (1024 Samples/Period)
- Graphic Phasor Diagram with 3 Phase System Parameters
- Capture 28 Transient Events (Time + Cycles) with Programmable Threshold (%)
- 3 Phase Unbalance Ratio & 3 Phase Unbalance Factor
- Calculated Unbalanced Current Through Neutral
- 512k Memory with Programmable Intervals (1-16000 Seconds, 17000 Records for 3P4W System)
- Output Waveform, Power Parameters and Harmonics on Command
- Large Display with Backlight
- Optical RS232C Interface
- Power Consumption 140 mA
- Operating Temp. - 10 to 50 C
- Operating Relative Humidity - 85%

Ordering Information

Part No: **T6800**

The unit comes in a Carry bag, with a users manual, batteries, power supply test leads with alligator clips and 3 x 1000A Current Probes.

Battery: 8 x AA, as well as a AC adapter for mains power useage

Fuse: 1A/250V 5 x 20

Size: Main Unit: H257 x W155 x L57mm

Current Probes: 244 x 97 x 46mm

Weight: Main Unit: 1160g

Current Probes: 200g

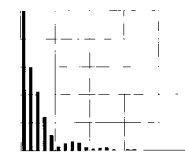
Optional Accessories:

T6801 100A Clamps x3

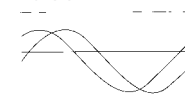
T3007X3 3000A Flexible Clamps x 3

WICKIT3 Plastic Moulded Case

Display of 50 Harmonic with Waveform



Display of Overlapped Voltage & Current Waveform with Waveform



Compliance and Safety

EN61010 Cat III 600V Pollution Degree 2, CE

Overload Protection

AC Current: 2000A, AC Voltage: 800V

Feature	Range	Resolution	Specifications	Accuracy
AC Watt	5.0~999.9W 1.000~9.999KW 10.00~99.99KW 100.0~999.9KW 1000~9999KW 0.000~9.999MW	0.1W 0.001KW 0.01KW 0.1KW 1KW 0.001MW	(50/60Hz, PF 0.5 to 1. CT = 1, Voltage > AC 3V, Current > AC 0.3A for A range, and continuous waveform) *1 *1 For CT not = 1, the accuracy in % is the same (±1%). But the additional digits should be multiplied by the CT ratio.	±1.0% +8d
AC Current	0.04~10A 0.4~100A 4.0~1000A	0.01A 0.1A 1A	50 or 60 Hz, Auto Range, True RMS, Crest Factor < 4, CT = 1 *2 *2 For CT not =1, the accuracy in % is the same (±0.5%). But the additional digits should be multiplied by the CT ratio	Unspecified ±0.5% +5d ±0.5% +5d
AC Voltage	4.0~500V (Phase to Neutral) 4.0~600V (Phase to Phase)	0.1V	50 or 60 Hz, Auto Range, True RMS, Crest Factor < 4, Zin 10MΩ, VT (PT) =1 *3 *3 For VT (PT) not =1, the accuracy in % is the same (±0.5%). But the additional digits should be multiplied by the VT (PT) ratio	±0.5% +5d
Harmonics of AC Voltage in %	1-20th 20-49th 50-99th	0.1%	1~99th order, min voltage at the 50/60Hz > AC 80V. If the voltage is 0 @ 50/60Hz, all the % displays is 0	±2.0% ±4.0% ±2% ±6.0% ±2%
Harmonics of AC Voltage in Magnitude	1-20th 20-49th 50-99th	0.1V	1~99th order, min voltage at the 50/60Hz > AC 80V, VT = 1	±2.0% ±4.0% ±0.5V ±6.0% ±0.5V
Harmonics of AC Current in %	1-20th 20-49th 50-99th	0.1%	1~99th order, min Current @ 50/60Hz > 20A. If the Current is 0 @ 50/60Hz, all the % displays is 0	±2.0% ±4.0% ±2% ±6.0% ±2%
Harmonics of AC Current in Magnitude	1-20th 20-49th 50-99th	0.1%	1~99th order, min Current at the 50/60Hz >20A, CT = 1	±2.0% ±0.4A ±4.0% ±0.4A ±6.0% ±0.4A
Power Factor (PF)	0.00~1.00	0.01	-	±0.04
Phase Angle	-180± to 180±	0.1±	-	±1°
Total Harmonic Distortion	0.0~20% 20~100% 100~999.9%	0.1% 1.0% 0.1%	THD-F with respect to the 50/60Hz, min value @ 50/60Hz >80V and >20A, 1 to 50th harmonics. If the Voltage or Current is 0 @ 50/60Hz, all % display is 0	±2.0% ±6.0% ±1.0% ±10.0% ±1.0%
Peak Value of AC Voltage	50Hz 60Hz	Sampling Time 39µs 33µs	(peak value >5V) or AC Current (peak value >20A) VT=1	±5.0% ±30d
Crest Factor (C.F.)	1.00~99.99	0.01	of ACV (peak value >5V) or ACA (peak value >20A), VT =1	±5.0% ±30d
Frequency in Auto mode	45~65Hz	0.1Hz	-	±0.1Hz

Insulation Testers Selection Chart & Analogue Insulation Tester

FEATURES	VAI1000	C5201	T1800	T1851	T2732	T2751	C5202	TIN6A	TIN6D	C5215
Display	Analogue	Digital	Analogue	Digital	Analogue	Digital	Dual	Analogue	Digital	Digital
250V Test Voltage		✓	✓	✓	✓	✓				
500V Test Voltage	✓	✓	✓	✓	✓	✓			✓	✓
1000V Test Voltage	✓	✓	✓	✓	✓	✓			✓	✓
2500V Test Voltage							✓		✓	✓
5000V Test Voltage								✓	✓	✓
10000V Test Voltage								✓	✓	
Max Resistance	2000MΩ	2000MΩ	400MΩ	2000MΩ	400MΩ	2000MΩ	200	400GΩ	500GΩ	5TΩ
Insulation Test Current	3.4/0.34mA	1mA	2mA	1mA	1.3mA	1mA	1mA	1W	1W	1.5mA
Continuity Test Current	40mA	240mA	240mA	210mA	205mA	200mA	205mA			
Timer (Continuous Test)								✓	✓	Chronometer
Live Circuit Warning		✓	✓	✓	✓	✓	✓	✓	✓	
Automated Operation								✓	✓	✓
Auto Discharge	*Note	✓	✓	✓	✓	✓	✓	✓	✓	✓
Low Resistance		0-20 0-200	0-50 & Infinity	0-20 0-200	0-3 0-500	0-20 / 0-200/0-2000	0-20 0-2000*			
Resistance Buzzer				✓		✓				
AC Voltage	0-600	700	0-600	0-600	0-600	0-600	700			
Battery Check	✓				✓	✓		✓	✓	✓
APO				✓		✓		✓	✓	✓
Special Feature	*Discharge Function		Rugged & Compact Case	Rugged & Compact Case	3Ω Range & Default Voltmeter, Overload Protection	Low Ohm Range Overload Protection		Low Energy Use	Large Range, Low Energy Use	PC link, Rechargeable Polarisation Index, Dielectric Absorption Index
Warranty (Years)	1	1	1	1	2	2	1	1	1	1
IEC61010 CAT	II 600	III 600	III 600	III 600	III 600	III 600	CATII 5000V	N/A	N/A	N/A

Analogue Insulation Tester 500, 1000V

- IEC61010 CATII 600V, CATIII 300V
- 500V & 1000V Insulation Tests
- 600V AC Measurement
- Voltage Discharge Function on 500V Test

Compliance and Safety

IEC61010 CAT II 600V, CAT III 300V, Pollution degree 2, CE

Feature	Range
Rated	500V/2000Ω +/- (5% of arc)
Voltage	1000V/2000Ω +/- (5% of arc)
AC Voltage	0-600V +/- (5% scale length)
Resistance	0-100Ω +/- (5% of arc)

Ordering Information

Part No: **VAI1000**

The unit comes with batteries, spare fuse, leads & crocodile clips and manual.

Battery: 6 x 1.5V AA

Fuse: 1A/250V 5 x 20

Size: H145 x W106 x L52mm

Weight: 380g with Batteries

For replacement test leads order AL24,

See page J60 for details.



Insulation Testers 250/500/1000V

Analogue Insulation Tester

A good quality general purpose analogue insulation tester packed in a compact casing. The display is clearly laid out and the operating panel is colour coded. The casing has a compartment on one side for packing leads and accessories. The unit is equipped with a lock down operating button. Ideal for testing an installation for continuity, AC voltage and insulation at voltages 250, 500 and 1000V. The cover can be removed and the unit easily operated with a shoulder strap that leaves the hand free to hold the leads. The batteries are accessed in a compartment under the meter.

Features

- Automatic Discharge
- Colour Coded Scale
- Lock Down Push Button
- Fuse Protected
- Compact Rugged Case
- Live Line Indication
- Insulation 2mA
- Continuity 200mA
- Crowbar Protection

Compliance and Safety

IEC61010 CAT III 600V, Pollution Degree 2, CE

Feature	Range	Accuracy
Insulation	250V DC - 0 to 50MΩ & 100	± 5% of full scale
	500V DC - 0 to 100MΩ & 200	
	1000V DC - 0 to 200MΩ & 400	
Continuity	0 to 50Ω	± 5% of full scale
AC Voltage	40 to 600V AC (40 to 1000Hz)	± 2.5 % of F.S.



Ordering Information

Part No: **T1800**

The unit comes in a compact, rugged case with batteries, spare fuse, leads & crocodile clips, manual and shoulder strap.

Batteries: 8 x 1.5V AA

Fuse: 1A/250V 5 x 20

Size: H170 x W165 x L92mm

Weight: 970 g with Batteries

For replacement test leads order AL24, See page J60 for details.

Digital Insulation Tester

An excellent compact insulation tester with a rugged case and a large digital display. It has a colour coded operating panel, lock down operating push button, zero adjustment, and off/on switch. The case has a compartment for leads and accessories. The cover can be removed and the tester easily operated with a shoulder strap that would allow both hands to hold the leads. It has two LED warning indicators for live circuit and power on. The batteries are easily accessed in a compartment under the tester.

Features

- 3½ Digit 2000 Count LCD
- Large Display 68 x 34 mm
- Compact and Rugged Case
- Accuracy ± 1.5%
- 3 Insulation Ranges 250, 500 & 1000V DC
- 2 Continuity Ranges 20 & 2000Ω
- AC Voltage to 600V Measurement
- Live Circuit Warning
- Automatic Circuit Discharger
- Fuse Protected

Compliance and Safety

IEC61010 CAT III 600V, Pollution Degree 2, CE

Feature	Range	Accuracy
Insulation	250/500V - 0 to 200MΩ	±1.5% ± 5d
	1000V DC - 0 to 2000MΩ	±4% ±4d
Continuity	0 to 20Ω, 0 to 2000Ω	± 1.5% ± 5d
AC Voltage	0 to 600V AC (40 to 120Hz)	± 1.5% ± 3d



Ordering Information

Part No: **T1851**

The unit comes in a compact rugged case with batteries, spare fuse, leads and crocodile clips, manual and shoulder strap.

Batteries: 8 x 1.5V AA

Fuse: 0.5A 250V

Size: H170 x W165 x L92mm

Weight: 1040g

For replacement test leads order AL24, See page J60 for details.

Insulation Testers 250/500/1000V

Analogue Insulation Tester

A well priced, accurate general purpose analogue insulation tester suitable for rugged environments. The operating panel and display are colour coded and clearly laid out. The unit fits into a folding case with a compartment for leads and accessories. The meter is equipped with a lock down button and a lead resistance zero operating knob. It tests continuity from 3 to 500Ω, AC voltage to 600V and insulation at voltages 250, 500 and 1000V. A battery voltage check is included in the range. Warning indicators are "Battery On" LED and an audible and LED "Live Circuit". The batteries are accessed in a compartment under the meter.

Features

- "Live Circuit" Audible and Visual Alarm
- Defaults to Voltage
- Low 3Ω Range
- Crowbar Protection
- Current Limit
- Automatic Discharge
- Colour Coded Scale
- Lock Down Push Button
- Fuse Protected
- Compact Rugged Case
- Live Line Indication
- Battery Check
- Mirror Scale

Compliance and Safety

IEC61010 CAT III 600V,
Pollution Degree 2, CE

Feature	Range	Accuracy
Insulation	0 to 100MΩ (250V DC ± 10%)	± 5% of full scale
	0 to 200MΩ (500V DC ± 10%)	
	0 to 400MΩ (1000V DC ± 10%)	
Continuity	0 to 3Ω	±1.0% of full scale
	0 to 500Ω 210 mA	
AC Voltage	0 to 600V AC	± 3% of full scale
Voltage	90VDC, 70VAC for Visual Indication	
Warning	24V Buzzer	

Ordering Information

Part No: **T2732**

The unit comes in a rubber holder with batteries, spare fuse, leads & crocodile clips, manual and shoulder strap.

Batteries: 6 x 1.5V AA

Fuse: 0.5A (5 x 20mm)

Size: H205 x W90 x L55 mm

Weight: 540g with Batteries

For replacement test leads order AL24,

See page J60 for details.



Digital Insulation Tester

A professional digital instrument that is an accurate, rugged insulation tester with a large, easy to read display. The operating panel is colour coded and clearly laid out. The unit fits into a folded case with a compartment for leads and accessories. The meter is equipped with a lock down button for insulation and continuity tests. It tests continuity from 3 to 500Ω, AC voltage to 600V and insulation at voltages 250, 500 and 1000V. A battery voltage check is included in the range. Warning indicators are "Battery On" LED and an audible and LED "Live Circuit". The batteries are accessed in a compartment under the meter.

Features

- "Live Circuit" Visual Alarm
- Automatic Discharge
- Colour Coded Scale
- Lock Down Push Button
- Fuse Protected
- Compact Rugged Case
- Live Line Indication
- Continuity 4V DC, 200mA
- Insulation 1mA

Compliance and Safety

IEC61010 CAT III 600V,
Pollution Degree 2, CE

Feature	Range	Accuracy
Insulation	0 to 20MΩ (250V DC ± 10%)	±2.5% ±3d
	0 to 200MΩ (500V DC ± 10%)	
	0 to 2000MΩ (1000V DC ± 10%)	
Continuity	20/ 200/ 2000Ω	± 1.5% + 3d
AC Voltage	0 to 600V AC; 40 –120Hz	± 3 of F.S.D
Voltage	90V DC, 70V AC for Visual Indication,	
Warning	24V for Buzzer	

Ordering Information

Part No: **T2751**

The unit comes in a rubber holder with batteries, spare fuse, leads & crocodile clips, manual and shoulder strap.

Batteries: 6 x 1.5 V AA

Fuse: 0.5 A (5 x 20mm)

Size: H200 x W85 x L55mm

Weight: 1380 g with Batteries

For replacement test leads order AL24,

See page J60 for details.



Insulation Testers

Digital Insulation Tester 250/500/1000V

A low cost multi voltage digital insulation tester with a large display. The unit is equipped with lock down operating button. Ideal for testing insulation resistance at 250/500/1000V, continuity and AC voltage.

Features.

- 3 ½ digit 1999 count LCD
- Sound and flash alarm
- 22mm digital display
- Data hold
- Continuity Test
- Back light

Safety and Compliance

Conforms to IEC1010-1 standard CAT III 600V CAT II 1000V, CE

Feature	Range	Accuracy
DC Voltage	1000V	±0.8%
AC Voltage	700V	±1.5%
Insulation	250V 200ms	±3.0%
	500V 1000MΩ	±3.0%
	1000V 2000MΩ	±3.0%
Resistance	200Ω	±1.2%



Ordering Information:

Part No: **C5201**

The C5201 is supplied in a gift box, with hard plastic case, soft pouch, batteries, instruction manual, star screwdriver, a set of leads with Ø 2mm pin probes and a lead set with crocodile clips.

Batteries: AAA (1.5V) x 6

Size: 190 x 82 x 36mm

Weight: ± 545g

For replacement test leads order AL24,

See page J60 for details.

Analogue/Digital Insulation Tester 2500V

A high voltage analogue digital combination insulation meter capable of measuring up to a 100GΩ. The unit is equipped with a double test switch to prevent incorrect operation. Ideal for testing insulation resistance at 2500V, continuity and AC voltage.

Features.

- Analogue and digital display
- Inner battery test
- Double test switch
- Unique design to protect inner circuit from humidity
- Test insulation up to 100GΩ at 2500V

Safety and Compliance

Conforms to IEC1010-1 standard CAT II 5000V, CE

Feature	Range	Accuracy
DC Voltage	1000V	±0.8%
AC Voltage	700V	±1.5%
Insulation Digital	2500V 50GΩ	±5.0%
Insulation Analogue	2500V 100GΩ	±3.0% FSD
	1000V 1000m	±3.0%
Resistance	200	±1.2%



Ordering Information:

Part No: **C5202**

The C5202 is supplied in a gift box, with soft pouch, batteries, instruction manual & a set of leads.

Batteries: AAA (1.5V) x 8, 9v x 1

Size: 225 x 135 x 81mm

Weight: ± 1000g

For replacement test leads order AL53,

See page J60 for details.

High Voltage Insulation Testers

Insulation Tester 5 & 10kV

Industrial insulation testers are robust, heavy duty units which test insulation at various high voltages. The TIN6A is an analogue battery powered insulation tester designed for harsh environments and is an analogue version of the TIN6D. It is battery powered, consuming very low power and capable of 20 hours of continuous operation at maximum load. These battery powered units are used for low energy requirements such as switchboards, motors and low capacitance applications. This range has built-in Internal Guard Circuitry to eliminate errors due to surface current creepage. The operation is controlled by a microprocessor giving visual and audible indications and warnings, to alert test engineers to the status and presence of dangerous voltages.

Features

- Analogue Display
- Test at 5kV and 10kV
- Live Line Warning Beeper
- Auto-Discharge
- Low Battery Indication
- Crowbar Protection
- Heavy Duty Case

Compliance and Safety

IEC61010-1 CAT III 600V

Feature	Range	Accuracy
Test Voltages	5000V: Lower - 0-5GΩ	±5% full scale
	Upper - 2MΩ to 200GΩ	
	10,000V: Lower - 0-10GΩ	
	Upper - 2MΩ to 400GΩ	
Live Warning	> 500V AC	



Ordering Information

Part No: **TIN6A**
 Test leads: AL53 High Voltage test lead
 Batteries: 8 x 1.5V C Alkaline
 Size: L330 x W260 x D160mm
 Weight: 3.6kg

Insulation Tester 500V - 10kV

Industrial insulation testers are robust, heavy-duty units which test insulation at various high voltages. They are designed to read accurately in harsh environments. They are battery powered, consuming very low power and capable of 20 hours of continuous operation at maximum load. This series has many advanced features, for example voltage decay, test time and external voltage warning. The test information is displayed on the 2 by 20 line LCD after the test, so the results can be recorded easily. The meters have a digital Bargraph showing DC output voltage and will indicate discharge. The unit will auto discharge and when discharged show a "HOLD" message on the display.

The meters are factory calibrated to the highest international standards and digitally saved into a non-volatile memory. The meters will retain their ultra-precise calibration indefinitely. The latest EEPROM technology is used to calibrate and there are no physical adjustments. These units have built-in Internal Guard Circuitry to eliminate errors due to surface current creepage.

The operation is controlled by a microprocessor giving visual and audible indications and warnings to alert test engineers to the status and presence of dangerous voltages. Current limiting circuitry protects insulation being tested against "over-power". This also protects the test engineer against accidental shocks from the "live" test probes.

Features

- Timer
- Live Circuit Warning
- Digital Display
- Electronic Operation
- Robust Carry Case
- Auto Discharge

Compliance and Safety

IEC1010-1 CAT III 600V

Feature	Range	Accuracy
Test Voltage	500 to 10,000V	±3% ±1d F.S.
	Variable in 500V Increments	
Insulation Resistance	60GΩ - 500GΩ	< 2/5 of range
		±5% ±1d
		> 2/5 of range
		±10% ±1d
Live Warning	>500V AC	



Ordering Information

Part No: **TIN6D**
 The unit comes in a compact rugged case with batteries, spare fuse, leads and crocodile clips, manual and shoulder strap.
 Test Leads: AL53 High Voltage
 Batteries: 8 x AA Alkaline
 Size: H330 x W260 x L160mm
 Weight: 3.6kg

High Voltage Insulation Testers

High Voltage Digital Insulation Tester

The C5215 is a smart, microprocessor controlled insulation tester capable of measuring up to $5T\Omega$. It offers a high power output and has built-in features of Polarization and Dielectric Absorption Index. The unit is suitable for testing circuits with a higher capacitance than the TIN6D. The voltage range can be selected from 500V to 5000V in steps of 25V. Values can be transmitted and logged on a PC, Laptop or PDA via a USB interface. This is a simple to use and very powerfully featured portable high voltage insulation tester that can be powered by rechargeable batteries. It is encased in a strong, lightweight, impact resistant carry case and is suitable for use in severe weather conditions. It is easily recharged from a 240V mains supply. The C5215 is equipped with a safety shutter that protects the output terminals. The unit automatically discharges and there is a high voltage warning light to indicate the presence of voltage. This is a high quality instrument with advanced, simple to use features.

Features

- Insulation Resistance to $5T\Omega$
- Multiple Voltages 500V to 5000V in steps of 25V
- Output Voltage Display
- Auto Range
- Guard Terminal
- Automatic Timer in mm:ss
- HV Warning Light Indicator
- Auto Off
- USB Data Link
- Robust Heavy Duty Case
- IP54 with Lid Closed
- Chronometer MM:SS
- Digital Alpha Numeric Display
- Bargraph
- Rechargeable Batteries (optional)
- Polarisation Index
- Dielectric Absorption Index

Compliance and Safety

Conforms to IEC61010-1/1992 Amendment 2 CATIV 600V

Feature	Range	Accuracy
Test Voltage	500V to 5000V in steps of 25V 3% @ R	$\pm 10GR$
Resistance	1M Ω to 5T Ω @5kV $\pm 5\%$	$\pm 5d$



Ordering Information

Part No: **C5215**

The unit comes in hard plastic case with manual & USB interface cable.

Batteries: Internal Rechargeable 12V to 2.3A

Size: H274 x W250 x L124mm

Weight: 1Kg

Optional Accessories:

C5215BATTERYP

Rechargeable battery pack

60-51-MS5215-001

Power supply

Resistor PCB

A useful printed circuit board with resistors for testing resistance ranges on meters, or for training personnel on, or demonstrating electrical resistance.

Resistor Range: 0.5, 1, 10, 20, 100, 500 Ω , 1k, 1k5, 1M, 10M, 50M 100M Ω

TR-PCB



Resistor Calibration Box (10kV)

A range of resistances for calibrating and checking insulation testers up to 10kV. Packaged in an aluminium case for easy storage and portability.

TRCB-3*

Feature	Range
Resistance Tolerance	$\pm 1\%$
Max. Working Voltage	10kV
Power Dissipation	3W
Resistance Range	1M/10M/100M/1G/ 100G/500G Ω



*Price on Request. Item is not Stocked.

Phone: 133 122 | Fax: 1300 303 310

Socket\RCD Testers

Power Point Tester

A handy low-cost unit that tests a power outlet for polarity, earth connection, incorrect wiring and tests earth leakage circuit breakers. To use the unit, simply plug in and compare the neon lights on the front panel with the diagram on the front of the instrument, and it will test the wiring on the power point. To test an earth leakage circuit breaker, first check the wiring as above, then turn the rotary switch slowly through the range of mA settings. The RCD should trip before the maximum setting of 35mA is reached.

Features

- Low cost for a big result
- Very simple and easy to use
- Rugged and compact design
- Identifies six wiring conditions
- Integral plug fits straight into the socket

Feature	Range	Accuracy
Voltage Range	110 to 240V	
Test Conditions	Correct Active/Neutral Reverse Active/Earth Reverse No Neutral Live Earth No Earth No Active	
ELCB Test	30mA Trip 10, 15, 20, 25, 30, 35mA	±5% at 220V
Quiescent Current	1.75mA	



Compliance and Safety

Safety: Sealed unit, with 3 pin plug.
No exposed test leads.
EMC: Meets EN55022, CE C/

Ordering Information

Part No: **TEL1TL**
Each unit comes complete on a slide blister with instructions.

Digital RCD Tester - 240V

The T2712EL is a compact hand held RCD tester with three basic tests, Wiring, Line Voltage to Earth & Tripping Time.

Features

- Three basic tests - Wiring, Line Voltage to Earth, Tripping Time
- Menu driven and easy to use
- Has a LED wiring check function to check wiring prior to test
- The phase at which to start the test can be selected (0 or 180°).
- Dynamic battery check
- Microprocessor controlled
- Tough rugged meter, designed to give accurate measurements in harsh environments

Feature	Range
System Voltage	240V
Trip Settings	3/5/10/15/20/30/50/100 150/250/300/500mA
Disconnection Time	0 - 2.999 Seconds
Time Resolution	1mS
Phase Start Selection	1 - 180°
Operating Temperature	-5 to 45°C

Compliance and Safety

Safety: Meets IEC 1010-1 CAT III 300V
EMC: Meets EN55011, CE C/
Over-voltage, over-temperature and fuse protected

Ordering Information

Part No: **T2712EL**
Each unit is supplied in a rubber holster with test leads, batteries and instruction manual.
Batteries: 6 x AA batteries (included)
Size: L200 x W85 x H55mm
Weight: 540g



RCD Test Instruments

Digital RCD Tester - 110V to 450V

The AEL28 is an industrial RCD tester.

Features

- Operating voltage 100-450V line to earth
- Rated current 999mA at 317V AC / 50Hz
- Checks ELCB trip time and trip current (sensitivity)
- APO
- Data hold function
- Accurate digital readout of disconnection time/sensitivity
- Auto ranging
- Micro processed controlled
- Phase angle selection (0 / 180°)

Compliance and Safety

Safety: Meets IEC 61010 CAT III, CE CV
EMC: Meets EN55011
Overload protection:
Built-in transient protection

Feature	Range
Trip Current Range	0 - 999mA
Trip Current Resolution	1mA
Phase Angle Setting	0° & 180° Selectable
Timer Max	99.999S
Timer Resolution	1ms
Operating Voltage	100 – 450V
Operating: Temperature	10° to 40°
Humidity	80% Max

Ordering Information

Part No: **AEL28**
Each unit comes with test leads in a bag, shoulder strap, operation manual and batteries.
Batteries: 8 x AA 1.5V
Size: L170 x W120 x H95mm
Weight: 625g



Three Phase RCD Tester

The TEL11 is Suitable for heavy industrial use.

Features

- Operating voltage 100V to 550V line to line.
- Phase sequence
- Checks RCD trip time and trip current (sensitivity)
- Rechargeable battery
- Auto off
- Auto ranging
- Phase angle selection (0°/180°)
- Impact resistant enclosure

Compliance and Safety

IEC61010, CE CATIII - 120VAC

Feature	Range	Accuracy
Trip Current Range	0 - 999mA	1%rdg + 1mA + 2d
Trip Current Resolution	1mA ± 1	
Timer Max	99.999S	1%rdg 1dgt
Timer Resolution	1mA	± 5%
Operating Voltage	100-550V phase	3%rdg 1dgt
Operating Temperature	10 to 40°C	
Humidity	80% Max Relative Humidity	

Ordering Information

Part No: **TEL11**
The unit is a rugged Polycarbonate/ABS case, with test leads, manual and battery charger.
Batteries: Built-in Rechargeable
Fuse: 1 X 50 mA Potential Fuse and 1 X 2 A 250V Slow Blow
Size: L330 x W260 x H160mm
Weight: 4.4kg



Fault Loop Impedance Tester

Loop Impedance and PSC

A compact multi-function meter for analysing the basic important features of an electrical network. The meter automatically tests voltages, impedances and the prospective short circuit current between line, neutral and earth. Ideal for checking, fault finding and commissioning electrical installations. Find loose connection, earth resistance, earth continuity, input voltages, prospective short circuit currents, circuit impedances, etc. with the push of one button. It is simple to use, but indicates many important aspects of an electrical network. An essential instrument for commissioning engineers, installation electricians, UPS installers and maintenance electricians.

Features

- Microprocessor Controlled
- Wiring Polarity Indicator
- One Push Button Activation
- Battery Ok Indicator
- Auto Power Off
- Ultra Low Power Consumption
- 6ka Prospective Short Current
- Easy to Calibrate
- Low Power Consumption

Compliance and Safety

IEC61010 CAT III 600V, CE

Feature	Range	Accuracy
Voltage	50 to 280V AC	±1% (210-250V) ±3% otherwise
Loop Impedance	0.01 to 2000Ω	±2% up to 50Ω 3% 50 to 500Ω 15% 500W plus
Prospective Short Circuit Current	8kA at 230V AC	±15% depends on the loop impedance

The T2726 Loop Impedance Tester will display in scrolling order, the line voltage, the sum of and individual impedances and the prospective short circuit current (PSC) in loops Active/Neutral and Active/Earth. The instrument calculates the PSC using the recorded voltages and measured impedances. To obtain accurate milliohm values the instrument uses a high current, which will trip the RCD. The RCD should be by-passed and the load on the circuit minimized before the test is done. Instruments that do not trip the RCD use test currents below 20mA and are not as accurate as when using a higher current test. Determining the PSC is useful to determine the maximum load protection on a circuit e.g. a class C circuit breaker needs to trip at 7.5 times its rated current and the circuit must be able to carry it.



Ordering Information

Part No: **T2726**

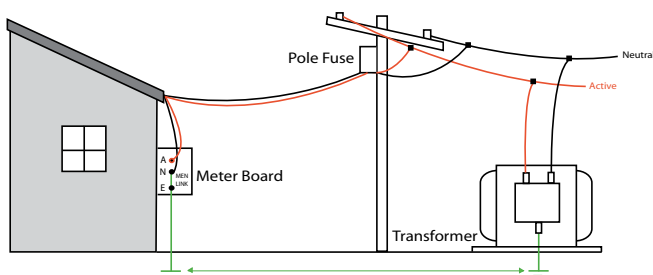
The unit comes complete with batteries, spare fuse, leads and crocodile clips, manual and shoulder strap.

Batteries: 8 x 1.5V size AA

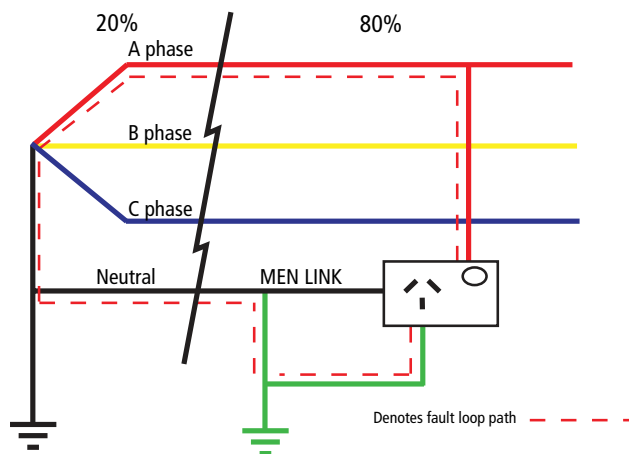
Size: L205 x W90 x H55mm

Weight: 0.5kg with batteries

For replacement test leads order TEL-EL or AL30RBGKIT, See page J60 for details.



Drawing 1



Drawing 2

Loop/Line/RCD Tester

Line-Loop/RCD

The MI3122 Smartec is a sophisticated Loop/Line/RCD Tester with built-in memory for logging results and downloading to a PC with optional EuroLink LITE or EuroLink PRO software.

Features

- Supports all live tests on LV-electrical circuits:
 - Loop impedance / prospective fault current
 - Line impedance / prospective short-circuit current
- RCD tests (trip out time, contact voltage, ramp test, Autotest)
- Testing on 1- and 3-phase systems
- Phase sequence test
- Metal test button for touch voltage detection
- High accuracy non tripping loop test for RCD protected circuits
- PASS/FAIL evaluation of measurement result
- Bright GREEN/RED indicators provides visual evaluation of results
- Magnetic holder allows hands-free operation
- Built-in battery charger
- Basic downloading with EuroLink LITE PC SW package (available separately)
- USB and RS232 ports

Trip-out time

Measuring range (ms)	Resolution (ms)	Accuracy
0 ÷ 300	1	±3 ms

Test current $\frac{1}{2}I_{\Delta N}$, $I_{\Delta N}$, $2I_{\Delta N}$, $5I_{\Delta N}$

Trip-out current

Measuring range (I Δ)	Resolution (I Δ)	Accuracy
0.2xI ΔN ÷ 1.1xI ΔN (AC type)	0.05xI ΔN	±0.1xI ΔN
0.2xI ΔN ÷ 1.5xI ΔN (A type, IDN ≥ 30 mA)	0.05xI ΔN	±0.1xI ΔN
0.2xI ΔN ÷ 2.2xI ΔN (A type, IDN < 30 mA)	0.05xI ΔN	±0.1xI ΔN

Measuring range (Ω)	Resolution (Ω)	Accuracy
0.00 ÷ 9.99	0.01	±(5 % of reading + 5 digits)
10.0 ÷ 99.9	0.1	±(5 % of reading + 5 digits)
100 ÷ 999	1	± 10 % of reading
1.00 k ÷ 9.99 k	10	± 10 % of reading

Test current (at 230 V): 6.5 A (10 ms)

Nominal voltage range: 30 V ÷ 500 V (45 Hz ÷ 65 Hz)

Line impedance

Measuring range (Ω)	Resolution (Ω)	Accuracy
0.00 ÷ 9.99	0.01	±(5 % of reading + 10 digits)
10.0 ÷ 99.9	0.1	±(5 % of reading + 10 digits)
100 ÷ 999	1	± 10 % of reading
1.00 k ÷ 9.99 k	10	± 10 % of reading



Ordering Information

CABAC **MI3122** (Instrument Only)
 Part No: **MI3122PROK** (PRO Software)
MI3122LITEK (LITE Software)

The unit comes complete with:

Soft hand strap
 Schuko test cable
 Universal test cable 3 x 1.5 m
 Test tips, 3 pcs (blue, black, green)
 Alligator clips, 3 pcs (blue, black, green)
 Power supply adapter + 6 NiMH AA rechargeable batteries
 Instruction manual on CD
 Short instruction manual
 Handbook "Guide for testing and verification of low voltage installations" on CD
 Size: (L)140 x (W)80 x (H)230mm
 Weight: 1 kg

Digital Low Voltage Installation Tester (Multifunctional)

Multifunction, digital measuring instrument for low voltage installation safety testing suitable for periodic inspections.

Features:

- Insulation resistance measurement
- PE conductor continuity
- Loop and Line resistance
- RCD test and phase sequence in 3-phase systems.
- Illumination measurement
- Varistor test
- Frequency
- Contact voltage
- Internal memory with a capability to store up to 1000 test results that can later be transferred to a personal computer
- Software package included: InstalLink compatible with MS Windows operating systems

61557 - Available as an order on request item only. Refer to www.cabac.com.au for more detailed information on this product.



Earth Resistance Testers

Analogue Earth Resistance Tester (3 Wire)

The C5209 analogue earth resistance tester is a low cost instrument that measures earth resistance between the meters earth probe and earth electrode of the installation. It is suitable for testing of single earth electrodes.

Features.

- Earth voltage 30V AC (5k Ω /V approx.)
- Accuracy Earth resistance within $\pm 5\%$ of full scale
- Earth voltage within $\pm 5\%$ of full scale
- Measurement system Earth resistance by constant current inverter 800Hz approx. 2mA
- Earth voltage by rectifier type 5k Ω /V approx. 40~500Hz
- Withstand voltage 1500V AC for one minute between electrical circuit and housing case
- Self check facility lead wire connection to C & P terminals and proper auxiliary
- Earth resistance can be checked by pressing "BATT.CHECK" button. OK lamp is illuminated.

Feature	Range	Accuracy
Earth Resistance	10/100/1000 Ω	$\pm 5\%$ FSD
AC Earth Voltage	30V AC	$\pm 5\%$ FSD



Ordering Information:

CABAC Part No: **C5209**

The C5209 is supplied in a gift box, with hard case, a set of test leads (red 15m, green 10m & black 5m) & two earth spikes.

Batteries: 8 x 1.5V AA

Size: 140 x 140 x 96mm

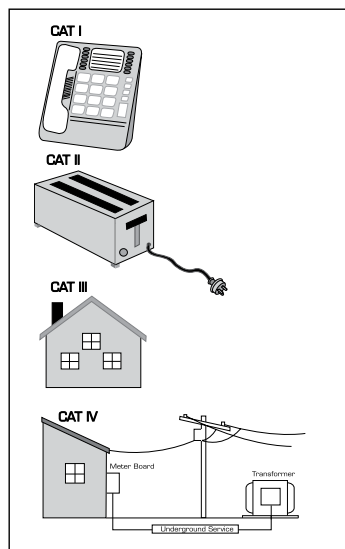
Weight: ± 800 g (incl. battery)

For replacement test leads order AL-4WER, see page J60 for details.

Handy Info (IEC61010-1 2nd Edition 2001-02)

Safety requirements for electrical equipment for measurement, control, and laboratory use - Part 1: General requirements.

Explanation of categories listed in clause 6.7.4



1. CAT I

This covers measurements performed on circuits not connected directly to the mains. Surges in an electronic device e.g. a PCB inside a photocopier, may have some electronic ripple.

2. CAT II

For measurements on circuits connected directly to the low voltage installation e.g an appliance. Appliances such as power tools or household appliances and the electrical cord may have low surges from a motor for example.

3. CAT III

Is for measurements of the circuit in a building installation i.e. plugs and sockets, distribution boards, lighting circuits, underground cable, boreholes connected by underground cable, etc dissipated lightning surges.

4. CAT IV

For measurements at the source of an electrical installation. This covers outside supply lines, overhead lines and the main board connected to overhead lines. These electrical circuits are exposed to substantial surges such as lightning.

The table on the right indicates the applied voltages of an impulse generator. The generator shall produce an open circuit voltage waveform of 1,2/50ms as listed below. Refer to clause 14.9 in the table.

Impulse Withstand Voltages for the Categories					
Nominal Voltages			Voltage Transients		
3-Phase 4 wire systems	3-Phase 3 wire systems	Phase to Neutral*	Transient stresses estimated within the installation without any over-voltage limiting devices		
			CATII	CATIII	CATIV
		50	500	800	1500
66/115	120	100	800	1500	2500
120/208 120/240	240	150	1500	2500	4000
230/400 277/480	500	300	2500	4000	6000
400/690	1000	600	4000	6000	8000
		1000	6000	8000	12000

*Voltage as implied on instrument CAT rating.

Earth Resistance Testers

Analogue 3 Wire Earth Tester

The T2705 analogue earth resistance tester is a professional instrument that measures earth resistance between the instruments earth spikes and an earth electrode of a building. It is suitable for the testing of single earth electrodes such as lightning conductors and small earthing systems. The resistance of conductors for continuity can also be measured. The T2705 offers a two terminal option with reduced accuracy for quick indications of earth resistance. Earth resistance can be measured directly up to 1000Ω.

Features

- Measures earth voltage up to 30V AC
- Show if auxiliary spikes are within range
- Two or three terminal measurement
- Easy to read analogue display
- Factory calibration performed with supplied leads
- Lightweight
- Robust and compact
- Battery check
- Simple push-button operation

Compliance and Safety

IEC61010 CAT III 30V. EN61326: 1997+A1: 1998+A2: 2001
EN55011: 1998 EN61000-3-2: 2000, CE, C_v

Feature	Range	Accuracy
Earth Resistance	0-1000Ω	± 3% FS
Output	±2 mA@820Hz	
Earth Voltage	0-30V AC 40 - 500Hz	±2.5% FS

Ordering Information

Part No: **T2705**
Unit comes in a blow-moulded box with batteries, leads with crocodile clips (red 15m, yellow 10m and green 5m), 2 earth spikes, and operating manual.
Batteries: 6 x 1.5V size AA
Size: L205 x W90 x H55mm
Weight: 514kg with batteries
For replacement test leads order AL-4WER, See page J60 for details.



Digital 3 Wire Earth Tester

The T2720 is a professional instrument that is rugged and o-ring sealed with built-in protection for outdoor use. The instrument is suitable for testing of single earth electrodes such as lightning conductors and other small earthing systems. Continuity of conductors and conduit coupling can also be measured. There is an option to make two terminal measurements, but with reduced accuracy.

Features

- 3½ digit 1999 count LCD
- LED indication for correct electrode range
- Measures to 0.01Ω
- Auto power off
- Data hold
- Two or three terminal measurement
- Measures earth voltage to 200V
- Open loop indication
- Low battery indication
- O-ring sealed case
- Over voltage protection
- Colour coded test leads
- Crowbar protected

Compliance and Safety

IEC61010 CAT III 200V, EN55011: 1998, EN61000-3-2: 1995+A1: 1998+A2: 1998+A14: 2000
EN61000-3-3: 1995, CE, C_v

Feature	Range	Accuracy
Earth Resistance	0 to 19.99Ω steps of 0.01Ω	2.0% ±2d
	0 to 199.9Ω steps of 0.1Ω	or ±0.1Ω
	0 to 1999Ω steps of 1Ω	which ever is greater
Earth Voltage AC	0 to 199.9V (sine 40 to 500 Hz)	
Test Current Output	2mA @ 820 Hz	
Voltage Output	0 to 80V	

Ordering Information

Part No: **T2720**
The unit comes in a blow-moulded box with shoulder strap, batteries, leads with crocodile clips (red 15m, yellow 10m, green 5m), manual, and 2 earth spikes.
Batteries: 6 x 1.5V size AA
Size: L205 x W90 x H55mm
Weight: 572g with batteries
For replacement test leads order AL-4WER, See page J60 for details.



Cable Locators

Cable Locator Set - With Code

Three In One Tester for the tracing of cables in walls up to 40cm, the locating of fuses up to 10cm & their assignment to circuits or circuit breakers and the capacity to accurately identify cables. An essential circuit tracer for live electrical circuits at a very reasonable price.

Features

- Voltage range up to 250V
- Sorting out single wires in a bundle of cables and trace lines in overhead installations
- Tracing and finding of cables in walls
- Assigning current circuits to fuses within fuse panels
- Simple cable locator comprising transmitter and receiver in one unit
- Safe locating via display of a specified letter on the receiver
- Switchable between either locating cable lines or fuses
- Includes sensitivity adjustment maximising the accuracy of both tracing & locating

Compliance and Safety

IEC61010-1 CAT III 300V Pollution Degree 2

Feature	Range
Voltage Range	100V - 250V (50 - 60Hz)
Tracing Depth Cable	Up to 40cm
Tracing Depth Fuses	Up to 10cm
Identification Code	H
Transmission Frequency	Approx. 8kHz
Trans. Repeat Frequency	Approx. 10Hz
Temperature Range	-10°C up to +40°C at RH <80%
Over Voltage Category	CAT III / 300V



Ordering Information

Part No: **T5010A**

A transmitter and receiver in a carry case supplied with a battery and operating manual. Battery: 1 x Standard V 6F22

Dimensions

Receiver: L75 x W34 x H22mm

Transmitter: L75 x W67 x H55mm

Weight

Receiver: 120g including battery

Transmitter: 75g

Cable Tracer Tone Generator

Amplifier Probe

- The Amplifier Probe is designed to identify and trace wires or cables within a group, without damaging the insulation
- Works with any Tone Generator to identify wires
- Volume control for increased sensitivity and adjustable to suit work environment
- Recessed on/off button prevents battery drain
- Power supply is in any 9V battery with a life of approximately 100 hours
- A plug receptacle designed for head set or hand set

Tone Generator

- Tone Generator is a great tool for locating and identifying cable pairs or individual conductors
- Besides providing tone generator, also serves as a continuity and polarity tester
- Test results are displayed by a three coloured LED



Compliance and Safety

EN61326-1, EN55011, EN61000-4-2, EN61000-4-3, CE

Ordering Information

Part No: **T180**

A transmitter and receiver in a carry case supplied with a battery and operating manual.

Battery: 1 x 6F22 9V for each unit

Dimensions

Receiver: L56 x W25 x H270mm

Transmitter: L58 x W34 x H62mm

Weight

250g /set



**Do not use
on Live Circuits**

Cable Locator & Appliance Tester

Professional Cable Locator

Features

- Finding conductors in walls, open circuits, shot-circuits
- Open circuits
- Detecting fuses
- Detecting open circuits and short circuits in floor heating
- Tracing metallic water and heating pipes
- All tests (both voltage free and live) are performed without using any additional instruments
- Automatic and manual sensitivity adjustment
- Auto power off functions
- Backlight
- Inbuilt torch
- Inbuilt non contact voltage detector (Volfinger)

Feature	Range
TRANSMITTER	
Voltage	12...400V
Frequency	0...60Hz
External Voltage Detection	Max.400V AC/DC
Over Voltage Category	CAT III 300V
RECEIVER	
Tracing Depth	The tracing depth depends on medium & application
Cable Locator Mode	Approx. 0...2 meters (single pole application) Approx. 0...0.5 meters (double pole application)
Voltage Detection	Approx. 0...0.4 meters



Ordering Information

Part No: **C1012**

A transmitter and receiver in a carry case supplied with a battery, 2 leads, 2 crocodile clips and operating manual. Battery: 1 x Standard 9V 6F22

Dimensions

Receiver: L192 x W61 x H37mm

Transmitter: L130 x W69 x H32mm

Weight

Receiver: 180g including battery

Transmitter: 130g

EASYTESTDUO Combination PAT & RCD Tester

The easytest DUO is a breakthrough in Australian design and manufacture. It tests all plug-in appliances, power boards, extension leads and 30mA RCDs to the Standard required by AS/NZS 3760.

Features:

- Continuous simultaneous live test results
- Backlight LCD display
- Simple PASS or FAIL indication
- Class1 power-up earth leakage testing
- Class2 power-up earth leakage testing
- Earth Resistance testing
- Polarity testing
- RCD trip time testing
- Tests extension leads and power boards
- Meets AS 61010.031-2004
- Meets AS/NZS 3760:2003

Ordering Information

Part No: **EASYTESTDUO**

The unit comes complete with:

Test probe, alligator clip, IEC adaptor lead, step by step instructions on the back of the unit.

Dimensions:

Weight = 850g

Size = 160(L) x 105(W) x 55(D)mm

Electrical Specifications:

Input supply = 240Vac 50Hz

Output power = 240Vac 10amp

Earth Resistance:

Voltage = 3 to 5Vdc

Current = 103mA +/- 1%

PASS/FAIL = 1 ohm +/- <5%

Earth Leakage:

Class1 PASS/FAIL = 5mA +/- <5%

Class2 PASS/FAIL = 1mA +/- <5%

RCD trip time:

No trip test = 13mA +/- <5%

Trip test = 30mA +/- <5%

Time accuracy = +/- 2 milliseconds



Appliance Testers

The AlphaPat and SuperPat Appliance Tester (Single & 3 Phase)

The AlphaPat is a very powerful and lightweight portable appliance tester packaged for the Australian and New Zealand markets. Available in two versions i.e. the budget version AlphaPat or the complete package SupaPat offering varying features including the option of testing three phase appliances.

The SupaPat comes with an AlphaPat, vinyl label printer (customer logo programmable on request at extra cost), barcode scanner, RSR SimplyPATs Software, Clamp for Differential Earth Leakage testing (3 phase appliances) and accessory leads in a compact bag that gives you a complete appliance testing package for most applications.

Features:

- Tests to AS/NZ3760-2003
- Single and 3 Phase Appliances
- PC Updatable Firmware
- Updatable Software
- Custom Testing
- Earth Bond Test
- Powered Leakage to Earth Test
- Load Testing
- Checks Installation Supply
- On-board Help Menu
- RFID and Bar Code Capable
- One year Warranty
- AlphaPat is Upgradeable SupaPat
- IP41
- Easy To Use with Auto Test Codes

SupaPat Only (Includes Printer)

- Package in Easy to Carry Custom Bag
- Bag is Water Resistant
- Printer attached (customer logo programmable)
- Accessories attached
- 7 Different Colour Tags
- Prints A "DANGER" Label for failed appliances
- Double Barcode Printing
- Fast and Reliable
- Visual Logging with Electrical Units of Measurement
- Comprehensive Software
- Autotest after Code is selected

Compliance and Safety

IEC61010 CAT II 300V (suitable for Appliance Testing), Double Insulation, 

Ranges AlphaPat

Feature	Range	Accuracy
Earth Bond Test	0.00 to 19.99Ω @ 10 or 25 A AC	± 5% + 5 dgt
Earth Screen Test	0.00 to 19.99 Ω @100mA to 20mA	± 5% + 5 dgt
Insulation Test	0.00 to 19.99 MΩ	± 5% + 5 dgt
Differential Leakage Test	0.00 to 19.99 mA	± 5% + 5 dgt
Functional Test		
Current	0.00 to 19.99A	± 5% + 3 dgt
Power	0.00 to 3.69 kVA	
IEC Lead Test	Open, Short, Crossed @ 50V DC	N/A
Clamp Current Test	0.00 to 99.9 mA	± 10% + 5 dgt
	100 mA to 19.99 A	± 5%
RS 232 Interface	Baud Rate 9600	N/A
Memory	4 Mbit Data Flash Memory	N/A

The AlphaPat offers additional testing Features like substitute leakage current, touch leakage current and low range PE leakage test that are not required for AS3760-2003. The AlphaPat does not have an RCD test feature. For RCD testing please consult this catalogue for RCD testers pages J35 & J36.

Note: If the software is opened and the license registered, it is not refundable.

A fee will be charged for the software. Download Demo version from www.simplypats.co.uk



AlfaPat



SuperPat



Ordering Information:

AlphaPat

The unit comes in a bag with manual, code list and cable accessories.

SuperPat

The unit comes in a water resistant carry bag with printer, manual, code list and cable accessories. Both the units are factory tested and calibrated.

Power Supply: 230 V AC 50/60 Hz (+6% or -10%)

Size: L265 x W110 x H185mm

Weight: of AlphaPat 3.5 kg

SuperPat 9.66 kg

Optional Accessory:

Labels for the SuperPat are available in rolls of 500

Catalogue No	Description
TSTCL	Label Clear Vinyl Overlay
TSTRW	Tough Tag - Red with White Strip
TSTBW	Tough Tag - Blue with White Strip
TSTGW	Tough Tag - Green with White Strip
TSTGYW	Tough Tag - Grey with White Strip
TSTOW	Tough Tag - Orange with White Strip
TSTPW	Tough Tag - Purple with White Strip
TSTW	Tough Tag - White
TSTYW	Tough Tag - Yellow with White Strip
RB046	Wax Resin Ribbon (110mm x 91mm B110A)

Appliance Test Tags

Appliance Test Tag Kits All States

- Application Low To Medium Traffic Areas
- Self Laminating
- Tear Resistant Material
- In accordance to AS/NZS3760 and AS/NZS3012 standards
- Quantity 100

NEW

Appliance Test Tag Label & Pen Kit Contains:

All States (Except NSW) Test Colours:

- 15 x Red Tags - Jan To March
- 15 x Green Tags - April To June
- 15 x Blue Tags - July To September
- 15 x Yellow Tags - October To December
- 10 x Orange Tags - 6 Monthly Jan-June
- 10 x White Tags - 6 Monthly July To Dec
- 10 x Black Tags - Yearly
- 10 x Fail Danger Tags
- 1 x Industrial Marker Pen

APTTK - Appliance Test Tag Kit

Appliance Test Tag Label & Pen Kit Contains:

NSW TEST COLOURS:

- 20 x Red Tags - Jan/Sept
- 20 x Blue Tags - Feb/July
- 20 x Orange Tags - Mar/Nov
- 10 x Green Tags - April/Aug
- 10 x White Tags - May/Dec
- 10 x Yellow Tags - June/Oct
- 10 x Fail Danger Tags
- 1 x Industrial Marker Pen

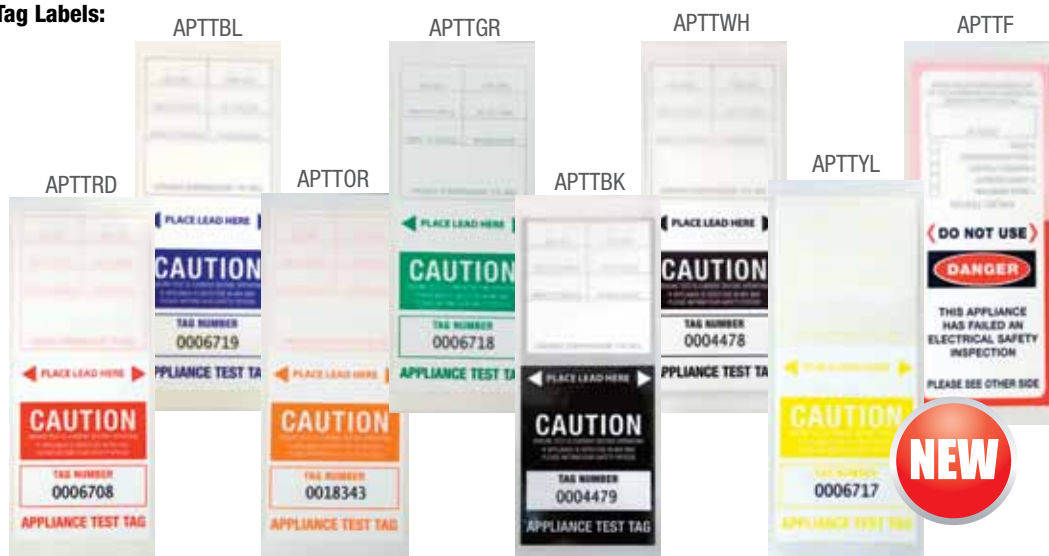
APTTK-NSW (Appliance Test Tag Kit NSW ONLY)



APTTK - Appliance Test Tag Kit (Except NSW)

Individual Appliance Test Tag Labels:

- **APTTTRD** - Red
- **APTTBL** - Blue
- **APTTOR** - Orange
- **APTTGR** - Green
- **APTTWH** - White
- **APTTYL** - Yellow
- **APTTF** - Failed
- **APTTBK** - Black



NEW

Phase Rotation Testers

Phase and Motor Rotation Indicator

Taking the guess out of what direction the motor will turn when connecting the power. This multipurpose three phase rotation tester has an additional feature of checking motor rotation. The unit measures motor rotation by injecting a signal into the motor winding and when the armature is turned the direction will be indicated. In addition C5900 has a non-contact motor rotation facility for 50Hz three phase motors.

Features:

- CAT III 600V
- Compact light and easy to use
- Phase and motor rotation
- Non contact phase rotation indication
- Phase live indication

Safety and Compliance

Conforms to IEC61010 CAT III 600V, CE.

Feature	Range
Input Voltage	100 to 600V AC
Frequency	45 to 75Hz

Ordering Information:

CABAC Part No: **C5900**

The C5900 is supplied in a gift box with soft pouch, test leads, crocodile clips & instruction manual.

Batteries: 1 x 9V 6F22
Size: 124 x 61 x 27mm
Weight: ± 150g

For replacement test leads order AL30RYBKIT, see page J60 for details.



Phase And Motor Rotation Tester

A multi-purpose three phase tester that has the additional feature of checking motor rotation. The unit checks motor rotation by injecting a signal via a push-button into the motor winding and when the armature is turned the phase rotation will be indicated. Ideal for determining which phase sequence when connecting a three phase motor to the supply and ensuring the correct rotation.

Features

- Dual phase and motor rotation
- Phase and open phase indication
- Plug-in leads
- CAT III 600V
- Easy to use
- Electronic circuits
- No mechanical parts

Compliance and Safety

EN61010 CAT III 600V

Feature	Range
Input Voltage	100 to 600V AC
Frequency Range	45 to 70 Hz
Power Consumption Motor Rotation	±14mA
Power Consumption Phase Rotation	±7 mA

Ordering Information

Part No: **T860**

The unit comes in a gift box with soft vinyl case, crocodile clips on plug-in leads, and instruction manual.

Batteries: 1 x 9V 6F22
Size: L153 x W72 x H35mm
Weight: 182g with batteries

For replacement test leads order AL30RYBKIT, See page J60 for details.



Phase Rotation Testers & Low Resistance Ohm Meters (DLRO)

Phase Rotation Tester

A modified phase rotation tester for line workers who require special features to enable them to test on overhead LV lines. The T855 is custom designed for line workers with fused leads to provide overload protection. The unit has one meter of split lead and half meter of cable to allow the line worker to connect across an overhead LV line and have lead distance available when the test is made. The leads are connected to large crocodile clips and the leads are double insulated. Reverse rotation indication available on request depending on order quantity.

Features

- Safe design
- Lightweight
- Push-button activation
- Heavy duty fuse holders with HRC fuses

Feature	Range
Input Voltage	200 to 600V AC
Frequency Range	50 to 60Hz
Operating Temp.	-10 to 40°C @ 80% RH
Fuses	0, 5A x 3 HRC

Compliance and Safety

EN61010 CAT IV 600V, CE

Ordering Information

Part No: **T855**

The unit comes in a gift box with soft vinyl case, crocodile clips on built-in colour coded leads, and instruction manual.

Batteries: None

Size: L134 x W85 x H45mm

Weight: 530g with test leads



Milliohm Meter

A professional instrument capable of very low resistance readings. Ideal for resistance measurements of motor windings, busbars and any electrical connection.

Features

- IEC61010 CAT IV 20V
- Lightweight
- Heavy duty robust carry case
- Waterproof when case closed
- 4 terminal measurement
- Large display
- Overload protection
- Auto off / auto hold
- Max voltage output 20V
- Max resolution 100μW
- Microprocessor controlled

Compliance and Safety

CE, IEC61010-1

Resistance Range	Resistance Steps	Test Current	Accuracy
0-200 mΩ	100mΩ	100mA	1.0% ±2 dgt
0-2000 mΩ	1mΩ	100mA	0.8% ±2 dgt
0-20 Ω	10mΩ	10mA	0.7% ±2 dgt
0-200 Ω	100mΩ	10mA	0.7% ±2 dgt
0-2000 Ω	1Ω	1mA	0.7% ±2 dgt

Ordering Information

Part No: **T4137**

Each unit comes with leads in a carry case and a shoulder strap.

Power Supply

8 x 1.5V batteries

Size

Instrument:

L240 x W190 x H110mm

Lead carry bag:

L250 x W190 x H110mm

Weight

2.3kg



Digital Micro-Ohm Meter

A rugged 4-wire low resistance meter for test in the upper micro Ohm ranges with a one Amp output.

Features

- 4½ Digit
- CAT II 600V
- Very Low Resistance
- 1 μΩ Resolution
- Heavy Duty Housing
- Rechargeable Battery
- Up To 10A Test Current
- 0.25% Basic Accuracy
- RS232 Interface
- IP54 Protection

Feature	Range
Resistance	0-2000μΩ & 20m @ 10A
	0-200mΩ @ 1A
	0-2Ω @ 100mA
	0-20Ω @ 10mA
	0-200Ω @ 1mA

TMPK253



Voltage, Current & Thermocouple Sources

Thermocouple Type-K Source

A compact and useful device for technicians and engineers in the control and instrument field. Easy to connect and input 0, 100, 200, and 400°C on a process circuit or instrument, to calibrate an analogue temperature input or output.

Features

- Four outputs i.e. 0, 100, 200 and 400°C (32, 212, 392 and 752°F)
- Pocket size compact case
- $\pm 0.5^{\circ}\text{C}$ (1°F) resolution

Ordering Information

Part No: **T601K**

The unit comes in a gift box with instruction manual, connection lead and battery.

Batteries: 9V 6F22

Size: L100 x W75 x H30mm

Weight: 250g



4-20mA Current Loop Source

A compact and handy device for technicians and electricians in the control and instrument field. Easy to connect and input 4, 12 or 20mA on a process circuit or field instrument to calibrate an analogue 4-20mA input/output.

Features

- Three outputs i.e. 4, 12, 20mA (0, 50 & 100%)
- Pocket size compact case
- 0.2mA accuracy

Ordering Information

Part No: **T603**

The unit comes in a gift box with instruction manual and battery.

Batteries: 9V

Size: L100 x W75 x H30mm

Weight: 250g



Current and Voltage Source/Meter

A compact calibrator and meter for technicians and engineers in the control and instrument field. Easy to connect and input current or voltages in a process control circuit or instrument to calibrate an analogue input/output.

Features

- Compact folding case
- $\pm 0.1\%$ Resolution
- Provides output source or measures
- Meter accuracy $\pm 0.75\% + 1$ digit
- Max load 350Ω at 20mA
- Low battery indication

Feature	Range	Accuracy
Output Ranges	0 to 19.99	0.01mA
	0 to 24mA	0.01mA
	0 to 1999mV	1mV
	0 to 10V	10mV
	-25 to 125%	0.1%
Source Output	0 - 24mA and 0 to 10V	
Measure	0-50mA and 0.19.99V	

Ordering Information

Part No: **T5900AV**

The unit comes in a gift box with instruction manual, connection lead and battery.

Batteries: 9V

Size: L108 x W96 x H45mm

Weight: 340g



Stud Finder & Tachometer

Digital Stud Finder (Stud / Metal / Voltage)

An essential detector for the building industry to detect the location of studs and beams, metal pipes and fittings and power cables in walls and buildings.

Features

- Simple push-button operation
- Audio and LCD moving segment indication
- Normal or deep scan
- AC wire indication
- Hi-Lo sensitivity switch for "Deep Read"
- Self calibration

Compliance and Safety

CE

Note: The T906 will not detect AC voltage in metal conduit or in shielded cable. It can not detect DC power lines.

Will not detect cables if not in a "Live" state.

Ordering Information

Part No: **T906**

The unit comes in a blister pack with operating manual.

Batteries:

Standard 9V 6F22

Size: L175 x W440 x H30mm

Weight: 195g



Tachometer

The T6236B is a compact tachometer that will measure rpm by optical detection of reflective tape or by mechanical contact. It is easy to use and measurements are clearly displayed on a LCD.

Features

- Contact OR optical
- Lightweight
- Easy to change from contact to optical
- 4 digit 99,999 Count LCD

Compliance and Safety

CE, EN50081, EN50082-1

Feature	Range
RPM	5 to 99,999
Velocity	0.05 to 19,999 m/min or 0.2 to 6560 Ft/min
Basic Accuracy	$\pm 0.05\%$ $\pm 1d$
Max RPM Resolution	0.1 rpm

Ordering Information

Part No: **T6236B**

The unit comes packed in a gift box with mechanical attachments and reflector tape.

Batteries: 4 x 1.5V AA

Size: L160 x W72 x H37mm

Weight: 225g



Temperature - Thermometers

Mini Thermometer with Needle Point

CABAC's T6201 is a simple easy to use thermometer with a needle probe. CABAC's T6202 is a simple easy to use thermometer with a surface probe. It has a digital read out of temperature from -50°C to +250°C, and is very easy and simple to use. With the probe, it can be used to measure air or liquid temperature, or the probe can be inserted into soft substances. The probe is made from stainless steel.

- Measurement from -50 to +250°C
- Resolution 0.1 to 1°C
- Data Hold Function
- LCD Display

T6201 Mini Thermometer with Needle Point

- Supplied in pen style sleeve to hold in your pocket

T6202 Mini Thermometer with Surface Probe

Feature	Range	Resolution	Accuracy
Display	3½ digits	-	-
Temperature	-50 to -20°C	1°C	±3°C
	-19.9 to +49.9°C	0.1°C	±1°C
	+50 to +199.9°C	0.1°C	±(2% rdg +1°C)
	+200 to +250°C	1.0°C	±(2% rdg +1°C)
Response Time	10K/s		
Protection Class		IP40	
Operating Temperature	0°C to 50°C at RH < 80%		
Battery	3V, CR 2032		
Dimensions	Approx. H40 x W30 x L160mm		
Weight	Approx. 16g		



Infra-Red Thermometer

A superb pistol grip infra-red thermometer that has an adjustable emissivity from 1 down to 0.1. This unit can be adjusted to measure the temperature of a stainless steel tank. This is an accurate thermometer with resolution of 0.5°C in manual range or 1°C in auto range.

Features

- 3 Digit 1999 Count LCD
- Back Light LCD
- Emissivity 0.1 to 1
- Celsius or Fahrenheit
- Auto Hold
- Min/Max
- Hi-Lo Beeper
- APO 10 seconds
- Laser Pointer

Compliance and Safety

CE

Feature	Range	Accuracy
Temperature	-30° to 550°C	2% or ± 2°
	-22° to 1022°F	
Emissivity	0.1 to 1	
Field of View (D:S)	10:1	
Response Time	0.25 seconds	
Laser Power	<1mW, Class II	



Ordering Information

Part No: **T111**

The unit comes in a gift box with a battery and plastic pouch.

Batteries: Standard 9V

Size: L148 x W105 x H42mm

Weight: 145g

Temperature - Thermometers

Thermometer / Humidity Meter

A compact dedicated environment meter that is accurate and feature packed. Typical applications are air conditioning in buildings, hothouses, refrigeration, storage rooms or any place where it is important to measure or record min/max, RH% and temperature.

Features

- Compact Size
- Fast Response
- Dual Display
- REL and HOLD Function
- Max/Min Recording
- Resolution: RH 0.1%, temperature 0.1°C/F

Feature	Range	Accuracy
Temperature	-20 to 60°C; -4 to 140° F	0.1°C or °F
Relative Humidity	1 to 99 %	0.1%
Operating Temp	0° to 40°C <80% RH	
Storage Temp	-10° to 60°C <70% RH	

Ordering Information

Part No: **T3004**

The unit comes in a gift box with operating manual.

Batteries: 9V

Size: L240 x W54 x H34mm

Weight: 220g



Dual Thermometer

A feature packed dual channel thermometer in a compact case that is good value for money. It has features for professionals that will cover most of their everyday uses such as minimum and maximum recording and relative measurements. Suitable for applications where up to two thermocouples can be used for two readings in different locations, such as inside and outside a refrigerator.

Features

- Compact Size
- Dual Input and Display
- Auto Power Off
- Time Display
- Min/Max Recording
- Data Hold
- Relative Measurement
- Celsius or Fahrenheit
- Two Type-k thermocouples
- Resolution 0.1°C; 0.1°F

Compliance

CE

Feature	Range	Accuracy
Temperature +2°F	-200 to 1370°C; -326 to 2498°F	±0.3% +1°C ±0.3%
Input Protection	60V DC or 24 Vrms AC max	
Operating Temp	0.1°C to 40°C 80%RH	
Storage Temp	-10°C to 60°C 70%RH	



Ordering Information

Part No: **T308**

The unit comes with operating manual, two thermocouples type-k and battery.

Batteries: 9V

Size: L164 x W54 x H34mm

Weight: 200g

Temperature & Humidity Loggers

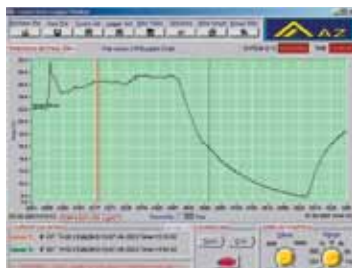
Temperature Data Logger Set / T8829S Temperature and Humidity Data Logger Set

The T8828 and T8829 are handy, compact data loggers for temperature (T8829 with humidity) recording that connects to a PC via an RS232 cable. The kit includes the RS232 interface cable, software and a data logger. All functions are controlled from a PC and the loggers are ideal for use in refrigeration, air conditioning, trucking, agriculture etc.

Features

- LCD Display
- Waterproof Housing (T8828S)
- Water Resistant Housing (T8829S)
- Min/max Alarm Setting
- Low Battery Indicator
- Software and Logger in Kit or apart
- Indicator LED red for Hi-Lo Alarm
- Indicator LED yellow for Record
- Real Time Stamping

Feature	Range	Accuracy
Temperature	-40 to 85°C / -40 to 185°F	±0.6°C -20 to 50°C
		±1.6°C -40 to -20°C
		±1.6°C 51 to 85°C
Humidity (T8829)	1 to 100 % RH	± 3%RH
Sample Points	1k, 2k, 4k, 8k, 12k & 16k	
Resolution	0.1°C or 0.1°F	



T8828S



Ordering Information

Part Nos:

T8828S Complete logger and software kit

T8828 Temperature logger only

T8818 Software and cable for both types of loggers

Batteries: 1 x ER3 or CR2 Lithium

Size: Logger - H80 x W55 x L22mm

Interface - 124 x 92 x 37mm

Cable - 1.5m to DB9 Connector

Dual Thermometer Logger

An easy to use dedicated, dual channel, type-k thermocouple temperature data logger. Easy to use with software designed with an easy operating panel for recording and downloading temperature measurements with real time stamping. The Windows based software uses a virtual panel that has full control of the instrument. Ideal for the professional who wishes to record temperature via two channels from -200° to 1370°C.

Features

- Dual Input
- 16000 Readings Recorded
- Triple Display
- Time Function
- Windows Based Software
- RS232 Interface
- Resolution 0.1°C or F

Feature	Range	Accuracy
Temperature	-200 to 1370°C;	±0.3% +1°C;
	-328 to 2498°F	±0.3% +2°F
Operating Temperature	0 to 50°C <80% RH	
Storage Temperature	-20 to 60°C <70% RH	



Ordering Information

Part No: **T306**

The unit comes in a gift box with a soft carry case, operating manual, battery, RS232 interface cable and two type-k thermocouples.

Batteries: 9V

Size: L184 x W64 x H30mm

Weight: 210g



Temperature Probes & Accessories

Thermocouple to DMM Adaptor

A simple plug adaptor for thermocouple plugs and fits most multimeters.

- Socket Space: 19mm
- Shrouded Banana Plug
- Overall size: H61 x W34 x L13mm

TBK



Bead Type-K Thermocouple

Type-k thermocouple wire glass insulation.

- Length: 95cm
- Range: -40 to 400°C
- Accuracy: 1.5%

TB01



Immersion Probe Type-K

- Range: -50° to 700°C, -58° to 1292°F
- Tolerance: $\pm 2.2^{\circ}\text{C}$, $\pm 3.9^{\circ}\text{F}$

TP02



Flat Surface Probe Type-K

- Range: -50° to 400°C, -58° to 752°F
- Tolerance: $\pm 2.2^{\circ}\text{C}$, $\pm 3.9^{\circ}\text{F}$

TP03



Piercing Probe Type-K

- Range: -50° to 800°C, -58° to 1472°F
- Tolerance: 2.2°C , $\pm 3.9^{\circ}\text{F}$

TP04



Air Probe Type-K

- Range: -50° to 800°C, -58° to 1472°F
- Tolerance: 2.2°C , $\pm 3.9^{\circ}\text{F}$

TP06



Thermal Imaging



The complete FLIR i Series

Measurement				
Temperature Range	0°C to +250°C (+32°F to +482°F)	-20°C to +120°C 0°C to 350°C	-20°C to +120°C 0°C to 350°C	-20°C to +120°C 0°C to 350°C
Accuracy	±2°C (±3.6°F) or 2% of reading			
Measurement Correction	Adjustable emissivity factor from 0.1 to 1.0; emissivity table is provided			
Manual/Set Up Commands	Pallets (black & white, iron & rainbow)	yes	yes	yes
	C/F	yes	yes	yes
	Language	yes	yes	yes
	Date & Time Format	yes	yes	yes
	Auto Adjust (Manual/Automatic)	—	yes	yes
Detector Data				
Detctor Type	Focal plane array (FPA), uncooled microbolometer 7.5-13µm			
Spectral Range				
IR Resolution	80 x 80 pixels	120 x 120 pixels	140 x 140 pixels	180 x 180 pixels
Visual Resolution	-	0.6 megapixel	2.3 megapixel	2.3 megapixel
Image Presentation				
Display	2.8" Colour LCD	Built in display, 3.5" Colour LCD, 16K Colour		
Laser in IR Image	-	-	-	yes
IR Fusion Picture in Picture (PIP)	-	PIP (fixed)	PIP (3 steps)	PIP (PIP scalable)
IR Imaging and Optical Data				
Field of view/min.focus distance	17" x 17"	25° x 25°	25° x 25°	25° x 25°
Min. focus distance	0.6m (2ft.)	0.12m (0.41ft.)		
Thermal distance (N.E.T.D)	< 0.1°C (< 0.18° F)			
Image Storage				
Storage Type	miniSD card, 512MB (>5000 images)	Removable SD micro memory card (1GB), storage capacity (>1000 images)		
Files Format	Standard radiometric JPEG			
Laser Pointer				
Laser pointer	-	Yes		
Laser class	-	Class 2		
Power System				
Battery Operation Time	5 hours			
Battery Information	Rechargeable Li Ion Battery	Rechargeable Li Ion Battery, Field replaceable, Display shows battery status		
Charging System	In camera, AC Adaptor			
AC Operation	AC adapter, 90-260 VAC input, 5V output camera			
Environmental Data				
Operation Temperature Range	0°C to +50°C (+32°F to +122°F)	0°C to +50°C (+32°F to +122°F)		
Ruggedness Test (Shock)	25G (IEC 60068-2-29)			
Ruggedness Test (Vibration)	2G (IEC 60068-2-6)			
IR Rating	IP43	IP54 protect against dust/splash		
Data Communication Interfaces				
Video Output	-	MPEG4 via USB		
USB - data transfer to/from PC	yes			
Physical Data				
Weight	0.75lbs (340g)	1.32lb (600g)		
Size (L x W x H)	8.8" x 3.1" x 3.3"	9.3" x 3.2" x 6.9"		
Built-in Language Versions	21 different languages			

Misc Meters, Lux, Sound, Capacitance

Illuminance (Lux) Meter

The T630 is a dedicated, compact 3½ LCD digital light-meter. Illuminance is measured in Lux (Lumen per square meter) and is the amount of luminous flux (Lumen) per unit area at a point. The meter has a CIE photopic spectral response that evaluates the Lux closely to the capability of the human eye. The T630 has a detachable sensor head with a 1.5m cable and a sensor cover.

Features

- 3½ digit 1999 Count LCD
- Range from 0 to 200,000 Lux
- Low battery indication
- Update rate 2.5 x per second
- Resolution 0.01 Lux
- Spectral response CIE photopic
- Back light
- Max hold
- Data hold

Feature	Range
Lux Range	0 to 20, 200, 2000, 20 000, 200 000
Accuracy	±3% +10 dgt for CIE standard illuminant A (2856K) 23°C ± 5° < 70% RH
Acceptance Angle	f'2 < 2% cosine corrected (150°)
Analogue Output	0.1mV/count
Battery Life	± 200 hours with standard carbon zinc batteries

Ordering Information

Part No. **T630**
The unit comes in a soft pouch, with batteries and instruction manual.
Batteries: 4 x 1.5V AA
Size: L170 x W44 x H40mm
Weight: 220g with batteries



Sound Level Meter

Features

- 3½ digit LCD
- Max/min recording
- AC signal output
- Low battery indication
- Fast and slow time weighting
- A and C frequency weighting
- Sampling rate 2 x per second
- ±70 hours battery life
- Bargraph display
- Over range indicator

Compliance and Safety

IEC651 Type 2, ANIS S1.4 Type 2

Feature	Range	Accuracy
Sound	Lo: 32dB to 80dB Med: 50dB to 100dB Hi: 80dB to 130dB	1.5dB at reference range Resolution 0.1dB
Detector Indicator	Fast: 125mS Slow: 1S	
Analogue Output	AC 1 Vrms FS for each range. Zout = 100Ω	
Reference Sound	94dB at 1kHz	
Microphone	¼" ECM	

Ordering Information

Part No: **T325**
The unit comes in a hard cover case with batteries, operating manual, calibration screwdriver, and spare sponge microphone windshield.
Batteries: Standard 9V 6F22
Size: L240 x W62 x H39mm
Weight: 224g



LCR Meter

The T24 LCR Meter is a hand held digital meter for measuring resistance to 20MΩ, capacitance to 1000μF and inductance to 200H.

Features

- 3½ digit 1999 Count LCD
- Capacitance, Resistance & Inductance
- Low Battery Indication
- Update rate 2.5 x per second
- Diode Test
- Low Battery Indication

Compliance and Safety

CE, CV

Feature	Range	Accuracy
Resistance	20	± 1% + 10 dgt
	200	± 0.3% + 3 dgt
	2k, 20k, 200k, 2M	± 0.3% + 3 dgt
	20MΩ	± 2% + 2 dgt
Capacitance	200p, 2n, 20n, 200n	± 1% + 3 dgt
	2μ, 20μ, 200μ	± 2% + 3 dgt
	2000mF, ≤ 1000μF	± 3% + 3 dgt
	> 1000 μF	± 5% + 10 dgt
Inductance	200μ, 2m, 20m, 200mH	± 3% + 3 dgt
	2, 20, 200 Henry	± 5% + 10 dgt

Ordering Information

Part No: **T24**
The unit comes in a gift box with test leads, spare fuse, battery installed and operating manual.
Batteries: 9V 6F22
Size: L200 x W90 x H40mm
Weight: 400g
For replacement test leads order AL04,
See page J60 for details.



High Voltage Test Equipment

High Voltage Proximity Detector

The SEW 275 HP is a high voltage proximity detector. It has eight voltage detection settings from 240Vac to 275kVac. The 275 HP consists of an internal pickup sensor plate, a sensitivity selector, a visual and a sound annunciator. With the 275 HP, physical contact with electrical conductors is not necessary when testing for live lines. This tester works by proximity.

Features

- Sealed by "O" rings
- 8 voltage settings : 240Vac, 2kV, 6kV, 11kV, 22kV, 33kV, 132kV, and 275kV
- High bright LEDs visual & sound indication
- Use 3 x 1.5V "C" batteries
- High impact nylon casing
- Non-contact work by proximity
- Compatible with most link sticks
- Suitable for indoor & outdoor applications
- Detect low voltage on any systems
- Easy access to batteries
- No special parts required

Compliance and Safety

EN61000-3-2 EN61000-3-3 EN61326-1

EN55011 EN61000-4-2 EN61000-4-3 EN61000-4-4

EN61000-4-5 EN61000-4-6 EN61000-4-11

Feature	Range
Voltage Testing	240V/2/6/11/22/33/132 kV/275kV
Operating Temp	-15°C to +55°C
Humidity	93%RH @ 40°C



Ordering Information

Part No: **T275HP**

The unit comes in a gift box with a soft vinyl case with operating manual and batteries.

Batteries: 3 x 1.5V C type

Fuse: 15A/600V IR 100kA

Size: L260 x Ø97.5mm

Weight: 502.3g including batteries

RITZ SuperTester, AC Voltage Testers

Two high voltage proximity testers for proving "live" on electrical conductors. A RITZ SuperTester is mounted on a "sun dial" connection on a "Hot Stick" and when at a certain distance from a "live" high voltage AC line, will indicate with a loud audible alarm and bright LED indicator.

Features

- Proximity Test
- Loud Audible Alarm
- Clear Visual LED Indication
- Self Test Switch
- Pilot LED Low Battery Indicator
- Working Frequency 50/60 Hz
- Packed in a Rugged Reinforced Plastic Carry Case
- Battery: 9V 6F22
- Dimensions: H135 x W32 x L 90mm
- Weight: 440g

Catalogue No.	Range
H1990/ST-138	1kV to 138kV
H1990/ST-800	1kV to 100kV or 100kV to 800kV



High Voltage Test Equipment

RITZ CT Range of Contact AC Voltage Testers

A range of four testers available on order for touch testing live lines from 70V to 36kV. They are attached to the end of a "Hot Stick" with the "sun dial" type connection. It features a self-test, a loud audible alarm and clear visual LED indication. These units are easy to use, safe and reliable voltage indicators.

Features

- Touch Test
- Loud Audible Alarm
- Clear Visual LED Indication
- Test Switch
- Low Battery Indicator
- Working Frequency 50/60 Hz
- Packed in a Rugged Reinforced Plastic Carry Case
- Battery: 9V 6F22
- Dimensions: 60 x 180mm
- Weight: 290g

Compliance and Safety

IEC61243-1 FRO CT2-6, CT5-15 and CT12-36

Catalogue No.

Range

CT0.07	70V to 1kV
CT2-6	2kV to 6 kV
CT5-15	5kV to 15kV
CT12-36	12kV to 36kV



Touch Testers

The T21XHVD series of touch testers are reliable with a self testing facility.

Features

- Manual Arming
- HV Touch Self Arming
- Loud Acoustic Alarm
- Bright LED Indication
- Low Battery

Compliance and Safety

IEC61243-1

Feature	Range	Min. Threshold	Accuracy
Voltage T213HVD	11kV	>1.65 & 4.4	
T215HVD	66kV	>9.9 & 26.4	± 10%
T217HVD	11 to 33kV	>3.3 & 4.95	
T218HVD	44 to 132kV	>6.6 & 19.8	
Voltage Frequency	10Hz to 500Hz		

Ordering Information

Part No:

T213HVD or T215HVD or T217HVD or T218HVD

The unit comes in a soft canvas bag with operating manual, various contact tips and battery.

Batteries: 9V, 6F22

Fuse: 15A/600V IR 100kA

Size: L 85 x Dia. 45mm

Weight: 560g



Line "Live" Indicators

A useful indicator for high voltage power lines that can be secured onto a single, unshielded core to display a "live" condition on that cable core. The T285HD is powered by induction from the live line and displays on an LCD a "live" symbol as shown in the picture. Applications are quick identification of live phases on a line or in a sub-station. Ideal for installation of new and existing distribution systems.

Features

- Large LCD
- Continuous Monitoring
- Easy to Install
- No Batteries
- Permanently Mounted
- Clip Dimension 40mm

Compliance and Safety

EN61326-1:1997 / EN55011:1998 / EN61000-3-2:2000. EC61000-3-3:1995 / EN61000-4-2:1995+A1:1998. EN61000-4-3:1996 / EN61000-4-4:1995 EN61000-4-5:1995 / EN61000-4-6:1996. EN61000-4-11:1994

Item	Range
T285A	2.2 to 3.3 kV
T285B	6.6 to 11 kV
T285C	22 to 33 kV



Ordering Information

Part No: **T285A, B, C**

for the required voltage range as indicated in the table.

The unit is packed in a gift box with operating manual.

Size: L101 x W60 x H21mm

Weight: 117g

High Voltage Test Equipment

Personal Voltage Detector

A personal voltage warning device that is worn on the outside of clothing, attached to a belt or helmet. It detects voltage at various distances and is ideal for electrical workers, firemen, police and emergency services. The AC sensor plate picks up the radiated electric field in volts per meter. Some typical applications are voltage alert for electrical workers and emergency services, identifying AC live cables, tracing live wires, detecting residual or induced voltages, and finding breaks in cable.

Features

- Voltage Detection from 240V & Upwards at Variable Distances
- Warns of Lethal Voltages
- Waterproof IP65
- High Pitch Sound
- Ultra Bright LED Indication
- Internal Circuit Test Function
- High Impact Casing
- Low Power Consumption. Battery lasts ± 6 Months
- Low Battery Indication
- Frequency Range 40 to 70Hz

Compliance and Safety

IEC61010 for Vibration, Drop and Impact, IEC68-2-29 for Bump Test, IEC68-2-1 for Cold Temperature, IEC68-2-2 for Dry Heat, IEC68-2-3 for Damp Heat, CE, CV

Line/Earth Voltage	Detection Distance
240V	5cm $\pm 20\%$
5kV	2.5 m $\pm 20\%$
10kV	3.5m $\pm 20\%$
22kV	6.25m $\pm 20\%$
33kV	8m $\pm 20\%$
50kV	10m $\pm 20\%$
Frequency Range	40 to 70 Hz



Ordering Information

Part No: **T288**
Each unit comes with test leads, soft case, manual and battery.
Batteries: 1 x 9V 6F22
Size: H115 x W67 x L30 mm
Weight: 146g with battery

Phase Tester up to 16kV / H1876-4/B Extensions for Conversion to 48kV

A portable kilo-voltmeter from RITZ suitable for measurements up to 48kV. The test instrument is used to check voltages between phases, phase to earth and same phase for connection purposes. The test instrument attaches to electrical "Hot Sticks" to enable testing at the required approach distance or to reach an overhead line. The test probes can be attached to an overhead line by means of "hook type" fittings and a reel extended interconnection cable is used to electrically connect to the probes.

Features

- Sundial Connection to "Hot Sticks"
- Clear Analogue Display
- Extendible Cable Link 16kV Protected
- Convenient Carry Box
- Includes Two Universal Sticks (H1760-1)
- Reel Cable Length of 6.5m

Feature	Range
Basic Voltage Range for H1876/B	1kV to 16kV
48 kV with Extension Resistors	16kV to 48kV (multiply reading x 3)

Ordering Information

RITZ Part No:

H1876/B Phase tester up to 16kV

H1876-4/B Resistor extension pair for measurements up to 48kV

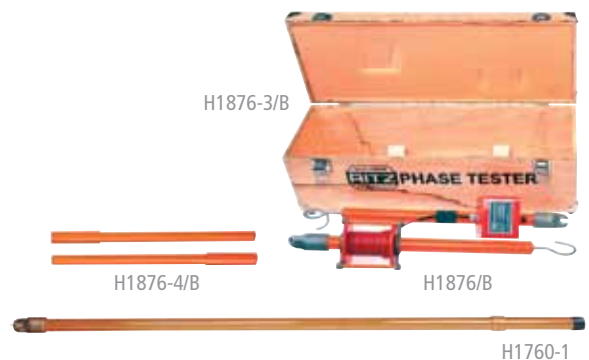
H1876-3/B Wooden case

H1760-1 Universal sticks 1800mm long x Ω 32mm

The units are packed in various parts as listed above.

Batteries: None

Weight: 8kg (phase tester, with 48kV extension and wooden case)



High Voltage Test Equipment

Round Hot Sticks (supplied with carry bag)

Catalogue No.	Number of Sections	Extended Length m	Bottom Diameter mm	Weight kg
VMR-15/LB	1	1.25	25	0.8
VMR-30/LB	2	2.70	32	1.7
VMR-45/LB	3	3.95	32	2.5
VMR-70/LB	4	5.20	32	3.3
VMR-90/LB	5	6.45	32	4.3



Universal Hot Sticks (no bag supplied)

Catalogue No.	Extended Length m	Bottom Diameter mm	Weight kg
H1760-1	1.885	32	1.3
H1760	2.57	32	1.7
H1760/E-3-657	3.65	32	3.5



Telescopic Triangular Hot Sticks (Supplied with carry bag and measurement markings)

Catalogue No.	Number of Sections	Extended Length m	Retracted Length m	Bottom Diameter mm	Weight kg
VTT-1/5MB	5	6.42	1.59	45	2.9
VTT-1/4MB	4	5.10	1.54	41	2.2
VTT-1/6MB	6	7.77	1.64	49	3.6
VTT-1/7MB	7	9.14	1.68	52	4.4
VTT-1/8MB	8	10.05	1.72	56	5.5
VTT-1/9MB	9	12.05	1.76	51	6.6



VTT-1/4MB



HSFP - House Service Fuse Puller

- Weight 0.06 kg
- "Sunrise" attachment for hotstick

Part No: **HSFP**



For full range refer to section E of this catalogue

Phone: 133 122 | Fax: 1300 303 310

Test Leads & Accessories

PVC Insulated Test Lead and Crocodile Clips

Set of red and black PVC insulated test leads with right angled banana plugs, and threaded test 2mm pins for crocodile clips. Rated 600V, 5A. Length: 840mm.

AL24



AL24

Double Silicone Insulated Test Leads

Set of double silicon insulated test leads with right angled banana plugs with shrouded 4mm male banana plug test points. AL38C fits onto this probe. Length: 1000mm

AL35L Shrouded Test Lead

AL38C Red and Black Crocodile Clips, 35.5mm Spring Tension Mouth



AL35L

Stacking Leads

Silicon insulated stacking leads with shrouded straight banana plugs. Length: 500mm

AL37R Red Stacking Lead

AL37B Black Stacking Lead

AL37G Green Stacking Lead



AL37R

Silicone 2mm Insulated Test Lead

Double silicone insulated red and black test leads with fused probes. Takes 6mm x 25mm fuses.

Rated 600V

Length: 1000mm

AL32F

Fuses for fused leads

TF0.5 0.5 A 500V 50kA x 2 per pack

TF10 10 A 500V 50kA x 2 per pack



AL32F

High Voltage Insulation Tester Test Probes

Large test probe with shrouded 4mm banana plug tip, super insulated silicon wire. Only to be used for insulation testers. Rated 10kV 3W output or 1000V input. Length: 2700mm

AL53



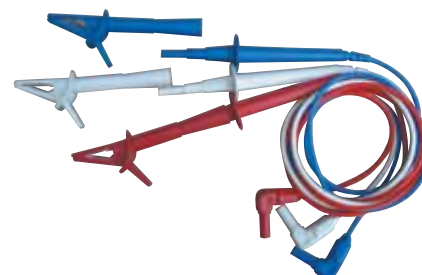
AL53

Phase Coloured Lead Set

Set of double insulated silicone insulated test leads with right angled banana plugs and shrouded 4mm banana plug probes in colours red, white and blue. Length: 1000mm.

The kit includes three large crocodile clips.

AL30RYBKIT



AL30RYBKIT

Test Leads & Accessories

Leads Set for Active, Neutral and Earth

Set of double insulated silicon insulated test leads with right angled banana plugs and shrouded 4mm banana plug probes in colours red, black and green. Length: 1000mm. The kit includes three crocodiles clips

AL30RBGKIT



AL30RBGKIT

Aust. Plug to 3 Core Banana Plug Adaptor

Three core cable with Australian 10A three pin power plug and three straight banana plugs colour coded red, black and green. Ideal for quick connection to a GPO. Length: 1000mm.

TEL-EL



TEL-EL

Moulded UL94-0 PVC with Probes and Plugs

IEC61010 CAT III 1000V. Moulded UL94-0 PVC red and black with grey probes and plugs.

AL28-1 Leads set with probe tip \varnothing 2mm



AL28-1

Moulded UL94-0 PVC with Probes and Plugs

IEC61010 CAT III 1000V. Moulded UL94-0 PVC red and black with grey probes and plugs.

AL28-3 Leads set with probe tip 4mm dia banana plugs.



AL28-3

Moulded UL94-0 PVC with Probes and Plugs

IEC61010 CAT III 1000V. Moulded UL94-0 PVC red and black with grey probes and plugs.

AL28-5 Leads set with probe tip 2mm dia threaded. With crocodile clips.



AL28-5

PVC Insulated Test Leads CAT IV 1000V

Brymen right angled banana plug test lead 3mm test pin for CAT IV 1000V.

• Length: 900 mm

AL04



AL04

Test Leads & Accessories

Test Leads Set

For Earth resistance testers. Set of test leads and four earth spikes in a soft material bag.

Length:	Black Wire:	3m
	Blue Wire:	20m
	Green Wire:	50m
	Red Wire:	36m
	Spike:	45cm

AL-4WER



High Voltage Probe for Use with a Digital Multimeter

This high voltage probe is designed for indoor use with a digital multimeter. Safety rating for CAT III Pollution Degree 2. It comes with a grounding clip and it is intended for use with low energy circuits such as HV fences and TV sets.

Feature	Range	Accuracy
Input Impedance	500 Mohms	
Attenuation Ratio	1000:1	
Accuracy	DCV (0-20kV)	1%
	DCV (20kV – 30kV)	2%
	ACV (0-20kV)	Typically 5% at 60Hz
Max Working Voltage	30kV DC or 20kV AC	
Cable Length	1m	



Ordering Information

Part No: **PD20**

The unit comes in a box with instruction manual.

Batteries: none

Weight: 508g

Meter Carry Pouches with CABAC logo

CPOUCH-1

A soft meter pouch for one DMM.

CPOUCH-2

A soft pouch for two DMMs or a DMM and clamp meter or a DMM and temperature meter or logger or a T1800 or T1851 style insulation tester.

TBMHC20

A soft pouch for pocket DMMs e.g. TBM22 or TBM27.



Series Rubber Boot and Pouch Set

T27RBC T27 Series Rubber Boot and Pouch Set

Set comprises:

- Push button guard
- Rubber holster
- Shoulder strap
- Nylon pouch



Meter Kit Cases

TESTKIT1

Meter Kit with T7114 Volt Finger, BM821 DMM, TBM116 Clamp, T2732 Ins. Tester & WICKIT1 Case

TESTKIT1

TESTKIT2

Meter Kit with T7107A Volt Finger, BM822 DMM, TBM118 Clamp, T2732 Ins. Tester & WICKIT1 Case

TESTKIT2

TESTKIT3

Meter Kit with BM525 DMM Logger, BU-82X USB Cable, T202 Clamp Adaptor & WICKIT1 Case

TESTKIT3

TESTKIT4

Meter Kit with TBM685 DMM, TBM116 Clamp, T606 Phase Rotation Tester, T5010A Cable Locator, TEL1TL Socket Tester & WICKIT3 Case

TESTKIT4

TESTKIT5

Meter Kit with TBM685 DMM, C2001C Clamp, T2732 Ins. Tester, TR-PCB Resistors, T2712EL RCD Tester, T2726 Loop Impedance, TEL1TL Socket Tester, & T606 Phase Rotation & WICKIT3 Case

TESTKIT5

TESTKIT6

Aircon Meter Kit with TBM827 DMM, T9005 Clamp, T111 IF Thermometer, T3004 RH%/Temp. T8828S Temp Logger, T308 Temp Logger & WICKIT3 Case

TESTKIT6

TESTKIT7

Enviro Meter Kit T6201 Thermometer, T3004 RH & Temp, T111 IF, T630 Lux, T325 Sound & WICKIT1 Case

TESTKIT7

TESTKIT8

Meter Kit with T2732 Ins. Tester, T2712EL RCD tester, T2726 Loop Impedance, C2001C Clamp, T8221C DMM & WICKIT3 Case

TESTKIT8

TCASE2 METER KIT

Meter Kit with TBM682 Digital Multimeter Autocheck, BM111M Digital Clamp meter, VAI1000 Analogue Insulation Tester 500 & 1000V, T7107A Voltfinger & WICKIT1 Waterproof Instrument Case.

TCASE2

TVMKIT1 METER KIT

Meter Kit with HY4300 Digital Multimeter & Network Cable Tester, VAI1000 Analogue Insulation Tester 500 & 1000V, VDC600 Digital Clamp Meter & VAC300 Analogue Clamp Meter, comes in a plastic carry case.

TVMKIT1

TVMKIT2 METER KIT

Meter Kit with HY4300 Digital Multimeter & Network Cable Tester, VAI1000 Analogue Insulation Tester 500 & 1000V & VAC300 Analogue Clamp Meter, come in a plastic carry case.

TVMKIT2



TCASE2



Meter Kit



TVMKIT1

Waterproof Cases

Waterproof Cases

- Airtight, waterproof, crushproof & dustproof
- High impact thermoplastic moulded
- Heavy duty use
- Suitable for use as a brief case or tool box
- Available with serrated foam filled or foam & tool pouches

WIC465 Waterproof Instrument Case (empty) - 465x360x170mm

WIC575 Waterproof Instrument Case (empty) - 575x420x210mm

WICKIT1 Waterproof Instrument Case - 465x360x170mm
Complete with Serrated Foam Filled Insert

WICKIT2 Waterproof Instrument Case - 465x360x170mm
Complete with Serrated Foam Filled Insert & Tool Pouch Insert

WICKIT3 Waterproof Instrument Case - 575x420x210mm
Complete with Serrated Foam Filled Insert

WICF465 Waterproof Case Foam Insert 465mm

WICF575 Waterproof Case Foam Insert 575mm

WICTOI Tool Pouch Insert



WICKIT2

Triple R Service & Calibration Policy



On accepting an instrument to be repaired the following procedure is to take place.

1st R REPAIR

1. Provide a quote for labour and parts to repair the instrument to manufacturers specifications.
2. Repair the instrument after receiving written acceptance of the quotation (a purchase order from the referring wholesale branch is sufficient).
3. The work shall be warranted for a maximum of 3 months.

2nd R REPLACE

If the customer elects not to have the instrument repaired then they have the choice to accept as close an equivalent as possible an instrument we supply at a price suggested by the referring wholesaler or pay the minimum quotation fee for the time taken to diagnose the problem.

Please note:

- * The quotation of repair and replacement parts is subject to availability from the supplier especially in the case of metres not sold by Cabac.
- * The quotation fee will be waived if the customer purchases one of our suggested replacement meters.

3rd R RETURN

If the customer elects to pay the quotation fee we will return the instrument to the referring wholesale branch.

Please note:

- * The quotation fee will be charged to the referring wholesaler for unclaimed goods left for more than 3 months.

CABAC Offers A Calibration Service For Instruments

The Calibration can either be Factory Standard calibration or NATA accredited calibration. Please note part numbers for calibration of Multimeters, Clamp meters, Installation testers, Multi-function and appliance testers. An installation tester is defined as an instrument that conducts RCD, LOOP or Insulation testing. Multifunction testers which encompass all these testers in the one unit will attract a higher calibration price due to the extra time taken to check all functions.

Part Number	Description	Part Number	Description
CALSTANMM	Factory Calibration Multimeter	CALNATAMM	NATA Calibration Multimeter
CALSTANMF	Factory Calibration Multifunction testers	CALNATAIMF	NATA Calibration Multifunction testers
CALSTANCLAMP	Factory Calibration Clamp	CALNATACLAMP	NATA Calibration Clamp
CALSTANAPP	Factory Calibration Appliance testers	CALNATAAPP	NATA Calibration Appliance testers
CALSTANINS	Factory Calibration Installation testers	CALNATAINS	NATA Calibration Installation testers

