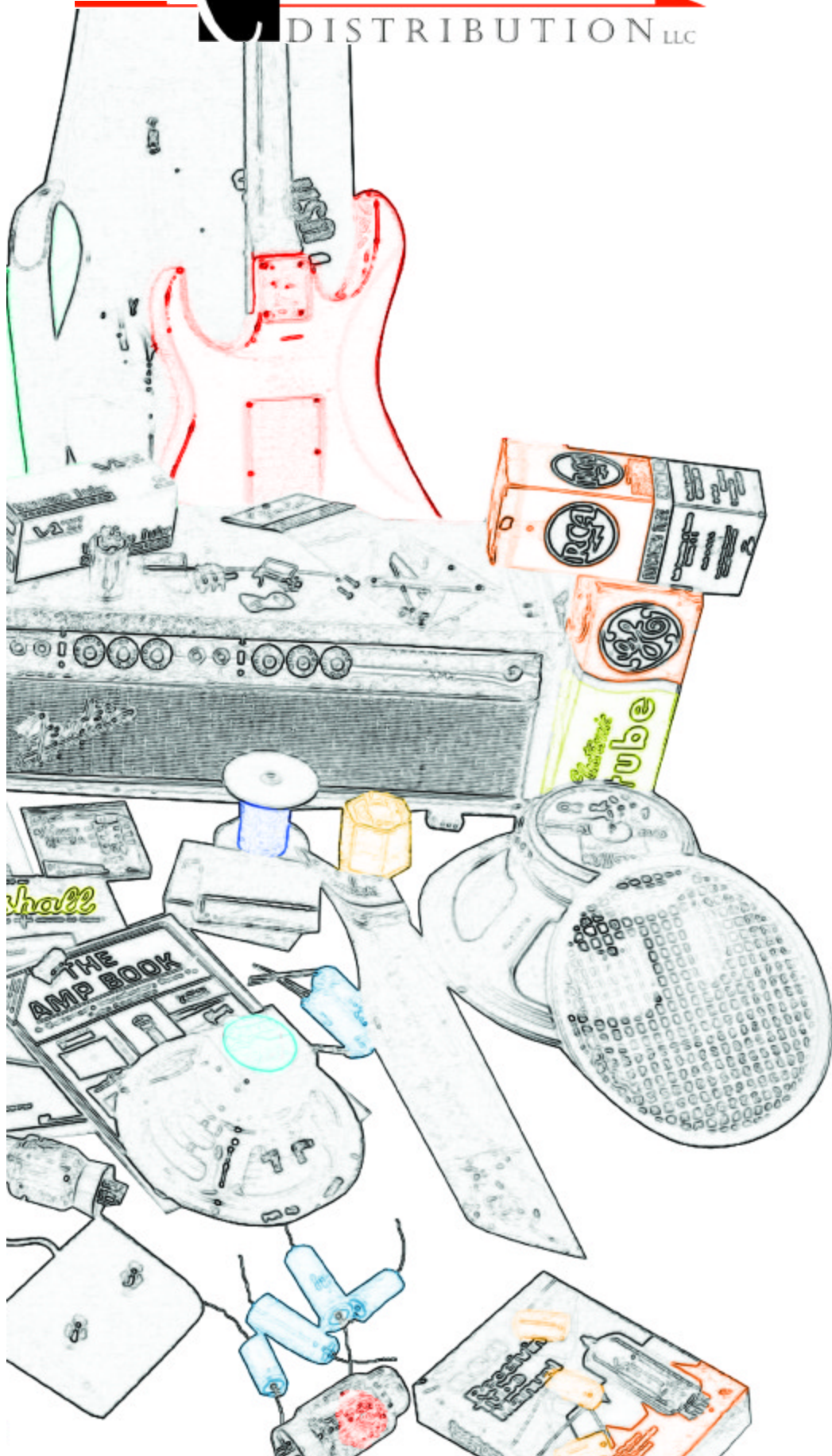




DISTRIBUTION LLC



2001 2002
WHOLESALE DEALER CATALOG



6221 S. Maple Ave. Tempe, AZ 85283 • USA

(480) 755 4712 or (800) 840 0330 • fax: (480) 820 4643

DISTRIBUTION LLC

Dear Customers:

We are pleased and excited to introduce our first dealer catalog to you. We at CE Distribution are committed to providing excellent customer service, product availability, fast delivery, fair pricing, and honest, ethical business practices. We are confident that these qualities will benefit you as our customer.

We believe that customer support and service are most essential to our success. As a small family owned and operated business, you will find we can be very responsive to your needs.

We are committed to stocking large quantities of all our products for fast delivery. Our goals are to have all the products in stock and to ship your orders promptly upon receipt. We want to make sure that you have the item you need when you need it. In fact, if what you need is not in the catalog, we still may be able to get it for you, so give us a call.

We will always do our best to meet these goals and to provide you with the best service and products around. We look forward to doing business with you!

Sincerely,

CE Distribution

Ordering Information

Telephone and Fax orders accepted

ph: **800.840.0330** or **480.755.4712**

fax: 480.820.4643

e-mail: info@cedist.com

For more information, please

visit our website at **www.cedist.com**.

\$50 minimum order. 90 day warranty on all products. Prices and availability are subject to change. Authorization required on all returns.

Books

Amplifiers	19-20
Hi-Fi	21
Software	21
Tube Data	18, 21

Capacitors

Auricaps	10
Axial Lead Electrolytic	9
CE Manufacturing	10
JJ Electronic	10
Metalized Polyester Tubular	9
Muscaps	10
Orange Drop	8
Silver Mica	10
Sprague Atom	9
Xicon	9

Chassis Hardware

Amp Handles	13
Castors & Sockets	13
Chassis Straps	13
Grill Cloth	12
Hammond Chassis Boxes	7
Jewels	13
Logos	13
Tilt Back Legs	13
Tolex	12
Tolex Adhesive	16

Chemicals

CAIG	16
Jif	16
Big Bath	16

Jacks

Cliff	11
Switchcraft	11

Knobs

Original Fender	12
Generic	12

Plugs

Switchcraft	11
-------------	----

Potentiometers

Alpha	12
CTS	12
Original Fender	12

Power Supplies

Fuse Holder	14
Power Cords	14

Reverb Parts

Right Angle RCA Cables	14
Reverb Tanks	7

Speakers

Bell Covers	4
Celestion	6
Grill Covers	13
Jensen	4-5
Recone Kits	5

Switches

Carling	11
Fender® Foot Switch Boxes	13
Marshall™ Foot Switch Boxes	13

Test Equipment

Audio Generator	17
Bias King	17
Digital Tube Tester	17
Oscilloscope	17
RF Signal Generator	17
Solder	16

Transformers

Hammond	14
One Electron	15

Tubes

JJ Electronic	1
Miscellaneous	3
Ruby	2
Sino	2
Svetlana	2
Valve Art	2

Tube Accessories

Tube Clip	3
Tube Retainer	3
Tube Sockets	3

Wire

Copper	11
Cloth Covered	11



Tube	1-24	25-49	50+
E34L	\$8.90	\$7.90	\$6.50
EL34	8.50	7.70	6.40
EL84/6BQ5	5.80	5.50	5.15
ECC99	11.50	10.20	8.95
KT88	30.70	27.30	23.95
KT88 Skyblue	32.95	29.50	27.95
6L6GC	11.95	10.50	8.90
12AT7/ECC81	7.30	6.50	5.70
12AU7/ECC82	5.60	5.20	4.85
12AX7-S/ECC83	5.60	5.20	4.85
12DW7/ECC832	7.50	7.00	6.25
300B	81.00	75.00	72.00
6922/E88CC	7.30	6.50	5.70
7027A	16.50	15.25	13.40

JJ tubes are hand made in the original

Tesla factory, located in the Slovak Republic.

This legendary tube factory has built many

OEM tubes under brand names such as

Telefunken, Siemens, Amperex, Mullard, and

Brimar. The Czech/Slovak heritage of

superior industrial craft continues with the new

line of **JJ tubes**. These new tubes have

received rave reviews and are known for their

high quality of raw materials, workmanship

and sound. All the **JJ tubes** we carry are the

most recent, improved versions of their type.



ROCKET FUEL



Tube	1-24	25-49	50+
EL34	\$10.75	\$10.25	\$9.85
KT88	34.30	33.50	32.45
6L6GC	11.25	10.95	9.45
6550C	19.10	18.75	18.10
12AX7	7.90	6.75	5.40

Svetlana tubes are back!

Glowing warmly in amplifiers around the world, Svetlana audio tubes command high praises from musicians and audiophiles alike.

Svetlana's superior construction and reliability has always made them the leader in Russian made tubes. As we know, the US stopped making tubes in the 1980's but Russia continued and is still developing vacuum tube technology.

There are a lot of Russian made tubes out there that are just second rate knock offs. But when you want REAL Russian made tubes, Svetlana is the only choice.

Their 6550C is the industry standard.

You can now rest assured that Svetlana is back and here to stay!

Here are just a few amplifier manufacturers that use Svetlana tubes:

Aguilar Amplification
AudioPrism
Demeter Amplification
Audio Research
Conrad Johnson
Convergent Audio
Manley Laboratories
Rogue Audio
Thor Audio
Vacuum Tube Logic
VHT Amplification



Super High Grade Made in China

Tube	1-24	25-49	50+
EL34B-STR	\$12.95	\$12.25	\$11.75
EL84-R	8.95	7.75	6.95
5AR4-C/GZ34	10.95	10.25	9.50
5U4G-C	10.95	10.25	9.50
6L6GC-STR	12.10	11.50	10.75
6V6GT-BC	9.95	8.30	7.95

Valve Art

Tube	1-24	25-49	50+
KT66	\$19.50	\$17.80	\$16.95
KT88	17.95	16.50	15.95
300B	56.00	51.00	49.95
845	25.95	24.50	23.95

Sino Tubes

Tube	1-24	25-49	50+
5AR4/GZ34	\$7.90	\$6.90	\$5.95
5U4G	7.60	7.10	6.20
6V6GT	6.25	5.50	4.50
12AT7	5.95	5.30	4.75
12AU7	5.95	5.25	4.75
12AX7A	7.10	6.10	5.25
12AX7 (Economy)	5.50	4.75	3.95
807	7.90	6.90	5.90
811A	8.90	7.90	7.25

Tube Matching

All power tubes may be matched for an extra \$1.00 per tube.

All tubes listed below are NOS, Mixed US brands unless otherwise noted.

Tube	Price	Tube	Price	Tube	Price
0A2	\$4.00	6C10	\$14.00	12AV7	\$5.30
0A3	5.40	6CA4/EZ81	10.90	12AX7A	13.25
0B2	5.10	6CA5/6EH5	3.30	12AY7	9.50
0C2	6.60	6CG7/6FQ7	11.60	12AZ7A	5.30
0C3-A/VR105	4.60	6DJ8/ECC88	8.80	12B4A	4.30
0D3-A/VR150	4.30	6DR7	5.30	12BH7A	18.95
2A3	91.00	6EU7	18.50	12BV7/12BY7A	10.70
5AQ5	5.40	6FH8	13.10	12DW7/7247	20.50
5AS4A/5U4GB	13.20	6GW8/ECL86	7.40	12FQ8	9.00
5R4GB	11.90	6J5	5.00	12SG7	5.00
5V6GT	2.90	6J7/EF36	4.80	12SH7	5.50
5Y3GT	9.50	6JE6C/6LQ6	47.30	12SJ7	3.30
6AG5	2.90	6K6GT	4.90	12SN7GT	3.60
6AL5/6EB5	3.00	6K11/6Q11	8.60	300B (Russia)	83.00
6AN8A	6.00	6KD8/6U8A	5.40	50C5	4.00
6AQ5A/6HG5	4.90	6KG6A/EL509	21.20	5749/6BA6W	3.30
6AQ8/ECC85	12.60	6L6GC	29.95	5751	10.30
6AS7G (Svetlana)	22.95	6N7	6.60	5879	9.50
6AS7GA	7.20	6SC7	6.50	5881/6L6WGB	26.25
6AU6A/EF94	4.80	6SF7	4.70	6080	8.60
6AX4GTB	3.60	6SJ7	4.20	6267/EF86	35.00
6AX5GT	4.70	6SK7	4.40	6267 (Russia)	17.90
6B4G	38.40	6SL7GT	7.70	6922 (Russia)	8.90
6BA6/EF93	4.40	6SN7GT-B (Full Base)	13.10	6922/E88CC (Jan)	9.40
6BC5/6CE5	3.40	6SN7GT (Russia)	6.50	6973	31.40
6BE6/EK90	3.90	6SQ7	4.40	7044	8.60
6BH6/E90F	4.00	6U10	6.10	7199	28.60
6BJ7	2.90	6V6GT	15.95	7591A	81.40
6BL8/6LN8	5.00	6X4/EZ90	5.00	807	15.30
6C4/EC90	4.80	6X5GT/EZ35	4.60	83	22.60
6C5	3.40	6Y6GT	3.80	8417	55.00

Tube Sockets



Tube Retainer Tube Clip



Tube	Description	1-24	25-49	50+
<i>Chassis Mount (ceramic unless otherwise noted)</i>				
P-ST8-800	8 pin octal with mounting bracket	\$1.45	\$1.05	\$0.85
P-ST8-801	8 pin octal with mounting bracket	1.45	1.05	.85
P-ST9-162	9 pin miniature (12AX7 type) w/Shield	1.49	1.19	1.05
P-SS9-325	Aluminum Shield	.55	.45	.37
P-ST9-511	9 pin miniature (socket with bracket)	1.10	1.05	.95
P-ST9-213	9 pin miniature plastic	.85	.72	.65
P-ST4-191	4 pin for 300B, 2A3 and 811	2.99	1.75	1.45
P-ST4-192	4 pin for 211 and 845	5.65	4.75	4.10
P-ST5-216	5 pin for 807	3.45	2.85	2.60
P-SG111	Ceramic cap for 807	1.85	1.10	.99
P-ST7-310	7 pin for 6C33C-B, 829B and 3E29	2.95	2.25	1.69
<i>PC Mount</i>				
P-ST8-193	8 pin octal	1.45	.85	.75
P-ST9-214	9 pin miniature	1.45	.85	.75

Part	Description	1-9	10+
S-H141	For use with suspended EL34 tubes	\$1.75	\$1.10
S-H143	For use with suspended 5881/6L6, KT88 tubes	1.75	1.10
S-H142	Grips tube base with "teeth," use with octal sockets 1 1/2" dia	1.55	1.10



The P Series uses the legendary AlNiCo type speaker magnet

P Series	Size	Ohms	RMS/Peak	Response	Voice Coil Diameter	1-9	10-24	25+
P8R-4	8"	4	25/50	80-8k	1"	\$45.00	\$42.75	\$40.50
The heart and soul of smaller vintage combos and studio amps, this is a great replacement for the Fender® Champ.								
P8R-8	8"	8	25/50	80-8k	1"	45.00	42.75	40.50
P10R	10"	8	25/50	80-6k	1"	47.90	45.50	43.15
This speaker has occupied the finest guitar amplifiers in the world. Very versatile for clean leads, punchy bass, and scorching rock sounds. Pure Vintage!								
P10R-16	10"	16	25/50	80-6k	1"	47.90	45.50	43.15
P12R	12"	8	25/50	60-8k	1"	52.50	49.90	47.25
A classic AlNiCo 12" speaker made for lower wattages. The P12R sings with bell like highs along with a warm, extended lower frequency range.								
P12N w/bell	12"	8	50/100	60-8k	1.5"	139.75	132.75	125.75
This classic AlNiCo magnet speaker was one of the original guitar amplifier speakers from as early as 1952.								
P12N-16 w/bell	12"	16	50/100	60-8k	1.5"	139.75	132.75	125.75
P12N-NB	12"	8	50/100	60-8k	1.5"	119.50	113.50	107.50
The "naked" version of the P12N, it doesn't have the bell cover over the magnet. A bell cover can be added later using the "N" size cover.								
P12N-NB-16	12"	16	50/100	60-8k	1.5"	119.50	113.50	107.50
P15N	15"	8	50/100	50-4k	1.5"	157.25	149.40	141.50
Some guitarists feel that a 15" speaker is the only way to get an instrument's true tone without compromise.								
P15N-16	15"	16	50/100	50-4k	1.5"	157.25	149.40	141.50

The J Series uses ceramic type speaker magnets

J Series	Size	Ohms	RMS/Peak	Response	Voice Coil Diameter	1-9	10-24	25+
J15/200	15"	8	200/400	50-4k	2"	78.75	74.75	70.75
Designed for PA and instrument applications, the J15/200 is the perfect 15" speaker for high wattage amplifiers and subwoofer cabinets.								
J15/200-16	15"	16	200/400	50-4k	2"	78.75	74.75	70.75



Bell Covers	Usage	1-9	10-24	25+
Bell-R	P8R, P10R, P12R	\$17.50	\$16.65	\$15.75
Bell-N	P12N, P15N	22.50	21.50	20.25



The C Series uses ceramic type speaker magnets



C Series	Size	Ohms	RMS/Peak	Response	Voice Coil Diameter	1-9	10-24	25+
C8R-4	8"	4	25/50	80-8k	1"	19.50	18.50	17.55
This speaker has an amazing range in a compact size. It is used most often for smaller studio and practice amps, however, the tone rivals speakers twice its size.								
C8R-8	8"	8	25/50	80-8k	1"	19.50	18.50	17.55
C10R	10"	8	25/50	80-6k	1.25"	21.50	20.50	19.35
A low wattage 10" speaker with a loud voice. The C10R can cut through the noise for scorching leads.								
C10Q	10"	8	35/70	80-6k	1.25"	25.50	24.25	22.95
One of Jensen's most popular models, this speaker features bell-like highs and a very smooth midrange. Versatile enough for anything from surf music to hard edge rock.								
C10Q-16	10"	16	35/70	80-6k	1.25"	25.50	24.25	22.95
C12R	12"	8	25/50	70-6k	1"	25.00	23.75	22.50
Vintage tone in a low wattage 12" speaker.								
C12Q	12"	8	35/70	70-6k	1.25"	31.00	29.45	27.90
Great character and power handling makes this speaker an excellent choice for amplifiers needing vintage tone.								
C12N	12"	8	50/100	70-7k	1.5"	44.50	42.25	40.00
The C12N is the definitive rock and roll speaker, used by almost every major amplifier manufacturer in the 1960's.								
C12N-16	12"	16	50/100	70-7k	1.5"	44.50	42.25	40.00
C12K	12"	8	100/200	70-7k	1.5"	60.00	57.00	54.00
This high wattage speaker has great highs and an extended midrange for versatility in both clean and overdriven settings.								
C15N	15"	8	50/100	50-4k	1.5"	64.50	61.25	58.00
A 15" speaker has wider range of tone reproduction. Smooth highs and deep lows.								
C15N-16	15"	16	50/100	50-4k	1.5"	64.50	61.25	58.00
C15K	15"	8	100/200	50-4k	2"	74.50	70.75	67.00
Jensen 15" ceramic magnet speakers have biting highs for lead and a throaty low end for overdriven chords. They are excellent as guitar amps or in Leslie speaker cabinets.								
C15K-16	15"	16	100/200	50-4k	2"	74.50	70.75	67.00

Recone Kits	Part #	1-3	4-9	10+
P10R	K-RC-P10R	\$55.10	\$52.35	\$49.50
C10R	K-RC-C10R	24.75	23.50	22.25
C10Q	K-RC-C10Q	29.35	27.85	26.40
C12N	K-RC-C12N	51.25	46.15	44.10

Original Jensen Speaker Recone Kits are made exclusively for older "Original" Jensen speakers (made prior to 1980) and contain genuine Jensen components.

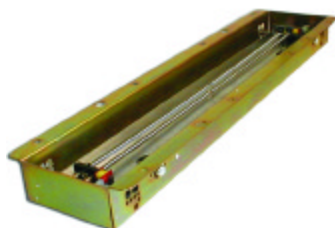


CELESTION



Model	Size	Ohms	RMS/Peak	Response	Voice Coil Diameter	1-4	5+
<i>General Guitar</i>							
G10L-35	10"	8	35/70	100-6k	1.25"	\$52.25	\$47.50
G12T-75	12"	8	75/150	75-5k	1.75"	79.75	72.50
This is the industry standard 12" loudspeaker, found in all recent 4x12 Marshall™ amplifiers.							
G12T-75-16	12"	16	75/150	75-5k	1.75"	79.75	72.50
<i>Specialist Guitar</i>							
Vintage 10	10"	8	60/120	80-5k	1.75"	63.25	57.50
This speaker is a smaller version of the world renowned Vintage 30, with it's classic warm tones and second to none capacity for sound.							
Vintage 10-16	10"	16	60/120	80-5k	1.75"	63.25	57.50
Vintage 30	12"	8	60/120	80-5k	1.75"	96.25	87.50
A great combo performer, this speaker thrives on high gain amps set to the max, for masses of volume and sustain, combined with tight and responsive single note definition.							
Vintage 30-16	12"	16	60/120	80-5k	1.75"	96.25	87.50
G12H	12"	8	30/60	75-5k	1.75"	101.75	92.50
With roots dating to the 1970's, the G12H has a tight, controlled bottom and a great midrange presence. Anniversary Edition.							
G12H-16	12"	16	30/60	75-5k	1.75"	101.75	92.50
G12M	12"	8	25/50	75-5k	1.75"	85.25	77.50
Greenback Warmth and woodiness are the essential characteristics of the Greenback's sound, with the ability to respond instantly to the most subtle dynamic changes.							
G12M-16	12"	16	25/50	75-5k	1.75"	85.25	77.50
G12M-70	12"	8	70/140	80-5k	1.5"	82.50	75.00
Modern Lead Greatest when pumping out hard rock or metal, this modern lead speaker is the standard replacement in all 4x12 Marshall™ amplifiers.							
G12M-70-16	12"	16	70/140	80-5k	1.5"	82.50	75.00
G12-80	12"	8	80/160	75-5k	1.75"	101.75	92.50
Classic Lead If you're looking for improved power handling and warmth, this classic lead speaker is what you want! Perfect replacement or upgrade for 4x12 Marshalls™.							
G12-80-16	12"	16	80/160	75-5k	1.75"	101.75	92.50
G12	12"	8	15/30	75-5k	1.75"	206.50	191.75
AlNiCo Blue Designed in the 50's, this speaker uses the original magnet to provide the tonal definition and dynamic range they are known for. Vox Bulldog speaker.							
G12-16	12"	16	15/30	75-5k	1.75"	206.50	191.75
AlNiCo Blue							





Accutronics®

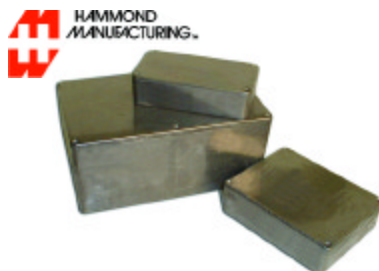
Reverb Tanks

Part	Input/Output	Delay	Used In:	1-9	10+
<i>Type 4 Long 2 Spring</i>					
P-R4AB3C1B	8/2250	Long	Fender®, Marshall™, Ampeg	\$17.85	\$16.75
P-R4BB2A1B	150/2250	Med.	Music Man	17.85	16.75
P-R4BB3C1B	150/2250	Long	SLM	17.85	16.75
P-R4EB2C1B	600/2250	Med.	Peavey Solid State	17.85	16.75
P-R4FB3A1B	1475/2250	Long	General Use	17.85	16.75
<i>Type 9 Long 3 Spring</i>					
P-R9AB2A1B	10/2575	Med.	Mesa Boogie, Fender®	19.35	18.25
P-R9AB3C1B	10/2575	Long	Fender®	19.35	18.25
P-R9FB2A1C	1928/2575	Med.	Fender®, Peavey, Music Man	19.35	18.25
<i>Type 8 Short 3 Spring</i>					
P-R8AB2A1B	10/2575	Med.	Mesa Boogie	16.35	15.25
P-R8BB2A1B	190/2575	Med.	SLM	16.35	15.25
P-R8DB2C1D	310/2575	Med.	Marshall™	16.35	15.25
P-R8EB2C1B	800/2575	Med.	Fender®, Marshall™, Peavey	16.35	15.25

See page 14 for RCA
Right Angle Reverb Cables

Diecast Aluminum Enclosures

- Countersunk lid with machine screws into drilled and tapped holes
- Lap joint construction provides protection from dust and water
- Vibra finished, no sharp edges



Part	Size	1-9	10+
P-H1590A	3.63" x 1.52" x 1.07"D	\$6.20	\$5.95
P-H1590B	4.38" x 2.4" x 1.07"D	6.95	5.95
P-H1590BB	4.7" x 3.7" x 1.18"D	8.45	7.45
P-H1590C	4.7" x 3.7" x 2.06"D	9.20	8.50
P-H1590D	7.39" x 4.72" x 2.06"D	14.65	13.75
P-H1590E	7.39" x 4.72" x 3.06"D	17.50	16.40
P-H1590F	7.41" x 7.41" x 2.5"D	23.95	22.50
P-H1590LB	1.98" x 1.84" x 1.07"D	6.35	5.95
P-H1590V	4.72" x 4.72" x 3.54"D	19.75	18.75

Aluminum Chassis Boxes

Note: Dimensions shown are exterior dimensions

Part	Thickness	Size	Price	Cover	Price
P-H1444-8	.04"	6" x 4" x 2"	\$7.10	P-H1434-8	\$3.60
P-H1444-12	.04"	7" x 5" x 2"	7.80	P-H1434-12	3.45
P-H1444-16	.04"	10" x 6" x 2"	10.25	P-H1434-16	5.35
P-H1444-18	.04"	13.5" x 5" x 2"	10.95	P-H1434-18	5.85
P-H1444-22	.051"	12" x 8" x 2"	17.95	P-H1434-22	7.95
P-H1444-32	.051"	17" x 10" x 3"	24.50	P-H1434-30	8.10

20 Gauge Steel Chassis Boxes

Note: Dimensions shown are exterior dimensions

Part	Size	Price	Cover	Price
P-H1441-8	6" x 4" x 2"	\$7.70	P-H1431-8	\$4.10
P-H1441-12	7" x 5" x 2"	8.40	P-H1431-12	3.95
P-H1441-16	10" x 6" x 2"	10.90	P-H1431-16	5.85
P-H1441-18	13.5" x 5" x 2"	11.95	P-H1431-18	6.15
P-H1441-22	12" x 8" x 2"	19.40	P-H1431-22	8.20
P-H1441-32	17" x 10" x 3"	25.50	P-H1431-30	8.75

20 Gauge Steel Cages

Note: Dimensions shown are exterior dimensions

Part	Size	Price
P-H1451-16	10" x 6" x 5.2"	\$27.30
P-H1451-22	12" x 8" x 5.2"	31.25
P-H1451-30	17" x 10" x 5.2"	37.75

**Type 715P**

Polypropylene Film
Radial Leads
± 5% tolerance
Rated for 85° C Operation

**Type 716P**

These are a high performance version of the popular 715P series. They are made from **polypropylene film and foil with pure copper leads**, making them ideal for high pulse current applications.
± 10% tolerance
Straight radial leads with 1/2" spacing, minimum 1/2" length.

**Type PS**

Polyester Film
Radial Leads
600v, ± 10% tolerance



Part	Capacity@Volts	1-9	10-49	50+
C-RD001-600	.001 @600	\$0.45	\$0.37	\$0.31
C-RD0022-600	.0022 @600	.45	.37	.31
C-RD0033-600	.0033 @600	.45	.37	.34
C-RD0047-600	.0047 @600	.45	.38	.33
C-RD0056-600	.0056 @600	.45	.39	.34
C-RD01-600	.01 @600	.55	.45	.37
C-RD015-600	.015 @600	.60	.48	.38
C-RD022-600	.022 @600	.66	.52	.44
C-RD033-600	.033 @600	.71	.60	.47
C-RD047-600	.047 @600	.78	.62	.48
C-RD1-600	.1 @600	.99	.81	.75
C-RD22-600	.22 @600	1.80	1.25	1.05
C-RD47-400	.47 @400	1.72	1.31	1.10

Part	Capacity@Volts	1-9	10-49	50+
C-PD001-600	.001 @600	\$0.63	\$0.54	\$0.42
C-PD0022-600	.0022 @600	.65	.56	.44
C-PD0033-600	.0033 @600	.65	.56	.44
C-PD0047-600	.0047 @600	.67	.57	.45
C-PD0056-600	.0056 @600	.69	.62	.59
C-PD01-600	.01 @600	.71	.62	.51
C-PD015-600	.015 @600	.72	.63	.52
C-PD022-600	.022 @600	.99	.88	.75
C-PD033-600	.033 @600	1.02	.94	.77
C-PD047-600	.047 @600	1.12	1.04	.91
C-PD1-600	.1 @600	1.70	1.30	1.10
C-PD22-600	.22 @600	1.90	1.60	1.25
C-PD47-400	.47 @400	2.05	1.64	1.45

Part	Capacity@Volts	1-9	10-49	50+
C-SD0012-600	.0012 @600	\$0.56	\$0.47	\$0.34
C-SD002-600	.002 @600	.56	.47	.34
C-SD0033-600	.0033 @600	.56	.47	.34
C-SD005-600	.005 @600	.59	.49	.38
C-SD01-600	.01 @600	.63	.53	.41
C-SD015-600	.015 @600	.72	.60	.52
C-SD02-600	.02 @600	.79	.65	.55
C-SD033-600	.033 @600	1.09	.91	.81
C-SD05-600	.05 @600	1.20	.99	.83
C-SD1-600	.1 @600	1.28	1.07	.91
C-SD22-600	.22 @600	1.80	1.40	1.35

Orange Drop Capacitor Kit

Part	Price
C-RS1	\$47.95

Contains 6 of each of the following values in the Type PS (600V, polyester) and Type 715P (600V, polypropylene), 72 pieces total. Save over purchasing individually, and you get a sturdy plastic organizer.

Values:

.0033, .0056, .01, .022, .047, .1μF

Sprague AtomThe Best Electrolytic
Money can Buy!

Part	Capacity@Volts	1-24	25-49	50+
C-SA25-25	25@25	\$0.82	\$0.76	\$0.72
C-SA250-25	250@25	1.20	1.15	1.10
C-SA25-50	25@50	.89	.79	.74
C-SA50-50	50@50	.90	.85	.75
C-SA100-100	100@100	1.72	1.60	1.28
C-SA8-150	8@150	1.45	1.25	.97
C-SA10-150	10@150	1.19	1.07	.85
C-SA100-350	100@350	4.40	3.55	3.28
C-SA8-450	8@450	2.30	1.85	1.75
C-SA80-450	80@450	4.75	3.80	3.60
C-SA100-450	100@450	6.45	5.90	4.40
C-SA16-475	16@475	3.55	2.95	2.30
C-SA10-500	10@500	3.05	2.65	2.40
C-SA20-500	20@500	3.45	2.80	2.45
C-SA40-500	40@500	4.98	3.70	3.15
C-SA20-600	20@600	6.65	6.20	5.75

Axial LeadFresh stock, low leakage
tubular electrolytic capacitors.
Rated for 85°C operation.
Tolerance -20%, + 50%.

Part	Capacity@Volts	1-24	25-49	50+
C-ET47-50	47@50	\$0.39	\$0.28	\$0.21
C-ET100-160	100@160	1.25	1.15	1.05
C-ET100-350	100@350	2.50	2.10	1.95
C-ET10-450	10@450	.99	.72	.69
C-ET47-450	47@450	2.10	1.40	1.60
C-ET100-450	100@450	3.99	3.25	2.99
C-ET22-500	22@500	2.25	1.95	1.75

Great small polypropylene
coupling capacitors.
Radial Lead

Part	Capacity@Volts	1-24	25-49	50+
C-XPD001-630	.001@630	\$0.29	\$0.24	\$0.19
C-XPD0022-630	.0022@630	.29	.24	.19
C-XPD0047-630	.0047@630	.29	.24	.19
C-XPD01-630	.01@630	.29	.24	.19
C-XPD022-630	.022@630	.35	.26	.21
C-XPD047-630	.047@630	.42	.36	.29
C-XPD1-630	.1@630	.46	.40	.33
C-XPD22-630	.22@630	.63	.55	.44
C-XPD47-630	.47@630	1.20	.99	.87

Part	Capacity@Volts	1-24	25+
C-TD001-630	.001@630	\$0.44	\$0.38
C-TD0022-630	.0022@630	.44	.39
C-TD0033-630	.0033@630	.44	.40
C-TD0047-630	.0047@630	.44	.40
C-TD01-630	.01@630	.51	.45
C-TD022-630	.022@630	.51	.45
C-TD033-630	.033@630	.51	.45
C-TD047-630	.047@630	.51	.45
C-TD1-630	.1@630	.73	.69
C-TD22-630	.22@630	.75	.68
C-TD47-630	.47@630	.78	.71

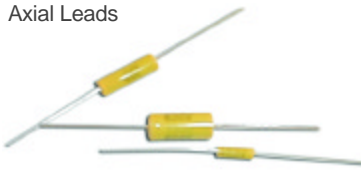
**Metalized
Polyester Tubular**

±10% tolerance

Non-inductive

Self healing windings

Axial Leads





Made in the USA, to
the same specs as the
Original Mallory,
on Mallory's original
machinery



Same Diameter as LCR
Great for use in
Marshall™ amplifiers

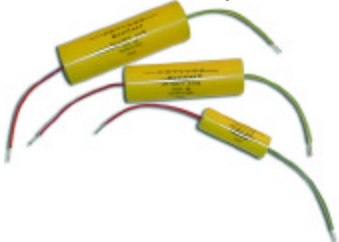


High Resolution Capacitors
Sonically Transparent
Used by Airtight, Bottlehead
and Rowe!



MusiCAP by HOVLAND

- MusiCaps deliver exceptional dynamics, speed, focus, correct timbre and depth of field, and true inter-transient silence.
- Separate layers of polypropylene film & conductive foil deliver superior clarity of reproduction.
- 1000V Teflon insulation on 22 gauge leads.
- Tight $\pm 5\%$ tolerances. Manufactured entirely in USA.



Silver Mica

500 volt, 5% tolerance
Dipped epoxy coating



Part	Capacity@Volts	1-9	10-24	25+
C-EC20X4-475	20/20/20/20@475	\$21.50	\$19.50	\$17.50
S-H120	1 1/8" dia. can insulator	1.00	-	-
S-H120M	1 1/8" dia. can metal plate	1.25	-	-

Part	Capacity@Volts	1-9	10-24	25+
C-EC32-32-500	32/32 @ 500	\$6.40	\$5.70	\$5.00
C-EC50-50-500	50/50 @ 500	6.75	6.00	5.28
S-H122 (clamp for above)	1 1/8" dia.	1.45	1.25	1.05

Part	Capacity@Volts	Price	Part	Capacity@Volts	Price
C-AUD1-450	.1 μ F @450	\$6.25	C-AU1-450	1 μ F @450	\$10.55
C-AUD22-450	.22 μ F @450	7.55	C-AUD01-600	.01 μ F @600	5.95
C-AUD33-450	.33 μ F @450	7.95	C-AUD022-600	.022 μ F @600	6.30
C-AUD47-450	.47 μ F @450	8.65	C-AUD047-600	.047 μ F @600	7.00
C-AUD68-450	.68 μ F @450	9.35	C-AU1-600	1 μ F @600	24.95

Part	Capacity@Volts	(Dia. x Length)	1-9	10+
C-H3-200	3.0 μ F @200	.92" x 2.88"	\$22.30	\$19.50
C-HD1-400	.1 μ F @400	.41" x 1.28"	7.79	6.60
C-HD22-400	.22 μ F @400	.55" x 1.50"	9.95	7.95
C-HD47-400	.47 μ F @400	.59" x 2.00"	11.10	9.95
C-HD68-400	.68 μ F @400	.76" x 2.00"	14.60	11.95
C-H1-400	1.0 μ F @400	.78" x 2.50"	18.45	15.95
C-H2-400	2.0 μ F @400	.98" x 3.00"	22.50	19.95
C-HD1-600	.1 μ F @600	.50" x 1.75"	9.25	7.95
C-HD22-600	.22 μ F @600	.62" x 2.00"	11.95	10.95
C-HD33-600	.33 μ F @600	.57" x 2.25"	14.95	12.95
C-HD47-600	.47 μ F @600	.80" x 2.50"	18.40	14.95
C-HD022-1000	.022 μ F @1000	.44" x 1.25"	7.85	6.95
C-HD047-1000	.047 μ F @1000	.54" x 1.75"	9.90	8.95
C-HD01-1600	.01 μ F @1600	.39" x 1.17"	7.95	6.75

Part	Value(pF)	1-49	50+	Part	Value(pF)	1-49	50+
C-SM22	22	\$0.21	\$0.17	C-SM250	250	\$0.48	\$0.42
C-SM47	47	.33	.25	C-SM300	300	.44	.31
C-SM68	68	.32	.25	C-SM360	360	.54	.49
C-SM82	82	.39	.23	C-SM390	390	.61	.52
C-SM100	100	.31	.26	C-SM500	500	.61	.54
C-SM150	150	.33	.29	C-SM1000	1000	.76	.69
C-SM220	220	.48	.39				

Copper Wire

22 Gauge, 600 Volt stranded
tinned hook-up wire. Copper wire,
UL style 1015, rated to 105° C.
Sold in 50' spools.

Cloth Covered Wire

#20 stranded copper wire covered
with lacquered cotton braid.
Available in 8 colors on 50' spools.
Closely resembles the original
wire used in early guitar amps.
600 volt, UL style 1015
rated to 105° C

Cliff Jacks

Highest Quality
Made in England



S-H501 S-H502 S-H503 S-H504 S-H505

Part	Color	Price	Part	Color	Price
S-W22B	Black	\$2.95	S-W22G	Green	\$2.95
S-W22R	Red	2.95	S-W22Y	Yellow	2.95
S-W22W	White	2.95	S-W22O	Orange	2.95

Part	Color	Price	Part	Color	Price
S-W703	Orange	\$7.25	S-W707	Green	\$7.25
S-W704	Black	7.25	S-W708	Yellow	7.25
S-W705	Red	7.25	S-W709	White	7.25
S-W706	Blue	7.25	S-W710	Brown	7.25

Part	1-24	25+
S-H501 Mono input jack. 4 solder terminals, switched. Metal ferrule, vintage style. Used in British amps	\$1.39	\$1.10
S-H502 Mono input jack. 4 solder terminals, switched. Used in modern Marshall™ amps with black plastic nut	1.09	.60
S-H503 Mono input jack. 4 PC board terminals, switched. Used in modern Marshall™ amps, or as replacement part for Marshall™ JCM 900 cabinets. Used in Ampeg, Crate, Marshall™ & more	1.09	.60
S-H504 Stereo input jack. 6 PC board terminals, switched. Used in modern Marshall™ amps. Used in many PA & Recording consoles, Marshall™ bass heads, & "rack" units	1.15	.80
S-H505 Same as S-H504 but with 6 solder lugs	1.35	.99

Switches

Part	1-24	25+
P-H490 Black standby rocker switch for Marshall™ JCM series and others	\$2.75	\$2.35
P-H491 Lighted power switch. Used for Marshall™ JCM series and others	4.10	3.50
P-H495 Carling SPST toggle power and standby switch. Good Fender® replacement	2.65	2.25
P-H494 Carling SPDT 2 position toggle. Great Fender® ground switch replacement	3.25	2.80
P-H496 Carling SPDT 3 position center off toggle. Great Fender® ground switch replacement	2.70	2.20
P-H493 Carling SPST footswitch. Used in Fender®, etc. reverb/tremolo/channel switching pedals	3.90	3.50
P-H497 Carling DPDT footswitch, used in switching and effects units	7.10	6.60
P-H498 DPDT footswitch, same switch as P-H497 but made in Taiwan	3.95	2.40



P-H497 P-H493 P-H498 P-H494 P-H491

Switchcraft®
Consistently Excellent Since 1946™



Part	1-24	25+
Jacks		
W-SC-11 1/4" Female. Open circuit. Replacement for Fender®	\$1.38	\$1.29
W-SC-12A 1/4" female. Shorting type	1.40	1.25
W-SC-12B 1/4" female. Stereo Double Open Circuit	1.60	1.30
W-SC-L12A 1/4" female Same as W-SC-12A but has longer leads	1.50	1.27
W-SC-3501FR RCA panel mount female jack. Good Fender® replacement	1.60	1.30

Part	1-24	25+
Plugs		
W-SC-3502A RCA Plug. For Fender®	\$1.75	\$1.35
W-SC-228 1/4" right angle plug. For Fender®	2.80	2.65

Alpha Pots

Full Size: 1" dia
Diameter: 1/4" dia x 5/8" length
Solid Shaft
Works great in European
amps like Marshall™

**CTS Pots**

1/2 watt, 3/8" mounting, 1/4" splined
shaft for set screw or push
on. For most US made
amps like Fender®.

**Original Fender®
CTS Pots**

Replacement parts in original
Fender® packaging
While Supplies Last

**Grill Cloth**

Replacement grill cloth as found
on Fender® and other vintage
amps. Cloth is 34" high. Order
enough to cover the width of your
cabinet plus room for frayed
edges. *Prices are by the yard*

See page 16 for
Spray-on Adhesive for Tolex

Tolex Cabinet Covering

Replacement cabinet covering
for Fender® and other popular
guitar amps. Tolex is 54" wide
Tweed is 64" wide
Original Fender® is 36" wide
Prices are by the yard

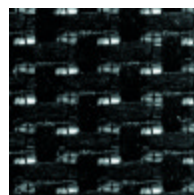
Knobs

Original Fender®

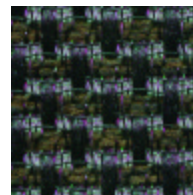
Part	Value	1-9	10-24	25+
R-VA5KL	5k lin	\$0.95	\$0.80	\$0.70
R-VA500KA	500k log	.95	.80	.70
R-VA10KL	10k lin	.95	.80	.70
R-VA1MA	1meg log	.95	.80	.70
R-VA100KL	100k lin	.95	.80	.70
R-VA250KL	250k lin	.95	.80	.70
R-VA2X100KL	Dual 100k lin	2.40	1.95	1.75
R-VA2X1MA	Dual 1meg log	2.40	1.95	1.75

Part	Value	1-9	10-24	25+
R-VC250KA	250k log	\$2.50	\$1.75	\$1.29
R-VC500KA	500k log	2.55	1.81	1.39
R-VC1MA	1 meg log	2.50	1.75	1.29

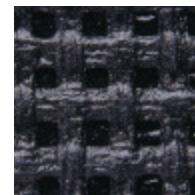
Part	Value	Price
R-VCTS-5K-A	5k log	\$3.95
R-VCTS-5K-L	5k lin	3.95
R-VCTS-10K-A	10k log	3.95
R-VCTS-25K-L	25k lin	3.95
R-VCTS-50K-RA	50k reverse log	3.95
R-VCTS-500K-A	500k log	3.95
R-VCTS-3M-RA	3M reverse log	3.95



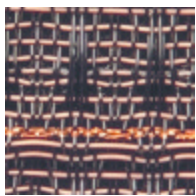
S-G296 \$10.95
Black Basket



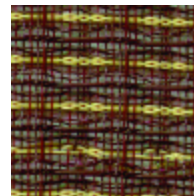
S-G297 \$10.95
Brown Basket



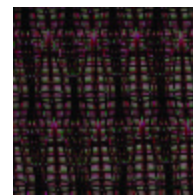
S-G299 \$12.95
Black Waffle



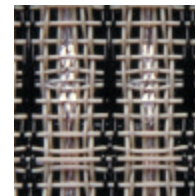
S-G300 \$15.95
Black/Gold



S-G301 \$12.95
Oxblood/Yellow



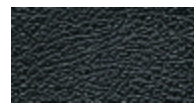
S-G302 \$12.95
Oxblood



S-G303 \$10.95
Black/Silver/Gray



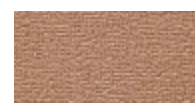
S-G305 \$24.95
Tweed



S-G306 \$9.45
Black



S-G307 \$19.95
Cream Original Fender®



S-G308 \$19.95
Brown Original Fender®

Part	Description	Price	Part	Description	Price
P-K314	Skirted, for Blackface® amps pkg of 6	\$12.95	P-K317	Skirted, for Supertwin or PA each	\$3.25
P-K315	White Vintage pkg of 6	12.50	P-K318	Chicken Head pkg of 6	8.60
P-K316	Brown Vintage pkg of 6	12.50	P-K307	Generic version of P-K318 Sold separate	.75

Jewels

Replacement for Fender®



Part	Description	1-9	10+	Part	Description	1-9	10+
P-L115	Red	\$1.85	\$1.10	P-L121	Purple	\$1.85	1.10
P-L116	Green	1.85	1.10	P-L122	Clear	1.85	1.10
P-L117	Amber	1.85	1.10	P-L123	White	1.85	1.10
P-L120	Blue	1.85	1.10	P-L124	Pilot Lamp Holder	1.85	1.10

Fender® Chassis Straps

Authentic Fender®
Package of 2


Part	Description	Price
P-H264S	Small, 3"	\$6.25
P-H264M	Medium, 4"	6.25
P-H264L	Large, 5"	6.50

Fender® Tilt Back Legs

Original Fender®
Package of 2


Part	Description	Price
P-H265S	Small, 14"	\$21.95
P-H265M	Medium, 16"	26.95
P-H265L	Large, 19"	32.50

Foot Switch Boxes

Replacement for Marshal™
Original Fender®


Part	1-9	10+	Part	Price
P-H470	\$11.75	\$9.75	P-H270	\$25.95
Marshall™ One Button, with 1/4" plug			Fender® One Button, vintage style with RCA plug	
P-H471	13.45	10.95	P-H271	38.95
Marshall™ Two Button, with 1/4" plugs			Fender® Two Button, vintage style with RCA plugs	

Fender® Logos

Original Fender®



Part	Description	Price
S-M911	Flat Brown	\$11.25
S-M916	Flat Black	11.25
S-M913	Tweed Brown	9.50
S-M917	Tweed Black	9.50
S-M912	Blackface with Tail	11.25
S-M915	70's Small Logo (CBS)	9.95
S-M914	Tweed Bassman®	9.95

Fender® Amp Handles

Replacement for most US amps,
like Fender®


Part	Description	1-9	10+
P-H260	Brown Strap with Caps 8 3/4"	\$2.50	\$2.10
P-H261	Black Strap with Silver Caps 8 3/4"	2.50	2.10
P-H261B	Black Strap with Black Caps 8 3/4"	2.50	2.10

Speaker Grills

Flat Black



Part	Size	Price	Part	Size	Price
P-HSG008	8"	\$1.95	P-HSG012	12"	\$2.75
P-HSG010	10"	3.25	P-HSG015	15"	3.10
			P-HSGA1	Bracket	.35 ea

Castors & Sockets

Replacement for Fender®,
Sunn and other US amps


Part	Description	Price
P-HW01S	Castor & Socket	\$3.95
P-HW02	Castor Only	2.95
P-HW03	Socket Only	1.95

1600 Series Push-Pull Transformers



Part	Watts	Primary Imp. (ohms)	Mounting Centers	Weight	Price
P-T1650F	25	7600 CT	2.44" x 2.0"	4.0 lbs	\$42.55
P-T1650N	60	4300 CT	2.94" x 2.5"	8.0 lbs	61.50
P-T1650P	60	6600 CT	2.94" x 2.5"	8.0 lbs	61.50
P-T1650T	120	1900 CT	3.31" x 3.0"	14.0 lbs	74.15

Enclosed (shielded), 4 slot, above chassis Type "X" mounting. Frequency response 30Hz to kHz at full rated power (+/-1 db max. ref. 1 kHz) minimum. All units have secondary impedance of 4/8/16 ohms. Flexible 8" leads. Vertical mounting centers.

Power Transformers



Part	Rating	Mounting Centers	Weight	Price
P-T272JX	300-0-300v, 250MA 5VCT, 4A 6.3VCT, 8A	2.81" x 3.0"	7.6 lbs	\$52.05
P-T278X	400-0-400V, 200MA 5VCT, 3A 6.3VCT, 6A	2.69" x 2.5"	7.0 lbs	60.45
P-T282X	500-0-500V, 200MA 5VCT, 3A 6.3VCT, 6A	3.31" x 3.0"	9.6 lbs	65.80

117 Volt primary, 50/60 Hz. Provided with color-coded leads.

Filament Transformers



Part	Rating	Mounting Center	Weight	Price
P-T166L5	5.0VCT, 2A	2.375	0.7 lbs	\$11.30
P-T166L6	6.3VCT, 2A	2.375	0.8 lbs	11.30
P-T166N6	6.3VCT, 4A	2.8125	1.1 lbs	11.95
P-T166N12	12.6VCT, 4A	3.125	0.8 lbs	14.70

115V Primary, 50/60 Hz. U-bracket mounting.

Fuse Holder



Part	Description	1-9	10-24	25+
S-H200	Marshall™ Style	\$2.70	\$2.25	\$2.10
S-H201	Fender® Style	1.38	1.10	.99

Power Cords



Part	1-9	10-24	25+
S-W123 3 prong, 8' with IEC female end SVT (Marshall™ Type) 18 awg	\$2.60	\$2.10	\$1.90
S-W124 3 prong, 12' with IEC female end SVT (XL Marshall™ Type) 18 awg	4.25	3.10	2.25
S-W125 3 prong, 8' bare end type SJT (Replaces most US made amps) 16 awg	2.10	1.99	1.85
S-W126 3 prong, 12' bare end type SJT (same as above, but longer) 16 awg	3.95	3.10	2.50

Right Angle RCA Cables

For Reverb Tanks (page 7)
and other electronic devices

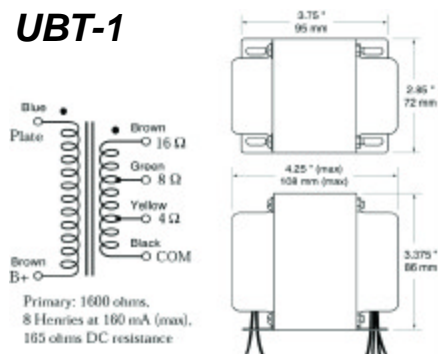


Part	Description	1-9	10-24	25+
S-H273	3 foot cable	\$1.50	\$1.25	\$1.15
S-H276	6 foot cable	1.70	1.40	1.25

one electron Single Ended Output & Power Transformers

All Designs By John Atwood. Manufactured in the United States
For Complete Specs, Visit www.one-electron.com/trans.html

UBT-1



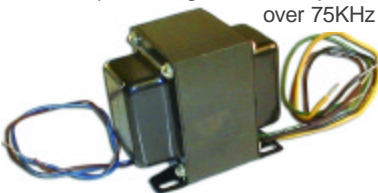
Part

P-TUBT-1

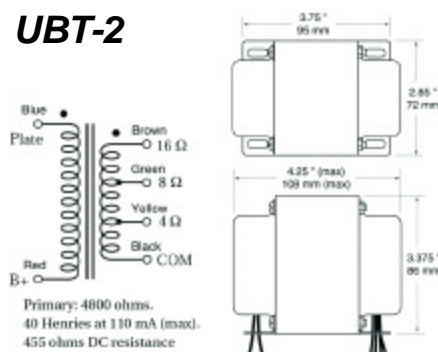
Price

\$79.95

The UBT-1 is a low-impedance single-ended transformer intended for parallel combinations of tubes running at B+ voltages for 250 to 325 volts, such as: two or three EL34s (triode-connected), three 2A3s, two 300Bs, two 6AS7s etc., as well as single sweep tubes run in "enhanced-triode" mode, resulting in 10 to 15 watts of output power. The UBT-1s low impedance gives an exceptionally broad frequency range of 10Hz to over 75KHz (at 1 watt). This transformer has been the basis for excellent-sounding single-ended amps, and is notable for it's clean, detailed sound. 6.1 lbs



UBT-2



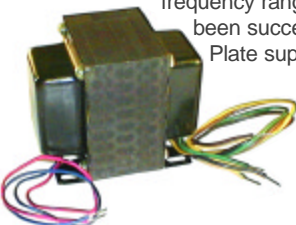
Part

P-TUBT-2

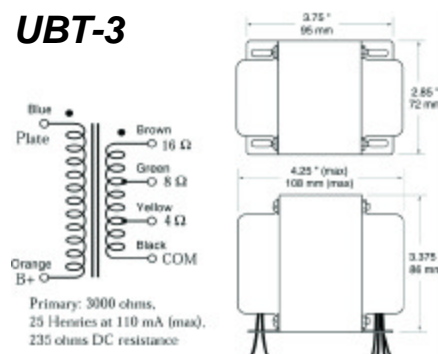
Price

\$99.95

The UBT-2 is the same size and power (15 watts) as the UBT-1, but has a higher primary impedance suitable for single tubes running at B+ voltages of 400 to 500 volts, such as: 50, WE 300B, 811-3, 572-3, etc. The trade-off of a higher impedance transformer is worse bandwidth, but additional interleaving was added in the UBT-2 to extend the frequency range from 10Hz to over 55KHz (at 1 watt). The UBT-2 has also been successfully used as a choke load for shunt-feed output stages. Plate supply voltages over 600 volts are not recommended. 6.0 lbs



UBT-3



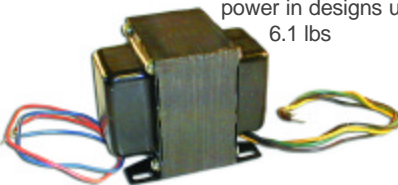
Part

P-TUBT-3

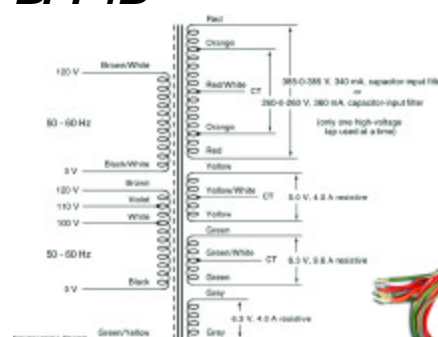
Price

\$99.95

The UBT-3 is the same size and power (15 watts) as the UBT-1 but has a primary impedance suitable for single or paralleled tubes running at B+ voltages of 300 to 400, such as: 2A3, WE 300B, 50 etc. The frequency response is from 10Hz to over 60KHz (at 1 watt). The 3K primary impedance offers lower distortion at only slightly less power in designs using the commonly-specified 2.5K transformers. 6.1 lbs



BFT-1B



Part

P-TBFT-1B

Price

\$139.00

The BFT-1B was designed to power a stereo amplifier using UBT-1s in each channel but will also power an 80 watt push-pull tube amplifier. The BFT-1B is slightly larger than earlier versions of the BFT-1, allowing lower flux density and cooler operation. The tapped high-voltage windings and three filament windings provide flexibility in design. An electrostatic shield between the primaries and secondaries reduces power-line noise coupling. The primary arrangements allows use on virtually any power grid in the world. Overall dimensions: 4.5" x 3.75" x 5.875" (11.4 x 9.5 x 14.9 cm) 16 lbs





Jif Action



Big Bath



Tolex Adhesive

3M Spray adhesive is ideal for bonding Tolex or any other cloth, foil etc. to plastics, painted or unpainted wood and many other materials.



Solder

Kester 44 Solder



Part	1-11	12+
S-CD5S-6 DeoxIT™ D5 - Dissolves oxides and sulfides that form on metal contact surfaces. Most popular cleaner/deoxidizer available. 5 oz (200ml)	\$7.95	\$7.50
S-CD100P DeoxIT™ D5 Pen Applicator	10.95	10.50
S-CR5PS-6 R5™ Power Booster - Unique liquid that improves the flow of electricity on metal surfaces. 5 oz (200ml)	18.45	17.50
S-CP5S-6 PreservIT™ - Seals, lubricates and preserves metal surfaces against oxidation and contamination. 5 oz (200ml)	7.95	7.50
S-CRBR100L-2 CaiKleen™ - Rubber cleaner and rejuvenator. Ideal for computers, printers and other office or industrial equipment. 59ml squeeze bottle	7.45	6.95
S-CRBR100L-25C CaiKleen™ - Rubber cleaner and rejuvenator. 25ml precision dispenser	8.95	7.50
S-CMCL CaiLube™ - Precision lubricant for moving contact surfaces (faders, switches, pots etc.) 5 oz (200ml)	8.95	7.75
S-CG5S-6 ProGold™ G5 Spray - Improves conductivity and provides long-lasting protection on gold and other precious metals. 5 oz (200ml)	13.25	12.60
S-CG100P ProGold™ Pen Applicator	16.50	14.95
S-CGX5S-6 ProGold™ GXL - Extended temperature, longer lasting formula. 5 oz (225ml)	24.95	21.95
S-CFZ7PS-10 FreezeALL™ - Cools circuits to -54 C, locates intermittent components and provides low temp testing. 200ml spray	10.95	9.50
S-CCW100P CircuitWriter™ - Precision conductive ink dispenser makes instant traces on most surfaces. 7ml pen dispenser	11.75	9.95
S-CSWP-6 Foam Swabs - 100% lint free open cell urethane foam. Retains lubricant and solvent for light applications. 6 pack	4.50	3.95
S-CAB-6 Cleaning Brushes - Nylon brush for cleaning contacts, connectors, and tube pin sockets. 6 pack	4.75	4.10

Part	Price
S-C19-634 Cleans and provides protection for electronic controls, switches, relays, pots, and other components. Contains silicone additive. 6 oz	\$3.95
S-C19-636 Cleans and provides protection for electronic controls, switches, relays, pots, and other components. Contains silicone additive. 16 oz	6.95

Part	Price
S-C19-902 All purpose degreaser and cleaner for electrical contacts, switches, pc boards and components. 12 oz	\$7.95
S-C19-903 All purpose degreaser and cleaner for electrical contacts, switches, pc boards and components. 22 oz	11.95

Part	Price
S-F315	\$10.95

Part	Price
S-T9000 60/40 rosin core .050" diameter in 1lb spool	\$12.95

Oscilloscope**Audio Generator****RF Signal Generator****Signal Tracer/Injector****Bias King™****Maxi-Matcher
Digital Tube Tester****Part****S-MOS7010B****Price**

\$329.00

Model OS-701 OB is a compact general purpose oscilloscope with wideband, DC to 10 MHz, and high vertical input sensitivity 10 mV/cm characteristics. The time base sweep rate is designed between 1 μ s/cm to 1 ms/cm. Built in fine controller for easier operation. Automatic TRIG control.

Part**S-MAFGEN****Price**

\$149.95

- High frequency stability: within +2Hz
- Frequency range - 10Hz ~ 1MHz, 5 decade bands
- Accuracy - 10Hz ~ 1MHz - $\pm 5\%$ + 2Hz
- Output control - 0dB/-20dB/-40dB and fine adjuster 100Hz ~ 100KHz $\pm 3\%$ + 3Hz
- Output Voltage Floating: within +1.5dB

Part**S-MRFGEN****Price**

\$159.95

- Wide frequency range: 100KHz to 150MHz
- With 1 KHz oscillator purpose of modulation
- High Stability
- Output Control: 0dB/-20dB/-40dB and fine adjuster
- Frequency accuracy: $\pm 5\%$
- RF output : 100mV rms approx: (up to 35MHz unloaded)
- Output control: High-low switch, fine adjust
- Audio output: 1KHz min, 2Vrms
- Modulation: Internal - 1KHz (AM) 30% approx. External - 50Hz ~ 20KHz at <1V rms input

Part**S-MSIGTR****Price**

\$139.95

Features: Tracer Portion

- Gain - Max. 60dB at 1KHz
- Attenuation: 0-20-40-60 dB
- Input impedance: 100k ohms
- RF output: 100mV rms appx (up to 35MHz unloaded)
- Output impedance: Output - 600 ohms (unbalanced) - External speaker - 8 ohms

Features: Injector Beam

- Frequency: appx. 1KHz square wave form
- Output lever: 4.5V p-p max., 0-4.5 continuously variable

Part**S-TBKING****Price**

\$115.00

BIAS KING™ features one tube socket enabling you to check the bias of your tubes one tube at a time.

S-TBKINGPRO

175.00

BIAS KING Pro™ Two sockets allow you to switch between two tube readouts without having to unplug tubes.

As tubes age, their bias point will shift. By using the BIAS KING™ you can maintain the sound you want by periodically adjusting the bias on your amp.

Part**S-Z240****Price**

\$495.00

- Standard tube types testable: 6L6, 5881, EL34, 6V6, 6550, 6CA7, 7581, KT66, KT77, KT88, KT90, KT100
- Plate Voltage: Selectable 325 & 400
- Bias Voltages: -60, -48, -36, -24, -12
- Filament Voltage: Amps 6.3 VAC 6 A
- AC input: 120 vac, 75 watts maximum input power

Measurement Types:

- Plate Current (Ip) Range: 0 > 199.9 mA DC $\pm 1.5\%$
- Transconductance (Gm) Range: 0 > 19.99 deci-Mhos, $\pm 1.5\%$
- Test Frequency: 1 KHz
- Short Circuit Test: Any inter-electrode shorts up to 1MEG Ohm, indicated by LEDs
- Dimensions/Weight: 8.5" x 12.5" x 2.5" / 11 lbs.

Part	1-9	10+
------	-----	-----



75 Years of Western Electric Tube Manufacturing

By Bernard Magers

A Log Book history of over 750 WE tubes. A comprehensive listing of all WE tubes manufactured during their 75 year history. Includes dates of manufacture, description, equipment used in, materials, a summary of tube parameters and manufacture discontinued date. Also covers early history of the Western Electric Co. and their tube activity. Contains hundreds of tube illustrations. Written by a former Western Electric Senior Engineer.

144 pages, 1.0 lb

B-634

\$16.95 \$12.95



1937 Sylvania Tube Manual

Re-print of 1937 tube manual has pin out diagrams and specifications on tubes manufactured by Sylvania in 1937. Tube types range from 01A and X99 to 6K7. Includes 10 pages of general tube information as well a section of typical radio receiver and amplifier circuits of the day.

183 pages, 0.7 lb

B-764

\$11.95 \$9.95



Electron Tube Resume

By George H. Fathauer

An abridged version of the "Electron Tube Locator" covering the designation system used by major tube manufacturers in the U.S. and Europe. Includes equivalent tables for U.S. VT types and early Navy types.

30 pages, 0.3 lb

B-672

\$4.25 \$2.95



G.E. Essential Characteristics

The 1973 edition of G.E.'s tube data book, giving all the characteristics starting with 00A and 01A. Includes foreign to American tube interchangeability chart, industrial/military cross reference, picture tube data and basing diagrams. Also entertainment semiconductors.

473 pages, 1.3 lbs

B-377

\$11.25 \$6.95



RCA Receiving Tube Manual RC-19

A high quality reprint of the 1959 RCA Receiving Tube Manual (Technical Series RC-19). Includes receiving and picture tube characteristics, basing diagrams, and outline drawings.

380 pages, 1.0 lb

B-654

\$10.95 \$7.95

Part	1-9	10+
------	-----	-----



RCA Receiving Tube Manual RC-30

A high quality reprint of the 1959 RCA Receiving Tube Manual (Technical Series RC-30). Includes tubes not found in RC-19. For example: 6CA&/EL34, 5AR4/GZ34, 6DJ8, 6DN7, 6LF6, 6KG6A/EL509, 6550, 7189, 7591 and the 7868 to name a few. Also includes picture tubes and industrial receiving tubes.

760 pages, 2.0 lb

B-822

\$20.95 \$15.95



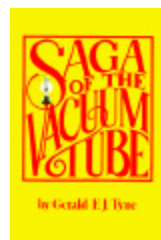
Mullard Circuits for Audio Amplifiers

A reprint of a 1959 publication of Mullard Ltd., detailing high-quality circuits for audio amplifiers, pre-amplifiers and other stereophonic reproduction equipment. These designs were originated by Mullard engineers at the Mullard Applications Research Laboratory, and originally appeared in various magazine articles with notes on construction and assembly.

136 pages, 1.0 lb

B-655

\$15.95 \$14.50



Saga of the Vacuum Tube

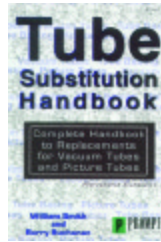
By Gerald F.J. Tyne

The most comprehensive history of the thermionic vacuum tube. Contains hundreds of photos and essential facts to assist in identifying tubes made prior to 1930, and traces the evolution of tube development with histories of the manufacturers. Truly a classic!

494 pages, 1.4 lbs

B-376

\$17.95 \$15.95



Tube Substitution Handbook

Revised Edition

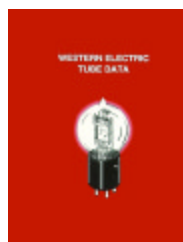
William Smith and Barry Buchanan

This is the most accurate, up to date guide available to determine direct substitutions for receiving tubes and picture tubes.

149 pg. 0.5 lbs

B-825

\$16.00 \$14.95



Western Electric Tube Data

2nd Edition

Hard-to-find data for 44 Western Electric tube types (205D, 300B, 350B, etc.) popular for audio use and early tube collecting. Includes pictures of tubes and complete operating characteristics and curves.

240 pages, 1.5 lbs

B-659

\$16.95 \$13.50

Part 1-9 10+



Tonnes of Tone

By Kevin O'Connor

A collection of projects for electric guitar and bass players. Save money by building your own acoustic preamp; build a two-channel tube pre-amp for guitar, and more. Construct a 15W tube power amp or a true class-A solid state amp. Build a wide range tremolo circuit and an all-tube reverb unit. Circuit operation, construction, & layout guidelines are provided. Every project

uses easy to find parts. 105 pages, 1.0 lb Spiral bound

B-749 \$22.50 \$21.50



The Ultimate Tone

Modifying and Custom Building Tube Guitar Amps

By Kevin O'Connor

Volume 1 - Offers the technician or hobbyist information for properly implementing guitar amplifier modifications. Topics include stage setups, amplifier brand surveys, vacuum tube and power supply operation, preamp circuits and master volume, tube type comparison, and effect loops. Includes an extensive discussion

of switching methods. Includes data for 17 common tube types and for two Hammond Mfg. transformer model lines. Spiral bound, 395 figures. 368 pages, 2.5 lbs

B-695 \$49.95 \$46.95



The Ultimate Tone Volume 2

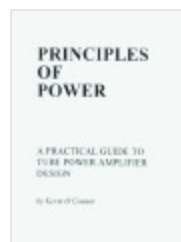
Modifying and Custom Building Tube Guitar Amps

By Kevin O'Connor

Volume 2 - The achievement of great, live sound is the premise used to explore modern high-gain guitar pre-amps; proper treatment of acoustic instruments; tube vocal PA's; dynamic bass gear; all types of tube, semi, hybrid and alternative power amplifier design; power supply mods that are "toneful"; simple switching

methods; speaker cabinet design; getting the most from effects loops and chains; and, modular stage monitoring systems that work! Circuits are explained so the tinkerer can build or modify guitar equipment with confidence and success. Spiral bound. 200 figures. 250 pages, 1.9 lbs

B-772 \$43.95 \$41.95



Principles of Power

A Practical Guide to Tube Power Amplifier Design

By Kevin O'Connor

Offers a simplified method for designing tube power amps for audio. Tube operation is explained, as are circuit principles. Class-A or B, cathode, fixed bias, push-pull and single-ended designs are covered, as are many front-end circuits. Includes designs using off-the-shelf transformers and current production tubes.

Power outputs of 15 to 400W are depicted using pentodes and true triodes. Also covers power supplies, selected tube data, and information on Hammond and Plitron transformers. 210 schematics. 221 pages, 1.7 lbs Spiral bound

B-726 \$31.95 \$29.95



The Tube Amp Book 4th Edition

By Aspen Pittman

Newly revised and expanded, the 4th Edition contains company histories of guitar amp manufacturers. 460 pages of schematics for popular amps, tube data on commonly used audio tubes and 50 pages of "Vintage Fantasy" color pictures of collectible guitars and amps. 765 pages, 2.1 lbs

B-581 \$26.95 \$24.95

Part 1-9 10+



Vacuum Tube Guitar and Bass Amplifier Theory

By Tino Zottola

Describes the history and operation of vacuum tubes as well as how they are used in guitar/bass amplifier circuits. Amplifier electrical and physical layout is then examined. The factors effecting amplifier sound are also described. Included in the appendices is useful info such as: resistor and capacitor codes, vacuum tube electrical data, wire gauge table, and musical scale frequency chart.

59 pages, 0.6 lb

B-735 \$14.95 \$12.95



Vacuum Tube Guitar and Bass Amplifier Servicing

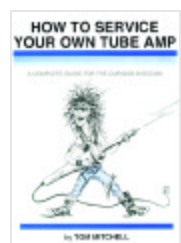
By Tino Zottola

Guitar amp repair is split into several categories: User serviceable problems (fixable without chassis removal), dead and strange sounding amps. Includes sections on amp disassembly, preventative maintenance, special effects repair, signal tracing, component testing and replacement, bias adjustment, tube matching

and amp mods. It's assumed the reader knows basic electronic theory, reading schematics, and can use tools and test equipment.

84 pp, 0.8 lb

B-736 \$14.95 \$12.95

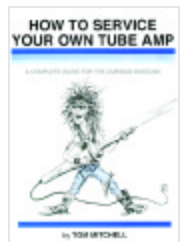


How to Service Your Own Tube Amp

By Tom Mitchell

A well organized and easy-to-understand approach to guitar amplifier repair covering basic electronics, reading schematics, understanding tubes and transformers, tube biasing and use of test equipment. Also provides 10 troubleshooting flowcharts, voltage charts for typical amplifiers, and many modifications that you can do yourself. 250 pages, 2.3 lbs

B-707 \$25.75 \$23.95



How to Service Your Own Tube Amp Book AND Video

By Tom Mitchell

A well-organized and easy-to-understand approach to guitar amplifier repair covering basic electronics, reading schematics, understanding tubes and transformers, tube biasing and use of test equipment. Also provides 10 troubleshooting flowcharts, voltage charts for typical amplifiers, and many modifications that you can do yourself. 250 page manual **with accompanying VHS video cassette.**

2.5 lbs

B-V578 \$63.95 \$56.95



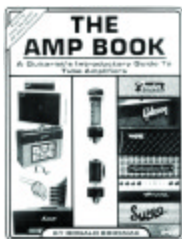
Tube Amp Talk for the Guitarist and Tech

By Gerald Weber

A compilation of articles written for Vintage Guitar magazine from 1993 to 1996. Includes sections with articles on servicing your guitar amp, modifications, and also includes a "Trainwreck" section full of articles written by Ken Fischer for Vintage Guitar. Forward is written by Billy F. Gibbons. 537 pages, 2 lbs

B-773 \$26.95 \$24.95

Part	1-9	10+
------	-----	-----



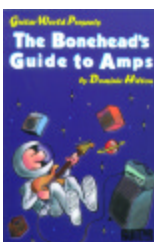
The Amp Book
A Guitarist's Introductory
Guide to Tube Amplifiers

By Donald Brosnac

Covers what an amp is, how they work and what to look for. Includes history of tube amps from 1932 to the present with detailed information on the evolution of amps both internally and externally. Fender, Gibson, Gretsch, Vox, Ampeg as well as others are covered.

64 pages, 0.6 lb
B-688

\$10.95 \$9.95



The Bonehead's Guide to Amps

By Dominic Hilton

Presented by Guitar World Magazine. The ultimate book for everyone who wants a quick and easy to understand guide to amplifiers. You'll find out about: The history of amps • Construction and how amps work • Different types of amps, the sounds they make and how to use them • Which amp is right for you • New vs. used amps and what to look for when buying an amp • Tips and recommendations on how to get the most out of your amp.

78 pages, 0.5 lb
B-854

\$9.95 \$8.75



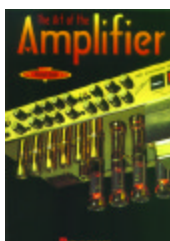
Complete Guide to Guitar and Amp Maintenance
A Practical Manual for Every Guitar Player

By Ritchie Flieger

From the author of *AMPS!* comes an essential survival guide for every guitar player and amp owner. Packed with concise, clearly written tips on troubleshooting and repairs, with straight forward, step-by-step instructions using readily available tools. Contains over 150 photos.

80 pages, 0.6 lb
B-701

\$13.95 \$12.75



The Art of the Amplifier

By Michael Doyle

Pays tribute to the history and beauty of generations of amplifiers with nearly 200 stunning full color photos. Coverage of Ampeg, Fender, Marshall, Mesa Boogie, Orange, Selmer, Soldano, Vox and others.

80 pages, 0.8 lb

B-855

\$21.95 \$19.95



A Desktop Reference of Hip Vintage Guitar Amps

By Gerald Weber owner of Kendrick Amplifiers

He answers questions about vintage guitar amplifiers on topics such as biasing for output tubes and easy modifications. He includes an analysis of Fender classics such as the Tweed Champ, Tweed Deluxe, Deluxe Reverb, Super Reverb and others. Also included are schematics for Ampeg, Fender, Gibson, Hiwatt, Magnatone,

Marshall, Rickenbacker, Silvertone and Vox amps.

500 pages, 1.5 lbs

B-663

\$24.25 \$21.95

Part	1-9	10+
------	-----	-----



The High Performance Marshall Handbook
A Guide to Great Marshall Amplifier Sounds

By John Boehnlein

Includes chapters on standard amplifiers from 1962 to 1990, re-tubing for maximum performance, how to overdrive master volume and much more.

55 pages, 0.5 lbs

B-696

\$14.95 \$12.95



The History of Marshall

By Michael Doyle

The definitive account of the guitar manufacturer known as the "sound of rock." Includes complete listings of every product Marshall ever made, over 100 schematics, the history of the Celestion speaker and early catalog reprints. Hundreds of photographs, including 64 color plates.

254 pages, 2.1 lbs

B-661

\$29.95 \$27.95



Dave Funk's Tube Amp Workbook
Complete Guide to Vintage Tube Amplifiers Volume 1 - Fender

By Dave Funk

A large, easy to read tube amp book, designed to be an invaluable reference to those working on or building their own tube amps. Learn how to

approach a service job, the tools you'll need on your workbench, and how to use them. Loaded with cross-reference material, lookup tables, formulas and the information you'll need to know when your amp is working properly.

421 pages, 2.5 lbs

B-732

\$25.95 \$25.25



Inside Tube Amps
The Book on Tube Amp Technology

By Dan Torres

This book is written for musicians, not technicians. This book will help you get your personal sonic signature, and give you the knowledge to change it when your tastes change. Some approaches are new and experimental, some are very old. Looks at "standard practices" as well as tricks and techniques outside of the "perfect specs."

310 pages, 1.9 lbs

B-733

\$30.95 \$28.50



The Stompbox Cookbook

By Nick Boscorelli

This book shows you how to build 38 advanced effects for electric guitar & bass, including soft-knee compressor with auto-variable attack & decay, stereo vibrato, spring reverb, quad parametric EQ, super sustainer, 'designer' tremolos, & custom fuzz, plus a wealth of ingredients to cook up new stomp boxes. Contains over 600 hundred photos &

schematics. Softcover

259 pages, 1.75 lbs

B-834

\$26.95 \$23.95

Part	1-9	10+
------	-----	-----

**50 Years of Fender***By Tony Bacon**Chronology Compiled by Paul Day*

Fender is the most successful modern maker of electric guitars, and this year marks the 50th anniversary of its first instrument. This new book tells the complete year-by-year story of Fender's development from 1950 to 2000 accompanied by stunning photographs of players, instruments and memorabilia.

128 pages, 1.5 lb

B-870

\$18.95

\$16.95

**Tube Data Book Set**

Want all the tube specifications and cross references? Buy all 4 books and save over 18%! 3 lbs

B-377 GE Essential Characteristics**B-654** RCA Receiving Tube Manual (RC-19)**B-825** Tube Substitution Handbook**B-672** Electron Tube Resume**B-DATABOOKS**

\$38.95

\$31.95

**Firsts in High Fidelity***By Stephen Spicer*

This book is the unique and comprehensive story about one of the world's best hi-fi audio companies - H.J. Leak & Co. Ltd. The reader is presented with a stunning collection of delights, through a lucid extensively researched text, accompanied by over 300 photographs many of which have been supplied from personal collections. A must for any audiophile is this

compendium of 30 circuit diagrams for the classic designs of the day, including some of the rarest model amps and radio tuners produced by the company.

275 pages, 1.8 lb

B-873

\$21.95

\$18.95

**Valve Amplifiers, Second Edition***By Morgan Jones*

Builds on the strength of the first edition; do-it yourself basics, circuit analysis, theory, design principles, construction techniques, etc. This expanded edition has new sections on output transformer problems and heater regulators, and three new projects, including a low-noise singled-ended LP stage.

2 lbs

B-838

\$44.95

\$41.50

**Introduction to Loudspeaker Design***By John L. Murphy*

For all hobbyists, students and engineers that are interested in an overview of the technology of loudspeakers. Topics include design tradeoffs, spatial loading, diffraction loss, cavity effect and enclosure construction. There is also a complete chapter about crossover design.

166 pages, 1 lb

B-811

\$22.95

\$19.95

Part	1-9	10+
------	-----	-----

**GlassWare Tube Manual**

A true 32-bit Windows program (95/98/NT), GlassWare Tube Manual is both user friendly and powerful. It's all here: plate curves, mu, rp, Gm, Vh, Ih, base and outline schematics, and essential characteristics. Powerful search and filtering tools help look up your favorite tubes (6SN7, KT88, 2A3, and 6922) and discover other great tubes you didn't know existed. With the aid of easy-to-use editing tools, tubes can be added or subtracted to the database. Keep track of your own tube collection with GlassWare Tube Manual's personal tube database. Print out anything and everything in the database. Tube substitutions are given for over 2000 tube types. CD-ROM

B-CD055

\$35.95

\$34.95

Tube CAD

The tube voltage amplifier design program for Windows 3.1/95/98/NT. Tube CAD covers 52 tube circuits in all. Program covers 13 core tube circuit topologies, each divided into four variations: SRPP, cascode, cathode follower, push-pull, split load phase splitter... Circuit variables (such as tube type, B+ voltage, plate and cathode resistor values) are entered in field boxes and the AC and DC results are then displayed. Tube CAD includes data for 32 triode tube types, plus define characteristics for any triode not included in the library. Includes 40+ page user manual. 3.5" diskette.

B-CD028

\$35.95

\$34.95

SE Amp CAD

SE Amp CAD is a Windows program that helps you design, understand and modify single-ended amplifier output stages. True Curves™ is the name of the new mathematical model used in SE Amp CAD. True Curves™ knows how a 300B or an 845 really bends: how the plate current varies with changes in grid to cathode voltage versus changes in plate voltages. With the True Curves™ tube model in SE Amp CAD you can model, evaluate, and understand a tube single-ended output stage. SE Amp CAD holds 30 tube models (triode and triode-connected pentodes) and over 100 output transformer profiles. The output data results, the output circuit schematic, the tube's plate curves (grid voltage, plate voltage, plate current, rp, mu, Gm), the input signal and the resulting output signal—all are displayed interactively by SE Amp CAD. 3.5" diskette.

B-CD031

\$35.95

\$34.95

Audio Gadgets

Audio Gadgets is a program for Windows 3.1/95/98/NT that helps you design a step attenuator up to high voltage power supply. Easy to use, yet powerful. Audio Gadgets is ten programs in one: stepped attenuator design, op-amp circuit design, power supply design, filter design, adj. regulator design, resistor calculator, speaker design, RIAA equalization, tube circuit design and more. Print previews and reports. Includes 40+ page user manual. 3.5" diskette.

B-CD027

\$35.95

\$34.95

VT DATA

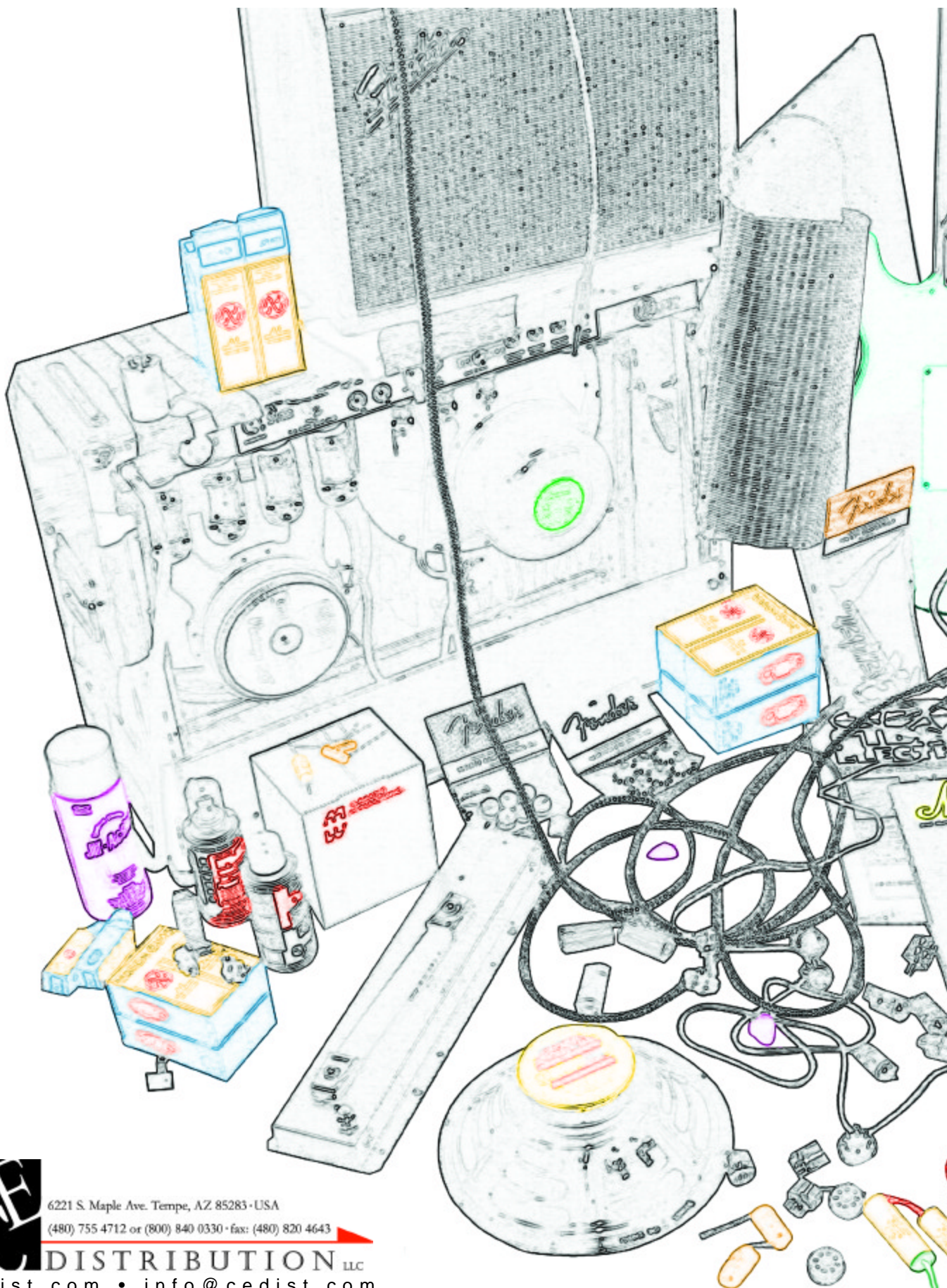
For PCs (DOS 4.01 or higher, or Windows required), this package is a Tube Manual on your computer. It has the information expected in a tube manual, plus several new, powerful features. Look up specs and pin outs, search for tubes that meet your specs, and find substitutes. VT DATA also provides features for maintaining your personal tube inventory.

Intended for designers, repairmen, and collectors, VT DATA's database contains electrical specs for over 1200 common tubes, including tubes of historical interest, like the early "two digit" and hi-fi audio types. 3.5" disk.

B-CD029

\$26.95

\$24.95



6221 S. Maple Ave. Tempe, AZ 85283 • USA

(480) 755 4712 or (800) 840 0330 • fax: (480) 820 4643

DISTRIBUTION LLC

www.cedist.com • info@cedist.com