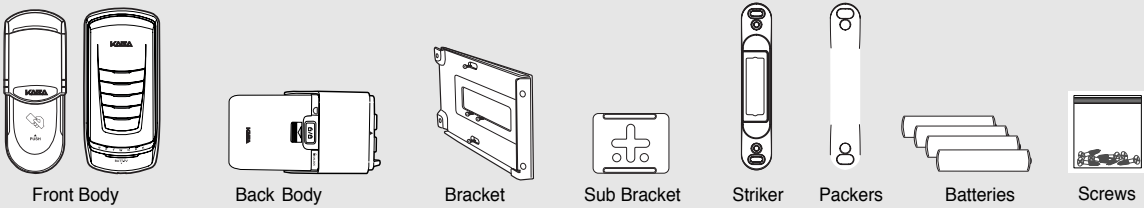


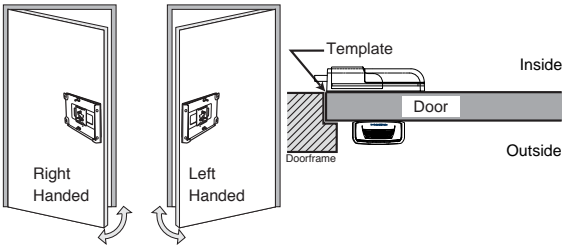
KABA Installation Instructions

Before starting installation plan your steps, place the Front Body, Back Body and Striker in position to work out what needs to be packed, cut or modified for each customised job. Box contents includes:



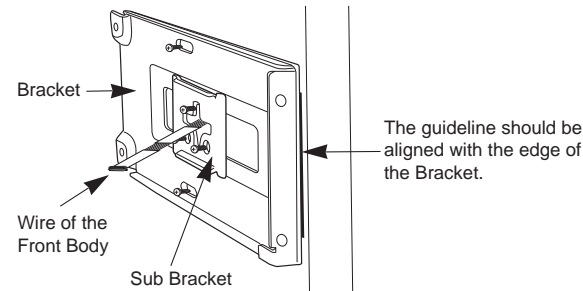
Tools Required: pencil, ruler, square, drill, 32mm hole saw, 1/8 drill bit, phillips head screwdriver, hammer, chisel.

1. Remove the existing dead lock. Check the Front Body fits through the existing hole or mark a new centre hole by positioning the Front Body on the outside of the door with the door closed.
- This lock has an adjustable backset distance between 50-100mm from the door edge. Drill the centre hole 32mm diameter, from both sides to stop splintering of door.

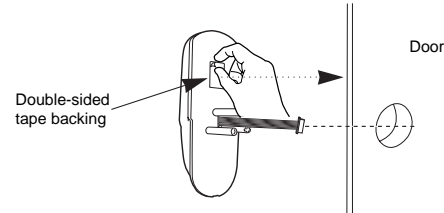


2. According to the RH/LH door swing, fold the template at 90° and place on the inside panel of the door, folded around the door edge. Line up with the centerline of the hole through the door, mark and pilot drill the 5 mounting points on the door taking care not to drill through door.

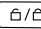
3. Align the Bracket and screw it to the door loosely with five metal or wood screws. Adjust leaving 5mm between the face of the Bracket to the door edge so that the Back Body will sit flush with the door edge. Tighten screws.

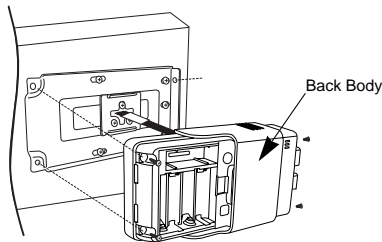


4. Remove double-sided tape backing from Front Body. Put the wire through the door hole and stick the Front Body in position to the outside of the door.

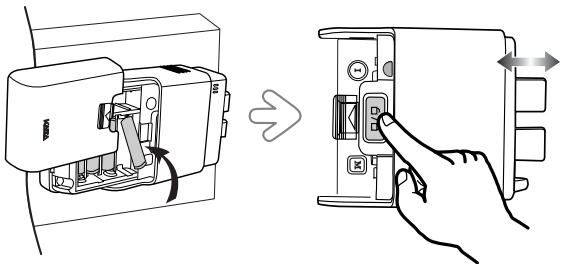


5. Pass the wire through the Bracket and Sub Bracket as shown in the images above. Fix the Sub Bracket to the Front Body with the 3 fixing screws.

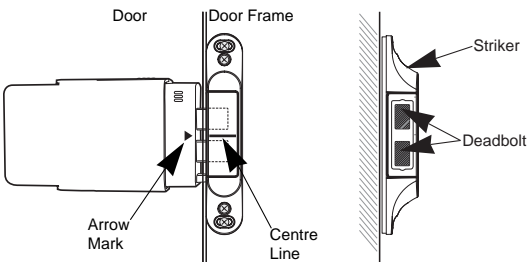
6. Connect the wire to the main PCB on the Back Body. Put four AA batteries in to test the unit. Test the [open/close] button  on the Back Body and make sure that the light on the Front Body is working.



7. Fix the Back Body to the Bracket using the 4 screws, taking care not to squash the wire by tightening too much. Replace the battery cover.





8. Fit the Striker by using the packing plates or cutting the door frame as necessary to ensure the dead bolt will enter the Striker correctly. Line up the centre line on the Striker with the arrow on the Back Body. If you need to cut back the door frame trace around Striker body or use the template provided. Cut out piece and clean up with a chisel.



9. Put screws in the very top and bottom positions. Line up Striker with a 3-5mm gap between it and the Back Body. Screw it into position and test the unit.

Check points for Installer

- The default Security Code is 1234567890
Test the Security Code works by pressing  123467890 
- Check the Automatic Locking works properly. The door should automatically lock 5 seconds after closing.

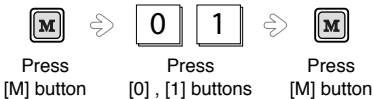
Check points for Owner

- Re-register your own Security Code
- Read the User Manual before further use
- Register your own Card Keys / Fingerprints
- Understand the Emergency Power Supply feature
- Understand the Forced Lock Modes

Register new Security Code



Automatic Lock Mode



Manual Lock Mode

