

nord piano2

H A M M E R A C T I O N HA88

User Manual Nord Piano 2

OS Version 1.x



CAUTION: TO REDUCE THE RISK OF ELECTRIC SHOCK
DO NOT REMOVE COVER (OR BACK).
NO USER SERVICEABLE PARTS INSIDE.
REFER SERVICING TO QUALIFIED PERSONNEL.

ATTENTION: POUR EVITER LES RISQUES DE CHOC ELECTRIQUE, NE PAS ENLEVER LE COUVERCLE.
AUCUN ENTRETIEN DE PIECES INTERIEURES PAR L'USAGER.
CONFIER L'ENTRETIEN AU PERSONNEL QUALIFE.

AVIS: POUR EVITER LES RISQUES D'INCIDENTE OU D'ELECTROCUTION, N'EXPOSEZ PAS CET ARTICLE A LA PLUIE OU L'HUMIDITE.



The lightning flash with the arrowhead symbol within an equilateral triangle is intended to alert the user to the presence of uninsulated voltage within the products enclosure that may be of sufficient magnitude to constitute a risk of electric shock to persons.

Le symbole éclair avec le point de flèche à l'intérieur d'un triangle équilatéral est utilisé pour alerter l'utilisateur de la présence à l'intérieur du coffret de "voltage dangereux" non isolé d'ampleur suffisante pour constituer un risque d'électrocution.



The exclamation mark within an equilateral triangle is intended to alert the user to the presence of important operating and maintenance (servicing) instructions in the literature accompanying the product.

Le point d'exclamation à l'intérieur d'un triangle équilatéral est employé pour alerter l'utilisateur de la présence d'instructions importantes pour le fonctionnement et l'entretien (service) dans le livret d'instructions accompagnant l'appareil.

Instructions pertaining to a risk of fire, electric shock or injury to persons.

IMPORTANT SAFETY INSTRUCTIONS

SAVE THESE INSTRUCTIONS

Warning - When using electric products, basic precautions should always be followed, including the following:

- 1) Read these instructions.
- 2) Keep these instructions.
- 3) Heed all warnings.
- 4) Follow all instructions.
- 5) Do not use this apparatus near water.
- 6) Clean only with dry cloth.
- 7) Do not block any ventilation openings. Install in accordance with the manufacturer's instructions.
- 8) Do not install near any heat sources such as radiators, heat registers, stoves, or other apparatus (including amplifiers) that produce heat.
- 9) Do not defeat the safety purpose of the polarized or grounding-type plug. A polarized plug has two blades with one wider than the other. A grounding type plug has two blades and a third grounding prong. The wide blade or the third prong are provided for your safety. If the provided plug does not fit into your outlet, consult an electrician for replacement of the obsolete outlet.
- 10) Protect the power cord from being walked on or pinched particularly at plugs, convenience receptacles, and the point where they exit from the apparatus.
- 11) Only use attachments/accessories specified by the manufacturer.
- 12) Use only with the cart, stand, tripod, bracket, or table specified by the manufacturer, or sold with the apparatus. When a cart is used, use caution when moving the cart/apparatus combination to avoid injury from tip-over.
- 13) Unplug this apparatus during lightning storms or when unused for long periods of time.
- 14) Refer all servicing to qualified service personnel. Servicing is required when the apparatus has been damaged in any way, such as power-supply cord or plug is damaged, liquid has been spilled or objects have fallen into the apparatus, the apparatus has been exposed to rain or moisture, does not operate normally, or has been dropped.



Additional Safety Information

No naked flame sources, such as lighted candles, should be placed on the apparatus;

Do not use the apparatus in tropical climates.

WARNING: To reduce the risk of fire or electric shock, do not expose this apparatus to rain or moisture.

The apparatus shall not be exposed to dripping or splashing and that no objects filled with liquids, such as vases, shall be placed on the apparatus.

The mains plug is used as the disconnect device and shall remain readily operable.

Il convient de ne pas placer sur l'appareil de sources de flammes nues, telles que des bougies allumées;

L'appareil n'est pas destiné à être utilisé sous un climat tropical.

L'appareil ne doit pas être exposé à des égouttements d'eau ou des éclaboussures et de plus qu'aucun objet rempli de liquide tel que des vases ne doit être placé sur l'appareil.

Lorsque la prise du réseau d'alimentation est utilisée comme dispositif de déconnexion, ce dispositif doit demeurer aisément accessible.

Trademarks: The Nord logo is a trademark of Clavia DMI AB. All other trademarks mentioned in this publication are the properties of their respective holders.

Specifications and appearances are subject to change without notice.

Copyright © Clavia DMI AB



Nord Piano 2 User Manual

1 Introduction

Thank you!	4
About this manual	4
OS and internal memory	4
Nord Sound Manager	4
Factory programs	4
Restoring the factory content	4
OS upgrades	4
Free sounds	4
Disclaimer	4

2 About the Nord Piano 2

The Instrument	5
Piano Library V5	5
Small, Medium, Large & Xtra Large	5
String Resonance	5
Pedal Noise	5
Sample Synth	6

3 Panel Overview

Knobs & buttons	7
Knobs	7
Selector buttons	7
On/Off and Source buttons	7
Shift button	7

4 Connections

Audio Connections	8
Headphones	8
Left Out and Right Out	8
Monitor In	8
MIDI Connections	8
MIDI In	8
MIDI Out	8
USB Connection	8
Pedal Connections	9
Sustain Pedal Input	9
Triple Pedal	9
Volume Pedal Input	9
Music Stand	9

5 Getting Started

About the programs	10
Select a program	10
Edit a program	10
Select a new piano sound	10
Memory Protection	11
Storing a program	11
Live Mode	11
Selecting a Sample Synth sound	11
Split the keyboard	12
Transpose	12
Adding effects	12
Use the delay	12
Acoustics	13
Kbd Touch settings	13

6 Nord Piano 2 Reference

Master level	14
MIDI Indicator	14
Program section	14
Up/Down buttons	14
Bank selection	14
Menus	14
Display	14
Store	14
Store As...	14
Programs 1 ~ 5	15
Shift	15
Live Mode	15
Panic	15
Kbd Split	15
Synt/Pno	15
Pno/Synt	15
Set Split	15
Transpose	15
Transpose Clear	15
Kbd Touch	15
Mono Output	15
Piano	16
Level	16
Acoustics	16
String Resonance	16
Long Release	16
Pedal Noise	16
Piano Type	16
Piano Model	16
Piano Octave Shift	17
On	17
Info	17
Sample Synth	17
Level	17
Attack	17
Release	17
On	17
Info	17
Sample	17
Sample Octave Shift	17
Effects	17
Effect 1	18
Effect 2	18
Delay	18
Equalizer	18
Amp/Comp	18
Reverb	18

7 The Menus

System Menu	19
Memory Protect – On, Off	19
Fine Tune	19
Global Transpose	19
MIDI Menu	19
MIDI Channel	19
Local Control	19
Control Change (CC) Mode	19
Program Change Mode	19
Send CC	19
Dump Program One, All	20
Sound Menu	20
Piano Pedal Noise level	20
Piano String Res Level	20
FX Delay Mode	20
Pedal Menu	20
Piano Pedal	20
Volume Pedal Type	20
Volume Pedal Func	20
Sostenuto Pedal Func	20

8 Nord Sound Manager

System requirements	21
Installation	21
USB Driver	21
Sound Manager	21
Overview	21
The Toolbar	22
The Tabs	22
Partition Memory Indicator	22
Right/Ctrl-Clicking	22
File Formats	22
The Quick Tour	23
Transfer sounds to the Nord Piano 2	23
Deleting a sound	23
Download a new sound	23
Replace	23
Relink	24
Download Queue	24
Upload sounds from the Nord Piano 2	24
Program Bundles	24
Upload a Program Bundle	24
Downloading a Bundle	25
Organize the program partition	26
Search Box	26
Auto Select	26
Backup	26
Restore	26
Sound Manager reference	27
Toolbar	27
Menus	29
File menu	29
Edit menu	30
View menu	30
Help menu	30
Tabs	31
Piano – Samp Lib - Program	31
Search Box	31
Loc - Location	31
Name	31
Size	31
Ver – Version Number	31
Info	31
Footer Area	31
Partition Memory Indicator	31
Cancel Button	31
Progress Bar	31
Message/Text Area	31
Updates and pianos	31

9 MIDI

About the MIDI implementation	32
Note On/Off	32
Controllers	32
Keyboard velocity	32
Program change	32
MIDI Sysex (System Exclusive)	32
Nord Piano 2 with a sequencer	32
Connections	32
Local On/Off	32
MIDI Channel	32
Program Change	32
Controllers	32
About controllers & "chasing"	32
Program & Controller dumps	33
Sending program dumps	33
Sending MIDI Controller dumps	33
Receive MIDI SysEx dumps	33
MIDI Controller list	33
MIDI Implementation Chart	34

10 Index

Index	35
-------	----

1 Introduction

Thank you!

We'd first like to thank you for purchasing the Nord Piano 2. Our goal when we developed the Nord Piano 2 was to create the best professional, portable stage piano with an integrated sample synth on the market. We hope that you will have as much fun owning, playing and using the instrument, as we had developing it.

About this manual

You are probably very eager to start using your new instrument, and we sure don't want to keep you from having fun. We will try to cover all the essential aspects on how to use the Nord Piano 2 in the very first few pages of this manual. After that follows the reference section where all the functions are explained in detail.

OS and internal memory

The operating system, programs and pianos in the Nord Piano 2 are stored in a Flash memory. A Flash memory is a great thing, it retains the data when the power is turned off. Another big advantage is that you can replace data in the Flash memory at any time. This means that you will be able to download upgrades, pianos and programs to your Nord Piano 2 from a computer. The Nord Piano 2 features a USB port for quick and easy download of new pianos.

Nord Sound Manager

The Nord Sound Manager is a computer application that allows you to organize and change the sounds and memory content in the Nord Piano 2. This easy to use application is included on the DVD that was delivered in the box with the instrument. Read more on how to use the Nord Sound Manager in chapter 8 in this manual.

Factory programs

The internal program memory of the Nord Piano 2 consists of 240 programs, organized in 2 banks A & B, each with 24 pages with 5 programs in each page. There are also five Live buffer memories, which will continuously store any changes as they are made.

All of the 240 programs in the Nord Piano 2 can be used to store your own settings. To make sure you don't accidentally overwrite programs you want to keep, it's a good idea to back up your sounds regularly on a computer using the Nord Sound Manager application.

Restoring the factory content

The factory programs, samples and pianos are available as Nord Sound Manager backup files for download at the Nord web site at www.nordkeyboards.com or on the included Nord Piano DVD.

OS upgrades

The latest OS version for Nord Piano 2 is available for download at the Nord Keyboards website. Please visit us on the web from time to time, to make sure you have the latest version in your unit.

Free sounds

Since the Nord Piano 2 is designed as an "open system", each and every piano and every sample in the Nord Piano 2 can be replaced by you. This is done using the Nord Sound Manager application.

The Nord Piano 2 is compatible with the continuously expanding Nord Piano and Nord Sample Libraries. Many of these sounds are included on the DVDs that accompanies the Piano. When new sounds are available, you can download these for free from the Nord website. Yet another good reason to visit the website from time to time.

Disclaimer

Any trademarks and brand names mentioned in this manual are the property of their respective owners and are not affiliated or associated with Clavia. These trademarks and brand names are only mentioned to describe the types of sounds reproduced by Nord Piano 2.

2 About the Nord Piano 2

The Instrument

To make a great tool we believe that you have to put all the focus on a few important things and that is exactly what we have tried to achieve with the Nord Piano 2. A great piano sound and maximum expressiveness, true feel, with a natural keyboard response and authentic sound quality combined with a Sample Synth and some great effects makes for an inspirational instrument that we hope you will use and enjoy for a long time.

Let's look at some of the key features:

Piano Library V5

The Nord Piano 2 is compatible with version 5 of the piano sounds in the Nord Piano Library. We have spent a lot of time and effort in creating our best piano sounds ever, to match the features available in the Piano 2.

The piano sounds are included on the DVD and are organized in categories and in some cases available in various sizes (for the acoustic grand pianos and uprights). New sounds will be available free of charge on the www.nordkeyboards.com website.

Small, Medium, Large & Xtra Large

All sizes share the same amount of velocity layers, and the Small, Medium and Large (Sml, Med & Lrg) have same number of zones that are mapped across the keyboard. This means that you can rely on a consistent quality in regards to the playability and expressiveness in the basic sound of every piano, no matter what size you choose to install in your Nord Piano Library compatible unit.

Small are the pianos that uses the least amount of space in the piano memory, but still carry a big and powerful punch. This version does not contain any String Resonance samples at all. If a Small piano is selected in the Nord Piano 2, the String Resonance feature will be disabled.

The Medium versions have pedal-down String Resonance samples in the important middle region of the range, but omit these in the lowest and the highest areas. This gives you a good ratio between functionality and size.

The Large versions have the pedal-down String Resonance samples all across the keyboard, providing you with the fullest of sounds, but also the largest size.

Some of the pianos are also available as Xtra Large (XL) versions. These versions provide an increased sound quality and expressiveness as they are fully mapped across an 88-note keyboard. Every key has its own samples.

String Resonance

String Resonance is the acoustic phenomenon that occurs inside an acoustic piano or grand when strings, or parts of strings, resonate at their fundamental or harmonic frequencies when other strings are played.

When this functionality is turned on using the Nord Piano 2's acoustic pianos, all notes you play will affect each other to reproduce the wonderful acoustics that occurs inside an acoustic grand or upright piano.

String Resonance is also very noticeable if you use the sustain pedal with the String Resonance feature enabled, on any Medium and Large acoustic pianos. The notes that you play will have a beautiful sound quality to them, when all the un-dampened strings resonate as you play sustained notes.

String Resonance also feature a crescendo effect. If you play the same key repeatedly with the same force, the sound will change. This is originally caused by the hammers hitting the vibrating string in various phases, and creates a nice, gentle fluctuation in volume and timbre in the Nord Piano 2.

Pedal Noise

The included Nord Triple Pedal offers an unprecedented functionality, with the addition of a dynamic control of the mechanical noise during operation, and the ability for you as a player to use half pedaling and "release and catch again" techniques.

When the sustain pedal is operated on a acoustic grand or upright, many different sounds are produced by the mechanical components, several of the sounds can be reproduced by the Nord Piano.

The dampers are lifted from the strings when the sustain pedal is pressed down, and a beautiful sizzle can be heard. When you remove the foot from the pedal, the dampers are returned on to the strings, which creates a different, muted type of sound. Since the Nord Triple Pedal is dynamic, you can experiment with various forces in pressing, and also in releasing the pedal. If you just slip your foot of the sustain pedal, allowing the return spring to spring with full force, a noticeable sound will appear.

The "floor sound" is heard when the pedal reaches the bottom of its travel. You can experience this in isolation if you press down the pedal completely, then lift it less than halfway back up and then press down again.

If you lift the pedal and immediately press it down again, a very rich sound will be heard. Another big sound is The Stomp, which requires you to start with your foot above the actual pedal, in order to be able to reach the high velocity that is required to get this sound.

Sample Synth

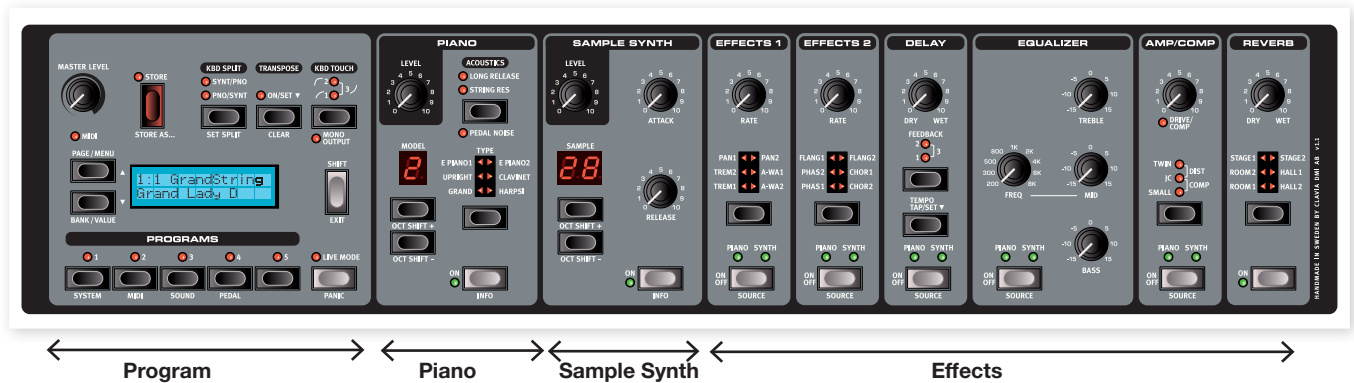
The Sample Synth in the Nord Piano 2 allows you to layer a second sound on top of the pianos, or to split the keyboard in two halves, with one sound in each half. The Nord Piano 2 is delivered with many acoustic and electric sounds that supplement the piano sounds.

You will find various types of strings and pads that can be used to create lush layers. Organs, mallets and synthesizer sounds expand the keyboard capabilities of the instrument and a selection of basses makes it easy to create dual-instrument performances with left-hand bass and right hand backing chords.

All the sounds in the sample memory can be replaced if you want. This is done by using the Nord Sound Manager, with some very user-friendly methods that are explained in the Sound Manager chapter in this manual. There are many samples to choose from. When this manual was printed the Nord Sample Library contained more than one thousand samples.

The samples can be found on the Nord Sample Library DVD that was delivered in the box with the instrument. When new samples become available, they are published on the www.nordkeyboards.com web site, where you can download every sample in the Nord Sample Library to your computer, free of charge.

3 Panel Overview



The front panel of the Nord Piano 2 has four main areas, Program, Piano, Sample Synth, and Effects. We'll familiarize ourselves briefly with the panel here and describe the functions in detail in the following chapters.

On the left upper part of the panel are the Master Level knob that controls the entire instrument's output level at the two output jacks and the head-phone output. This control is not programmable.

The Program Bank section contains the display and the functions that are used to select and store the programs, to set the System, Sound, MIDI and Pedal functions. We'll describe this area in greater detail starting at page 14.

Moving towards the middle of the panel, to the left of the display is the instrument section where you select the actual piano and/or synth sounds.

The Effect section contains the functions of the effects. Please refer to page 17 and onwards for more information.

Knobs & buttons

Knobs

The knobs control the continuously variable parameters in the Nord Piano 2.

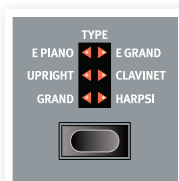
- ❗ A parameter value can be totally different from the knob's physical position when you load a Program. As soon as you start turning the knob, the value will 'snap' to the knob's physical position.



Selector buttons

Selector buttons are used to select one setting in an array. Selector buttons have a set of round or triangular LEDs to indicate the current setting. Press the button several times to cycle through the possible options.

- 💡 Holding Shift and pressing a selector button (with the exception of the Type button shown here) will cycle through the settings in a counter clockwise fashion.



On/Off and Source buttons

On/Off buttons are used for activating a parameter or a group of parameters such as effects. The Effect's On/Off buttons act as source selectors, hold Shift and press repeatedly to select piano or synth. You can also double-tap on a source button to make the source selection.



Shift button

Some buttons have a secondary function, which will be available if you hold down Shift while pressing the button. The name of the secondary function is printed below the button. Shift is also used together with the Up/Down buttons when you want to change a setting in the System, MIDI or Sound menus.



- 💡 If you press and hold Shift while turning a knob, the parameter value will be presented in the display, without being changed.

Shift is also used to Exit a Store procedure if you change your mind or to exit from a select menu when you are finished with those settings.

4 Connections



Audio Connections

Headphones

This is where you connect a 1/4" stereo connector from a pair of headphones.

Left Out and Right Out

The left and right line level outputs from the Nord Piano 2 are unbalanced. Use 1/4" connectors to connect the Nord Piano 2 to an amplifier or recording equipment.

The Nord Piano 2 is a stereo instrument, with separate signal paths for the left and right audio channels. To properly experience the Nord Piano 2, use both outputs in a stereo operation.

General guide on audio connections:

- Make all the connections before you turn on the power to your amplifier.
- Turn on the power to your amplifier last.
- Turn off the power to your amplifier first.

⚠ *Playing at a high volume level can result in hearing impairments such as permanent hearing loss.*

Monitor In

Use this to connect and monitor a signal from an mp3 or a CD player at the Nord Piano 2's headphone output. This allows you to e.g. rehearse with the instrument to pre-recorded music.

❗ *Signals connected to this input will not be processed with the Piano 2's effects or appear at the Piano's left and right output jacks.*

MIDI Connections

MIDI In

MIDI connection used to receive MIDI data to the Nord Piano 2 from other equipment such as keyboards or computers.

MIDI Out

MIDI connection used for transmitting keyboard- and panel generated MIDI data from the Nord Piano 2 to other equipment such as sound modules or computers.

USB Connection

The USB connection is used for the Nord Piano 2 to communicate with a personal computer in order to update the OS or to add or replace any of the piano sounds. The computer can run the Nord Sound Manager application, or be used to transfer the operating system if the unit needs to be updated.

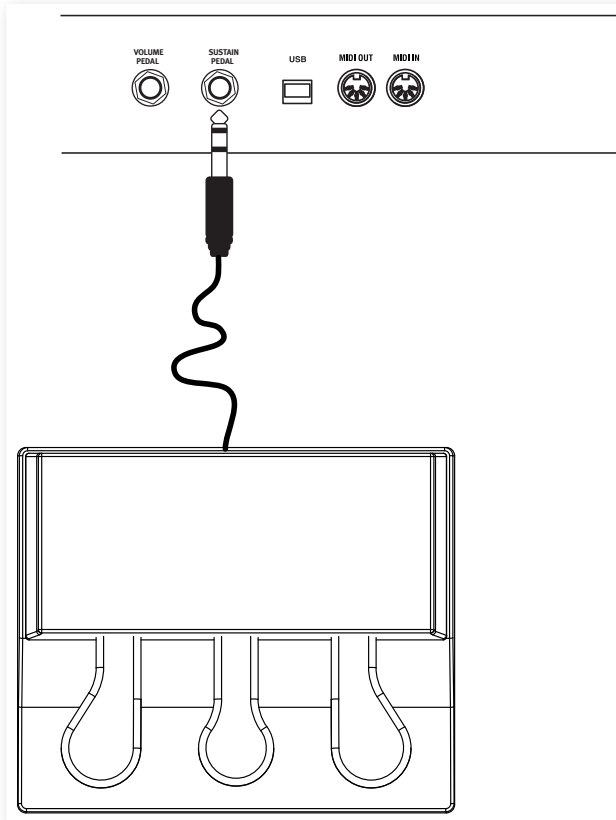
The Nord Piano 2 can also transmit and receive MIDI data via the USB interface, read more about this in the MIDI chapter.

❗ *Computers running Microsoft Windows operating systems need a driver for the USB connection to work. The installer for the driver can be found on the enclosed Nord DVD, or at the www.nordkeyboards.com website.*

Pedal Connections

Sustain Pedal Input

The Nord Piano 2 has an Sustain Pedal input where you attach the Nord Triple Pedal. If this pedal is unavailable, you can use a standard, non-continuous sustain pedal.



Connect the 1/4" stereo connector from the Nord Triple Pedal to the Sustain Pedal connector on the Nord Piano 2.

Triple Pedal

The Nord Triple Pedal has the functionality of three pedals in one unit.

Sustain

The right pedal is the sustain pedal. If you operate this, all the notes that you play will sustain until the pedal is released again. The Triple Pedal can also introduce the dynamic pedal noise functionality, and it can be used with half pedaling techniques by pressing it down for parts of its travel on certain pianos.

Soft

The left pedal is the soft pedal, also known as the Una Corda. When you press this pedal, all the notes you play will be slightly lower in volume and also have a slightly more subdued tone quality.

Sostenuto

The middle pedal is the Sostenuto. By using this pedal, you can sustain selected notes, while other notes remain unaffected. Only the notes that are held down when the pedal is operated will sustain. Other notes that you play while keeping the pedal down will sound as if no pedal was operated at all.

Additional features

The middle pedal can be set in the Pedal menu to get additional functionalities. It can be used to sustain only the Sample Synth, or it can be used to sustain the Synth and at the same time remove the keyboard from controlling the Synth. This makes it possible to sustain a Synth chord with the middle pedal, while continue to play a piano sound and have separate sustain control over that piano, with the "normal" sustain pedal. The additional functionality is set in the Pedal Menu, read more on how to do this on page 20.

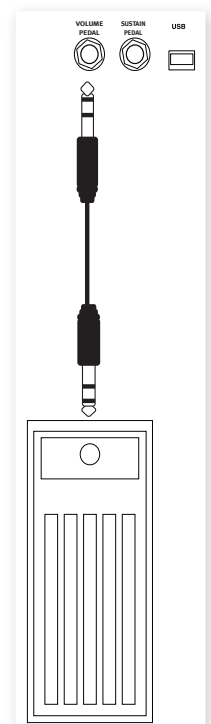
i If the Nord Triple Pedal is unavailable, you can use a standard sustain- or foot switch type pedal from almost any other manufacturer. In order for the functionality to be correct, you may have to change a setting in the Pedal menu. Read more about this on page 20.

Volume Pedal Input

Connect an Expression pedal to this input in order to be able to control the volume of the Piano, the Sample Synth or both.

When connecting an expression-type pedal to the Volume Pedal input, you should use a cable with a stereo connector (Tip-Ring-Sleeve), the pedal must have a stereo output jack.

Pedals from various manufacturers have different characteristics. To simplify setup, the most common pedal models (Roland, Yamaha, Korg and Fatar) are pre-configured in the Nord Piano 2, you simply select the type of pedal in the Pedal menu, read more about this on page 20.



Music Stand

The rear panel on the Nord Piano 2 has two brackets where the Music Stand (optional accessory) can be mounted.

5 Getting Started

Let's take a few minutes to get familiar with the Nord Piano 2. The user interface is designed to be as intuitive as possible, and to perform as well as you do in a live situation. We hope that you soon will feel confident in using it, and in this short chapter, we will go through most of the functions.

About the programs

Complete settings of every function on the panel are stored in the Program memory of the Nord Piano 2. This memory area has 240 locations that are organized in 2 Banks (A & B), each Bank with 24 Pages, with 5 programs in each page. Every program can be edited and replaced as you wish. A complete set of the factory programs are available on the Nord DVD and on our website.

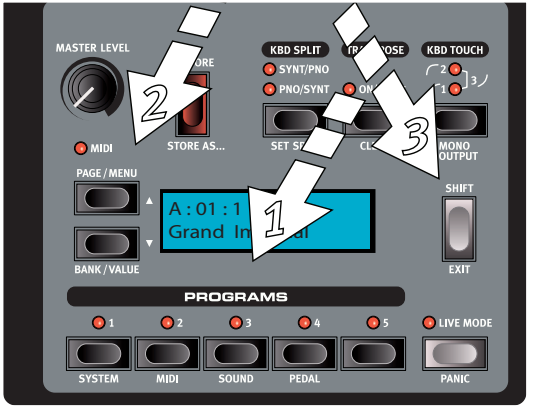
Select a program

- 1 Programs are selected by pressing the five Program buttons, located below the display.
- 2 Press the Up or Down buttons repeatedly, located to the left of the display, to select the desired Page number. When you've changed the Page, a program will be active immediately.

The Factory programs are organized in the following fashion, which allow you to select a program number and then find similar programs by changing the page with the Up/Down buttons:

Program	Description
1	Clean, un-processsed pianos.
2	Pianos with EQ.
3	Split programs with pianos to the right.
4, 5	Layers and pianos with more effects.

Press and hold the Up or Down buttons to continuously scroll through the Pages.



- 3 Hold Shift and press Up or Down to select Bank A or Bank B.

Edit a program

Editing a program is as easy grabbing a knob or pressing a button to change an existing setting; go ahead and give it a quick try.

- 1 Use the buttons to get bank A, Page 01, Program 1 for this exercise. The display looks something like this:



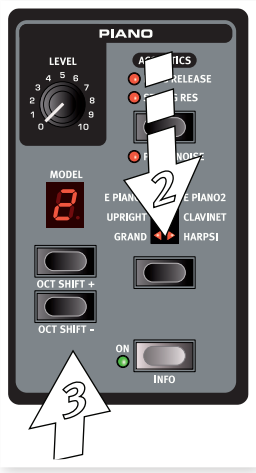
The controls for the Piano instrument are located immediately to the right of the Program/Display area on the panel. Notice that the Grand type is the current type in this program.

Select a new piano sound

- 2 Press repeatedly on the Piano Type selector to browse the 6 types. Each piano type can hold several models.
- 3 Press repeatedly on the Piano Model Up or Down buttons, located beneath the Model LED and play on the keys to listen to the different sounds.

This will cycle through the models that are available in the selected piano type.

Hold Shift and press the Model buttons to transpose the piano one octave up or down.



Changing any parameter on the Nord Piano 2 panel will immediately cause an asterisk to appear next to the current program number in the display.



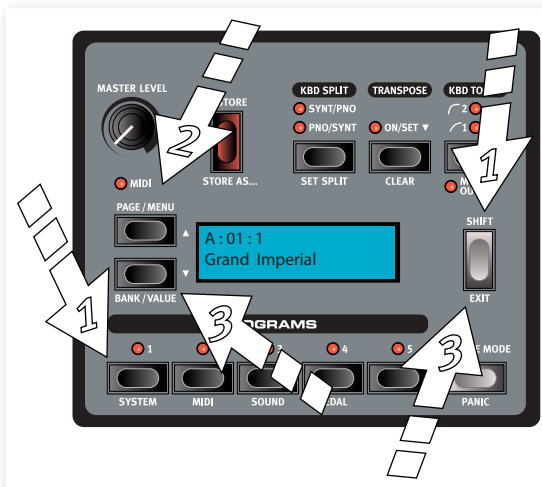
This is provided to you as an indication that the program has been edited/changed, but not yet saved into memory. If you select a new program without performing a Store operation, your edits will be lost and that program will have its original settings the next time you select it.

- 💡 The two banks (A & B) are duplicated when the Nord Piano 2 leaves the factory. This allows you to start storing sounds at once in one of these banks without having to worry that you overwrite something.

Memory Protection

If you are happy with an edit that you have made, you should probably Store the program. Before you can do this, we need to turn off the Memory Protect function.

- 1 Press Shift + Program 1/System to enter the System Menu.
- 2 Use the Up/Down buttons to select the Memory Protect Mode – this is the very first option in the System menu.



- 3 Set the memory protection to Off by pressing and holding Shift and then press the Down button.
- Exit the System menu by pressing the Shift button again.
- 💡 The setting of the memory protection will be remembered even if the Nord Piano 2 is turned off.

Storing a program

Let's store a program.

- 1 Press the Store button once.
- The Store LED starts flashing and the display will give you a visual indication of the location.
- 2 If you want to replace the previous program with your new settings, press the Store button again.
 - 3 If you want to store your new settings in a different location, use the Page and Program buttons to select a new location where you want to store the program.
 - 4 If you want to save the Program in the other Bank, press the Up/Down buttons repeatedly until you reach the next (or previous) Bank.

- 💡 The name of the new destination will be shown in the display. You can also check the sound/settings of that program itself by playing on the Nord Piano 2. This prevents you from overwriting a program that you want to keep.

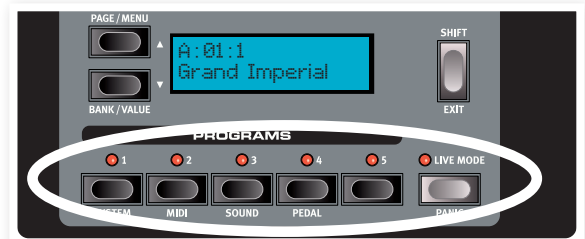
- 5 Press the Store button a second time to confirm your intention.

The edited program has now replaced the previous one in the location you specified.

- 💡 To cancel the storing procedure, press any button except for the Bank, Live Mode or Program buttons.
- 💡 With Memory Protect set to Off, a double tap on the Store button will store a Program in its original location.

Live Mode

The Live Mode can be described as 5 “live program memories”. If you press the Live Mode button to turn Live Mode on, all changes to the panel settings you make will be continuously stored. If you switch the power off, or select another program, the settings you made are still stored in the 5 Live Mode programs, so when you power up next time (or return to that particular Live Mode program) all settings will be exactly as they were when you left them.



If the Live Mode is selected and you decide you wish to store the settings permanently as a program instead, you can do so using the standard methods (see above). You can also store programs into any one of the five Live Mode memory locations, in which case the program settings will replace that current Live Mode memory settings.

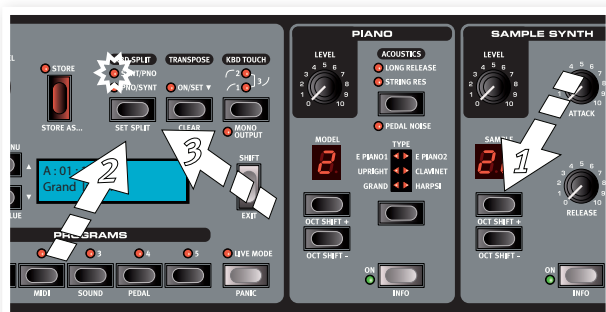
Selecting a Sample Synth sound

- 1 Press the Sample Synth On button. If you are still using the A:01:01 sound, this will add strings in a layer with the Grand piano. The name of the sample will be shown in the display.
- 2 Press repeatedly on the Up or Down buttons in the Synth section to listen to the various samples that are in the Nord Piano 2's factory sounds.
- 3 You can adjust the level of the Sample Synth with the Level knob.



Split the keyboard

- 1 Locate a bass sample with the sample buttons, they are among the last samples in the sample memory.
- 2 Press the Kbd Split button to activate a keyboard split.



This allows you to play one instrument to the left of the split and the other instrument to the right.

- 3 To switch the Piano from the left to the right hand side, press the Kbd Split button again. The LED will indicate the split arrangement.

The split can be set by you and stored for every individual Program, read more on how to do this on page 15.

Transpose

Press and hold the Transpose button and use the Up and Down buttons to transpose the Nord Piano 2 in semitone steps. The range is +/- 6 semitones.

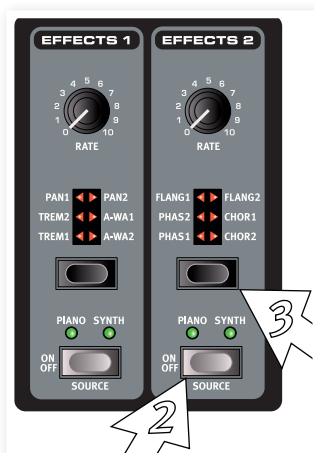
- ❗ The pianos have a finite note range, read more about this on page 15.

Adding effects

- 1 Select the first program again - A:01:1.
- 2 Turn on Effect 2 (the On LED should light up) by pressing once on the Source button.
- 3 Press repeatedly on the Effect 2 selector.

The effect options are indicated with the selector LEDs and changes in a cyclical, fashion each time the selector is pressed.

Some of the effects have three options that indicate the depth of the effect. Flang 1 is the shallowest version, Flang 2 is a more pronounced effect and when both Flang 1 and Flang 2 LEDs are lit, you have selected the most dramatic flanger effect.



- 💡 If you double-tap on the Source button, the instrument that is routed to the effect will change.

- 4 Turn the Effect Rate knob.
This changes the rate of the active effect.
- 5 Hold Shift and press repeatedly on the effect selector.
This allows you to reverse through the effect selections.

- 6 Turn off the effect.

If you continue to press on the effect selector after the effect is turned off, the effect setting will change even though the effect is not active.

- 💡 This method can be used to select a certain effect while playing, without affecting the sound until you actually turn on the effect.

Use the delay

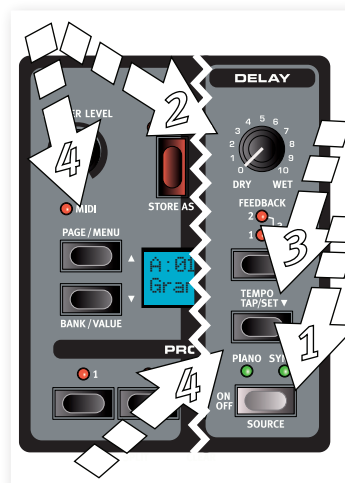
- 1 Press the Delay Source button to activate the delay and make sure it is routed to the instrument that you are playing on the keyboard.

- 💡 Hold Shift and press Source again to route the other instrument to the delay.

- 2 Adjust the mix of the dry and the wet signal by turning the Delay knob.

- 3 Tap repeatedly on the Tempo/Tap Set button to set the delay time in sync with your tapping.

- 4 Press and hold the Tempo button, and adjust the delay time with the Up/Down buttons to the left of the display. The display will show the delay time in milliseconds.



Acoustics

- ① Turn off the Sample Synth and select a Grand piano by pressing the Piano Type selector.
- ② Press the Acoustics button to turn on the String Resonance functionality if it is not active already.
- ③ Play and hold a chord with your left hand, and while the sound decays, play some staccato notes with your right hand. You can hear that some of the new notes excites the held notes, making them “ring” in a sympathetic resonance.

String Resonance is the acoustic phenomenon that occurs when strings, resonate at their fundamental or harmonic frequencies when other strings are played.

When this functionality is turned on, all notes you play will affect each other to reproduce the wonderful acoustics that occurs inside an acoustic grand or upright piano.

- ④ Press and hold the Shift button and press the Acoustics button to turn on the Pedal Noise feature.
- ⑤ Without playing any notes, step on the Nord Triple Pedal with various intensities. You can hear the pedal noise and how it changes according to the force.

By activating this, the mechanical noise that occurs when you operate the sustain pedal on a acoustic or electric piano will be recreated. The Nord Triple Pedal is dynamic, you can control the level of the noise by the force you use when you operate the sustain pedal.

Kbd Touch settings

The Nord Piano 2 is equipped with three additional Kbd Touch settings.

Some of the piano instruments in the Nord Piano 2 have very wide dynamic ranges by nature and we wanted to capture this as accurately as possible.

However, If you want the piano sounds to respond differently to keyboard velocity, you can set this with the Kbd Touch feature.

When the LEDs are off, the default setting is active. Should you wish to reach the maximum velocity with less effort, press the Kbd Touch button so that the “1” LED is lit. If you press the button again, the “2” LED will be lit, making it even easier to reach the maximum velocity level.

The third setting is quite the opposite, it will require more effort to reach the maximum velocity. This may suit those of you with a harder playing style. This setting can also be useful if you need more expressiveness when playing with softer velocities.

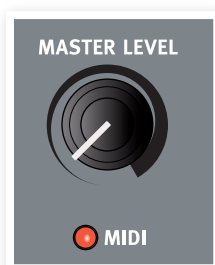
This finishes our little tour; we hope that you now have the initial knowledge on how to operate most of the functions on the panel. The following chapter contains the reference section, with the chapter on the Nord Sound Manager application after that, on page 21.

6 Nord Piano 2 Reference

Master level

This control sets the overall output level of the Nord Piano 2, at the L/R and the head-phone outputs.

i This is not a programmable control.



MIDI Indicator

The MIDI indicator below the Master Level is a LED that flashes when MIDI data is received. Short flashes indicate any incoming MIDI, longer flashes indicates accepted MIDI data (on the correct MIDI channel etc.).

Program section



This is the section where you select the banks and programs, where the Store functions are activated and where you enter the System, MIDI, Sound and Pedal menus to change these settings.

Up/Down buttons

The Up/Down buttons to the left of the display have several functions in the Nord Piano 2. Press repeatedly to select one of the 24 Pages in each Bank; the Bank, Page and Program number and the name of the program will be presented in the display.

Bank selection

Hold Shift and press Up or Down to select Bank A or Bank B.

Menus

If you have entered any of the System, MIDI, Sound or Pedal menu, these buttons are first used to select a menu function, and then together with the Shift button to change the value of a selected function. Read more about the menus on page 19.

Display

The LCD will show the active program location and the name of the program. If you edit a program, an asterisk will appear next to the program number, at the upper row of the display.

If you have entered any of the menus, the setting for each menu item is shown in the LCD.

The LCD will also display values and settings when you change any of the functions on the panel. Press and hold Shift while turning a knob to display the value without changing it.

Store

The red Store button is used when you want to store the settings that you have made, in Programs.



- 1 Press the Store button once and the Store LED will start to flash.

The display will ask you for a location where to store your new program - the first option is at the original location.

- 2 Select the desired location with the Up/Down and the Program 1-5 buttons. Skip this step if you want to overwrite the original.

💡 When you select a new location, the name of the program currently in the destination will be displayed and the settings will also become active on the Nord Piano 2. This allows you to verify that you will not overwrite something important.

- 3 Press Store again to confirm your intentions and to store the current settings to the selected location.

If you change your mind, press any button except the Up/Down or the Program buttons on the Nord Piano 2 panel to abort the store procedure.

Store As...

Use the Store As feature when you want to store a program with another name.

- 1 Press Shift + Store.
The display will show "Set Name" and the current name of the program on the lower row.
- 2 Use the Up/Down buttons to select the position, press and hold Shift and use the Up/Down buttons to select the character.
The display can show 11 characters of a program name.
- 3 Confirm your intentions by pressing Store once more.

This procedure may be aborted by pressing the Shift button.

i In order to be able to store settings the Memory Protection must be turned off. Read more about this on page 11.

Programs 1 ~ 5



Use the Program buttons to select the individual programs in a bank or in the Live Mode.

By pressing Shift and program buttons 1 to 4, you'll enter the menus. Read more about this on page 19.

Shift

A few buttons on the Nord Piano 2 panel have a second function, which is indicated by a descriptive text printed below the button. You access these additional functions by holding Shift while pressing a button.



Live Mode

If you press the Live Mode button, all changes to the panel settings you make will be continuously saved in the currently active "Live Program". If you switch the power off, or select another program, the settings are still stored in the Live memory, so when you power up next time (or return to the Live memory) all settings will be exactly as you left them. The Live Mode has 5 programs, which are selected with the Program buttons.

If the Live memory is selected and you decide you wish to store the settings permanently as a program you can do so using the standard Store methods (see above). You can also store programs into the Live memory location, in which case the program settings will replace the current Live memory settings.

Panic

If notes gets stuck and sound indefinitely during a MIDI- or live performance, you can press Shift together with the Live Mode button in order to force every note to stop sounding and to reset any performance controllers.

Kbd Split

The keyboard on the Nord Piano 2 can be split in two areas; this is done by pressing the Kbd Split button.

Synt/Pno

This indicates a split keyboard, with the synth to the left of the split and the piano to the right.

Pno/Synt

This indicates a split keyboard, with the synth to the right of the split and the piano to the left.

For a layered performance, just activate both instruments with the respective On/Off buttons.

Set Split

Hold Shift and the Kbd Split button to see the current split and press a key on the keyboard to set a new split point.

Use keyboard
Split point: C3

The key you press will be the first key of the upper area.

Keyboard Split
Position: C4

Transpose

The Transpose functionality makes it possible to alter the pitch of the Nord Piano 2 in semi-tone steps. This can be very useful if you want to "play" in one key, and have the Nord Piano 2 "sound" in another. A setting that you make with this function will be stored within a program.



- 1 Press and hold the Transpose button.
- 2 Set the desired transposition by pressing the Up or Down buttons.

The display will indicate the transposition value. The Active LED will be lit.

- 3 Press the Transpose button again to turn it off. The transposition setting will be retained even when the function is turned off.

This transposition will also affect the MIDI output from the Nord Piano 2.

In the System Menu, there is a global transpose that will affect all programs and all sounds in the Nord Piano 2, but not the MIDI output. Read more about this on page 14.

The piano and sampled sounds have a finite range. It is therefore possible to set the Transpose and/or the Global Transpose to values that will make keys at the top of the Nord Piano 2 keyboard silent.

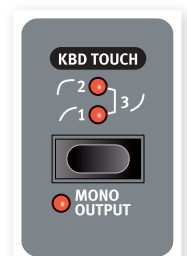
Transpose Clear

Hold Shift and press the Transpose button to clear a transpose setting.

Kbd Touch

By activating the Kbd Touch feature, you can select different response curves. These makes the Nord Piano 2 react differently to the velocity you use on the keyboard.

When all LEDs are off, the default response curve is active. A Kbd Touch setting of 1 makes it a bit easier to reach the maximum, a setting of 2 is even easier. The third setting is quite the opposite, it will require more effort to reach the maximum velocity.



Mono Output

If you press Shift + Kbd Touch, the stereo sound will be played back in mono instead. Connect the L or the R output on the Nord Piano 2 to an input on the sound system you wish to use.

This is a global setting and will affect the entire Nord Piano 2. The Mono functionality will be reset if the Nord Piano 2 is turned off.

Piano

The Pianos in the Nord Piano 2 is organized into six types; each type can contain several instrument models. You can freely add new piano instruments via USB using the Nord Sound Manager utility (read about the Manager on page 21).

Right out of the box, Nord Piano 2 features a fine collection of carefully selected acoustic and electric pianos and harpsichords. A lot of effort was made to ensure that the response and sound of the instruments matches every nuance of the source instrument. Each piano have been multi-sampled in a vast amount of velocity levels. That's one reason why they all sound and feel so authentic.



Level

Use the Level knob to set the volume of the selected piano sound. The setting of this function is stored in the Programs.

Acoustics

The Acoustics features allow you to add certain acoustic and mechanical components to the sounds.

String Resonance

String Resonance is the acoustic phenomenon that occurs when strings, or parts of strings, resonate at their fundamental or harmonic frequencies when other strings are played.

When this functionality is turned on, all notes you play will affect each other to reproduce the wonderful acoustics that occurs inside an acoustic grand or upright piano.

You will also hear all the strings resonate if you press the sustain pedal and play some notes.

Press the String Resonance button repeatedly to toggle the String Resonance on or off. The String Resonance LED will be lit when the function is active.

i If a piano is selected that isn't compatible with the Strings Resonance feature, this function will be disabled. This applies to for example the small (Sm) versions of the grand pianos and uprights.

Long Release

Activating Long Release will add a slightly longer release to an acoustic or electric piano. This is equivalent to what happens when you adjust the damper tension in an acoustic or an electromechanical instrument.

i If a piano is selected that isn't compatible with the Long Release feature, this function will be disabled. Long Release compatible pianos are of version 5.3 or later.

Pedal Noise

The third Acoustics feature is the Pedal Noise. By activating this, you will recreate the mechanical noise that happens when you operate the sustain pedal on an acoustic or electric piano. The Nord Triple Pedal

is dynamic, you can control the level of the noise by the force you use when you operate the sustain pedal.

Hold Shift, while pressing on the String Resonance button to turn this feature on or off.

i If a piano is selected that isn't compatible with the Pedal Noise feature, this function will be disabled.

Piano Type

Use the Piano Type selector to choose which piano sound you want to use. Each type may consist of several models; press repeatedly on the model selector to cycle through the models within a selected type.

Type	Description
Grand	Acoustic & Electric grand pianos
Upright	Upright pianos
E Piano 1	Electric Pianos, tine based
E Piano 2	Electric Pianos, reed based
Clavinet	Clavinet
Harpsi	Harpsichords

i The type of a piano has been set by a field mouse named Gerald at the Nord HQ. You cannot move a piano from one type to another.

Piano Model

Each Piano Type can contain several Piano Models, depending on the content of the memory in the Nord Piano 2.

1 Press repeatedly on the Model buttons to select the desired sound within the active Type.

The number of the model will be indicated in the LED display, and the name of the model will be shown in the display's second row.

2 Press Shift and the Type button to see the name and version number of the active piano in the display.

i A Flashing hyphen in the Piano Model section indicates that the piano sound that the current Program tried to use is not available in the Flash memory. Select another program, another piano or download the missing piano to the Nord Piano 2.

⚠ In the unlikely event that the data of a sound in the Flash memory is damaged, this will be indicated with a message in the LCD when the Nord Piano 2 is powered up. The Type and Model LEDs will flash for this particular sound if a program that uses it is selected. Connect the unit to the Sound Manager to delete and then reload the piano.

Clavinet Models

On an original Clavinet D6 you can select different pick-up combinations by pressing a number of rocker switches. This functionality is very faithfully reproduced in the Nord Piano 2, you get all the original Clavinet D6 pickup selections by pressing the Model button when the Clavinet is the selected Type.

Clavinet Pick-up Type Description

Clav Model A: Only the “neck” pick-up; a warmer, less bright sound.
 Clav Model B: Only the “bridge” pick-up; a bright sound.
 Clav Model C: Both pick-ups on and in phase; a very full sound.
 Clav Model D: Both pick-ups 180 degrees out of phase; the fundamental is almost cancelled out and the sound becomes thin.

Piano Octave Shift

The Model buttons can be used together with the Shift button to transpose the piano sound in octave steps.

On

Press the On button to turn the Piano on or off.

Info

Hold Shift and press the On button to see the name of the current piano in the LCD.

Sample Synth

The Sample Synth allows you to use samples from the extensive Nord Sample Library in the Nord Piano 2. The Piano 2 is delivered with a selection of samples. Additional samples can be found on the DVD that accompanies the unit or from the www.nordkeyboards.com website.

Every sample in the unit can be replaced, this is done by using the Nord Sound Manager.



Level

Use the Level knob to set the volume of the selected synth sample sound.

Attack

When you strike a key, the sample synth may or may not begin to sound at once. The actual volume of the sound can be made to be gradually faded in with the Attack function on the Nord Piano 2. Turning the Attack knob clockwise allows you to increase the attack time, which makes the volume of the sound to be gradually increased.

When the Attack knob is turned fully counter-clockwise, the sound will be played back without any additional attack. When turned fully clockwise, the attack time will be 45 seconds.

- Some samples have a slow attack in the actual waveform, this cannot be shortened by adjusting this parameter.

Release

When you release a key, the sound of the sample synth may or may not be silenced at once. The actual sound can be made to be gradually faded out with the Release function on the Nord Piano 2. Increasing the release time by turning the Release knob clockwise makes the sound longer, it will gradually decay after you have released the keys.

When the Release knob is turned fully counter-clockwise, the sound will play back without any additional release. When turned fully clockwise, the release time will be 45 seconds.

On

Press the On button to turn the Sample Synth on or off.

Info

Hold Shift and press the On button to see the name of the current sample in the LCD.

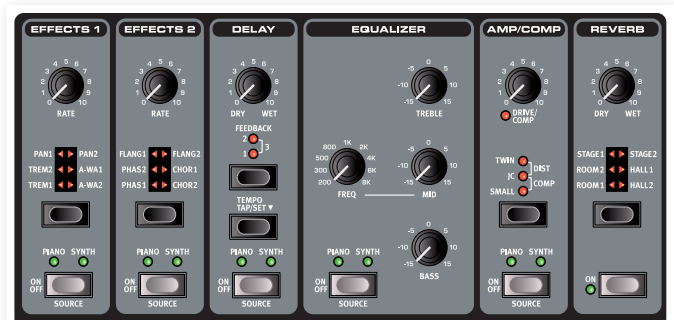
Sample

Press repeatedly on the Sample up/down buttons to select a sample. The number will be shown in the LED and the name of the selected sample will be shown in the display.

Sample Octave Shift

The Sample selector buttons can be used together with the Shift button to transpose the Sample Synth sound in octave steps.

Effects



The Effects section of Nord Piano 2 can be used to process the pianos and the samples. It is programmable and you can configure your effects separately for each and every program. Some of the effects are mono in/Mono out and some are stereo in/stereo out. For each individual effect the channel configuration is stated in the related text.

The Source buttons turn the effect on or off and is used to select the instrument that will be affected by that particular effect. A double-tap on a source button will select the next source. The Piano or Synth LED will be lit when the Effect is active.

The Effect Selectors is used to cycle through the various effects and/or effect depths.

Press and hold Shift and press an Effect selector to cycle through the effects in a counter clockwise fashion.

You can use the Effect Selector to select an effect without it being turned on, in order to prepare a setting in advance during a performance.

The Rate knobs changes the rate of the effect.

- A numerical value of the rate will be shown in the display.

Effect 1

Effect 1 offers three different types of effects: Tremolo, Auto-Panning, and 2 types of Wah-Wah.

The tremolo and the auto-panning have 3 selectable depths. Pan1 is less dramatic than Pan2, and Pan 3 (both Pan LEDs lit) is the most dramatic.

Tremolo is a volume modulation that continuously varies the signal volume. Tremolo is a commonly used effect, especially for electric pianos. The Tremolo effect is stereo in/stereo out.

Rate range: 0 - 10.5 Hz.

The **Pan** effect is an automatic panning modulation that smoothly moves the signal between the left and right outputs in the stereo panorama. The Pan effect is stereo in/stereo out.

Rate range: 0 - 10.5 Hz.

The **A-Wa** is a wah-effect where a lowpass filter sweeps across the frequency range, and is controlled by the volume of the signal. This means that you can use the velocity on the keyboard to control the amount of “Quack!” in the sound. The Rate knob sets the frequency range of the sweep.

A-Wa1 has a nice, mellow sound. A-Wa2 reacts a bit faster and gives you a brighter, more distinct character.

The Wah effects are stereo in/stereo out.

Effect 2

Effect 2 offers three types of modulation effects: Phaser, Flanger and Chorus.

Each of these effects has 3 selectable depths in the same fashion as the tremolo and pan in the Effects 1 section. The Rate knob control the rate of the effect.

The **Flanger** produces a characteristic comb filter effect. The Flanger effect is stereo in/stereo out.

Rate range: 0 - 10.5 Hz.

The **Phaser** effect produces a characteristic “sweep” effect commonly used with electric piano sounds. The phaser effect is stereo in/stereo out.

Rate range: 0 - 10.5 Hz.

The **Chorus** effect simulates having several slightly de-tuned signals. The Chorus is stereo in/stereo out.

Rate range: 0 - 2.7 Hz.

Delay

The delay allows you to add echo effects. The delay time can be set between 20 and 750 milliseconds. The delay effect is stereo in/stereo out.

Dry/Wet

The Dry/Wet knob sets the balance between the dry, unprocessed signal and the wet, processed signal.

Feedback

The Feedback is the number of repeats. There are four available settings, indicated by the LEDs. Press the Feedback button repeatedly to select a setting.

Tempo Tap/Set

Tap the Tempo button to set a delay time. Pressing and holding the Tap/Set button allows you to set a delay time using the Up/Down buttons to the left of the Display.

💡 *If the Delay Mode in the Sound Menu is set to “Analog”, the pitch of the repeats will change if you change the tempo with the Up/Down buttons. If you set the tempo by tapping, this pitch change will not occur.*

Equalizer

The Nord Piano 2 has a 3-band EQ with treble, bass and a sweep-able midrange (4 kHz, 100 Hz and 200 Hz ~ 8 kHz). The frequencies can be boosted/attenuated with +/- 15 dB. The EQ is stereo in, stereo out.

Amp/Comp

This section contains the speaker/amp emulations and a compressor.

Small, JC and Twin emulates three different kinds of amplifier and speaker cabinets. The **Dist** is a tube distortion effect without any speaker emulation. The amount of drive is controlled by the Speaker/Comp knob.

The Small, JC and Twin effects are mono in/mono out, the Dist effect is stereo in/stereo out.

Comp is a compressor that will even out the dynamics of what you play, making low level sounds louder and high level sounds lower in volume. This produces a tight, punchy sound and makes the overall level easier to control in a live mix situation. The compressor is stereo in/stereo out.

When this effect is active, the Drive/Comp knob controls the amount of compression applied.

Reverb

The Reverb section simulates the natural sound reflections in various acoustic environments. You can choose between six reverb types with various lengths and densities, indicated by the LEDs in the selector.

The Stage “1” is a softer version, the Stage “2” is a brighter version, etc.. The reverb effect is stereo in/stereo out.

The Dry/Wet knob sets the balance between the unprocessed and the processed signal.

7 The Menus

Any settings that you change in the System, MIDI, Sound or Pedal menus will take immediate effect on a global basis, and the settings will be stored until you change them the next time. Enter the menus by pressing and holding Shift and the System, MIDI, Sound or Pedal button (program buttons 1 to 4). Select a function with the Up/Down buttons and change the setting by pressing and holding Shift and the Up or Down button. Exit the menus by pressing a second time on the program buttons or on the Shift/Exit button.

i There is one exception, one menu setting that doesn't get automatically stored when you power off the Piano 2, and this is the MIDI Local On/Off setting. This always reverts to Local On every time the Nord Piano 2 is powered up.

System Menu

Memory Protect – On, Off

This is set to "On" when the Nord Piano 2 leaves the factory, meaning that you (or the drummer in the band) cannot store any changes to the programs. Set this to Off when you wish to store your own programs. The System, MIDI or Sound menu settings and the Live memory are not protected by this setting.

Range: On (default), Off

Fine Tune

This allows you to fine tune the pitch of the Nord Piano 2.

Range: +/- 50 cent (default = 0).

Global Transpose

This allows you to transpose the entire Nord Piano 2 in semitone steps. Any setting you make here will be added to the panel transpose that may be saved with the programs.

Range: +/- 6 semitones (default = 0).

MIDI Menu

MIDI Channel

This sets the MIDI Channel that the Nord Piano 2 transmits and responds to. Use the USB channel settings if you want to transmit and receive keyboard and panel MIDI messages via the USB interface.

Range: 1-16, USB1 - USB16, Off (default = USB 1)

Local Control

This allows you to set if the Nord Piano 2 keyboard and front panel controls should control internal Programs or only send note and controller messages via MIDI. Local On is the normal "mode". In Local Off mode, the front panel and keyboard action are transmitted via MIDI only and does not control the internal sound(s) directly.

Range: On (default), Off

i Local defaults back to Local On every time the Nord Piano 2 is powered on.

Control Change (CC) Mode

This setting specifies how the front panel's knobs and buttons are handled in the MIDI communication with MIDI Control Change messages. You can select if the panel controls should either send or receive, or both or if Control Change messages should be ignored.

Range: Send/Recv (default), Receive, Send, Off

Program Change Mode

Specifies how the Nord Piano 2 should handle MIDI Program Change messages.

Range: Send/Recv (default), Receive, Send, Off

Send CC

You can send a package of all the active Program's parameters as MIDI Control Change messages. Press the Store button to begin the transmission.

Dump Program One, All

This allows you to perform a MIDI Sys Ex dump of the currently selected Program or of all the programs in the Nord Piano 2. Press the Store button to perform the transmission.

In the MIDI chapter on page 32 is a description on how the Nord Piano 2 receives a Sys Ex dump.

Sound Menu

Piano Pedal Noise level

Sets the level of the Pedal Noise that can be turned on for selected pianos.

Range: +/- 6 dB (0 dB default)

Piano String Res Level

Sets the level of the String Resonance feature that can be turned on for selected acoustic pianos.

Range: +/- 6 dB (0 dB default)

FX Delay Mode

This sets if the delay should change the pitch on sounding repeats in the fashion of an analog delay, if the Tempo is adjusted with the Up/Down buttons. When set to Normal, the pitch does not change if the Rate/Tempo is changed with the buttons.

Range: Analog (Default), Normal.

Pedal Menu

Piano Pedal

Select the functionality of the sustain pedal you have attached to the Nord Piano 2. If you are unable to use the included Nord Triple Pedal, you can still achieve parts of the functionality with another pedal. The default Auto setting tries to determine what type of pedal you have connected.

If you have a switch pedal type of another brand (Roland DP-2, DP-6, Yamaha FC-4, M-Audio etc.), select the Sw.Open or Sw.Close option, depending on the polarity of the pedal.

Type: Auto (default), Triple, Closed, Open

Volume Pedal Type

Select the type of the pedal you have attached to the Volume Pedal input on the Nord Piano 2. The range of a connected pedal will be shown in the display if you operate the pedal. This can help you match the performance of a pedal that isn't directly available in this menu.

Type: Roland EV5 (default), Roland EV7, Yamaha FC7, Korg, Fatar SL

Volume Pedal Func

Select the destination of the pedal you have attached to the Volume Pedal input on the Nord Piano 2.

You can use a pedal to control the volume of the entire instrument or just the Sample Synth, to be able to fade in for example strings or pads on top of the pianos.

Func: Volume (default), Syn Volume

Sostenuto Pedal Func

The Sostenuto pedal can be set to three different functionalities, Sostenuto, Syn Sustain and SynSustGate.

Sostenuto will only sustain those keys that were held down when this pedal was pressed down.

The Syn Sustain mode allows you to have separate control of the sustain for the Sample Synth and the Pianos.

The SynSustGate mode will allow the middle pedal to sustain the synth and also remove any keyboard information, making it possible to latch notes played by the Sample Synth, while still being able to continue to perform with the Piano (and the normal sustain pedal).

⚠ *If a switch-type pedal is used instead of a Nord Triple Pedal, the Sample Synth sustain functionality will revert to the sustain pedal.*

Func: Sostenuto (default), Syn Sustain, SynSustGate

8 Nord Sound Manager

The Nord Sound Manager is the application that allows you to organize the various memory areas, the partitions in the Nord Piano 2. It is also used to download pianos, samples or programs to the Nord Piano 2 or to upload any of these items - called sounds - from the instrument's memory to the computer hard drive. The Nord Sound Manager provides access to various methods to download the sounds to the unit and a function to backup and restore the entire Nord Piano 2 content.

System requirements

The Nord Sound Manager is compatible with computers running Mac OSX 10.4 or later, Windows XP, Windows 7 and Windows Vista. If you run the Nord Sound Manager on a Windows computer, you also need a Clavia USB Driver of version 3.0 or later installed.

Installation

USB Driver

i *Mac OSX users may skip this section.*

The USB driver can be installed automatically if the computer is connected to the internet when the Nord unit is connected to it. You can then allow Windows to search for the driver. Here is how to make a manual driver installation:

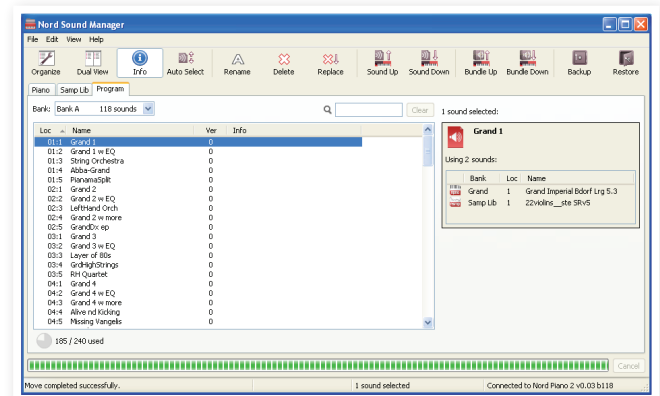
- ① If you use a Windows computer (XP, Vista or W7), locate the Clavia USB Driver v3.x Setup.exe on the DVD that accompanies the unit and double click on this file.
- ② Follow the instructions on the screen.
- ③ After the files have been installed, the driver will be activated when you connect the Nord unit. Do this by connecting a USB cable between the Nord instrument and your computer.
- ④ When the Nord unit is connected to the computer, the driver will be automatically activated and a confirmation will appear in the notification area in the Windows task bar.

Sound Manager

- ① **Windows users:** Open the Nord Sound Manager folder on the DVD, launch the "Nord Sound Manager v6.x Setup.exe" and follow the instructions carefully. The Nord Sound Manager can be accessed from the start menu when the installation procedure is finished.
- ② **Mac OSX users:** Open the Nord Sound Manager folder on the DVD, double-click on the "Nord Sound Manager 6.x.dmg" and then drag the Nord Sound Manager application from the virtual hard drive to your "Applications" folder.

⚠ *The files mentioned for the driver and application installations can also be downloaded from the www.nordkeyboards.com website. Please visit our website from time to time to check for any Sound Manager updates.*

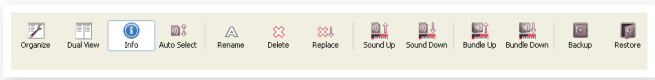
Overview



You can work with the contents of the Piano, Sample and Program partitions. These are accessed from the tabs, conveniently labeled Piano, Samp Lib and Programs.

- i** *If a Nord Piano 2 is not connected to the computer, pages, icons and memory locations will be grayed out.*
- ⚠** *The actions that take place in the Nord Sound Manager will affect the memory in the Nord Piano 2. The Manager is on-line with a connected Nord Piano 2 at all times; any changes that you perform in the Manager will immediately be executed in the Nord Piano 2. If you e.g. delete a piano or a Program from the list in the Nord Sound Manager, that sound will be deleted from the Nord Piano 2 memory.*

The Toolbar



The Toolbar gives you direct access to some of the more frequently used functions in the Nord Sound Manager. Clicking on an icon will activate one of these functions, and a dialogue will often appear asking for confirmation or further instructions from you.

The Tabs



Select the memory area (partition) that you wish to work in with the Tabs. The Piano and Sample tabs allows you to change the content of the piano and sample partitions and the Program tab allows you to organize the programs. The pianos, samples or programs will be referred to as “sounds” in this manual and in the application itself.

Press Ctrl+Tab on the computer keyboard to cycle between the tabs.

The lists can be ordered according to location, name, size, version and date, in ascending and descending order. Just click on a headline to select a preferred view.

Partition Memory Indicator



The memory indicator at the bottom of the window indicates how much memory is being used in the selected partition. The dark area shows the used memory, the bright indicates space that is available for new sounds.

Right/Ctrl-Clicking

If you right/Ctrl-click on a sound, a context menu will provide the following options, depending on what type of sound you selected.

Select in Instrument

This will select the chosen sound in the Nord Piano 2.

Upload

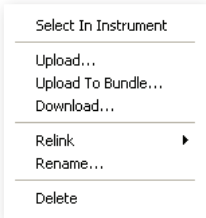
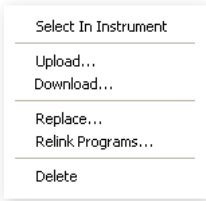
This will upload the selected sound from the Nord Piano 2 to the computer hard drive to a folder of your choice.

Upload to Bundle (Programs)

This will upload the selected program(s) and any piano and/or sample that this program uses, to a Program Bundle file on the hard drive. Bundles are explained in greater detail on page 24.

Download

This is only available if you right-click on an empty location that does not contain a sound. This allows you to choose a file on the hard drive, to be downloaded to the location in the Nord Piano 2.



Replace (Pianos & Samples)

This feature makes it possible to replace a piano or a sample in the unit with another piano or sample from your hard drive. The process will update all the programs that used the former piano/sample, to use the new one after the replacement has been carried out.

Relink (Programs)

Use the Relink feature if you want one or several selected programs to use another piano or sample instead of the current sound. The sound in question have to be present in the memory of the Nord Piano 2. Relinking can also be used if a piano or sample is absent in the Nord Piano 2, to repair the programs that are missing a component.

Rename

This allows you to rename, and assign a category to a Program. Characters supported are: a-z, A-Z, 0-9 and a hyphen (-). The name can contain up to 16 characters. Any other characters will not be displayed in the Sound Manager lists.

Pianos and samples cannot be renamed, this option will not be available if you right-click on any of these.

Delete

This will delete the selected sound(s) from the Nord Piano 2 memory.

File Formats

The Nord Sound Manager creates and/or uses files together with the Nord Piano 2, that has the following extensions:

Type	Description
.npno	These are the piano files from the Nord Piano Library.
.nsmp	These are the sample files from the Nord Sample Library.
.np2p	These are the Nord Piano 2 Program files.
.np2b	This is the extension used for the Nord Piano 2 Backup files.
.np2pb	This is the extension used for the Nord Piano 2 Program Bundle files.

The Nord Piano 2 is only compatible with piano files of version 5 or later.

Just as any other computer file on your hard drive, these files may be renamed, emailed, copied, moved, lost or even stored in a safe location if an evil computer crash suddenly decides to take your hard drive for a ride.

The Quick Tour

Let's get acquainted with some of the functions in the Nord Sound Manager. If you do the actions described in this tour, the content in the Nord Piano 2 may be changed, but you can always get back to the factory content by restoring the unit with the Factory Backup file that is available on the DVD that was delivered in the box with the instrument.

Backing up and restoring will be explained at the end of this tour, on page 26. If you have made some changes to the content of the Nord Piano 2 already, now would be a great time to do a Backup.

Transfer sounds to the Nord Piano 2

When the Nord Piano 2 leaves the factory, the Piano and the Samp Lib partitions are filled with sounds. In order to be able to try out other pianos, you can delete one or two pianos and load new ones and select this from the panel.

Deleting a sound

- 1 Open the appropriate Tab and select a piano or a sample to delete and press the Delete icon in the toolbar.

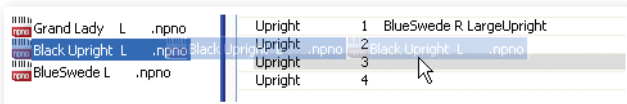
You can also right-click on the sound and choose the Delete option or use the backspace or delete keys on the computer keyboard.

A dialog appears where you will be asked to confirm your intentions. If any programs uses the soon-to-be deleted piano (or sample), you will be alerted about this. If you confirm by clicking Yes, the sound in the Nord Piano 2 will be deleted.

If you delete a piano or sample that is used by any programs, these programs will then be missing an important part. This can be fixed by reloading the same sound at a later time.

Download a new sound

- 1 **Using drag and drop:** Open the folder on the computer hard drive where the new sound is located.
- 2 Make sure that the Sound Manager window and the folder are visible on the screen.
- 3 Drag the new sound to the white area in the Sound Manager list. When the cursor gets a plus-sign, release the mouse button.



- 4 The Clean Deleted Space process will start to prepare the memory and then the new piano will be downloaded to the Nord Piano 2. If there isn't enough free space to complete the operation, a message about this will appear.

If the Organize view is active, you can drop a sound on any free location in the bank. If this is not active, the new sound will be automatically placed at the first free location in the bank.

i The pianos are categorized and can only be added to the bank they belong to; electric pianos cannot be added to the grand bank, grand's cannot be dropped in the clavinet bank etc. Samples can only be added to the Samp Lib partition.

- 1 **Adding a sound using the Toolbar or Menu command:** Click on the Sound Down icon in the toolbar. The same command is also available in the File menu: Sound Download (Ctrl-D).
- 2 Browse to the folder on the hard drive where the desired sound is located, select it and click Open. The sound will now be added to its bank at the first free location.

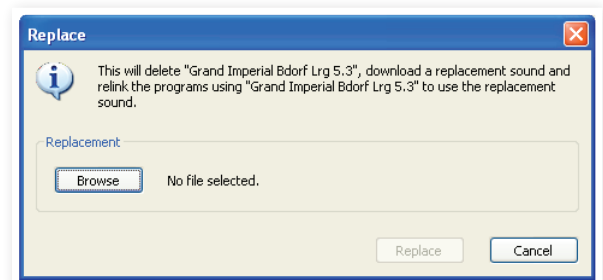
Replace

You can also use the Replace functionality. This action replaces a piano in the Nord Piano 2 with one that you want use from the DVD or one that you have downloaded from the www.nordkeyboards.com website.

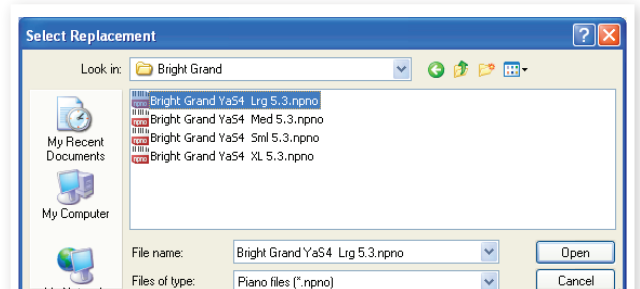
Replacing a piano with another will automatically update all the Programs that used the previous piano to use the new piano instead.

- 1 Open the Piano tab. The current content of the piano partition in the Nord Piano 2 will be displayed.
- 2 Select a piano in the list that you wish to replace with a new one and click the Replace icon in the toolbar.

You can also right-click the sound and choose the Replace option or use the Replace command in the Edit Menu.



The Replace dialog informs you about the action about to take place. Click Browse to locate a new sound on the computer hard drive. The Bright Grand is chosen in the image below.



- 3 Press Open and then confirm by clicking Replace.

The replacing action will begin by deleting the original piano, then cleaning the memory, downloading the new piano and finally relinking all the programs to use the new one instead.

If you use Replace to try a piano and then change your mind, just replace the new one with the previous one to get back to where you started from.

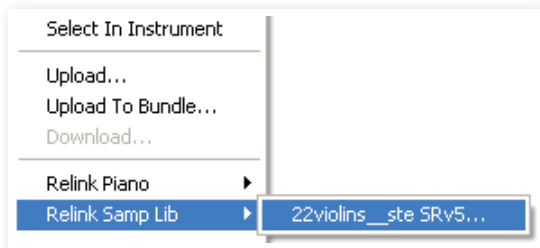
The Replace action can be done with samples as well.

Relink

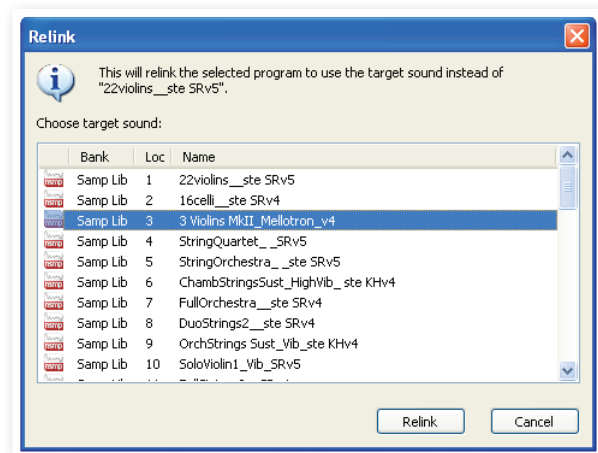
Relink is a powerful feature that makes it possible to change the piano or sample (or both) that one or several programs use. Let's imagine that you have downloaded a new favorite grand piano and want to change the programs that used your previous favorite grand, to the new one instead. Instead of manually changing every program on the unit, Relink can achieve this in the Manager.

Let's Relink a program, to change what sound(s) the program should use.

- 1 Open the Program tab and right-click a program in the list.
- 2 Select the Relink Samo Lib option in the context menu. The menu will expand to show the sample that is linked to this program.



- 3 Select the sample and let go of the mouse button. This will open the Relink dialog where you can choose the new sound that the program should use instead.



- 4 Click Relink to relink the program to the new sound.
- i** You can only Relink programs to a sound that is already present in the Nord Piano 2.

Download Queue

You can add several sounds, one by one, using the drop method, or with the Toolbar or Menu commands. These sounds will be put in the download queue. The memory will be cleaned if needed and the files will be downloaded to the instrument in the order they were added to the queue.

- 1 Select the desired partition that holds the type of sounds that you wish to load.
- 2 Drag a sound from the computer hard drive to the white area in the Sound Manager list.
- 3 Drag another sound to the white area in the Sound Manager list.

E.Piano	1	E.Piano 1 Mk I Low Deep 5.1	6.2 MB	Downloading... (17%)
E.Piano	2	E.Piano 2 Mk I ClosIdeal 5.1	5.9 MB	Queued
E.Piano	3	E.Piano 3 Mk II Shallow 5.1	6.8 MB	Queued
E.Piano	4	E.Piano 4 FDS Bright Times CustomMod 5.1	14.8 MB	5.10

Files that are placed in the queue will be displayed in bold.

- 4 If you wish to cancel an ongoing queue, you can either delete all files that are queued or press the Cancel button. During the Clean process the Cancel option is not available.

Files waiting in the queue can be deleted from the queue if you change your mind. Right-click on the queued sound or use the Toolbar or Menu Delete command.

i Files already in the unit can be moved or deleted during the processing of the queue.

Upload sounds from the Nord Piano 2

- 1 Select the desired partition that holds the sounds that you wish to store on the computer hard drive.
- 2 Select the bank and the sound(s). Shift-click will allow you to select several consecutive sounds; Ctrl-click will allow you to select nonconsecutive sounds. Here is a selection of a few programs:

Loc	Name	Categor
1	The Grand	Grand
2	Eltons Piano	Grand
3	ZawiTines	EPiano
4	SparkleTop	EPiano
5	HardTines	EPiano

- 3 Click the Sound Up tool or right-click the selected sound(s) and select Upload. The dialogue will prompt you to browse to the desired destination folder on the hard drive. The upload process may take a few moments depending on the size of the sounds.

Program Bundles

A Program Bundle contains one or several programs, and all the pianos and samples that these programs use, in one file. Bundles are great to store parts of the memory from your Nord Piano 2. If you select one program and create a Bundle, the Bundle will be pretty small in size, and the uploading process will be reasonably quick, compared to a complete Backup procedure.

You can also create another Bundle with all the programs you need for a specific performance, and when you need those programs again, the Bundle functionality will restore them and their sound files to your Nord Piano 2.

i Pianos and samples that are used by several programs will not be duplicated in a Bundle, nor will they be downloaded back to the instrument if they already are in place in the instrument.

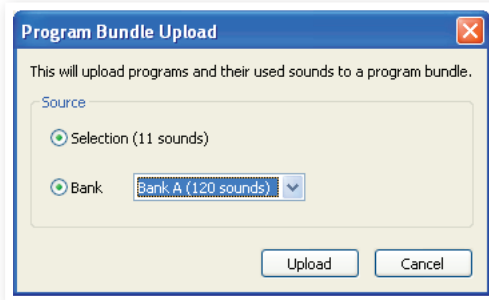
Upload a Program Bundle

- 1 Open the Program Tab and select one, or several programs. Use Ctrl-click to make non-consecutive selections like this one:

Bank	Loc	Name
Bank A	01:1	Grand 1
Bank A	01:2	Grand 1 w EQ
Bank A	01:4	Abba-Grand
Bank A	01:5	PianamaSplit
Bank A	02:1	Grand 2
Bank A	02:2	Grand 2 w EQ
Bank A	02:3	LeftHand Orch
Bank A	02:4	Grand 2 w more
Bank A	02:5	GrandDx ep
Bank A	03:1	Grand 3

- 2 Click on the Bundle Up icon in the Toolbar.

The Program Bundle Upload dialog gives you two choices:



Selection will create a Program Bundle with the selection of programs you made in the Sound Manager program list and the pianos and/or samples that these programs use.

Bank makes a Bundle of an entire Bank that you select with the drop-down. This action will probably take a bit longer and the resulting Bundle will be a bigger file since there may be many more pianos and samples in this type of Bundle.

- ③ Choose the Selection option and click on Upload. In the following dialog, give the Bundle a meaningful name and find a location on the computer hard drive.

A Program Bundle file will have the extension .np2pb.

Downloading a Bundle

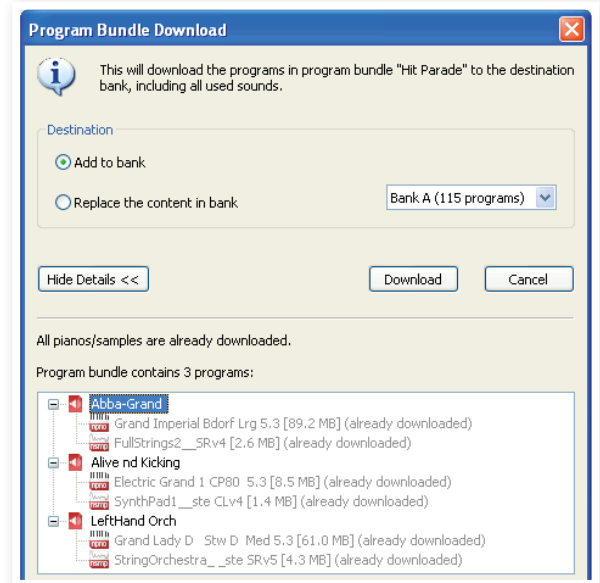
Here comes the really great part about Bundles. When you download a Bundle to the instrument, any pianos and samples that the programs in the Bundle depend on, are downloaded. They will be placed at the next available location in the piano and/or Samp Lib partition.

- ❗ *Pianos and samples are not duplicated if these files are already in the instrument. The Bundle programs will use the new or existing locations of the pianos and samples, when they are downloaded to the free locations in the program partition.*

- ① Make sure the Program Tab is open.
- ② Press the Bundle Down icon in the Toolbar. You can also use the Bundle Download command from the File menu (Ctrl+Shift+D).
- ③ Navigate to the Bundle file that you wish to download and click Open.

After the Manager has verified the files in the Bundle, the Program Bundle Download dialog will appear.

- 💡 *Click on Show Details if you want to see what programs, pianos and samples are in the Bundle.*



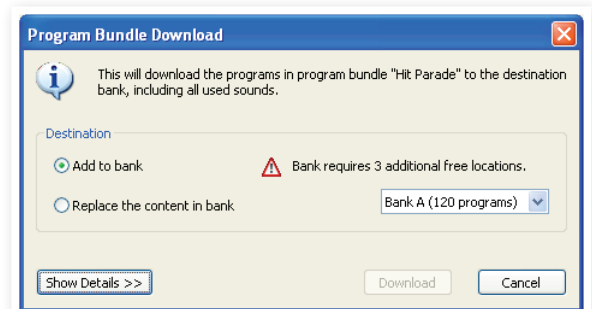
There are two options when you download a Bundle.

Add to bank will download the program files and add them to the program bank that you choose in the drop-down menu. The programs will be placed at the first available locations.

- ❗ *If the programs in the Bundle will not fit in the Bank, the process will not be performed and you will see a dialog. Delete or move some programs from that Bank and try again.*

Replace contents in a bank will simply delete all programs in the Bank you choose and download the programs in the Bundle to this bank instead. The programs will be placed at the same locations as they had when the bundle was created.

If a bundle will not fit in a bank, this will be presented in the dialog like in this example where more free locations are needed in the program bank:



Organize the program partition

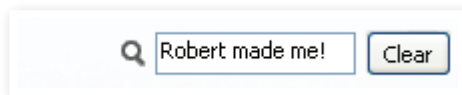
By using drag and drop, you can organize the content of the Program partition with its 240 programs.

- ① Make sure that Organize is turned on in the View menu.
- ② Select and drag a program from the destination location to the desired location.

If you drop a sound on a free location, the sound will be moved from the source location. If you drop it on a location that is occupied, the two sounds will change locations.
- ③ Select a program and press the Ctrl-key on the computer keyboard. If you now drag this selection, the Program will be copied and pasted at the destination instead of just being moved.

Search Box

By entering one or several characters in the Search Box, you can filter out the content that is presented in the lists.



This provides you with a quick way to find duplicate programs, etc..

Auto Select

By clicking on the Auto Select icon in the toolbar, you toggle the Auto Select function on or off.

When Auto Select is turned on and you scroll through the pianos, samples or program lists using the computer keyboard arrow keys, the sounds will automatically be selected in the Nord Piano.

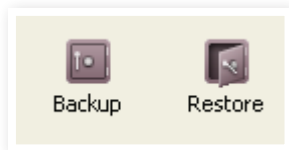


💡 *Double-clicking on a piano, sample or program will also make it active in the Nord Piano 2.*

Backup

- ① Click on the Backup icon to make a backup file that contains all the content in your Nord Piano 2.

The Nord instruments are built to the highest standards of reliability but doing regular backups is always a good thing. You never know when a revengeful cat figures out how to format a critical memory bank.



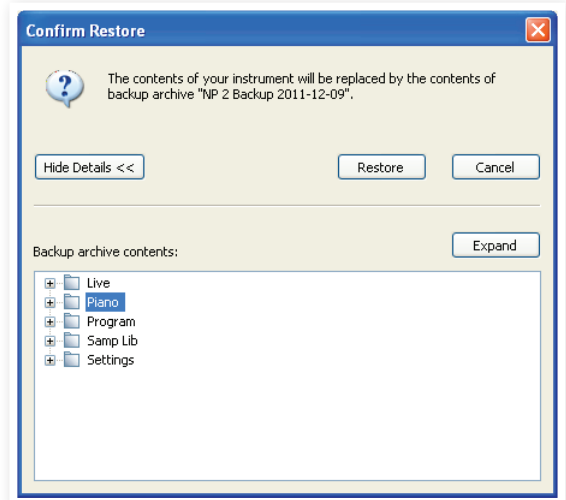
- ② Give the backup file a meaningful name and find a suitable location on your hard drive. A backup file will have the extension .np2b.

💡 *If you choose a backup file that already exists, only the changes that have occurred in the instrument will be added to that previous file.*

Restore

When you want to restore the entire content of the Nord instrument, click on the Restore icon in the Toolbar and select a backup file that you have made. You can also drag the backup file from the computer and drop it to the Manager window.

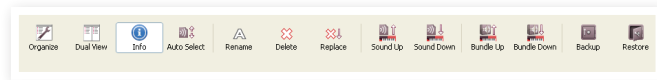
The Confirm Restore dialog will appear that requires your confirmation. You can look at the content of the file if you click on "Show Details".



There is a Factory Backup file on the Nord Piano Library DVD that was delivered in the box with the instrument, that can be used to restore the unit to the content it was shipped with. This file can also be downloaded from the www.nordkeyboards.com website.

Sound Manager reference

Toolbar



Organize

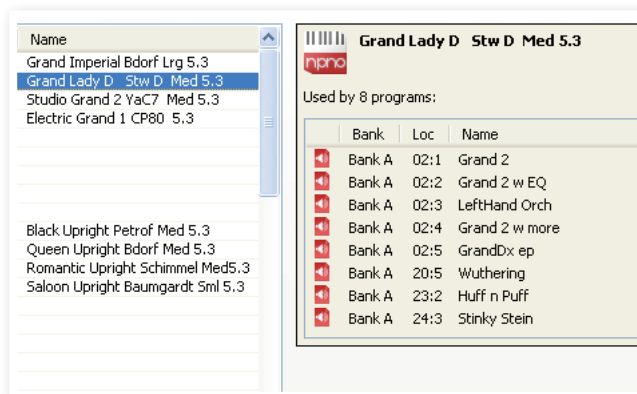
When this option is active, the lists will show all the available locations in the selected partition/bank and not only the occupied ones. This will for instance make it possible to drag a file to a specific free location in the middle of the list. If this is inactive, only the occupied locations will be shown and re-arranging the order is not possible.

Dual View

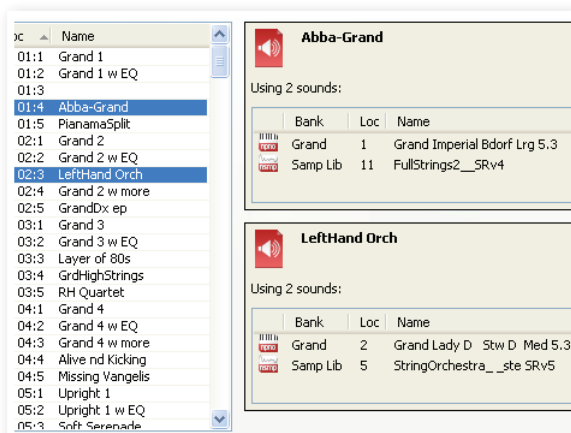
When this option is checked, the window (if set to display the Program partition) will be divided in two lists. You can make the lists show separate banks with the drop-downs. Rearranging programs is simply a matter of drag and drop. Drag a program from one bank/list to another bank/list in either direction.

Info

Activating Info brings up an information area to the right of the list.



The Info area will show if a selected piano or a sample is used in any Programs, or what pianos and samples are used in any selected Programs. This provides you with an excellent way of keeping track of how the content parts in the Nord Piano depends on each other.



Let's say you need to delete some of the factory samples to make room for new samples. By selecting a sample in the Samp Lib partition and activating Info, you can see which of the programs that would be affected by such a deletion (or replacement).

Auto Select

With this function active, scrolling through the piano, sample or program list with the computer keyboard arrow keys will automatically select the sound in the Nord Piano 2.

Rename

This allows you to rename a program. 16 characters can be used, and the supported characters are: a-z, AZ, 0-9 and the hyphen (-). Any other characters will not be displayed in the Sound Manager lists.

i *Pianos or samples cannot be renamed so this function is not available if you have selected any of these.*

Delete

Allows you to delete one or several selected sounds. You will be asked to confirm your intentions. You may also use the delete or backspace key on the computer keyboard to perform this action.

i *Any Program in the Nord Piano 2 that used a particular piano or sample that you deleted will probably not sound at all, since it will be missing an important component.*

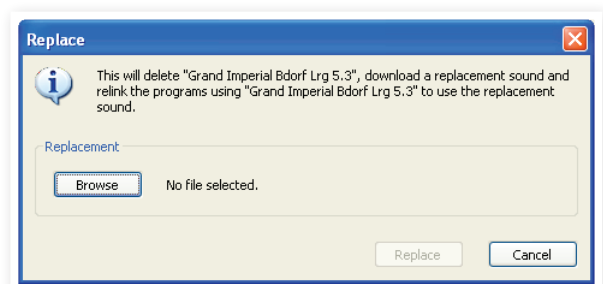
The space that a deleted piano occupied is not immediately available to other sounds, even though it is gone from the list and its location is free. The Flash memory needs to be cleaned to free up the space where the deleted sounds have been. When you add a new piano the cleaning process will be initiated automatically. You also have the option to manually start the cleaning process with the Clean Deleted Space command from the File menu.

i *Flashing LEDs in the Piano Type and Model section indicates that the piano that the current program tried to use is not available in the Flash memory. Select another program or download the missing piano to the Nord Piano 2.*

Replace

This allows you to replace a selected piano or a sample with another piano or sample that you have on the computer hard drive.

This function is not only about replacing the sound file in the memory, all the programs that used the old sound, will be updated, relinked to use the new sound instead.



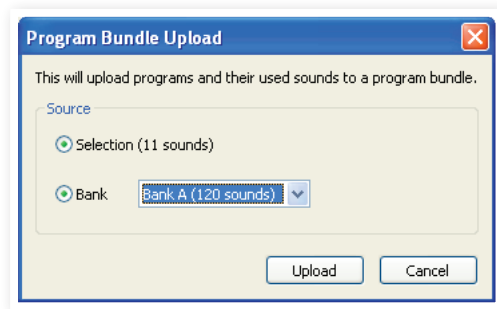
Sound Up

Use this function to upload one or several sounds from the Nord Piano 2 to the computer hard drive.

Sound Down

Use this function to download one or several sounds from the computer hard drive to the next available location in the selected partition.

Bundle Up



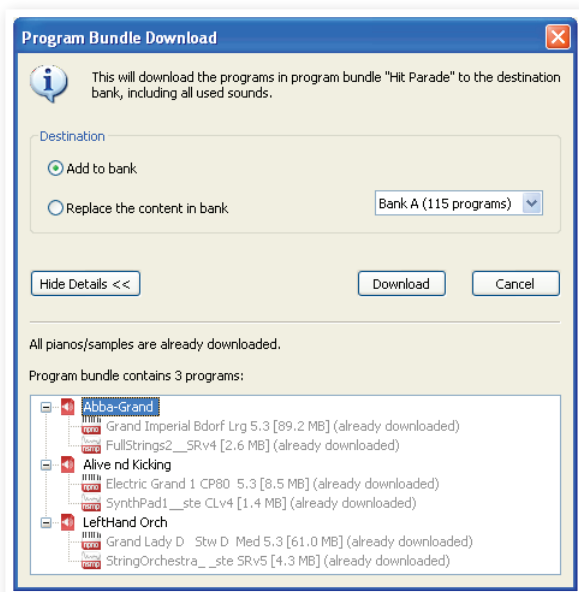
This function will upload a selection of programs or an entire Bank to the computer hard drive, and include all the pianos and/or samples that these programs use in a Program Bundle file.

The default source will be the currently selected Program(s) or the active bank, but you can choose another bank with the drop down menu.

Click on the Upload button to enter the name of the Bundle and to select the destination on the hard drive. The Program Bundle file that is created on the hard drive will have the extension .np2pb.

Bundle Down


This function will download a Bundle with programs, pianos and samples from the computer hard drive to the Nord Piano 2. You have a choice if you want the Bundle to be appended to the existing programs in the bank in focus or if the Bundle should replace the contents in an entire bank of your choice.



Programs in a Program Bundle will be downloaded to the locations where they came from if the Replace option is selected.

Backup


This will make a backup of all the pianos, samples, programs, Live programs and the menu settings in the Nord Piano 2. The file that is created on the hard drive will have the extension .np2b. Backing up the entire memory content in this manner will take some time, depending on the sizes of the pianos and samples installed.

 *Backing up from the Nord Sound Manager is done in an incremental manner. Unless you change the name or the location of the backup file, only the pianos and/or programs that have been changed since the previous backup will be saved.*

The Nord Sound Manager will suggest a location for the backup the first time this function is selected (in My Documents/Nord Sound Manager files/). If you'd rather save the backup file elsewhere, use the browser to pick another destination.

Restore

To restore a previously saved backup file to the Nord Piano 2, select this option and browse to a backup file on the hard drive (file extension .np2b) and click Open.

 *The restore process will begin after you have clicked Open and confirmed your intentions in the dialogue. All the content that isn't in the backup file in a connected Nord Piano 2 will then be irrevocably replaced by the content in the backup file.*

Menus

The usual Windows and Mac OSX keyboard commands can be used in the Nord Sound Manager. The menus can be accessed by pressing the Alt key and the underlined letter in the menu bar.

Most of the commands can also be accessed by pressing the Ctrl (on the Mac - Command) key together with the letter shown next to the command name in the menus.

File menu

Sound Upload (Ctrl+U)

Use this function to upload one or several sounds from the Nord Piano 2 memory to a folder on the computer hard drive.

Sound Download (Ctrl+D)

Use this function to download one or several sounds from the computer hard drive to the next available location in the selected partition.

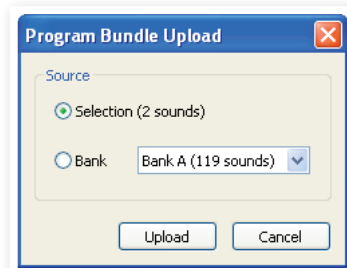
Program Bundle Upload (Ctrl+Shift+U)

This function will upload a selection of programs or an entire Bank to the computer hard drive, and include all the pianos and/or samples that these programs use in a Program Bundle file.

The default source will be the currently selected program(s) or the active bank, but you can choose another bank with the drop down menu.

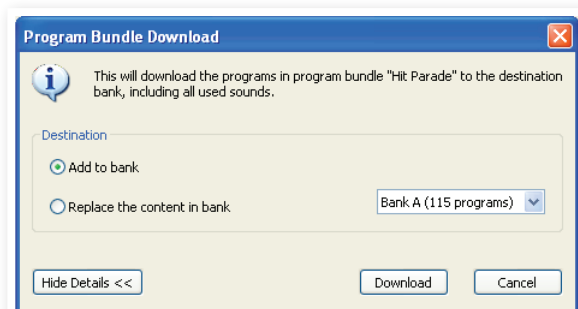
Click on the Upload button to enter the name of the Bundle and to select the destination on the hard drive. The Program Bundle file that is created on the hard drive will have the extension .np2pb.

Sound Upload...	Ctrl+U
Sound Download...	Ctrl+D
Program Bundle Upload...	Ctrl+Shift+U
Program Bundle Download...	Ctrl+Shift+D
Backup...	Ctrl+B
Restore...	Ctrl+R
Clean Deleted Space Format	
Export Sound Lists...	
Exit	Ctrl+Q



Program Bundle Download (Ctrl+Shift+D)

This function will download a Bundle with programs, pianos and samples from the computer hard drive to the Nord Piano 2. You have a choice if you want the Bundle to be added to the existing programs in the bank in focus or if the Bundle should replace the contents in an entire bank of your choice.



Backup (Ctrl+B)

This will make a backup of all the pianos, samples, programs, Live programs and the menu settings in the Nord Piano 2. The file that is created on the hard drive will have the extension .np2b. Backing up the entire memory content in this manner will take some time, depending on the sizes of the pianos and samples installed.

⚡ Backing up from the Nord Sound Manager is done in an incremental manner. Unless you change the name or the location of the backup file, only the pianos and/or programs that have been changed since the previous backup will be saved.

The Nord Sound Manager will suggest a location for the backup, the first time this function is selected (in My Documents/Nord Sound Manager files/). If you rather save the backup file elsewhere, use the browser to pick another destination.

Restore (Ctrl+R)

To restore a previously saved backup file to the Nord Piano 2, select this option and browse to a backup file on the hard drive (file extension .np2b) and click Open.

⚠ The restore process will begin after you have clicked Open and confirmed your intentions in the dialogue. All the content of a connected Nord Piano 2 will then be irrevocably replaced by the content of the backup file.

Clean Deleted Space

This function will clean up the space where any previously deleted pianos or programs have been. This is done in order to make this deleted memory space available to new additions.

❗ Cleaning is automatically done if you download a new piano or program to the Nord Piano 2, but this menu command makes it possible to manually start the cleaning process.

Format

This is a radical function; it will format the entire partition that is in focus. All the sounds in the partition will be deleted. You will be asked to confirm your intentions.

Export Sound Lists

The Export command will create a set of text-based lists of the content in the unit, saved to location of your choice. The number of lists created depends on the type of instrument. The lists contain information with the names, locations and sizes of pianos and samples, the program list also contain information of which piano and/or samples are used for every program in the unit.

The lists are formatted in a .html format. Double-click on a list to view it with a web browser, an application that probably can print them for you as well. The lists can be opened with a spreadsheet application, if you wish to perform further manipulation.

Exit (Ctrl+Q)

Exits the Nord Sound Manager application.

Edit menu

Rename (Ctrl+N)

This allows you to rename a program. 16 characters can be used, the supported characters are: a-z, A-Z, 0-9 and the hyphen (-). Any other characters will not be displayed in the Sound Manager lists.

i Pianos or samples cannot be renamed so this function is not available if you have selected any of these.

Delete (Del)

Allows you to delete a selected item(s) from the Nord Piano 2 memory.

⚠ A dialog will appear to with information if this action will affect any programs in the Nord Piano 2, that uses these sound. You will be asked to confirm your intentions.

Replace

This allows you to replace a selected piano or a sample with another piano or sample that you have on the computer hard drive. This will also change all programs that used that sound, to the new sound instead.

Select All (Ctrl+A)

Select all items in a bank/partition.

Invert Selection

This will deselect the original selection and then select all the other items in the list.

View menu

Organize (Ctrl+O)

When this option is checked, the lists will show all the available locations in the selected partition/bank and not only the occupied ones. This will for instance make it easier to drag a file to a specific free location in the middle of the list. If this is unchecked, only the occupied locations will be shown.

Dual View (Ctrl+L)

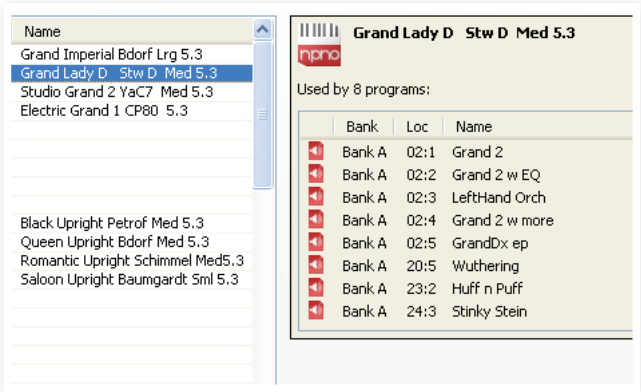
When this option is checked, the window will be divided in two lists. The two lists makes it easy to move programs from one location to another. You can make the lists show separate banks with the drop-downs. Rearranging programs is simply a matter of drag and drop. Drag a program from one bank/list to another bank/list in either direction.

💡 Press the Ctrl-key on the computer keyboard to copy a selection to the destination during a drag and drop operation.

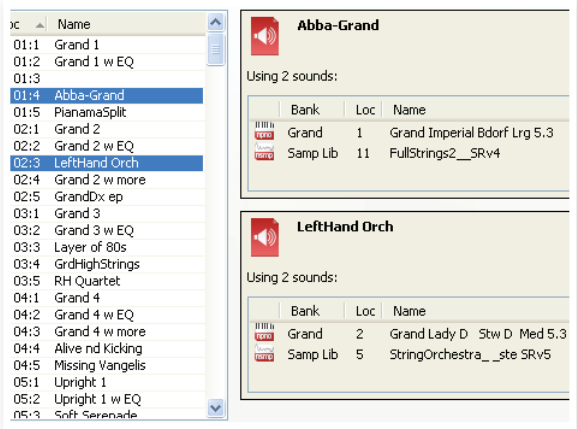
Rename	Ctrl+N
Delete	Del
Replace...	Ctrl+P
<hr/>	
Select All	Ctrl+A
Invert Selection	

Info (Ctrl+I)

Activating Info brings up an information area to the right of the list.



This area will show if a selected piano or a sample is used in any programs, or what pianos and samples are used in any selected programs.



Auto Select

When this function is active, pianos, samples or programs will be automatically selected in the Nord Piano 2 when you browse through the sounds in the Manager list, with the computer keyboard arrow keys.

Help menu



About

Brings up the About box with a information regarding the version of the Nord Sound Manager. You will also see a list of compatible instruments and OS versions.

Tabs



Piano – Samp Lib - Program

Use the tabs to select the desired partition. The drop down menu is used to select the desired bank within the piano, sample or program partitions. The content of the partition will be presented in the list.

💡 *Press the Ctrl + Tab keys on the computer keyboard to cycle between the tabs.*

Search Box

Enter a phrase to quickly present any pianos or programs that contains the characters. Press Clear to clear the filtering and show all entries again.

Loc - Location

The banks are organized in locations; the number of locations varies for the different bank types.

Name

The name of the item.

Size

Shows the file size of the pianos and samples. This may be useful if you need to know how much space e.g. a particular piano occupies in the piano partition. This unit is not shown in the program lists.

Ver – Version Number

This indicates the version number of the actual piano, sample or program format. Older OS versions may not be able to use sounds in a newer format.

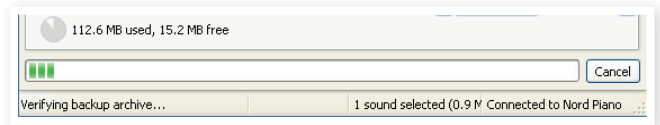
Info

This area contains various information messages regarding the memory content in the Nord Piano 2. If a piano or sample is not used by any of the programs, it will be indicated here. This area is also used to alert you if a piano or a sample that a program in the Nord Piano 2 would use, is missing from the instrument.

On a rare occasion that something happens with any of the files in the unit, error information about broken, corrupted or rejected files, will be displayed here. If this happens, delete the broken file and reload it to the instrument.

Footer Area

The footer area is located at the bottom of the Nord Sound Manager window.



Partition Memory Indicator

This indicates the usage of the selected partition's memory. The dark area shows the used memory and the brighter area indicates space that is available for additional sounds.

The Piano partition is approximately 500 MB in size, the sample partition is approximately 128 MB.

Cancel Button

Use this function if you need to cancel a process that is in progress. Certain functions like e.g. a restore process cannot be cancelled.

Progress Bar

The progress bar indicate the progress of an ongoing process.

Message/Text Area

The left part of the text area will present any confirmations or error messages from the Nord Sound Manager.

The right part will indicate if a Nord Piano 2 is connected to the computer and in communication with the Nord Sound Manager. The OS version of the connected Nord Piano 2 will also be displayed here.

Updates and pianos

Please visit our website at <http://www.nordkeyboards.com> to download any updates of the Nord Sound Manager and sounds that have been released for the Nord Piano 2. These items will be available as free downloads in the download area and in the Libraries area.

9 MIDI

About the MIDI implementation

The following MIDI messages can be transmitted and received from the Nord Piano 2:

Note On/Off

- Note On and Note Off messages are transmitted and received.

Controllers

In the MIDI Menu (see page 19), you can select if the Nord Piano 2 should transmit and/or receive Control Change messages.

- If you have a Nord Triple Pedal connected to the sustain pedal input, the sustain pedal is transmitted as Controller 64.
- If you have a Nord Triple Pedal connected to the sustain pedal input, the sostenuto pedal is transmitted as Controller 66.
- If you have a Nord Triple Pedal connected to the sustain pedal input, the soft pedal is transmitted as Controller 67.
- Almost all other controls (knobs and buttons) on the front panel are also transmitted (and received) as Control Change messages. This can be used to record your actions on the front panel into a MIDI sequencer. For a full list of which parameters correspond to the Controller numbers, see the MIDI Controller list in this chapter.

💡 *The Nord Piano 2 can transmit MIDI messages via the USB interface, when the MIDI channels with the "USB" prefix is chosen. This is set in the MIDI menu, read more on page 19.*

Keyboard velocity

The Nord Piano 2 can transmit and receive keyboard velocity messages. Release velocity is also transmitted but ignored on reception.

Program change

In the MIDI Menu (see page 19), you can select if the Nord Piano 2 should transmit and/or receive Program Change messages.

When you select a Page and a Program, a Program Change message is transmitted via MIDI. If a Program Change message is received on the selected MIDI Channel, the Nord Piano 2 will change Program accordingly. If you change the Bank, a Bank Select message (CC32, value 0 or 1 for Bank A and B) will be transmitted.

The 120 Program locations within each bank transmit and respond to MIDI Program Change values 0-119. The Live Mode programs use MIDI Program Change 120-124.

MIDI Sysex (System Exclusive)

Individual or all Programs can be transmitted and received as a System Exclusive dump.

Nord Piano 2 with a sequencer

Connections

- 1 Connect the MIDI Out on the Nord Piano 2 to the MIDI In on your sequencer, or use the USB MIDI capabilities.
- 2 Connect the MIDI Out from your sequencer to the MIDI In on the Nord Piano 2 (or use the USB capabilities).

Local On/Off

Local Off may be used when you use a sequencer to record and play back from Nord Piano 2. If the sequencer echoes back incoming MIDI data, the Nord Piano 2 may respond twice to every note and other message/action. Local On/Off is set on the MIDI menu, see page 16.

MIDI Channel

The MIDI channel that the Nord Piano 2 uses is selected in the MIDI menu - see page 19.

Program Change

Usually you select a Program Change value for a track in the sequencer track settings. The 120 program locations for each Bank transmit and respond to Program Change values 0-119.

If you want to record a Program Change message, initiate recording in the sequencer and simply select the program on the Nord Piano 2.

Controllers

When you record actions with knobs and buttons, make sure that the sequencer "echoes" the changes back on the correct MIDI Channel, or your changes won't have any effect.

About controllers & "chasing"

Consider a situation where you record a Controller message, e.g. a change in the wet/dry mix of the reverb, in the middle of your sequencer song. Then you "rewind" the sequencer to a position before the recorded reverb change. The problem is that the Nord Piano 2's reverb mix will remain unchanged, although it really should be as it was before you recorded the opening.

To solve this, you could record a "snapshot" of all Controller settings of the Nord Piano 2 Program at the beginning of your sequencer song. See "Sending MIDI Controller dumps" below.

Program & Controller dumps

To dump a Program Sys Ex, or MIDI Controller data via MIDI, either to another Nord Piano 2 or for recording the data into another MIDI device, proceed as follows:

Sending program dumps

- ① Connect the MIDI Out on the Nord Piano 2 to the MIDI In on the receiving device (or use the USB capabilities).
- ② Set up the receiving device to accept MIDI Sys Ex and MIDI Controller data.
- ③ Press Shift + MIDI and select the “Dump One” or “Dump All” menu item using the Up/Down buttons.
- ④ If needed, set the receiving MIDI device to “recording mode”.
- ⑤ Press the Store button to send the dump to the MIDI Out of Nord Piano 2. The display will inform you when the transmission has been completed.

❗ *All program parameters will be sent but NOT the actual piano or sample sounds.*

When dumping back a program that uses a piano sound, make sure the actual piano are also available in the Nord Piano 2. Otherwise the parameters in the Sys Ex message will be applied to another available piano instrument.

Sending MIDI Controller dumps

- ① Set up as in steps 1 and 2 in the preceding description.
- ② Press Shift + MIDI and select the “Send CC” menu item using the Up/Down buttons.
- ③ Press the Store button to send the dump to the MIDI Out of Nord Piano 2. The display will inform you when the transmission has been completed.

Receive MIDI SysEx dumps

Here is how to receive a MIDI SysEx Dump:

- ① Connect the MIDI Out on the transmitting device to the MIDI IN on the Nord Piano 2.
- ② Initiate the transmission on the transmitting device.

If the dump contained all Programs (All), it will replace all programs currently stored in the Nord Piano 2. If the dump contained only a single program, it will be temporarily placed in the currently selected program memory location.

An asterisk will appear in the display to in the upper, left area next to the program number to indicate an unsaved edit. You then have to store the program manually to a memory location using the Store function (see page 14).

MIDI Controller list

These are the MIDI Controller numbers used for all the knobs and the buttons on the Nord Piano 2 front panel:

Nord Piano 2 Parameter	MIDI Controller
Kbd Split	14
Transpose	15
Kbd Touch	33
Piano Level	106
Piano Type	12
Piano Model	44
Piano On/Off	46
Clav Model	45
Acoustic Model String Resonance/Release	79
Acoustic Model Pedal Noise	78
Piano Octave Shift	105
Synth Level	51
Sample Select	52
Synth Attack	53
Synth Release	54
Synth On/Off	55
Synth Octave Shift	56
Effect 1 Rate	63
Effect 1 Type	60
Effect 1 On/Off	69
Effect 1 Source	70
Effect 2 Rate	62
Effect 2 Type	61
Effect 2 On/Off	80
Effect 2 Source	71
Delay Mix	75
Delay Feedback	76
Delay On/Off	84
Delay Source	85
EQ On/Off	115
EQ Treble	113
EQ Mid	116
EQ Mid Freq	117
EQ Bass	112
EQ Source	118
Amp/Comp On/Off	86
Amp/Comp Amount	111
Amp/Comp Sel	81
Amp/Comp Source	87
Reverb Wet/Dry	102
Reverb Sel	96
Reverb On/Off	97
Sustain pedal	64
Soft pedal	67
Sostenuto pedal	66
Volume Pedal	11

MIDI Implementation Chart

Function		Transmitted	Recognized	Remarks
Basic Channel		1 - 16	1 - 16	
Default Channel		1 - 16	1 - 16	
Mode	Default	Mode 3	Mode 3	
	Message	X	X	
	Altered			
Note		0-127	0-127	
Number	True Voice			
Velocity	Note ON	O, v= 1 - 127	O, v= 1 - 127	
	Note Off	O, v= 1 - 127	X, v= 1 - 127	
After	Key's	X	X	
Touch	Channel	X	X	
Pitch Bender		X	X	
Control Change		O	O	
Program Change		O, 0-127	O, 0-127	
True#				
System Exclusive		O	O	
System Common	Song Pos	X	X	
	Song Sel	X	X	
	Tune	X	X	
System Realtime	Clock	X	X	
	Commands	X	X	
Aux Message	Local on/off	X	X	
	All notes off	X	X	
	Active Sense	X	X	
	Reset	X	X	
Number	True Voice			

Mode 1: Omni On, Poly - Mode 2: Omni O, Mono - Mode 3: Omni Off, Poly - Mode 4: Omni Off, Mono - O = Yes - X = No

Model: Nord Piano 2 OS v1.x Date: 2011-01-02

10 Index

A

Acoustics 16
Append 25
Auto-Panning 18
A-Wa 18

B

Backup 28, 29
Bank Up 28
Bundle Down 28
Bundle Up 28

C

Cancel 31
Chorus 18
Clavinet 17
Clean Deleted Space 29
Compressor 18
Control Change 19

D

Delay 18
Delete 27, 30

E

Edit 10
Effects 12, 17
EQ 18
Exit 29
Export Soundlists 29
Extensions 22

F

Factory presets 4
Feedback 18
File Formats 22
Fine Tune 19
Flanger 18
Format 29

G

Global Transpose 19

H

Half pedalling 9
Headphones 8

I

Info 30
Invert Selection 30

K

Kbd Touch 15

L

Left Out 8
Live 11
Live Mode 15
Loc 31
Local 19
Local Control 19

M

Master level 14
Memory Protect 11, 19
MIDI Channel 19
MIDI Controller list 33
MIDI In 8
MIDI Indicator 14
MIDI Menu 19
MIDI Out 8
Model 16
Monitor In 8
Mono 15
Music Stand 9

P

Partition Memory 31
Pedal Menu 20
Pedal Noise 16
Phaser 18
Piano 16
Piano Type 16
Press 17
Program 14
Program Bundle 24
Program Change 19
Program memory 10
Progress 31

R

Relink 22, 24
Rename 30
Replace 23
Restore 29
Reverb 18

S

Sample Octave Shift 17
Sample Synth 17
 Attack 17
 Level 17
 Release 17
Select All 30
Send CC 19
Shift 15
Shift button 7
Size 31
Sostenuto 9
Sound Down 27
Sound Menu 20
Sound Upload 29
Store 11, 14
Store As 14
String Resonance 16
String Resonance Level 20
System Menu 19

T

Tempo Tap/Set 18
Transpose 15
Tremolo 18
Triple Pedal 9

U

Up/Down buttons 14

W

Wah-Wah 18

FCC Information (U.S.A.)

1. IMPORTANT NOTICE: DO NOT MODIFY THIS UNIT!

This product, when installed as indicated in the instructions contained in this manual, meets FCC requirements. Modifications not expressly approved by Clavia may void your authority, granted by the FCC, to use the product.

2. IMPORTANT: When connecting this product to accessories and/ or another product use only high quality shielded cables. Cable/s supplied with this product MUST be used. Follow all installation instructions. Failure to follow instructions could void your FCC authorization to use this product in the USA.

3. Note: This equipment has been tested and found to comply with the limits for a Class B digital device, pursuant to Part 15 of the FCC Rules. These limits are designed to provide reasonable protection against harmful interference in a residential installation. This equipment generates, uses, and can radiate radio frequency energy and, if not installed and used in accordance with the instructions, may cause harmful interference to radio communications. However, there is no guarantee that interference will not occur in a particular installation. If this equipment is found to be the source of interference to radio or television reception, which can be determined by turning the equipment off and on, the user is encouraged to try to correct the interference by one or more of the following measures:

- Reorient or relocate the receiving antenna.
- Increase the separation between the equipment and receiver.
- Connect the equipment into an outlet on a circuit different from that to which the receiver is connected.
- Consult the dealer or an experienced radio/TV technician for help.

This device complies with Part 15 of the FCC Rules. Operation is subject to the following two conditions:

- (1) this device may not cause harmful interference, and
- (2) this device must accept any interference received, including interference that may cause undesired operation.

Unauthorized changes or modification to this system can void the users authority to operate this equipment.

This equipment requires shielded interface cables in order to meet FCC class B Limit.

For Canada

NOTICE

This Class B digital apparatus meets all requirements of the Canadian Interference-Causing Equipment Regulations.

AVIS

Cet appareil numérique de la classe B respecte toutes les exigences du Règlement sur le matériel brouilleur du Canada.

DECLARATION OF CONFORMITY Compliance Information Statement

Model Name: Nord Piano 2

Type of Equipment: Digital Piano

Responsible Party: Clavia DMI AB

Address: P.O. BOX 4214, SE-102 65 Stockholm Sweden

Telephone: +46-8-442 73 60

