

Capital Equipment



Diagnostic Imaging

vScope Starter Kit

Developed entirely for medical practices. The vScope is a lightweight, multifunctional and practical videoscope with a good image quality. The very affordable scope gives the surgeon a good reason to offer endoscopic examinations to the clients. The 5.4 mm diameter of the scope makes it suitable for even smaller animals.

The vScope Starter Kit includes

- 2 x vScopes, length 63 cm, diameter 5.4 mm
- Ambu aScope Monitor, screen size 6.5", (monitor is with rechargeable battery)
- Monitor bracket (for attaching monitor on e.g. an IV pole)
- Power supply and adaptors
- Cable for video out
- Instruction for Use
- Dual voltage

The vScope, is a low investment alternative, that reduces the economical reason for not offering endoscopic examinations to clients. It is a cost-effective solution for clinics of all sizes, that allows mobile or multi-site placement.

As the vScope is available at a low cost, it offers diagnostic potential to the clinics, that cannot justify the more expensive alternatives. Plus there are little or no maintenance costs. Even though the vScope is classified as a disposable endoscope, field tests with veterinarians have shown the scope capable of up to 10 procedures before it develops a weakness in the flexion of the tip.

Cat. No	Description
291 182	vScope starter kit
291 184	vScope flexible endoscope



UB Cam Pro

UB CAM Pro 2.0™ Videoscope

A useful tool for various applications in veterinary clinics.

- Lightweight, allowing single hand use
- Excellent image quality
- Live view with still image and video capture
- Review data with client or for referral
- Easy file/save image documentation

UB Cam enables the vet to capture and record high resolution images.

With easy image documentation UB Cam provides the ideal tool for patient treatment, comparison and record.

The videoscope is an excellent tool for visual client and referral information, especially in narrow spaces such as the ear ducts and the oral cavity.

Multiple interchangeable specula make the videoscope highly versatile in practice with otoscopy, dermatology, wound cavity and as an oral camera during dental procedures.

Technical Specifications

- Can be connected to PC/laptop via USB 2.0 port
- Minimum requirement: Windows XP
- Sensor type 1/4,5" VGA CMOS
- Sensor resolution: 660H x 507V, 334.620 pixel
- Sensor pixel size: 3.6 μm x 3.6 μm

Includes

Plastic speculums (funnels)

- 3 x 32 mm
- 4 x 53 mm
- 5 x 45 mm
- 5 x 70 mm
- 7 x 52 mm
- 7 x 52 mm, with working channel
- 9 x 43 mm Dermatoscopy
- 5 m extension cable



Cat. No	Description
---------	-------------

277170	UB Cam Pro
277171	UB Cam metal speculum 7 x 52 mm
277172	UB Cam metal speculum 7 x 52 mm (with working channel)



TonoVet Tonometer

Every vet needs a Tonovet!

Measuring of intraocular pressure should be performed on every patient with eye problems. Tonovet does this in an easy and rapid way:

- It is painless and therefore creates no anxiety
- No local anaesthetic is needed
- Features calibration tables for horse and for small animals (cats/dogs)
- Measuring of eye pressure is extremely accurate
- An innovative method

The TonoVet-Tonometer is based on a measuring principle called rebound tonometry:

- A very light soft probe is used to make momentary contact with the cornea
- The probe is electromagnetically propelled to contact and rebound from the corneal surface
- The characteristics of this rebound are used to estimate the intraocular pressure

The TonoVet Tonometries delivered in a stylish shock absorbing steel case with:

- 100 disposable probes (prevents microbiological and viral contamination)
- Probe base
- Batteries AA, 4/pk
- Instruction manual

Cat. No Description

292000	TonoVet Tonometer
292001	Probe for TonoVet Tonometer, 100/pk



Ophthalmology

ClearView™

- a whole new View on Patient Eye Care

ClearView™ uses patented technology that automatically captures retinal images in a digital format. This makes you able to capture clear, diagnostic images of the retina in very short time at 19 frames per second.

The ClearView™ Optical Imaging System projects images onto your computer screen for closer examination. Stored images can easily be sent to an ophthalmologist or other relevant recipients for further investigation through ClearView's easy-to-use, online telemedicine portal. If necessary you can store the pictures in your pet's permanent records and monitor the development of certain systemic conditions such as hypertension and diabetes over time.

The ClearView™ product includes a helpful client education DVD that explains eye structure and why the retinal imaging product is valuable. Clients learn that ClearView's high-resolution images of the retina can help in the early detection of retinopathies or even monitoring the development of chronic diseases.

Features

- The ClearView™ is an easy-to-use, affordable, advanced diagnostic tool for ophthalmic use
- It delivers better information for the client who is able to see what is actually going on in their animal's eye and will put greater value on the care being offered
- With the ClearView™, you have a more powerful diagnostic tool in hand with fast image processing and easy storage

Optibrand ClearView, Retina Camera, comes with

- Product DVD, with instructions of use of the ClearView™
- Service contacts information
- Quick steps guide to operations
- ClearView™ device powered by the USB cable
- Software installation disc

Cat. No 292120



Minimum system requirements

- Windows XP or Windows Vista Operating System
- iOS 5 or higher (if you have a MAC)
- 1.5 GHz Processor
- 32 MB free disk space
- USB 2.0
- Preferred minimum 1680x1050 monitor for optimal viewing of high resolution images



For more information
scan the QR-code
and watch the video

Monitoring

Nonin PulseSense VET Pulse Oximeter

PulseSense VET is a portable oximeter equipped with NONIN® PureSAT® SpO₂ veterinary technology. This monitor can be used in a variety of clinical applications, including spot-checking or continuous monitoring where alarms are required.

Features

- Widescreen touch panel display
- NONIN PureSAT SpO₂ technology
- Patented veterinary lingual clip sensor
- Numerical pulse rate display
- Numerical and plethysmograph SpO₂ displays
- 1.5 hours of SpO₂ and pulse rate trending history on-screen
- For use on small to large animals
- Rechargeable battery

Cat. No 291050



Nonin RespSense VET Capnograph

MedAir RespSense VET monitor offers Nonin capnography technology that measures and displays end-tidal carbon dioxide (EtCO₂), fractional inspired CO₂ (FiCO₂) and respiration rate of intubated animals. The widescreen display also serves as a user-friendly touch panel where all settings and adjustments are visible.

Features

- Widescreen touch panel display
- Nonin EtCO₂ technology
- Numerical and waveform display of EtCO₂ data
- Gas output connects to anaesthesia scavenger system
- 1.5 hours of EtCO₂ trending history on-screen
- For use on small to large animals
- Rechargeable battery

Cat. No 291060



Nonin LifeSense Multi-parameter Monitor

The LifeSense® Vet is a multiparameter monitor ideal for monitoring anaesthetised as well as Critical Care patients. The monitor measures and displays end-tidal carbon dioxide (EtCO₂) and fractional inspired CO₂ (FiCO₂) values, respiration, functional oxygen saturation of arterial hemoglobin (SpO₂), and pulse rate of intubated animals. The distinct widescreen display also serves as a user-friendly touch panel where all settings and adjustments are made.

Features

- Widescreen touch panel display
- Nonin EtCO₂ technology
- Nonin PureSAT® SpO₂ technology
- Capnograph and plethysmograph display
- Gas output connects to anaesthesia scavenger system
- For use on small to large animals
- Rechargeable battery

Cat. No 291070



Monitoring

Nonin Pulse Oximeter PalmSAT®

Small, and sturdy pulse oximeter from the well known NONIN brand. NONIN PalmSAT® 2500 VET has been specifically built for the veterinary market. Measures exact oxygen saturation in % and the pulse frequency.

- The pulse frequency can measure up till 450 beats per minute.
- Works with ordinary AA batteries (up till 60 hour) or rechargeable AA batteries (up till 45 hours)
- Charger can be bought separately (cat. No 290062)
- Supplied with 3 m extension cable and sensor

Cat. No	Description
290063	NONIN 2500AV
290062	Charger for NONIN PalmSAT 2500 VET



Nonin Pulse Oximeter With CO₂ Detector

With Vet Specific Pulseoximetry and Capnometry. Battery powered. Ideal for surgery or dental procedures on intubated animals, the unique 9847V combines semi-quantitative end-tidal carbon dioxide detection with digital pulse oximetry in one portable handheld monitor for maximum functionality.

- During the procedure, an audible breath tone is present
- Additionally, the 9847V provides accurate blood oxygen saturation, pulse rate data, and a visual respiration indicator
- Truly versatile, the 9847V allows simultaneous or independent use of the EtCO₂ detector and pulse oximeter

Cat. No 290073



Small Animal Tables

KRUUSE Easy-Lift Table

The KRUUSE Easy-Lift Table can be used in connection with examinations, treatment and surgery. This highly functional table is made in an attractive design and it offers top quality at extremely favourable prices. The table comes as a standard table. Features, such as tilting facility and castors, can easily be fitted at a later stage. Furthermore, a wide selection of extra fittings can be mounted on the table, all according to individual requirements.

Features

- Foot-operated, electrical table
- Height-adjustable from 54-100 cm
- Chassis of maximum stability, light grey powder coated frame
- Stainless steel top with drain 130 x 60 cm, 14 tie-down hooks, threaded holes for installation of rails (280775)
- Raised lip around the edge of the top
- Maximum load 120 kg

Cat. No Description

- | | |
|--------|--|
| 280915 | KRUUSE Easy-Lift Table with rechargeable battery |
| 280916 | KRUUSE Easy-Lift Table 230 Volt |
| 280917 | Tilting mechanism for KRUUSE Easy-Lift table |
| 280918 | KRUUSE Easy-Lift castors, 2 locking castors 100 mm |
| 280488 | Rubber mat for EasyLift 1300 x 600 x 4mm |



Scales

Small Animal Scale

Suitable for rodents, birds, cats and small dogs. Delivered with plastic tray to provide comfort for the animal. Digital display either wall-mounted or separate. The scales can weigh up to 20 kg with intervals of 10 g. 9 V battery, 100 mA AC adapter.

Cat. No 280793



Walk-on Scale

Weighs up to 250 kg at an accuracy of 0.1 kg. Large steel platform of 90 x 55 cm, height of 6 cm.

- Easy to ascend for the dog
- Four adjustable legs make the weight very stable
- Large LCD display
- Easy to clean
- Includes loose rubber mat
- Animal averaging software

Cat. No	Description
280790	KRUUSE Walk-on scales for clinical purposes
280794	Rubber mat for cat. No 280790
280796	Replacement display for cat. No 280790, long wire



KRUUSE Dental Equipment

KRUUSE ART-SP2 Piezo Scaler and Micromotor

Combined piezo scaler and micromotor unit. This is a superb combined Piezo unit for most veterinary practices who want an easy to use scaler and polisher in one unit. The micromotor rotates up to 30,000 rpm. Supplied with polishing accessories, enough to get you started.

The ART-SP2 is supplied with: 3 assorted scaler tips, pump up 5 litre water bottle, foot pedal control on/off, mains connection cable micromotor E fitting, straight nose cone blue / silver 1:1 ratio, starter pack polishing paste and prophy angles.



Cat. No	Description
---------	-------------

271390	KRUUSE ART-SP2 Piezo scaler and micromotor
--------	--

271403	Spare handpiece with cable for KRUUSE Piezo ultrasound tooth scaler ART SP2
--------	---

KRUUSE ART-P3 Piezo Scaler

The Mk 11 model features an upgraded "AGC" Auto Gain Control which automatically adjusts the power when in use. Only two controls for power and water. The LCD display shows the chosen power setting and the recommended scaler tip.

The ART-P3 II is supplied with

Pump up 5 litre water bottle, foot pedal control on/off, mains connection cable.



Cat. No	Description
---------	-------------

271391	KRUUSE ART-P3 piezo scaler
--------	----------------------------

KRUUSE ART-SP1 Ultrasonic Scaler and Micromotor

This is an ideally combined unit for most veterinary practices who want an easy to use scaler and polisher in one unit. The magneto - restrictive (cavitron) is a very reliable model. The micromotor rotates up to 30,000 rpm. Supplied with polishing accessories, enough to get you started.

The ART-SP1 is supplied with: 1 medium scaler tip (fine tip optional extra), pump up 5 litre water bottle, foot pedal control on/off, mains connection cable, micro motor E fitting, straight nose cone blue / silver 1:1 ratio, starter pack polishing paste and prophy angles. The polisher is compatible with most major brand polishing cups and paste. Approved for veterinary use only.



Cat. No	Description
---------	-------------

271392	KRUUSE ART-SP1 ultrasonic scaler and micromotor
--------	---

KRUUSE ART-M3 Ultrasonic Scaler

Water is required to cool the handpiece and scaler tip, and to wash away the debris, this is supplied from a pump up 5 litre water bottle. Only two controls for power and water. The Mk 11 model features an upgraded "AGC" Auto Gain Control which automatically adjusts the power when in use. The LCD display shows the chosen power setting and the recommended scaler tip.

The ART-M3 II is supplied with

1 medium scaler tip (fine tip optional extra), pump up 5 litre water bottle, foot pedal control on/off, mains connection cable.



Cat. No	Description
---------	-------------

271393	KRUUSE ART-M3 ultrasonic scaler
--------	---------------------------------

iM3 Dental Unit

Features and Benefits of the GS Deluxe LED Dental Unit

The GS Deluxe LED is a complete dental system with advanced features not found on any other dental machine. The industry's first self-generating LED light Advantage high-speed handpiece removes the need for troublesome fibre optic wiring, expensive krypton bulbs, switches and transformer. The low-speed handpiece and nose cone swivel for comfort and reduced strain on the hand. The GS Deluxe is fitted with two coolant bottles. One for the CLS solution and the other for water. Maintenance instructions are printed on the back of the machine right where you need them.

The GS Deluxe LED is supplied with the following high quality handpieces

- High-speed LED handpiece
- 3 way syringe (air, water and mist)
- Low-speed handpiece

Stainless steel instrument tray provides added storage and ideal location. The S/S instrument tray is height adjustable and removable.

The iM3 designed magnetic bur holder prevents burs from falling on the ground, they are held in place right where you need them. The corian surface is impervious to bacteria and easy to clean unlike fibreglass and plastics.

The machine features an adjustable coolant flow valve allowing the user to regulate the amount of coolant from the high-speed handpiece.

All iM3 toggles, buttons and auto HP valves can be changed in seconds due to the cartridge valve system used by iM3. This advanced feature allows for the quick cleaning and replacement of valves reducing machine down time and loss of revenue.

iM3 developed the first oil free compressor fitted to a dental machine with suction. The oil free compression eliminates the risk of oil contaminating the air supply of the dental machine. It also greatly reduces the maintenance regime. The compressor footprint is 51 x 53 cm (20 x 21"). The oil free motor generates less heat and is therefore more reliable than conventional oil compressors.

The covered compressor makes cleaning a breeze. iM3's unique technology means the compressor air is cooled on the way to the dental machine. The side of the compressor is left open to allow adequate ventilation, no continuous running fans are required.

Large diameter hospital grade casters make moving the dental machine simple.

Three way (air, water and mist) syringe is a useful instrument for washing away debris from the mouth. The tip is removable and autoclavable and can be rotated 360 degrees. The use of CLS in the dental machine allows easy application of chlorhexidine into the mouth during dental procedures.

Cat. No Description

- | | |
|--------|---------------------------------------|
| 271367 | iM3 GS Deluxe LED, without compressor |
| 271362 | iM3 GS Deluxe LED, with compressor |



FireCR Dental Reader

KRUUSE introduces the new Dental CR Solution for Veterinary Practitioners

- The full featured FireCR Dental Reader delivers high-quality dental images for the veterinary practices and veterinary dental clinics
- The package includes QuantorDentVet Imaging Software that optimizes image acquisition. The easy-to-use software supports veterinary practice workflow and requires little training. To ensure that scans are arranged in their precise locations, the operator simply picks the relevant tooth on the dental chart in the software
- The FireCR Dental Reader is compact, affordable, helping to increase patient throughput and improve the productivity of your practice or clinic. With its small footprint, the reader is easy to place and install. Whether it is on network or direct to a PC
- The FireCR Dental Reader combines an elegant design with a powerful yet easy-to-use system that gets the job done. FireCR Dental's automated, magnetized feeding tray offers "push and go" functionality, making it simple and quick to operate
- The reader is DICOM compatible and uses a full range of reusable intraoral imaging plates, offering the most frequently used plate sizes 0, 1, 2, 3, and 4c

Whether you are busy veterinary practice or a speciality veterinary dental clinic, the next-generation FireCR Dental Reader is the choice for practices looking for an affordable solution that delivers high-quality digital images.

The FireCR Dental Reader features a unique colour LCD touch screen panel for seamless device operation. With no physical push buttons on the unit and an intuitive user interface that makes it easy to clean and use. The screen provides device activity status and includes a sleep mode. It visually guides users in the operation of the system, with little or no training needed. With a built-in erase function that makes the system efficient and cost-effective.

Included in the FireCR Dental Package Imaging Plate Starter Kit

- 4 x size 2 IP
- 1 x size 4c IP
- IP Storage Box
- USB 2.0 Interface Cable
- Ethernet Cable
- Power Cable
- QuantorDentVet Imaging Software

IN THIS INCREASINGLY COMPETITIVE ENVIRONMENT, SHOW CLIENTS THAT YOUR PRACTICE OFFERS THE LATEST IN DIGITAL IMAGING TECHNOLOGY

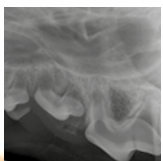
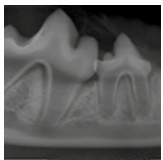
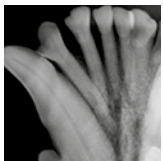
System Minimum Requirements

- Windows 7 (32-bit & 64-bit)
- Intel Core Duo/Core 2 Processor
- Min. 80 Gigabytes Hard Disk, 2 Gigabyte RAM
- NetCard (100 MBit), CD/DVD, 2 USB 2.0 ports
- Monitor: 1,280x900 pixels, DVI Interface

New



Cat. No 283500



TIVA (Total IntraVenous Anaesthesia)

TIVA Syringe Pump SK-500I

Stable and reliable syringe pump with all the necessary functions for use in TIVA anaesthesia (Total IntraVenous Anaesthesia). Depending on the syringe size, the pump can be set to deliver 0.1 - 500 ml/hour. The pump can also deliver a bolus injection if this proves necessary during anaesthesia (bolus speed depending on syringe size).

Can be used with standard 10 ml, 20 ml and 50 ml syringes. The pump will find the inserted syringe size automatically. Double CPU system ensures a safe and accurate injection process. Alarms for plugging, low battery level, infusion completion, near completed infusion.

Cat. No	Description
230535	TIVA syringe pump SK-500I
230532	Extension Tube for TIVA Syringe Pump (up to 55 bar)



Statspin VT Centrifuge incl. RT12 Rotor

Fully automatic centrifuge, ready for analyzing plasma in just 30 seconds, haematocrits in only 45 seconds using 1.5 ml microtubes. Designed to take up to 12 micro-haematocrit tubes. 220 V

Spins at between 9,800 and 20,000 RPM (RCF: 3,600-12,000 g), depending on program selection. A truly reliable centrifuge. Possibility of using RH12 haematocrit rotor with haematocrit tubes for a prompt haematocrit result.

Cat. No 290355



Therapy Lasers



Companion Therapy Laser 12 W

This therapy laser is the first truly portable Class IV laser, with a maximum power of impressive 12 W, a weight of less than 3.7 kg and a build-in long life battery pack.

This therapy laser system is equally well suited for working in the clinic and in the field. Companion Therapy Compact (CTC) offers both Smart Coat's Plus technology, the Industry's first technology that defines and administers optimal treatment dosages based on body type, hair length, skin and coat color of your patient. Companion contains a full library of canine, feline and equine preset treatment protocols designed by laser therapy experts.

The CTC system includes

- 2 pcs. laser safety goggles
- Bag for transportation
- CTC User Manual

The two reference books on Veterinary Laser Therapy

1. Laser Therapy in the Companion Animal Practice
2. Laser Therapy for the Equine Athlete

Cat. No Description

- | | |
|--------|---|
| 141890 | Companion Therapy Compact CTC therapy laser, 12 W |
| 141891 | Companion Therapy Compact CTC therapy laser bag |



Companion® Therapy Lasers CTL-6, CTL-10

6 or 10 Watts of therapeutic healing power allow you to quickly treat both superficial and deep tissue injuries.

Specifications CTL-6™

Laser Type	Class IV, Solid State
Laser Wavelength	980nm
Laser Power	0.5W - 6W
Operating Modes	CW or Pulsed
Aiming Beam	650 nm, 4.5 mW
Dimensions	31.8 x 24.1 x 16.5 cm
Weight	5.4 kg
Power Requirement	100 to 240VAC/50-60Hz

Cat. No	Description
141729	Companion Therapy Laser CTL-6

Specifications CTL-10™

Laser Type	Class IV, Solid State
Laser Wavelength	980nm
Laser Power	0.5W - 10W
Operating Modes	CW or Pulsed
Aiming Beam	650 nm, 4.5 mW
Dimensions	31.8 x 24.1 x 16.5 cm
Weight	5.4 kg
Power Requirement	100 to 240VAC/50-60Hz

Cat. No	Description
141730	Companion Therapy Laser CTL-10



COMPANION
THERAPY LASER
LifeCure, LLC

Surgical Laser

Aesculight Surgical CO₂-laser 20, 25, 30 or 40 W incl. Smoke Evacuator

CO₂ laser – the modern alternative to the scalpel!

The CO₂ laser has in principle the same wide number of applications as the traditional scalpel blade but with a lot of additional advantages:

- Less bleeding
- Laser energy seals small blood vessels as it cuts
- Blood loss is decreased
- Surgical field is clear and dry
- Anatomy can be clearly visualized
- Less swelling
- Laser energy seals lymph vessels
- Inflammatory responses and swelling are minimal
- Less pain
- Laser energy seals nerve endings
- Post-surgical pain is reduced
- Less post-surgical Infections
- Bacteria vaporized at incision site
- Reduces risk of post OP infections

Additionally the CO₂ laser gives the option of a very precise removal of unwanted tissue using laser ablation. In short the CO₂ laser will provide greater precision, less pain, less bleeding, less swelling and minimize the risk of post surgical infection compared to traditional scalpel based surgery.

The Aesculight CO₂ laser differs from other CO₂ lasers by having a completely movable HWG Hollow Wave Guide which allows focusing at the tipless end as well as various diameter beams. A complete library with photos and videos is included with the laser, which also can be auto calibrated by the user. The laser can be transported upright or laying down.

Cat. No Description

142210	Aesculight CO ₂ Laser 2010, 20 W CW, 10 W average superpulse power, over 50 W of peak superpulse power
142215	Aesculight CO ₂ Laser 2515, 25 W CW, 15 W average superpulse power, over 50 W of peak superpulse power
142220	Aesculight CO ₂ Laser 3020, 30 W CW, 20 W average superpulse power, over 100 W of peak superpulse power
142240	Aesculight CO ₂ Laser 4020, 40 W CW, 20 W average superpulse power, over 100 W of peak superpulse power

Included in 20 W laser accessory package

- Tipless handpiece
- Standard handpiece
- Wide ablation nozzle

Included in 25, 30 and 40 W laser accessory package

- Tipless handpiece fixed spot
- Soft palate handpiece
- Dental handpiece
- Smoke evacuating barrel
- Tips for dental handpiece, 0.8 mm
- Tips for dental handpiece, 0.4 mm
- Tips for soft palate handpiece 0.25 mm



PetSafe Stance Analyzer

The PetSafe Stance Analyzer measures standing lameness and assesses treatment effectiveness at a price that every clinic can afford.

Benefits

- Reveals subtle lameness
- Quick and easy to use
- Non-invasive
- Objective weight bearing data
- Easy to chart/demonstrate progress for owner

The PetSafe Stance Analyzer is a great tool that quickly and objectively diagnoses lameness in dogs of any shape and size. As the pet stands anywhere within each quadrant, the Stance Analyzer assesses the weight distribution of each leg, helping to pinpoint the source of any problem. The Stance Analyzer can detect unequal weight distribution and aid in the diagnosis of a variety of complex issues such as early onset arthritis, partial cruciate tears, hip dysplasia, intervertebral disc disease and other issues as well. Laptop included.

Cat. No 279940

Key Features

- Portable, easy to clean and virtually waterproof
- The software is easy to use and interpret. The graphical display provides visual representation of weight bearing, stability, and center of gravity. The patient's history is easily accessible, which allows you to evaluate the effectiveness of your treatment regimen. All of the information is printable so that you can share the patient's progress with the owner. The software features a Stability Test Center which reports data instantly. It provides specific data to assess lameness, and offers individual patient filing for long term monitoring
- Stance Analyzer Remote allows the complete analysis to be performed by a single person. It quickly captures real-time snapshots of each patient's stance. Samples can quickly be deleted if movement occurs. The system will average the data across all captures for the most accurate assessment

**HELPING YOUR PATIENTS GET
BACK ON THEIR PAWS**





Oster Clipper A6 Comfort, 230 V, without blade
Combines an ergonomic design, a heavy duty motor, lightweight and 3 speeds. The heavy duty motor runs at over 4,000 spm and with its high efficiency provides a cooler running experience.

- The patent pending Vibration Insulators are centered around the motor, helping to absorb vibration and noise ideal for all day grooming
- With its 3 speed from 3,100 spm to 4,100 spm, this clipper is very versatile
- The A6 Comfort also features a patent pending drive system that provides an ultra smooth and efficient cutting experience for the user
- The Zinc Alloy technology combines a lightweight ergonomic feel with a heavy duty long lasting durability
- The clipper faceplate is designed to help keep the hair out while still being able to access the drive lever for quick and easy maintenance
- The Oster A6 Comfort is compatible with all A5 blades

Cat. No 273245

New



For more information
scan the QR-code
and watch the video

Oster Clipper A6 Slim, 230 V, without blade

Combines a compact ergonomic design, a heavy duty motor, lightweight and 3 speeds. The heavy duty motor runs at over 4,000 spm and with its high efficiency provides a cooler running experience. With its 3 speed from 3,100spm to 4,100spm, this clipper is very versatile.

- The A6 Slim also features a patent pending drive system that provides an ultra smooth and efficient cutting experience for the user
- The Zinc Alloy technology combines a lightweight ergonomic feel with a heavy duty long lasting durability
- The clipper faceplate is designed to help keep the hair out while still being able to access the drive lever for quick and easy maintenance
- The Oster A6 Slim is compatible with all A5 blades

Cat. No 273246

New



For more information
scan the QR-code
and watch the video

Oster Clipper PR03000i, without blade

The Oster PR03000i offers power, balance, and light weight.

- This heavy duty cordless clipper provides 3,000 spm thanks to its silent rotary motor
- The Li-ion detachable battery runs up to 2 hours on a single charge allowing continuous clipping
- The Oster PR03000i is compatible with all A5 blades, including the wide blades
- This clipper is sold with one battery

Cat. No 273243

New



For more information
scan the QR-code
and watch the video



Oster Clipper PR0600i with blade 0.25 - 2.4 mm

This quiet rotary motor and medium duty clipper produces 4,200 spm while featuring a Li-ion battery that runs up to two hours in a single charge (charge time of 2 hours).

- The blade system allows 5 cutting lengths in 1 blade with an adjustable ring indicating the blade position
- This adjustable cord/cordless clipper is lightweight and ergonomically designed with a rubberized body that provides an advanced control grip
- It also includes one set of 4 professional stainless steel metal guide combs for a smoother finish
- The PR0600i, a cord/cordless operation clipper, offers a combination of power and convenience for professionals

Cat. No 273240

New



For more information
scan the QR-code
and watch the video





JØRGEN KRUUSE A/S
Havretoften 4
DK-5550 Langeskov - Denmark
Tel.: +45 72 14 15 16
Fax: +45 72 14 15 00
export@kruise.com - www.kruise.com