

## Home Audio System

### Operating Instructions

---

Getting Started

---

Disc/USB Playback

---

USB Transfer

---

Tuner

---

BLUETOOTH

---

Sound Adjustment

---

Other Operations

---

Additional Information

---

## Owner's Record

The model and serial numbers are located on the rear of the unit. Record these numbers in the space provided below. Refer to them whenever you call upon your Sony dealer regarding this product.

Model No. \_\_\_\_\_

Serial No. \_\_\_\_\_

## WARNING

**To reduce the risk of fire or electric shock, do not expose this apparatus to rain or moisture.**

To reduce the risk of fire, do not cover the ventilation opening of the appliance with newspapers, tablecloths, curtains, etc.

Do not expose the appliance to naked flame sources (for example, lighted candles).

To reduce the risk of fire or electric shock, do not expose this appliance to dripping or splashing, and do not place objects filled with liquids, such as vases, on the appliance.

As the main plug is used to disconnect the unit from the mains, connect the unit to an easily accessible AC outlet. Should you notice an abnormality in the unit, disconnect the main plug from the AC outlet immediately.

Do not install the appliance in a confined space, such as a bookcase or built-in cabinet.

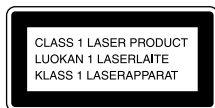
Do not expose batteries or appliances with battery-installed to excessive heat, such as sunshine and fire.

The unit is not disconnected from the mains as long as it is connected to the AC outlet, even if the unit itself has been turned off.

## CAUTION

The use of optical instruments with this product will increase eye hazard.

## Except for customers in the USA



This appliance is classified as a CLASS 1 LASER product. This marking is located on the rear exterior.

## Notice for the customers in the USA



This symbol is intended to alert the user to the presence of uninsulated "dangerous voltage" within the product's enclosure that may be of sufficient magnitude to constitute a risk of electric shock to persons.



This symbol is intended to alert the user to the presence of important operating and maintenance (servicing) instructions in the literature accompanying the appliance.

## Important Safety Instructions

- 1) Read these instructions.
- 2) Keep these instructions.
- 3) Heed all warnings.
- 4) Follow all instructions.
- 5) Do not use this apparatus near water.
- 6) Clean only with dry cloth.
- 7) Do not block any ventilation openings. Install in accordance with the manufacturer's instructions.
- 8) Do not install near any heat sources such as radiators, heat registers, stoves, or other apparatus (including amplifiers) that produce heat.
- 9) Do not defeat the safety purpose of the polarized or grounding-type plug. A polarized plug has two blades with one wider than the other. A grounding type plug has two blades and a third grounding prong. The wide blade or the third prong are provided for your safety. If the provided plug does not fit into your outlet, consult an electrician for replacement of the obsolete outlet.
- 10) Protect the power cord from being walked on or pinched particularly at plugs, convenience receptacles, and the point where they exit from the apparatus.
- 11) Only use attachments/accessories specified by the manufacturer.
- 12) Use only with the cart, stand, tripod, bracket, or table specified by the manufacturer, or sold with the apparatus. When a cart is used, use caution when moving the cart/apparatus combination to avoid injury from tip-over.
- 13) Unplug this apparatus during lightning storms or when unused for long periods of time.



- 14) Refer all servicing to qualified service personnel. Servicing is required when the apparatus has been damaged in any way, such as power-supply cord or plug is damaged, liquid has been spilled or objects have fallen into the apparatus, the apparatus has been exposed to rain or moisture, does not operate normally, or has been dropped.

**The following FCC statement applies only to the version of this model manufactured for sale in the USA. Other versions may not comply with FCC technical regulations.**

### NOTE:

This equipment has been tested and found to comply with the limits for a Class B digital device, pursuant to Part 15 of the FCC Rules. These limits are designed to provide reasonable protection against harmful interference in a residential installation. This equipment generates, uses and can radiate radio frequency energy and, if not installed and used in accordance with the instructions, may cause harmful interference to radio communications.

However, there is no guarantee that interference will not occur in a particular installation. If this equipment does cause harmful interference to radio or television reception, which can be determined by turning the equipment off and on, the user is encouraged to try to correct the interference by one or more of the following measures:

- Reorient or relocate the receiving antenna.
- Increase the separation between the equipment and receiver.

- Connect the equipment into an outlet on a circuit different from that to which the receiver is connected.
- Consult the dealer or an experienced radio/TV technician for help.

### **CAUTION**

You are cautioned that any changes or modifications not expressly approved in this manual could void your authority to operate this equipment.

Properly shielded and grounded cables and connectors must be used for connection to host computers and/or peripherals in order to meet FCC emission limits.

This equipment must not be co-located or operated in conjunction with any other antenna or transmitter.

This equipment complies with FCC radiation exposure limits set forth for an uncontrolled environment and meets the FCC radio frequency (RF) Exposure Guidelines. This equipment has very low levels of RF energy that it deemed to comply without maximum permissive exposure evaluation (MPE). But it is desirable that it should be installed and operated keeping the radiator at least 20 cm or more away from person's body (excluding extremities: hands, wrists, feet and ankles).

### **License and Trademark Notice**

- WALKMAN® and WALKMAN® logo are registered trademarks of Sony Corporation.
- MPEG Layer-3 audio coding technology and patents licensed from Fraunhofer IIS and Thomson.
- Windows Media is either a registered trademark or trademark of Microsoft Corporation in the United States and/or other countries.
- This product is protected by certain intellectual property rights of Microsoft Corporation. Use or distribution of such technology outside of this product is prohibited without a license from Microsoft or an authorized Microsoft subsidiary.
- The BLUETOOTH® word mark and logos are registered trademarks owned by Bluetooth SIG, Inc. and any use of such marks by Sony Corporation is under license. Other trademarks and trade names are those of their respective owners.
- The N Mark is a trademark or registered trademark of NFC Forum, Inc. in the United States and in other countries.
- Android™ is a trademark of Google Inc.
- Google Play™ is a trademark of Google Inc.
- iPhone and iPod touch are trademarks of Apple Inc., registered in the U.S. and other countries. App Store is a service mark of Apple Inc.

- “Made for iPod” and “Made for iPhone” mean that an electronic accessory has been designed to connect specifically to iPod or iPhone, respectively, and has been certified by the developer to meet Apple performance standards. Apple is not responsible for the operation of this device or its compliance with safety and regulatory standards. Please note that the use of this accessory with iPod or iPhone may affect wireless performance.
- All other trademarks and registered trademarks are of their respective holders. In this manual, ™ and ® marks are not specified.

---

# Table of Contents

Guide to parts and controls ... 8

---

## Getting Started

Hooking up the system  
securely.....12

Setting the clock .....14

Changing the display  
mode.....14

---

## Disc/USB Playback

Playing a disc .....15

Before using the USB device  
with this system .....15

Playing a USB device.....16

Searching for a track or  
audio file (Track Search).....16

Using play mode .....17

---

## USB Transfer

Transferring music .....19

---

## Tuner

Listening to the radio..... 23

---

## BLUETOOTH

About the BLUETOOTH  
wireless technology..... 24

Listening to music wirelessly  
on a BLUETOOTH device ..... 24

Setting the BLUETOOTH  
audio codecs..... 28

Setting the BLUETOOTH  
standby mode..... 29

Using "SongPal" via  
BLUETOOTH ..... 29

---

## Sound Adjustment

Adjusting the sound .....30

Creating your own sound  
effect .....30

Creating a party atmosphere  
(DJ EFFECT) .....31

---

## Other Operations

Using the Party Chain function.....	32
Setting the Party Chain sound mode.....	34
Viewing information on the display.....	35
Changing the illumination pattern and color .....	35
Using the timers.....	35
Using optional equipment...	37
Deactivating the buttons on the unit (Child Lock) .....	37
Setting the automatic standby function.....	38

---

## Additional Information

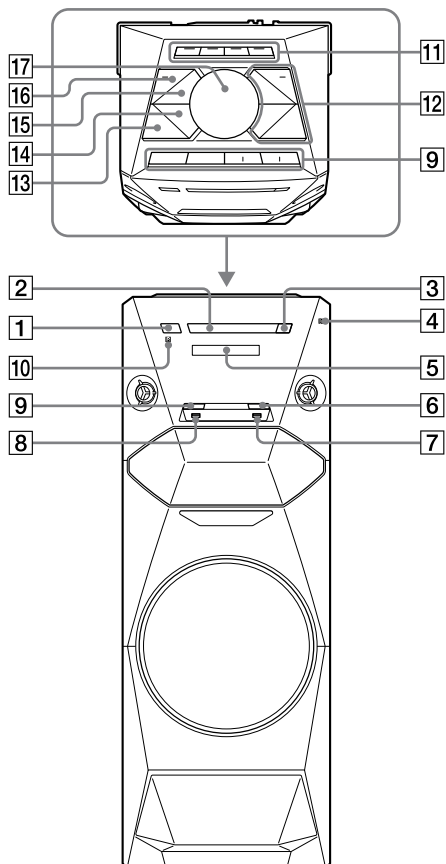
Playable discs .....	39
Websites for compatible devices and dedicated applications .....	40
Troubleshooting .....	40
Messages .....	45
Precautions .....	46
Specifications.....	48

## Guide to parts and controls

This manual mainly explains operations using the remote control, but the same operations can also be performed using the buttons on the unit having the same or similar names.

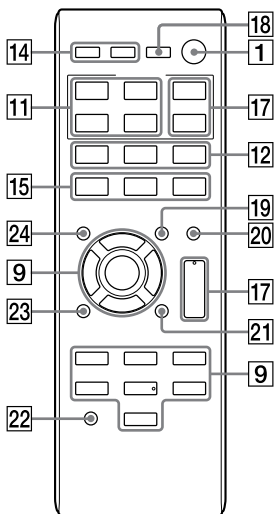
You can lock the buttons except I/⏻ (on/standby) on the unit to prevent them from being operated by mistake (page 37).

### Unit





## Remote control (RM-AMU199)



- 1** I/⏻ (on/standby)  
Press to turn on the system, or set it to standby mode.
- 2** Disc tray
- 3** ▲ (open/close)  
Press to open or close the disc tray.
- 4** **N** (N-Mark) (page 26)  
Near Field Communication (NFC) touchpoint indication.
- 5** Display
- 6** REC TO USB B  
Press to transfer music to the USB device connected to the  $\psi$  B port.

- 7**  $\psi$  B (REC/PLAY) (USB) port  
Use to connect a USB device. This USB port can be used both for playback and music transfer.

- 8**  $\psi$  A (PLAY) (USB) port  
Use to connect a USB device. This USB port can be used only for playback.

- 9**  $\blacktriangle$ / $\blacktriangledown$ / $\blacktriangleleft$ / $\blacktriangleright$   
Press to select the menu items.

**Remote control: PRESET +/-**  
Press to select a preset station when using the tuner function.

- +/- (select folder)**
  - Press to select a folder on an MP3 disc or a USB device.
  - Unit only: Press to select a preset station when using the tuner function.

**◀◀/▶▶ (rewind/fast forward)**  
Hold down to find a point in a track or file during playback.

**◀◀/▶▶ (go back/go forward)**  
Press to select a track or file.


**TUNING +/-**  
Press to tune to the station you want when using the tuner function.



- (stop)**
  - Press to stop playback. When pressed twice during USB playback, resume playback can be canceled.
  - Press to stop transfer during music transfer.


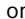
**Unit: ENTER**

**Remote control:** 

Press to enter/confirm the settings.

**Unit:  (play/pause)**

**Remote control:  (play)\*,  (pause)**

Press to start or pause playback. To resume playback, press  or .

## **10 Remote control sensor**

### **11 FLANGER, ISOLATOR, PAN, WAH (page 31)**

Press to select the DJ EFFECT type.

### **12 MUSIC, MOVIE/GAME, FOOTBALL**

Press to select the preset sound effect (page 30).

**Unit: PARTY CHAIN (page 34)**

Hold down to activate or deactivate the Party Chain function.

**Unit: BASS BAZUCA (page 30)**

- Press to reinforce the bass sound (“BASS BAZUCA” effect).
- Hold down to reduce the bass sound (“BASS CUT” effect).

**Unit: BASS BAZUCA indicator (page 30)**

## **13 OPTIONS**

Press to enter or exit options menu.

## **14 LED COLOR (page 35)**

Press to change the LED color for the speaker illumination.

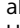

**Remote control: LED PATTERN (page 35)**

Press to change the LED pattern for the speaker illumination.

## **15 Remote control: CD**

Press to select the CD function.

**Remote control: USB**

Press to select the USB function. Repeatedly pressing the button allows you to select between USB ports ( A or  B). Select the port to which the USB device is connected.

**FUNCTION**

Press to select a function.

## **16 BLUETOOTH (page 25)**

- Press to select the BLUETOOTH function.
- Hold down to activate BLUETOOTH pairing in the BLUETOOTH function.

**BLUETOOTH indicator (page 24)**

**17 Unit: VOLUME/DJ CONTROL**

- Turn to adjust the volume.
- Turn to adjust the DJ EFFECT level (page 31).

You cannot use this knob to adjust the volume when the DJ EFFECT is activated.

**Remote control:  
DJ CONTROL +/-**

Press to adjust the DJ EFFECT level.

**Remote control: VOLUME +/-\***

Press to adjust the volume.

**18 SLEEP (page 35)**

Press to set the Sleep Timer.

**19 REPEAT/FM MODE**

- Press to select Repeat Play mode for the CD or USB function (page 18).
- Press to select the FM reception mode (monaural or stereo) when using the tuner function (page 23).

**20 DISPLAY**

Press to change the information on the display.

**21 SEARCH/MEMORY**

- Press to enter or exit search mode.
- Press to preset the radio station (page 23).

**22 CLEAR**

Press to delete the last step from the program list.

**23 TIMER MENU (page 14, 36)**

Press to set the clock and the timers.

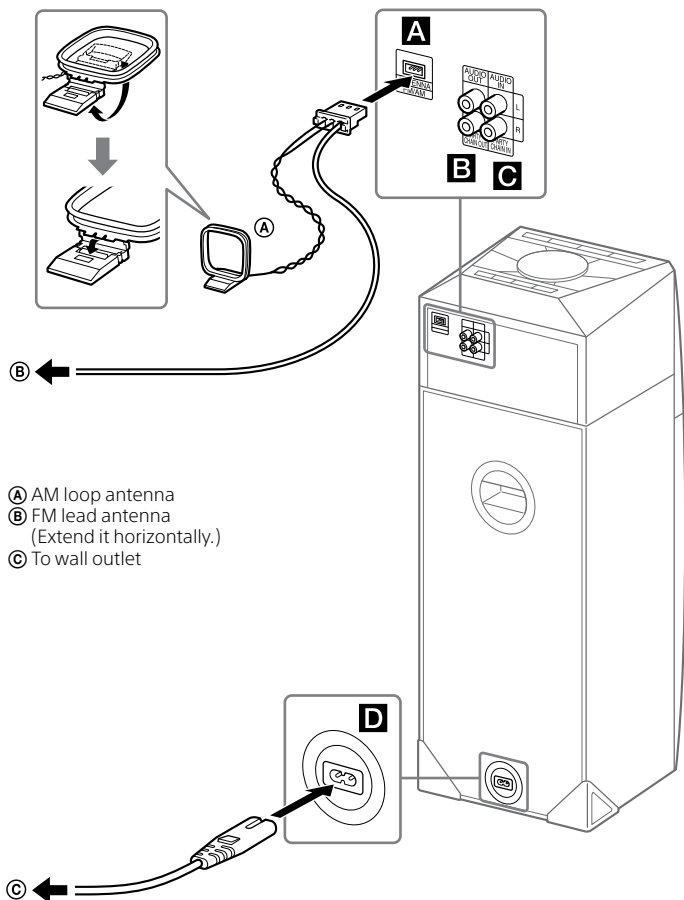
**24 PLAY MODE**

Press to select the play mode for playback of an AUDIO CD, MP3 disc or a USB device (page 17).

\* The VOLUME + and ► buttons have a tactile dot. Use the tactile dot as a reference when operating the system.

## Getting Started

### Hooking up the system securely



**A ANTENNA**

Find a location and an orientation that provide good reception and an orientation that provide good reception that you set up the antennas. Keep the antennas away from the AC power cord and the USB cable to avoid picking up noise.

**B AUDIO OUT/  
PARTY CHAIN OUT L/R jacks**

Use an audio cord (not supplied) to connect to the audio input jacks of an optional equipment (such as a VCR) or another audio system to create a Party Chain (page 32).

**C AUDIO IN/PARTY CHAIN IN  
L/R jacks**

Use an audio cord (not supplied) to connect to the audio output jacks of an optional equipment (such as a TV or an audio/video equipment) or another audio system to create a Party Chain (page 32).

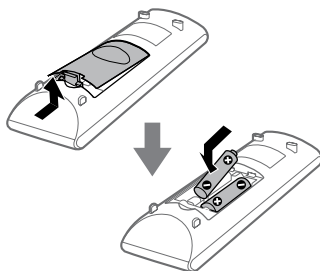
**D Power**

Connect the AC power cord (supplied) to the system, and then to the wall outlet.

When the AC power cord is connected, the demonstration (page 14) starts automatically. If you press I/⏻ to turn on the system, the demonstration ends.

**Inserting batteries**

Insert the two supplied R6 (size AA) batteries, matching the polarities shown below.

**Notes**

- Do not mix an old battery with a new one or mix different types of batteries.
- If you do not use the remote control for a long period of time, remove the batteries to avoid damage from battery leakage and corrosion.

---

## Setting the clock

**1** Press I/⏻ to turn on the system.

**2** Press **TIMER MENU**.

If "TIMER SEL" appears on the display, press ⬆/⬇ repeatedly to select "CLOCK SET," then press ⏻.

**3** Press ⬆/⬇ repeatedly to set the hour, then press ⏻.

**4** Press ⬆/⬇ repeatedly to set the minutes, then press ⏻.

### Note

You cannot set the clock in Power Saving Mode.

---

## Changing the display mode

**Press DISPLAY repeatedly while the system is turned off.**

Each time you press the button, the display mode changes as follows.

---

### Demonstration

The display scrolls messages about the main features of this system using the built-in LEDs for illumination.

---

### No display (Power Saving Mode)

The display is turned off to conserve power. The timer and clock continue to operate.

---

### Clock

The clock display automatically turns to Power Saving Mode after a few seconds.

---

## Disc/USB Playback

### Playing a disc

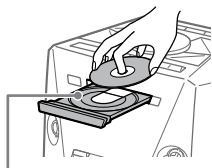
Playable disc types are as follows:

- AUDIO CDs on which CD-DA tracks are recorded in CD-DA disc format
- CD-R/CD-RW discs on which CD-DA tracks are recorded in CD-DA disc format
- CD-R/CD-RW discs on which MP3 audio files are recorded in ISO9660 Level 1/Level 2 or Joliet

**1** Press **CD**.

**2** Press **▲** on the unit.

**3** Load a disc with the label side facing up on the disc tray.



When you play back an 8 cm disc such as a CD single, place it on the inner circle of the tray.

**4** Press **▲** on the unit to close the disc tray.

Do not forcibly push the disc tray to close it as this may cause a malfunction.

**5** Press **▶** to start playback.

#### Notes on disc

- For AUDIO CD: This system can recognize up to 99 tracks.
- For MP3 discs: This system can recognize up to
  - 999 folders (including root and empty folders).
  - 999 MP3 files.

- 250 MP3 files in a folder.
- 8 folders levels (tree structure of files).
- CD-TEXT information is not supported.

### Before using the USB device with this system

Check the websites for the information about compatible USB devices (page 40).

#### To select the playback source or transfer destination (USB Memory Select)

If the USB device has more than one memory (for example, internal memory and a memory card), you can select which memory to use as a playback source or transfer destination.

#### Note

You cannot select a memory during playback or transfer. Make sure to select a memory before starting playback or transfer.

**1** Press **USB** repeatedly until “USB A” or “USB B” lights up on the display.

**2** Connect a USB device to the **USB A** or **USB B** port according to your selection in step 1.

**3** Press **OPTIONS** on the unit when playback is stopped.

**4** Press **▲/▼** to select “MEM SEL,” then press **○**.

**5** Press **▲/▼** to select the memory you want, then press **○**.

To exit the options menu, press **OPTIONS** on the unit.

---

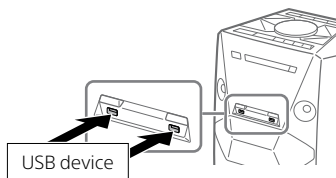
## Playing a USB device

The audio formats that can be played back by this system are as follows:

- MP3: file extension “.mp3”
- WMA: file extension “.wma”
- AAC: file extension “.m4a”, “.mp4” or “.3gp”

If the audio files have the above file extension but are not the respective formats, the system may produce noise or may malfunction.

- 1 Press USB repeatedly until “USB A” or “USB B” lights up on the display.**
- 2 Connect a USB device to the  $\psi$  A or  $\psi$  B port according to your selection in step 1.**



### Note

You can use a USB adaptor (not supplied) to connect the USB device to the unit if the USB device cannot be plugged into the  $\psi$  port.

- 3 Press  $\blacktriangleright$  to start playback.**

The audio files are played back in different orders depending on the play mode (page 17).

### Notes on USB device

- This system can recognize up to
  - 1,000 folders (including root folder and empty folders).
  - 3,000 audio files.
  - 250 audio files in a folder.

### Note

You can use your iPhone/iPod with this system via BLUETOOTH connection only.

---

## Searching for a track or audio file (Track Search)

- 1 Press SEARCH.**  
“SEARCH” lights up on the display.
- 2 (Except CD-DA discs) Press  $\uparrow$ / $\downarrow$  to select the folder you want, then press  $\oplus$  or  $\blacktriangleright$ .**  
To search in other folders, press  $\leftarrow$ , then select the folder you want.
- 3 Press  $\uparrow$ / $\downarrow$  to select the track or audio file you want, then press  $\oplus$  or  $\blacktriangleright$ .**  
The selected track or audio file starts playback.



## Using play mode

### Playing in original order (Normal Play)

Press PLAY MODE repeatedly when playback is stopped.

#### Disc playback modes and indicators

- No indicator (no display): Normal Play mode. The system plays all the tracks/files in sequential order.
  - FLDR\*: plays all audio files in the specified folder on the disc.
- \* When "FLDR" (folder play) is selected for AUDIO CD playback, playback performs Normal Play mode.

#### USB device playback modes and indicators

- ALL USB: plays all audio files on both USB devices sequentially.
- 1 USB: plays all audio files on one USB device sequentially.
- FLDR: plays all audio files in the specified folder on the USB device.

### Playing in random order (Shuffle Play)

Press PLAY MODE repeatedly when playback is stopped.

#### Disc playback modes and indicators

- SHUF: shuffles all audio files on the disc.
  - FLDR SHUF\*: shuffles all audio files in the specified folder on the disc.
- \* When "FLDR SHUF" (folder Shuffle Play) is selected for AUDIO CD playback, playback performs as normal Shuffle Play ("SHUF") mode.

#### USB device playback modes and indicators

- ALL USB SHUF: shuffles all audio files on both USB devices.
- 1 USB SHUF: shuffles all audio files on one USB device.
- FLDR SHUF: shuffles all audio files in the specified folder on the USB device.

#### Note

When you turn off the system, the selected Shuffle Play mode is cleared and the play mode returns to Normal Play.

## Creating your own program (Program Play)

You can make a program of up to 25 steps in the order you want them to be played back.

### 1 Select the function.

#### For CD function:

Press CD to select the CD function.

#### For USB function:

Press USB to select the USB function.

### 2 When playback is stopped, press PLAY MODE repeatedly until "PGM" lights up on the display.

### 3 (USB function only)

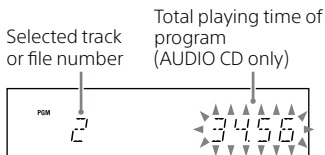
Press USB repeatedly to select the USB device you want ("USB A" or "USB B").

### 4 (Except CD-DA discs)

Press  $\square$  +/- repeatedly to select a folder.

If you want to program all files in the folder, press  $\oplus$  and proceed to step 6.

### 5 Press $\lll$ / $\ggg$ repeatedly to select the track or audio file you want, then press $\oplus$ .



"--.--" appears when the total playing time exceeds 100 minutes for an AUDIO CD or when you program an audio file.

### 6 Repeat steps 3 to 5 to program additional tracks or audio files.

### 7 Press $\blacktriangleright$ to start Program Play.

### To delete the last step from the program list

Press CLEAR when playback is stopped.

### To cancel Program Play

Press PLAY MODE repeatedly until "PGM" disappears from the display when playback is stopped.

### Notes

- (CD function only) The program list is cleared when you open the disc tray.
- (USB function only) The program list is cleared when you:
  - perform the erase operation.
  - remove the USB device.
  - change the selected USB memory.

## Playing repeatedly (Repeat Play)

Press REPEAT repeatedly.

- $\lll$ : repeats all tracks or audio files on a disc/USB device, or in the specified folder/program.
- $\lll$  1: repeats a track or audio file.

### Note on the USB device

The playback order for the system may differ from the playback order of the connected digital music player.

## USB Transfer

### Transferring music

You can transfer music from a sound source to a USB device connected to the  $\psi$  B port.

Audio formats used by the system for transfer vary depending on the source sound:

- When transferring CD-DA tracks on AUDIO CDs or from the radio, transferred files will be created in MP3 format.
- When transferring MP3 files on CD-R/CD-RW discs, transferred files will be created in MP3 format.
- When transferring audio files from a USB device (connected to the  $\psi$  A port), files are created in the same format (MP3, WMA or AAC) as that of the source audio files.

#### Notes

- Do not remove the USB device during transfer or erase operations. Doing so may corrupt the data on the USB device or damage the USB device itself.
- MP3/WMA/AAC files are transferred with the same bit rate as the original files.
- USB transfer and erase operations are disabled while the disc tray is open.

#### Note on copyright-protected content

The transferred music is limited to private use only. Use of the music beyond this limit requires permission of the copyright holders.

#### To select the playback source or transfer destination (USB Memory Select)

See page 15.

#### To select the bit rate

You can select a higher bit rate to transfer music with better quality. Use the buttons on the unit to perform this operation.

- 1 Press **OPTIONS**.
- 2 Press  $\blacktriangle/\blacktriangledown$  repeatedly to select "BIT RATE," then press **ENTER**.
- 3 Press  $\blacktriangle/\blacktriangledown$  repeatedly to select the bit rate you want, then press **ENTER**.
  - 128 KBPS: encoded MP3 files have smaller file size and lower audio quality.
  - 256 KBPS: encoded MP3 files have bigger file size but higher audio quality.

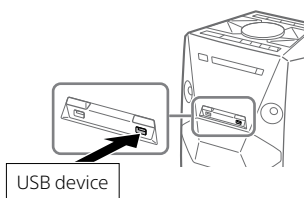
#### Note

The bit rate can be changed only when the sound source is CD-DA tracks on AUDIO CDs, radio sound, or optional equipment connected to the AUDIO IN L/R jacks.

## Transferring music from a disc or USB device

You can easily transfer all the music on a disc or USB A to USB B (Synchronized Transfer). You can also transfer a single track or audio file during playback (REC1 Transfer).

### 1 Connect a USB device to the $\psi$ B port.



#### Note

You can use a USB adaptor (not supplied) to connect the USB device to the unit if the USB device cannot be plugged into the  $\psi$  port.

### 2 Select the function.

#### Discs:

Press CD, then load the disc.

#### USB:

Press USB repeatedly until "USB A" lights up on the display, then connect the USB device containing audio files you want to transfer to  $\psi$  A port.

### 3 Prepare the sound source.

#### Synchronized Transfer:

When playback is stopped, press PLAY MODE repeatedly to select the play mode you want.

#### Notes

- If you start transferring in Shuffle Play ("FLDR SHUF"), the selected play mode changes to "FLDR" automatically.
- If you start transferring in Shuffle Play (except "FLDR SHUF"), Repeat Play or Program Play with no steps, the selected play mode changes to Normal Play automatically.

#### REC1 Transfer:

Select the track or audio file you want to transfer, then start playback.

### 4 Press REC TO USB B on the unit.

"PUSH ENTER" appears on the display.

### 5 Press ENTER on the unit.

The transfer starts when "DO NOT REMOVE" appears on the display.

Do not remove the USB device until the transfer is complete.

When the transfer is complete, the system performs as follows:

#### Synchronized Transfer:

When the transfer is complete, the disc or USB device stops automatically.

#### REC1 Transfer:

The transfer is completed automatically, but the disc or USB device continues to play the next track or file.

### To stop transfer

Press ■.

## Transferring analog audio (Analog Transfer)

You can transfer sound from an analog audio source (other than CD, USB or BLUETOOTH function) to a USB device.

Use the buttons on the unit to perform this operation.

**1 Connect a USB device to the USB port (page 20).**

**2 Prepare for the source.**

### To transfer a radio program

See "Listening to the radio" (page 23) to tune to the desired station.

### To transfer sound from a connected optional equipment

See "Using optional equipment" (page 37) to start playing the connected equipment.

**3 Press REC TO USB B.**

"PUSH ENTER" appears on the display.

**4 Press ENTER.**

The transfer starts when "DO NOT REMOVE" appears on the display.

**5 Press ■ to stop transfer.**

An MP3 file is created.

## To transfer sound as a new MP3 file during transfer

Press REC TO USB B during Analog Transfer.

"NEW TRACK" appears on the display.

### Notes

- While an MP3 file is being created, transfer is disabled.
- If you press REC TO USB B again after a few seconds, a new MP3 file can be created.
- If the transfer is not stopped, a new MP3 is created automatically approximately 1 hour after the transfer begins.

## Erasing audio files or folders from a USB device

**1 Press USB repeatedly until "USB A" or "USB B" lights up on the display when playback is stopped.**

**2 Press ◀▶ or ◻ +/- repeatedly to select the audio file or folder.**

**3 Press OPTIONS on the unit.**

**4 Press ↕ to select "ERASE," then press ⊖.**

"FLDR ERASE" or "TRK ERASE" appears on the display.

**5 Press ⊖.**

"COMPLETE" appears on the display.

### Note

You cannot erase audio files or folders when Shuffle Play or Program Play mode has been selected. Set the play mode to Normal Play before erasing.

## Folder and file generation rules

When transferring to a USB device, a "MUSIC" folder is created directly below "ROOT." Folders and files are generated within this "MUSIC" folder according to the transfer method and source as follows:

### Synchronized Transfer<sup>1)</sup>

#### ■ When transferring CD-DA tracks from an AUDIO CD

Folder name: "CDDA0001"<sup>2)</sup>  
File name: "TRACK001"<sup>2)</sup>

#### ■ When transferring MP3 files from a disc or MP3/WMA/AAC files from a USB device

Folder name: Same as the source  
File name: Same as the source

### REC1 Transfer

#### ■ When transferring a CD-DA track from an AUDIO CD

Folder name: "REC1-CD"  
File name: "TRACK001"<sup>2)</sup>

#### ■ When transferring an MP3 file from a disc or MP3/WMA/AAC file from a USB device

Folder name: "REC1-MP3"  
File name: Same as the source

### Analog Transfer<sup>3)</sup>

#### ■ When transferring an FM program

Folder name: "TUFM0001"<sup>2)</sup>  
File name: "TRACK001"<sup>2)</sup>

#### ■ When transferring an AM program

Folder name: "TUAM0001"<sup>2)</sup>  
File name: "TRACK001"<sup>2)</sup>

#### ■ When transferring sound from the connected optional equipment

Folder name: "EXAU0001"<sup>2)</sup>  
File name: "TRACK001"<sup>2)</sup>

- 1) In Program Play mode, the folder name is "PGM\_xxxx," and the file name depends on the music source (AUDIO CD or audio files).
- 2) Folder and file numbers are assigned serially thereafter.
- 3) When performing transfer separation (see "To transfer sound as a new MP3 file during transfer" on page 21), newly created MP3 files are saved in the same folder that is created during the first transfer.

#### Notes on transferring

- While transferring (except analog transfer), no sound is output.
- CD-TEXT information is not transferred to the created MP3 files.
- The transfer stops automatically if:
  - the USB device runs out of space during transfer.
  - the number of audio files or folders on the USB device reaches the limit that the system can recognize (page 16).
- If a folder or file that you are trying to transfer already exists on the USB device with the same name, a sequential number is added after the name without overwriting the original folder or file.
- You cannot perform the following operations during transfer:
  - Eject the disc.
  - Select another track or file.
  - Pause playback or find a point in the track or file.
  - Change the function or tuner band.
- When transferring music to a Walkman® using "Media Manager for WALKMAN," be sure to transfer in MP3 format.
- When connecting a Walkman® to the system, be sure to connect after the display "Creating Library" or "Creating Database" on the Walkman® has disappeared.

## Listening to the radio

**1** Press **FUNCTION** repeatedly to select the tuner function (“**TUNER FM**” or “**TUNER AM**”).

**2** For automatic scanning:

Hold down **TUNING+/-** until the frequency begins to change on the display.

Scanning stops automatically and “**TUNED**” lights up on the display when a station is found.

If “**TUNED**” does not light up and scanning does not stop, press **■** to stop scanning. Then, perform manual tuning (below).

**For manual tuning:**

Press **TUNING+/-** repeatedly to tune to the station you want.

### Note

When you tune to an FM station that provides RDS services, information such as the service name or station name is provided by broadcasts. You can check the RDS information by pressing **DISPLAY** repeatedly.

### Hint

To reduce static noise on a weak FM stereo station, press **FM MODE** repeatedly until “**MONO**” lights up on the display. You will lose the stereo effect, but reception will improve.

## To change the AM tuning interval

The default setting for AM tuning interval is 9 kHz (or 10 kHz for some areas).

Use the buttons on the unit to perform this operation.

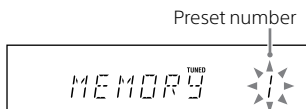
Note that you cannot change the AM tuning interval in Power Saving Mode.

- 1** Press **FUNCTION** repeatedly to select “**TUNER AM**.”
- 2** Press **I/⏻** to turn off the system.
- 3** While holding down **▶▶I**, press **I/⏻**.  
“**9K STEP**” or “**10K STEP**” appears on the display.  
When you change the interval, all the AM preset stations are erased.

## Presetting radio stations

You can store up to 20 FM and 10 AM stations as your favorite stations.

- 1** Tune to the station you want.
- 2** Press **MEMORY**.



- 3** Press **TUNING+/-** repeatedly to select the preset number you want, then press **⊖**.  
“**COMPLETE**” appears on the display and the station is stored.  
If another station is already assigned to the selected preset number, that station is replaced by the new one.

## To listen to the preset station

Press **PRESET+/-** (or **□+/-** on the unit) repeatedly to select the preset number you want.

## BLUETOOTH

### About the BLUETOOTH wireless technology

BLUETOOTH wireless technology is a short-range wireless technology that enables wireless data communication between digital devices. BLUETOOTH wireless technology operates within a range of about 10 meters (33 feet).

#### Supported BLUETOOTH version, profiles and codecs

Supported BLUETOOTH version:

- BLUETOOTH Standard version 3.0

Supported BLUETOOTH profiles:

- A2DP (Advanced Audio Distribution Profile)
- AVRCP 1.3 (Audio Video Remote Control Profile)
- SPP (Serial Port Profile)

Supported BLUETOOTH codecs:

- SBC (Sub Band Codec)
- AAC (Advanced Audio Coding)

### Listening to music wirelessly on a BLUETOOTH device

You can listen to music from your BLUETOOTH device over a wireless connection.

Check the websites for the information about compatible BLUETOOTH devices (page 40).

#### About the BLUETOOTH indicator

The BLUETOOTH indicator lights up or flashes in blue to show the BLUETOOTH status.

System status	Indicator status
BLUETOOTH standby	Flashes slowly
BLUETOOTH pairing	Flashes quickly
BLUETOOTH connecting	Flashes
BLUETOOTH connection is established	Lights up



## Pairing this system with a BLUETOOTH device

Pairing is an operation where BLUETOOTH devices register with each other beforehand. Once a pairing operation is performed, it does not need to be performed again. If your device is an NFC-compatible smartphone, the manual pairing procedure is not necessary.

- 1 Place the BLUETOOTH device within 1 meter (3 feet) from the system.**
- 2 Press BLUETOOTH on the unit to select the BLUETOOTH function.**  
"BLUETOOTH" appears on the display.  
**Note**  
If the system is connected to a BLUETOOTH device, press BLUETOOTH to disconnect the BLUETOOTH device.
- 3 Hold down BLUETOOTH on the unit for 2 seconds or more.**  
"PAIRING" flashes on the display.
- 4 Perform the pairing procedure on the BLUETOOTH device.**  
For details, refer to the operating instructions of your BLUETOOTH device.
- 5 Select the model number of the unit on the display of the BLUETOOTH device.**

For example, select "SONY:MHC-V5."  
If passkey is required on the BLUETOOTH device, enter "0000".

## 6 Perform the BLUETOOTH connection on the BLUETOOTH device.

When pairing is completed and the BLUETOOTH connection is established, BLUETOOTH device name appears on the display. Depending on the BLUETOOTH device, connection may start automatically after pairing is completed.

You can check the BLUETOOTH device address by pressing DISPLAY repeatedly.

### Notes

- You can pair up to 9 BLUETOOTH devices. If the 10th BLUETOOTH device is paired, the oldest paired device will be deleted.
- "Passkey" may be called "Passcode," "PIN code," "PIN number" or "Password," etc., depending on the device.
- The pairing standby status of the system is canceled after about 5 minutes. If pairing is not successful, repeat from step 1.
- If you want to pair with another BLUETOOTH device, repeat steps 1 to 6.

### To cancel the pairing operation

Hold down BLUETOOTH on the unit for 2 seconds or more until "BLUETOOTH" appears on the display.

## Connecting a smartphone with one touch (NFC)

When you touch the system with an NFC-compatible smartphone, the system automatically:

- turns on in the BLUETOOTH function.
- completes pairing.
- completes the BLUETOOTH connection.

### What is “NFC”?

NFC (Near Field Communication) is a technology enabling short-range wireless communication between various devices, such as mobile phones and IC tags. Thanks to the NFC function, data communication can be achieved easily just by touching the designated touchpoint on the NFC-compatible devices.

### 1 Download and install the “NFC Easy Connect” app.

Download the free Android™ app from Google Play™ by searching for “NFC Easy Connect” or access it by using the two-dimensional code below. Data communication fees may be charged.

#### Two-dimensional code\* for direct access

\* Use a two-dimensional code reader app.



### Notes

- The App may not be available in some countries and/or regions.
- Depending on your smartphone, you can use the NFC function without installing the app. In this case, the operations and specifications may differ. For details, refer to the operating instructions of your smartphone.

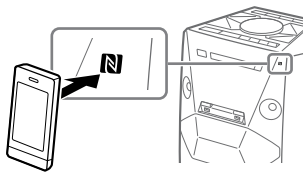
### Compatible smartphones

Smartphones with a built-in NFC function (OS: Android 2.3.3 or later, excluding Android 3.x)

### 2 Start the “NFC Easy Connect” app on the smartphone.

Make sure that the application screen is displayed.

### 3 Touch the smartphone to the N-Mark on the system until the smartphone vibrates.



Complete the connection by following the instructions displayed on the smartphone.

When the BLUETOOTH connection is established, the BLUETOOTH indicator stops flashing and remains light up. BLUETOOTH device name appears on the display.

You can switch the sound source from the smartphone to another NFC-compatible BLUETOOTH device.

For details, refer to the operating instructions of your BLUETOOTH device.

**Hint**

If pairing and the BLUETOOTH connection fail, do the following.

- Relaunch “NFC Easy Connect” and move the smartphone slowly over the N-Mark.
- Remove the case from the smartphone if using a commercially available smartphone case.

## Listening to music on a BLUETOOTH device

You can operate a BLUETOOTH device by connecting the system and the BLUETOOTH device using AVRCP.

Check the following before playing music:

- The BLUETOOTH function of the BLUETOOTH device is turned on.
- Pairing has been completed.

### To play music on a NFC-compatible BLUETOOTH device

#### 1 Press BLUETOOTH on the unit to select the BLUETOOTH function.

“BLUETOOTH” appears on the display.

#### 2 Establish connection with the BLUETOOTH device.

The last connected BLUETOOTH device will be connected automatically.

Perform the BLUETOOTH connection from the BLUETOOTH device if the device is not connected.

Once the connection is established, the BLUETOOTH device name appears on the display.

#### 3 Press ►.

Depending on the BLUETOOTH device,

- you may need to press ► twice.
- you may need to start playback of an audio source on the BLUETOOTH device.

**Notes**

- When the system is not connected to any BLUETOOTH device, the system will connect and playback from the last connected BLUETOOTH device automatically when you press ►.
- If you try to connect another BLUETOOTH device to the system, the current connected BLUETOOTH device will be disconnected.

### To play music on a NFC-compatible smartphone

Touch the smartphone to the N-Mark on the system to establish the BLUETOOTH connection. Start playback of an audio source on the smartphone. For details on playback, refer to the operating instructions of your smartphone.

### To terminate the BLUETOOTH connection

#### ■ For NFC-incompatible BLUETOOTH devices

Press BLUETOOTH on the unit. “BLUETOOTH” appears on the display.

Depending on the BLUETOOTH device, the BLUETOOTH connection may be terminated automatically when you stop playback.

#### ■ For NFC-compatible smartphones

Touch the smartphone to the N-Mark on the system again.

## Erasing all the pairing registration information

Use the buttons on the unit to perform this operation.

### 1 Press **BLUETOOTH** to select the **BLUETOOTH** function.

"BLUETOOTH" appears on the display.

If the system is connected to a BLUETOOTH device, the BLUETOOTH device name appears on the display. Press BLUETOOTH to terminate the BLUETOOTH connection.

### 2 Hold down **■** and **FLANGER** for about 3 seconds.

"BT HISTORY" and "CLEAR" appear on the display and all the pairing information is erased.

## Setting the BLUETOOTH audio codecs

You can select the BLUETOOTH audio codecs when the connected BLUETOOTH device supports Advanced Audio Coding (AAC).

### 1 Press **OPTIONS** on the unit.

### 2 Press **▲/▼** repeatedly to select "**BT AAC,**" then press **⊖**.

### 3 Press **▲/▼** repeatedly to select "**ON**" or "**OFF,**" then press **⊖**.

- **ON:** Select this setting if the BLUETOOTH device supports Advanced Audio Coding (AAC).
- **OFF:** Select this setting if the BLUETOOTH device only supports Sub Band Codec (SBC).

### Notes

- You can enjoy high quality sound if the AAC is selected. In case you cannot listen to AAC sound from your device, select "OFF."
- If you change this setting while the system is connected to a BLUETOOTH device, the BLUETOOTH device will be disconnected. To connect to the BLUETOOTH device, perform the BLUETOOTH connection again.

---

## Setting the BLUETOOTH standby mode

The BLUETOOTH standby mode enables the system to turn on automatically when you establish the BLUETOOTH connection with a BLUETOOTH device.

- 1 Press **OPTIONS** on the unit.**
- 2 Press **▲/▼** repeatedly to select **"BT STBY,"** then press **⊖**.**
- 3 Press **▲/▼** repeatedly to select **"ON"** or **"OFF,"** then press **⊖**.**
- 4 Press **I/⏻** to turn off the system.**  
When the BLUETOOTH standby mode is set to on, the system waits for a BLUETOOTH connection even when the system has been turned off. When a BLUETOOTH connection is established, the system turns on automatically.

### Note

The system cannot enter the BLUETOOTH standby mode if the pairing registration information has been erased.

---

## Using "SongPal" via BLUETOOTH

### About App

A dedicated app for this model is available on both Google Play and App Store. Search for "SongPal" and download the free app to find out more about the convenient features.

BLUETOOTH technology works with iPhone 5s, iPhone 5c, iPhone 5, iPhone 4s, iPhone 4, iPhone 3GS, iPod touch (5th generation), iPod touch (4th generation).

## Sound Adjustment

### Adjusting the sound

To	Do this
Reinforce the bass and create a more powerful sound	Press BASS BAZUCA on the unit. The BASS BAZUCA indicator lights up.
Reduce the bass sound (BASS CUT)	Hold down BASS BAZUCA on the unit for 2 seconds or more. To cancel the BASS CUT effect, press BASS BAZUCA again.
Select a preset sound effect	Press MUSIC, MOVIE/GAME or FOOTBALL. To cancel preset sound effect, press MUSIC repeatedly to select "FLAT."

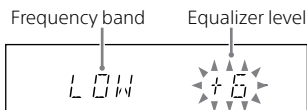
#### Notes

- When BASS CUT effect is turned on, the BASS BAZUCA indicator flashes and "BASS CUT" appears on the display every 10 seconds.
- The BASS CUT effect is turned off automatically when you turn off the system.

### Creating your own sound effect

You can raise or lower the levels of specific frequency bands, then store the setting in the memory as "CUSTOM EQ."

- 1 Press **OPTIONS** on the unit.
- 2 Press **▲/▼** repeatedly to select "EQ EDIT," then press **⊕**.
- 3 Press **▲/▼** repeatedly to adjust the equalizer level, then press **⊕**.



- 4 Repeat step 3 to adjust the level of other frequency bands and surround effect.

The user equalizer setting is stored when "CUSTOM EQ" appears on the display.

#### To select the user equalizer setting

Press **MUSIC** repeatedly to select "CUSTOM EQ."

---

# Creating a party atmosphere (DJ EFFECT)

## 1 Press the following button to select the effect type.

The selected button lights up and the effect is activated.

- **FLANGER:** Create a deep flanging effect that is similar to the roar of a jet plane.
- **ISOLATOR:** Isolate a specific frequency band by adjusting the other frequency bands. This is useful when you want to focus on the vocals.
- **PAN:** Create a feeling that the sound is moving around the speakers between left and right channels.
- **WAH:** Create a special effect of “Wah-wah” sound by moving the frequency of a filter up and down automatically.

## 2 Press DJ CONTROL +/- to adjust the effect level.

### To turn off the effect

Press the selected effect button again.

### Notes

- The DJ EFFECT is automatically turned off when you turn off the system or change the function or tuner band.
- The DJ EFFECT does not affect the transferred audio files. Transferred audio files will be generated without the DJ EFFECT even if you have activated it.
- You cannot use VOLUME/DJ CONTROL on the unit to adjust the volume when the DJ EFFECT is activated. Press VOLUME +/- on the remote control to adjust the volume.

## Other Operations

### Using the Party Chain function

You can connect multiple audio systems in a chain to create a more interesting party environment and to produce higher sound output. A system in the chain will activate the Party Chain function as "Party Host" and share the music. Other systems will become "Party Guests" and play the same music as that being played by the "Party Host."

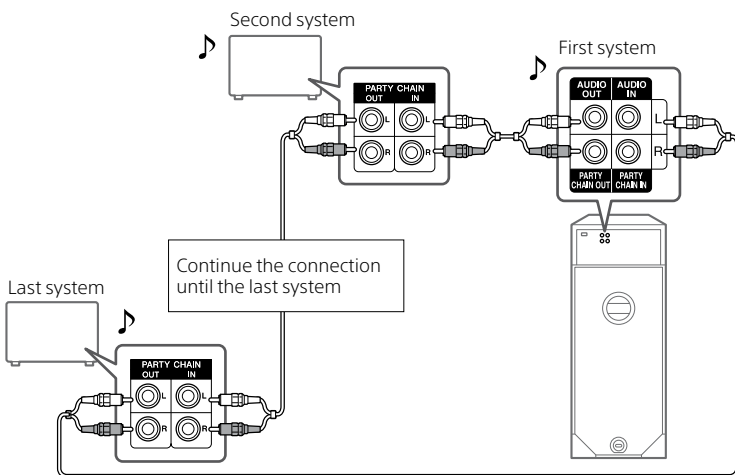
#### Setting up the Party Chain

You can set up a Party Chain by connecting all the systems using audio cords (not supplied).

Before connecting cords, be sure to disconnect the AC power cord.

#### **A** If all the systems are equipped with Party Chain function

Example: When connecting using this system as the first system

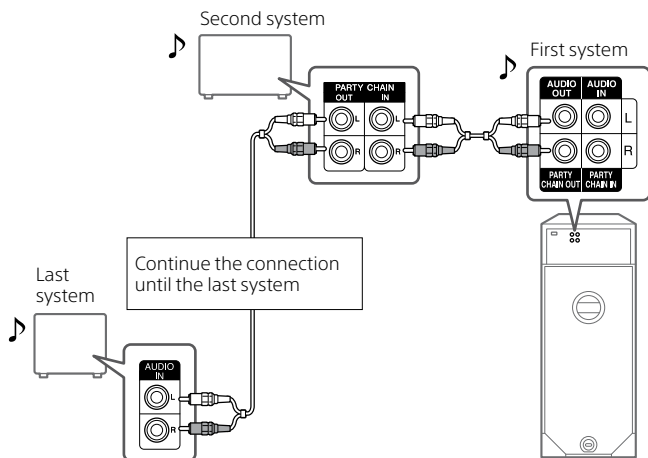


- Any system can become a Party Host in this connection.
- You can change the Party Host to a new Party Host after the Party Chain function is activated on another Party Host. For details, see "To select a new Party Host" (page 34).
- In this connection, the last system must be connected to the first system.



## B If one of the system is not equipped with Party Chain function

Example: When connecting using this system as the first system



- You can connect the system which is not equipped with Party Chain function at the last system. Be sure to select the audio in function on this last system.
- You must select the first system as Party Host so that all systems are playing the same music when Party Chain function is activated.
- In this connection, the first system and the last system are not connected.

## Enjoying the Party Chain

Perform the following procedure to activate the Party Chain function.

**1 Plug in the AC power cord and turn on all the systems.**

**2 Adjust the volume on each system.**

**3 Activate the Party Chain function on the system to be used as the Party Host.**

Press FUNCTION on the Party Host repeatedly to select the function you want (except the audio in function), then start playback.

Hold down MUSIC/PARTY CHAIN on the Party Host for 2 seconds.

"PARTY CHAIN" appears on the display for 2 seconds. The Party Host starts the Party Chain, and other systems become Party Guests automatically. All systems play the same music as that being played by the Party Host.

### Notes

- Depending on the total unit of systems you have connected, Party Guests may take some time to start playing the music.
- For detailed operation on other systems, refer to the operating instructions of the systems.

### To select a new Party Host

Repeat step 3 of "Enjoying the Party Chain" on the system to be used as a new Party Host. The current Party Host becomes Party Guest automatically. All systems play the same music as that being played by the new Party Host.

## To deactivate the Party Chain

Hold down MUSIC/PARTY CHAIN on the Party Host for 2 seconds.

### Notes

- Changing the volume level and sound effect on the Party Host will not affect the output on the Party Guests.
- The Party Guests continue playing the music source from the Party Host even if you change the function on any of the Party Guests. However, you can adjust the volume and change the sound effect on any of the Party Guests.
- When you use the microphone on Party Host, the sound will not be output from Party Guests.
- The system which is not equipped with Party Chain function cannot become a Party Host.

---

## Setting the Party Chain sound mode

You can set the sound mode when the Party Chain function is activated.

**1 Press OPTIONS on the unit.**

**2 Press  $\uparrow/\downarrow$  repeatedly to select "P.CHAIN MODE," then press  $\odot$ .**

**3 Press  $\uparrow/\downarrow$  repeatedly to select "STEREO," "RIGHT CH" or "LEFT CH," then press  $\odot$ .**

- STEREO: outputs the stereo sound.
- RIGHT CH: outputs the monaural sound of the right channel.
- LEFT CH: outputs the monaural sound of the left channel.

To exit the options menu, press OPTIONS on the unit.

---

## Viewing information on the display

Press **DISPLAY** repeatedly when the system is turned on.

You can view the information as follows:

- For CD-DA tracks on an AUDIO CD:
  - The elapsed playing time and remaining playing time during playback.
  - The total playing time when playback is stopped.
- For audio files on a disc or USB device:
  - The elapsed playing time, file name and folder name.
  - The title, artist and album information (ID3 information).

### Note

The elapsed playing time of an audio file encoded using a VBR (variable bit rate) is not displayed correctly.

---

## Changing the illumination pattern and color

- 1** Press **LED PATTERN** or **LED COLOR** to show the current setting.
- 2** Press **LED PATTERN** or **LED COLOR** repeatedly to select the illumination pattern or color. To turn off the illumination, press **LED PATTERN** repeatedly to select "LED OFF."

### Note

If the illumination (LED) brightness is glaring, switch on the room lights or turn off the LED.

---

## Using the timers

The system offers three timer functions. You cannot activate both the Play Timer and the Recording Timer at the same time. If you use either with the Sleep Timer, the Sleep Timer has priority.

### Sleep Timer

You can fall asleep while listening to music. The system turns off after the preset time.

**Press SLEEP repeatedly to select the desired time.**

To cancel Sleep Timer, press **SLEEP** repeatedly to select "OFF."

### Hint

To check the remaining time before the system turns off, press **SLEEP**.

## Play Timer/Recording Timer

Make sure you have set the clock.

### Play Timer:

You can wake up to disc, tuner or USB device at a preset time.

### Recording Timer:

You can transfer music from a preset radio station to a USB device at a specified time.

## 1 Prepare the sound source.

### For Play Timer:

Prepare the sound source, then press VOLUME +/- to adjust the volume.

When selecting a disc or USB device as a sound source, and you want to start from a specific track or file, create your own program (page 18).

### For Recording Timer:

Tune to the radio station (page 23).

## 2 Press TIMER MENU.

## 3 Press $\blacktriangle/\blacktriangledown$ repeatedly to select "PLAY SET" or "REC SET," then press $\odot$ .

## 4 Set the time to start playback or transfer.

Press  $\blacktriangle/\blacktriangledown$  repeatedly to set the hour/minute, then press  $\odot$ .

## 5 Use the same procedure as in step 4 to set the time to stop playback or transfer.

## 6 Press $\blacktriangle/\blacktriangledown$ repeatedly to select the sound source you want, then press $\odot$ .

For Recording Timer, connect a USB device to the  $\psi$ B port after selecting the sound source.

## 7 Press I/ $\odot$ to turn off the system.

### Note

If the system remains on, the timers will not take effect.

## To check the timer setting or activate the timer again

### 1 Press TIMER MENU.

"TIMER SEL" flashes on the display.

### 2 Press $\odot$ .

### 3 Press $\blacktriangle/\blacktriangledown$ repeatedly to select "PLAY SEL" or "REC SEL," then press $\odot$ .

## To cancel the timer

Repeat the same procedure as "To check the timer setting or activate the timer again" and select "TIMER OFF" in step 3, then press  $\odot$ .

### Notes

- The system turns on before the preset time. If the system is already turned on at the preset time or if "STANDBY" flashes on the display, the Play Timer and the Recording Timer will not be activated.
- Do not operate the system from the time the system turns on until the playback or transfer starts.

---

## Using optional equipment

- 1 Press **VOLUME -** repeatedly until “**VOLUME MIN**” appears on the display.
- 2 Connect an optional equipment to **AUDIO IN L/R** jacks.
- 3 Press **FUNCTION** repeatedly to select the audio in function which corresponds to the connected equipment.
- 4 Start playing the connected equipment.
- 5 Press **VOLUME +** repeatedly to adjust the volume.

### **Note**

The system may enter standby mode automatically if the volume level of the connected equipment is too low. Adjust the volume level of the equipment. If you turn off automatic standby function, see “Setting the automatic standby function” (page 38).

---

## Deactivating the buttons on the unit (Child Lock)

You can deactivate the buttons on the unit (except **I/⏻**) to prevent misoperation, such as child mischief.

### **Hold down ■ on the unit for more than 5 seconds.**

“**CHILD LOCK**” and “**ON**” appear on the display.

You can only operate the system using the buttons on the remote control.

To turn off the Child Lock function, hold down **■** on the unit for more than 5 seconds until “**CHILD LOCK**” and “**OFF**” appear on the display.

### **Note**

Child Lock function will be turned off automatically when you disconnect the AC power cord.

---

## Setting the automatic standby function

This system is equipped with an automatic standby function. With this function, the system enters standby mode automatically in about 15 minutes when there is no operation or audio signal output. By default, the automatic standby function is turned on.

- 1 Press **OPTIONS** on the unit.**
- 2 Press **▲/▼** repeatedly to select "AUTO STBY," then press **⊕**.**
- 3 Press **▲/▼** repeatedly to select "ON" or "OFF."**

### Notes

- The message "AUTO STBY" flashes on the display about 2 minutes before entering standby mode.
- The automatic standby function does not work in the tuner function.
- The system may not enter standby mode automatically in the following cases:
  - when an audio signal is detected.
  - during playback of audio files.
  - while the preset Play Timer, Recording Timer or Sleep Timer is in process.

## Additional Information

### Playable discs

- AUDIO CD
- CD-R/CD-RW
  - CD-DA tracks in AUDIO CD format
  - MP3 files that conforms to ISO9660 Level 1/Level 2, or Joliet (expansion format).

### Notes

- MP3 (MPEG 1 Audio Layer-3) is a standard format defined by ISO (International Organization for Standardization) which compresses audio data. MP3 files must be in MPEG 1 Audio Layer-3 format.
- The system can only play back MP3 files that have a file extension of ".mp3."

### Discs that cannot be played back

- CD-ROM
- CD-R/CD-RW which has the following conditions:
  - Recorded in MP3 PRO format
  - Recorded in multisession that was not ended by "closing the session"
  - Recorded with an incompatible recording device
  - Poor recording quality
  - Scratches or dirty
  - Finalized incorrectly
- Discs of non-standard shape (e.g., heart, square, star, etc.)
- Discs that have adhesive tape, paper, or sticker attached to them
- Rental or used discs with attached seals where the glue extends beyond the seal
- Discs that have labels printed using ink that feels tacky when touched

### Note on DualDiscs

A DualDisc is a two sided disc product which mates DVD recorded material on one side with digital audio material on the other side. However, since the audio material side does not conform to the Compact Disc (CD) standard, playback on this product is not guaranteed.

### Music discs encoded with copyright protection technologies

This product is designed to play back discs that conform to the Compact Disc (CD) standard. Recently, various music discs encoded with copyright protection technologies are marketed by some record companies. Please be aware that among those discs, there are some that do not conform to the CD standard and may not be playable by this product.

### Notes on playing multisession discs

- This system can play back multisession discs when an MP3 file is contained in the first session. Any subsequent MP3 files recorded in later sessions can also be played back (If later sessions contain AUDIO CD format, the system cannot play back these multisession discs).
- If the first session is recorded in AUDIO CD format, only the first session will be played back.

---

## Websites for compatible devices and dedicated applications

Check the websites below for the latest information about compatible USB and BLUETOOTH devices as well as available applications.

For customers in Latin America:  
<<http://esupport.sony.com/LA>>

For customers in the United States:  
<<http://www.esupport.sony.com/>>

---

## Troubleshooting

Should you encounter a problem with your system, find your problem in the troubleshooting checklist below and take the corrective action.

If the problem persists, consult your nearest Sony dealer.

Note that if the service personnel changes some parts during repair, these parts may be retained.

### If "PROTECT XX" (X is a number) appears on the display

Immediately unplug the AC power cord, and check the following items.

- Is anything blocking the ventilation holes of the system?
- Is the USB port short-circuited?

After you have checked these above items and found no problems, reconnect the AC power cord, and turn on the system. If the issue persists, contact your nearest Sony dealer.

---

## General

**The system has entered standby mode.**

- This is not a malfunction. The system enters standby mode automatically in about 15 minutes when there is no operation or audio signal output (page 38).



**The clock or timer setting is canceled.**

- The AC power cord is disconnected or a power failure occurred. Set the clock (page 14) and timer (page 35) again.

**There is no sound.**

- Adjust the volume.
- Check the connection of the optional equipment, if any (page 12).
- Turn on the connected equipment.
- There is no audio output available during Recording Timer.

**There is severe hum or noise.**

- Move the system away from sources of noise.
- Connect the system to a different wall outlet.
- Install a noise filter (commercially available) to the AC power cord.
- Turn off surrounding electrical equipment.

**The timer does not function.**

- Check the timer setting and set the correct time (page 35).
- Cancel the Sleep Timer function (page 35).

**The remote control does not function.**

- Remove the obstacles between the remote control and the unit.
- Move the remote control closer to the unit.
- Point the remote control at the unit's sensor.
- Replace the batteries (R6/size AA).
- Move the unit away from the fluorescent light.

**There is acoustic feedback.**

- Reduce the volume.

**"CHILD LOCK" appears when you press any button on the unit.**

- Set the Child Lock function to off (page 37).

**Disc player**

---

**The disc tray does not open and "LOCKED" appears on the display.**

- Consult your nearest Sony dealer or local authorized Sony service facility.

**The disc tray does not close.**

- Load the disc correctly.

**The disc does not eject.**

- You cannot eject the disc during CD-USB Synchronized Transfer or REC1 Transfer. Press ■ to cancel the transfer, then press ▲ on the unit to eject the disc.
- Consult your nearest Sony dealer.

**Playback does not start.**

- Reload the disc.
- Load the disc that this system can play back (page 39).
- Wipe the disc clean (page 46).
- Remove the disc and wipe away the moisture on the disc, then leave the system turned on for a few hours until the moisture evaporates.

**The sound skips.**

- Wipe the disc clean (page 46).
- Reload the disc.
- Move the unit to a place with no vibration (e.g., on top of a stable stand).

**Playback does not start from the first track.**

- Set the play mode to Normal Play (page 17).

### **The folder name, track name, file name and ID3 tag characters do not appear properly.**

- The ID3 version is not in Version 1 (1.0/1.1) or Version 2 (2.2/2.3).
- The character codes that can be displayed by this system are as follows:
  - Upper cases (A to Z)
  - Numbers (0 to 9)
  - Symbols (<>\*+,[ ]\ \_)Other characters appear as “\_”.

### **USB device**

---

#### **Transferring results in an error.**

- You are using an unsupported USB device. Check the information on the website about compatible USB devices (page 40).
- The USB device is not formatted correctly. Refer to the operating instructions of the USB device on how to format.
- Turn off the system and remove the USB device. If the USB device has a power switch, turn the USB device off and on again after removing it from the system. Then, perform the transfer again.
- If the transfer and erase operations are repeated multiple times, the file structure within the USB device becomes fragmented. Refer to the operating instructions supplied with the USB device on how to deal with this problem.
- The USB device was disconnected or the power was turned off during transfer. Delete the partially-transferred file, and perform the transfer again. If this does not fix the problem, the USB device may be broken. Refer to the operating instructions of the USB device on how to deal with this problem.

### **Audio files or folders on the USB device cannot be erased.**

- Check if the USB device is write-protected.
- The USB device was disconnected or the power was turned off during the erase operation. Delete the partially-erased file. If this does not fix the problem, the USB device may be broken. Refer to the operating instructions of the USB device on how to deal with this problem.

#### **There is no sound.**

- The USB device is not connected correctly. Turn off the system and reconnect the USB device, then turn on the system.

#### **There is noise, skipping, or distorted sound.**

- You are using an unsupported USB device. Check the information on the website about compatible USB devices (page 40).
- Turn off the system and reconnect the USB device, then turn on the system.
- The music data itself contains noise, or the sound is distorted. Noise may have entered during the transfer process. Delete the file, and try transfer again.
- The bit rate used in encoding an audio file was low. Send an audio file with higher bit rate to the USB device.

#### **“READING” is displayed for an extended time, or it takes a long time before playback starts.**

- The reading process can take a long time in the following cases.
  - There are many folders or files on the USB device (page 16).
  - The file structure is extremely complex.

- The memory capacity is excessive.
- The internal memory is fragmented.

**“OVER CURRENT” appears.**

- A problem has been detected with the level of electrical current from the  $\Psi$  A port or  $\Psi$  B port. Turn off the system and remove the USB device from the port. Make sure there is no problem with the USB device. If this display pattern persists, contact your nearest Sony dealer.

**Erroneous display.**

- The data stored in the USB device may have been corrupted, perform the transfer again.
- The character codes that can be displayed by this system are as follows:
  - Upper cases (A to Z)
  - Numbers (0 to 9)
  - Symbols (<> \* +, [ ] \ \_)
 Other characters appear as “ \_ ”.

**The USB device is not recognized.**

- Turn off the system and reconnect the USB device, then turn on the system.
- Check the information on the website about compatible USB devices (page 40).
- The USB device is not working properly. Refer to the operating instructions of the USB device on how to deal with this problem.

**Playback does not start.**

- Turn off the system and reconnect the USB device, then turn on the system.
- Check the information on the website about compatible USB devices (page 40).

**Playback does not start from the first file.**

- Set the play mode to Normal Play (page 17).

**Audio file cannot be played back.**

- USB devices formatted with file systems other than FAT16 or FAT32 are unsupported.\*
- A WMA audio file that is created in the WMA DRM, WMA Lossless, or WMA PRO format cannot be played back.
- An AAC audio file that is created in the AAC DRM or AAC Lossless format cannot be played back.
- AAC audio files encoded at 96 kHz cannot be played back.
- If multiple partitions exist on a USB device that is being used, files may not be played back.
- The system can play back to a depth of 8 folders only.
- Files that are encrypted or protected by passwords cannot be played back.
- Files with DRM (Digital Rights Management) copyright protection cannot be played back by this system.
- The MP3 PRO audio file can be played back as MP3 audio file.

\* This system supports FAT16 and FAT32, but some USB devices may not support all of these FAT. For details, refer to the operating instructions of each USB device or contact the manufacturer.

## Tuner

---

**There is severe hum or noise, or stations cannot be received. ("TUNED" or "STEREO" flashes on the display.)**

- Connect the antenna properly.
- Change antenna location and its orientation to obtain good reception.
- Consult your nearest Sony dealer if the supplied AM antenna has come off from the plastic stand.
- Turn off nearby electrical equipment.

## BLUETOOTH device

---

**Pairing cannot be performed.**

- Move the BLUETOOTH device closer to the system.
- Pairing may not be possible if other BLUETOOTH devices are present around the system. In this case, turn off the other BLUETOOTH devices.
- Make sure to enter the correct passkey when selecting the model number (this system) on the BLUETOOTH device.

**Connection is not possible.**

- The BLUETOOTH device you attempted to connect does not support the A2DP profile, and cannot be connected with the system.
- Enable the BLUETOOTH function of the BLUETOOTH device.
- Establish a connection from the BLUETOOTH device.
- The pairing registration information has been erased. Perform the pairing operation again.

- Erase the pairing registration information of the BLUETOOTH device (page 28) and perform the pairing operation again (page 25).

**The sound skips or fluctuates, or the connection is lost.**

- The system and the BLUETOOTH device are too far apart.
- If there are obstacles between the system and your BLUETOOTH device, remove or avoid the obstacles.
- If there is equipment that generates electromagnetic radiation, such as a wireless LAN, other BLUETOOTH device, or a microwave oven nearby, move them away.

**The sound of your BLUETOOTH device cannot be heard on this system.**

- Increase the volume on your BLUETOOTH device first, then adjust the volume using VOLUME +/-.

**There is severe hum, noise or distorted sound.**

- If there are obstacles between the system and your BLUETOOTH device, remove or avoid the obstacles.
- If there is equipment that generates electromagnetic radiation, such as a wireless LAN, other BLUETOOTH device, or a microwave oven nearby, move them away.
- Turn down the volume of the connected BLUETOOTH device.

## Party Chain

---

### Party Chain function cannot be activated.

- Check the connections (page 32).
- Make sure the audio cords are connected correctly.
- Adjust the volume.

### There is no sound when you select the audio in function.

- Adjust the volume on the connected equipment.
- Try turning off the system, then turning it back on again.

### "PARTY CHAIN" is flashing on the display.

- The audio in function is selected in the Party Chain function. Press FUNCTION repeatedly to select other function.
- Try turning off the system, then turning it back on again.

### To reset the system

If the system still does not operate properly, reset the system to factory default settings.

Use the buttons on the unit to perform this operation.

- 1 Unplug the AC power cord, and then plug it back in.
- 2 Press I/⏻ to turn on the system.
- 3 Hold down ■ and BASS BAZUCA at the same time for about 3 seconds.

"RESET" appears on the display.

All user-configured settings, such as preset radio stations, timer, and the clock are reset to factory default setting.

---

## Messages

One of the following messages may appear or flash on the display during operation.

### CANNOT PLAY

A disc that cannot be played back was inserted.

### DEVICE ERROR

The USB device could not be recognized or an unknown device is connected.

### DEVICE FULL

The memory of the USB device is full.

### FATAL ERROR

The USB device was removed during transfer or erase operation, and may have been damaged.

### FLDR FULL

You cannot transfer onto the USB device because the number of folder has reached its maximum.

### NO DEVICE

No USB device is connected.

### NO DISC

There is no disc in the player.

### NO MEMORY

The memory selected for playback or transfer has no memory media inserted in the USB device.

### NO STEP

All of the programmed steps have been erased.

### NO TRACK

No playable file is loaded in the system.

### **NOT IN USE**

You tried to perform a specific operation under conditions where that operation is prohibited.

### **NOT SUPPORTED**

An unsupported USB device is connected, or the USB device is connected through a USB hub.

### **PROTECTED**

The USB device is write-protected.

### **PUSH STOP**

You tried to perform an operation that can be performed only when the playback is stopped.

### **READING**

The system is reading information of the disc or USB device. Some operations are not available.

### **REC ERROR**

The transfer did not start, stopped partway, or otherwise could not be performed.

### **STEP FULL**

You tried to program more than 25 steps.

### **TIME NG**

The on time and off time of Play Timer or Recording Timer is the same.

### **TRACK FULL**

You cannot transfer onto the USB device because the number of file has reached its maximum.

---

## **Precautions**

### **When carrying this system**

To avoid damaging the disc mechanism, perform the following procedure before carrying this system.

Use the buttons on the unit to perform this operation.

- 1 Press I/⏻ to turn on the system.**
- 2 Press CD.**
- 3 Remove the disc.**  
Press ▲ to open and close the disc tray.  
Wait until "NO DISC" appears on the display.
- 4 Unplug the AC power cord.**

### **Notes on discs**

- Before playing, wipe the disc with a cleaning cloth from the center outward to the edge.
- Do not clean discs with solvents, such as benzine, thinner, or commercially available cleaners or anti-static spray intended for vinyl LPs.
- Do not expose discs to direct sunlight or heat sources such as hot air ducts, nor leave them in a car parked in direct sunlight.

### **On safety**

- Completely disconnect the AC power cord (mains lead) from the wall outlet (mains) if it is not going to be used for an extended period of time. When unplugging the unit, always grip the plug. Never pull the cord itself.
- Should any solid object or liquid get into the system, unplug the system, and have it checked by qualified personnel before operating it again.

- (USA model only)  
One blade of the plug is wider than other for the purpose of safety and will fit to the wall outlet only one way. If you are unable to insert the plug fully into the outlet, contact your dealer.
- AC power cord must be changed only at the qualified service shop.

### On placement

- Do not place the system in an inclined position or in locations that are extremely hot, cold, dusty, dirty, or humid or lacking adequate ventilation, or subject to vibration, direct sunlight or a bright light.
- Be careful when placing the system on surfaces that have been specially treated (for example, wax, oil, polish) as staining or discoloration of the surface may result.
- If the system is brought directly from a cold to a warm location or is placed in a very damp room, moisture may condense on the lens inside the unit, and cause the system to malfunction. In this situation, remove the disc, and leave the system turned on for about an hour until the moisture evaporates.

### On heat buildup

- Heat buildup on the unit during operation is normal and is not a cause for alarm.
- Do not touch the cabinet if it has been used continuously at a high volume because the cabinet may have become hot.
- Do not obstruct the ventilation holes.

### On the speaker system

The built-in speaker system is not magnetically shielded, and the picture on nearby TV sets may become magnetically distorted. In this situation, turn off the TV, wait 15 to 30 minutes, and turn it back on. If there is no improvement, move the system far away from the TV.

### Cleaning the cabinet

Clean this system with a soft cloth slightly moistened with a mild detergent solution. Do not use any type of abrasive pad, scouring powder, or solvent, such as thinner, benzene, or alcohol.

### On BLUETOOTH Communication

- BLUETOOTH devices should be used within approximately 10 meters (33 feet) (unobstructed distance) of each other. The effective communication range may become shorter under the following conditions:
  - When a person, metal object, wall or other obstruction is between the devices with a BLUETOOTH connection
  - Locations where a wireless LAN is installed
  - Around microwave ovens that are in use
  - Locations where other electromagnetic waves occur
- BLUETOOTH devices and wireless LAN (IEEE 802.11b/g) use the same frequency band (2.4 GHz). When using your BLUETOOTH device near a device with wireless LAN capability, electromagnetic interference may occur. This could result in lower data transfer rates, noise, or inability to connect. If this happens, try the following remedies:
  - Try connecting this system and BLUETOOTH device when you are at least 10 meters (33 feet) away from the wireless LAN equipment.
  - Turn off the power to the wireless LAN equipment when using your BLUETOOTH device within 10 meters (33 feet).
- The radio waves broadcast by this system may interfere with the operation of some medical devices. Since this interference may result in malfunction, always turn off the power on this system and BLUETOOTH device in the following locations:
  - In hospitals, on trains, in airplanes, at gas stations, and any place where flammable gases may be present
  - Near automatic doors or fire alarms

- This system supports security functions that comply with the BLUETOOTH specification as a means of ensuring security during communication using BLUETOOTH technology. However, this security may be insufficient depending on the setting contents and other factors, so always be careful when performing communication using BLUETOOTH technology.
- Sony cannot be held liable in any way for damages or other loss resulting from information leaks during communication using BLUETOOTH technology.
- BLUETOOTH communication is not necessarily guaranteed with all BLUETOOTH devices that have the same profile as this system.
- BLUETOOTH devices connected with this system must comply with the BLUETOOTH specification prescribed by the Bluetooth SIG, Inc., and must be certified to comply. However, even when a device complies with the BLUETOOTH specification, there may be cases where the characteristics or specifications of the BLUETOOTH device make it impossible to connect, or may result in different control methods, display or operation.
- Noise may occur or the audio may cut off depending on the BLUETOOTH device connected with this system, the communications environment, or surrounding conditions.

---

## Specifications

### AUDIO POWER SPECIFICATIONS

POWER OUTPUT AND TOTAL HARMONIC DISTORTION: (USA model only)

Left/Right Channel:  
With 5 ohm loads, both channels driven, from 800 – 20,000 Hz; rated 150 watts per channel minimum RMS power, with no more than 0.7% total harmonic distortion from 250 milliwatts to rated output.

### Amplifier section

Power output (rated):

Left/Right Channel: 320 W + 320 W (at 5 ohms, 1 kHz, 1% THD)

Power output (reference):

Brazilian model:

Left/Right Channel: 400 W + 400 W (per channel at 5 ohms, 1 kHz)

Subwoofer: 400 W (at 5 ohms, 1 Hz)

Other models:

Left/Right Channel: 480 W + 480 W (per channel at 5 ohms, 1 kHz)

Subwoofer: 480 W (at 5 ohms, 1 Hz)

### Speaker section

Speaker system: Tweeter + Mid range speaker + woofer

Tweeter L/R: 40 mm (1 5/8 in) cone type

Mid L/R: 100 mm (3 7/8 in) cone type

Woofer: 250 mm (9 7/8 in) cone type



## Inputs

AUDIO IN/PARTY CHAIN IN L/R:

Voltage 2 V, impedance  
47 kilohms

⚡ A (USB), ⚡ B (USB) port:

Type A, maximum current:  
500 mA

## Outputs

AUDIO OUT/PARTY CHAIN OUT L/R:

Voltage 2 V, impedance 47  
kilohms

## iPod/iPhone section

### Made for

- iPhone 5s
- iPhone 5c
- iPhone 5
- iPhone 4s
- iPhone 4
- iPhone 3GS
- iPod touch (5th generation)
- iPod touch (4th generation)

## Disc player section

System:

Compact disc and digital audio  
system

Laser Diode Properties

Emission Duration: Continuous

Laser Output\*: Less than 44.6  $\mu$ W

\* This output is the value  
measurement at a distance of  
200 mm from the objective lens  
surface on the Optical Pick-up  
Block with 7 mm aperture.

Frequency response:

20 Hz – 20 kHz

Signal-to-noise ratio:

More than 90 dB

Dynamic range:

More than 88 dB

## Tuner section

FM stereo, FM/AM superheterodyne  
tuner

Antenna:

- FM lead antenna
- AM loop antenna

## FM tuner section

Tuning range:

USA and Brazilian models:  
87.5 MHz - 108.0 MHz (100 kHz  
step)

Other models:

87.5 MHz - 108.0 MHz (50 kHz  
step)

## AM tuner section

Tuning range:

531 kHz – 1,710 kHz (9 kHz step)

530 kHz – 1,710 kHz (10 kHz step)

## BLUETOOTH section

Communication system:

BLUETOOTH Standard version 3.0

Output:

BLUETOOTH Standard Power  
Class 2

Maximum communication range:

Line of sight approx. 10 m<sup>1)</sup>

Frequency band:

2.4 GHz band (2.4000 GHz –  
2.4835 GHz)

Modulation method:

FHSS (Freq Hopping Spread  
Spectrum)

Compatible BLUETOOTH profiles<sup>2)</sup>:

A2DP (Advanced Audio  
Distribution Profile)  
AVRCP 1.3 (Audio Video Remote  
Control Profile)  
SPP (Serial Port Profile)

Supported codecs:

SBC (Sub Band Codec)  
AAC (Advanced Audio Coding)

<sup>1)</sup> The actual range will vary depending on factors such as obstacles between devices, magnetic fields around a microwave oven, static electricity, reception sensitivity, antenna's performance, operating system, software application, etc.

<sup>2)</sup> BLUETOOTH standard profiles indicate the purpose of BLUETOOTH communication between devices.

## Supported audio formats

Supported bit rate:

MPEG1 Layer-3:  
32 kbps – 320 kbps, VBR  
WMA (USB devices only):  
48 kbps – 192 kbps, VBR  
AAC (USB devices only):  
48 kbps – 320 kbps, VBR

Sampling frequencies:

MPEG1 Layer-3:  
32 kHz/44.1 kHz/48 kHz  
WMA (USB devices only):  
44.1 kHz  
AAC (USB devices only):  
44.1 kHz

## General

### Power requirements:

USA model:

AC 120 V, 60 Hz

Argentine model:

AC 220 V – 240 V, 50/60 Hz

Mexican and Brazilian models:

AC 120 V – 240 V, 60 Hz

Other models:

AC 120 V – 240 V, 50/60 Hz

### Power consumption:

240 W (0.5 W at the Power Saving mode)

### Dimensions (w/h/d) (Approx.):

339 mm × 908 mm × 325 mm

(13 <sup>3</sup>/<sub>8</sub> in × 35 <sup>3</sup>/<sub>4</sub> in × 12 <sup>3</sup>/<sub>4</sub> in)

### Mass (Approx.):

18 kg (39 lb 10 <sup>7</sup>/<sub>8</sub> oz)

### Supplied accessories:

Remote control (1)

R6 (Size AA) batteries (2)

AC power cord (1)

FM lead/AM loop antenna (1)

Design and specifications are subject to change without notice.

<http://www.sony.net/>



©2014 Sony Corporation Printed in China

\* 4 5 3 1 3 5 0 1 1 \* (1)