

Fast Using Manual for WIFI BELL
APP



Fast Using Manual for WIFI BELL App

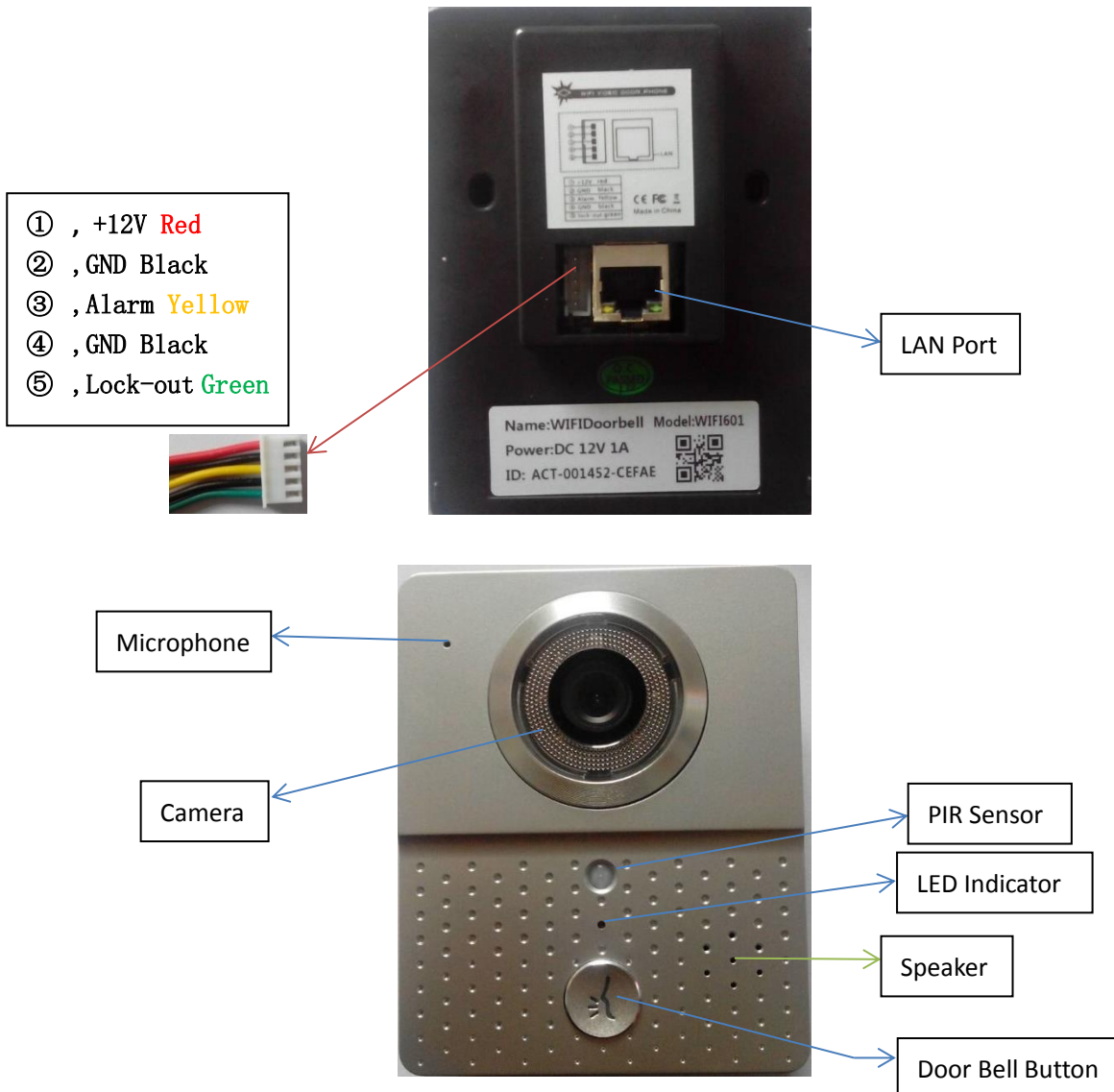
Introduction to WIFI Visual Intercom Doorbell:

WIFI Visual Intercom Doorbell works with WIFI. It connects home network with WIFI or LAN cable. When visitors press the doorbell, your phone would receive a video phone from it. Then you can talk with the guests and see what's happening outside. Even you can open the Door by the app remotely no matter by local network or 3G/4G.

1, Go to Google Play or App Store to search the App with "WIFI Bell".



2, Install the Door Bell device.



2, Register a User account and Login.

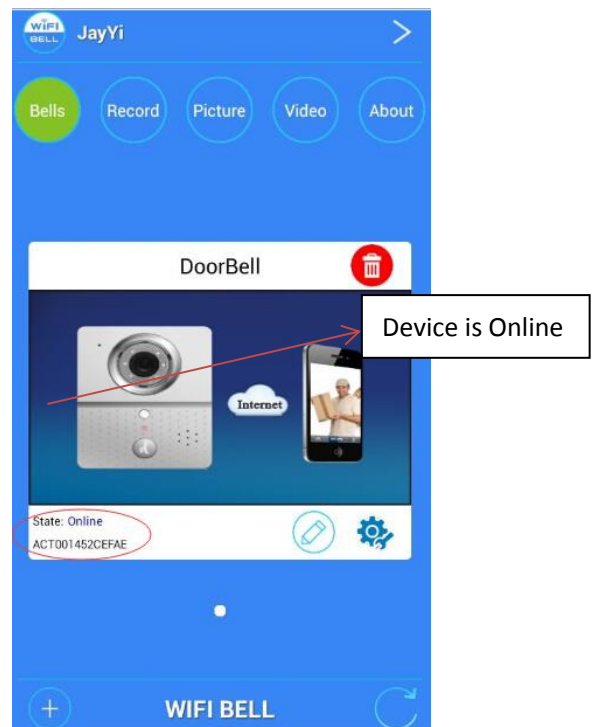
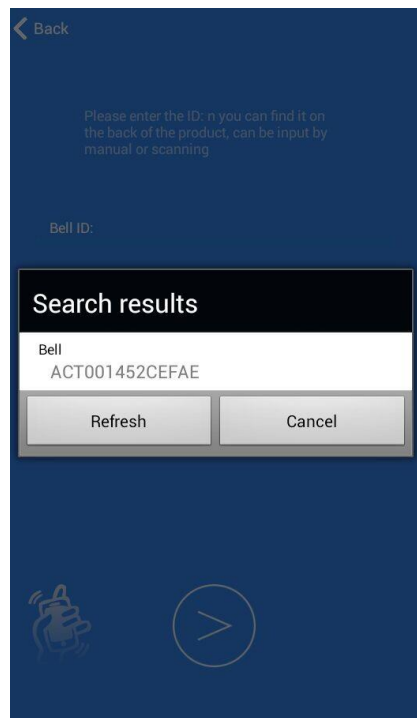
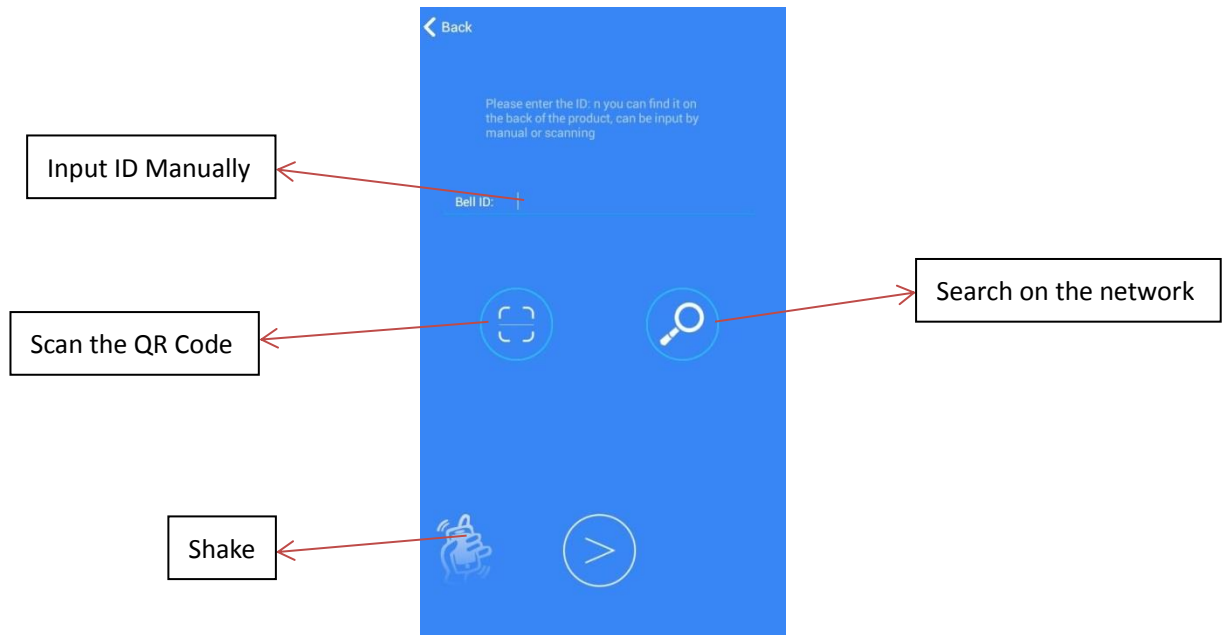


3, Add device.

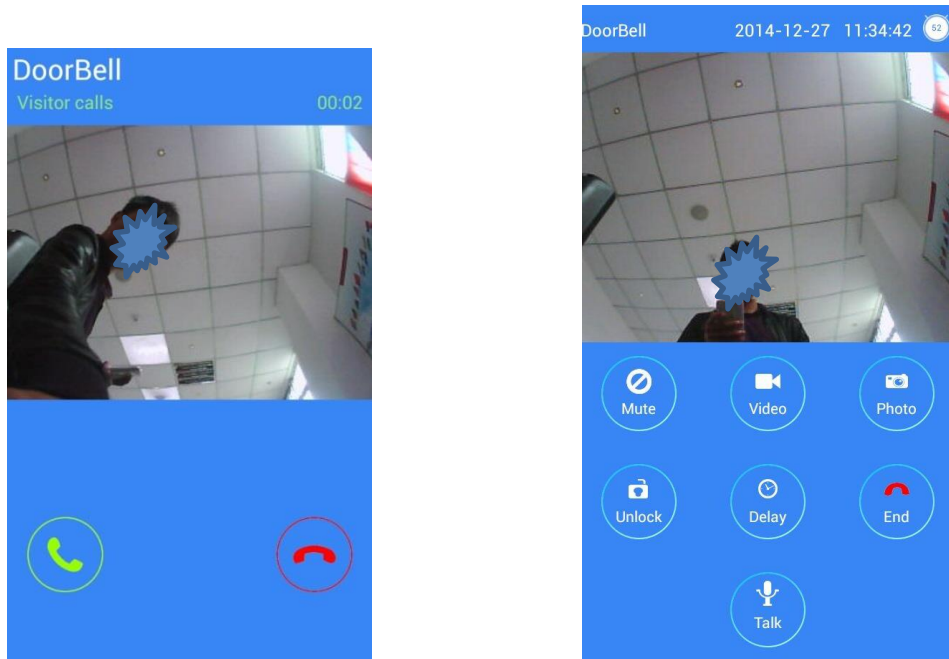


Press here to add Doorbell device

4, Input the ID of the Door Bell by multi ways.

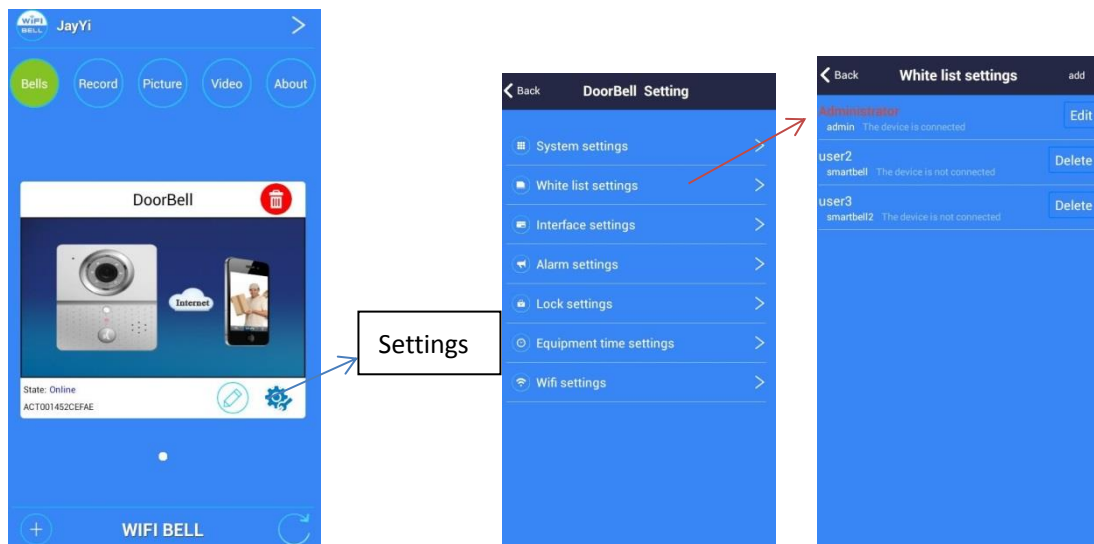


5 Now if any guest pressing the Door Bell button. The device would make a video phone call to you.



6, The Door Bell device totally can support 8 users at the same time.

Choose one user as an Administrator, then go to White list settings you can add 7 more users:



7, Alarm Settings:

Once there are people in front of the Device but without calling in 5 seconds (For example). Alarm triggered.

