

Beyond a mirror!

Yirro+⁺



Yirro-plus[®]
self cleaning dental mirror system

expert user quotes



I am very pleased with my Yirro-plus mirror. It is a simple idea and makes working on upper teeth much faster, I can now see! The quality of the mirror surface is such that the image is brighter than with my normal front surface reflecting mirrors, and I can turn the lighting down on my loupes, thus making the battery last longer. Thank you! Robin.

Dr. Robin Horton, Wayside Dental Practise, Harpenden, UK



"This dental mirror is especially useful for wet preparations of any kind. In particular when locating root canals in endodontics... its extreme reflection is practical for working deep in the root canal and on severely discolored teeth."

Mr. Dr. Tomas Lang, microdentist in Essen, Germany



"This dental mirror system is a pleasure to use due to its extremely high reflection"

Mark Cronshaw, laser dentist at Amery House Dental Praxis, Cowes, UK



"We have implemented the Yirro-plus System with success on rootcanalcleaning and on our microchirurgic pocket-treatments [glass pearl procedure]"

Mr. Prof. Dr. Peter Kotschy, parodontologist in Wien, Austria

Yirro-plus® self cleaning dental mirror system



"The smaller type of this dental mirror offers me a great sight at the back teeth; its reflection is extremely high"
Patrick Vadász, experienced microdentist in Nijmegen, NL

Yirro-plus® self cleaning dental mirror system



- * always a clear image
- * extremely reflective
- * more efficiency
- * more comfort
- * no maintenance

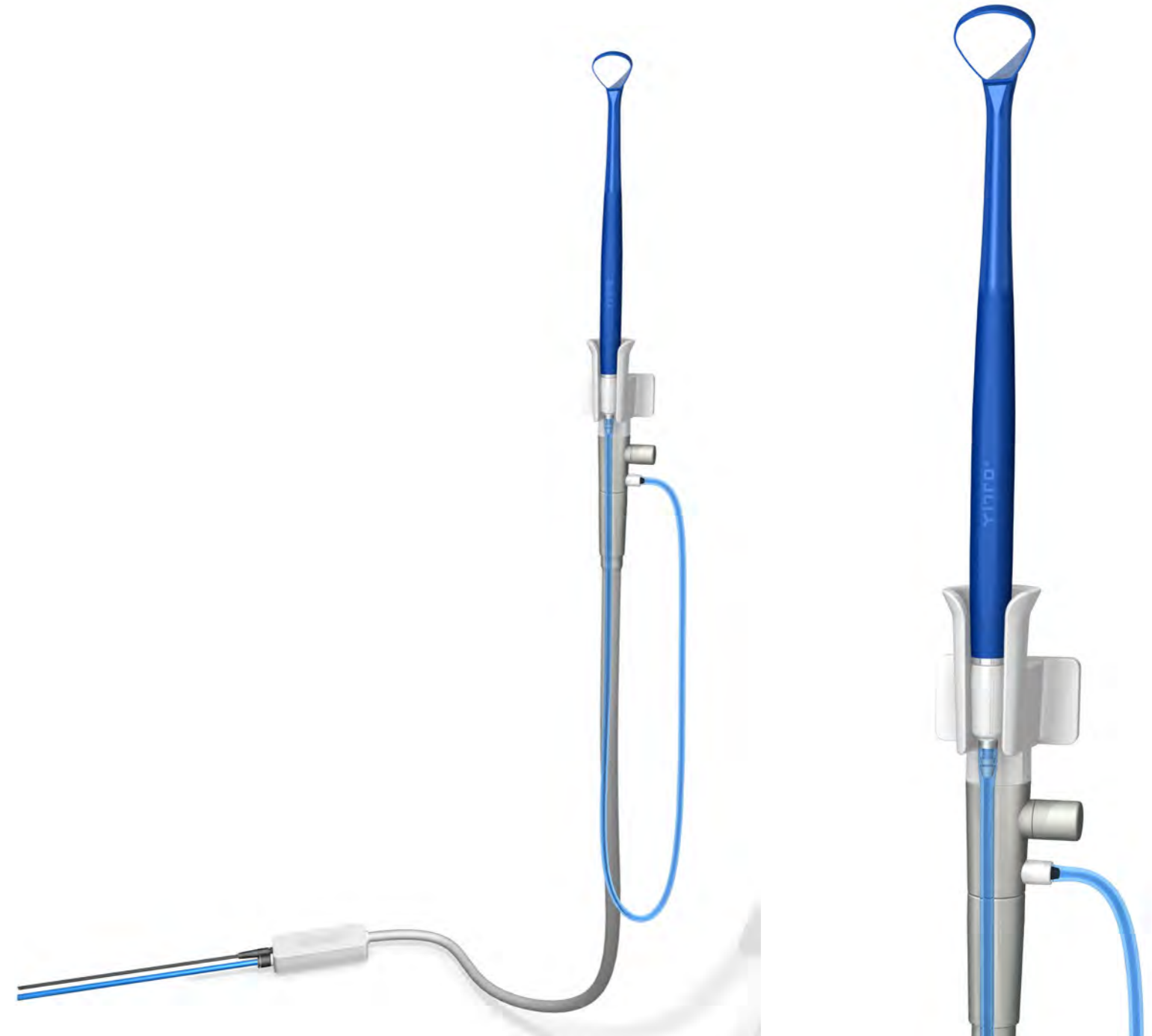
Yirro-plus® PREMIUM system

automatic magnet sensor



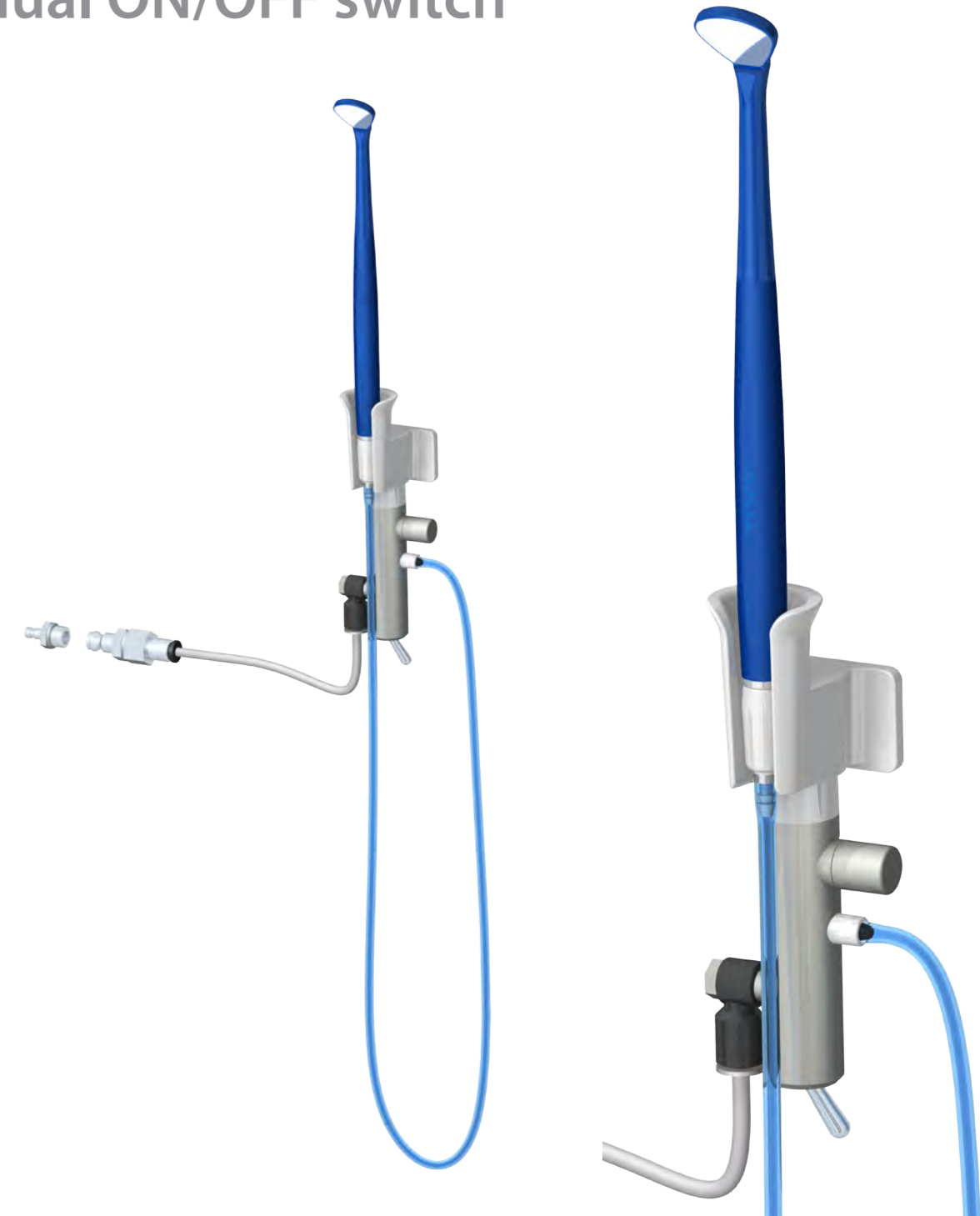
complete startset, automatically switched system including:

8 handles, 12 mirror heads, docking station, air regulation, connection supply and user manual - to be installed independantly to air and 24V



Yirro-plus® COMFORT system

manual ON/OFF switch



complete startset, manually switched system including:

8 handles, 12 mirror heads, docking station, air regulation, connection supply and user manual - to be installed independantly to air or external airpoint

Yirro-plus® mirror head no. 0



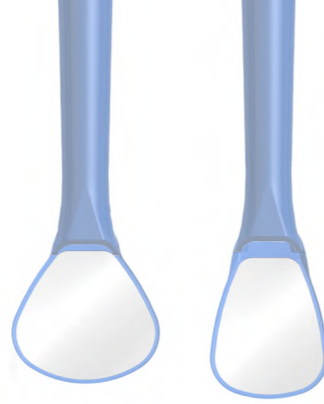
mirror head 13.6 mm scratch resistant reusable front surface mirror
housing of durable medical plastic, thermoisinfectable and autoclavable

Yirro-plus® mirror head no. 2



mirror head 18.4 mm scratch resistant reusable front surface mirror
housing of durable medical plastic, thermoisinfectable and autoclavable

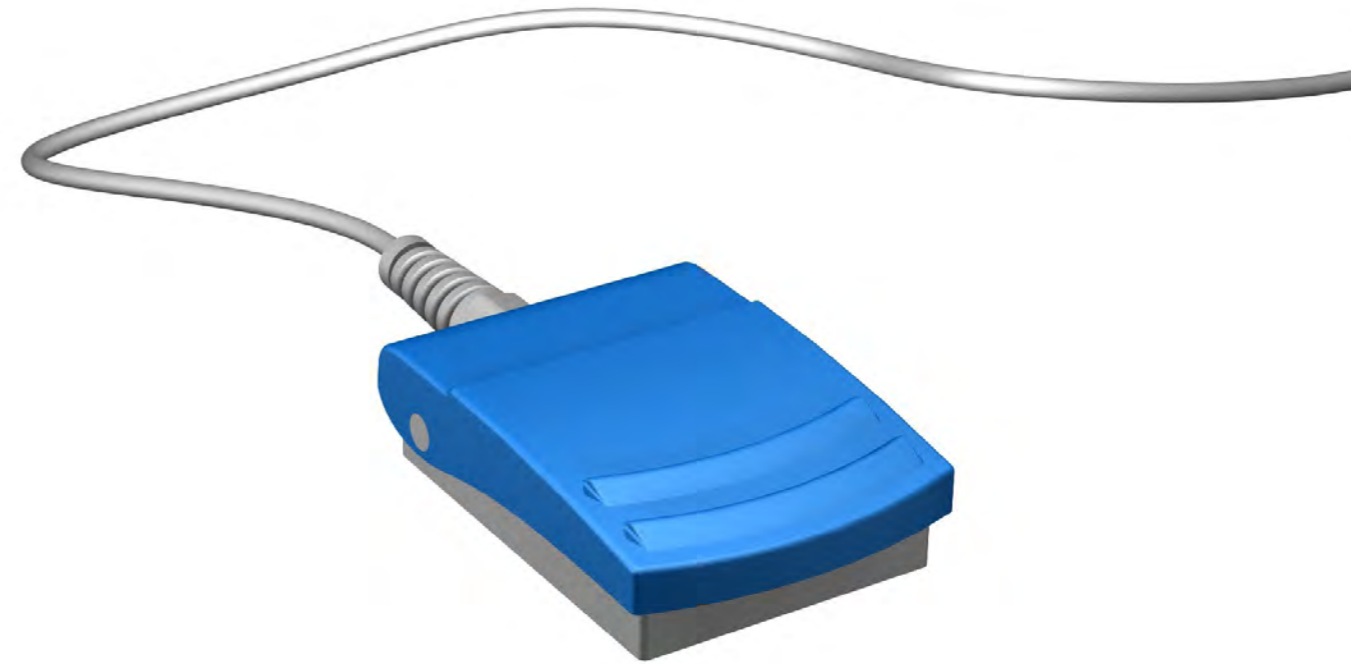
Yirro-plus® handle



handle

durable medical plastic / surgical steel - thermoisinfectable / autoclavable
to be used in combination with Yirro-plus® mirror head no. 0 or no. 2
4-pack box

Yirro-plus® foot switch



foot switch

for ON/OFF switching of air flow in between treatment
[back wards] compatible with Yirro-plus® PREMIUM system

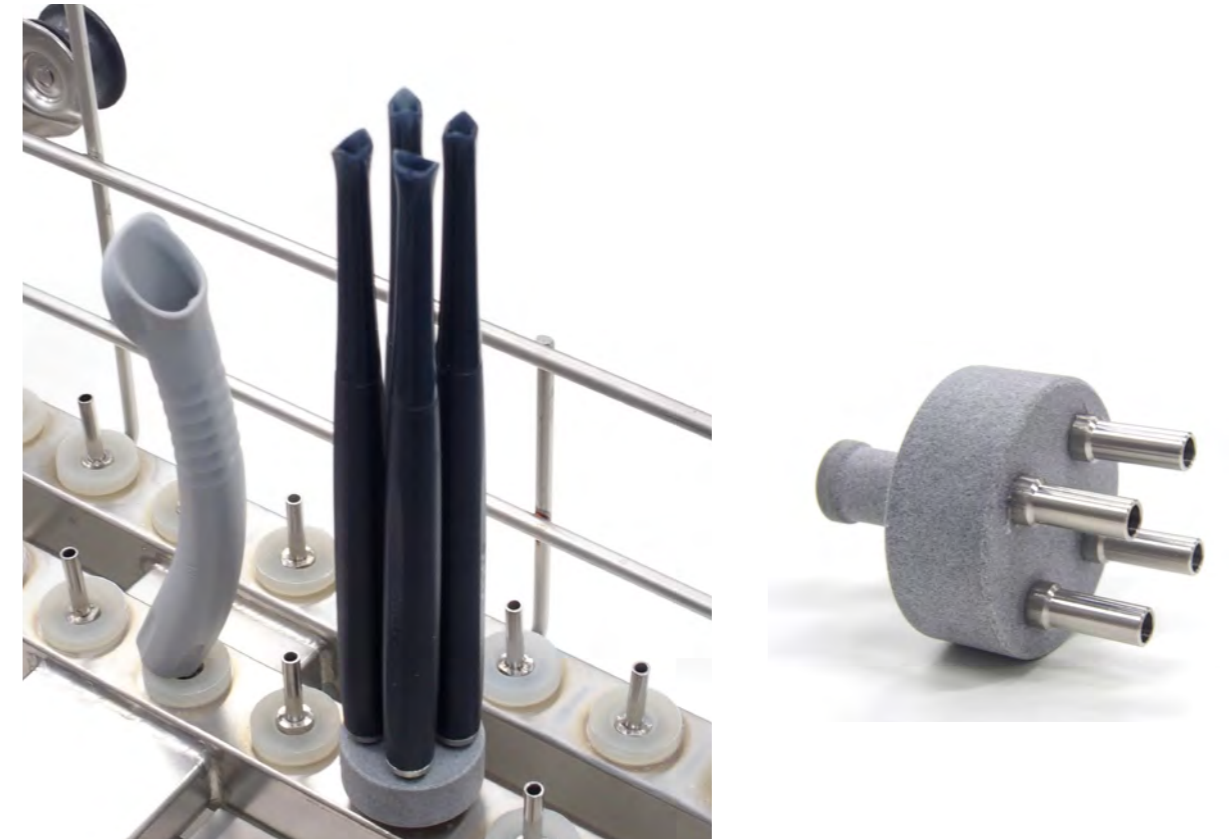
Yirro-plus® cleaning box '8'



cleaning box '8'

for protected cleaning of 8 Yirro-plus® mirror heads
stainless steel + silicone; thermodisinfected / autoclavable
size 70 x 90 x 25 mm

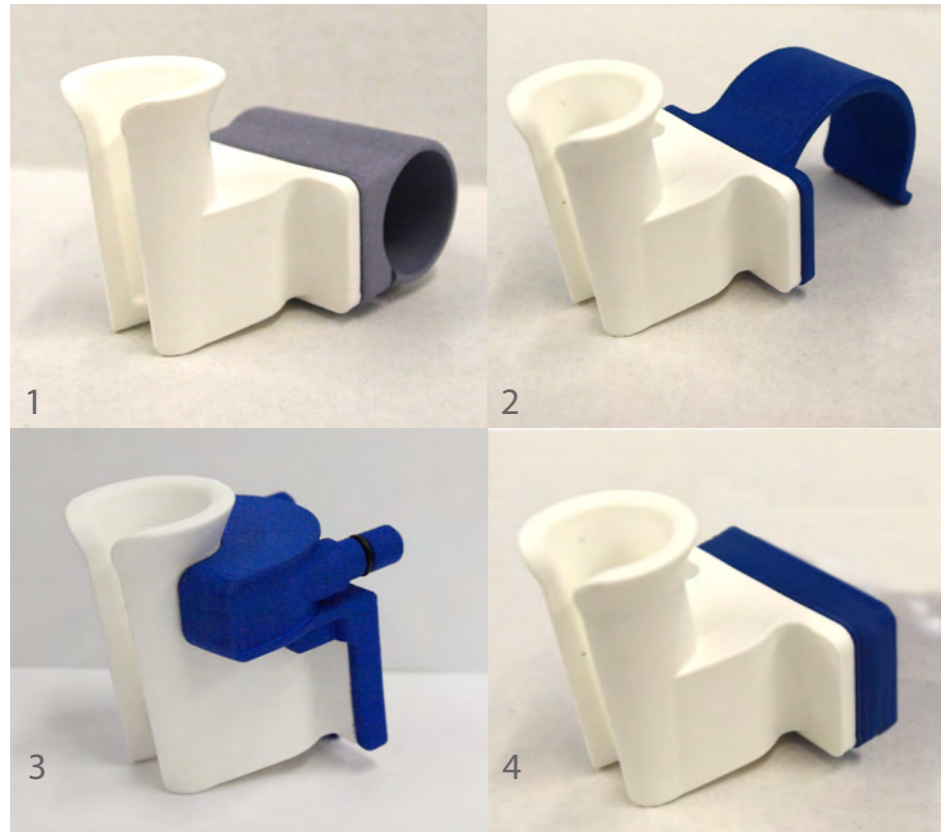
Yirro-plus® sprinkler adaptor '4'



sprinkler adaptor '4'

A 4-position sprinkler adaptor offers more economic cleaning
in thermo-disinfector
durable plastic + stainless steel - size $\varnothing 30 \times 12$ mm

Yirro-plus® Clip-dockings



adapter clips

- 1. \varnothing 25 mm tube clip docking
- 2. A-dec clip docking
- 3. HEKA clip1 docking
- 4. Extension 16 mm [SIRONA Teneo]

Installation examples



A-DEC
adapter docking

The regular adapter docking for A-dec integration is included in the start set

Installation examples



A-dec adapter docking

*The adapter docking for A-dec integration is included in the start set.
also available: special A-DEC clip adapter for LEFT & RIGHT hand use.
This clip adapter is not included in the start set.*

Installation examples



Anthos universal docking / adapter docking

The universal docking and the adapter docking are both included in start set

**universal installation
sideways or in spare hole**

Installation examples



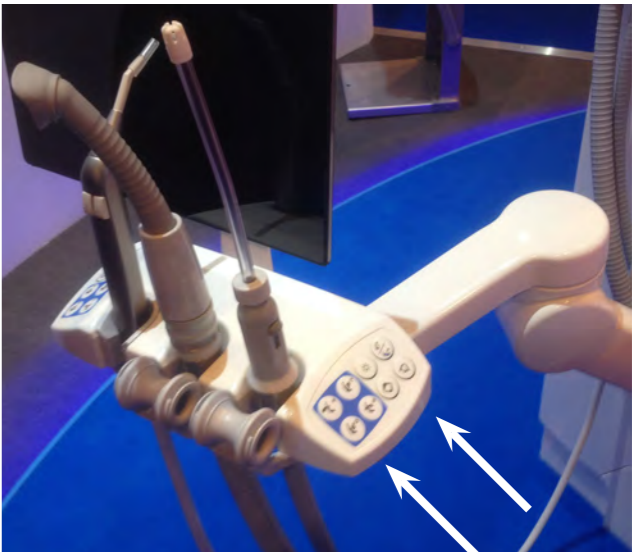
XO [flex]
universal docking

The universal docking is included in the start set.

Installation examples



*'Old style' PLANMECA Compact unit
[use of standard adapter docking + ring]*



*An adapter for integration on the new style
PLANMECA Compact unit is in development]*

PLANMECA

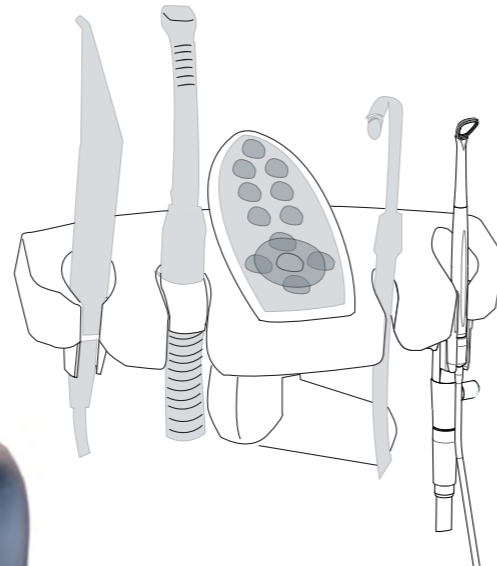
adapter ring + docking adapter [old style Compact]
special adapter for new style Compact [in development]

The adapter ring and adapter docking for Planmeca integration are included in the start set.
The adapter ring fits into the older Planmeca types. We are currently working on new adapters.

Installation examples



universal installation
sideways or in spare hole



KaVo

Adapter Docking or universal Docking

If there is a spare slot, the adapter docking fits into the KaVo delivery unit.

Installation examples

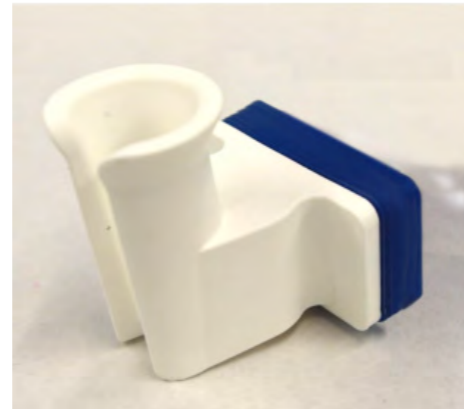


Sirona

universal docking

The universal docking is included in the start set.

Installation examples



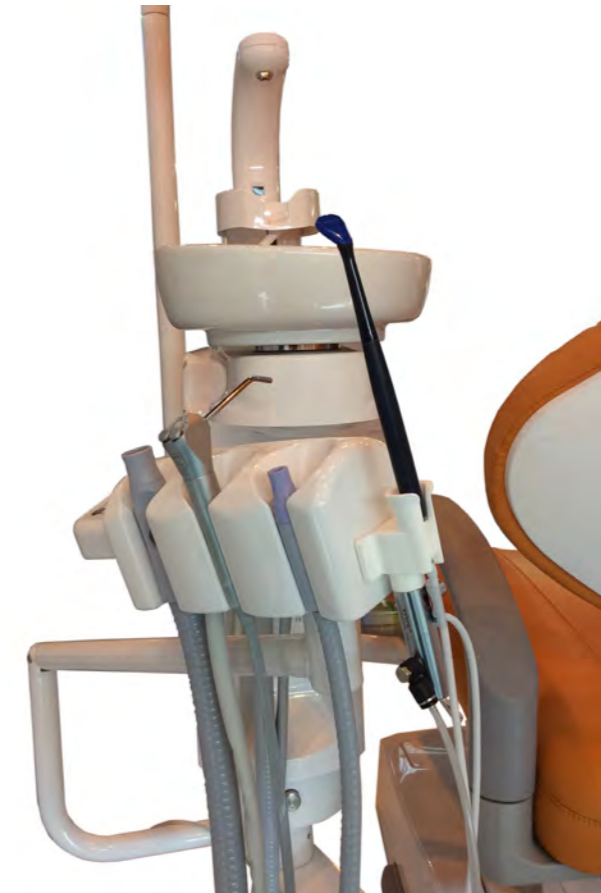
special Extension docking 16 mm

pay attention:
the movements of the assistance may
not be blocked by the docking

Sirona Teneo

*PAY ATTENTION! The TENEO assistance unit has a large brim.
It is necessary to use the special Docking extension 16 mm,
which is separately available.*

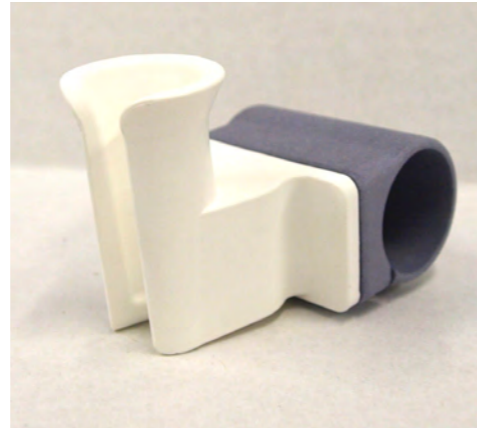
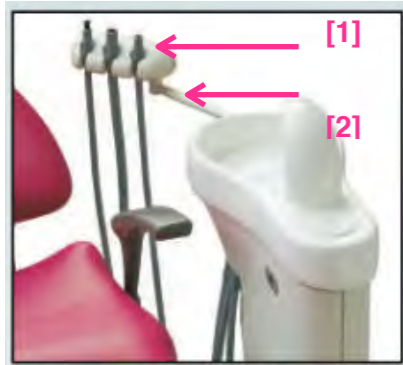
Installation examples



Belmont universal docking

The universal docking is included in the start set.

Installation examples



special Clip Docking \varnothing 25 mm

*pay attention:
The tube size should preferably be \varnothing 25 mm [1 inch].
If the tube is smaller it needs to be thickened.
This item is separately available*

Tridac [DSM spittoons]

Use Clip Docking \varnothing 25 mm

*Pay attention:
The assistance unit is too rounded for placing the universal docking adapter. [1]
Best solution is to place the special Clip Docking \varnothing 25 mm on the tube. [2]*

Installation examples



Sirona C8 universal docking

*pay attention:
the moveability of the assistance may change when installing at the side of the assistance unit as indicated here.*

Installation examples

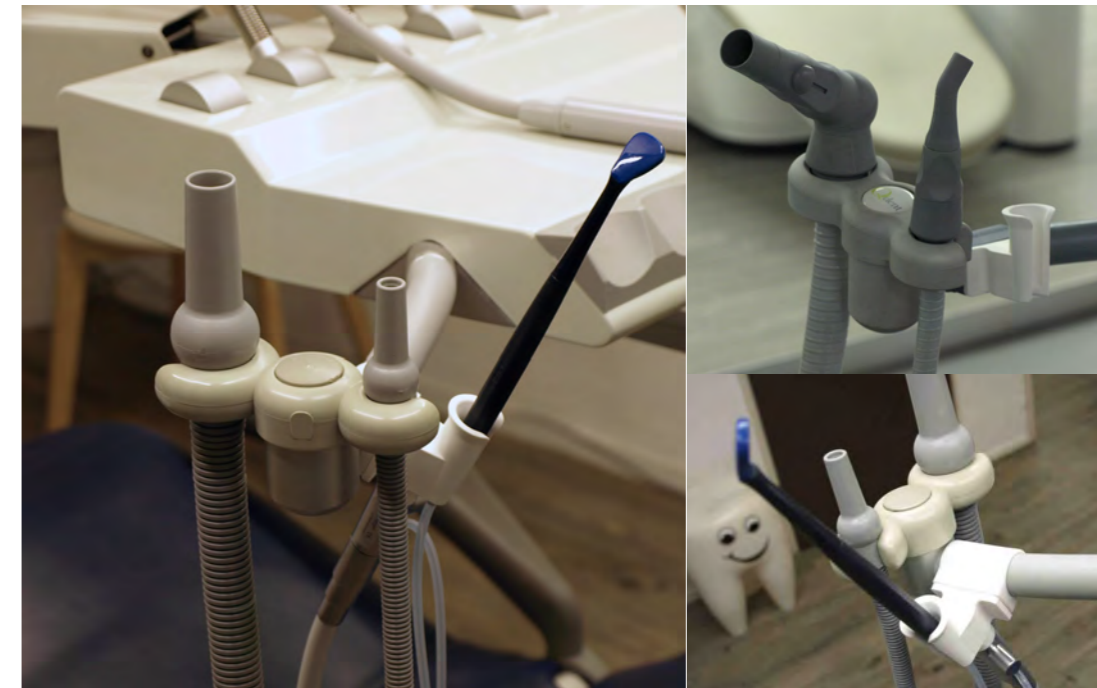


Ultradent

universal docking, with use of the screws

The universal docking is included in the start set

Installation examples



Epilux

ø25 mm Clip Docking

The Clip Docking for Epilux integration is separately available.

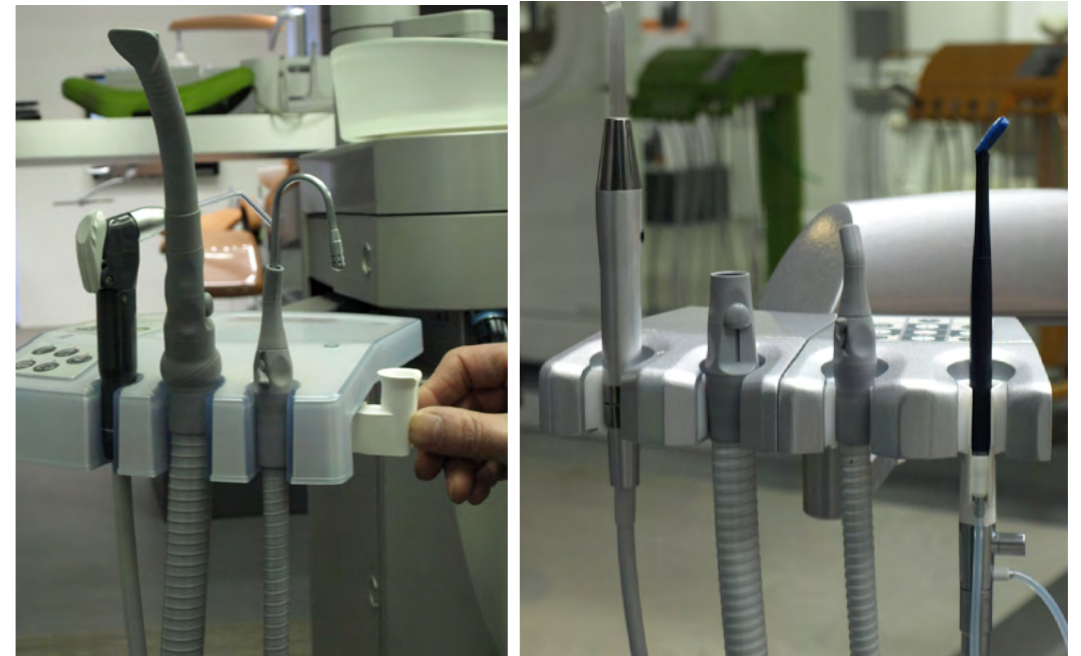
Installation examples



Q-dent
docking adapter

The docking adapter is suitable for Dürr block integration is included in the start set

Installation examples



Universal docking

Docking adapter

Both universal docking and docking adapter are included in start set.

Installation examples

HEKA1 CLIP



HEKA
special adapter docking
2 versions *available*



HEKA2 CLIP



[available soon]

Installation examples

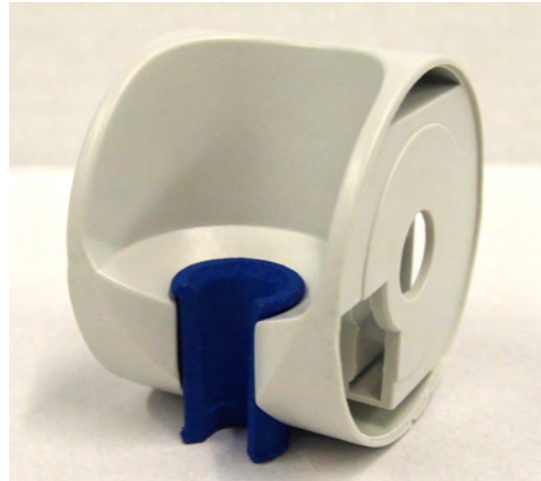


Topcart
universal docking
extension docking *[better manipulation of toggle]*

universal docking included in start set

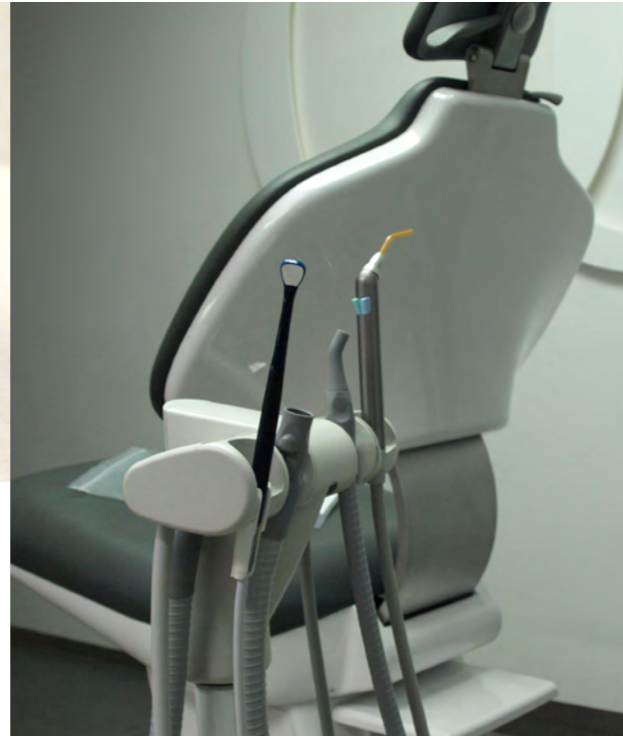
Dürrblock
wall assist
universal docking

FLEX coupler Assist o.e.m.



FLEX Assist adapter

not included start set



Q-dent unit / Dürr Block

FLEX coupler Assist o.e.m.

Durr-adapter for o.e.m. integration by manufacturer

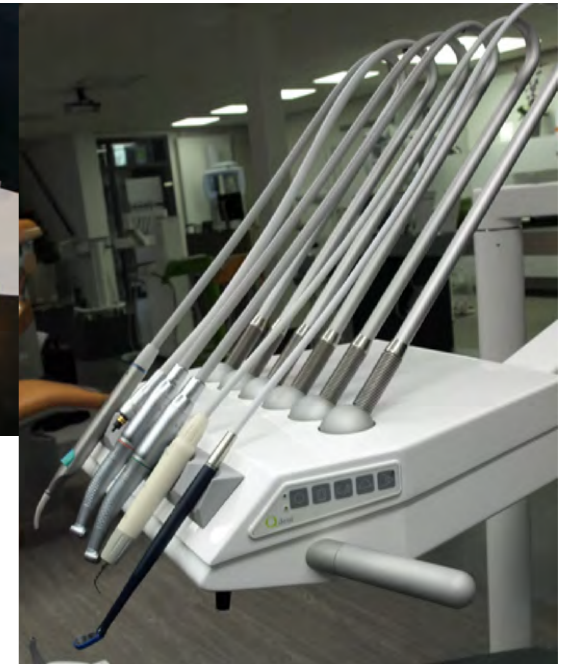
only available through the unit manufacturer
[contact us for information]

FLEX coupler Sweep o.e.m.



Finndent unit

o.e.m. solution
NOT included in start set



Q-dent unit

FLEX coupler Sweep o.e.m.

for o.e.m. integration by manufacturer
only available through the unit manufacturer
[contact us for information]

Quick connection set



Quick connection set
for quick connection on NW 2.7 or NW 5.0
external Air point

INCLUDED in PREMIUM set - INCLUDED in COMFORT set
[Female connector available - on request - contact us]

CONTACT INFORMATION

DHM-dental B.V.
Simon Stevinweg 48
6827 BT ARNHEM
the Netherlands

+31 26 7370367
www.dhm-dental.com
info@dhm-dental.com
sales@dhm-dental.com

KVK 57155879
VAT: NL852461161B01
IBAN: NL50 INGB 0008 2831 14
BIC/Swift code: INGBNL2A

Quality System

Our company develops and produces according the EN/ISO 13485 Rules and the implemented Quality System stands for constant quality. The Yirro-plus® system is a CE-marked system

Patented system

The Yirro-plus® system is a patented system and a registered trademark, exclusively produced by DHM-dental.