

NEXT BASE

iN-CAR CAM™

Instruction Manual

inc. Driving Recorder Player Software Installation Guide



302G | **Deluxe**
High Definition Car DVR with GPS

TABLE OF CONTENTS

PRECAUTIONS	04
CAUTIONS ON USING THIS PRODUCT	04
PRODUCT SPECIFICATION	05
PACKAGE CONTENTS	06
PRODUCT FEATURES	06
CONTROLS	07
INSTALLATION	08
VIDEO MODE	10
PHOTO MODE	12
PLAYBACK MODE	
VIDEO PLAYBACK	13
PHOTO PLAYBACK	13
MENUS AND SETTINGS	
VIDEO MODE	14
PHOTO MODE	15
PLAYBACK MODE	15
SETUP MENU	16
PC CONNECTION	
MASS STORAGE	17
PC CAMERA	17
VIDEO & AUDIO OUTPUT	
HIGH DEFINITION OUTPUT	17
STANDARD DEFINITION OUTPUT	17
DRIVING RECORDER PLAYER	
SYSTEM MINIMUM REQUIREMENTS	18
INSTALLATION	19
CONTROLS	24
OPERATION	26
TROUBLING SHOOTING	27

PRECAUTIONS

Please read this manual carefully before operation and keep it for future reference. It will be helpful should you encounter any operational problem.

WARNING: Do not expose this product to rain, moisture or water under any circumstances, doing so may result in the risk of electric shock of fire.

CAUTION: To reduce the risk of electric shock, do not perform any servicing other than that contained in the instruction manual unless you are qualified to do so.

Have the unit serviced by a qualified service technician if;

The Unit has been exposed to rain or water.

The unit does not seem to operate normally.

The unit exhibits a marked change in performance.

LCD: A Liquid Crystal Display (LCD) screen is a multilayer complex component, containing 230,400 pixels. Pixels can however fail during normal product life. 1 pixel = 0.0004% failure rate, and one pixel failure per year of operation is considered normal and not a cause for concern.

WEEE: **Disposal of Waste Electrical and Electronic Equipment and/or Battery by users in private households in the European Union.**



This symbol on the product or on the packaging indicates that this can not be disposed of as household waste. You must dispose of your waste equipment and/or battery by handing it over to the applicable take-back scheme for the recycling of electronic equipment and/or batteries. For more information please contact your local household waste disposal office.

CAUTIONS ON USING THIS PRODUCT

1. Ensure that the windscreen is free of dirt or grease before placing mount upon it.
2. Do not obscure the view of the road ahead or impede the deployment of any airbags in the event of an accident.
3. When not in use, please disconnect the car adaptor from both the 12/24Vdc outlet in your vehicle and the device itself.
4. Only clean the device with a soft dry cloth, for tough dirt, apply some neutral detergent diluted in 5 to 6 parts water to a soft cloth.

Note that alcohol, thinner, benzene etc could cause damage to the paint or coatings.

5. Avoid making contact with the lens as damage may be caused.
6. If required clean the glass lens carefully using spectacle lens cleaning fluid on a soft cloth only.
7. The video recordings made by this iN-CAR CAM are intended for personal use only.
8. Publication of the recordings on Youtube, the internet or other methods are subject to the Data Protection Act and the requirements thereof must be adhered to.
If the iN-CAR CAM is to be used within a commercial environment, i.e. truck use, then the CCTV regulation applies also, in addition to the Data Protection Act regulations. This includes labelling to identify the use of CCTV is taking place, the omission of Audio recording and informing the relevant authorities of who controls the data.
9. Video playback upon the device which is visible to the driver is prohibited or restricted in some countries or States. Please adhere to these laws.
10. Whilst driving, do not adjust the controls of your device as this is a distraction to driving.







DO NOT ATTEMPT TO SERVICE THE UNIT BY YOURSELF!

PRODUCT SPECIFICATION

Model Number / Name	NBDVR302G / NEXTBASE iN-CAR CAM 302G DELUXE
Power Requirements	5V / 200mA
Power Supply	12-24Vdc Car Power Cable (supplied) Fuse Type: 20mm Glass Fast Blow 2A Output: 5Vdc
Sensor Resolution	1M Pixel (1,000,000 Pixel)
Lens Type	4G
Lens Angle	120°
Lens Aperture	F2.0
Recording Resolution (Max.)	1440 x 1080 @ 15fps
Recording Resolution (Default)	1280 x 720 @ 30fps
Recording Format	AVI
Screen Resolution	960 (W) X 240 (H) pixels x RGB
Screen Size / Ratio	2.7" / 16:9
Card Reader	Full Size SDHC, Class 6-10, <=32GB
SD Card (Recommended Type)	8-32GB Class 10 (30mb/s) branded (not supplied)
SD Card Recorded File Capacity (based on default settings)	8GB = 125mins of recording 16GB = 250mins of recording 32GB = 500mins of recording
Video Out	High Definition: Type C Socket (Video / Audio) Standard Definition: 3.5mm Jack (Video / Audio)
Internal Battery	Lithium-ion 3.7V / 200mAh (approx. 20mins recording time) Battery design allows the 'Auto Power Off' feature to function in event of power loss within the vehicle. It is not intended as an alternative power source to replace the supplied car adaptor.
Unit Dimensions	105.5 x 54.4 x 26.1mm
Unit Weight	101g
GPS Module	SiRF Star III (159dBm)

PACKAGE CONTENTS

Please check the contents of your iN-CAR CAM product package. The actual products might appear slightly different from the pictures shown below.

iN-CAR CAM 	GPS Mount 	Car Power Cable 	USB Cable 
Manuals & Software Disk 	Quick Start Guide 		

PRODUCT FEATURES

Thank you for purchasing this NEXTBASE iN-CAR CAM product, in this section we will outline some of the features available with this device.

2.7" 16:9 LCD Colour Screen

Large screen for ease of use and viewing the playback of both videos and photos.

GPS Logger

GPS co-ordinates, date and time are recorded, the journey can then be viewed on Google Maps using the supplied PC playback software.

G Sensor / File Protection

In the event of an impact the device will automatically 'protect' the recording stopping the file from being over-written.

Individual files can also be 'protected' when viewed within playback mode.

Still Camera

Take still images with a variety of options / settings available.

Auto Shutdown Timer

Select how long you would like the device to continue recording once power has been removed.

Built-in Microphone & Speaker

Record audio to compliment the video recordings.

Automatic Start / Stop Technology

The iN-CAR CAM senses power supplied to the cigarette power socket as soon as the vehicle ignition is turned on and will start to record automatically.

When the ignition is turned off, the iN-CAR CAM will perform an automatic shutdown process.

Motion Detection

The device will detect motion and start recording automatically, useful for car park surveillance.

Note: iN-CAR CAM needs a permanently live power source for this feature to function.

This function is NOT required to be turned on for recording on journeys normally.

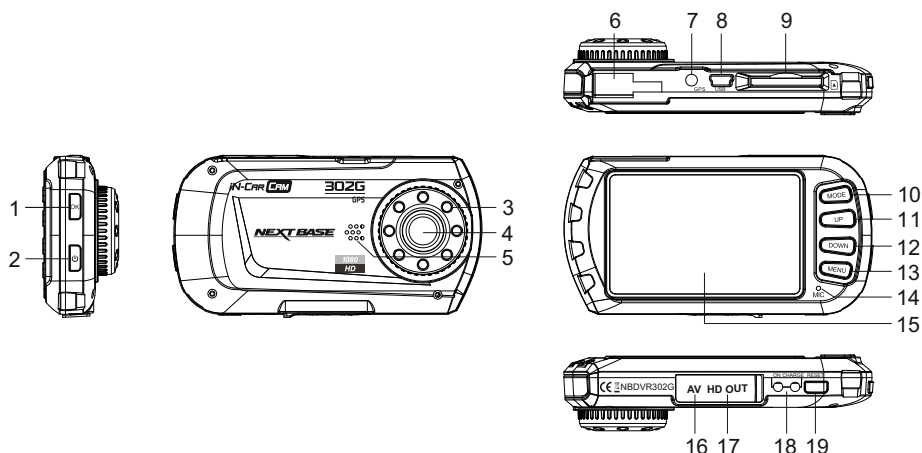
High Definition Output

View files directly from your device via a High Definition cable (not supplied) to an external screen.

Windows is a registered trademark of Microsoft Corporation in the United States and other countries.

2012 Google Inc. All rights reserved. Google Maps™ is a trademark of Google Inc.

CONTROLS



1. OK

Press to confirm selection or to start / stop a recording.

2. POWER

Press and hold for 2 seconds to turn on / off.

3. IR LEDS

Turn on/off within Setup menu to enable enhanced short range night time recording.

4. LENS

5. SPEAKER

6. MOUNTING POINT

Fixing point for windscreen GPS mount.

7. GPS SOCKET

Connect GPS aerial cable here.

8. MINI USB 2.0 SOCKET

Connect car power cable / USB cable here.

9. MEMORY CARD SLOT

Insert memory card here.
Compatible with SDHC <=32GB,
Class 6-10.
Full sized SD Card recommended.

10. MODE

Press to select mode:
Video / Photo / Playback

11. UP

Press to zoom in when in video & photo modes and to navigate up within menus.

12. DOWN

Press to zoom out when in video & photo modes and to navigate down within menus.

13. MENU

Press to open the Menu within current mode.
Press twice to open the Setup menu,
(not available whilst recording).

14. MICROPHONE

Turn on/off within Setup menu to enable audio recording.

15. SCREEN

16. AV OUT SOCKET (under dust cover)

For use with AV Cable (sold separately).

17. HD OUT SOCKET (under dust cover)

For use with High Definition Cable
(sold separately).

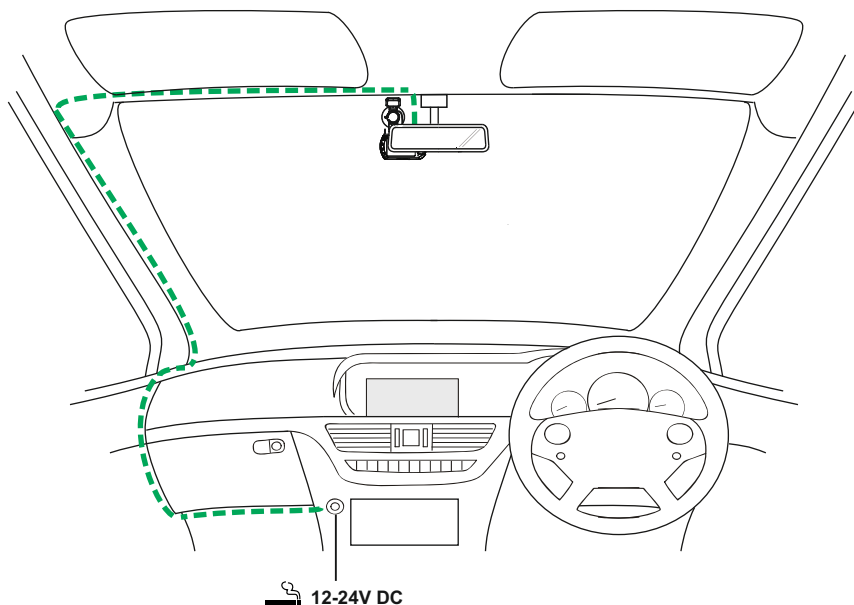
18. LED INDICATORS

Green = Battery is charging, LED will
turn off once the battery is
fully charged.
Red = Power on.

19. RESET

Press to reset the iN-CAR CAM.

INSTALLATION



The above diagram is for illustration purposes only.

1. Insert memory card (Class 6 or higher) in to the iN-CAR CAM, taking care to follow correct orientation markings (gold contacts facing the back of the device). Push the memory card until it clicks into place.
Do not remove or insert the memory card when the iN-CAR CAM is powered on, this may damage the memory card.

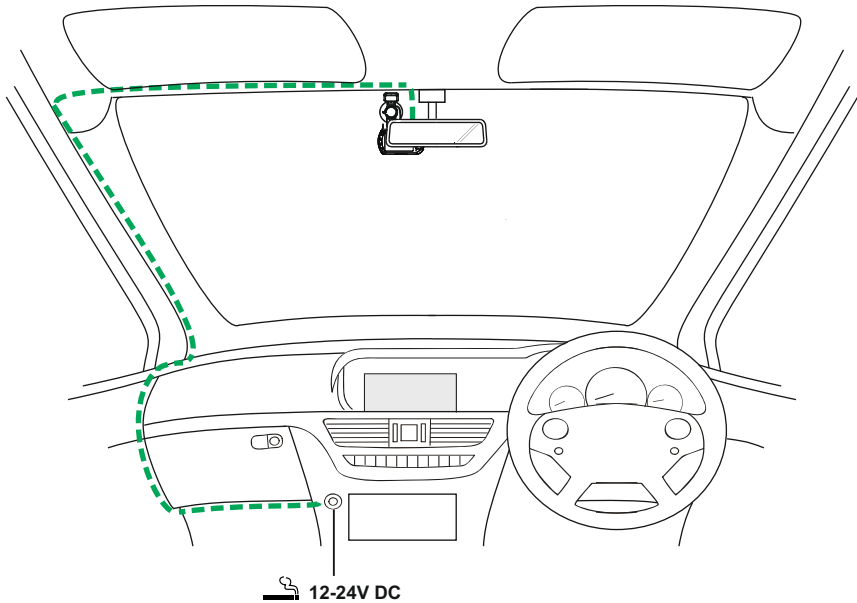
Note:

- Use the edge of a small coin (or similar object) to push the memory card in place if required, a second push inwards will release the memory card.

2. Attach the iN-CAR CAM to the supplied windscreen mount, taking care the locking tab has 'clicked' firmly into place and plug the aerial cable connector into the socket marked GPS.
3. Remove the protective plastic film from the suction pad. Select suitable position for the mount and clean windscreen with a dry / clean cloth to achieve good contact between the glass and mount, while pushing the suction cup onto the glass turn the locking wheel clockwise to secure the mount to the windscreen, ensure placement of the GPS mount is such that the GPS aerial is not obstructed by the roof of the vehicle.
Please ensure that once mounted the iN-CAR CAM lens is located within the area of the vehicles windscreen wipers to maintain a clear view during rainfall.
4. Connect the supplied car adaptor to mini-USB socket of the iN-CAR CAM and then plug the car adaptor into the 12-24Vdc outlet of your vehicle. The device will automatically power on and start recording once power is available.
In some vehicles this will be when connection is made, for others the device will power on once the ignition has been turned on.

Note:

- Do NOT wire the iN-CAR CAM directly to a 12V supply or damage will result.
- Always use the supplied car adaptor cable to supply 5Vdc to the iN-CAR CAM.

INSTALLATION (CONTD.)

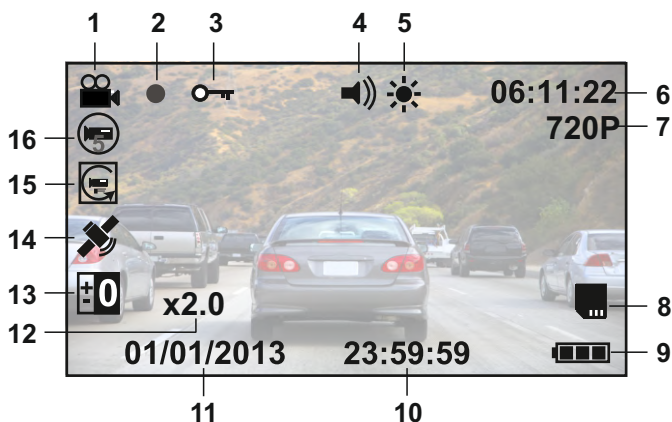
The above diagram is for illustration purposes only.

Note:

- Your iN-CAR-CAM is shipped with the Screen Saver function set to Default OFF. This is for ease of initial setup.
Once setup is complete, the screen saver should be set to 10 seconds, in order to blank the screen completely whilst driving. This avoids any potential distraction and may be a legal requirement in some countries.
- It is recommended to position your iN-CAR CAM on the passenger side of the car, behind the rear view mirror, as shown above. Whilst the camera needs to be located in a position within the wiper swept area, do not allow the camera to obstruct your vision of the road ahead. Recommended position is no more than 40mm within the wiper swept area.
- Do NOT mount the camera directly in front of the driver.
- Do not place the iN-CAR CAM in such a way that it may interfere with the deployment of air bags or other safety equipment.
- Do not operate the unit while driving.
- To reduce the risk of theft, remove the unit and the mount from your vehicle, or position out of sight, before leaving your vehicle unattended.
- In vehicles where the 12V / 24V output remains on when ignition is turned off please disconnect the device when not in use.
- The supplied car adaptor has a 4m long cable to allow cable to be placed neatly within the vehicle. Make sure that the iN-CAR CAM power cable does not interfere with the drivers operating controls, such as the steering wheel, pedals or gear levers.
- First time use of the device will require the Time and Date to be set. See Page 16 for details.

VIDEO MODE

The key below explains the various information displayed on the screen when your iN-CAR CAM is in Video mode, some icons will only be displayed once the relevant function has been selected within the Video menu, as described further down this page.



1. Video Mode Icon: Indicates the iN-CAR CAM is in Video mode.
2. Recording Indicator: Flashes red when a recording is in progress.
3. Protected File Icon: Displayed when a video file has been protected by activation of the internal G Sensor.
4. Audio Icon: Icon will be marked with a cross when the record audio function has been turned off within the Video menu.
5. IR LED Icon: This icon appears if the IR LED function is switched on from within the Video menu.
6. Recording Time: Displays the length of current recording. When a recording is not in progress the remaining recording time available on the memory card based on current resolution is displayed.
7. Resolution: Displays the current resolution as selected from within the Video menu.
8. Memory Card Icon: Icon will be marked with a cross when there is no memory card inserted.
9. Battery Indicator: Displays battery level, it is recommended to keep the car adaptor plugged in during use.
10. Time: Displays current time as set within the Setup menu.
11. Date: Displays current date as set within the Setup menu.
12. Zoom Icon: If Zoom is used by pressing the UP and DOWN buttons, the zoom level is displayed here.
13. Exposure Icon: Displays current exposure setting as selected from within the Video menu.
14. GPS Icon: The icon will flash while the iN-CAR CAM locates satellites. Once a stable signal is received, the icon will stop flashing and remain on screen.
15. Motion Detection Icon: This icon appears if motion detection is switched on from within the Video menu.
16. Loop Recording Icon: Displays current recording chunk time setting as selected from within the Video menu.

See next page for information on how to access the Video Setup menu.

VIDEO MODE (CONTD.)

The Video menu is accessed by using the MENU button located on the rear of the iN-CAR CAM, use the UP and DOWN buttons to navigate through the Menu and press the OK button to enter the options screen. Select the required setting press OK to confirm, press MENU once more to exit the Video Menu.

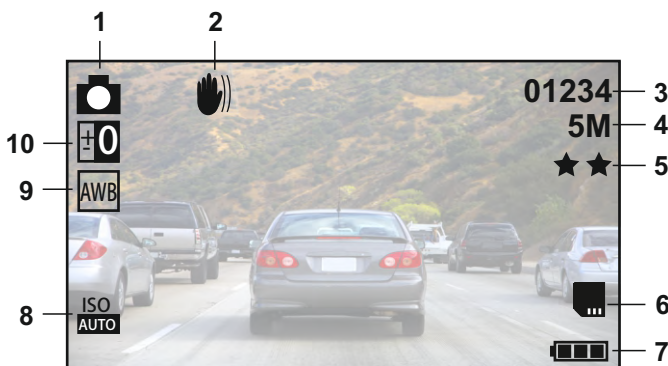
The default settings within the iN-CAR CAM have been set to allow you to use the iN-CAR CAM without the need to change any settings, however it is recommended that you explore these settings to familiarise yourself with the product and it's capabilities.

Note:

- Within the SETUP menu which is accessed from within any mode by pressing the MENU button twice, there is a 'Default Setting' option to allow you to reset the iN-CAR CAM to the factory defaults if required.

PHOTO MODE

The key below explains the various information displayed on the screen when your iN-CAR CAM is in Photo mode, some icons will only be displayed once the relevant function has been selected within the Video menu, as described further down this page.



1. Photo Mode Icon: Indicates the iN-CAR CAM is in Photo mode.
2. Anti-Shaking Icon: Displayed on screen when the Anti-Shaking enhancement has been enabled from within the Photo menu.
3. Image Count: Displays number of images that can be stored on the memory card based on current image quality settings.
4. Resolution: Displays the current resolution as set within the Photo menu.
5. Quality: Displays the current image quality as set within the Photo menu.
6. Memory Card Icon: Icon will be marked with a red line when there is no memory card inserted.
7. Battery Indicator: Displays battery level, it is recommended to keep the car adaptor plugged in during use.
8. ISO Icon: Displays the current ISO setting as selected within the Photo menu.
9. White Balance Icon: Displays the current White Balance setting as selected within the Photo menu.
10. Exposure Icon: Displays current exposure setting as selected from within the Photo menu.

The Photo menu is accessed by using the MENU button located on the rear of the iN-CAR CAM, use the UP and DOWN buttons to navigate through the Menu and press the OK button to enter the options screen. Select the required setting press OK to confirm, press MENU once more to exit the Photo Menu.

The default settings within the iN-CAR CAM have been set to allow you to use the iN-CAR CAM without the need to change any settings, however it is recommended that you explore these settings to familiarise yourself with the product and it's capabilities.

Note:

- Within the SETUP menu which is accessed from within any mode by pressing the MENU button twice, there is a 'Default Setting' option to allow you to reset the iN-CAR CAM to the factory defaults if required.

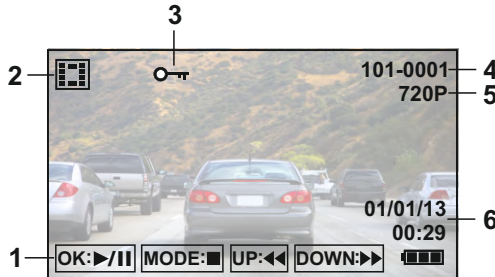
PLAYBACK MODE

The iN-CAR CAM can display both Videos and Photos stored upon the SD card when in Playback Mode. As the displays are slightly different please refer to the two sections below.

VIDEO PLAYBACK

When a video is detected upon the SD Card, the screen below is shown.

The key below explains the various information displayed on the screen, during video playback and how to use the control buttons.



1. Control Buttons: To scroll through the saved files use the UP and DOWN buttons, to view a chosen video press the OK button which acts as a play / pause button. During video playback, the UP and DOWN buttons will serve as rewind and fast forward, press the MODE button to stop playback and press MODE button again to exit playback mode.
2. Video Playback Icon: Indicates the iN-CAR CAM is displaying a video in the Playback mode.
3. Protected File Icon: Displayed when a video file has been protected by activation of the internal G Sensor during recording or by selecting 'Protect' from within the playback menu.
4. File Number: Displays current file number.
5. Resolution: Displays the resolution that current video was recorded in.
6. Date & Time: Displays date and time of current file.

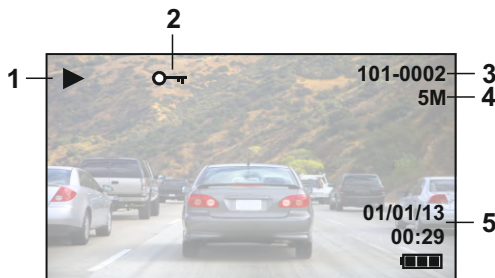
Note:

- If the screen should blank during video playback, then simply turn off the 'Screen Saver' function from with the Setup Menu.

PHOTO PLAYBACK

When a photo is detected upon the SD Card, then the screen below is shown.

The key below explains the various information displayed on the screen, during photo playback.



1. Photo Playback Icon: Indicates the iN-CAR CAM is displaying a photo in the Playback mode.
2. Protected File Icon: Displayed when a photo file has been protected by selecting 'Protect' from within the playback menu.
3. File Number: Displays current file number.
4. Resolution: Displays the size of current photo.
5. Date & Time: Displays date and time of current file.

MENUS AND SETTINGS

Each mode (Video, Photo and Playback) has a menu used to access the various options and settings, press the MENU button on the rear of the device to access the menu, specific to the current mode selected.

Use the UP, DOWN buttons to select chosen option and press the OK button to confirm.

1. VIDEO MODE

1.1 Resolution

Select recording resolution, this will increase or decrease the quality of the recorded video.
Default Setting: 720P (1280 x 720 @ 30Fps)

1.2 Loop Recording

This feature enables continuous recording of your whole journey to be made, but the recording is broken down in to manageable bite sized chunks. In the event of an incident you will always have the latest video footage, for play back later and in a manageable file size. Each bite sized chunk can be set to either 2, 3 or 5 minutes long.
Default Setting: = 3 Mins

Note:

- When the SD card becomes full of recordings from your journey, the oldest recordings are deleted automatically, in order to make space for the new recordings (any protected files are however not deleted).
- The OFF setting is NOT preferred, as this will result in massive file sizes, which are then unmanageable and risk being corrupted.

1.3 Motion Detection

Turn On / Off the motion detection function, the device will need to remain powered on and will start a 30 second recording when a change to the viewed scene is detected.
Default Setting: Off

Note:

Motion Detection is NOT required for the recording of normal driving situations. Please do select On unless strictly necessary.

1.4 G Sensor

Turn Off or adjust the sensitivity of the G Sensor, it is the G Sensor that detects forces which will automatically protect the current recording in event of a collision.
Default Setting: Medium

1.5 Record Audio

Turn On / Off audio recording.
Default Setting: On

1.6 Exposure

Select exposure, used to adjust exposure level for different light conditions.
Default Setting: 0

1.7 Date & Speed Stamp

Turn On / Off the date and speed stamp shown on recorded files.
Default Setting: On

1.8 Speed Units

Selected required speed units, MPH or KPH.
Default Setting: MPH

MENUS AND SETTINGS (CONTD.)

2. PHOTO MODE

2.1 Capture Mode

Turn On / Off the timer function, when this feature has been turned on, the iN-CAR CAM will take a photo the selected period of time after the OK button has been pressed.

Default Setting: Single

2.2 Resolution

Select image size, this will increase or decrease the size of the recorded image

Default Setting: 5M

2.3 Quality

Increase or decrease the quality of the recorded image.

Default Setting: Fine

2.4 Sharpness

Adjust the sharpness of the recorded image.

Default Setting: Normal

2.5 White Balance

Adjust the white balance for different light conditions.

Default Setting: Auto

2.6 Colour

Adjust the colour effect of the recorded image.

Default Setting: Normal

2.7 Exposure

Select exposure, used to adjust the amount of light received by the sensor.

Default Setting: 0

2.8 ISO

Adjust the ISO setting, the brighter the conditions the lower the ISO required.

Default Setting: Auto

2.9 Anti-Shaking

Turn On / Off the anti-shaking feature, may help reduce image being blurred under some circumstances.

Default Setting: On

2.10 Quick Review

Turn On / Off or adjust the duration of the quick review function when a photograph is taken.

Default setting: 2 Seconds

2.11 Date Stamp

Turn Off the date stamp shown on recorded photographs, can also change to date only.

Default Setting: ON (Date / Time)

3. PLAYBACK MODE

The playback menu is the same when viewing either videos or photos.

3.1 Delete

Used to delete the current file, also available is the option of deleting all files.

3.2 Protect

Lock or unlock the current file, also available is the option of locking and unlocking all files.

MENUS AND SETTINGS (CONTD.)

4. SETUP MENU

There is also a Setup menu for the general settings, press the MENU button twice on the rear of the device to access the menu. The options and settings available are described below.

4.1 Date / Time

Adjust the date / time as required using the OK button to toggle through fields, press the UP and DOWN buttons to set variables.

Note: In event of battery becoming fully dis-charged, the date will reset to 01/01/2013.

4.2 Auto Power Off

Adjust the timing of the Auto Power Off function, this can be used to continue recording in event of loss of power within in the vehicle, with options of 10 Seconds. 2 Minutes and 5 Minutes.

Default Setting: 10 Seconds

4.3 Screen Saver

Turn on the Screen Saver function, shut down the screen after a period of inactivity, with options of 10 Seconds, 30 Seconds and 2 Minutes. Press any button to re-activate the display.

Default Setting: Off

4.4 IR LED's

Turn on the IR LEDs for enhanced short range night time recording.

Default Setting: Off

Note:

- The IR LED's are for short range use only. Vehicle headlights will provide illumination for night time recording

4.5 Beep Sound

Turn Off / On the beep sound, note if Beep is turned off the audible low-battery warning will also be disabled.

Default Setting: On

4.6 Language

Set the language as required.

Default Setting: English

4.7 Frequency

Set the Frequency as required.

Default Setting: 50Hz

4.8 TV Mode

Set the TV Mode as required.

Default Setting: PAL

4.9 Default Setting

Reset the device to the default settings.

5.0 Format

Format the inserted memory card, this will delete all content.

5.1 Version

Display the version number of your device's software.

PC CONNECTION

Connecting the iN-CAR CAM to a Windows based PC using the supplied USB Cable will automatically trigger the iN-CAR CAM to display the two options of:

- Mass Storage
- PC Camera

Use the UP and DOWN buttons to select preferred option and OK to confirm.

Mass Storage

If Mass Storage is selected, the iN-CAR CAM screen will blank and then take the function of an SD Card reader for your PC. Upon your PC an extra drive will appear (e.g. Drive E:) and you will be able to navigate through the SD Card and view / manage stored files.

This feature is useful if you do not have an SD Card reader built in to your PC.

Note: Two drives will appear, only one of which is accessible.

PC Camera

If PC Camera is selected, the iN-CAR CAM screen will show the words 'PC Camera' and then take the function of a Webcam (no audio) for your PC. Start the normal application upon your PC that uses a webcam (e.g. Skype) and select the webcam which is entitled 'USB Video Device'.

This feature is useful if you do not have a Webcam built in to your PC.

Note:

- The iN-CAR CAM is only compatible with the following Windows based operating systems: XP, VISTA, Windows 7 and Windows 8.

VIDEO & AUDIO OUTPUT

High Definition Output

As you connect a High Definition Cable (sold separately) between the iN-CAR CAM and your television, the iN-CAR CAM screen will blank, as all output is now visible upon your television. The external monitor can now be used for playback and as a larger viewfinder in Photo mode. Recordings can NOT be made in Video mode with HD connected.

The controls upon the iN-CAR CAM operate for the Play / Pause, STOP, Next / Previous and Fwd / Rev functions as shown on screen.

Standard Definition Output

As you connect an AV Cable (sold separately) between the iN-CAR CAM and your television, the iN-CAR CAM screen will blank, as all output is now visible upon your television. All elements of the Video, Photo and Playback are available via the AV output so you can monitor your recordings upon a larger screen instantly (useful for when using your iN-CAR CAM as a rear facing camera while connected to another device for viewing).

The controls upon the iN-CAR CAM operate normally.

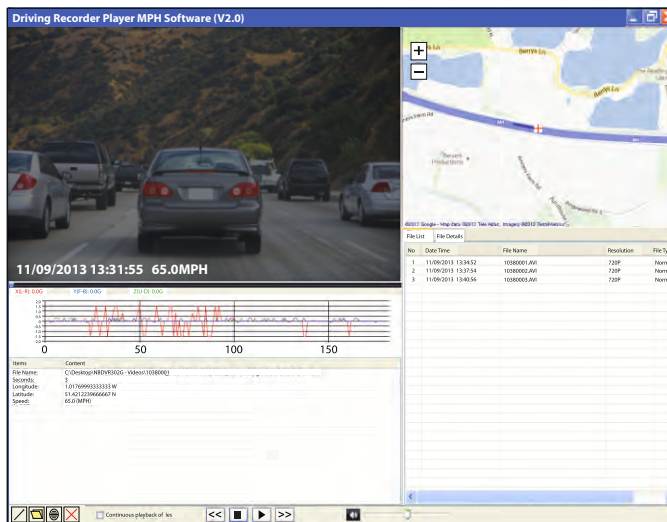
Please contact your local NEXTBASE dealer for accessory purchases.

DRIVING RECORDER PLAYER

This section will guide you through the installation of the Driving Recorder Player software, designed to enable the viewing of recorded files as well as checking journey route / GPS data (location and speed) and G Sensor information.

Software is compatible with Microsoft Windows operating systems: XP, Vista, Windows 7 & Windows 8.

Note: This software is NOT compatible with MAC operating systems.



SYSTEM MINIMUM REQUIREMENTS:

Processor (CPU): Pentium III 500 MHz or Celeron at 800 MHz

Operating System: Windows XP, Vista, Windows 7, Windows 8

Memory: 1 GB RAM

Storage: 500Mb Internal hard drive space

CD-ROM: Tray / Slot Loader

DVD/CD-RW

Monitor/Display: 1024 x 766

Insert the supplied Driving Recorder Player disk in to the CD drive, navigate and display the contents upon the disk:

- NBDVR302G Instruction Manual (inc. Driving Recorder Player Installation Guide)
Multiple Languages available
- NBDVR302G Driving Recorder Player for Windows (MPH)
- NBDVR302G Driving Recorder Player for Windows (KPH)

Note:

- These files are available for download from the Nextbase website: www.nextbase.co.uk, if required.

Please see following pages for step by step installation instructions.

DRIVING RECORDER PLAYER - INSTALLATION

Open the required 'NBDVR302G Driving Recorder Player for Windows' folder, choosing from either the 'MPH' or 'KPH' versions.

Run the 'setup.exe' file and installation will begin with the window below opening.



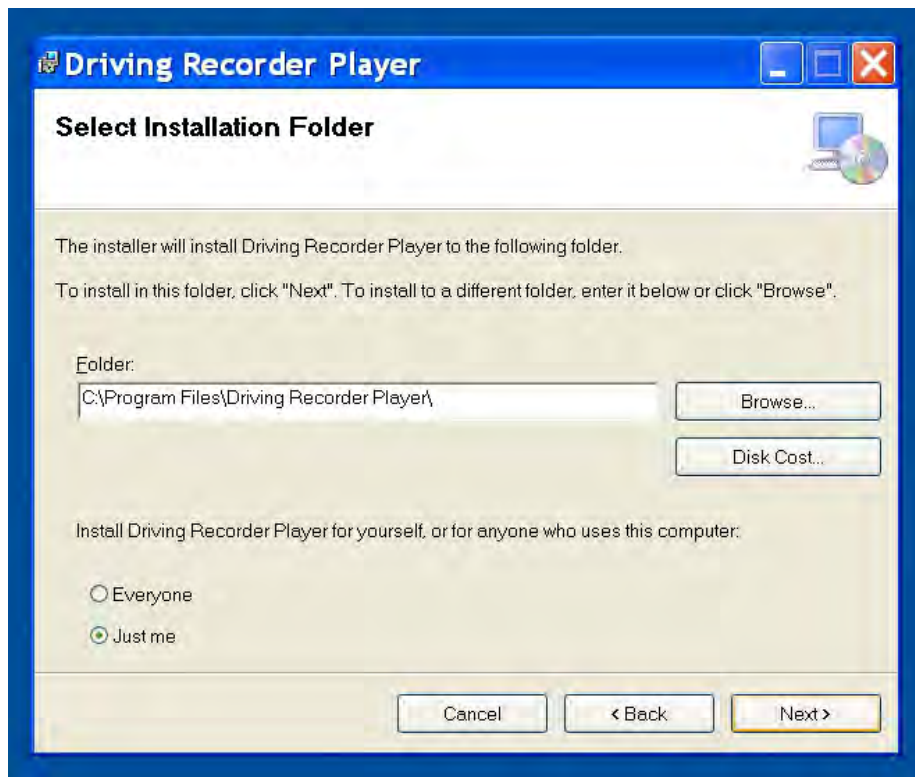
Note:

- On some older Windows XP computers, you may be prompted to install Microsoft .NET Framework. This is normal and enables the Driving Recorder Player software to run. Simply follow the on screen instructions and click 'Accept' where required.

Press 'Next' to continue the installation.

DRIVING RECORDER PLAYER - INSTALLATION (CONTD.)

The 'Select Installation Folder' window will open, as shown below.

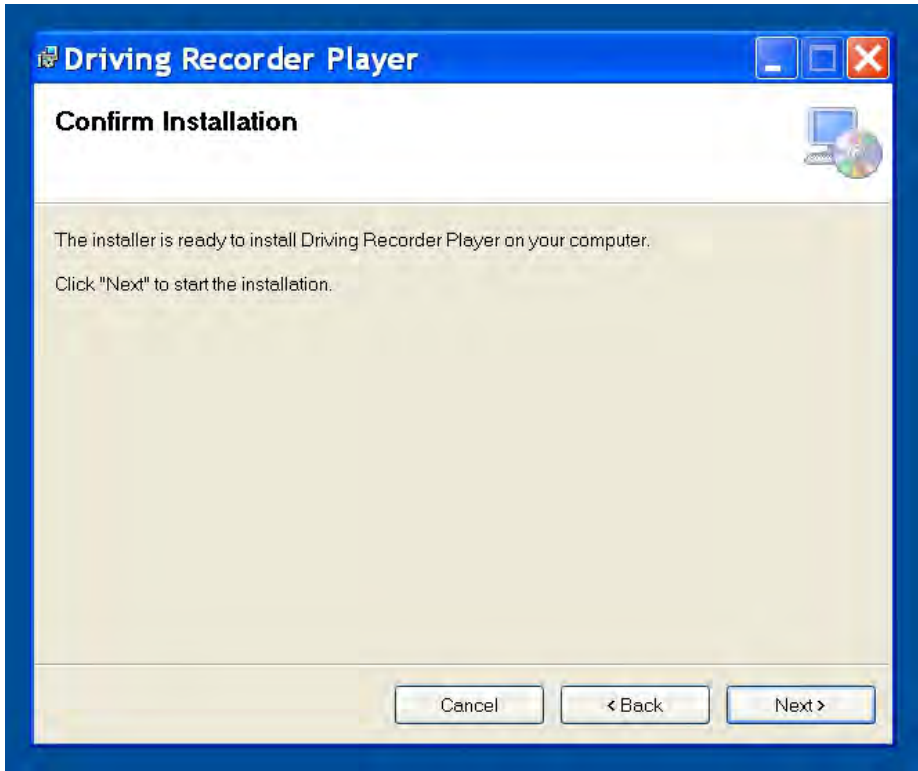


Choose a destination folder should you not want files saved to the default folder within the Program Files directory.

Press 'Next' to continue.

DRIVING RECORDER PLAYER - INSTALLATION (CONTD.)

The 'Confirm Installation' window will open, as shown below.



Press 'Next' to continue.

DRIVING RECORDER PLAYER - INSTALLATION (CONTD.)

The 'Installing Driving Recorder Player' window will open, as shown below.



DRIVING RECORDER PLAYER - INSTALLATION (CONTD.)

Once installation is complete the 'Driving Recorder Player' icon will appear on your desktop.



Press 'Close' to exit the installer window.

Double click the Driving Recorder player icon to open the player.

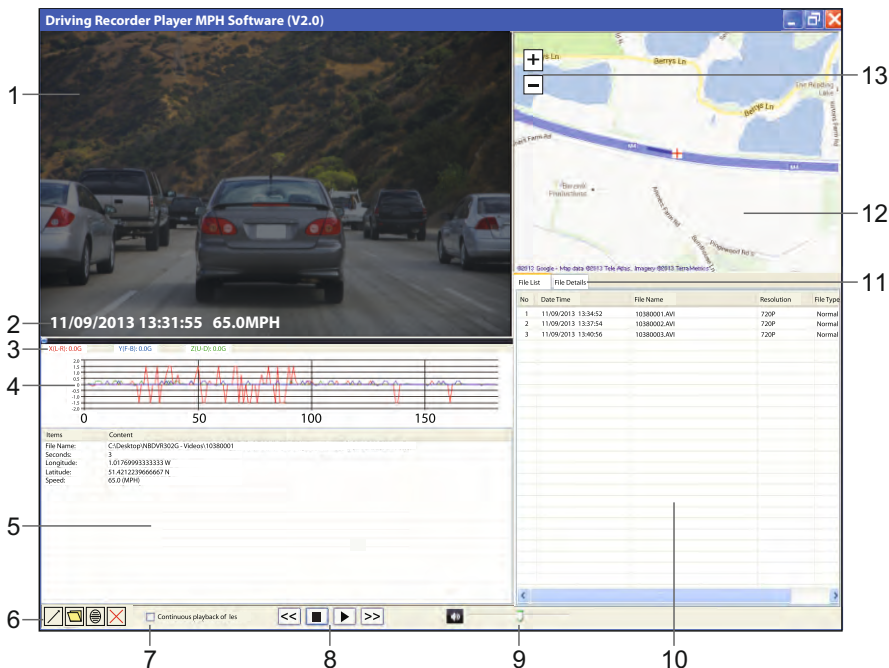
Note:

- For some operating systems additional / different steps may be required.
- Some anti-virus software may consider the installation of this software as a threat, this is normal and not a cause for concern, please toggle off the anti-virus software, or choose to allow the installation to continue.
- Installation instructions are also available with the downloaded setup file.
- For some operating systems the installation process may vary.
- Functions and appearance of the Driving Recorder Player may vary depending on which Windows operating system is being used.
- GPS reception can be affected by many factors: Heated front windscreens, atmospheric conditions, window tinting, electronic devices, proximity to buildings etc., therefore device positioning and recorded speed may appear erratic at times. This is normal and not to be considered a manufacturing defect.
- Speed may be inaccurate due to the processing time required to re-calibrate the speed when acceleration and de-acceleration takes place.
- Recorded data may be beneficial in event of an incident, however please note that it may be deemed inadmissible in a court of law.

Should you experience any difficulties during installation please do not hesitate to call our English speaking technical support team on +44 (0)2920 866429, lines are open during normal business operating hours: 09:00-17:30hrs.

DRIVING RECORDER PLAYER - CONTROLS

The key below explains the various information displayed within the Driving Recorder Player when using a Windows platform.



1. Playback window of selected video file

Displays selected video file video.

2. Date / Time / Speed Stamp

Data saved to the recorded file, this content may vary depending on iN-CAR CAM settings and GPS signal.

3. G Sensor data

Displays the current data for the three axis, X = left/right, Y = forwards/backwards, Z = up/down. The three axis are colour coded for easy identification.

4. G Sensor graph





Displays the recorded G Sensor data for current file as a graph. The three axis are colour coded for easy identification.

5. File Details window

File Name: Displays the file name for video being viewed.
 Seconds: Data refreshes each second, current position within video being viewed is shown here by the second.
 Longitude: Displays current longitude co-ordinates as a decimal number.
 Latitude: Displays current latitude co-ordinates as a decimal number.
 Speed: Displays current speed.

DRIVING RECORDER PLAYER - CONTROLS (CONTD.)





6. Driving Recorder Player controls

-  Maximise playback window, press Esc key to return to normal playback window.
-  Browse for files stored on your computer to add to the File List window.
-  Capture map as an .png file.
-  Delete selected file within the File List.

7. Continuous playback of files

Tick box to allow continuous playback of files within the file list window.

8. Playback controls

-  Rewind current video in 4 second increments, press again to return to normal playback.
-  Stop current video, note the video must be stopped before playback of another video file can begin.
-  Play / Pause selected video.
-  Fast Forward current video in 4 second increments, press again to return to normal playback.

9. Volume

Adjust playback volume.

10. File List window

Displays files that have been added to player, select a file and press play button to start playback.

11. File Details

Used to display the Date/Time, Speed and G Sensor data for each second of the current file.

12. Map

Displays route travelled on map, only available when the video files was recorded when satellite connection was present and playback has an internet connection.

13. Zoom Controls

Increase or decrease the zoom level on map.

DRIVING RECORDER PLAYER - OPERATION

How to use the Driving Recorder Player

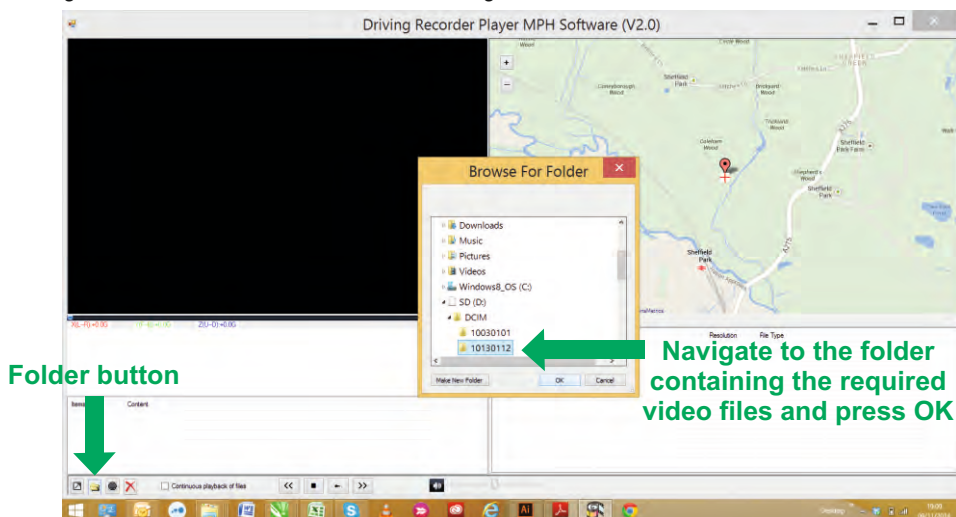
Remove the SD Card from your iN-CAR CAM and insert it directly to the card reader on your PC, alternatively connect the iN-CAR CAM to your PC using the supplied USB cable as described in the Mass Storage section, on page 17.

Close any pop up messages and/or any media players which may automatically open when a SD card or video files are detected.

Open the Driving Recorder Player software.

Import videos files to the Driving Recorder Player:

Located in the bottom left hand corner of the Driving Recorder Player window are the player controls, click on the folder button. This will open a separate window which will allow you to browse your PC, navigate to the SD card and it's content, see image below.



Once you have located and highlighted the required folder, for example:

Removable Disk (D:) - DCIM - 10030101, press OK.

This will add the files within the selected folder to the 'File List' window of the Driving Recorder Player, see item 10 on pages 24 and 25.

Playback:

Choose a video file to play, double click upon it to begin playback.

Once the file is playing, you can use the playback controls (8) for pause, forward, reverse as required. Please stop playback before selecting another file.

Note:

- Playback via the USB Cable may result in playback jumping / freezing due to the transfer rate of data, it is recommended that the files are viewed directly from your PC's card reader - if you do not have a card reader available, please copy files from the iN-CAR CAM to your PC and use these for playback.
- Functions and operation of the driving Recorder Player may vary dependant on your PC's operating system.
- GPS data will only be displayed when a GPS signal was present during the recording.
- In event of loss of GPS signal the map will freeze until the GPS data is once more available.

TROUBLE SHOOTING

PROBLEM	SOLUTION
The iN-CAR CAM can not lock onto satellite.	After power on and with the device mounted with clear view of the sky it can take up to 10 minutes to find the three satellites required to achieve a stable signal. Reception can also be affected by atmospheric conditions and the proximity of buildings / trees obscuring the sky, heated or reflective windscreens. Turn iN-CAR CAM off and on to restart GPS search procedure.
Video Image is blurred.	Remove the protective lens cover, clean the lens, clean the windscreen inside and out.
Video recording is jumpy or freezes.	Remove the SD card and reformat to remove non-contiguous files. For best recording use a branded class 10 type (30MB/s) SD card of 8 to 32GB recommended size. Playback PC may not be sufficient for the playback software, try an alternative PC.
Video has no sound.	Ensure that "Record Audio" setting is turned ON within the Video Menu.
Photograph is blurred.	Hold the camera still whilst taking the photo. Please be aware the photo is taken around 1 second after the shutter noise is heard.
I can only record a few minutes of video on my SD card.	Change the recording size (Loop recording function) to a smaller size. Increase the size of the SD card. Max 32GB.
Mass Storage or PC Camera function does not work.	Will only work with Windows PC's. Restart the PC, as this may be required for the necessary driver to be loaded correctly. Disconnect and reconnect the In-CAR CAM. Contact NEXTBASE for the required driver.
The sucker will not stay in place upon my windscreen.	Ensure that the protective cover (plastic film) has been removed from the suction pad. Ensure that the rotary dial is fully counter clockwise. Make sure that the glass is smooth and clean. Do not stick to glass that has any non-smooth effect or paint whatsoever. Affix to the glass firmly and then rotate the dial clockwise, until the latch is felt to engage.
The AV Out from my iN-CAR CAM just buzzes on my TV.	Ensure that the AV cable is correct. Use a stereo 3.5mm jack plug where the tip is the video and the ring is the audio signal.
I get the message "SD Card Error" on screen.	The SD card has become unuseable by the iN-CAR CAM. Remove useful files using your PC and then perform a "FORMAT" upon the SD card from within the SETUP menu.
I get the message "Memory error" on screen.	The SD card has become unuseable by the iN-CAR CAM. Remove useful files using your PC and then perform a "FORMAT" upon the SD card from within the SETUP menu.
I get the message "SD Card Full" on screen.	The SD card has become full as the Loop recording function is set to OFF. Set the "Loop Recording" function to 3mins (default) to enable the cycle recording function and automatic deletion of older files.
With the IR LED's turned on, they do not seem to enable night time recording at a distance, in zero light conditions.	Normal. The IR LED's are intended for short range use only. For night time recording the vehicle headlights provide the illumination of the road ahead.
My iN-CAR CAM shuts down by itself after a while.	Either the battery has gone flat, or there is no power to the iN-CAR CAM and the AutoPower Off period (which is in the SETUP menu) has been triggered.
No power to my iN-CAR CAM, but it works upon my PC.	The cigarette power cable is not working. Inspect the fuse in the Car Power plug. Replacement fuse = 2A 20mm type. If the fuse is found to be blown, inspect the power cable for damage which may have caused the fuse blow.

TROUBLE SHOOTING (CONTD.)

PROBLEM	SOLUTION
The SD card in my iN-CAR CAM can not be read.	Use a good quality branded SD card between 8GB and 32GB (suggested) and format the card from within the SETUP menu of the iN-CAR CAM.
I can't delete files on my SD card within the iN-CAR CAM.	Check to see if these files are 'protected', if so please follow instructions to 'un-protect'
The screen blanks after a few minutes upon my iN-CAR CAM.	The screen saver is set to ON. Change settings to OFF if required. Default setting is off.
I get the message "Cluster Wrong" on screen.	The SD card has been formatted in another device and the Cluster Size is not compatible. Simply use the MENU, SETUP option to re-format the SD card from within the iN-CAR CAM.
I get the message "Card protected" on screen.	Remove the SD Card and slide the locking tab away from the 'Lock' position.
I have turned on 'motion detection' and now can't stop the recording.	The iN-CAR CAM will start a recording whenever motion is detected, when function is to be turned off firstly shutdown the iN-CAR CAM and remove the SD card, this will avoid recording being activated accidentally. Switch back on the and within the setting menu and turn off the 'Motion Detection'.
When I press the MENU button nothing happens.	This is normal during recording. Stop the recording before pressing the MENU button. If recording re-starts before you can press MENU, then see the Motion Detection section above.
Unresolved issues.	Reset the iN-CAR CAM to the default settings within the Setup Menu and try again. Should the problem persist call the helpline (02920) 866429 or email: support@nextbase.co.uk

NOTES

NOTES

NEXT BASE

www.nextbase.co.uk

