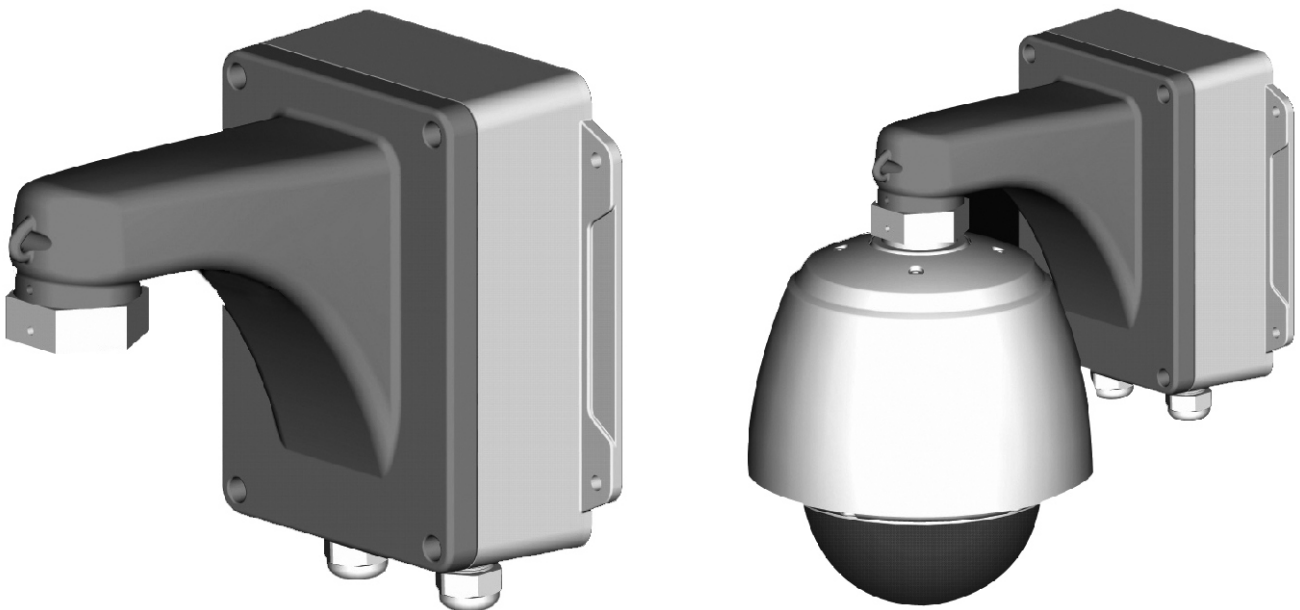


POWER BOX



Please read this manual thoroughly before use, and keep it handy for future reference.

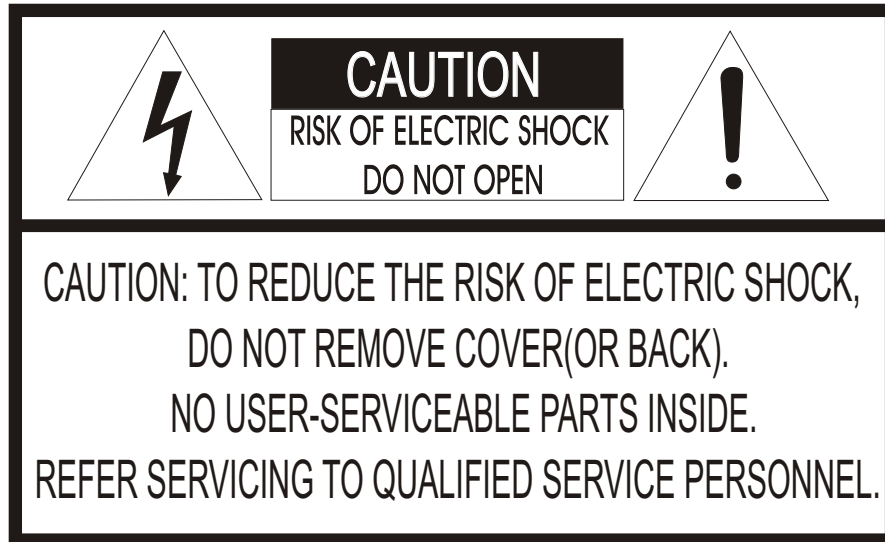
LIMITATION OF LIABILITY

THE INFORMATION IN THIS PUBLICATION IS BELIEVED TO BE ACCURATE IN ALL RESPECTS. HOWEVER, WE CANNOT ASSUME RESPONSIBILITY FOR ANY CONSEQUENCES RESULTING FROM THE USE THEREOF. THE INFORMATION CONTAINED HEREIN IS SUBJECT TO CHANGE WITHOUT NOTICE. REVISIONS OR NEW EDITIONS TO THIS PUBLICATION MAY BE ISSUED TO INCORPORATE SUCH CHANGES.

WARNINGS AND CAUTIONS:

TO REDUCE THE RISK OF FIRE OR ELECTRIC SHOCK, DO NOT EXPOSE THIS PRODUCT TO RAIN OR MOISTURE. DO NOT INSERT ANY METALLIC OBJECTS THROUGH THE VENTILATION GRILLS OR OTHER OPENINGS ON THE EQUIPMENT.

CAUTION:



EXPLANATION OF GRAPHICAL SYMBOLS



The lightning flash with arrowhead symbol, within an equilateral triangle, is intended to alert the user to the presence of uninsulated "dangerous voltage" within the product's enclosure that may be of sufficient magnitude to constitute a risk of electric shock to persons.



The exclamation point within an equilateral triangle is intended to alert the user to the presence of important operating and maintenance (servicing) instructions in the literature accompanying the product.

PRECAUTIONS

Safety -----

Should any liquid or solid object fall into the cabinet, unplug the unit and have it checked by the qualified personnel before operating it any further.

Unplug the unit from the wall outlet if it is not going to be used for several days or more. To disconnect the cord, pull it out by the plug. Never pull the cord itself.

Allow adequate air circulation to prevent internal heat build-up. Do not place the unit on surfaces (rugs, blankets, etc.) or near materials (curtains, draperies) that may block the ventilation holes. may block the ventilation holes.

Height and vertical linearity controls located at the rear panel are for special adjustments by qualified personnel only.

Installation -----

Do not install the unit in an extremely hot or humid place or in a place subject to excessive dust, mechanical vibration.

The unit is not designed to be waterproof. Exposure to rain or water may damage the unit.

Cleaning -----

Clean the unit with a slightly damp soft cloth. Use a mild household detergent. Never use strong solvents such as thinner or benzene as they might damage the finish of the unit.

Retain the original carton and packing materials for safe transport of this unit in the future.

IMPORTANT SAFEGUARDS

1. Read these instructions.
2. Keep these instructions.
3. Heed all warnings.
4. Follow all instructions.
5. Do not use this apparatus near water.
6. Clean only with dry cloth.
7. Do not block any ventilation openings. Install in accordance with the manufacturer's instructions.
8. Do not install near any heat sources such as radiators, heat registers, stoves, or other apparatus (including amplifiers) that product heat.
9. Do not defeat the safety purpose of the polarized or grounding type plug. A polarized plug has two blades with one wider than the other. A grounding type plug has two blades and a third grounding prong. The wide blade or the third prong is provided for your safety.
10. If the provided plug does not fit into your outlet, consult an electrician for replacement of the obsolete outlet.
11. Protect the power cord from being walked on or pinched particularly at plugs, convenience receptacles, and the point where exit from the apparatus.
12. Only use attachments/accessories specified by the manufacturer.
13. Unplug this apparatus during lightning storms or when unused for long periods of time.
14. Refer all servicing to qualified service personnel. Servicing is required when the apparatus has been damaged in any way, such as power-supply cord or plug is damaged, liquid has been spilled or objects have fallen into the apparatus, the apparatus has been exposed to rain or moisture, does not operate normally, or has been dropped.
15. CAUTION - THESE SERVICING INSTRUCTIONS ARE FOR USE BY QUALIFIED SERVICE PERSONNEL ONLY. TO REDUCE THE RISK OF ELECTRIC SHOCK DO NOT PERFORM ANY SERVICING OTHER THAN THAT CONTAINED IN THE OPERATING INSTRUCTIONS UNLESS YOU ARE QUALIFIED TO DO SO.
16. 24VAC Type Model: Use Certified/Listed Class 2 power supply transformer only.

FEATURES

- Simple and Easy Installation
- 4 Alarm Input and 2 Alarm Output Connection Capability
- RS- 485 Connection Capability
- Wall Mounting Die cast aluminum Box
- Included a Wall Mount at Front panel with Hinge
- Indoor/ Outdoor Applications
- Weatherproof - IP66

120VAC type model / 230VAC type model

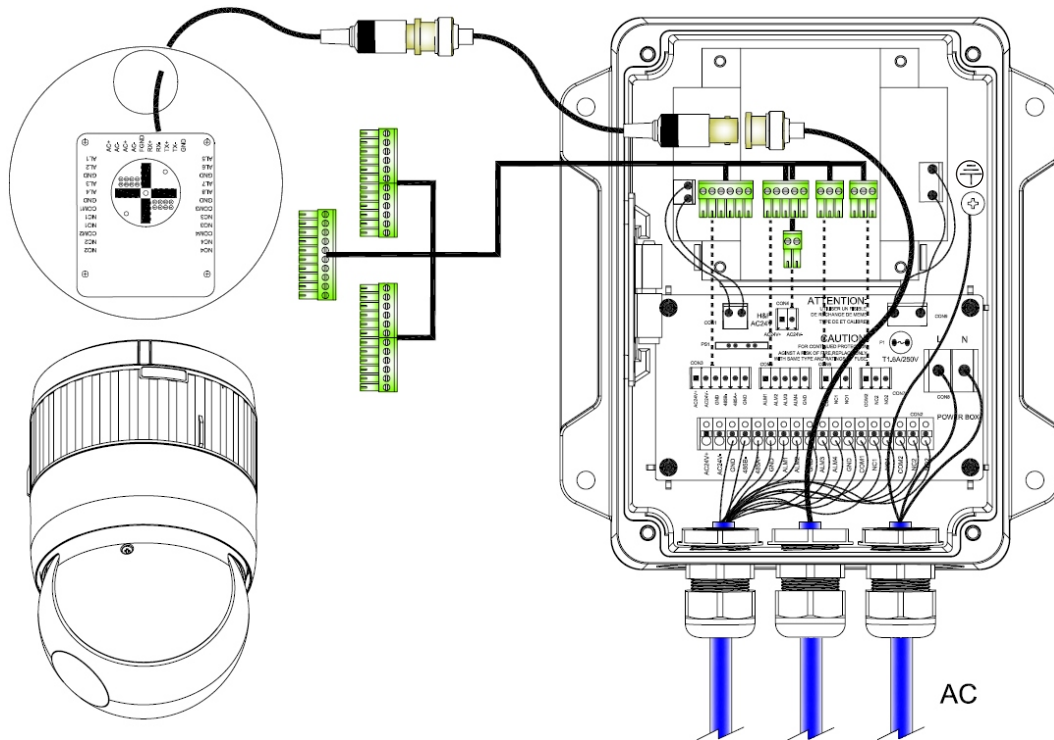
- Supply 24VAC Output with 3.0 Amp Current for a camera, a Heater and a Blower using the transformer

24VAC type model: No built-in transformer model

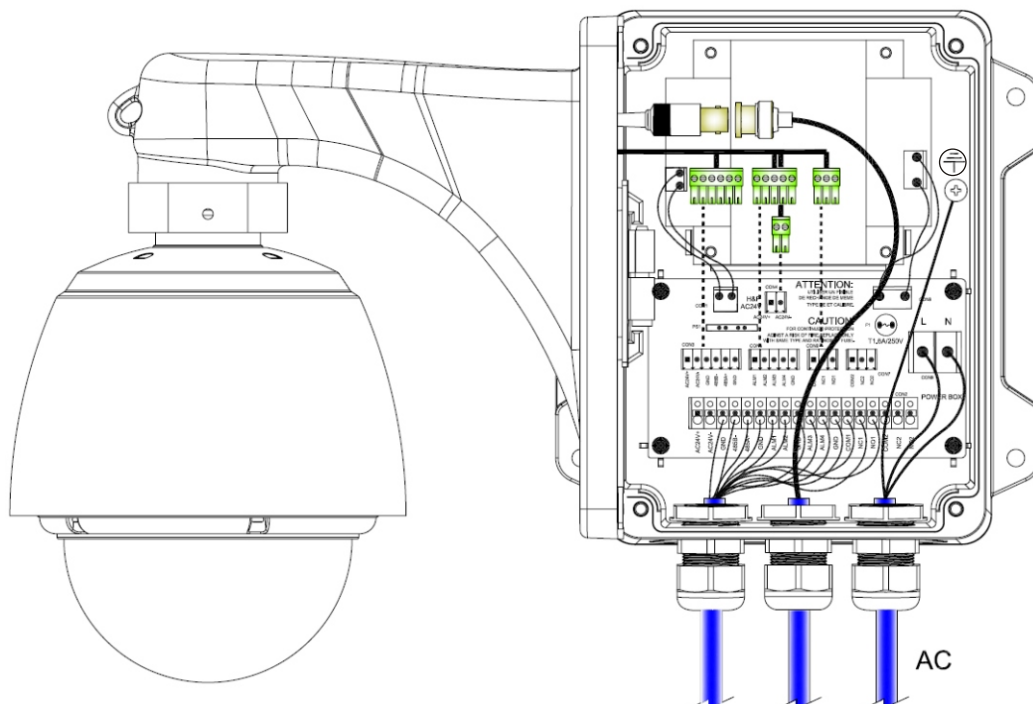
- Needs the external 24VAC Input over 3.0 Amp Current for a camera, a Heater and a Blower

■ INSTALLATION FOR 120VAC TYPE MODEL / 230VAC TYPE MODEL

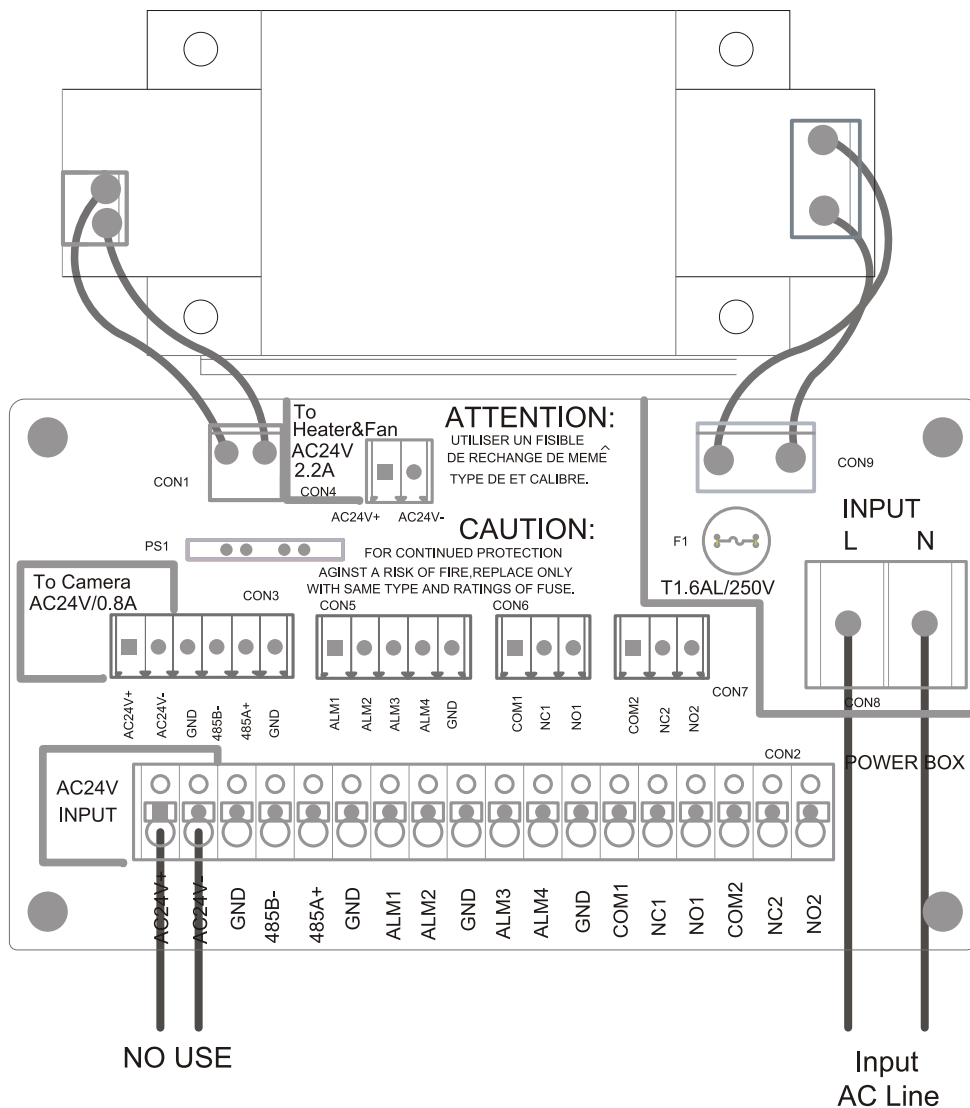
1) General Dome Camera



2) All-In-One Dome Camera



3) CONNECTION



CON4 : for one Heater and one fan with AC24V

CON3, CON5, CON6, CON7 : to the dome camera.

CON2 : for external connection

CON8 : for AC LINE connection (AC120V or AC230V)

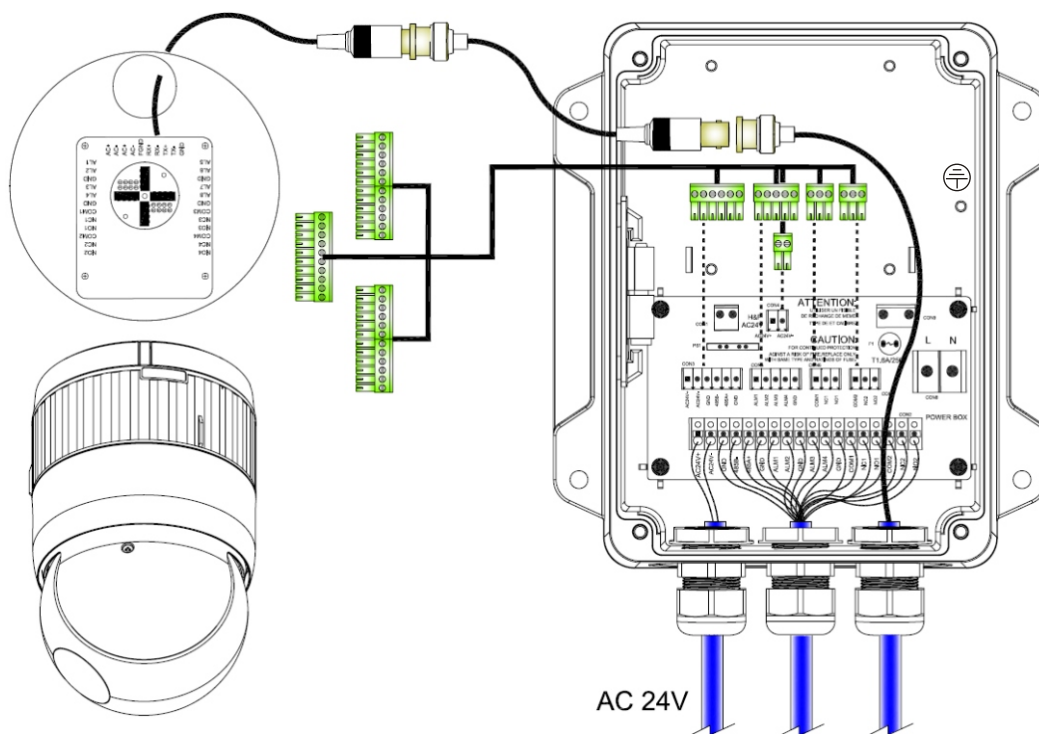
CAUTION : Power input cable uses suitable product to National Requirement by outdoor
: Minimum conductor size : 0.75mm² , 18AWG

Note : To make connections on the Connector Strip, press and hold the button and insert the wire in the hole below the button. After releasing the button, tug gently on the wire to make certain it is connected. To disconnect a wire, press and hold the button above the wire and pull out the wire.

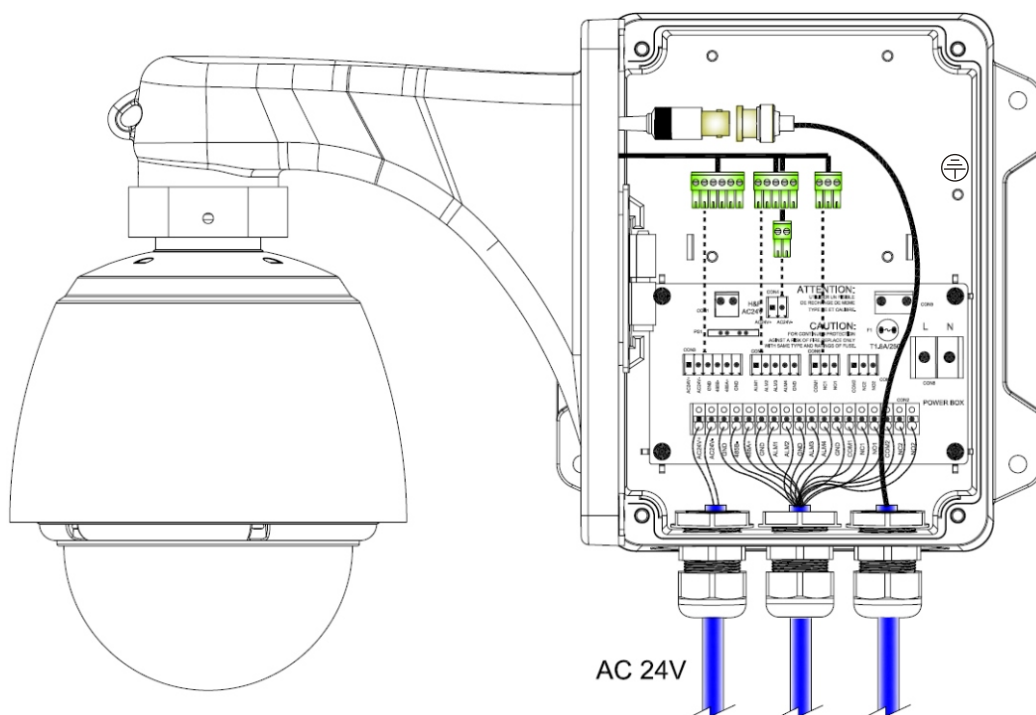
Note : Place the BNC connector at the safe position not to make a short circuit.

■ INSTALLATION FOR 24VAC TYPE MODEL

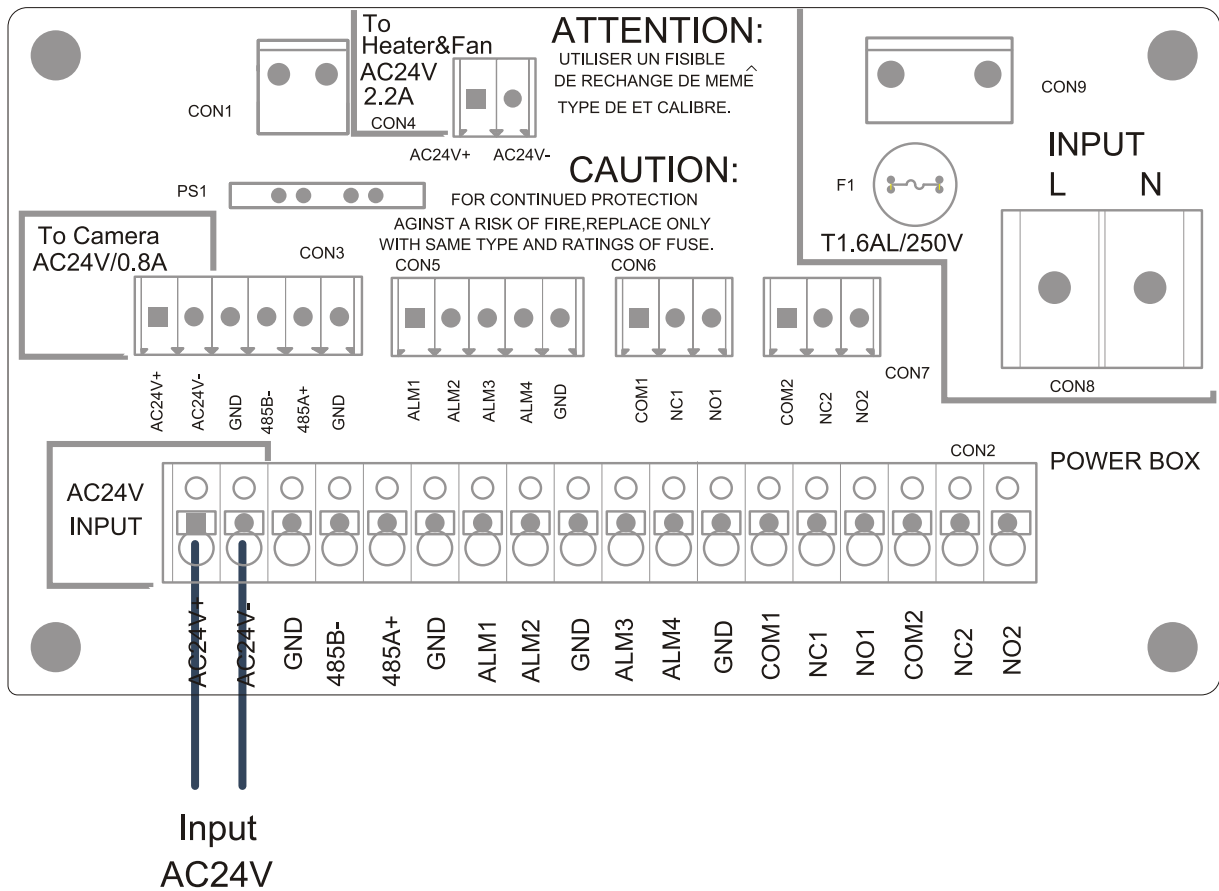
1) General Dome Camera



2) All-In-One Dome Camera



3) CONNECTION



CON4 : for one Heater and one fan with AC24V

CON3, CON5, CON6, CON7 : to the dome camera.

CON2 : for external connection

CON8 : No USE

CAUTION : Power input cable uses suitable product to National Requirement by outdoor
: Minimum conductor size : 0.75mm^2 , 18AWG

Note : To make connections on the Connector Strip, press and hold the button and insert the wire in the hole below the button. After releasing the button, tug gently on the wire to make certain it is connected. To disconnect a wire, press and hold the button above the wire and pull out the wire.

Note : Place the BNC connector at the safe position not to make a short circuit.

EQUIPMENT SPECIFICATIONS

Operating Environment	Ambient temperature	-40° C - +50° C (-40° F - +122° F)
	Ambient humidity	10% - 90% (non-condensing)
	Weatherproof	IP66

120VAC TYPE MODEL / 230VAC TYPE MODEL

Connections	Input	120VAC / 230VAC +/- 10%
	Transformer Output	20VAC - 28VAC
	Power Input Connector	Screw - type barrier strips

Power supply	120VAC Input 0.6A / 230VAC Input 0.35A
--------------	--

Physical Characteristics	Dimensions (W x H x D)	8.47"x7.64"x10.63"(215mm x 194mm x 270mm)
	Net Weight	8.37lbs. (3.8Kg)
	Construction	Aluminum, Steel

24VAC TYPE MODEL

Connections	Input	24VAC
	Output	by pass through the polyswitch
	Power Input Connector	Push terminal block

Power supply	Needs the external 24VAC Input over 3.0 Amp Current
--------------	---

Physical Characteristics	Dimensions (W x H x D)	8.47"x7.64"x10.63"(215mm x 194mm x 270mm)
	Net Weight	5.3lbs. (2.4Kg)
	Construction	Aluminum, Steel

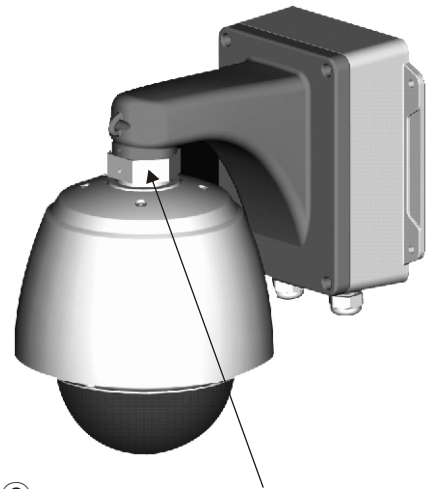
■ INSTALLATION

Refer to the Exploded Assembly Diagram, the Parts List, and the Accessories below.

CAUTION : Refer all servicing to qualified service personnel.

1. Drill 4 holes on the wall to fix the Mounting Base.

CAUTION : • For safety, the structure wall that this unit is installed on should be strong enough to support a minimum of 25kg(55.1 lbs).
• For safety, connect a Ass'y Dome Housing under 9kg(19.8 lbs) to the nut^⑬.



• Seal this using the Teflon tape around a thread of a socket.

2. Insert the Plastic Anchors inside each hole.

3. Attach the Mounting Base by using the screws (PTS1 M6) and the Plastic Anchors on the wall.

4. Fix the BNC Cable with the Cable Clamp within the Mounting^②.

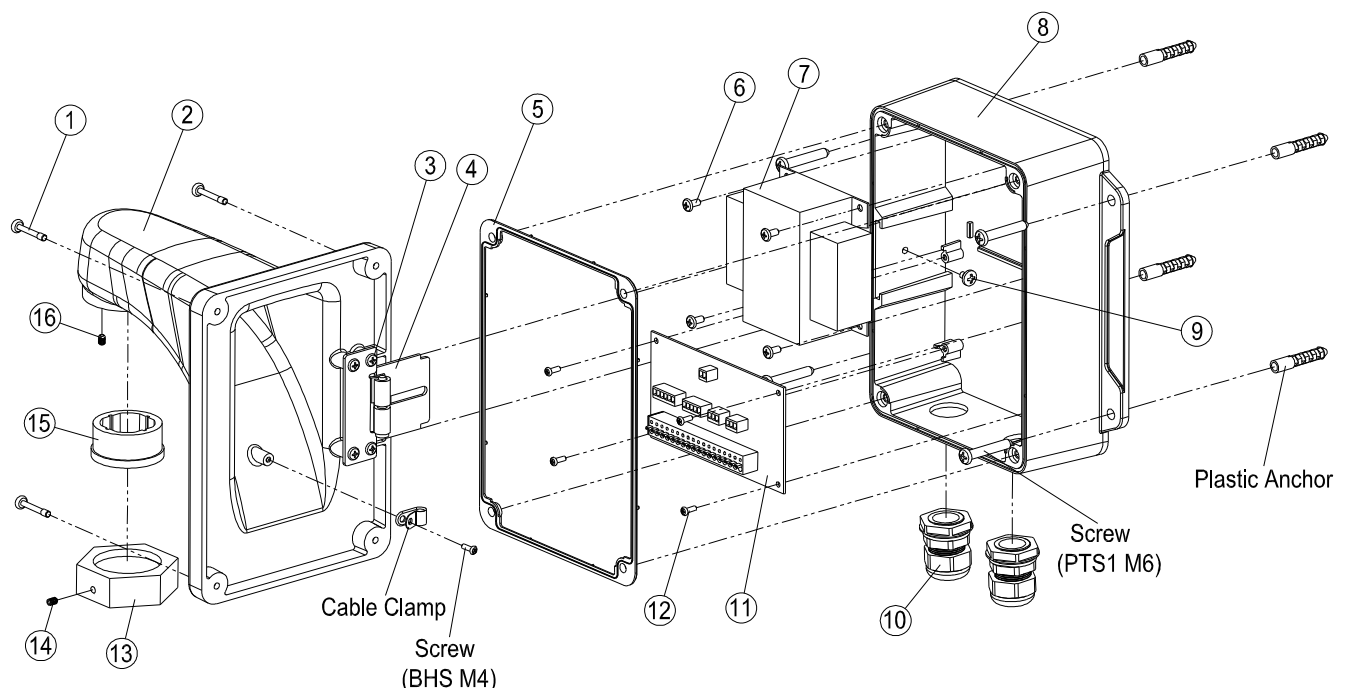
5. Close the Mounting and tighten the screws^①.

NOTE : You can prevent moisture from generating inside as sealing gaps between PGs and cables completely.

6. After assembling the Housing to the Socket^⑮, tighten the Knocking screw^⑭ by 4mm L-Wrench.

NOTE : • If necessary, install the PG Gland additionally at the Mounting Base after removing the Conduit Hole(refer to the figure of Dimension) from the Mounting Base.
• The range of the operating temperature of this unit is -40°C ~ +50°C (-40°F ~ +122°F). Therefore, don't expose this unit directly to the sun and install it at a well ventilated place so that the inside temperature may not increase more.

■ EXPLODED ASSEMBLY DIAGRAM



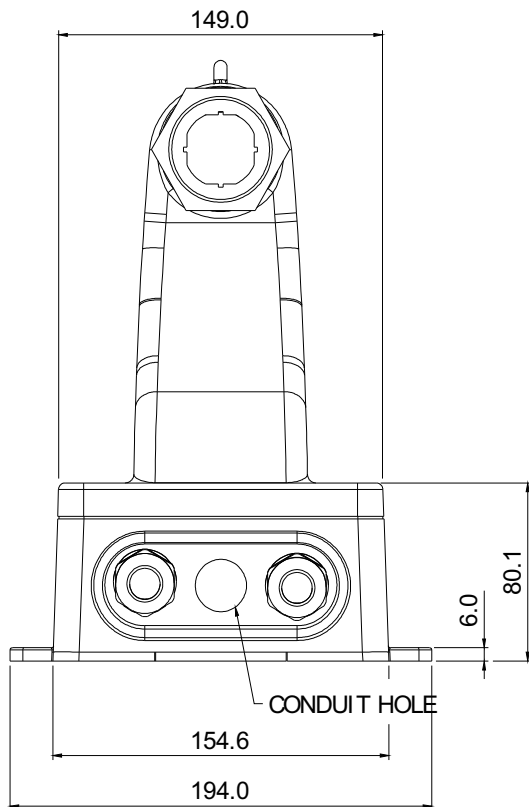
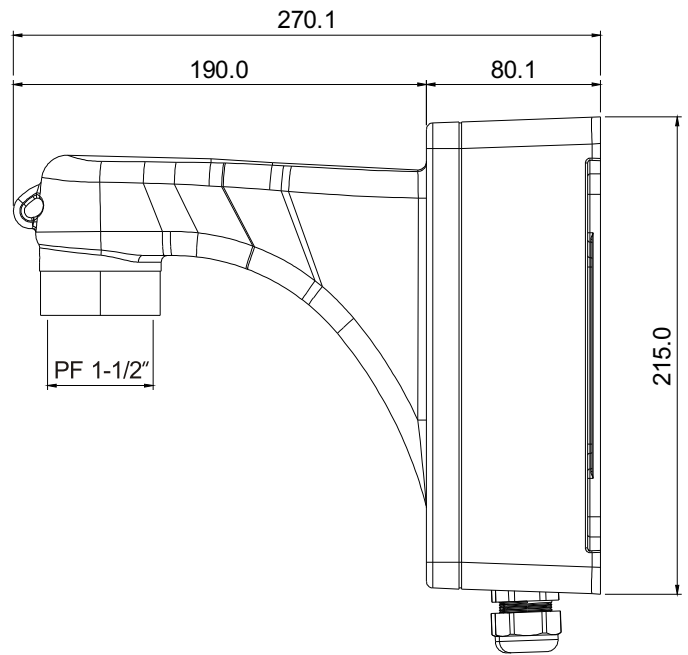
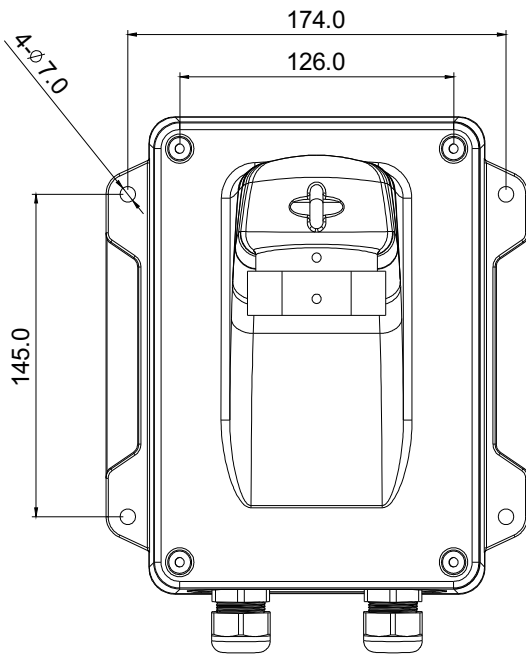
PARTS LIST

No.	PART NAME	DESCRIPTION	QTY
1	Screw	T20 M5, L=15	4
2	Mounting	AL	1
3	Screw	BHS M4, L=8	4
4	Hinge Ass'y	SUS (t=2.0)	1
5	Gasket Rubber	Silicone	1
6	Screw	BHS M4, L=6	4
7	Power Trans	AC120V / AC230V	1
8	Mounting Base	AL	1
9	Hinge Screw	PH M4, L=4	1
10	PG Gland	16.0	2
11	PCB Ass'y		1
12	Screw	PHS M3, L=8	4
13	Nut	NF 1.5", AL	1
14	Set Screw	M4	1
15	Socket	AL	1
16	Set Screw	M4	1

ACCESSORIES

No.	PART NAME	DESCRIPTION	QTY
1	Plastic Anchor	M6	4
2	Screw	PTS1 M6, L=35	4
3	Screw	BHS M4, L=8	2
4	Cable Clamp	DA-4N , Nylon	1
5	PG Gland	DAPG-16.0	1
6	L-Wrench	4mm	1
7	L-Torx Wrench	T20, 5mm type	1
8	Washer (Star)	M4	1

DIMENSION(mm)



POWER BOX

PRINTED IN KOREA

50302158B