
NewVission

Interactive Whiteboard

E-78/ E-88



User Guide

Contents

Accessories List	4
1. Introduction.....	4
1.1 Infrared technology principle.....	4
1.2 Technical Specifications:.....	6
1.3 Working Environment.....	6
1.4 Minimum Computer System configuration.....	6
1.5 System configuration recommended.....	6
1.6 Software supported operation system.....	6
1.7 Hardware supported operation system.....	6
2. How to install the infrared interactive whiteboard?.....	6
2.1 Mobile stand installation.....	6
2.2 Wall mounting Installation.....	12
2.3 How to install the infrared IWB software?.....	14
3. How to use the infrared interactive whiteboard?.....	17
3.1 Connect the whiteboard with the computer.....	17
3.2 Calibrate the Infrared Interactive Whiteboard.....	17
3.3 Hotkeys.....	18
3.4 Introduction of the software tools.....	19
3.4.1 Basic attributes of the software.....	19
3.4.2 Toolbar.....	20
3.4.3 How to show, hide or move the toolbar?.....	22
3.4.4 Drop-down Menus.....	22
3.4.5 How to write on the board?.....	24
3.4.6 How to erase on the board?.....	24
3.4.7 How to use the Resource in the software and computer?.....	24
3.4.8 How to use Hyperlink?.....	25
3.4.9 How to use Background Image and Resource?.....	26
3.4.10 How to creat a new file?.....	26
3.4.11 How to save file?.....	27
3.4.12 How to open file?.....	27
3.4.13 How to insert Text?.....	27
3.4.14 How to combine object?.....	28
3.4.15 How to lock object?.....	29
3.4.16 How to use Recorder?.....	29
3.4.17 How to make Screenshot?.....	29

3.4.18 How to use Smart Pen?.....	30
3.4.19 How to use Spotlight?.....	30
3.4.20 How to use Curtain?.....	31
3.4.21 How to use Arrow?.....	32
3.4.22 How to use Annotation?.....	32
3.4.23 How to play the video files?.....	33
3.4.24 How to switch layer of pictures?.....	34
3.4.25 How to use Rebroadcast?.....	34
3.4.26 Subjects-Math.....	34
3.4.27 Application of the special tools.....	35
3.4.27.1 Dice.....	35
3.4.27.2 Calculator.....	35
3.4.27.3 Magnifier.....	35
3.4.27.4 Clock.....	36
3.4.28 Measure tools.....	36
3.4.28.1 Protractor.....	36
3.4.28.2 Triangle.....	37
3.4.28.3 Ruler.....	37
3.4.28.4 Compass.....	37
4. FAQ.....	38

Disclaimer

Please read this User manual carefully before using the product. We suggest that you keep this manual carefully for future reference.

Copyright Notice

We maintain the right to revise its content without giving notification, please kindly understand. No copying or spreading of its contents is allowed unless gives written permission formerly.

Shall any discrepancies caused by the descriptions of this user manual and the actual product or its operation, the actual product and operation should be referred as the correct ones.

Notice:

This user manual is applicable to all infrared interactive whiteboard series.

Some symbols are used in this manual to ensure the safe and correct use of this product. All the meanings are explained as below:



Remarks:

This symbol means that there is further explanation of the software.



Attention:

This symbol indicates that there are ways to avoid incorrect operations of the product.



Warning:

This symbol indicates that if ignored or applied incorrectly, it would have the possibility of damaging the product or results in abnormality!



Warning:

To avoid electric shock, please avoid installing the interactive whiteboard in places of heavy humidity or mist!

When using the product, please prevent it from fire source and electric shock as well as long time exposure under the sunshine!



Warning:

Please do not stare straightly to the light beams from the projector!



Important Attention:

Please connect the computer and the projector with the earth to avoid accidental damages. Please connect the interactive whiteboard and computer through the USB cable or wireless module correctly to ensure normal power supply.



Attention:

If the IWB mounted on the wall, it must be straight with the wall.

Do not use sharp or sturdy stuff to cut or carve the board surface or frame.

Accessories List:

Please open the packing carefully. Each package shall contains the following items if you have selected our RE series.

USB cable (6M): 1 PC

Intelligent pen: 4 PCS

Pointer: 1 PC

Wall mount bracket: 4 PCS

Software CD: 1 PC

Expansion bolt: 8PCS

Small screw (optional): 4PCS

Wheel (optional): 4PCS

Inner hexagon screw (optional): 12PCS

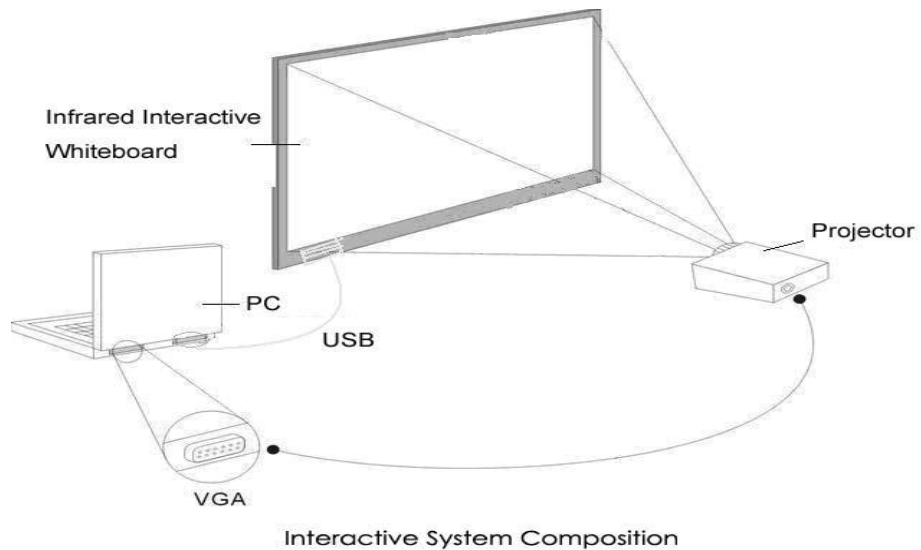
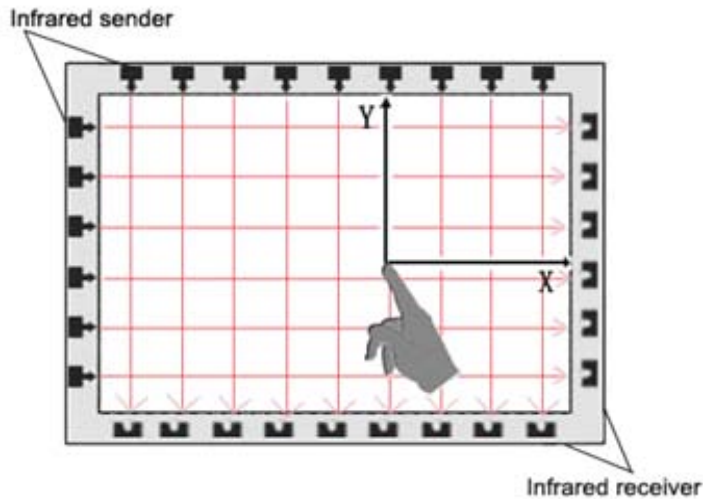
Shall any of the above mentioned parts is missing or damaged, please contact our local distributor.

1. Introduction

Thank you for selecting our infrared interactive whiteboard and software!

1.1 Infrared technology principle

A plane scanning surface is formed by the infrared receiver and transmitters on x-axes and y-axes located inside the frame. When an object enters the scanning surface and stops the scanning on that point, the point's coordinate(x, y) is found by sensing the blocked infrared beams from horizontal and vertical directions.



1.2 Technical Specifications:

Induction Type : Infrared

Writing Method : Pen or finger

Available Touch Extent (E-78): 1850mm (4:3)
(E-88): 2270mm(16:9)

Resolution : (8000 X 8000)

Operating System : Microsoft Windows, Mac & Linux.

Net Measurement (E-78): 4:3, 1655 * 1240 * 30mm (L * H * W)
(E-88) :16:9, 2145* 1240 * 30mm (L * H * W)

Computer Interface : USB & RF Adaptor

Power Supply: No external power supply needed

Annotation Software Included

1.3 Working Environment

Working Temperature: -5 to 60°C

Working Humidity: 30-95%

Storage Temperature: -40 to 45°C

Storage Humidity: 20-93%

1.4 Minimum Computer System configuration:

- PC with 1GHz x 86 processor
- 256M EMS memory or above
- Display card support 256 colors and above
- 10G applicable hard disk space
- Projection display resolution: 1280×800
- An available USB port
- Premium projector resolution: 1280×800

1.5 System configuration recommended:

- PC with 1GHz x86 processor
- 1G EMS memory or above
- Display card support 256 colors and above
- 10G applicable hard disk space
- Projection display resolution: 1280×800
- An available USB port

Premium projector resolution: 1280×800

1.6 Software supported operation system

- Windows 98, VISTA, 2000, XP, WINDOWS7, LINUX & MAC.

1.7 Hardware supported operation system

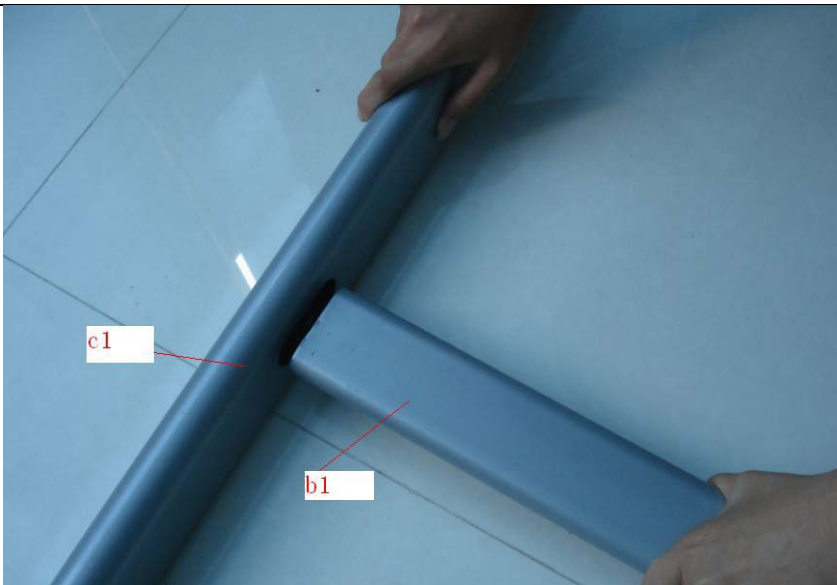
- Windows 98, VISTA, 2000, XP, WINDOWS7, LINUX & MAC.

2. How to install the infrared interactive whiteboard?

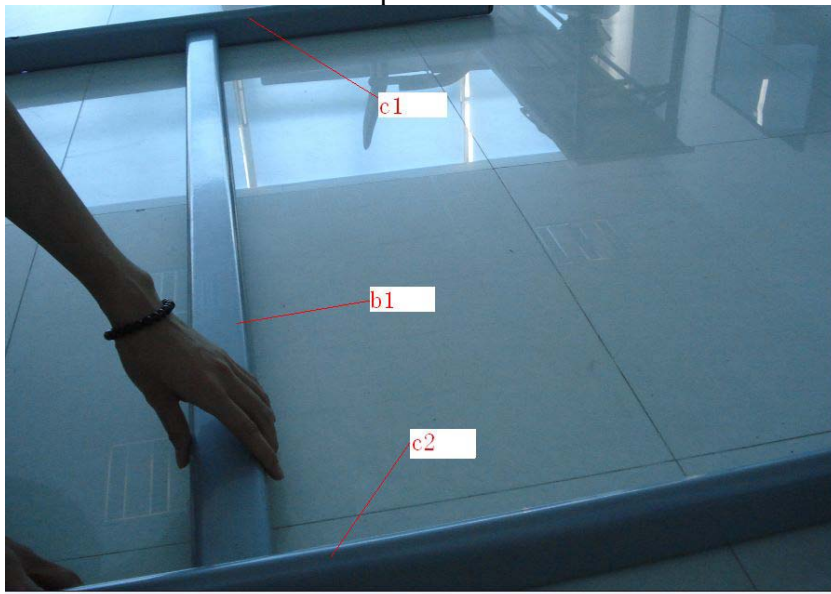
2.1 Mobile stand installation

It's quite easy for this installation. Only a wrench needed.

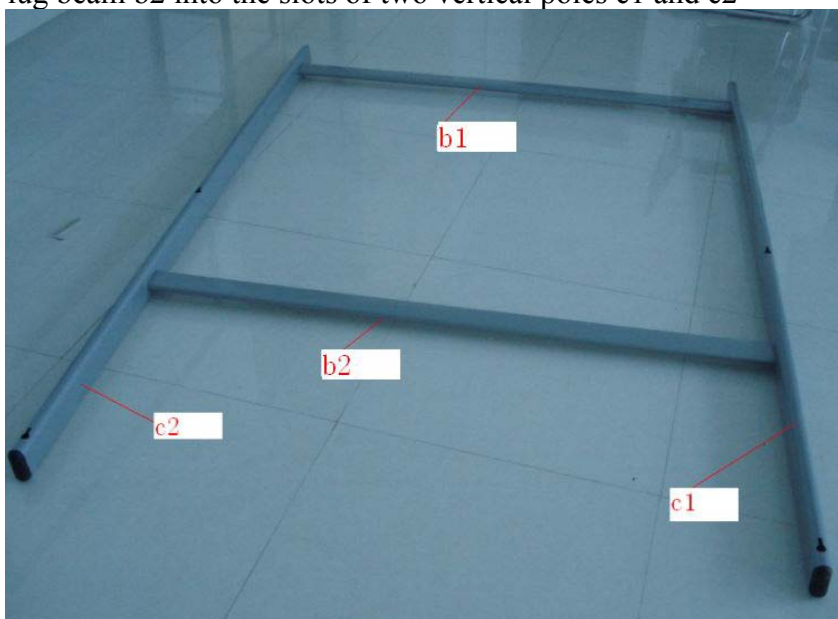
1. Connect the vertical pole c1 and beam b1



2. Connect beam b1 and vertical pole c2



3. Plug beam b2 into the slots of two vertical poles c1 and c2



4. Fix the stands with screws.



5. The stand is fixed.



6. Fix all the wheels on the base of stands with the wrench.



7. Plug the vertical poles c1 and c2 into the slots in the middle of bases.



8. Fix them all with screws.



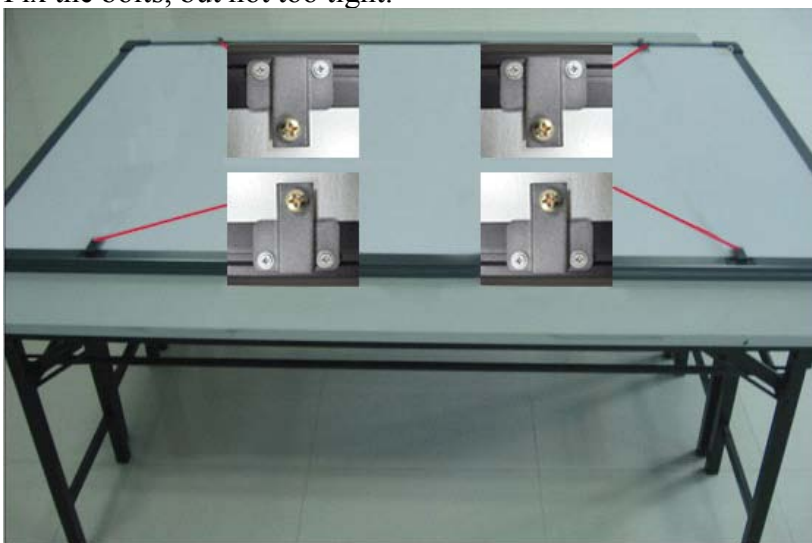
9. The mobile stand is finished.



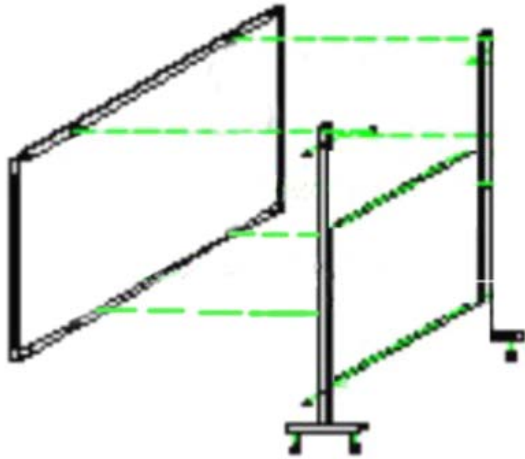
10. Put the back of the whiteboard on the desk.



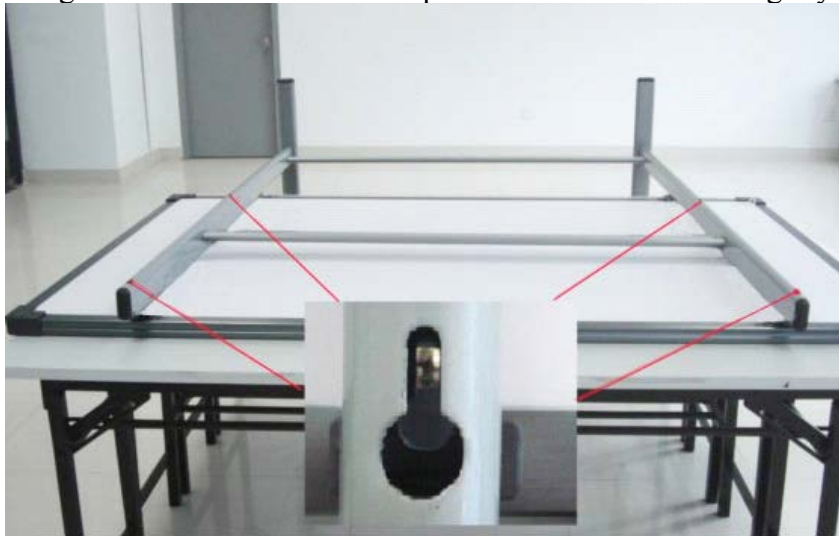
11. Fix the bolts, but not too tight.



Assembly diagram



12. Hang the board to the four bolts position and fix the bolts tightly.



13. The mobile installation is finished. Make it stand on the ground.



14. Lock the wheels of the stand base.

Unlocked state



Locked state



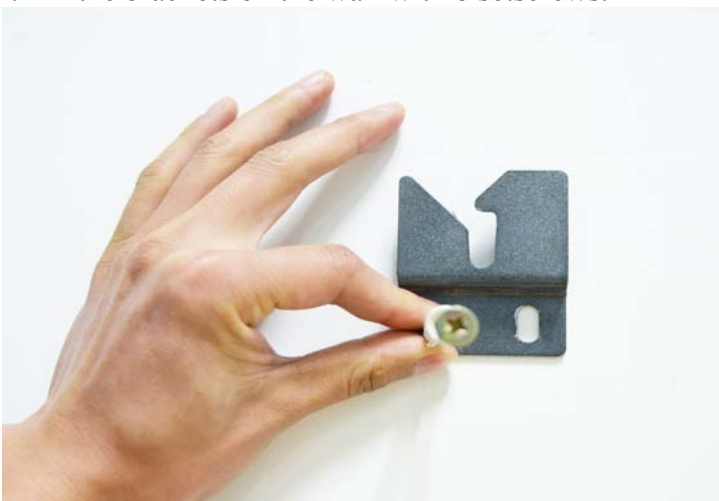
15. Put the pen on the pen holder.

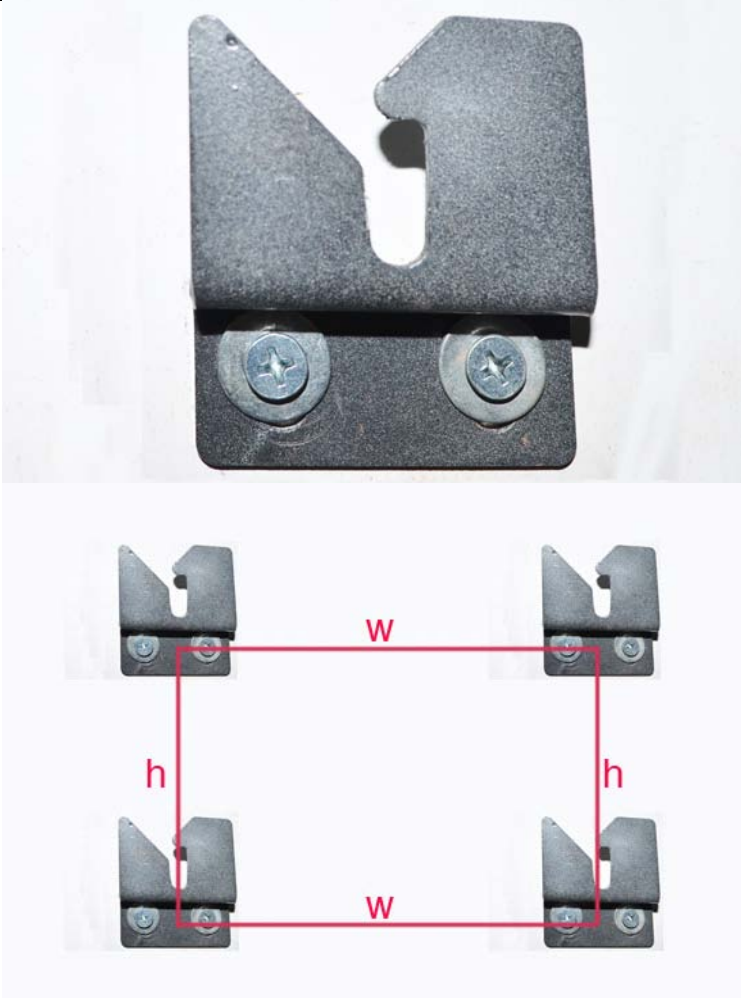


2.2 Wall mounting installation

You may need tape measure, wrench and drill for installation.

1. Choose the right place to install the board, which is convenient to connect the computer..
2. Mark the drill positions on the wall according to the different models of products.
3. Drill 8 fixing holes on the wall according to the mark.
4. Fix the brackets on the wall with 8 setscrews.





(Height and width are different according to different board sizes.)



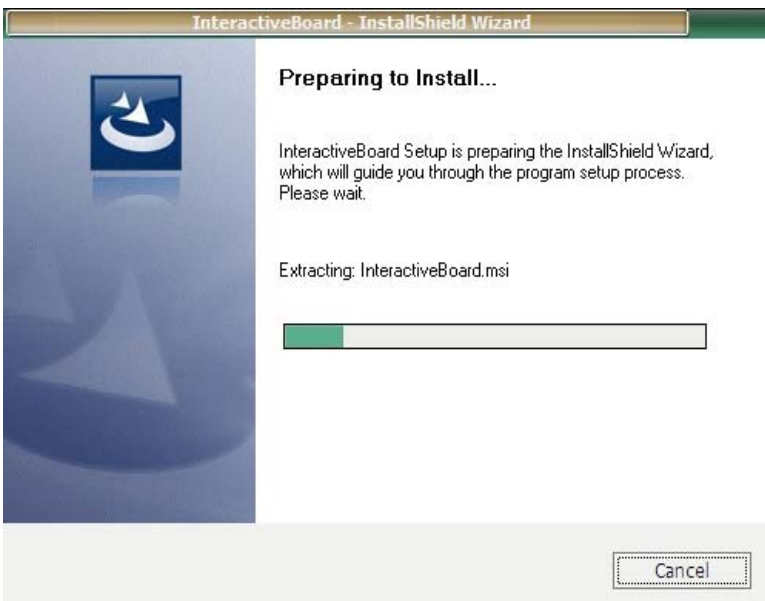
5. Hang the board on the four brackets. The wall mounting installation is finished.



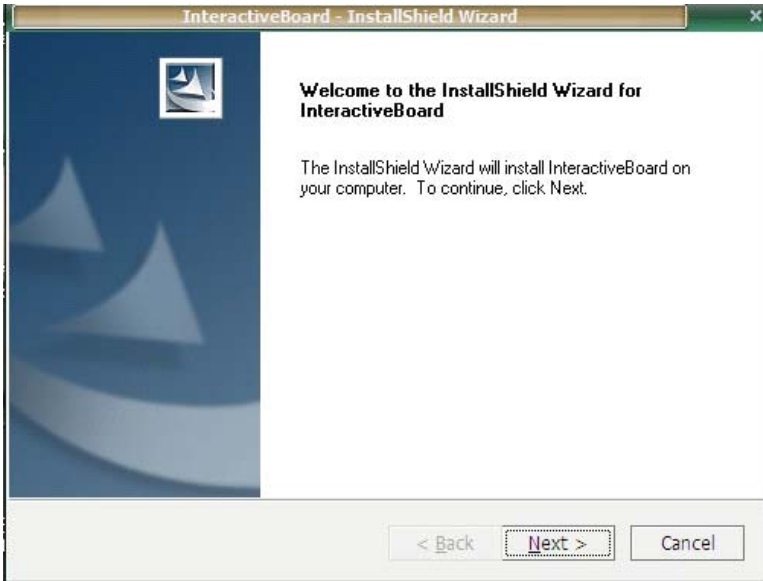
2.3 How to install the infrared IWB software?

Connect the computer and the whiteboard via USB cable, (the following installation example is the installation under WINDOWS XP, a slight difference maybe in other operation systems).

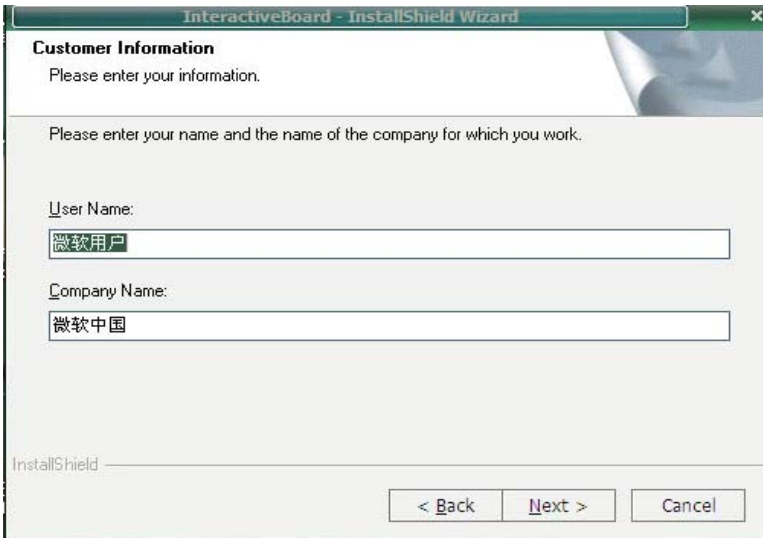
Insert the Software CD into your CD-ROM, then please click the Software Setup icon. Then choose the language you prefer and click “Yes” to install the software.



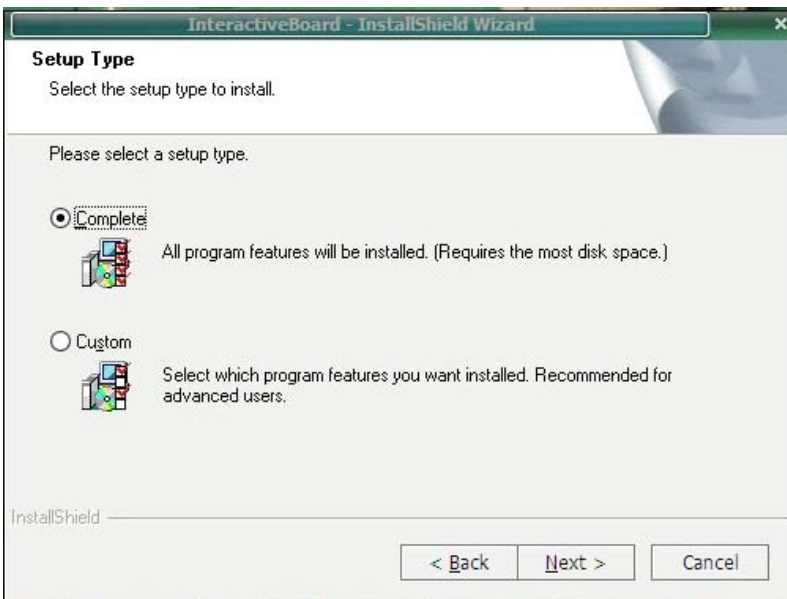
Click “next” to continue.



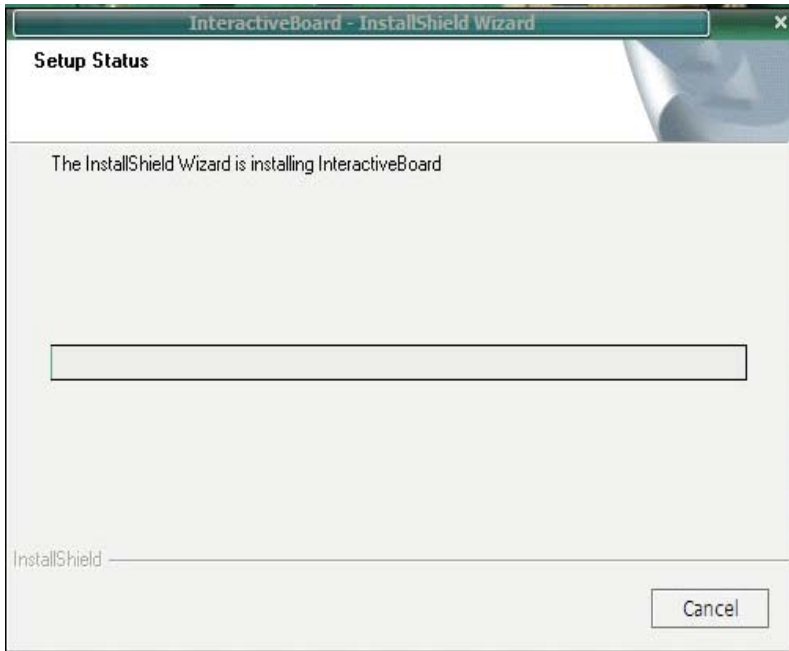
Click “next” to continue.



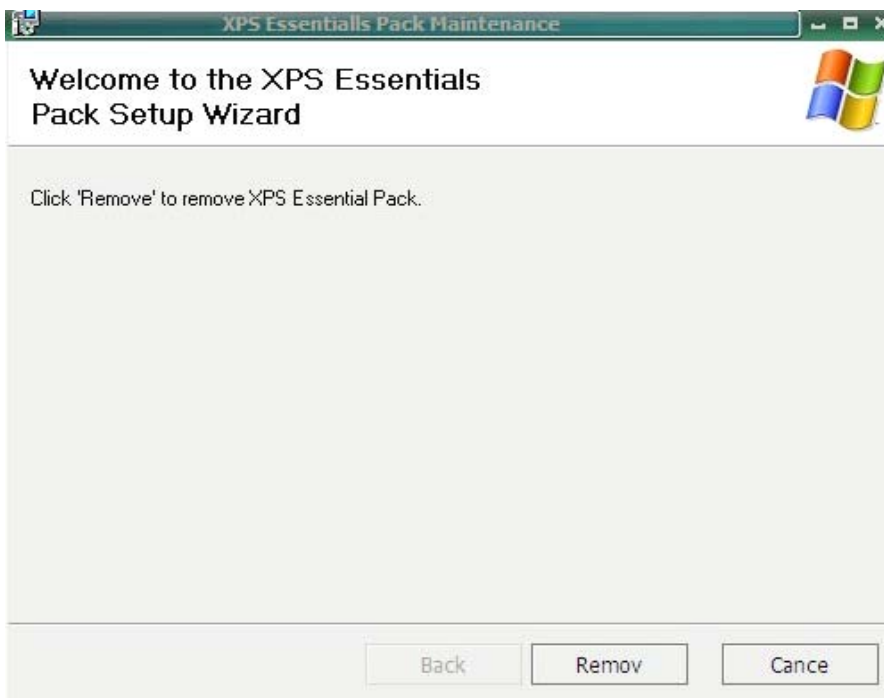
Click “next” to continue.



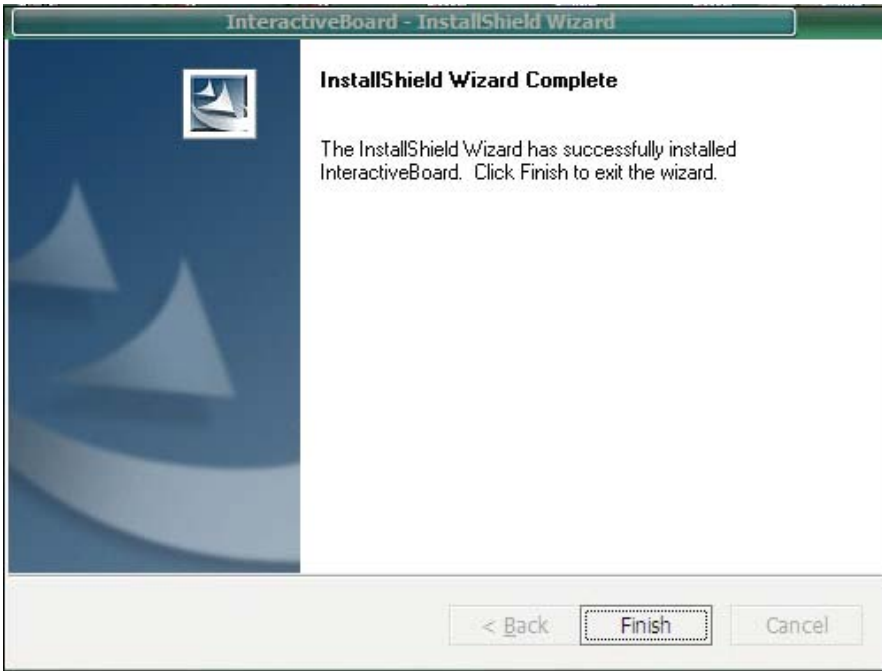
Click “next” to continue.



Choose “Remove” to continue.



Finally, your installation is finished.




If the driver installed properly, the USB indicators of the whiteboard will light in red. Then the IWB would be available after some simple setting. Just click the “Interactive whiteboard” icon on the desktop, which is our application software.

3. How to use the infrared interactive whiteboard?

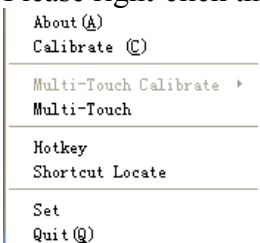
3.1 Connect the whiteboard with the computer

When you connect the IWB with computer through USB cable or wireless module, the computer could sense the IWB automatically if you have installed the software CD properly.

Then pls click “TouchDriver. exe”  icon on the desktop. The IWB’s connection status would be shown in your computer’s taskbar.

3.2 Calibrate the Infrared Interactive Whiteboard

Please right-click the “TouchDriver” icon  in the taskbar, then a menu like this would be shown

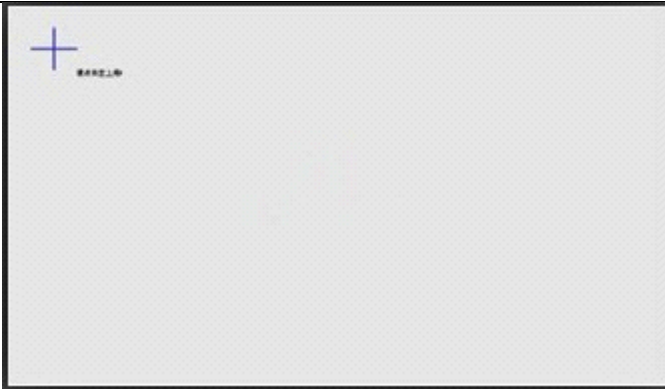



About

It shows the version information of this software.

Calibration

Click it and then you would see a screen as below.



Click the center point of the blue cross  by pen or finger to get the calibration more precisely.

Attention:

1. The calibration is necessary only at the first time when the whiteboard or other hardware is used.
2. Re-calibration is required only if the IWB or projector has been adjusted or relocated.

Exist

If you don't need to use the board, pls choose "exist".


Attention:

To confirm whether the board is connected successfully, there are two connecting status of the "TouchDriver" for your reference.



1.  means the connection is failed.



2.  means the connection is successful.

3.3 Hotkeys

We design 16 hotkeys on both sides of the board to make your operation much easier. Here is a brief description for your reference.

- 1) Mouse
- 2) New Page
- 3) Last Page
- 4) Next Page
- 5) Index Page
- 6) Resource
- 7) Black Pen
- 8) Red Pen
- 9) Fluorescent pen-blue
- 10) Fluorescent pen-green

- 11) Eraser(Default: Object Eraser)
- 12) Laser pen
- 13) Spotlight
- 14) Keyboard
- 15) Calibration
- 16) Custom

3.4 Introduction of the software tools

3.4.1 Basic attributes of the software

Functions in the main toolbar:

1. In the default toolbar: Start, Switch screen, Select, Hard pen, Eraser, Range, Undo, Redo, Advance (to show all the hided functions in the toolbar).



2. Hided functions: Page, Spread pen, Texture pen, Smart pen, Text, Line, Zoom in/out, Multi-write pen(optional), advance(this is to change the toolbar into default view)



Functions in the left side toolbar:

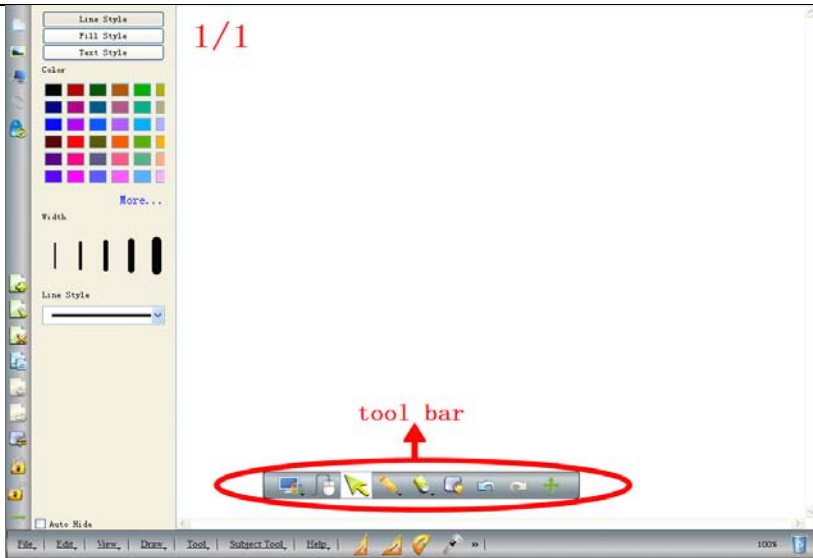
Index page, Resource; Computer file; Attachment(with hyper link); Property(setting of color); New page; Clear page; Delete page; Clone page; Previous page; Next page; Reset page; Lock or Unlock page); Side toolbar

Hand-Gesture Recognition: That includes palm starting the software, roam, multi-touch function like zoom in/out and rotate the picture.

Palm starting: Put your palm on the board for few seconds, the software will start automatically.







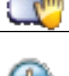


Range (Roam): Touch and drag on the board with two or three fingers at the same time to realize unlimited roam.

Zoom in/out: Select an object and use two fingers to move toward or outward vertically or horizontally to realize the zoom in or zoom out function.






3.4.2 Toolbar

It is convenient to operate on the board with the tools in the software toolbar.

Buttons	Functions	Buttons	Functions
	Creat document		Open document
	Save		Save as
	Export		Send Email
	Undo		Redo
	Previous page		Next page
	Select page		Copy
	Paste		Clone
	Delete		Select all
	Screen Range		Reset
	Zoom in		Zoom out
	Layer go top		Layer go bottom
	Layer go up		Layer go down
	Lock		Unlock
	Select locked object		Attributes

User Manual

	Screen curtain		Break page
	Screen highlight		Screen cover
	Screen arrow		Screen Grab
	Spotlight		Screen annotation
	Screen recorder		Magnifier
	Group		Ungroup
	Rebroadcast		Pause
	Dust bin		Hand writing recognition
	Select object		Hard pen
	Spread pen		Texture pen
	Fluorescence pen		Multi-write pen
	Smart pen		Laser pen
	Line segment		Form lines
	Office embed		Attachment
	Eraser		Plane Figure
	Solid Figure		Operate computer file
	Resource		Keyboard
	Dice		Calculator
	Clock		30°Right angled triangle
	45°Right angled triangle		Protractor
	Vernier Caliper		Compass

	Ruler		Cut
	Time Save		History

3.4.3 How to show, hide or move the toolbar?

In “View”, pls select whether to show or hide the toolbar by ticking on or ticking off. By dragging the blank area in both sides of the toolbar



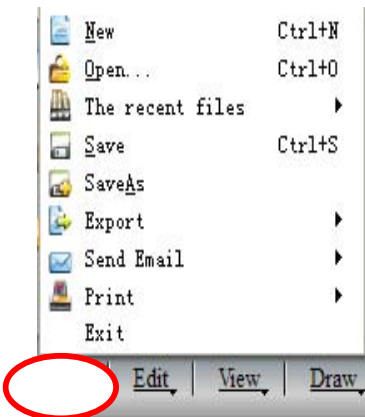
Remarks: Click the icon  to exchange the toolbar between the following two modes:



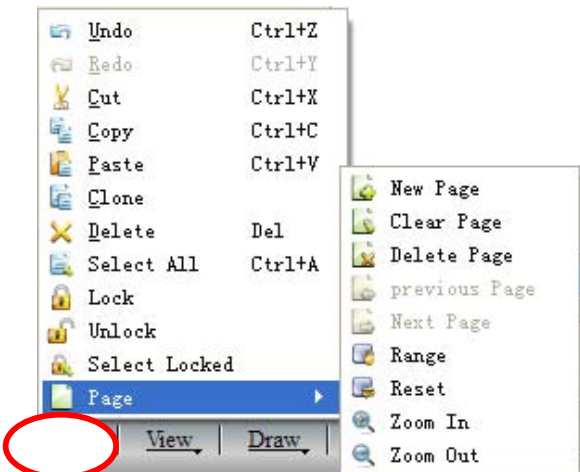
3.4.4 Drop-down Menus

There are lots of hidden submenus in the drop-down menu as showing below:

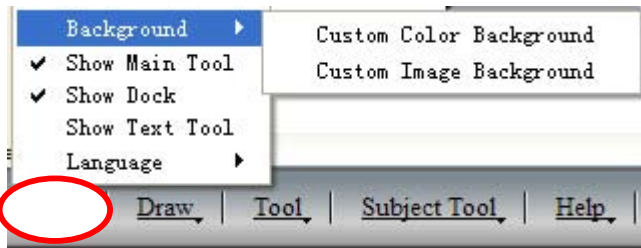
1. File



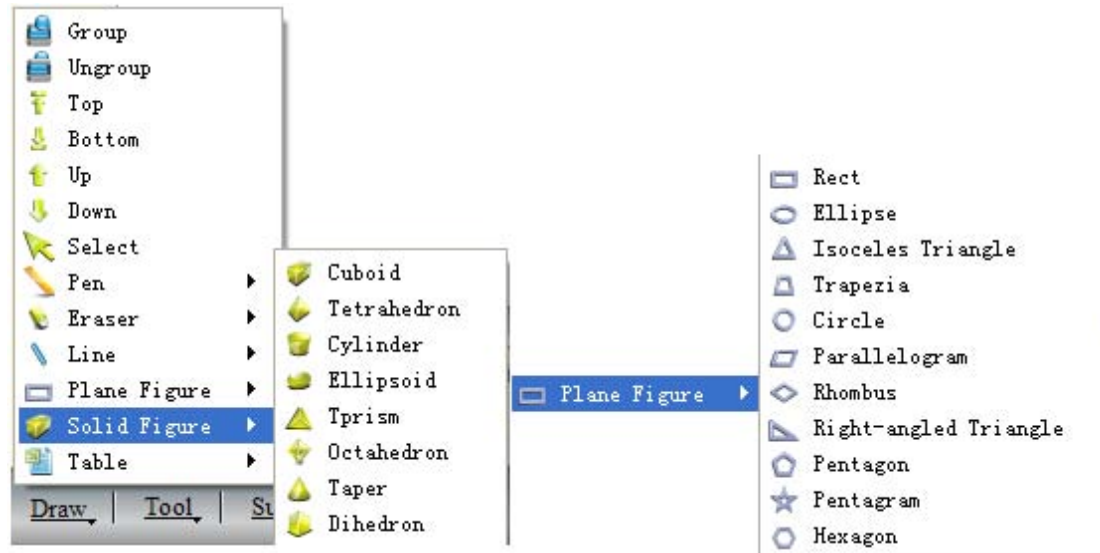
2. Edit



3. View



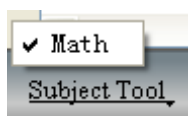
4. Draw



5. Tools



6. Subject Tools




7. Help



3.4.5 How to write on the board?

Directly select the pen with setting line color and width in the main tool bar.





Or on the left side bar, select the icon  for more setting.

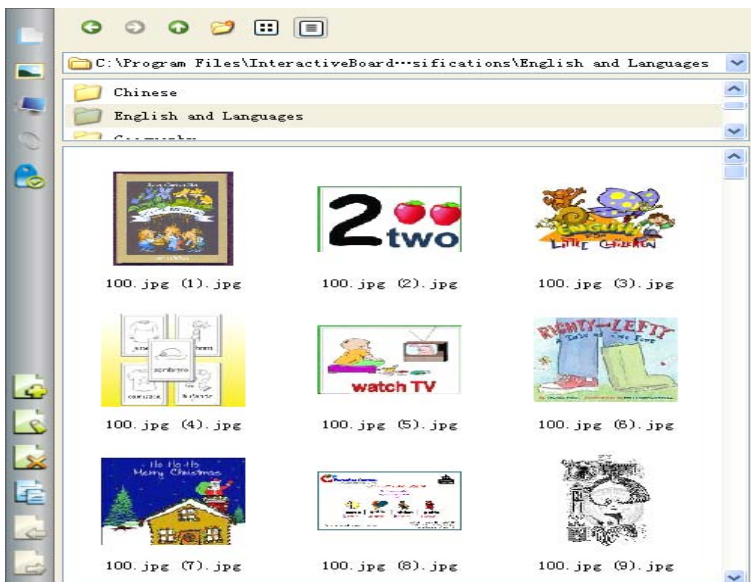
3.4.6 How to erase on the board?

Object eraser: Click the eraser icon in the toolbar and select the object eraser function, then select the object, the object will be erased.

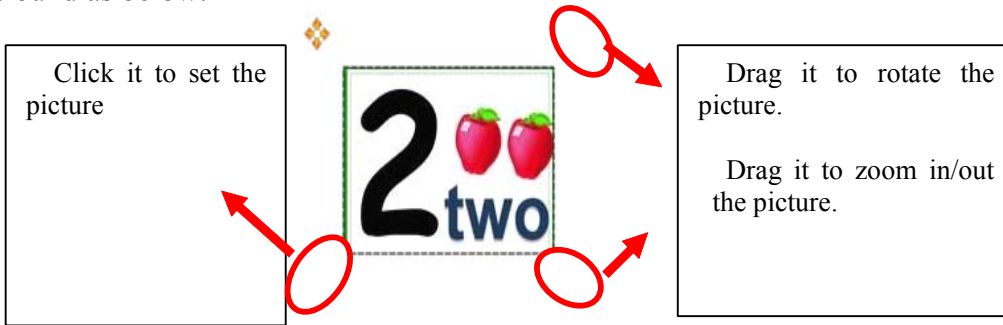
Point eraser: This function is the same as that in the traditional blackboard. You can select the point eraser icon to erase the content point by point.


3.4.7 How to use the Resource in the software and computer?

Click the button  or  in the left side bar, you can insert various images and files from the resource and computer, or you can save the outside resources into the gallery.



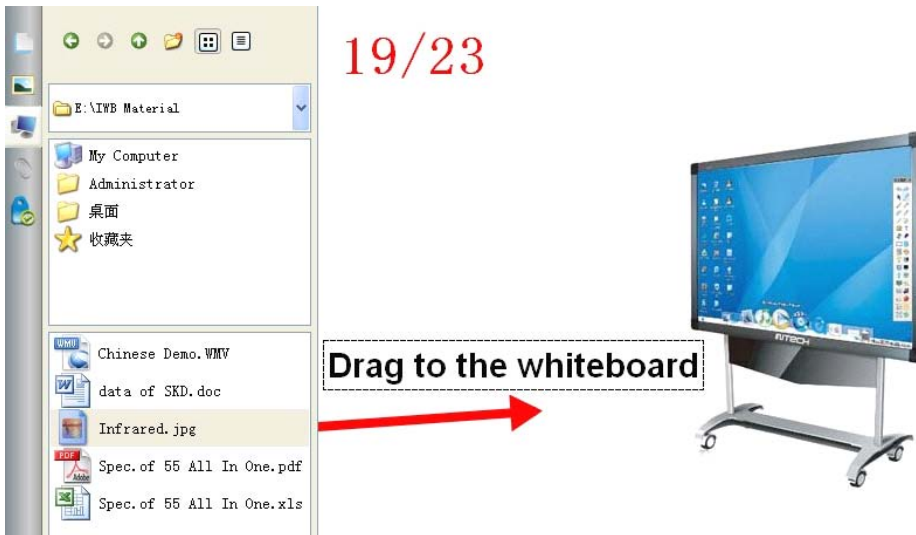
Drag the selected pictures to the whiteboard, and the picture will be shown in the board with four icons around as below:




Click the icon , it will show you the following window to operate the computer.

If you want to insert the pictures or files, just drag the files and pictures in the left browser to the whiteboard;

Other documents can also be dragged into the whiteboard.

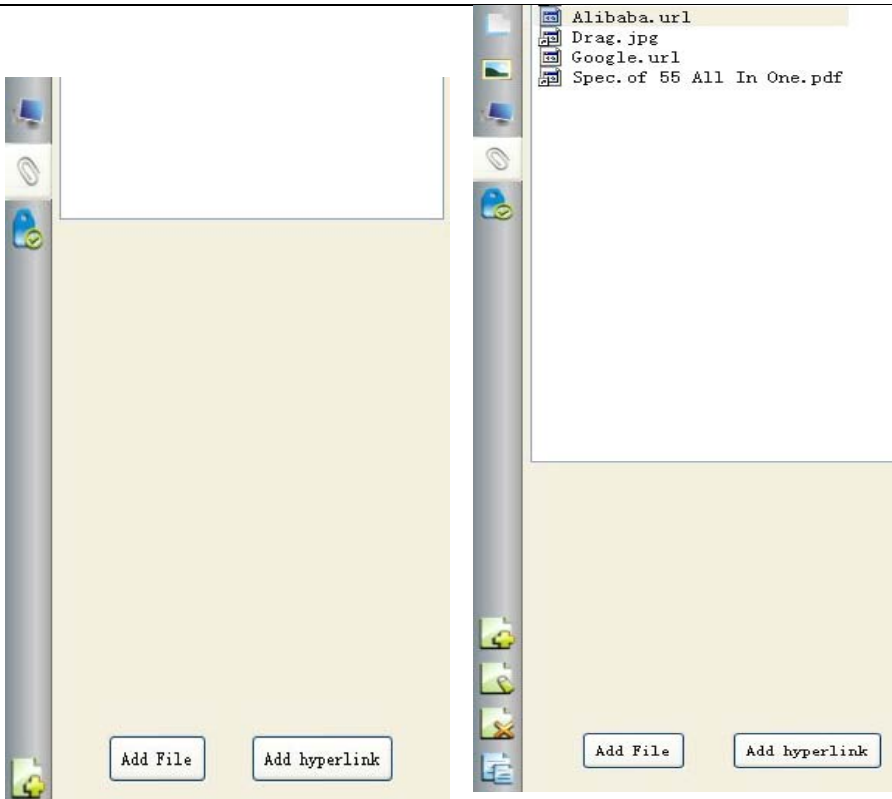


3.4.8 How to use Hyperlink?


To set a hyperlink in your current page, pls click the icon  at the left side bar.

Click “Add File” to add some files from the computer as backup;

Click “Add hyperlink” and set what to be linked to websites.



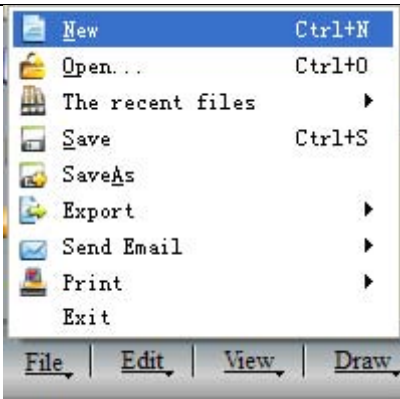
3.4.9 How to use Background Image and Resource?

To change the background image or color, pls choose the icon  in the main taskbar and select whatever you prefer.







3.4.10 How to create a new file?



In the current page, if you are going to create a file, pls click “File” and then choose “New”. A dialog will popup and ask if you want to save or don't save the current contents. After choosing, a new file will be created.



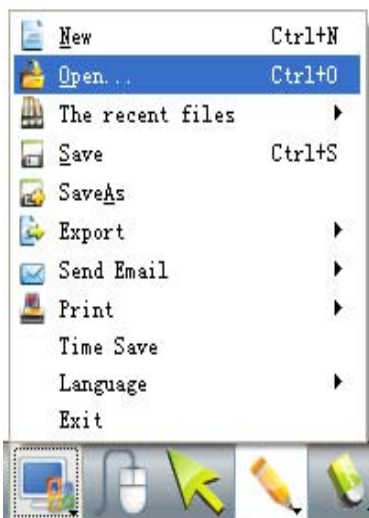
3.4.11 How to save file?

1. Click "File-Save" or the icon  in the main toolbar to select the submenu  Save to save contents in a special format INT which is available in our whiteboard software only
2. Click "File-Export", or the icon  in the main toolbar to select the submenu  Export to save files in formats of various Images(png, jpg, bmp, gif, pbm, pgm, ppt, ppm, xbm, xpm, tiff); PPT; PDF; and HTML. This function applies to the current page only.


3.4.12 How to open file?

Click "File-Open" or the icon  in the main toolbar to select the submenu  Open... , you can open the documents of INT, PDF, WORD, EXCEL and PPT. **Note that Excel should be in version 2007 or above.**

Remarks: Images can not be opened with this function but to drag. Pls refer to 3.4.7 the way to open the images.



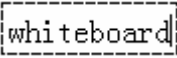

3.4.13 How to insert Text?

Pls find  icon in the main toolbar, a dialog as below will popup. You could input the contents by

keyboards.

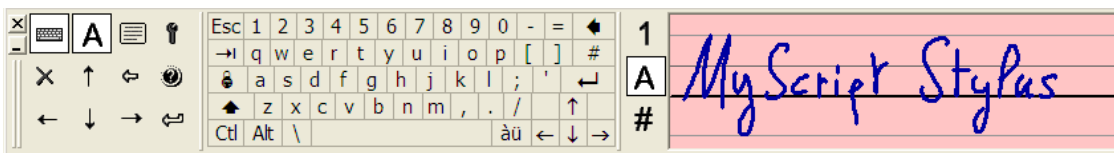


Text



Or, you could click the dotted area  and choose the icon , then input the contents by handwriting.

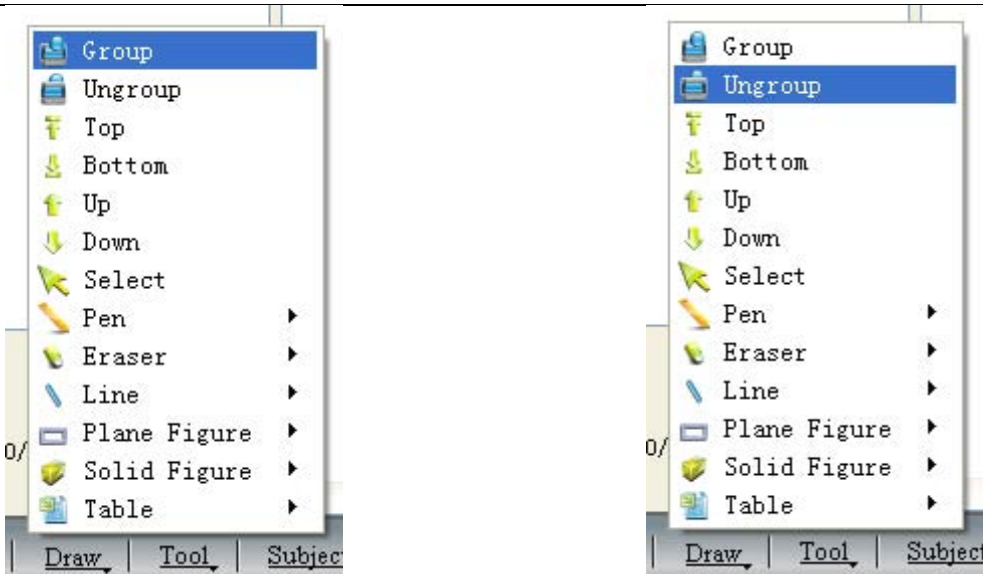


Enter into the handwriting after clicking the button
hand writing function





3.4.14 How to combine object?

You could select multi objects at the same time and choose the icon  **Group** in “Draw”, then all the objects would be combined in one group. To cancel this operation, pls choose the grouped object and click the icon  **Ungroup** in “Draw”



3.4.15 How to lock object?



If you don't want to move or change some contents in your lesson, you could lock it. Choose the icon  in "Edit". To unlock it, pls click  in "Edit".


Remarks: There are two same icons at the sidebar. They are used to control the whole page.


3.4.16 How to use Recorder?


In "Tool", pls select the icon , the screen recorder will popup.



Click  to start. While recording is on, you would see an icon like this  in the left upper corner.


Click  to stop the recording.

Click  to play the files which you recorded before.

Click again  to choose the file saving path.

3.4.17 How to make Screen Grab?



In “Tool”, choose the icon  Screen Grab, A dialog as below will popup. Pls drag the mouse to the area which you are going to capture.


To capture contents on the desktop and show them in the writing software, pls select “Export” and click “screen”. Then drag the mouse in the writing software. Besides, you could choose “Rectangular” or “Custom” shape to capture a special area instead of “screen” for the whole page.

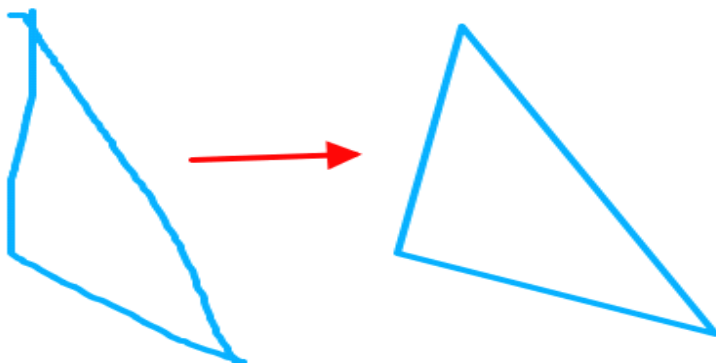
To capture contents in the writing software, pls select “Grab current page” and “Export”, then click “screen” and drag the mouse in the writing software. If you prefer to highlight part of the contents, you could choose “Rectangular” or “Custom” instead of “Screen”.

To capture the contents and save them as file format, you could select “Save” or “Export and Save” instead of “Export” only.


When you select “Export and Save”, you can save the captured contents and also export it to the writing software by dragging the mouse.

3.4.18 How to use Smart Pen?

In “Draw” or the main tool bar, you could find the icon . That is smart pen. It could recognize the random shape and change it to standard shape automatically.



3.4.19 How to use Spotlight?

Find the icon  **Spot light** in “Tool”, drag the mouse in the background area to highlight any contents at any places.

Put the mouse in the highlight shape frame and drag it to zoom in or zoom out the showing area.

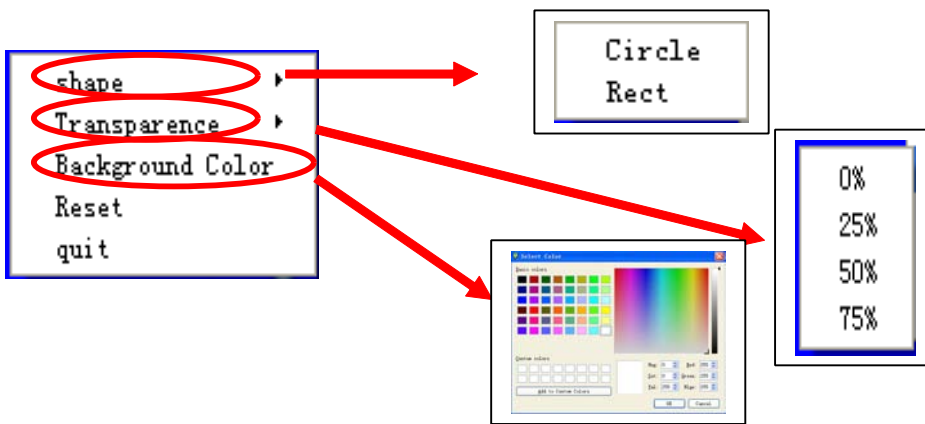
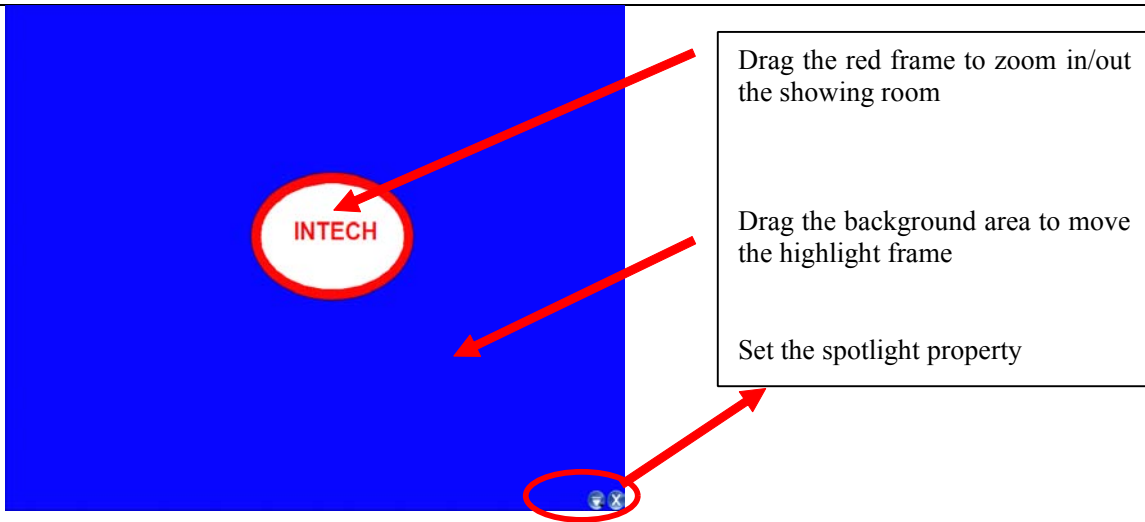
Hold your finger for few seconds on the board or right click in your computer or click the menu




on the bottom right to set the spotlight property.

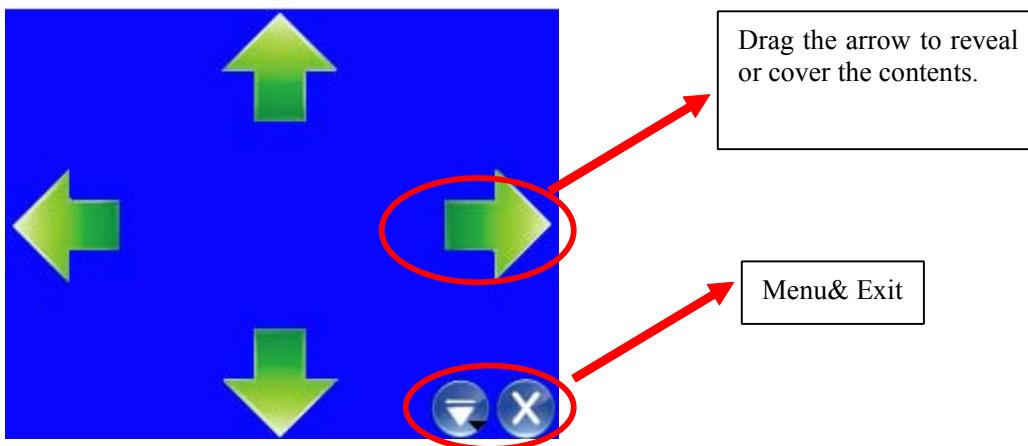


Click the icon in the right bottom to exit.

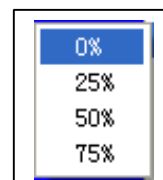


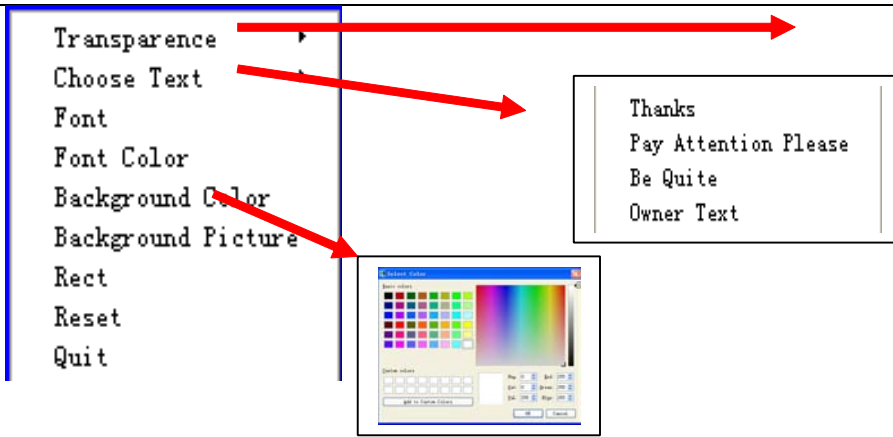
3.4.20 How to use Curtain?

Select the icon  in "Tool", and drag in the writing software, a curtain will appear to cover your current screen. To cover or reveal more contents, you could drag the four arrows at the four sides.




Hold your finger for two seconds on the board or right click in the computer or click the menu on the bottom right to set the curtain property.

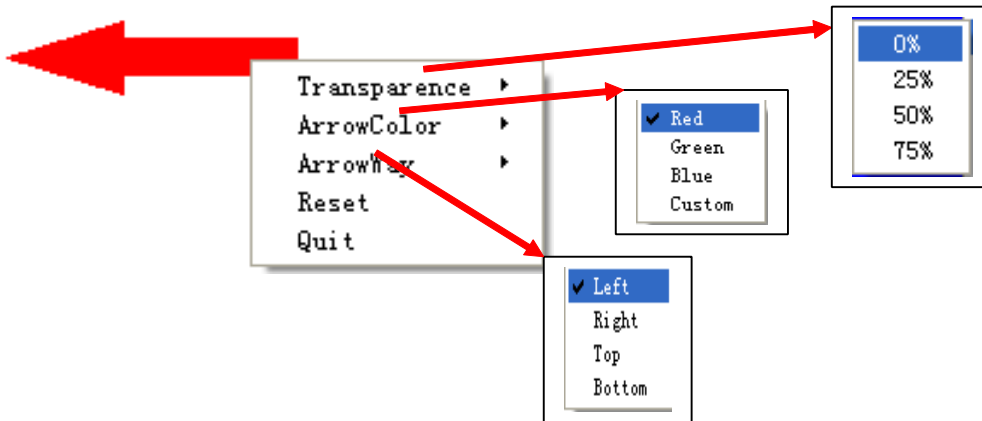








3.4.21 How to use Arrow?

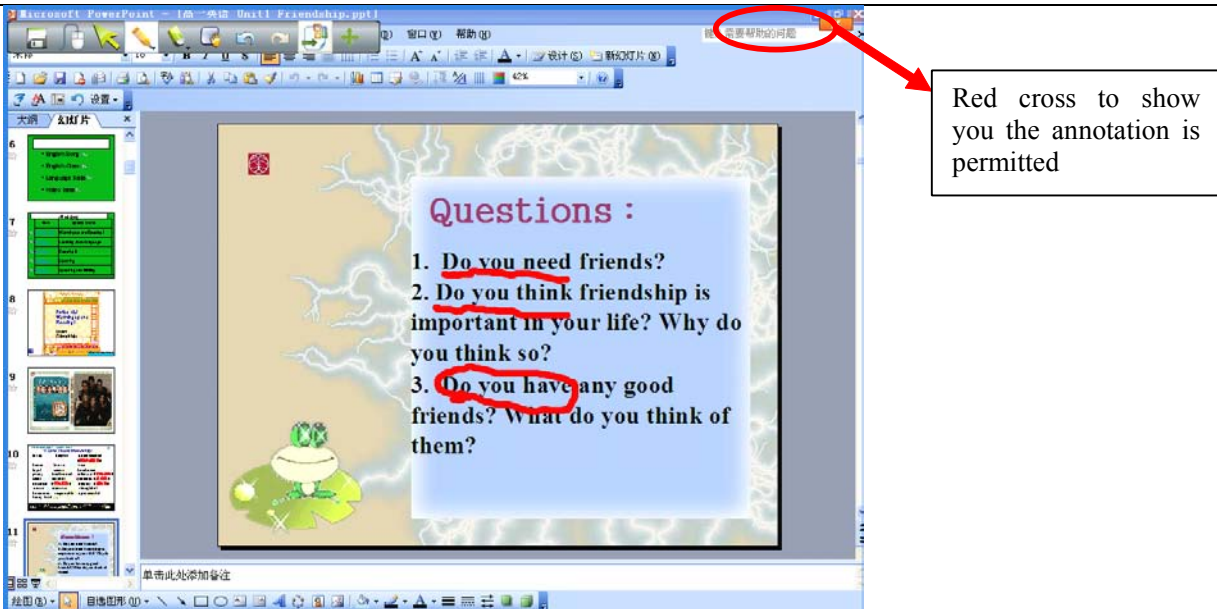
In “Tool”, find the icon . A red arrow would be shown in the screen. To change the direction, you could drag the top.

Hold your finger for few seconds on the board or right click in the computer, a menu will popup to set the property.





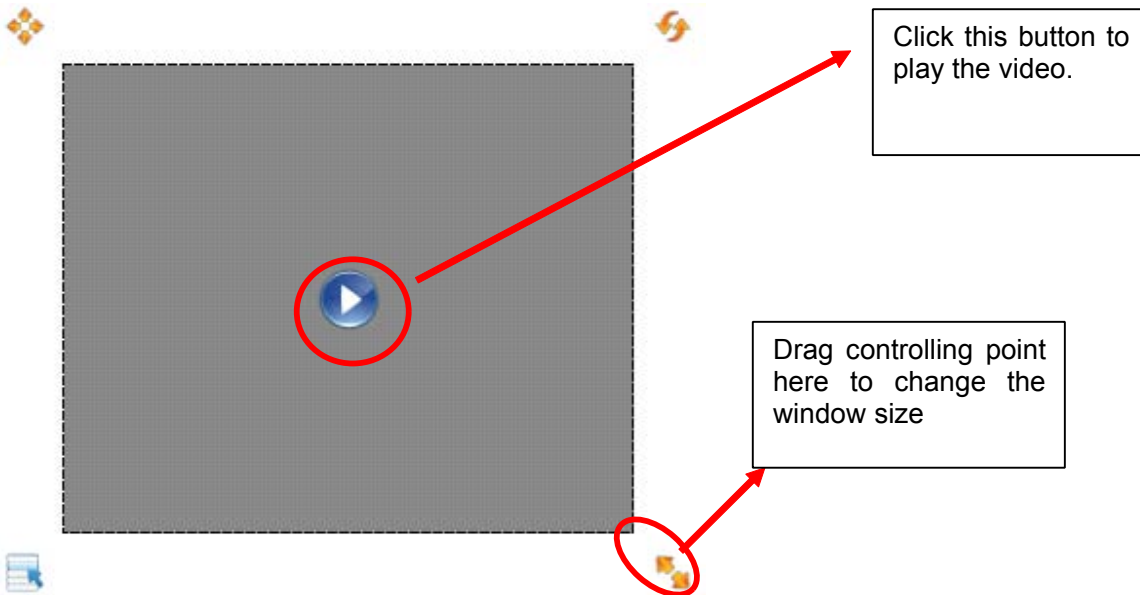
3.4.22 How to use Screen Postil?

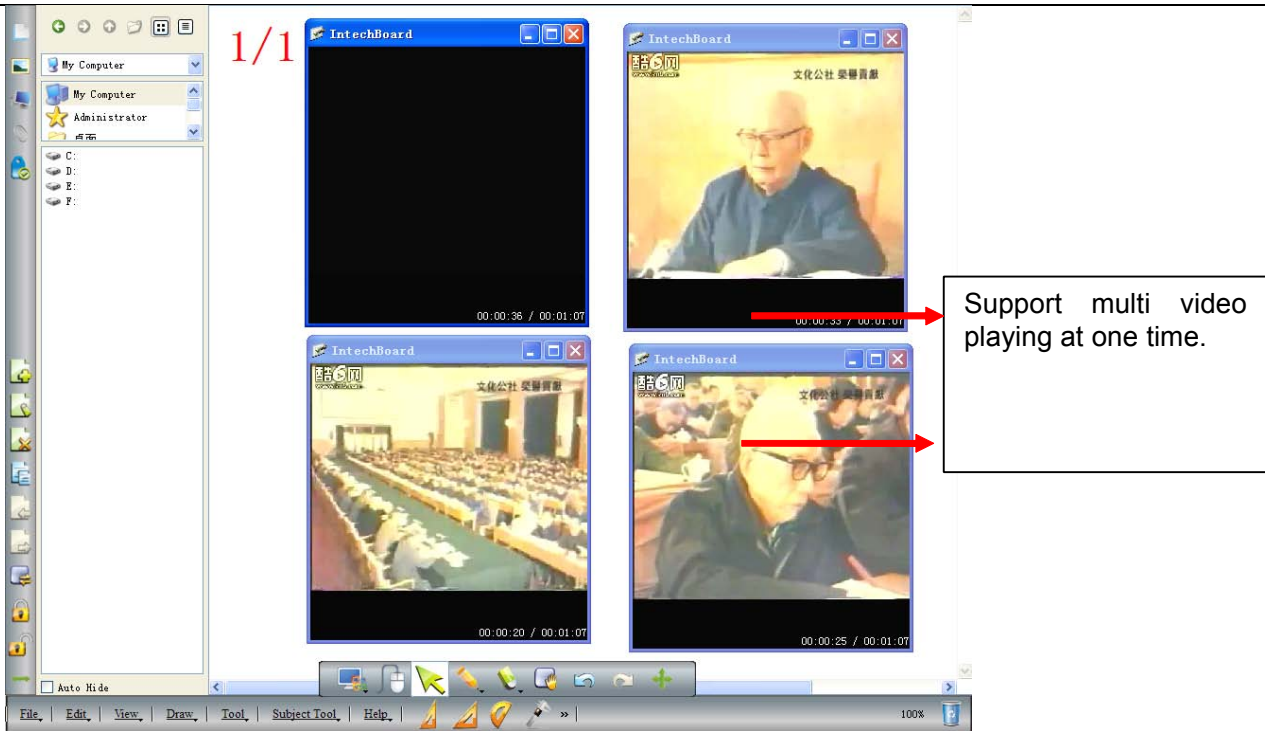
When you are going to make some remarks in Word, PowerPoint or Excel file, pls choose “Screen Postil” function in “Tool” or click  in the main tool bar. Select a hard pen in the icon , and a red cross  will appear on the top right. You can start inputting and after that, if you select office embed icon  in the main toolbar, your annotation would be saved in the file.



3.4.23 How to play the video files?

Click the icon  in the left side bar, select the video file and drag it to the whiteboard. You would see a player window as below. Just click the central icon  to start playing. Pls see the illustrated pictures in the following:





Notice: The software support multi video playing at different progress. You can adjust it freely. The size of the playing window can be changed by dragging the controlling point around the window. And also you can double click the window to realize the full screen playing.



3.4.24 How to switch layer of pictures?





This software can not only move the picture in the plane position, but also can switch layers as required.

Just Select the TOP icon , BOTTOM icon , UP icon  and DOWN icon  in "Draw" to realize it.

3.4.25 How to use Re-broadcast?



Click index page  in the left side bar, you will see the icons  in the left bottom. It is easy to realize the operations of REBROADCAST on the whiteboard:

-  Playback: Display the operating process backwards, from the beginning to the end.
-  Slow forward: Slow down the speed of display.
-  Fast Forward: Fast display.
-  Pause: Stop rebroadcasting and return to the interface of the last operation.


3.4.26 Subjects-Math

Function: Set square 30, set square 45, protractors, vernier caliper, ruler, compasses

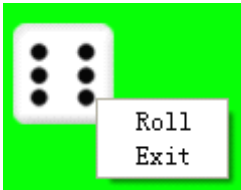
3.4.27 Application of the special tools

3.4.27.1 Dice



Click the icon  Dice in the menu “Tool” and it starts rolling, then double click it to stop rolling and select your random number.

To start again, pls hold your finers on the board for few seconds or right click in the computer to select ”roll”, or exit to end dice.

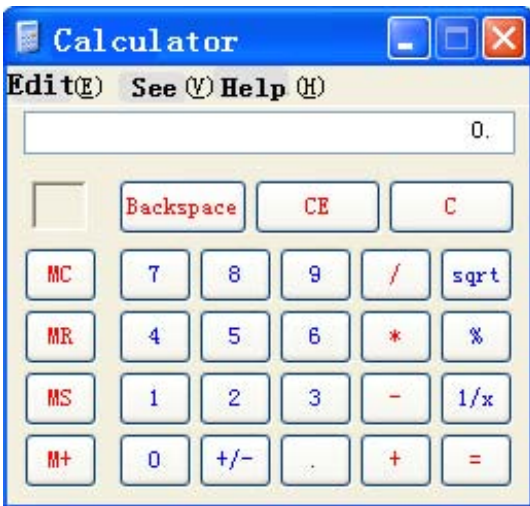


3.4.27.2 Calculator






Calc

Select calculator  in “Tool”. Click it with your fingers or mouse to calculate.



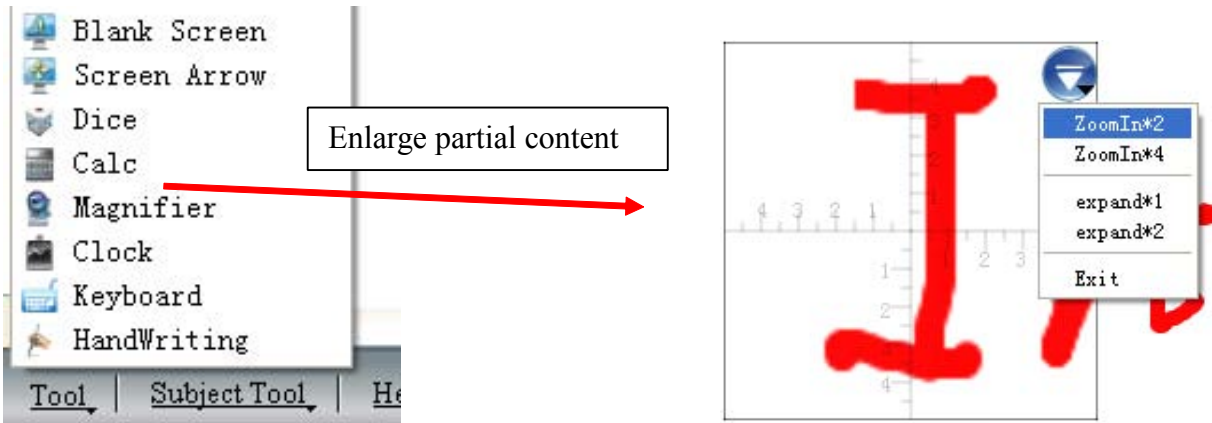
3.4.27.3 Magnifier



Click  or  in the expanded main toolbar to zoom in\out the whole page. To enlarge partial contents, click the icon  magnifier in the menu”Tool”to activate the magnifier function. Then, the area around the mouse would be enlarged in different multiples. The attributes can be set in the drop-down menu.



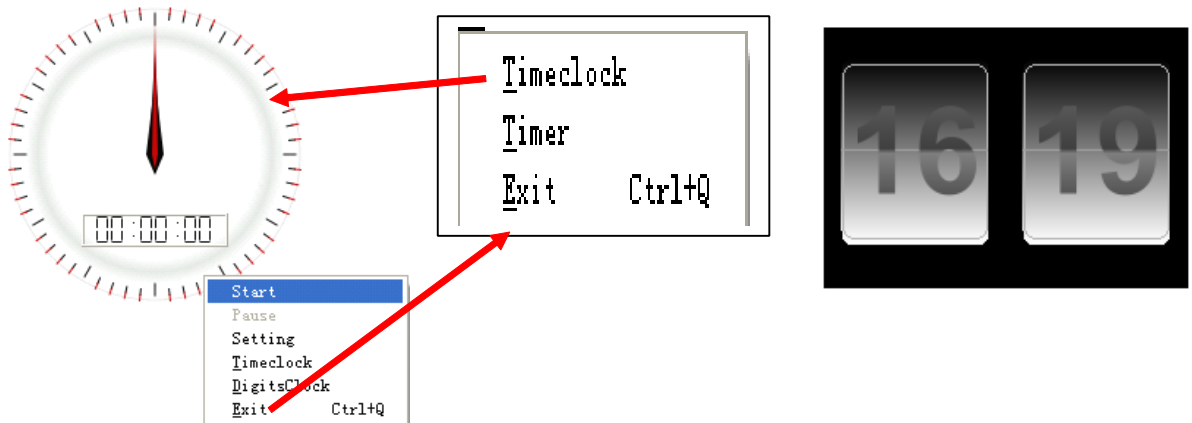
Zoom in/out whole page



3.4.27.4 Clock

In the “Tool” the Clock, with the modes of digital clock and timeclock, shows the time of the system, and can be used to count down or count time.

The Clock window can be moved to any position, and its properties can be adjusted in the Setting.



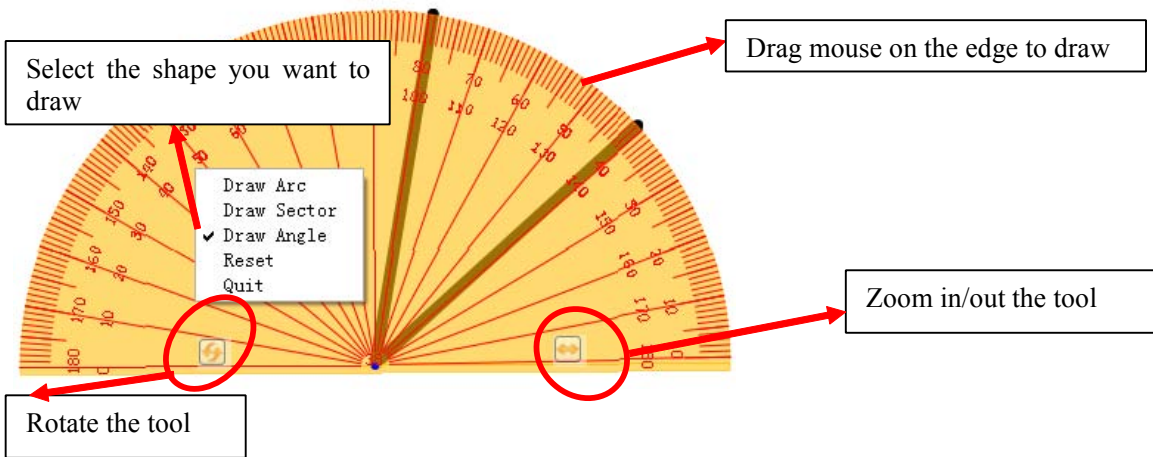
3.4.28 Measure tools

It belongs to the Subject-Math, and pls find them in the bottom side bar of the software:



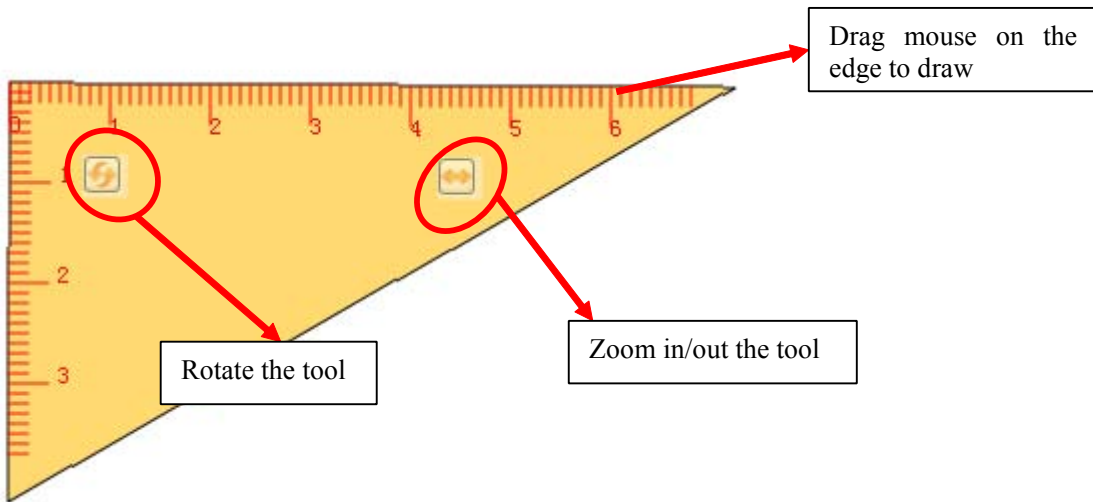
3.4.28.1 Protractor

The protractor can not only measures the angle, but also can be used to draw arc, angle and sector. To use the drawing functions, pls click the icon and select it from the drop-down menu. Then drag the mouse around the EDGE to realize different angle graphic.



3.4.28.2 Triangle

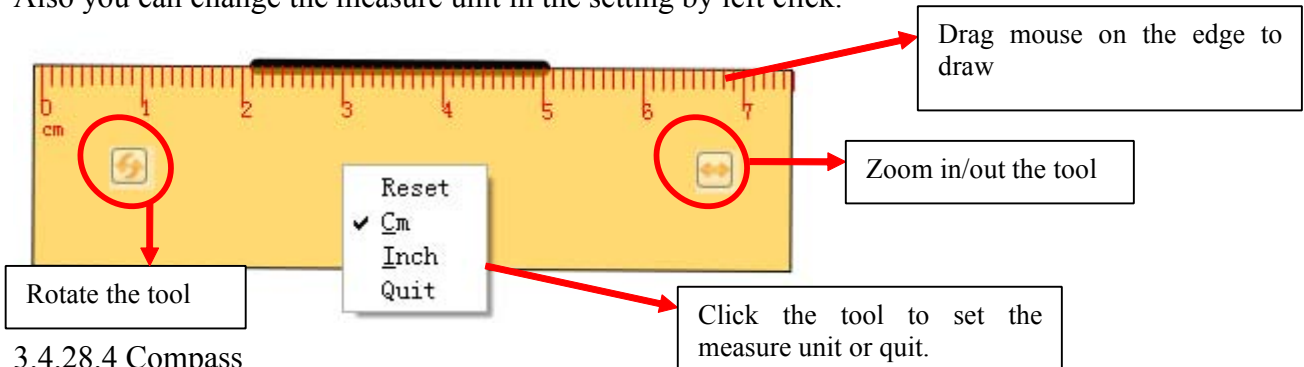
There are isosceles right triangle and 30 degree right triangle functions and can be used to draw line or measure the distance. To drag it, just click any position in the tool. Put the mouse on the edge, you could draw line.



3.4.28.3 Ruler

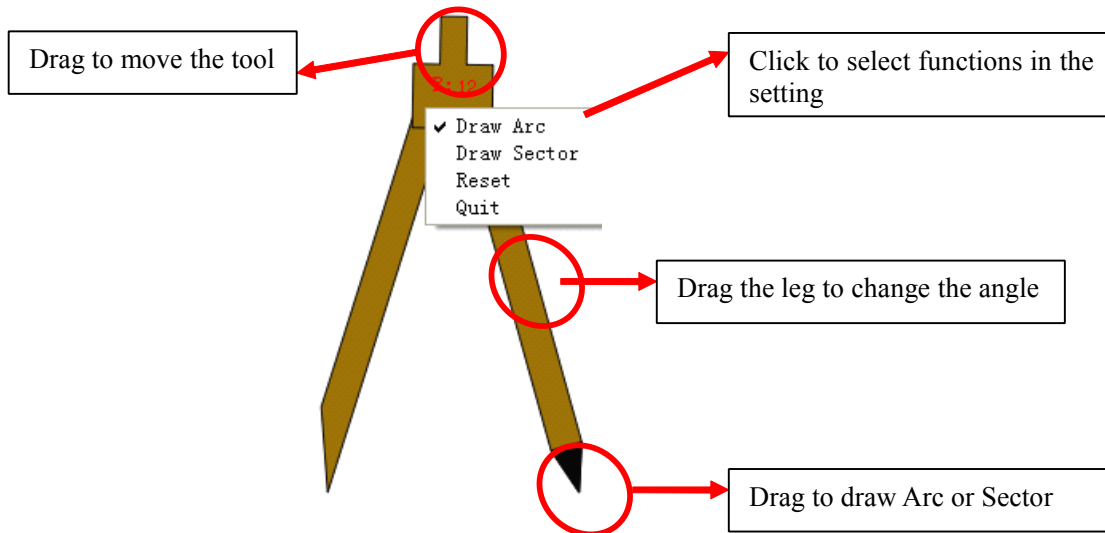
You could draw line or measure distance by ruler. Drag the mouse on the edge to get a line. Click any position to move it.

Also you can change the measure unit in the setting by left click.



3.4.28.4 Compass

The compass could be used to draw arc or sector except circle. Pls click the top position of the compass, then choose the different function in the submenu.



4. FAQ

A. Why my writing is unable to be displayed on the screen?

Please try another color which is different from the background.
 Please remove any other object away from the screen when writing.
 Please make sure that the software of Interactive Board is running.



B. Why the icon display in the task bar at the right bottom of the screen?

The USB cable is in poor connection between the whiteboard and computer. Please make sure the connection is not loose.

The USB cable is not of the original packing. The USB cable adopted is made of superior quality materials for Interactive Whiteboard application, which can not be substituted.

Abnormal situation appears during installing the software. Please uninstall the software and restart the computer, then install the software again.

USB cable connection between the computer and whiteboard is improper. Please refer to the user manual and correct the connection.



If the icon is not displayed in the taskbar at the right bottom of the screen, please re-start the server.exe and InteractiveBoard.exe.

C. Is it necessary to do the position “locate” operation again after reinstalling the software of interactive whiteboard?

No, it’s not necessary. The system has remembered your last parameter of position locating.

D. Is the content which is covered by window of “index page” lost?

No, the content still exists there, it’s just temporarily covered.

E. How to know the working state of Whiteboard?

When there is any touch on the board, if the light at the right bottom of the board will turn blue. It shows the whiteboard is working correctly. If the light keeps still as red, it shows the whiteboard may have problem in hardware.

F. Why sometimes no change happens after changing the background color?

It's probably that the background color is covered by another big size picture. So we can't see the color is changed.

G. What kind of projector is required to equip with the whiteboard?

All the projectors will be ok if only they meet the following 3 points:

- (1) It is front projector.
- (2) It supports the resolution of computer.
- (3) Luminous flux \geq 500 lumens, specific requirement depends on the room size.

H. How to clean the Whiteboard surface?

Gently wipe the whiteboard surface by clean wet cloth.

Note: Do wring the wet cloth, make sure the water won't soak into the frame

XIAMEN INTERACTIVE TECHNOLOGY CO. LTD.,

1F No. 45, Wanghai Rd, Xiamen Software Park Phase II, Xiamen, China - 361008

Tel : 86-592-5902910 Fax : 86-592-5902916