

DR Graphic recorder - Installation Instruction

Door Handle Kit Assembly

DR Graphic Recorder



This Installation Instruction sheet is intended as a guide for replacing or installing hardware and for setting up functionality in the recorder. Refer to the User manual for detailed operational requirements.

The DR Graphic recorders are designed for ease of assembly with minimal disturbance to the rest of the unit. If unsure, please return the unit to your supplier for repair or upgrade.

Opening the recorder and removing the internal chassis of the recorder should only be performed under the following circumstances:

When an item of hardware requires individual replacement.

When an item of hardware is to be retrospectively fitted.

In all other instances it is recommended that the complete unit be returned to an authorized agent or service centre. For Agency Approved recorders the product needs to be upgraded or repaired by an Authorized Repair facility

WARNING

HAZARDOUS VOLTAGES

Disconnect all the power, CJs and IO cabling to the recorder before removing the IO cards chassis or power supply chassis and attempting any maintenance procedures.

SAFETY TESTS

Upon completion of service procedures detailed in this instruction verify the installation per the installation section of the product manual.

Failure to comply with these instructions could result in death or serious injury

CAUTION

OBSERVE ANTI-STATIC PRECAUTIONS

Refer to BS EN61340-5-1: 2001. Basic specification. Protection of electrostatic sensitive devices. Full anti-static precautions MUST be observed when in contact with the electronics of your recorder.

SAVE DATA, SETUPS AND LAYOUTS

Removal of PCBs and battery back-up will result in the loss of all non-volatile data.

Ensure all data and set-ups are saved.

Failure to comply with these instructions may result in product damage.

Before attempting to repair or upgrade a recorder, it is advisable to clear sufficient work space so components such as the front panel can be rested on the work surface without getting scratched or damaged.

Replacing Old Latch Bracket

1. If the latch bracket needs replacement; remove the two screws and washers shown with black arrows. Remove the latch pin from the right side.

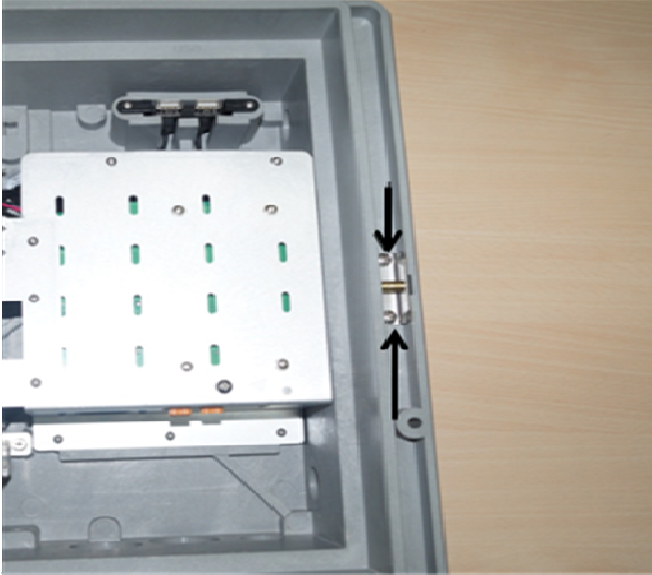


Figure 1
Position of latch bracket

2. Take the new latch bracket and put it in place, reconnect the bracket with the two screws and washers.

Removing Old Door Handle

3. For removing the door handle, remove the two hex screws using an allen wrench as shown in Figure 2.

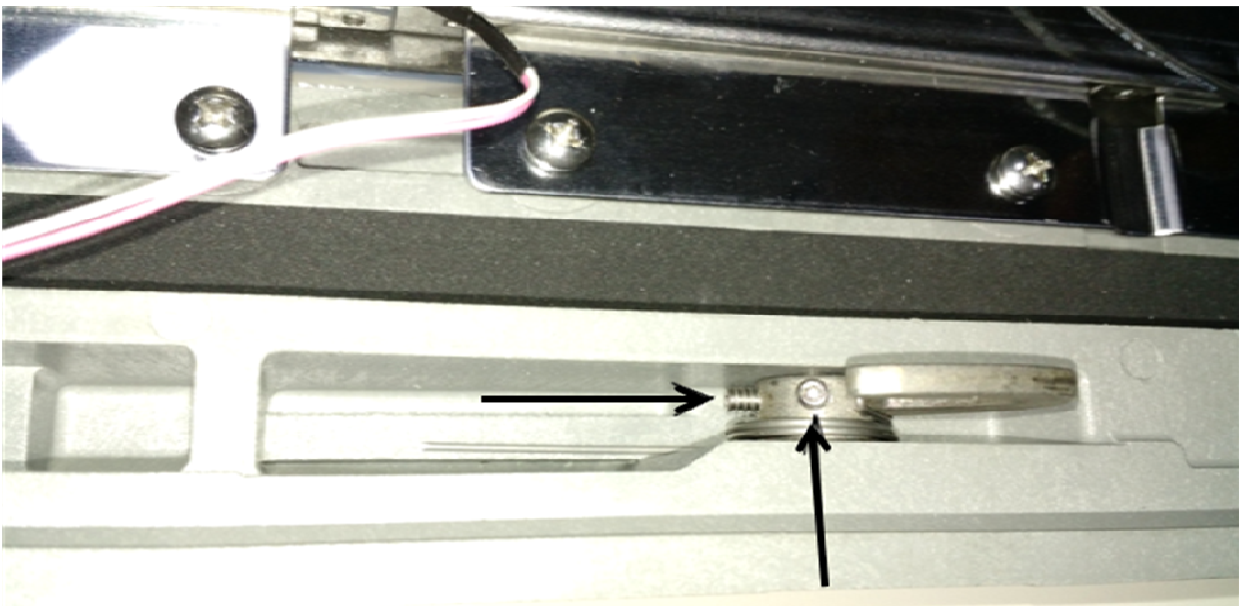


Figure 2 — Removing both the hex nuts to remove the door handle

4. Push the door handle out by using the wrench and pull out the latch door handle by your other hand. Remove the latch CAM and Southco spring assembly.



Figure 3 — Removing both the hex nuts

Fitting New Door Handle

5. Insert C shaped washer on top of the door handle. The flat surface of c shaped washer should be on the bottom



Figure 4
Adding C shaped washer

6. Insert latch spring into the stud. Make sure that the smaller radius end of the spring is facing stud head.



Figure 5
Latch spring and stud

7. Insert stud with latch spring into the door handle. See Figure 6.



Figure 6
Adding stud to handle

8. Insert the washer on the stud from the other side to hold the stud in place and insert the white washer onto the latch handle as shown in Figure 7.



Figure 7
Holding stud in place
with washer

9. Put the Southco spring on to the latch CAM as shown in Figure 8.



Figure 8
Adding Southco spring

10. Insert the Latch CAM and Southco Spring assembly back into the bezel slot. See Figure 9.



Figure 9
Position of Latch CAM and
Southco Spring assembly

11. Hold the latch cam by one hand and insert the door handle back into the door handle hole by other hand.
See Figure 10.

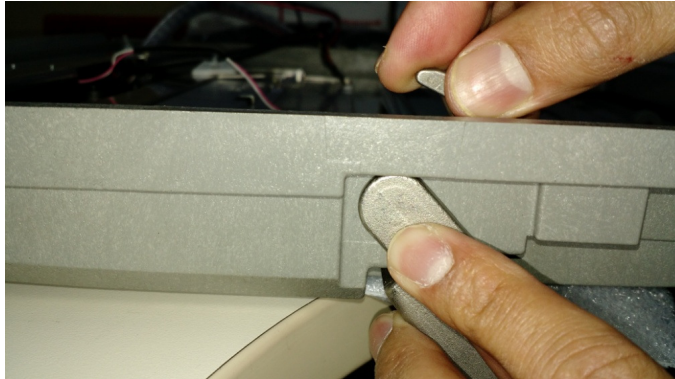


Figure 10
Adding latch handle

12. Reconnect the two hex screws using the allen wrench.



Figure 11
Reconnecting
hex screws

13. Assembly is complete, close the door of the recorder.

Copyrighted Materials. For more information please contact your supplier.